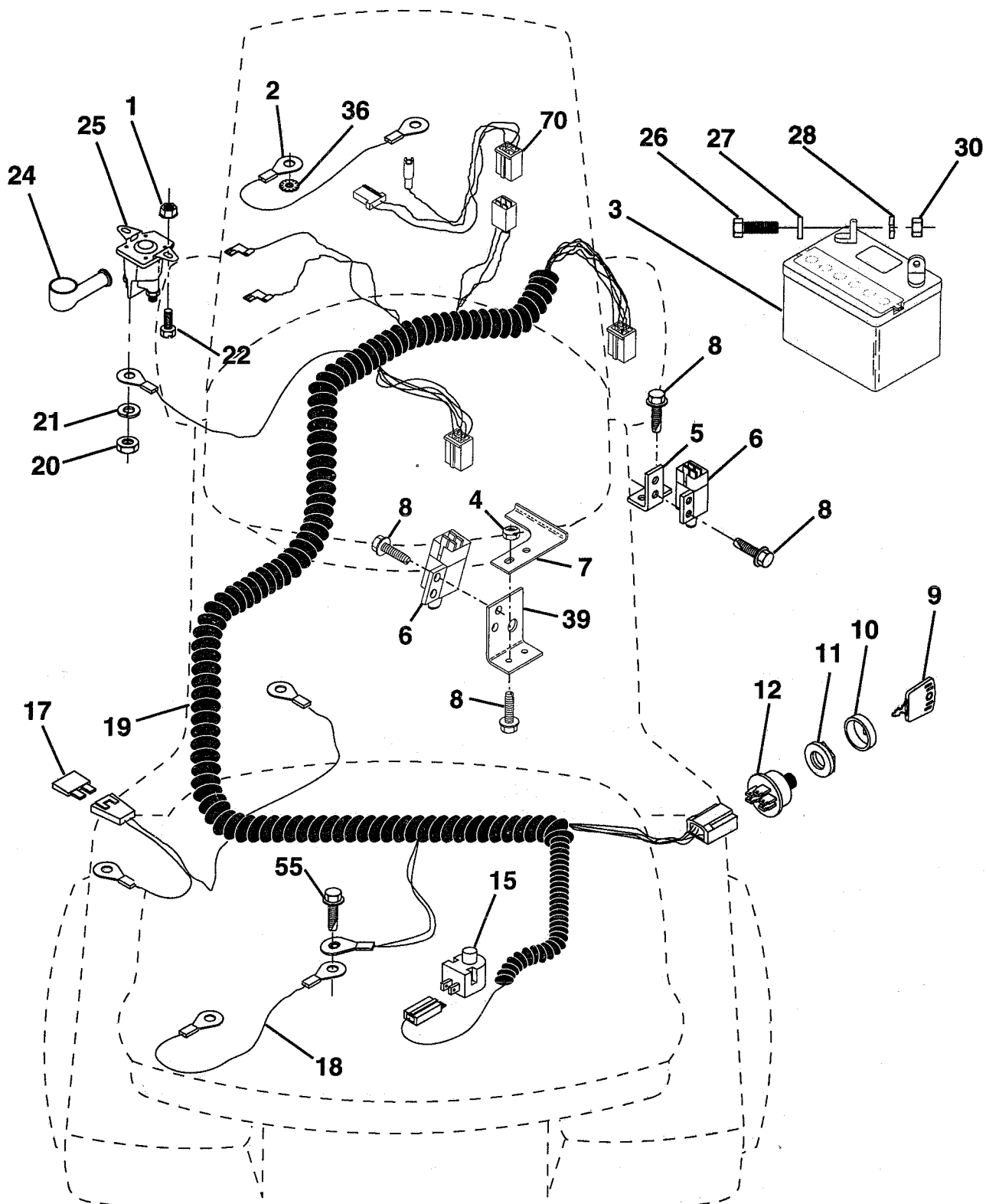


REPAIR PARTS

TRACTOR - - MODEL NUMBER 6A1A1D

ELECTRICAL



REPAIR PARTS

TRACTOR - - MODEL NUMBER 6A1A1D

ELECTRICAL

| KEY NO. | PART NO. | DESCRIPTION |
|---------|----------|---|
| 1 | 73640400 | Nut, Hex, Keps 1/4-20 |
| 2 | 108423X | Assembly, Cable |
| 3 | 146138 | Battery |
| 4 | 69180 | Nut, Lock #10-24 UNC |
| 5 | 108236X | Bracket, Switch |
| 6 | 109553X | Switch, Interlock, 4 Terminal |
| 7 | 146374 | Keeper, Actuator |
| 8 | 17021008 | Screw, Hex Head, Self-Tapping #10-24 x 1/2 |
| 9 | 140402 | Key, Molded |
| 10 | 141226 | Cover, Ignition Key |
| 11 | 140400 | Nut, Ignition |
| 12 | 144921 | Switch, Ignition |
| 15 | 121305X | Switch, Plunger |
| 17 | 108824X | Fuse |
| 18 | 128353 | Assembly, Cable |
| 19 | 146063 | Harness, Ignition |
| 20 | 73350400 | Nut, Hex, Jam 1/4-20 |
| 21 | 10090400 | Washer, Lock 1/4 |
| 22 | 71110408 | Bolt, Hex, Fin. 1/4-20 UNC x 1/2 Grade 5 |
| 24 | 131563 | Cover, Terminal |
| 25 | 145673 | Solenoid |
| 26 | 74760412 | Bolt, Hex Head 1/4-20 UNC x 3/4 |
| 27 | 19091016 | Washer 9/32 x 5/8 x 16 Gauge |
| 28 | 10040400 | Washer, Lock 1/4 |
| 30 | 73220400 | Nut, Hex, Fin. 1/4-20 UNC |
| 36 | 11150400 | Washer, Lock, Internal Tooth 1/4 |
| 39 | 141735 | Bracket Switch Clutch |
| 55 | 17490508 | Screw, Thdrol. 5/16-18 x 1/2 |
| 70 | 140413 | Harness Engine |

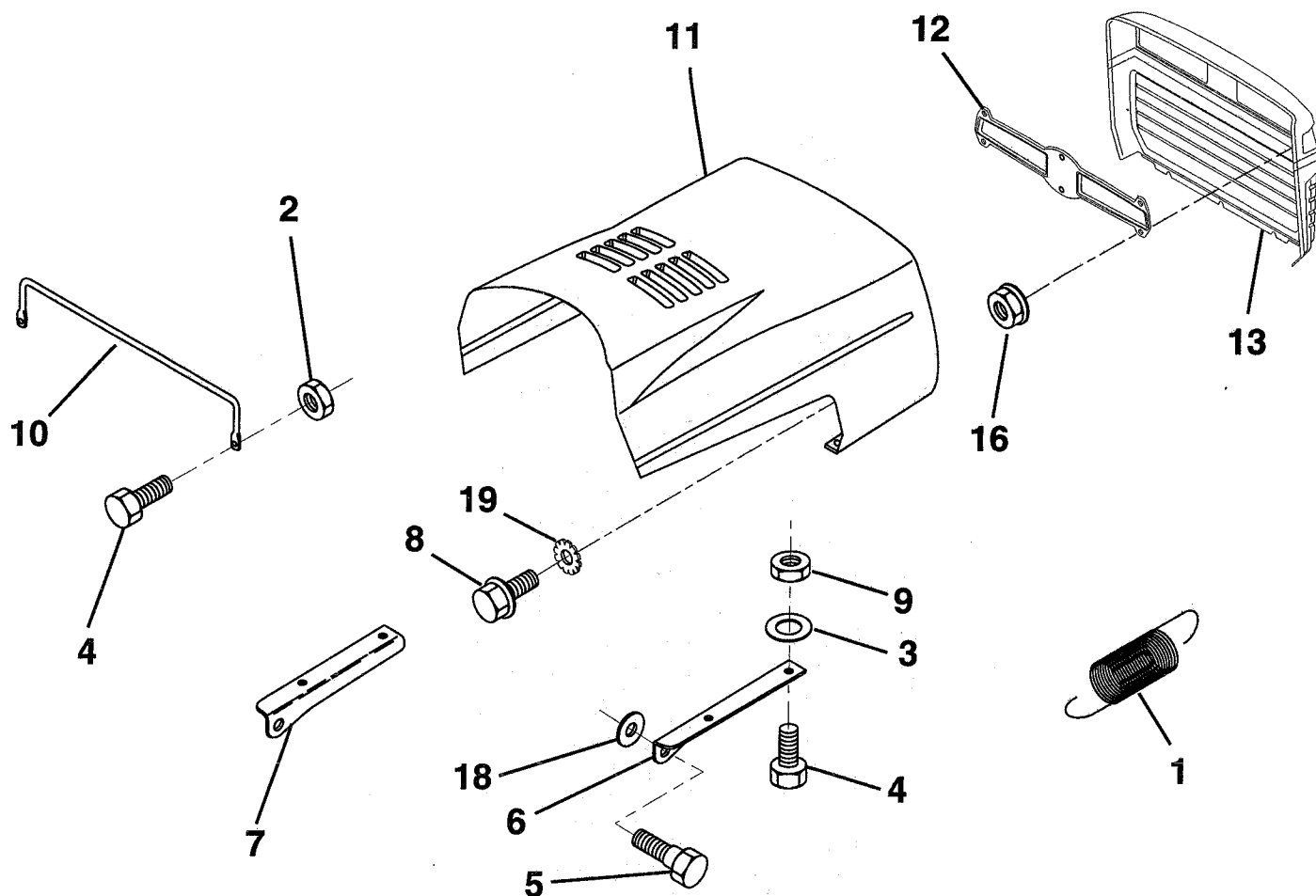
NOTE: All component dimensions given in U.S. inches
1 inch = 25.4 mm

HARDWARE SHOWN LARGER FOR EASIER IDENTIFICATION

REPAIR PARTS

TRACTOR - - MODEL NUMBER 6A1A1D

HOOD



| KEY NO. | PART NO. | DESCRIPTION |
|---------|----------|-------------------------------------|
| 1 | 124657X | Spring, Extension |
| 2 | 73640400 | Nut, Hex, Keps 1/4-20 UNC |
| 3 | 19091416 | Washer 9/32 x 7/8 x 16 Ga. |
| 4 | 74780412 | Bolt, Hex, Fin 1/4-20 x 3/4 Grade 5 |
| 5 | 139888 | Bolt, Shoulder |
| 6 | 122549X | Bracket, Hood, R.H. |
| 7 | 122548X | Bracket, Hood, L.H. |
| 8 | 17521312 | Screw, Sltd. Hex Hd. W/Pl. Washer |
| 9 | 73800400 | Nut, Lock W/Insert 1/4-20 |

| KEY NO. | PART NO. | DESCRIPTION |
|---------|------------|--------------------------------|
| 10 | 123693X | Brace, Hood |
| 11 | 132918X505 | Hood |
| 12 | 127178 | Lens |
| 13 | 134232X428 | Grill |
| 16 | 124346X | Nut, Self-Threading 3/16 |
| 18 | 19111116 | Washer 11/32 x 11/16 x 16 Ga. |
| 19 | 11030400 | Washer, Lock Ext/Int Tooth 1/4 |

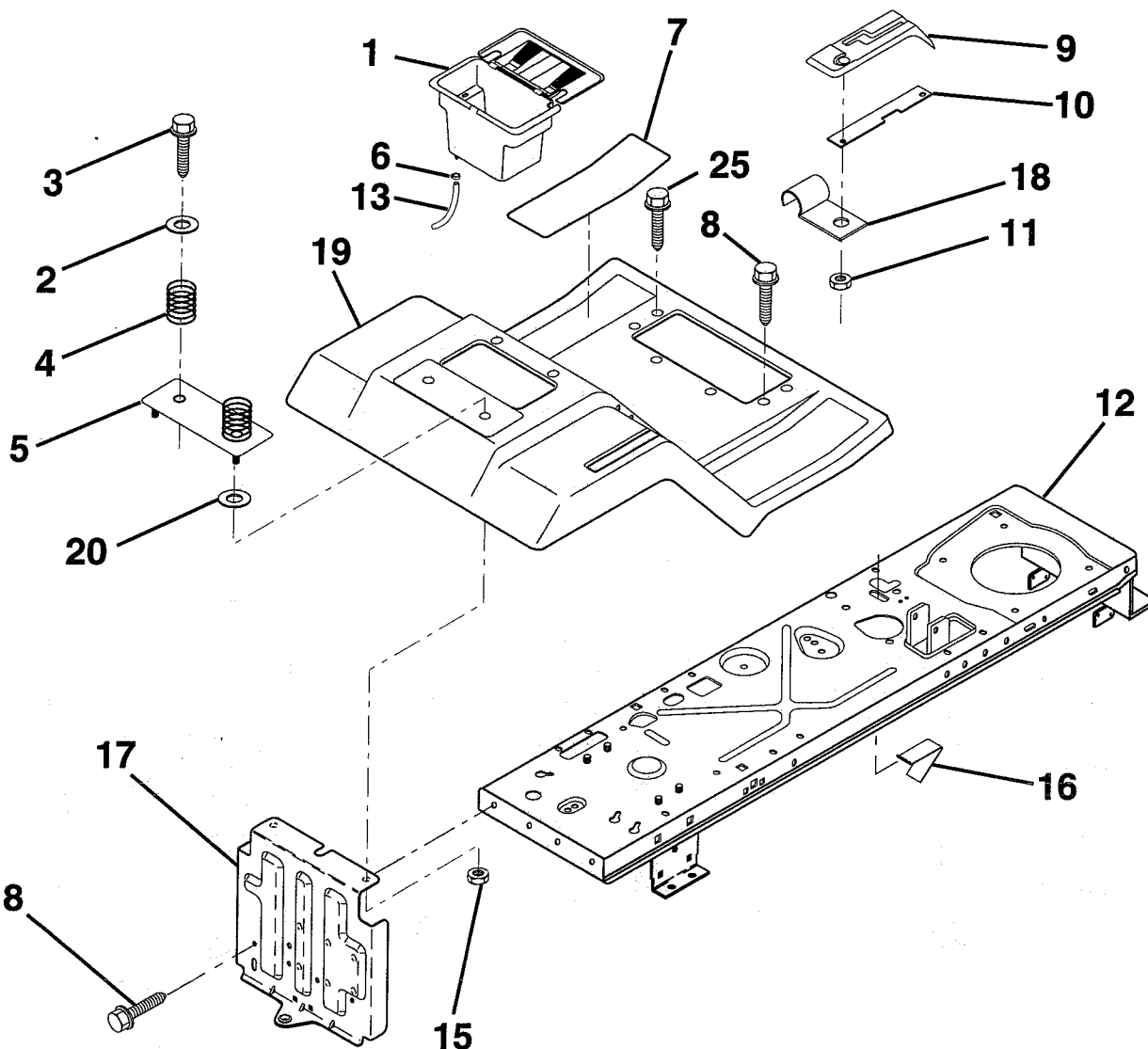
NOTE: All component dimensions given in U.S. inches.
1 inch = 25.4 mm.

HARDWARE SHOWN LARGER FOR EASIER IDENTIFICATION

REPAIR PARTS

TRACTOR -- MODEL NUMBER 6A1A1D

FENDER / CHASSIS



| KEY NO. | PART NO. | DESCRIPTION |
|---------|------------|--|
| 1 | 144940 | Case, Battery |
| 2 | 19132012 | Washer 13/32 x 1-1/4 x 12 Gauge |
| 3 | 17490612 | Screw, Hex Washer Head, Thd. Roll. 3/8-16 x 3/4 |
| 4 | 124181X | Spring, Compression, Seat |
| 5 | 127115X505 | Plate, Battery |
| 6 | 109596X | Clamp, Hose |
| 7 | 124144X | Pad, Footrest |
| 8 | 17490512 | Screw, Hex Washer Head, Thd. Roll. 5/16-18 x 3/4 |
| 9 | 126993X | Console, Shift Control |
| 10 | 139783 | Bar, Shift Lock |

| KEY NO. | PART NO. | DESCRIPTION |
|---------|------------|------------------------------|
| 11 | 124346X | Nut, Self-Threading 3/16 |
| 12 | 145190 | Chassis Assembly, Weldment |
| 13 | 109238X | Tube, Battery Drain |
| 15 | 73640400 | Nut, Hex, Keps 1/4-20 |
| 16 | 141736 | Switch, Actuator |
| 17 | 140782 | Drawbar |
| 18 | 126470X | Clip, Insulated |
| 19 | 140955X505 | Fender/Footrest |
| 20 | 19091413 | Washer 9/32 x 7/8 x 13 Gauge |
| 25 | 17190516 | Scr. Hx S.T. 5/16-18 |

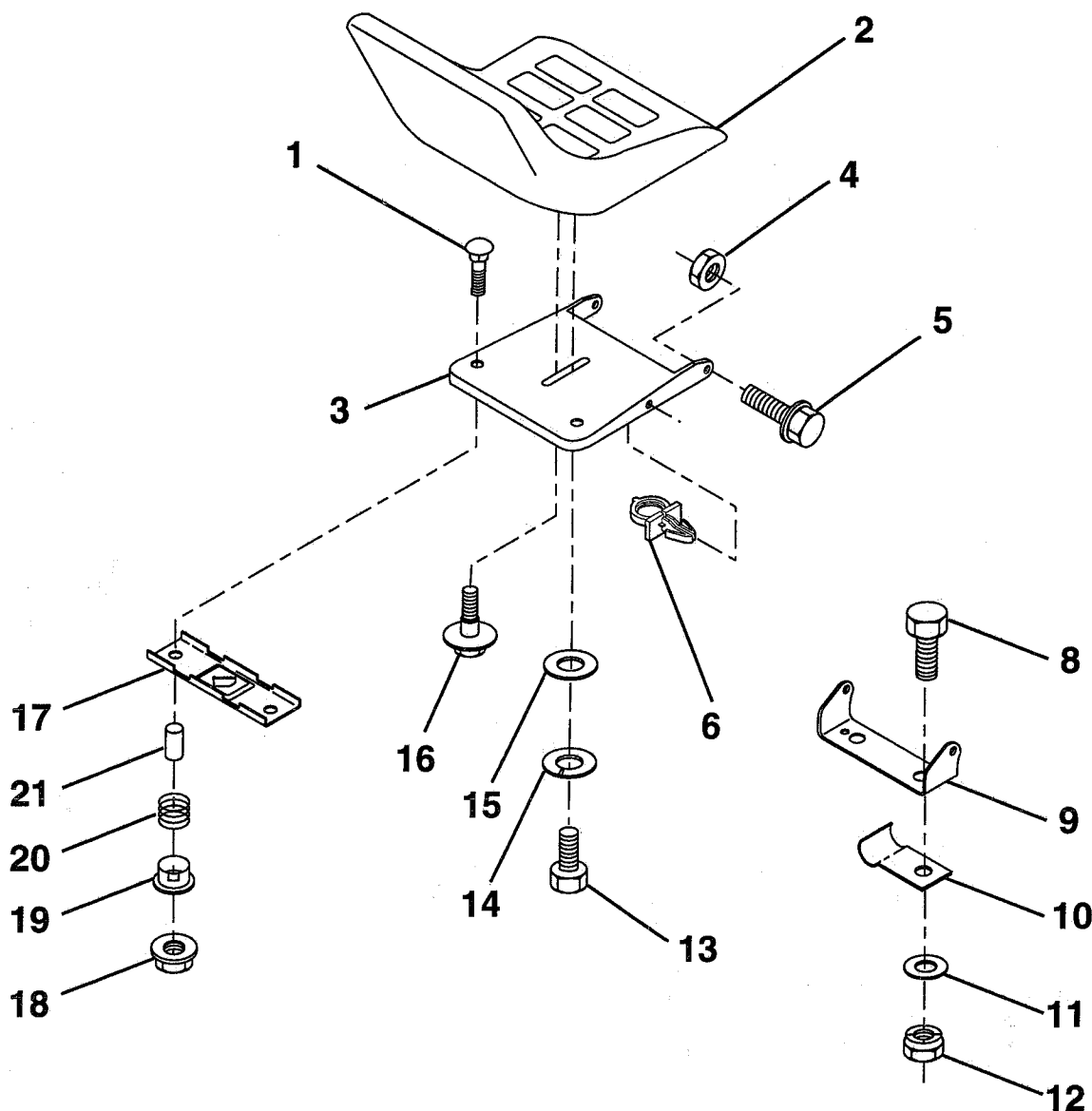
NOTE: All component dimensions given in U.S. inches
1 inch = 25.4 mm.

HARDWARE SHOWN LARGER FOR EASIER IDENTIFICATION

REPAIR PARTS

TRACTOR - - MODEL NUMBER 6A1A1D

SEAT



| KEY NO. | PART NO. | DESCRIPTION |
|---------|----------|-------------------------------|
| 1 | 72050411 | Bolt, Carriage 1/4-20 x 1-3/8 |
| 2 | 134647 | Seat |
| 3 | 140552 | Pan, Seat |
| 4 | 73800500 | Nut, Lock Hex W/Ins. 5/16-18 |
| 5 | 139888 | Bolt, Shld. 5/16-18 |
| 6 | 145006 | Clip, Push-In |
| 8 | 74760616 | Bolt, Hex, Fin 3/8-16 UNC x 1 |
| 9 | 140551 | Bracket, Pivot, Seat |
| 10 | 126471X | Clip, Insulated |
| 11 | 19133210 | Washer 13/32 x 2 x 10 Gauge |
| 12 | 73800600 | Nut, Lock Hex W/Wsh 3/8-16 |

| KEY NO. | PART NO. | DESCRIPTION |
|---------|----------|------------------------------------|
| 13 | 74780814 | Bolt, Fin Hex 1/2 - 13 x 7/8 Gr. 5 |
| 14 | 10040800 | Washer Lock Hvy HLCL Spr. 1/2 |
| 15 | 19171912 | Washer 17/32 x 13/16 x 12 Gauge |
| 16 | 127018X | Bolt, Shoulder |
| 17 | 121246X | Bracket, Switch, Mounting |
| 18 | 123976X | Locknut, Hex, Large, Flange |
| 19 | 121248X | Bushing, Snap |
| 20 | 121250X | Spring, Compression |
| 21 | 134300 | Spacer, Split, Large .28 Id. x .96 |

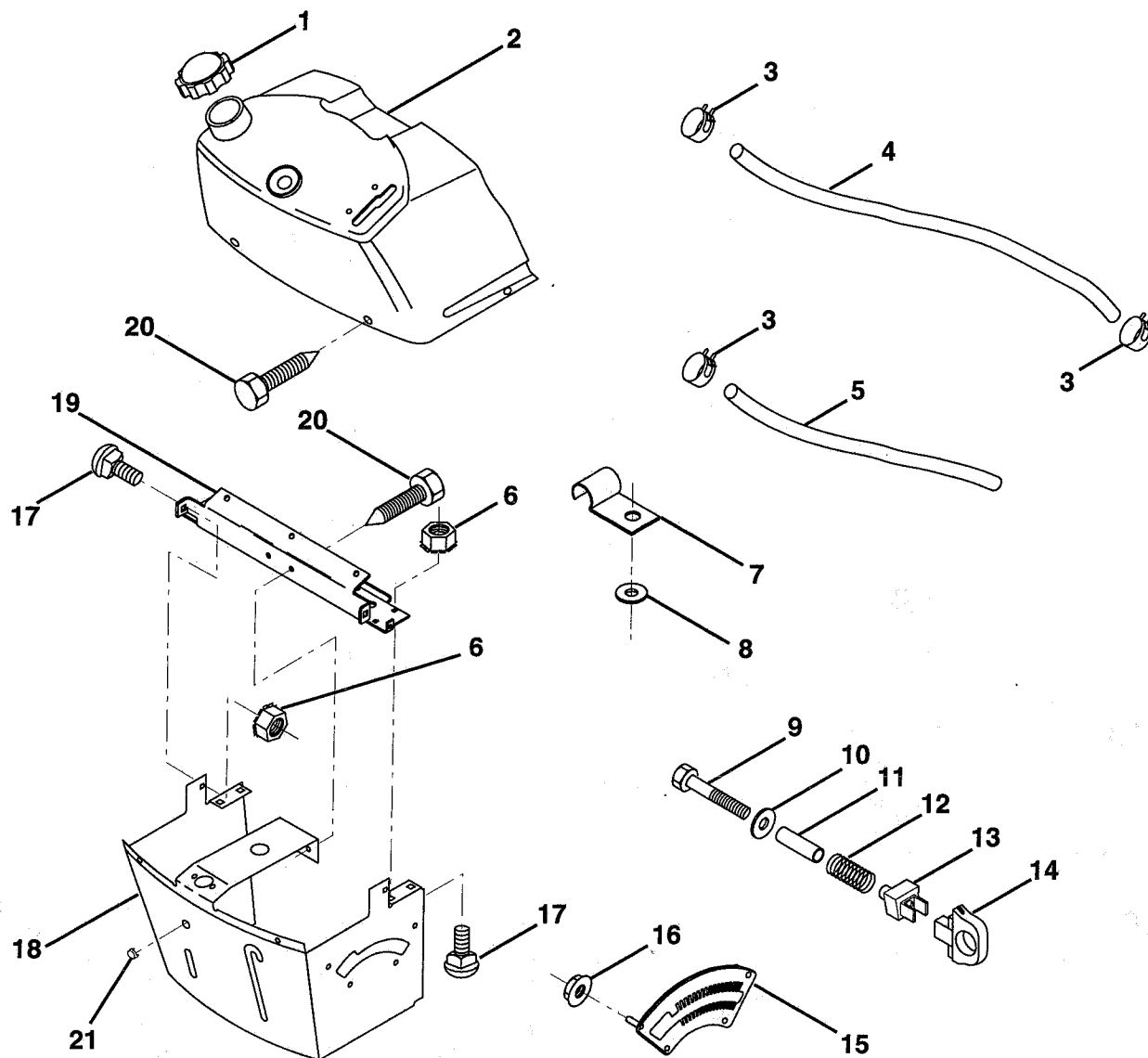
NOTE: All component dimensions given in U.S. inches.
1 inch = 25.4 mm.

HARDWARE SHOWN LARGER FOR EASIER IDENTIFICATION

REPAIR PARTS

TRACTOR - - MODEL NUMBER 6A1A1D

DASH



| KEY NO. | PART NO. | DESCRIPTION |
|---------|----------|---------------------------------|
| 1 | 141523 | Cap, Fuel |
| 2 | 138393 | Assembly, Dash & Fuel Tank |
| 3 | 123487X | Clamp, Hose |
| 4 | 8544R | Line, Fuel |
| 5 | 8548R | Line, Fuel |
| 6 | 73640400 | Nut, Hex, Keps 1/4-20 |
| 7 | 2751R | Clip, Fuel Line |
| 8 | 19091216 | Washer 9/32 x 3/4 x 16 Gauge |
| 9 | 74760428 | Bolt, Hex, Fin. 1/4-20 x 1-3/4 |
| 10 | 19091413 | Washer 11/32 x 11/16 x 16 Gauge |
| 11 | 121249X | Spacer, Split |

| KEY NO. | PART NO. | DESCRIPTION |
|---------|----------|-------------------------------------|
| 12 | 3720R | Spring |
| 13 | 126450X | Clip, Height Adjustment |
| 14 | 126115X | Knob, Height Stop |
| 15 | 122023X | Adjustment, Quadrant Height |
| 16 | 124346X | Nut, Self-Threading 3/16-18 |
| 17 | 72110404 | Bolt, Carriage 1/4-20 x 1/2 Grade 5 |
| 18 | 130745 | Support Assembly, Dash |
| 19 | 134744 | Brace, Cross |
| 20 | 17060408 | Screw, Tap 1/4-20 x 1/2 |
| 21 | 134014 | Plug, Dome |

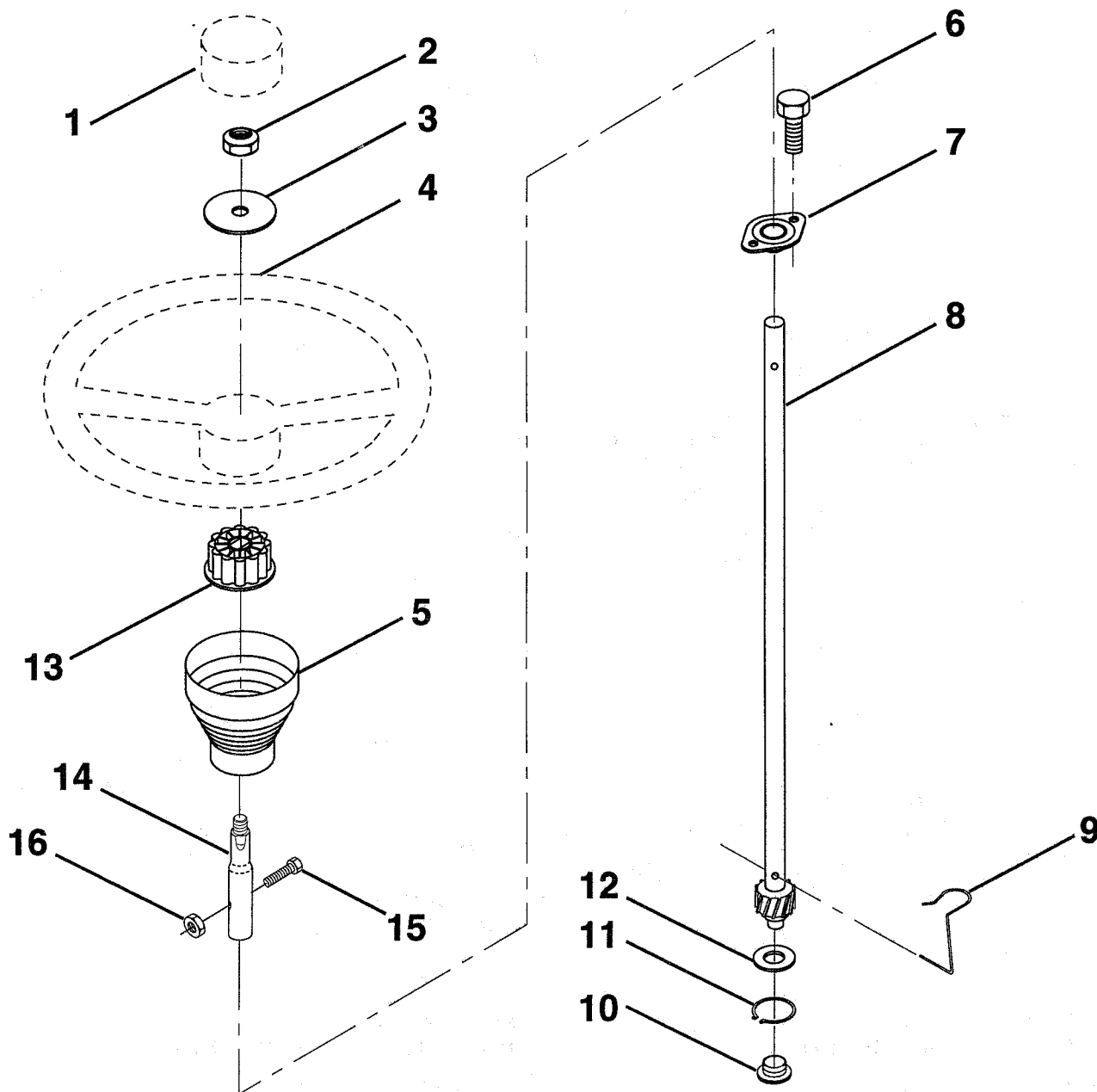
NOTE: All component dimensions given in U.S. inches
1 inch = 25.4 mm.

HARDWARE SHOWN LARGER FOR EASIER IDENTIFICATION

REPAIR PARTS

TRACTOR - - MODEL NUMBER 6A1A1D

STEERING WHEEL



| KEY NO. | PART NO. | DESCRIPTION |
|---------|----------|---|
| 1 | 133742 | Insert, Steering Wheel |
| 2 | 7810H | Locknut 3/8-24 UNF |
| 3 | 19133808 | Washer 13/32 x 2-3/8 x 8 Ga. |
| 4 | 133741 | Wheel, Steering |
| 5 | 121897X | Sleeve, Steering |
| 6 | 17431008 | Screw, Hex Self-Tapping #10-16 x 1/2 |
| 7 | 102803X | Bushing, Steering |
| 8 | 147391 | Shaft, Steering |
| 9 | 124210X | Clip, Steering |

| KEY NO. | PART NO. | DESCRIPTION |
|---------|----------|-----------------------------------|
| 10 | 123438X | Bushing, Lower, Steering |
| 11 | 12000045 | Ring, Retaining |
| 12 | 19211616 | Washer 21/32 x 1 x 16 Ga. |
| 13 | 104820X | Adaptor, Steering Wheel |
| 14 | 147392 | Extension Shaft Steering |
| 15 | 74780520 | Bolt, Fin Hex 5/16-18 UNC x 1-1/4 |
| 16 | 73800500 | Nut, Lock Hex w/Ins 5/16-18 UNC |

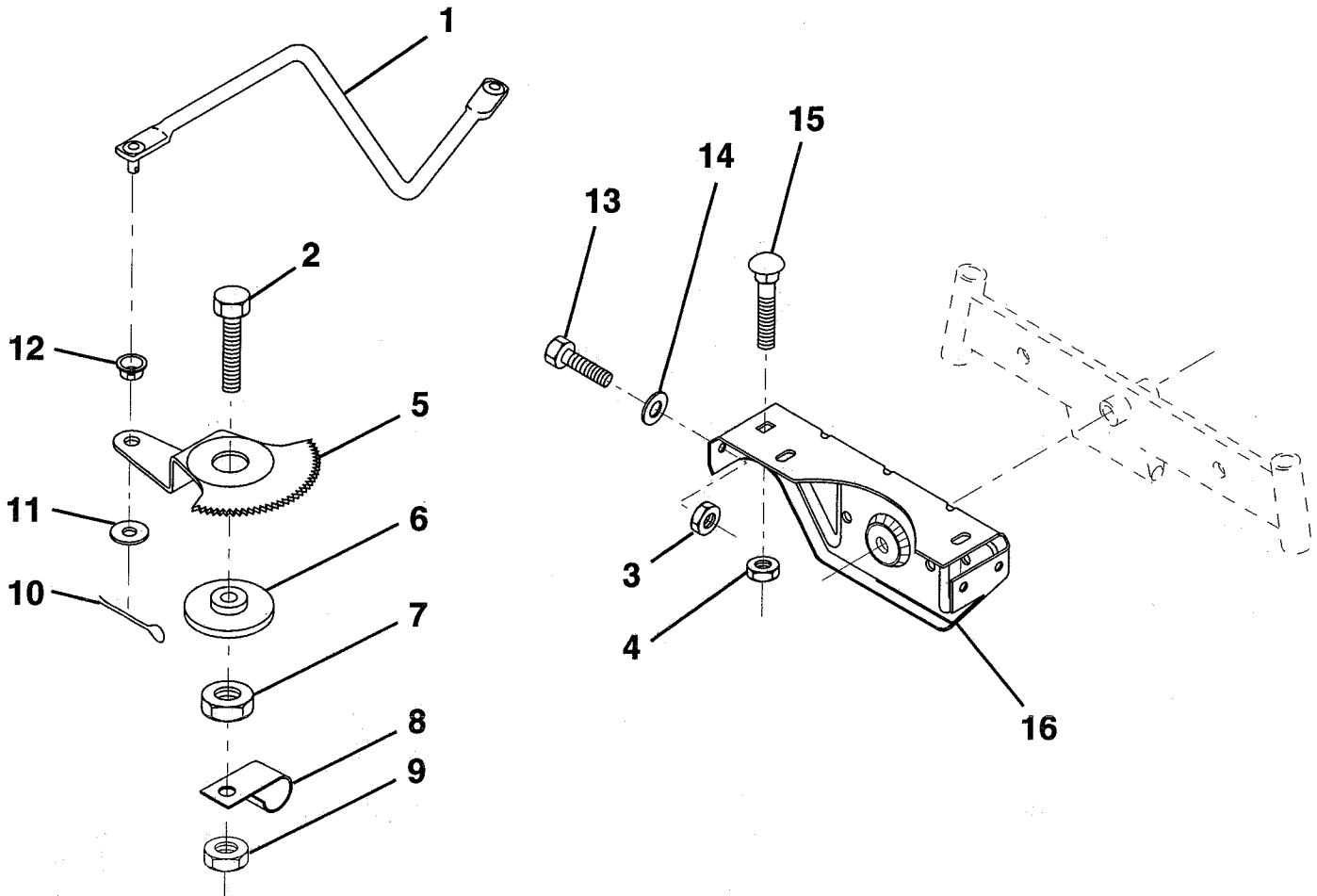
NOTE: All component dimensions given in U.S. inches
1 inch = 25.4 mm.

HARDWARE SHOWN LARGER FOR EASIER IDENTIFICATION

REPAIR PARTS

TRACTOR - - MODEL NUMBER 6A1A1D

SECTOR GEAR / AXLE SUPPORT



| KEY NO. | PART NO. | DESCRIPTION |
|---------|----------|--------------------------------------|
| 1 | 132566 | Link, Drag |
| 2 | 74780828 | Bolt, Hex, Fin 1/2-13 x 1-3/4 |
| 3 | 73680500 | Nut, Crownlock 5/16-18 |
| 4 | 73680600 | Nut, Crownlock 3/8-16 UNC |
| 5 | 121926X | Gear, Sector |
| 6 | 121927X | Bushing |
| 7 | 73030800 | Nut, Heavy, Hex, Top Lock 1/2-13 UNC |
| 8 | 126472X | Clip, Wire |
| 9 | 73680800 | Nut, Crownlock 1/2-13 |

| KEY NO. | PART NO. | DESCRIPTION |
|---------|----------|---------------------------------|
| 10 | 76020412 | Pin, Cotter 1/8 x 3/4 |
| 11 | 19131316 | Washer 13/32 x 13/16 x 16 Ga. |
| 12 | 126847X | Bushing |
| 13 | 74760512 | Bolt, Hex 5/16-18 x 3/4 |
| 14 | 19111416 | Washer 11/32 x 7/8 x 16 Ga. |
| 15 | 72110606 | Bolt, Carriage 3/8-16 UNC x 3/4 |
| 16 | 137096 | Support, Front Axle |

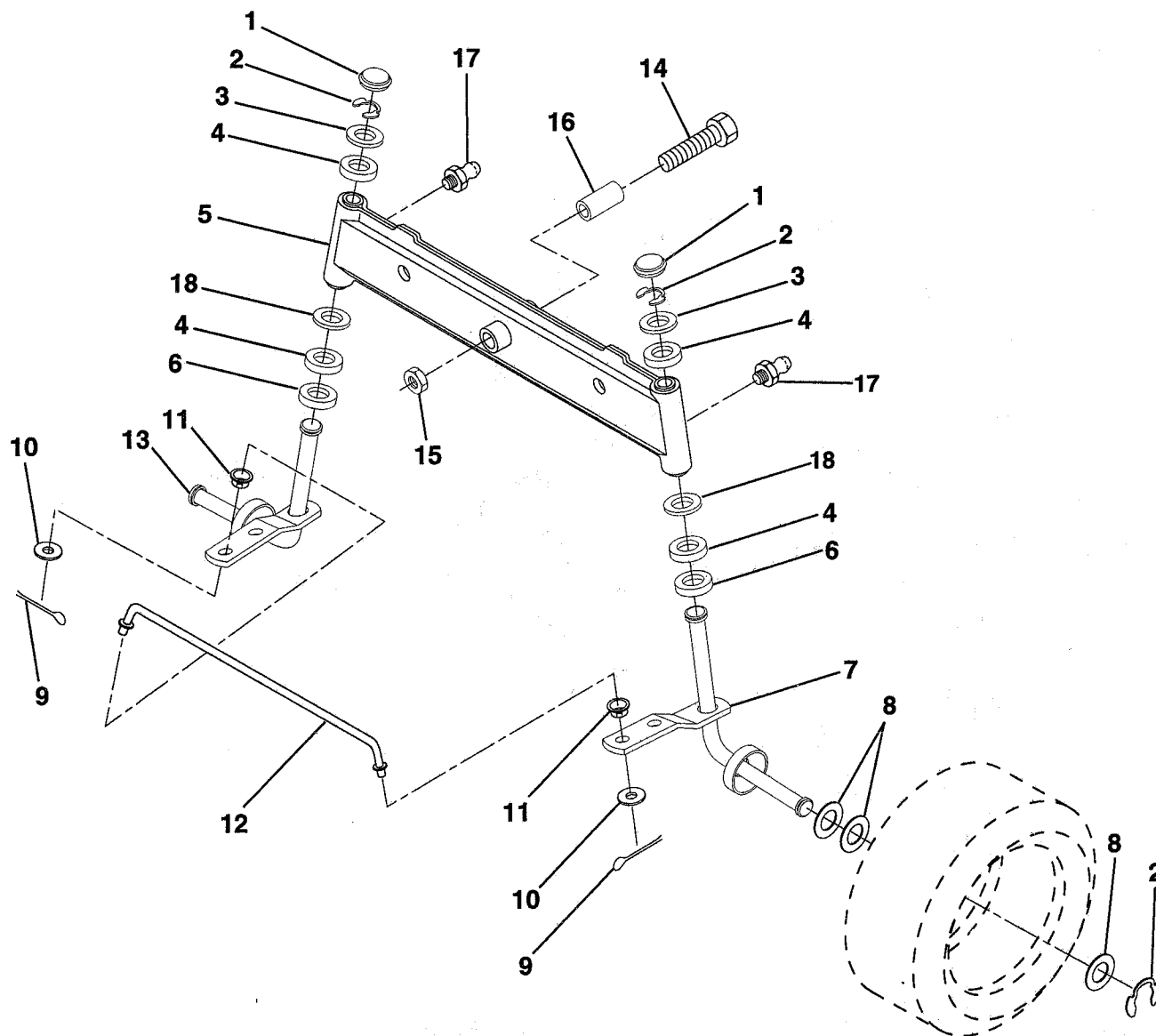
NOTE: All component dimensions given in U.S. inches
1 inch = 25.4 mm.

HARDWARE SHOWN LARGER FOR EASIER IDENTIFICATION

REPAIR PARTS

TRACTOR -- MODEL NUMBER 6A1A1D

FRONT AXLE



| KEY NO. | PART NO. | DESCRIPTION |
|---------|----------|---------------------------------|
| 1 | 121232X | Cap, Spindle |
| 2 | 12000029 | Ring, Klip |
| 3 | 121748X | Washer 25/32 x 1-5/8 x 16 Gauge |
| 4 | 3366R | Bearing |
| 5 | 142033 | Axle, Front |
| 6 | 6266H | Bearing, Thrust |
| 7 | 137062 | Spindle Assembly, R.H. |
| 8 | 121749X | Washer 25/32 x 1-1/4 x 16 Gauge |
| 9 | 76020412 | Pin, Cotter 1/8 x 3/4 |
| 10 | 19131316 | Washer 13/32 x 13/16 x 16 Gauge |

| KEY NO. | PART NO. | DESCRIPTION |
|---------|----------|-------------------------------|
| 11 | 126847X | Bushing |
| 12 | 130465 | Rod, Tie |
| 13 | 137061 | Spindle Assembly, L.H. |
| 14 | 74011056 | Bolt, Hex 5/8-11 x 3-1/2 |
| 15 | 73901000 | Nut, Lock Flange 5/8-11 |
| 16 | 110438X | Spacer |
| 17 | 6855M | Fitting, Grease |
| 18 | 19272016 | Washer 27/32 x 1-1/4 x 16 Ga. |

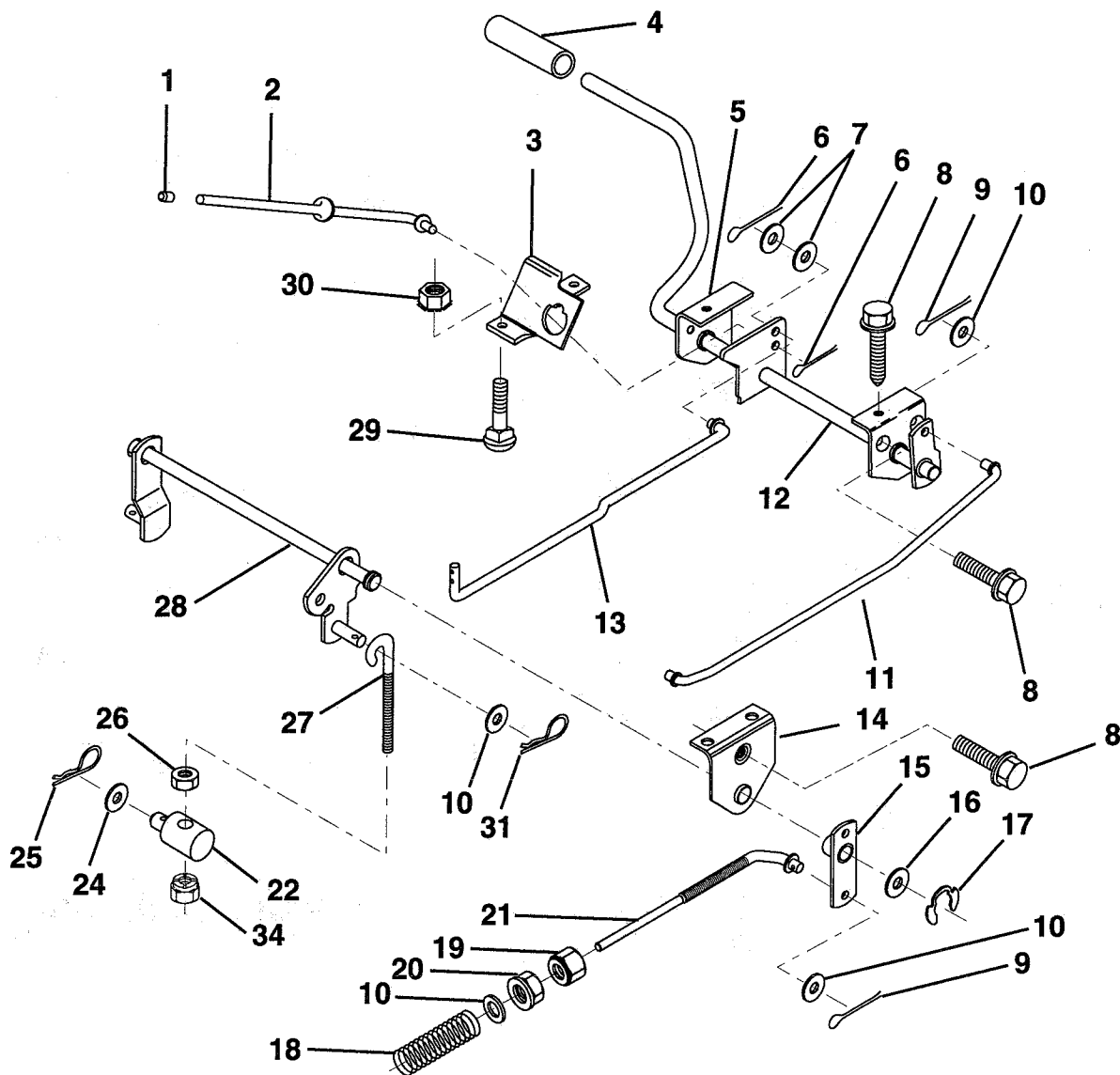
NOTE: All component dimensions given in U.S. inches
1 inch = 25.4 mm.

HARDWARE SHOWN LARGER FOR EASIER IDENTIFICATION

REPAIR PARTS

TRACTOR -- MODEL NUMBER 6A1A1D

BRAKE / REAR MOWER LIFT ASSEMBLY



| KEY NO. | PART NO. |
|---------|----------|
| 1 | 71673 |
| 2 | 123436X |
| 3 | 123437X |
| 4 | 8156H |
| 5 | 122504X |
| 6 | 76020312 |
| 7 | 19131016 |
| 8 | 17490508 |
| 9 | 76020412 |
| 10 | 19131316 |
| 11 | 123543X |
| 12 | 139933 |
| 13 | 123394X |
| 14 | 121978X |
| 15 | 133332 |
| 16 | 19251816 |

DESCRIPTION

| |
|--------------------------------------|
| Cap, Parking Brake |
| Rod, Parking Brake |
| Bracket, Parking Brake |
| Cover, Pedal |
| Bracket, Pedal, Clutch LH |
| Pin, Cotter 3/32 x 3/4 |
| Washer 13/32 x 5/8 x 16 Gauge |
| Screw, Hex, Thd. Roll. 5/16-18 x 1/2 |
| Pin, Cotter 1/8 x 3/4 |
| Washer 13/32 x 13/16 x 16 Gauge |
| Rod, Front Brake |
| Assembly, Clutch/Brake Pedal |
| Rod, Clutch |
| Bracket, Lift, Shaft |
| Assembly, Brake, Pivot, Arm |
| Washer 25/32 x 1-1/8 x 16 Gauge |

| KEY NO. | PART NO. |
|---------|----------|
| 17 | 12000034 |
| 18 | 151332 |
| 19 | 73350600 |
| 20 | 73800600 |
| 21 | 131460 |
| 22 | 144585 |
| 24 | 19132012 |
| 25 | 4921H |
| 26 | 73930600 |
| 27 | 127369 |
| 28 | 140776 |
| 29 | 72110506 |
| 30 | 73510500 |
| 31 | 3146R |
| 34 | 73680600 |

DESCRIPTION

| |
|----------------------------------|
| Ring, Klip |
| Spring, Brake Rod |
| Nut, Hex, Jam 3/8-16 UNC |
| Nut, Lock Hex w/Ins 3/8-16 |
| Rod, Rear Brake |
| Trunnion, Lift |
| Washer 13/32 x 1-1/4 x 12 Gauge |
| Spring, Retainer |
| Nut, Centerlock 3/8-16 UNC |
| Link, Threaded |
| Assembly, Rear Mower Lift |
| Bolt, Carriage 5/16-18 UNC x 3/4 |
| Nut, Keps 5/16-18 UNC |
| Retainer Spring |
| Nut, Crownlock 3/8-16 |

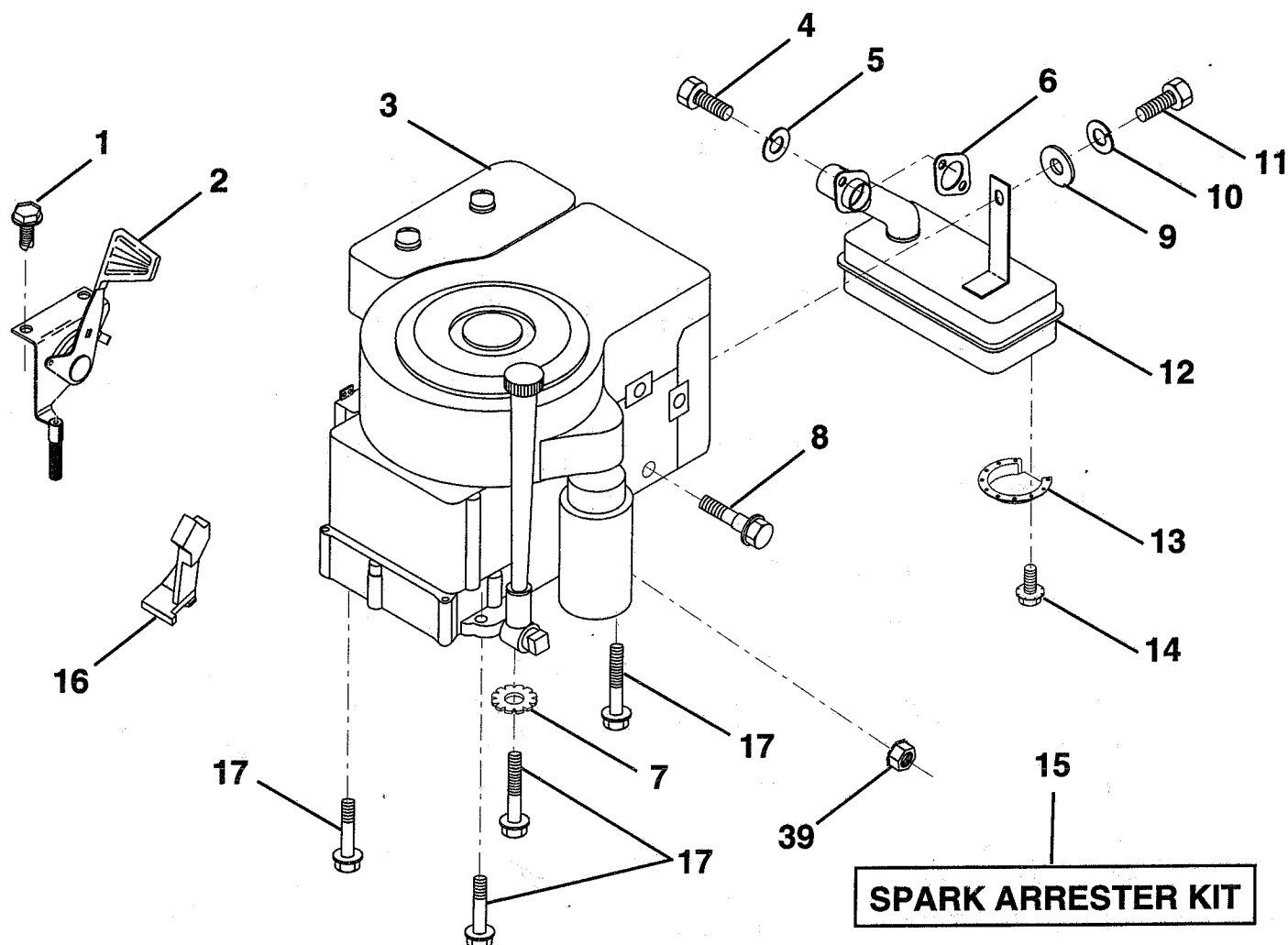
NOTE: All component dimensions given in U.S. inches
1 inch = 25.4 mm.

HARDWARE SHOWN LARGER FOR EASIER IDENTIFICATION

REPAIR PARTS

TRACTOR -- MODEL NUMBER 6A1A1D

ENGINE / THROTTLE



| KEY NO. | PART NO. | DESCRIPTION |
|---------|----------|---|
| 1 | 17060408 | Screw, Hex, Thread Cutting 1/4-20 x 1/2 |
| 2 | 133025 | Control, Throttle |
| 3 | ----- | Engine, B&S, 10 HP, model #282707 |
| 4 | 71070512 | Screw, Hex Hd |
| 5 | 10040500 | Washer, Lock, Hvy Hlcl Spring 5/16 |
| 6 | 272293 | Gasket, Exhaust |
| 7 | 11050600 | Washer Lock Ext. Tooth 3/8 |
| 8 | 121094X | Bolt, Shoulder 5/16 UNC |
| 9 | 19101216 | Washer 5/16 x 3/4 x 16 Gauge |
| 10 | 10040400 | Washer, Lock, Hvy Helical Spr. 1/4 |

| KEY NO. | PART NO. | DESCRIPTION |
|---------|----------|---|
| 11 | ----- | Bolt, Hex, Fin (Order from the Engine Manufacturer) |
| 12 | 137437 | Muffler |
| 13 | 101326L | Deflector, Muffler |
| 14 | 17030808 | Screw, Spiderloc Hex Hd. 8 x 1/2 |
| 15 | 137180 | Kit, Spark Arrester (Optional) |
| 16 | 127951 | Stop, Choke |
| 17 | 17490624 | Screw, Hex Washer Head, Thd. Roll. 3/8-16 x 1-1/2 |
| 39 | 128861 | Nut, Flange 1/4-20 |

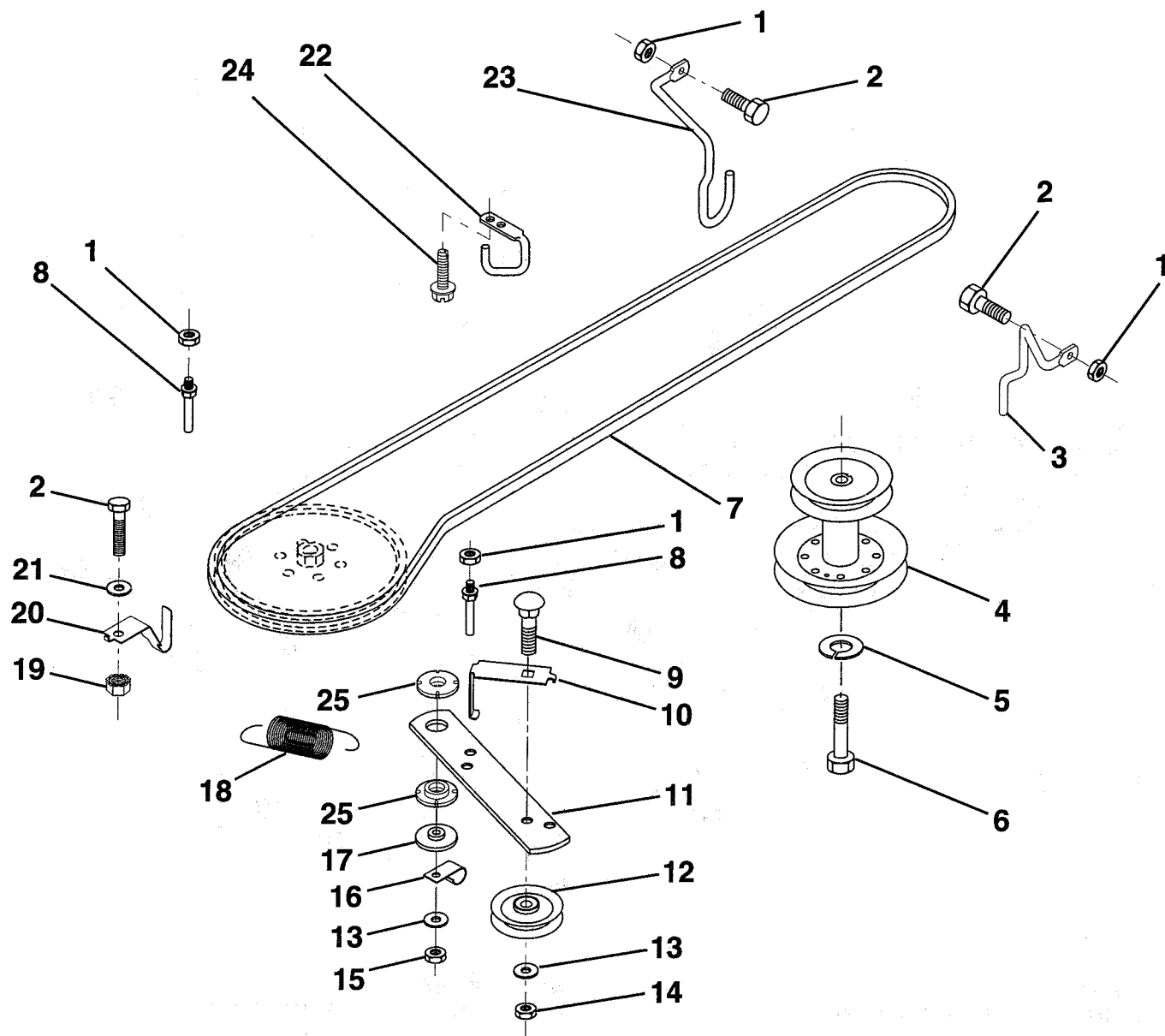
NOTE: All component dimensions given in U.S. inches
1 inch = 25.4 mm.

HARDWARE SHOWN LARGER FOR EASIER IDENTIFICATION

REPAIR PARTS

TRACTOR - - MODEL NUMBER 6A1A1D

GROUND DRIVE



| KEY NO. | PART NO. | DESCRIPTION |
|---------|----------|---|
| 1 | 73680500 | Nut, Crownlock 5/16-18 |
| 2 | 74760512 | Bolt, Hex 5/16-18 UNC x 3/4 |
| 3 | 141342 | Keeper, Mower Drive Belt, Engine, R.H. |
| 4 | 138029 | Pulley, Engine |
| 5 | 10040700 | Washer, Lock, Heavy Helical Spring 7/16 |
| 6 | 71170744 | Bolt, Hex, 7/16-20 x 2-3/4 Grade 5 |
| 7 | 124525X | Traction, V-Belt Drive |
| 8 | 123405X | Keeper, T/A Ground Drive Belt |
| 9 | 72140612 | Bolt, Carriage 3/8-16 UNC x 1-1/2 |
| 10 | 123396X | Keeper, Ground Drive Belt, Idler |
| 11 | 150926 | Arm, Ground Drive Clutch |
| 12 | 123674X | Idler, Flat |
| 13 | 19131316 | Washer 13/32 x 13/16 x 16 Gauge |

| KEY NO. | PART NO. | DESCRIPTION |
|---------|----------|----------------------------------|
| 14 | 73930600 | Nut, Centerlock 3/8-16 UNC |
| 15 | 73680600 | Nut, Crownlock 3/8-16 |
| 16 | 126471X | Clip, Insulated |
| 17 | 150932 | Spacer, Retainer |
| 18 | 131459 | Spring, Extension |
| 19 | 73510500 | Nut, Keps 5/16-18 UNC |
| 20 | 139919 | Keeper, T/A Ground Drive Belt |
| 21 | 19111016 | Washer 11/32 x 5/8 x 16 Gauge |
| 22 | 123404X | Keeper, Ground Drive Belt, Frame |
| 23 | 140916 | Keeper, Mower Drive Belt, L.H. |
| 24 | 17720408 | Screw Thdcut 1/4-20 x 1/2 |
| 25 | 150935 | Bushing, Nylon |

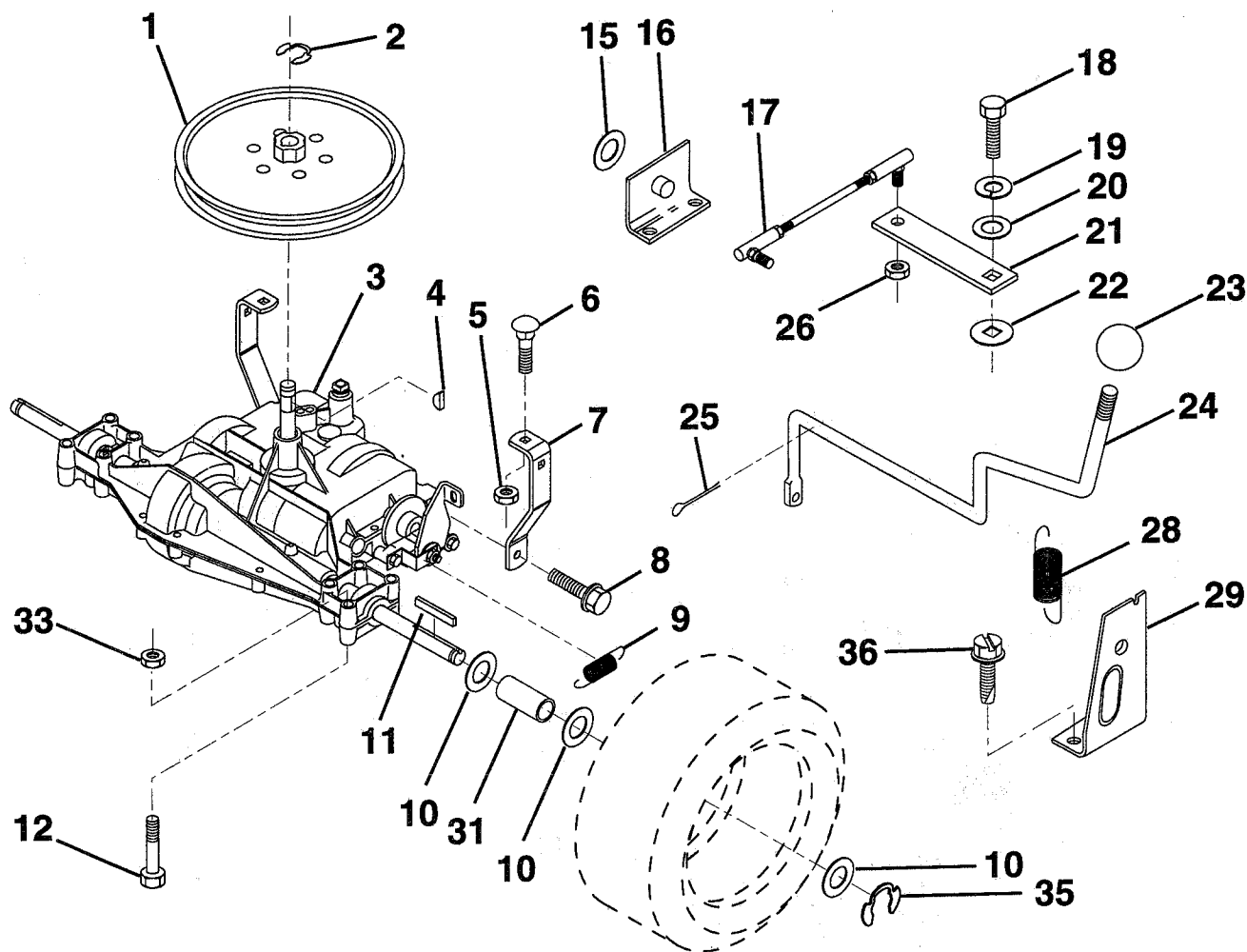
NOTE: All component dimensions given in U.S. inches
1 inch = 25.4 mm.

HARDWARE SHOWN LARGER FOR EASIER IDENTIFICATION

REPAIR PARTS

TRACTOR - - MODEL NUMBER 6A1A1D

TRANSAXLE



| KEY NO. | PART NO. | DESCRIPTION |
|---------|----------|-------------------------------------|
| 1 | 123385X | Pulley |
| 2 | 12000028 | Ring, Retainer |
| 3 | 142594 | Transaxle Model Number 4360-77 |
| 4 | 2228M | Key, Woodruff #9 |
| 5 | 73680500 | Nut, Crownlock 5/16-18 |
| 6 | 72140506 | Bolt, Carriage 5/16-18 UNC x 3/4 |
| 7 | 123378X | Strap, Torque |
| 8 | 17490512 | Screw 5/16-18 x 3/4 |
| 9 | 146682 | Spring, Brake |
| 10 | 121749X | Washer 25/32 x 1-1/4 x 16 Gauge |
| 11 | 123583X | Key, Square |
| 12 | 74760644 | Bolt Fin Hex 5/16-18 x 2-1/2 |
| 15 | 19171616 | Washer 17/32 x 16 Ga. |
| 16 | 124600X | Support, Handle Shift |
| 17 | 123632X | Link, Shift |
| 18 | 74550412 | Bolt, Hex, Fin. 1/4-28UNFx3/4 Gr. 8 |

| KEY NO. | PART NO. | DESCRIPTION |
|---------|----------|------------------------------|
| 19 | 10040400 | Washer, Lock 1/4 |
| 20 | 19091210 | Washer 9/32 x 3/4 x 10 Gauge |
| 21 | 123484X | Arm, Shift |
| 22 | 105701X | Washer, Shift Plate |
| 23 | 106933X | Knob |
| 24 | 128215 | Rod, Shift |
| 25 | 76020416 | Pin, Cotter 1/8 x 1 |
| 26 | 73810500 | Nut, Hex, Nylon 5/16-24 UNF |
| 28 | 128085 | Spring, Extension |
| 29 | 128084 | Support, Handle, Shift, R.H. |
| 31 | 109502X | Spacer, Split |
| 33 | 73680600 | Nut, Crownlock 3/8-16 |
| 35 | 12000001 | E-Ring |
| 36 | 17720408 | Screw, Thdcut. 1/4-20 x 1/2 |

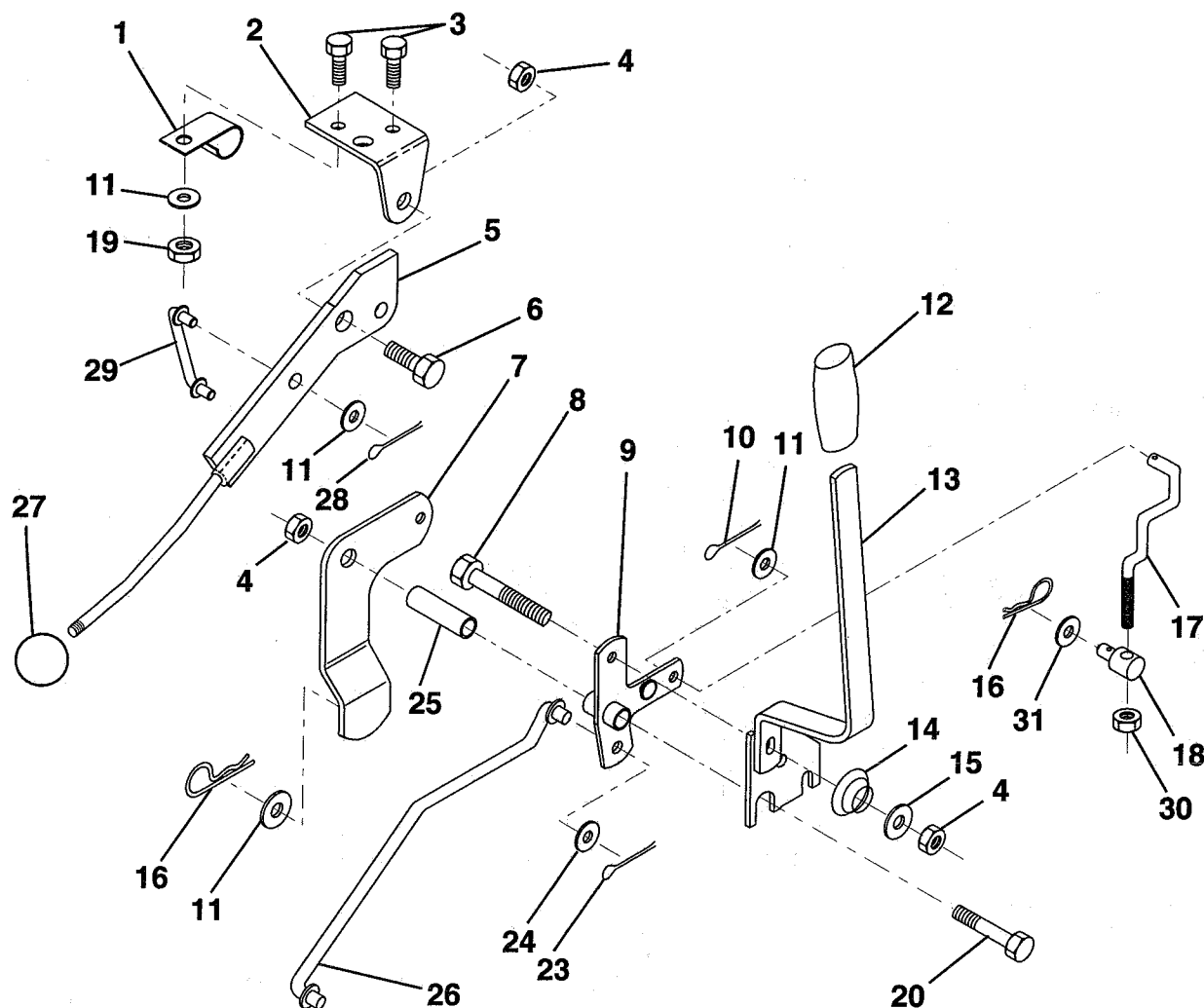
NOTE: All component dimensions given in U.S. inches.
1 inch = 25.4 mm.

HARDWARE SHOWN LARGER FOR EASIER IDENTIFICATION

REPAIR PARTS

TRACTOR - - MODEL NUMBER 6A1A1D

MOWER LIFT LEVER



| KEY NO. | PART NO. | DESCRIPTION |
|---------|----------|---|
| 1 | 126470X | Clip, Insulated |
| 2 | 122018X | Bracket, Mower Clutch |
| 3 | 71110408 | Bolt, Hex, Fin 1/4-20 UNC x 1/2 Grade 5 |
| 4 | 73680600 | Nut, Crownlock 3/8-16 |
| 5 | 145187 | Assembly, Clutch Lever |
| 6 | 106451X | Bolt, Shoulder |
| 7 | 135371 | Assembly, Mower Clutch Arm |
| 8 | 74760636 | Bolt, Hex 3/8-16 UNC x 2-1/4 |
| 9 | 121930X | Assembly, Bellcrank, Lift |
| 10 | 76020412 | Pin, Cotter 1/8 x 3/4 |
| 11 | 19131316 | Washer 13/32 x 13/16 x 16 Gauge |
| 12 | 131861 | Sleeve, Handle |
| 13 | 139352 | Assembly, Lift Handle |
| 14 | 123496X | Spring, Compression |
| 15 | 19131212 | Washer 13/32 x 3/4 x 12 Gauge |

| KEY NO. | PART NO. | DESCRIPTION |
|---------|----------|------------------------------------|
| 16 | 4921H | Retainer, Spring |
| 17 | 127359 | Link, Front Lift |
| 18 | 142028 | Trunnion, Threaded 3/8-16 |
| 19 | 73680400 | Nut, Crownlock 1/4-20 |
| 20 | 74760644 | Bolt, Hex, Fin. 3/8-16 UNC x 2-3/4 |
| 23 | 76020416 | Pin, Cotter 1/8 x 1 |
| 24 | 19171612 | Washer 17/32 x 1 x 12 Gauge |
| 25 | 121933X | Tube, Spacer |
| 26 | 141470 | Rod, Mower Lift |
| 27 | 106932X | Knob, Rd |
| 28 | 76020312 | Pin, Cotter 3/32 x 3/4 |
| 29 | 131655 | Link, Mower Clutch |
| 30 | 73350600 | Nut, Hex Jam 3/8-16 |
| 31 | 19132012 | Washer 13/32 x 1-1/4 x 12 Ga. |

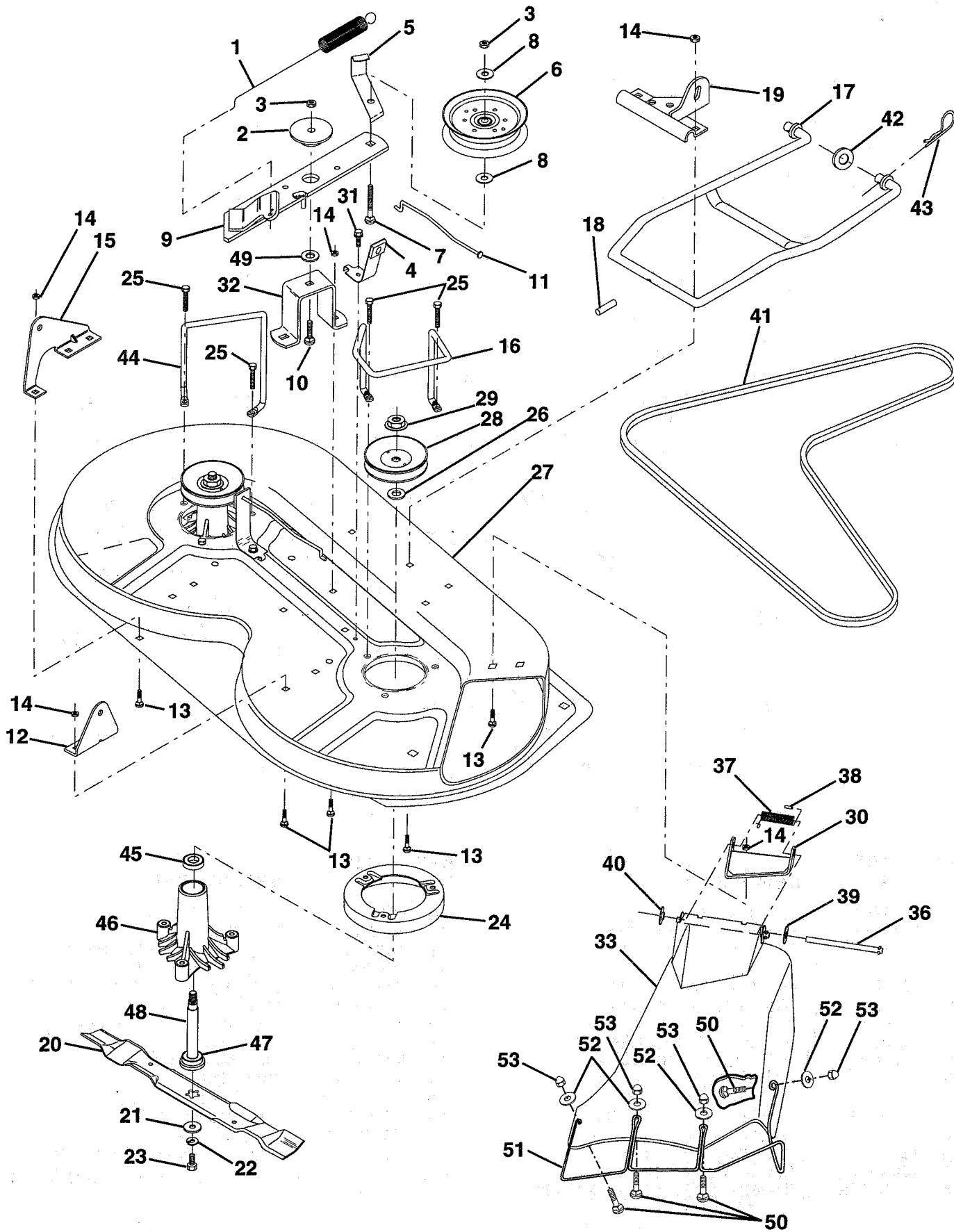
NOTE: All component dimensions given in U.S. inches.
1 inch = 25.4 mm.

HARDWARE SHOWN LARGER FOR EASIER IDENTIFICATION

REPAIR PARTS

TRACTOR - - MODEL NUMBER 6A1A1D

MOWER DECK



REPAIR PARTS

TRACTOR - - MODEL NUMBER 6A1A1D

MOWER DECK

| KEY NO. | PART NO. | DESCRIPTION | KEY NO. | PART NO. | DESCRIPTION |
|---------|----------|-----------------------------------|---------|----------|---|
| 1 | 140064 | Spring, Mower Clutch | 31 | 17490508 | Screw, Hex Washer Head, Thd. Roll. 5/16-18 x 1/2 |
| 2 | 122052X | Spacer, Retainer | 32 | 122051X | Arm, Support Idler, Mower |
| 3 | 73680600 | Nut, Crownlock 3/8-16 | 33 | 139083 | Shield, Deflector |
| 4 | 130840 | Assembly, Brake | 36 | 121980X | Rod, Hinge |
| 5 | 131251 | Guide, Belt Idler | 37 | 123713X | Spring, Torsion Deflector |
| 6 | 121316X | Idler, Flat | 38 | 105304X | Cap, Sleeve |
| 7 | 72110616 | Bolt, Carriage 3/8-16 x 2 Grade 5 | 39 | 19111016 | Washer 11/32 x 5/8 x 16 Gauge |
| 8 | 19131410 | Washer 13/32 x 7/8 x 10 Gauge | 40 | 110452X | Nut, Push |
| 9 | 127744 | Assembly, Mower Idler Arm | 41 | 131264 | V-Belt |
| 10 | 72140610 | Bolt, Carriage 3/8-16 x 1-1/4 | 42 | 19171616 | Washer 11/32 x 5/8 x 16 Gauge |
| 11 | 130841 | Rod, Brake | 43 | 3146R | Clip, Hairpin |
| 12 | 127356 | Bracket, Rear Lift, R.H. | 44 | 140608 | Keeper, L.H. |
| 13 | 72140506 | Bolt, Carriage 5/16-18 UNC x 3/4 | 45 | 110485X | Bearing |
| 14 | 73680500 | Nut, Lock Hex W/Ins 5/16-18 | 46 | 128774 | Housing, Mandrel, Vented |
| 15 | 127357 | Bracket, Rear Lift, L.H. | 47 | 129895 | Bearing |
| 16 | 140609 | Keeper, R.H. | 48 | 137645 | Shaft, Mandrel (Includes Key Number 47) |
| 17 | 128508 | Stabilizer, Mower Link | 49 | 133943 | Washer, Hardened |
| 18 | 128511 | Pin, Drive | 50 | 71161010 | Screw Truss Rd, Phil #10-24 x 5/8 |
| 19 | 127380 | Bracket, Stabilizer Link | 51 | 136383 | Guard, Dftr. MWR 36" TUV |
| 20 | 138496 | Blade, Mwr, 36" High Lift | 52 | 19070718 | Washer |
| 21 | 140296 | Washer, Hard Blade Mower Vented | 53 | 60867 | Nut, Acorn Hex #10-24 |
| 22 | 10030600 | Washer, Lock, Heavy 3/8 | -- | 130794 | Mandrel Assembly (Includes Key Numbers 21-23, 26, 29 and 45-48) |
| 23 | 850857 | Bolt 3/8-24 x 1-1/4 Grade 8 | -- | 144973 | Deck, Serv. 36, HP, LR |
| 24 | 140329 | Stripper | | | |
| 25 | 138776 | Screw, Thdrol. Hex Hd. | | | |
| 26 | 129963 | Washer .150 Thick | | | |
| 27 | 129983 | Housing, Mower | | | |
| 28 | 129207 | Pulley, Mandrel | | | |
| 29 | 137266 | Nut, Flangelock 9/16 | | | |
| 30 | 136631 | Bracket, Deflector | | | |

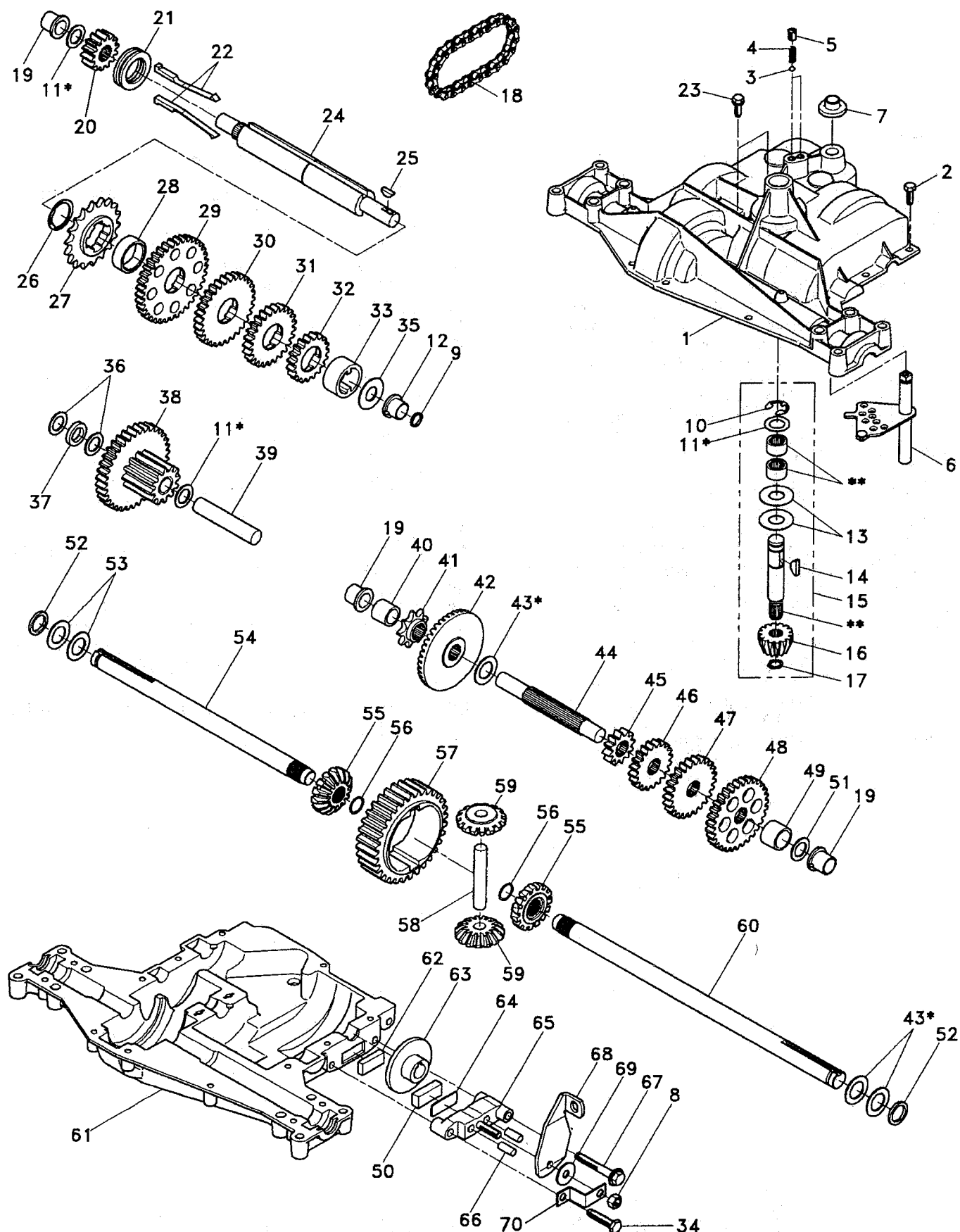
NOTE: All component dimensions given in U.S. inches.
1 inch = 25.4 mm.

HARDWARE SHOWN LARGER FOR EASIER IDENTIFICATION

REPAIR PARTS

TRACTOR - - MODEL NUMBER 6A1A1D

DANA TRANSAXLE - MODEL NUMBER 4360-77



REPAIR PARTS

TRACTOR - - MODEL NUMBER 6A1A1D

DANA TRANSAXLE - MODEL NUMBER 4360-77

| KEY PART NO. NO. | DESCRIPTION | KEY PART NO. NO. | DESCRIPTION |
|---------------------|---|---------------------|--|
| 1 142671 | Housing, Upper | 39 124639X | Shaft, Idler |
| 2 2274J | Screw, Self-Tapping, Large 1/4-20 x .734 | 40 120472X | Spacer .635 x .875 x .755 |
| 3 134400 | Ball, Detent | 41 105928X | Sprocket, 9 Teeth (Reverse) |
| 4 105904X | Spring, Detent | 42 110084X | Gear, Bevel, 42 Teeth |
| 5 105905X | Screw, Set | 43 134394 | * Assembly, Kit, Shim .750 Shaft |
| 6 138235 | Kit, Shifter Assembly | 44 120473X | Shaft, Drive |
| 7 134399 | Boot, Shifter | 45 142678 | Gear, Spur, 12 Teeth (1 st) |
| 8 73810500 | Locknut 5/16-24 | 46 120407X | Gear, Spur, 20 Teeth (2 nd) |
| 9 143045 | Seal, Oil | 47 106589X | Gear, Spur, 25 Teeth (3 rd) |
| 10 142672 | Ring, Retaining | 48 105937X | Gear, Spur, 31 Teeth (4 th) |
| 11 134793 | * Assembly, Kit, Shim .625 Shaft | 49 120523X | Spacer .781 x 1.00 x .750 |
| 12 143051 | Bearing, Flange | 50 120951X | Puck, Friction |
| 13 120415X | Washer, Plain .632 x 1.38 x .046 | 51 2226J | Washer, Plain .632 x 1.00 x .060 |
| 14 142674 | Key, Woodruff, #9 | 52 134401 | Washer, Neoprene |
| 15 138234 | Assembly, Kit, Input Shaft | 53 2264J | Washer, Plain .758 x 1.25 x .031 |
| 16 110078X | Pinion, Bevel, 14 Teeth | 54 120474X | Axle, L.H. |
| 17 105909X | Ring, Retaining | 55 110081X | Gear, Miter, 15 Teeth |
| 18 105910X | Chain, 24 Pitches | 56 105941X | Ring, Retaining |
| 19 105911X | Bearing, Flange | 57 110071X | Gear, Spur, 32 Teeth |
| 20 142675 | Gear, Spur, 14 Teeth | 58 120952X | Shaft, Cross |
| 21 138246 | Collar, Clutch | 59 110082X | Gear, Miter, 15 Teeth |
| 22 138236 | Assembly, Kit, Clutch Keys | 60 120475X | Axle, R.H. |
| 23 134791 | Screw, Tapping w/Sealer | 61 142680 | Housing, Lower |
| 24 142676 | Shaft, Intermediate | 62 120961X | Puck, Friction |
| 25 2244J | Key, Woodruff, #61 | 63 7294J | Disc, Brake |
| 26 105916X | Ring, Retaining | 64 108989X | Spacer |
| 27 120470X | Sprocket, 18 Teeth (Reverse) | 65 120953X | Jaw, Brake |
| 28 110070X | Spacer | 66 120954X | Pin, Dowel |
| 29 142677 | Gear, Spur, 37 Teeth (1 st) | 67 134799 | Screw, Self-Tapping, Large 5/16-18 x 2.25 |
| 30 120405X | Gear, Spur, 30 Teeth (2 nd) | 68 138244 | Lever, Actuating |
| 31 108980X | Gear, Spur, 25 Teeth (3 rd) | 69 108996X | Washer, Plain .321 x 1.00 x .055 |
| 32 134796 | Gear, Spur, 19 Teeth (4 th) | 70 120956X | Bracket, Anti-Rotation |
| 33 138239 | Spacer 1.133 x 1.50 x .750 | 71 120416X | Grease |
| 34 106596X | Screw, Self-Tapping, Large 5/16-18 x 1.44 | | |
| 35 105925X | Washer, Plain .640 x 1.37 x .061 | | |
| 36 2232J | Washer, Plain .632 x 1.00 x .026 | | |
| 37 108978X | Spacer .630 x 1.00 x .169 | | |
| 38 110079X | Assembly, Gear, Combination of 12 Teeth and 35 Teeth | | |

* Use in combinations to maintain proper clearances

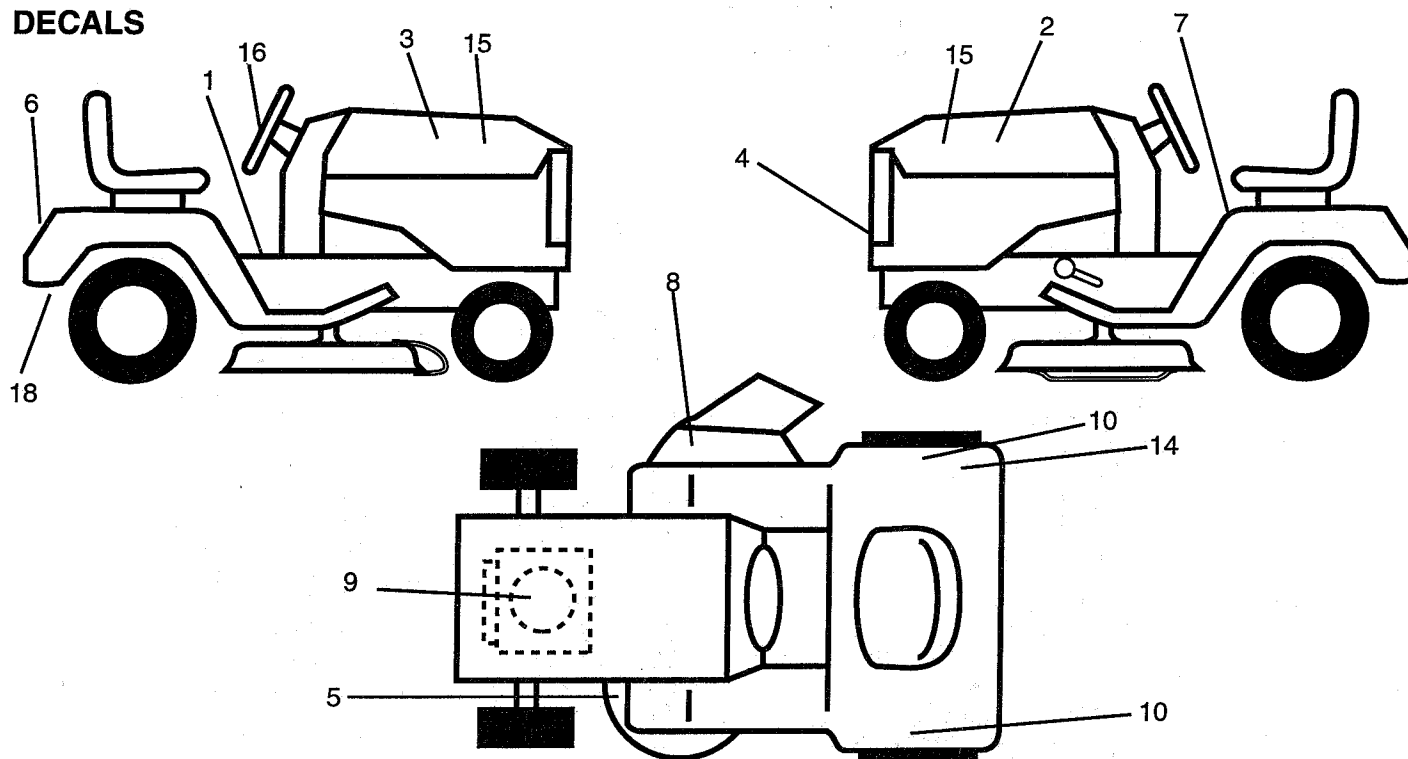
** Order Key No. 15

NOTE: All component dimensions given in U.S. inches
1 inch = 25.4 mm

REPAIR PARTS

TRACTOR -- MODEL NUMBER 6A1A1D

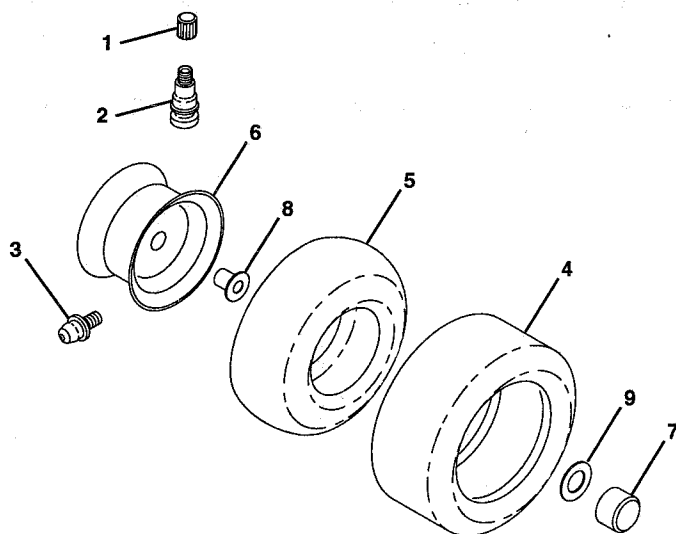
DECALS



| KEY NO. | PART NO. | DESCRIPTION |
|---------|----------|-----------------------------------|
| 1 | 145545 | Decal, Inst. Oper. E/F |
| 2 | 141744 | Decal, Stripe, Hood, L.H. |
| 3 | 141743 | Decal, Stripe, Hood, R.H. |
| 4 | 132627 | Decal, Grill |
| 5 | 136830 | Decal, V-Belt Sch. |
| 6 | 132628 | Decal, Fender |
| 7 | 145498 | Decal, Caution, Read Owner's Man. |
| 8 | 145494 | Decal, International Cutfinger |
| 9 | 272747 | Decal, Engine |
| 10 | 138804 | Decal, Fend. Quickshf. |

| KEY NO. | PART NO. | DESCRIPTION |
|--|----------|---------------------------------|
| 12 | 146451 | Decal, Caution, Battery |
| 14 | 125690X | Decal 100 DbA |
| 15 | 127032 | Decal, Hood 10 HP 4 Sp. |
| 16 | 127075 | Decal, Wheel Steering |
| 18 | 145437 | Decal, Europe Stan. CE Tractors |
| -- | 138311 | Decal, Height Adj |
| -- | 152625 | Manual, Operator's (Eng) |
| -- | 152626 | Manual, Operator's (Fr) |
| -- | 152153 | Manual, Repair Parts (Eng/Fr) |
| Available accessories not included with tractor: | | |
| | C36 | Grass Catcher |
| | MK36 | Mulcher Kit |

TIRES & WHEELS



| KEY NO. | PART NO. | DESCRIPTION |
|---------|------------|-------------------------------|
| 1 | 59192 | Cap, Valve |
| 2 | 65139 | Stem, Valve |
| 3 | 278H | Fitting, Grease (Front Only) |
| 4 | 124142X | Tire, Front |
| | 124143X | Tire, Rear |
| 5 | 59904 | Tube, Tire, Front |
| | 8134H | (Optional, Service Item Only) |
| | | Tube, Tire, Rear |
| | | (Optional, Service Item Only) |
| 6 | 137237X427 | Rim Assembly, Front |
| | 140325X427 | Rim Assembly, Rear |
| 7 | 104757X | Cap, Axle |
| 8 | 9040H | Bearing, Flange (Front Only) |
| 9 | 121748X | Washer, Axle Cap |
| -- | 144334 | Sealant, Tire (10 oz. Tube) |

NOTE: All component dimensions given in U. S. inches
1 inch = 25.4 mm