

REPAIR PARTS MANUAL

MODEL NO. SO17542LT (96012011800)

17.5 HP* 42 INCH

LAWN TRACTOR

For Parts and Service, contact our authorized distributor:
call 1-800-849-1297 For Technical Assistance: call 1-800-829-5886

*As rated by the engine manufacturer



SOUTHERN STATES

HOW TO USE THIS MANUAL

This manual is designed to provide the customer with a means to identify the parts on his/her tractor when ordering repair parts. The illustrations may or may not represent the actual assemblies; therefore, it is not recommended to use this manual as a guide to assemble or disassemble the tractor. Some hardware and parts are drawn larger in order to more readily identify them.

Each tractor has its own model number.

The model number for your tractor can be found on the fender under the seat.

When ordering parts, always give the following information:

- Product - “Tractor”
- Model Number - “SO17542LT (96012011800)”
- Part Number
- Part Description

TABLE OF CONTENTS

SCHEMATIC 3

ELECTRICAL..... 4-5

CHASSIS 6-7

DRIVE..... 8-9

ENGINE..... 10-11

STEERING 12-13

SEAT 14

DECALS..... 15

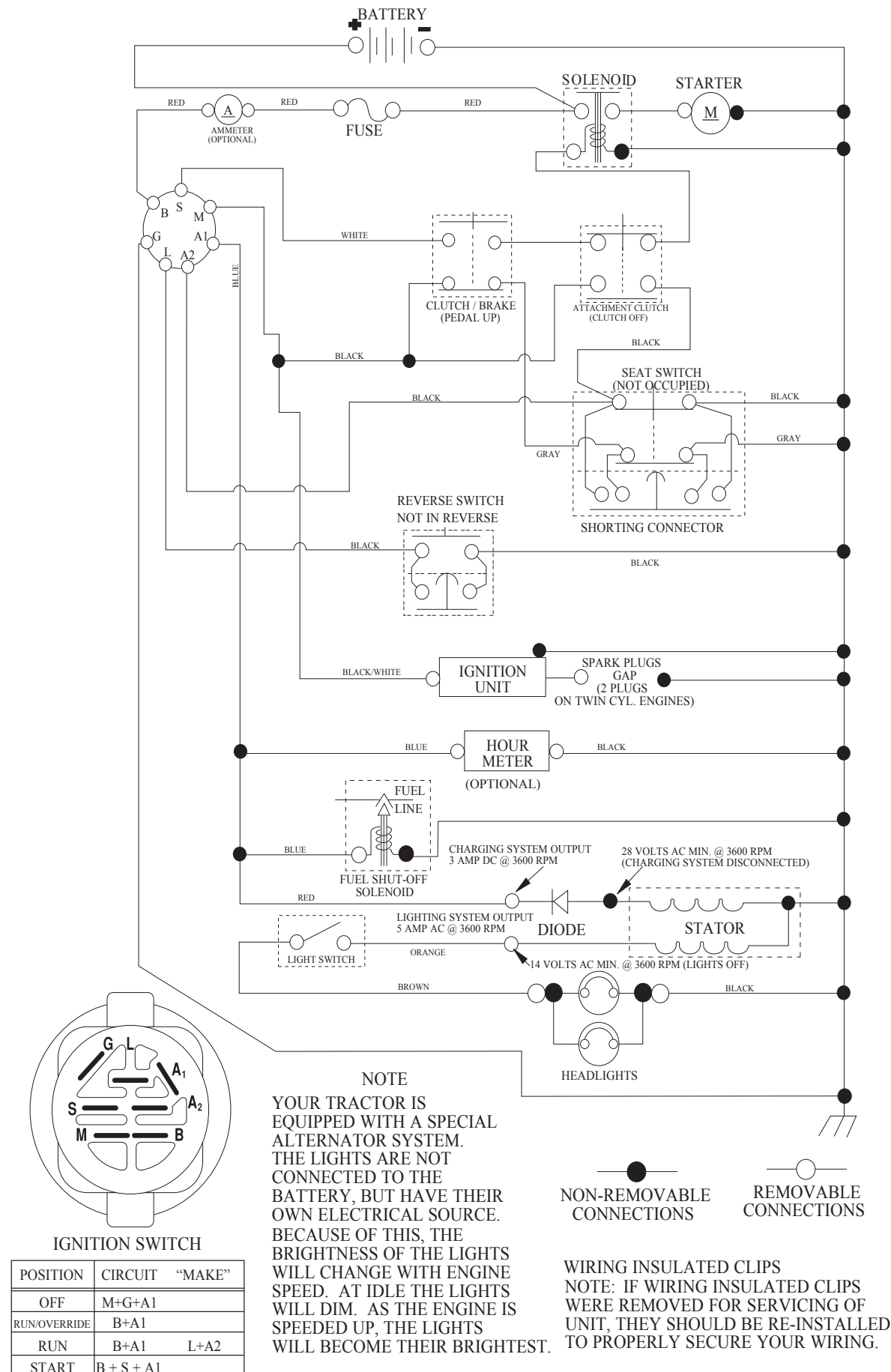
MOWER DECK 16-17

MOWER LIFT..... 18

WARRANTY.....BACK PAGE

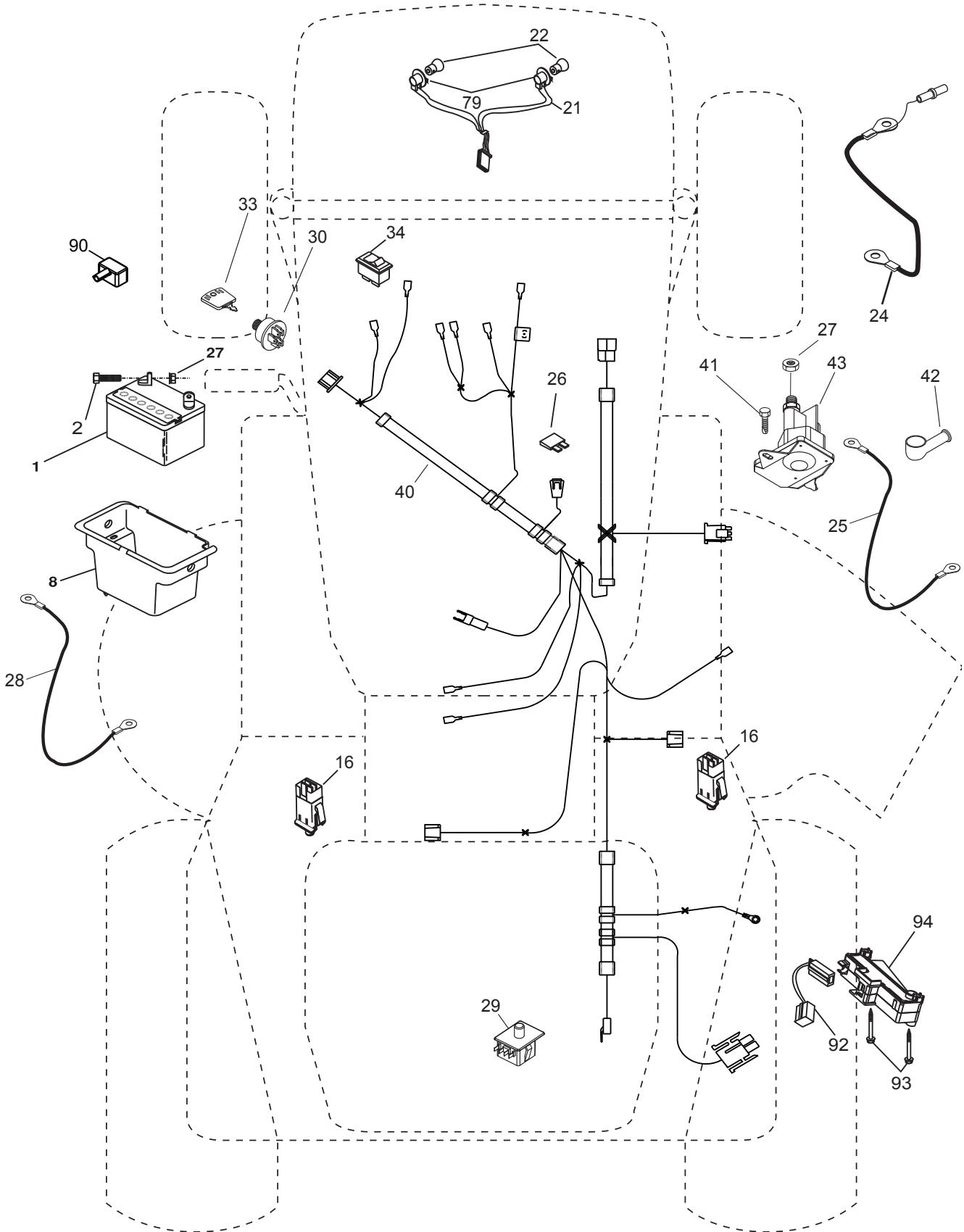
TRACTOR - MODEL NUMBER SO17542LT (96012011800), PRODUCT NO. 960 12 01-18
SCHEMATIC

SCH03



TRACTOR - MODEL NUMBER SO17542LT (96012011800), PRODUCT NO. 960 12 01-18
ELECTRICAL

L02

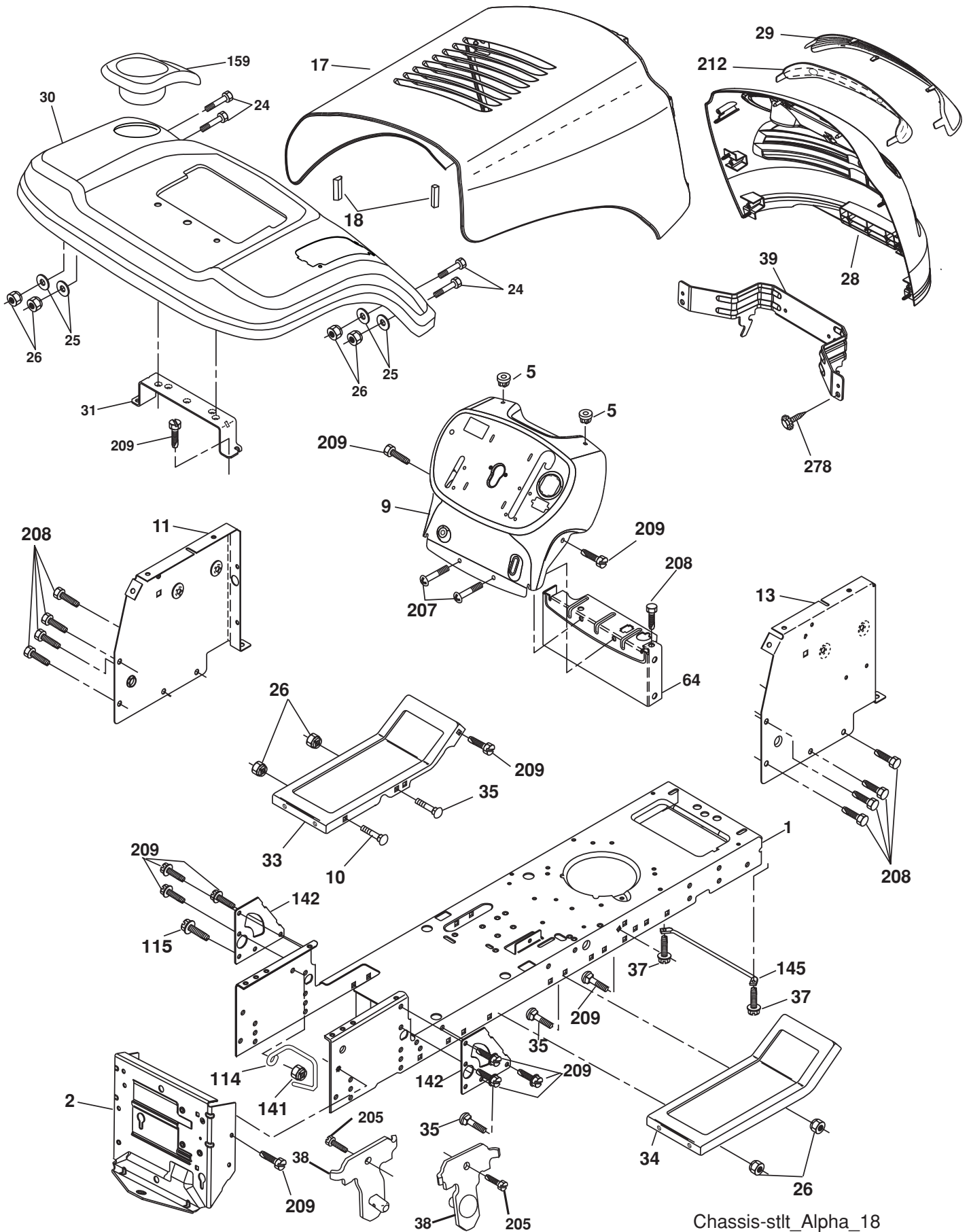


**TRACTOR - MODEL NUMBER SO17542LT (96012011800), PRODUCT NO. 960 12 01-18
ELECTRICAL**

KEY NO.	PART NO.	DESCRIPTION
1	163465	Battery
2	74760412	Bolt Hex Hd 1/4-20 unc x 3/4
8	176689	Box Battery
16	176138	Switch Interlock
21	175688	Harness Asm Light w/4152j
22	4152J	Bulb Light #1156
24	421297	Cable Battery
25	421299	Cable Battery 6 Ga. 11" Red
26	175158	Fuse 20 AMP
27	73510400	Nut Keps Hex 1/4-20 unc
28	421298	Cable Ground 6 Ga. 12" Black
29	192749	Switch Seat
30	193350	Switch Ign
33	411933	Key/Chain
34	110712X	Switch Light/Reset
40	197428	Harness Ign
41	71110408	Bolt Blk Fin Hex 1/4-20
42	131563	Cover Terminal Red
43	192507	Solenoid
79	175242	Socket Asm. Bulb Twistlock
90	435395	Cover Terminal Battery
92	196615	Harness Pigtail
93	192540	Screw Plastite 10-14 x 2.0
94	191834	Module Reverse ROS

NOTE: All component dimensions given in U. S. inches
1 inch = 25.4 mm.

TRACTOR - MODEL NUMBER SO17542LT (96012011800), PRODUCT NO. 960 12 01-18
CHASSIS



Chassis-stlt_Alpha_18

**TRACTOR - MODEL NUMBER SO17542LT (96012011800), PRODUCT NO. 960 12 01-18
CHASSIS**

KEY NO.	PART NO.	DESCRIPTION
1	174619	Chassis
2	176554	Drawbar, Stretch
5	155272	Bumper, Hood/Dash
9	428394X010	Dash
10	72140608	Bolt, Carriage 3/8-16 x 1
11	174996	Panel Dash LH
13	172105X010	Panel Slkscr Dash RH
17	187559X667	Hood
18	184921	Bumper Hood
24	74780616	Bolt Fin Hex 3/8-16 unc x 1 Gr. 5
25	19131312	Washer 13/32 x 13/16 x 12 Ga.
26	73800600	Nut Lock Hex w/Ins 3/8-16 unc
28	187565X428	Grille
29	187567X599	Lens Grille Bar
30	192528X667	Fender
31	136619	Bracket Fender Repl 109873X
33	179716X667	Footrest Pnt LH
34	179717X667	Footrest Pnt RH
35	72110606	Bolt Rdhd Sht Sqnk 3/8-16 x 3/4
37	17490508	Screw Thdrol 5/16-18 x 1/2 TYT
38	175710	Bracket Asm. Pivot Mower
39	187568	Bracket Pivot
64	154798	Dash Lower
114	158112	Keeper Belt Rear LH
115	17060620	Screw 3/8-16 x 1-1/4
141	73900600	Nut Lock Flg. 3/8-16 unc
142	175702	Plate Reinforcement
145	409167	Rod Pivot Hood
159	169473X428	Cupholder
205	17490608	Screw Thdrol 3/8-16 x 1/2
207	17670508	Screw 5/16-18 x 1/2
208	17670608	Screw Thdrol 3/8-16 x 1/2
209	17000612	Screw Hex Wsh Thdrol 3/8-16
212	187569	Insert Lens Reflect
278	416358	Screw #10 x 0.750 BOS Thread
- -	5479J	Plug Button Blk 359 Dia Choke
- -	187801	Plug Dome Plastic

NOTE: All component dimensions given in U.S. inches
1 inch = 25.4 mm.

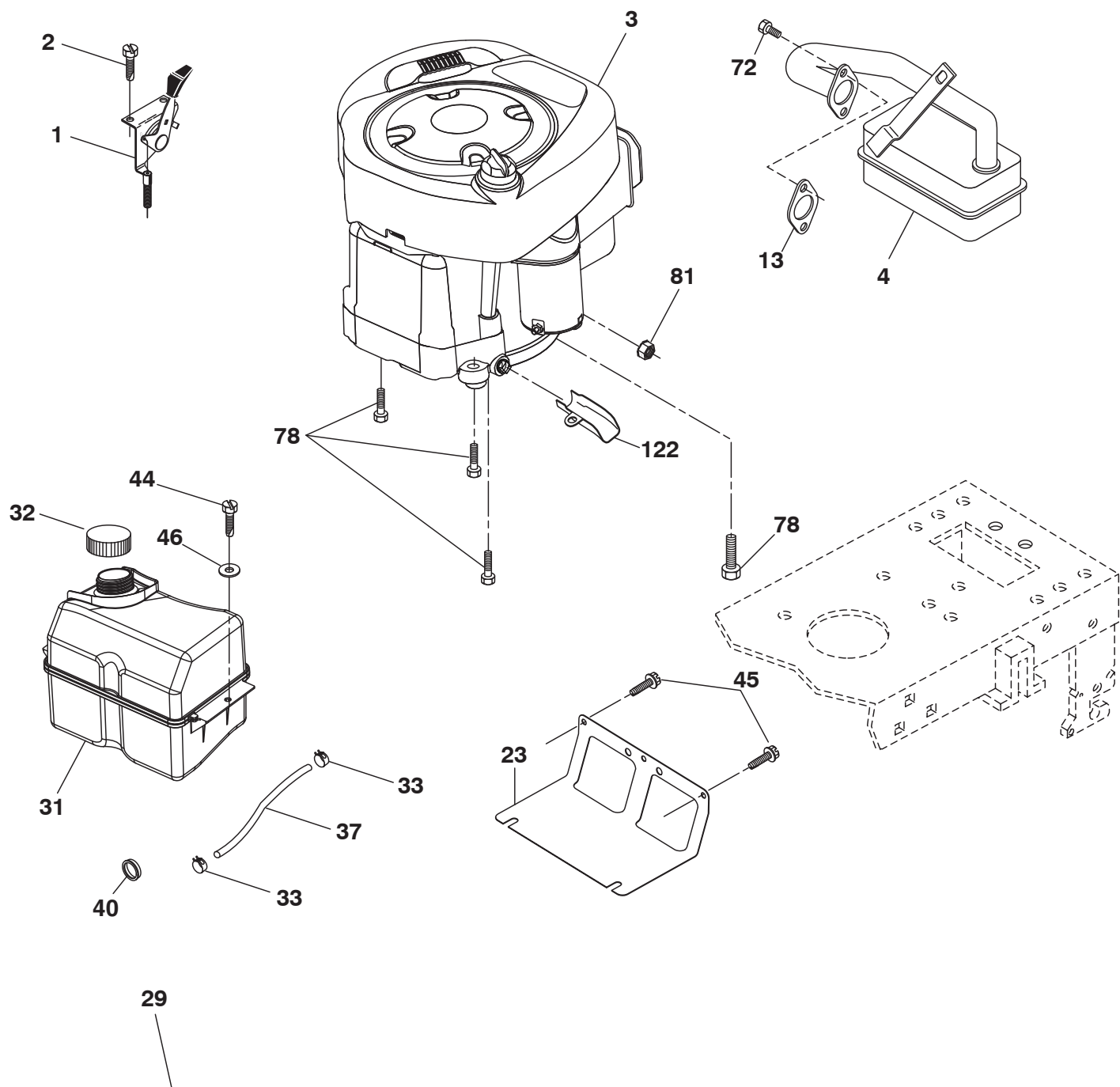
[illegible]

TRACTOR - MODEL NUMBER SO17542LT (96012011800), PRODUCT NO. 960 12 01-18 DRIVE

KEY NO.	PART NO.	DESCRIPTION
1	— — — —	Transaxle Peerless Model 206-545C (Order parts from transaxle manufacturer)
2	146682	Spring Return Brake
3	123666X	Pulley Transaxle 18" Tires
4	12000028	Ring Retainer # 5100-62
5	121520X	Strap Torque 30 Degrees RH
6	17060512	Screw 5/16-18 x 3/4
8	192706	Rod Shifter Blk
10	76020416	Pin Cotter 1/8 x 1 Cad
11	105701X	Washer Plate Shf 388 Sq Hole
13	74550412	Bolt 1/4-28 unf Gr. 8 w/Patch
14	10040400	Washer Lock Hvy Helical 1/4
16	73800500	Nut 5/16-18
18	74780616	Bolt Fin Hex 3/8-16 unc x 1 Gr. 5
19	73800600	Nut Lock Hex w/Ins 3/8-16 unc
21	106933X	Knob
22	130804	Rod Brake LT
24	73350600	Nut Hex Jam 3/8-16 unc
25	106888X	Spring Rod Brake 2 00 Zinc
26	19131316	Washer 13/32 x 13/16 x 16 Ga.
27	76020412	Pin Cotter 1/8 x 3/4 Cad
28	175765	Rod Brake Parking LT/YT
29	71673	Cap Brake Parking
30	169592	Bracket Transaxle
32	74760512	Bolt Fin Hex 5/16-18 x 3/4
34	175578	Shaft Asm Pedal Foot Nibbed
35	120183X	Bearing Nylon Blk 629 Id
36	19211616	Washer 21/32 x 1 x 16 Ga.
37	1572H	Pin Roll 3/16 x 1"
38	179114	Pulley Composite Flat
39	72110622	Bolt 3/8-16 x 2-3/4
41	175556	Keeper Belt Idler
47	127783	Pulley Idler V Groove Plastic
48	154407	Bellcrank Clutch Grnd Drv STL
49	123205X	Retainer Belt Style Spring
50	72110612	Bolt Carr Sh 3/8-16 x 1-1/2 Gr. 5
51	73680600	Nut Crownlock 3/8-16 unc
52	73680500	Nut Crownlock 5/16-18 unc
53	199652	Link Clutch
55	105709X	Spring Return Clutch 6 75
56	17060620	Screw 3/8-16 x 1-1/4
57	138255	V-Belt Ground Drive 95.25
62	8883R	Cover Pedal Blk Round
63	175410	Engine Pulley LT/YT

KEY NO.	PART NO.	DESCRIPTION
64	173937	Bolt Hex 7/16-20 x 4 Gr. 5
65	10040700	Washer Lock Hvy Hlcl Spr 7/16
66	154778	Keeper Belt Engine
69	142432	Screw 1/4 x 1/2 unc
70	134683	Guide Belt Mower Drive RH
74	137057	Spacer Axle
75	121749X	Washer 25/32 x 1 1/4 x 16 Ga.
76	12000001	E-ring #5133-75
77	123583X	Key Square 2 0 x 1845/ 1865
78	121748X	Washer 25/32 x 1-5/8 x 16 Ga.
79	2228M	Key Woodruff
80	145090	Arm Shift Transaxle
81	165592	Shaft Asm Cross Taper
82	165711	Spring Torsion Shift
83	19171216	Washer 17/32 x 3/4 x 16 Ga.
84	166231	Link Transaxle
85	150360	Nut Lock Center 1/4-28
89	192053X428	Console Shift
96	4497H	Retainer Spring 1"
112	19091210	Washer 9/32 x 3/4 x 10 Ga.
113	127285X	Strap Torque 90 Degrees LH
116	72140608	Bolt Rdhd Sq Neck 3/8-16 x 1
120	73900600	Nut Lock Flg 3/8-16
145	74490540	Bolt 5/16-18 x 2-1/2 G5
150	175456	Spacer Retainer Lt
151	19133210	Washer 13/32 x 2 x 10 Ga.
156	166002	Washer Srrrtd 5/16 ID x 1.0 x .125
158	437458	Bracket Shift Mount
159	183900	Hub Shift
161	72140406	Bolt 1/4-20 x 3/4 Gr. 5
162	73680400	Nut Crownlock 1/4-20 unc
163	74780416	Bolt Hex Fin 1/4-20 unc x 1 Gr. 5
165	438250	Bracket Pivot Lever
166	17490510	Screw 5/16-18 x 5/8
168	165492	Bolt Shoulder 5/16-18 x .561
169	165580	Plate Fastening
170	187414	Keeper, Belt Transaxle
197	169613	Nyliner Snap-In 5/8
198	169593	Washer Nylon
202	72110614	Bolt Carr Sh 3/8-16 x 1-3/4 Gr. 5

NOTE: All component dimensions given in U.S. inches
1 inch = 25.4 mm



OPTIONAL EQUIPMENT
Spark Arrester

engine-stlt_bs_38

TRACTOR - MODEL NUMBER SO17542LT (96012011800), PRODUCT NO. 960 12 01-18 ENGINE

KEY NO.	PART NO.	DESCRIPTION
1	170551	Control Th/ch Flag
2	17720408	Screw Hex Thd Cut 1/4-20 x 1/2
3	— — — —	Engine, B&S 31C707-3346-G1 (Order parts from engine manufacturer)
4	137352	Muffler Exhaust B&S
13	165291	Gasket Eng 1 313 Id Tin Plated
23	169837	Shield BRN/DBR Guard
29	137180	Kit Spark Arrestor (Flat Scrn)
31	407545	Tank Fuel Front
32	438596	Cap Fuel
33	123487X	Clamp Hose
37	401137	Line Fuel 20"
40	124028X	Bushing Snap Nyl Blk Fuel Line
44	17670412	Screw Thdrol 1/4-20 x 3/4
45	17000612	Screw Hex Wsh Thdrol 3/8-16
46	19091416	Washer 9/32 x 7/8 x 16 Ga.
72	192334	Screw Socket Head 5/16-18 x 3/4
78	17060620	Screw 3/8-16 x 1-1/4
81	73510400	Nut Keps Hex 1/4-20 unc
122	421922	Extension Drain Oil

NOTE: All component dimensions given in U.S. inches
1 inch = 25.4 mm

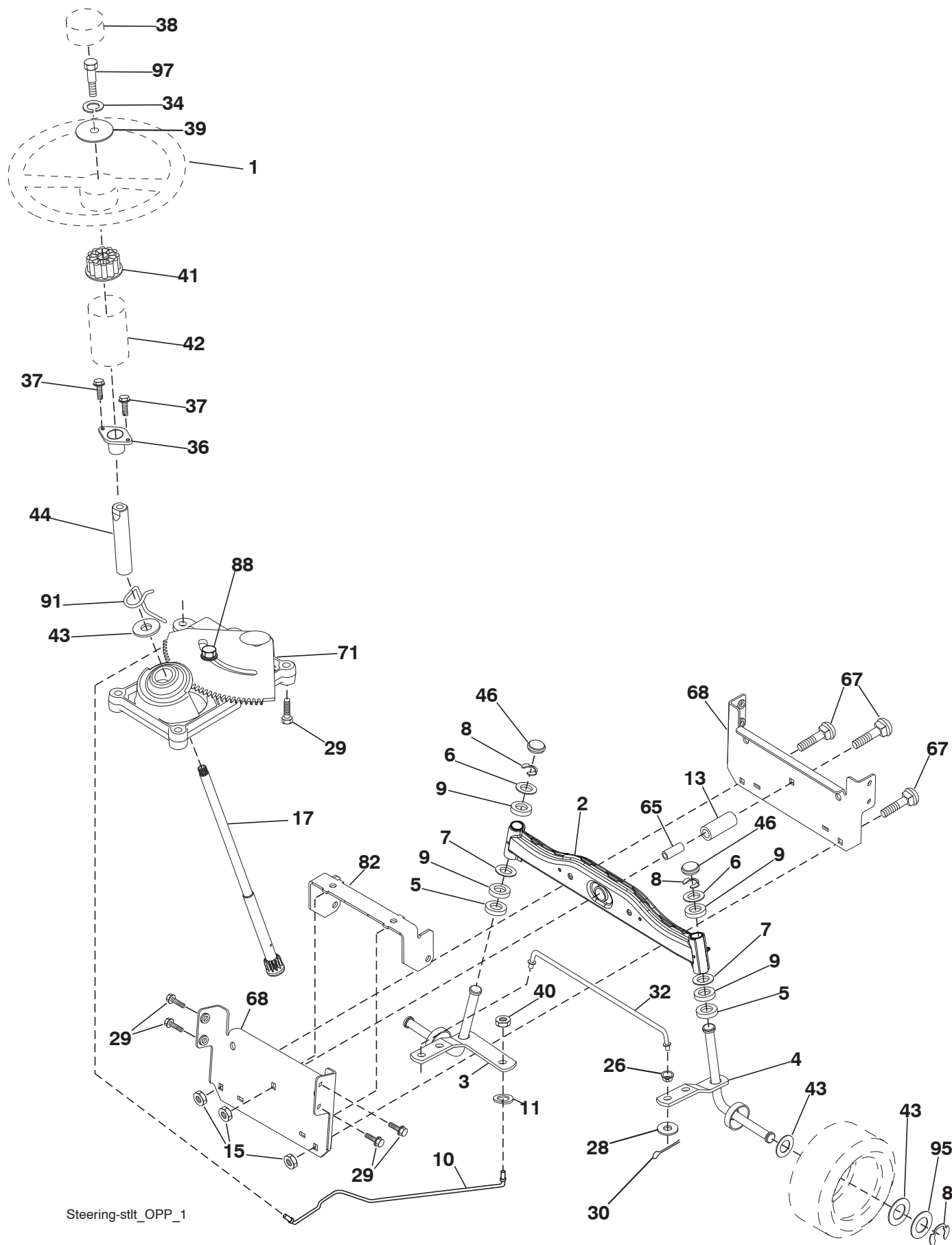
For engine service and replacement parts, call the toll free
number for your engine manufacturer listed below:

Briggs & Stratton 1-800-233-3723

Engine Power Rating Information

The gross power rating for individual gas engine models is labeled in accordance with SAE (Society of Automotive Engineers) code J1940 (Small Engine Power & Torque Rating Procedure), and rating performance has been obtained and corrected in accordance with SAE J1995 (Revision 2002-05). Torque values are derived at 3060 RPM; horsepower values are derived at 3600 RPM. Actual gross engine power will be lower and is affected by, among other things, ambient operating conditions and engine-to-engine variability. Given both the wide array of products on which engines are placed and the variety of environmental issues applicable to operating the equipment, the gas engine will not develop the rated gross power when used in a given piece of power equipment (actual "on-site" or net power). This difference is due to a variety of factors including, but not limited to, accessories (air cleaner, exhaust, charging, cooling, carburetor, fuel pump, etc.), application limitations, ambient operating conditions (temperature, humidity, altitude), and engine-to-engine variability. Due to manufacturing and capacity limitations, Briggs & Stratton may substitute an engine of higher rated power for this Series engine.

TRACTOR - MODEL NUMBER SO17542LT (96012011800), PRODUCT NO. 960 12 01-18
STEERING



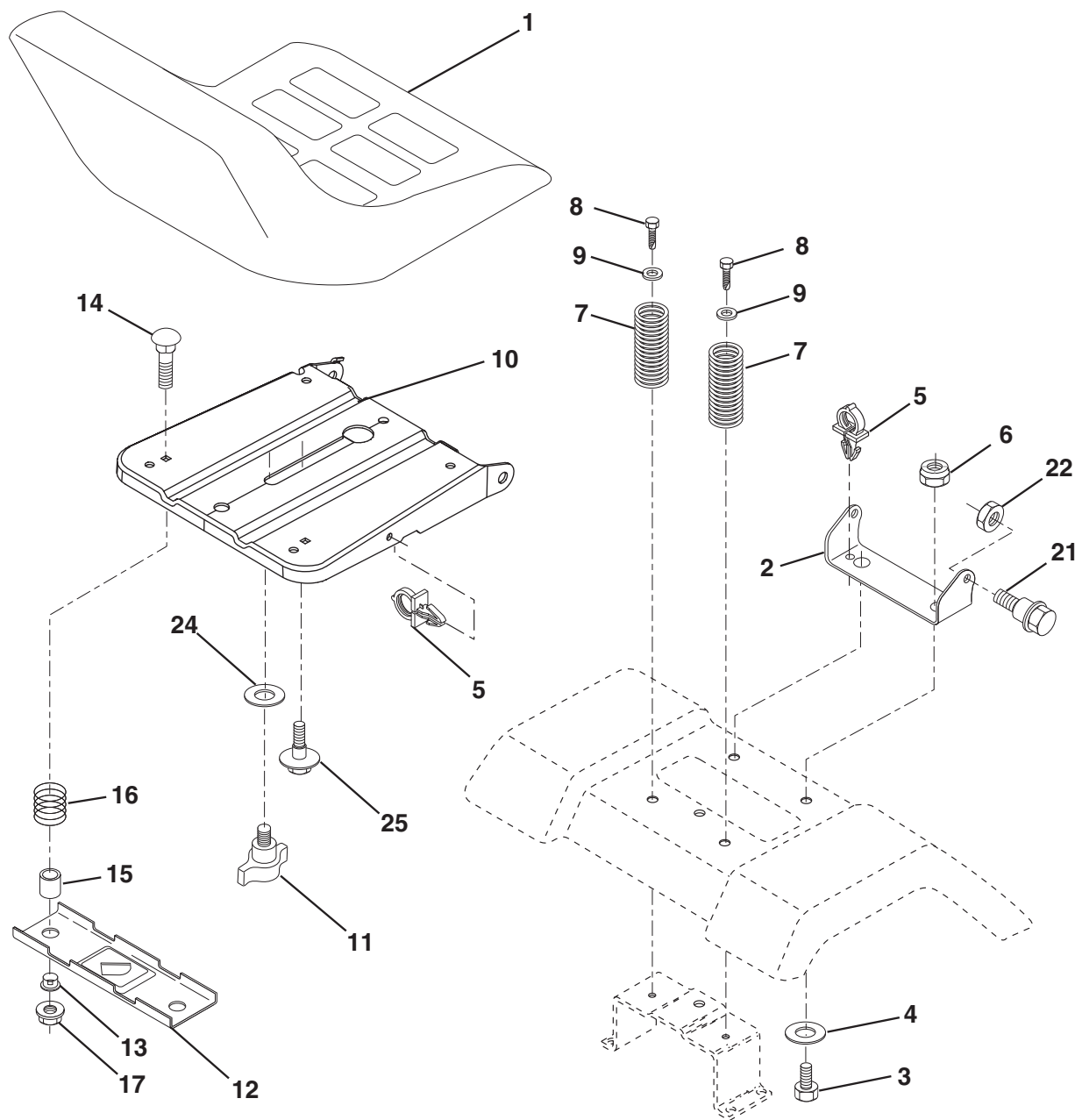
Steering-stltt_OPP_1

**TRACTOR - MODEL NUMBER SO17542LT (96012011800), PRODUCT NO. 960 12 01-18
STEERING**

KEY NO.	PART NO.	DESCRIPTION
1	414803X428	Wheel Steering
2	418168	Axle Asm
3	169840	Spindle Asm LH
4	169839	Spindle Asm RH
5	6266H	Bearing Race Thrust Harden
6	121748X	Washer 25/32 x 1-5/8 x 16 Ga.
7	19272016	Washer 27/32 x 1-1/4 x 16 Ga.
8	12000029	Ring Clip #T5304-75
9	3366R	Bearing Col Strg Blk
10	175121	Link Drag
11	10040600	Washer Lock Hvy Hlcl Spr 3/8
13	136518	Spacer Bearing Axle Front
15	73900600	Nut flange Lock
17	411386	Shaft Asm Strg
26	126847X	Bushing Link Drag Blk LR
28	19131416	Washer 13/32 x 7/8 x 16 Ga.
29	17000612	Screw 3/8-16 x 3/4
30	76020412	Pin Cotter 1/8 x 3/4 Cad
32	192757	Rod Tie Wire Form 19 75 Mech
34	10040500	Washer Lock 5/16
36	155099	Bushing Strg 5/8 Id Dash
37	152927	Screw
38	414854X428	Cap Wheel Steering
39	19113812	Washer 11/32 x 2 x 12 Ga.
40	73540600	Nut Crownlock 3/8-24
41	186737	Adaptor Wheel Strg
42	145054X428	Boot Dash Mtl Steering Blk
43	121749X	Washer 25/32 x 1 1/4 x 16 Ga.
44	190752	Extension Steering
46	121232X	Cap Spindle Fr Top Blk
65	414736	Spacer Brace Axle
67	72110618	Bolt RDHD SQNK 3/8-16 x 2-1/4
68	169827	Brace Axle
71	175146	Steering Asm.
82	199978	Bracket Susp Chassis Front
88	175118	Bolt Shoulder 7/16-20
91	175553	Clip Steering
95	188967	Washer Harden .793 x 1.637 x .060
97	428982	Bolt 5/16-18 x 4 w/Patch

NOTE: All component dimensions given in U.S. inches
1 inch = 25.4 mm.

**TRACTOR - MODEL NUMBER SO17542LT (96012011800), PRODUCT NO. 960 12 01-18
SEAT**



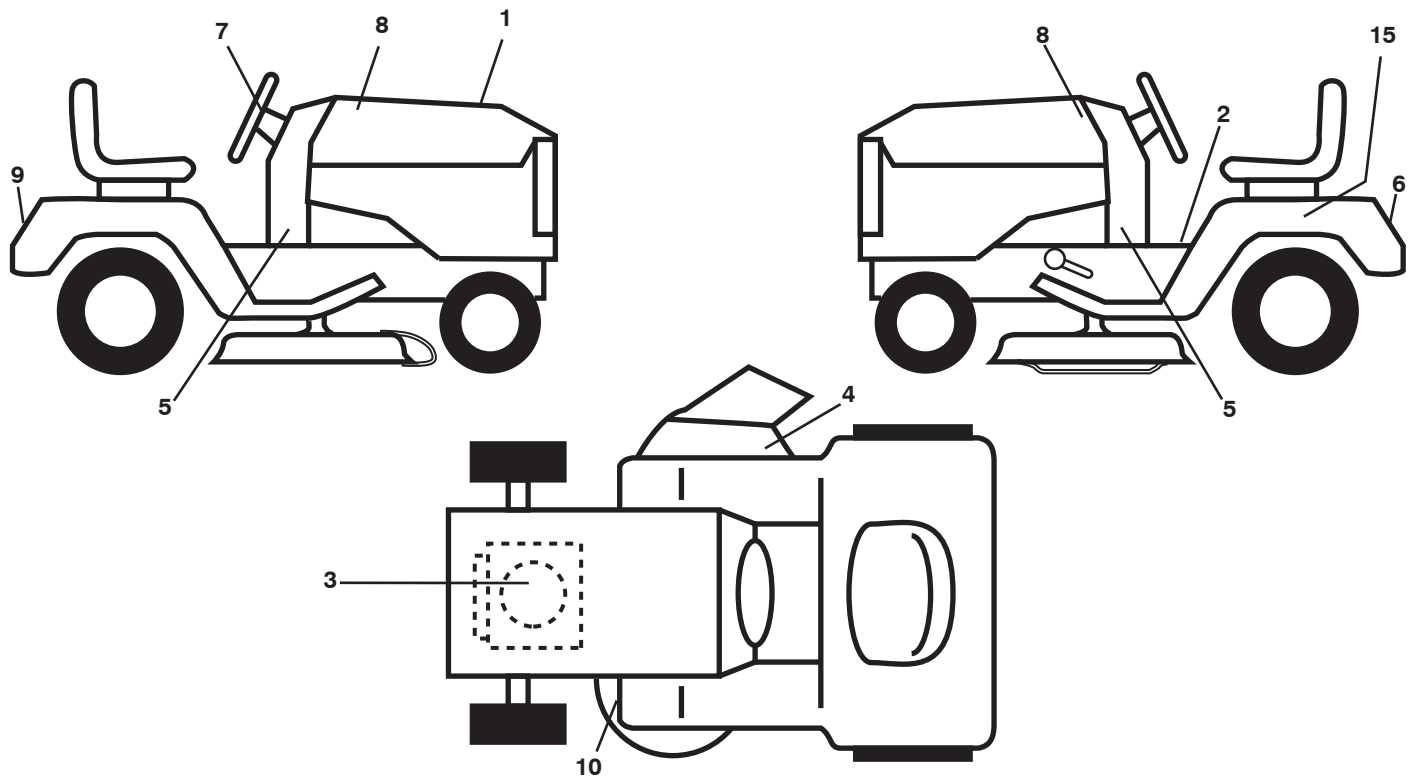
seat-stlt_knob_1

KEY NO.	PART NO.	DESCRIPTION
1	188713	Seat
2	140551	Bracket Seat Pivot
3	71110616	Bolt Hex 3/8-16 x 1
4	19131610	Washer 13/32 x 1 x10 Ga.
5	145006	Clip Push-In Hinged
6	73800600	Nut Lock Hex w/Ins 3/8 - 16
7	124181X	Spring Seat Cprsn 2 250 Blk Zi
8	17000616	Screw 3/8-16 x 1.5
9	19131614	Washer 13/32 x 1 x 14 Ga.
10	195530	Pan Pnt Seat
11	166369	Knob
12	174648	Bracket Pnt Mounting Switch

KEY NO.	PART NO.	DESCRIPTION
13	121248X	Bushing Snap Blk Nyl
14	72050412	Bolt Rdhd Sht Nk 1/4 - 20 x 1 -1/2
15	134300	Spacer Split .28 x .96
16	121250X	Spring Cprsn
17	123976X	Nut Lock 1/4 Lge Flg
21	171852	Bolt Shoulder 5/16-18 unc-2A
22	73800500	Nut Lock Hex w/Ins 5/16 - 18
24	19171912	Washer 17/32 x 1-3/16 x 12 Ga.
25	127018X	Bolt Shoulder 5/16-18 x .62

NOTE: All component dimensions given in U.S. inches
1 inch = 25.4 mm.

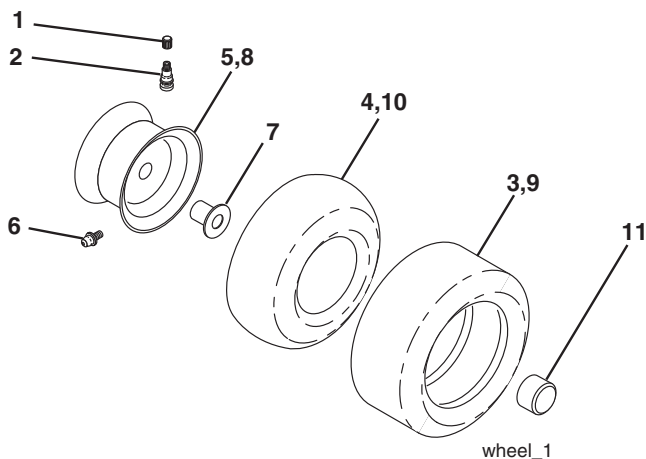
TRACTOR - MODEL NUMBER SO17542LT (96012011800), PRODUCT NO. 960 12 01-18
DECALS



KEY NO.	PART NO.	DESCRIPTION
1	438425	Decal, RPL
2	411657	Decal, Warning Symbols
3	431092	Decal, Engine HP
4	170563	Decal, Warning Cutfinger
5	441324	Decal, Lower Dash
6	438160	Label EPA Compliance
7	441323	Decal, Ins Str Wh
8	441109	Decal, Hood LH

KEY NO.	PART NO.	DESCRIPTION
9	190429	Decal, Fender
10	160396	Decal, V-Belt Sch.
15	145005	Decal, Caution, Battery
--	138311	Decal, Handle Lft Height Adj.
--	440600	Manual, Operator's (E&S)
--	440601	Manual, Parts (English)

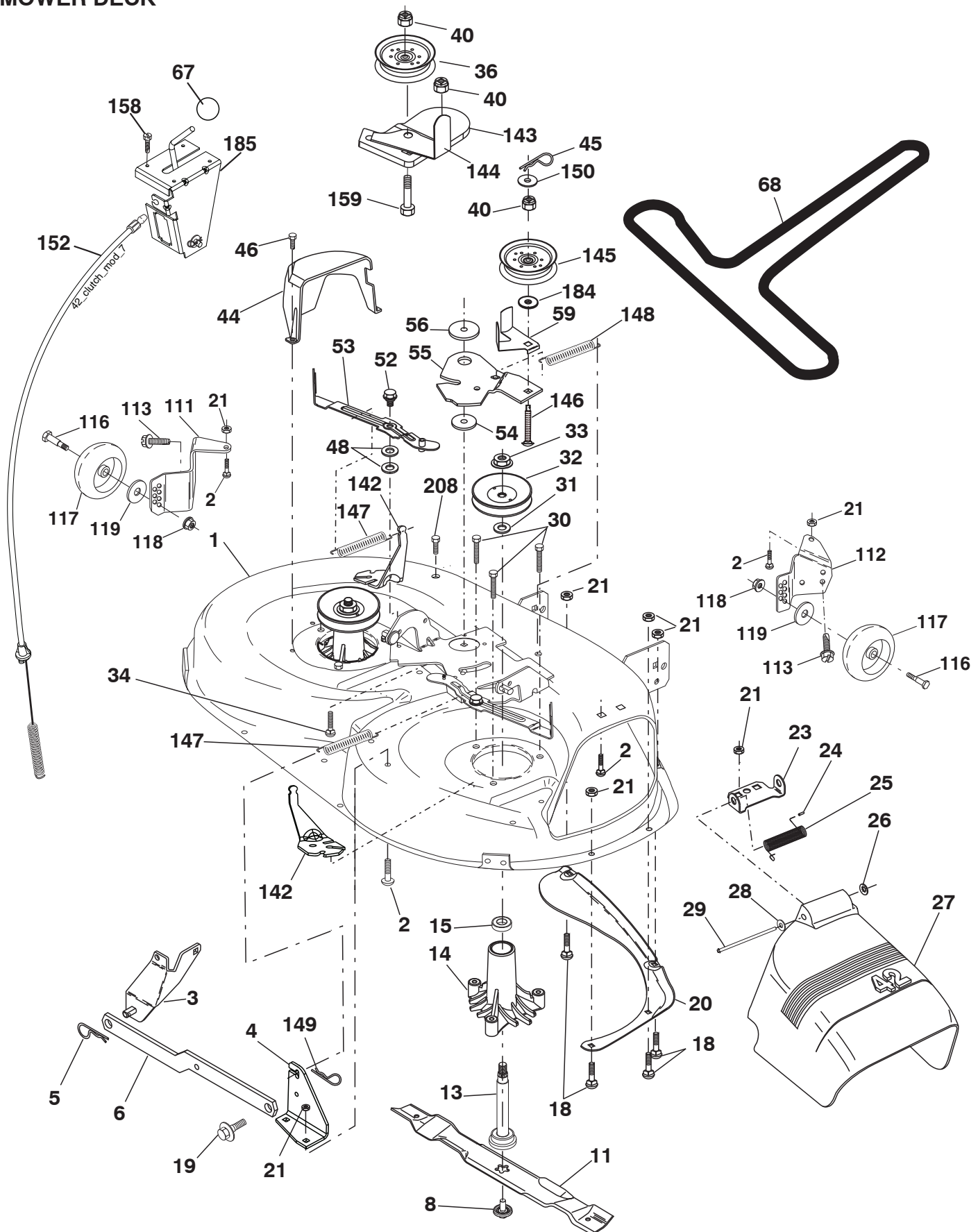
WHEELS & TIRES



KEY NO.	PART NO.	DESCRIPTION
1	59192	Cap, Tire Valve
2	65139	Stem, Valve
3	106222X	Tire, Front
4	59904	Tube, Front (Service item only)
5	106732X624	Rim Assembly, 6" Front
6	278H	Fitting, Grease (Front wheel only)
7	9040H	Bearing, Flange (Front wheel only)
8	106108X624	Rim Assembly, 8" Rear
9	138468	Tire, Rear
10	7152J	Tube, Rear (Service item only)
11	104757X428	Cap, Hub Axle
--	144334	Sealant, Tire (10 oz. Tube)

NOTE: All component dimensions given in U.S. inches
1 inch = 25.4 mm

TRACTOR - MODEL NUMBER SO17542LT (96012011800), PRODUCT NO. 960 12 01-18
MOWER DECK



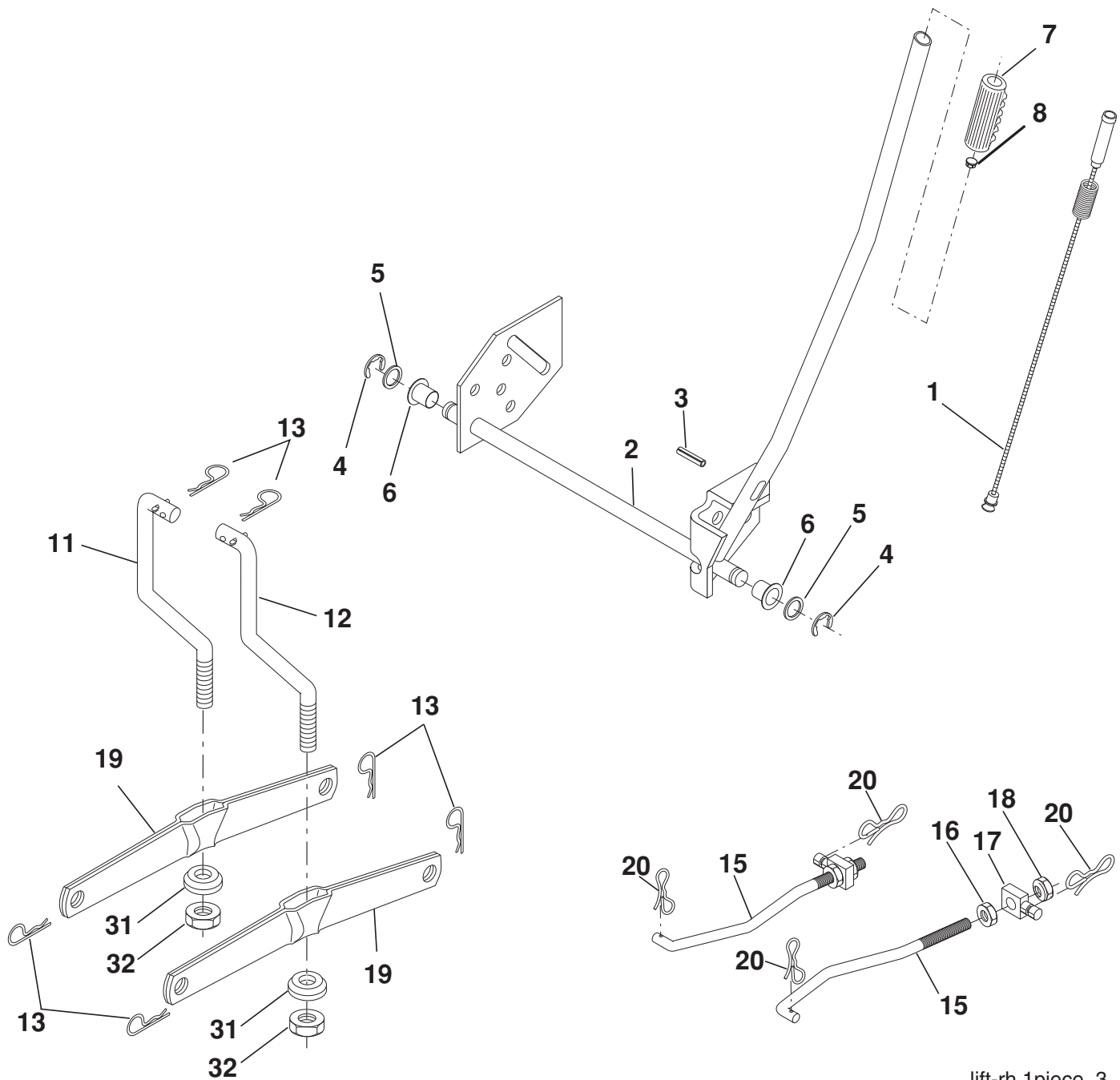
42_deck_std_2

TRACTOR - MODEL NUMBER SO17542LT (96012011800), PRODUCT NO. 960 12 01-18 MOWER DECK

KEY NO.	PART NO.	DESCRIPTION	KEY NO.	PART NO.	DESCRIPTION
1	165892	Mower Deck Assembly, 42"	48	133944	Washer, Hardened
2	72140506	Bolt	52	139888	Bolt, Shoulder 5/16-18 unc
3	138017	Bracket Asm Fr. Sway Bar 3/42	53	184907	Arm Assembly, Pad, Brake
4	165460	Bracket Asm Deck 42" Sway Bar	54	178515	Washer, Hardened
5	4939M	Retainer Spring	55	155046	Arm, Idler
6	178024	Bar Sway Deck	56	165723	Spacer, Retainer
8	193003	Bolt/Washer Asm. 7/16	59	141043	Guard TUV Idler
		(The following blades are available)	67	106932X	Knob Round
11	138971	Blade Mower 42" Hi-Lift (for bagging and discharging)	68	144959	V-Belt, 42" Mower
--	134149	Blade, Mulching 42" Std (for mulching mowers only)	111	404784	Bracket Wheel Gauge LH
--	139775	Blade, Mulching 42" Prem. (for better wear when mulching)	112	404785	Bracket Wheel Gauge RH
--	424752	Blade 42SP" 3N1	113	17000510	Bolt 5/16-18 Hex. Whs. Hd. Lckserr.
--	422719	Blade 42SP" 3N1Premium	116	4898H	Bolt Shld. "A" 2.41- "B" 1.66
13	192872	Shaft Asm Mandrel	117	188606	Wheel Gage Half Spoked
14	187281	Housing Mandrel	118	73900600	Nut Centerlock 3/8-16 unc
15	110485X	Bearing, Ball, Mandrel	119	19121414	Washer 3/8 x 7/8 x 14 Ga.
18	72140505	Bolt, Carriage 5/16-18 x 5/8	142	195784	Anchor Spring Brake Mower
19	132827	Bolt, Shoulder	143	157109	Bracket Arm Idler 42"
20	159770	Baffle, Vortex	144	158634	Keeper Belt 42" Clutch Cable
21	73680500	Nut	145	165888	Pulley Idler Flat
23	177563	Bracket, Deflector Mower 42"	146	171977	Bolt Carriage Idler
24	105304X	Cap, Sleeve 80 x 112 Blk Mower	147	131335	Spring Extension
25	123713X	Spring, Torsion, Deflector 2 52	148	169022	Spring Return Idler
26	110452X	Nut, Push Phos & Oil	149	165898	Retainer Spring Yellow
27	130968X428	Shield, Deflector 42" Blk	150	19091210	Washer 9/32 x 3/4 x 10 Ga.
28	19111016	Washer 11/32 x 5/8 x 16 Ga.	152	169676	Clutch Cable 42"
29	131491	Rod, Hinge 42" 6 75 W/G	158	17720408	Screw Hex Thd Cut 1/4-20 x 1/2
30	173984	Screw Thdrol	159	72140614	Bolt Rdhd Sqn 3/8-16 unc x 1-3/4
31	187690	Washer, Spacer Mower Vented	184	19131410	Washer 13/32 x 7/8 x 10 Ga.
32	153535	Pulley, Mandrel	185	188234	Head Asm Cable Clutch
33	400234	Nut, Toplock	208	17670608	Screw 3/8-16 x 1/2
34	72110612	Bolt Carr SH 3/8-16 x 1-1/2 Gr. 5	--	192870	Mandrel Assembly (Includes housing, shaft assembly, and bearing only - pulley/nut/washer and blade bolt/ washers not included)
36	131494	Pulley, Idler, Flat	--	405982	Replacement Mower, Complete
40	73900600	Nut Lock 3/8-16			
44	140088	Guard, Mandrel, LH			
45	4497H	Retainer			
46	137729	Screw, Thdrol 1/4-20 x 5/8 T			

NOTE: All component dimensions given in U.S. inches
1 inch = 25.4 mm

TRACTOR - MODEL NUMBER SO17542LT (96012011800), PRODUCT NO. 960 12 01-18
MOWER LIFT



lift-rh.1piece_3

KEY NO.	PART NO.	DESCRIPTION
1	404981	Plunger Asm Lift Lever
2	159471	Shaft Asm Lift RH
3	105767X	Pin Groove 1 500 Zinc
4	12000002	E Ring #5133-62
5	19211621	Washer 21/32 x 1 x 21 Ga.
6	120183X	Bearing Nylon Blk 629 Id
7	109413X	Grip Handle
8	124526X	Button Plunger
11	139865	Link Lift LH Fixed Length
12	139866	Link Lift RH Fixed Length
13	4939M	Retainer Spring

KEY NO.	PART NO.	DESCRIPTION
15	173288	Link Front
16	73350800	Nut Jam Hex 1/2-13 unc
17	175689	Trunnion
18	73800800	Nut Lockw/Wsh 1/2-13 unc
19	139868	Arm Suspension Rear
20	194209	Pin Cotter 7/16 Bow Tie Lock
31	169865	Bearing Pvt Lift
32	73540600	Nut Crownlock 3/8-24

NOTE: All component dimensions given in U.S. inches
 1 inch = 25.4 mm.

SERVICE NOTES

LIMITED WARRANTY

The Manufacturer warrants to the original consumer purchaser that this product as manufactured is free from defects in materials and workmanship. For a period of two (2) years from date of purchase by the original consumer purchaser, we will repair or replace, at our option, without charge for parts or labor incurred in replacing parts, any part which we find to be defective due to materials or workmanship. This Warranty is subject to the following limitations and exclusions.

1. This warranty does not apply to the engine, transaxle/transmission components, battery (except as noted below) or components parts thereof. Please refer to the applicable manufacturer's warranty on these items.
2. Transportation charges for the movement of any power equipment unit or attachment are the responsibility of the purchaser. Transportation charges for any parts submitted for replacement under this warranty must be paid by the purchaser unless such return is requested by the manufacturer.
3. Battery Warranty: On products equipped with a Battery, we will replace, without charge to you, any battery which we find to be defective in manufacture, during the first ninety (90) days of ownership. After ninety (90) days, we will exchange the Battery, charging you 1/12 of the price of a new Battery for each full month from the date of the original sale. Battery must be maintained in accordance with the instructions furnished.
4. The Warranty period for any products used for rental or commercial purposes is limited to 90 days from the date of original purchase.
5. This Warranty applies only to products which have been properly assembled, adjusted, operated, and maintained in accordance with the instructions furnished. This Warranty does not apply to any product which has been subjected to alteration, misuse, abuse, improper assembly or installation, delivery damage, or to normal wear of the product.
6. Exclusions: Excluded from this Warranty are belts, blades, blade adapters, normal wear, normal adjustments, standard hardware and normal maintenance.
7. In the event you have a claim under this Warranty, you must return the product to an authorized service dealer.

Should you have any unanswered questions concerning this Warranty, please contact:

HOP
Outdoor Products Customer Service Dept.
9335 Harris Corners Parkway
Charlotte, NC 28269 USA

In Canada contact:
HOP
5855 Terry Fox Way
Mississauga, Ontario
L5V 3E4

giving the model number, serial number and date of purchase of your product and the name and address of the authorized dealer from whom it was purchased.

THIS WARRANTY DOES NOT APPLY TO INCIDENTAL OR CONSEQUENTIAL DAMAGES AND ANY IMPLIED WARRANTIES ARE LIMITED TO THE SAME TIME PERIODS STATED HEREIN FOR OUR EXPRESSED WARRANTIES. Some areas do not allow the limitation of consequential damages or limitations of how long an implied Warranty may last, so the above limitations or exclusions may not apply to you. This Warranty gives you specific legal rights, and you may have other rights which vary from locale to locale.

This is a limited Warranty within the meaning of that term as defined in the Magnuson-Moss Act of 1975.