

**Owner's Manual**  
**30" RIDING MOWER**  
**SIDE DISCHARGE**  
**ELECTRIC START**

**BAGGER = 960730028**

# **WEED EATER®**



**Catalog No.**  
**WELRVBA30**

**IMPORTANT:**

Read and follow all Safety Rules and Instructions before operating this equipment.

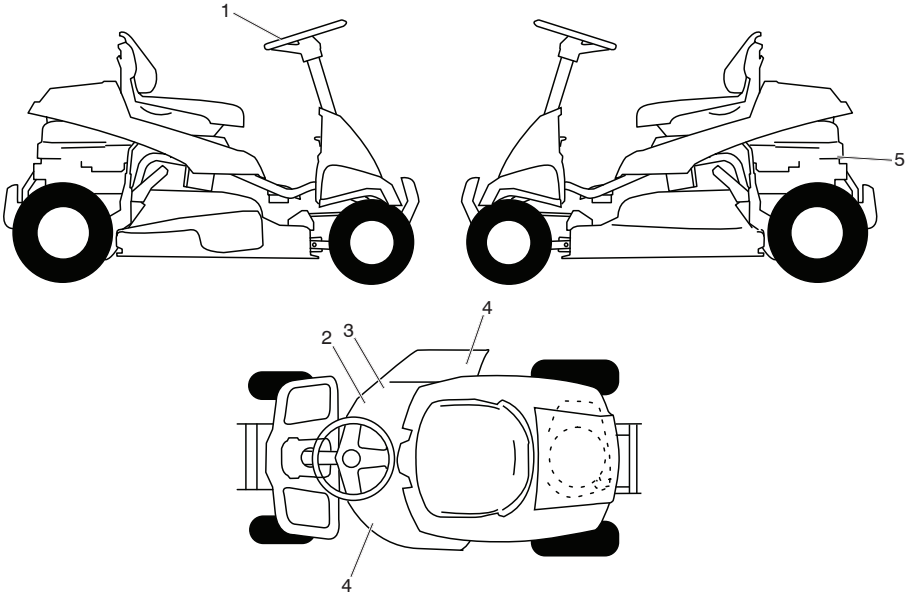
Patents Pending

Gasoline containing up to 10% ethanol (E10) is acceptable for use in this machine. The use of any gasoline exceeding 10% ethanol (E10) will void the product warranty.

**532 44 19-83 Rev. 4**

**RIDING MOWER**  
**DECALS**

**MODEL NUMBER WELRVBA (96026000100)**  
**PRODUCT NUMBER 960 26 00-01**



KEY NO.	PART NO.	DESCRIPTION
1	532 44 18-21	DECAL, STEERING WHEEL
2	532 44 14-97	DECAL, V-BELT SCH 30"
3	532 42 51-12	DECAL, WARN. DEFLECT/CTFGR
4	532 44 07-80	DECAL, DECK/DEFLECTOR
5	532 40 88-06	DECAL, ENGINE
--	532 44 19-83	MANUAL OWNER'S ENGLISH
--	532 44 19-84	MANUAL OWNER'S SPANISH

**NOTE:** All component dimensions given in U.S. inches  
1 inch = 25.4 mm

**RIDING MOWER**  
**MOWER DECK**

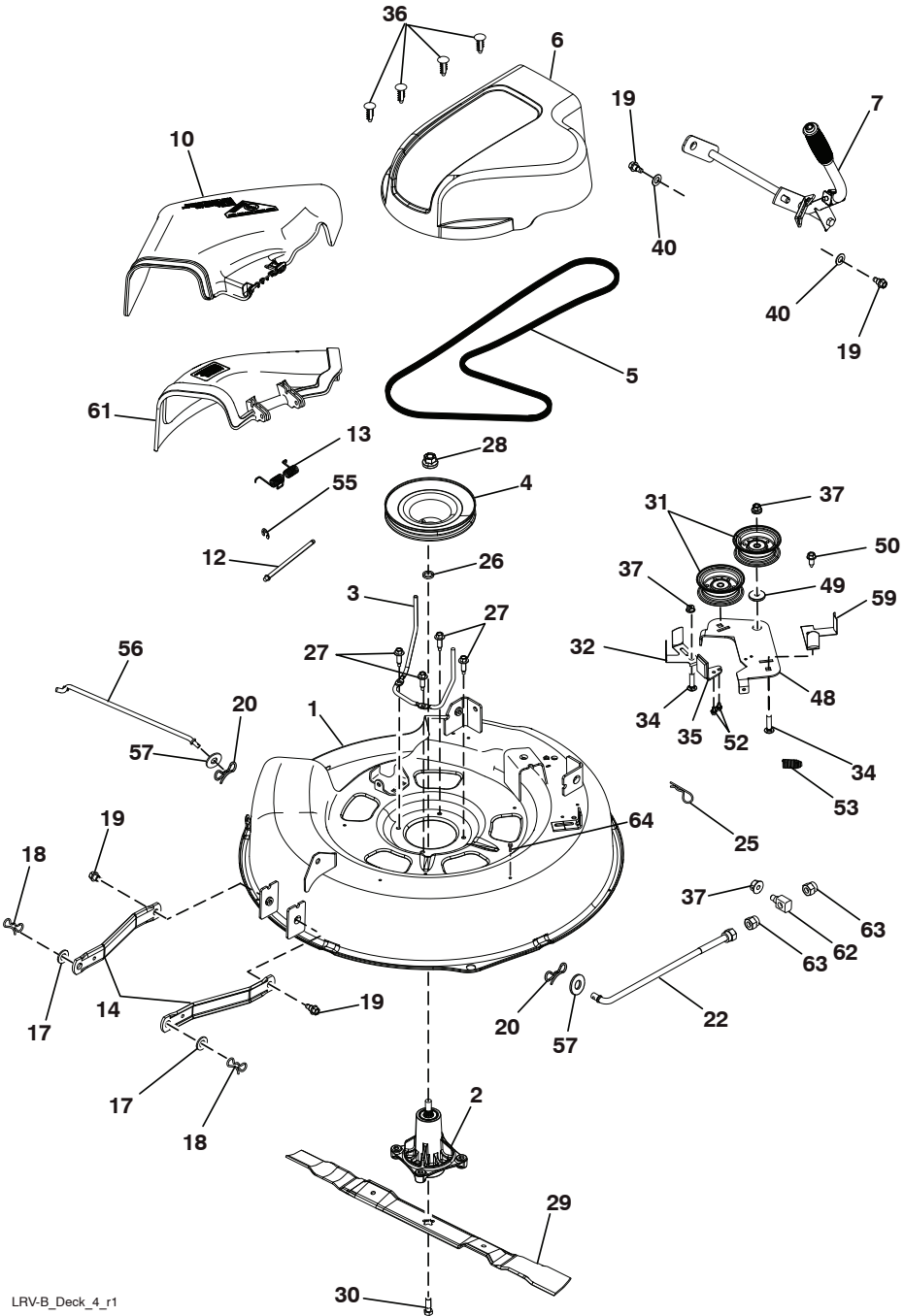
**MODEL NUMBER WELRVBA (96026000100)**  
**PRODUCT NUMBER 960 26 00-01**

<b>KEY NO.</b>	<b>PART NO.</b>	<b>DESCRIPTION</b>
1	532 43 68-48	DECK
2	532 19 28-70	MANDREL ASM
3	532 43 68-56	KEEPER, BELT
4	532 43 68-55	PULLEY, MANDREL
5	532 44 15-97	BELT
6	532 43 68-63	COVER, MANDREL
7	532 43 71-44	LIFT ASM, DECK
10	532 43 96-38	DEFLECTOR
12	532 43 66-47	PIN, HINGE
13	532 43 74-62	SPRING, TORSION
14	532 19 51-85	ARM, MOWER SUPPORT
17	819 19 19-12	WASHER
18	532 19 42-09	PIN
19	532 19 65-39	BOLT, SHOULDER
20	532 19 42-08	PIN COTTER 5/16 BOW TIE LOCK
22	532 44 15-98	LINK ASM DECK
25	532 12 47-88	RETAINER SPRING 1"
26	532 18 76-90	SPACER, MANDREL
27	532 17 39-84	BOLT, MANDREL
28	532 40 02-34	NUT FLANGE LOCK TOP
29	532 41 92-73	BLADE
30	532 19 30-03	BOLT, BLADE
31	532 19 31-97	PULLEY, IDLER
32	532 14 10-43	GUARD, IDLER TUV
34	872 11 06-12	BOLT, 3/8-16 X 1 1/2
35	532 19 94-70	ARM, BRAKE
36	532 13 77-29	SCREW THD ROLL 1/4-20 X 5/8
37	873 90 06-00	NUT, 3/8-16 FLANGE
40	819 17 16-16	WASHER, 16 GA.
48	532 43 68-57	ARM CLUTCHING
49	532 19 90-92	SPACER RETAINER
50	817 00 06-16	SCREW 3/8-16 X 1
52	817 60 04-06	SCREW 1/4-20 X 3/8
53	532 40 18-72	SPRING RETURN DECK
55	532 43 79-88	E-RING 5/16
56	532 43 68-62	ROD ANTI-SWAY
57	819 13 13-12	WASHER 13/32 X 13/16 X 12 GA
59	532 43 68-58	GUARD TUV IDLER
61	532 43 79-47	MULCH COVER ASM
62	532 17 62-05	TRUNION SUSPENSION ARM
63	532 17 59-94	NUT LIFT LINK 7/16-20
64	817 67 06-08	SCREW THDROL 3/8-16 X 1/2

**NOTE:** All component dimensions given in U.S. inches  
1 inch = 25.4 mm

**RIDING MOWER**  
**MOWER DECK**

**MODEL NUMBER WELRVBA (96026000100)**  
**PRODUCT NUMBER 960 26 00-01**



**RIDING MOWER  
STEERING**

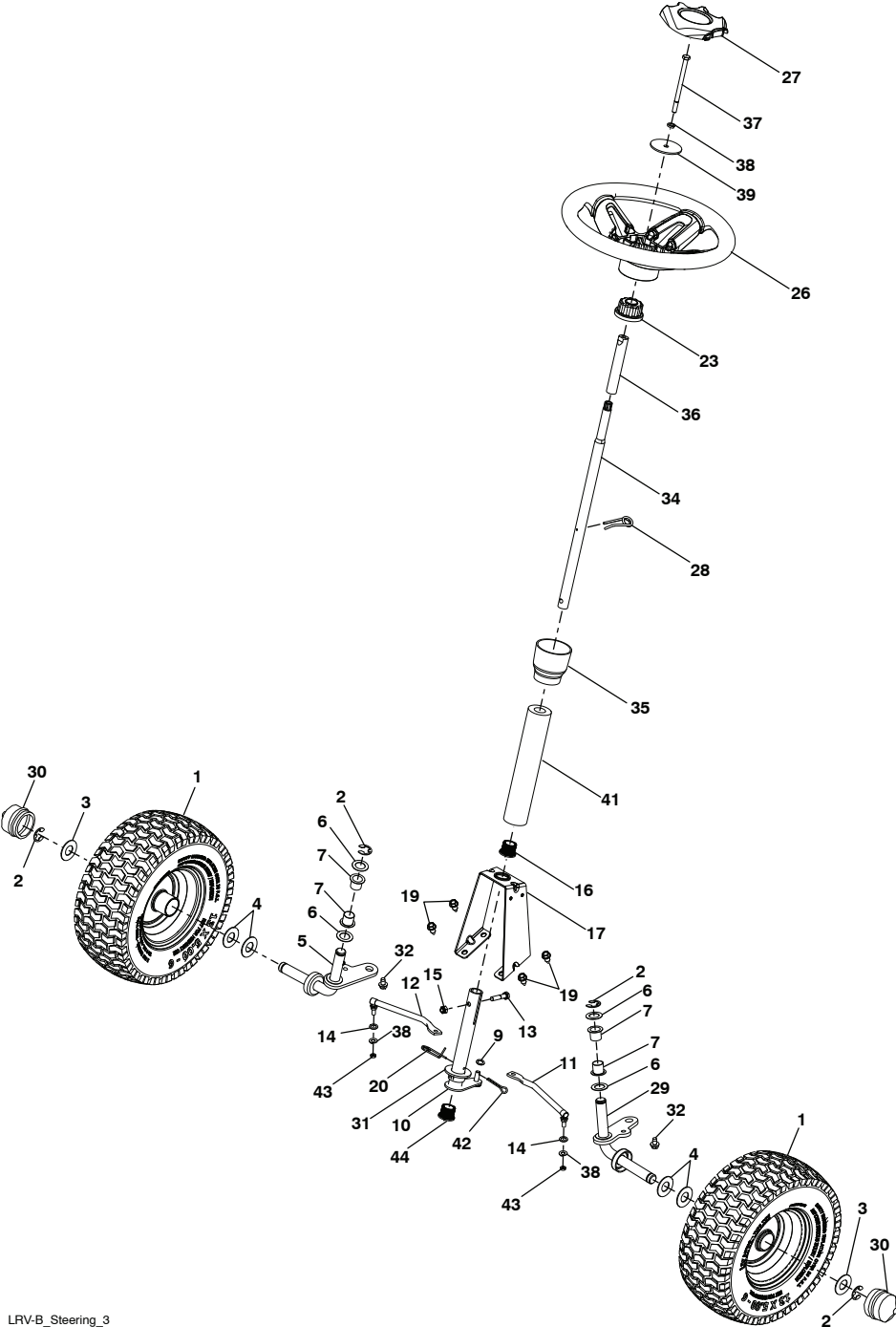
**MODEL NUMBER WELRVBA (96026000100)  
PRODUCT NUMBER 960 26 00-01**

<b>KEY NO.</b>	<b>PART NO.</b>	<b>DESCRIPTION</b>
1	532 44 21-39	WHEEL TUBE
2	812 00 00-01	E-CLIP
3	532 18 89-67	WASHER, HARDENED
4	532 12 17-49	WASHER, 1/4 X 3/4
5	532 43 61-81	SPINDLE, RH
6	532 12 49-31	WASHER, HARDENED THRUST
7	532 12 49-37	BUSHING, STEERING COLUMN
9	819 13 14-14	WASHER
10	532 42 80-57	WELDMENT, LWR STRG SHAFT
11	532 44 21-39	LINK, STRNG LH
12	532 43 61-84	LINK, STRNG RH
13	874 78 05-24	BOLT, 5/16-18 X 1 1/2
14	819 11 12-16	WASHER 11/32 X 3/4 X 16 GA
15	873 80 05-00	NUT, 5/16-18
16	532 43 62-82	BUSHING SNAP
17	532 43 61-78	SUPPORT, UPPER STEERING
19	817 00 05-12	BOLT, 5/16-18 X 3/4
20	532 42 80-45	CLIP, RETAINER SPRING
23	532 43 77-47	ADAPTER, STEERING WHEEL
26	532 44 21-40	WHEEL, STEERING
27	532 44 21-41	CAP, STEERING WHEEL
28	532 19 98-49	CLIP, RETAINER SPRING
29	532 43 61-80	SPINDLE, LH
30	532 43 64-99	CAP, HUB, AXLE
31	819 34 32-10	WASHER 1-1/16 X 2 X 10GA.
32	817 58 05-20	SCREW HEXWSH THD 5/16-18 X 1-3/4
34	532 43 61-82	SHAFT STEERING UPPER
35	532 44 20-66	BOOT LOWER STEERING WHEEL
36	532 19 60-75	SHAFT EXTENSION STEERING SPLINE
37	874 78 05-80	BOLT FIN HEX 5/16-18 UNC X 5 GR5
38	810 04 05-00	WASHER LOCK HVY HLCL SPR 5/16
39	819 11 38-12	WASHER 11/32 ID X 2 3/8 OD X 12 GA.
41	532 43 65-90	FOAM SHAFT STEERING
42	532 42 10-76	PIN, 5/64 X 3/4 COTTER
43	873 54 05-00	CROWNLOCK NUT 5/16-24 UNF
44	532 42 80-44	BUSHING

**NOTE:** All component dimensions given in U.S. inches  
1 inch = 25.4 mm

**RIDING MOWER  
STEERING**

**MODEL NUMBER WELRVBA (96026000100)  
PRODUCT NUMBER 960 26 00-01**



**RIDING MOWER  
DRIVE**

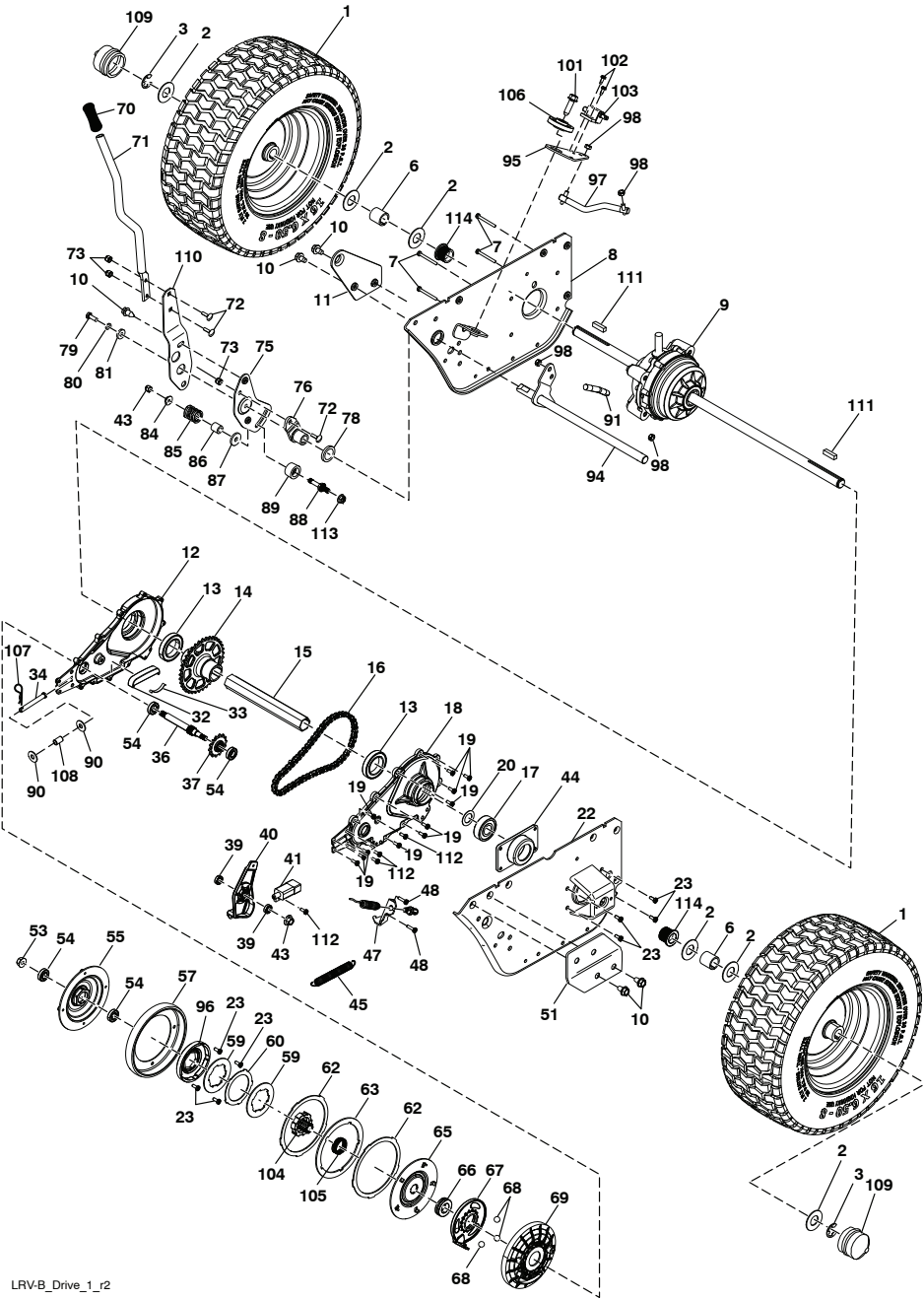
**MODEL NUMBER WELRVBA (96026000100)  
PRODUCT NUMBER 960 26 00-01**

KEY NO.	PART NO.	DESCRIPTION	KEY NO.	PART NO.	DESCRIPTION
1	532 44 21-38	WHEEL ASM (REAR)	69	532 43 57-27	COVER CLUTCH
2	532 12 17-48	WASHER, 16 GA.	70	532 41 15-55	GRIP LEVER
3	812 00 00-01	E-CLIP	71	532 43 68-65	TUBE SHIFT LRV
6	532 15 69-72	SPACER AXLE	72	872 11 04-06	BOLT CARR.
7	874 78 04-28	HCS 1/4-20 X 1-3/4 GR 5 ZD	73	873 68 04-00	NUT CROWN LOCK 1/4 - 20 UNC
8	532 44 18-51	WELMENT SUPPORT AXLERH	75	532 43 67-58	BRACKET MOUNT SHIFT
9	532 44 19-36	SUBASM FINAL DRIVE	76	532 18 39-00	HUB SHIFT
10	817 00 05-12	SCREW 5/16 - 18 X 3/4	78	532 42 90-55	SPACER NYLON .866 X 1.25 X .250
11	532 43 67-41	BRACKET.SUPPORT.RH	79	874 78 04-12	BOLT.FIN.HEX.1/4-20 UNC X .75
12	532 43 61-48	CASE CHAIN RH	80	810 04 04-00	WASHER LOCK HVY HLCL SPRING
13	532 43 72-80	BEARING BALL 6207-SRS	81	819 09 12-10	WASHER 9/32 X 3/4 X 10 GA.
14	532 43 71-76	SPROCKET DRIVEN 37 TOOTH	84	819 11 16-10	WASHER 11/32 X 1.00 X 10 GA.
15	532 44 25-51	TUBE INPUT HEX	85	532 43 69-14	SPRING FRICTION PACK
16	532 43 61-53	CHAIN PRIMARY DRIVE	86	532 43 73-04	BUSHING PACK FRICTION FD2
17	532 43 72-82	BEARING BALL 6204-3-2RS	87	532 43 69-48	WASHER PLASTIC
18	532 43 61-49	CASE CHAIN LH	88	532 43 67-01	STUD PACK FRICTION
19	818 05 10-10	SCREW 10 - 24 X 5/8 PAN HEAD TORX	89	532 43 72-99	SPACER PACK FRICTION FD2
20	532 12 49-31	WASHER THRUST .75 X 1.230	90	819 11 14-16	WASHER.11/32 X 7/8 X 16 GA.
22	532 43 66-96	WELMENT SUPPORT AXLE LH	91	532 43 69-24	SUBASM.LINK.SHIFT
23	818 10 10-08	SCREW TORX #10 - 14 X 1/2	94	532 43 69-18	WELDMENT.SHIFT.FD2
32	532 43 61-51	BLOCK TENSION CHAIN	95	532 43 68-66	PLATE.SHIFT
33	532 43 61-50	SPRING ADJUSTER TENSION	96	532 43 77-67	DRUM CLUTCH MULTI DISC
34	877 10 10-40	PIN CLEVIS 5/16 X 2-1/2	97	532 43 69-25	SUBASM LINK SHIFT PRIMARY
36	532 43 57-22	SHAFT INPUT CLUTCH	98	532 15 03-60	NUT LOCK CENTER 1/4 - 28 FNTHD
37	532 43 61-52	SPROCKETS PLINED 14 TOOTH	101	817 06 06-24	SCREW.3/8-16X1-1/2. SMGML. TAP/R
39	532 43 04-70	BEARING BALL	102	532 08 67-77	THREAD.CUTTER
40	532 43 69-39	ARM BRAKE	103	532 10 98-69	SWITCH.SEAT.
41	532 10 95-53	SWITCH INTLK CL MWR GRY 4 TERM	104	532 43 77-81	HUB CENTER
43	873 80 05-00	NUT LOCK HEX W/INSERT 5/16 - 18 UNC	105	532 43 61-42	SPRING WAVE C125-H5
44	532 43 66-52	COVER END HEX	106	532 19 43-21	SPACER RETAINER
45	532 43 61-54	SPRING DRIVE	107	532 12 47-88	PIN COTTER
47	532 43 69-49	BRACKET MOUNT CABLE LRV B	108	532 43 67-84	BUSHING.5/16ID X 7/16OD X 1/2
48	817 54 10-16	SCREW.HEX.HEAD WASH.10-24X1.00	109	532 43 64-99	CAP.HUB.AXLE.1.50 X 1.00. MS613
51	532 43 67-39	BRACKET SUPPORT LH	110	532 42 84-61	BRACKET SHIFTER FLEX
53	873 90 06-00	LOCK NUT, FLANGED	111	532 12 35-83	KEY.SQUARE.2.0X.1845/.1865
54	532 43 57-26	BEARING BALL	112	818 10 10-12	SCREW TORX #10-14 X .750
55	532 43 77-77	COVER WHEEL CLUTCH	113	873 90 05-00	NUT LOCK HEX FLANGE 5/16-18
57	532 43 65-59	WHEEL FRICTION	114	532 43 62-82	FLANGED BEARING
59	532 44 10-97	PLATE.CLUTCH.DRIVE			
60	532 43 77-87	PLATE PRESSURE DRIVE			
62	532 43 77-86	PLATE CLUTCH BRAKE			
63	532 43 77-85	PLATE PRESSURE BRAKE			
65	532 43 57-23	PLATE PRESSURE MASTER			
66	532 43 57-24	BEARING THRUST 20MM			
67	532 43 57-25	PLATE THROWOUT			
68	532 43 57-28	BEARING BALL LOOSE			

**NOTE:** All component dimensions given in U.S. inches  
1 inch = 25.4 mm

**RIDING MOWER  
DRIVE**

**MODEL NUMBER WELRVBA (96026000100)  
PRODUCT NUMBER 960 26 00-01**



LRV-B\_Drive\_1\_r2



# **RIDING MOWER**

## **CHASSIS**

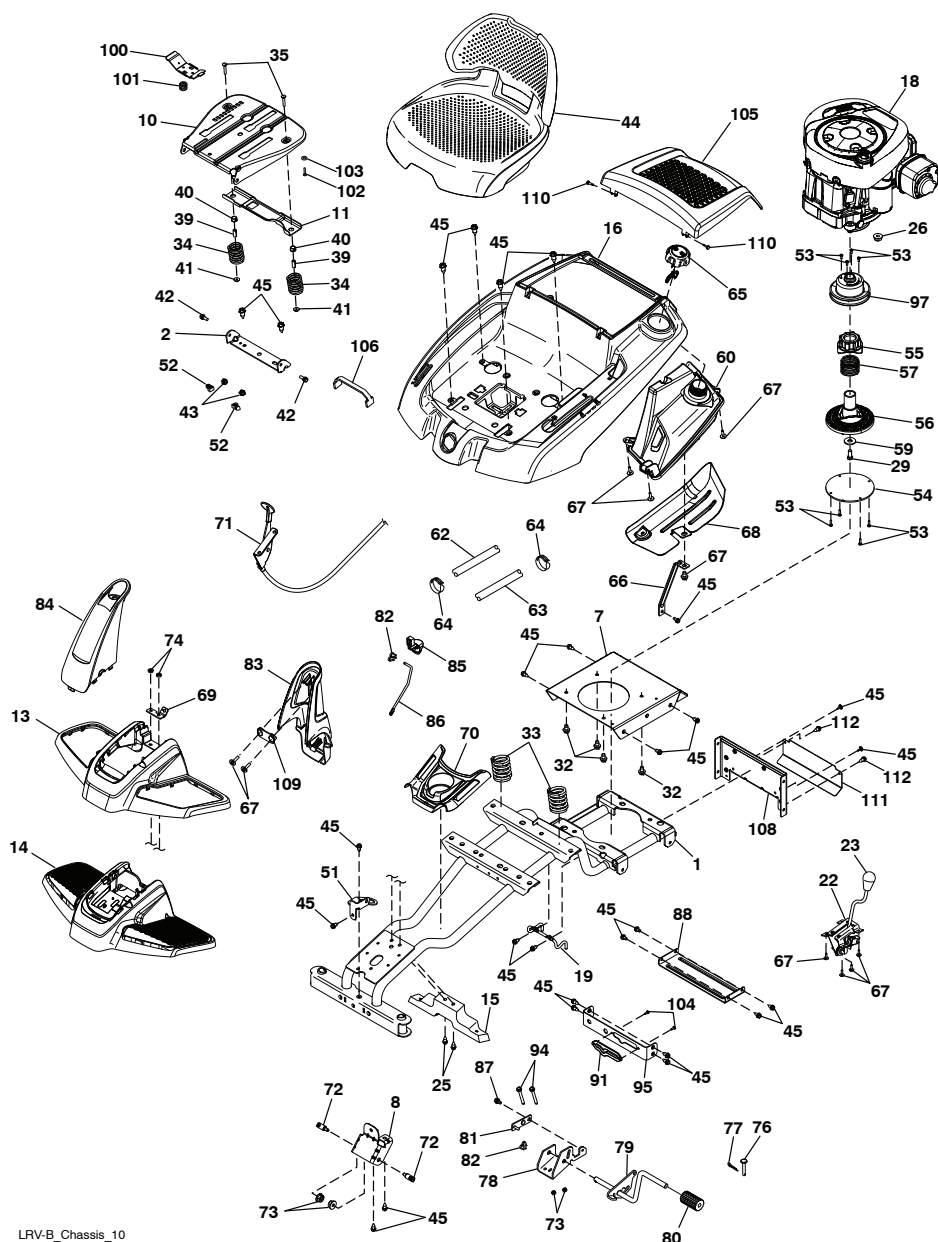
**MODEL NUMBER WELRVBA (96026000100)**  
**PRODUCT NUMBER 960 26 00-01**

<b>KEY NO.</b>	<b>PART NO.</b>	<b>DESCRIPTION</b>	<b>KEY NO.</b>	<b>PART NO.</b>	<b>DESCRIPTION</b>
1	532 43 61-76	WELDMENT, CHASSIS	66	532 43 66-06	FUEL TANK SUPPORT BRKT
2	532 18 01-66	BRACKET, SEAT	67	532 42 17-56	SCREW #10 X 0.500
7	532 43 61-77	PLATE, ENGINE	68	532 43 98-51	SHIELD HEAT
8	532 43 68-60	BRACKET, CHASSIS FRONT	69	532 43 74-27	BRACKET MOUNT CABLE
10	532 44 18-05	PAN, SEAT	70	532 44 20-68	CONSOLE CENTER
11	532 19 93-70	BRACKET, SWITCHMOUNTING			CUPHOLDER
13	532 43 65-95	COVER, FOOT REST	71	532 43 78-57	THROTTLE ASM
14	532 43 65-92	STRUCTURE, FOOT REST	72	532 19 51-61	STUD FASTNER
15	532 44 20-69	SUPPORT, FOOT REST	73	873 90 05-00	NUT LOCK HEX FLANGE 5/16-18
16	532 43 93-94	PANEL ASM, CONTROL			PIN CLEVIS
18	532 43 92-73	ENGINE, (NON-CALIFORNIA) 215807-1529-G1	76	877 10 08-12	PIN COTTER 1/16 X 1/2
19	532 43 68-61	KEEPER, BELT	77	876 02 02-08	BRACKET SUPPORT ROD
22	532 44 21-30	DECK CLUTCH ASM	78	532 43 70-56	BRACKET WELDMENT
23	532 14 98-46	KNOB	79	532 43 70-57	BRAKE PEDAL COVER
25	872 14 04-24	BOLT	80	532 42 96-93	WELDMENTLINKCONNECTING
26	873 51 04-00	NUT, 1/4-20	81	532 43 73-74	RETAINER CLIP
29	532 43 89-21	BOLT, 7/16-20 X 1.00	82	532 16 94-84	STEERING BOOT REAR
32	817 06 06-20	SCREW 3/8-16 X 1-1/4	83	532 43 93-68	STEERING BOOT FRONT
33	532 12 41-81	SPRING, SEAT	84	532 43 92-91	PARKING BRAKE HANDLE
34	532 12 37-40	SPRING	85	532 43 76-60	ACTUATOR PARKING BRAKE
35	872 05 04-12	BOLT, 1/4-20 X 1 1/2	86	532 43 87-62	SHOULDER BOLT
39	532 13 43-00	SPACER	87	532 16 54-92	CROSS BRACE
40	532 12 12-48	BUSHING, NYLON SNAP	88	532 42 81-10	TRACK CLUTCH BRKT
41	532 12 39-76	NUT, LOCK	91	532 43 74-01	BOLT
42	532 17 18-52	BOLT, 5/16-18 SHOULDER	94	874 49 05-48	BRACKET
43	873 80 05-00	NUT, 5/16-18	95	532 43 67-02	PULLEY ENGINE
44	532 43 66-12	SEAT	97	532 43 64-72	SCREW 1/4-20 X 1/2
45	817 00 05-12	BOLT, 5/16-18 X 3/4	98	817 49 04-08	SCREW #10-14 X 1/2
51	532 42 88-56	BRACKET	104	818 10 10-08	ENGINE COVER
52	532 14 50-06	CLIP PUSH-IN HINGED	105	532 44 21-34	STRAP BATTERY
53	532 43 85-62	SCREW	106	532 43 68-34	COVER REAR TRANSAXLE
54	532 43 64-73	DISC FRICTION	108	532 43 71-68	RETAINER BRAKE
55	532 43 58-08	TORSION BODY UPPER	109	532 43 90-08	CONTROL HINGE PIN
56	532 44 19-25	TORQUE ASM CONTROL LOWER	110	532 42 21-45	SHIELD, BRAKE CABLE
57	532 43 64-79	SPRING HELIX	111	532 43 81-71	SCREW THD CUT
59	819 18 24-11	WASHER 9/16ID X 1 1/2OD 11G ZIN	112	817 72 04-08	
60	532 43 78-56	FUEL TANK ASM			
62	532 40 04-14	FUEL LINE			
63	532 41 41-19	PURGE LINE			
64	532 12 34-87	CLAMP HOSE			
65	532 43 85-96	FUEL CAP			

**NOTE:** All component dimensions given in U.S. inches  
1 inch = 25.4 mm

**RIDING MOWER**  
**CHASSIS**

**MODEL NUMBER WELRVBA (96026000100)**  
**PRODUCT NUMBER 960 26 00-01**



LRV-B\_Chassis\_10

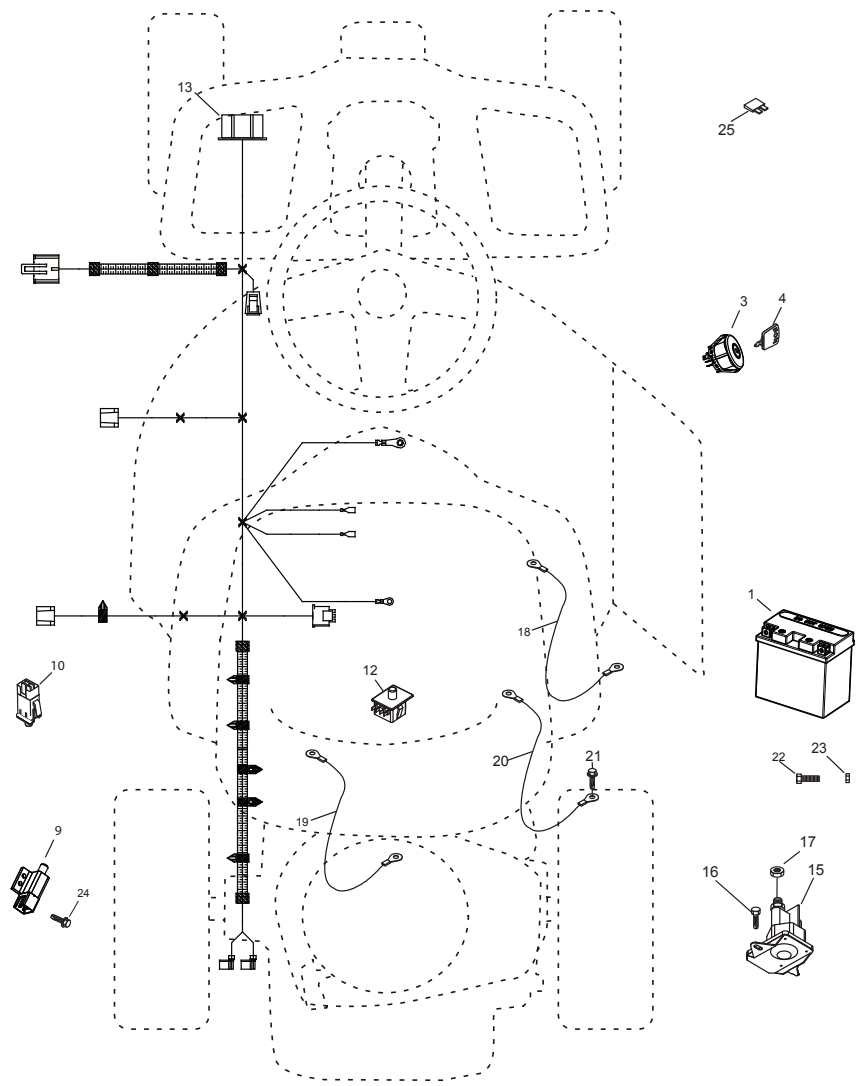
<b>KEY NO.</b>	<b>PART NO.</b>	<b>DESCRIPTION</b>
1	532 43 65-51	BATTERY
3	532 19 33-50	SWITCH, IGN, DLTA, P-IN, ROS
4	532 41 19-33	KEY/CHAIN
9	532 10 95-53	SWITCH, INTLK,CL, MWR, GRY
10	532 17 61-38	SWITCH, INTERLOCK, NONC,GRAY
12	532 19 27-49	SWITCH, SEAT, DP, ROS
13	532 43 72-28	HARNESS, IGN, ELECTSTART, LRV
15	532 19 25-07	SOLENOID
16	817 72 04-08	SCREW THD CUT 1/4-20 X 1/2 TY23
17	873 51 04-00	NUT KEPS HEX 1/4-20 UNC
18	532 41 66-94	CABLE BATTERY
19	532 42 12-99	CABLE STARTER
20	532 42 12-98	CABLE GROUND
21	817 06 05-12	SCREW 5/16-18 X 3/4
22	874 35 05-09	SCREW HEX M5X0.8.9MM
23	532 43 81-22	NUT M5
24	818 10 10-12	SCREW TORX #10-14 X .750
25	532 44 16-22	FUSE, 10

**NOTE:** All component dimensions given in U.S. inches  
1 inch = 25.4 mm

**RIDING MOWER**  
**ELECTRICAL**

**MODEL NUMBER WELRVBA (96026000100)**  
**PRODUCT NUMBER 960 26 00-01**

LRV2



RIDING MOWER  
SCHEMATIC

MODEL NUMBER WELRVBA (96026000100)  
PRODUCT NUMBER 960 26 00-01

SCH24

