

### LIMITED WARRANTY

The Manufacturer warrants to the original consumer purchaser that this product as manufactured is free from defects in materials and workmanship. For a period of two (2) years from date of purchase by the original consumer purchaser, we will repair or replace, at our option, without charge for parts or labor incurred in replacing parts, any part which we find to be defective due to materials or workmanship. This Warranty is subject to the following limitations and exclusions.

1. This warranty does not apply to the engine, transaxle/transmission components, battery (except as noted below) or components parts thereof. Please refer to the applicable manufacturer's warranty on these items.
2. Transportation charges for the movement of any power equipment unit or attachment are the responsibility of the purchaser. Transportation charges for any parts submitted for replacement under this warranty must be paid by the purchaser unless such return is requested by the manufacturer.
3. Battery Warranty: On products equipped with a Battery, we will replace, without charge to you, any battery which we find to be defective in manufacture, during the first ninety (90) days of ownership. After ninety (90) days, we will exchange the Battery, charging you 1/12 of the price of a new Battery for each full month from the date of the original sale. Battery must be maintained in accordance with the instructions furnished.
4. The Warranty period for any products used for rental or commercial purposes is limited to 45 days from the date of original purchase.
5. This Warranty applies only to products which have been properly assembled, adjusted, operated, and maintained in accordance with the instructions furnished. This Warranty does not apply to any product which has been subjected to alteration, misuse, abuse, improper assembly or installation, delivery damage, or to normal wear of the product.
6. Exclusions: Excluded from this Warranty are belts, blades, blade adapters, normal wear, normal adjustments, standard hardware and normal maintenance.
7. In the event you have a claim under this Warranty, you must return the product to an authorized service dealer.

Should you have any unanswered questions concerning this Warranty, contact:

Poulan  
Customer Service Department  
9335 Harris Corners Parkway  
Charlotte, NC 28269 USA

In Canada contact:  
Poulan  
Customer Service Department  
5855 Terry Fox Way  
Mississauga, Ontario L5V 3E4

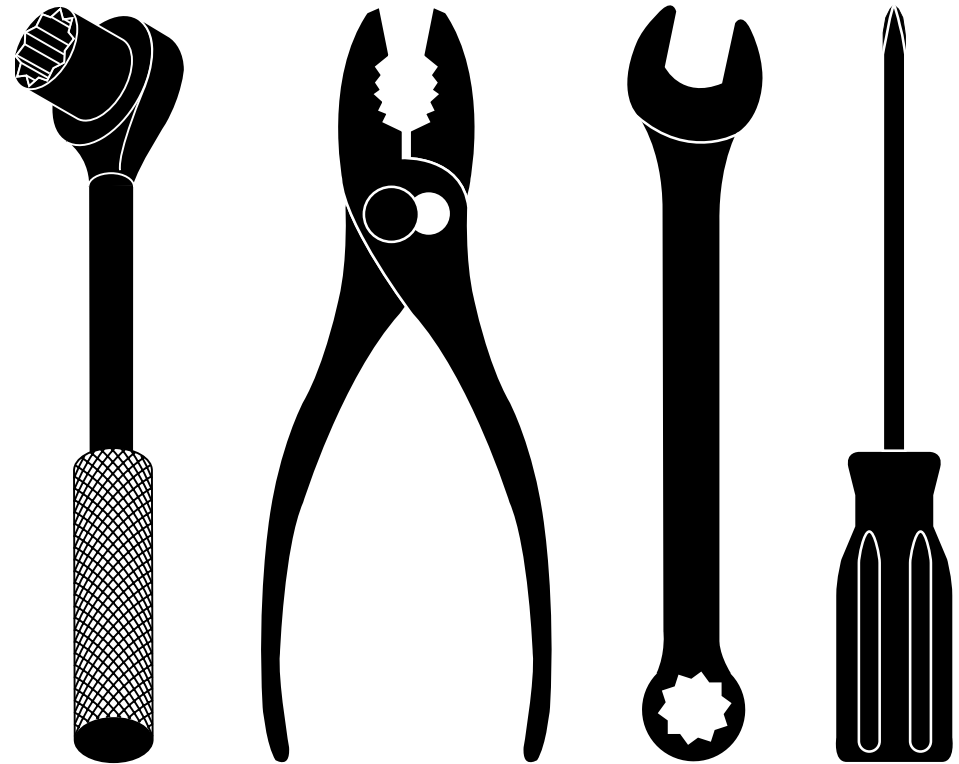
giving the model number, serial number and date of purchase of your product and the name and address of the authorized dealer from whom it was purchased.

**THIS WARRANTY DOES NOT APPLY TO INCIDENTAL OR CONSEQUENTIAL DAMAGES AND ANY IMPLIED WARRANTIES ARE LIMITED TO THE SAME TIME PERIODS STATED HEREIN FOR OUR EXPRESSED WARRANTIES.**

Some areas do not allow the limitation of consequential damages or limitations of how long an implied Warranty may last, so the above limitations or exclusions may not apply to you. This Warranty gives you specific legal rights, and you may have other rights which vary from locale to locale.

This is a limited Warranty within the meaning of that term as defined in the Magnuson-Moss Act of 1975.

# Poulan

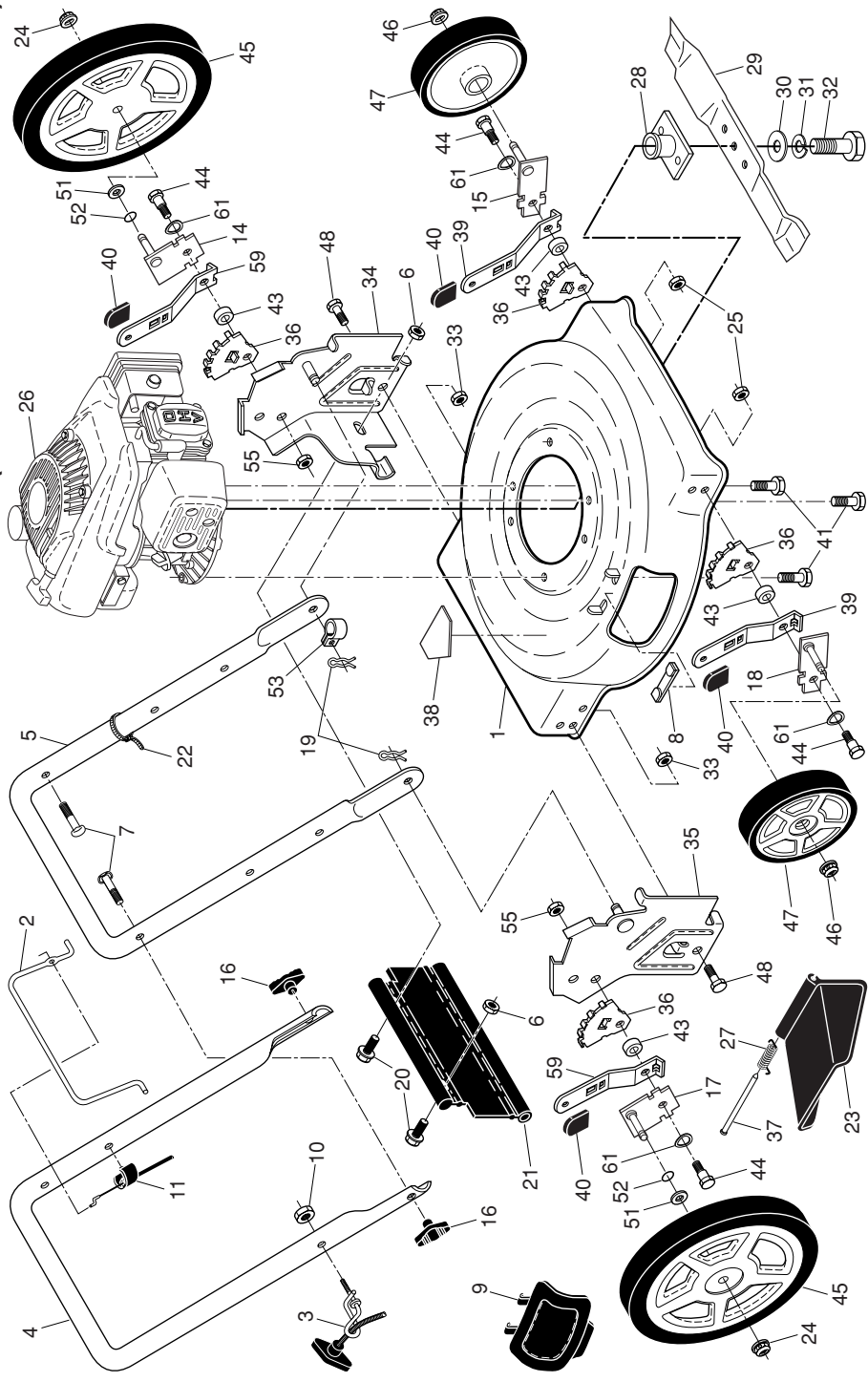


## REPAIR PARTS MANUAL MODEL NUMBER **PO550SH** MFG. ID. NO. **96112010600** **Rotary Lawn Mower**

For Parts and Service or Technical Assistance, call 1-800-661-6662

# Poulan

**POULAN ROTARY LAWN MOWER - MODEL NO. PO550SH (MFG. ID. NUMBER 96112010600)**



2

**POULAN ROTARY LAWN MOWER - MODEL NO. PO550SH (MFG. ID. NUMBER 96112010600)**

KEY NO.	PART NO.	DESCRIPTION	KEY NO.	PART NO.	DESCRIPTION	KEY NO.	PART NO.	DESCRIPTION
1	532 17 28-20	Lawn Mower Housing (Includes Key Number 38)	21	532 41 31-60	Rear Deflector	43	532 40 16-29	3/8-16 x 1 Spacer
2	532 44 15-82	Control Bar	22	532 06 64-26	Wire Tie	44	532 40 16-38	Shoulder Bolt 5/16-18
3	532 19 47-88	Rope Guide	23	532 16 08-31	Discharge Guard	45	532 44 04-87	Wheel & Tire Assembly, Rear, 12"
4	532 44 15-62	Upper Handle	24	532 40 91-49	Nut, Hex, Flangelock 3/8-16	46	532 40 91-48	Nut, Hex, Flangelock 3/8-16
5	532 43 45-14	Lower Handle	25	532 42 65-89	Nut, Hex, Flangelock 5/16-18	47	532 43 64-78	Wheel & Tire Assembly, Front, 7"
6	873 80 04-00	Locknut, Hex 1/4-20	26	532 43 66-77	Engine, Ratio, Model Number RV140-1-ED	48	874 76 05-14	Bolt, Hex Head 5/16-18
7	532 19 15-74	Handle Bolt 5/16-18	27	532 40 85-85	Torsion Spring	51	532 08 83-48	Washer, Flat 3/8
8	532 16 16-22	Clip, Closeout	28	532 42 00-97	Blade Adapter	52	532 19 74-80	O-Ring
9	532 16 08-30	Mulcher Plate	29	532 40 67-13	22" Blade	53	532 19 79-91	Clip, Cable
10	532 13 20-04	Nut, Hex 1/4-20	30	532 85 10-74	Hardened Washer	55	532 75 11-53	Nut, Hex
11	532 44 07-39	Engine Zone Control Cable	31	532 85 02-63	Helical Lockwasher 3/8	59	532 44 15-59	Selector Spring, Rear
14	532 41 06-00	Axle Arm Assembly, Rear, LH	32	532 85 10-84	Screw, Hex Head, Grade 8, 3/8-24 x 1-3/8	61	532 40 16-30	Washer, Curved, Cylindrical
15	532 40 66-89	Axle Arm Assembly, Front, LH	33	873 80 05-00	Nut, Hex, Nylock 5/16-18	--	532 40 47-64	Warning Decal (not shown)
16	532 19 19-38	Handle Knob	34	532 40 35-08	Wheel Bracket Support, LH	--	532 19 37-32	Operator's Manual, English
17	532 41 06-01	Axle Arm Assembly, Rear, RH	35	532 40 35-07	Wheel Bracket Support, RH	--	532 19 37-34	Operator's Manual, French
18	532 40 66-90	Axle Arm Assembly, Front, RH	36	532 41 05-94	Wheel Bracket Adjuster	--	532 43 89-01	Repair Parts Manual
19	532 05 17-93	Hairpin Cotter	37	532 16 08-33	Hinge Rod			
20	874 76 04-12	Screw, Hex Cap Head 1/4-20	38	532 40 47-63	Danger Decal			
			39	532 40 64-28	Selector Spring, Front			
			40	532 08 78-77	Selector Knob			
			41	532 15 04-06	Screw, Hex Head, Threaded, Rolled			

**NOTE:** All component dimensions given in U.S. inches. 1 inch = 25.4 mm. **IMPORTANT:** Use only Original Equipment Manufacturer (O.E.M.) replacement parts. Failure to do so could be hazardous, damage your lawn mower and void your warranty.