

### LIMITED WARRANTY

The Manufacturer warrants to the original consumer purchaser that this product as manufactured is free from defects in materials and workmanship. For a period of two (2) years from date of purchase by the original consumer purchaser, we will repair or replace, at our option, without charge for parts or labor incurred in replacing parts, any part which we find to be defective due to materials or workmanship. This Warranty is subject to the following limitations and exclusions.

1. This warranty does not apply to the engine, transaxle/transmission components, battery (except as noted below) or components parts thereof. Please refer to the applicable manufacturer's warranty on these items.
2. Transportation charges for the movement of any power equipment unit or attachment are the responsibility of the purchaser. Transportation charges for any parts submitted for replacement under this warranty must be paid by the purchaser unless such return is requested by the manufacturer.
3. Battery Warranty: On products equipped with a Battery, we will replace, without charge to you, any battery which we find to be defective in manufacture, during the first ninety (90) days of ownership. After ninety (90) days, we will exchange the Battery, charging you 1/12 of the price of a new Battery for each full month from the date of the original sale. Battery must be maintained in accordance with the instructions furnished.
4. The Warranty period for any products used for rental or commercial purposes is limited to 45 days from the date of original purchase.
5. This Warranty applies only to products which have been properly assembled, adjusted, operated, and maintained in accordance with the instructions furnished. This Warranty does not apply to any product which has been subjected to alteration, misuse, abuse, improper assembly or installation, delivery damage, or to normal wear of the product.
6. Exclusions: Excluded from this Warranty are belts, blades, blade adapters, normal wear, normal adjustments, standard hardware and normal maintenance.
7. In the event you have a claim under this Warranty, you must return the product to an authorized service dealer.

Should you have any unanswered questions concerning this Warranty, contact:

Weed Eater  
Customer Service Department  
9335 Harris Corners Parkway  
Charlotte, NC 28269 USA

In Canada contact:  
Weed Eater  
Customer Service Department  
5855 Terry Fox Way  
Mississauga, Ontario L5V 3E4

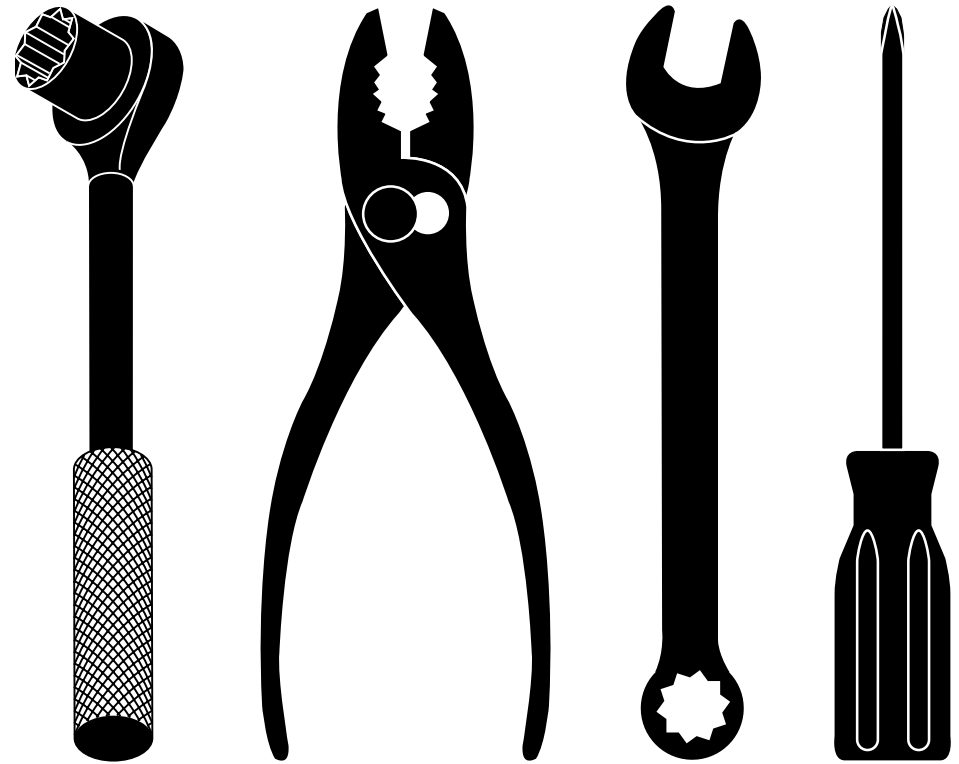
giving the model number, serial number and date of purchase of your product and the name and address of the authorized dealer from whom it was purchased.

**THIS WARRANTY DOES NOT APPLY TO INCIDENTAL OR CONSEQUENTIAL DAMAGES AND ANY IMPLIED WARRANTIES ARE LIMITED TO THE SAME TIME PERIODS STATED HEREIN FOR OUR EXPRESSED WARRANTIES.**

Some areas do not allow the limitation of consequential damages or limitations of how long an implied Warranty may last, so the above limitations or exclusions may not apply to you. This Warranty gives you specific legal rights, and you may have other rights which vary from locale to locale.

This is a limited Warranty within the meaning of that term as defined in the Magnuson-Moss Act of 1975.

# WEED EATER®

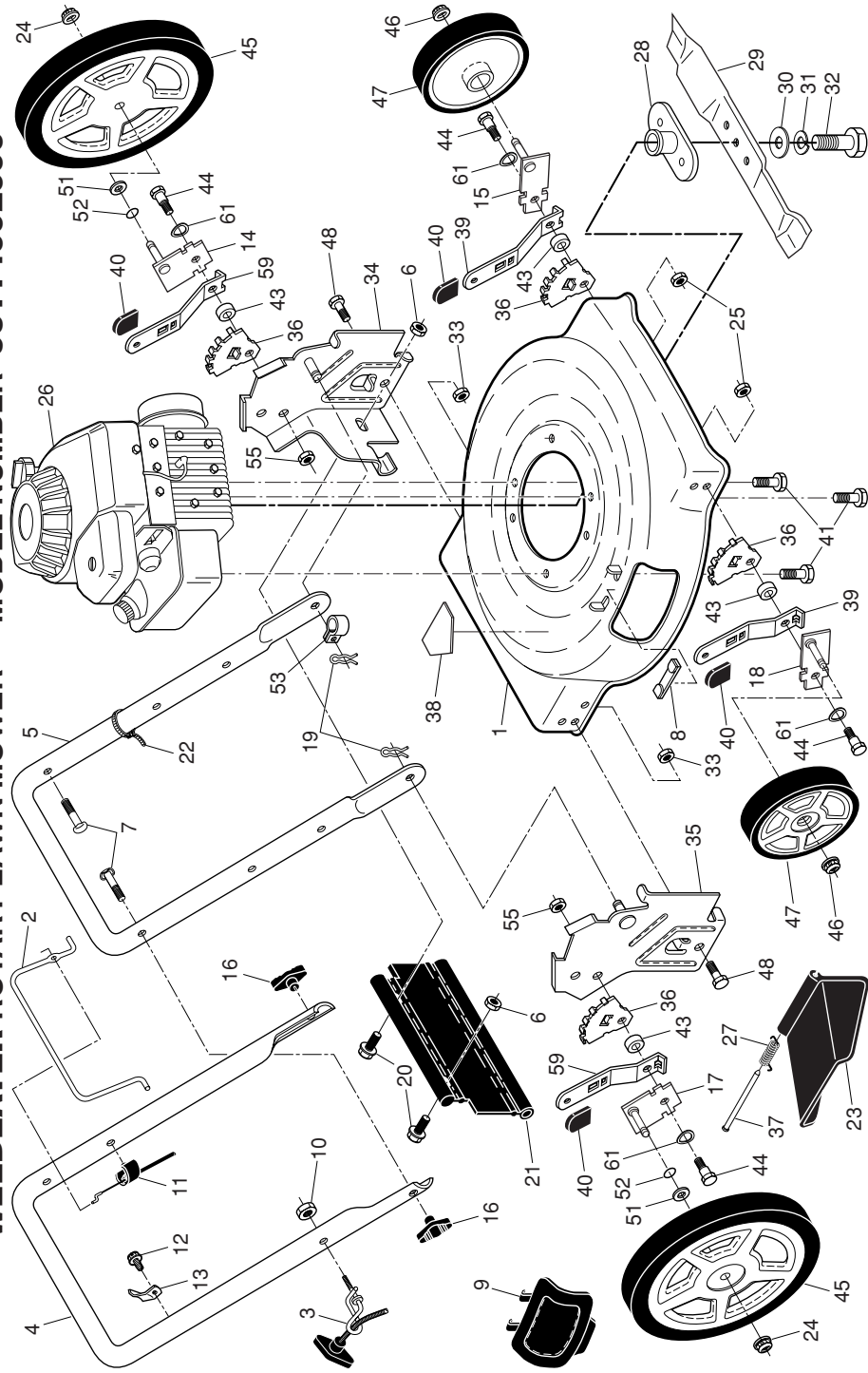


## REPAIR PARTS MANUAL MODEL NO. 96114002000 Rotary Lawn Mower

For Parts and Service or Technical Assistance, call 1-800-487-5951

# WEED EATER®

# **WEEDEATER ROTARY LAWN MOWER -- MODEL NUMBER 96114002000**



2

# **WEEDEATER ROTARY LAWN MOWER -- MODEL NUMBER 96114002000**

KEY PART NO.	DESCRIPTION
1 532 43 76-96	Lawn Mower Housing Assembly (Includes Key Number 38)
2 532 19 55-74	Control Bar
3 532 19 47-88	Rope Guide
4 532 19 55-47	Upper Handle
5 532 17 42-91	Lower Handle
6 873 80 04-00	Locknut, Hex 1/4-20
7 532 19 15-74	Handle Bolt 5/16-18
8 532 16 16-22	Clip, Closeout
9 532 16 08-30	Mulcher Plate
10 532 13 20-04	Locknut, Hex 1/4-20
11 532 18 32-81	Engine Zone Control Cable
12 532 75 06-34	Screw, Hex Head, Threaded, Rolled #10-24 x1/2
13 532 43 00-34	Up-Stop Bracket
14 532 41 06-00	Axle Arm Assembly (Rear, LH)
15 532 40 66-89	Axle Arm Assembly (Front, LH)
16 532 19 19-38	Handle Knob
17 532 41 06-01	Axle Arm Assembly (Rear, RH)
18 532 40 66-90	Axle Arm Assembly (Front, RH)
19 532 05 17-93	Hairpin Cotter
20 874 76 04-12	Screw
21 532 41 31-60	Rear Skirt
22 532 06 64-26	Wire Tie
23 532 16 08-31	Discharge Guard
24 532 40 91-49	Nut, Hex
25 532 42 65-89	Nut, Hex
26 ---	Engine, Briggs & Stratton, Model Number 10L502-1016-F1 (For engine service and replacement parts, call Briggs & Stratton at 1-800-233-3723)
27 532 40 85-85	Torsion Spring

KEY PART NO.	DESCRIPTION
28 532 85 09-77	Blade Adapter
29 532 40 67-13	22" Blade
30 532 85 10-74	Hardened Washer
31 532 85 02-63	Helical Lockwasher 3/8
32 532 85 10-84	Hex Head Screw 3/8-24 x 1/4 Grade 8
33 873 93 05-00	Nut, Hex, Centerlock 5/16-18
34 532 40 35-08	Support, Wheel Bracket, LH
35 532 40 35-07	Support, Wheel Bracket, RH
36 532 41 05-94	Adjuster, Wheel Bracket
37 532 16 08-33	Hinge Rod
38 532 40 47-63	Danger Decal
39 532 40 64-28	Selector Spring, Front
40 532 08 78-77	Selector Knob
41 532 15 04-06	Screw, Hex Head, Threaded, Rolled 3/8-16 x 1
43 532 40 16-29	Spacer
44 532 40 16-38	Shoulder Bolt
45 532 43 63-81	Wheel & Tire Assembly, Rear
46 532 40 91-48	Locknut, Hex 3/8-16
47 532 43 63-80	Wheel & Tire Assembly, Front
48 874 76 05-14	Bolt, Hex Head
51 532 08 83-48	Washer, Flat
52 532 19 74-80	O-Ring
53 532 19 79-91	Clip, Cable
55 532 75 11-53	Nut, Hex
59 532 41 05-95	Selector Spring, Rear
61 532 40 16-30	Washer, Curved, Cylindrical
-- 532 40 47-64	Warning Decal (not shown)
-- 532 19 37-32	Operator's Manual, English
-- 532 19 37-35	Operator's manual, Spanish
-- 532 43 81-94	Repair Parts Manual

**IMPORTANT:** Use only Original Equipment Manufacturer (O.E.M.) replacement parts. Failure to do so could be hazardous, damage your lawn mower and void your warranty.

**NOTE:** All component dimensions given in U.S. inches. 1 inch = 25.4 mm.

3