

REPAIR PARTS MANUAL
MODEL NO. PR600Y22SHP
MFG. ID. NO. 96122001403
Rotary Lawn Mower

For Parts and Service, contact our authorized distributor: call 1-800-849-1297
For Technical Assistance: call 1-800-829-5886

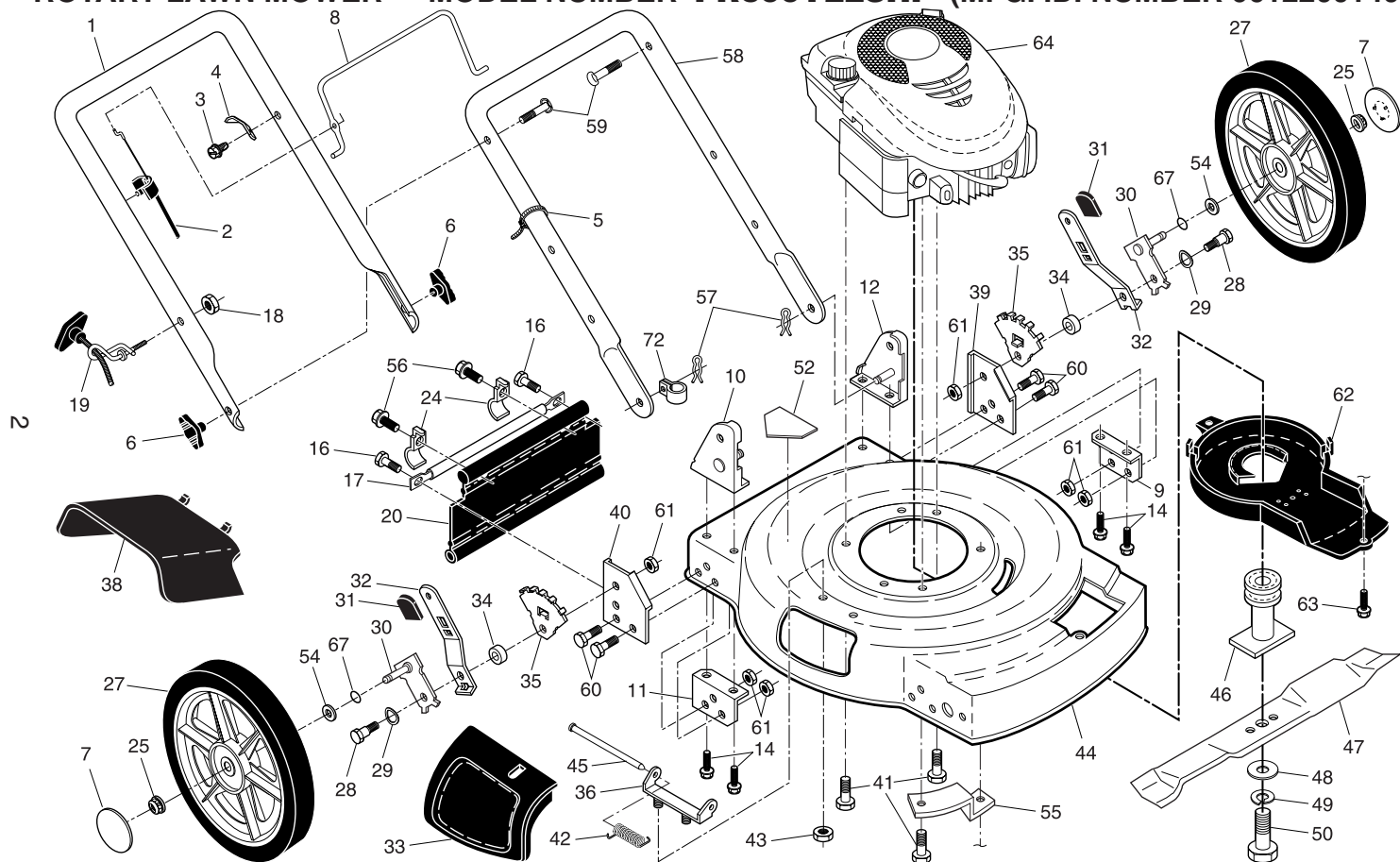
Poulan PRO

Poulan PRO

419647 02.13.08 BY

Printed in U.S.A.

ROTARY LAWN MOWER -- MODEL NUMBER PR600Y22SHP (MFG. ID. NUMBER 96122001403)

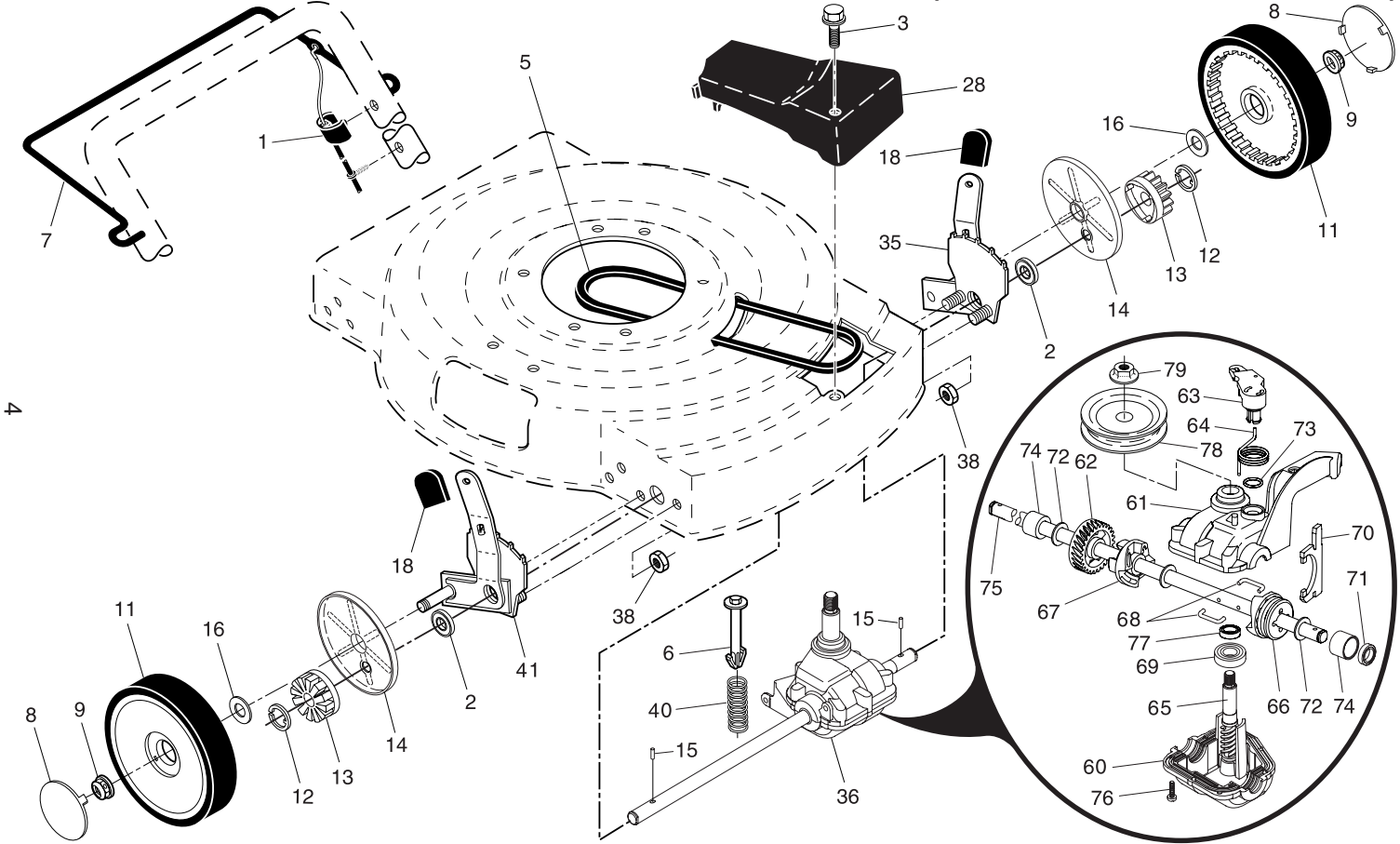


ROTARY LAWN MOWER - - MODEL NUMBER **PR600Y22SHP** (MFG. ID. NUMBER 96122001403)

| KEY NO. | PART NO. | DESCRIPTION | KEY NO. | PART NO. | DESCRIPTION | KEY NO. | PART NO. | DESCRIPTION |
|---------|------------|-------------------------------------|---------|---------------|--|---------|---------------|--|
| 1 | 194203X479 | Upper Handle | 30 | 401180X004 | Axle Arm Assembly | 54 | 88348 | Washer, Flat |
| 2 | 183567 | Engine Zone Control Cable | 31 | 701037X421 | Knob, Selector | 55 | 188839X004 | Mounting Bracket, Debris Shield |
| 3 | 750634 | Screw | 32 | 401621X004 | Spring, Selector | | | |
| 4 | 850733X004 | Bracket, Upstop | 33 | 151889 | Mulcher Door | 56 | 750097 | Screw, Hex Washer Head #10-24 x 1/2 |
| 5 | 66426 | Wire Tie | 34 | 401629 | Spacer | | | |
| 6 | 189713X428 | Handle Knob | 35 | 407501X005 | Bracket, Wheel Adjuster | 57 | 51793 | Hairpin Cotter |
| 7 | 407794X421 | Hubcap | 36 | 154132 | Bracket, Housing | 58 | 151590X479 | Lower Handle |
| 8 | 194199X421 | Control Bar | 38 | 176509 | Deflector, Discharge | 59 | 191574 | Handle Bolt |
| 9 | 153282X479 | Support Bracket, Handle, LH | 39 | 193248X479 | Support Bracket, LH | 60 | 74760612 | Bolt |
| 10 | 170345X479 | Handle Bracket, RH | 40 | 193247X479 | Support Bracket, RH | 61 | 751592 | Locknut, Hex |
| 11 | 153350X479 | Support Bracket, Handle, RH | 41 | 150406 | Screw, Hex Head, Threaded, Rolled 3/8-16 x 1-1/8 | 62 | 405843 | Debris Shield |
| 12 | 170346X479 | Handle Bracket, LH | | | | 63 | 192325 | Screw |
| 13 | 149741 | Screw, Thread Cutting 5/16-18 x 3/4 | 42 | 152124 | Spring, Torsion | 64 | - - - | Engine, Briggs & Stratton, Model Number 123K02 |
| 14 | | | 43 | 73800400 | Locknut, Hex | | | (For engine service and replacement parts, call Briggs & Stratton at 1-800-233-3723) |
| 15 | 54583 | Screw | 44 | 412210 | Kit, Lawn Mower Housing (Includes Key Number 46) | | | |
| 16 | 165175X479 | Support Rod | | | | | | |
| 17 | 132004 | Locknut, Keps | 45 | 147286 | Rod, Hinge | 67 | 197480 | O-Ring |
| 18 | 194788 | Rope Guide | 46 | 189179 | Blade Adapter / Pulley | 72 | 197991 | Clip, Cable |
| 19 | 413160 | Rear Skirt | 47 | 406713 | Blade, 22" | - - | 404764 | Warning Decal (not shown) |
| 20 | 192301X004 | Clamp, Rear Skirt | 48 | 851074 | Washer, Hardened | - - | 193733 | Operator's Manual, English |
| 21 | 409149 | Locknut, Hex 3/18-16 | 49 | 850263 | Washer, Lock, Helical | - - | 193736 | Operator's Manual, French |
| 22 | 408852X421 | Wheel & Tire Assembly | 50 | 851084 | Screw, Hex Head, Grade 8 3/8-24 x 1-3/8 | - - | 419647 | Repair Parts Manual |
| 23 | 142748 | Shoulder Bolt | | | | | | |
| 24 | 401630 | Washer, Curved, Cylindrical | 52 | 404763 | Decal, Danger | | | |

NOTE: All component dimensions given in U.S. inches. 1 inch = 25.4 mm. **IMPORTANT:** Use only Original Equipment Manufacturer (O.E.M.) replacement parts. Failure to do so could be hazardous, damage your lawn mower and void your warranty.

ROTARY LAWN MOWER - - MODEL NUMBER **PR600Y22SHP** (MFG. ID. NUMBER 96122001403)



ROTARY LAWN MOWER - - MODEL NUMBER **PR600Y22SHP** (MFG. ID. NUMBER 96122001403)

| KEY NO. | PART NO. | DESCRIPTION |
|---------|------------|--|
| 1 | 194653 | Drive Control Cable Assembly |
| 2 | 191039 | Bearing, Wheel Adjuster |
| 3 | 143603 | Pan Head Tapping Screw #10-24 x 2-3/4 |
| 5 | 146527 | V-Belt |
| 6 | 150495 | Spring Retainer |
| 7 | 194185X421 | Control Bar, Drive |
| 8 | 407793X421 | Hubcap |
| 9 | 409149 | Locknut, Hex |
| 11 | 180775 | Wheel & Tire Assembly |
| 12 | 12000058 | E-Ring |
| 13 | 403849 | Pinion |
| 14 | 189403 | Dust Cover |
| 15 | 404845 | Pawl, Drive |
| 16 | 67725 | Washer |
| 18 | 701037X421 | Selector Knob |
| 28 | 194398X428 | Drive Cover |
| 35 | 408862 | Kit, Wheel Adjuster, LH (Includes Knob and Bearing) |
| 36 | 415226 | * Gear Case Assembly, Complete |
| 38 | 73800400 | Locknut, Hex 1/4-20 |
| 40 | 137090 | Spring |
| 41 | 408861 | Kit, Wheel Adjuster, RH (Includes Knob and Bearing) |

| KEY NO. | PART NO. | DESCRIPTION |
|---------|----------|--------------------|
| 60 | 183497 | Case, Lower |
| 61 | 183498 | Case, Upper |
| 62 | 183499 | Gear, 27 Teeth |
| 63 | 183500 | Lever, Clutch |
| 64 | 183501 | Spring, Return |
| 65 | 416988 | Shaft, Input |
| 66 | 183503 | Dog, Movable |
| 67 | 183504 | Dog, Fixed |
| 68 | 183505 | Wire, Formed |
| 69 | 183506 | Bearing, Ball |
| 70 | 183507 | Fork, Shift |
| 71 | 183508 | Seal, Output Shaft |
| 72 | 183509 | Washer |
| 73 | 183510 | Seal, Case |
| 74 | 183511 | Bushing |
| 75 | 196561 | Shaft, Output |
| 76 | 183513 | Screw |
| 77 | 183514 | Seal, Input Shaft |
| 78 | 416987 | Pulley, Drive |
| 79 | 416986 | Locknut, Hex |

* **NOTE:** We advise Total Multis EP00 semi-liquid grease or a comparable grade (quantity 1.15 oz)

NOTE: All component dimensions given in U.S. inches. 1 inch = 25.4 mm. **IMPORTANT:** Use only Original Equipment Manufacturer (O.E.M.) replacement parts. Failure to do so could be hazardous, damage your lawn mower and void your warranty.