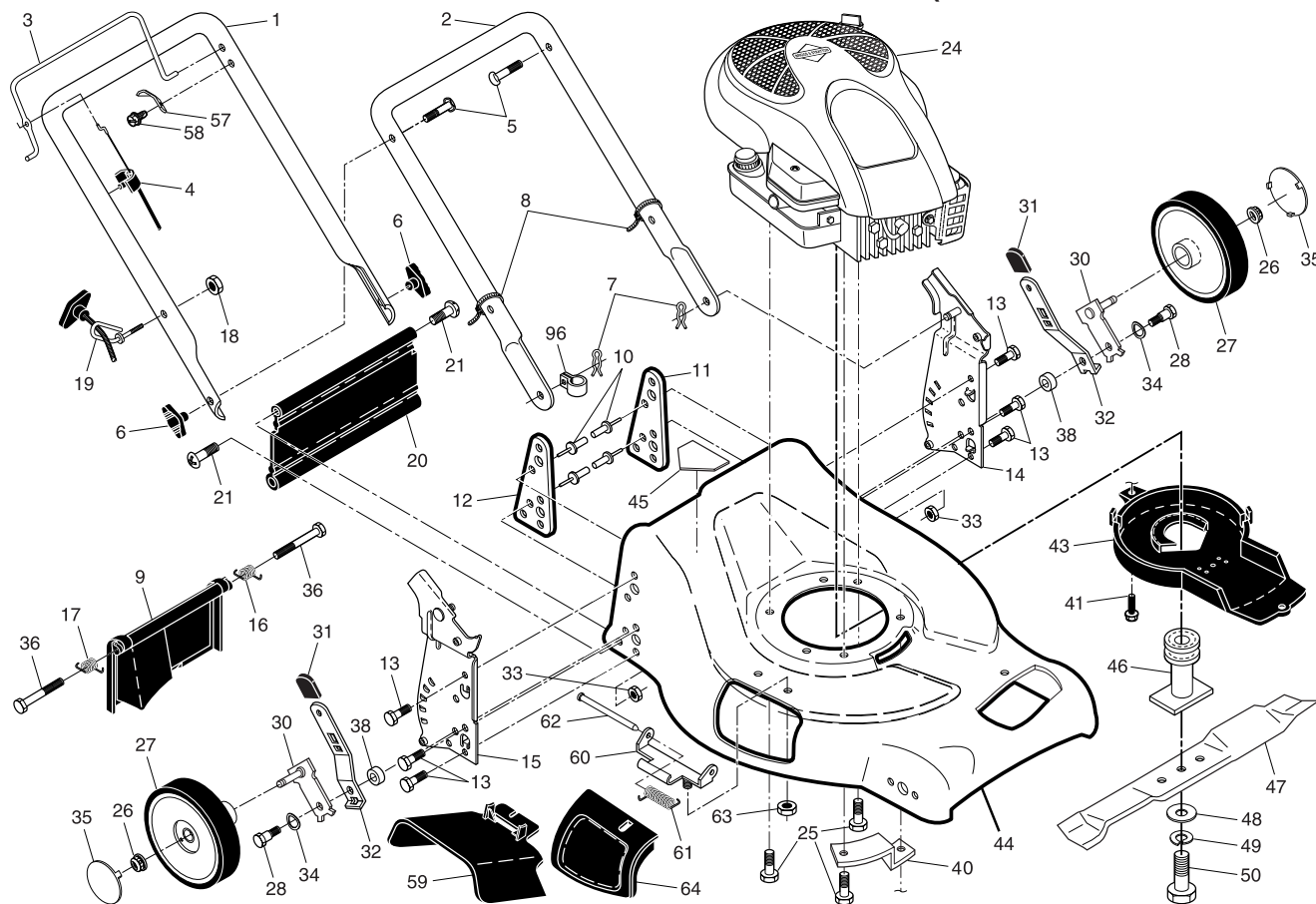


ROTARY LAWN MOWER - - MODEL NUMBER PR600Y21RP (MFG. ID. NO. 96142003401)

2



ROTARY LAWN MOWER - - MODEL NUMBER PR600Y21RP (MFG. ID. NO. 96142003401)

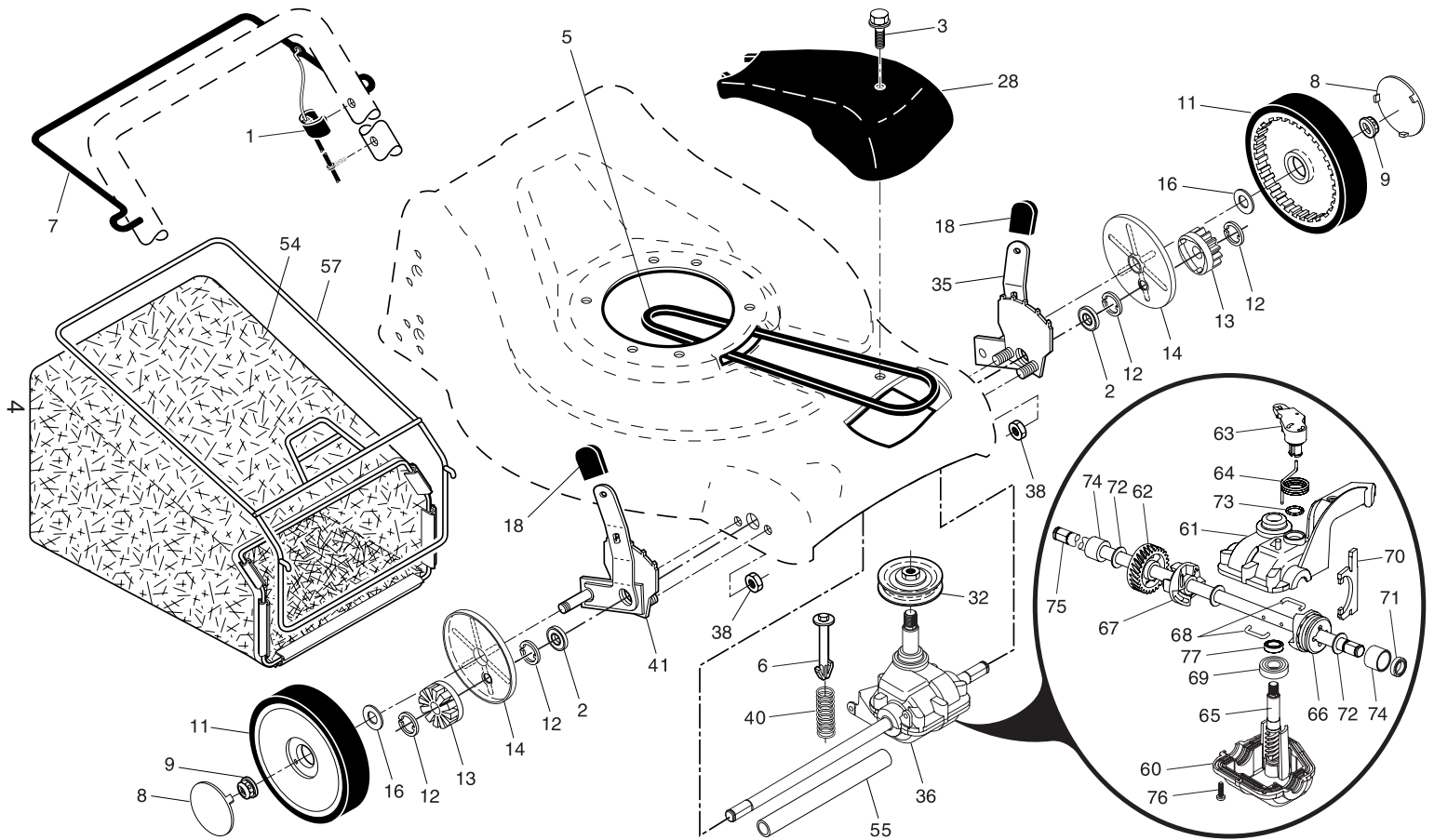
KEY NO.	PART NO.	DESCRIPTION
1	194200X479	Upper Handle
2	151721X479	Lower Handle
3	194199X428	Control Bar
4	183567	Engine Zone Control Cable
5	191574	Handle Bolt
6	189713X428	Handle Knob
7	51793	Hairpin Cotter
8	66426	Wire Tie
9	401812X428	Rear Door Assembly
10	128415	Pop Rivet
11	406573X479	Support Bracket, LH
12	406574X479	Support Bracket, RH
13	17060410	Screw, Tapping 1/4-20 x 5/8
14	175082X479	Handle Bracket Assembly, LH
15	175081X479	Handle Bracket Assembly, RH
16	405417	Spring, Rear Door, LH
17	405418	Spring, Rear Door, RH
18	132004X421	Nut, Hex 1/4-20
19	194788	Rope Guide
20	189005	Rear Skirt
21	88652	Hinge Screw 1/4-20 x 1-1/4
24	- - -	Engine, Briggs & Stratton, Model Number 120T02 (For engine service and replacement parts, call Briggs & Stratton at 1-800-233-3723)
25	150406	Hex Head Thread Rolling Screw 3/8-16 x 1-1/8
26	83923	Hex Flange Nut
27	150339	Wheel & Tire Assembly
28	401638	Shoulder Bolt 5/16-18 x 1-21/64
30	401178X004	Axle Arm Assembly, Rear
31	701037X421	Selector Knob

KEY NO.	PART NO.	DESCRIPTION
32	401623X004	Selector Spring
33	198541	Nut, Hex
34	401630	Washer, Curved, Cylindrical
35	407793X421	Hubcap
36	184193	Bolt, Rear Door
39	401629	Spacer
40	188839X004	Mounting Bracket, Debris Shield
41	192325	Screw, Debris Shield
43	405845	Debris Shield
44	412215	Kit, Lawn Mower Housing (Includes Key Numbers 11, 12 and 45)
45	404763	Danger Decal
46	189179	Blade Adapter / Pulley
47	406712	Blade, 21"
48	851074	Hardened Washer
49	850263	Helical Washer
50	851084	Screw, Hex Head, Grade 8, 3/8-24 x 1-3/8
57	850733X004	Bracket, Upstop
58	750634	Screw #10-24 x 1/2
59	175071	Discharge Deflector
60	173735	Hinge Bracket
61	193000	Hinge Spring
62	175650	Hinge Rod
63	73800400	Nut, Hex
64	175066	Mulcher Door
96	197991	Clip, Cable
- -	404764	Warning Decal (not shown)
- -	193733	Operator's Manual, English
- -	193736	Operator's Manual, French
- -	412462	Replacement Parts Manual

NOTE: All component dimensions given in U.S. inches. 1 inch = 25.4 mm.

IMPORTANT: Use only Original Equipment Manufacturer (O.E.M.) replacement parts. Failure to do so could be hazardous, damage your lawn mower and void your warranty.

ROTARY LAWN MOWER - - MODEL NUMBER **PR600Y21RP** (MFG. ID. NO. 96142003401)



ROTARY LAWN MOWER - - MODEL NUMBER **PR600Y21RP** (MFG. ID. NO. 96142003401)

KEY NO.	PART NO.	DESCRIPTION
1	194653	Control Cable Assembly
2	88059	Bearing, Wheel Adjuster
3	175262	Pan Head Tapping Screw #10-24 x 2-3/4
5	175436	V-Belt
6	150495	Spring Retainer
7	194185X421	Control Bar, Drive
8	407793X421	Hubcap
9	145212	Nut, Flangelock, Special Thread
11	180775	Wheel & Tire Assembly
12	12000058	E-Ring
13	137054	Pinion
14	189403	Dust Cover
16	67725	Washer 1/2 x 1-1/2 x .134
18	701037X421	Selector Knob
28	181468	Dive Cover
32	194126	Drive Pulley
35	412461	Kit, Wheel Adjuster, LH (Includes Knob and Bearing)
36	180184	Gear Case Assembly, Complete
38	73800400	Locknut, Hex 1/4-20
40	137090	Spring
41	412460	Kit, Wheel Adjuster, RH (Includes Knob and Bearing)

KEY NO.	PART NO.	DESCRIPTION
54	412214	Grassbag
55	175739	Driveshaft Cover
57	401802	Frame, Grassbag
60	183497	* Case, Lower
61	183498	* Case, Upper
62	183499	Gear, 27 Teeth
63	183500	Lever, Clutch
64	183501	Spring, Return
65	183502	Shaft, Input
66	183503	Dog, Movable
67	183504	Dog, Fixed
68	183505	Wire, Formed
69	183506	Bearing, Ball
70	183507	Fork, Shift
71	183508	Seal, Output Shaft
72	183509	Washer
73	183510	Seal, Case
74	183511	Bushing
75	196613	Shaft, Output
76	183513	Screw
77	183514	Seal, Input Shaft

* Use Dow Corning #709 to reseal Gear Case Halves.

NOTE: All component dimensions given in U.S. inches. 1 inch = 25.4 mm.

IMPORTANT: Use only Original Equipment Manufacturer (O.E.M.) replacement parts. Failure to do so could be hazardous, damage your lawn mower and void your warranty.