



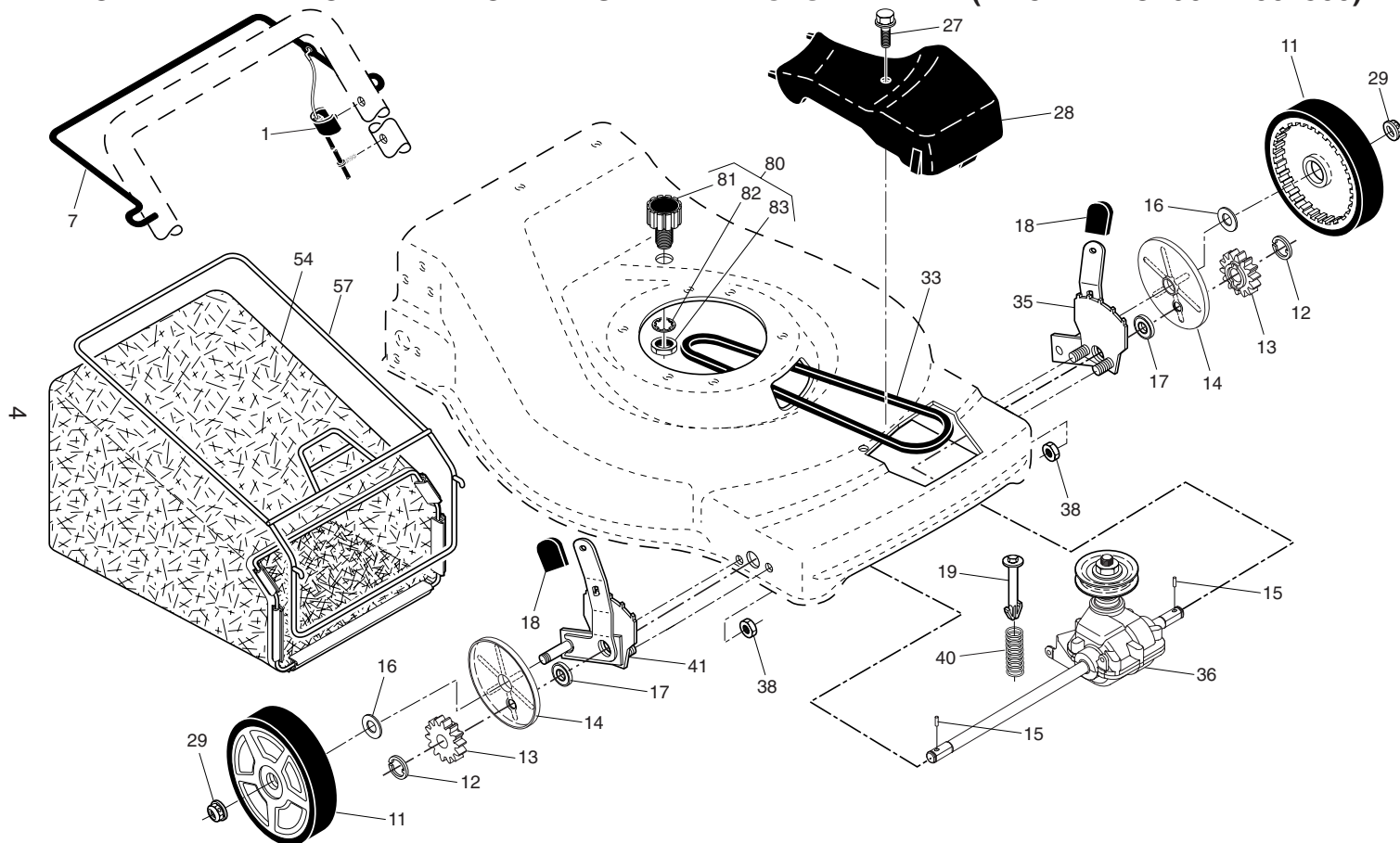
# ROTARY LAWN MOWER - - MODEL NUMBER **PR625Y22RHP** (MFG. ID. NO. 96142007500)

KEY NO.	PART NO.	DESCRIPTION	KEY NO.	PART NO.	DESCRIPTION	KEY NO.	PART NO.	DESCRIPTION
1	427619X479	Upper Handle	27	195012X428	Wheel & Tire Assembly, Rear	49	850263	Washer, Helical
2	183567	Cable, Operator Presence	28	174719	Bolt, Shoulder 3/8-16 x 1	50	851084	Screw, Machine, Hex Head 3/8-24 x 1-3/8 Grade 8
3	850733X004	Bracket, Upstop	29	401630	Washer, Curved, Cylindrical	51	170031	Kit, Front Baffle (Includes Key Number 53)
4	166649	Mulcher Plug	30	401180X004	Axle Arm Assembly	52	404763	Danger Decal
5	66426	Wire Tie	31	701037X421	Selector Knob	53	17600406	Screw, Serrated, TT 1/4-20
6	189713X428	Handle Knob	32	401626X004	Selector Spring	54	88348	Washer, Flat
7	750634	Screw	33	189917X428	Mulcher Door	55	73930600	Nut, Hex 3/8-16
8	427414X421	Control Bar	34	401629	Spacer	56	88652	Hinge Screw 1/4-20 x 1-1/4
9	401813X428	Rear Door Assembly	35	700325X005	Wheel Adjusting Bracket	57	51793	Hairpin Cotter
10	128415	Pop Rivet	36	175735	Hinge Bracket Assembly	58	151590X479	Lower Handle
11	150050	Screw, Self-Tapping #10-24 x 5/8	37	428867	Screw, Sems, Thread Cutting 5/16-18 x 3/4	59	191574	Handle Bolt
ω 12	17060410	Screw, Hex Hex Head, Sems 1/4-20 x 5/8	38	402574X428	Discharge Deflector	60	74760612	Bolt, Hex Head 3/8-16 x 3/4
14	195622X479	Back Plate	39	195915X479	Handle Bracket Assembly, LH	64	- - -	Engine, Briggs & Stratton, Model Number 122T02-1207-EA
15	410545X479	Side Baffle	40	195914X479	Handle Bracket Assembly, RH			
16	176655X479	Discharge Baffle	41	150406	Screw, Hex Head, Threaded, Rolled 3/8-16 x 1-1/8			
17	140661X479	Rear Baffle	42	193000	Spring, Torsion			
18	132004	Keps Locknut 1/4-20	43	73800400	Nut, Hex, Nylock	65	197480	O-Ring
19	194788	Rope Guide	44	430511	Kit, Mower Housing (Includes Key Numbers 14, 15 and 51)	69	197991	Clip, Cable
20	413160	Rear Skirt				71	422044X004	Belt Keeper
21	405421	Spring, Rear Door, LH	45	175650	Rod, Hinge	- -	404764	Warning Decal (not shown)
24	405423	Spring, Rear Door, RH	46	421176	Blade Adapter / Pulley	- -	193733	Operator's Manual, English
25	409149	Nut, Hex, Flanged	47	406713	Blade, 22"	- -	193736	Operator's Manual, French
26	184193	Bolt, Rear Door	48	851074	Washer, Hardened	- -	430543	Repair Parts Manual

**NOTE:** All component dimensions given in U.S. inches. 1 inch = 25.4 mm.

**IMPORTANT:** Use only Original Equipment Manufacturer (O.E.M.) replacement parts. Failure to do so could be hazardous, damage your lawn mower and void your warranty.

# ROTARY LAWN MOWER - - MODEL NUMBER **PR625Y22RHP** (MFG. ID. NO. 96142007500)



# ROTARY LAWN MOWER - - MODEL NUMBER **PR625Y22RHP** (MFG. ID. NO. 96142007500)

KEY NO.	PART NO.	DESCRIPTION
1	194653	Drive Control Assembly (Includes Cable)
7	194185X421	Bar, Drive Control
11	193912X428	Wheel & Tire Assembly, Front
12	12000058	E-Ring
13	403849	Pinion
14	189403	Dust Cover
15	404845	Pawl, Drive
16	67725	Washer, Flat 3/8
17	191039	Bearing, Wheel Adjuster
18	701037X421	Selector Knob
19	150495	Retainer, Spring
27	175262	Pan Head Tapping Screw #10-24 x 2-3/4
28	401271X428	Drive Cover
29	409148	Locknut, Hex

KEY NO.	PART NO.	DESCRIPTION
33	146527	V-Belt
35	424201	Kit, Wheel Adjuster, LH (Includes Knob and Bearing)
36	415226	Gear Case Assembly, Complete
38	73800400	Locknut 1/4-20
40	137090	Spring
41	424200	Kit, Wheel Adjuster, RH (Includes Knob and Bearing)
54	411062	Grassbag Assembly
57	411952	Frame, Grassbag
80	421114	Water Washout Assembly
81	419735	Fitting, Hose, Water Washout
82	415585	Washer, Lock, Internal Tooth
83	415586	Locknut, Hex, with O-Ring

**NOTE:** All component dimensions given in U.S. inches. 1 inch = 25.4 mm.

**IMPORTANT:** Use only Original Equipment Manufacturer (O.E.M.) replacement parts. Failure to do so could be hazardous, damage your lawn mower and void your warranty.