

LIMITED WARRANTY

The Manufacturer warrants to the original consumer purchaser that this product as manufactured is free from defects in materials and workmanship. For a period of two (2) years from date of purchase by the original consumer purchaser, we will repair or replace, at our option, without charge for parts or labor incurred in replacing parts, any part which we find to be defective due to materials or workmanship. This Warranty is subject to the following limitations and exclusions.

1. This warranty does not apply to the engine, transaxle/transmission components, battery (except as noted below) or components parts thereof. Please refer to the applicable manufacturer's warranty on these items.
2. Transportation charges for the movement of any power equipment unit or attachment are the responsibility of the purchaser. Transportation charges for any parts submitted for replacement under this warranty must be paid by the purchaser unless such return is requested by the manufacturer.
3. Battery Warranty: On products equipped with a Battery, we will replace, without charge to you, any battery which we find to be defective in manufacture, during the first ninety (90) days of ownership. After ninety (90) days, we will exchange the Battery, charging you 1/12 of the price of a new Battery for each full month from the date of the original sale. Battery must be maintained in accordance with the instructions furnished.
4. The Warranty period for any products used for rental or commercial purposes is limited to 45 days from the date of original purchase.
5. This Warranty applies only to products which have been properly assembled, adjusted, operated, and maintained in accordance with the instructions furnished. This Warranty does not apply to any product which has been subjected to alteration, misuse, abuse, improper assembly or installation, delivery damage, or to normal wear of the product.
6. Exclusions: Excluded from this Warranty are belts, blades, blade adapters, normal wear, normal adjustments, standard hardware and normal maintenance.
7. In the event you have a claim under this Warranty, you must return the product to an authorized service dealer.

Should you have any unanswered questions concerning this Warranty, contact:

Weed Eater
Customer Service Department
9335 Harris Corners Parkway
Charlotte, NC 28269 USA

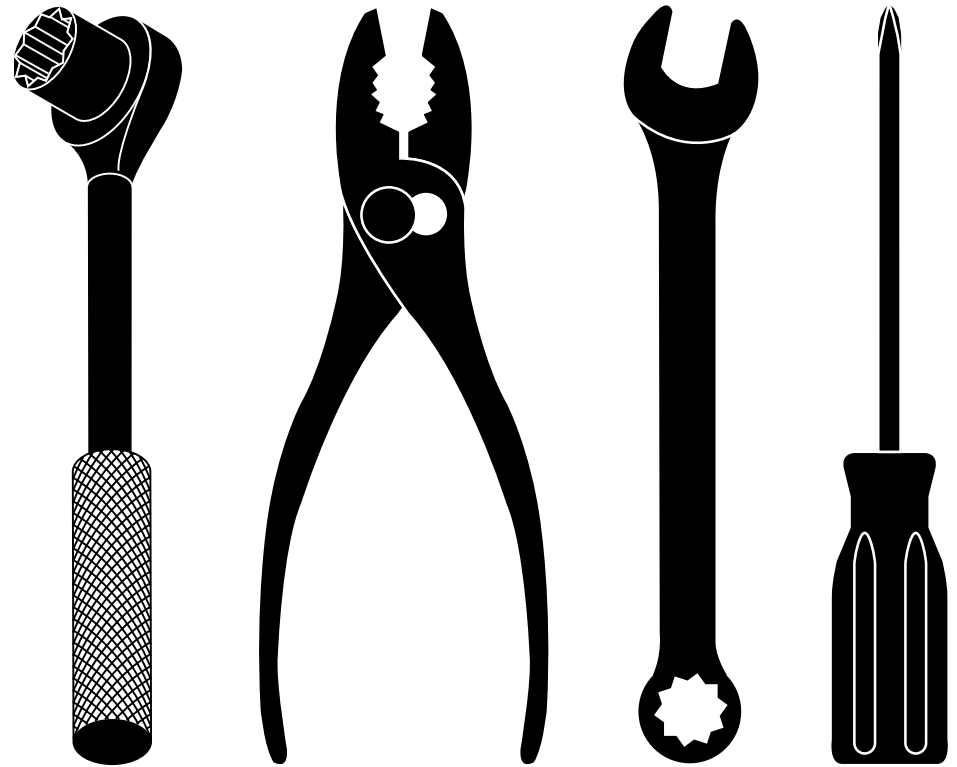
In Canada contact:
Weed Eater
Customer Service Department
5855 Terry Fox Way
Mississauga, Ontario L5V 3E4

giving the model number, serial number and date of purchase of your product and the name and address of the authorized dealer from whom it was purchased.

THIS WARRANTY DOES NOT APPLY TO INCIDENTAL OR CONSEQUENTIAL DAMAGES AND ANY IMPLIED WARRANTIES ARE LIMITED TO THE SAME TIME PERIODS STATED HEREIN FOR OUR EXPRESSED WARRANTIES. Some areas do not allow the limitation of consequential damages or limitations of how long an implied Warranty may last, so the above limitations or exclusions may not apply to you. This Warranty gives you specific legal rights, and you may have other rights which vary from locale to locale.

This is a limited Warranty within the meaning of that term as defined in the Magnuson-Moss Act of 1975.

WEED EATER®



REPAIR PARTS MANUAL MODEL NUMBER 96142008601 Rotary Lawn Mower

For Parts and Service or Technical Assistance, call 1-800-487-5951

WEED EATER®

This exploded view diagram illustrates the assembly of a vehicle chassis. The central component is the main chassis frame (44), which features a large circular cutout. Various components are shown in their relative positions, indicated by dashed lines. Key parts include:

- Engine and Drive Components:** An engine (64) is shown on the left, connected to a drive shaft (58) and a rear axle (5) with wheels (27).
- Front Suspension and Steering:** Components include a steering knuckle (1), a lower control arm (2), a ball joint (3), a tie rod end (7), a shock absorber (18), and a front wheel (25).
- Chassis and Body Panels:** The main chassis frame (44) is surrounded by various panels and structural members, including a front fender (38), a rear fender (33), a side panel (20), and a rear panel (51).
- Fasteners and Hardware:** Numerous bolts, nuts, washers, and pins are shown, each labeled with a number (e.g., 10, 11, 12, 13, 14, 15, 16, 17, 18, 19, 20, 21, 22, 23, 24, 25, 26, 27, 28, 29, 30, 31, 32, 33, 34, 35, 36, 37, 38, 39, 40, 41, 42, 43, 44, 45, 46, 47, 48, 49, 50, 51, 52, 53, 54, 55, 56, 57, 58, 59, 60, 61, 62, 63, 64, 65, 66, 67, 68, 69, 70, 71, 72, 73, 74, 75, 76, 77, 78, 79, 80, 81, 82, 83, 84, 85, 86, 87, 88, 89, 90, 91, 92, 93, 94, 95, 96, 97, 98, 99, 100).

SERVICE NOTES

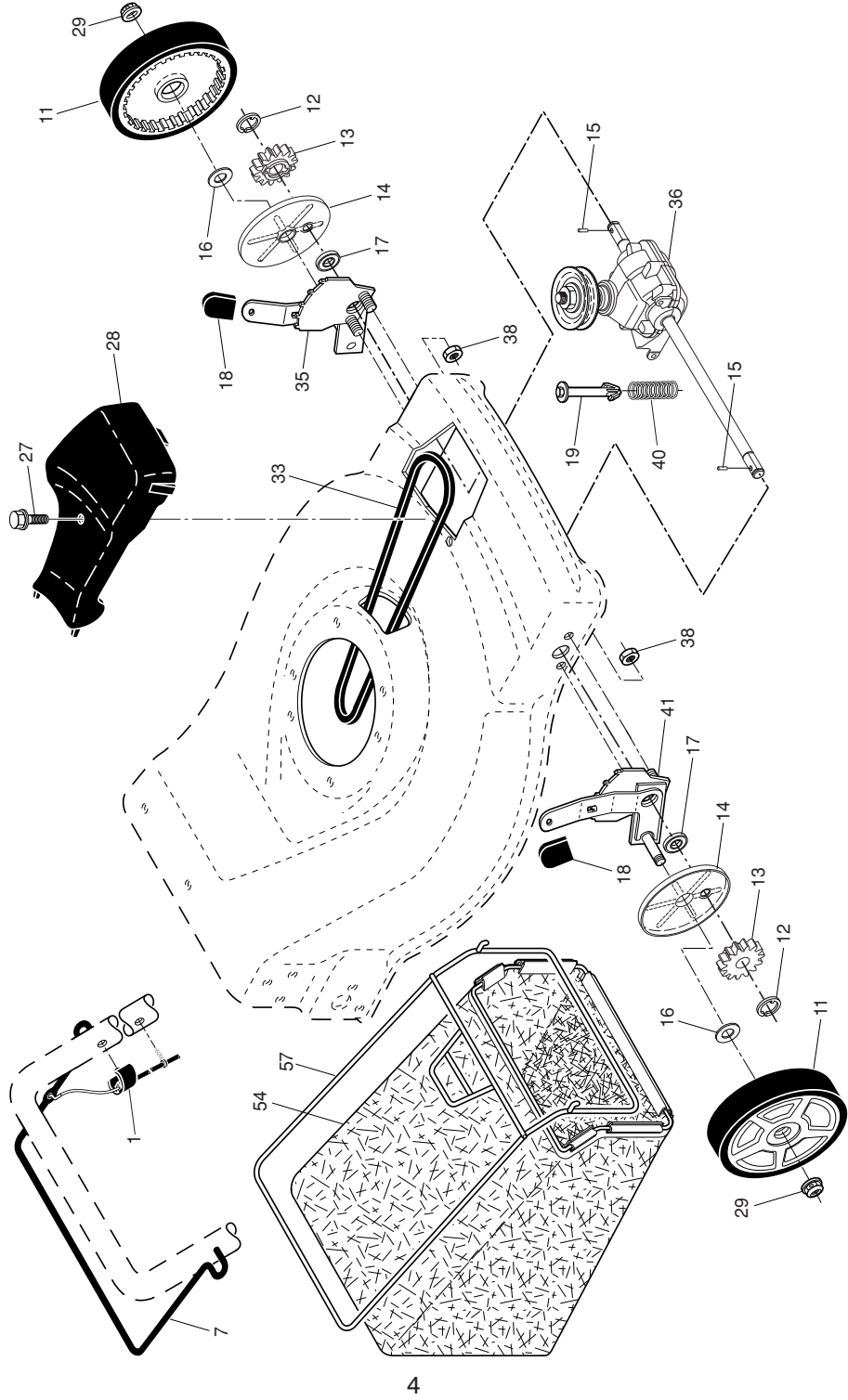
WEED EATER ROTARY LAWN MOWER - - MODEL NUMBER 96142008601

KEY NO.	PART NO.	DESCRIPTION	KEY NO.	PART NO.	DESCRIPTION	KEY NO.	PART NO.	DESCRIPTION
1	532 42 79-75	Upper Handle	28	532 17 47-19	Bolt, Shoulder 3/8-16 x 1	50	532 85 10-84	Screw, Machine, Hex Head 3/8-24 x 1-3/8 Grade 8
2	532 18 35-67	Engine Zone Control Cable	29	532 40 16-30	Washer, Curved, Cylindrical	51	532 17 00-31	Kit, Front Baffle (Includes Key Number 53)
3	532 12 51-62	Bracket, Upstop	30	532 40 78-71	Axle Arm Assembly	52	532 40 47-63	Danger Decal
4	532 16 66-49	Mulcher Plug	31	532 70 10-37	Selector Knob	53	817 60 04-06	Screw, Serrated, Type TT 1/4-20
5	532 06 64-26	Wire Tie	32	532 40 64-28	Selector Spring	55	873 93 06-00	Locknut, Hex 3/8-16
6	532 19 19-38	Handle Knob	33	532 19 60-53	Mulcher Door	56	532 08 86-52	Hinge Screw 1/4-20 x 1-1/4
7	532 75 06-34	Screw	34	532 40 16-29	Spacer	57	532 05 17-93	Hairpin Cotter
8	532 42 77-39	Control Bar	35	532 41 06-24	Wheel Adjusting Bracket, Rear, RH	58	532 15 50-44	Lower Handle
9	532 40 84-92	Rear Door Assembly	36	532 17 57-35	Hinge Bracket Assembly	59	532 19 15-74	Handle Bolt
10	532 12 84-15	Pop Rivet	37	532 42 88-67	Screw	64	---	Engine, Briggs & Stratton, Model Number 122T02-
11	532 15 00-50	Screw, Self-Tapping #10-24 x 5/8	38	532 40 30-73	Discharge Deflector			0913-B1 (For engine service and replacement parts, call Briggs & Stratton at 1-800-233-3723)
12	817 06 04-10	Screw, Hex Hex Head, Sems 1/4-20 x 5/8	39	532 19 70-28	Handle Bracket, LH			Wheel Adjusting Bracket, Rear, LH
14	532 19 70-76	Back Plate	40	532 19 70-27	Handle Bracket, RH			Clip, Cable
15	532 41 13-34	Side Baffle	41	532 15 04-06	Screw, Hex Head, Threaded, Rolled 3/8-16 x 1-1/8	68	532 41 06-23	Belt Keeper
16	532 17 71-33	Discharge Baffle	42	532 19 30-00	Spring, Torsion			Warning Decal (Not Shown)
17	532 14 89-41	Rear Baffle	43	873 80 04-00	Nut, Hex, Nylock			Operator's Manual, English
18	532 13 20-04	Keps Locknut 1/4-20	44	532 43 77-08	Kit, Housing (Includes Key Numbers 14, 15 and 51)			Operator's Manual, Spanish
19	532 19 47-88	Rope Guide	45	532 17 56-50	Rod, Hinge			Repair Parts Manual
20	532 41 31-60	Rear Skirt	46	532 42 11-76	Blade Adapter / Pulley			
21	532 40 54-21	Spring, Rear Door, LH	47	532 40 67-13	Blade, 22"			
24	532 40 54-23	Spring, Rear Door, RH	48	532 85 10-74	Washer, Hardened			
25	532 40 91-48	Nut, Hex, Flanged	49	532 85 02-63	Washer, Helical			
26	532 18 41-93	Bolt, Rear Door						
27	532 43 71-77	Wheel & Tire Assembly, Rear						

NOTE: All component dimensions given in U.S. inches. 1 inch = 25.4 mm.

IMPORTANT: Use only Original Equipment Manufacturer (O.E.M.) replacement parts. Failure to do so could be hazardous, damage your lawn mower and void your warranty.

WEED EATER ROTARY LAWN MOWER -- MODEL NUMBER 96142008601



4

WEED EATER ROTARY LAWN MOWER -- MODEL NUMBER 96142008601

KEY NO.	PART NO.	DESCRIPTION	KEY NO.	PART NO.	DESCRIPTION
1	532 19 46-53	Drive Control Assembly (Includes Cable)	27	532 17 52-62	Screw, Pan Head, Self-Tapping #10-24 x 2-3/4
7	532 19 84-53	Control Bar, Drive	28	532 40 33-42	Drive Cover
11	532 43 63-65	Wheel & Tire Assembly, Front	29	532 40 91-48	Locknut, Hex
12	812 00 00-58	E-Ring	33	532 14 65-27	V-Belt
13	532 40 38-49	Pinion	35	532 43 84-85	Kit, Wheel Adjuster, LH (Includes Knob and Bearing)
14	532 18 94-03	Dust Cover	36	532 41 52-26	Gear Case Assembly, Complete
15	532 40 48-45	Pawl, Drive	38	873 80 04-00	Locknut, Hex 1/4-20
16	532 06 77-25	Washer, Flat 3/8	40	532 13 70-90	Spring
17	532 42 18-36	Bearing Assembly	41	532 43 84-86	Kit, Wheel Adjuster, RH (Includes Knob and Bearing)
18	532 70 10-37	Selector Knob	54	532 41 22-45	Grassbag Assembly
19	532 15 04-95	Retainer, Spring	57	532 41 19-52	Frame, Grassbag

5

NOTE: All component dimensions given in U.S. inches. 1 inch = 25.4 mm.
IMPORTANT: Use only Original Equipment Manufacturer (O.E.M.) replacement parts. Failure to do so could be hazardous, damage your lawn mower and void your warranty.