



- * % (* (

Owner's Manual

• Español, p. 19

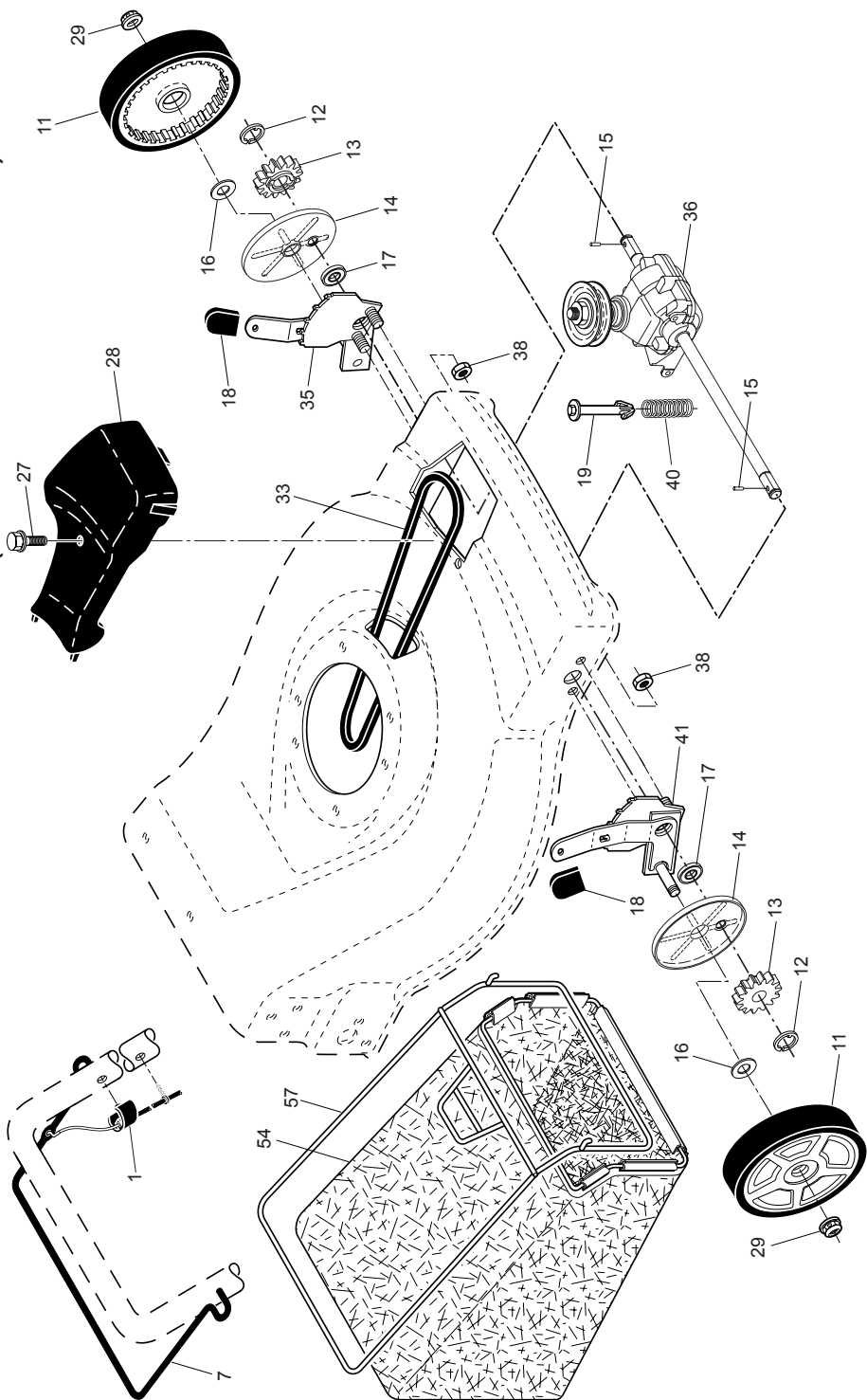
ROTARY LAWN MOWER - - MODEL NUMBER A160H22 (MFG. I.D. NUMBER 96146000400)

KEY NO.	PART NO.	DESCRIPTION	KEY NO.	PART NO.	DESCRIPTION
1	194653	Drive Control Assembly (Includes Cable)	28	401271X428	Drive Cover
7	194185X428	Control Bar, Drive	29	409148	Locknut, Hex
11	193912X428	Wheel & Tire Assembly, Front	33	146527	V-Belt
12	12000058	E-Ring	35	424201	Kit, Wheel Adjuster, LH (Includes Knob and Bearing)
13	403849	Pinion	36	415226	Gear Case Assembly, Complete
14	189403	Dust Cover	38	73800400	Locknut, Hex 1/4-20
15	404845	Pawl, Drive	40	137090	Spring
16	67725	Washer, Flat 3/8	41	424200	Kit, Wheel Adjuster, RH (Includes Knob and Bearing)
17	191039	Bearing, Wheel Adjuster	54	430858	Grassbag Assembly
18	701037	Selector Knob	57	411952	Frame, Grassbag
19	150495	Retainer, Spring			
27	175262	Pan Head Tapping Screw #10-24 x 2-3/4			

NOTE: All component dimensions given in U.S. inches. 1 inch = 25.4 mm.

IMPORTANT: Use only Original Equipment Manufacturer (O.E.M.) replacement parts. Failure to do so could be hazardous, damage your lawn mower and void your warranty.

ROTARY LAWN MOWER -- MODEL NUMBER A160H22 (MFG. I.D. NUMBER 96146000400)



ROTARY LAWN MOWER -- MODEL NUMBER A160H22 (MFG. I.D. NUMBER 96146000400)

KEY NO.	PART NO.	DESCRIPTION	KEY NO.	PART NO.	DESCRIPTION	KEY NO.	PART NO.	DESCRIPTION
1	427619X479	Upper Handle	27	400247X428	Wheel & Tire Assembly, Rear	48	851074	Washer, Hardened
2	183567	Engine Zone Control Cable	28	174719	Bolt, Shoulder 3/8-16 x 1	49	850263	Washer, Helical
3	850733X004	Bracket, Upstop	29	401630	Washer, Curved, Cylindrical	50	851084	Screw, Machine, Hex Head
4	166649	Mulcher Plug	30	401179X004	Axle Arm Assembly			3/8-24 x 1-3/8 Grade 8
5	66426	Wire Tie	31	701037	Selector Knob	51	170031	Kit, Front Baffle
6	189713X428	Handle Knob	32	401621X004	Selector Spring			(Includes Key Number 53)
7	750634	Screw	33	189917X428	Mulcher Door	52	404763	Danger Decal
8	427414X428	Control Bar	34	401629	Spacer	53	17600406	Screw, Serrated,
9	401813X428	Rear Door Assembly	35	407493X005	Wheel Adjusting Bracket,			Type TT 1/4-20
10	128415	Pop Rivet			Rear, RH	55	73930600	Locknut, Hex 3/8-16
11	150050	Screw, Self-Tapping	36	175735	Hinge Bracket Assembly	56	88652	Hinge Screw 1/4-20 x 1-1/4
		#10-24 x 5/8	37	428867	Screw, Sems, Thread Cutting	57	51793	Hairpin Cotter
		Screw, Hex Hex Head,			5/16-18 x 3/4	58	151590X479	Lower Handle
12	17060410	Sems 1/4-20 x 5/8			Discharge Deflector	59	191574	Handle Bolt
14	195622X479	Back Plate	38	402574X428	Handle Bracket, LH	64	---	Engine, Honda, Model
15	410545X479	Side Baffle	39	195917X479	Handle Bracket, RH			Number GCV160-LAS3A
16	176655X479	Discharge Baffle	40	195916X479	Screw, Hex Head, Threaded,			(See Breakdown)
17	140661X479	Rear Baffle	41	150406	Rolled 3/8-16 x 1-1/8	68	407492X005	Wheel Adjusting Bracket,
18	132004	Keps Locknut 1/4-20	42	193000	Spring, Torsion			Rear, LH
19	194788	Rope Guide	43	73800400	Nut, Hex, Nylock	69	197991	Clip, Cable
20	413160	Rear Skirt	44	417405	Kit, Housing (Includes Key	71	422044X004	Belt Keeper
21	405421	Spring, Rear Door, LH			Numbers 14, 15 and 51)	--	404764	Warning Decal (Not Shown)
24	405423	Spring, Rear Door, RH	45	175650	Rod, Hinge	--	430859	Owner's Manual,
25	409148	Nut, Hex, Flanged	46	421176	Blade Adapter / Pulley			English / Spanish
26	184193	Bolt, Rear Door	47	406713	Blade, 22"	--	430860	Owner's Manual, French

NOTE: All component dimensions given in U.S. inches. 1 inch = 25.4 mm.

IMPORTANT: Use only Original Equipment Manufacturer (O.E.M.) replacement parts. Failure to do so could be hazardous, damage your lawn mower and void your warranty.

REPAIR PARTS

ROTARY LAWN MOWER -- MODEL NUMBER A160H22 (MFG. I.D. NUMBER 96146000400)

