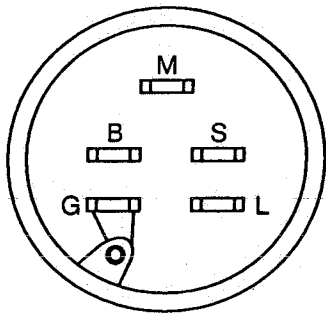
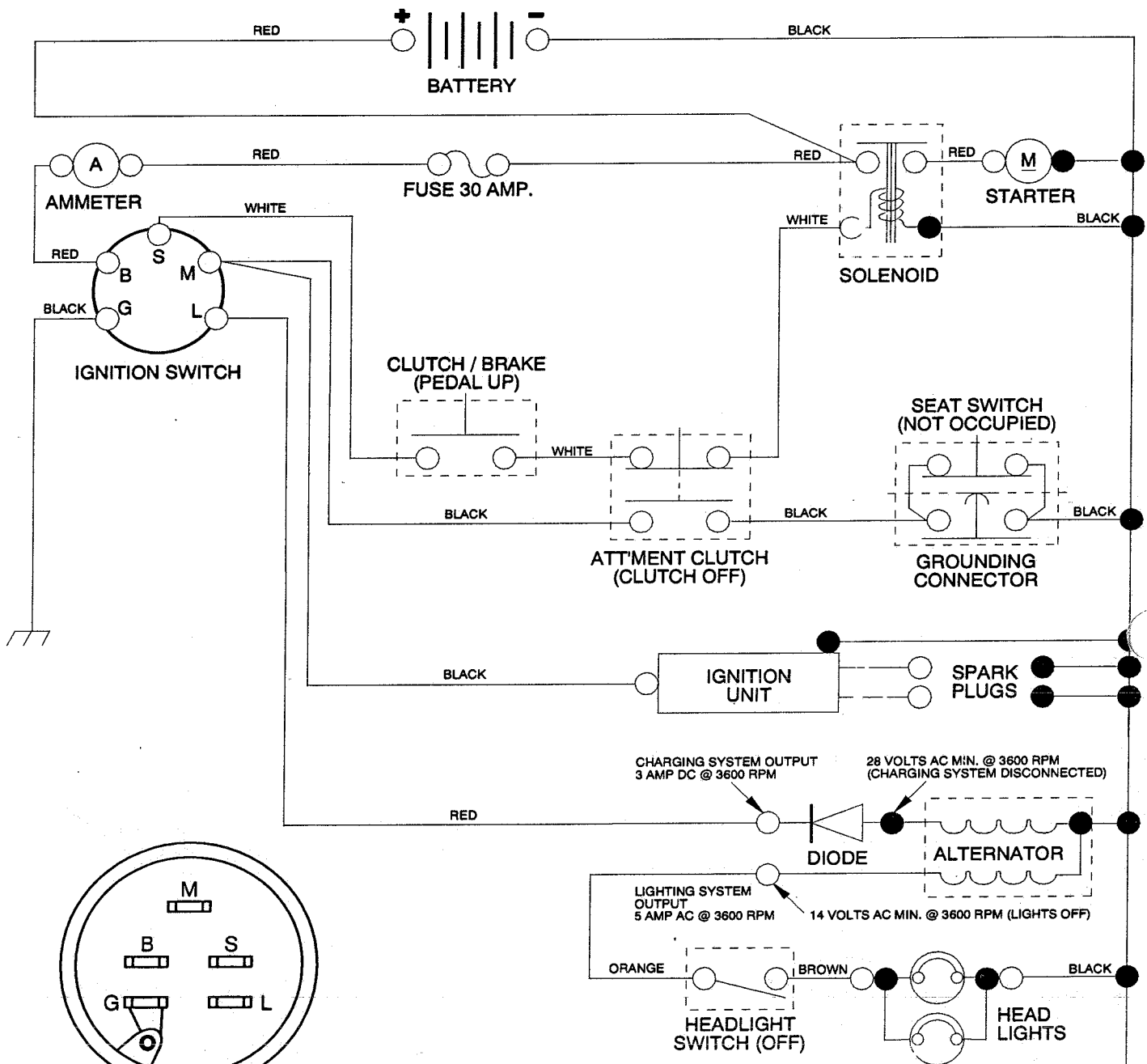


14 HP 42" TRACTOR - - MODEL NUMBER AYP7147A39

SCHEMATIC



IGNITION SWITCH

POSITION	CIRCUIT
OFF	M + G
ON	B + L
START	B + S

WIRING INSULATED CLIPS
NOTE: IF WIRING INSULATED CLIPS WERE REMOVED FOR SERVICING OF UNIT, THEY SHOULD BE REPLACED TO PROPERLY SECURE YOUR WIRING

NOTE
YOUR TRACTOR IS EQUIPPED WITH A SPECIAL ALTERNATOR SYSTEM. THE LIGHTS ARE NOT CONNECTED TO THE BATTERY, BUT HAVE THEIR OWN ELECTRICAL SOURCE. BECAUSE OF THIS, THE BRIGHTNESS OF THE LIGHTS WILL CHANGE WITH ENGINE SPEED. AT IDLE THE LIGHTS WILL DIM. AS THE ENGINE IS SPEEDED UP, THE LIGHTS WILL BECOME THEIR BRIGHTEST.

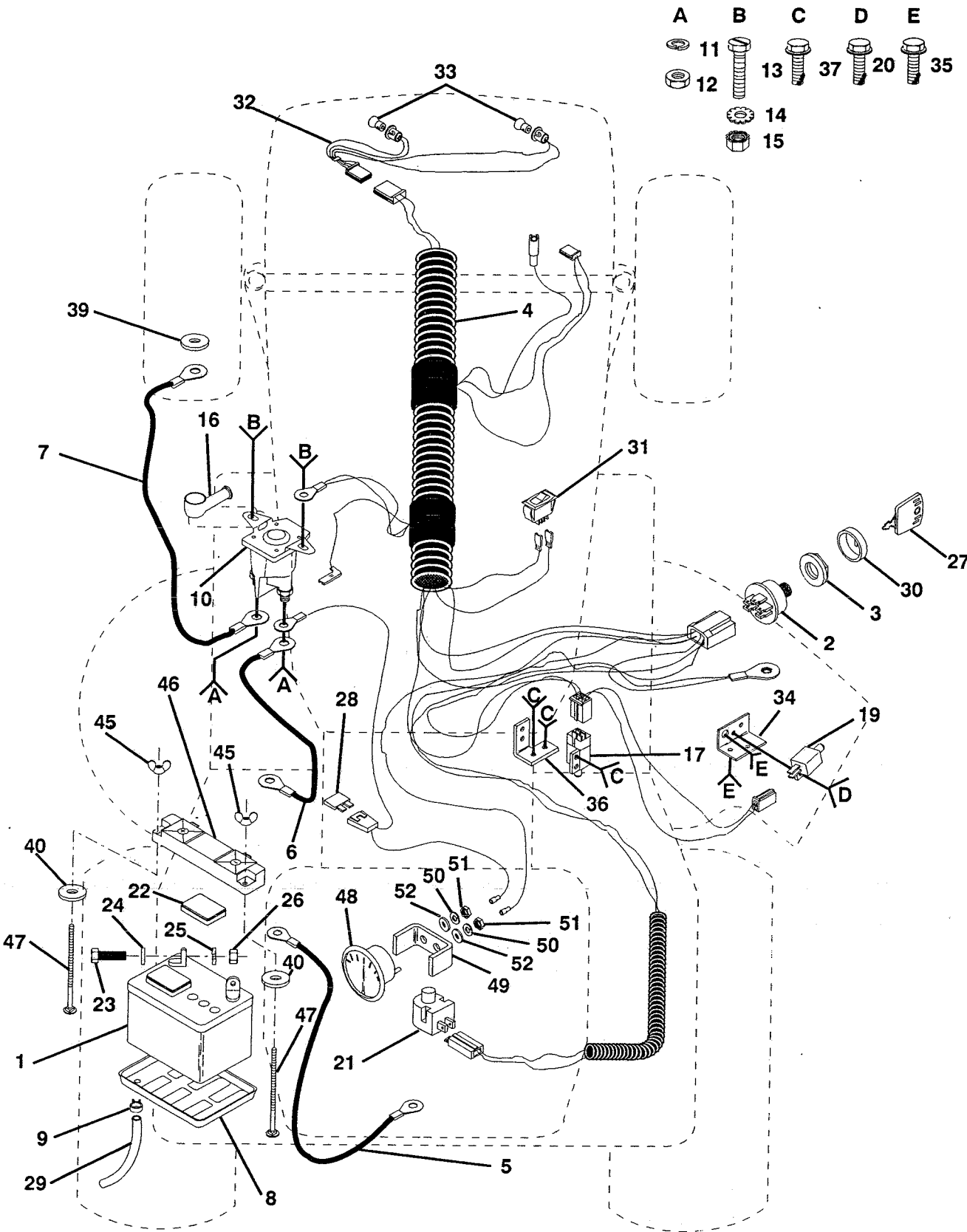
● NON-REMOVABLE CONNECTIONS

○ REMOVABLE CONNECTIONS

REPAIR PARTS

14 HP 42" TRACTOR - - MODEL NUMBER AYP7147A39

ELECTRICAL



REPAIR PARTS

14 HP 42" TRACTOR - - MODEL NUMBER AYP7147A39

ELECTRICAL

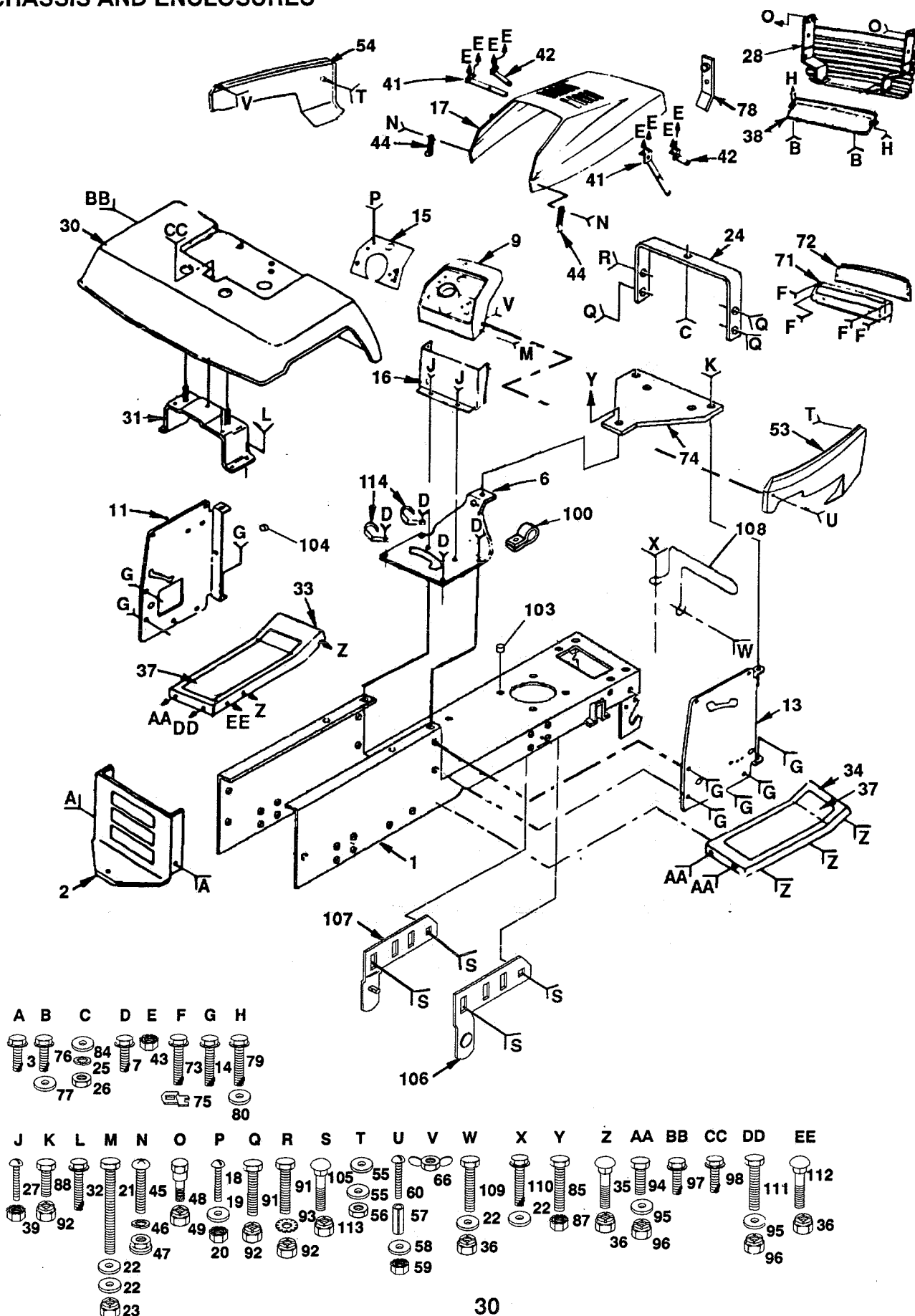
KEY PART NO. NO.	DESCRIPTION
1 121265X	Battery 12 Volt 25 AMP
2 4406R	Switch Ign 5 Term Wo/wash/nut
3 124211X	Nut Ignition
4 138701	Harness Ign B&S Dash HI
5 4207J	Cable Ground 6 Ga 12"black
6 4206J	Cable Battery 6 Ga 22" Red
7 4799J	Cable Battery 6 Ga 11"red
8 7603J	Tray Battery 7 80 X 5 25 Blk
9 109596X	Clamp Hose Olive
10 138406	Solenoid
11 10090400	Washer Lock 1/4
12 73350400	Nut Jam Hex 1/4-20 Unc
13 74780408	Bolt Fin Hex 1/4-20uncx1/2 Gr5
14 11050400	Washer Lock Ext Tooth 1/4
15 73510400	Nut Keps Hex 1/4-20 Unc
16 131563	Cover Terminal Red
17 109553X	Switch Intlk Clutch Gry 4 Term
19 104445X	Switch Intlk Clutch Gry 2 Term
20 17021008	Screw Tap Hex #10-24unc X 1/2
21 121305X	Switch Plunger Nc Gray
22 121264X	Caps Battery 20/25/30 AMP
23 74760412	Bolt Hex Hd 1/4-20unc X 3/4
24 19091016	Washer 9/32 X 5/8 X 16 Ga
25 10040400	Washer Lock Hvy Helical 1/4
26 73220400	Nut Fin Hex 1/4-20 Unc
27 122147X	Key Ign Molded Generic
28 108824X	Fuse 30 amp Auto Green
29 7697J	Tube Plastic 46"
30 123620X	Cover Sw Key Blk 1 25 Text SLT
31 110712X	Switch Light Blk Blk Red
32 136849	Harness Asm Light W/7662j
33 7662J	Bulb Light #1141
34 108236X	Bracket Switch Clutch
35 17021008	Screw Tap Hex #10-24unc X 1/2
36 130890	Bracket Switch Interlock
37 17021008	Screw Tap Hex #10-24unc X 1/2
39 11150400	Washer Lock Internal Tooth 1/4
40 19131416	Washer 13/32 x 7/8 x 16 Ga.
45 123198X	Nut Plastic Locking Wng 1/4-20
46 102476X	Guard Terminal Blk
47 72240460	Bolt Rdhd Sqnk 1/4-20 X 7-1/2
48 9433R	Ammeter Round 15 AMP
49 131708	Bracket Ammeter 2 242 X 1 180
50 10101000	Washer Lock
51 73911000	Nut
52 19070818	Washer 7/32 X 1/2 X 18 Ga

NOTE: All component dimensions gien in U.S. inches
1 inch = 25.4 mm

REPAIR PARTS

14 HP 42" TRACTOR - - MODEL NUMBER AYP7147A39

CHASSIS AND ENCLOSURES



REPAIR PARTS

14 HP 42" TRACTOR - - MODEL NUMBER AYP7147A39

CHASSIS AND ENCLOSURES

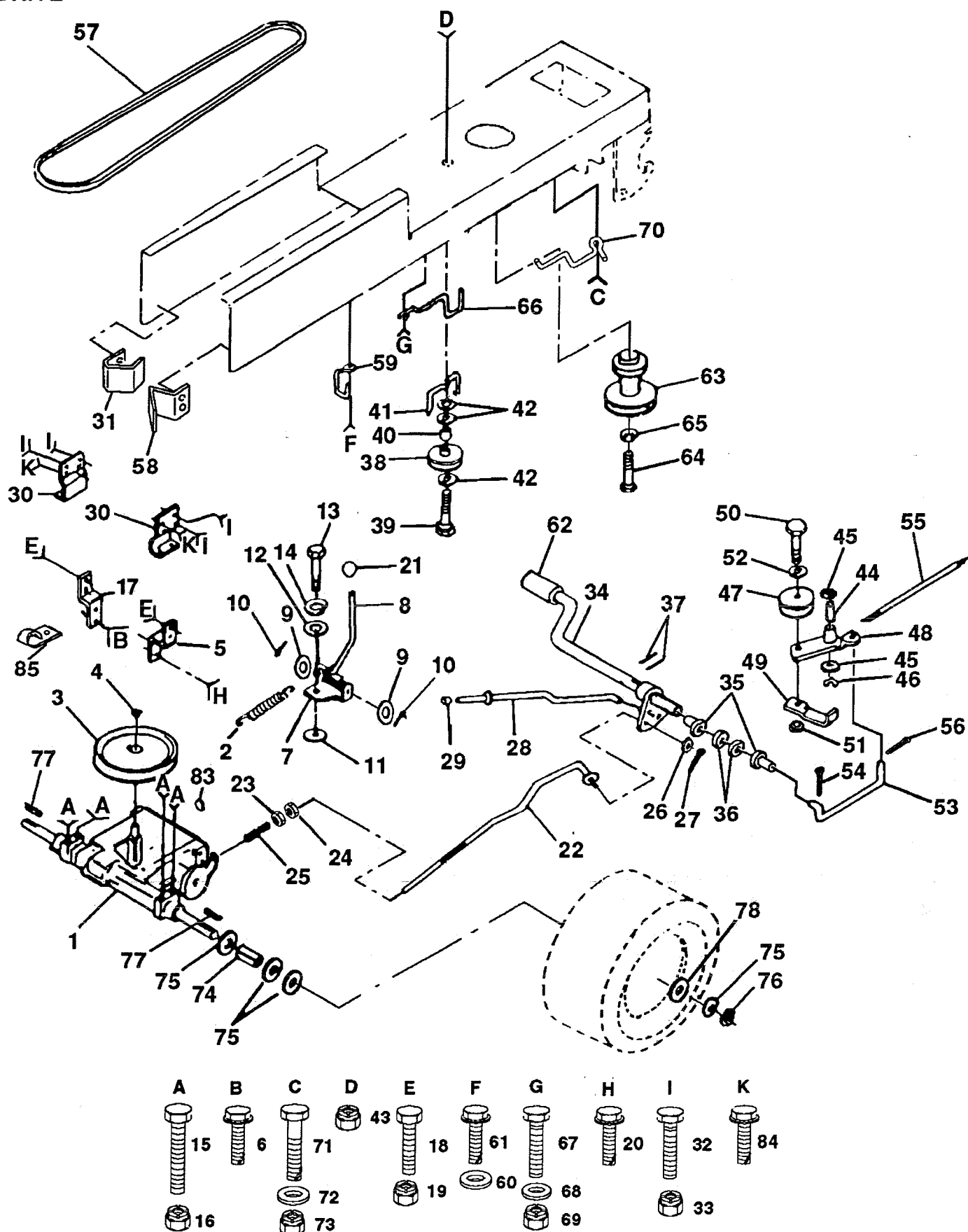
KEY PART NO. NO.	DESCRIPTION	KEY PART NO. NO.	DESCRIPTION
1 135034	Chassis Widmt 11ga 38/42 W/pvt	56 73220400	Nut Fin Hex 1/4-20 Unc
2 137275	Drawbar Stretch	57 7206J	Spacer Split #10 X 3/4 Cad/zin
3 17490612	Screw Thdrol 3/8-16x3/4 Ty-tt	58 19070818	Washer 7/32 X 1/2 X 18 Ga
6 131343X037	Saddle Slkscr 6sp D Sym LT Gn	59 73731000	Nut Keps #10-24 Unc
7 17490608	Screw Thdrol 3/8-16x1/2 Ty-tt	60 74981020	Screw Mach Cr Pan 10-24 X1-1/4
9 124252X	Dash Black Hole"a" 88	66 123198X	Nut Plastic Locking Wng 1/4-20
11 137207	Panel Asm Dash LH Notch	71 124392X417	Bezel Asm. Pnt.
13 132069	Panel Dash RH	72 106395X	Lens Headlight Bar Clear
14 17490612	Screw Thdrol 3/8-16x3/4 Ty-tt	73 17211010	Screw Hex #10-16 X 5/8
15 135040X026	Plate Slkscreened	74 106965X	Plate Support Battery
16 104783	Dash Lower LT	75 104755X	"J" Fastener
17 132635X505	Hood LT/YT/GT Yard Pro Red	76 17490512	Screw Thdrol 5/16-18 X 3/4 TYT
18 74180512	Screw Mach TRHD 5/16-18uncx3/4	77 19131210	Washer 13/32 X 3/4 X 10 Ga
19 19111116	Washer 11/32 X 11/16 X 16 Ga	78 132644	Bracket Grille Galv
20 73510500	Nut Keps 5/16-18 Unc	79 17490412	Screw Hexwsh Thdrol 1/4-20x3/4
21 74760620	Bolt Fin Hex 3/8-16unc X 1-1/4	80 19091016	Washer 9/32 X 5/8 X 16 Ga
22 19131616	Washer 13/32 X 1 X 16 Ga	84 19091216	Washer 9/32 X 3/4 X 16 Ga
23 73680600	Nut Crownlock 3/8-16 Unc	85 74760512	Bolt Hex Hd 5/16-18unc X 3/4
24 124130X	Support Dash	87 73510500	Nut Keps 5/16-18 Unc
25 10040400	Washer Lock Hvy Helical 1/4	88 74760620	Bolt Fin Hex 3/8-16unc X 1-1/4
26 73220400	Nut Fin Hex 1/4-20 Unc	91 74760612	Bolt Fin Hex 3/8-16unc X 3/4
27 74180512	Screw Mach TRHD 5/16-18uncx3/4	92 73680600	Nut Crownlock 3/8-16 Unc
28 131716	Grille Asm Weldment	93 11050600	Washer Lock Ext Tooth 3/8
29 109872X505	Fender Pnt LT W/o Shift(red)	94 74760612	Bolt Fin Hex 3/8-16unc X 3/4
31 136619	Bracket Fender Repl 109873x	95 19131312	Washer 13/32 X 13/16 X 12 Ga
32 17490612	Screw Thdrol 3/8-16x3/4 Ty-tt	96 73680600	Nut Crownlock 3/8-16 Unc
33 105465X505	Footrest Pnt LH Ms-505	97 17490608	Screw Thdrol 3/8-16x1/2 Ty-tt
34 105464X505	Footrest Pnt RH Ms-505	98 17490612	Screw Thdrol 3/8-16x3/4 Ty-tt
35 72110606	Bolt Rdhd Sht Sqnk 3/8-16 X3/4	100 2751R	Clip Line Fuel 13/32 Mtg Hole
36 73680600	Nut Crownlock 3/8-16 Unc	103 9151R	Bushing Snap Blk Nyl 75 Id
37 133671	Pad Footrest Ribbed LT/YT/GT	104 110436X	Bushing Snap Split Blk
38 105419X418	Strap Pnt Grille Ms-418	105 72140608	Bolt Rdhd Sqnk 3/8-16unc X1
39 73510500	Nut Keps 5/16-18 Unc	106 134775	Bracket Asm Pvt42 RH MWR Rear
41 106784X	Strap Asm Hinge Rear	107 134774	Bracket Asm Pvt42 LH MWR Rear
42 104618X	Strap Asm Hinge Front	108 135029	Guard Muffler Bzp
43 73510400	Nut Keps Hex 1/4-20 Unc	109 72110608	Bolt Rdhd Sqnk 3/8-16 X 1 Gr 5
44 109808X	Latch Chute Blk	110 17490616	Screw Thdrol 3/8-16 X 1 Ty-tt
45 74191008	Screw Mach Cr Pan #10-24 X 1/2	111 74760614	Bolt Fin Hex 3/8-16unc X 7/8
46 10071000	Washer Lock #10	112 72140608	Bolt Rdhd Sqnk 3/8-16unc X 1
47 2029J	Nut Weld .327/.304 #10-24	113 73800600	Nut Lock Hex W/wsh 3/8-16unc
48 123481X	Bolt Shoulder 1/4-20 Unc	114 126471X	Clip
49 73680400	Nut Crownlock 1/4-20 Unc		
53 137655X418	Panel Side RH LT Yp Ms418 Gray		
54 132637X418	Panel Side LH LT Yp Ms418 Gray		
55 19091216	Washer 9/32 X 3/4 X 16 Ga		

NOTE: All component dimensions given in U.S. inches
1 inch = 25.4 mm

REPAIR PARTS

14 HP 42" TRACTOR - - MODEL NUMBER AYP7147A39

DRIVE



REPAIR PARTS

14 HP 42" TRACTOR - - MODEL NUMBER AYP7147A39

IVE

KEY PART NO. NO.

DESCRIPTION

1	- - - - -	Transaxle 6sp Ex-med D4360-55
2	110422X	Spring Return Brake T/a Zinc
3	123667X	Pulley Transaxle 20"tires
4	12000028	Ring Retainer # 5100-62
5	121520X	Strap Torque 30 Degrees
6	17490512	Screw Thdrol 5/16-18 X 3/4 TYT
7	130802	Plate Pnt. Shifter
8	131679	Rod Shift Sdl.
9	19151216	Washer 15/32 X 3/4 X 16 Ga
10	76020416	Pin Cotter 1/8 X 1
11	105701X	Washer Plate Shf 388 Sq Hole
12	19091210	Washer 9/32 X 3/4 X10 Ga.
13	71040412	Bolt Fin Hex 1/4-28unfx3/4 Gr8
14	10040400	Washer Lock Hvy Helical 1/4
15	74760540	Bolt Fin Hex 5/16-18uncx 2-1/2
16	73680500	Nut Crown Lock 5/16-18
17	121520X	Strap Torque 30 Degrees
18	74760612	Bolt Fin Hex 3/8-16unc X 3/4
19	73680600	Nut Crownlock 3/8-16 Unc
20	17490512	Screw Thdrol 5/16-18 X 3/4 TYT
21	106933X	Knob Rd 1/2-13 Plstc Thds Blk
22	130804	Rod Brake Blk Zinc 26 840
23	73800600	Nut Lock Hex W/wsh 3/8-16unc
24	73350600	Nut Hex Jam 3/8-16 Unc
25	106888X	Spring Rod Brake 2 00 Zinc
26	19131316	Washer 13/32 X 13/16 X 16 Ga
27	76020412	Pin Cotter 1/8 X 3/4 Cad
28	133261	Rod Brake Parking 14 500
29	71673	Cap Brake Parking Black
30	130807	Bracket Mtg Transaxle
31	127289	Keeper Belt LH YT 14 Ga
32	74760512	Bolt Hex Hd 5/16-18unc X 3/4
33	73680500	Nut Crown Lock 5/16-18
34	122424X	Shaft Asm Pedal Foot 1 930
35	120183X	Bearing Nylon Blk 629 Id
36	19211616	Washer 21/32 X 1 X 16 Ga
37	1572H	Pin Roll 3/16 X 1"
38	123674X	Pulley Idler Flat
39	74760644	Bolt Fin Hex 3/8-16unc X 2-3/4
40	4470J	Spacer Split 395 X 59 Bzp
41	109070X	Keeper Belt Retainer

KEY PART NO. NO.

DESCRIPTION

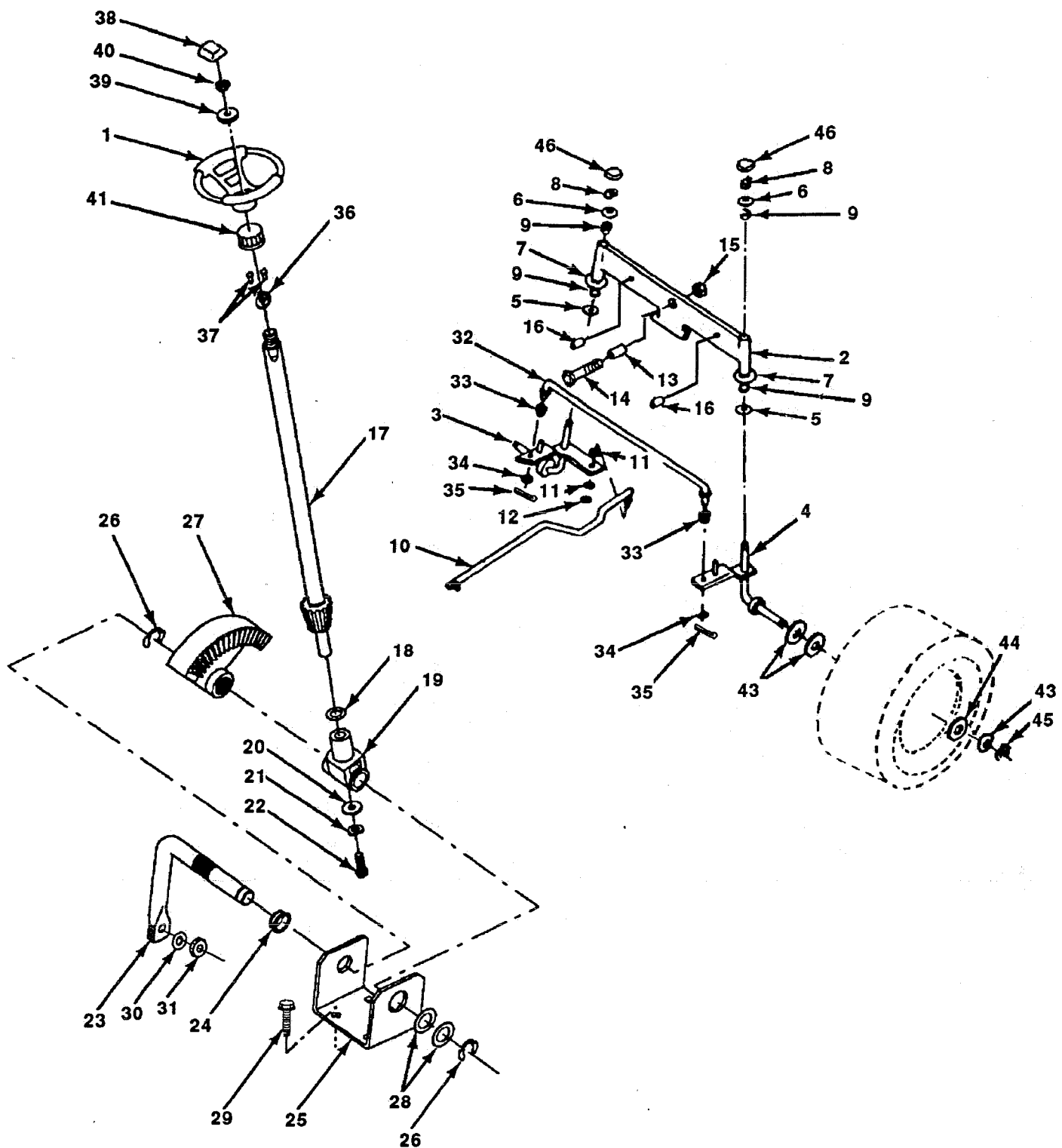
42	19131312	Washer 13/32 X 13/16 X 12 Ga
43	73680600	Nut Crownlock 3/8-16 Unc
44	105706X	Bearing Nyl 503 X 628 X 1 25
45	110812X	Washer Hardened
46	12000039	Ring Klip #t5304-50
47	127783	Pulley Idler V Groove Plastic
48	123789X	Bellcrank Asm Clutch
49	123205X	Retainer Belt Style Spring
50	74760624	Bolt Hex Hd 3/8-16unc X 1-1/2
51	73680600	Nut Crownlock 3/8-16 Unc
52	19131316	Washer 13/32 X 13/16 X 16 Ga
53	105710X	Link Clutch 7 66
54	76020412	Pin Cotter 1/8 X 3/4 Cad
55	105709X	Spring Return Clutch 6 75
56	76020412	Pin Cotter 1/8 X 3/4 Cad
57	131006	V-Belt Gnd Dr 98 25 YT Stretch
58	127290	Keeper Belt RH YT Pnt/zinc 16g
59	136715	Keeper Belt Chassis Span Ctr
60	19131312	Washer 13/32 X 13/16 X 12 Ga
61	17490612	Screw Thdrol 3/8-16x3/4 Ty-tt
62	8883R	Cover Pedal Blk Round
63	134825	Engine Pulley LT/YT
64	71170764	Bolt Hex 7/16-20x4 Gr 5
65	10040700	Washer Lock Hvy Hlcl Spr 7/16
66	129921	Keeper Belt Engine LH LT
67	74760616	Bolt Fin Hex 3/8-16unc X 1
68	19131312	Washer 13/32 X 13/16 X 12 Ga
69	73680600	Nut Crownlock 3/8-16 Unc
70	134683	Guide Belt Mower Drive RH
71	74760616	Bolt Fin Hex 3/8-16unc X 1
72	19132012	Washer 13/32 X 1-1/4 X 12 Ga
73	73680600	Nut Crownlock 3/8-16 Unc
74	109502X	Spacer Split 80x1 94 Cad/zinc
75	121749X	Washer 25/32 X 1 1/4 X 16 Ga
76	12000001	E-ring #5133-75
77	123583X	Key Square 2 0 X 1845/ 1865
78	121748X	Washer 25/32 X 1-5/8 X 16 Ga
83	2228M	Key Woodruff #9 3/16 X 3/4
84	17490612	Screw Thdrol 3/8-16 x 3/4 Ty-tt
85	2751R	Clip Line Fuel 13/32 Mtg Hole

NOTE: All component dimensions given in U.S. inches
1 inch = 25.4 mm

REPAIR PARTS

14 HP 42" TRACTOR - - MODEL NUMBER AYP7147A39

STEERING ASSEMBLY



REPAIR PARTS

14 HP 42" TRACTOR - - MODEL NUMBER AYP7147A39

STEERING ASSEMBLY

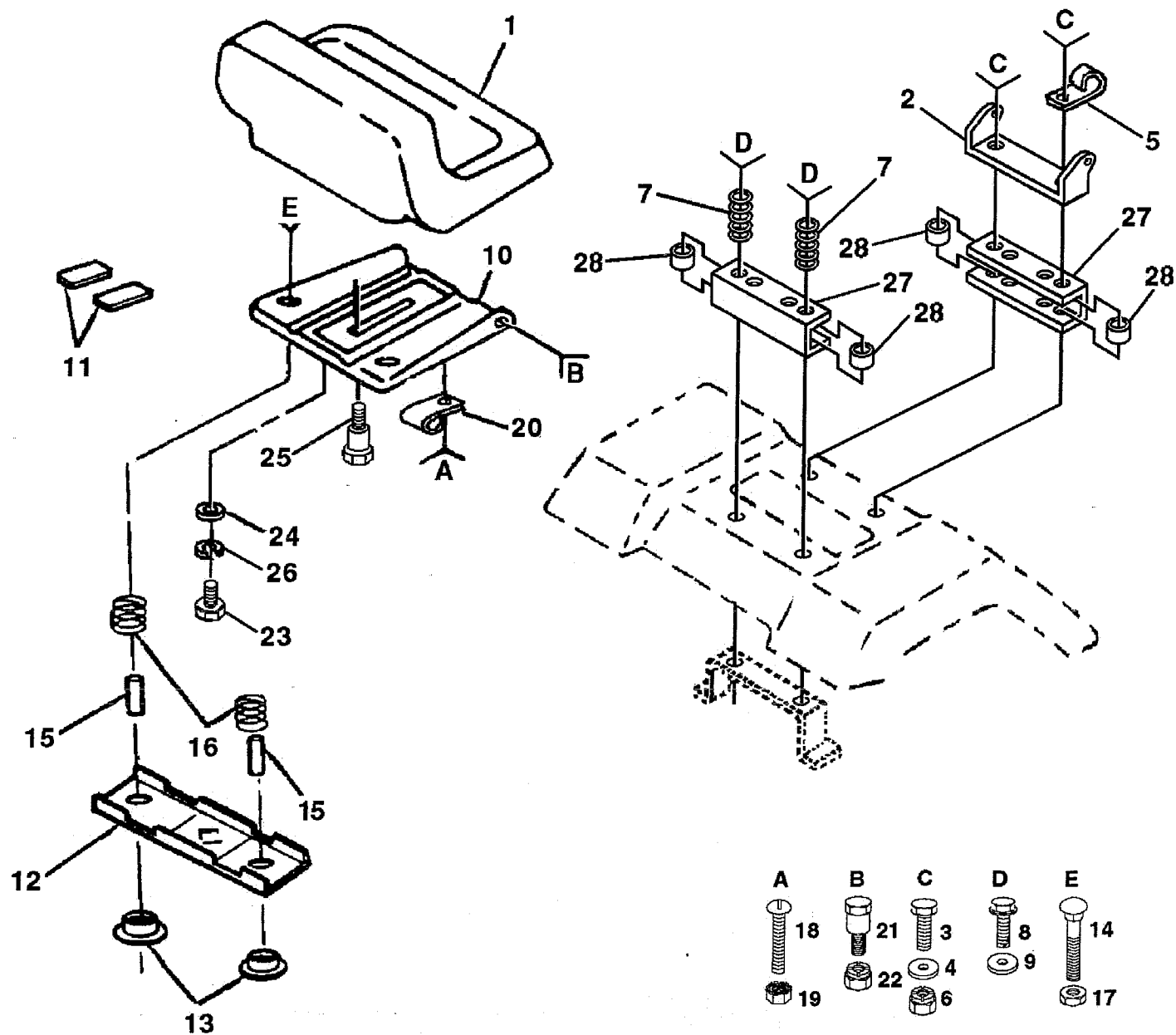
KEY NO.	PART NO.	DESCRIPTION
1	133741	Wheel Steering Ayp/kelch Blk
2	133988	Axle Asm Fr LT W/gzks 38/42
3	135227	Spindle Asm LH
4	135228	Spindle Asm RH
5	6266H	Bearing Race Thrust Harden
6	121748X	Washer 25/32 X 1-5/8 X 13 Ga
7	19272016	Washer 27/32 X 1-1/4 X 16 Ga
8	12000029	Ring Klip #t5304-75
9	3366R	Bearing Col Strg Blk
10	130468	Link Drag Sol Ball Jt 20 064
11	10040600	Washer Lock Hvy Hlcl Spr 3/8
12	73610600	Nut Fin Hex 3/8-24 Unf
13	110438X	Spacer Bearing Axle Front
14	74011056	Bolt Hex 5/8-11 Unc X 3-1/2
15	73901000	Nut Lock Flange 5/8-11 Unc
16	132624	Pin Axle 5/8 X 1 55/1 54 Lg
17	128758	Shaft Asm Strg 18 31x3/4 Yp LT
18	57079	Washer Thrust 515x 750x 033
19	124035X	Support Shaft
20	126684X	Washer Shim 1/4 X 5/8 X 062
21	10040400	Washer Lock Hvy Helical 1/4
22	71070410	Screw Hex Socket 1/4-20 X 5/8
23	127501	Shaft Asm Pittman
24	109816X	Nyliner Snap In
25	124036X	Bracket Steering
26	12000029	Ring Klip #t5304-75
27	136874	Gear Sector 22 Teeth
28	6266H	Bearing Race Thrust Harden
29	17490612	Screw Thdrol 3/8-16x3/4 Ty-tt
30	10040600	Washer Lock Hvy Hlcl Spr 3/8
31	73610600	Nut Fin Hex 3/8-24 Unf
32	130465	Rod Tie Wire Form 19 75 Mech
33	126847X	Bushing Link Drag Blk LR
34	19131416	Washer 13/32 X 7/8 X 16 Ga
35	76020412	Pin Cotter 1/8 X 3/4 Cad
36	1554J	Bushing Strg Blk 742/747 Id
37	17431008	Screw Slftp #10-16 X 1/2 Ty-b
38	133742	Cap Wheel Steer Ayp/kelch Blk
39	100712K	Washer 53 X 2 25 X 160 Zinc
40	73940800	Nut Hex Jam Toplock 1/2-20 Unf
41	100711L	Adapter Wheel Strg 758/ 753id
43	121749X	Washer 25/32 X 1 1/4 X 16 Ga
44	121748X	Washer 25/32 X 1-5/8 X 16 Ga
45	12000029	Ring Klip #t5304-75
46	121232X	Cap Spindle Fr Top Blk

NOTE: All component dimensions given in U.S. inches
1 inch = 25.4 mm

REPAIR PARTS

14 HP 42" TRACTOR - - MODEL NUMBER AYP7147A39

SEAT ASSEMBLY



KEY NO.	PART NO.	DESCRIPTION
1	127427	Seat V350 Blk/blk Std
2	126656X	Bracket Pivot Seat 8 720
3	74760640	Bolt Hex Fin 3/8-16unc X 2-1/2
4	19131610	Washer 13/32 X 1 X 10 Ga
5	2751R	Clip Line Fuel 13/32 Mtg Hole
6	73680600	Nut Crownlock 3/8-16 Unc
7	124181X	Spring Seat Cprsn 2 250 Blk Zi
8	17490640	Screw Hwsh Thdrol 3/8-16x2-1/2
9	19131614	Washer 13/32 X 1 X 14 Ga
10	131451	Pan Seat
11	121251X	Strip Foam Gray Or Black
12	121246X	Bracket Mounting Switch
13	121248X	Bushing Snap Blk Nyl 50 Id
14	72050411	Bolt Rdhd Sht Nk 1/4-20x1-3/8
15	134300	Spacer Split 28x 96 Yel Zinc

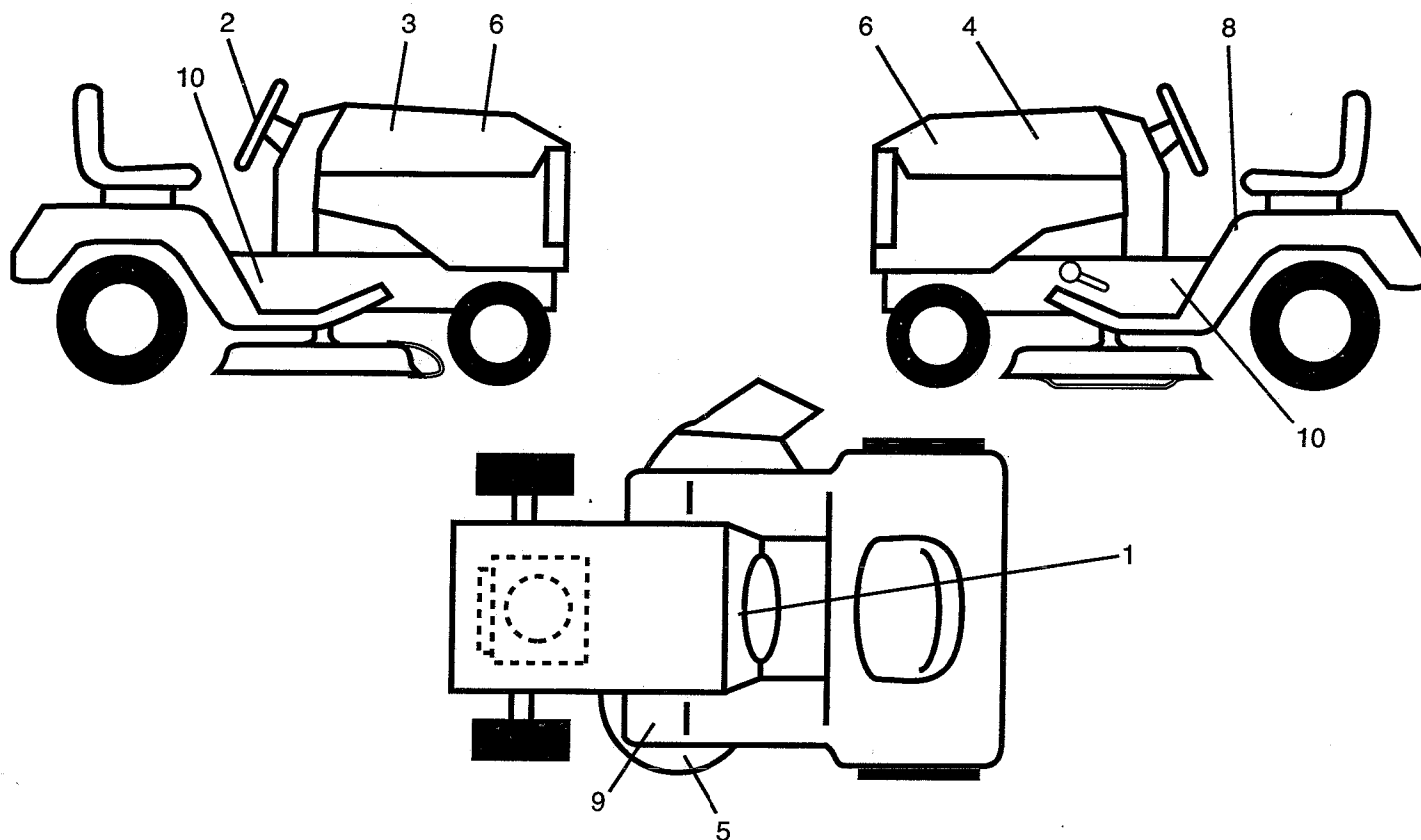
KEY NO.	PART NO.	DESCRIPTION
16	121250X	Spring Cprsn 1 27 Blk Pnt
17	123976X	Nut Lock 1/4 Lge Flg Gr 5 Zinc
18	74641008	Screw SLTD Pan Hd #10-32 X 1/2
19	73951000	Nut Keps #10-32 Unf
20	4171R	Clip Insulated 11/32 Mtg Hole
21	105529X	Bolt Shoulder 5/16-18 Unc Blkz
22	73680500	Nut Crown Lock 5/16-18
23	74780814	Bolt Fin Hex 1/2-13 X 7/8 Gr 5
24	19171912	Washer 17/32 X 1-3/16 X 12 Ga
25	127018X	Bolt Shoulder 5/16-18 X 62
26	10040800	Washer Lock Hvy Hlcl Spr 1/2
27	131772	Spacer Seat
28	131771	Spacer Split

NOTE: All component dimensions given in U.S. inches
1 inch = 25.4 mm

REPAIR PARTS

14 HP 42" TRACTOR - - MODEL NUMBER AYP7147A39

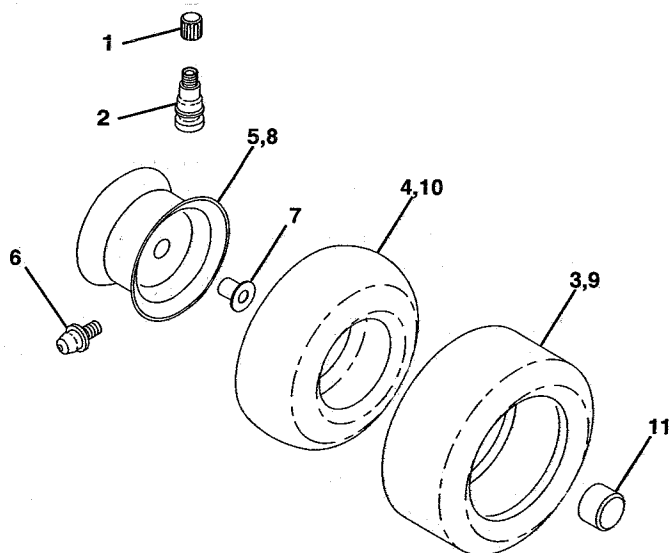
SEAT ASSEMBLY



KEY NO.	PART NO.	DESCRIPTION
1	136794	Decal Instruction Dash English
2	133870	Decal Steering Wheel Insert
3	133868	Decal Hood RH
4	133869	Decal Hood LH
5	138495	Decal Deck Mulching Wizard

KEY NO.	PART NO.	DESCRIPTION
6	133780	Name Plate Hood Wizard Large
8	133796	Decal Caution Fender English
9	4900J	Decal Clutch/brake English
10	134216	Decal Chassis 14HP 42"6sp
-	138311	Decal Handle Lft Height Adjust
-	138456	Manual Owners Ayp7147a39 Eng

WHEELS AND TIRES



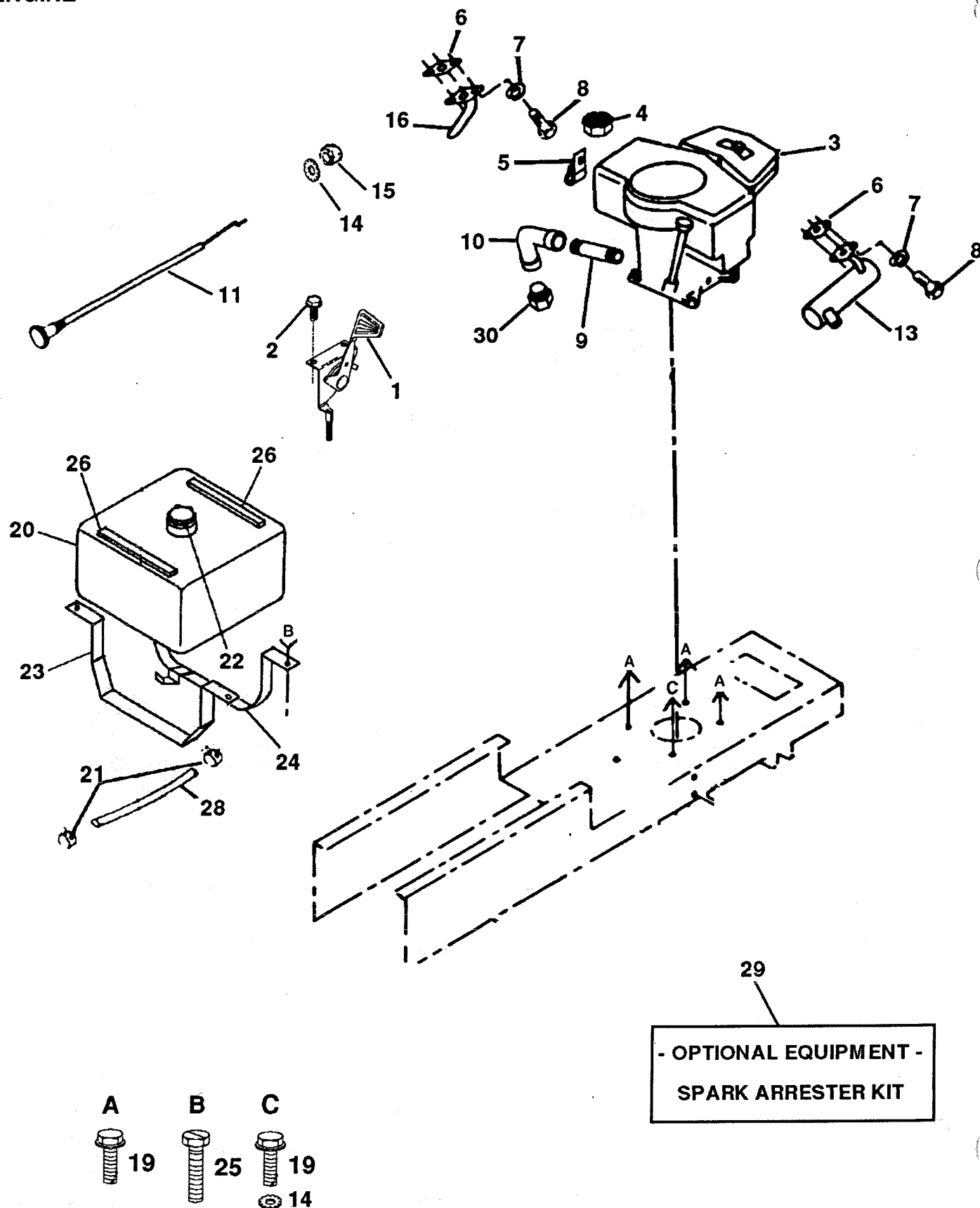
KEY NO.	PART NO.	DESCRIPTION
1	59192	Cap Valve Tire
2	65139	Stem Valve
3	106222X	Tire F Ts 15 X 6 0 - 6 Service
4	59904	Tube Front (Service Item only)
5	106732X311	Rim Asm 6"front White Service
6	278H	Fitting Grease (Front Wheel Only)
7	9040H	Bearing Flange (Front Wheel Only)
8	106108X311	Rim Asm 8"rear White Service
9	106268X	Tire R Ts 10x 9 5-8 C Service
10	7152J	Tube Rear (Service tem Only)
11	104757X	Cap Axle Blk 1 50 X 1 00

NOTE: All component dimensions given in U.S. inches
1 inch = 25.4 mm

REPAIR PARTS

14 HP 42" TRACTOR - - MODEL NUMBER AYP7147A39

ENGINE



REPAIR PARTS

14 HP 42" TRACTOR - - MODEL NUMBER AYP7147A39

ENGINE

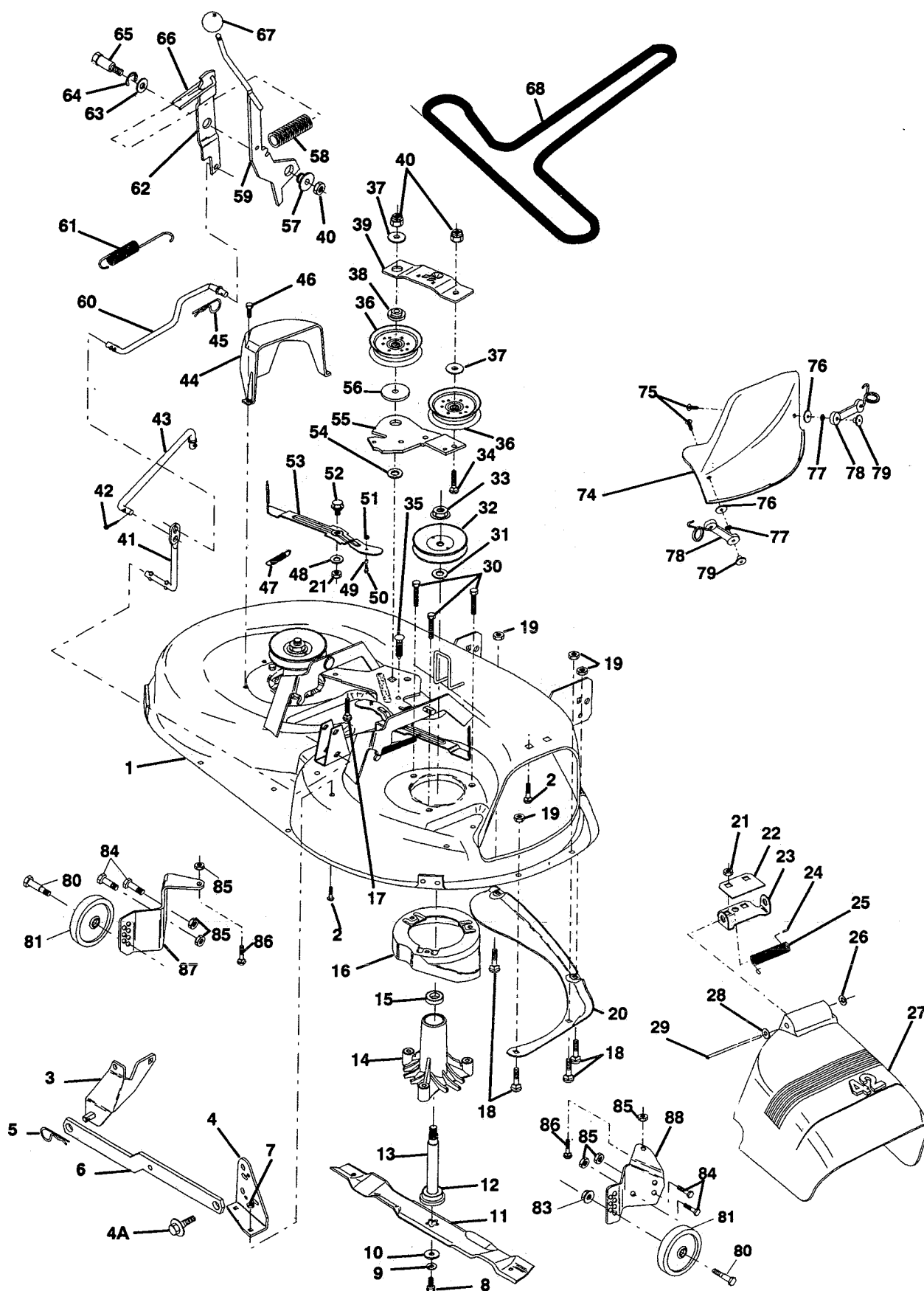
KEY NO.	PART NO.	DESCRIPTION
1	132747	Control Throt RH Blk Flg 41 60
2	17720410	Screw Hex Thd Cut 1/4-20x5/8 T
3	137893	Engine B&S 14 Opp li N/ic Red
4	73510600	Nut Keps Hex 3/8-16unc
5	2751R	Clip Line Fuel 13/32 Mtg Hole
6	8545J	Gasket Muffler #272250
7	10040400	Washer Lock Hvy Helical 1/4
8	74780412	Bolt Fin Hex 1/4-20unc X 75
9	13280336	Nipple Pipe 4-1/2"
10	13200300	Elbow Std 90 Degree 3/8-18 Npt
11	132781	Control Choke 44 12 Blk W/bend
13	108373X	Muffler Exhaust B&S Opp Dom
14	11050600	Washer Lock Ext Tooth 3/8
15	73610600	Nut Fin Hex 3/8-24 Unf
16	100229L	Tube Exhuast
19	17490620	Screw Thdrol 3/8-16x1-1/4 TYTT
20	127813	Tank Fuel 1 90 Rear Natural
21	123487X	Clamp Hose Blk
22	123549X	Cap Asm Fuel W/sym Vented
23	123803X	Strap Tank Fuel Galv
24	136360	Strap Asm Fr Fuel Tank W/clip
25	17490608	Screw Thdrol 3/8-16x1/2 Ty-tt
26	126564X	Strip Foam
28	8543R	Line Fuel
29	132922	Kit Spark Arrestor 1 50
30	-	Plug Oil Drain (Order From Engine Manufacturer)

NOTE: All component dimensions given in U.S. inches
1 inch = 25.4 mm

REPAIR PARTS

14 HP 42" TRACTOR - - MODEL NUMBER AYP7147A39

42" MOWER DECK



REPAIR PARTS

14 HP 42" TRACTOR - - MODEL NUMBER AYP7147A39

" MOWER DECK

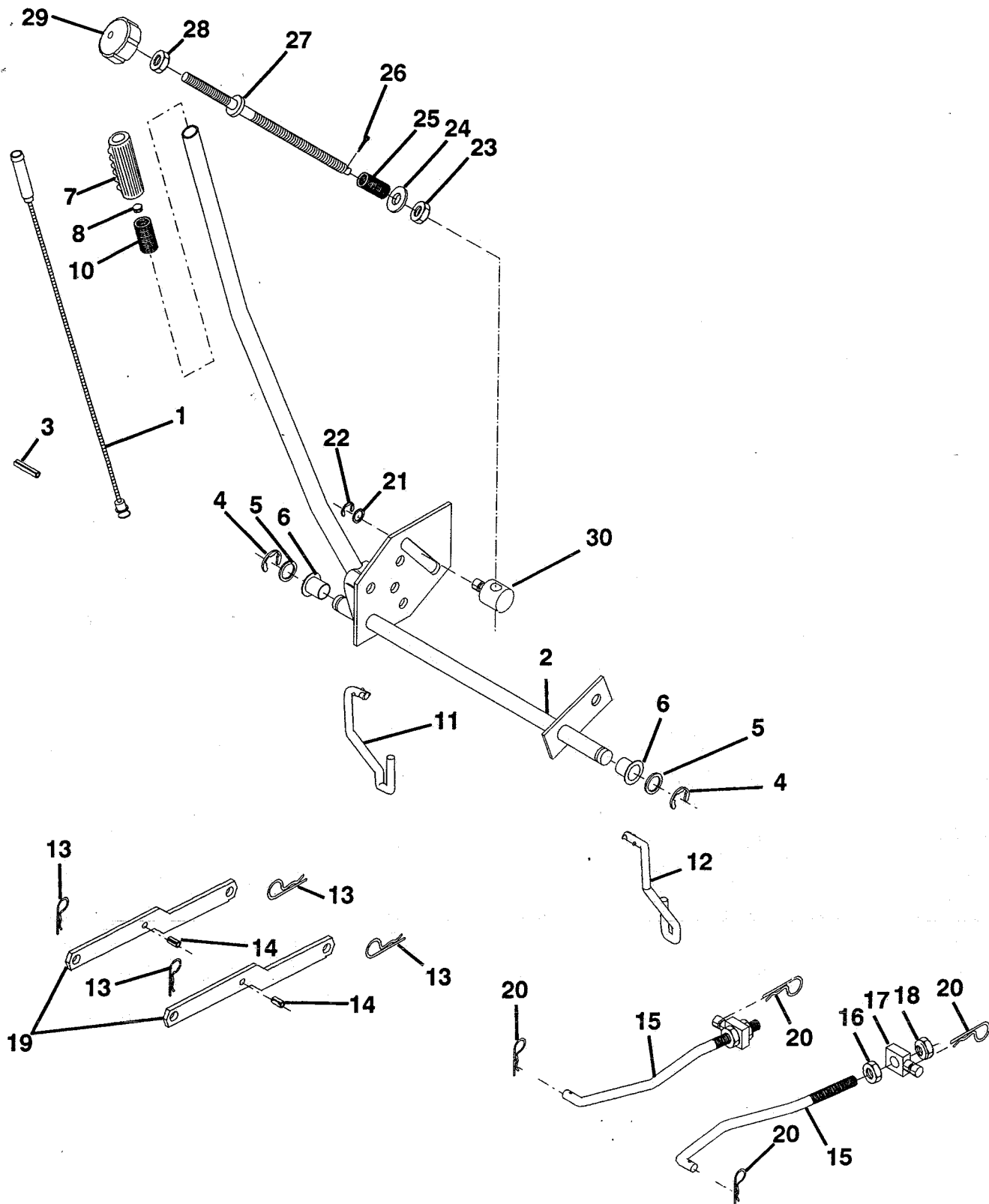
KEY PART NO. NO.	DESCRIPTION	KEY PART NO. NO.	DESCRIPTION
1 138024	Mower Housing	44 134236	Guard Mandrel LH Black
2 72140506	Bolt Rdhd Sqnk 5/16-18unc X3/4	45 4497H	Spring Retainer 1" Zinc/cad
3 138017	Bracket Asm Fr Sway Bar 38/42	46 17720410	Screw Hex Thd Cut 1/4-20x5/8 T
4 138440	Bracket Deck Sway Bar 38/42	47 131335	Spring Extension
4A 132827	Bolt Shoulder 5/16-18 Thd Form	48 133944	Washer Hardened Smaller
5 4939M	Retainer Spring	49 133940	Roller Asm Cam Follower 42"dec
6 130832	Arm Suspension Rear	50 131340	Bolt Shldr 10-24 Zinc Gr 5 42"
7 73800500	Locknut-hex W/ins 5/16-18unc P	51 69180	Nut Lock #10-24 Unc
8 850857	Bolt 3/8-24x1 25 Gr8 Patched	52 105529X	Bolt Shoulder 5/16-18 Unc Blkz
9 10030600	Washer Lock Hvy 3/8 Unplated	53 131845	Arm Asm Pad Brake
10 129962	Washer Hard Blade Mower Vented	54 133943	Washer Hardened
11 134149	Blade Mulching 42"	55 133844	Arm Idler 42"mower LT/YT
12 129895	Bearing Ball #6204 (Mandrel)	56 122052X	Spacer Retainer Pm Mower
13 137645	Shaft Asm W/lower Bearing	57 127498	Bushing 747 Od X 794 Lg Brass
14 128774	Housing Mandrel Vented(machd)	58 128759	Spring Clutch Mower 2 750 Zinc
15 110485X	Bearing Ball Mandrel	59 138003	Lever Asm Clutch Primary Yp
16 136929	Stripper Mower Vented	60 134666	Rod Clutch Primary 38/42
17 72110618	Bolt Rdhd Sqnk 3/8-16 X 2-1/4	61 131870	Spring Return
18 72140505	Bolt Rdhd Sqnk 5/16-18 X 5/8	62 127847	Arm Clutch Secondary
19 73800500	Locknut-hex W/ins 5/16-18unc P	63 121748X	Washer 25/32 X 1-5/8 X 16 Ga
20 136888	Baffle Vortex 42	64 12000029	Ring Klip #t5304-75
21 73680500	Nut Crown Lock 5/16-18	65 128903	Bolt Shoulder 3/8-16 Unc 1 44
22 134753	Stiffener Bracket 42"deck	66 127845	Keeper Spring 4 000
23 131267	Bracket Deflector Mower 42"	67 132044	Cover Handle Round Black 5 25
24 105304X	Cap Sleeve 80x 112 Blk Mower	68 130969	V-Belt Mower 42" 92 40
25 123713X	Spring Torsion Deflector 2 52	74 136420	Cover Mulching 42"black
26 110452X	Nut Push Phos & Oil	75 71161010	Screw
27 130968	Shield Deflector Mower 42" Blk	76 19061216	Washer #10
28 19111016	Washer 11/32 X 5/8 X 16 Ga	77 10071000	Washer Lock #10
29 131491	Rod Hinge 42"6 75 Wlg	78 130758	Latch Asm Bagger
30 78158	Bolt 5/16-18 X 1 25 T/t	79 2029J	Nut Weld
31 129963	Washer Spacer Mower Vented	80 133814	Bolt Shoulder Blk Zinc 42"deck
32 129861	Pulley Mandrel 42"	81 133957	Wheel Gage Donut
33 137266	Nut 9/16top Lock Fling	83 73980600	Nut Crownlock 3/8-16 Unc Blk
34 72110614	Bolt Rdhd 3/8-16uncx1-3/4 Gr5	84 74760512	Bolt Hex Hd 5/16-18unc X 3/4
35 133835	Fastener Christmas Tree	85 73510500	Nut Keps 5/16-18 Unc
36 131494	Pulley Idler Flat 3 060	86 72110504	Bolt Carr 5/16-unc X 1/2
37 19131612	Washer 13/32 X 1 X 12 Ga	87 132263	Bracket Gage Wheel LH 42"deck
38 133502	Spacer Arm Idler Upper Hdn 42"	88 132262	Bracket Gage Wheel RH 42"deck
39 133503	Stiffener Arm Idler Upper 42"	- 130794	Mandrel Asm Service (Includes Key Nos. 8-10, 12-15, 31 and 33)
40 73680600	Nut Crownlock 3/8-16 Unc	- 138357	Deck-Service (Complete, Std. Deck Order separately mulcher blade, mulcher plate and gauge wheel components Key Nos. 11 and 74- 88)
41 133551	Rod Pivot W/nibs		
42 76020312	Pin Cotter 3/32 X 3/4 Cad		
43 133504	Rod Clutch Secondary W/nibs		

NOTE: All component dimensions given in U.S. inches
1 inch = 25.4 mm

REPAIR PARTS

14 HP 42" TRACTOR - - MODEL NUMBER AYP7147A39

LIFT.



REPAIR PARTS

14 HP 42" TRACTOR - - MODEL NUMBER AYP7147A39

IFT

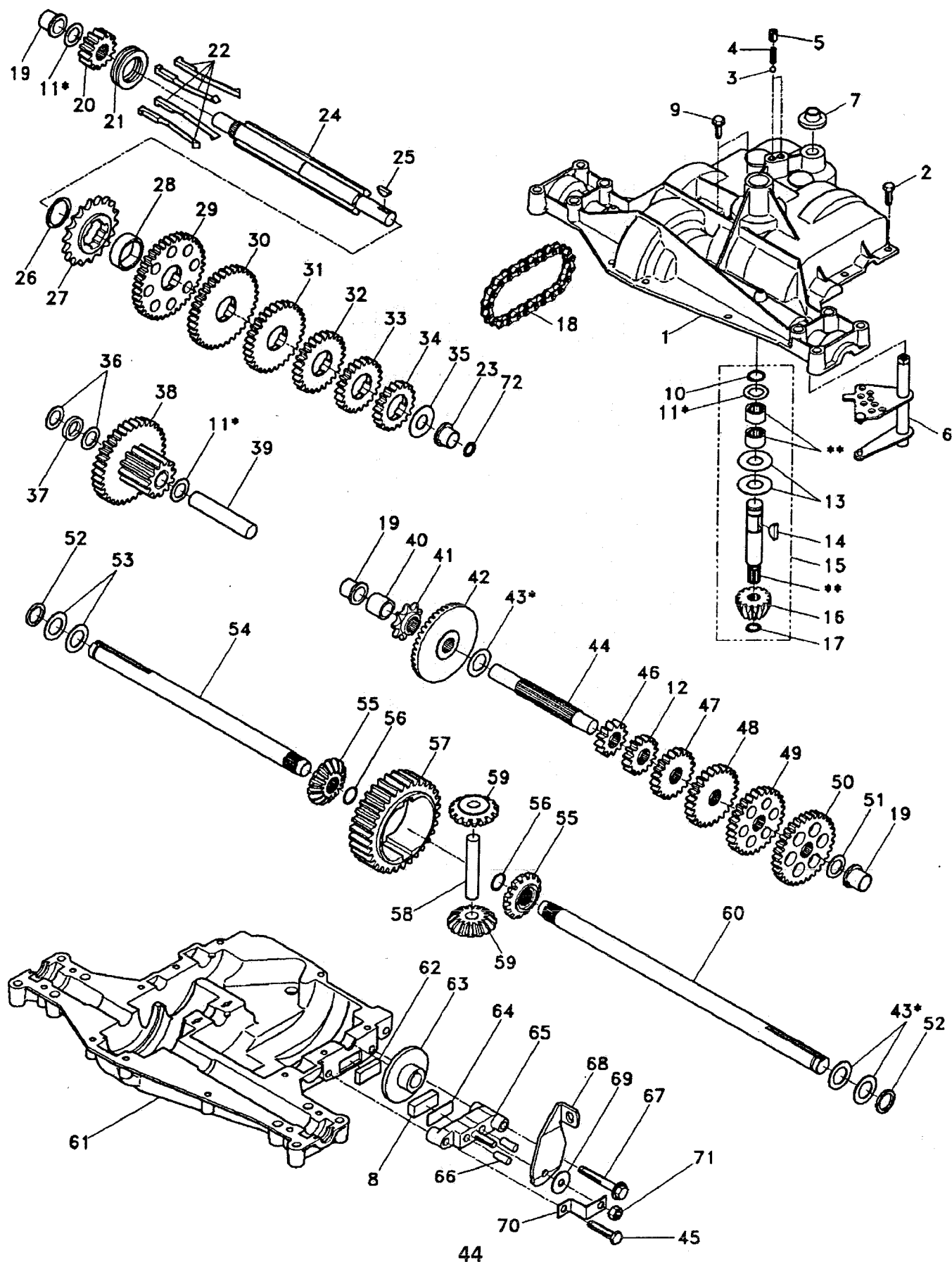
KEY PART NO. NO.	DESCRIPTION
1 136973	Wire Asm Inner W/plunger 17 32
2 137111	Shaft Asm Lift 93 LH Lift
3 138284	Pin Groove
4 12000002	E Ring #5133-62
5 19211416	Washer 21/32 X 7/8 X 16 Ga
6 120183X	Bearing Nylon Blk 629 Id
7 109413X	Grip Handle Bicycle Matte Blk
8 124526X	Button Plunger Black
10 122512X	Spring Cprsn 3 750 Oiled
11 134619	Link Lift LH Fixed Length
12 135388	Link Lift RH Fixed Length
13 4939M	Retainer Spring
14 135563	Pin Roll SLT 5/16 X 1 25 Blk O
15 127218	Link Front
16 73350800	Nut Jam Hex 1/2-13 Unc
17 130171	Trunnion Blk Zinc
18 73800800	Nut Lock W/wsh 1/2-13unc
19 130832	Arm Suspension Rear
20 3146R	Retainer Spring
21 19151216	Washer 15/32 X 3/4 X 16 Ga.
22 12000037	Ring Klip # T5304-37
23 110807X	Nut Special
24 19131016	Washer 13/32 X 5/8 X 16 Ga.
25 2876H	Spring 2-1/8"
26 76020308	Pin Cotter 3/32 X 1/2
27 110729X	Rod Adjust Lift
28 73350600	Nut Hex Jam 3/8 - 16
29 138057	Knob Infinite 3/8 - 16
30 110810X	Trunnion Dp Stop

NOTE: All component dimensions given in U.S. inches
1 inch = 25.4 mm

REPAIR PARTS

14 HP 42" TRACTOR - - MODEL NUMBER AYP7147A39

DANA TRANSAXLE - MODEL NUMBER 4360-55



REPAIR PARTS

14 HP 42" TRACTOR - - MODEL NUMBER AYP7147A39

MANA TRANSAXLE - MODEL NUMBER 4360-55

KEY PART NO. NO.	DESCRIPTION	KEY PART NO. NO.	DESCRIPTION
1 5305	Housing, Upper	41 3645	Sprocket, 9 Teeth
2 1919	Screw, Self-Tapping, Large 1/4-20 x .734	42 3589	Gear, Bevel, 42 Teeth
3 5112	Ball, Detent	43 4691	* Assembly, Kit, Shim .750 Shaft
4 3626	Spring, Detent	44 3882	Shaft, Drive
5 3623	Screw, Set	45 3724	Screw, Self-Tapping, Large 5/16-18 x 1.44
6 4604	Kit, Shifter Assembly	46 3646	Gear, Spur, 12 Teeth
7 5024	Boot, Shifter	47 3866	Gear, Spur, 20 Teeth
8 3907	Puck, Friction	48 3719	Gear, Spur, 25 Teeth
9 5131	Screw, Self-Tapping, with Sealer	49 3868	Gear, Spur, 28 Teeth
10 1099	Ring, Retaining	50 3683	Gear, Spur, 31 Teeth
11 4689	* Assembly, Kit, Shim, .625 Shaft	51 1145	Washer, Plain .632 x 1.00 x .060
12 3707	Gear, Spur, 15 Teeth	52 5130	Washer, Neoprene
13 3876	Washer, Plain .632 x 1.38 x .046	53 3184	Washer, Plain .758 x 1.25 x .031
14 1374	Key, Woodruff, #9	54 3880	Axle, L.H.
15 4171	Assembly, Kit, Input Shaft	55 3871	Gear, Miter, 15 Teeth
16 3725	Pinion, Bevel, 14 Teeth	56 3656	Ring, Retaining
17 3624	Ring, Retaining	57 3839	Gear, Spur, 32 Teeth
18 3625	Chain, 24 Pitches	58 3919	Shaft, Cross
19 1542	Bearing, Flange	59 3726	Gear, Miter, 15 Teeth
20 5280	Gear, Spur, 14 Teeth	60 3881	Axle, R.H.
21 5303	Collar, Clutch	61 5304	Housing, Lower
22 4760	Assembly, Kit, Clutch Keys	62 3920	Puck, Friction
23 5278	Bearing, Flange	63 3276	Disc, Brake
24 5299	Shaft, Intermediate	64 3758	Spacer
25 1375	Key, Woodruff, #61	65 3916	Jaw, Brake
26 3627	Ring, Retaining	66 3843	Pin, Dowel
27 3830	Sprocket, 18 Teeth	67 5120	Screw, Self-Tapping, Large 5/16-18 x 2.25
28 3841	Spacer	68 5285	Lever, Actuating
29 3786	Gear, Spur, 37 Teeth	69 3760	Washer, Plain .321 x 1.00 x .055
30 3785	Gear, Spur, 35 Teeth	70 3917	Bracket, Anti-Rotation
31 3867	Gear, Spur, 30 Teeth	71 3847	Locknut 5/16-24
32 3783	Gear, Spur, 25 Teeth	72 5279	Square Ring
33 3869	Gear, Spur, 22 Teeth	73 4300	Grease
34 5202	Gear, Spur, 19 Teeth		
35 3628	Washer, Plain .640 x 1.37 x .061		
36 1423	Washer, Plain .632 x 1.00 x .026		
37 3422	Spacer .630 x 1.00 x .169		
38 4286	Assembly, Gear, Combination of 12 Teeth and 35 Teeth		
39 3967	Shaft, Idler		
40 3901	Spacer .633 x .87 x .755		

* Use in combinations to maintain proper clearances

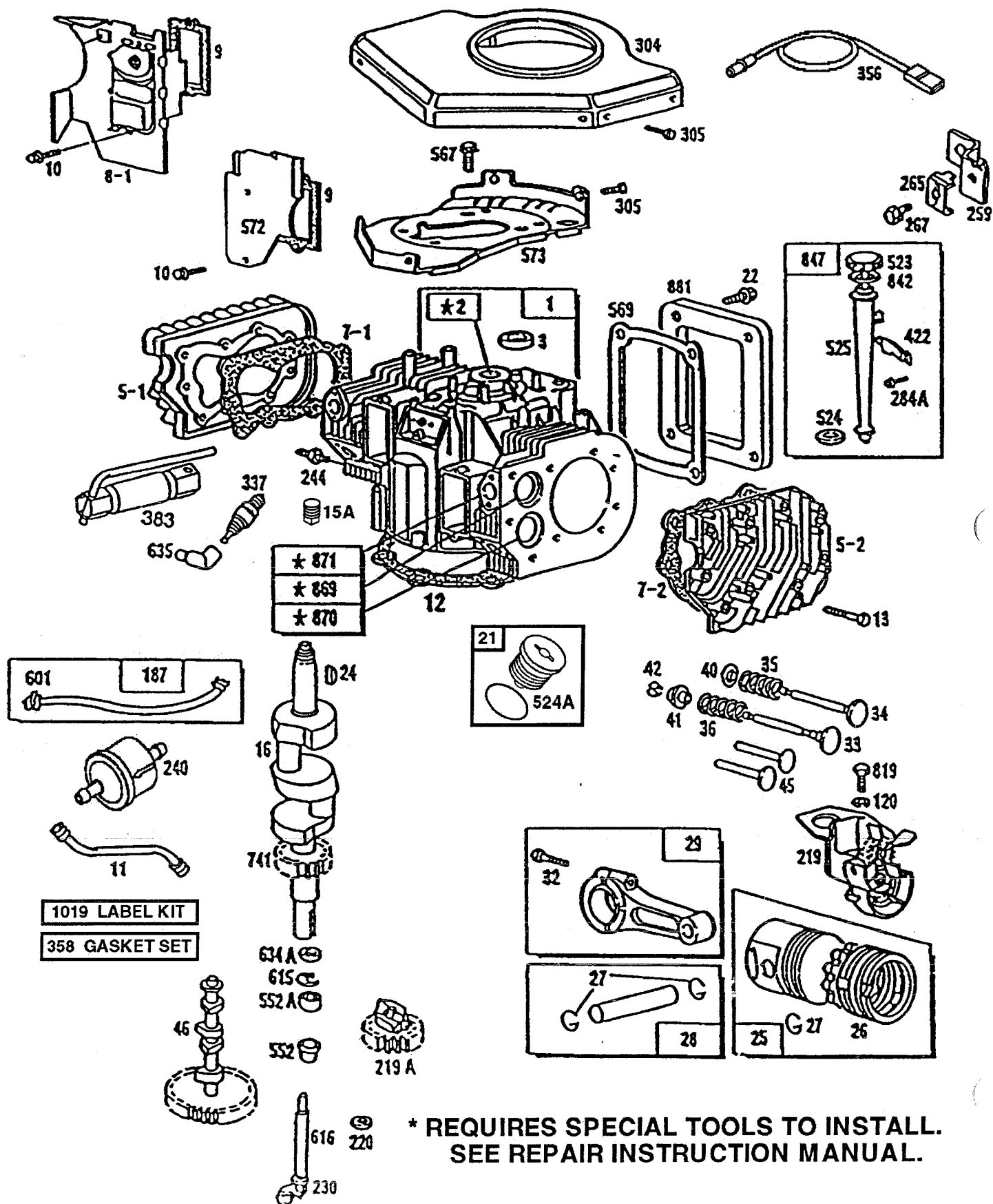
** Order Key No. 15

NOTE: All component dimensions given in U.S. inches
1 inch = 25.4 mm

REPAIR PARTS

14 HP 42" TRACTOR - - MODEL NUMBER AYP7147A39

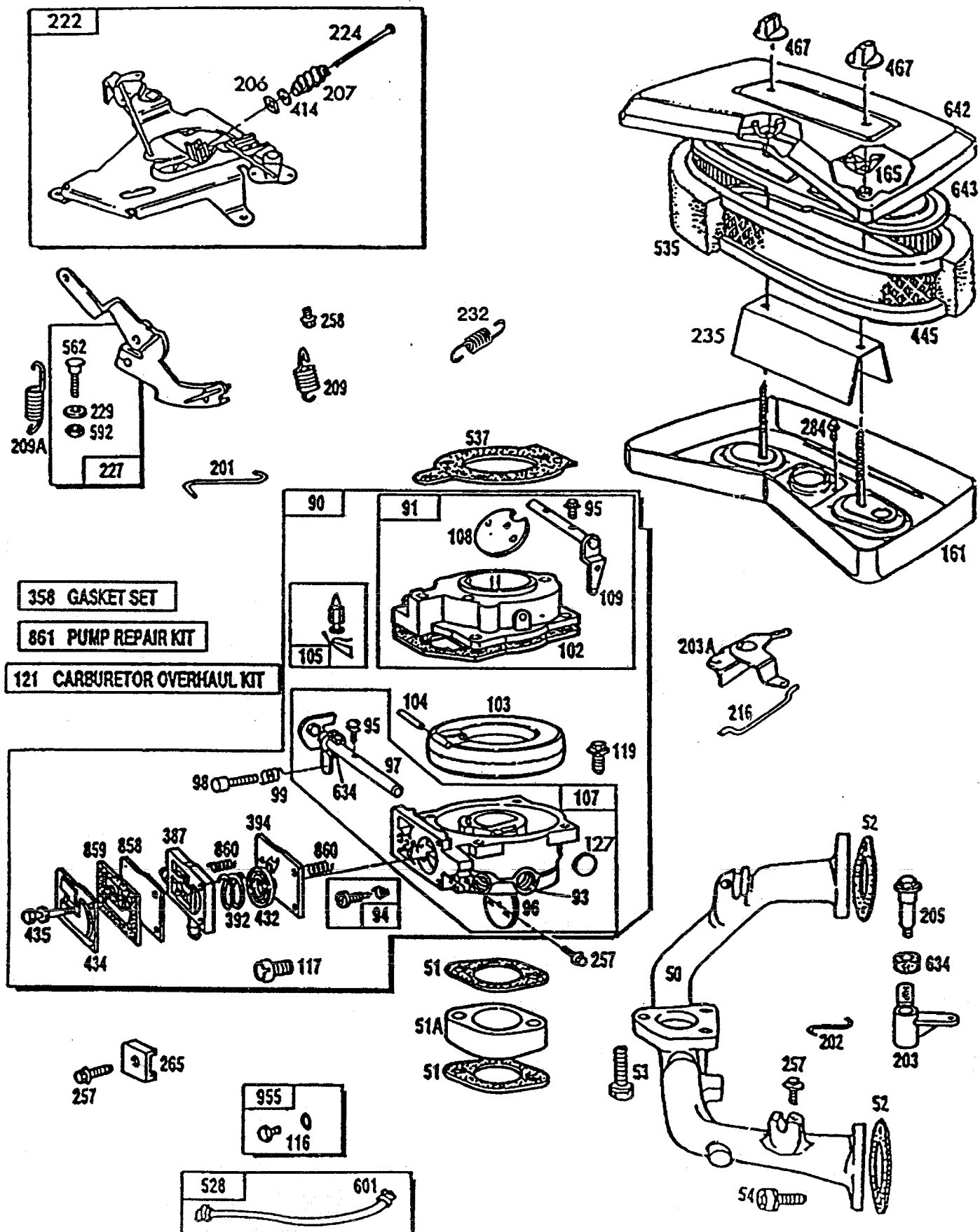
BRIGGS AND STRATTON ENGINE - MODEL NUMBER 400707, TYPE NUMBER 1520-03



REPAIR PARTS

14 HP 42" TRACTOR - - MODEL NUMBER AYP7147A39

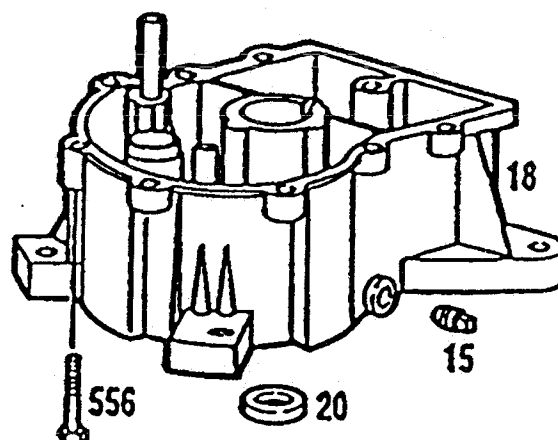
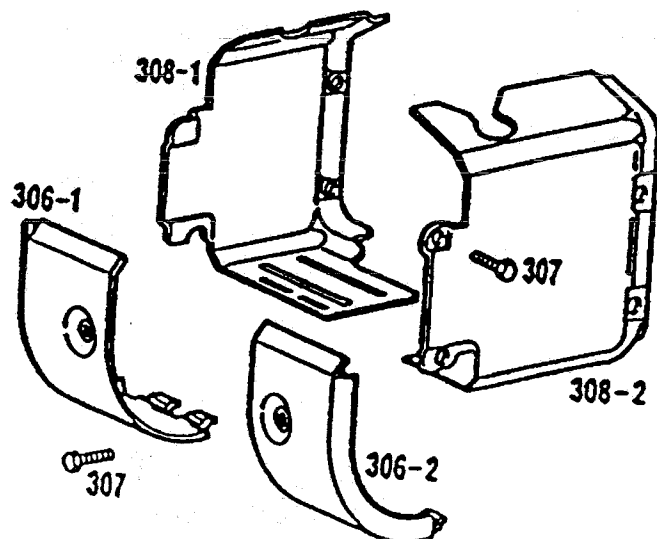
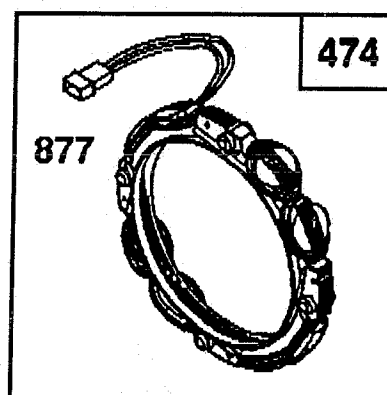
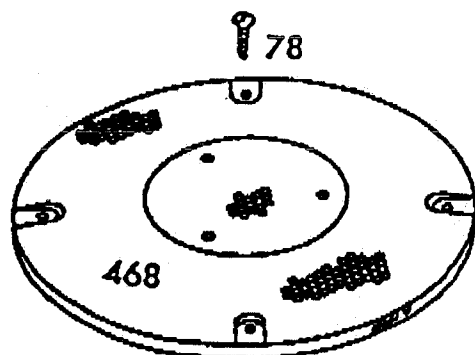
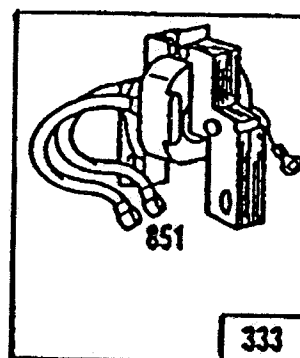
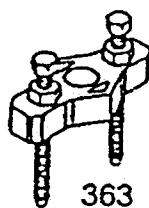
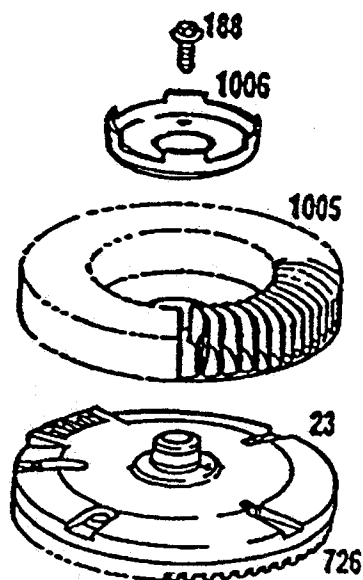
RIGGS AND STRATTON ENGINE - MODEL NUMBER 400707, TYPE NUMBER 1520-03



REPAIR PARTS

14 HP 42" TRACTOR - - MODEL NUMBER AYP7147A39

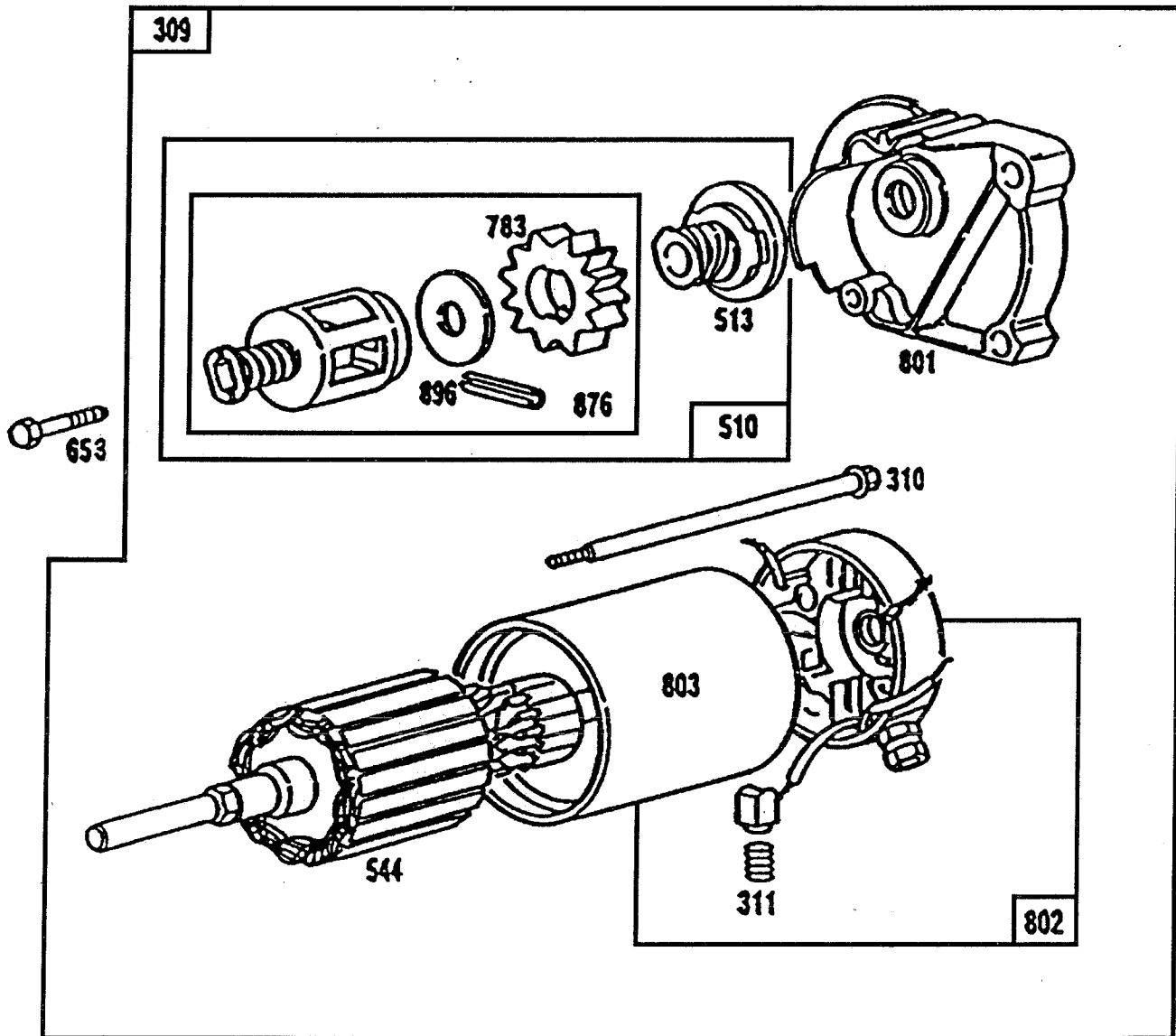
BRIGGS AND STRATTON ENGINE - MODEL NUMBER 400707, TYPE NUMBER 1520-03



REPAIR PARTS

14 HP 42" TRACTOR - - MODEL NUMBER AYP7147A39

RIGGS AND STRATTON ENGINE - MODEL NUMBER 400707, TYPE NUMBER 1520-03



Reference Number		309	310	311	544	801	802	803
Manufacturer		Motor and Drive Ass'y.	Thru Bolt Assembly	Brush Assembly	Armature Assembly	Drive End Cap Assembly	End Cap Ass'y. Commutator	Housing Assembly
Briggs & Stratton	Housing Length							
12V	3-5/8"	394808	94003	395538	390837	394860	395537*	393825

*Includes Brush Set

Reference Number	510	513	783	876	896
Starter Motor Mfr.	Starter Drive Group	Clutch Assembly	Gear	Pinion Spring Kit	Roll Pin
B & S or United Tech.					
12V	490421	398003	280104	490467	94288 (Copper)

REPAIR PARTS

14 HP 42" TRACTOR - - MODEL NUMBER AYP7147A39

BRIGGS AND STRATTON ENGINE - MODEL NUMBER 400707, TYPE NUMBER 1520-03

KEY PART NO. NO.	DESCRIPTION	KEY PART NO. NO.	DESCRIPTION
1 494533	Cylinder Assembly	50 213290	Manifold Assembly, Intake
2 399265	Bearing, Cylinder	51 271412	*** Gasket, Carburetor & Intake Elbow
3 391086	Seal, Oil	51A 280319	Spacer, Carburetor
5-1 493457	Head, Cylinder #1	52 270884	* Gasket, Intake Manifold Mounting
5-2 493458	Head, Cylinder #2	53 93970	Screw, Hex Head (Carburetor to Manifold)
7-1 271867	* Gasket, Cylinder Head #1	54 93208	Screw, Sems, Intake Manifold Mtg.
7-2 271868	* Gasket, Cylinder Head #2	75 222511	Washer, Spring
8-1 495754	Breather Assembly #1	78 94326	Screw, Sems
8-2 222892	Cover, Breather Cylinder #2 (Used only on Key Number 572 Air Baffle with Holes for Mounting)	90 495026	Carburetor Assembly (Remote Choke)
9 27803	* Gasket, Valve Cover	91 494054	Body Assembly, Upper Carburetor
10 94382	Screw, Sems	93 231209	Bushing, Throttle Shaft
11 280225	Tube, Breather	94 491538	** Valve Assembly, Carburetor Idle
12 271142	* Gasket, Crankcase Cover 1/64"	95 93499	Screw, Sems, Throttle and Choke
271188	* Gasket, Crankcase Cover .005"		Valve Mounting
271189	* Gasket, Crankcase Cover .009"	96 223370	Valve, Throttle
13 94565	Screw, Cylinder Head	97 392672	Shaft and Lever, Throttle
15 94239	Plug, Oil Drain	98 91920	Screw, Machine, Fillister Head
15A 94497	Plug, Pipe	99 26157	Spring, Throttle Adjustment
16 393382	Crankshaft	102 271609	** Gasket, Carburetor Body
94196	Key, Timing Gear Retaining Device	103 298514	Float, Carburetor
18 493304	Base Assembly, Crankcase	104 230896	** Pin, Float Hinge
20 291675	Seal, Oil	105 394683	** Valve, Fuel Inlet
21 399195	Seal Assembly, Cylinder Plug	107 491531	Body, Lower Carburetor
22 93882	Screw, Sems	108 223534	Valve, Choke
23 491180	Flywheel and Ring Gear Assembly, Magneto	109 392673	Shaft and Lever, Choke
24 222698	Key, Flywheel	116 280474	O-Ring
25 394955	Piston Assembly, Standard	117 231339	Jet, Needle Valve, Fixed
394956	Piston Assembly .010" Oversize	119 94152	Screw, Sems, Hex Head
394957	Piston Assembly .020" Oversize	120 92290	Washer, Lock
394958	Piston Assembly .030" Oversize	121 491539	Carburetor Overhaul Kit
26 394959	Ring Set, Piston, Standard	127 223472	Plug, Weich
394960	Ring Set, Piston .010" Oversize	161 398826	Body, Air Cleaner
394961	Ring Set, Piston .020" Oversize	165 94289	Nut, Wing
394962	Ring Set, Piston .030" Oversize	187 299146	Line, Fuel, 28" (Cut to Suit)
27 260924	Lock, Piston Pin	188 93535	Screw, Sems
28 299691	Pin Assembly, Piston, Standard	201 262683	Link, Governor
391286	Pin Assembly, Piston .005" Over	202 262684	Link, Throttle
29 393270	Rod Assembly, Connecting	203 280997	Crank, Bell
393714	Connecting Rod, .020" Undersize Crankpin Bore	203A 490207	Crank, Bell
32 94671	Screw, Connecting Rod	205 93971	Screw, Hex Head
33 390419	Valve, Exhaust	206 94298	Nut, Square
34 261528	Valve, Intake	207 262337	Spring, Compression
35 65906	Spring, Intake Valve	209 262352	Spring, Governor
36 26828	Spring, Exhaust Valve	209A 261563	Spring, Governor Idle
40 221596	Retainer, Intake Valve		
41 292260	Rotocoil, Exhaust Valve		
42 93630	Retainer, Exhaust Valve		
	Rotocoil (2)		
45 261368	Tappet, Valve		
46 213421	Gear, Cam		

* Included in Gasket Set (491856)
 ** Included in Carburetor Overhaul Kit (491539)
 *** Included in both Gasket Set (491856) and Carburetor Overhaul Kit (491539)

NOTE: All component dimensions given in U.S. inches
 1 inch = 25.4 mm

REPAIR PARTS

14 HP 42" TRACTOR - - MODEL NUMBER AYP7147A39

RIGGS AND STRATTON ENGINE - MODEL NUMBER 400707, TYPE NUMBER 1520-03

KEY PART NO. NO.	DESCRIPTION	KEY PART NO. NO.	DESCRIPTION
216 262375	Link	524 271157	Seal, Filler Tube
219 393415	Oil Slinger Assembly	524A 271485	Seal, Tube
219A 394348	Gear, Governor	525 280224	Tube, Oil Filler
220 222773	Washer, Thrust	528 393815	Impulse Line and Clamp Assembly
222 491282	Bracket, Speed Control	535 271271	Element, Air Cleaner
224 94297	Screw, Pan Head	537 271411	*** Gasket, Air Cleaner
227 491297	Lever Assembly, Governor	552 262332	Lower Bushing, Governor
229 222289	Washer	552A 262331	Upper Bushing, Governor
230 223882	Washer, Governor Crank (Inside)	556 93585	Screw, Sems, Hex Head
232 262539	Spring, Backlash	562 93853	Bolt, Governor Lever
235 224039	Shield, Spitback	567 93777	Screw, Hex Head
240 493629	Filter, Fuel (In Fuel Line to Tank)		(Back Plate to Cylinder)
244 230318	Connector, Impulse Pump	569 272062	* Gasket, Crankcase
257 93897	Screw, Sems	572 224580	Baffle, Air, Cylinder #2
258 93949	Screw, Sems	573 491304	Back Plate Assembly
259 223890	Bracket, Cable	592 92278	Nut, Hex
265 221535	Clamp, Casing	601 93053	Clamp, Fuel Line
267 93496	Screw, Hex Head	615 94296	Retainer, E-Ring
284 94264	Screw, Hex Head	616 491530	Crank, Governor
284A 93469	Screw, Hex Head	634 271013	** Washer, Throttle Shaft
304 492656	Housing, Blower	634A 491287	Seal, Governor Shaft
305 94608	Screw, Sems 1/2"	635 66538	Elbow, Spark Plug
305 94513	Screw, Sems 3/4"	642 223579	Cover, Air Cleaner
306-1 222846	Shield, Cylinder	643 223714	Cartridge Plate, Air Cleaner
306-2 223734	Shield, Cylinder	653 93585	Screw, Hex Head
307 94386	Screw, Sems	726 391362	Gear, Flywheel Ring
308-1 222848	Cover, Air Guide		(Includes Mounting Parts)
308-2 222849	Cover, Air Guide	741 262694	Gear, Timing
309 ---	Motor, Starting (See Chart for Starting Motor Replacement Parts)	819 93686	Screw, Hex Head
332 230674	Nut, Hex	842 271170	Seal, Oil Filler Cap
333 394891	Armature Group (MAGNETRON™ Ignition)	847 394394	Dipstick and Tube Assembly
334 93381	Screw, Sems, Armature Mounting	851 221798	Terminal, Ignition Cable
337 802592	Plug, Spark, Resistor	858 270989	*** Diaphragm, Damping
356 494705	Wire, Ground	859 271025	*** Gasket, Carburetor Pump
358 491856	Gasket Set	860 261358	*** Spring (2)
363 19203	Puller, Flywheel (Optional Accessory)	861 393397	Repair Kit, Pump
383 89838	Wrench, Spark Plug	869 261463	Seat, Intake Valve, Standard
387 280197	Body, Pump	870 213316	Seat, Exhaust Valve, Standard
392 261395	*** Spring, Pump	871 261961	Guide, Exhaust Valve (Only)
394 270988	*** Diaphragm	231218	Guide, Intake, Brass (See Repair Manual)
414 223882	Washer	877 393456	Connector Assembly
422 222875	Clamp, Oil Filler	881 222860	Cover Plate, Crankcase
432 221377	*** Cap, Spring	955 397882	Plug and Seal, Solenoid
434 223688	Cover, Diaphragm	1005 280815	Fan, Flywheel
435 93829	Screw, Diaphragm Cover	1006 224413	Retainer, Fan
445 394019	Cartridge, Air Cleaner	1019 491260	Label Kit
467 493903	Knob, Air Cleaner		
468 224521	Screen, Flush Rotating	* Included in Gasket Set (491856)	
474 393474	Stator, Alternator	** Included in Carburetor Overhaul Kit (491539)	
482 93621	Screw, Sems	*** Included in both Gasket Set (491856) and Carburetor Overhaul Kit (491539)	
493 494947	Cap and Dipstick, Oil Filler		

NOTE: All component dimensions given in U.S. inches
1 inch = 25.4 mm