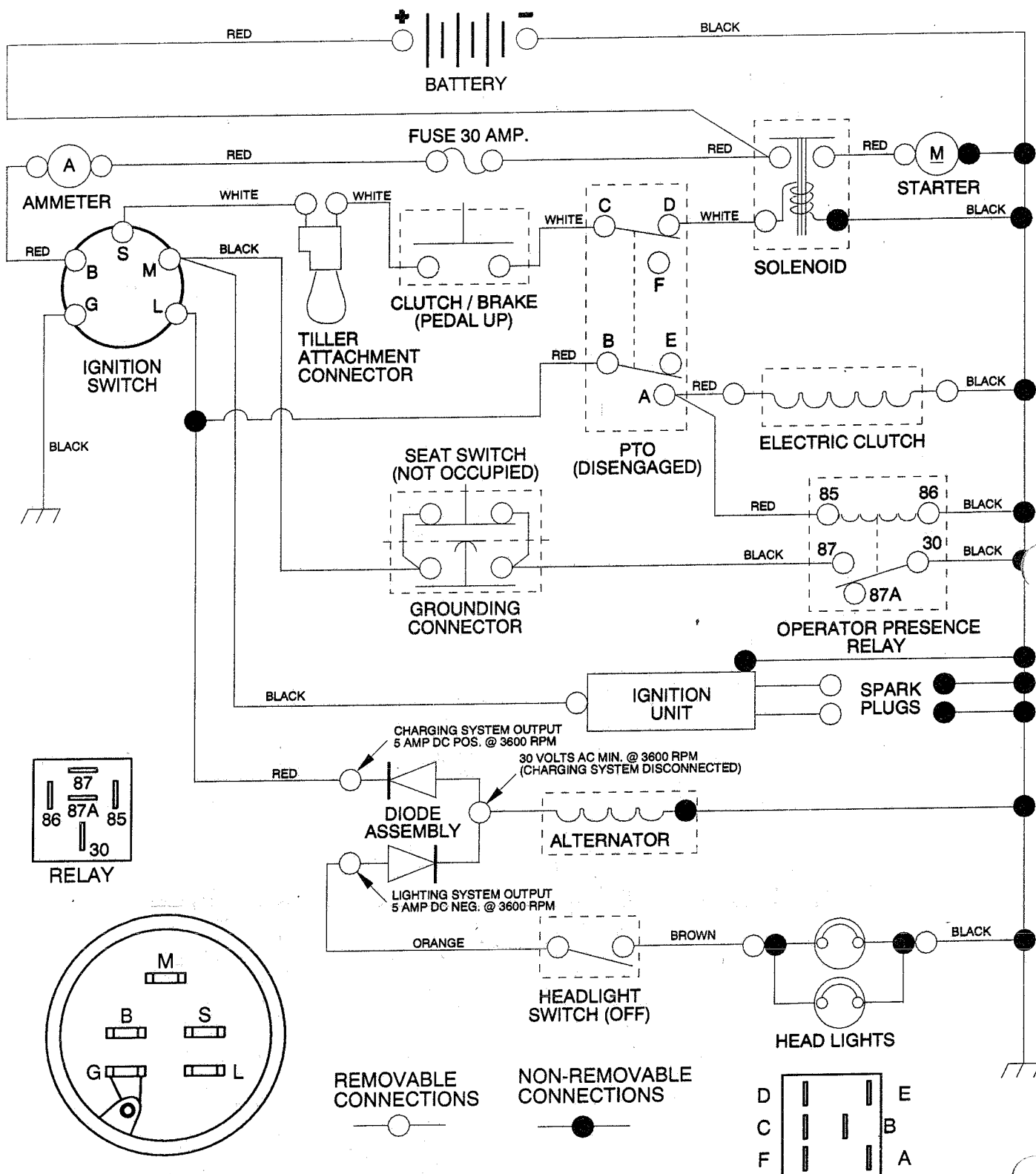


18 HP 44" TRACTOR - - MODEL NUMBER AYP8186A39

SCHEMATIC



IGNITION SWITCH

POSITION	CIRCUIT
OFF	M + G
ON	B + L
START	B + S

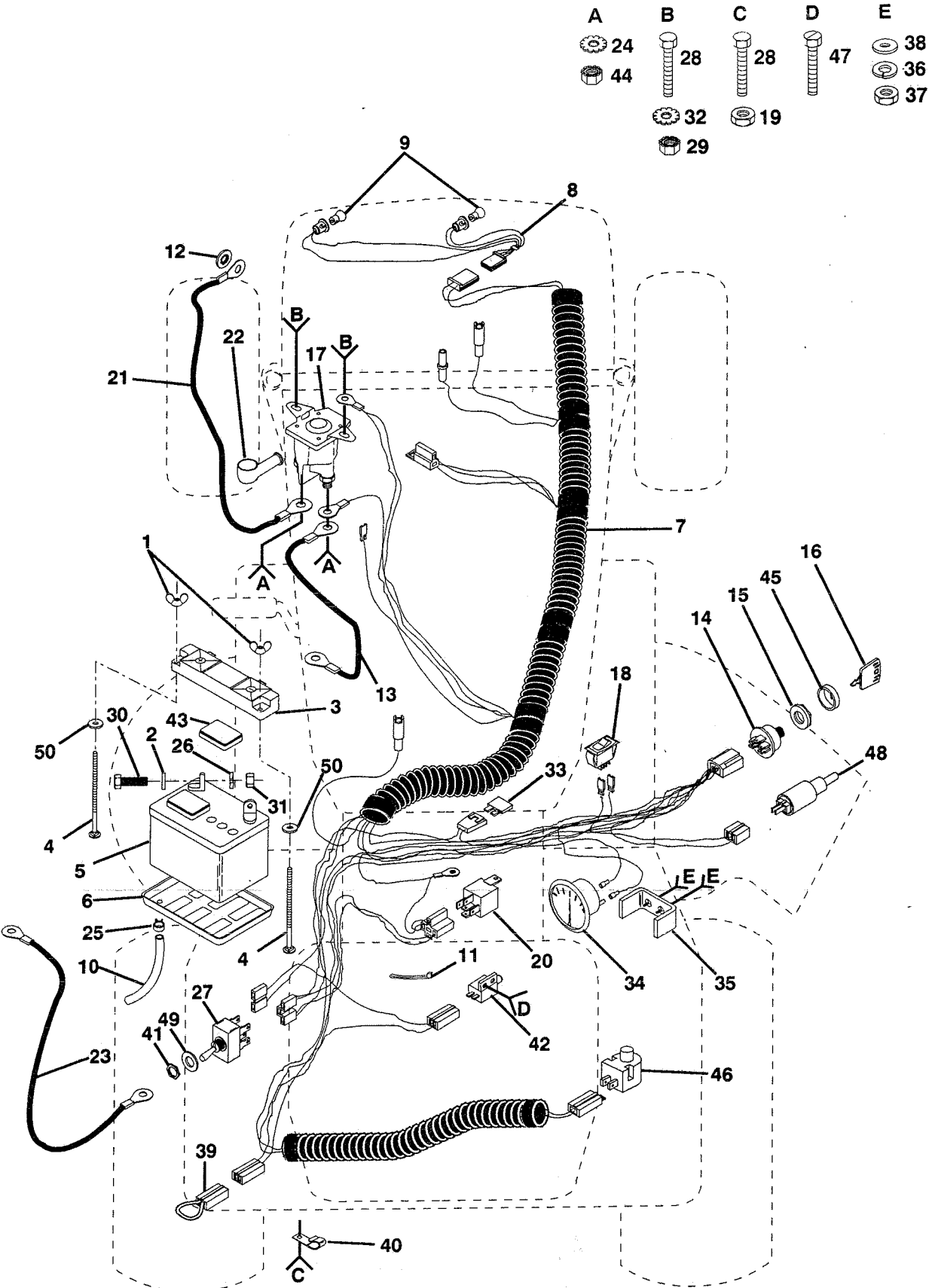
PTO SWITCH

POSITION	CIRCUIT
OFF	B + E, C + D
ON	B + A, C + F

REPAIR PARTS

18 HP 44" TRACTOR - - MODEL NUMBER AYP8186A39

ELECTRICAL



REPAIR PARTS

18 HP 44" TRACTOR - - MODEL NUMBER AYP8186A39

ELECTRICAL

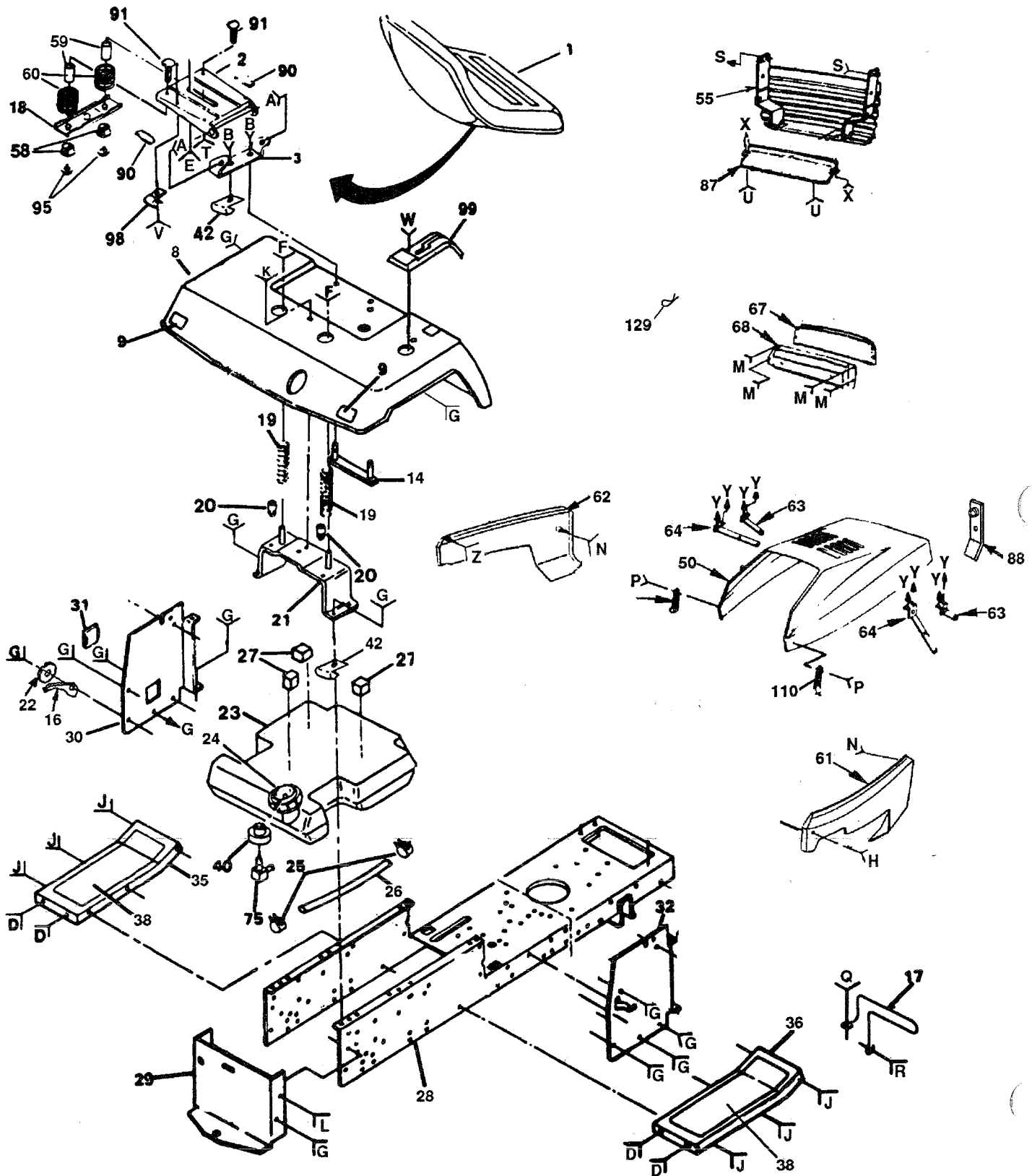
KEY NO.	PART NO.	DESCRIPTION
1	123198X	Wingnut 1/4-20
2	19091016	Washer 9/32 x 5/8 x 16 Ga.
3	102476X	Guard, Terminal
4	72240460	Bolt, Carriage 1/4-20 x 7-1/2
5	121537X	Battery
6	7603J	Tray, Battery
7	138803	Harness, Ignition
8	127441X	Harness, Light Socket
9	7662J	Bulb, Light
10	7697J	Tube, Battery Tray
11	7192J	Cable Tie
12	11150400	Washer, Lock Internal Tooth 1/4
13	4206J	Cable, Battery (Battery to Solenoid)
14	4406R	Switch, Ignition
15	124211X	Nut, Ignition
16	122147X	Key, Molded
17	138406	Solenoid
18	110712X	Switch, Light
19	73680400	Nut, Hex 1/4-20
20	109748X	Relay
21	4799J	Cable, Battery (Solenoid to Starter)
22	131563	Cover, Terminal (For Solenoid)
23	4207J	Cable, Battery (Battery to Ground)
24	10090400	Washer, Lock, External Tooth 1/4
25	109596X	Clamp, Hose
26	10040400	Washer, Lock 1/4
27	126016X	Switch, PTO
28	74780408	Bolt, Hex 1/4-20 x 1/2 Gr. 5
29	73510400	Nut, Keps, Hex 1/4-20
30	74760412	Bolt, Hex 1/4-20 x 3/4
31	73220400	Nut, Hex 1/4-20
32	11050400	Washer, Lock, External Tooth 1/4
33	108824X	Fuse, 30 AMP
34	9433R	Ammeter
35	131708	Bracket, Ammeter
36	10101000	Washer, Lock #10
37	73911000	Nut
38	19070818	Washer 7/32 x 1/2 x 18 Ga.
39	102501X	Loop, Wire
40	235R	Clip, Insulated
41	4022J	Nut, Hex
42	104445X	Switch, Interlock, Clutch
43	121264X	Cap, Battery
44	73350400	Nut, Keps #10-32 UNF
45	123620X	Bezel, Ignition
46	121305X	Switch, Plunger
47	17021008	Screw, Hex, Tapping #10-24 UNC x 1/2 Type T
48	135665	Diode Assembly
49	19171216	Washer 17/32 x 3/4 x 16 Ga.
50	19121618	Washer 3/4 x 1" x 18 Ga.

NOTE: All component dimensions given in U.S. inches.
1 inch = 25.4 mm

REPAIR PARTS

18 HP 44" TRACTOR - - MODEL NUMBER AYP8186A39

CHASSIS AND ENCLOSURES



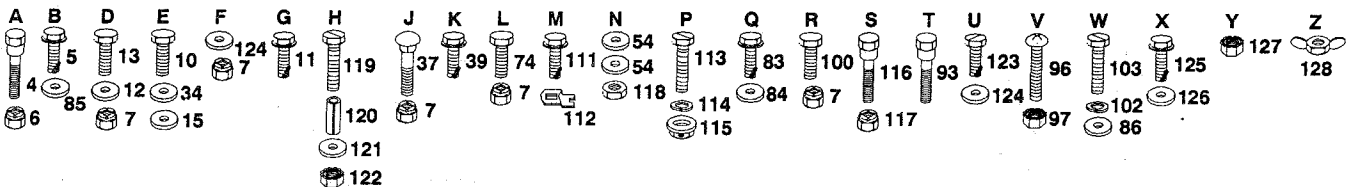
REPAIR PARTS

18 HP 44" TRACTOR - - MODEL NUMBER AYP8186A39

CHASSIS AND ENCLOSURES

KEY NO.	PART NO.	DESCRIPTION	KEY NO.	PART NO.	DESCRIPTION
1	127440	Seat	61	137655X418	Panel, Side, R.H.
2	131451	Pan, Seat	62	132637X418	Panel, Side, L.H.
3	126656X	Bracket, Pivot, Seat	63	104618X	Strap Asm, Hinge, Front
4	105529X	Bolt, Shoulder 5/16 - 18	64	106784X	Strap Asm, Hinge, Rear
5	17490508	Screw, Thrd. Rolling 5/16-18 x 1/2	67	106395X	Lens, Headlight, Bar
6	73680500	Nut, Crownlock 5/16-18	68	124392X417	Bezel, Headlight
7	73680600	Nut, Crownlock 3/8-16	74	74760612	Bolt, Hex 3/8-16 x 3/4
8	123784X505	Fender	75	139277	Stem, Tank, Fuel
9	106202X	Reflector, Rear	83	17490616	Screw 3/8-16 x 1" Thd Rolling
10	74780814	Bolt, Hex 1/2-13 x 7/8 Gr. 5	84	19131616	Washer 13/32 x 1 x 16 Ga.
11	17490612	Screw, Hex Washer Thd. Roll 3/8-16 x 3/4	85	19131614	Washer 13/32 x 1 x 14 Ga.
12	19131312	Washer 13/32 x 13/16 x 12 Ga.	86	19060718	Washer 3/16 x 7/16 x 18 Ga.
13	74760612	Bolt, Hex 3/8-16 x 3/4	87	105419X418	Strap, Grille
14	105511X	Strap, Fender	88	132644	Bracket, Grille
15	19171912	Washer 11/32 x 13/16 x 12 Ga.	90	121251X	Strip, Foam
16	123933X505	Pointer, Height Indicator	91	72050411	Bolt, Carr. 1/4-20 x 1-3/8
17	135029	Guard, Muffler	93	127018X	Shoulder Bolt
18	121246X	Bracket, Switch, Seat	95	123976X	Nut, Hex Large Flange
19	124181X	Compression, Spring, R.H.	96	74641008	Screw, Std. Pan Head #10-24 x 1/4
20	105531X	Nut, Push	97	73951000	Nut, Keps #10-24
21	137113	Bracket, Fender	98	4171R	Clip, Insulated
22	120529X	Washer, Nylon	99	123825X	Console, Shifter
23	127334X	Tank, Fuel	100	72110608	Bolt, Carriage 3/8-16 UNC x 1
24	123549X	Cap, Fuel	102	10100800	Washer, Lock #8
25	123487X	Clamp, Hose	103	74640806	Screw #8 x 3/8
26	8543R	Line, Fuel	110	109808X	Latch, Chute
27	106082X	Pad, Spacer	111	17211010	Screw, Hex, Washer Hd. Tapping
28	127166X	Chassis Assembly	112	104755X	"J" Fastener
29	123785X	Drawbar	113	74191008	Screw, Machine #10-24 x 1/2
30	138644	Panel, Dash, L.H.	114	10071000	Washer, Lock
31	121794X	Cover, Access	115	2029J	Nut, Weld #10-24
32	138643	Panel, Dash, R.H.	116	123481X	Bolt, Shoulder 1/4-20
34	10040800	Lockwasher	117	73680400	Nut, Crownlock 1/4-20
35	105465X505	Footrest, L.H.	118	73220400	Nut, Fin, Hex 1/4-20
36	105464X505	Footrest, R.H.	119	74981020	Screw, Machine #10-24 x 1-1/4
37	72110606	Bolt, Carr. 3/8-16 x 3/4	120	7206J	Spacer, Split
38	133671	Pad, Footrest	121	19070818	Washer 7/32 x 1/2 x 18 Ga.
39	17490608	Screw, Thrd. 3/8-16 x 1/2	122	73731000	Nut, Keps #10-24
40	3645J	Bushing	123	17490512	Screw, Thrd. Rolling 5/16-18 x 3/4
42	2751R	Clip, Insulated	124	19131210	Washer 13/32 x 3/4 x 10 Ga.
43	110436X	Grommet, Split	125	17490412	Screw, Hex, Washer Hd, Thrd. Rolling
50	132635X505	Hood	126	19091016	Washer 9/32 x 5/8 x 16 Ga.
54	19091216	Washer 9/32 x 3/4 x 16 Ga.	127	73510400	Nut, Keps 1/4-20
55	131716	Grill	128	123198X	Nut, Plastic, Locking Wing 1/4-20
58	121248X	Bushing, Snap	129	19211H	Retainer Spring
59	121249X	Spacer, Split			
60	123740X	Spring, Compression			

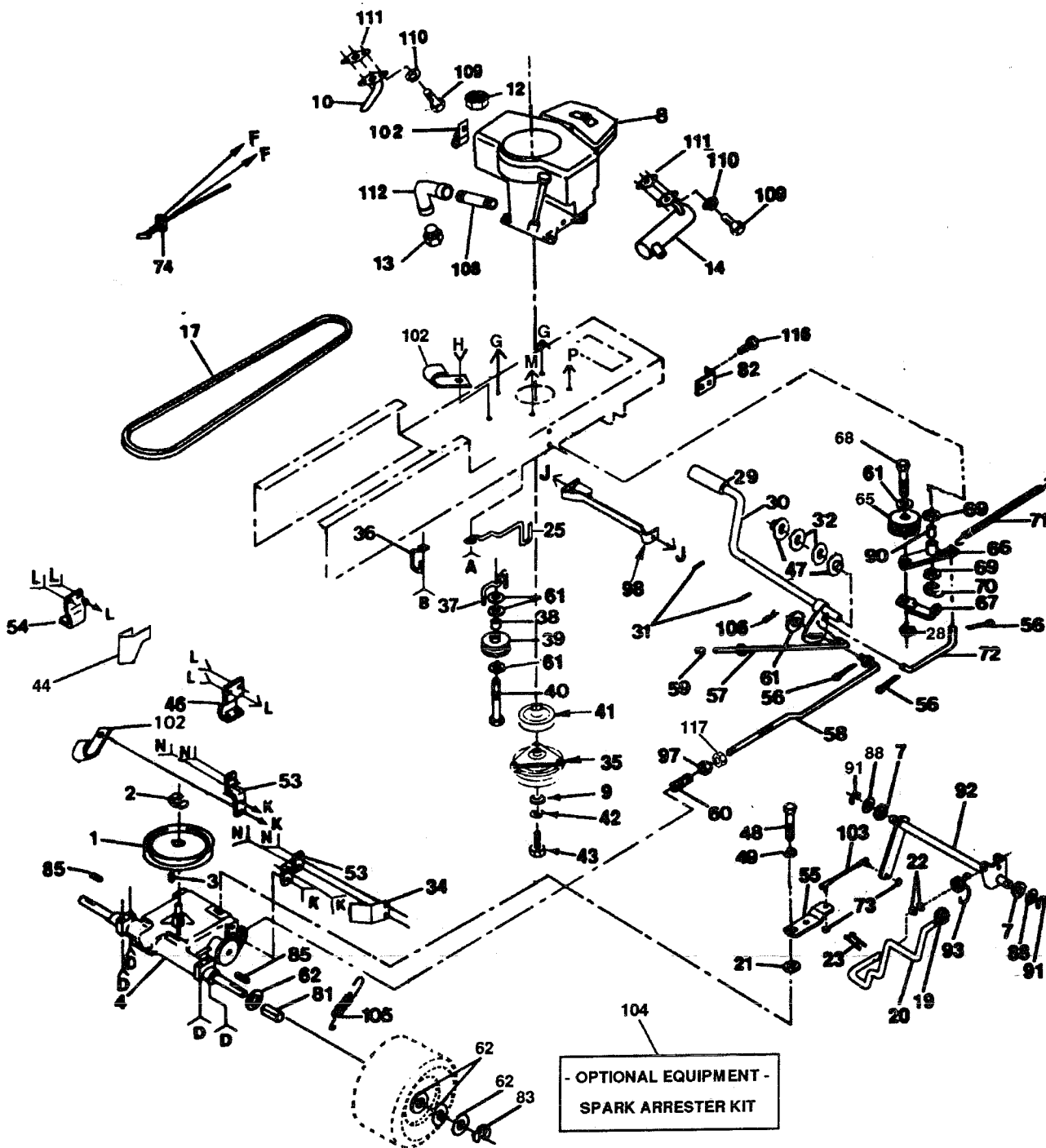
NOTE: All component dimensions given in U.S. inches.
1 inch = 25.4 mm.



REPAIR PARTS

18 HP 44" TRACTOR - - MODEL NUMBER AYP8186A39

DRIVE



REPAIR PARTS

18 HP 44" TRACTOR - - MODEL NUMBER AYP8186A39

DRIVE

KEY NO.	PART NO.	DESCRIPTION
---------	----------	-------------

1	121327X	Pulley, Transaxle (Driven)
2	12000004	Ring, Retainer
3	2228M	Key, Woodruff #9
4	123797X	Transaxle, Peerless Model No. 820-016A
5	72140506	Bolt, Carriage 5/16-18 x 3/4
6	19111012	Washer 11/32 x 5/8 x 12 Ga.
7	71208	Bushing, Rod, Steering
8	-----	Engine (See Breakdown)
9	126197X	Washer 15/32 x 1-3/4 x 1/4
10	100229L	Tube Assembly, Exhaust
11	17490628	Screw, Hex Wsh. Thdrol 3/8-16 x 1-3/8
12	73510600	Nut, Keps 3/8-16
13	-----	Plug, Oil Drain (Order from Engine Mfg.)
14	108373X	Muffler
17	123796X	V-Belt, Drive
19	106933X	Knob
20	123781X	Rod, Shifter
21	105701X	Washer, Shift Plate
22	19171216	Washer 17/32 x 3/4 x 16 Ga.
23	76020416	Pin, Cotter 1/8 x 1
24	17490612	Screw, Hex Washer Hd. Thd. Roll. 3/8-16 x 3/4
25	129921	Keeper, Belt, Engine, LH
26	74760616	Bolt, Hex 3/8-16 x 1
27	19131312	Washer 13/32 x 13/16 x 12 Ga.
28	73680600	Nut, Crownlock 3/8-16
29	8883R	Cover, Foot Pedal
30	122424X	Shaft, Foot Pedal
31	1572H	Pin, Roll 3/16 x 1
32	19211616	Washer 21/32 x 1 x 16 Ga.
34	123792X	Keeper, Belt, Transaxle, R.H.
35	137140	Clutch, Electric
36	136715	Retainer, Belt
37	109070X	Keeper, Belt
38	4470J	Spacer
39	123674X	Idler, Flat
40	74760644	Bolt, Hex 3/8-16 x 2-3/4
41	136906	Pulley, Engine
42	10040700	Washer, Lock 7/16
43	71170768	Bolt, Hex 7/16-20 x 4-1/4
44	123791X	Keeper, Belt, Transaxle, L.H.
46	123776X	Bracket Transaxle, R.H.
47	120183X	Bearing Nylon
48	71040412	Bolt, Hex 1/4-28 x 3/4
49	19091216	Washer 9/32 x 3/4 x 16 Ga.
51	73680500	Nut, Crownlock 5/16-18
52	74760540	Bolt, Hex 5/16 -18 x 2-1/2
53	123787X	Strap, Torque
	123780X	Bracket, Transaxle, L.H.

KEY NO.	PART NO.	DESCRIPTION
---------	----------	-------------

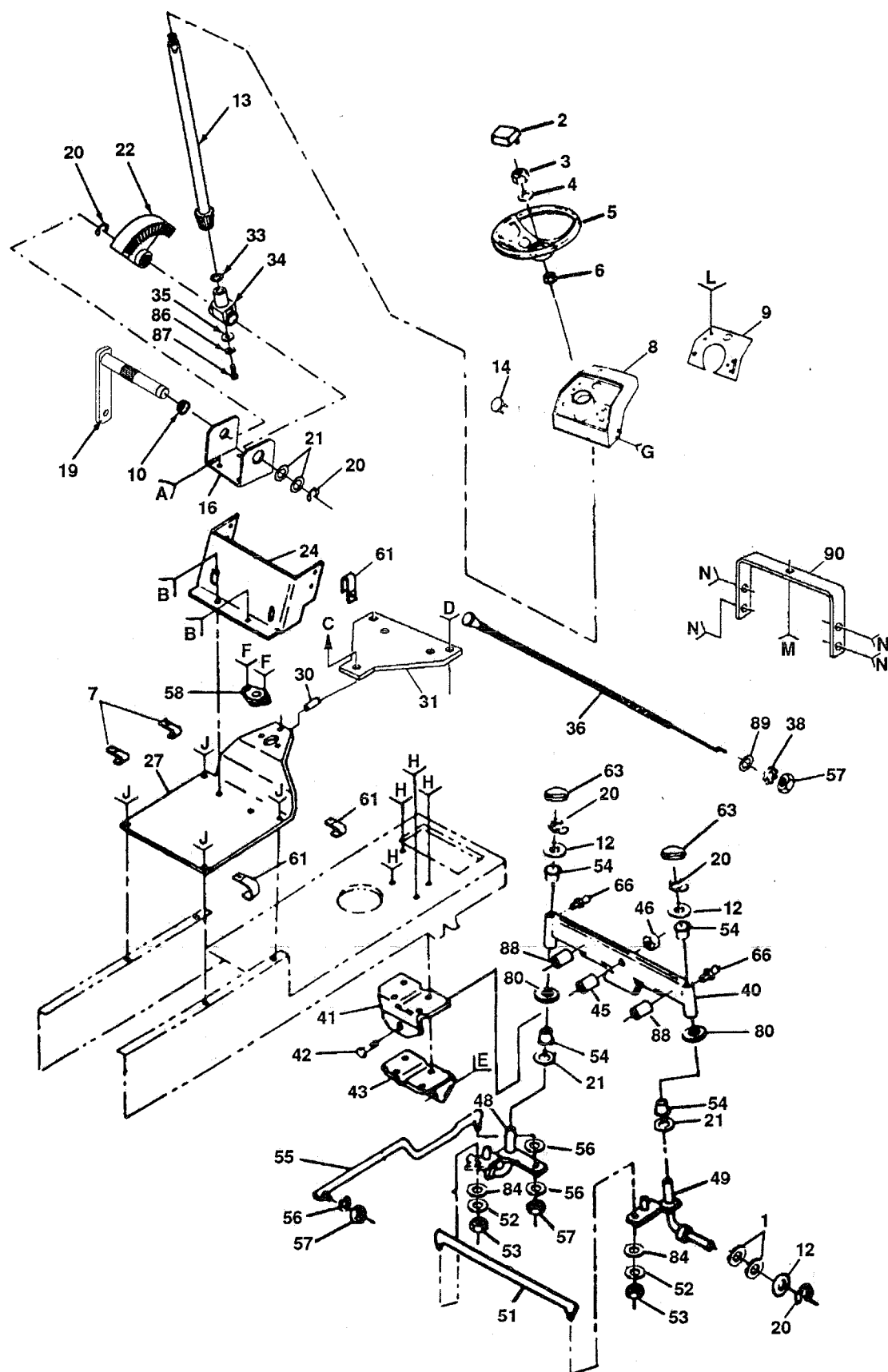
55	123794X	Shift Arm
56	76020412	Pin, Cotter 1/8 x 3/4
57	133261	Rod, Brake, Park
58	123786X	Rod, Brake
59	71673	Cap, Plunger
60	126909X	Spring, Rod, Brake
61	19131316	Washer 13/32 x 13/16 x 16 Ga.
62	123800X	Washer 1-1/32 x 1-5/8 x 16 Ga.
65	127783	Pulley, Idler
66	123789X	Arm, Idler
67	123205X	Retainer, Belt
68	74760624	Bolt, Hex 3/8-16 x 1-1/2
69	110812X	Washer, Hardened
70	12000039	Ring, Clip
71	105709X	Spring, Return, Clutch
72	105710X	Link, Clutch
73	73530400	Nut 1/4-28
74	132747	Control, Throttle
75	17720410	Screw, Hex, Thread Cutting 1/4-20 x 5/8
81	108097X	Spacer, Split
82	108236X	Bracket, Switch
83	12000053	E-Ring
85	9396E	Key Square 1/4 x 2
87	17490624	Bolt, Hex, Washer, Thread Rolling 3/8-16 x 1-1/2
88	19212016	Washer 21/32 x 1-1/4 x 16 Ga.
89	74760612	Bolt Hex 3/8-16 x 3/4
90	105706X	Bearing
91	12000008	Ring, Klip
92	123772X	Shaft Assembly, Shifter
93	123782X	Spring, Torsion
94	11050600	Washer, Lock, Ext. Tooth 3/8
97	73800600	Locknut 3/8-16
98	137141	Bracket Assembly, Clutch
101	17490512	Screw, Hex, Washer, Thread Rolling 5/16-18 x 3/4
102	2751R	Clip, Fuel Line
103	123793X	Rod, Tie
104	132922	Spark Arrester Kit
105	110422X	Spring, Brake Return
106	4497H	Clip, Hair Pin
108	13280336	Nipple, Pipe
109	74780412	Bolt, Hex 1/4-20 x 3/4
110	10040400	Washer, Lock 1/4
111	8545J	Gasket
112	13200300	Elbow, Pipe STD 90°
116	17021008	Screw, Tap Hex Hd. #10-24 x 1/2
117	73350600	Nut, Hex Jam 3/8-16

NOTE: All component dimensions given in U.S. inches.
1 inch = 25.4 mm

REPAIR PARTS

18 HP 44" TRACTOR - - MODEL NUMBER AYP8186A39

STEERING ASSEMBLY



REPAIR PARTS

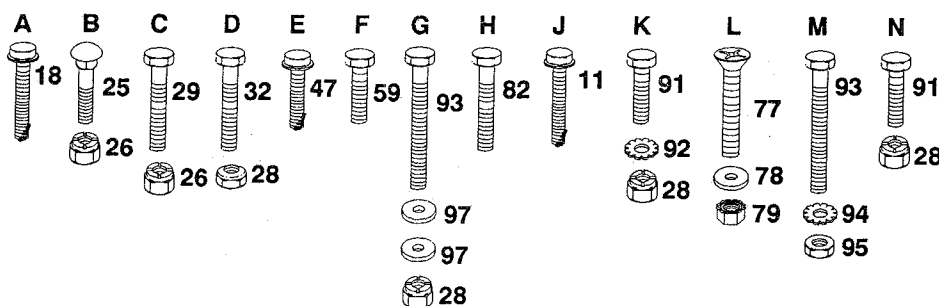
18 HP 44" TRACTOR - - MODEL NUMBER AYP8186A39

STEERING ASSEMBLY

KEY NO.	PART NO.	DESCRIPTION
1	121749X	Washer, 25/32 x 1-1/4 x 16 Ga.
2	133742	Insert, Steering Wheel
3	73940800	Nut, Hex Jam Top Lock 1/2-20 UNF
4	100712K	Washer
5	133741	Wheel, Steering
6	100711L	Adapter, Steering Wheel
8	124252X	Dash
9	121444X028	Dash Plate
10	109816X	Nyliner, Snap-In
11	17490608	Screw, Hex Washer Thd. Rolling 3/8-16 x 1/2
12	121748X	Washer 25/32 x 1-5/8 x 16 Ga.
13	128758	Shaft, Steering
14	8022J	Plug, Hole
16	124036X	Bracket, Steering
18	17490612	Screw, Hex Washer Thd. Rolling 3/8-16 x 3/4
19	127501	Shaft, Pitman
20	12000029	Klip Ring
21	6266H	Bearing, Thrust
22	136874	Gear, Sector
23	104783X	Dash, Lower
25	74180512	Screw, Crown Truss Hd. 5/16-18 x 3/4
26	73680500	Nut, Crownlock 5/16-18
27	123783X016	Saddle
28	73680600	Nut, Crownlock 3/8-16
29	74760532	Bolt, Hex 5/16-18 x 2
30	121236X	Spacer
31	137654	Support, Battery
32	74760612	Bolt, Hex 3/8-16 x 3/4
33	57079	Washer
34	124035X	Shaft, Support
35	126684X	Washer 5/8 x 1/4 x 16 Ga.
36	132781	Control, Choke
38	11050600	Washer, Lock, Int./Ext. Tooth 3/8
40	108075X	Axle, Front
41	105663X	Support, Saddle, Rea

KEY NO.	PART NO.	DESCRIPTION
42	74761060	Bolt, Hex 5/8-11 x 3-3/4
43	105664X	Support, Saddle, Front
45	110438X	Spacer, Bearing, Front Axle
46	73901000	Locknut, Hex w/wsh 5/8 - 11 UNC
47	17490508	Screw, Hex Washer Thd. Rolling 5/16-18 x 1/2
48	135227	Spindle, L.H.
49	135228	Spindle, R.H.
51	130467	Rod, Tie
52	10040500	Washer, Lock 5/16
53	73810500	Nut, Hex 5/16-24
54	3366R	Bearing
55	130468	Link, Drag
56	10040600	Washer, Lock 3/8
57	73610600	Nut, Hex 3/8-24
58	1554J	Bushing, Steering
59	17431008	Screw, Hex #10-16 x 1/2
61	2751R	Clip, Fuel Line
63	121232X	Spindle, Cap
66	6855M	Grease Zerk
77	74180512	Screw, Pan Head 5/16-18 x 3/4
78	19111116	Washer 13/32 x 11/16 x 16 Ga.
79	73510500	Nut, Keps 5/16-18
80	19272016	Washer 27/32 x 1-1/4 x 16 Ga.
82	122819X	Screw, Special 3/8-16 x 3/4
84	19111216	Washer 11/32 x 3/4 x 16 Ga.
86	10040400	Washer, Lock 1/4
87	71070410	Screw, Socket, Hex 1/4 x 20 x 5/8
88	132624	Pin, Axle 5/8 x 1.55/1.54
89	19131316	Washer 13/32 x 13/16 x 16 Ga.
90	124130X	Support, Dash
91	74760612	Bolt, Fin, Hex 3/8-16 x 3/4
92	11050600	Washer, Lock, Ext. Tooth
93	74760616	Bolt, Fin, Hex 3/8-16 x 1
94	11050400	Washer, Lock, Ext. Tooth
95	73220400	Nut, Fin, Hex 1/4-20
97	19131312	Washer 13/32 x 13/16 x 12 Ga

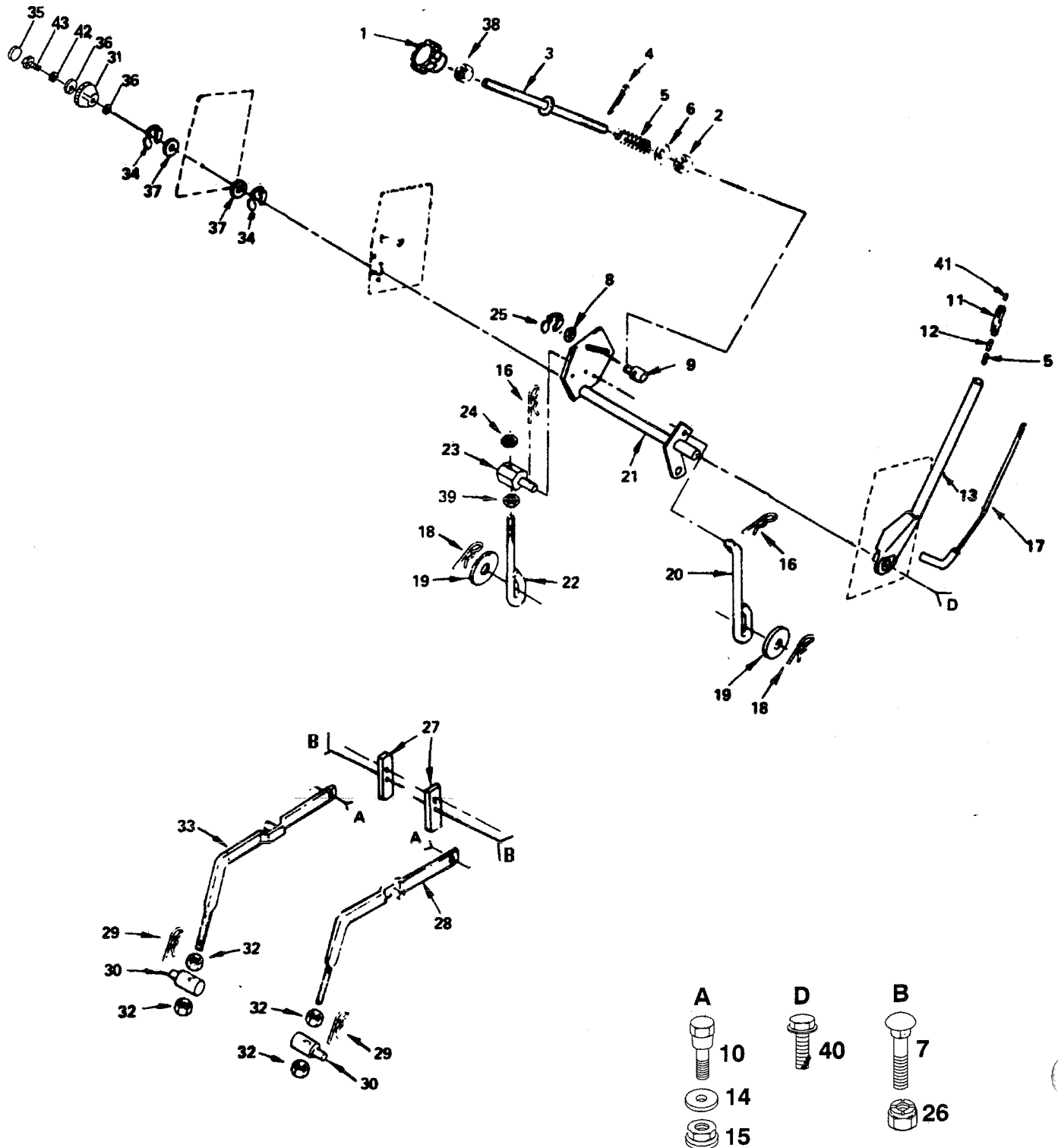
NOTE: All component dimensions given in U.S. inches.
1 inch = 25.4 mm



REPAIR PARTS

18 HP 44" TRACTOR - - MODEL NUMBER AYP8186A39

LIFT ADJUSTMENT



REPAIR PARTS

18 HP 44" TRACTOR - - MODEL NUMBER AYP8186A39

LIFT ADJUSTMENT

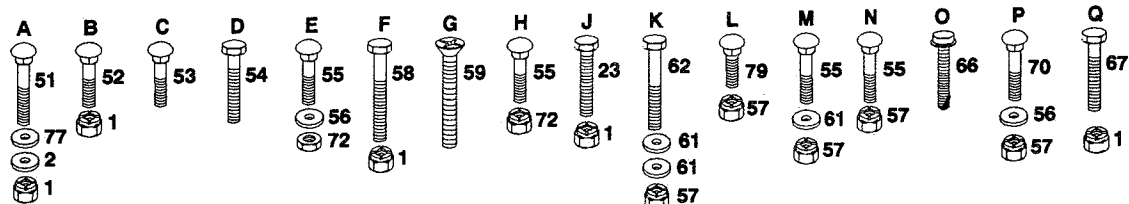
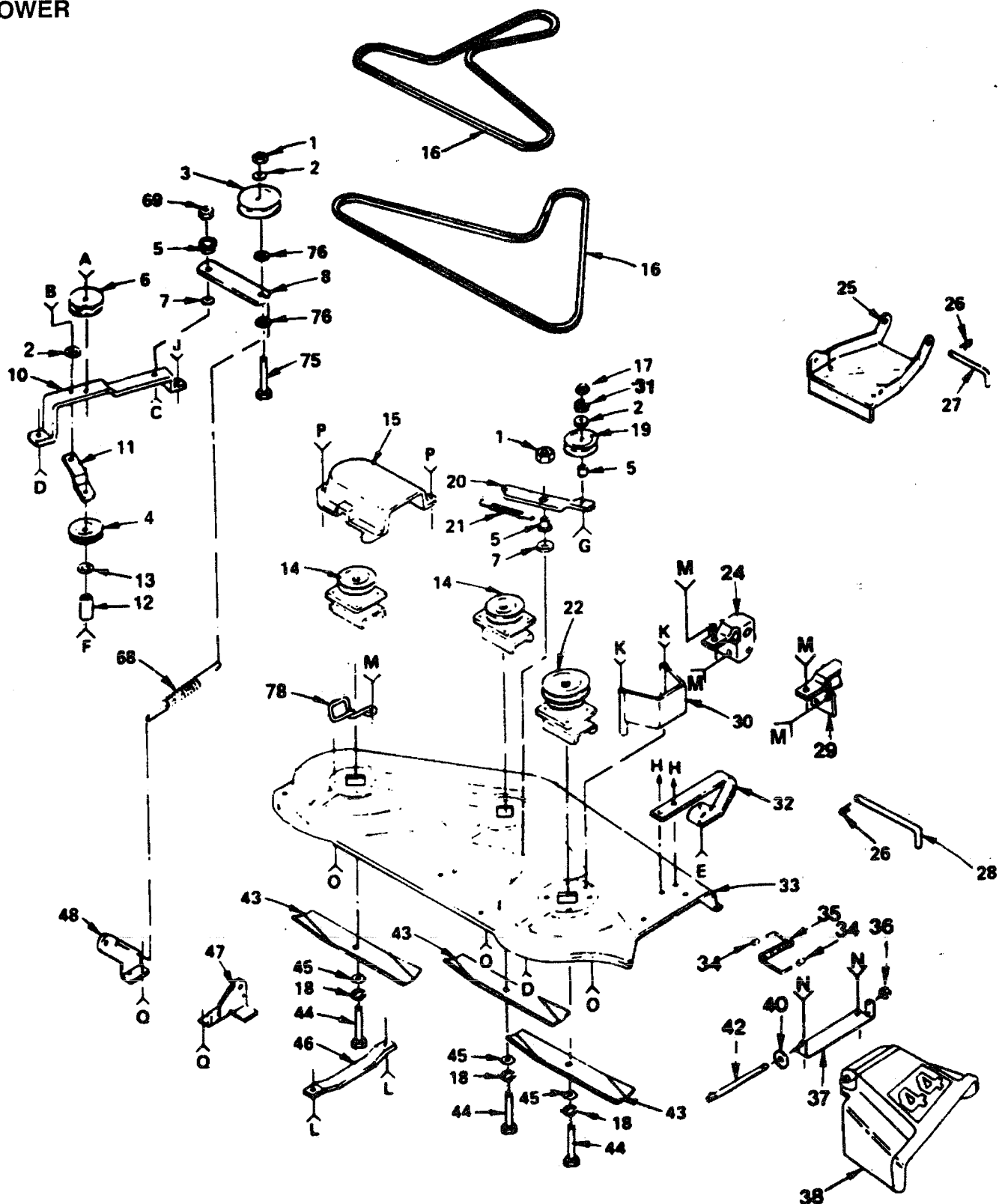
KEY NO.	PART NO.	DESCRIPTION	KEY NO.	PART NO.	DESCRIPTION
1	138057	Knob, Infinite Adjustment	24	73710700	Nut, Corownlock 7/16-20 UNF
2	110807X	Nut, Hex Special	25	12000037	Klip Ring
3	110729X	Rod, Adjust, Lift	26	73680600	Nut, Crownlock 3/8-16
4	76020308	Pin, Cotter 3/32 x 1/2	27	121252X	Upstop Mower
5	2876H	Spring	28	121598X	Arm, Suspension, R.H.
6	19131016	Washer 13/32 x 5/8 x 16 Ga.	29	9135R	Retainer Spring
7	72140608	Bolt, Carriage 3/8-16 x 1	30	106308X	Trunnion, Lift, Lower
8	19151216	Washer 15/32 x 3/4 x 16 Ga.	31	123934X	Scale, Height Indicator
9	110810X	Trunnion	32	73220800	Nut, Hex Fin. 1/2-13
10	105848X	Bolt, Shoulder 3/8 - 16	33	121599X	Arm, Suspension, L.H.
11	109413X	Grip, Handle	34	12000022	E-Ring
12	122364X	Plunger, Lever	35	123935X	Plug, Hole
13	121002X	Lever, Lift (Includes Key No. 17)	36	19112410	Washer 11/32 x 1-1/2 x 10 Ga.
14	110739X	Washer, Spring	37	19292016	Washer 29/32 x 1-1/4 x 16 Ga.
15	73980600	Nut, Flangelock 3/8 - 16	38	73350600	Nut, Hex Jam 3/8-16
16	4939M	Retainer, Spring	39	73360700	Nut, Hex Jam 7/16-20
17	121006X	Rod, Lever	40	74780624	Bolt, Hex 3/8-16 x 1-1/2
18	4921H	Retainer, Spring	41	124526X	Button, Plunger
19	19171516	Washer 17/32 x 15/16 x 16 Ga.	42	10040500	Washer, Lock, Hvy Helical
20	110029X	Link, Lift			Spring 5/16-18 x 1
21	131926	Shaft, Lift	43	74780516	Bolt, Hex 5/16-18 x 1
22	110448X	Link, Lift, Adjust			
23	110447X	Trunnion, Lift			

NOTE: All component dimensions given in U.S. inches.
1 inch = 25.4 mm

REPAIR PARTS

18 HP 44" TRACTOR - - MODEL NUMBER AYP8186A39

MOWER



REPAIR PARTS

18 HP 44" TRACTOR - - MODEL NUMBER AYP8186A39

MOWER

KEY NO.	PART NO.	DESCRIPTION
1	73680600	Nut, Crownlock 3/8-16
2	19131614	Washer 13/32 x 1 x 14 Ga.
3	121316X	Pulley Idler
4	102403X	Pulley, Idler
5	106902X	Spacer
6	677A451	Pulley Idler
7	106513X	Washer - Wear
8	121425X	Arm, Idler
10	106523X	Bar Support, Idler
11	106522X	Brace, Idler, Deck
12	121236X	Spacer
13	19131316	Washer, 13/32 X 13/16 X 16 Ga.
14	136818	Mandrel, Secondary
15	106214X	Guard
16	106085X	V Belt
17	73220600	Nut, Hex 3/8-16
18	10030600	Washer, Lock 3/8
19	102932X	Idler, Flat
20	106526X	Arm, Idler, Deck
21	7644J	Spring, Extension
22	121704X	Mandrel, Primary
23	74760616	Bolt, Hex 3/8-16 x 1
24	106511X	Bracket Lift L.H.
25	129762	Link Parallel
26	4921H	Retainer, Spring
27	105744X	Pin, Front Hinge
28	109835X	Pin, Rear Hinge
29	106512X	Bracket Lift, R.H.
30	108119X	Guard Belt, R.H.
31	10040600	Washer, Lock Hvy. Hel. Spring
32	136321	Runner, R. H.
33	121423X	Housing, Mower
34	105304X	Cap Sleeve
35	106734X	Spring
36	110452X	Nut, Push
37	137607	Bracket, Deflector
38	109785X	Guard, Discharge

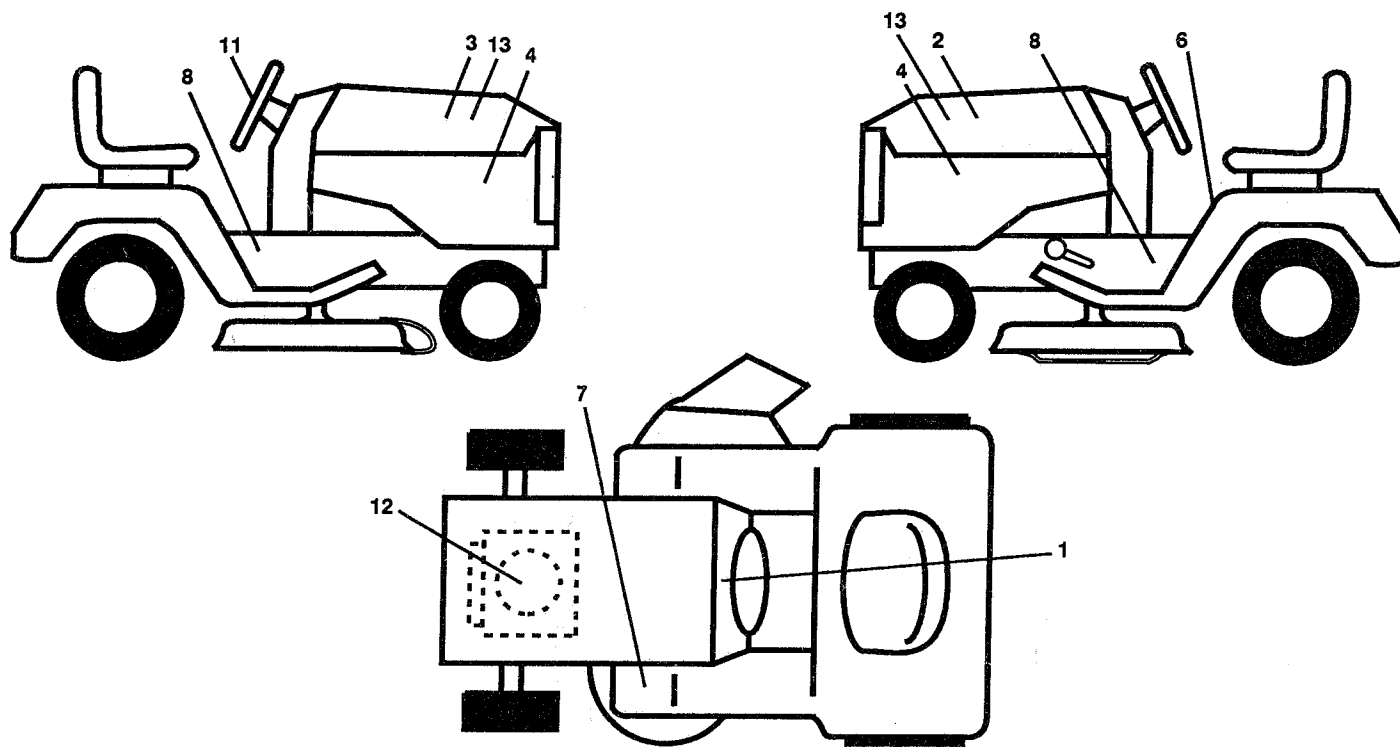
KEY NO.	PART NO.	DESCRIPTION
40	19111016	Washer 11/32 x 5/8 x 16 Ga.
42	106735X	Rod Hinge
43	106635X	Blade
44	74610624	Bolt, Hex 3/8-24 x 1- 1/2 Gr. 5
45	19132012	Washer 13/32 x 1-1/4 x 12 Ga.
46	7631J	Runner, L.H.
47	123807X	Bracket Suspension, Rear, R.H.
48	123808X	Bracket, Suspension, Rear, L.H.
51	72140614	Bolt, Carriage 3/8-16 x 1-3/4
52	72140608	Bolt, Carriage 3/8-16 x 1
53	72140612	Bolt, Carriage 3/8 16 x 1-1/2
54	74760620	Bolt, Hex 3/8-16 x 1-1/4
55	72140506	Bolt, Carriage 5/16- 18 x 3/4
56	19111116	Washer 11/32 x 11/16x 16 Ga.
57	73680500	Nut, Crownlock 5/16-18
58	74760648	Bolt, Hex 3/8-16 x 3
59	74110632	Screw, Flat Head 3/8-16 x 2
61	19111216	Washer 11/32 x 3/4x 16 Ga.
62	74760580	Bolt, Hex 5/16-18 x 5
66	17490612	Screw, Hex Washer Thread Rolling 3/8 16 x 3/4
67	72140606	Bolt, Carriage 3/8 - 16 x 3/4
68	102727X	Spring, Extension
69	73930600	Nut, Centerlock 3/8 -16
70	72110506	Bolt, Carriage 5/16-18 x 3/4
72	1685H	Nut, Crownlock 5/16-18
75	72140620	Bolt, Carriage 3/8-16 X 2 1/2
76	19131210	Washer 13/32 x 3/4 x 10 Ga.
77	19131410	Washer, 13/32 X 7/8 X 10 Ga.
78	121352X	Keeper, L.H. Mandrel
79	72110505	Bolt, Carriage 5/16 - 18 X 5/8
—	121826X	Mower Deck, Complete

NOTE: All component dimensions given in U.S. inches.
1 inch = 25.4 mm

REPAIR PARTS

18 HP 44" TRACTOR - - MODEL NUMBER AYP8186A39

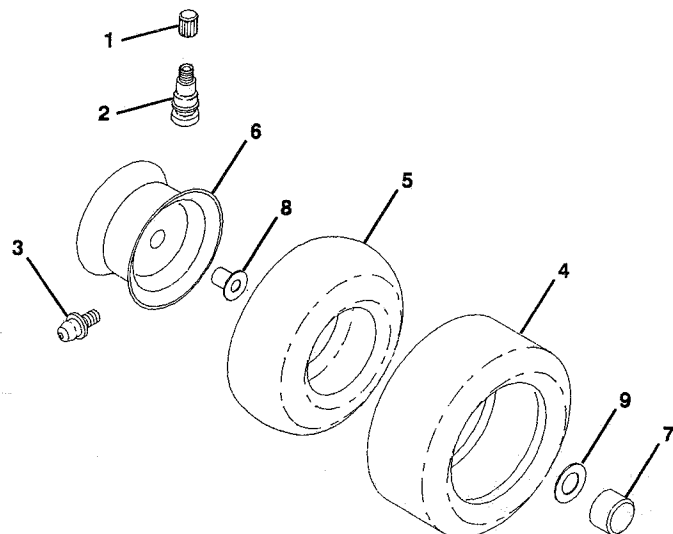
DECALS



KEY NO.	PART NO.	DESCRIPTION
1	136794	Decal Operating Instruction
2	133869	Decal Hood Lh
3	133868	Decal Hood Rh
4	134275	Decal Panel Side
6	133796	Decal Caution English
7	4900J	Decal Clutch/brake English
8	134217	Decal Chassis

KEY NO.	PART NO.	DESCRIPTION
11	133870	Decal Steering Wheel Insert
12	135426	Decal Engine HP
13	133780	Nameplate Hood Wizard
--	138311	Decal Handle Lift (Lift Handle)
--	138465	Manual Owners Ayp8186a39 Eng

WHEELS AND TIRES



KEY NO.	PART NO.	DESCRIPTION
1	59192	Cap Valve Tire (Front & Rear)
2	65139	Stem Valve (Front & Rear)
3	278H	Fitting Grease (Front Wheel Only)
4	106222X	Tire F Ts 15 X 6.0 - 6 Service
4	124106X	Tire R Ts
5	59904	Tube Front (Service Item Only)
5	7154J	Tube Rear (Service Item Only)
6	106732X311	Rim Asm 6" front White Service
6	124074X311	Rim Asm rear
7	104757X	Cap Axle Blk 1.50 X 1.00
8	9040H	Bearing Flange (Front Wheel Only)
9	121748X	Washer

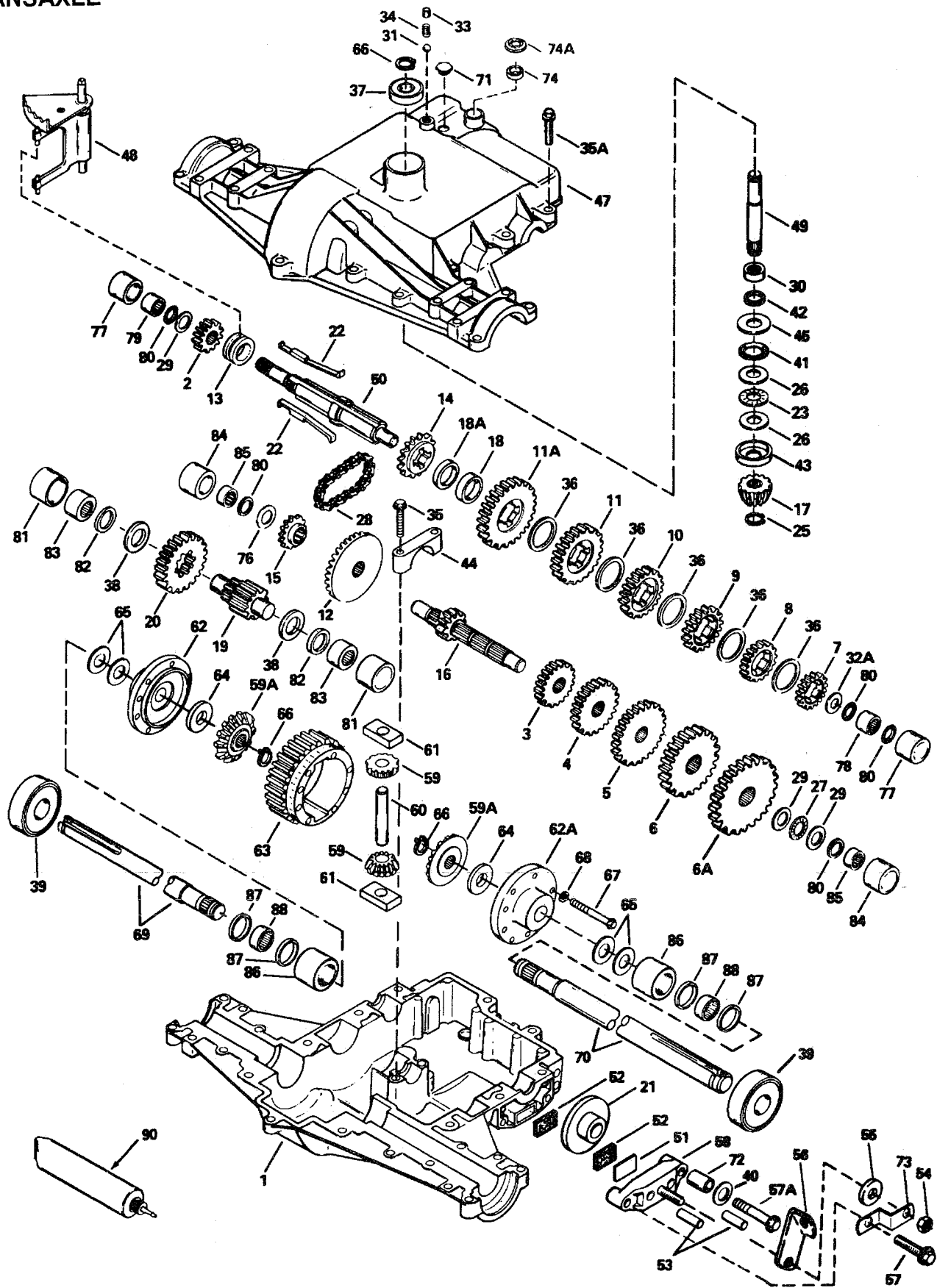
NOTE: All component dimensions given in U.S. inches.
1 inc=25.4 mm

REPAIR PARTS

18 HP 44" TRACTOR - - MODEL NUMBER AYP8186A39

PEERLESS TRANSAXLE - - MODEL NUMER 820-016A

TRANSAXLE



REPAIR PARTS

18 HP 44" TRACTOR - - MODEL NUMBER AYP8186A39

PEERLESS TRANSAXLE - - MODEL NUMER 820-016A

TRANSAXLE

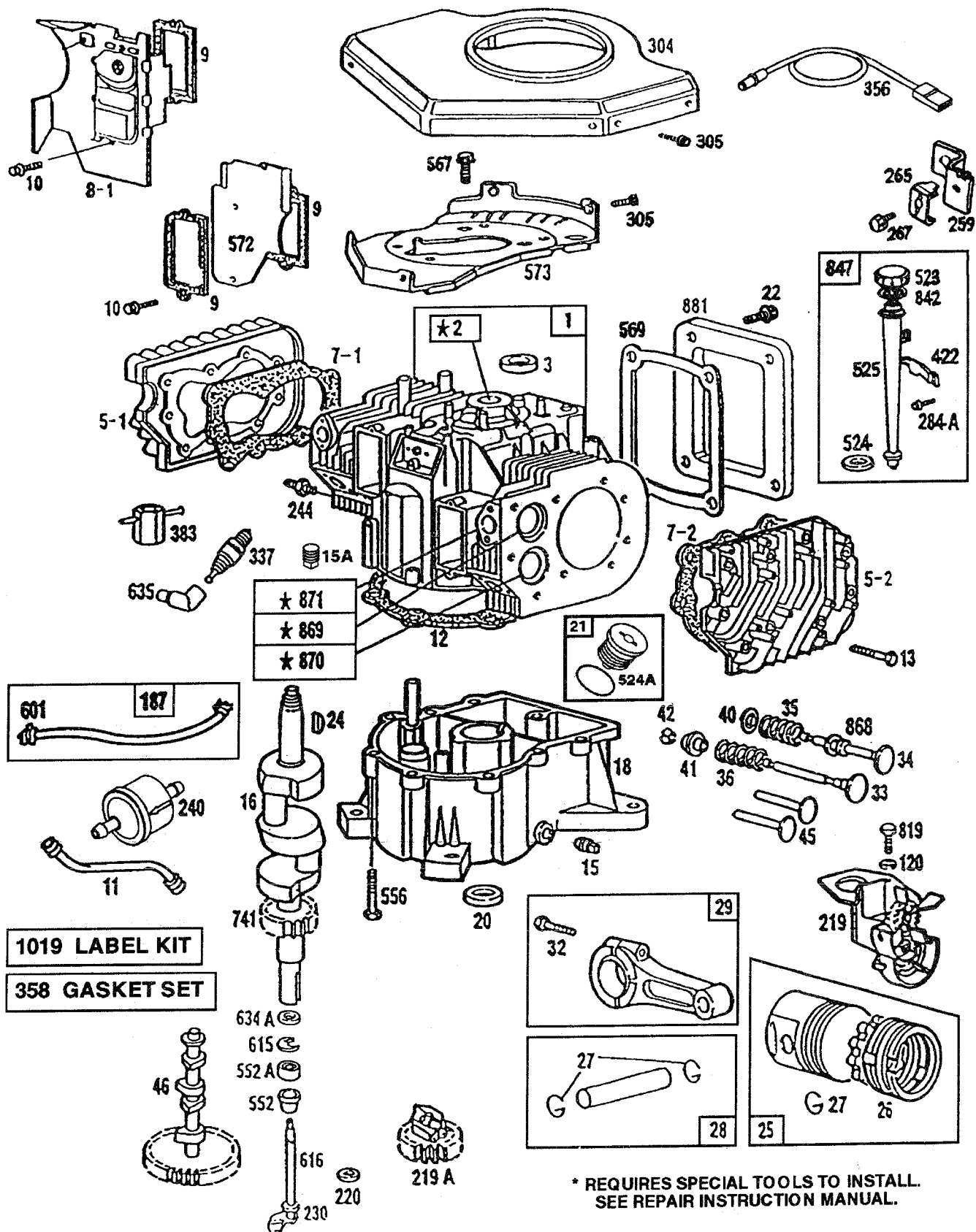
REF. PART NO. NO.	DESCRIPTION	REF. PART NO. NO.	DESCRIPTION
1 770088	Case, Transaxle	47 772098A	Cover, Transaxle
2 778253	Gear, Spur, 15 Teeth	48 784342	Rod and Fork Assembly, Shift
3 778211	Gear, Spur, 12 Teeth	49 776274	Shaft, Input
4 778240	Gear, Spur, 18 Teeth	50 776313	Shaft, Brake, 4 Keyed
5 778201	Gear, Spur, 25 Teeth	51 790007	Plate, Brake Pad
6 778202	Gear, Spur, 28 Teeth	52 790006	Pad, Brake
6A 778208	Gear, Spur, 31 Teeth	53 786026	Pin, Dowel
7 778273	Gear, Spur, 19 Teeth	54 792075	Locknut 5/16-24
8 778203A	Gear, Spur, 22 Teeth	55 792076	Washer, Flat
9 778204A	Gear, Spur, 25 Teeth	56 790047	Lever, Brake
10 778239A	Gear, Spur, 32 Teeth	57 792073	Screw, Flanged Hex Head, Thread Forming 1/4-20 x 1-1/4
11 778207A	Gear, Spur, 37 Teeth	57A 792085	Screw, Flanged Hex Head, Thread Forming 1/4-20 x 2-1/4
11A 778216A	Gear, Spur, 41 Teeth	58 790025	Holder, Brake Pad
12 778246	Gear, Bevel, 33 Teeth	59 778197	Pinion, Differential Bevel
13 784216	Collar, Shift	59A 778198	Gear, Bevel
14 786123	Sprocket, 18 Teeth	60 786019	Pin, Drive
15 786082	Sprocket, 9 Teeth	61 786027	Block, Drive
16 776291	Shaft, Counter (With 9 Tooth Gear)	62 774833	Carrier, Differential, Threaded Holes
17 778245	Bevel Pinion, Input, 13 Teeth	62A 774834	Carrier, Differential
18 786121	Spacer, Natural .350/.340 Thick	63 778248	Gear, Ring, 31 Teeth
18A 786122	Spacer, Natural .276/.268 Thick	64 780107	Washer
19 776275	Shaft, Output, 9 Teeth	65 780042	Washer, Thrust
20 778247	Gear, Output, 35 Teeth	66 792018	Ring, Snap
21 790043	Disk, Brake	67 792020	Screw, Hex Head 1/4-20 x 2-1/4
22 792138	Key	68 792006	Washer, Lock 1/4
23 780084	Bearing, Thrust	69 774832	Axle, 12-5/16" long
25 788040	Ring, Retaining	70 774831	Axle, 16-3/16" long
26 780051	Washer, Thrust	71 792074	Plug, Hex Head, Threaded 9/16-18
27 780071	Bearing, Thrust	72 786067	Spacer
28 786081	Chain Roller (#41 Chain, 24 Links)	73 786086	Bracket, Brake Lever
29 780072	Washer, Thrust	76 780153	Washer
30 780155	Bearing, Needle	77 786144	Sleeve, Stepped
31 792077	Ball, Steel	78 780150	Bearing, Needle
32A 780139	Washer, Thrust	79 780152	Bearing, Needle, Capped
33 792078	Screw, Set 3/8-16 x 3/8	80 792001	"O" Ring
34 792079	Spring	81 786142	Sleeve, Sstepped
35 792073	Screw, Flanged Hex Head, Thread Forming 1/4-20 x 1-1/4	82 788071	Ring, Square Cut
35A 792129	Screw, Hex Head, Thread Forming 5/16-18 x 1-1/4	83 780168	Bearing, Needle, Capped
36 780108	Washer, Thrust	84 786143	Sleeve, Stepped
37 780119	Bearing, Ball	85 780151	Bearing, Needle, Capped
38 780128	Washer, Thrust	86 786145	Sleeve, Stepped
39 780050	Bearing, Ball	87 788070	Ring, Square Cut
40 792128	Washer, Flat	88 780031	Bearing, Needle
41 788077	"O" Ring	90 788067B	Grease, Bentonite, 32 Ounce Bottle
42 788042	Seal, Oil		
43 780166	Washer, Cupped		
44 786131	Cap, Bearing		
45 780165	Washer, Flat		

NOTE: All component dimensions given in U.S. inches
1 inch = 25.4 mm

REPAIR PARTS

18 HP 44" TRACTOR - - MODEL NUMBER AYP8186A39

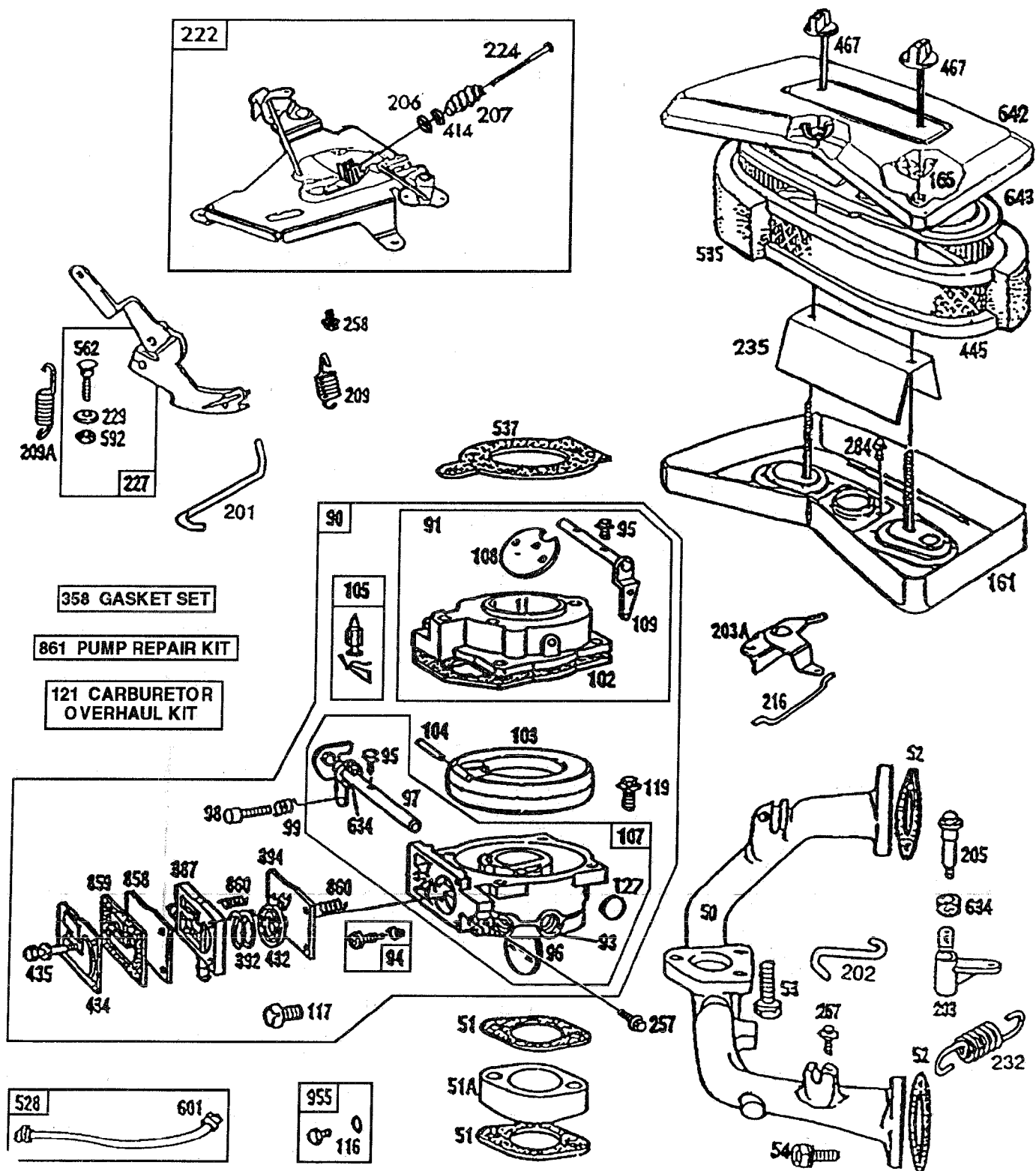
ENGINE BRIGGS & STRATTON - - MODEL NUMBER 422707, TYPE 1253-01



REPAIR PARTS

18 HP 44" TRACTOR - - MODEL NUMBER AYP8186A39

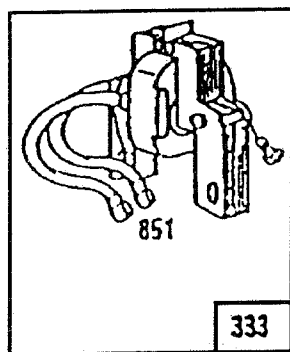
ENGINE BRIGGS & STRATTON - - MODEL NUMBER 422707, TYPE 1253-01



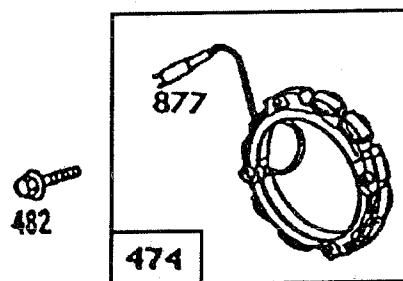
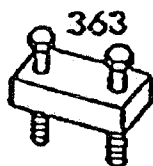
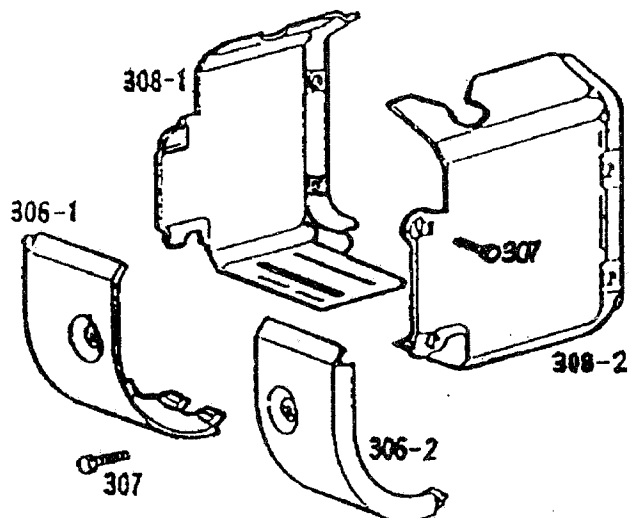
REPAIR PARTS

18 HP 44" TRACTOR - - MODEL NUMBER AYP8186A39

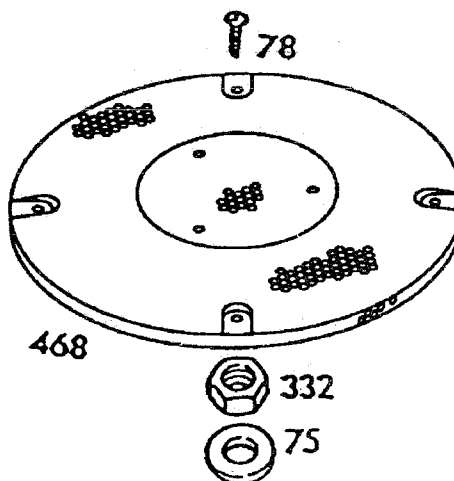
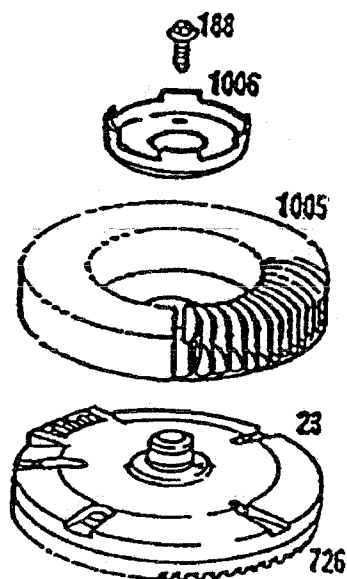
ENGINE BRIGGS & STRATTON - - MODEL NUMBER 422707, TYPE 1253-01



334



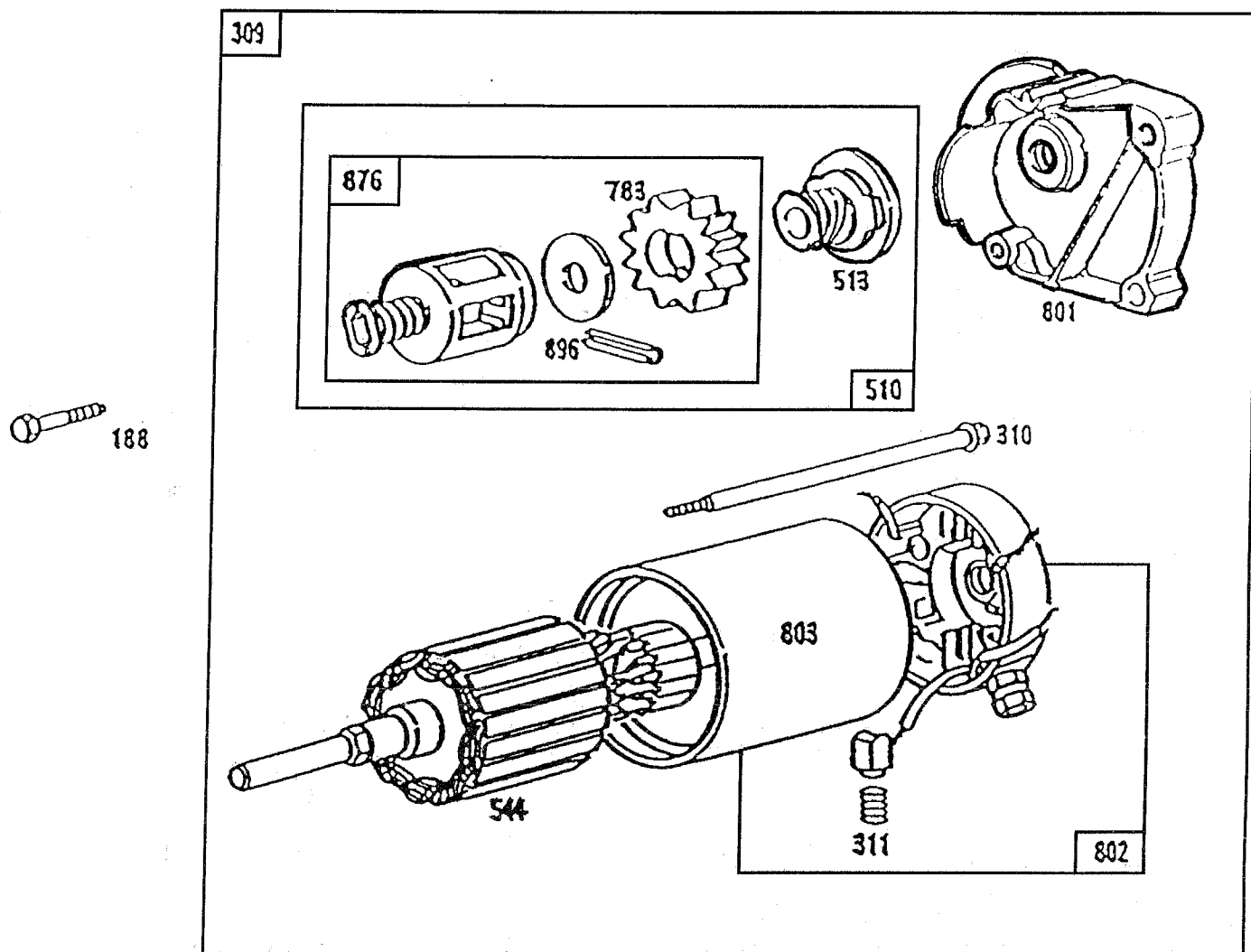
482



REPAIR PARTS

18 HP 44" TRACTOR - - MODEL NUMBER AYP8186A39

ENGINE BRIGGS & STRATTON - - MODEL NUMBER 422707, TYPE 1253-01



Reference Number		309	310	311	544	801	802	803
Manufacturer		Motor and Drive Ass'y.	Thru Bolt Assembly	Brush Assembly	Armature Assembly	Drive End Cap Assembly	End Cap Ass'y. Commutator	Housing Assembly
Briggs & Stratton	Housing Length							
12V	3-5/8"	394808	94003	395538	390837	394860	395537*	398159

*Includes Brush Set

Reference Number	510	513	783	876	896
Starter Motor Mfr.	Starter Drive Group	Clutch Assembly	Gear	Pinion Spring Kit	Roll Pin
Briggs & Stratton					
12V	490421	398003	280104	490467	94288(Copper)

REPAIR PARTS

18 HP 44" TRACTOR - - MODEL NUMBER AYP8186A39

ENGINE BRIGGS & STRATTON - - MODEL NUMBER 422707, TYPE 1253-01

KEY PART NO. NO.	DESCRIPTION	KEY PART NO. NO.	DESCRIPTION
1 494533	Cylinder Assembly	46 213520	Gear, Cam
2 399265	Bearing, Cylinder	50 213290	Manifold, Intake
3 391086	Seal, Oil	51 271412	*** Gasket, Carburetor & Intake Elbow
5-1 493457	Head, Cylinder Number 1	51A 280319	Spacer, Carburetor
5-2 493458	Head, Cylinder Number 2	52 270884	* Gasket, Intake Manifold Mounting
7-1 271867	* Gasket, Cylinder Head Number 1	53 93970	Screw, Sems, Carburetor Mounting
7-2 271868	* Gasket, Cylinder Head Number 2	54 93208	Screw, Sems, Intake Manifold Mnt.
8-1 398065	Breather Assembly Number 1	75 222511	Washer, Spring
8-2 222892	Cover, Breather, Cylinder Number 2 (Use with Key Number 572, Air Baffle with Mounting Holes)	78 94326	Screw, Sems
9 27803	* Gasket, Valve Cover	81 223016	Lock, Muffler Screw
10 94382	Screw, Sems	90 495181	Carburetor Assembly
11 280225	Tube, Breather	91 495035	Body Assembly, Upper Carburetor
12 271703	* Gasket, Crankcase Cover 1/64"	93 231209	Bushing, Throttle Shaft
271188	* Gasket, Crankcase Cover .005"	94 491538	** Valve Assembly, Carburetor Idle
271189	* Gasket, Crankcase Cover .009"	95 93499	Screw, Sems, Throttle and Choke
13 94565	Screw, Cylinder Head	96 221939	Valve Mounting
15 94239	Plug, Oil Drain	97 392672	Valve, Throttle
15A 94497	Plug, Pipe	98 91920	Shaft and Lever, Throttle
16 394028	Crankshaft	99 26157	Screw, Machine, Fillister Head
94196	Key, Timing Gear	102 271607	Spring, Throttle Adjustment
18 493304	Base Assembly, Crankcase	103 298514	** Gasket, Carburetor Body
20 291675	Seal, Oil	104 230896	Float, Carburetor
21 399195	Seal Assembly, Cylinder Plug	105 394683	** Pin, Float Hinge
22 94724	Screw, Sems,	107 491543	** Valve, Fuel Inlet
	Crankcase Cover Mounting	108 223534	Body, Lower Carburetor
23 491180	Flywheel and Ring Gear Assembly,	109 392673	Valve, Choke
	Magneto	116 280474	Shaft and Lever, Choke
24 222698	Key, Flywheel	117 231338	* O-Ring
25 394955	Piston Assembly, Standard Size	119 94152	Jet, Needle Valve
394956	Piston Assembly .010" Oversize	120 92290	Screw, Sems, Hex Head
394957	Piston Assembly .020" Oversize	121 491539	Washer, Lock
394958	Piston Assembly .030" Oversize	127 223472	Carburetor Overhaul Kit
26 394959	Ring Set, Piston, Standard Size	161 398826	Plug, Welch
394960	Ring Set, Piston .010" Oversize	165 94289	Body, Air Cleaner
394961	Ring Set, Piston .020" Oversize	187 299146	Nut, Wing
394962	Ring Set, Piston .030" Oversize	188 93535	Line, Fuel, 28" (Cut to Suit)
27 260924	Lock, Piston Pin	201 262683	Screw, Hex Head
28 299691	Pin Assembly, Piston, Standard	202 262684	Link, Governor
391286	Pin Assy., Piston .005" Oversize	203 280997	Link, Throttle
29 394306	Rod Assembly, Connecting	203A 490207	Crank, Bell
397158	Rod Assembly, Connecting, .020" Undersize Crankpin Bore	205 93971	Crank, Bell
32 94671	Screw, Connecting Rod	206 94298	Screw, Shoulder
33 390420	Valve, Exhaust	207 262337	Nut, Square
34 261528	Valve, Intake	209 262351	Spring, Compression
	Uses: 393606 Seal Assembly and Retainer (Key Number 868)	209A 261563	Spring, Governor
35 65906	Spring, Intake Valve	216 262375	Spring, Governor Idle
36 26828	Spring, Exhaust Valve		Link
40 221596	Retainer, Intake Valve		
41 292260	Rotocoil, Exhaust Valve		
42 93630	Retainer, Exhaust Valve Rotocoil(2)		
45 261368	Tappet, Valve		

* Included in Gasket Set (495868)
 ** Included in Carburetor Overhaul Kit (491539)
 *** Included in both Gasket Set (495868), and
 Carburetor Overhaul Kit (491539)

NOTE: All component dimensions given in U.S. inches
 1 inch = 25.4 mm

REPAIR PARTS

18 HP 44" TRACTOR - - MODEL NUMBER AYP8186A39

ENGINE BRIGGS & STRATTON - - MODEL NUMBER 422707, TYPE 1253-01

KEY PART
NO. NO.

DESCRIPTION

219	393415	Oil Slinger Assembly
219A	394348	Gear, Governor
220	222773	Washer, Thrust
222	491282	Plate Assembly, Governor Control
224	94297	Screw, Pan Head
227	491297	Lever Assembly, Governor
229	62199	Washer
230	223882	Washer, Governor Crank, Inside
232	262539	Spring, Governor Control
235	224039	Shield, Spitback
240	493629	Filter, Fuel (In Fuel Line to Tank)
244	230318	Connector, Impulse Pump
257	93897	Screw, Sems
258	93949	Screw, Sems
259	223890	Bracket, Cable
265	221535	Clamp, Casing
267	93496	Screw, Hex Head
284	94264	Screw, Hex Head
284A	93469	Screw, Hex Head
304	492656	Housing, Blower
305	94608	Screw, Sems 1/2
	94513	Screw, Sems 3/4
306-1	222846	Shield, Cylinder
306-2	223734	Shield, Cylinder
307	94386	Screw, Sems
308-1	222848	Cover, Air Guide
308-2	222849	Cover, Air Guide
309	---	Motor, Starting (See Chart on Illustrated Pages for Part Numbers)
319	394988	Armature Assembly
332	230674	Nut, Hex
333	394891	Armature Group, MAGNETRON® Ignition
334	93381	Screw, Sems, Armature Mounting
337	802592	Plug, Spark, Resistor (with Gasket)
356	494705	Wire, Ground
358	495868	Gasket Set
363	19203	Puller, Flywheel (Optional Accy.)
383	89838	Wrench, Spark Plug
387	280197	Body, Pump
392	261395	**** Spring, Pump
394	270988	**** Diaphragm
414	223882	Washer
422	222875	Clamp, Oil Filler
432	221377	**** Cap, Spring
434	223688	Cover, Diaphragm
435	93829	Screw, Diaphragm Cover
445	394019	Cartridge, Air Cleaner
467	493903	Knob, Air Cleaner
468	224521	Screen, Flush Rotating
474	392595	Stator, Alternator, Tri-Circuit
482	93621	Screw, Sems
523	494927	Cap and Dipstick, Oil Filler
	271157	Seal, Filler Tube
4A	271485	Seal, Tube
525	495348	Tube, Oil Filler

KEY PART
NO. NO.

DESCRIPTION

528	393815	Impulse Line and Clamp Assembly
535	271271	Element, Air Cleaner
537	271411	*** Gasket, Air Cleaner
552	262332	Lower Bushing, Governor
552A	262331	Upper Bushing, Governor
556	93585	Screw, Sems, Hex Head
562	93853	Bolt, Governor Lever
567	93777	Screw, Hex Head, Back Plate to Cylinder
569	272645	* Gasket, Crankcase
572	224580	Baffle, Air, Cylinder Number 2
573	491304	Back Plate Assembly
592	92278	Nut, Hex
601	93053	Clamp, Fuel Line
615	94296	Retainer, E-Ring
616	491530	Crank, Governor
634	271013	** Washer, Throttle Shaft
634A	491287	Seal, Governor Shaft
635	66538	Elbow, Spark Plug
642	223579	Cover, Air Cleaner
643	223714	Cartridge Plate, Air Cleaner
726	391362	Gear, Flywheel Ring (Includes Mounting Parts)
741	262694	Gear, Timing
819	94675	Screw, Hex Head
842	271170	Seal, Oil Filler Cap
847	394394	Dipstick and Tube Assembly
851	221798	Terminal, Ignition Cable
858	270989	**** Diaphragm, Damping
859	271025	**** Gasket, Carburetor Pump
860	261358	**** Spring (2)
861	393397	Repair Kit, Pump
868	393606	Seal Assembly and Retainer
869	261463	Seat, Intake Valve, Standard
870	213316	Seat, Exhaust Valve, Standard
871	261961	Guide, Exhaust Valve
	231218	Guide, Intake Valve (See Manual)
877	393537	Connector Assembly, Tri-Circuit
881	212455	Cover Plate, Crankcase
955	397882	Plug and Seal, Solenoid
1005	280815	Fan, Flywheel
1006	224413	Retainer, Fan
1019	491262	Decal Kit

RPM Settings: Low: 1200 - 1600
High: 3500 - 3700

- * Included in Gasket Set (495868)
- ** Included in Carburetor Overhaul Kit (491539)
- *** Included in both Gasket Set (495868), and Carburetor Overhaul Kit (491539)
- **** Included in both Carburetor Overhaul Kit (491539), and Pump Repair Kit (393397)

NOTE: All component dimensions given in U.S. inches
1 inch = 25.4 mm