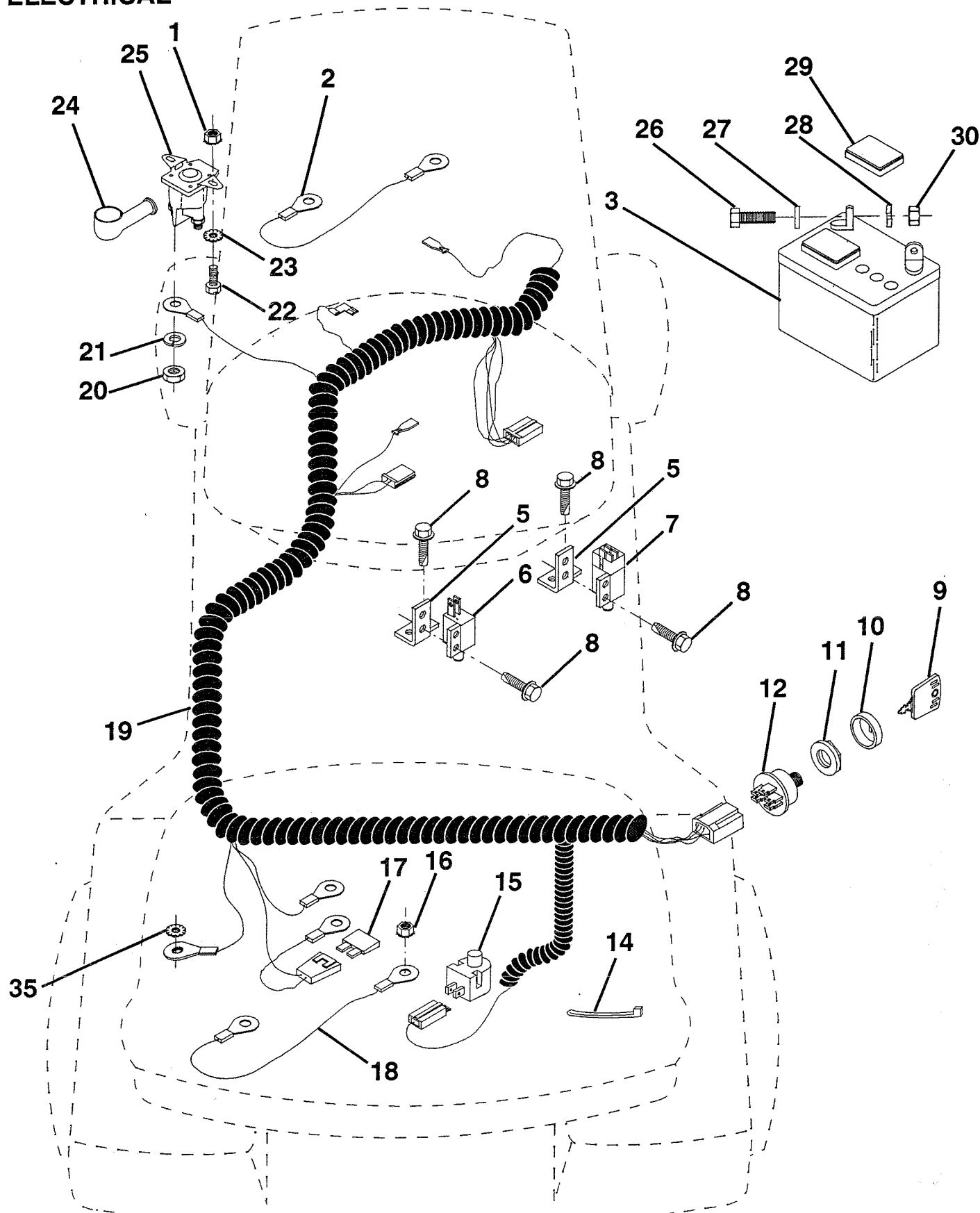


REPAIR PARTS

10.5 HP 36" TRACTOR -- MODEL NUMBER FA10536A

ELECTRICAL



REPAIR PARTS

10.5 HP 36" TRACTOR - - MODEL NUMBER FA10536A

ELECTRICAL

KEY PART NO.	NO.	DESCRIPTION
1	873510400	Nut, Hex, Keps 1/4-20
2	532108423	Assembly, Cable
3	532133909	Battery
5	532108236	Bracket, Switch
6	532104445	Switch, Interlock, 2 Terminal
7	532109553	Switch, Interlock, 4 Terminal
8	817021008	Screw, Hex Head, Tapping #10-24 x 1/2
9	532122147	Key, Molded
10	532123620	Cover, Ignition Key
11	532124211	Nut, Ignition
12	532125104	Switch, Ignition
14	532124756	Tie, Cable
15	532121305	Switch, Plunger
16	873510500	Nut, Hex, Keps 5/16-18
17	532108824	Fuse
18	532128353	Assembly, Cable
19	532132223	Harness, Ignition
20	873350400	Nut, Hex, Jam 1/4-20
21	810090400	Washer, Lock 1/4
22	874780408	Bolt, Hex Head, Fin. 1/4-20 UNC x 1/2 Grade 5
23	811050400	Washer, Lock, External Tooth 1/4
24	532131563	Cover, Terminal
25	532109081	Solenoid
26	874760412	Bolt, Hex Head 1/4-20 UNC x 3/4
27	819091016	Washer 9/32 x 5/8 x 16 Gauge
28	810040400	Washer, Lock 1/4
29	532121264	Cap, Battery
30	873220400	Nut, Hex, Fin. 1/4-20 UNC
35	811050600	Washer, Lock, External Tooth 3/8

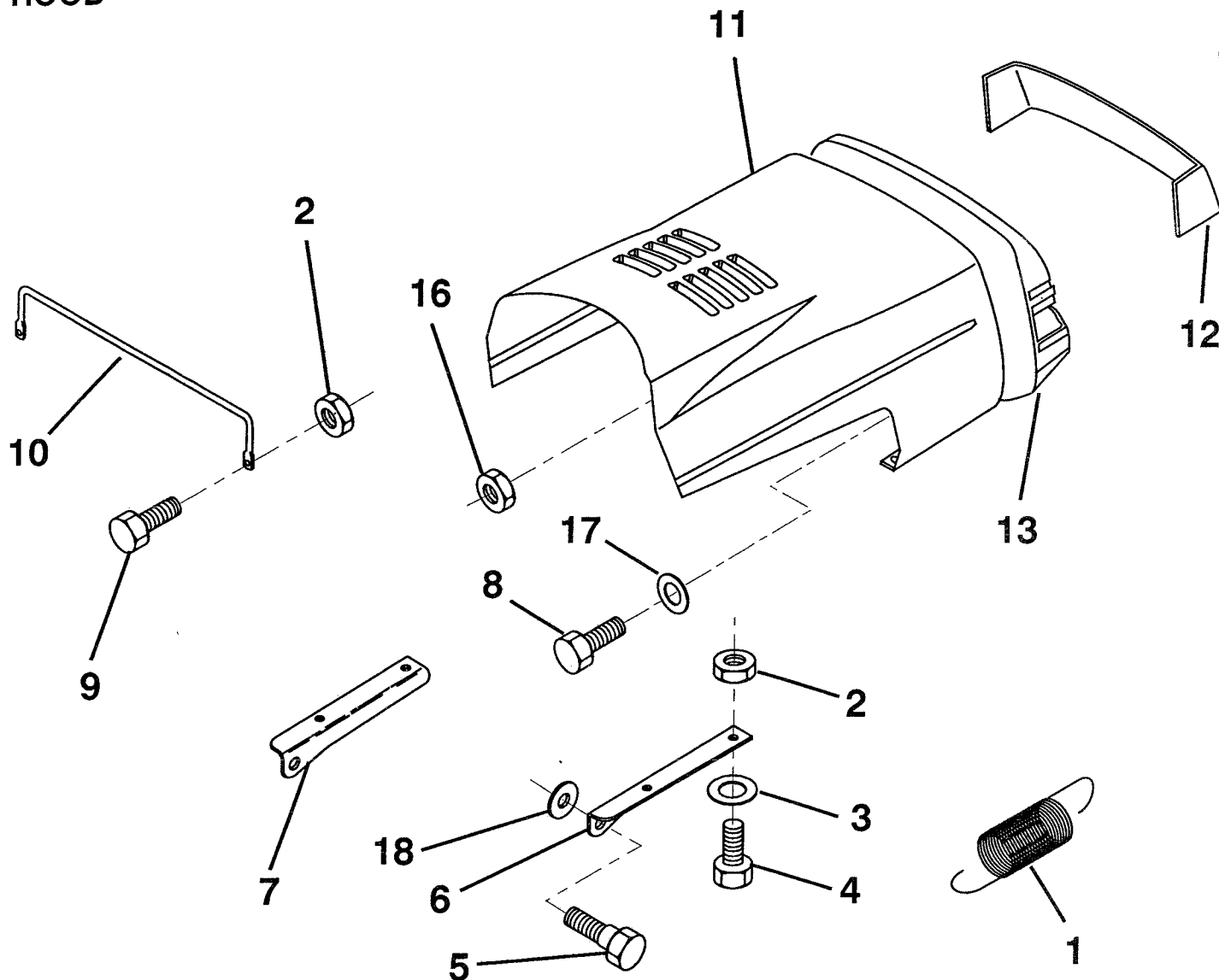
NOTE: All component dimensions given in U.S. inches
1 inch = 25.4 mm

HARDWARE SHOWN LARGER FOR EASIER IDENTIFICATION

REPAIR PARTS

10.5 HP 36" TRACTOR - - MODEL NUMBER FA10536A

HOOD



KEY PART NO. NO.

DESCRIPTION

1	532124657	Spring, Extension
2	873510400	Nut, Hex, Keps 1/4-20
3	819091016	Washer 9/32 x 5/8 x 16 Gauge
4	874780410	Bolt, Hex Head, Fin. 1/4-20 UNC x 5/8 Grade 5
5	532126675	Bolt, Shoulder
6	532122549	Bracket, Hood, R.H.
7	532122548	Bracket, Hood, L.H.
8	817411310	Screw, Hex Head, Fin. #13-16 Hi-Lo x 5/8
9	874780412	Bolt, Hex Head, Fin. 1/4-20 x 3/4 Grade 5

KEY PART NO. NO.

DESCRIPTION

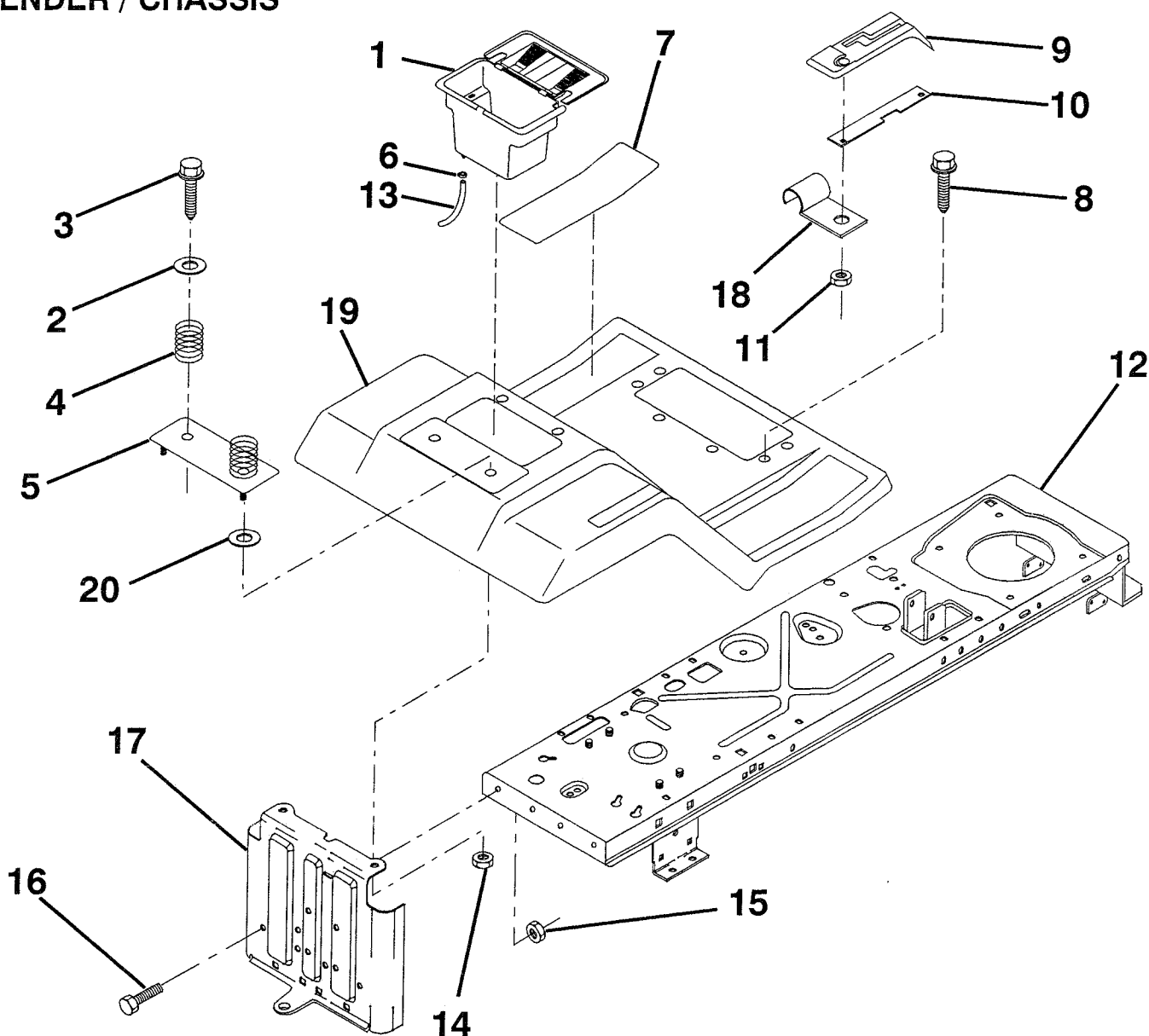
10	532123693	Brace, Hood
11	532125388	Hood
12	532125403	Lens, Plate, Grill
13	532123705	Grill
16	532124346	Nut, Washer Head, Self-Threading 1/4
17	819091216	Washer 9/32 x 3/4 x 16 Gauge
18	819111116	Washer 11/32 x 11/16 x 16 Gauge

NOTE: All component dimensions given in U.S. inches.
1 inch = 25.4 mm

HARDWARE SHOWN LARGER FOR EASIER IDENTIFICATION

REPAIR PARTS

10.5 HP 36" TRACTOR - - MODEL NUMBER FA10536A FENDER / CHASSIS



KEY PART NO. NO.

1	532129965	Case, Battery
2	819132012	Washer 13/32 x 1-1/4 x 12 Gauge
3	817490612	Screw, Hex Washer Head, Thd., Roll. 3/8-16 x 3/4
4	532124181	Spring, Compression, Seat
5	532125152	Plate Assembly, Battery
6	532109596	Clamp, Hose
7	532124144	Pad, Footrest
8	817490512	Screw, Hex Washer Head, Thd., Roll. 5/16-18 x 3/4
9	532126997	Console, Shift Control
10	532124602	Bar, Shift Lock

KEY PART NO. NO.

11	532124346	Nut, Self-Threading, Washer Head 3/16
12	532133384	Assembly, Chassis
13	532105687	Tube, Battery Drain
14	873510400	Nut, Hex, Keps 1/4-20
15	873680500	Nut, Crownlock 5/16-18
16	874760512	Bolt, Hex Head 5/16-18 UNC x 3/4
17	532127880	Drawbar
18	532126470	Clip, Insulated
19	532125151	Fender/Footrest
20	819091413	Washer 9/32 x 7/8 x 13 Gauge

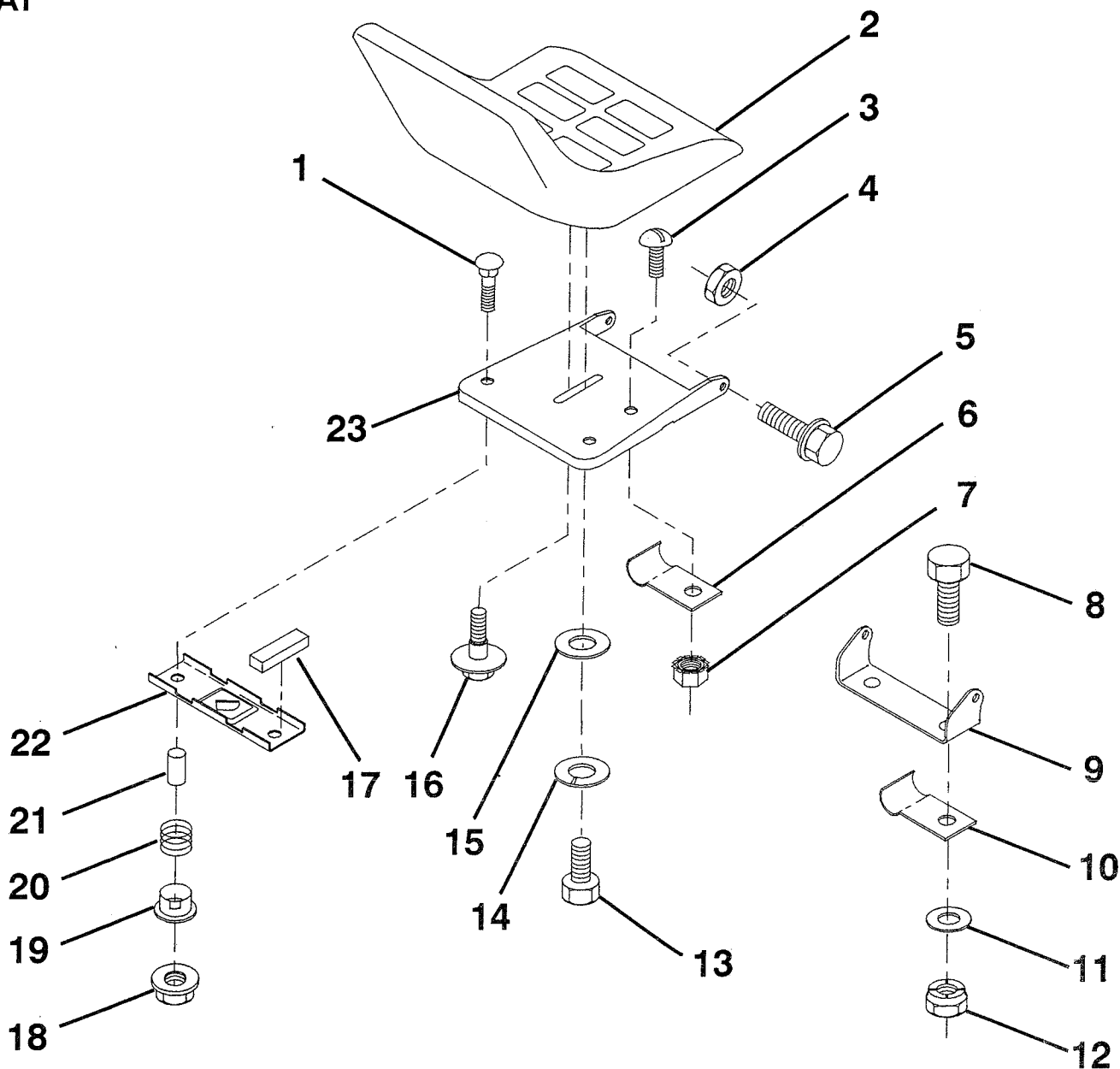
NOTE: All component dimensions given in U.S. inches
1 inch = 25.4 mm

HARDWARE SHOWN LARGER FOR EASIER IDENTIFICATION

REPAIR PARTS

10.5 HP 36" TRACTOR - - MODEL NUMBER FA10536A

SEAT



KEY PART NO. NO.

DESCRIPTION

1	872050411	Bolt, Carriage 1/4-20 x 1-3/8
2	532127423	Seat
3	874641008	Screw, Slotted Pan Head #10-32 x 1/2
4	873680500	Nut, Crownlock 5/16-18
5	532105529	Bolt, Shoulder 5/16-18 UNC
6	532124967	Clip, Insulated
7	873951000	Nut, Hex, Keps #10-32 UNF
8	874760612	Bolt, Hex, Fin. 3/8-16 UNC x 3/4
9	532126656	Bracket, Pivot, Seat
10	532126471	Clip, Insulated
11	819131210	Washer 12/32 x 3/4 x 10 Gauge
12	873680600	Nut, Crownlock 3/8-16 UNC

KEY PART NO. NO.

DESCRIPTION

13	874780814	Bolt, Hex Head, Fin. 1/2-13 UNC x 7/8 Grade 5
14	810040800	Washer, Lock, Heavy Helical Spring
15	819171912	Washer 17/32 x 1-3/16 x 12 Gauge
16	532127018	Bolt, Shoulder
17	532121251	Strip, Foam
18	532123976	Locknut, Hex, Flange, Large
19	532121248	Bushing, Snap
20	532121250	Spring, Compression
21	532121249	Spacer, Split, Large .28 Id. x .88
22	532121246	Bracket, Switch, Mounting
23	532131451	Pan, Seat

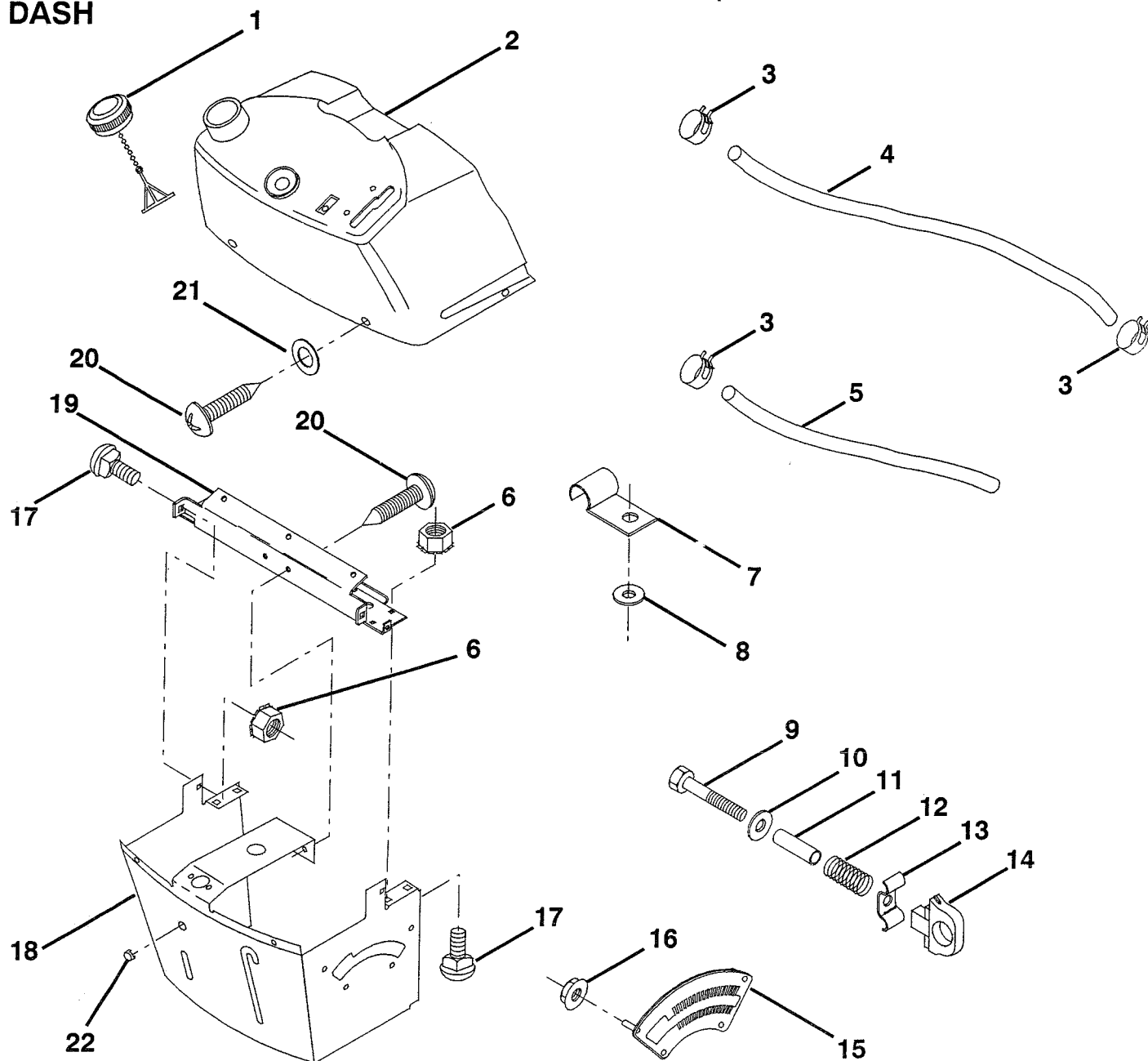
NOTE: All component dimensions given in U.S. inches
1 inch = 25.4 mm

HARDWARE SHOWN LARGER FOR EASIER IDENTIFICATION

REPAIR PARTS

10.5 HP 36" TRACTOR - - MODEL NUMBER FA10536A

DASH



KEY PART
NO. NO.

DESCRIPTION

1	532122015	Cap, Fuel
2	532130913	Dash and Fuel Tank Assembly
3	532123487	Clamp, Hose
4	532008544	Line, Fuel
5	532008548	Line, Fuel
6	873510400	Nut, Hex, Keps 1/4-20
7	532124996	Clip, Fuel Line
8	819091216	Washer 9/32 x 3/4 x 16 Gauge
9	874760428	Bolt, Hex Head, Fin. 1/4-20 x 1-3/4
10	819091413	Washer 11/32 x 11/16 x 16 Gauge
11	532121249	Spacer, Split
12	532003720	Spring

KEY PART
NO. NO.

DESCRIPTION

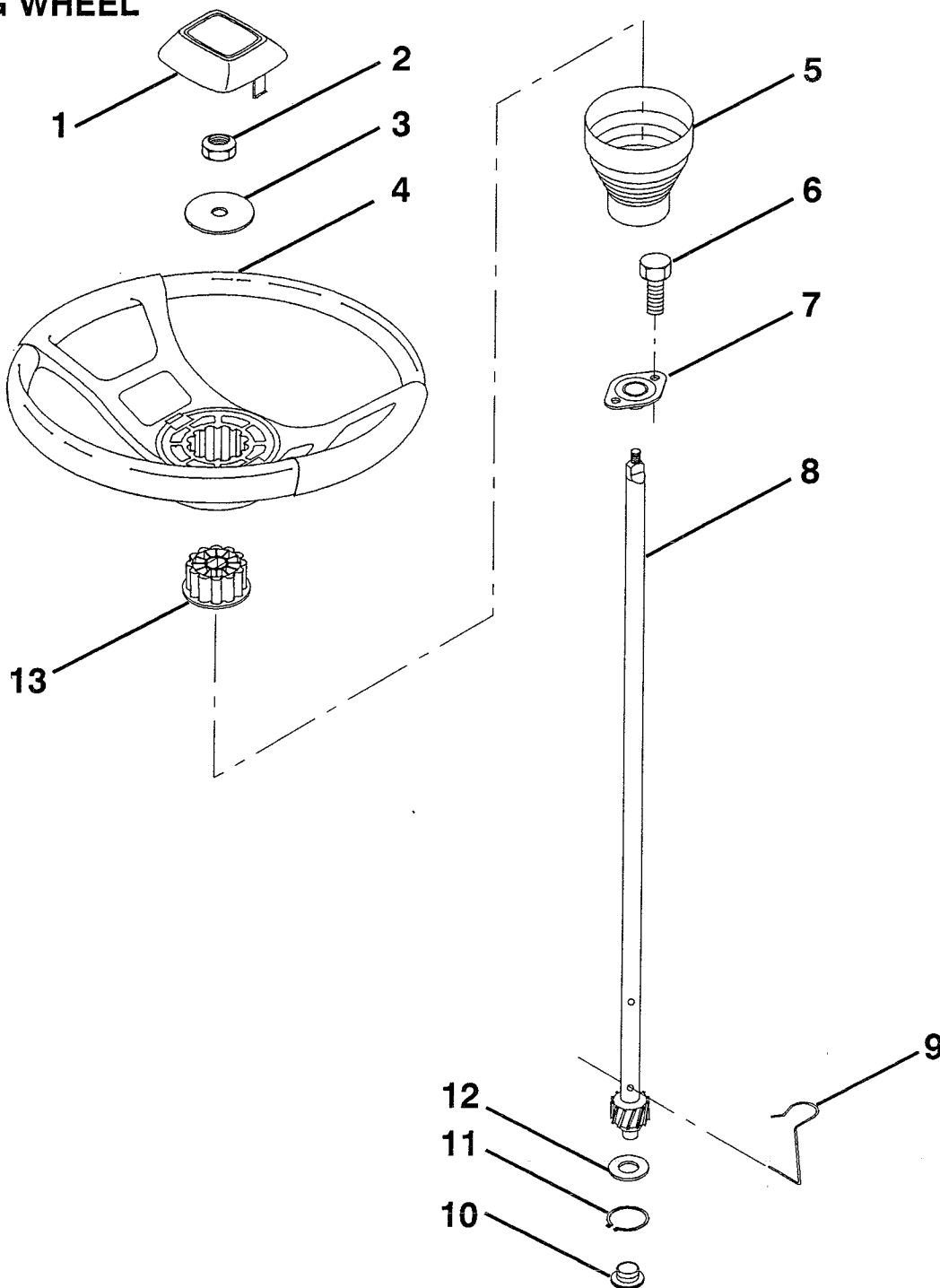
13	532126450	Clip, Height Adjustment
14	532126115	Knob, Height Stop
15	532122023	Adjustment, Quadrant Height
16	532124346	Nut, Self-Threading 3/16-18
17	872110404	Bolt, Carriage 1/4-20 x 1/2 Grade 5
18	532130745	Support Assembly, Dash
19	532134744	Brace, Cross
20	818000408	Screw, Self-Tapping 1/4-20 x 1/2
21	819090816	Washer 9/32 x 1/2 x 16 Gauge
22	532134014	Plug, Dome Black

NOTE: All component dimensions given in U.S. inches
1 inch = 25.4 mm

HARDWARE SHOWN LARGER FOR EASIER IDENTIFICATION

REPAIR PARTS

10.5 HP 36" TRACTOR - - MODEL NUMBER FA10536A STEERING WHEEL



KEY PART NO. NO.

DESCRIPTION

1	532133742	Insert, Steering Wheel
2	532124701	Locknut 3/8-24 UNF
3	819133808	Washer 12/32 x 2-3/8 x 8 Gauge
4	532133741	Steering Wheel
5	532121897	Sleeve, Steering
6	817431008	Screw, Hex #10-16 x 1/2 TY-B
7	532102803	Bushing, Steering
8	532123651	Shaft, Steering

KEY PART NO. NO.

DESCRIPTION

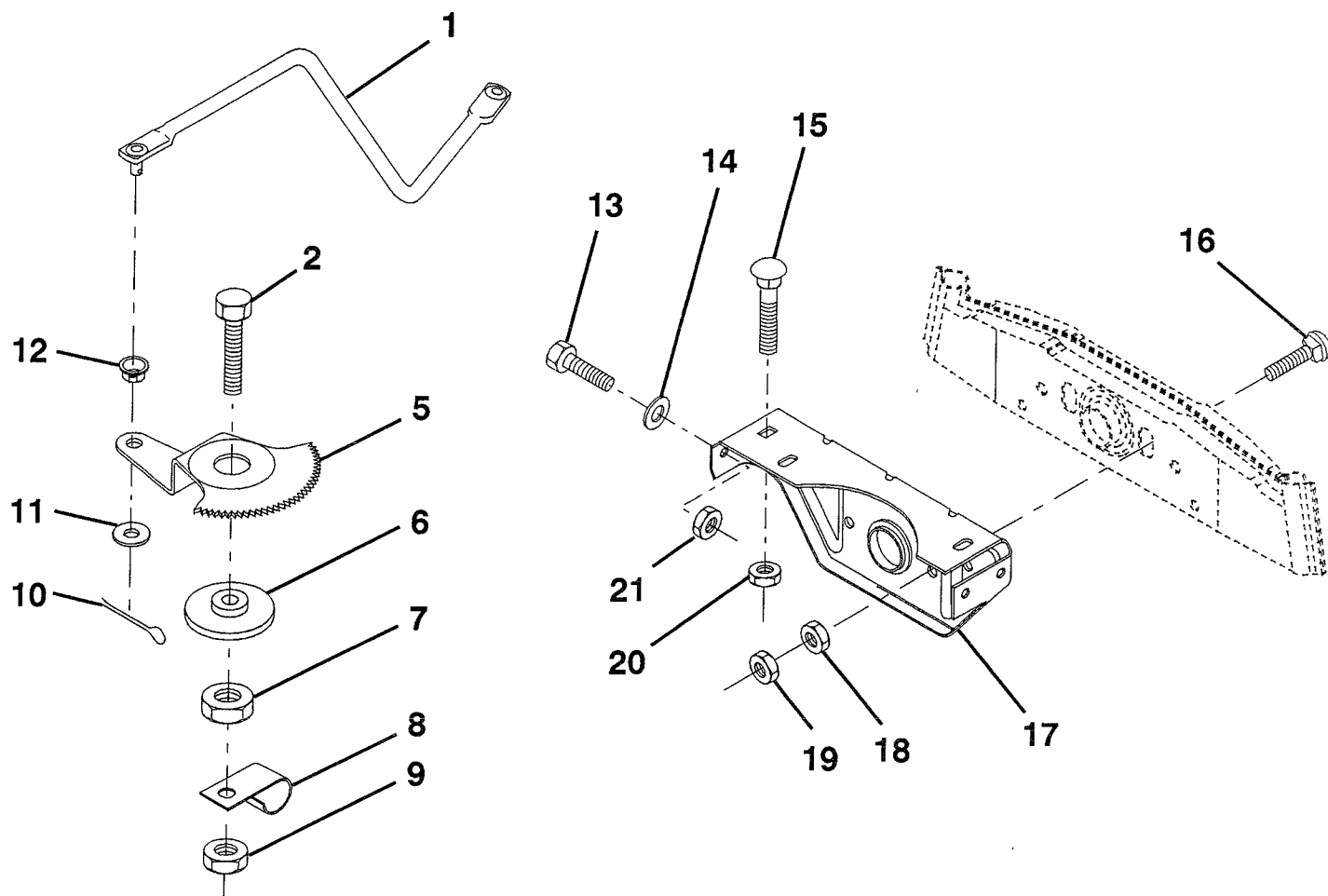
9	532124210	Clip, Steering
10	532123438	Bushing, Lower, Steering
11	812000045	Ring, Retaining
12	819211616	Washer 21/32 x 1 x 16 Gauge
13	532104820	Adaptor, Steering Wheel

NOTE: All component dimensions given in U.S. inches
1 inch = 25.4 mm

HARDWARE SHOWN LARGER FOR EASIER IDENTIFICATION

REPAIR PARTS

10.5 HP 36" TRACTOR - - MODEL NUMBER FA10536A SECTOR GEAR / AXLE SUPPORT



KEY PART NO. NO.

DESCRIPTION

1	532132566	Link, Drag
2	874780828	Bolt, Hex Head, Fin. 1/2-13 x 1-3/4
5	532121926	Gear, Sector
6	532121927	Bushing
7	873030800	Nut, Hex, Heavy, Top Lock 1/2-13 UNC
8	532126472	Clip, Insulated
9	873680800	Nut, Crownlock 3/8-16
10	876020412	Pin, Cotter 1/8 x 3/4
11	819131316	Washer 13/32 x 13/16 x 16 Gauge
12	532126847	Bushing

KEY PART NO. NO.

DESCRIPTION

13	874760512	Bolt, Hex Head 5/16-18 UNC x 3/4
14	819111416	Washer 11/32 x 7/8 x 16 Gauge
15	872110606	Bolt, Carriage 3/8-16 UNC x 3/4
16	872140622	Bolt, Carriage
17	532121912	Support, Front Axle
18	873220600	Nut, Hex, Fin. 3/8-16 UNC
19	873930600	Nut, Centerlock 3/8-16 UNC
20	873680600	Nut, Crownlock 3/8-16 UNC
21	873680500	Nut, Crownlock 5/16-18

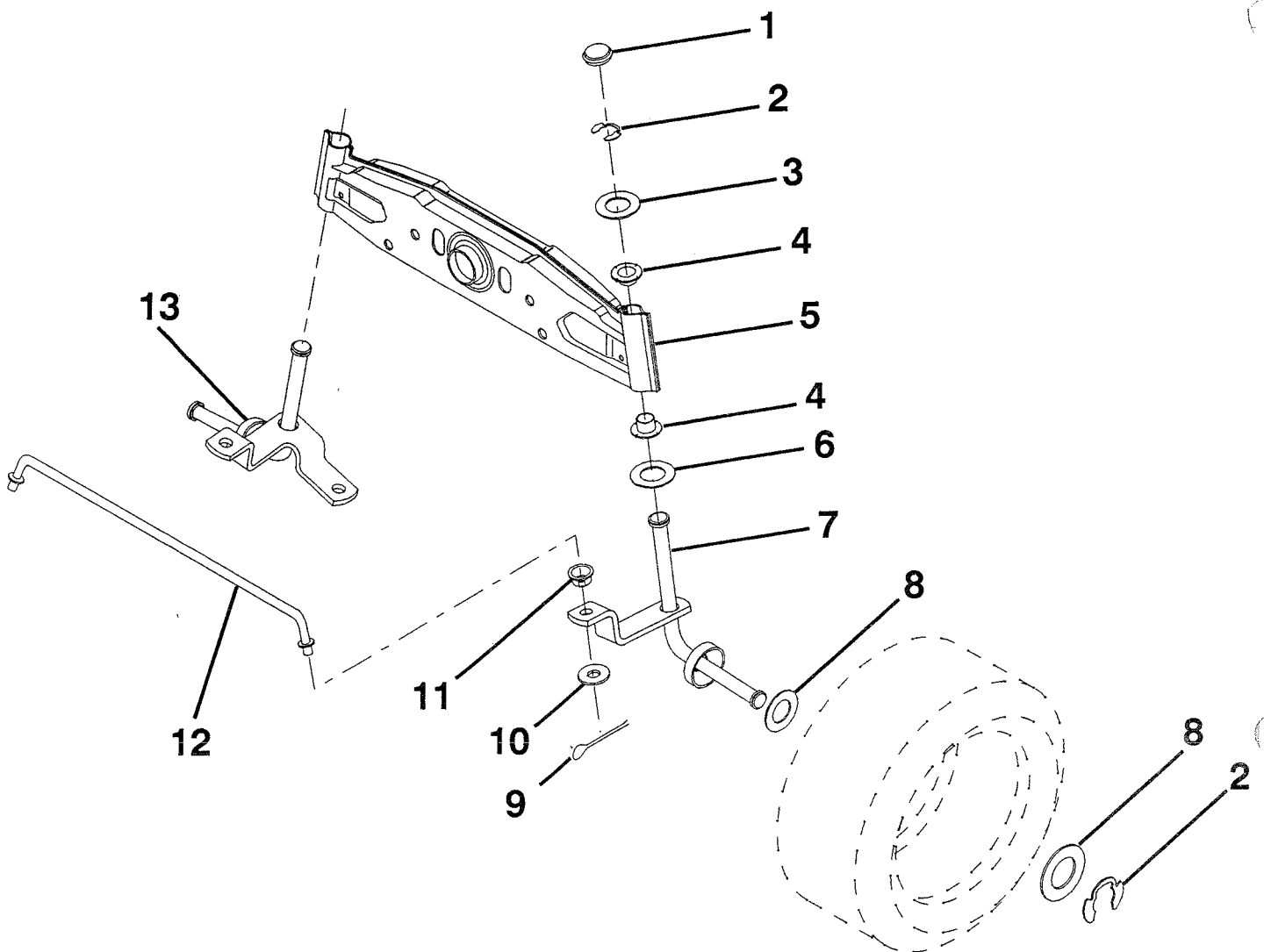
NOTE: All component dimensions given in U.S. inches
1 inch = 25.4 mm

HARDWARE SHOWN LARGER FOR EASIER IDENTIFICATION

REPAIR PARTS

10.5 HP 36" TRACTOR - - MODEL NUMBER FA10536A

FRONT AXLE



KEY PART NO. NO.

DESCRIPTION

1	532121232	Cap, Spindle
2	812000029	Ring, Clip
3	532121748	Washer 25/32 x 1-5/8 x 16 Gauge
4	532121922	Nyliner
5	532121914	Axle, Front
6	532124931	Bearing, Thrust
7	532121919	Spindle Assembly, R.H.
8	532121749	Washer 25/32 x 1-1/4 x 16 Gauge

KEY PART NO. NO.

DESCRIPTION

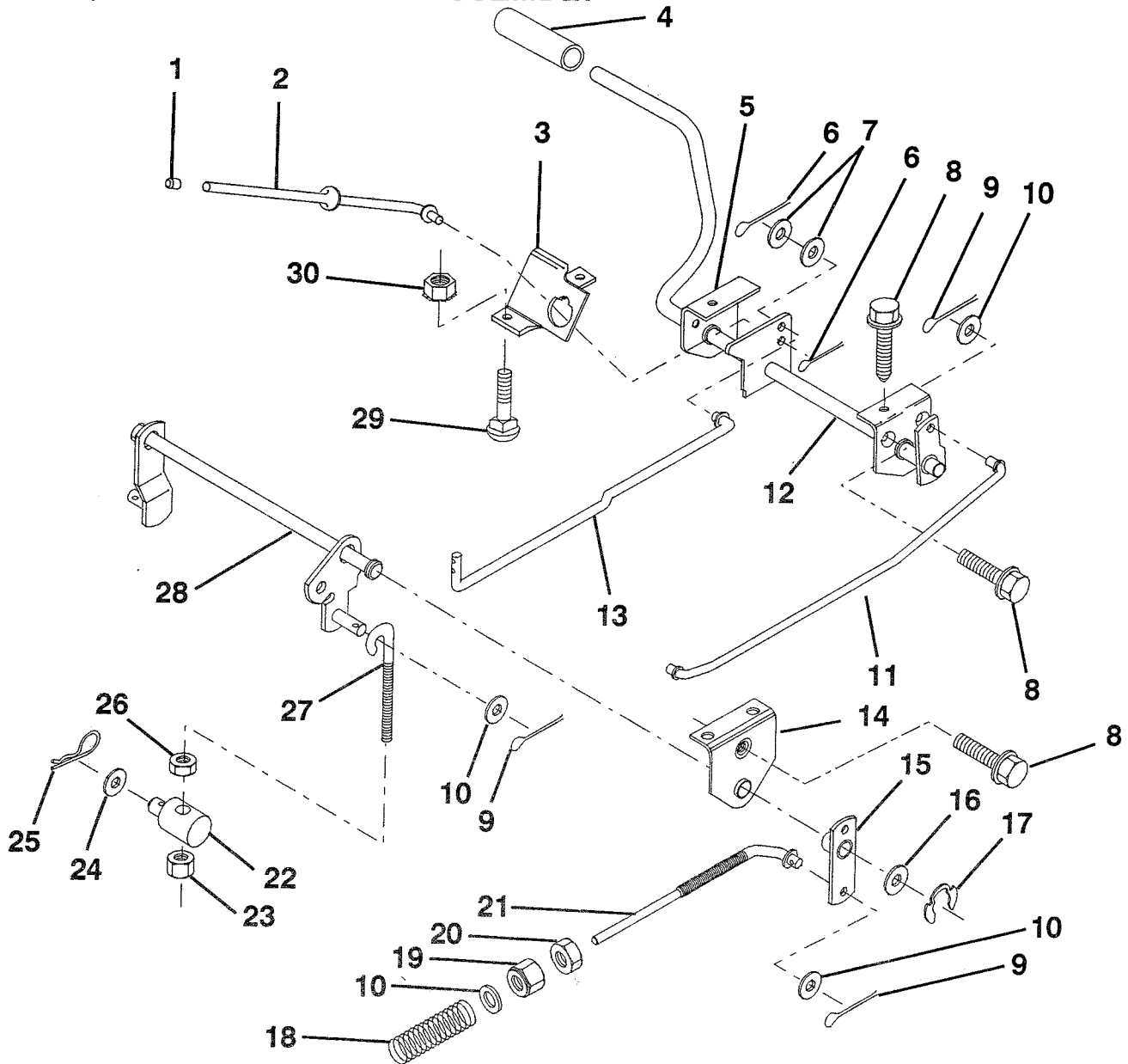
9	876020412	Pin, Cotter 1/8 x 3/4
10	819131316	Washer 13/32 x 13/16 x 16 Gauge
11	532126847	Bushing
12	532121924	Rod, Tie
13	532121916	Spindle Assembly, L.H.

NOTE: All component dimensions given in U.S. inches
1 inch = 25.4 mm

HARDWARE SHOWN LARGER FOR EASIER IDENTIFICATION

REPAIR PARTS

10.5 HP 36" TRACTOR - - MODEL NUMBER FA10536A BRAKE / REAR MOWER LIFT ASSEMBLY



KEY PART NO. NO.

1	532071673	Cap, Plunger
2	532123436	Rod, Parking Brake
3	532123437	Bracket, Parking Brake
4	532008156	Cover, Pedal
5	532122504	Bracket, Clutch/Brake Pedal, L.H.
6	876020312	Pin, Cotter 3/32 x 3/4
7	819131016	Washer 13/32 x 5/8 x 16 Gauge
8	817490508	Screw, Hex Head, Thd., Roll. 5/16-18 x 1/2
9	876020412	Pin, Cotter 1/8 x 3/4
10	819131316	Washer 13/32 x 13/16 x 16 Gauge
11	532123543	Rod, Brake, Front
12	532129567	Assembly, Clutch/Brake Pedal
13	532123394	Rod, Clutch
14	532121978	Bracket, Lift Shaft
15	532123641	Assembly, Brake, Pivot, Arm
16	819251816	Washer 25/32 x 1-1/8 x 16 Gauge

KEY PART NO. NO.

17	812000034	Ring, Klip
18	532106888	Spring, Brake Rod
19	873800600	Locknut, Hex with Washer Insert 3/8-16 UNC
20	873350600	Nut, Hex, Jam 3/8-16 UNC
21	532131460	Rod, Brake, Rear
22	532127378	Trunnion, Lift
23	873680600	Nut, Crownlock 3/8-16 UNC
24	819132012	Washer 13/32 x 1-1/4 x 12 Gauge
25	532124961	Spring, Retainer
26	873930600	Nut, Centerlock 3/8-16 UNC
27	532127369	Link, Threaded
28	532127358	Assembly, Rear Mower Lift
29	872110506	Bolt, Carriage 5/16-18 UNC x 3/4
30	873510500	Nut, Hex, Keps 5/16-16 UNC

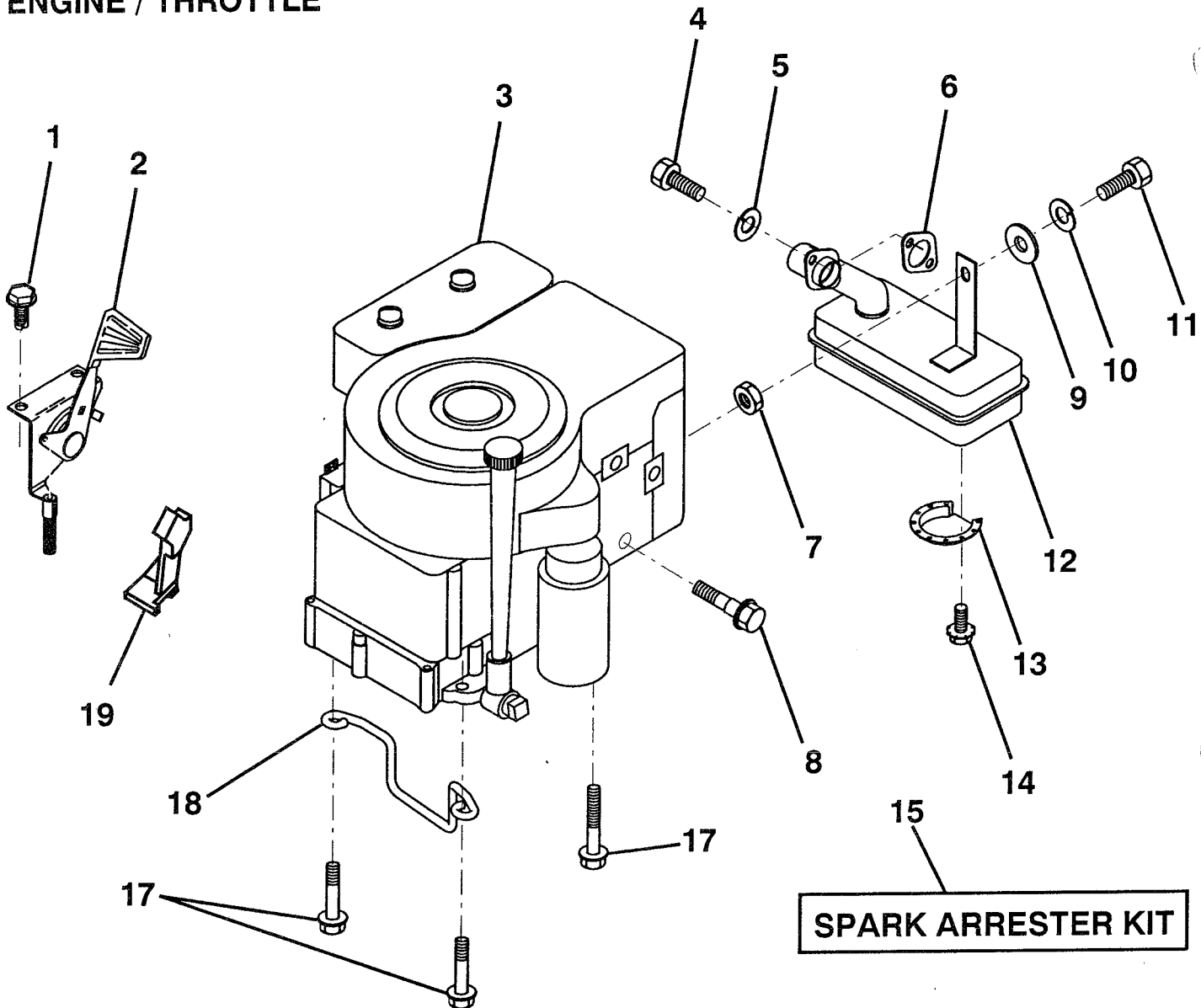
NOTE: All component dimensions given in U.S. inches
1 inch = 25.4 mm

HARDWARE SHOWN LARGER FOR EASIER IDENTIFICATION

REPAIR PARTS

10.5 HP 36" TRACTOR - - MODEL NUMBER FA10536A

ENGINE / THROTTLE



KEY PART NO. NO.

DESCRIPTION

1	817720408	Screw, Hex Head, Thread Cutting 1/4-20 x 1/2
2	532133025	Control, Throttle
3	---	* Engine, Briggs and Stratton, Model Number 257707
4	871070512	Screw, Hex Cap Head 5/16-18 x 3/4
5	810040500	Washer, Lock, Heavy Helical Spring 5/16
6	532125593	Gasket, Exhaust
7	873220500	Nut, Hex, Fin. 5/16-18
8	532121094	Bolt, Shoulder 5/16
9	819101216	Washer 5/16 x 3/4 x 16
10	810040400	Washer, Lock, Heavy Helical Spring 1/4

KEY PART NO. NO.

DESCRIPTION

11	874780416	Bolt, Hex, Fin. 1/4-20 UNC x 1
12	532123676	Muffler
13	532101326	Deflector, Muffler
14	817030808	Screw, Spiderlock, Hex Head #8 x 1/2 ABTPS
15	532137180	Arrester, Spark (Optional Equipment)
17	817490624	Screw, Hex Washer Head, Thd., Roll. 3/8-16 x 1-1/2
18	532126636	Keeper, Ground Drive Belt
19	532127951	Stop, Throttle

*Order from Briggs & Stratton Corporation

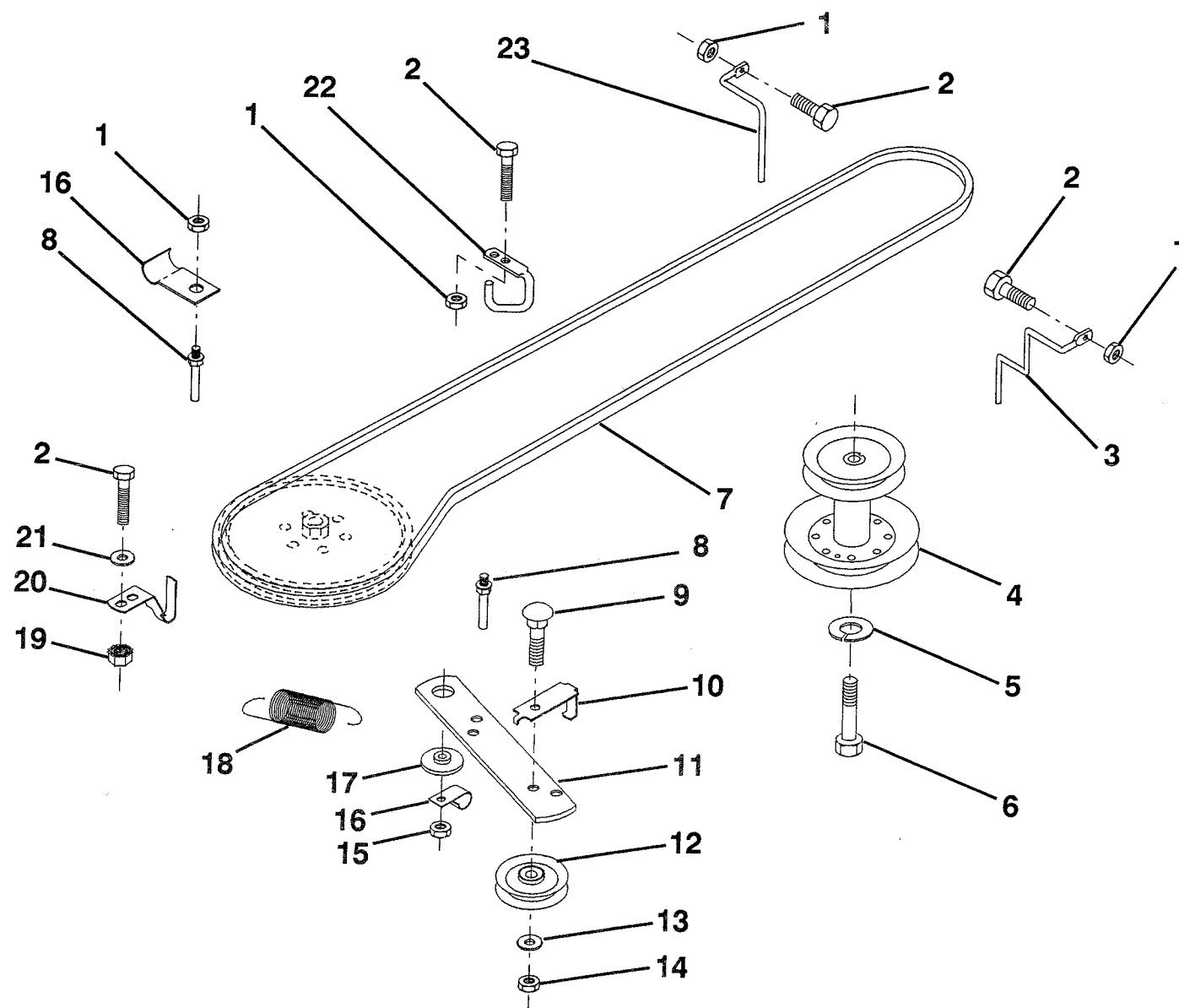
NOTE: All component dimensions given in U.S. inches
1 inch = 25.4 mm

HARDWARE SHOWN LARGER FOR EASIER IDENTIFICATION

REPAIR PARTS

10.5 HP 36" TRACTOR - - MODEL NUMBER FA10536A

GROUND DRIVE



KEY PART NO. NO.

1	873680500	Nut, Crownlock 5/16-18
2	874760512	Bolt, Hex Head 5/16-18 UNC x 3/4
3	532131205	Keeper, Mower Drive Belt, R.H.
4	532134828	Pulley, Engine
5	810040700	Washer, Lock 7/16
6	871170744	Bolt, Hex Head, Fin. 7/16-20
7	532126520	Traction, V-Belt Drive
8	532123405	Keeper, T/A, Ground Drive Belt
9	872140612	Bolt, Carriage 3/8-16 UNC x 1-1/2
10	532123396	Keeper, Belt, Ground Drive Idler
11	532123395	Clutch Arm, Ground Drive
12	532004859	Idler, Flat
13	819131316	Washer 13/32 x 13/16 x 16 Gauge

KEY PART NO. NO.

14	873930600	Nut, Centerlock 3/8-16 UNC
15	873680600	Nut, Crownlock 3/8-16 UNC
16	532126471	Clip, Insulated
17	532122052	Spacer, Retainer
18	532131459	Spring, Extension
19	873510500	Nut, Hex, Keps 5/16-18 UNC
20	532123891	Keeper, T/A, Ground Drive Belt
21	819111016	Washer 11/32 x 5/8 x 16 Gauge
22	532123404	Keeper, Chassis, Ground Drive Belt
23	532131204	Keeper, Mower Drive, L.H.

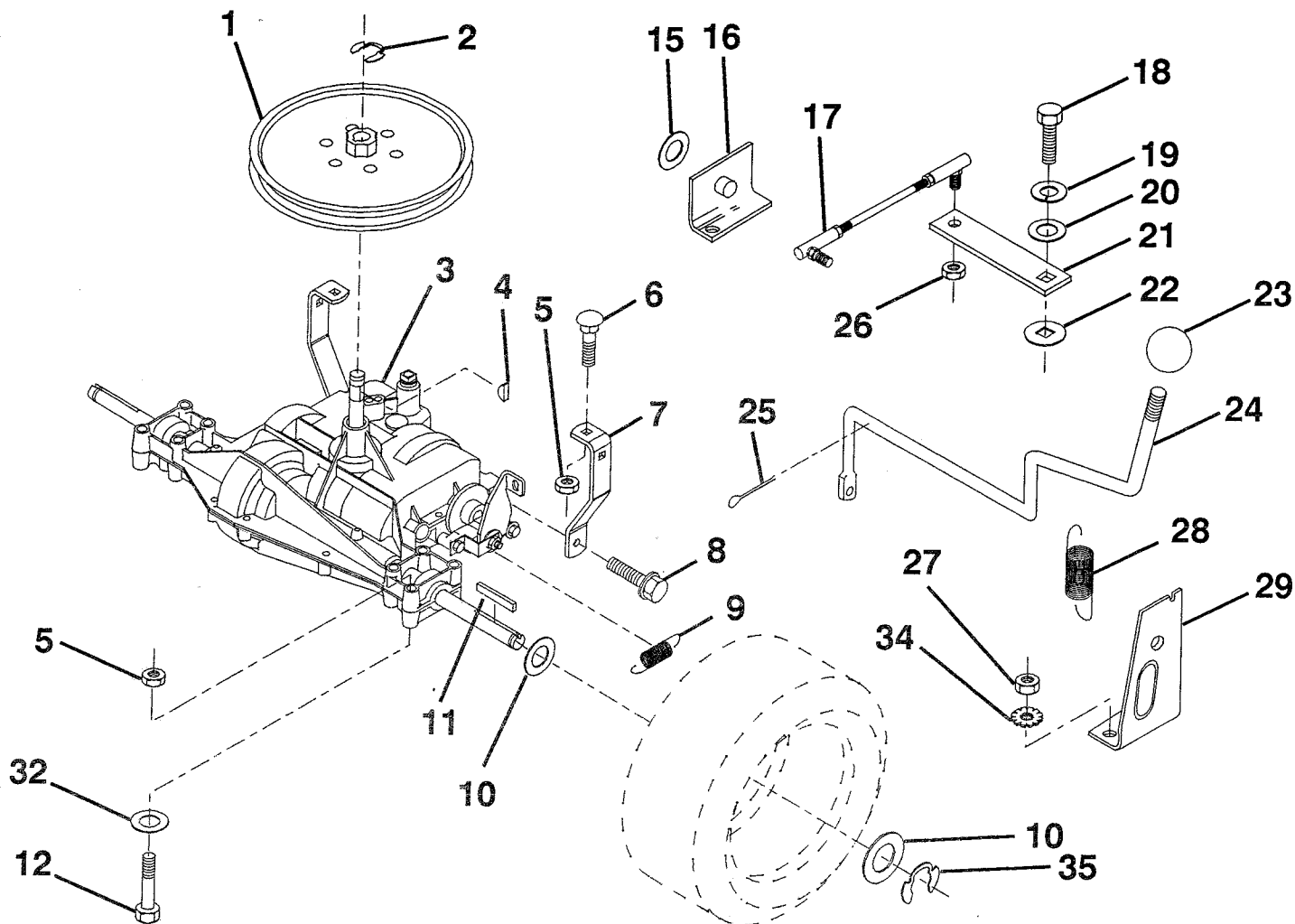
NOTE: All component dimensions given in U.S. inches
1 inch = 25.4 mm

HARDWARE SHOWN LARGER FOR EASIER IDENTIFICATION

REPAIR PARTS

10.5 HP 36" TRACTOR - - MODEL NUMBER FA10536A

TRANSAXLE



KEY PART NO. NO.

DESCRIPTION

1	532123385	Pulley
2	812000028	Ring, Retainer
3	- - - - -	Transaxle, Peerless, 5 Speed, Model Number 930-027
4	532125096	Key, Woodruff #9
5	873680500	Nut, Crownlock 5/16-18
6	872140506	Bolt, Carriage 5/16-18 UNC x 3/4
7	532123378	Strap, Torque
8	817490512	Screw 5/16-18 x 3/4
9	532110422	Spring, Brake
10	532121749	Washer 25/32 x 1-1/4 x 16 Gauge
11	532123583	Key, Square
12	874760540	Bolt, Hex, Fin. 5/16-18 x 2-1/2
13	819171616	Washer 17/32 x 1 x 16 Gauge
14	532124600	Support, Shift Handle, L.H.
15	532126293	Link, Shift
16	871040412	Bolt, Hex Head, Fin. 1/4-28 UNF x 3/4 Grade 8

KEY PART NO. NO.

DESCRIPTION

17	810040400	Washer, Lock 1/4
18	819091210	Washer 9/32 x 3/4 x 10 Gauge
19	532126292	Arm, Shift
20	532105701	Washer, Shift Plate
21	532106933	Knob, Round
22	532128215	Rod, Shift
23	876020416	Pin, Cotter 1/8 x 1
24	873810500	Nut, Hex, Nylon 5/16-24 UNF
25	873510500	Nut, Hex, Keps 5/16-18
26	532128085	Spring, Extension
27	532128084	Support, Shift Handle, R.H.
28	819111116	Washer 11/32 x 11/16 x 16 Gauge
29	811050500	Washer, Lock, External Tooth 5/16
30	812000001	E-Ring

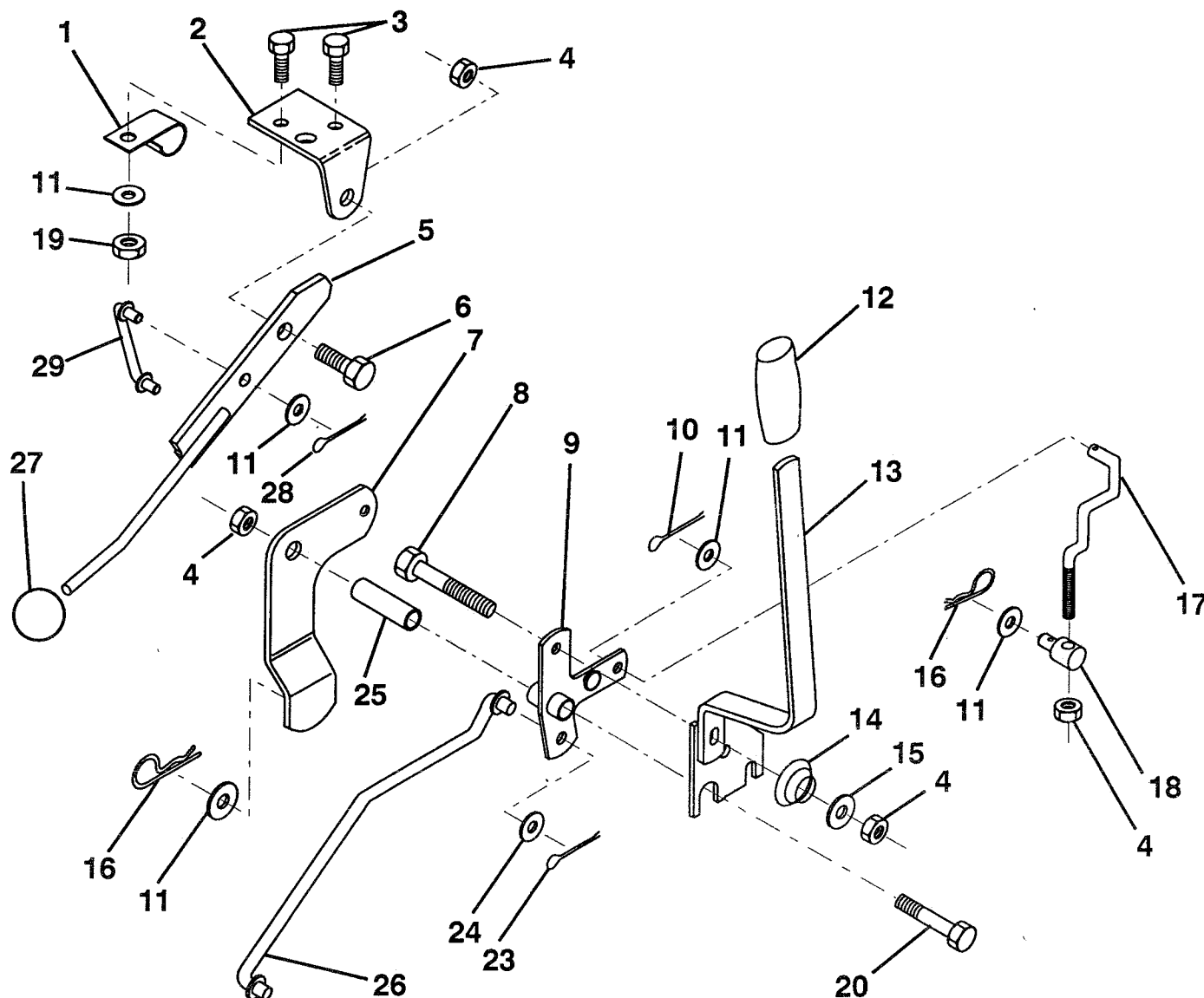
NOTE: All component dimensions given in U.S. inches
1 inch = 25.4 mm

HARDWARE SHOWN LARGER FOR EASIER IDENTIFICATION

REPAIR PARTS

10.5 HP 36" TRACTOR - - MODEL NUMBER FA10536A

MOWER LIFT LEVER



KEY PART NO. NO.

DESCRIPTION

1	532126470	Clip, Insulated
2	532122018	Bracket, Mower Clutch
3	874780408	Bolt, Hex Head, Fin. 1/4-20 UNC x 1/2 Grade 5
4	873680600	Nut, Crownlock 3/8-16 UNC
5	532123417	Assembly, Clutch Lever
6	532106451	Bolt, Shoulder
7	532135371	Assembly, Mower Clutch Arm
8	874760636	Bolt, Hex Head 3/8-16 UNC x 2-1/4
9	532121930	Bracket, Lift Assembly
10	876020412	Pin, Cotter 1/8 x 3/4
11	819131316	Washer 13/32 x 13/16 x 16 Gauge
12	532122027	Grip, Handle
13	532127028	Assembly, Lift Handle
14	532123496	Spring, Compression
15	819131212	Washer 13/32 x 3/4 x 12 Gauge

KEY PART NO. NO.

DESCRIPTION

16	532124961	Retainer, Spring
17	532127359	Link, Front Lift
18	532133205	Trunnion, Threaded 3/8-16
19	873680400	Nut, Crownlock 1/4-20
20	874760644	Bolt, Hex Head, Fin. 3/8-16 UNC x 2-3/4
23	876020416	Pin, Cotter 1/8 x 1
24	819171616	Washer 17/32 x 1 x 16 Gauge
25	532121933	Tube, Spacer
26	532121934	Rod, Mower Lift
27	532106933	Knob
28	876020312	Pin, Cotter 3/32 x 3/4
29	532131655	Link, Mower Clutch

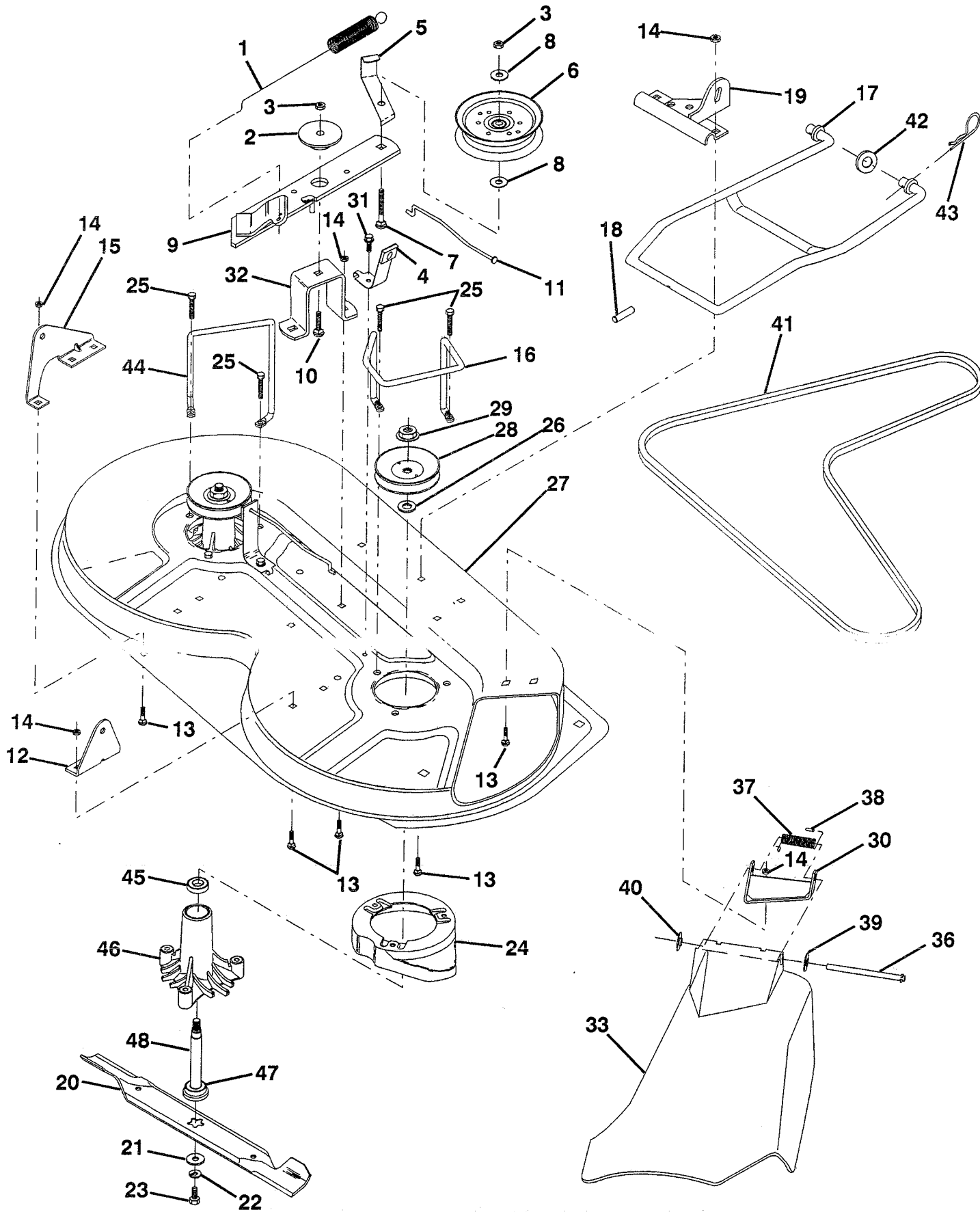
NOTE: All component dimensions given in U.S. inches
1 inch = 25.4 mm

HARDWARE SHOWN LARGER FOR EASIER IDENTIFICATION

REPAIR PARTS

10.5 HP 36" TRACTOR - - MODEL NUMBER FA10536A

MOWER DECK



REPAIR PARTS

10.5 HP 36" TRACTOR - - MODEL NUMBER FA10536A MOWER DECK

KEY PART NO. NO.	DESCRIPTION
1 532127743	Spring, Mower Clutch
2 532122052	Spacer, Retainer
3 873680600	Nut, Crownlock
4 532130840	Brake Assembly
5 532131251	Guide, Belt Idler
6 532121316	Pulley, Flat Idler
7 872110616	Bolt, Carriage 3/8-16 x 2 Grade 5
8 819131410	Washer 13/21 x 7/8 x 10 Gauge
9 532127744	Idler Arm Assembly, Mower
10 872110608	Bolt, Carriage 3/8-16 x 1
11 532130841	Rod, Brake
12 532127356	Bracket, Lift, Rear, R.H.
13 872140505	Bolt, Carriage 5/16-18 x 5/8
14 873680500	Nut, Crownlock 5/16-18
15 532127357	Bracket, Lift, Rear, L.H.
16 532130837	Keeper, Belt, R.H.
17 532128508	Link Assembly, Mower Stabilizer
18 532128511	Pin, Drive
19 532127380	Bracket Assembly, Front
20 532127841	Blade
21 532129962	Washer, Hardened
22 810030600	Washer, Lock 3/8
23 532850857	Bolt, Hex 3/8-24 x 1-1/4 Grade 8
24 532128961	Stripper
25 532078158	Bolt, Hex Head 5/16-18 x 1-1/4
26 532129963	Washer .150 Thick
27 532129983	Deck Assembly
28 532129207	Pulley, Mandrell
29 873050900	Nut, Flangelock 9/16
30 532136631	Bracket Assembly, Deflector
31 817490508	Screw, Hex Washer Head, Thd., Roll. 5/16-18 x 1/2
32 532122051	Arm, Support Idler, Mower
33 532131560	Deflector
36 532121980	Rod, Hinge
37 532123713	Spring, Torsion Deflector
38 532105304	Cap, Sleeve
39 819111016	Washer 11/32 x 5/8 x 16 Gauge
40 532110452	Pushnut
41 532131264	V-Belt
42 819171616	Washer 11/32 x 5/8 16 Gauge
43 532124660	Retainer, Spring
44 532130836	Keeper, L.H.
45 532110485	Bearing
46 532128774	Mandrel Housing, Vented
47 532129895	Bearing
48 532133172	Shaft, Mandrel (Includes Key #47)
-- 532130794	Mandrel Assembly (Includes Key Numbers 22, 23, 26, 29 and 45-48)
-- 532136317	Mower Deck, Complete

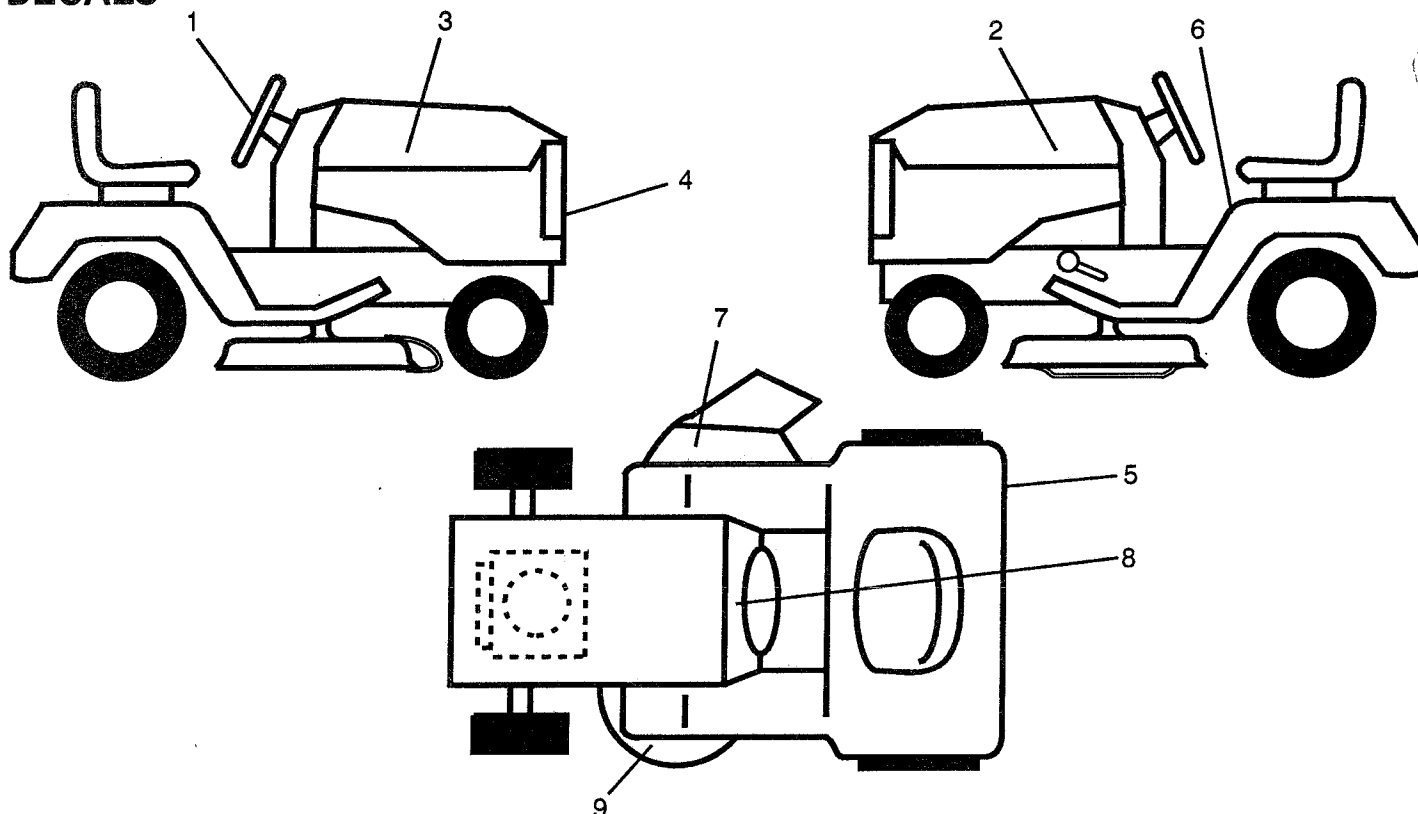
NOTE: All component dimensions given in U.S. inches
1 inch = 25.4 mm

HARDWARE SHOWN LARGER FOR EASIER IDENTIFICATION

REPAIR PARTS

10.5 HP 36" TRACTOR - - MODEL NUMBER FA10536A

DECALS



KEY PART NO. NO.

DESCRIPTION

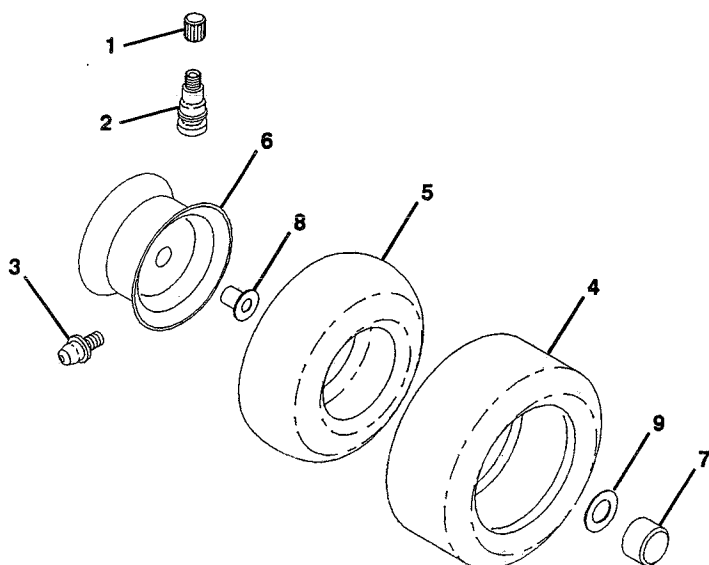
1	532126430	Decal, Logo, Steering Wheel Cap
2	532136953	Decal, Hood, L.H.
3	532136954	Decal, Hood, R.H.
4	532126429	Decal, Logo, Grill
5	532124433	Decal, 80 DBA

KEY PART NO. NO.

DESCRIPTION

6	532133796	Decal, Instruction, Warning
7	532121343	Decal, Warning, Cut Finger
8	532126712	Decal, Instruction/Operation
9	532125087	Decal, Rotating Blades
--	532137222	Manual, Operator's
--	532136880	Manual, Repair Parts

WHEELS



KEY PART NO. NO.

DESCRIPTION

1	532059192	Cap, Valve
2	532065139	Stem, Valve
3	532124957	Fitting, Grease
4	532124142	Tire, Front
	532124143	Tire, Rear
5	532059904	Tube, Front Tire (Not Supplied)
	532008134	Tube, Rear Tire (Not Supplied)
6	532124809	Rim, Front
	532124805	Rim, Rear
7	532104757	Cap, Axle, Front and Rear
8	532124959	Bearing, Flange (Front only)
9	532121748	Washer 35/32 x 1-5/8

NOTE: All component dimensions given in U.S. inches
1 inch = 25.4 mm

HARDWARE SHOWN LARGER FOR EASIER IDENTIFICATION