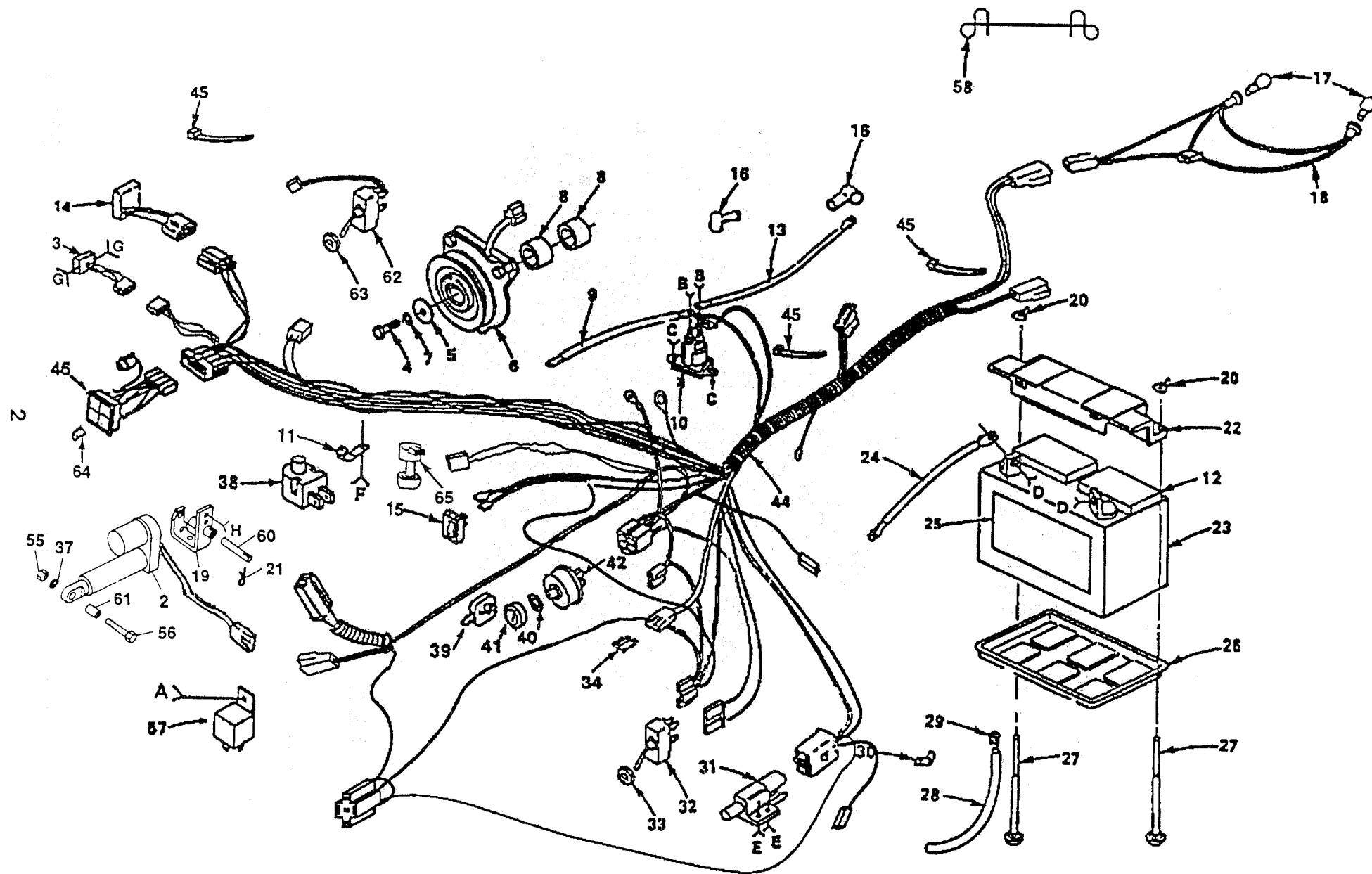


REPAIR PARTS

ELECTRICAL

18 H.P. GARDEN TRACTOR



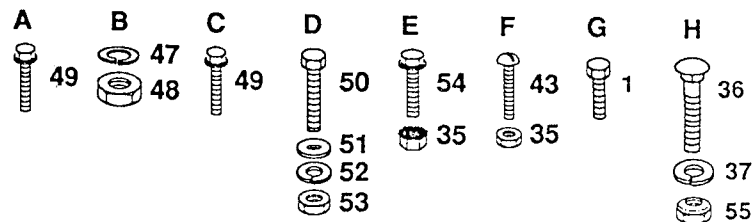
REPAIR PARTS

18 H.P. GARDEN TRACTOR

ELECTRICAL

KEY PART NO. NO.	DESCRIPTION
1 817011008	Screw 10 - 24 x 1/2
2 532124371	Actuator, Electric
3 532110940	Meter, Hour
4 874610724	Bolt-Hex 7/16 - 20 x 1 - 1/2 GR 5
5 532126197	Washer
6 532109550	Clutch - Electric
7 810040700	Washer - Lock 7/16
8 532106367	Spacer - Clutch
9 532124770	Cable - Battery
10 532109081	Solenoid
11 532004171	Clip - Insulated
12 532121264	Battery Caps
13 532005115	Cable - Starter
14 532109554	Sensor, Low Voltage
15 532110712	Switch - Light
16 532000719	Cover - Terminal
17 532124893	Bulb - Light
18 532110859	Harness - Light Socket
19 532124867	Bracket Assembly, Actuator
20 532123198	Nut Wing 1/4 - 20
21 532004940	Spring, Retainer
22 532102476	Guard - Terminal
23 532121537	Battery
24 532124773	Cable Ground
25 532121549	Decal, Battery
26 532124886	Tray - Battery
27 872240460	Bolt - Carriage 1/4 - 20 x 7- 1/2
28 532100541	Tube- Plastic
29 532109596	Clamp- Hose
30 532100207	Clip
31 532104445	Switch- Interlock
32 532126018	Switch - P.T.O.
33 532124932	Nut - Hex
34 532006347	Fuse - 30 Amp
35 873951000	Nut - Keps No. 10 - 32
36 872110608	Bolt, Carriage 3/8 - 16 x 1
37 810040600	Washer, Lock 3/8
38 532121305	Switch, Seat
39 532122147	Key.
40 532109788	Nut - Ignition

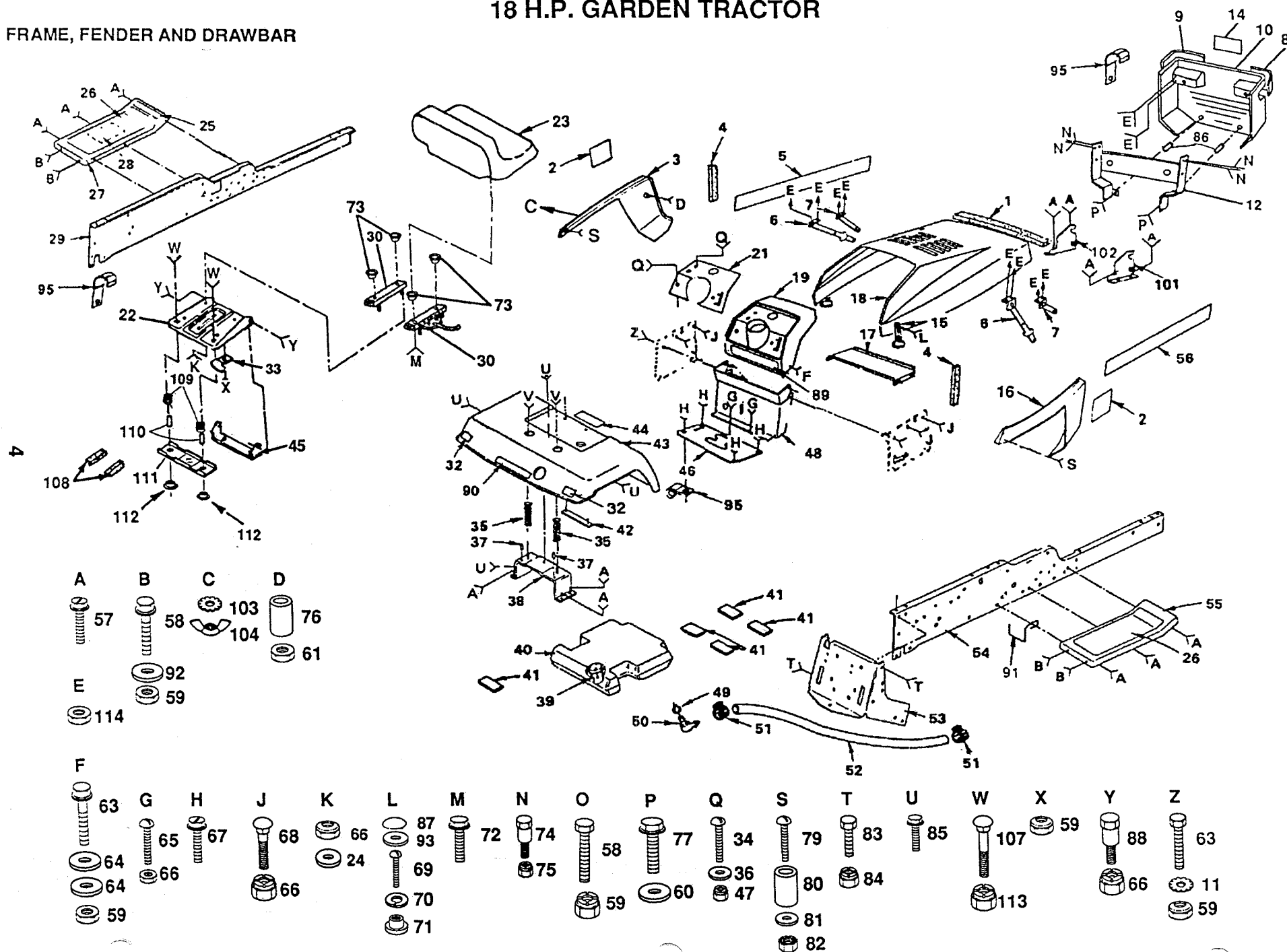
KEY PART NO. NO.	DESCRIPTION
41 532109787	Bezel, Ignition
42 532125104	Switch - Ignition
43 874641008	Screw-Slot-Pan HD 10 - 32 x 1/2
44 532124047	Harness - Ignition
45 532124756	Cable Tie
46 532126519	Light Package
47 810090400	Lockwasher 1/4
48 873350400	Nut, Hex Jam 1/4 - 20
49 817190408	Screw - Hex Washer Hd. Cutting 1/4-20 x 1/2
50 874760412	Bolt - Hex Hd. 1/4 - 20 x 3/4
51 819091016	Washer 9/32 x 5/8 x 16 Ga.
52 810040400	Lockwasher 1/4
53 873220400	Nut-Hex 1/4 - 20
54 871031008	Screw- Hex Washer Hd. No. 10-32 x 1 - 1/2
55 873220600	Nut, Fin Hex 3/8 - 16
56 874520636	Bolt, Fin Hex 3/8 - 16 x 2 1/4
57 532109748	Assembly - Relay
58 532121465	Tie, Wire
60 532007085	Pin, Actuator
61 532005950	Tube .384 x 1/2 x 1 1/4
62 532126289	Switch Assembly, Lift
63 532007319	Washer, Lock
64 532110143	Bulb, Dashboard, Light
65 532126487	Sensor, Low Fuel
532124570	Operator's Manual (English)
532124571	Owner's Manual (French)
532126893	Parts Manual (English)
532101539	Sheet-Insruction,Tractor 15° Slope (English)
532101572	Sheet-Insruction,Tractor 15° Slope (French)
532123469	Owner's Manual, Kohler, Engine (English)
532123470	Owner's Manual, Kohler, Engine (French)



REPAIR PARTS

18 H.P. GARDEN TRACTOR

FRAME, FENDER AND DRAWBAR



REPAIR PARTS

FRAME, FENDER AND DRAWBAR

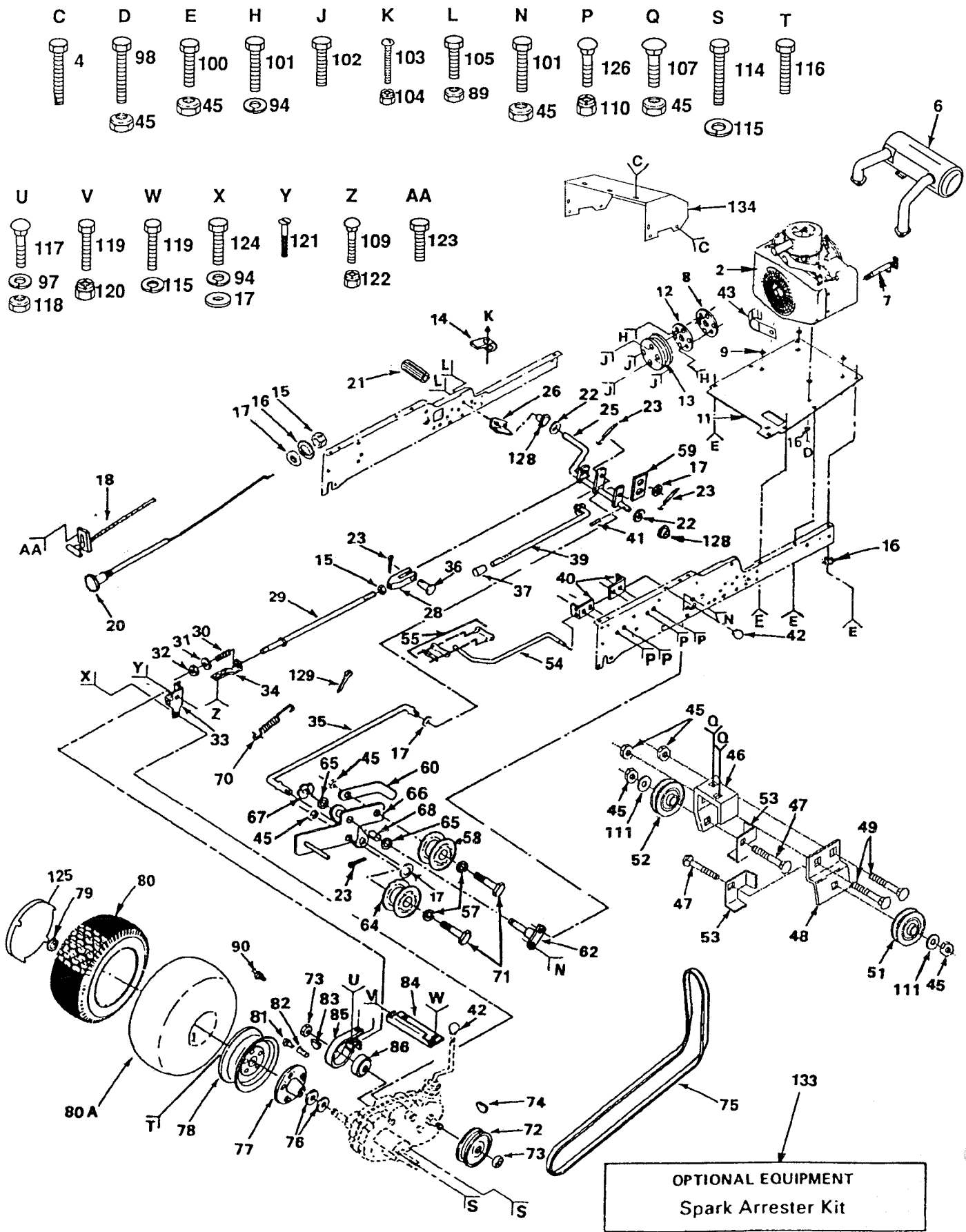
18 HP GARDEN TRACTOR

KEY PART NO. NO.	DESCRIPTION	KEY PART NO. NO.	DESCRIPTION	KEY PART NO. NO.	DESCRIPTION
1 532109458	Strip, Foam	40 532106020	Tank-Fuel	75 873680400	Nut-Crownlock 1/4-20
2 532124488	Decal-Hood, GTK 18	41 532106082	Pad-Spacer	76 532001260	Spacer
3 532125009	Panel-Side, L.H.	42 532105511	Strap-Fender	77 874760424	Bolt, Fin Hex 1/4 - 20 x 1 1/2
4 532106088	Strip-Foam	43 532124974	Fender	79 874981020	Screw-Mach Cr. Pan No.
5 532124480	Decal-Hood, L.H.	44 532120822	Decal-Caution		10-24 x 1-1/4
6 532106784	Strap Assembly-Hinge, Rear	45 532126656	Bracket-Pivot, Seat	80 532007206	Spacer-Split No. 10 x 3/4
7 532104618	Strap Assembly-Hinge, Front	46 532124837	Cover, Shift-Gate	81 819070818	Washer 7/32 x 1/2 x 18 Ga.
8 532124251	Lens R.H.	47 873510500	Nut, Keps 5/16 - 18	82 873731000	Nut-Keps No 10-24
9 532124250	Lens L.H.	48 532104608	Dash Assembly	83 874760716	Bolt-Hex 7/16-14 x 1
10 532124573	Grill Assembly	49 532003645	Bushing	84 873680700	Nut-Lock 7/16-14
11 811050600	Washer, Lock Ext. Tooth 3/8	50 532008710	Stem-Tank Fuel	85 817490608	Screw-Hex Washer Thread
12 532124574	Support-Grill, R.H.	51 532123487	Clamp-Hose		Rolling 3/8 x 16 x 1/2
14 532124483	Decal, Grill, Husqvarna	52 532124703	Fuel Line	86 532121249	Spacer
15 532109808	Latch-Hood	53 532007982	Drawbar	87 532110356	Cap, Snap
16 532125008	Panel-Side, RH.	54 532110892	Rail-Frame-RH	88 532105529	Bolt-Shoulder
17 532007985	Support-Battery	55 532125036	Footrest-RH	89 532108813	Decal-Caution
18 532125007	Hood	56 532124481	Decal-Hood RH	90 532124484	Decal-Fender
19 532124182	Dashboard	57 817490612	Screw-Hex Washer Thread	91 532105500	Retainer, Belt, Lower
21 532124772	Dashplate		Rolling 3/8-16 x 3/4	92 819131312	Washer 13/32 x 13/16 x 17
22 532124294	Pan-Seat	58 874760612	Bolt-Hex 3/8-16 x 3/4		Ga.
23 532124187	Seat	59 873680600	Nut-Lock 3/8-16	93 532110357	Washer, Snap Cap
24 819111610	Washer 11/32 x 1 x 10 Ga.	60 819091216	Washer 9/32 x 3/4 x 16 Ga	95 532004171	Clip, Insulated
25 532101892	Decal-Clutch/Brake	61 873220400	Nut-Hex 1/4-20	101 532110853	Bracket Assy Pivot Frame
26 532108256	Pad-Footrest	63 874760616	Bolt-Hex 3/8-16 x 1		R.H.
27 532124722	Footrest-L.H.	64 819131316	Washer 13/32 x 13/16 x 16	102 532110852	Bracket Assy Pivot Frame
28 532106868	Decal-Drive Belt Schematic		Ga.		L.H.
29 532110893	Rail-Frame-L.H.	65 874180512	Screw-Mach. Cr Thrd. 5/16-	103 811030400	Washer-Lock 1/4-20
30 532124428	Slide, Seat Set		18 x 3/4	104 873490400	Nut Wing 1/4-20
32 532106202	Reflector-Tailight	66 873680500	Nut-Crownlock 5/16-18	106 819131614	Washer, 13/32 x 1 x 14 Ga.
33 532124996	Clip-Insulated	67 817240408	Screw-Hex Washer	107 872170410	Bolt-Carr, 1/4-20 x 1-1/4
34 874180512	Screw, Mach. Hd. 5/16 - 18 x		ThrdCutting 1/4-20 x 1/2	108 532121251	Foam Strip
	3/4	68 872140506	Bolt-Carriage 5/16-18 x 3/4	109 532123740	Spring, Compression
35 532124181	Spring-Compression	69 874191008	Screw-Cr. Pan. Mach.	110 532121249	Spacer, Split
36 819111116	Washer, 11/32 x 11/16 x 16		No.10-24 x 1/2	111 532121246	Bracket, Switch Mount
	Ga	70 810071000	Washer, Lock No. 10	112 532121248	Bushing, Snap
37 532105531	Nut-Push	71 532125004	Nut-Weld	113 532123976	Nut-Flange Lock 1/4-20
38 532105509	Bracket-Fender	72 817190516	Screw-Hex 5/16 - 18 x 1	114 873510400	Nut-Hex, 1/4-20
39 532123549	Cap-Fuel	73 532124427	Spacer		
		74 532123481	Bolt-Shoulder 1/4-20		

REPAIR PARTS

18 H.P. GARDEN TRACTOR

GROUND DRIVE



REPAIR PARTS

18 HP GARDEN TRACTOR

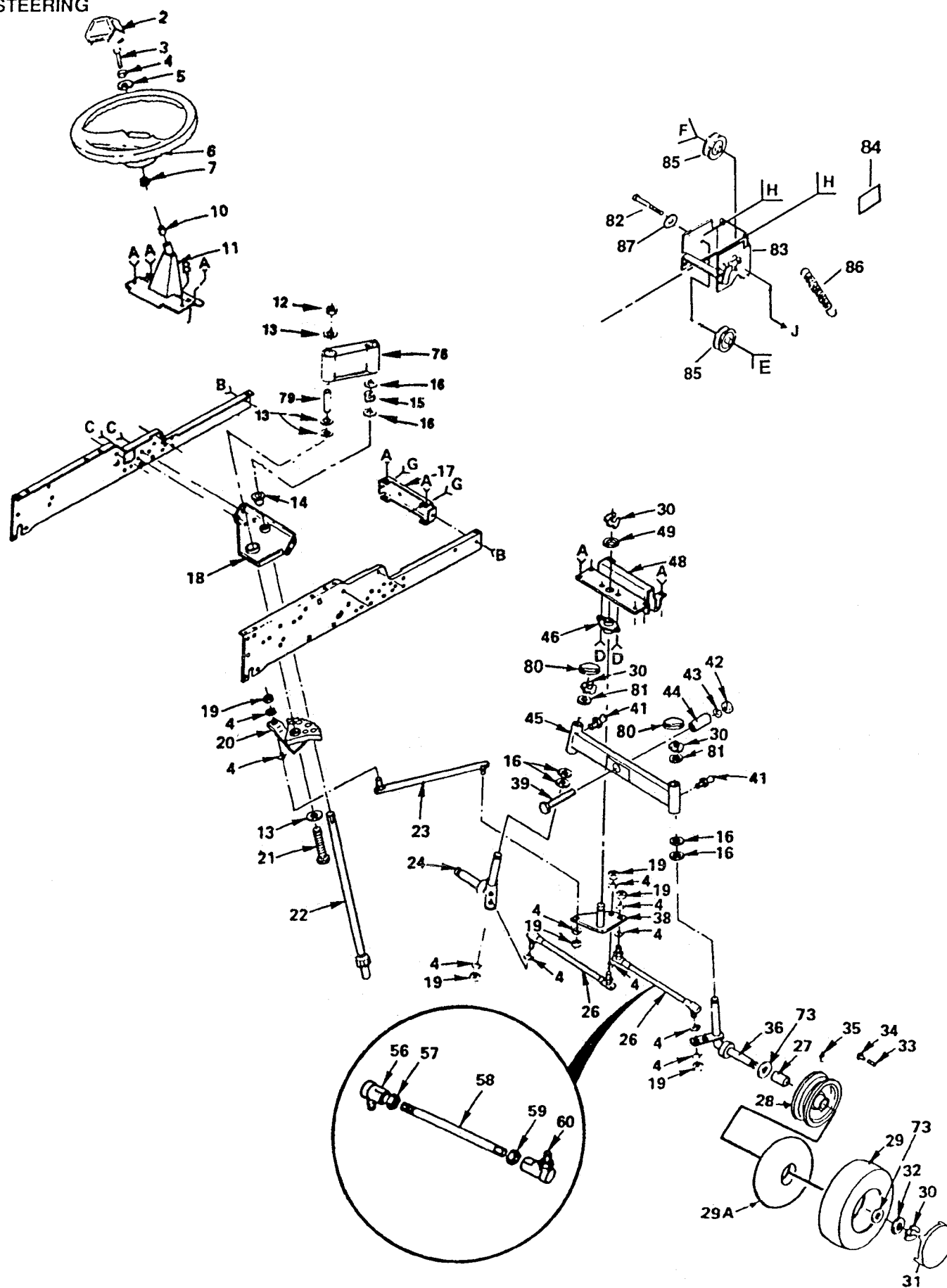
GROUND DRIVE

KEY PART NO. NO.	DESCRIPTION	KEY PART NO. NO.	DESCRIPTION
2 532124276	Engine - 18 H.P. Kohler	67 812000039	Klip, Ring
4 817720408	Screw, Hex Thd. Cut 1/4 - 20 x 1/2	68 532105706	Bearing, Idler
6 532124532	Muffler - Exhaust	70 532121357	Spring, Extension
7 532009767	Oil Drain Valve	71 874760628	Bolt, Hex 3/8-16 x 1-3/4
8 532110947	Chaff Guard	72 532120332	Pulley, Transaxle
9 532110869	Spacer	73 532009204	Nut, Lock, 1/2-20
11 532110867	Base - Engine	74 532124708	Key, Woodruff 3/16 x 5/8
12 532104577	Adapter	75 532110883	V-Belt
13 532121355	Pulley - Ground Drive	76 532007563	Washer, Thrust, Axle
14 532005304	Actuator- Switch, Interlock	77 532124683	Bushing Assembly and Wheel Hub
15 873610600	Nut - Hex, 3/8-24	78 532124866	Rim Assy. Rear
16 811050600	Washer, Lock Ext. Tooth, 3/8	79 812000034	Klip, Ring
17 819131316	Washer, 13/32 x 13/16 x 16 Ga.	80 532004607	Tire, Rear
18 532121467	Control, Throttle	80 A 532007154	Tube, Rear(Not furnished with tractor)
20 532121470	Control, Choke	81 532059192	Cap, Valve
21 532124872	Cover, Pedal	82 532065139	Stem, Valve
22 532121749	Washer, 25/32 x 1-1/4 x 16 Ga.	83 532125096	Key, Woodruff No. 9(3/16 x 3/4)
23 876020312	Pin, Cotter, 3/32 x 3/4	84 532120404	Bracket, Support, Transaxle
25 532104375	Shaft, Foot Pedal	85 532101122	Band, Brake
26 532104601	Bracket, Interlock	86 532000214	Drum, Brake
28 532100604	Yoke	89 873680400	Nut, Crownlock 1/4-20
29 532005308	Rod, Brake	90 532124860	Fitting, Grease
30 532007241	Spring, Compression	94 810040600	Lockwasher, 3/8
31 819131614	Washer, 13/32 x 1 x 14 Ga.	97 810040400	Lockwasher, 1/4
32 873530600	Nut-Lock, 3/8- 24	98 874780620	Bolt - Hex 3/8-16 x 1-1/4 Gr. 5
33 532124692	Bracket, Brake	100 874760612	Bolt, Hex 3/8-16 x 3/4
34 532124695	Guide, Rod, Brake	101 874780616	Bolt, Hex Head 3/8-16 x 1 Gr. 5
35 532101356	Rod, Clutch	102 817190516	Screw, Hex 5/16-18 x 1
36 532005102	Pin, Clevis	103 874321016	Screw- Fin 10-24 x 1
37 532071673	Cap, Plunger	104 873631000	Nut, Lock No. 10-24
39 532109767	Rod, Parking Brake	105 874760412	Bolt-Hex Head 1/4-20 x 3/4
40 532105598	Bracket, Rod, Shift	107 872110606	Bolt, Carriage 3/8-16 x 3/4 Gr. 5
41 532005142	Pin, Roll, 3/16 x 1-1/4	109 872110506	Bolt, Carriage 5/16-18 x 3/4
42 532121466	Knob	110 873680500	Nut, Lock 5/16-18
43 532004171	Clip, Insulated	111 819131612	Washer, 13/32 x 1 x 12 Ga.
45 873680600	Nut, Lock, 3/8 - 16	114 874760720	Bolt, Hex 7/16-14 x 1-1/4
46 532121063	Bracket, V-Pulley, Drive, Mule	115 810040700	Lockwasher, 7/16
47 872110614	Bolt, Carriage, 3/8 - 16 x 1-3/4	116 532001304	Bolt, Hub
48 532122825	Bracket, Idler, Flat	117 872140405	Bolt, Carriage, 1/4-20 x 5/8
49 872140606	Bolt, Carriage, 3/8 - 16 x 3/4	118 873220400	Nut-Hex 1/4 - 20
51 532102403	Idler, Flat	119 874760716	Bolt-Hex 7/16 - 14 x 1
52 532101344	Pulley, Idler	120 873680700	Nut-Crown Lock 7/16 - 14
53 532122824	Keeper, Belt	121 874370612	Screw, Mach. Udrct. Flat Head, 3/8- 16 x 3/4
54 532122253	Rod - Shift, Hi - Lo	122 532001685	Nut, Lock 5/16-18
55 532122268	Connecting Link, Spring Clip	123 817720410	Screw, Hex 1/4-20 x 1/2
57 819131413	Washer, 13/32 x 7/8 x 13 Ga	124 874760614	Bolt, Hex 3/8-16 x 7/8
58 532104360	Idler, Flat	125 532124579	Cover, Wheel
59 532121358	Retainer, Spring	126 872140506	Bolt-Carriage 5/16-18 x 3/4
60 532121360	Retainer, Belt	128 532110895	Nyliner
62 532101358	Bracket Assembly- Clutch	129 876020816	Pin, Cotter 1/4 x 1
64 532121361	Idler, Grooved	133 532120689	Spark Arrestor Kit
65 532000207	Washer, Hardened	134 532124508	Duct, Exhaust, Upper
66 532121356	Bracket, Clutch W/Bearing (Incl. Key No. 68)		

REPAIR PARTS

18 H.P. GARDEN TRACTOR

STEERING

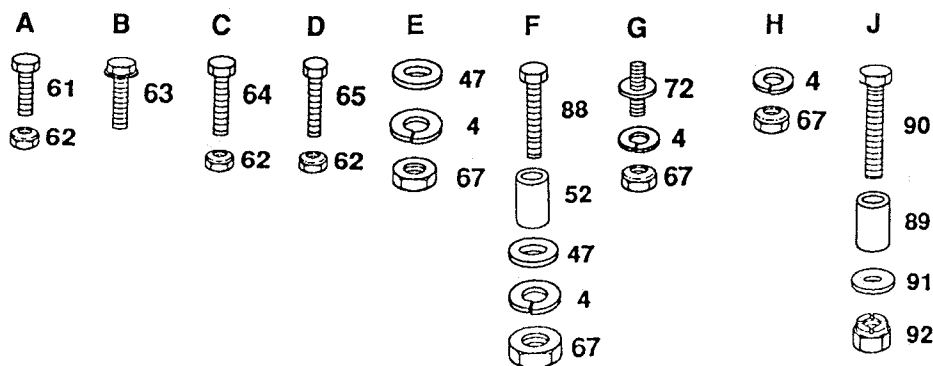


REPAIR PARTS

18 HP GARDEN TRACTOR

STEERING

KEY PART NO. NO.	DESCRIPTION	KEY PART NO. NO.	DESCRIPTION
2 532124416	Insert - Steering Wheel	43 810041000	Washer, Lock 5/8
3 874780616	Bolt - Hex 3/8-16 x 1 Gr. 5	44 532005298	Tube, Pivot, Axle
4 810040600	Washer - Lock 3/8	45 532124868	Axle Assembly, Front
5 819133808	Washer 13/32 x 2- 3/8 x 8 Ga.	46 532005292	Bushing, Bellcrank
6 532124415	Wheel, Steering	47 819131413	Washer 13/32 x 7/8 x 13 Ga.
7 532100711	Adapter, Steering	48 532005284	Bracket, Axle
10 532009038	Bearing	52 532102933	Spacer, Split
11 532101274	Support Assembly, Steering	56 532121161	Joint-Tie Rod - L.H Thread
12 873680800	Nut, Lock 1/2-13	57 873700600	Nut Hex Jam 3/8 - 24 L.H.
13 819172610	Washer 17/32 x 1-5/8 x 10 Ga.	58 532121162	Rod-Tie
14 532104239	Bearing, Flanged	59 873360600	Nut Hex Jam 3/8 - 24
15 812000034	Klip Ring	60 532121160	Joint, Tie Rod - R H. Thread
16 532124931	Bearing, Thrust	61 874760612	Bolt Hex 3/8 -16 x 3/4
17 532005213	Bracket, Frame Front	62 873680600	Nut- Lock 3/8-16
18 532102439	Bracket, Support, Steeri ng	63 817490612	Screw- Hex Wsh.Thdrol. 3/8 -16 x 3/4
19 873610600	Nut, Hex 3/8-24		
20 532120424	Sector Assembly	64 874780616	Bolt-Hex 3/8 -16 x 1 Gr. 5
21 874780880	Bolt - Hex 1/2-13 x 5 Gr. 5	65 874760616	Bolt-Hex 3/8 -16 x 1
22 532104591	Shaft, Steering	67 873220600	Nut-Hex 3/8 -16
23 532110497	Link, Drag	72 532106615	Pin Mounting, Idler Bracket
24 532121168	Spindle, L.H.	73 532121749	Washer, 25/32 x 1-1/4 x 16 Ga.
26 532121159	Rod, Tie (Inc. Key #56-60)	76 532121177	Collar Weld Ass'y.
27 532009040	Bearing	79 532120199	Tube
28 532124864	Rim Assembly - 8" Front	80 532121232	Dust Cap Cover
29 532003938	Tire	81 532121748	Washer 25/32 x 1 - 5/8 x 16 Ga.
29A 532008134	Tube (not furnished with tractor)	82 874760632	Bolt-Hex 3/8 - 16 x 2
30 812000029	Klip Ring	83 532120542	Brkt. Idler
31 532124578	Cover, Wheel	84 532123246	Decal,Adjustment
32 532121748	Washer 25/32 x 1-5/8 x 16 Ga.	85 532124858	Pulley,Idler
33 532059192	Cap, Valve	86 532007190	Spring
34 532065139	Stem, Valve	87 819133808	Washer 13/32 x 2 - 3/8 x 8 Ga.
35 532000278	Fitting, Grease	88 874760636	Bolt-Hex 3/8-16 x 2 - 1/4
36 532121167	Spindle, R.H.	89 532100644	Bushing, Handle
38 532108137	Bellcrank Assembly	90 874930516	Bolt-Hex 5/16-18 x 1
39 874781044	Bolt, Hex 5/8 -11 x 2 - 3/4 Gr. 5	91 819111416	Washer 11/32 x 7/8 x 16 Ga.
41 532124836	Fitting, Grease	92 873680500	Nut-Lock 5/16 - 18
42 873221000	Nut, Hex 5/8 -11		



18 H.P. GARDEN TRACTOR

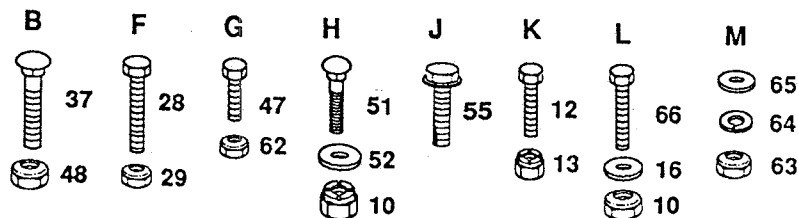
[illegible]

REPAIR PARTS

18 HP GARDEN TRACTOR

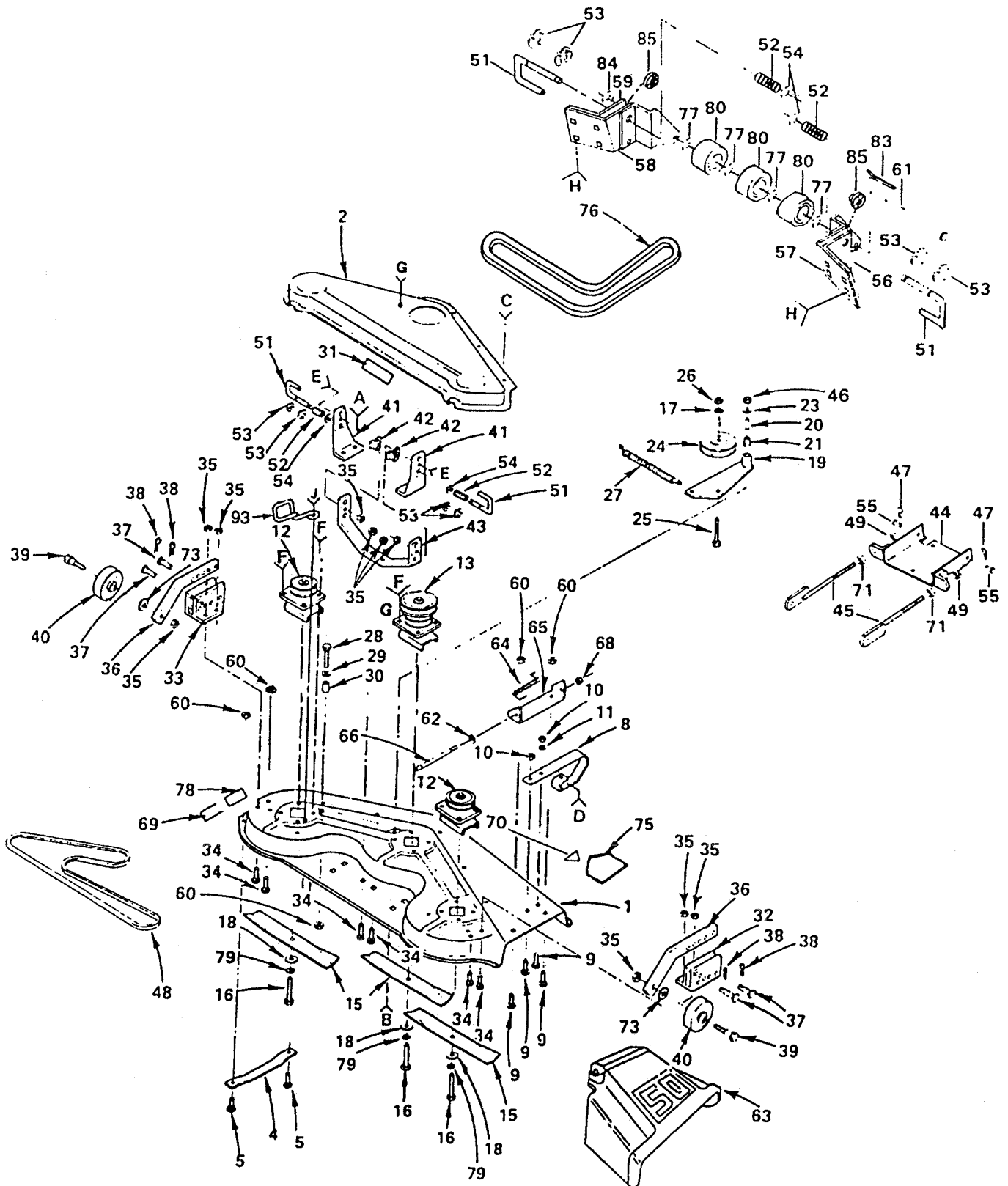
MOWER LIFT

KEY PART NO. NO.	DESCRIPTION	KEY PART NO. NO.	DESCRIPTION
1 532121891	Handle, Adjust, Lift	36 532123934	Scale, Height Indicator
2 873350600	Nut, Hex Jam, 3/8-16	37 874760616	Bolt, Hex 3/8-16 x 1
3 532110811	Rod, Adjust, Lift	38 532105624	Hub, Lift Shaft
4 876020308	Pin, Cotter 3/32 x 3/4	39 819112410	Washer 11/32 x 1 - 1/2 x 10 Ga.
5 532124874	Spring	40 819171616	Washer 17/32 x 1 x 16 Ga.
6 819131016	Washer 13/32 x 5/8 x 16 Ga.	41 532009135	Retainer, Spring
7 532121794	Cover, Access	42 532105429	Arm Suspension
8 532122085	Shield, Heat, Rear	43 532105413	Stud, Pivot Center
9 532110807	Nut, Special	44 810040800	Washer, Lock 1/2
10 873680500	Nut, Lock, 5/16-18	45 873220800	Nut, Hex, 1/2-13
11 532110903	Brace, Heat Shield	46 532105501	Brkt. Suspension, Mower
12 874780408	Bolt, Hex, 1/4-20 x 1/2	47 872140606	Bolt, Carriage 3/8-16 x 3/4
13 873680400	Nut, Lock 1/4-20	48 873680600	Nut, Lock, 3/8-16
14 532110436	Grommet	49 532109412	Cap, Spring
15 532106872	Support Asm. Dash	50 532126843	Guard, Belt, Engine
16 819111216	Washer, 11/32 x 3/4 x 16 Ga.	51 872140508	Bolt, Carriage, 5/16-18 x 1
17 874520628	Bolt, 3/8-16 x 1-3/4	52 819111610	Washer, 11/32 x 1 x 10 Ga.
18 532005948	Brkt. Lift LH	53 532121043	Panel, Side RH
19 532005947	Brkt. Lift RH	54 532121044	Panel, Side LH
20 819172410	Washer, 17/32 x 1-1/2 x 10 Ga.	55 817490608	Screw, Hex Wsh Thdrol. 3/8-16 x 1/2
21 532005949	Tube .384 x 1/2 x 1-1/4	56 873800600	Nut, Lock, 3/8-16
22 810040600	Lockwasher, 3/8	57 873220600	Nut, Hex 3/8-16
23 532124217	Shaft, Lift	58 810040500	Washer, Lock Hvy. Helical Spring
24 532110810	Trunnion, Stop Depth	59 874780516	Bolt, Hex Fin 5/16 - 18 x 1
25 819151216	Washer, 15/32 x 3/4 x 16 Ga.	60 532123935	Plug, Hole
26 812000037	Klip Ring	61 532109458	Strip, Foam
27 532007594	Brkt. Lift LH	62 873930600	Nut, Centerlock 3/8-16
28 532007901	Bolt, Shoulder	63 873220400	Nut, Hex 1/4-20
29 873900400	Nut, Hex Flange 1/4-20	64 810090400	Washer, Lock 1/4
30 532007596	Link Lift LH	65 819091216	Washer, 9/32 x 3/4 x 16 Ga.
31 532105503	Link Lift RH	66 874760512	Bolt, Hex 5/16-18 x 3/4
32 532124670	Retainer, Spring	67 812000022	E-Ring
33 810040600	Washer, Nylock	68 819292016	Washer 29/32 x 1 - 1/4 x 16 Ga.
34 532124763	Pointer, Height Indicator		
35 532120529	Washer, Nylon		



REPAIR PARTS

18 H.P. GARDEN TRACTOR

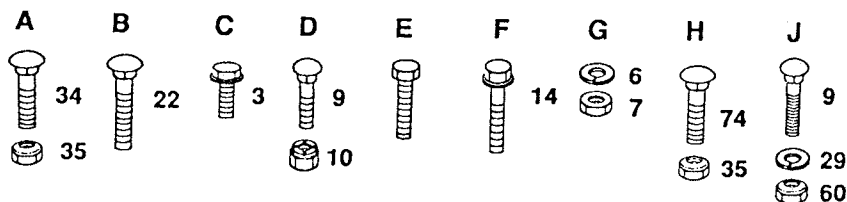


REPAIR PARTS

18 HP GARDEN TRACTOR

MOWER

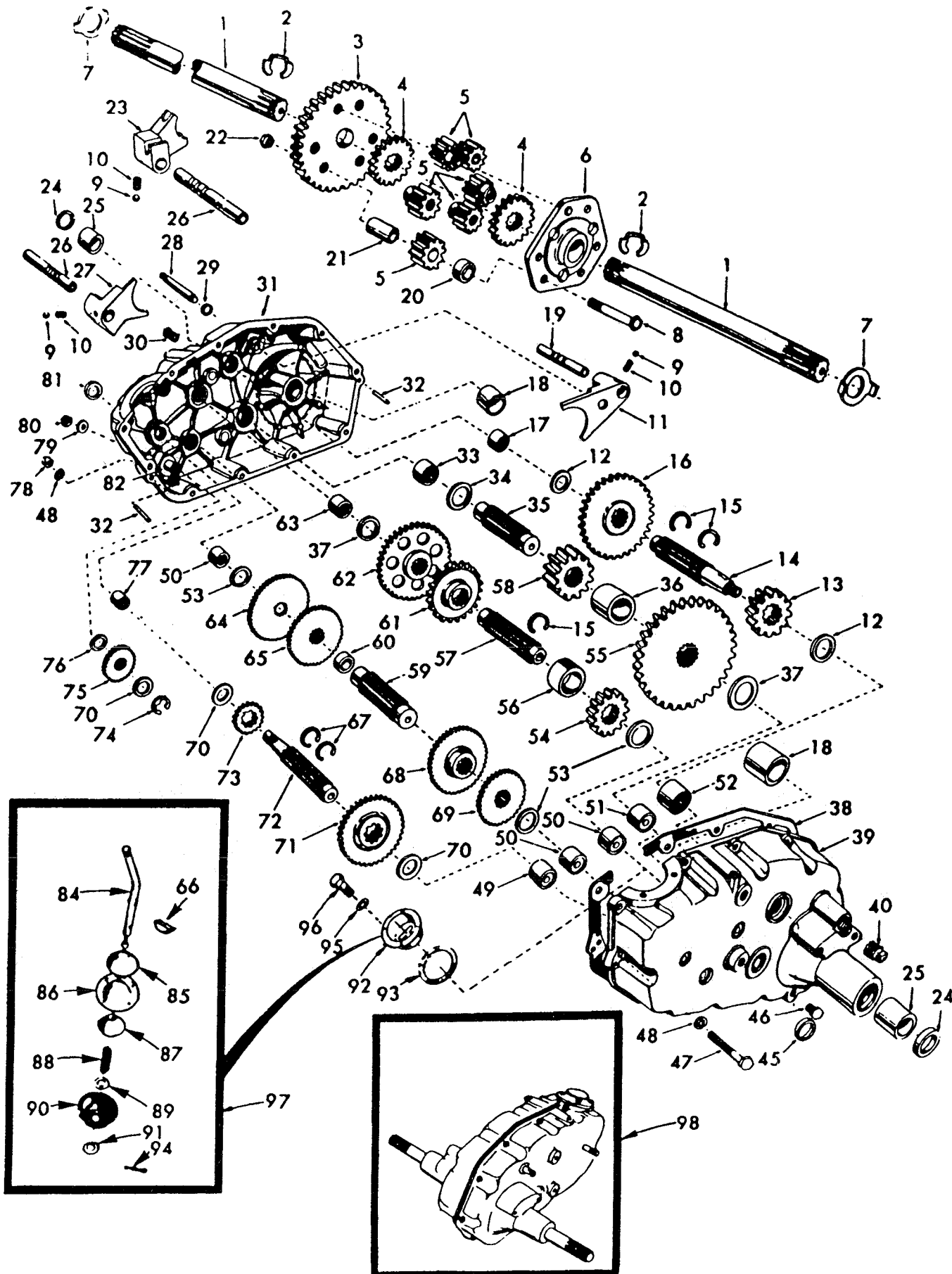
KEY PART NO. NO.	DESCRIPTION	KEY PART NO. NO.	DESCRIPTION
1 532121664	Housing, Mower	42 532110237	Spacer
2 532121811	Cover - Drive, Deck	43 532105434	Brace, Suspension
3 817490508	Screw - Hex Washer Thrd. Roll 5/ 16 18 x 1/2	44 532109778	Plate Assy, Mower Suspension
4 532125074	Runner, L.H.	45 532109771	Brkt., Suspension
5 872110505	Bolt, Carr. 5/16 - 18 x 5/8	46 873350500	Nut - Hex 5/16 - 18
6 810040500	Washer - Lock, 5/16	47 532124660	Clip, Hairpin
7 873220500	Nut - Hex 5/16- 18	48 532003703	V Belt
8 532120449	Runner, R.H.	49 873680800	Nut, Crownlock 1/2 - 13
9 872140506	Bolt, Carr. 5/16- 18 x 3/4	50 874760622	Bolt, Hex 3/8 - 16 x 1 3/8
10 532124949	Nut, Lock 5/16- 18	51 532105435	Pin, Release
11 819111116	Washer 11/32 x 11/16 x 16 Ga.	52 532003720	Spring
12 532121658	Mandrel - Secondary	53 812000039	Ring, Klip
13 532121657	Mandrel - Primary	54 819171612	Washer 17/32 x 1 x 12 Ga.
14 817490612	Screw - Hex Washer Thrd. Roll 3/8 16 x 3/4	55 532105440	Pin, Clevis
15 532121798	Blade	56 532105458	Brkt., Outer, R.H.
16 874610624	Bolt - Hex, 3/8 - 24 x 1 - 1/2 Gr. 5	57 532109773	Brkt., Inner, R.H.
17 810040600	Washer - Lock, 3/8	58 532110997	Brkt., Inner, L.H.
18 819132012	Washer 13/32 x 1 - 1/4 x 12 Ga.	59 532120000	Brkt., Outer, L.H.
19 532124685	Arm Assembly, Idler	60 873680500	Locknut 5/16 - 18
20 532124702	Liner - Bearing	61 532109776	Pin, Pivot
21 532007835	Bearing	62 819111016	Washer 11/32 x 5/8 x 16 Ga.
22 872110522	Bolt, Carriage 5/16- 18 x 2 - 3/4	63 532110509	Shield, Deflector
23 819111816	Washer 11/32 x 1-1/8 x 16 Ga.	64 532106734	Spring, Deflector
24 532102403	Pulley, Idler	65 532109743	Bracket, Deflector
25 874760624	Bolt - Hex 3/8 - 16 x 1 - 1/2	66 532106735	Rod, Hinge
26 873220600	Nut - Hex 3/8- 16	68 532110452	Bush Nut
27 532104361	Spring	69 532003713	Decal, Instruction, Caution (English)
28 874780520	Bolt - Hex 5/16-18 x 1 - 1/4 Gr. 5	70	Decal, Safety Standard (Not Serviced)
29 819111216	Washer 11/32 x 3/4 x 16 Ga	71 873220600	Nut - Hex 3/8 x 16
30 532008438	Spacer Split	73 819171512	Washer 17/32 x 15/16 x 12 Ga
31 532123247	Decal - V-Belt, Dr. Schematic, Mower	74 872240608	Bolt, Carriage 3/8 - 16 x 1
32 532105448	Bracket, Ga. Wheel, R.H.	75 532121349	Decal - Warning
33 532105449	Bracket, Ga. Wheel, L.H.	76 532110884	V-Belt
34 872240606	Bolt, Carriage 3/8 - 16 x 3/4	77 819151610	Washer 15/32 x 1 x 10 Ga.
35 873680600	Nut, Crownlock 3/80 16	78 532105185	Decal, Instruction, Caution (French)
36 532105453	Bar, Ga. Wheel	79 810030600	Washer - Lock 3/8
37 532005565	Pin, Clevis	80 532109729	Roller, Nose
38 532124670	Retainer, Spring	83 876020412	Pin, Cotter
39 532124842	Bolt, Shoulder	84 819151616	Washer 15/30 x 1 x 16 Ga.
40 532105455	Wheel, Gauge	85 532120135	Spacer
41 532105433	Brkt., Suspension	93 532121352	Keeper, Belt L.H.



REPAIR PARTS

18 H.P. GARDEN TRACTOR

TRANSAXLE



REPAIR PARTS

18 H.P. GARDEN TRACTOR

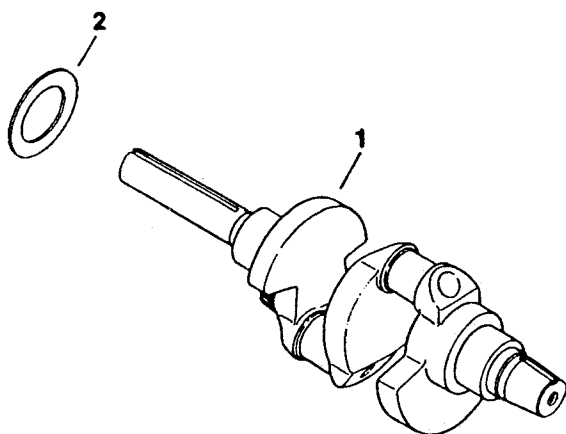
TRANSAXLE

KEY NO.	PART NO.	DESCRIPTION	KEY NO.	PART NO.	DESCRIPTION
1	532124662	Axle Shaft	50	532004222	Needle Bearing
2	812000034	Retaining Ring	51	532001529	Needle Bearing
3	532004199	Final Drive Gear	52	532008119	Needle Bearing
4	532004216	Differential Gear	53	532004220	Thrust Bearing Race
5	532004215	Differential Pinion	54	532004209	3rd Reduction Pinon-Low
6	532004217	Differential Carrier	55	532124668	4th Reduction Gear
7	532124674	Axle Thrust Washer	56	532004442	3rd Reduction Pinion Spacer
8	874020652	Hex Bolt 3/8-24 x 3-1/4 (1" Thread Length)	57	532004195	2nd Reduction Gear Shaft
9	532124697	Steel Ball	58	532004214	Final Drive Pinion
10	532124676	Spring Shift Fork Detent	59	532004194	1st Reduction Gear Shaft
11	532004985	Shift Fork, High-Low Range	60	532007528	1st Reduction Shaft Spacer
12	532124931	Thrust Bearing Race	61	532124666	3rd Reduction Pinion High
13	532124667	4th Reduction Pinion	62	532124665	2nd Reduction Gear
14	532124661	3rd Reduction Gear Shaft	63	532007398	Needle Bearing
15	532124677	Snap Ring-Crescent Type	64	532124664	Low Speed Gear and 2nd Reduction Pinion Cluster
16	532124679	High-Low Range Gears	65	532004204	Reverse Gear
17	532008118	Needle Bearing	66	532002898	Key-Hi-Pro) 1/8 x 17/32
18	532124705	Sintered Iron Bearing	67	532004926	Snap Ring Crescent Type
19	532122238	Shift Fork Shaft, High-Low Range	68	532004205	Intermediate Speed Gear
20	532004218	Differential Pinion Spacer	69	532125099	High Speed Gear
21	532124673	Differential Pinion Bushing	70	532001370	Thrust Bearing Race
22	532124701	Gripco Centerlock Nut 3/8-24	71	532124681	Intermediate and High Speed Cluster Pinions
23	532004986	Shift Fork-L.H.	72	532000208	Input Shaft
24	532124698	Oil Seal	73	532004201	Low Speed Pinion
25	532124709	Sintered Iron Bearing	74	812000002	E-Ring
26	532124672	Shift Fork Shaft	75	532001153	Reverse Idler Gear
27	532006262	Shift Fork-R.H.	76	532124862	Reverse Idler Thrust Washer
28	532122254	Shift Shaft, High-Low Range	77	532003990	Needle Bearing
29	532006269	Oil Seal	78	873220500	Hex Nut 5/16-18
30	532005855	Pressure Relief Valve	79	532001167	Sealing Washer
31	532122162	Gearcase, Reverse Idler Shaft and Bearings-R.H. (Inc. Key No s. 17,18, 25, 33, 50, 63, 76, 77 and 82)	80	873360700	Hex Jam Nut 7/16-20
32	532006277	Dowel Pin	81	532124675	Oil Seal
33	532004225	Needle Bearing	82	532124696	Reverse Idler Shaft
34	532007396	Thrust Bearing Race	84	532005384	Gear Shift Lever Bent
35	532004198	4th Reduction Gear Shaft	85	532002978	Gear Shift Cap
36	532124663	4th Reduction Gear Spacer	86	532124682	Gear Shift Ball Cover and Pin
37	532007395	Thrust Bearing Race	87	532124704	Shift Lever Guide Ball Keyed
38	532121878	Gearcase Gasket	88	532004924	Spring
39	532122163	Gearcase and Bearings L.H. (Inc. Key No s. 18, 25, 49, 50 (2),51 and 52)	89	819151516	Washer 15/32 x 15/16 x 16 Ga
40	813320400	Pipe Plug 1/2-14 N.P.T.	90	532110542	Shift Mechanism Seal
45	532006271	Oil Seal	91	819181511	Washer 9/16 x 15/16 x 12 Ga
46	813060200	Pipe Plug 1/4-18 N.P.T.	92	532000075	Gear Shift Gate and Reinforcement
47	874780524	Hex Bolt 5/16-18 x 1-1/2 Grade 5	93	532006274	Shift Ball Cover Gasket
48	810140500	Lockwasher 5/16 Extra Heavy	94	876020412	Cotter Pin 1/8 x 3/4
49	532124792	Needle Bearing	95	810040500	Lockwasher 5/16
			96	874760514	Hex Bolt 5/16 x 18 UNC x 7/8
			97	532124863	Gear Shift Lever Assy.
			98	532122420	Transaxle Assembly Less Brake Drum Shift Lever

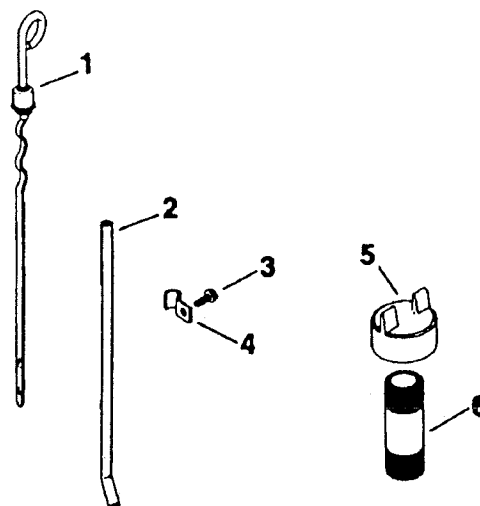
REPAIR PARTS

18 H.P. GARDEN TRACTOR ENGINE MODEL NUMBER M18S24639

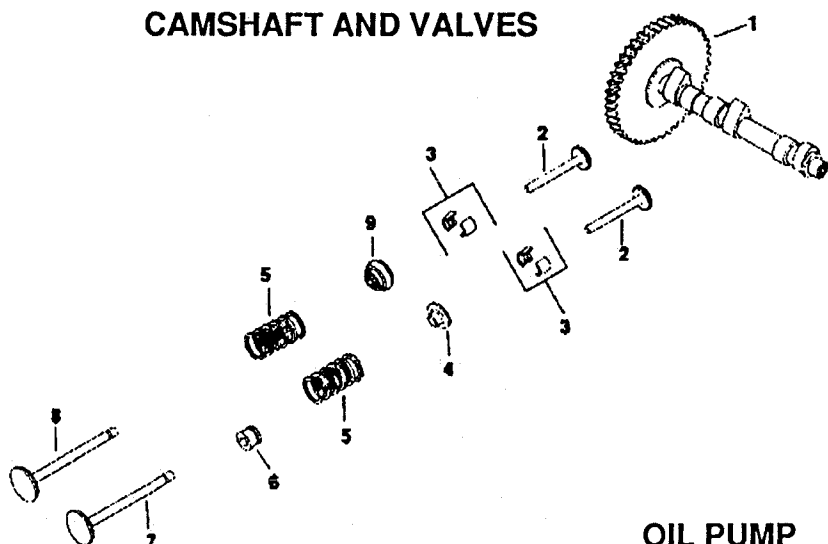
CRANKSHAFT



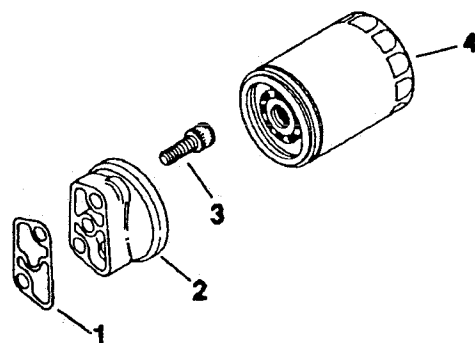
DIPSTICK



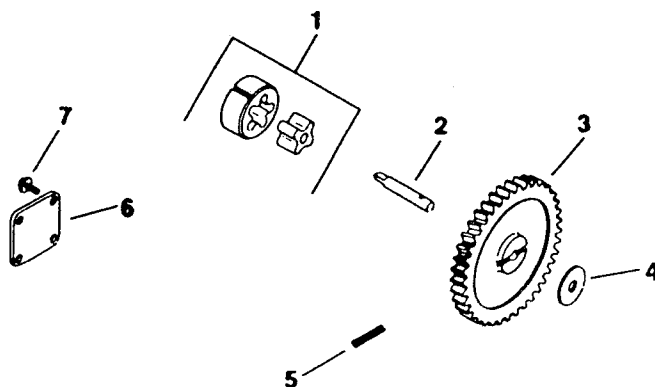
CAMSHAFT AND VALVES



OIL FILTER



OIL PUMP



REPAIR PARTS

18 HP GARDEN TRACTOR ENGINE MODEL NUMBER M18S24639

CRANKSHAFT

KEY PART NO. NO.	DESCRIPTION
1 52 014 64	Crankshaft
2 52 468 03	"Washer, thrust .119/.122 (A.R.)"
52 468 04	"Washer, thrust .128/.131"
52 468 05	"Washer, thrust .137/.140 (A.R.)"

OIL FILTER

KEY PART NO. NO.	DESCRIPTION
1 52 041 16	"Gasket, oil filter"
2 52 181 03	"Adapter, oil filter"
3 X-55-15	"Screw, hex. socket hd5/16-18 x 1-1/4 (2)"
4 52 050 02	Oil filter

CAMSHAFT & VALVES

KEY PART NO. NO.	DESCRIPTION
1 52 012 09	Camshaft
2 52 019 03	Tappet (4)
3 41 755 10	"Kit, retainer (4)"
4 230011	"Retainer, intake valve (2)"
5 25 089 01	"Spring, valve (4)"
6 52 032 13	"Seal, intake valve stem (2)"
7 52 017 08	"Valve, intake (2)"
8 52 016 05	"Valve, exhaust (2)"
9 52 413 01	"Rotator, exhaust valve (2)"

DIPSTICK

KEY PART NO. NO.	DESCRIPTION
1 52 038 04	Dipstick 11-5/16 blade
2 52 123 09	"Tube, oil level"
3 X-67 - 64	Screw 10- 32 x 3/8
4 52 154 01	"Clip, tube"
5 52.173 01	"Cap, pipe"
6 46.136 02	"Pipe, oil fill 3/4" I.P. x 2-1/2"

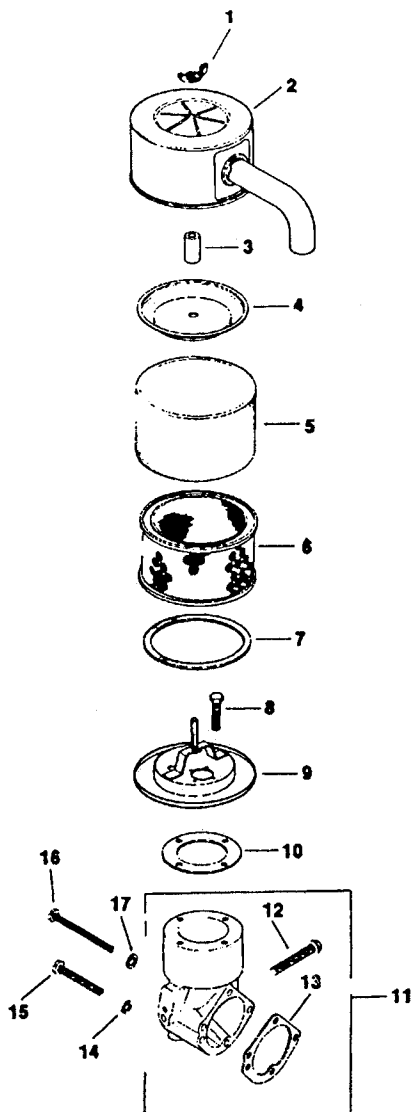
OIL PUMP

KEY PART NO. NO.	DESCRIPTION
1 52 393 09	Rotor set
2 52 144 05	"Shaft, oil pump"
3 52 043 05	"Gear, oil pump"
4 52 422 01	"Spacer, shim (A.R. max. 2)"
5 X-280-25	"Pin, roll"
6 52 096 03	"Cover, oil pump"
7 X-67-64	"Screw, hex. wash. hd. 10-32 x 7/16 (4)"

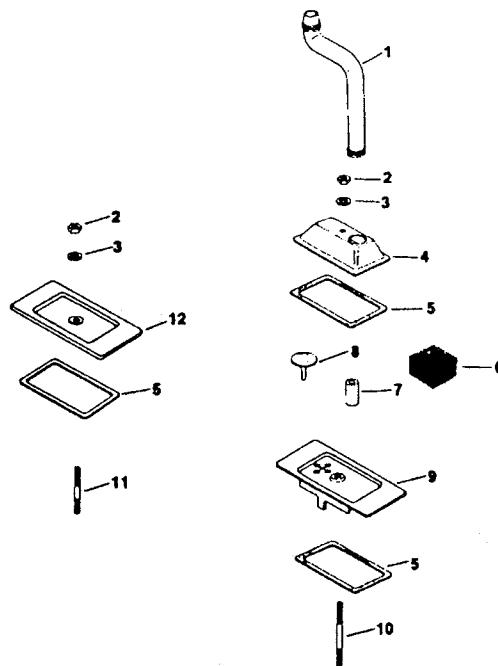
REPAIR PARTS

18 HP GARDEN TRACTOR ENGINE MODEL NUMBER M18S24639

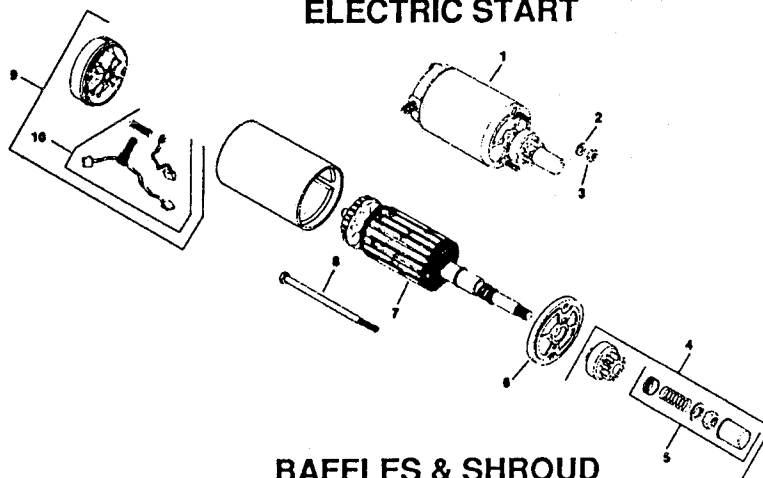
AIR INTAKE



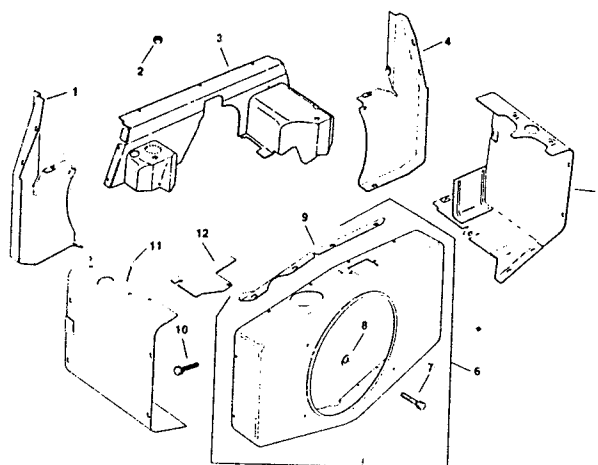
BREATHER & VENT



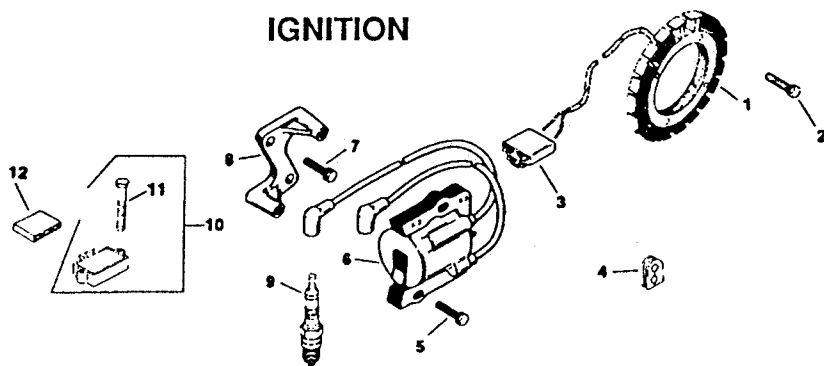
ELECTRIC START



BAFFLES & SHROUD



IGNITION



REPAIR PARTS

18 H.P. GARDEN TRACTOR ENGINE MODEL NUMBER M18S24639

AIR INTAKE

KEY PART NO. NO.	DESCRIPTION
1 X-276-7	Wing nut 1/4-20
2 52 096 36	"Cover, air cleaner"
3 231032	Seal
4 52 082 04	"Cover, air cleaner element"
5 45 083 01	Precleaner
6 45 083 02	"Element, air cleaner"
7 237423	"Seal, air cleaner cover"
8 X-67-98	"Screw, hex. wash. hd. 10-32 x 9/16 (4)"
9 52 201 06	"Base, air cleaner"
10 277093	"Gasket, air cleaner base"
11 52 754 01	"Kit, elbow (Includes 12 & 13)"
12 52 086 11	"Screw, H.C. 1/4-20 x 5/8"
13 25 041 06	"Gasket, elbow"
14 X-22-9	"Washer, lock #10 (2)"
15 X-50-57	"Screw, R.H.M. 10-32 x 1-1/2 (2)"
16 X-50-37	"Screw, R.H.M. 10-32 x 2-1/4"
17 X-25-79	"Washer, plain #10"
NOT ILLUSTRATED	
— 25 113 07	Decal, air cleaner"

IGNITION

KEY PART NO. NO.	DESCRIPTION
1 237878	"Kit, stator"
2 X-67-51	"Screw, H.C. 10-24 x 3/4 (4)"
3 236473	Connector
4 52 313 02	Grommet
5 25 086 15	"Screw, hex. wash. hd. 1/4-20 x 1 (2)"
6 52 584 02	"Module, ignition"
7 25 086 16	"Screw, hex. wash. hd. 1/4-20 x 7/8 (2)"
8 52 126 08	"Bracket, module"
9 51 132 02	Spark plug (2)
10 25 755 03	"Kit, rectifier-regulator (Includes 11)"
11 X-132-5	"Screw, H.C. 1/4-20 x 5/8 (2)"
12 236602	Connector
NOT ILLUSTRATED	
— 25 518 21	"Lead, red, rectifier-reg. (5" - 14 gauge - uninsulated push on tab terminals)"
— 52 518 22	"Lead, black, module to connector (12-1/2" - 18 gauge - insulated push on tab - uninsulated push on tab terminals)"

BREATHER & VENT

KEY PART NO. NO.	DESCRIPTION
1 52 326 05	"Hose, breather"
2 X-81-1	"Nut, hex. 1/4-20 (2)"
3 X-25-12	"Washer, plain 1/4 (2)"
4 52 096 08	"Cover, #1 upper cyl. valve"
5 52 055 01	"Gasket, cover (3)"
6 231419	"Filter, breather"
7 52 032 04	"Seal, breather"
8 52 462 01	"Valve, breather"
9 52 096 22	"Cover, #1 lower cyl. valve"
10 275220	"Stud, #1 cyl. valve cover 1/4-20 x 3-1/4"
11 X-352-39	"Stud, #2 cyl. valve cover 1/4-20 x 2-1/4"
12 52 096 18	"Cover, #2 cylinder valve"

ELECTRIC START

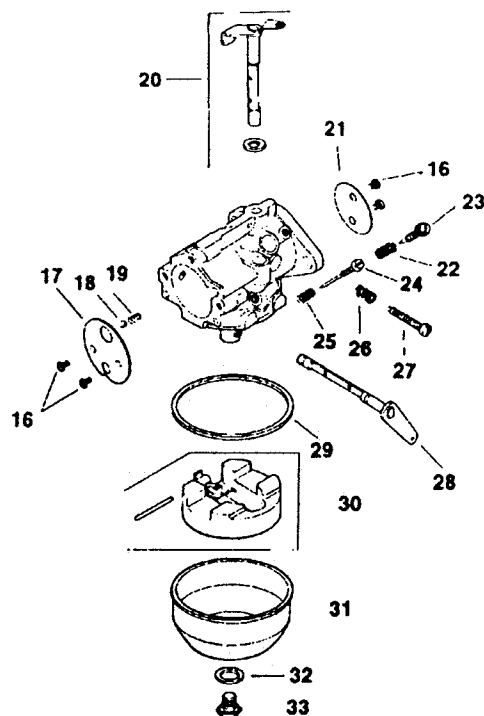
KEY PART NO. NO.	DESCRIPTION
1 52.098 03	Starter assembly (Includes 4-10)
2 X- 20 - 1	"Washer, lock 1/4 (2)"
3 X- 81 - 1	"Nut, hex . 1/4 - 20 (2)"
4 52 755 05	"Kit, drive (Includes 5)"
5 52 755 08	"Kit, drive parts"
6 52 227 01	"Cap, drive end"
7 52 170 02	Armature
8 52 211 01	"Bolt, thru 1/4-20 x 5-7/8 (2)"
9 277612	"Cap, commutator end (Includes 10)"
10 48 755 15	"Kit, brush"
— 25 450 03	"Tag, caution"

BAFFELS & SHROUD

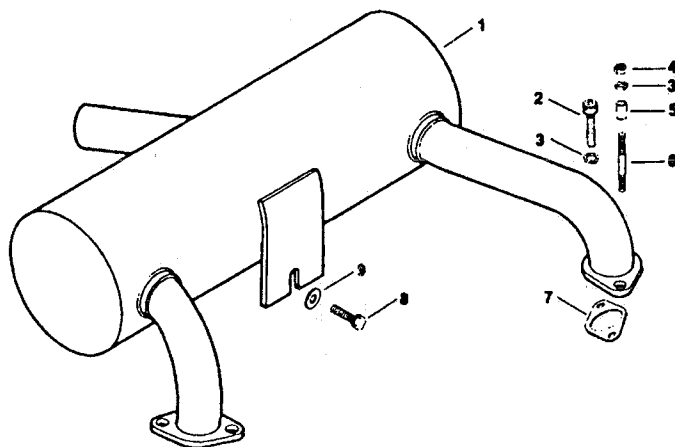
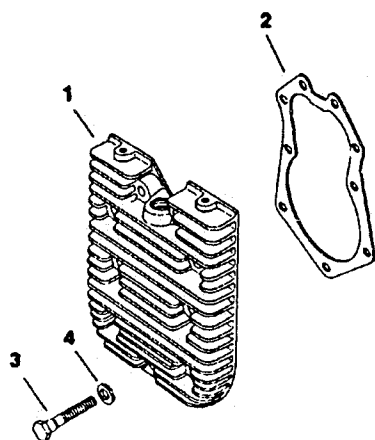
KEY PART NO. NO.	DESCRIPTION
1 52 281 09	Duct, #2 side air
2 X-82-2	Nut, 5/16 - 18
3 52 282 01	Duct, #1 side air
4 52 281 21	Duct, #1 side air
5 52 063 33	Baffle, #1 cylinder head
6 52 755 71	Kit, blower housing (Includes 7-9)
7 52 086 11	Screw, self tap 1/4 - 20 x 5/8 (2)
8 52 468 16	Washer, flat 1/4 (2)
9 52 217 01	Support, upper housing
10 X-67-83	Screw, hex. wash. hd. 1/4 - 20 x 7/16
11 52 063 21	Baffle, #2 cylinder head
12 52 063 01	Baffle, #2 cylinder top

**18 H.P. GARDEN TRACTOR
ENGINE MODEL NUMBER M18S24639**

This diagram shows an exploded view of a mechanical assembly. The components are numbered 1 through 15. The main assembly is shown in two parts: a top section and a bottom section. The top section includes a long horizontal shaft (15) with a handle (13) and a bracket (14). The bottom section includes a main housing (12) with a flange (10) and a cover (11). Various fasteners, including screws (1, 2, 3, 4, 5, 6, 7, 8) and a pin (9), are shown in their respective positions relative to the main components.



CYLINDER HEAD



REPAIR PARTS

18 H.P. GARDEN TRACTOR ENGINE MODEL NUMBER M18S24639

CARBURETOR

KEY PART NO. NO.	DESCRIPTION
1 X-6-8	"Screw, H.C. 5/16-18 x 2-3/4 (4)"
2 X-21-1	"Washer, lock 5/16 (4)"
3 52 041 09	"Gasket, intake (2)"
4 X-77-2	Nut 5/16 (2)
5 X-352-37	Stud 5/16-18 x 1 (2)
6 52 164 10	"Manifold, intake"
7 52 445 02	"Strap, lifting (2)"
8 25 155 02	"Connector, hose"
9 52 853 23	"Kit, carburetor w/gasket (Includes 10-33)"
10 277069	"Gasket, air cleaner"
11 271030	"Gasket, carburetor"
12 52 053 66	Carburetor (For information only not available separately)
13 82 755 07	"Kit, governor linkage (Includes 14)"
14 25 158 09	"Bushing, gov. linkage (2)"
15 52 186 06	"Arm, governor"
16 25 086 27	"Screw, throttle & choke plate (4)"
17 25 146 03	"Plate, choke"
18 25 194 01	"Ball, choke friction"
19 25 089 03	"Spring, choke friction"
20 52 144 18	"Shaft, throttle w/lever & seal"
21 25 146 02	"Plate, throttle"
22 25 089 02	"Spring, idle fuel"
23 25 368 01	"Needle, idle fuel adj."
24 25 368 03	"Needle, main fuel"
25 25 089 02	"Spring, main fuel"
26 25 089 04	"Spring, idle speed"
27 25 086 26	"Screw, idle speed adj."
28 52 090 12	"Lever, choke"
29 25 041 04	"Gasket, bowl"
30 25 757 09	"Kit, float"
31 25 104 01	"Bowl, fuel"
32 25 041 03	"Gasket, bowl retainer screw"
33 25 100 05	"Screw, bowl retainer"
— 25 757 11	"Kit, carburetor repair"

CYLINDER HEAD

KEY PART NO. NO.	DESCRIPTION
1 52 015 08	Head, cylinder (2)"
2 52 041 20	Gasket, head (2)"
3 41 086 02	Screw, hex. hd. 5/16-18 x 1-1/2 (18)"
4 220534	Washer, plain 5/16 (18)"

EXHAUST

KEY PART NO. NO.	DESCRIPTION
1 52 068 08	Muffler
2 X-55-6	"Screw, hex. socket hd. 5/16-18 x 3/4 (2)"
3 X-21 - 1	"Washer, lock 5/16 (4)"
4 X-82-2	"Nut, hex. 5/16-18 (2)"
5 52 112 08	"Spacer 2-1/4"" (2)"
6 52 072 13	Stud 5/16-18 x 4 (2)
7 52 041 14	"Gasket, exhaust manifold (2)"
8 X-132-5	"Screw, H.C. sems 1/4-20 x 5/8"
9 X-25-73	"Washer, plain 1/4"

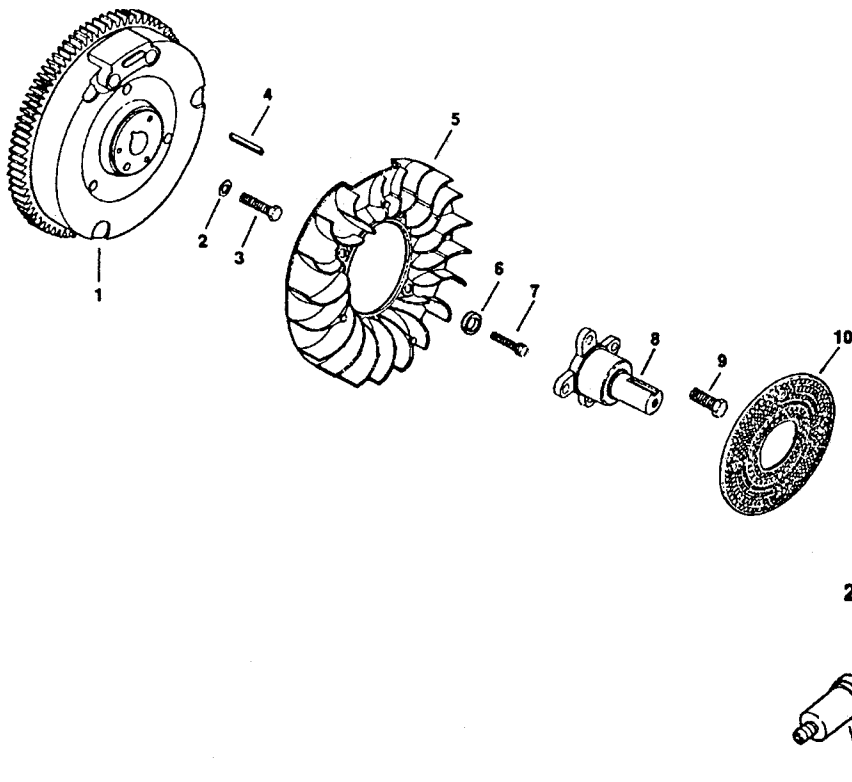
LOW OIL PRESSURE CUTOUT

KEY PART NO. NO.	DESCRIPTION
1 52 099 06	Oil pressure switch
— 82 522 11	Short Block
— 52 755 94	Gasket Set

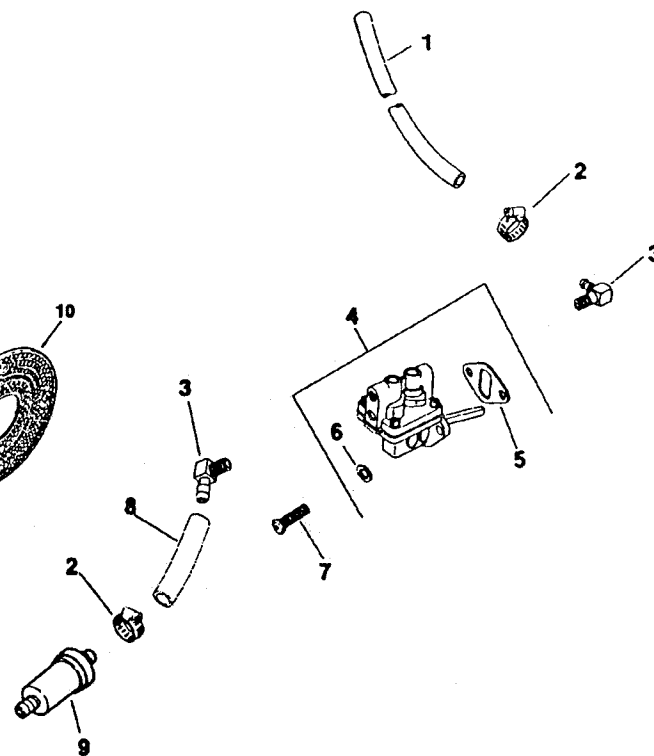
REPAIR PARTS

18 HP GARDEN TRACTOR ENGINE MODEL NUMBER M18S24639

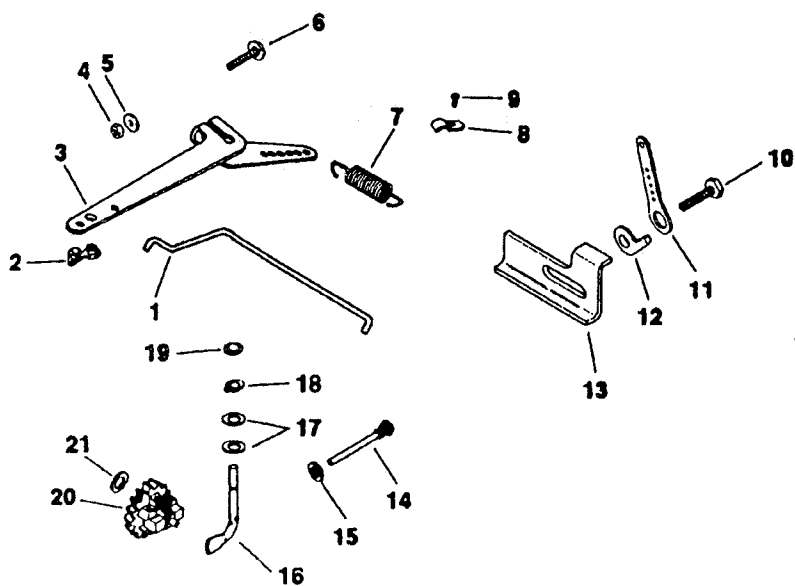
FLYWHEEL



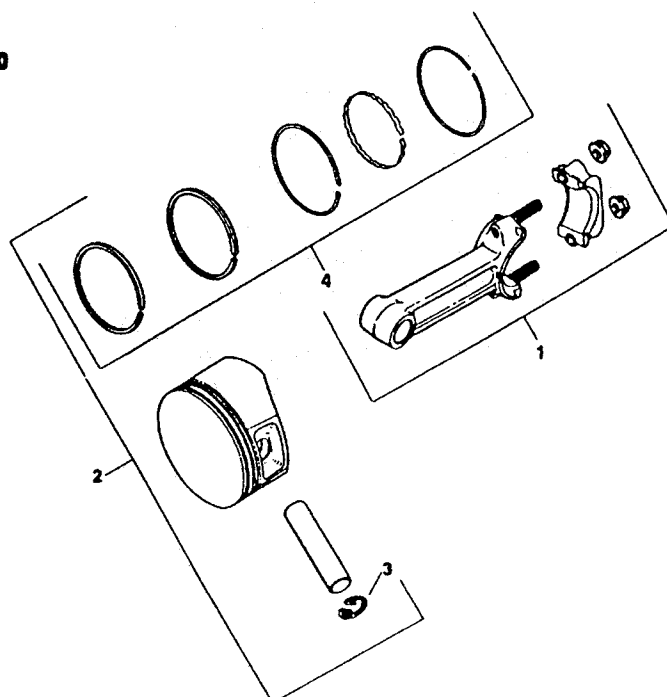
FUEL PUMP



GOVERNOR



PISTON & ROD



REPAIR PARTS

18 HP GARDEN TRACTOR ENGINE MODEL NUMBER M18S24639

FLYWHEEL

KEY PART NO. NO.	DESCRIPTION
1 52 025 36	Flywheel
2 52 468 15	"Washer, plain"
3 25 086 24	"Screw, hex. machine 3/8-24 x 1-1/4"
4 X-286-17	"Key, square 3/16 x 7/8"
5 25 157 01	Fan
6 25 112 04	Spacer (4)
7 25 086 21	"Screw, hex. wash. hd. 1/4-20 x 5/8 (4)"
8 237373	"Shaft, front drive"
9 X-159-2	"Screw, H.C. 3/8-16 x 1 (4)"
10 25 162 02	"Screen, grass"

GOVERNOR

KEY PART NO. NO.	DESCRIPTION
1 82 755 07	"Kit, governor linkage (Includes 2)"
2 25 158 09	"Bushing, gov. linkage (2)"
3 52 186 06	"Arm, governor"
4 X-81-1	"Nut, hex. 1/4-20"
5 X-25-72	"Washer, plain 1/4"
6 52 211 04	"Screw, R.H. sq. neck 1/4-20 x 1"
7 52 091 04	"Spring, governor"
8 235778	"Clamp, cable (2)"
9 X-67-97	"Screw, hex. wash. hd. 10-24 x 3/8 (2)"
10 X-67-62	"Screw, hex. wash. hd. 1/4-20 x 3/4"
11 52 119 01	"Lever, speed control"
12 234614	"Stop, governor"
13 52 531 02	"Stop, high speed"
14 231355	"Pin, governor stop"
15 X-25-12	"Washer, plain 1/4"
16 52 078 04	"Shaft, governor cross"
17 X-25-102	"Washer, plain (2)"
18 X-269-28	"Retainer, governor"
19 X-25-63	"Washer, plain 1/4"
20 A-235743-S	"Kit, governor gear"
21 237022	Washer

FUEL PUMP

KEY PART NO. NO.	DESCRIPTION
1 52 353 04	"Line, fuel 1/4 x 6 - 3/4" lg."
2 X-426-9	"Clamp, hose (4)"
3 25 155 02	"Connector, hose (2)"
4 52 559 01	"Pump, fuel assembly (Includes 5 & 6)"
5 25 041 05	"Gasket, fuel pump"
6 X-25-63	"Washer, plain 1/4 (2)"
7 47 086 08	"Screw, pozidriv T.H. 1/4-20 x 5/8 (2)"
8 25 353 03	"Line, fuel 1/4 x 13-1/2" lg."
9 25 050 01	"Filter, fuel"

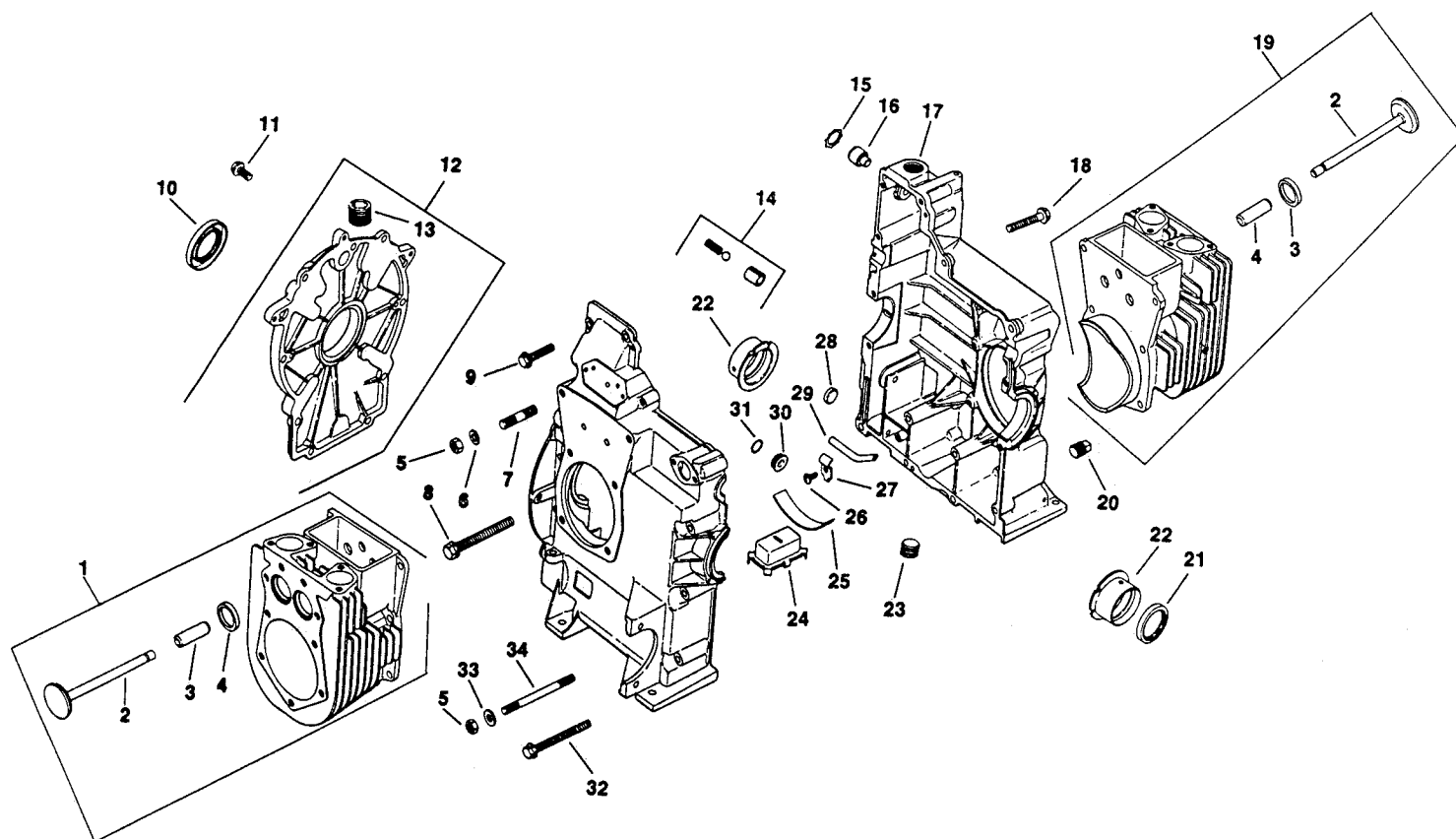
PISTON & ROD

KEY PART NO. NO.	DESCRIPTION
1 52 067 67	Connecting Rod (Std.) (2)
— 52 067 68	Connecting Rod (.010) (2)
2 52 874 11	Piston w/Ring Set (Std.) (2)
— 52 874 12	Piston w/Ring Set (.003) (2)
— 52 874 13	Piston w/Ring Set (.010) (2)
— 52 874 14	Piston w/Ring Set (.020) (2)
— 52 874 15	Piston w/Ring Set (.030) (2)
3 230004	"Retainer, piston pin (4)"
4 52 108 09	Ring Set (Std. & .003) (2)
— 52 108 10	Ring Set (.010) (2)
— 52 108 11	Ring Set (.020) (2)
— 52 108 12	Ring Set (.030) (2)

REPAIR PARTS

18 H.P. GARDEN TRACTOR ENGINE MODEL NUMBER M18S24639

CRANKCASE



KEY PART NO. NO.

DESCRIPTION

KEY PART NO. NO.

DESCRIPTION

1	82 755 17	"Kit, #2 cylinder barrel (Includes 2-4)"
2	52 016 05	"Valve, exhaust"
3	52 316 06	"Guide, valve (2)"
4	52 031 01	"Insert, valve seat (2)"
5	X-82-2	"Nut, hex. 5/16-18 (16)"
6	52 468 12	"Washer, flat 5/16 (12)"
7	52 072 12	"Step stud 5/16-18 x 3/4", 3/8-16 x 5/8", 2" long (12)"
8	25 086 13	"Screw, hex. flange 3/8-16 x 3-5/8 (2)"
9	25 086 10	"Screw, hex. flange 5/16-18 x 1-1/2 (3)"
10	X-583-5	"Seal, rear oil"
11	X-802-9	"Screw, hex. wash. hd. (9)"
12	52 755 55	"Kit, closure plate (Includes 13)"
13	X-75-23	"Plug, 1/8 N.P.T.F."
14	52 755 50	"Kit, oil relief"
15	X-269-43	"Ring, retaining"
16	52 078 05	"Shaft, governor"
17	Crankcase (Service with Short Block 82 522 11)	
18	25 086 12	"Screw, hex. flange 5/16-18 x 2 (2)"

19	82 755 16	"Kit, #1 cylinder barrel (Includes 2-4)"
20	X-75-10	"Plug, sq. hd. 3/8 N.P.T.F."
21	52 032 10	"Seal, front oil"
22	52 030 10	"Bearing, sleeve (Std.) (2)"
—	52 030 11	"Bearing, sleeve (.010)"
—	52 030 12	"Bearing, sleeve (.020)"
23	X-75-32	"Plug, hex. ctsk. 3/8 N.P.T.F. (2)"
24	52 095 03	"Housing, oil"
25	52 237 02	"Clamp, spring"
26	X-67-64	"Screw, hex. wash. hd 10-32 x 7/16"
27	52 237 05	"Clamp, tube"
28	X-702-15	"Plug, cup"
29	52 123 10	Tube
30	52 139 08	Plug
31	52 141 02	O-Ring
32	25 086 11	"Screw, hex. flange 5/16-18 x 3-1/2 (6)"
33	41 468 01	"Washer, plain (4)"
34	X-352-33	Stud 5/16-18 x 4-1/8 (2)