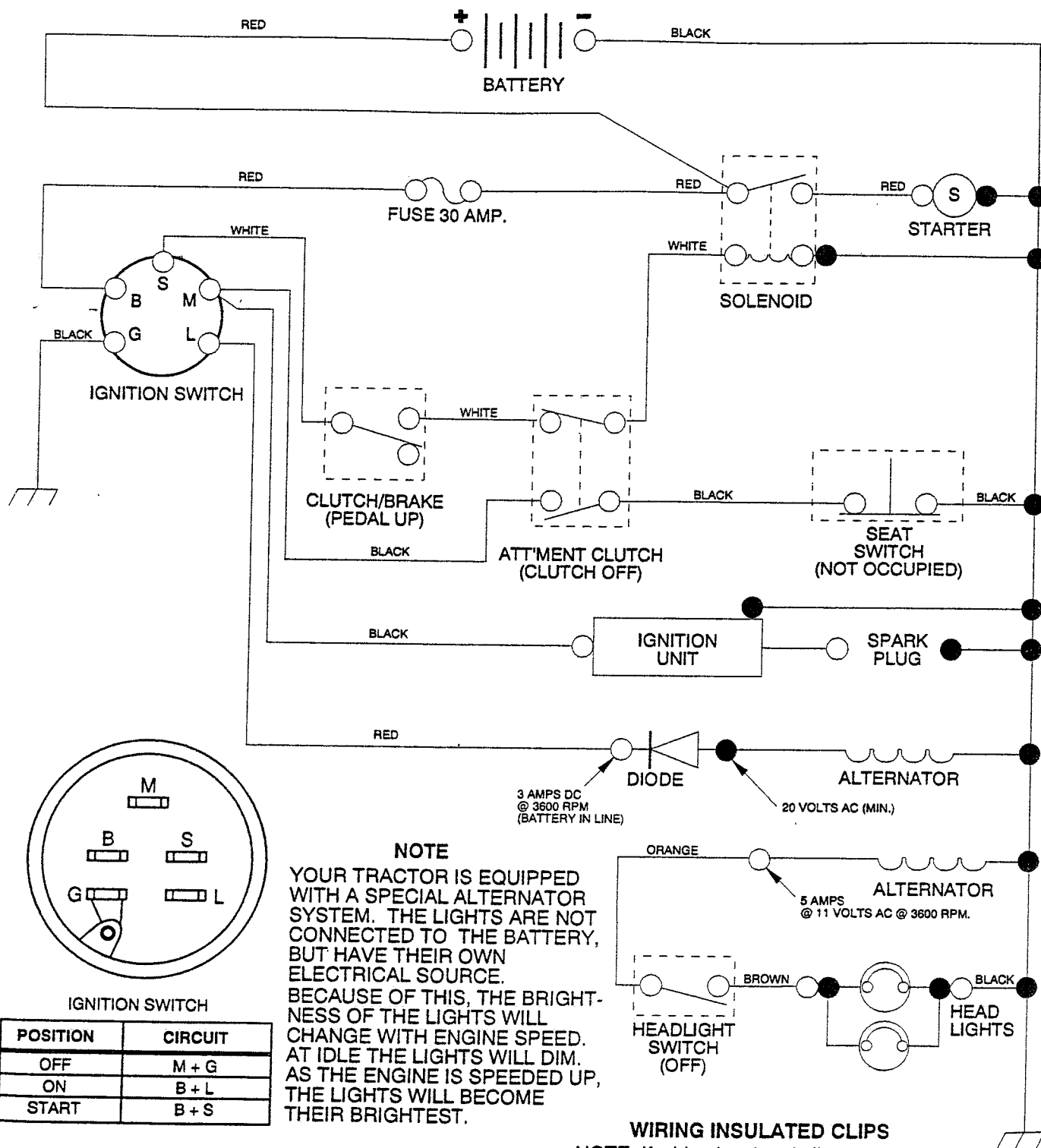


REPAIR PARTS

12 HP 38" LAWN TRACTOR - - MODEL NUMBER NN12R38A

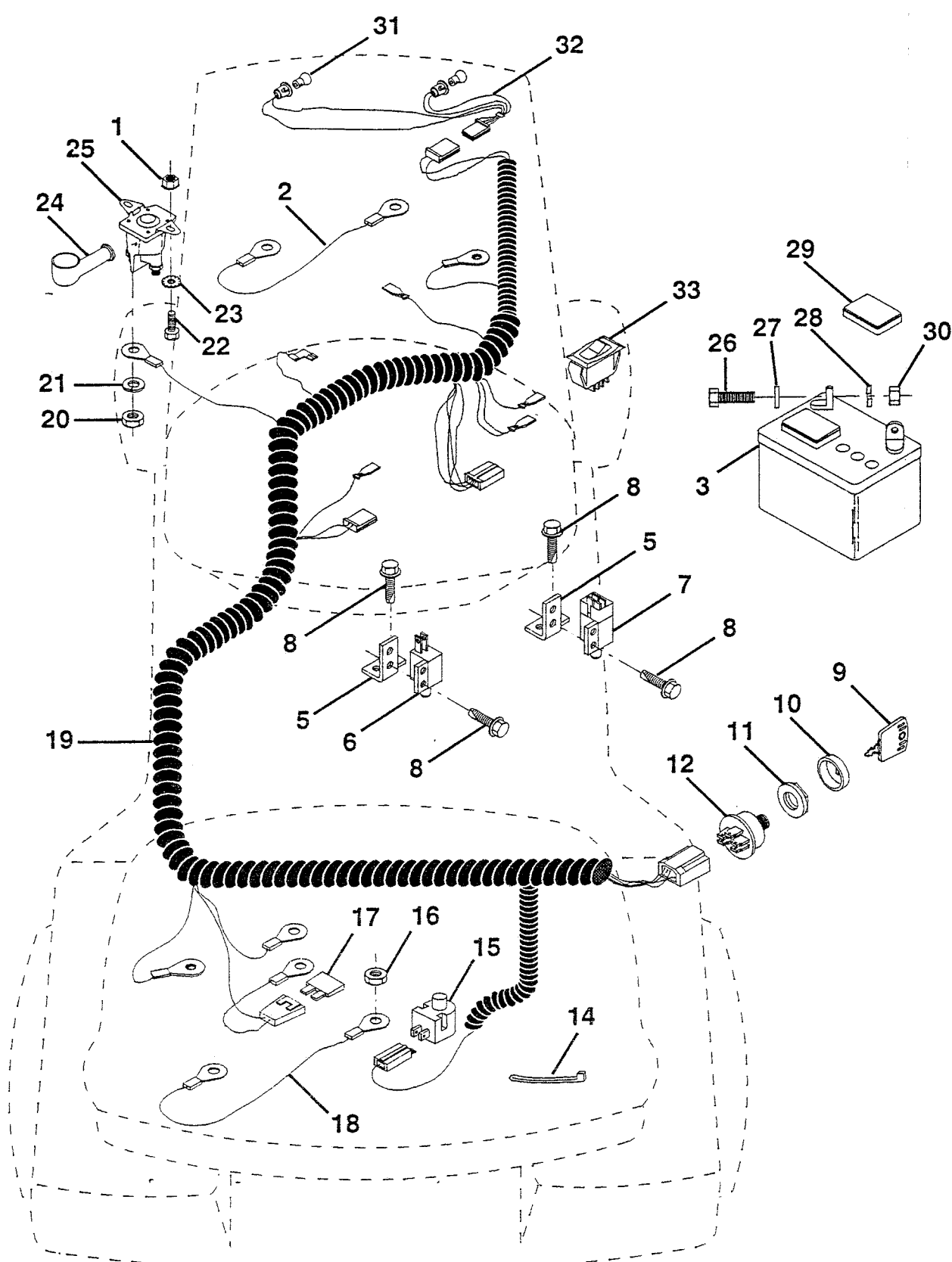
SCHEMATIC



REPAIR PARTS

12 HP 38" LAWN TRACTOR - - MODEL NUMBER NN12R38A

ELECTRICAL



REPAIR PARTS

12 HP 38" LAWN TRACTOR - - MODEL NUMBER NN12R38A

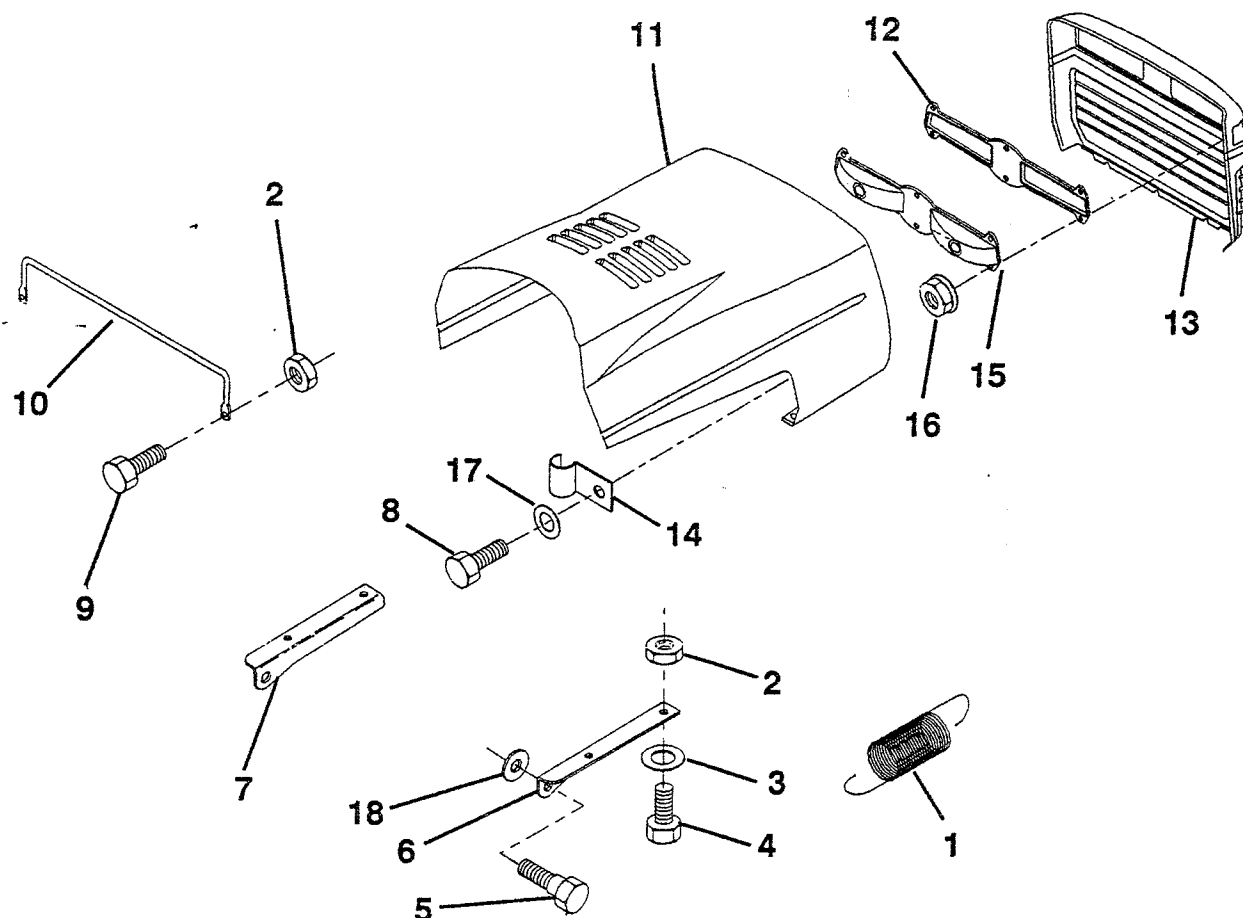
ELECTRICAL

KEY NO.	PART NO.	DESCRIPTION	KEY NO.	PART NO.	DESCRIPTION
1	73510400	Nut, Hex, Keps 1/4-20 UNC	18	128353	Assembly, Cable
2	108423X	Assembly, Cable	19	132222	Harness, Ignition
3	133909	Battery	20	73350400	Nut, Hex, Jam 1/4-20
5	108236X	Bracket, Switch	21	10090400	Washer, Lock 1/4
6	104445X	Switch, Interlock	22	74780408	Bolt, Hex 1/4-20 x 12 Grade 5
7	109553X	Switch, Interlock	23	11050400	Washer, Lock, External Tooth 1/4
8	17021008	Screw, Hex Head, Tapping #10-24 x 1/2	24	131563	Cover, Terminal
9	122147X	Key, Molded	25	109081X	Solenoid
10	123620X	Cover, Key, Ignition	26	74760412	Bolt, Hex Head 1/4-20 UNC x 3/4
11	124211X	Nut, Ignition	27	19091016	Washer 9/32 x 5/8 x 16 Gauge
12	4406R	Switch, Ignition	28	10040400	Washer, Lock, Hvy. Hel. Spring 1/4
14	7192J	Tie, Cable	29	121264X	Cap, Battery
15	121305X	Switch, Plunger	30	73220400	Nut, Hex, Fin 1/4-20
16	73510500	Nut, Keps 5/16-18	31	7662J	Bulb
17	108824X	Fuse	32	127441X	Harness, Light Socket
			33	110712X	Switch, Light

NOTE: All component dimensions given in U.S. inches
1 inch = 25.4 mm

HARDWARE SHOWN LARGER FOR EASIER IDENTIFICATION

CAPOT



O. EF.	NO. DE PIECE	DESCRIPTION	NO. DE REF.	NO. DE PIECE	DESCRIPTION
1	124657X	Ressort de traction	10	123693X	Support d'appui du capot
2	73510400	Ecrou à taquets H 1/4-20 UNC	11	132918X505	Capot
3	19091016	Rondelle 9/32 x 5/8 x 16 Ga.	12	127178	Lentille
4	74780410	Boulon H 1/4-20 UNC x 5/8 Cat. 5	13	134232X428	Calandre
5	126675X	Boulon à épaulement	14	2751R	Collier de conduite d'essence
6	122549X	Support du capot, C.D.	15	127177X	Porte-phares
7	122548X	Support du capot, C.G.	16	124346X	Ecrou auto-filetage à tête rondelle 1/4
8	17411310	Vis H #13-16 Hi-Lo x 5/8	17	19091216	Rondelle 9/32 x 3/4 x 16 Ga.
9	74780412	Boulon H 1/4-20 x 3/4 Cat. 5	18	19111116	Rondelle 11/32 x 11/16 x 16 Ga.

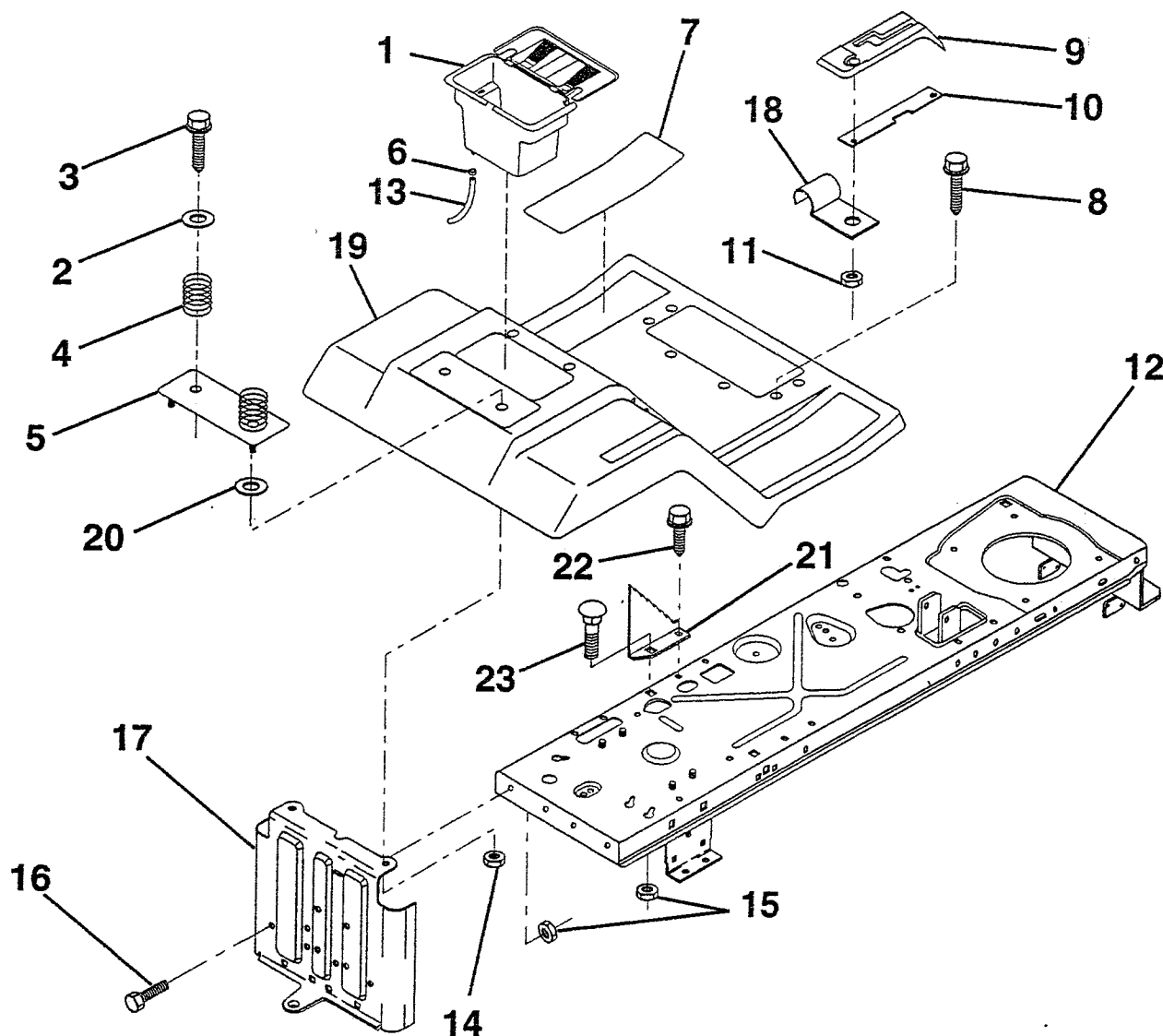
REMARQUE: Toutes les dimensions de composants sont données en pouces E.-U. -- 1 pouce = 25,4 mm

LA VISSERIE MONTREE EST PLUS GRANDE POUR FACILITER L'IDENTIFICATION.

REPAIR PARTS

12 HP 38" LAWN TRACTOR - - MODEL NUMBER NN12R38A

FENDER / CHASSIS



KEY PART NO. NO.

DESCRIPTION

1	129965	Case, Battery
2	19132012	Washer 13/32 x 1-1/4 x 12 Gauge
3	17490612	Screw, Hex Washer Head, Thd. Roll. 3/8-16 x 3/4
4	124181X	Spring, Compression, Seat
5	127115X505	Plate, Fender
6	109596X	Clamp, Hose
7	124144X	Pad, Footrest
8	17490512	Screw, Hex Washer Head, Thd. Roll. 5/16-18 x 3/4
9	126995X	Console, Shift Control
10	124602X	Bar, Shift Lock
11	124346X	Nut, Self-Threading 3/16
12	133384	Assembly, Frame

KEY PART NO. NO.

DESCRIPTION

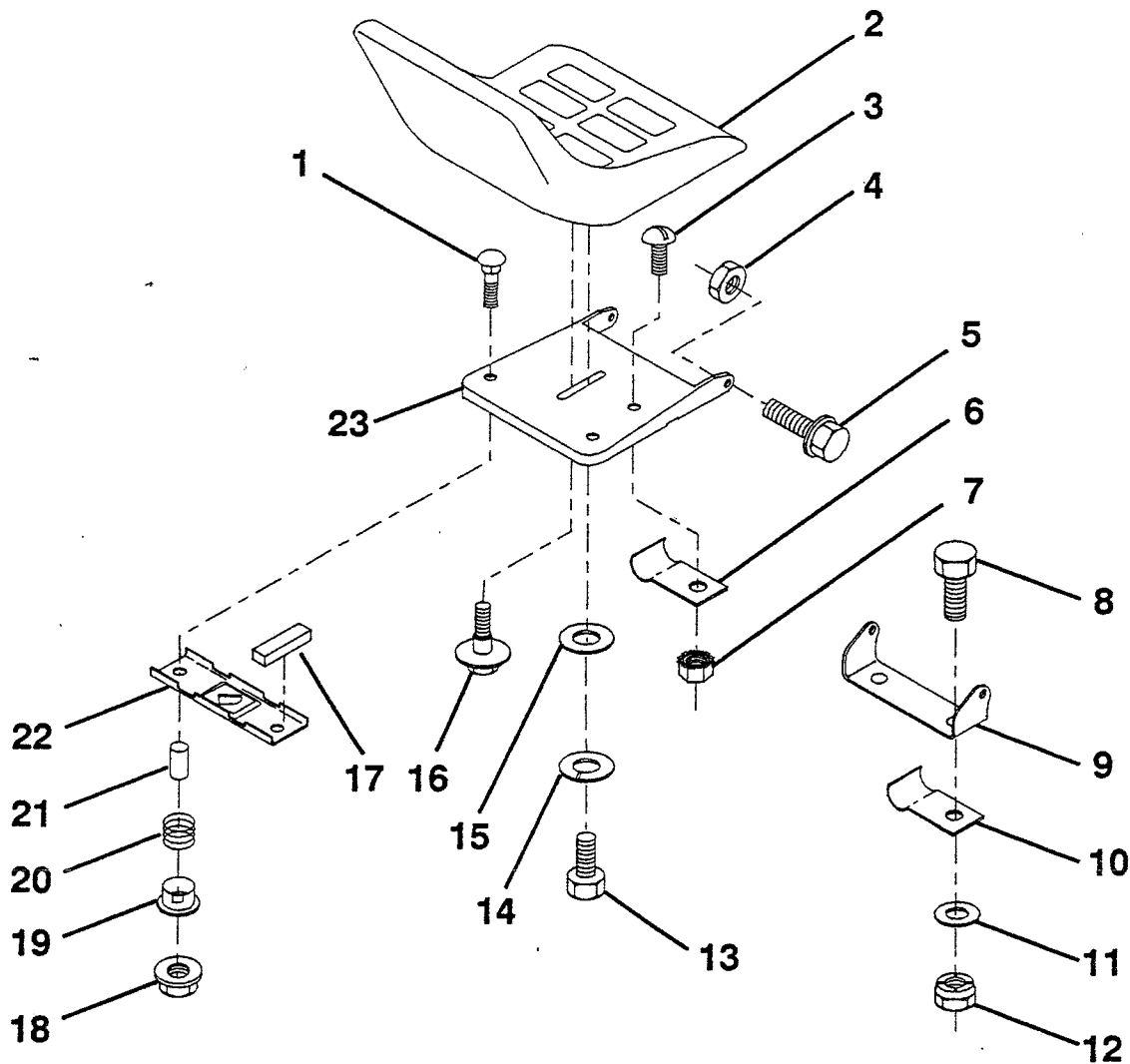
13	105687X	Tube, Battery Drain
14	73510400	Nut, Hex, Keps 1/4-20
15	73680500	Nut, Crownlock 5/16-18
16	74760512	Bolt, Hex 5/16-18 UNC x 3/4
17	127880	Drawbar
18	126470X	Clip, Insulated
19	132650X505	Fender/Footrest
20	19091413	Washer 9/32 x 7/8 x 13 Gauge
21	132562	Plate, Depth Stop
22	17490508	Screw, Thd. Roll. 5/16-18 x 1/2
23	72110506	Bolt, Carriage 5/16-18 x 3/4

NOTE: All component dimensions given in U.S. inches
1 inch = 25.4 mm

HARDWARE SHOWN LARGER FOR EASIER IDENTIFICATION

REPAIR PARTS
12 HP 38" LAWN TRACTOR - - MODEL NUMBER NN12R38A

SEAT



KEY PART NO.	NO.	DESCRIPTION
1	72050411	Bolt, Carriage 1/4-20 x 1-3/8
2	127423X	Seat
3	74641008	Screw, Slotted Pan Head #10-32 x 1/2
4	73680500	Nut, Crownlock 5/16-18
5	105529X	Bolt, Shoulder 5/16-18 UNC
6	4171R	Clip, Insulated
7	73951000	Nut, Keys #10-32 UNF
8	74760612	Bolt, Hex, Fin 3/8-16 UNC x 3/4
9	126656X	Bracket, Pivot, Seat
10	126471X	Clip, Insulated
11	19133210	Washer 13/32 x 2/4 x 10 Gauge
12	73680600	Nut, Crownlock 3/8-16 UNC

KEY PART NO.	NO.	DESCRIPTION
13	74780814	Bolt, Hex, Fin 1/2-13 x 7/8
14	10040800	Washer Lock Hvy. Hicl. Spr. 1/2
15	19171912	Washer 17/32 x 1-3/16 x 12 Gauge
16	127018X	Bolt, Shoulder
17	121251X	Strip, Foam
18	123976X	Locknut, Hex, Large, Flange
19	121248X	Bushing, Snap
20	121250X	Spring, Compression
21	121249X	Spacer, Split, Large .28 Id. x .88
22	121246X	Bracket, Switch, Mounting
23	131451	Pan, Seat

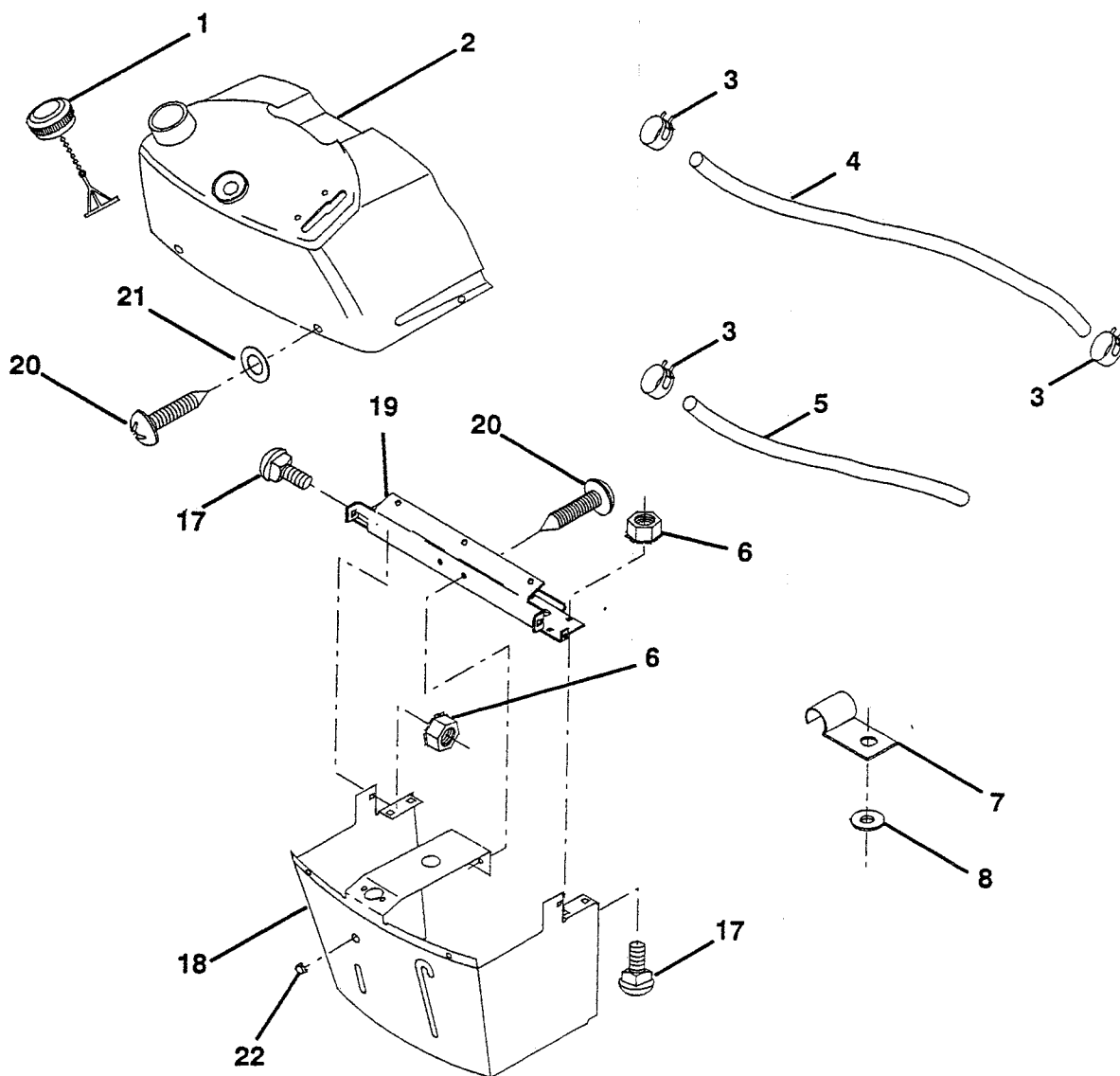
NOTE: All component dimensions given in U.S. inches
1 inch = 25.4 mm

HARDWARE SHOWN LARGER FOR EASIER IDENTIFICATION

REPAIR PARTS

12 HP 38" LAWN TRACTOR - - MODEL NUMBER NN12R38A

DASHBOARD



KEY PART NO. NO.

DESCRIPTION

1	122015X	Cap, Fuel
2	130914	Assembly, Dash & Fuel Tank
3	123487X	Clamp, Hose
4	8544R	Line, Fuel
5	8548R	Line, Fuel
6	73510400	Nut, Hex, Keps 1/4-20
7	2751R	Clip, Fuel Line
8	19091216	Washer 9/32 x 3/4 x 16 Gauge

KEY PART NO. NO.

DESCRIPTION

17	72110404	Bolt, Carriage 1/4-20 x 1/2 Grade 5
18	131886	Support Assembly, Dash
19	134744	Brace, Cross
20	18000408	Screw, Self-Tapping 1/4-20 x 1/2
21	19090816	Washer 9/32 x 1/2 x 16 Gauge
22	134014	Plug, Dome

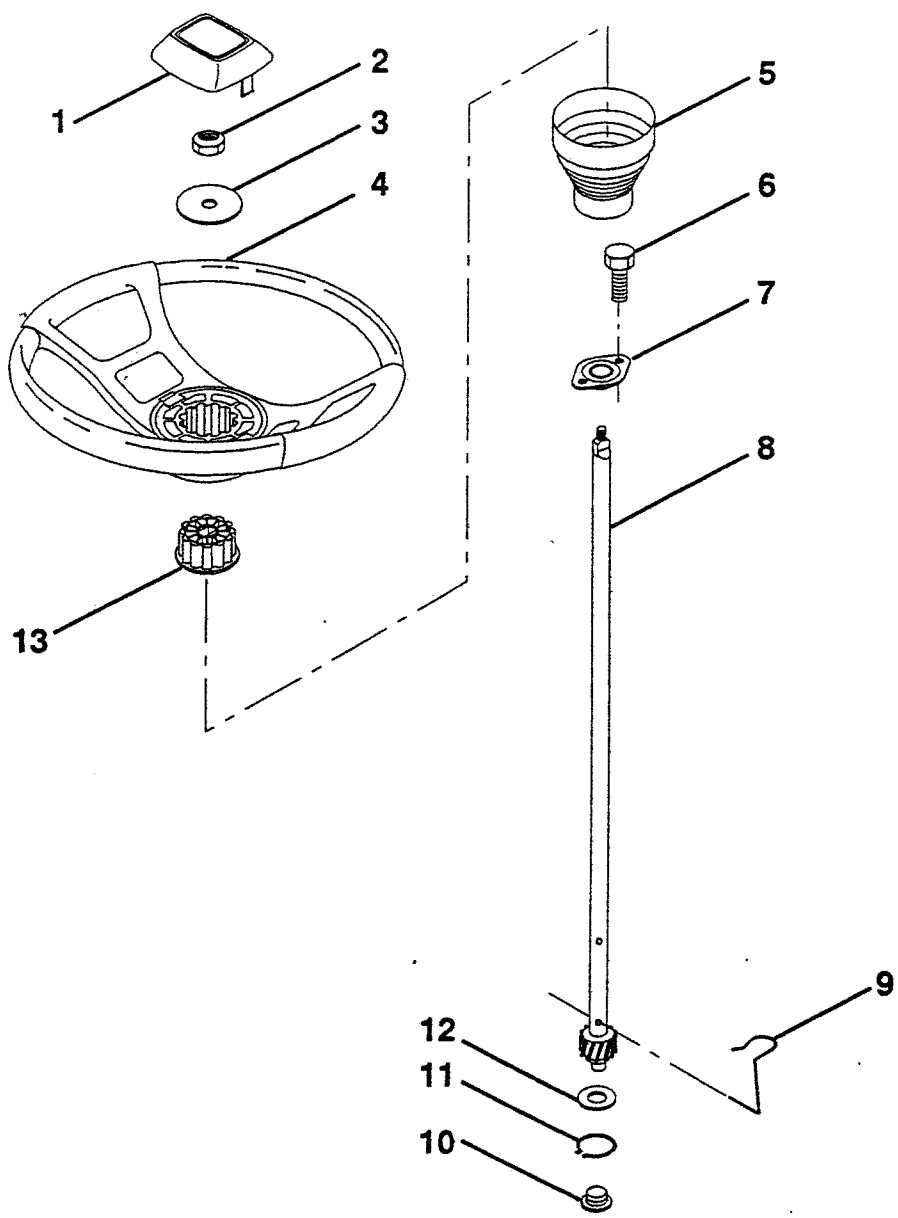
NOTE: All component dimensions given in U.S. inches
1 inch = 25.4 mm

HARDWARE SHOWN LARGER FOR EASIER IDENTIFICATION

REPAIR PARTS

12 HP 38" LAWN TRACTOR - - MODEL NUMBER NN12R38A

STEERING WHEEL



KEY PART NO.	NO.	DESCRIPTION
1	133742	Insert, Steering Wheel
2	7810H	Locknut 3/8-24 UNF
3	19133808	Washer 13/32 x 2-3/8 x 8 Gauge
4	133741	Wheel, Steering
5	121897X	Sleeve, Steering
6	17431008	Screw, Hex Self-Tapping #10-16 x 1/2
7	102803X	Bushing, Steering

KEY PART NO.	NO.	DESCRIPTION
8	123651X	Shaft, Steering
9	124210X	Clip, Steering
10	123438X	Bushing, Lower, Steering
11	12000045	Ring, Retaining
12	19211616	Washer 21/32 x 1 x 16 Gauge
13	104820X	Adaptor, Steering Wheel

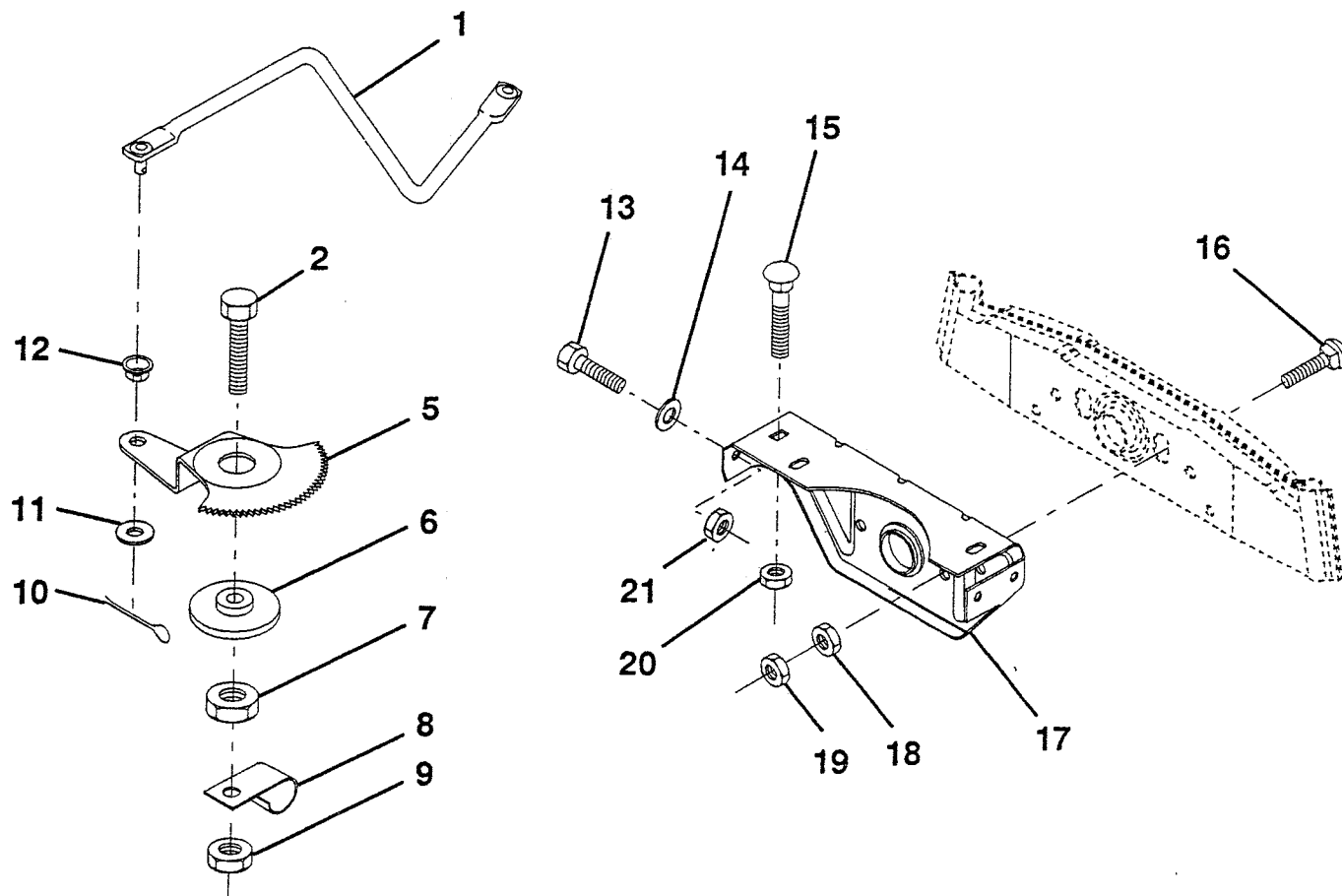
NOTE: All component dimensions given in U.S. inches
1 inch = 25.4 mm

HARDWARE SHOWN LARGER FOR EASIER IDENTIFICATION

REPAIR PARTS

12 HP 38" LAWN TRACTOR - - MODEL NUMBER NN12R38A

SECTOR GEAR / AXLE SUPPORT



KEY PART NO. NO.

DESCRIPTION

1	132566	Link, Drag
2	74780828	Bolt, Hex, Fin. 1/2-13 x 1-3/4
5	121926X	Gear, Sector
6	121927X	Bushing
7	73030800	Nut, Heavy, Hex, Top Lock 1/2-13 UNC
8	126472X	Clip, Wire
9	73680800	Nut, Crownlock 1/2-13
10	76020412	Pin, Cotter 1/8 x 3/4
11	19131316	Washer 13/32 x 13/16 x 16 Gauge
12	126847X	Bushing

KEY PART NO. NO.

DESCRIPTION

13	74760512	Bolt, Hex 5/16-18 UNC x 3/4
14	19111416	Washer 11/32 x 7/8 x 16 Gauge
15	72110606	Bolt, Carriage 3/8-16 UNC x 3/4
16	72140622	Bolt, Carriage 3/8-16 x 2-3/4
17	121912X	Support, Front Axle
18	73220600	Nut, Hex, Fin. 3/8-16 UNC
19	73930600	Nut, Centerlock 3/8-16 UNC
20	73680600	Nut, Crownlock 3/8-16 UNC
21	73680500	Nut, Crownlock 5/16-18

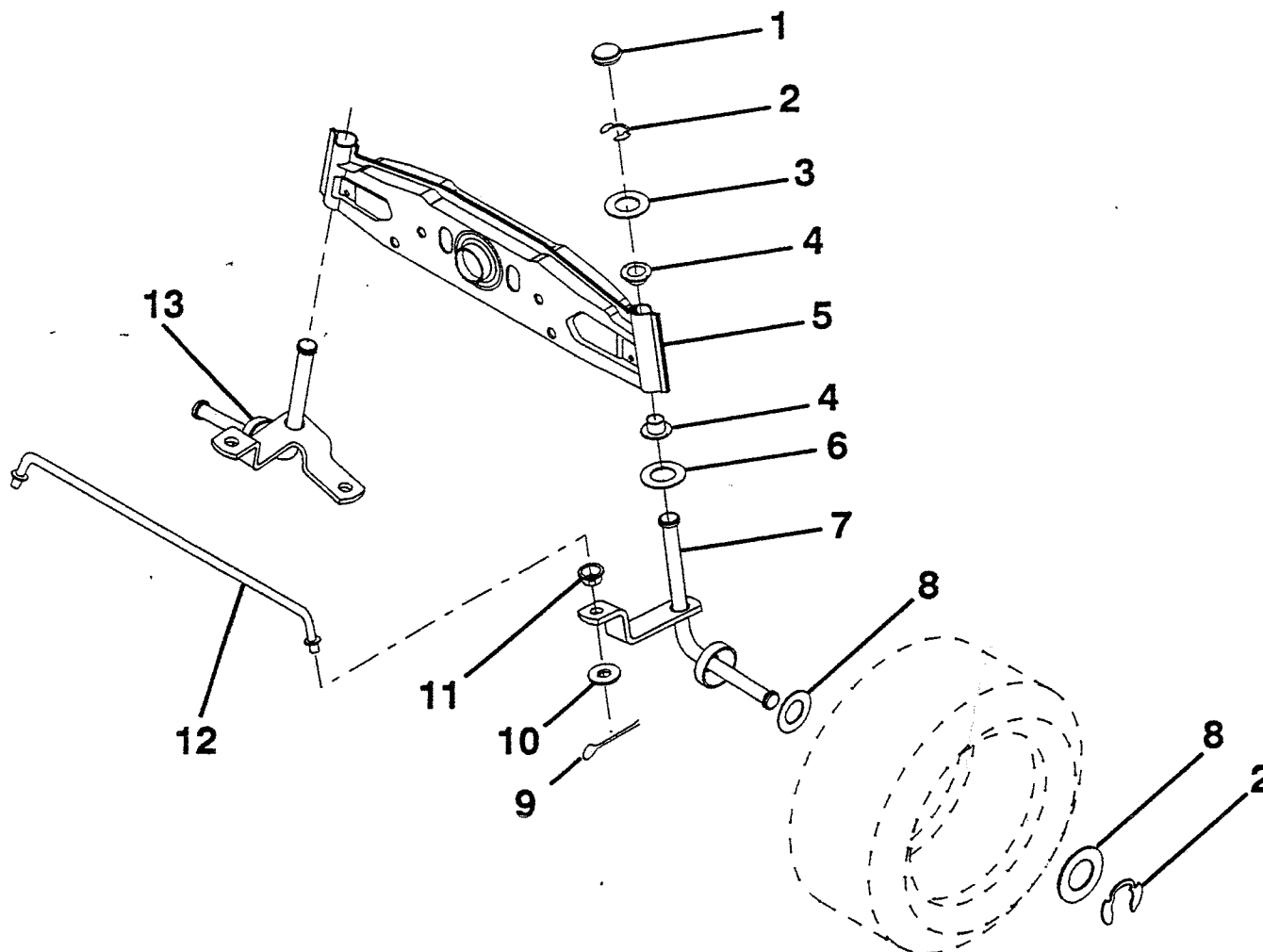
NOTE: All component dimensions given in U.S. inches
1 inch = 25.4 mm

HARDWARE SHOWN LARGER FOR EASIER IDENTIFICATION

REPAIR PARTS

12 HP 38" LAWN TRACTOR - - MODEL NUMBER NN12R38A

FRONT AXLE



KEY PART NO. NO.

DESCRIPTION

1	121232X	Cap, Spindle
2	12000029	Ring, Klip
3	121748X	Washer 25/32 x 1-5/8 x 16 Gauge
4	121922X	Nyliner
5	121914X	Axle, Front
6	6266H	Bearing, Thrust
7	121919X	Spindle Assembly, RH
8	121749X	Washer 25/32 x 1-1/4 x 16 Gauge

KEY PART NO. NO.

DESCRIPTION

9	76020412	Pin, Cotter 1/8 x 3/4
10	19131316	Washer 13/32 x 13/16 x 16 Gauge
11	126847X	Bushing
12	121924X	Rod, Tie
13	121916X	Spindle Assembly, LH

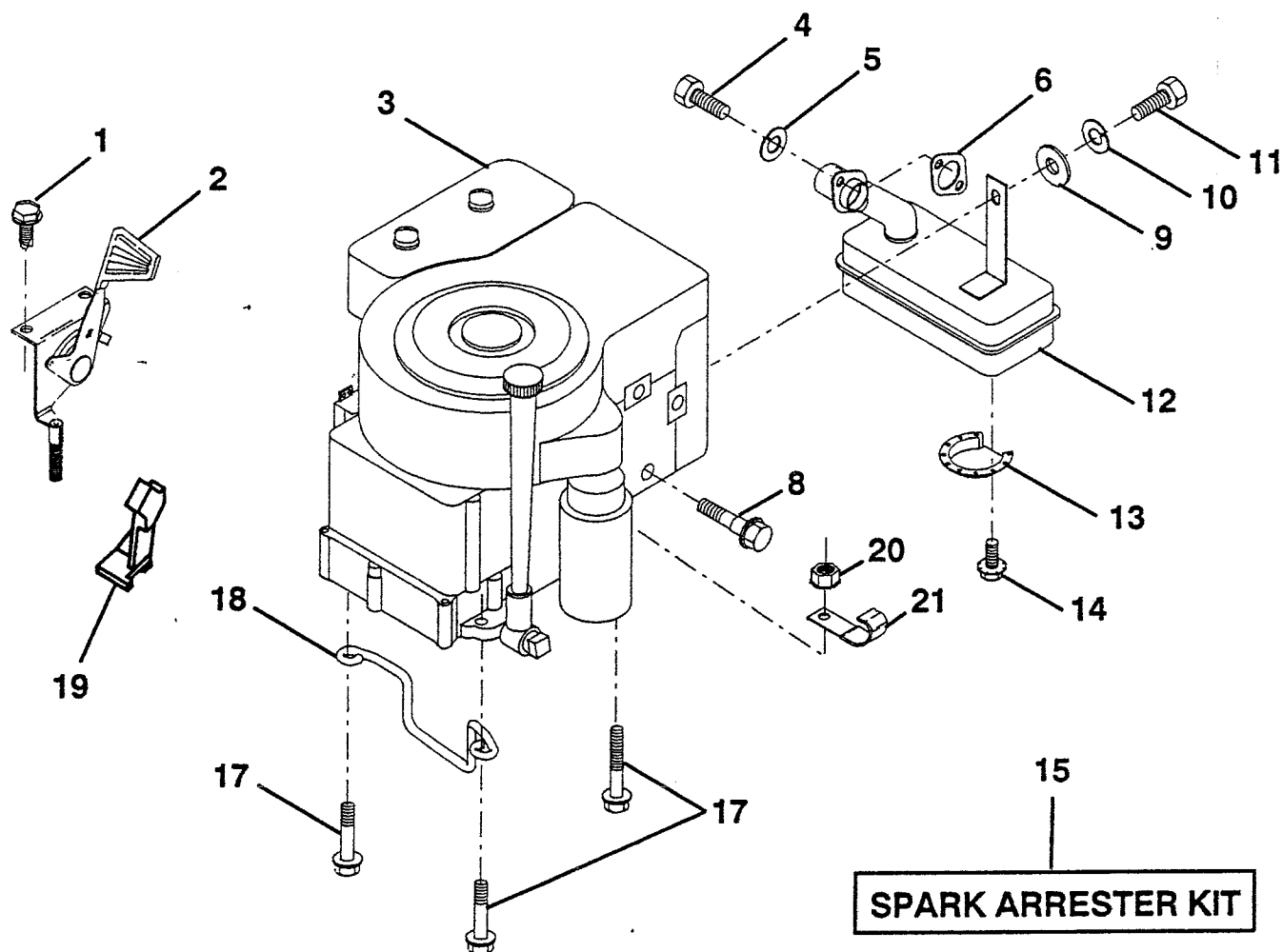
NOTE: All component dimensions given in U.S. inches
1 inch = 25.4 mm

HARDWARE SHOWN LARGER FOR EASIER IDENTIFICATION

REPAIR PARTS

12 HP 38" LAWN TRACTOR - - MODEL NUMBER NN12R38A

ENGINE / THROTTLE



KEY PART NO. NO.

DESCRIPTION

1	17720408	Screw, Hex, Thread Cutting 1/4-20 x 1/2
2	133025	Control, Throttle
3	-----	Engine, Briggs & Stratton, 12.0 HP, Model 283707
4	71070512	Screw, Hex Head Cap 5/16-18 x 3/4
5	10040500	Washer, Lock, Heavy Helical Spring 5/16
6	125593X	Gasket, Exhaust
8	121094X	Bolt, Shoulder
9	19101216	Washer 5/16 x 3/4 x 16 Gauge
10	10040400	Washer, Lock, Heavy Helical Spring 1/4

KEY PART NO. NO.

DESCRIPTION

11	74780416	Bolt, Hex, Fin. 1/4-20 UNC x 1
12	123676X	Muffler
13	101326L	Deflector, Muffler
14	17030808	Screw, Hex, Spiderlock 8 x 1/2 ABTPS
15	121851X	Kit, Spark Arrester (Optional)
17	17490624	Screw, Hex Washer Head, Thd. Roll. 3/8-16 x 1-1/2
18	126636X	Keeper, Ground Drive Belt
19	127951	Stop, Throttle
20	73510600	Nut, Keps 3/8-16
21	2751R	Clip, Fuel Line

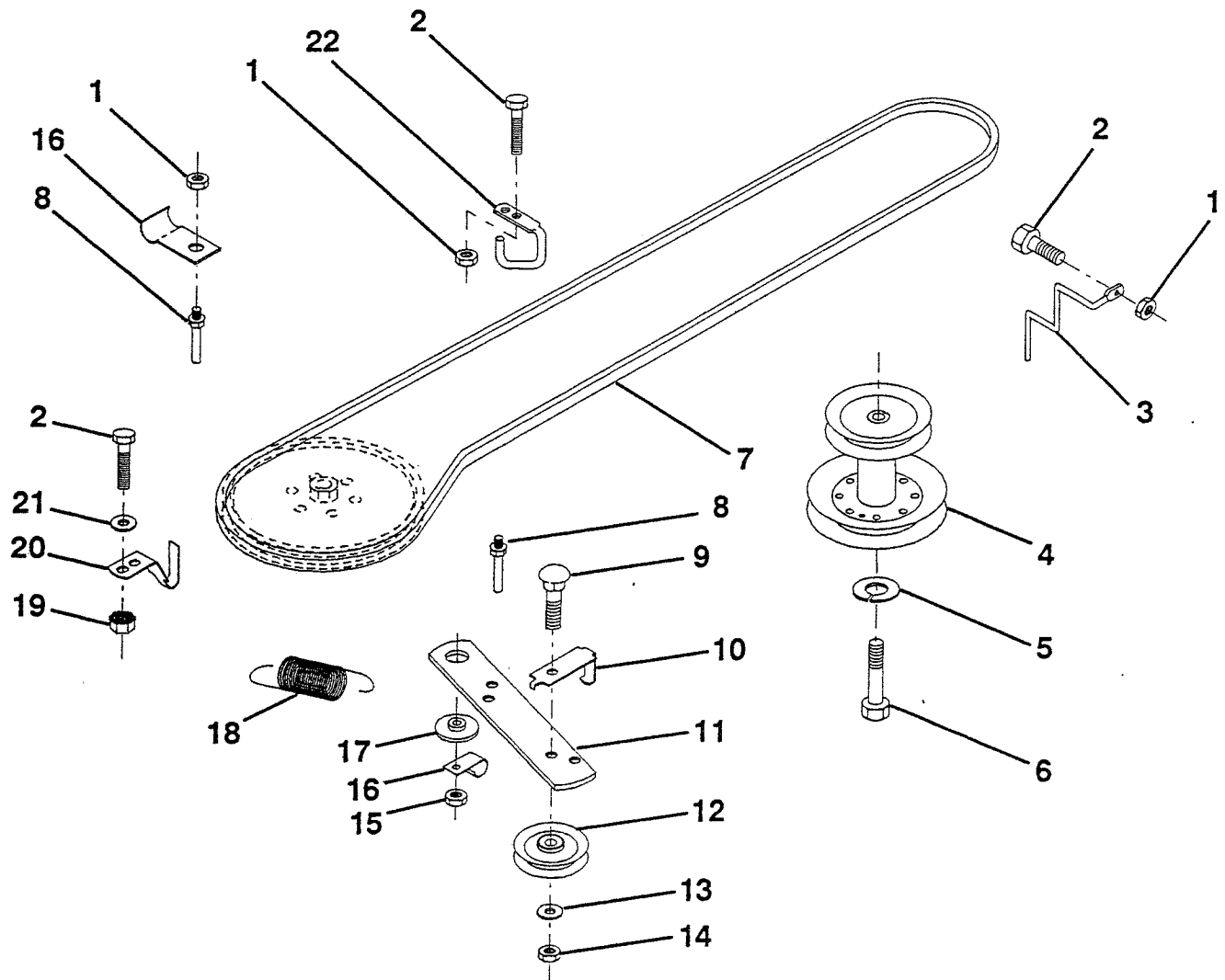
NOTE: All component dimensions given in U.S. inches
1 inch = 25.4 mm

HARDWARE SHOWN LARGER FOR EASIER IDENTIFICATION

REPAIR PARTS

12 HP 38" LAWN TRACTOR - - MODEL NUMBER NN12R38A

GROUND DRIVE



KEY PART NO. NO.

1	73680500	Nut, Crownlock 5/16-18
2	74760512	Bolt, Hex 5/16-18 UNC x 3/4
3	132946	Keeper, Mower Drive Belt, Engine
4	135036	Pulley, Engine
5	10040700	Washer, Lock 7/16
6	71130748	Bolt, Hex, Fin 7/16-20 UNF x 3
7	124525X	Traction, V-Belt Drive
8	123405X	Keeper, T/A Ground Drive Belt
9	72140612	Bolt, Carriage 3/8-16 x 1-1/2
10	123396X	Keeper, Ground Drive Belt, Idler
11	123395X	Arm, Ground Drive Clutch
12	4859J	Idler, Flat
13	19131316	Washer 13/32 x 13/16 x 16 Gauge

KEY PART NO. NO.

14	73930600	Nut, Centerlock 3/8-16 UNC
15	73680600	Nut, Crownlock 3/8-16 UNC
16	126471X	Clip, Insulated
17	122052X	Spacer, Retainer
18	131459	Spring, Extension
19	73510500	Nut, Keps 5/16-18 UNC
20	123891X	Keeper, T/A Ground Drive Belt
21	19111016	Washer 11/32 x 5/8 x 16 Gauge
22	123404X	Keeper, Frame, Ground Drive Belt

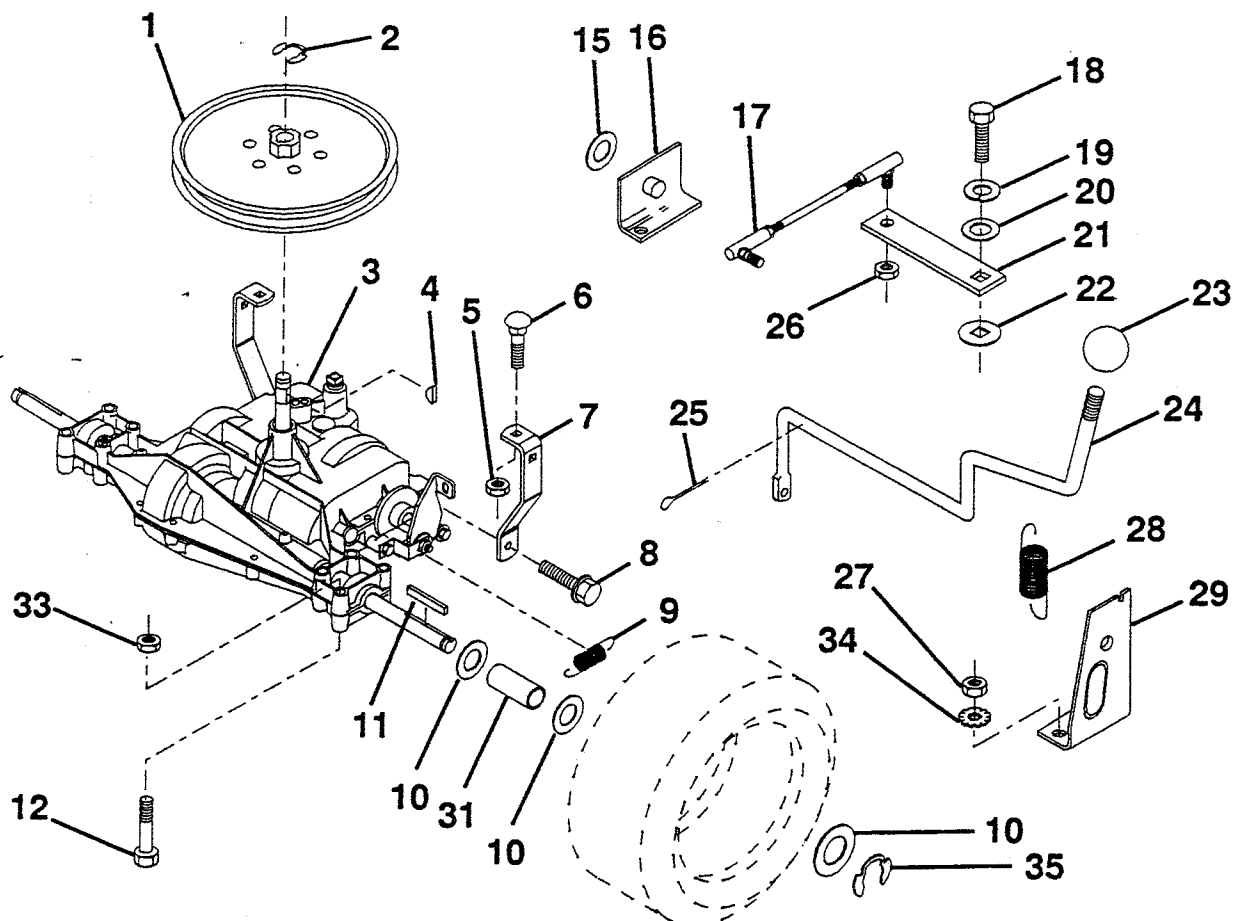
NOTE: All component dimensions given in U.S. inches
1 inch = 25.4 mm

HARDWARE SHOWN LARGER FOR EASIER IDENTIFICATION

REPAIR PARTS

12 HP 38" LAWN TRACTOR - - MODEL NUMBER NN12R38A

TRANSAXLE



KEY PART NO. NO.

DESCRIPTION

1	123385X	Pulley
2	12000028	Ring, Retainer
3	123655X	Transaxle, Foote/Dana, 6 Speed, Model Number 4360-18
4	2228M	Key, Woodruff #9
5	73680500	Nut, Crownlock 5/16-18
6	72140506	Bolt, Carriage 5/16-18 UNC x 3/4
7	123378X	Strap, Torque
8	17490512	Screw, Hex, Thd. Roll. 5/16-18 x 3/4
9	110422X	Spring, Brake
10	121749X	Washer 25/32 x 1-1/4 x 16 Gauge
11	123583X	Key, Square
12	74760644	Bolt, Hex 3/8-16 x 2-3/4
15	19171616	Washer 17/32 x 16 Ga.
16	124600X	Support Handle Shift LH
17	123632X	Link, Shift
18	71040412	Bolt, Hex, Fin. 1/4-28 x 3/4 Gr. 8
9	10040400	Washer, Lock 1/4

KEY PART NO. NO.

DESCRIPTION

20	19091210	Washer 9/32 x 3/4 x 10 Gauge
21	123539X	Arm, Shift
22	105701X	Washer, Shift Plate
23	106933X	Knob
24	128215	Rod, Shift
25	76020416	Pin, Cotter 1/8 x 1
26	73810500	Nut, Hex, Nylon 5/16-24
27	73510500	Nut, Keps 5/16-18
28	128085	Spring, Extension
29	128084	Support Handle Shift RH
31	123409X	Spacer
33	73680600	Nut, Crownlock 3/8-16
34	11050500	Washer, Lock, External Tooth 5/16
35	12000001	E-Ring

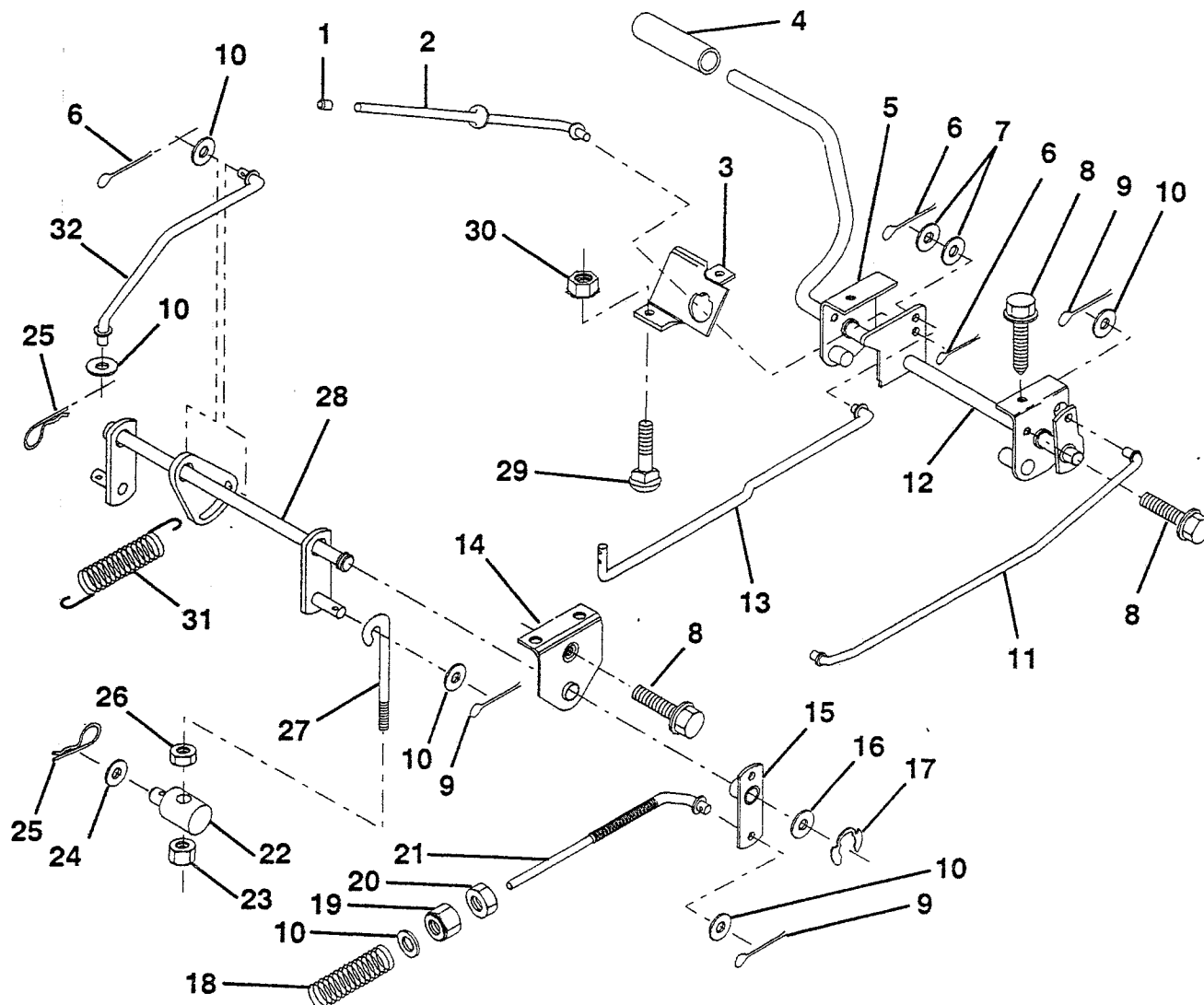
NOTE: All component dimensions given in U.S. inches
1 inch = 25.4 mm

HARDWARE SHOWN LARGER FOR EASIER IDENTIFICATION

REPAIR PARTS

12 HP 38" LAWN TRACTOR - - MODEL NUMBER NN12R38A

BRAKE / REAR MOWER LIFT ASSEMBLY



KEY PART NO. NO.

DESCRIPTION

1	71673	Cap, Plunger
2	123436X	Rod, Parking Brake
3	123437X	Bracket, Parking Brake
4	8883R	Cover, Pedal
5	132205	Bracket Assy., Clutch Pedal, LH
6	76020312	Pin, Cotter 3/32 x 3/4
7	19131016	Washer 13/32 x 5/8 x 16 Gauge
8	17490508	Screw, Hex, Thd. Roll. 5/16-18 x 1/2
9	76020412	Pin, Cotter 1/8 x 3/4
10	19131316	Washer 13/32 x 13/16 x 16 Gauge
11	123543X	Rod, Front Brake
12	136263	Assembly, Clutch/Brake Pedal
13	123394X	Rod, Clutch
14	121978X	Bracket, Lift, Shaft
15	123641X	Assembly, Brake, Pivot, Arm
16	19251816	Washer 25/32 x 1-1/8 x 16 Gauge
17	12000034	Ring, Klip

KEY PART NO. NO.

DESCRIPTION

18	106888X	Spring, Brake Rod
19	73350600	Nut, Hex, Jam 3/8-16 UNC
20	73680600	Nut, Crownlock 3/8-16 UNC
21	131460	Rod, Rear Brake
22	127378	Trunnion, Lift
23	73680600	Nut, Crownlock 3/8-16 UNC
24	19132012	Washer 13/32 x 1-1/4 x 12 Gauge
25	4921H	Spring, Retainer
26	73930600	Nut, Centerlock 3/8-16 UNC
27	132218	Link, Threaded
28	132221	Assembly, Rear Mower Lift
29	72110506	Bolt, Carriage 5/16-18 UNC x 3/4
30	73510500	Nut, Keps 5/16-18 UNC
31	133095	Spring, Counterbalance
32	133721	Link, Lift Lever

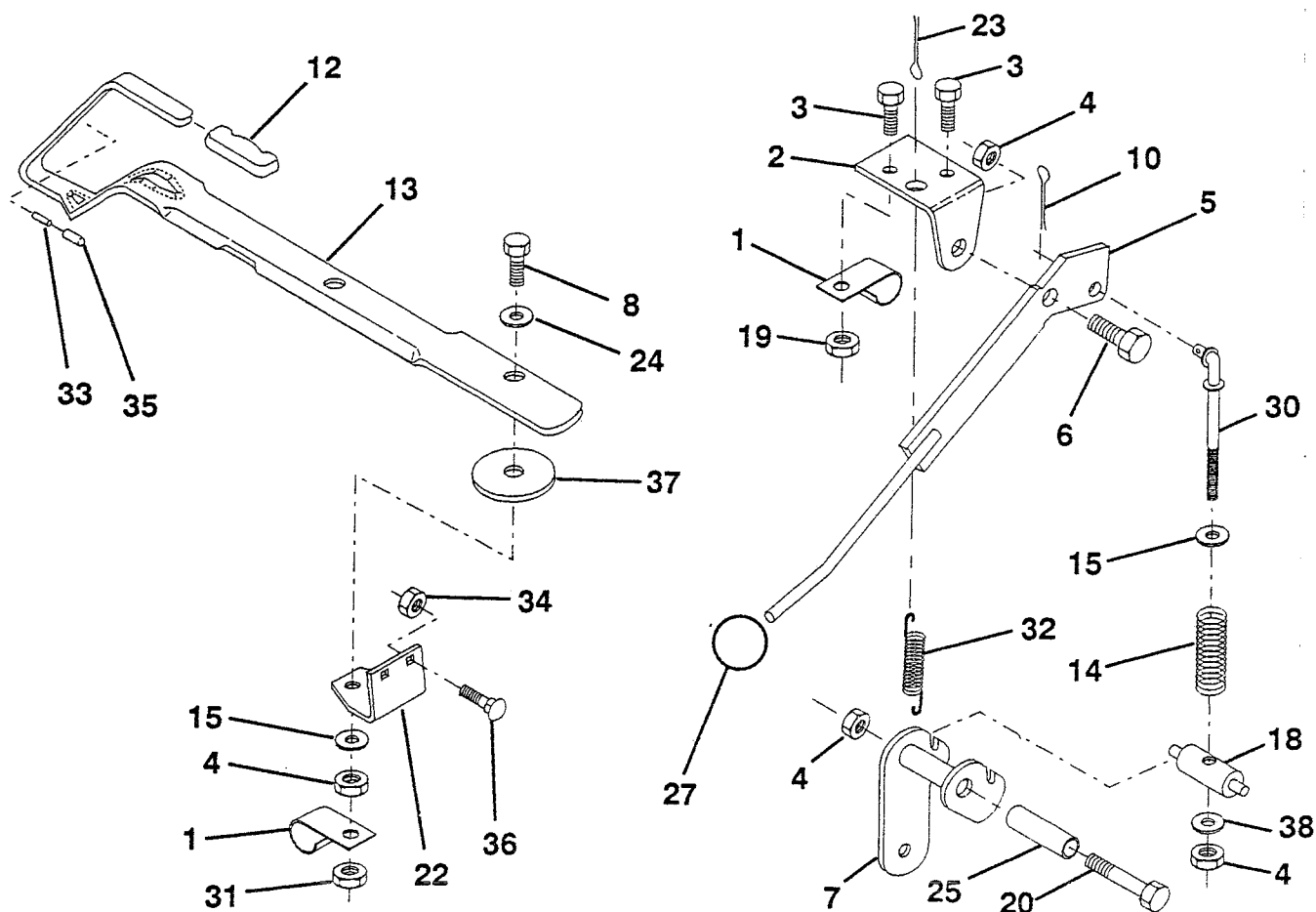
NOTE: All component dimensions given in U.S. inches
1 inch = 25.4 mm

HARDWARE SHOWN LARGER FOR EASIER IDENTIFICATION

REPAIR PARTS

12 HP 38" LAWN TRACTOR - - MODEL NUMBER NN12R38A

MOWER LIFT LEVER



KEY PART NO. NO.

DESCRIPTION

1	126470X	Clip, Fuel Line
2	122018X	Bracket, Mower Clutch
3	74780408	Bolt, Hex, Fin 1/4-20 UNC x 1/2 Grade 5
4	73680600	Nut, Crownlock 3/8-16 UNC
5	132552	Assembly, Clutch Lever
6	106451X	Bolt, Shoulder
7	135110	Assembly, Mower Clutch Arm
8	74930624	Bolt, Hex 3/8-16 x 1-1/2
10	76020412	Pin, Cotter 1/8 x 3/4
12	131861	Handle, Lift Lever
13	132558	Assembly, Lift Handle
14	133939	Spring, Compression, Clutch
15	19131616	Washer 13/32 x 1 x 16 Gauge
18	135107	Trunnion
19	73680400	Nut, Crownlock 1/4-20

KEY PART NO. NO.

DESCRIPTION

20	74760644	Bolt, Hex, Fin. 3/8-16 UNC x 2-3/4
22	132561	Bracket, Lift Lever
23	76020312	Pin, Cotter 3/32 x 3/4
24	7672J	Washer 25/64 x 1-1/4 x 12 Gauge
25	121933X	Tube, Spacer
27	106932X	Knob
30	135039	Rod, Tension, Clutch
31	73930600	Nut, Centerlock 3/8-16
32	133435	Spring, Extension, Return
33	407H	Pin, Roll (Furnished with Key #13)
34	73680500	Nut, Crownlock 5/16-18
35	133603	Cap, Vinyl, Red
36	72140506	Bolt, Carriage 5/16-18 x 3/4
37	19133808	Washer 13/32 x 2-3/8 x 8 Ga.
38	19131410	Washer 13/32 x 7/8 x 10 Ga.

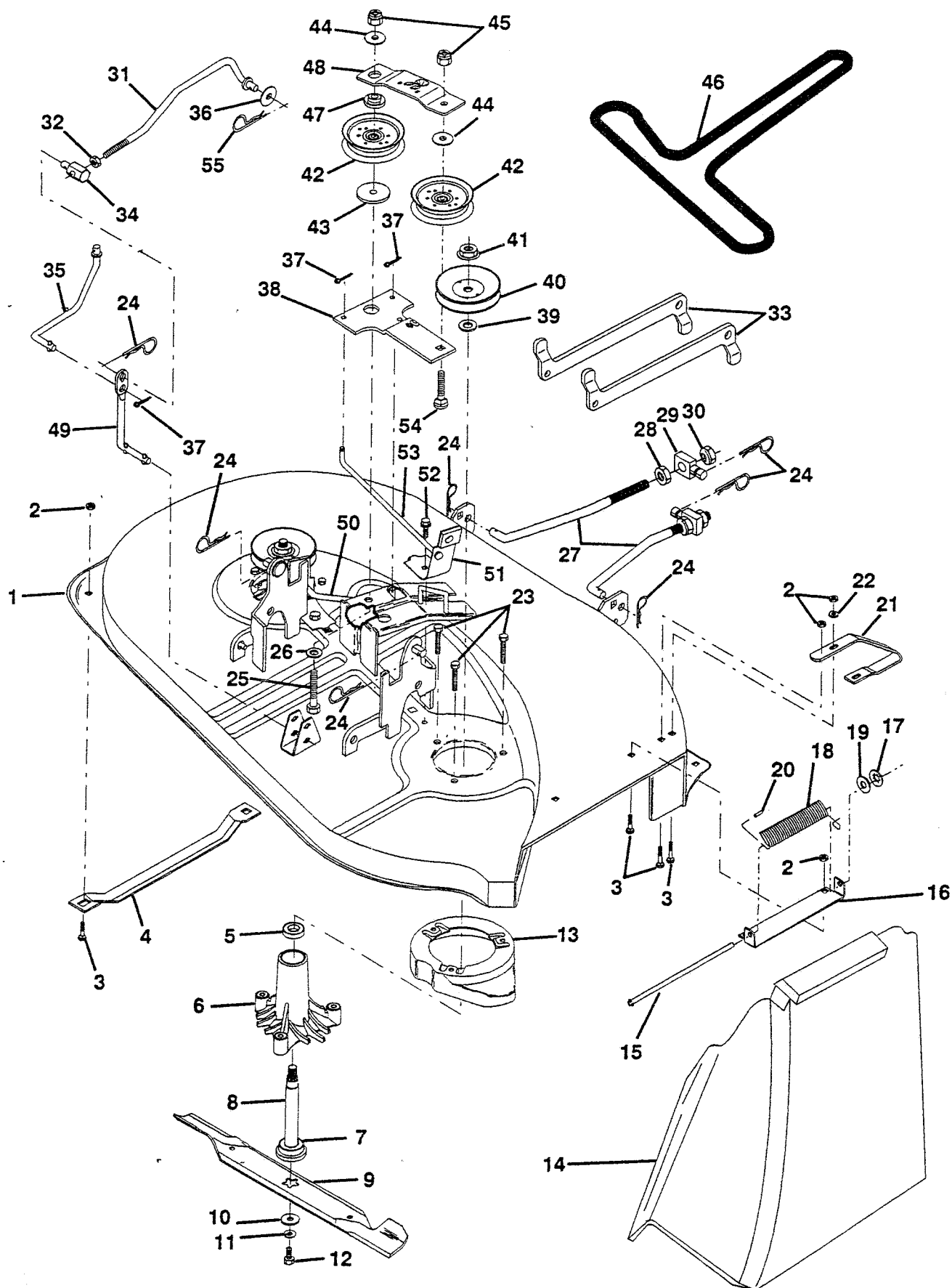
NOTE: All component dimensions given in U.S. inches
1 inch = 25.4 mm

HARDWARE SHOWN LARGER FOR EASIER IDENTIFICATION

REPAIR PARTS

12 HP 38" LAWN TRACTOR - - MODEL NUMBER NN12R38A

MOWER DECK



REPAIR PARTS

12 HP 38" LAWN TRACTOR - - MODEL NUMBER NN12R38A

MOWER DECK

KEY NO.	PART NO.	DESCRIPTION
1	132564	Mower Deck Assembly
2	73680500	Nut, Crownlock 5/16-18
3	72140506	Bolt, Carriage 5/16-18 x 3/4
4	7631J	Runner, L.H.
5	110485X	Bearing
6	128774	Housing, Mandrel
7	129895	Bearing
8	133172	Shaft & Bearing Assembly, Mandrel (includes key #7)
9	127842	Blade, High Performance
10	129962	Washer, Hard
11	10030600	Washer, Lock 3/8
12	850857	Bolt 3/8-24 x 1-1/4 Grade 8
13	128961	Stripper, Mower, Vented
14	106736X	Shield, Deflector
15	106735X	Rod, Hinge
16	105896X	Bracket Assembly, Deflector
17	110452X	Pushnut
18	106734X	Spring, Deflector
19	19111016	Washer 11/32 x 5/8 x 16 Gauge
20	105304X	Cap, Sleeve
21	128772	Runner, R.H.
22	19111216	Washer 11/32 x 3/4 x 16 Gauge
23	78158	Bolt 5/16-18 x 1-1/4
24	4939M	Retainer, Spring
25	74600636	Bolt, Carriage 3/8-16 x 2-1/4
26	19131612	Washer 13/32 x 1 x 12 Gauge
27	132256	Link Assembly, Front
28	73350800	Nut, Hex, Jam 1/2-13 UNC
29	130171	Trunnion
30	73800800	Locknut with Washer Insert 1/2-13 UNC

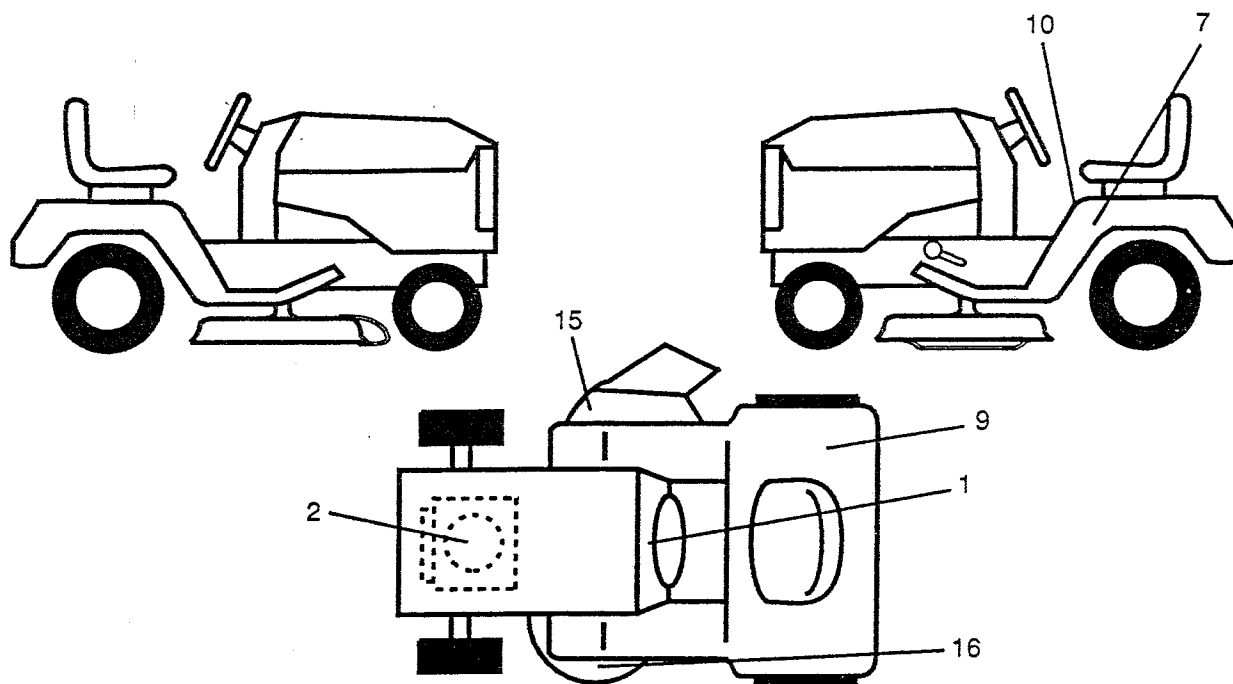
KEY NO.	PART NO.	DESCRIPTION
31	132553	Rod, Clutch, Primary
32	73350600	Nut, Hex, Jam 3/8-16
33	132559	Arm, Suspension, Rear
34	133604	Trunnion 3/8-16
35	132554	Rod, Clutch, Secondary
36	19131316	Washer 13/32 x 13/16 x 16 Gauge
37	76020312	Pin, Cotter 3/32 x 3/4
38	133840	Idler Arm
39	129963	Washer .150 Thick
40	129206	Pulley, Mandrel
41	73050900	Nut, Flangelock 9/16
42	131494	Pulley, Flat Idler
43	122052X	Spacer, Retainer
44	19131612	Washer 13/32 x 1 x 12 Gauge
45	73680600	Nut, Crownlock 3/8-16
46	131290	Belt
47	133502	Spacer, Idler Arm
48	133503	Stiffener, Idler Arm
49	133551	Rod, Pivot
50	131289	Rod, Brake, L.H.
51	130840	Brake Assembly
52	17490512	Screw, Hex Washer Head, Thd., Roll. 5/16-18 x 3/4
53	131288	Rod, Brake, R.H.
54	72110614	Bolt, Carriage 3/8-16 x 1-3/4 Grade 5
55	4497H	Spring, Retainer
--	134370	Mower Deck, Complete
--	130794	Mandrel Asm (Includes Key #'s 5-8, 10-12, 39 and 41)

NOTE: All component dimensions given in U.S. inches
1 inch = 25.4 mm

REPAIR PARTS

12 HP 38" LAWN TRACTOR - - MODEL NUMBER NN12R38A

DECALS



KEY PART NO. NO.

DESCRIPTION

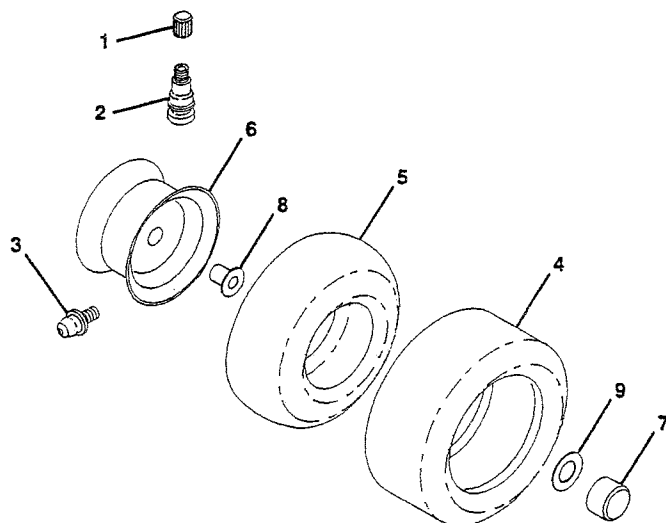
1	123637X	Decal, Instruction, Engine
2	120601X	Decal, Engine, HP
7	132928	Decal Height Indicator
9	125690X	Decal 100DBA
10	133795	Decal, Caution

KEY PART NO. NO.

DESCRIPTION

15	121349X	Decal, Danger
16	109820X	Decal, Rotating Blades
--	134595	Manual, Operator's, English
--	134594	Manual, Operator's, French
--	136605	Manual, Parts

WHEELS & TIRES



KEY PART NO. NO.

DESCRIPTION

1	59192	Cap, Valve
2	65139	Stem, Valve
3	278H	Fitting, Grease (Front Only)
4	132696	Tire, Front
	132703	Tire, Rear
5	59904	Tube, Tire, Front
	8134H	Tube, Tire, Rear
		(Not Supplied, Service Item Only)
6	122394X361	Rim, Front
	123412X361	Rim, Rear
7	104757X	Cap, Axle (Front and Rear)
8	9040H	Bearing, Flange (Front only)
9	121748X	Washer 25/32 x 1-5/8 x 16 Gauge

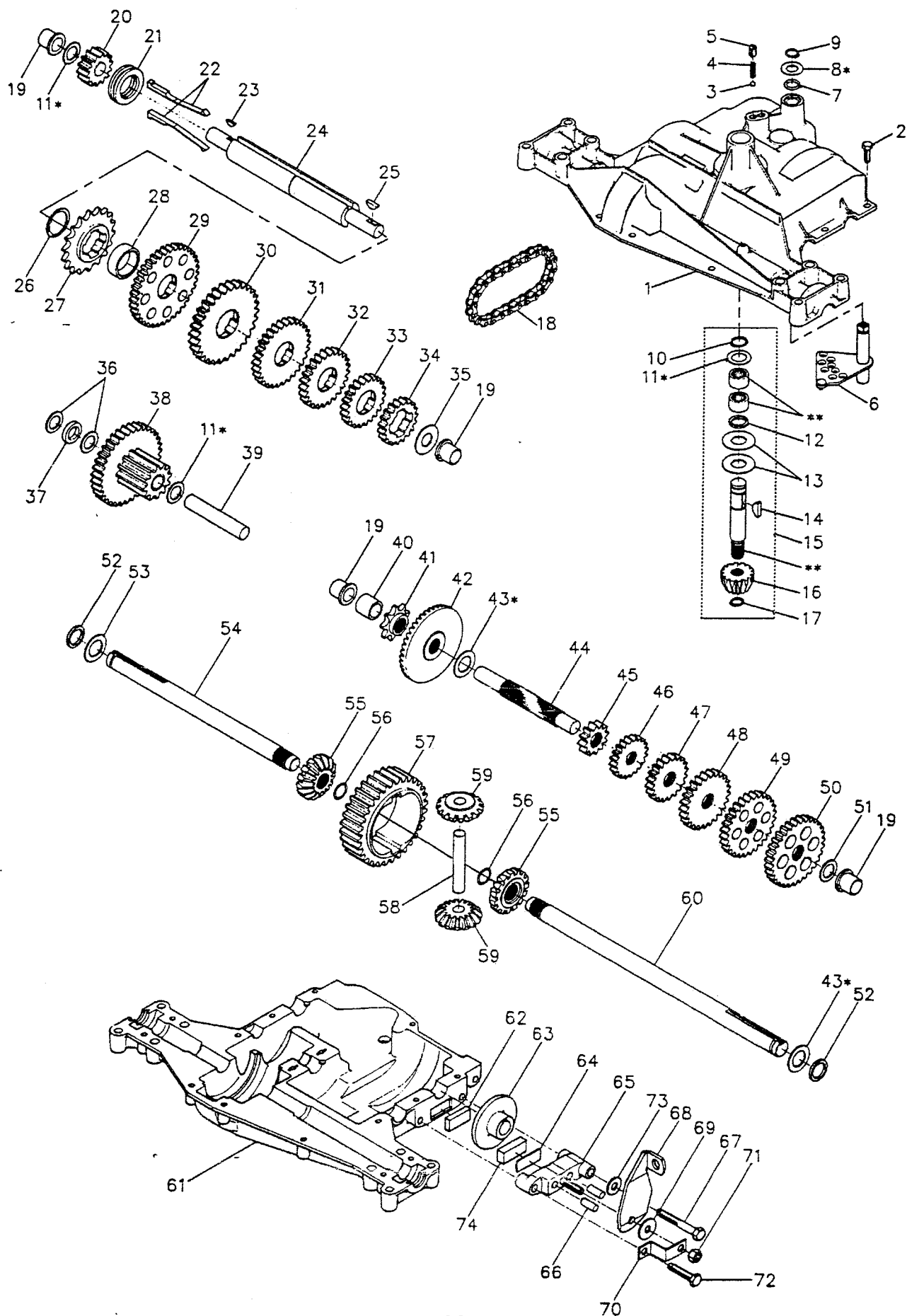
NOTE: All component dimensions given in U.S. inches
1 inch = 25.4 mm

HARDWARE SHOWN LARGER FOR EASIER IDENTIFICATION

REPAIR PARTS

12 HP 38" TRACTOR - - MODEL NUMBER NN12R38A

TRANSAXLE



REPAIR PARTS

12 HP 38" TRACTOR -- MODEL NUMBER NN12R38A

TRANSAXLE

KEY PART NO. NO.	DESCRIPTION
1 3865	Housing, Upper
2 1919	Screw, Tapping, Large 1/4-20 x .734
3 1151	Ball, Detent
4 3626	Spring, Detent
5 3623	Screw, Set
6 4336	Assembly, Shifter
7 3884	O-Ring
8 3885	* Washer, Plain .505 x .942 x .006
3886	* Washer, Plain .505 x .942 x .010
3887	* Washer, Plain .505 x .942 x .015
3888	* Washer, Plain .505 x .942 x .020
3889	* Washer, Plain .505 x .942 x .026
3121	* Washer, Plain .505 x .942 x .030
3890	* Washer, Plain .505 x .942 x .040
9 1100	Ring, Retaining
10 1099	Ring, Retaining
11 1959	* Washer, Plain .632 x 1.00 x .010
1441	* Washer, Plain .632 x 1.00 x .020
1423	* Washer, Plain .632 x 1.00 x .026
1082	* Washer, Plain .632 x 1.00 x .031
1424	* Washer, Plain .632 x 1.00 x .036
1068	* Washer, Plain .632 x 1.00 x .041
1425	* Washer, Plain .632 x 1.00 x .046
1358	* Washer, Plain .632 x 1.00 x .050
1145	* Washer, Plain .632 x 1.00 x .060
1319	* Washer, Plain .632 x 1.00 x .082
12 3312	O-Ring
13 3876	Washer, Plain .632 x 1.38 x .046
14 1374	Key, Woodruff #9
15 4134	Assembly, Kit, Input Shaft
16 3590	Pinion, Bevel, 14 Teeth
17 3624	Ring, Retaining
18 3625	Chain, 24 Pitches
19 1542	Bearing, Flange
20 3773	Gear, Spur, 14 Teeth
21 3631	Collar, Clutch
22 3828	Key, Clutch
23 1369	Key, Woodruff #3
24 3883	Shaft, Intermediate
25 1375	Key, Woodruff #61
26 3627	Ring, Retaining
27 3830	Sprocket, 18 Teeth
28 3841	Spacer
29 3786	Gear, Spur, 37 Teeth
30 3785	Gear, Spur, 35 Teeth
31 3867	Gear, Spur, 30 Teeth
32 3783	Gear, Spur, 25 Teeth
33 3869	Gear, Spur, 22 Teeth
34 3741	Gear, Spur, 19 Teeth
35 3628	Washer, Plain .640 x 1.37 x .061
36 1423	Washer, Plain .632 x 1.00 x .026
37 3422	Spacer .630 x 1.00 x .169
38 4286	Assembly, Gear, Combination of 12 Teeth and 35 Teeth
39 3877	Shaft, Idler
40 3901	Spacer .635 x .875 x .755
11 3645	Sprocket, 9 Teeth

KEY PART NO. NO.	DESCRIPTION
42 3853	Gear, Bevel, 42 Teeth
43 3749	* Washer, Plain .758 x 1.12 x .010
3652	* Washer, Plain .758 x 1.12 x .015
3693	* Washer, Plain .758 x 1.12 x .020
3653	* Washer, Plain .758 x 1.12 x .025
3408	* Washer, Plain .758 x 1.25 x .020
3732	* Washer, Plain .758 x 1.25 x .025
3184	* Washer, Plain .758 x 1.25 x .031
3733	* Washer, Plain .758 x 1.25 x .035
3198	* Washer, Plain .758 x 1.25 x .040
3734	* Washer, Plain .758 x 1.25 x .045
3735	* Washer, Plain .758 x 1.25 x .050
3736	* Washer, Plain .758 x 1.25 x .055
3180	* Washer, Plain .758 x 1.25 x .062
44 3882	Shaft, Drive
45 3646	Gear, Spur, 12 Teeth
46 3707	Gear, Spur, 15 Teeth
47 3866	Gear, Spur, 20 Teeth
48 3719	Gear, Spur, 25 Teeth
49 3868	Gear, Spur, 28 Teeth
50 3683	Gear, Spur, 31 Teeth
51 1145	Washer, Plain .632 x 1.00 x .060
52 3191	Seal, Felt
53 3180	Washer, Plain .758 x 1.25 x .062
54 3980	Axle, Left Hand
55 3780	Gear, Miter, 15 Teeth
56 3656	Ring, Retaining
57 3839	Gear, Spur, 32 Teeth
58 3919	Shaft, Cross
59 3781	Gear, Miter, 15 Teeth
60 3981	Axle, Right Hand
61 3864	Housing, Lower
62 3920	Puck, Friction
63 3276	Disc, Brake
64 3758	Spacer
65 3916	Jaw, Brake
66 3843	Pin, Dowel
67 3915	Screw, Tapping, Large 5/16-18 x 2.25
68 3768	Lever, Actuating
69 3760	Washer, Plain .321 x 1.00 x .055
70 3917	Bracket, Anti-Rotation
71 3847	Locknut 5/16-24
72 3724	Screw, Tapping, Large 5/16-18 x 1.44
73 3906	Washer, Plain .343 x .81 x .059
74 3907	Puck, Friction
75 4300	Grease

* Use In Various Combinations To Maintain Proper Clearances.

** Order Key Number 15

NOTE: All component dimensions given in U.S. inches
1 inch = 25.4 mm

Parts must be ordered from Dana Corporation.