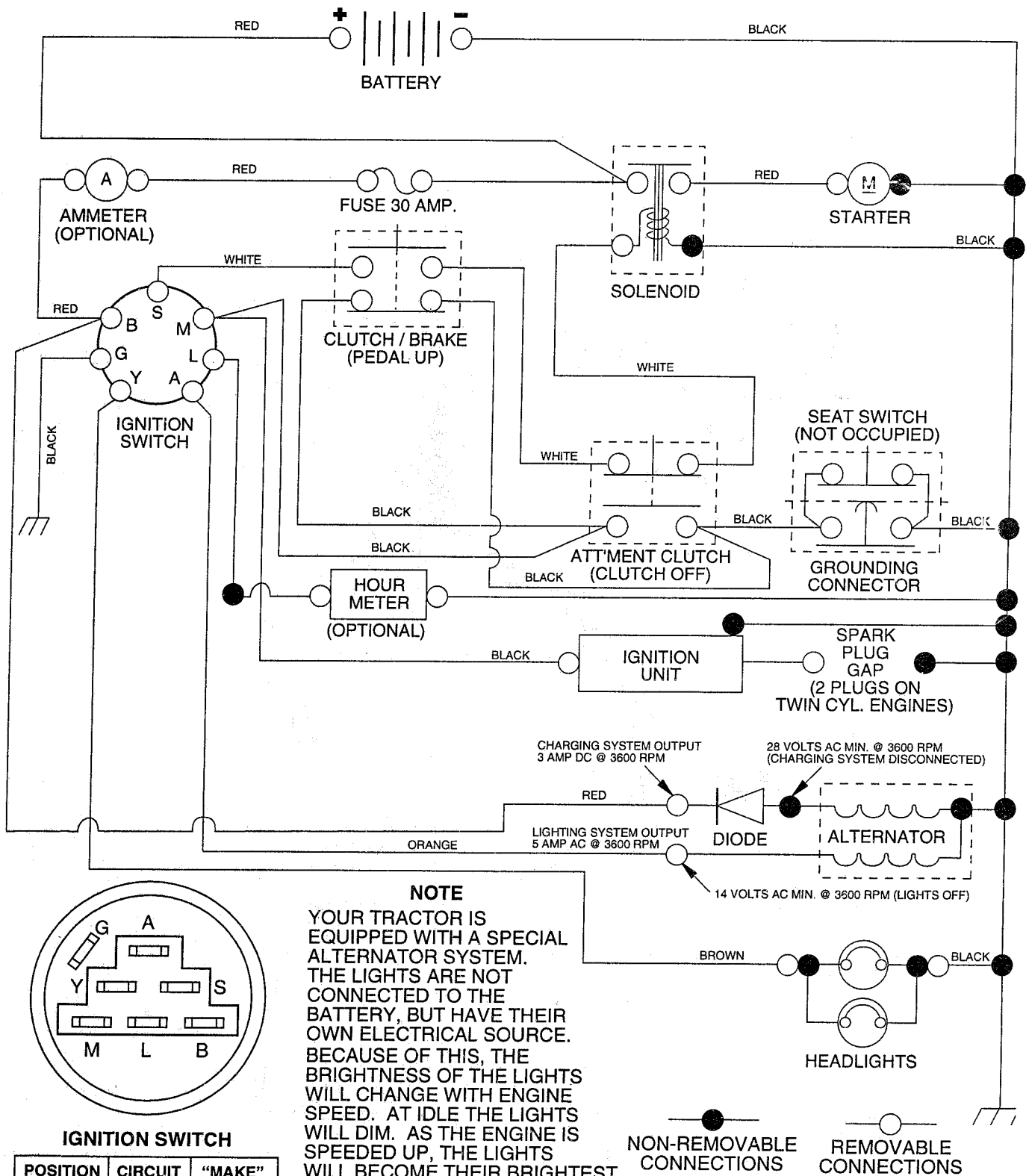


TRACTOR - - MODEL NUMBER RE12538C

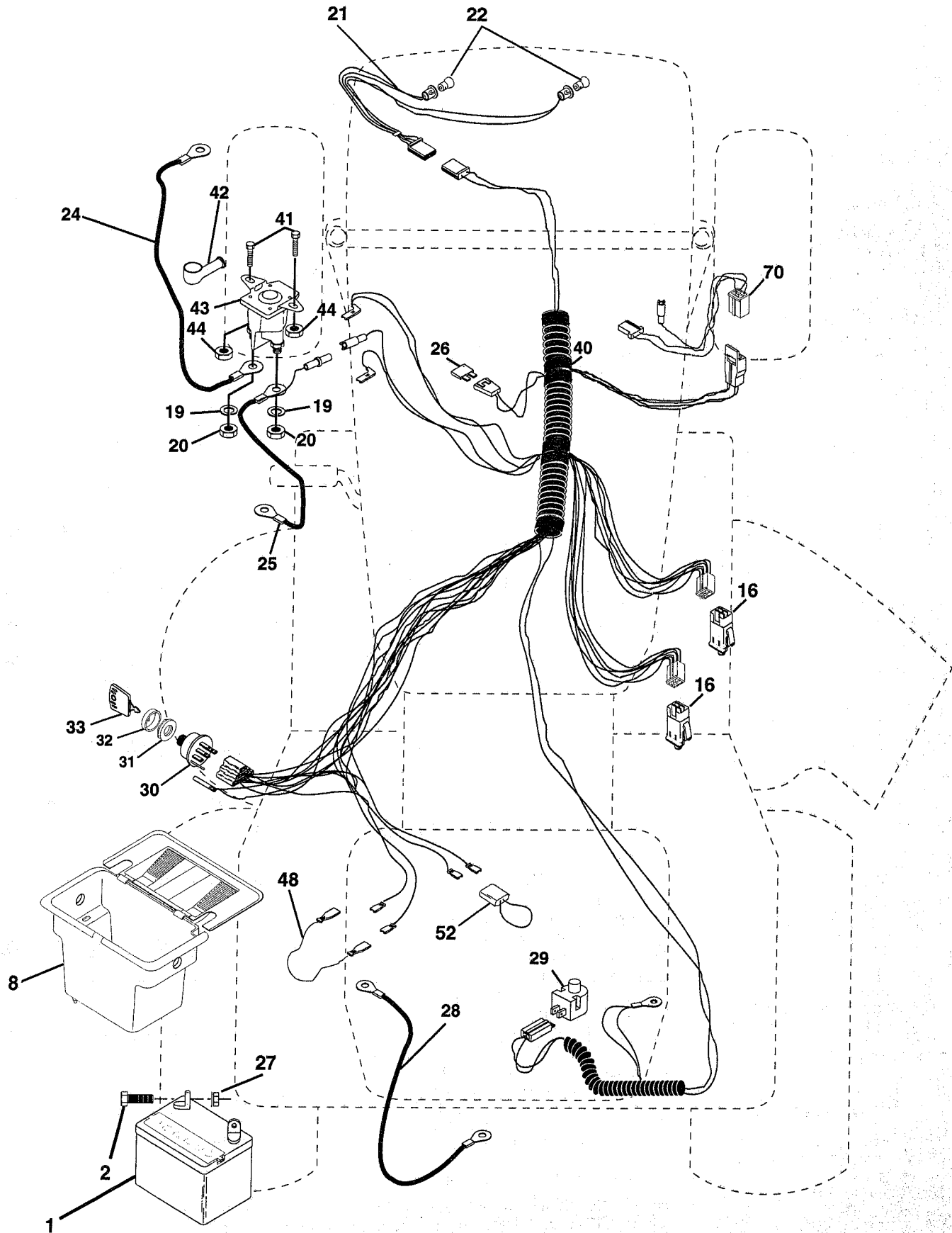
SCHEMATIC



REPAIR PARTS

TRACTOR -- MODEL NUMBER RE12538C

ELECTRICAL



REPAIR PARTS

TRACTOR - - MODEL NUMBER RE12538C

ELECTRICAL

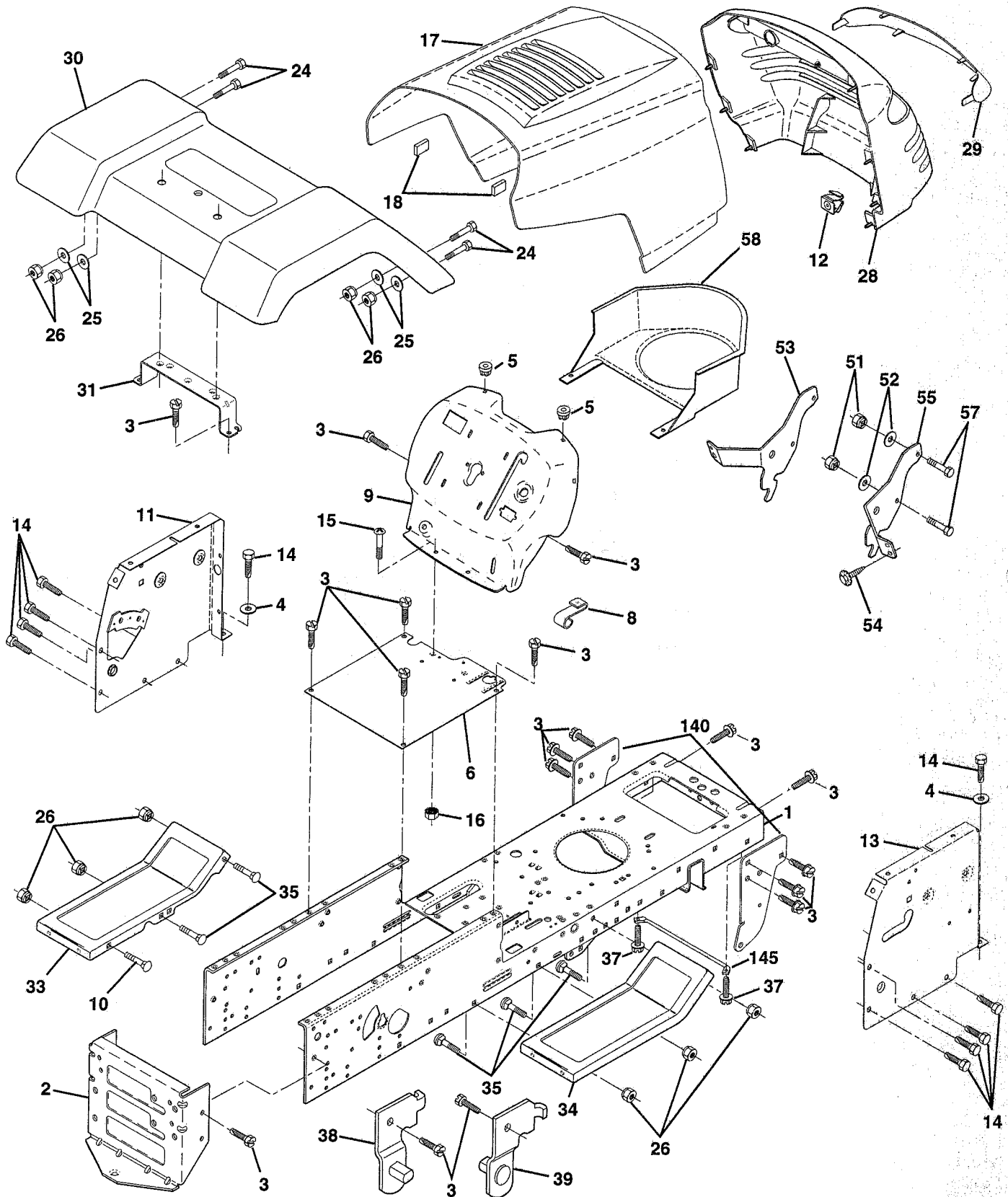
KEY NO.	PART NO.	DESCRIPTION
1	144925	Battery 12 Volt 25 Amp
2	74760412	Bolt Hex Hd 1/4-20unc X 3/4
8	156417	Case Battery
16	153664	Switch Interlock Push-In
19	10090400	Washer Lock 1/4
20	73350400	Nut Jam Hex 1/4-20 Unc
21	166181	Harness Asm Light W/4152J
22	4152J	Bulb Light #1156
24	4799J	Cable Battery 6 Ga 11"red
25	146147	Cable Battery 6 Ga red W/ 16" Wire
26	166180	Fuse 15 AMP
27	73510400	Nut Keps Hex 1/4-20
28	4207J	Cable Ground 6 Ga 12" black
29	121305X	Switch Plunger Nc Gray
30	140301	Switch, Ignition
31	124211X	Nut Ignition
32	141226	Cover Sw Ignition
33	122147X	Key Ign
40	166145	Harness Ign
41	71110408	Bolt Blk Fin Hex 1/4-20 x 1/2
42	131563	Cover Terminal Red
43	145673	Solenoid
44	73640400	Nut Keps Hex 1/4-20 Unc
48	140844	Adapter Ammeter Rectangular
52	141940	Protection Wire Loop
70	166658	Harness Eng Briggs/Tec Dual

NOTE: All component dimensions give in U.S. inches
1 inch = 25.4 mm.

REPAIR PARTS

TRACTOR - - MODEL NUMBER RE12538C

CHASSIS AND ENCLOSURES



REPAIR PARTS

TRACTOR - - MODEL NUMBER RE12538C

CHASSIS AND ENCLOSURES

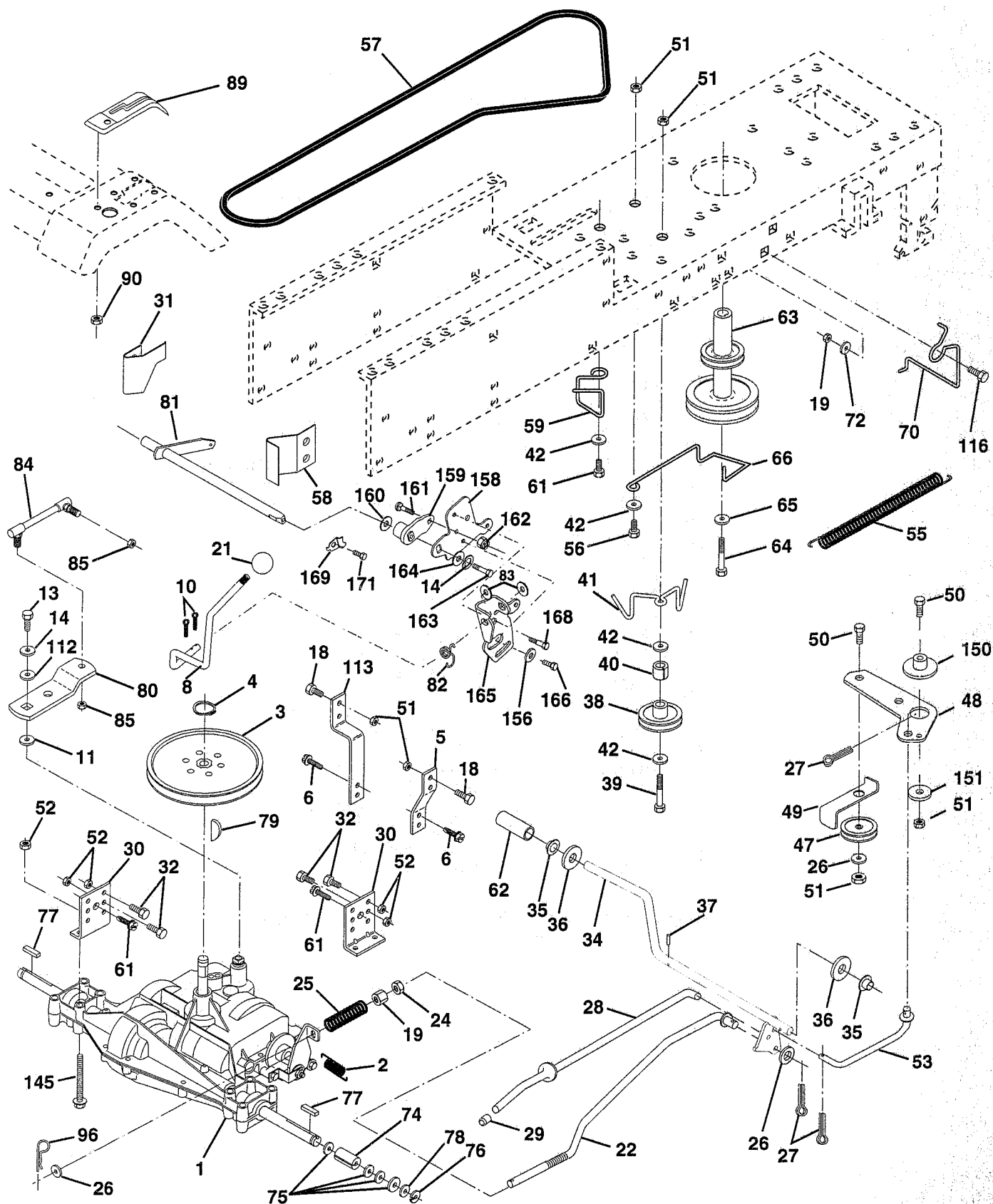
KEY NO.	PART NO.	DESCRIPTION
1	165480	Chassis
2	140356	Drawbar
3	17490612	Screw, Thd., Roll. 3/8-16 x 3/4 Type-TT
4	19131216	Washer 13/32 x 3/4 x 16 Gauge
5	155272	Bumper Hood/Dash
6	155923	Saddle
8	155138	Clip, Retainer Slide-On
9	161937X011	Dash
10	72140608	Bolt, Carriage 3/8-16 x 1
11	155927	Dashboard, panel LH
12	145660	Clip Tinnerman Grille P/L
13	155934X010	Dashboard, panel RH
14	17490608	Hex head tread rolling screw 3/8-16 x 1/2 Ty-tt
15	74180512	Machine screw 5/16-18 unc x 3/4
16	73510500	Nut, Keps 5/16-18 Unc
17	159639X505	Hood Pnt Stl P/L w/Trim 505
18	126938X	Bumper Hood
24	74780616	Bolt, Hex Head, Fin. 3/8-16 x 1 Grade 5
25	19131312	Washer 13/32 x 13/16 x12 Gauge
26	73800600	Nut Lock Hex w/Ins. 3/8-16 Unc
28	157373	Grille
29	140273X599	Lens Grille
30	166886X505	Fender
31	136619	Fender Bracket
33	105476X505	Footrest, LH
34	105475X505	Footrest, RH
35	72110606	Bolt 3/8-16 X 3/4
37	17490508	Screw Thdrol 5/16-18 x 1/2
38	139886	Mower Pivot Bracket, LH
39	139887	Mower Pivot Bracket, RH
51	73800400	Nut Lock, w/Insert 14/20 UNC
52	19091416	Washer 9/32 x 7/8 x 16 Ga.
53	144697	Bracket Grille
54	161464	Screw Hex WsHd 8-18 x 7/8
55	144696	Bracket Grille RH
57	74780412	Bolt FinHex 1/4-20 UNC x .75
58	150127	Duct Air Engine P/L LT
140	158418	Bracket Suspension Front
145	156524	Rod Pivot Chassis/Hood
--	5479J	Button Plug

NOTE: All component dimensions given in U.S. inches
1 inch = 25.4 mm

REPAIR PARTS

TRACTOR - - MODEL NUMBER RE12538C

DRIVE



REPAIR PARTS

TRACTOR - - MODEL NUMBER RE12538C

DRIVE

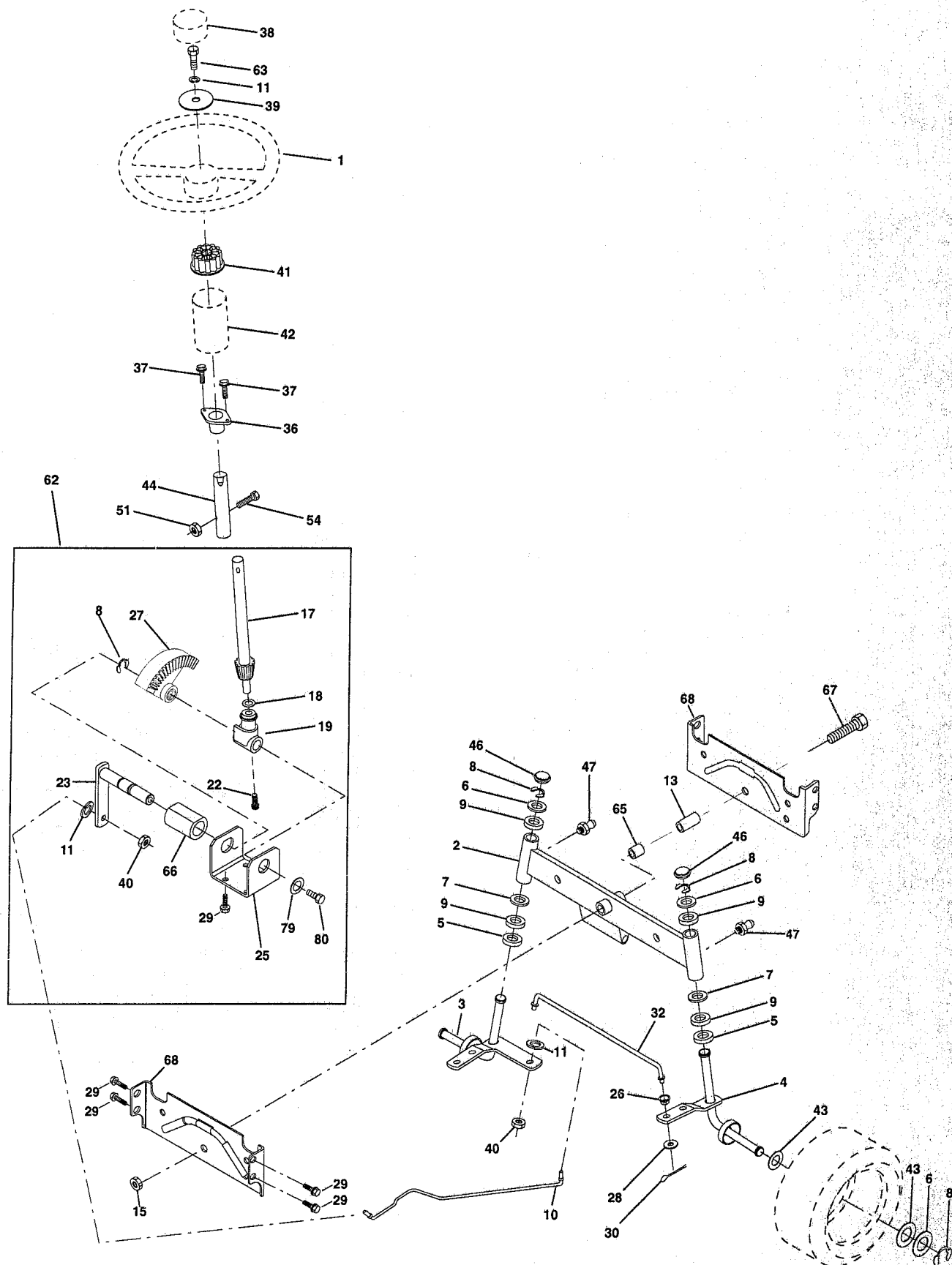
KEY PART NO. NO.	DESCRIPTION	KEY PART NO. NO.	DESCRIPTION
1 - - - - -	Transaxle, Peerless 205-544C Order Parts From Transaxle Manufacturer	58 127274X	Keeper, Belt, Transaxle, R.H.
2 146682	Spring, Brake Return	59 140312	Retainer, Belt
3 123666X	Pulley, Transaxle	61 17490612	Screw, Hex Washer Head, Thd., Roll. 3/8-16 x 3/4
4 12000028	Ring, Retainer	62 8883R	Cover, Foot Pedal
5 121520X	Strap, Torque	63 140186	Pulley, Engine
6 17490512	Screw, Hex, Washer, Thread Rolling 5/16-18 x 3/4	64 71170764	Bolt, Hex 7/16-20 x 4 Gr. 5
8 165619	Rod, Shifter	65 10040700	Washer, Lock Hvy Hlcl Spr 7/16
10 76020416	Pin, Cotter 1/8 x 1	66 154778	Keeper, Belt Engine F-Proof
11 105701X	Washer, Shift Plate	70 134683	Guide Belt Mower Drive RH
13 74550412	Bolt 1/4-28 UNF Gr. 8 w/Patch	72 19132012	Washer 13/32 x 1-1/4 x 12 Ga.
14 10040400	Washer Lock	74 137057	Spacer, Split
18 74780616	Bolt, Fin Hex 3/8-16 Unc x 1 Gr. 5	75 121749X	Washer 25/32 x 1-1/4 x 16 Ga.
19 73800600	Locknut 3/8-16	76 12000001	E-Ring
21 106933X	Knob	77 123583X	Key Square
22 130804	Rod, Brake	78 121748X	Washer 25/32 x 1-5/8 x 16 Ga.
24 73350600	Nut, Hex Jam 3/8-16	79 2228M	Key Woodruff #9 3/16 x 3/4
25 106888X	Spring, Rod, Brake	80 131486	Shift Arm
26 19131316	Washer 13/32 x 13/16 x 16 Gauge	81 165594	Shaft, Assembly, Cross
27 76020412	Pin, Cotter 1/8 x 3/4	82 123782X	Spring, Torsion
28 145204	Rod, Brake, Park	83 19171216	Washer 17/32 x 3/4 x 16 Gauge
29 71673	Cap, Plunger	84 166228	Link Transaxle
30 130807	Bracket, Transaxle, L.H.	85 150360	Nut 1/4-28
31 127275X	Keeper, Belt, Transaxle, L.H.	89 139963X428	Console Shift
32 74760512	Bolt Hex Hd 5/16-18 UNC x 3/4	90 124346X	Nut, Washer Head, Self-Thread 1/4
34 155071	Shaft, Foot Pedal	96 4497H	Retainer Spring 1" Ziinc/Cad
35 120183X	Bearing Nylon	112 19091210	Washer 9/32 x 3/4 x 10 Ga.
36 19211616	Washer 21/32 x 1 x 16 Gauge	113 127285X	Strap Torque L.H. Lt
37 1572H	Pin, Roll 3/16 x 1	116 72110610	Bolt, RdHd Sq Neck 3/8-16 x 1.25
38 131494	Idler, Flat	145 74490540	Bolt, Hex Flghd 5/16-18 Gr. 5
39 74760644	Bolt, Hex 3/8-16 x 2-3/4	150 165850	Bushing Bellcrank Grd Drive
40 4470J	Spacer	151 19133210	Washer 13/32 x 2 x 10 Ga.
41 165838	Keeper, Belt	156 166002	Washer Srrted 5/16ID x 1.125
42 19131312	Washer 13/32 x 13/16 x 12 Gauge	158 165589	Bracket Shift Mount
47 127783	Pulley, Idler	159 165494	Hub Tapered Flange Shift Lt
48 154407	Bellcrank Clutch Grnf Drv Stl	160 19292016	Washer 29/32 x 1-1/4 x 16 Ga
49 123205X	Retainer, Belt	161 72140406	Bolt Rdhd Sqnk 1/4-20 x 3/4 Gr 5
50 74760624	Bolt, Hex 3/8-16 x 1-1/2	162 73680400	Nut Crownlock 1/4-20 Unc
51 73680600	Nut, Crownlock 3/8-16	163 74780416	Bolt Hex Fin 1/4-20unc x 1 Gr 5
52 73680500	Nut, Crownlock 5/16-18	164 19091010	Washer 5/8 x .281 x 10 Ga
53 105710X	Link, Clutch	165 165623	Bracket Pivot Lever
55 105709X	Spring, Return, Clutch	166 166880	Screw 5/16-18 x 5/8
56 74760620	Bolt, Fin, Hex 3/8-16unc x 1-1/2	168 165492	Bolt Shoulder 5/16-18 x .561
57 130801	V-Belt, Drive	169 165581	Plate Fastening Lt
		171 17490608	Screw Thdrol 3/8-16 x x 1/2 Ty-Tt

NOTE: All component dimensions given in U.S. inches
1 inch = 25.4 mm

REPAIR PARTS

TRACTOR - - MODEL NUMBER RE12538C

STEERING WHEEL



REPAIR PARTS

TRACTOR - - MODEL NUMBER RE12538C

STEERING WHEEL

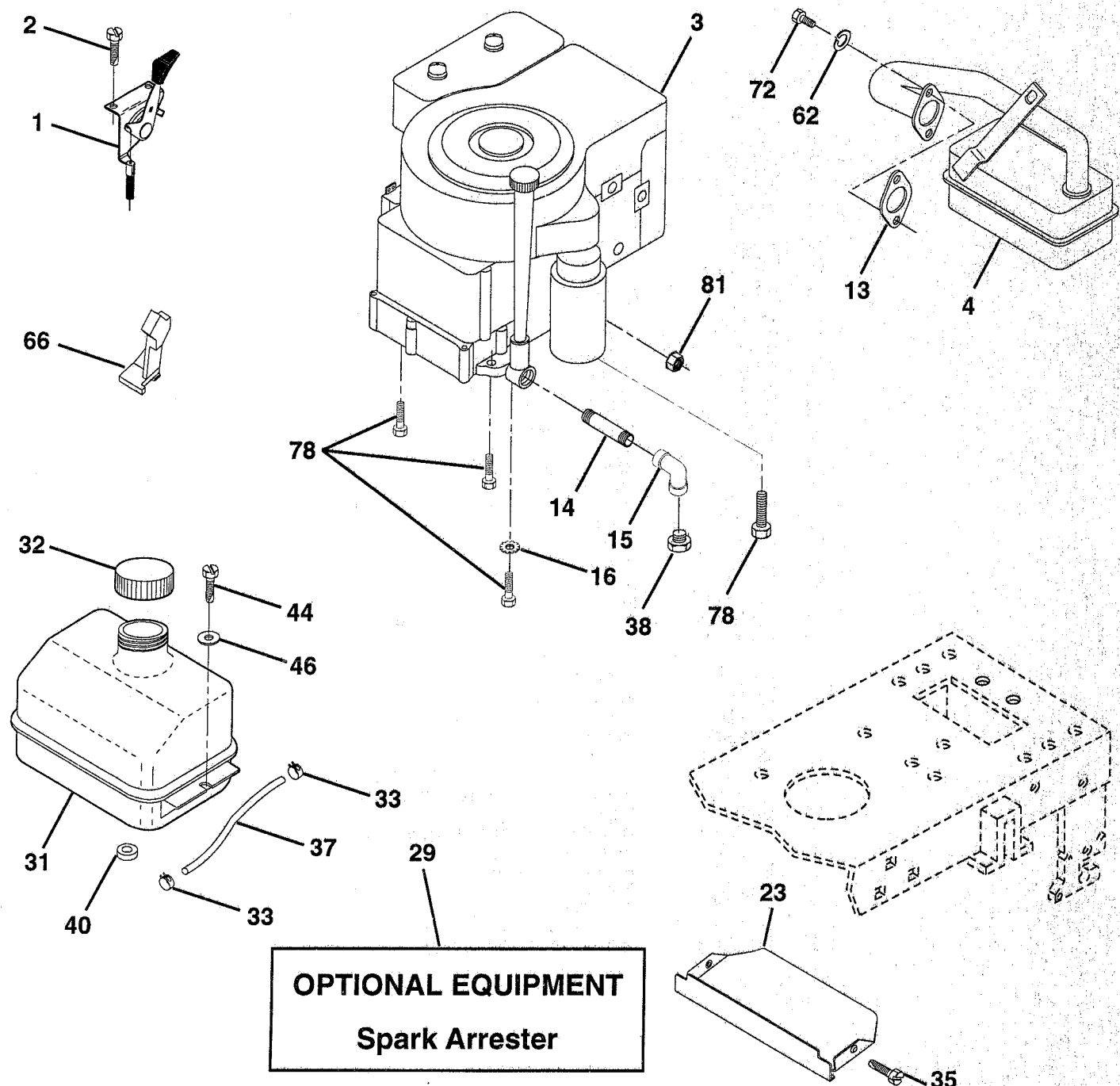
KEY NO.	PART NO.	DESCRIPTION
1	133741	Wheel, Steering
2	154427	Asm. Axle, Rear
3	156483	Asm., Spindle, Lh
4	157473	Asm., Spindle, Rh
5	6266H	Bearing, Thrust, Hardened
6	121748X	Washer 25/32 x 1-5/8 x 16 Ga.
7	19272016	Washer 27/32 x 1-1/4 x 16 Ga.
8	12000029	Ring, Clip
9	3366R	Bearing
10	156438	Link, Drag
11	10040600	Washer, Lock
13	154779	Bearing, Axle
15	73901000	Nut, Jam Hex w/Washer Insert 5/8-11 UNC
17	156546	Asm. Shaft, Steering
18	57079	Washer, Thrust .515 x .750 x .033
19	160395	Support, Shaft
22	165857	Screw, Hex Wsh Hd Torx
23	165851	Shatt Asm Pitman
25	154406	Bracket, Steering
26	126847X	Bushing, Link, Drag
27	136874	Gear, Sector
28	19131416	Washer 13/32 x 7/8 x 16 Ga.
29	17490612	Screw, Thdrol 3/8-16 x 3/4 Type TT
30	76020412	Pin, Cotter
32	130465	Rod, Tie
36	155099	Bushing, Steering
37	152927	Screw
38	133742	Insert, Steering
39	19133808	Washer 13/32 x 2-3/8 x 8 Ga.
40	7810H	Nut
41	100711L	Adapter, Steering
42	145054	Boot, Shaft Steering Blk
43	121749X	Washer 25/32 x 1-1/4 x 16 Ga.
44	153720	Extension Shaft Steering LR.LT
46	121232X	Cap, Spindle
47	6855M	Fitting, Grease
51	73800500	Nut Lock Hex w/Ins. 5/16-18 UNC
54	74780520	Bolt Fin Hex 5/16-18 UNC x 1-1/4
62	167902	Kit, Steering Asm, Service
63	74780616	Bolt, FinHex 3/8-16 UNC x 1 Gr. 5
65	154780	Spacer Axle
66	154404	Bearing Arm Pittman
67	74781044	Bolt, Fin Hex 5/8-11 UNC x 2-3/4
68	154429	Axle, Brace
79	19132012	Washer 13/32 x 1-1/4 x 12
80	74950612	Bolt Hex Nylon 3/8-16 x 3/4

NOTE: All component dimensions given in U.S. inches
1 inch = 25.4 mm

REPAIR PARTS

TRACTOR - - MODEL NUMBER RE12538C

ENGINE



REPAIR PARTS

TRACTOR - - MODEL NUMBER RE12538C

ENGINE

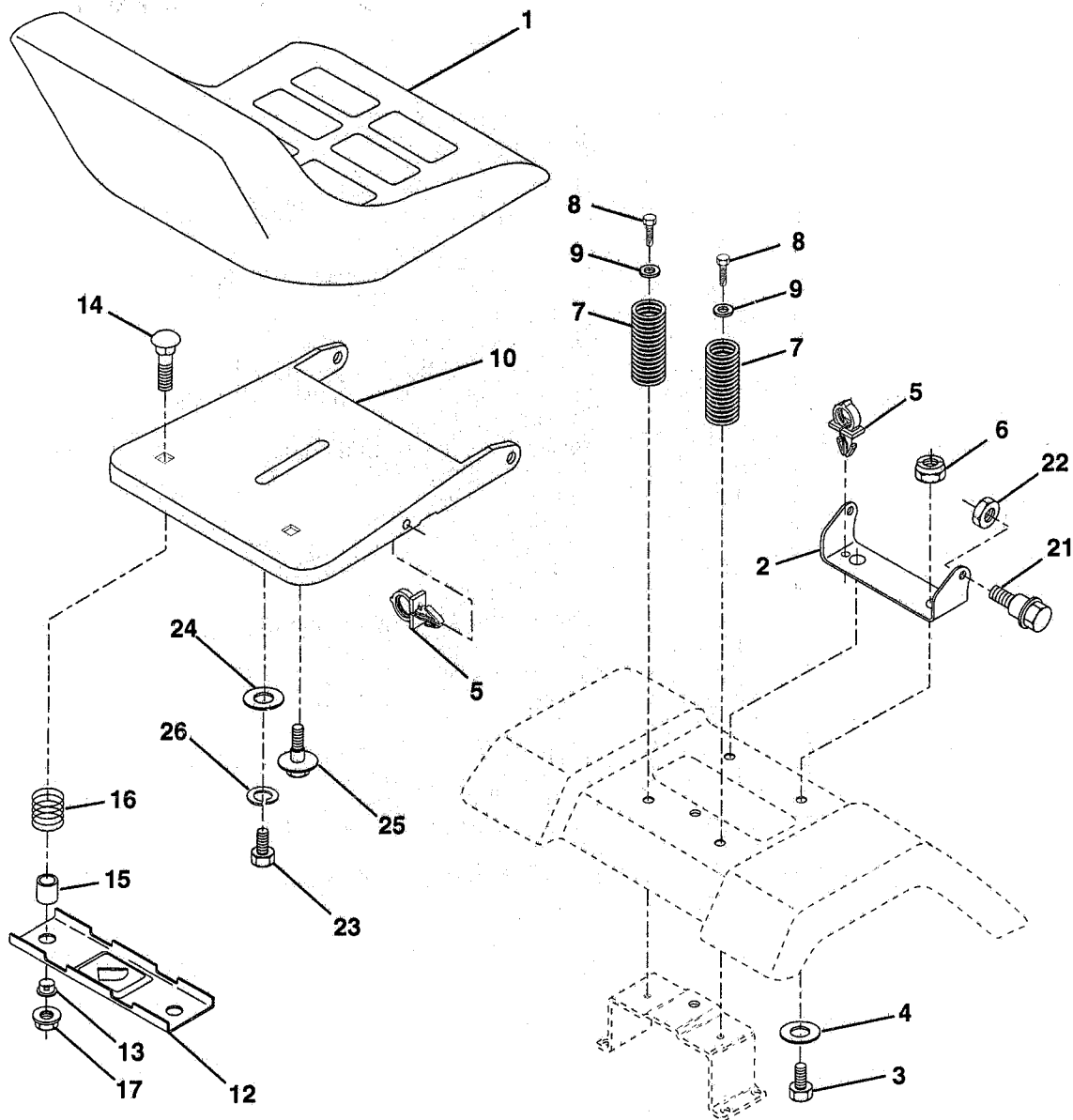
KEY NO.	PART NO.	DESCRIPTION
1	141359	Control Th/ch 20 22 LH Flg EEC
2	17720410	Screw Hex Thd Cut 1/4-20x5/8 T
3	-----	Engine, Briggs 289707 (Order Parts From Engine Manufacturer)
4	137348	Muffler Exhaust B&S
13	165291	Gasket Eng
14	13280324	Nipple Pipe 3/8 Npt X 3"
15	13200300	Elbow Std 90 Degree 3/8-18 Npt
16	11050600	Washer Lock Ext Tooth 3/8
23	159880	Shield Brn/Dbr Guard
29	137180	Kit Spark Arrestor (Flat Scrn)
31	109202X	Tank Fuel Front 2 00
32	140527	Cap Asm Fuel
33	123487X	Clamp Hose Blk
35	17490512	Screw Thdrol 5/16-18 x 3/4 TYT
37	137040	Line Fuel
38	-----	Plug Oil Drain (Order From Engine Manufacturer)
40	124028X	Bushing Snap Nyl Blk Fuel Line
44	17490412	Screw Hexwsh Thdrol 1/4-20x3/4
46	19091416	Washer 9/32 X 7/8 X 16 Ga
62	10040500	Washer 5/16
66	127951	Stop Throttle 3000 RPM
72	71070512	Screw 5/16-18 x 3/4
78	17490620	Screw Thdrol 3/8-16x1-1/4 TYTT
81	128861	Nut Flange 1/4-20 Starter Nut

NOTE: All component dimensions given in U.S. inches.
1 inch = 25.4 mm.

REPAIR PARTS

TRACTOR -- MODEL NUMBER RE12538C

SEAT



KEY NO.	PART NO.	DESCRIPTION
1	127426X	Seat
2	140551	Bracket, Pivot, Seat
3	74760616	Bolt
4	19131610	Washer 13/32 x 1 x 10 Ga.
5	145006	Clip, Push-in
6	73800600	Nut
7	124181X	Spring, Seat
8	17490616	Screw, Thdrol 3/8-16 x 1
9	19131614	Washer 13/32 x 1 x 14 Ga.
10	155925	Pan, Seat
12	121246X	Bracket, Mounting, Switch, Seat
13	121248X	Bushing, Nylon

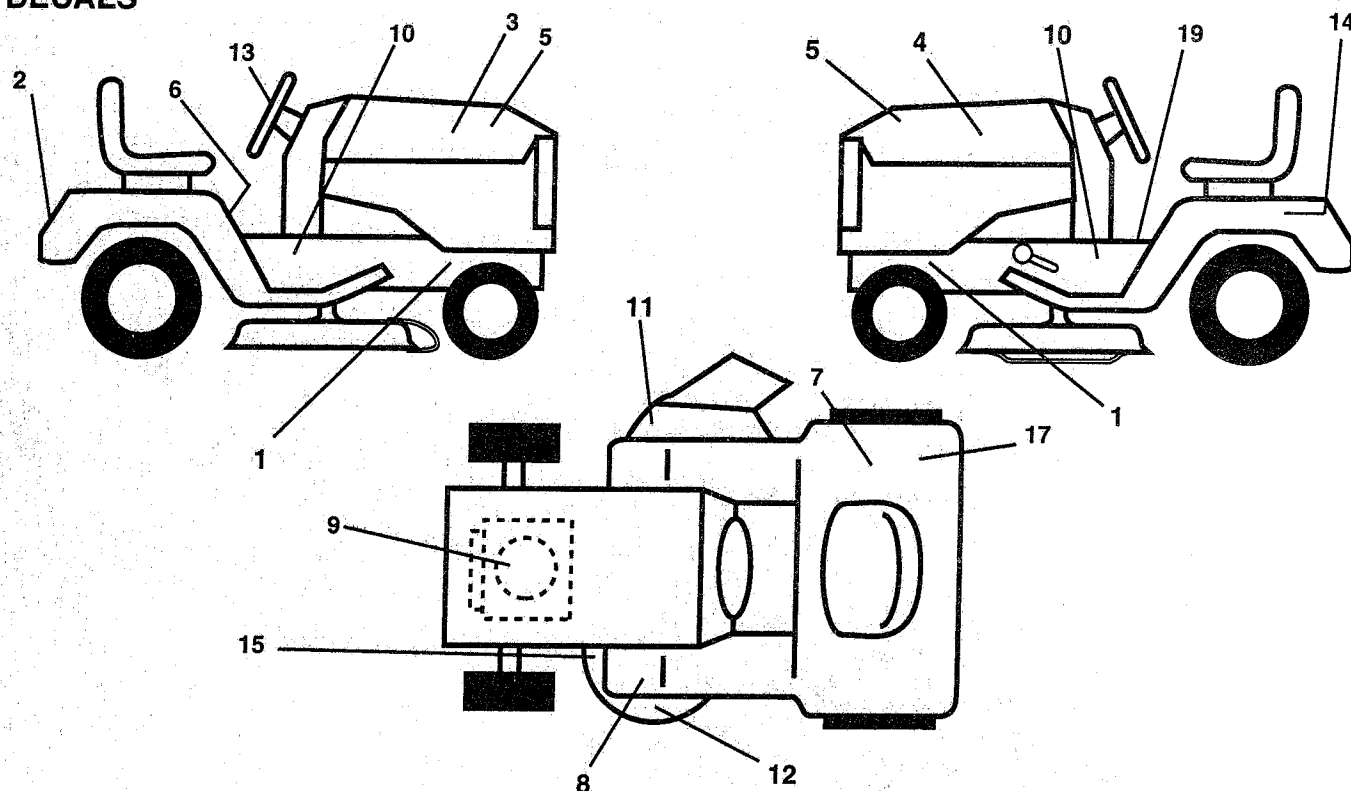
KEY NO.	PART NO.	DESCRIPTION
14	72050412	Nut, Crownlock 1/4-20 x 1-1/2
15	134300	Spacer, Split
16	121250X	Spring
17	123976X	Nut, Lock, Flange 1/4 Gr. 5
21	153236	Bolt, Shoulder 5/16-18 UNC
22	73800500	Nut
23	74780814	Bolt Fin Hex 1/2 - 13 x 7/8 Gr. 5
24	19171912	Washer 17/32 x 1-3/16 x 12 Ga.
25	127018X	Bolt Shoulder 5/16-18 x .62
26	10040800	Washer Lock Hvy Hclc Spr 1/2

NOTE: All component dimensions given in U.S. inches
1 inch = 25.4 mm

REPAIR PARTS

TRACTOR -- MODEL NUMBER RE12538C

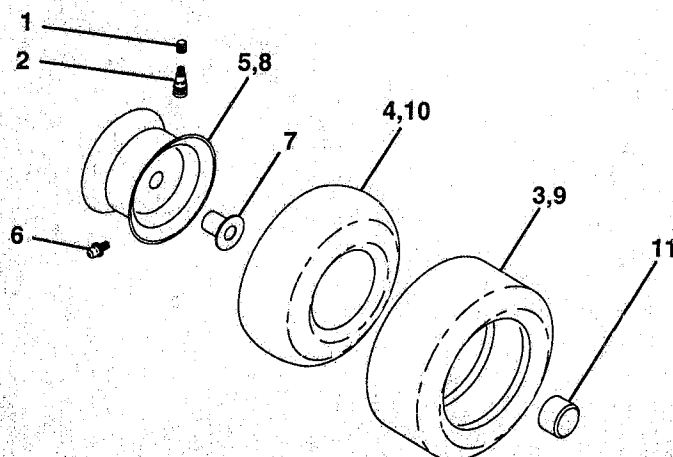
DECALS



KEY NO.	PART NO.	DESCRIPTION
1	159736	Decal, Chassis Hot Muffler
2	132628	Decal, Fender Logo
3	153266	Decal, Hood Rh
4	153267	Decal, Hood Lh
5	152786	Decal, Insert Hood
6	145498	Decal, Read Owner's Manual Syms
7	145437	Decal, Europe Stand CE
8	159737	Decal, Brake/Clutch Symbol LT
9	165317	Decal, HP Engine
10	127900	Decal, Chassis
11	145494	Decal, Mower Cutfnger Symbol

KEY NO.	PART NO.	DESCRIPTION
12	135013	Decal, Deck Enviro
13	127075	Decal Wheel Steering
14	145005	Decal, Battery Dan/Poi P/L Symbols
15	136822	Decal, V-Belt
17	126187X	Decal, 100 DBA
19	140837	Decal, Parking Brake
--	138311	Decal, Handle, Lift, Height Adjust (Lift Handle)
--	162598	Decal, Drawbar Load Limit
--	168304	Manual, Operator's (European)
--	168305	Manual, Operator's (Scan)
--	168306	Manual, Repair Parts

TIRES AND WHEELS



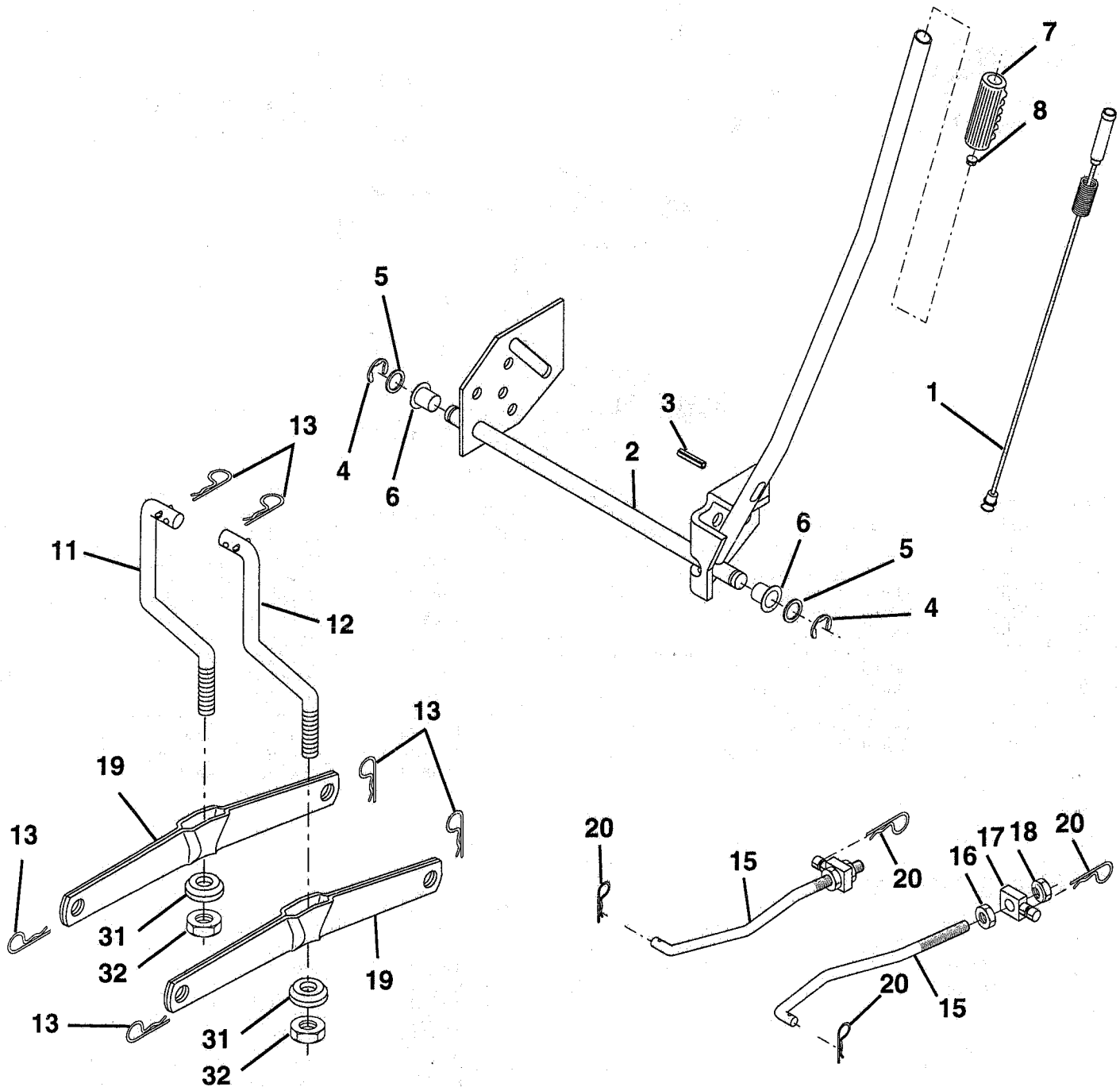
KEY NO.	PART NO.	DESCRIPTION
1	59192	Cap, Valve
2	65139	Stem, Valve
3	106222X	Tire Front
4	59904	Tube, Front (not furnished)
5	106732X427	Rim, Asm. Front
6	278H	Grease Fitting (rear tire only)
7	9040H	Bearing, Flange (front tire only)
8	106108X427	Rim, Asm. Rear
9	124635X	Tire, Rear
10	7152J	Tube, Rear (not furnished)
11	104757X	Cap, Axle
--	144334	Sealant, Tire (10 oz. Tube)

NOTE: All component dimensions given in U.S. inches
1 inch = 25.4 mm

REPAIR PARTS

TRACTOR - - MODEL NUMBER RE12538C

MOWER LIFT



REPAIR PARTS

TRACTOR - - MODEL NUMBER RE12538C

MOWER LIFT

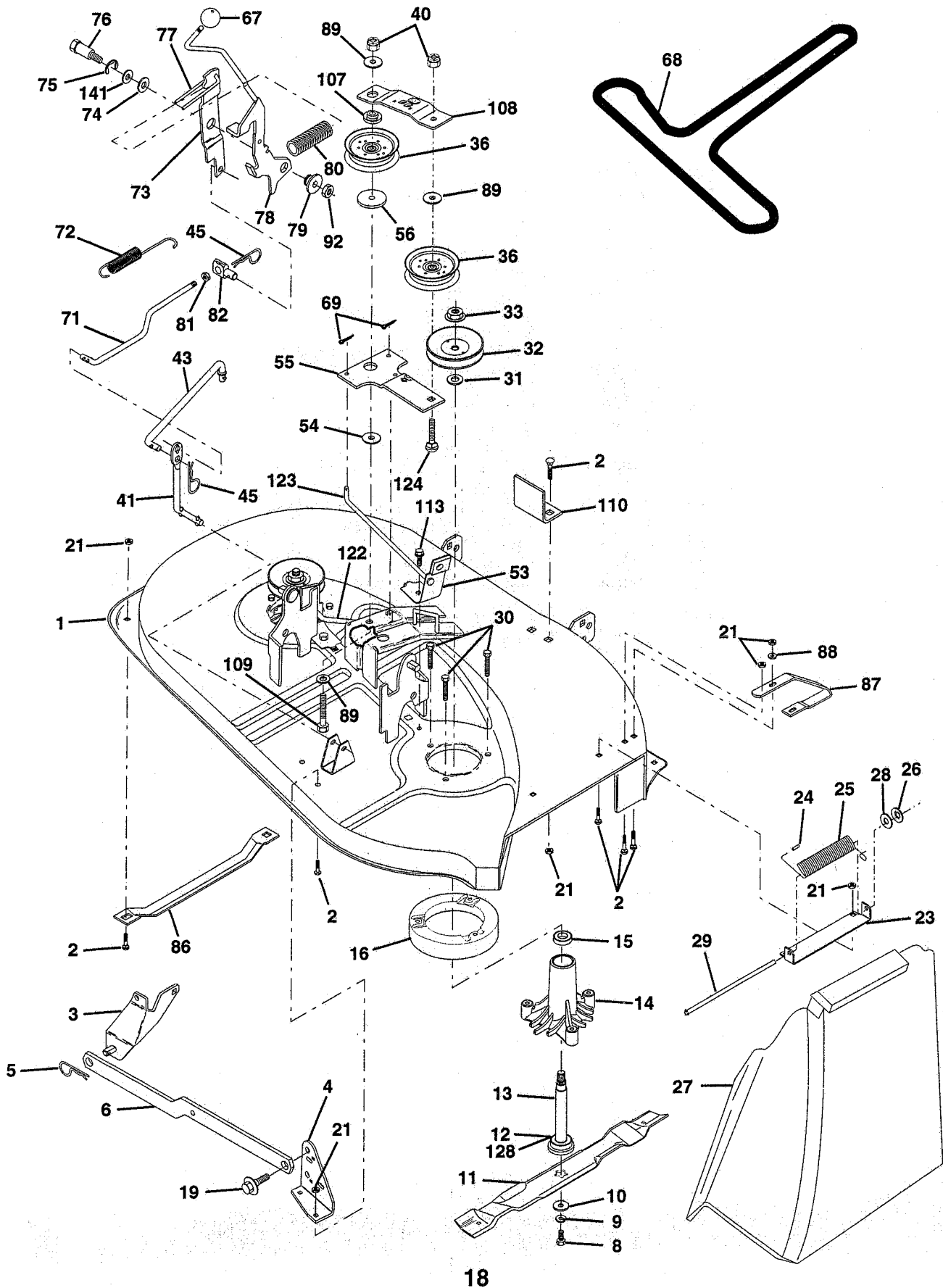
KEY NO.	PART NO.	DESCRIPTION
1	159460	Asm. Inner Wire w/Plunger
2	159471	Asm., Shaft, Lift
3	105767X	Pin, Groove
4	12000002	Ring, E #5133-62
5	19211621	Washer 21/32 x 1 x 21 Ga.
6	120183X	Bearing, Nylon
7	109413X	Grip Handle Bicycle Matte Blk
8	124526X	Button, Plunger
11	139865	Link, Lift, Lh
12	139866	Link, Lift, Rh
13	4939M	Spring, Retainer
15	127218	Link, Front
16	73350800	Nut, Jam, Hex 1/2-13 Unc
17	130171	Trunnion
18	73800800	Nut, Lock w/washer 1/2-13 Unc
19	139868	Arm, Suspension, Rear
20	163552	Spring, Retainer
31	140302	Bearing, Pvt Lft
32	73540600	Nut Crownlock 3/8-24

NOTE: All component dimensions given in U.S. inches
1 inch = 25.4 mm

REPAIR PARTS

TRACTOR - - MODEL NUMBER RE12538C

MOWER DECK



REPAIR PARTS

TRACTOR - - MODEL NUMBER RE12538C

MOWER DECK

KEY NO.	PART NO.	DESCRIPTION	KEY NO.	PART NO.	DESCRIPTION
1	142829	Mower Housing Assembly	56	122052X	Spacer, Retainer
2	72140506	Bolt	67	162132	Knob
3	138017	Asm., Bar, Anti-Sway	68	144200	V-Belt, Mower
4	138440	Asm., Bracket, Anti-Sway Bar	69	76020312	Pin, Cotter 3/32 x 3/4
5	4939M	Spring, Retainer	71	142427	Rod Primary Clutch 38 & 42"
6	130832	Arm, Suspension, Rear	72	131870	Spring Return
8	850857	Bolt 3/8-24 x 1.25 Gr. 8	73	127847	Arm Clutch Secondary
9	10030600	Washer, Lock	74	121748X	Washer 25/32 x 1-5/8 x 16 Ga.
10	140296	Washer, Hardened	75	12000029	Ring Klip #T5304-75
11	138497	Blade, Mower, Hi Lift	76	128903	Bolt Shoulder 3/8 - 16 UNC 1.44
12	129895	Bearing, Ball	77	127845	Keeper Spring 4.000
13	137645	Asm., Shaft, Mandrel, Vented (Includes key no. 12)	78	160570	Lever Asm. Clutch Primary Lt
14	128774	Housing, Mandrel, Vented	79	127498	Bushing .747 OD x 794 Lg
15	110485X	Bearing, Ball, Mandrel	80	153701	Spring Clutch Mower
16	140329	Stripper, Mower	81	73350600	Nut Hex Jam 3/8 - 16 UNC
19	132827	Bolt, Shoulder	82	142028	Trunnion Adj '94
21	73680500	Nut, Crownlock 5/16 - 18 UNC	86	7631J	Runner, LH
23	137607	Bracket, Deflector	87	128772	Runner, RH
24	105304X	Cap, Sleeve	88	19111216	Washer 11/32 x 3/4 x 16 Ga.
25	123713X	Spring, Torsion, Deflector	89	19131612	Washer 13/32 x 1 x 12 Ga.
26	110452X	Washer, Lock	92	73800600	Nut Lock Hex w/Ins 3/8-16 UNC
27	106736X	Deflector, Shield	107	133502	Spacer, Retainer
28	19111016	Washer 11/32 x 5/8 x 16 Ga.	108	133503	Stiffener, Idler Arm
29	106735X	Rod, Hinge	109	74760640	Bolt, hex Head 3/8-16 x 2-1/2
30	157722	Screw Hex Thdrol	110	142587	Upstop Deck Front 38"
31	129963	Washer, Spacer	113	17490512	Screw, Hex Head, Thd., Roll 5/16-18 x 3/4
32	153532	Pulley, Mandrel	122	131289	Rod, Brake, RH
33	137266	Nut Lock 9/16	123	131288	Rod, Brake, LH
36	131494	Pulley, Idler, Flat	124	72110614	Bolt, Carriage 3/8-16 x 1-3/4
40	73680600	Nut, Crownlock 3/8 - 16 UNC	128	153390	Washer Felt
41	133551	Rod Pivot w/Nibs	141	6266H	Washer, Thrust .75 x 1.230
43	133504	Rod Clutch Secondary	--	130794	Asm. Mandrel (includes key nos. 8-10, 12-15, 31 and 33)
45	4497H	Retainer Spring 1: Zinc/Cad	--	145758	Mower Deck, Complete
53	130840	Brake Assembly			
54	133943	Washer, Hardened			
55	133840	Arm, Idler Assembly			

NOTE: All component dimensions given in U.S. inches
1 inch = 25.4 mm