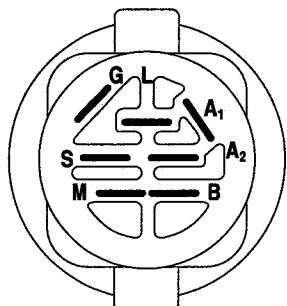
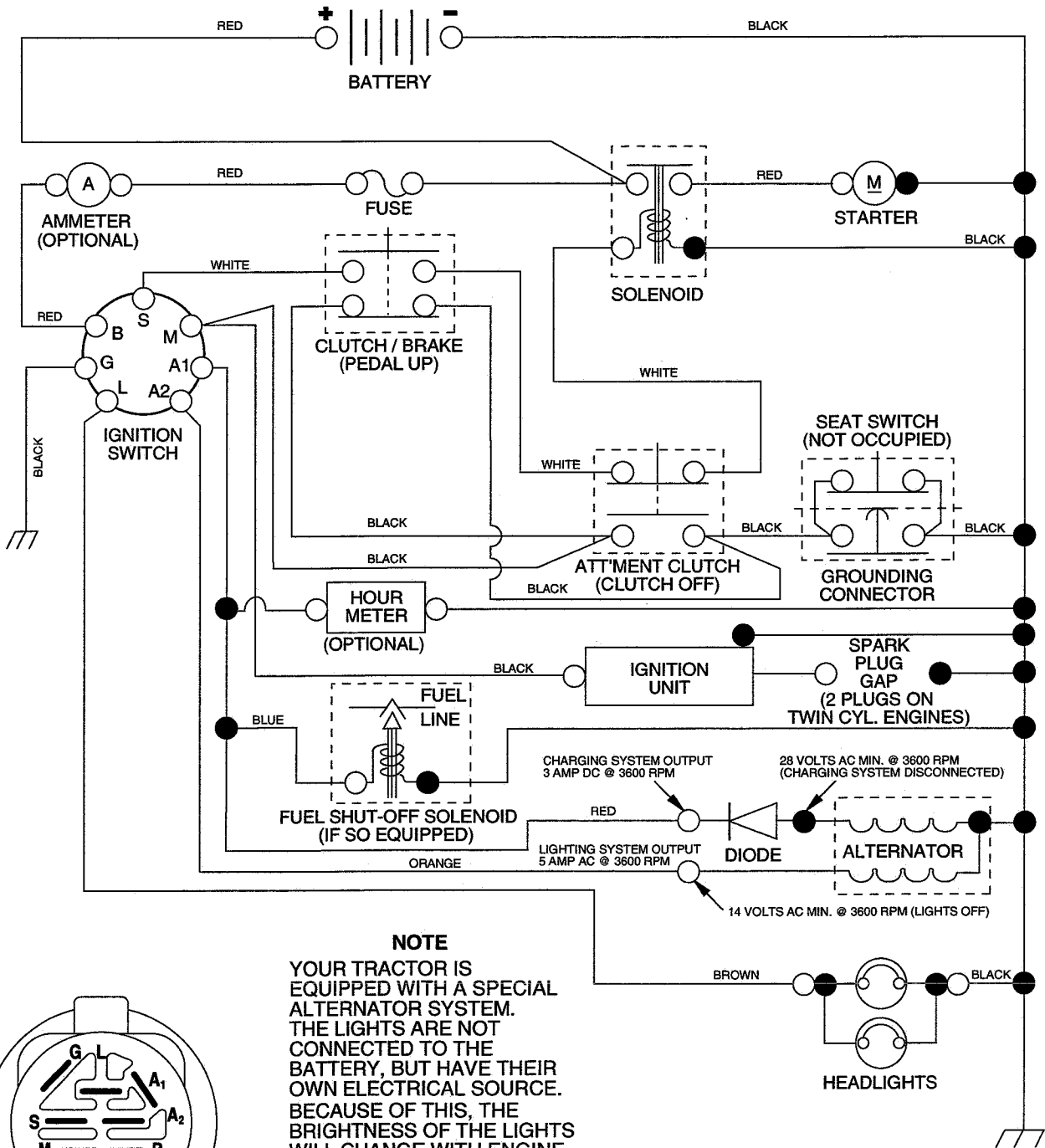


# TRACTOR - MODEL NO. RZ145H42D PRODUCT NO. 954 56 76-97

## SCHEMATIC



IGNITION SWITCH

POSITION	CIRCUIT	"MAKE"
OFF	M+G+A1	NONE
RUN/LIGHT	B+A1	A2+L
RUN	B+A1	NONE
START	B+S+A1	NONE

**NOTE**  
YOUR TRACTOR IS EQUIPPED WITH A SPECIAL ALTERNATOR SYSTEM. THE LIGHTS ARE NOT CONNECTED TO THE BATTERY, BUT HAVE THEIR OWN ELECTRICAL SOURCE. BECAUSE OF THIS, THE BRIGHTNESS OF THE LIGHTS WILL CHANGE WITH ENGINE SPEED. AT IDLE THE LIGHTS WILL DIM. AS THE ENGINE IS SPEEDED UP, THE LIGHTS WILL BECOME THEIR BRIGHTEST.

### WIRING INSULATED CLIPS

**NOTE:** IF WIRING INSULATED CLIPS WERE REMOVED FOR SERVICING OF UNIT, THEY SHOULD BE REPLACED TO PROPERLY SECURE YOUR WIRING.

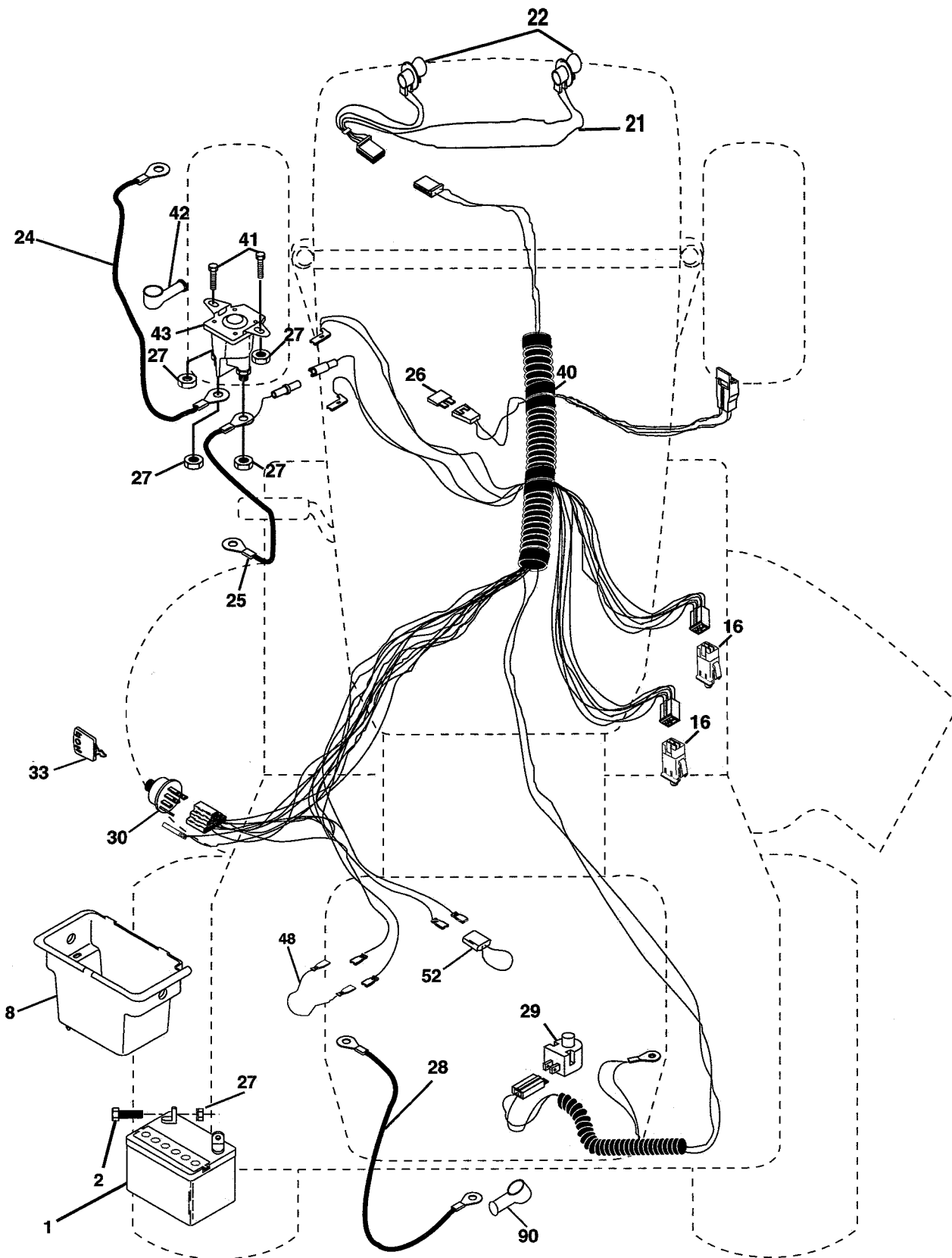
NON-REMOVABLE CONNECTIONS

REMOVABLE CONNECTIONS

## REPAIR PARTS

**TRACTOR - MODEL NO. RZ145H42D PRODUCT NO. 954 56 76-97**

## ELECTRICAL



# REPAIR PARTS

TRACTOR - MODEL NO. RZ145H42D PRODUCT NO. 954 56 76-97

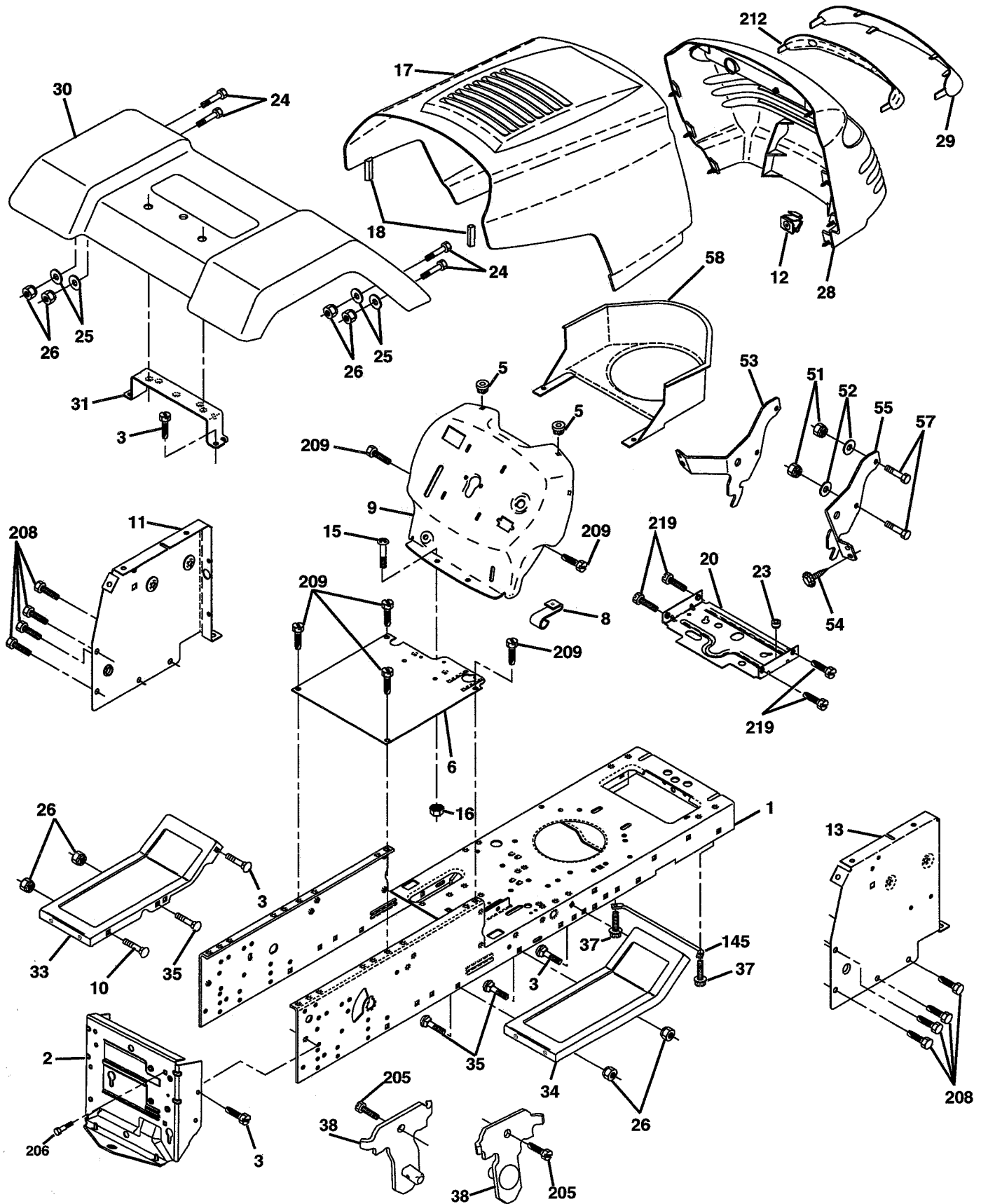
## ELECTRICAL

KEY NO.	PART NO.	DESCRIPTION
1	532 16 34-65	Battery 12 Volt 28 AMP
2	874 76 04-12	Bolt Hex Hd 1/4-20unc X 3/4
8	532 17 66-89	Battery Box
16	532 17 61-38	Switch Interlock Push-In
21	532 17 56-85	Harness Asm Light W/4152j
22	532 00 41-52	Bulb Light #1156
24	532 12 47-80	Cable Battery 6 Ga 11" red
25	532 14 61-47	Cable Battery 6 Ga 44" red w/16 wire
26	532 17 51-58	Fuse 20 AMP
27	873 51 04-00	Nut Keps Hex 1/4-20 UNC
28	532 12 47-73	Cable Ground 6 Ga 12" black
29	532 12 13-05	Switch Plunger Nc Gray
30	532 17 55-66	Switch Ign
33	532 14 04-01	Key Ign Molded Generic
40	532 17 97-20	Harness Ign.
41	871 11 04-08	Bolt Blk Fin Hex 1/4 - 20 x 1/2
42	532 13 15-63	Cover Terminal Red
43	532 17 88-61	Solenoid
48	532 14 08-44	Adapter Ammeter Rectangular
52	532 14 19-40	Protection Wire Loop
90	532 18 04-49	Cover Terminal Battery

**NOTE:** All component dimensions given in U.S. inches.  
1 inch = 25.4 mm.

# REPAIR PARTS

TRACTOR - MODEL NO. RZ145H42D PRODUCT NO. 954 56 76-97  
CHASSIS AND ENCLOSURES



# REPAIR PARTS

## TRACTOR - MODEL NO. RZ145H42D PRODUCT NO. 954 56 76-97 CHASSIS AND ENCLOSURES

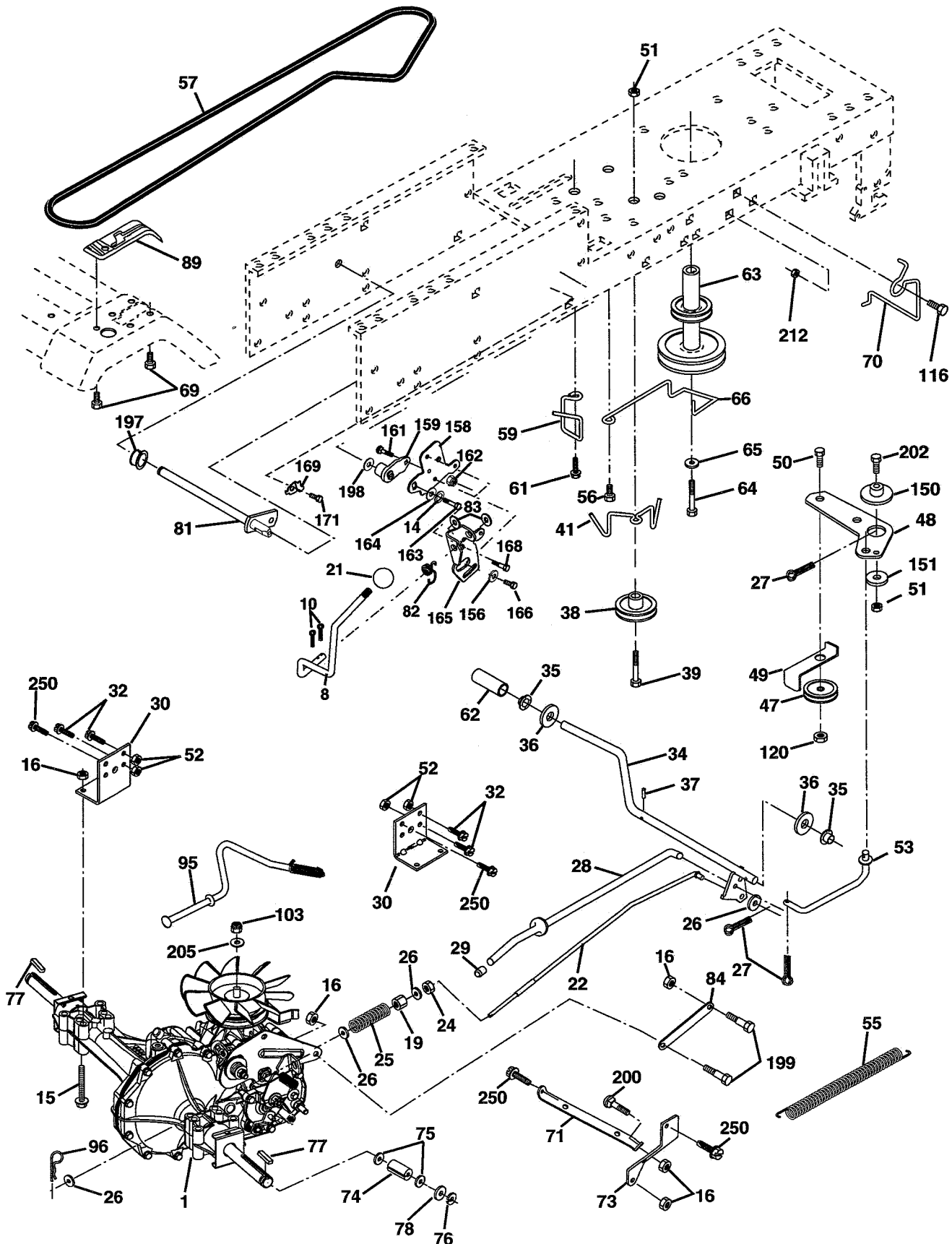
KEY NO.	PART NO.	DESCRIPTION
1	532 17 46-20	Chassis Stamping
2	532 17 65-54	Drawbar
3	817 06 06-12	Screw 3/8-16x3/4
5	532 15 52-72	Bumper Hood/Dash
6	532 15 59-23	Saddle
8	532 15 51-38	Clip Retainer
9	532 17 22-43	Dash P/L M
10	872 14 06-08	Bolt Carriage 3/8-16 x 1
11	532 17 49-96	Panel Dash Lh
12	532 14 56-60	Clip Tinnerman Grille
13	532 18 17-19	Panel Dash Rh
15	874 18 05-12	Screw Mach Thdr 5/16-18 Unc x 3/4
16	873 51 05-00	Nut Keps 5/16-18 Unc
17	532 16 35-57	Hood
18	532 12 69-38	Bumper Hood
20	532 18 06-79	Plate Mtg. Battery/Tank Fuel Fr.
23	532 12 40-28	Bushing Snap
24	874 78 06-16	Bolt Fin Hex 3/8-16 Unc x 1 Gr. 5
25	819 13 13-12	Washer 13/32 X 13/16 X 12 Ga
26	873 80 06-00	Nut Lock Hex W/Ins 3/8-16 Unc
28	532 17 91-01	Grille/Lens Asm.
29	532 16 81-54	Lens
30	532 17 45-11	Fender
31	532 13 66-19	Bracket Fender
33	532 18 11-93	Footrest LH
34	532 18 11-94	Footrest RH
35	872 11 06-06	Bolt Rdhd Sqnk 3/8-16 x 3/4
37	817 49 05-08	Screw Thdrol 5/16-18 x 1/2 TYT
38	532 17 57-10	Bracket Asm Pivot Mower Rear
51	873 80 04-00	Nut Lock w/Insert 1/4-20 Unc
52	819 09 14-16	Washer 9/32 x 7/8 x 16 Ga.
53	532 14 46-97	Bracket Grille LH
54	532 16 14-64	Screw Hex Wshd 8-18 x 7/8
55	532 14 46-96	Bracket Grille RH
57	874 78 04-12	Bolt Hex 1/4-20 x 3/4
58	532 15 01-27	Air Duct Engine P/L
145	532 15 65-24	Rod Pivot Chassis/Hood
205	817 49 06-08	Screw Thdrol 3/8-16 x 1/2
206	532 17 01-65	Bolt Shoulder 5/16-18 TT
208	817 67 06-08	Screw Thdrol 3/8-16 x 1/2 TYT BI
209	817 00 06-12	Screw Hexwsh Thdr 3/8-16 x 3/4
212	532 15 62-29	Insert Lens Reflect
219	817 00 05-12	Screw 5/16-18 x 3/4
--	532 00 54-79	Plug Button

**NOTE:** All component dimensions given in U.S. inches  
1 inch = 25.4 mm

# REPAIR PARTS

TRACTOR - MODEL NO. RZ145H42D PRODUCT NO. 954 56 76-97

## DRIVE



# REPAIR PARTS

TRACTOR - MODEL NO. RZ145H42D PRODUCT NO. 954 56 76-97

## DRIVE

KEY NO.	PART NO.	DESCRIPTION
1	-----	Transaxle Hydro Gr 322-0510 (Order parts from transaxle manufacturer)
8	532 1656-19	Rod Shift Fender
10	876 0204-16	Pin Cotter 1/8 x 1 CAD
14	810 0404-00	Washer Lock Hvy Helical 1/4
15	874 4905-44	Bolt Hex Flg Hd 5/16-18 X Gr.5
16	873 8005-00	Nut Lock Hex W/Ins. 5/16-18 Unc P
19	873 8006-00	Nut Lock Hex W/Wsh 3/8-16 Unc
21	532 1069-33	Knob
22	532 1694-98	Rod, Brake Hydro
24	873 3506-00	Nut
25	532 1068-88	Spring, Brake Rod
26	819 1313-16	Washer
27	876 0204-12	Pin Cotter 1/8 x 3/4 CAD.
28	532 1757-65	Rod, Parking Brake
29	532 0716-73	Cap, Parking Brake
30	532 1749-73	Bracket, Transaxle
32	874 7605-12	Bolt Hex Hd 5/16-18 Unc x 3/4
34	532 1755-78	Shaft, Foot Pedal
35	532 1201-83	Bearing, Nylon
36	819 2116-16	Washer
37	532 1249-63	Pin, Roll
38	532 1791-14	Pulley, Idler, Composite
39	874 7606-48	Bolt Fin Hex 3/8-16 Unc x 2-3/4
41	532 1755-56	Keeper, Belt Idler
47	532 1277-83	Pulley, Idler, V-Groove
48	532 1544-07	Bellcrank Clutch Grnd Drv Stl
49	532 1232-05	Retainer, Belt
50	874 7606-24	Bolt Hex 3/8-16 Unc x 1-1/2
51	873 6806-00	Nut Crownlock 3/8-16
52	873 6805-00	Nut Crownlock 5/16-18
53	532 1057-10	Link, Clutch
55	532 1057-09	Spring, Return, Clutch
56	874 7606-20	Bolt Fin Hex 3/8-16 UNC x 1-1/4
57	532 1402-94	V-Belt, Ground Drive
59	532 1696-91	Keeper, Center Span
61	817 1206-14	Screw 3/8-16 x .875
62	532 1248-72	Cover, Pedal
63	532 1802-19	Pulley, Eng
64	871 1707-64	Bolt Hex 7/16-20 x 4 Ga. 5
65	810 0407-00	Washer
66	532 1547-78	Keeper Belt Engine

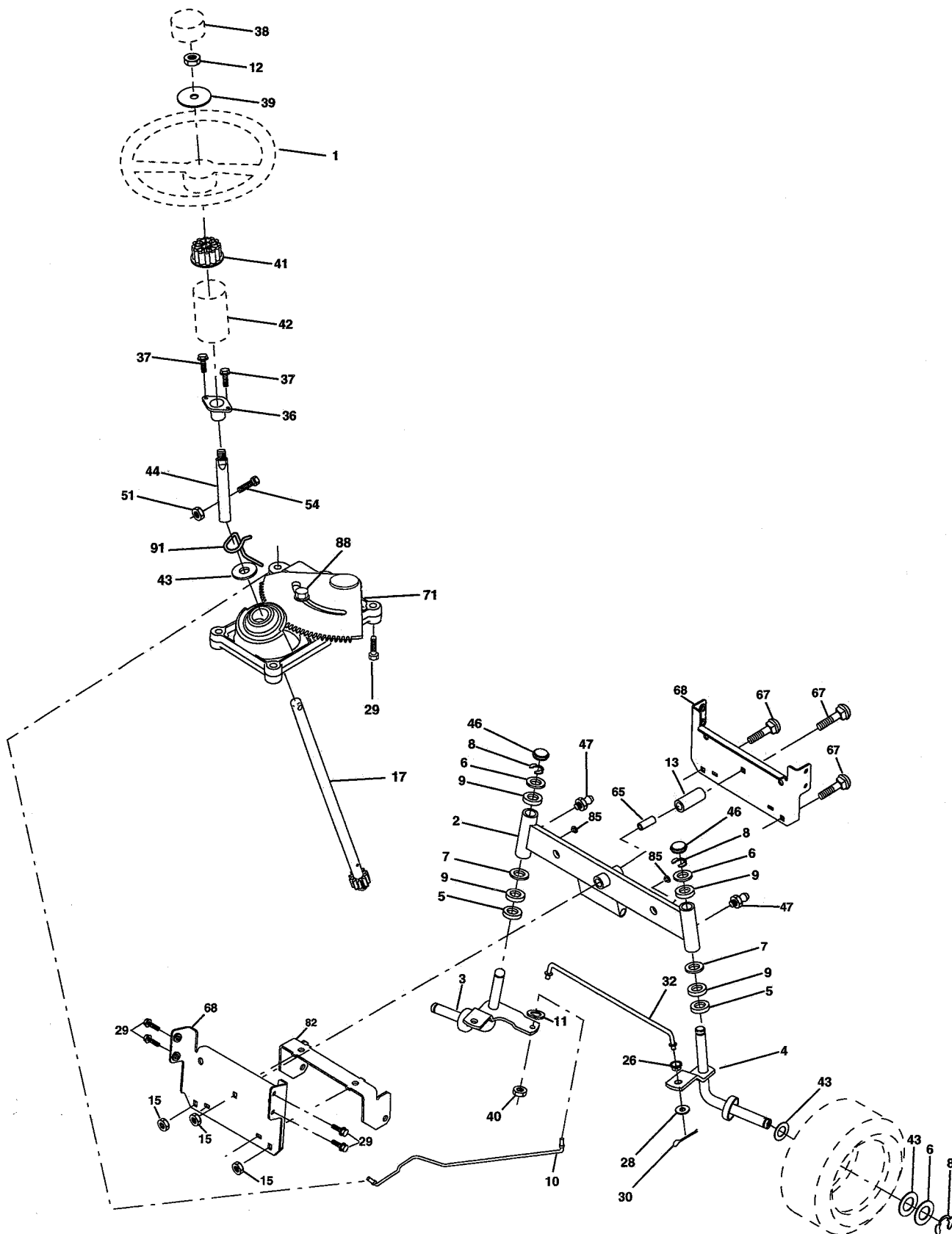
KEY NO.	PART NO.	DESCRIPTION
69	532 1424-32	Screw Hex Wsh 1/4-1/2 Unc
70	532 1802-18	Guide Belt Mower Drive RH
71	532 1691-83	Strap Torque Lh Hydro
73	532 1691-82	Strap Torque Rh Hydro
74	532 1370-57	Spacer, Axle
75	532 1217-49	Washer 25/32 x 1-1/4 x 16 Gauge
76	812 0000-01	E-Ring
77	532 1235-83	Key, Square
78	532 1217-48	Washer 25/32 x 1-5/8 x 16 Gauge
81	532 1655-96	Shaft Asm. Cross Hydro
82	532 1237-82	Spring Torsion T/A
83	819 1712-16	Washer 17/32 x 3/4 x 16 Ga.
84	532 1698-43	Link Transaxle
89	532 1730-29	Console, Shift
95	532 1702-01	Control Asm Bypass Hydro
96	532 1247-88	Retainer Spring 1" Zinc/Cad
103	873 9408-00	Nut Hex Jam Toplock 1/2-20 Unf
116	872 1406-08	Bolt 3/8-16 Unc x 1
120	873 9006-00	Nut Lock 3/8-16 Unc
150	532 1754-56	Spacer Retainer
151	819 1332-10	Washer 13/32 x 2 x 10 Ga.
156	532 1660-02	Washer Srrtd 5/16 ID x 1.0 x .125 Tk
158	532 1655-89	Bracket Shift Mount
159	532 1654-94	Hub Tapered Flange Shift LT
161	872 1404-06	Bolt Rdhd Sqnk 1/4-20 x 3/4 Gr. 5
162	873 6804-00	Nut Crownlock 1/4-20 Unc
163	874 7804-16	Bolt Hex Fin 1/4-20 unc x 1 Gr. 5
164	819 0910-10	Washer 5/8 x .281 x 10 Ga
165	532 1656-23	Bracket Pivot Lever
166	532 1668-80	Screw 5/16-18 x 5/8 TT Yellow
168	532 1654-92	Bolt Shoulder 5/16-18 x .561 TT
169	532 1655-81	Plate Fastening
171	817 4906-08	Screw Thdrl 3/8-16 x 1/2
197	532 1696-13	Nyliner Snap-In 5/8" ID
198	532 1695-93	Washer Nyl 7/8 ID x .105 HYD CRD
199	532 1696-12	Bolt Shoulder 5/16-18 Unc
200	872 1405-08	Bolt Rdhd Sqnk 5/16-18 Unc x 1
202	872 1106-14	Bolt Carr Sh 3/8-16 x 1-3/4 Gr. 5
205	819 1716-16	Washer 17/32 x 1 x 16 Ga.
212	532 1452-12	Nut Hexflange Lock
250	817 0606-12	Screw 3/8-16 x .75

**NOTE:** All component dimensions given in U.S. inches  
1 inch = 25.4 mm

# REPAIR PARTS

TRACTOR - MODEL NO. RZ145H42D PRODUCT NO. 954 56 76-97

## STEERING ASSEMBLY





# REPAIR PARTS

TRACTOR - MODEL NO. RZ145H42D PRODUCT NO. 954 56 76-97

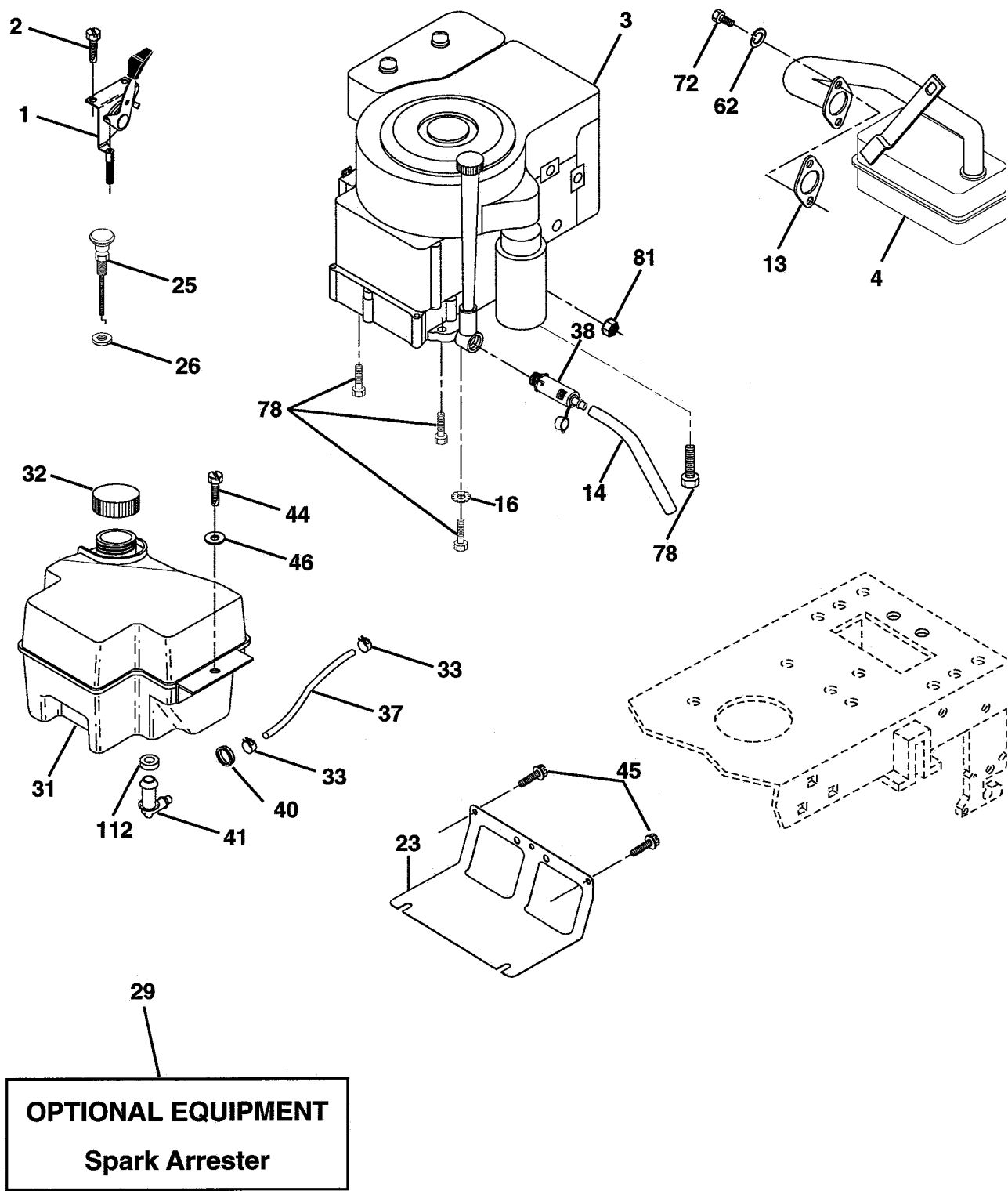
## STEERING ASSEMBLY

KEY NO.	PART NO.	DESCRIPTION
1	532 17 59-04	Wheel Steering
2	532 17 51-31	Axle Asm
3	532 16 98-40	Spindle Asm LH
4	532 16 98-39	Spindle Asm RH
5	532 12 49-31	Bearing Race Thrust Harden
6	532 12 17-48	Washer 25/32 X 1-5/8 X 16 Ga
7	819 27 20-16	Washer 27/32 X 1-1/4 X 16 Ga
8	812 00 00-29	Ring Klip #t5304-75
9	532 12 49-37	Bearing Col Strg Blk
10	532 17 51-21	Link Drag
11	810 04 06-00	Washer Lock Hvy Hlcl Spr 3/8
12	<b>873 94 08-00</b>	Nut Hex Jam Toplock 1/2-20 UNF
13	532 13 65-18	Spacer Brg Axle Front
15	532 14 52-12	Nut Hex Flange Lock
17	<b>532 18 06-41</b>	Shaft Asm Strg
26	532 12 68-47	Bushing Link Drag Blk LR
28	819 13 14-16	Washer 13/32 X 7/8 X 16 Ga
29	817 06 06-12	Screw 3/8-16x3/4
30	876 02 04-12	Pin Cotter 1/8 X 3/4 Cad
32	532 13 04-65	Rod Tie Wire Form 19 75 Mech
36	532 15 50-99	Bushing Strg
37	532 15 29-27	Screw
38	532 17 59-05	Cap Strg Wh
39	<b>819 18 38-12</b>	Washer 9/16 x 2-3/8 12 Ga.
40	532 12 47-01	Lock nut
41	532 10 07-11	Adaptor Wheel Strg
42	532 16 96-33	Boot Steering Shaft
43	532 12 17-49	Washer 25/32 X 1-1/4 X 16 Ga
44	532 15 37-20	Extension Steering Shaft LR/LT
46	532 12 12-32	Cap Spindle Fr Top Blk
47	532 12 48-36	Fitting Grease
51	<b>873 54 04-00</b>	Nut Crownlock 1/4-28
54	<b>871 13 04-20</b>	Bolt Hex 1/4-28 UNF x 1-1/4 Gr. 8
63	874 78 06-16	Bolt Fin Hex 3/8-16unc x 1 Gr. 5
65	532 16 03-67	Spacer Brace Axle
67	872 14 06-18	Bolt, Rdhd Sqnk 3/8-16 x 2-1/4
68	532 16 98-27	Axle, Brace
71	532 17 51-46	Steering Asm.
82	532 16 98-35	Bracket Susp Chassis Front
85	532 13 38-35	Fastener Christmas Tree
88	532 17 51-18	Bolt Shoulder 7/16-20
91	532 17 55-53	Clip Steering

**NOTE:** All component dimensions given in U.S. inches.  
1 inch = 25.4 mm.

**REPAIR PARTS**

**TRACTOR - MODEL NO. RZ145H42D PRODUCT NO. 954 56 76-97**  
**ENGINE**



# REPAIR PARTS

TRACTOR - MODEL NO. RZ145H42D PRODUCT NO. 954 56 76-97

## ENGINE

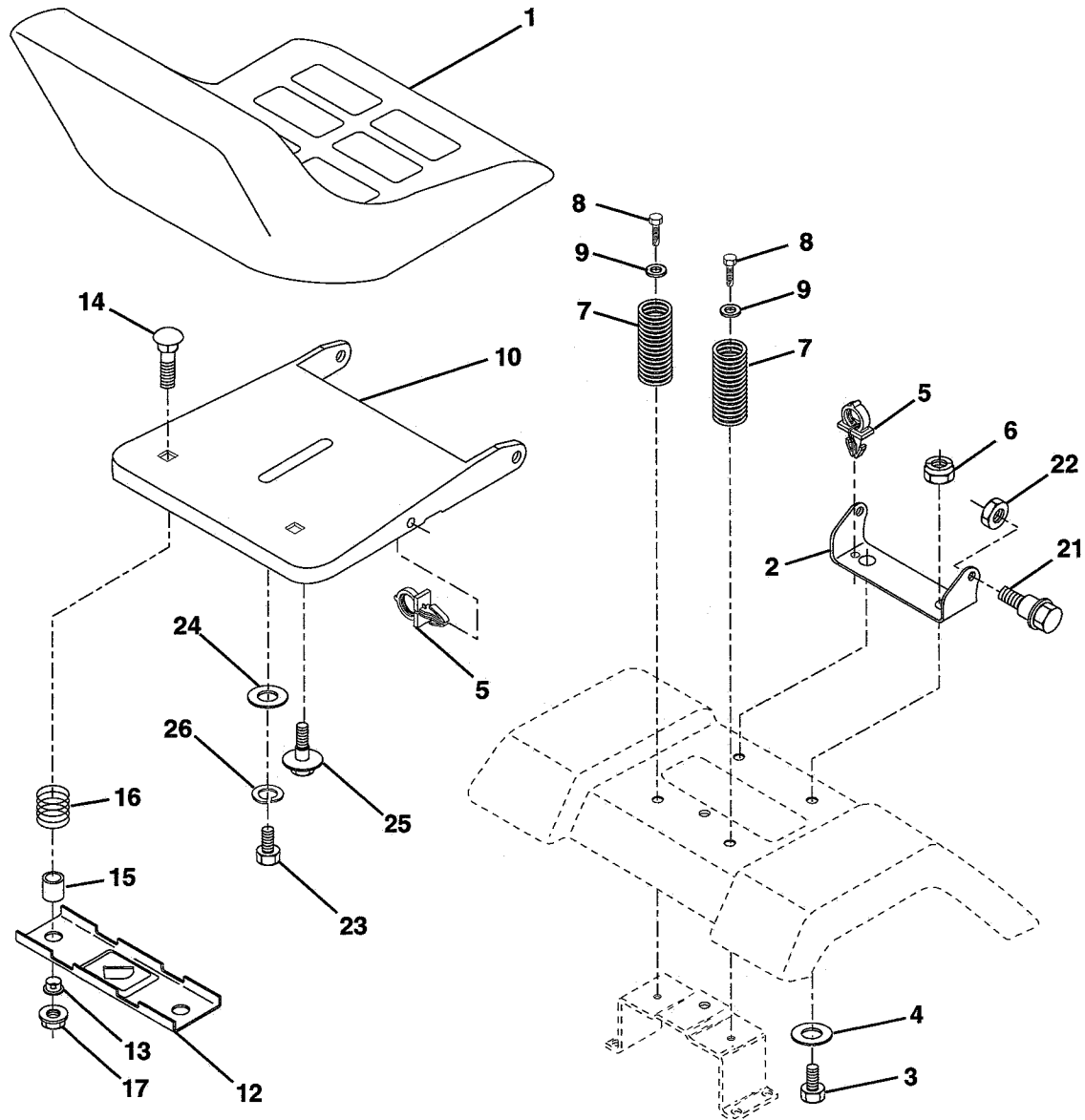
KEY NO.	PART NO.	DESCRIPTION
1	532 17 05-51	Control Th/ch Flag
2	817 72 04-08	Screw Hex Thd Cut 1/4-20 x 1/2
3	-----	Engine B&S Model No. 287707 (Order Parts From Engine Manufacturer)
4	532 13 73-52	Muffler
13	532 16 52-91	Gasket Eng 1 313 Id Tin Plated
14	532 14 84-56	Tube Drain Oil Easy
16	811 05 06-00	Washer Lock Ext Tooth 3/8
23	532 16 98-37	Shield Brn/Dbr Guard
25	532 18 09-45	Control Choke
26	873 92 06-00	Nut Keps 3/8-24 Unf
29	532 13 71-80	Kit Spark Arrestor (Flat Scrn)
31	532 18 06-45	Tank Fuel Front
32	532 14 05-27	Cap Asm Fuel W/sym Vented
33	532 12 34-87	Clamp Hose Black
37	532 13 70-40	Line Fuel 20"
38	532 14 83-15	Plug Drain Oil Easy
40	532 12 40-28	Bushing Snap Nyl Blk Fuel Line
41	532 12 49-52	Bushing
44	817 67 04-12	Screw Hexwsh Thdrol 1/4-20x3/4
45	817 00 06-12	Screw Hex Wsh Thdrol 3/8-16 x 3/4
46	819 09 14-16	Washer 9/32 X 7/8 X 16 Ga
62	810 04 05-00	Washer Lock Hvy Hlcl Spr 5/16
72	871 07 05-12	Screw Hexhd Cap 5/16-18 x 3/4
78	817 06 06-20	Screw 3/8-16x1-1/4
81	873 51 04-00	Nut 1/4-20
112	532 13 92-77	Stem Tank Fuel

**NOTE:** All component dimensions given in U.S. inches  
1 inch = 25.4 mm

## REPAIR PARTS

**TRACTOR - MODEL NO. RZ145H42D PRODUCT NO. 954 56 76-97**

## SEAT ASSEMBLY



KEY NO.	PART NO.	DESCRIPTION
1	532 12 74-28	Seat
2	532 14 05-51	Bracket Pivot Seat 8 720
3	871 11 06-16	Bolt Fin Hex 3/8-16unc X 1
4	819 13 16-10	Washer 13/32 X 1 X 10 Ga
5	532 14 50-06	Clip Push-In
6	873 80 06-00	Nut Hex w/Ins. 3/8-16 Unc
7	532 12 41-81	Spring Seat Cprsn 2 250 Blk Zi
8	817 00 06-16	Screw 3/8-16 X 1-1/2
9	819 13 16-14	Washer 13/32 X 1 X 14 Ga.
10	532 18 24-93	Pan Seat
12	532 12 12-46	Bracket Mounting Switch
13	532 12 12-48	Bushing Snap Blk Nyl 50 Id

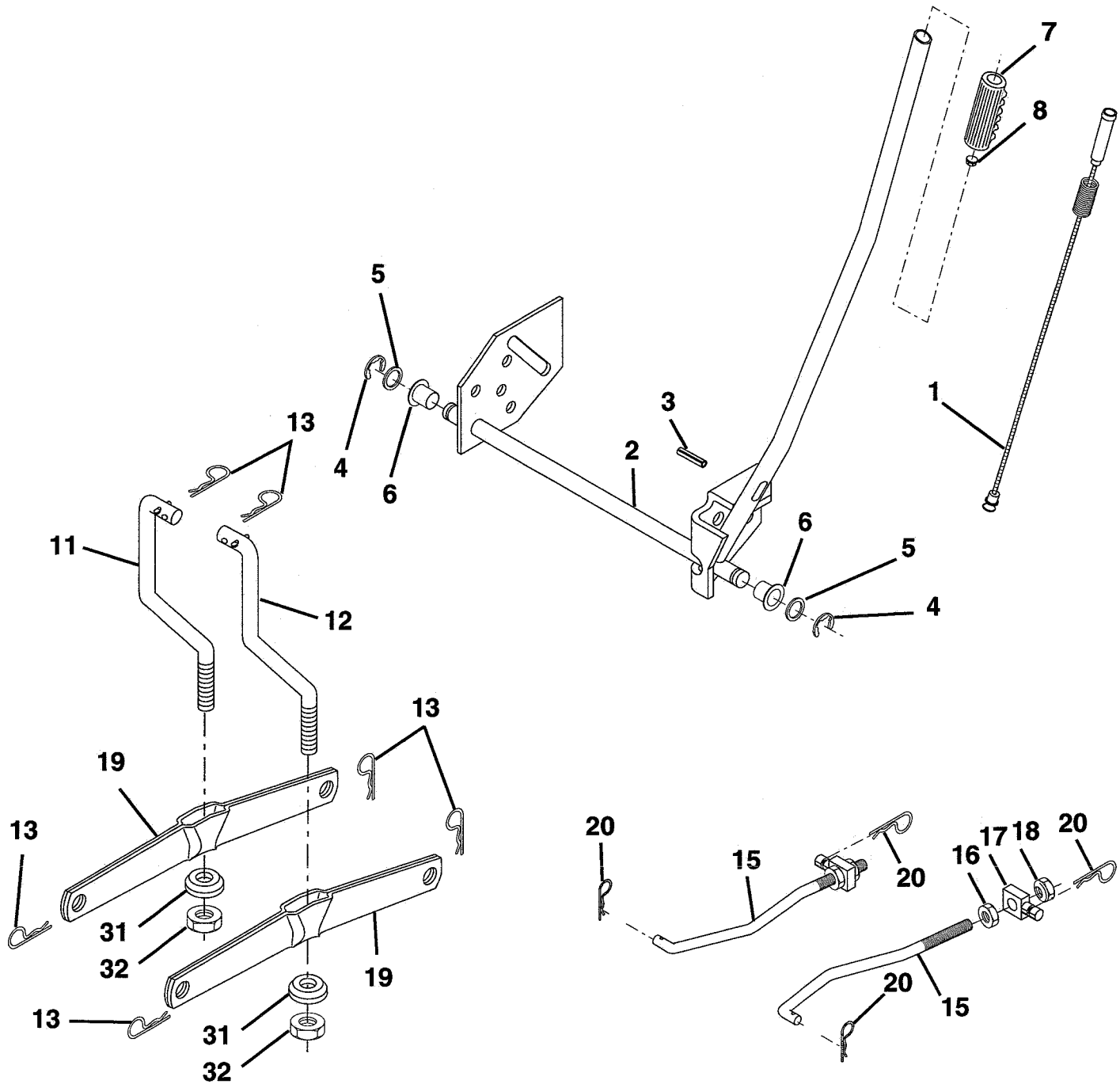
KEY NO.	PART NO.	DESCRIPTION
14	872 05 04-12	Bolt Rdhd Sqnk 1/4-20x1-1/2
15	532 13 43-00	Spacer Split 28x 96 Yel Zinc
16	532 12 12-50	Spring Cprsn 1 27 Blk Pnt
17	532 12 39-76	Nut Lock 1/4 Lge Flg Gr 5 Zinc
21	532 17 18-52	Bolt Shoulder 5/16-18 Unc
22	873 80 05-00	Nut Hex Lock W/Ins 5/16-18
23	871 11 08-14	Bolt Hex
24	819 17 19-12	Washer 17/32 X 1-3/16 X 12 Ga.
25	532 12 70-18	Bolt Shoulder 5/16-18 X 62
26	810 04 08-00	Washer Lock Hvy HLCL SPR 1/2

**NOTE:** All component dimensions given in U.S. inches.  
1 inch = 25.4 mm

# REPAIR PARTS

TRACTOR - MODEL NO. RZ145H42D PRODUCT NO. 954 56 76-97

## MOWER LIFT



# REPAIR PARTS

TRACTOR - MODEL NO. RZ145H42D PRODUCT NO. 954 56 76-97  
MOWER LIFT

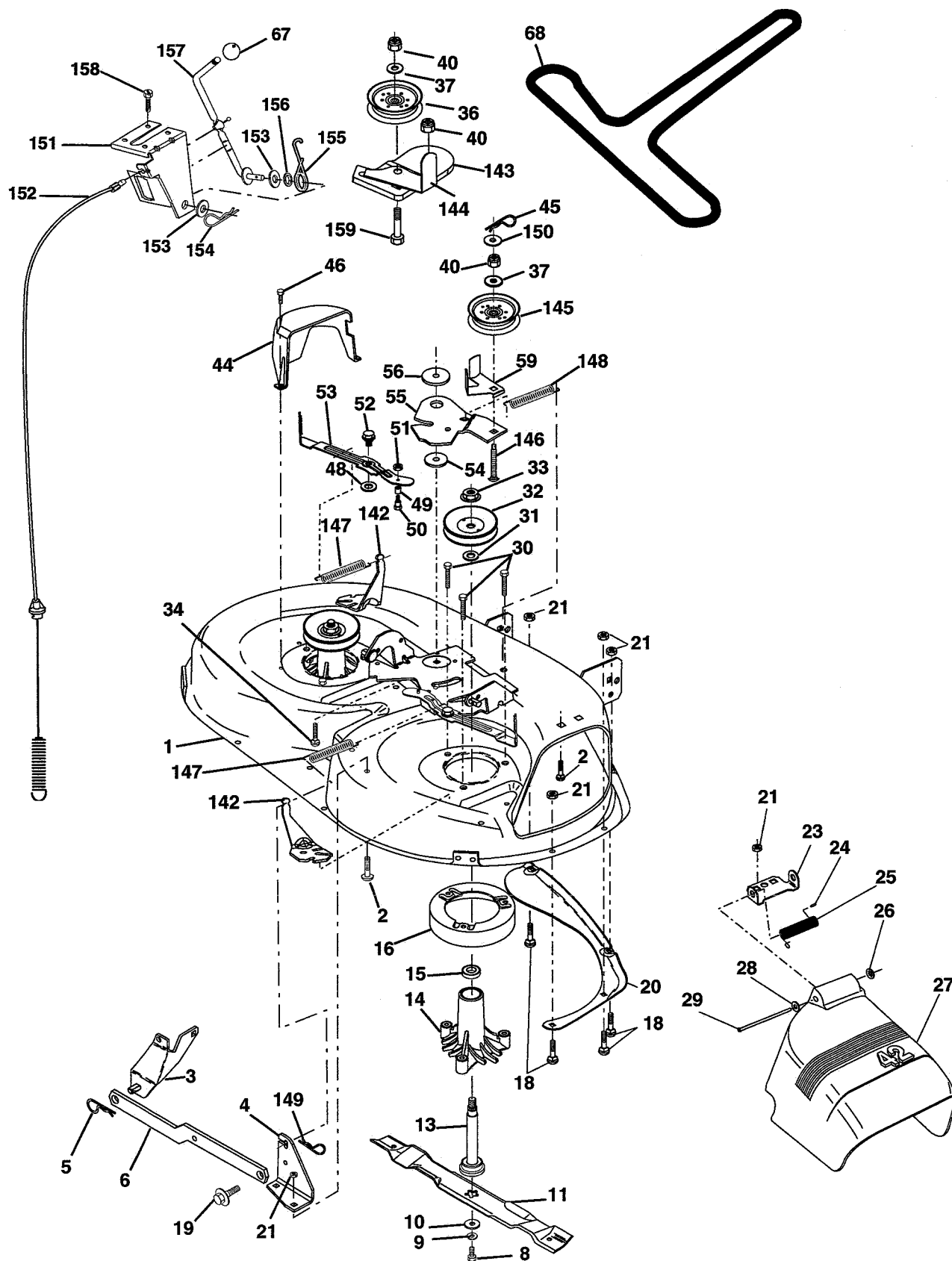
KEY NO.	PART NO.	DESCRIPTION
1	532 1594-60	Wire Asm Inner W/plunger 17 32
2	532 1594-71	Shaft Asm Lift LH Inf Hgt P/L
3	532 1057-67	Pin Groove 1 500 Zinc
4	812 0000-02	E Ring #5133-62
5	819 21 16-21	Washer 21/32 X 1 X 21 Ga
6	532 1201-83	Bearing Nylon Blk 629 Id
7	532 1094-13	Grip Handle
8	532 1245-26	Button Plunger
11	532 1398-65	Link Lift LH
12	532 1398-66	Link Lift RH
13	532 1246-70	Retainer Spring
15	532 1732-88	Link Front
16	873 3508-00	Nut Jam Hex 1/2-13 Unc
17	532 1756-89	Trunnion Blk Zinc
18	873 8008-00	Nut Lock W/wsh 1/2-13unc
19	532 1398-68	Arm Suspension Rear
20	532 1635-52	Retainer Spring
31	532 1698-65	Bearing pvt. Lift
32	873 5406-00	Nut Crownlock 3/8-24

**NOTE:** All component dimensions given in U.S. inches  
1 inch = 25.4 mm

# REPAIR PARTS

TRACTOR - MODEL NO. RZ145H42D PRODUCT NO. 954 56 76-97

## MOWER DECK



# REPAIR PARTS

TRACTOR - MODEL NO. RZ145H42D PRODUCT NO. 954 56 76-97

## MOWER DECK

KEY NO.	PART NO.	DESCRIPTION
1	532 16 58-92	Deck Asm MWR 42"weldment
2	872 14 05-06	Bolt Rdhd Sqnk 5/16-18unc X3/4
3	532 13 80-17	Bracket Asm Fr Sway Bar 38/42
4	532 16 54-60	Bracket Asm Deck 42"sway Bar
5	532 12 46-70	Retainer Spring
6	532 17 80-24	Bar Sway Deck
8	532 85 08-57	Bolt 3/8 - 24 X 1.25 Gr 8
9	810 03 06-00	Washer Lock Hvy 3/8
10	532 14 02-96	Washer Hard Blade Mower Vented
11	532 13 84-98	Blade Mower 42"
13	532 13 76-45	Shaft Asm W/lower Bearing
14	532 12 87-74	Housing Mandrel Vented
15	532 11 04-85	Bearing Ball Mandrel
16	532 17 44-93	Stripper Mower Vented
18	872 14 05-05	Bolt Rdhd Sqnk 5/16-18 X 5/8
19	532 13 28-27	Bolt Shoulder
20	532 15 97-70	Baffle Vortex 42
21	873 68 05-00	Nut Crownlock 5/16-18 UNC
23	532 17 75-63	Bracket Deflector Mower 42"
24	532 10 53-04	Cap Sleeve 80x 112 Blk Mower
25	532 12 37-13	Spring Torsion Deflector 2 52
26	532 11 04-52	Nut Push Phos & Oil
27	532 17 18-59	Shield Deflector Mower 42" Blk
28	819 11 10-16	Washer 11/32 X 5/8 X 16 Ga
29	532 13 14-91	Rod Hinge 42"6 75 Wlg
30	532 17 39-84	Screw Thd Rolling Washer Head
31	532 12 99-63	Washer Spacer Mower Vented
32	532 15 35-35	Pulley Mandrel 42"
33	532 17 83-42	Nut 9/16 Toplock Flng Oil Dip
34	872 11 06-14	Bolt Rdhd 3/8-16uncx1-3/4 Gr5
36	532 13 14-94	Pulley Idler Flat 3 060
37	819 13 13-16	Washer 13/32 X 13/16 X 16
40	873 68 06-00	Nut Crownlock 3/8-16 UNC
44	532 14 00-88	Guard Mandrel LH Black
45	532 12 47-88	Spring Retainer 1" Zinc/cad
46	532 13 77-29	Screw Hex Thd Cut 1/4-20x5/8 T
48	532 13 39-44	Washer Hardened Smaller
49	532 17 42-84	Roller Asm Cam Follower

KEY NO.	PART NO.	DESCRIPTION
50	532 13 13-40	Bolt Shldr 10-24 Zinc Gr 5 42"
51	532 06 91-80	Nut Lock #10-24 Unc
52	532 13 98-88	Bolt Shoulder 5/16-18 Unc Blkz
53	532 13 18-45	Arm Asm Pad Brake
54	532 13 39-43	Washer Hardened
55	532 15 50-46	Arm Idler 42"mower LT/YT
56	532 16 57-23	Spacer Retainer Mower
59	532 14 10-43	Guard TUV Idler
67	532 10 69-32	Knob Rd 3/8-16 Plstc Thds Blk
68	532 18 02-15	V-Belt Mower 42"
142	532 16 58-90	Arm Spring Brake Mower
143	532 15 71-09	Bracket Arm Idler 42"
144	532 15 86-34	Keeper Belt 42" Clutch Idler
145	532 16 58-88	Pulley Idler Flat
146	532 17 19-77	Bolt Carriage Idler
147	532 17 97-48	Spring Extension
148	532 16 90-22	Spring Return Idler
149	532 16 98-98	Retainer Spring Yellow
150	819 09 12-16	Washer 9/32 x 3/4 x 16 Ga.
151	532 16 96-70	Bracket Clutch Cable
152	532 18 15-55	Clutch Cable 42"
153	532 16 96-74	Washer Flat 3/8" Type B
154	532 16 96-75	Spring Retainer
155	532 16 96-71	Spring Retention Lvr Cltch Cab
156	532 16 96-72	Spacer Clutch Cable
157	532 16 96-69	Rod Clutch Cable 3/8"
158	817 72 04-08	Screw Hex Thd Cut 1/4-20 x 1/2
159	872 14 06-14	Bolt Rdhd Sqn 3/8-16 Unc x 1-3/4
--	532 13 07-94	Mandrel Asm Service (Includes Housing, Shaft and Shaft Hardware Only-Pulley Not Included)
--	532 18 19-25	Replacement Mower, Complete

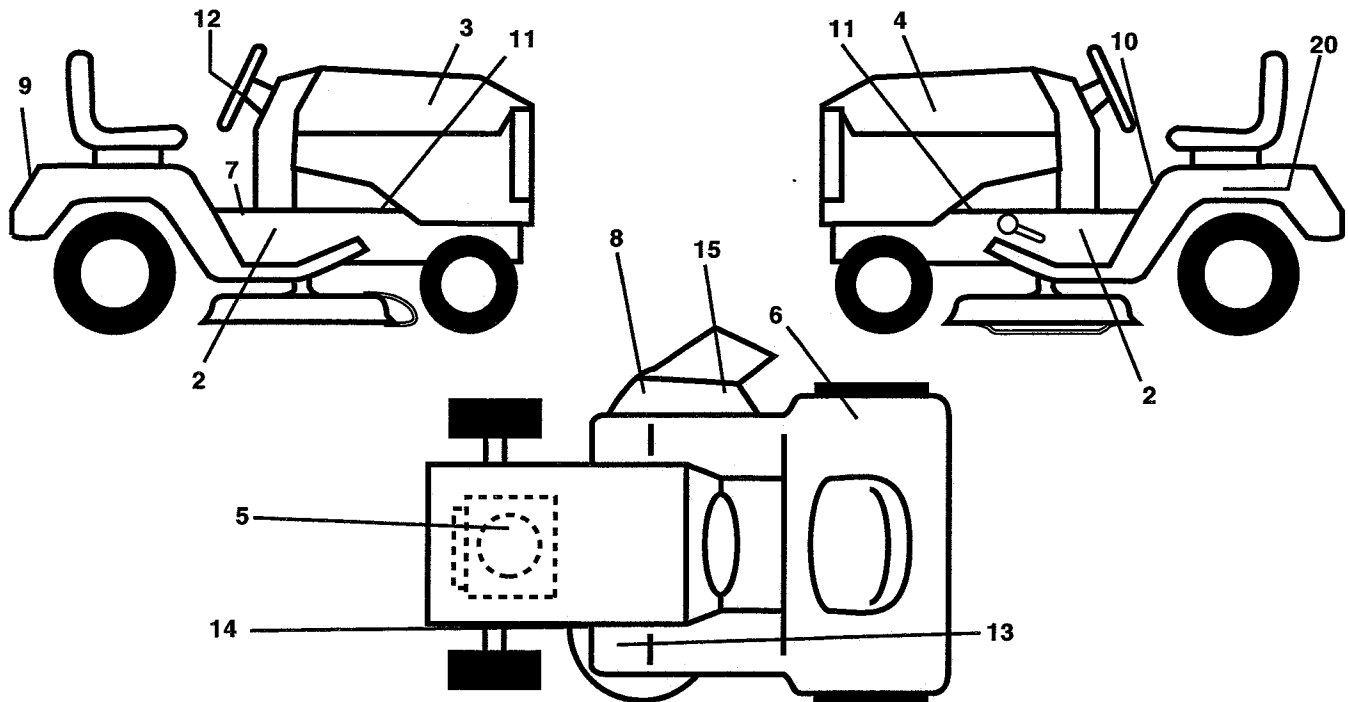
**NOTE:** All component dimensions given in U.S. inches  
1 inch = 25.4 mm



# REPAIR PARTS

TRACTOR - MODEL NO. RZ145H42D PRODUCT NO. 954 56 76-97

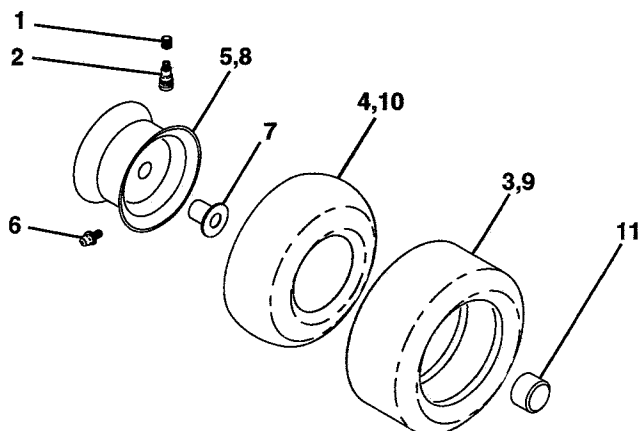
## DECALS



KEY NO.	PART NO.	DESCRIPTION
2	532 18 11-49	Decal Chassis HP
3	532 18 11-44	Decal Hood RH
4	532 18 11-45	Decal Hood LH
5	532 17 63-98	Decal HP Engine
6	532 18 04-32	Decal Fender 100 DB/CE
7	532 14 08-37	Decal Saddle Brake
8	532 17 91-28	Decal Deck "B" 42"
9	532 18 11-46	Decal Fender
10	532 14 54-98	Decal Read Owner's Manual Syms.
11	532 15 97-36	Decal Chassis Hot Muffler
12	532 14 69-02	Decal Wheel Steering

KEY NO.	PART NO.	DESCRIPTION
13	532 15 97-37	Decal Brake/Clutch Symbol LT
14	532 16 03-96	Decal V-Belt Schematic
15	532 18 21-66	Decal Mower Cutfinger Symbol
20	532 14 50-05	Decal Bat Dan/Psn
--	532 16 25-98	Decal Drawbar Load Limit
--	532 16 92-10	Decal By-Pass Lt Hydro
--	532 13 83-11	Decal Handle Lft Height Adjust
--	<b>532 18 31-81</b>	Manual Operator's (Euro)
--	<b>532 18 31-82</b>	Manual Operator's (Scand)
--	<b>532 18 31-83</b>	Manual Parts

## WHEELS & TIRES



KEY NO.	PART NO.	DESCRIPTION
1	532 05 91-92	Cap Valve Tire
2	532 06 51-39	Stem Valve
3	532 10 62-22	Tire F Ts 15 X 6 0 - 6 Service
4	532 05 99-04	Tube Front (Service Item Only)
5	532 14 14-46	Rim Asm 6" front Service
6	532 12 49-57	Fitting Grease (Front Wheel Only)
7	532 12 49-59	Bearing Flange (Front Wheel Only)
8	532 14 14-47	Rim Asm 8" rear Service
9	532 10 62-68	Tire R Ts 18 x 9.5-8 C Service
10	532 12 49-26	Tube Rear (Service Item Only)
11	532 17 50-39	Cap Axle Blk 1 50 X 1 00
--	532 14 43-34	Sealant, Tire ( 10 oz. Tube)

**NOTE:** All component dimensions given in U.S. inches  
1 inch = 25.4 mm