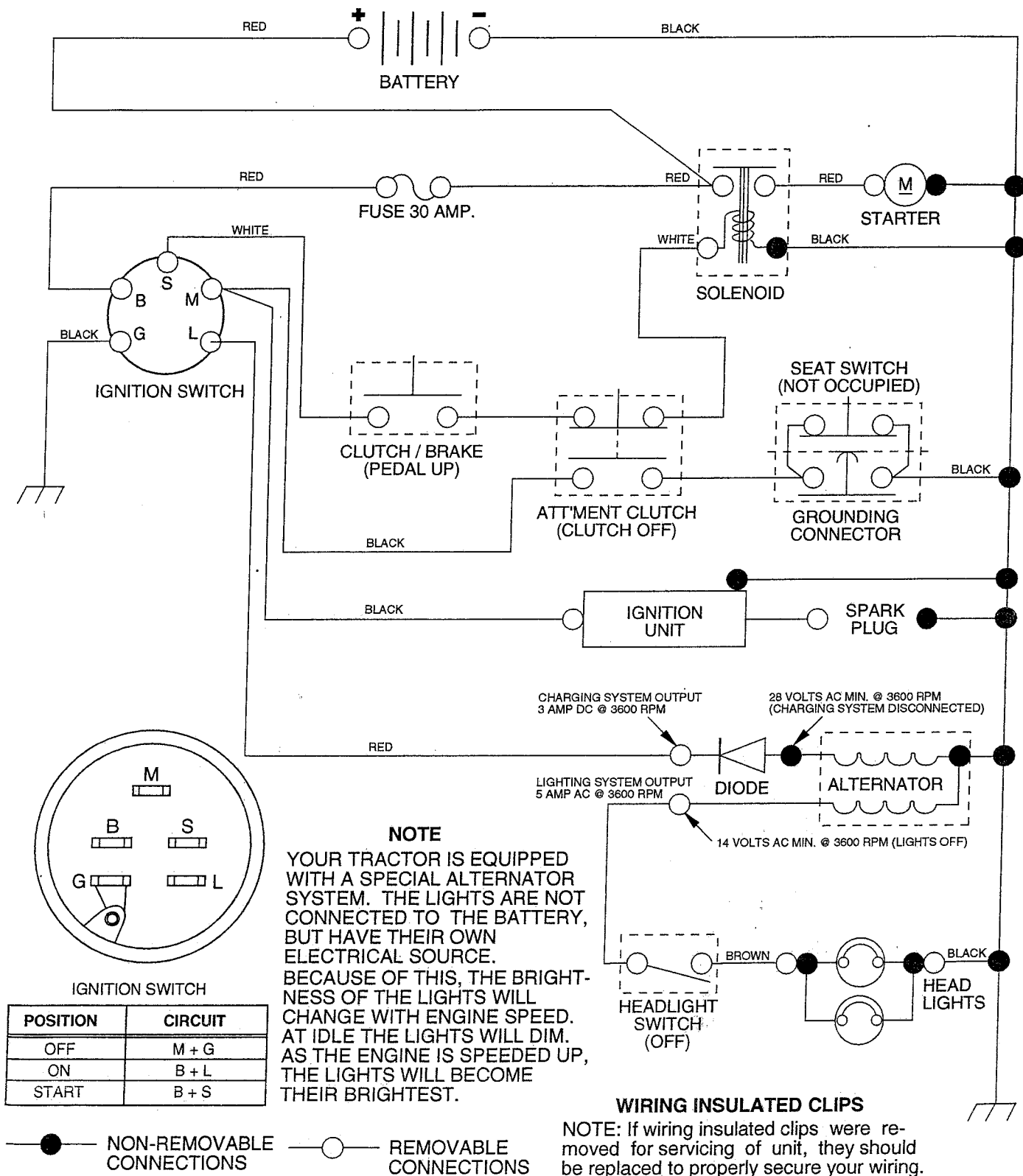


LAWN TRACTOR - MODEL NUMBER SK1238D

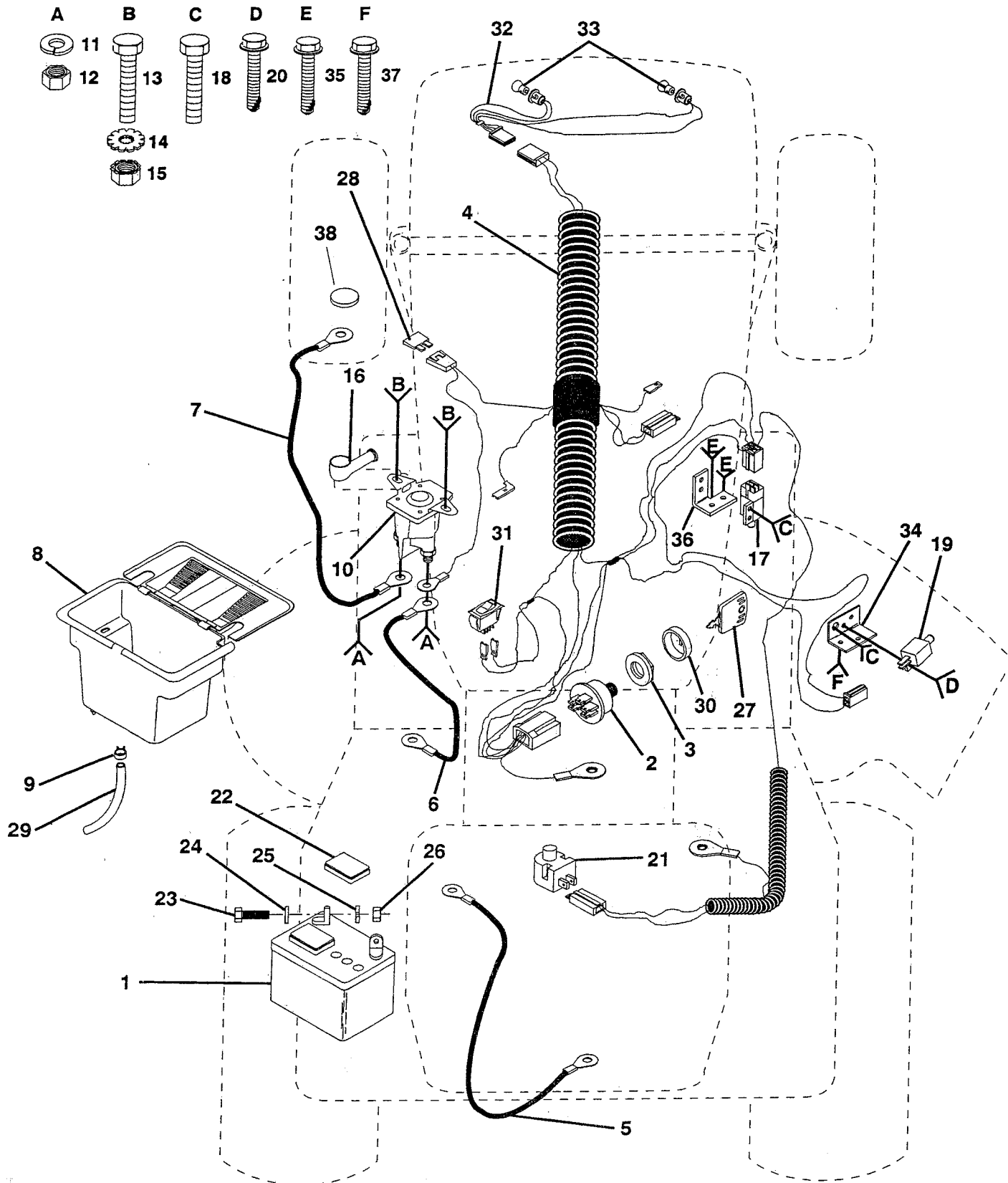
SCHEMATIC



REPAIR PARTS

12 HP 38" RIDING LAWN TRACTOR - - MODEL NUMBER SK1238D

ELECTRICAL



REPAIR PARTS

12 HP 38" RIDING LAWN TRACTOR - - MODEL NUMBER SK1238D

ELECTRICAL

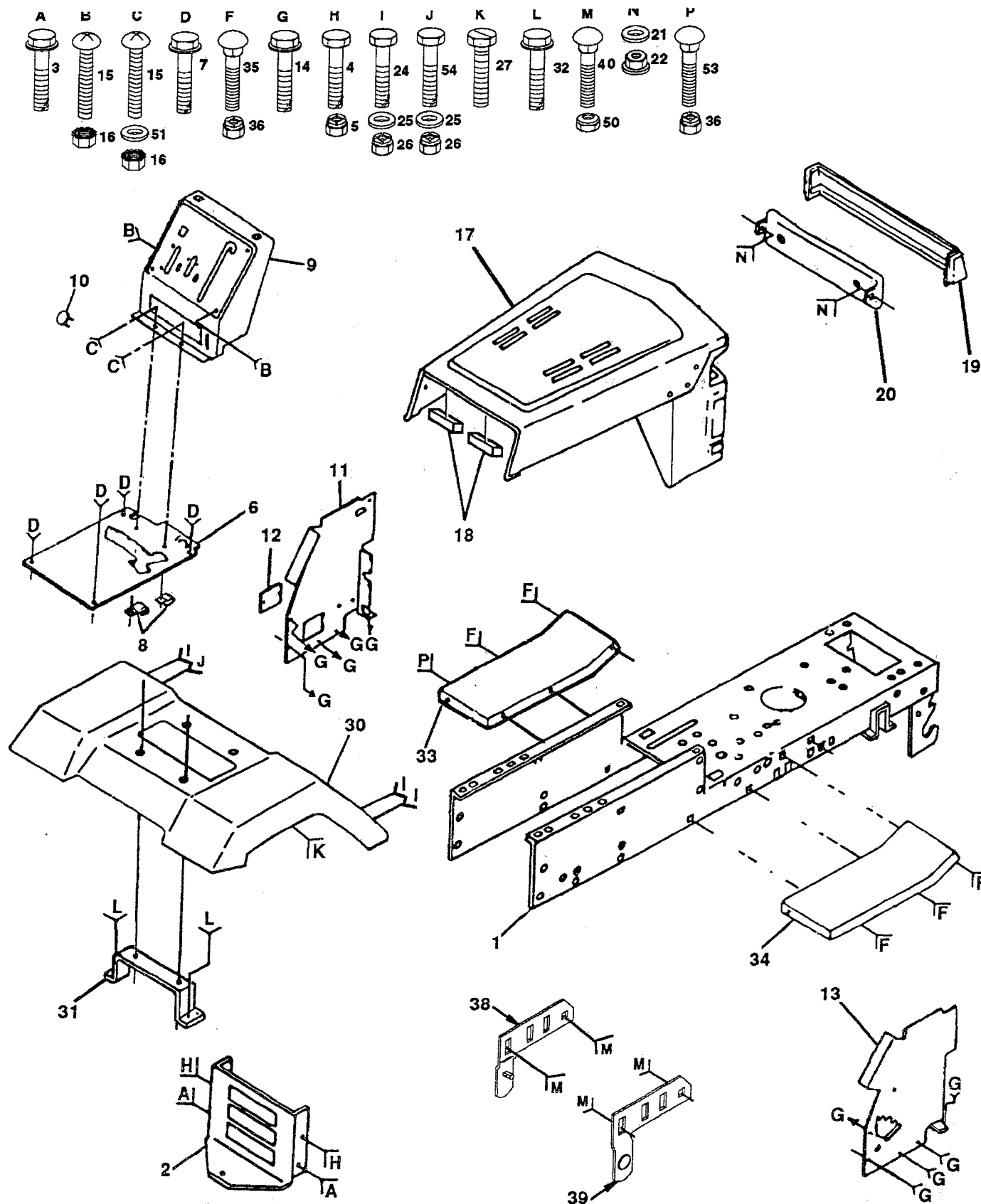
KEY NO.	PART NO.	DESCRIPTION	KEY NO.	PART NO.	DESCRIPTION
1	532121265	Battery 12 VOLT 25 AMP	20	817021008	Screw Tap Hex #10-24unc X 1/2
2	532125104	Switch Ign 5 Term Wo/wash/nut	21	532121305	Switch Plunger Nc Gray
3	532124211	Nut Ignition	22	532121264	Caps Battery 20/25/30 AMP
4	532132017	Harness Ign Bs Dash Headlights	23	874760412	Bolt Hex Hd 1/4-20unc X 3/4
5	532124773	Cable Ground 6 Ga 12"black	24	819091016	Washer 9/32 X 5/8 X 16 Ga
6	532132202	Cable Battery 6 Ga 43"red	25	810040400	Washer Lock Hvy Helical 1/4
7	532124780	Cable Battery 6 Ga 11"red	26	873220400	Nut Fin Hex 1/4-20 Unc
8	532129965	Case Battery Hng Mech W/lid	27	532122147	Key Ign Molded Generic
9	532109596	CLAMP Hose Olive	28	532108824	Fuse 30 AMP Auto Green
10	532138406	Solenoid	29	532105687	Tube Plastic 9"
11	810090400	Washer Lock 1/4	30	532123620	Cover Sw Key Blk 1 25 Text SLT
12	873350400	Nut Jam Hex 1/4-20 Unc	31	532110712	Switch Light Blk Blk Red
13	874780408	Bolt Fin Hex 1/4-20uncx1/2 Gr5	32	532136850	Harness Asm Light W/4152j
14	811050400	Washer Lock Ext Tooth 1/4	33	532004152	Bulb Light #1156
15	873510400	Nut Keps Hex 1/4-20 Unc	34	532108236	Bracket Switch Clutch
16	532131563	Cover Terminal Red	35	817021008	Screw Tap Hex #10-24unc X 1/2
17	532109553	Switch Intlk Clutch Red 4 Term	36	532130890	Bracket Switch Interlock
18	817021008	Screw Tap Hex #10-24unc X 1/2	37	817021008	Screw Tap Hex #10-24unc X 1/2
19	532104445	Switch Intlk Clutch Red 2 Term	38	811150400	Washer Lock Internal Tooth 1/4

NOTE: All componenet dimensions given in U.S. inches.
1 inch = 25.4 mm.

REPAIR PARTS

12 HP 38" RIDING LAWN TRACTOR - - MODEL NUMBER SK1238D

CHASSIS AND ENCLOSURES



REPAIR PARTS

12 HP 38" RIDING LAWN TRACTOR - - MODEL NUMBER SK1238D

CHASSIS AND ENCLOSURES

KEY NO.	PART NO.	DESCRIPTION
1	532135034	Chassis Wldmt 11 Ga 38/42 W/pvt
2	532137275	Drawbar LT/YT 11 Ga
3	817490612	Screw Thdrol 3/8-16x3/4 Ty-tt
4	874760612	Bolt Fin Hex 3/8-16unc X 3/4
5	873680600	Nut Crownlock 3/8-16 Unc
6	532138338	Saddle Slksr 5sp D W/sym Nons
7	817490608	Screw Thdrol 3/8-16x1/2 Ty-tt
8	532124996	Clip Line Fuel 13/32 Mtg Hole
9	532125447	Dash Slksr 1-pc M W/i N/c Sym
10	532005479	Plug Button Blk 359 Dia Choke
11	532122795	Panel Dash LH
12	532121794	Cover Access Black Square
13	532124829	Panel Slksr Dash RH Wld Notch
14	817490608	Screw Thdrol 3/8-16x1/2 Ty-tt
15	874180512	Screw Mach TRHD 5/16-18uncx3/4
16	873510500	Nut Keps 5/16-18 Unc
17	532125399	Hood/grille Asm Pnt Welded
18	532126938	Bumper Hood
19	532133805	Lens Grille H/bar Clear Lt
20	532132257	Bezel Light

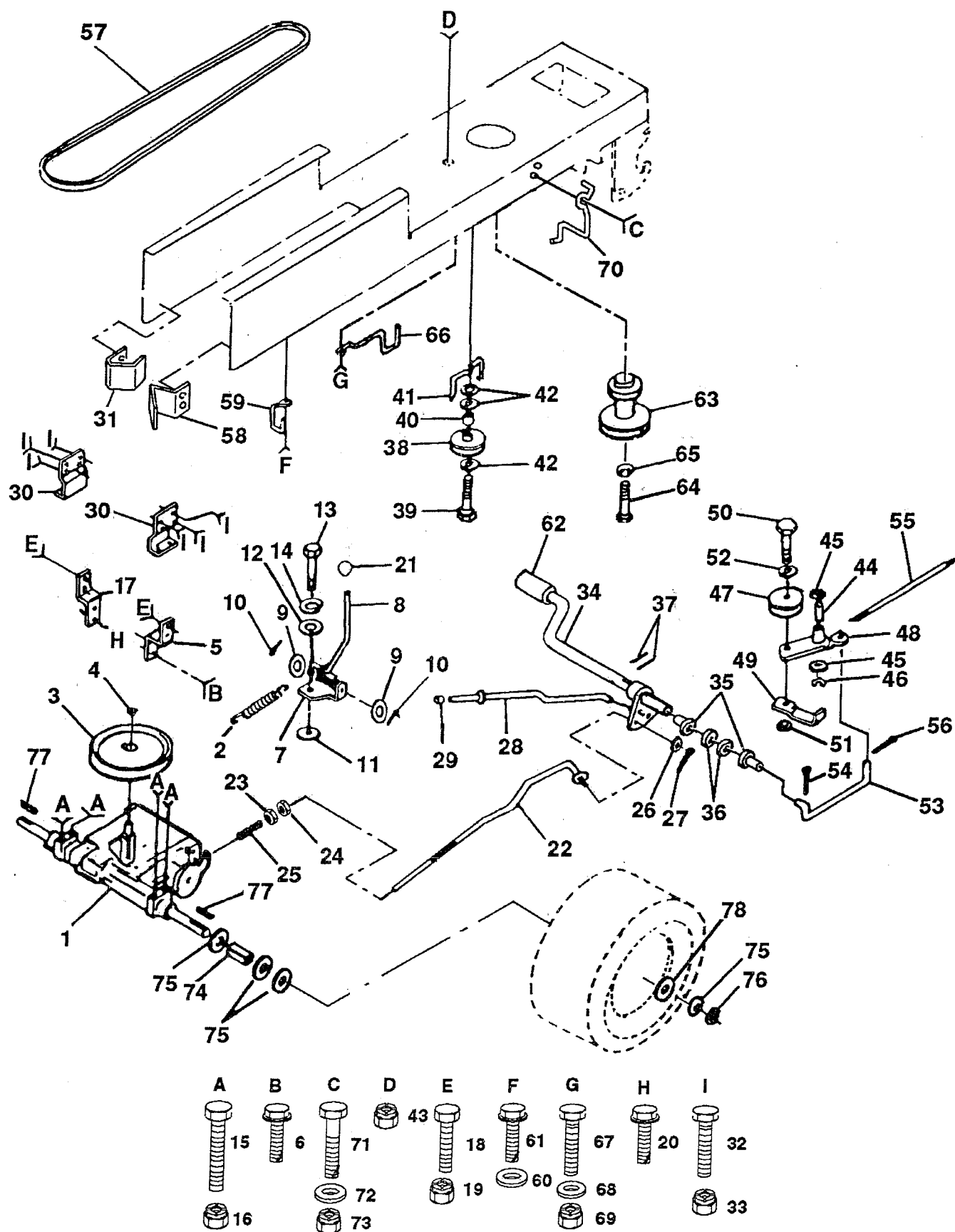
KEY NO.	PART NO.	DESCRIPTION
21	819091216	Washer 9/32 X 3/4 X 16Ga
22	532108067	Nut Pal
24	874760612	Bolt Fin Hex 3/8-16unc X 3/4
25	819131312	Washer 13/32 X 13/16 X 12 Ga
26	873680600	Nut Crownlock 3/8-16 Unc
27	817490608	Screw Thdrol 3/8-16x1/2 Ty-tt
30	532125400	Fender Pnt LT W/o Shift(red)
31	532136619	Bracket Fender Repl 109873x
32	817490612	Screw Thdrol 3/8-16x3/4 Ty-tt
33	532125401	Footrest Pnt LH Perf (Red)
34	532125402	Footrest Pnt RH Perf (Red)
35	872110606	Bolt Rdhd Sht Sqnk 3/8-16 X3/4
36	873680600	Nut Crownlock 3/8-16 Unc
38	532134618	Bracket Asm Pvt38 LH MWR Rear
39	532134617	Bracket Asm Pvt38 RH MWR Rear
40	872140606	Bolt Rdhd Sqnk 3/8-16unc X3/4
50	873800600	Nut Lock Hex W/wsh 3/8-16unc
51	819131216	Washer 13/32 X 3/4 X 16 Ga
53	872140608	Bolt Rd Sqnk 3/8 - 16 X 1
54	874760614	Bolt Fin Hex 3/8 - 16 X 7/8

NOTE: All component dimensions given in U.S. inches.
1 inch = 25.4 mm

REPAIR PARTS

12 HP 38" RIDING LAWN TRACTOR - - MODEL NUMBER SK1238D

DRIVE



REPAIR PARTS

12 HP 38" RIDING LAWN TRACTOR - - MODEL NUMBER SK1238D

DRIVE

KEY NO.	PART NO.	DESCRIPTION
1	532137362	Transaxle 5sp Std D4360-47
2	532110422	Spring Return Brake T/a Zinc
3	532123666	Pulley Transaxle 18"tires
4	812000028	Ring Retainer # 5100-62
5	532121520	Strap Torque 30 Degrees
6	817490512	Screw Thdrol 5/16-18 X 3/4 TYT
7	532106919	Plate Rod Shift T/a
8	532124461	Rod Shifter Blk (Dana)
9	819151216	Washer 15/32 X 3/4 X 16 Ga
10	876020416	Pin Cotter 1/8 X 1 Cad
11	532105701	Washer Plate Shf 388 Sq Hole
12	819091210	Washer 9/32 X 3/4 X 10 Ga
13	871040412	Bolt Fin Hex 1/4-28unfx3/4 Gr8
14	810040400	Washer Lock Hvy Helical 1/4
15	874760644	Bolt Fin Hex 3/8-16unc X 2-3/4
16	873680600	Nut Crownlock 3/8-16 Unc
17	532121520	Strap Torque 30 Degrees
18	874760612	Bolt Fin Hex 3/8-16unc X 3/4
19	873680600	Nut Crownlock 3/8-16 Unc
20	817490512	Screw Thdrol 5/16-18 X 3/4 TYT
21	532106933	Knob Rd 1/2-13 Plstc Thds Blk
22	532131867	Rod Brake LT
23	873800600	Nut Lock Hex W/wsh 3/8-16unc
24	873350600	Nut Hex Jam 3/8-16 Unc
25	532106888	Spring Rod Brake 2 00 Zinc
26	819131316	Washer 13/32 X 13/16 X 16 Ga
27	876020412	Pin Cotter 1/8 X 3/4 Cad
28	532128904	Rod Brake Parking LT
29	532071673	Cap Brake Parking Black
30	532109167	Bracket Transmission
31	532127275	Keeper Belt LH LT 14 Ga
32	874760612	Bolt Fin Hex 3/8-16unc X 3/4
33	873680600	Nut Crownlock 3/8-16 Unc
34	532122424	Shaft Asm Pedal Foot 1 930
35	532120183	Bearing Nylon Blk 629 Id
36	819211616	Washer 21/32 X 1 X 16 Ga
37	532124963	Pin Roll 3/16 X 1"
38	532123674	Pulley Idler Flat
39	874760644	Bolt Fin Hex 3/8-16unc X 2-3/4

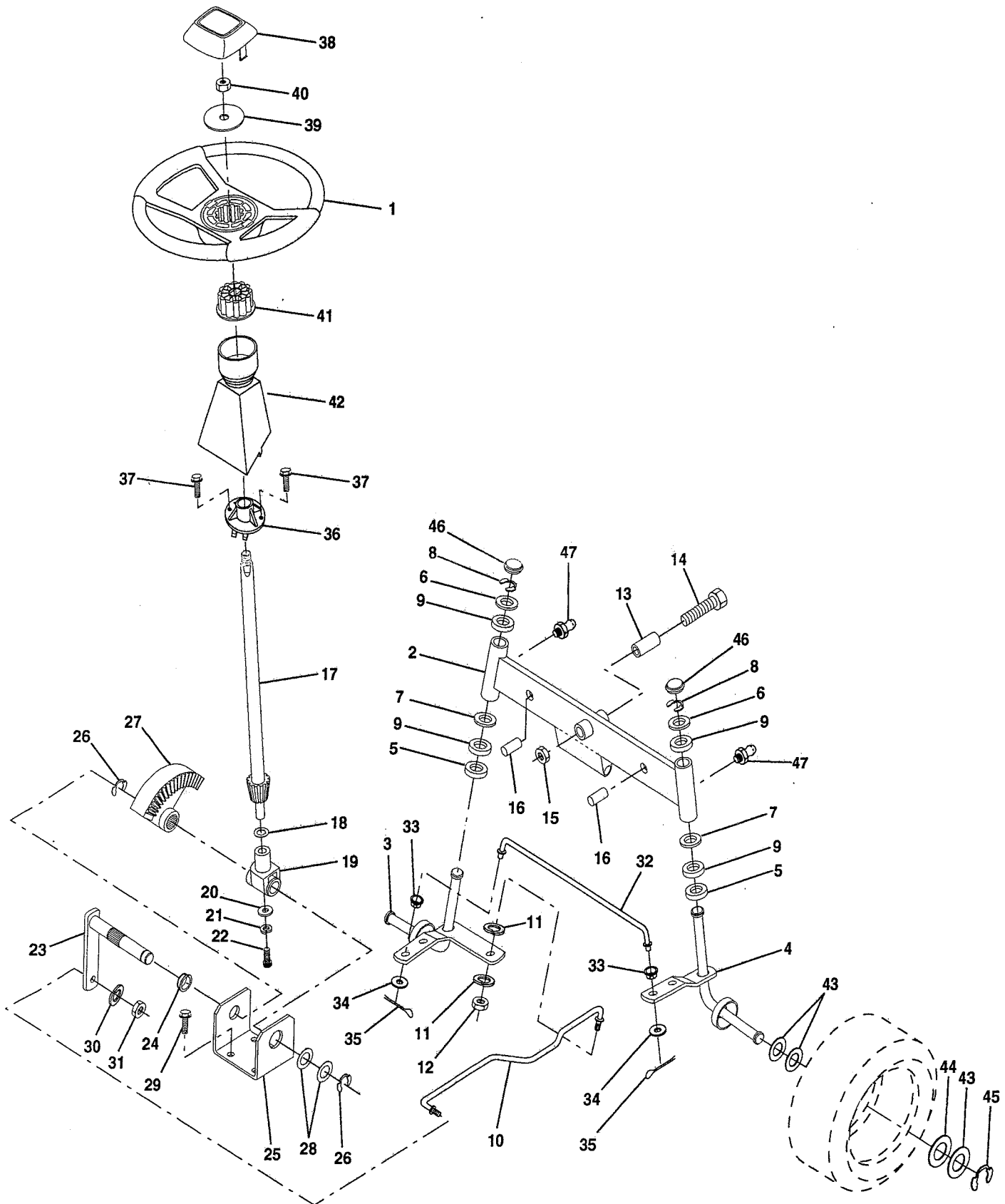
KEY NO.	PART NO.	DESCRIPTION
40	532124965	Spacer Split 395 X 59 Bzp
41	532109070	Keeper Belt Retainer
42	819131312	Washer 13/32 X 13/16 X 12 Ga
43	873680600	Nut Crownlock 3/8-16 Unc
44	532105706	Bearing Nyl 503 X 628 X 1 25
45	532110812	Washer Hardened
46	812000039	Ring Klip #t5304-50
47	532127783	Pulley Idler V Groove Plastic
48	532123789	Bellcrank Asm Clutch
49	532123205	Retainer Belt Style Spring
50	874760624	Bolt Hex Hd 3/8-16unc X 1-1/2
51	873680600	Nut Crownlock 3/8-16 Unc
52	819131316	Washer 13/32 X 13/16 X 16 Ga
53	532105710	Link Clutch 7 66
54	876020412	Pin Cotter 1/8 X 3/4 Cad
55	532105709	Spring Return Clutch 6 75
56	876020412	Pin Cotter 1/8 X 3/4 Cad
57	532125907	V-Belt Ground Drive 90 00
58	532127274	Keeper Belt RH LT Pnt/zinc 16g
59	532136715	Keeper Belt Chassis Span Ctr
60	819131312	Washer 13/32 X 13/16 X 12 Ga
61	817490612	Screw Thdrol 3/8-16x3/4 Ty-tt
62	532124872	Cover Pedal Blk Round
63	532134825	Engine Pulley LT/YT
64	871170764	Bolt Hex 7/16-20x4 Gr 5
65	810040700	Washer Lock Hvy Hlcl Spr 7/16
66	532129921	Keeper Belt Engine LH LT
67	874760616	Bolt Fin Hex 3/8-16unc X 1
68	819131312	Washer 13/32 X 13/16 X 12 Ga
69	873680600	Nut Crownlock 3/8-16 Unc
70	532134683	Guide Belt Mower Drive RH
71	874760616	Bolt Fin Hex 3/8-16unc X 1
72	819132012	Washer 13/32 X 1-1/4 X 12 Ga
73	873680600	Nut Crownlock 3/8-16 Unc
74	532109502	Spacer Split 80x1 94 Cad/zinc
75	532121749	Washer 25/32 X 1 1/4 X 16 Ga
76	812000001	E-ring #5133-75
77	532123583	Key Square 2 0 X 1845/ 1865
78	532121748	Washer 25/32 X 1-5/8 X 16 Ga

NOTE: All component dimensions given in U.S. inches.
1 inch = 25.4 mm

REPAIR PARTS

12 HP 38" RIDING LAWN TRACTOR - - MODEL NUMBER SK1238D

STEERING ASSEMBLY



REPAIR PARTS

12 HP 38" RIDING LAWN TRACTOR - - MODEL NUMBER SK1238D

STEERING ASSEMBLY

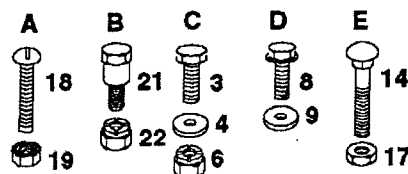
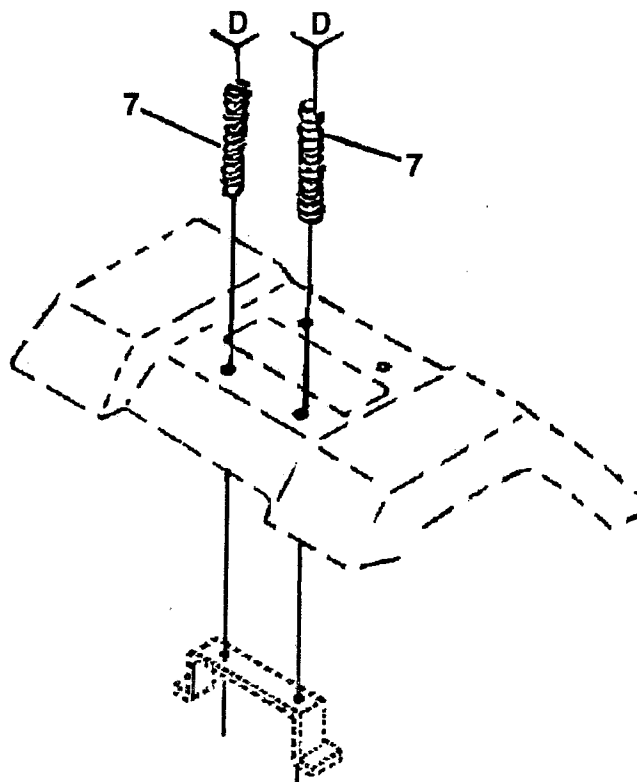
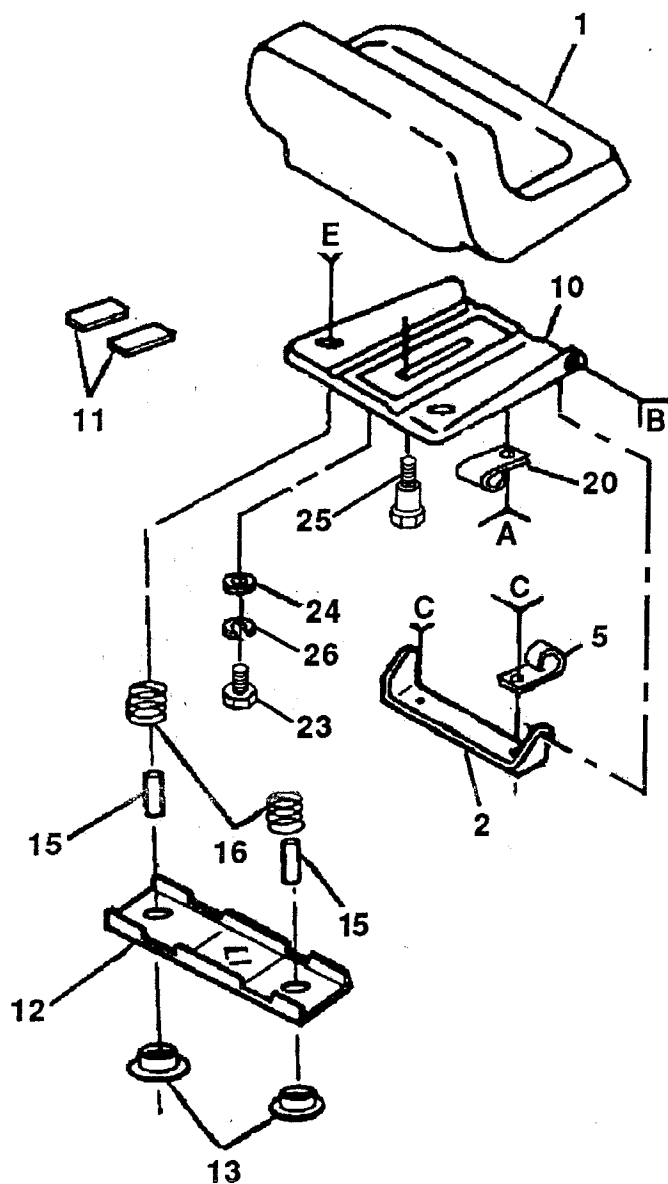
KEY NO.	PART NO.	DESCRIPTION
1	532133741	Wheel Steering Ayp/kelch Blk
2	532133988	Axle Asm Fr LT W/gzks 38/42
3	532135227	Spindle Asm LH
4	532135228	Spindle Asm RH
5	532124931	Bearing Race Thrust Harden
6	532121748	Washer 25/32 X 1-5/8 X 16 Ga
7	819272016	Washer 27/32 X 1-1/4 X 16 Ga
8	812000029	Ring Klip #t5304-75
9	532124937	Bearing Col Strg Blk
10	532130468	Link Drag Sol Bail Jt 20 064
11	810040600	Washer Lock Hvy Hlcl Spr 3/8
12	873610600	Nut Fin Hex 3/8-24 Unf
13	532110438	Spacer Bearing Axle Front
14	532132624	Pin Axle 5/8 X 1 55/1 54 Lg
15	874011056	Bolt Hex 5/8-11 Unc X 3-1/2
16	873901000	Nut Lock Flange 5/8-11 Unc
17	532132614	Shaft Asm Strg 5/8 X 15 19 LT
18	532057079	Washer Thrust 515x 750x 033
19	532124035	Support Shaft
20	532126684	Washer Shim 1/4 X 5/8 X 062
21	810040400	Washer Lock Hvy Helical 1/4
22	871070410	Screw Hex Socket 1/4-20 X 5/8
23	532127501	Shaft Asm Pittman
24	532109816	Nyliner Snap In
25	532124036	Bracket Steering
26	812000029	Ring Klip #t5304-75
27	532136874	Gear Sector
28	532124931	Bearing Race Thrust Harden
29	817490612	Screw Thdrol 3/8-16x3/4 Ty-tt
30	810040600	Washer Lock Hvy Hlcl Spr 3/8
31	873610600	Nut Fin Hex 3/8-24 Unf
32	532130465	Rod Tie Wire Form 19 75 Mech
33	532126847	Bushing Link Drag Blk LR
34	819131416	Washer 13/32 X 7/8 X 16 Ga
35	876020412	Pin Cotter 1/8 X 3/4 Cad
36	532132196	Bushing Strg 5/8 Id Dash
37	817431008	Screw Slftp #10-16 X 1/2 Ty-b
38	532133742	Cap Wheel Steer Ayp/kelch Blk
39	819133808	Washer 13/32 X 2-3/8 X 8 Ga
40	532124701	Nut Lock Center 3/8-24unf
41	532104820	Adaptor Wheel Strg 640/ 635id
42	532124418	Boot Shaft Steering Blk
43	532121749	Washer 25/32 X 1 1/4 X 16 Ga
44	532121748	Washer 25/32 X 1-5/8 X 16 Ga
45	812000029	Ring Klip #t5304-75
46	532121232	Cap Spindle Fr Top Blk
47	532124836	Fitting Grease

NOTE: All component dimensions given in U.S. inches.
1 inch = 25.4 mm

REPAIR PARTS

12 HP 38" RIDING LAWN TRACTOR - - MODEL NUMBER SK1238D

SEAT ASSEMBLY



KEY NO.	PART NO.	DESCRIPTION
1	532127427	Seat V350 Blk/blk Std
2	532126656	Bracket Pivot Seat 8 720
3	874760612	Bolt Fin Hex 3/8-16unc X 3/4
4	819131210	Washer 13/32 X 3/4 X 10 Ga
5	532124996	Clip Line Fuel 13/32 Mtg Hole
6	873680600	Nut Crownlock 3/8-16 Unc
7	532124181	Spring Seat Cprsn 2 250 Blk Zi
8	817490616	Screw Thdrol 3/8-16 X 1 Ty-tt
9	819131614	Washer 13/32 X 1 X 14 Ga
10	532131451	Pan Seat
11	532121251	Strip Foam Gray Or Black
12	532121246	Bracket Mounting Switch
13	532121248	Bushing Snap Blk Nyl 50 Id

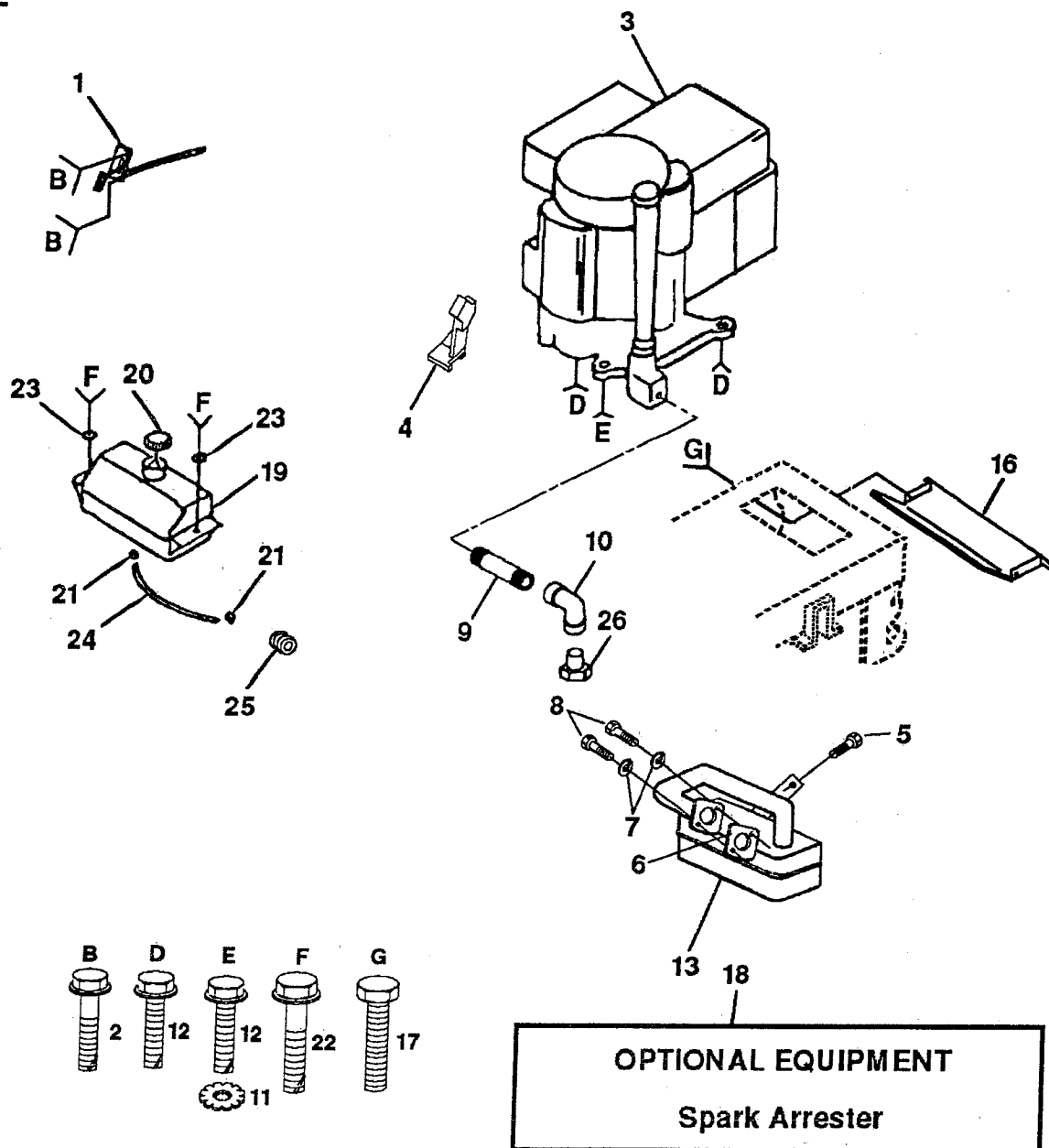
KEY NO.	PART NO.	DESCRIPTION
14	872050411	Bolt Rdhd Sht Nk 1/4-20x1-3/8
15	532134300	Spacer Split 28x 96 Yel Zinc
16	532121250	Spring Cprsn 1 27 Blk Pnt
17	532123976	Nut Lock 1/4 Lge Flg Gr 5 Zinc
18	874641008	Screw SLTD Pan Hd #10-32 X 1/2
19	873951000	Nut Keps #10-32 Unf
20	532124967	Clip Insulated 11/32 Mtg Hole
21	532105529	Bolt Shoulder 5/16-18 Unc Blkz
22	873680500	Nut Crown Lock 5/16-18
23	819171912	Washer 17/32 X 1-3/16 X 12 Ga
23	874780814	Bolt Fin Hex 1/2-13 X 7/8 Gr 5
25	532127018	Bolt Shoulder 5/16-18 X 62
26	810040800	Washer Lock Hvy Hlcl Spr 1/2

NOTE: All component dimensions given in U.S. inches
1 inch = 25.4 mm

REPAIR PARTS

12 HP 38" RIDING LAWN TRACTOR - - MODEL NUMBER SK1238D

ENGINE



KEY NO.	PART NO.	DESCRIPTION
1	532132623	Control Th/ch RH Blk Tee Eec
2	817720410	Screw Hex Thd Cut 1/4-20x5/8 T
3	-	Engine B&S 12HP Dual Non-ic Model #282707
4	532133097	Stop Throt 2700 Rpm
5	874760416	Bolt Fin Hex 1/4-20 Unc X 1
6	532125593	Gasket Eng 1 313 Id Tin Plated
7	810040500	Washer Lock Hvy Hlcl Spr 5/16
8	871070510	Screw Hexhd Cap 5/16-18x5/8
9	813280324	Nipple Pipe 3/8 Npt X 3"
10	813200300	Elbow Std 90 Degree 3/8-18 Npt
11	811050600	Washer Lock Ext Tooth 3/8
12	817490620	Screw Thdrol 3/8-16x1-1/4 TYTT

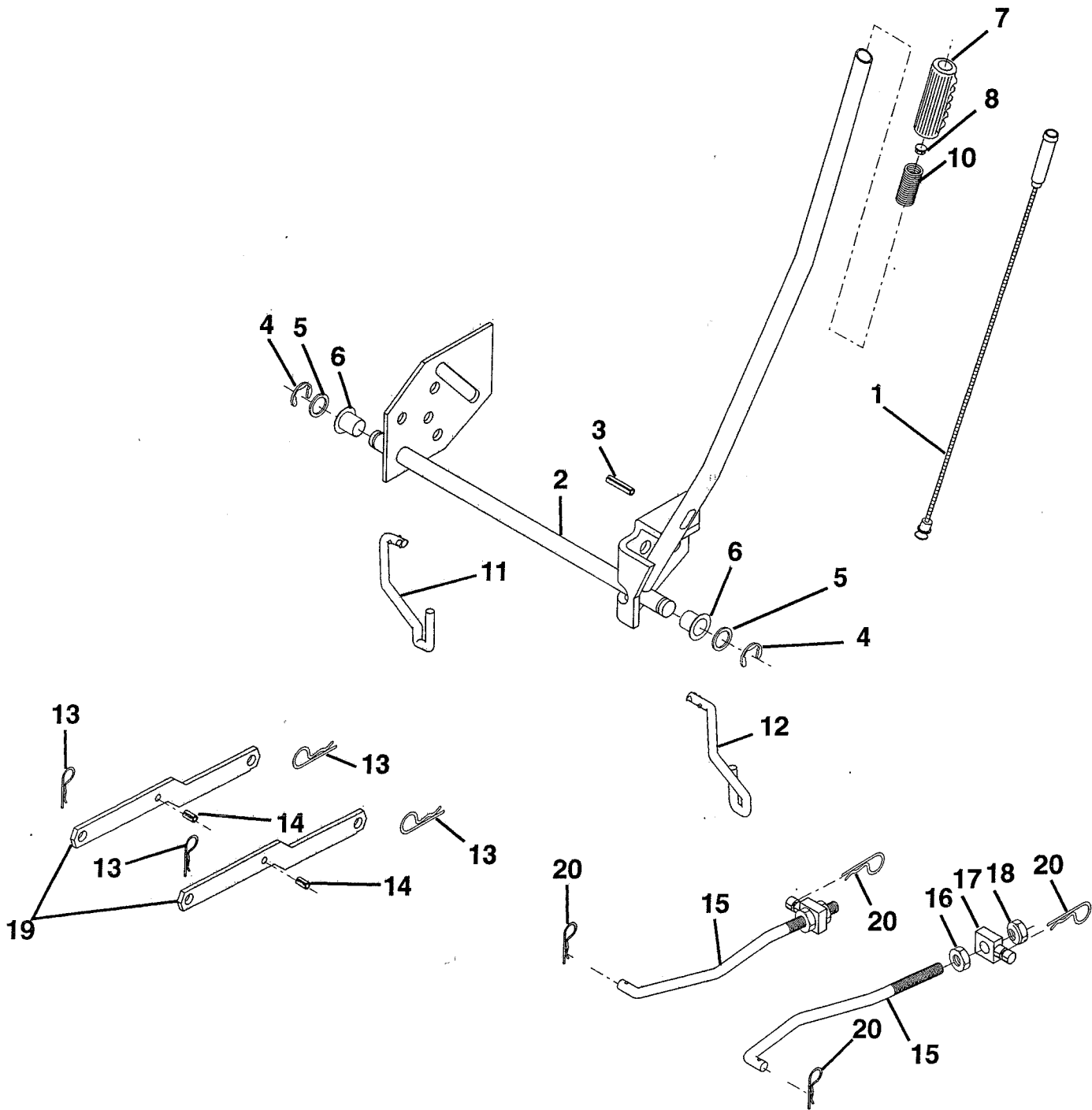
KEY NO.	PART NO.	DESCRIPTION
13	532137348	Muffler LT B&S 12/12 5 HP
16	532128953	Shield Heat Browning LT/YT
17	817021008	Screw Tap Hex #10-24unc X 1/2
18	532137179	Kit Spark Arrestor 1 25
19	532109202	Tank Fuel Front 1 25
20	532123549	Cap Asm Fuel W/sym Vented
21	532123487	CLAMP Hose Blk
22	817490612	Screw Thdrol 3/8-16x3/4 Ty-tt
23	819131612	Washer 13/32 X 1 X 12 Ga
24	532008548	Line Fuel 13"
25	532124028	Bushing Snap Nyl Blk Fuel Line
26	-	Plug Oil Drain (Order From Engine Manufacturer)

NOTE: All component dimensions given in U.S. inches
1 inch = 25.4 mm

REPAIR PARTS

12 HP 38" RIDING LAWN TRACTOR - - MODEL NUMBER SK1238D

MOWER LIFT



REPAIR PARTS

12 HP 38" RIDING LAWN TRACTOR - - MODEL NUMBER SK1238D

MOWER LIFT

KEY NO.	PART NO.	DESCRIPTION
1	532136973	Wire Asm Inner W/plunger
2	532122507	Shaft Asm Lift 9 680
3	532105767	Pin Groove 1 500 Zinc
4	812000002	E Ring #5133-62
5	819211621	Washer PLTD 21/32 X 1 X 21ga
6	532120183	Bearing Nylon Blk 629 Id
7	532109413	Grip Handle Bicycle Matte Blk
8	532124526	Button Plunger Black
10	532122512	Spring Cprsn 3 750 Oiled

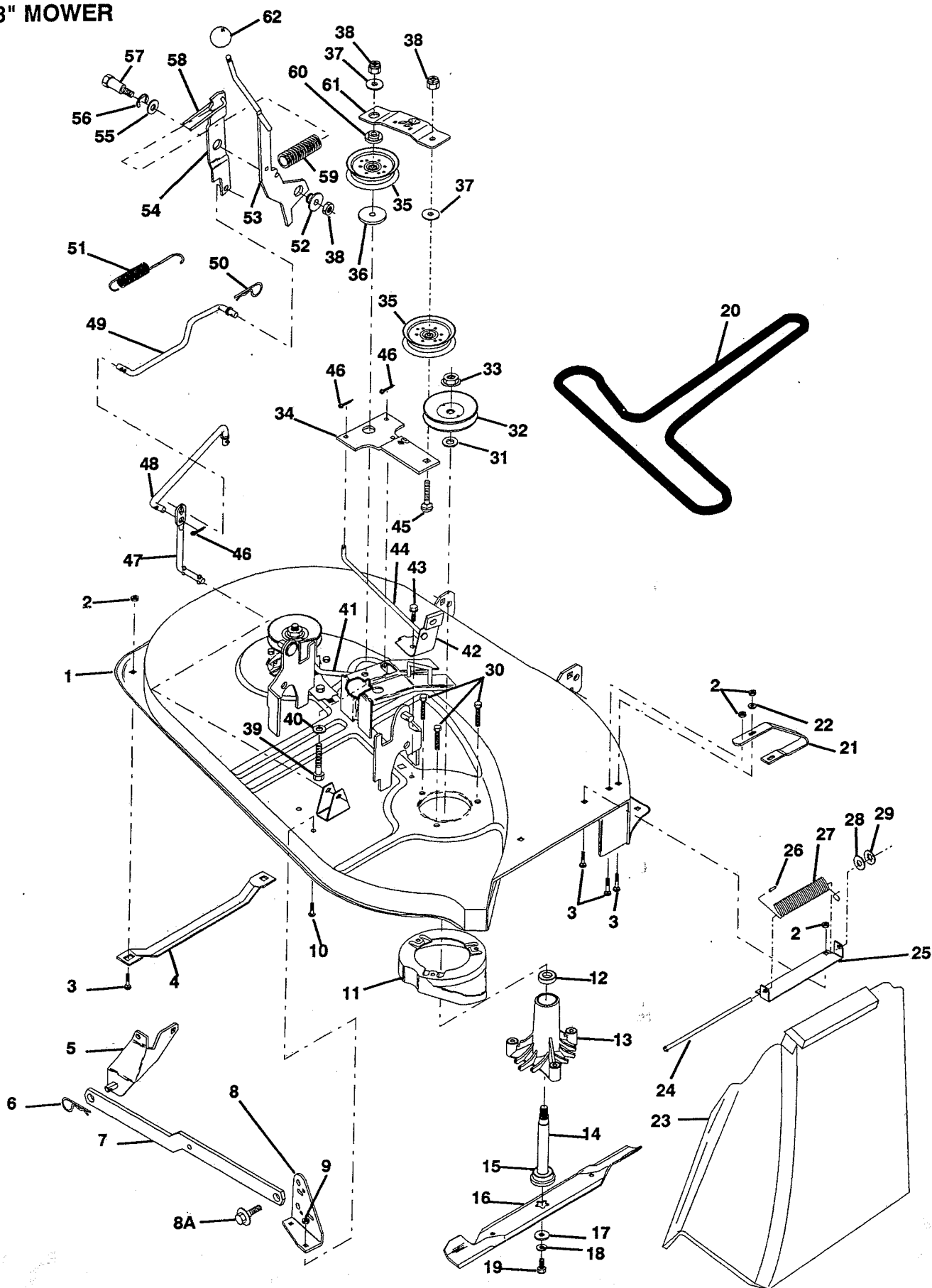
KEY NO.	PART NO.	DESCRIPTION
11	532134619	Link Lift LH Fixed Length
12	532135388	Link Lift RH Fixed Length
13	532124670	Retainer Spring
14	532135563	Pin Roll SLT 5/16 X 1 25 Blk O
15	532127218	Link Front
16	873350800	Nut Jam Hex 1/2-13 Unc
17	532130171	Trunnion Blk Zinc
18	873800800	Nut Lock W/wsh 1/2-13unc
19	532130832	Arm Suspension Rear
20	532124660	Retainer Spring

NOTE: All component dimensions given in U.S. inches.
1 inch = 25.4 mm

REPAIR PARTS

12 HP 38" RIDING LAWN TRACTOR - - MODEL NUMBER SK1238D

38" MOWER



REPAIR PARTS

12 HP 38" RIDING LAWN TRACTOR - - MODEL NUMBER SK1238D

38" MOWER

KEY NO.	PART NO.	DESCRIPTION
1	532129365	Mower Asm 38"welded
2	873680500	Nut Crown Lock 5/16-18
3	872140506	Bolt Rdhd Sqnk 5/16-18unc X3/4
4	532125074	Runner Mower LH 10 00
5	532138017	Bracket Asm Fr Sway Bar
6	532124670	Retainer Spring
7	532130832	Arm Suspension Rear
8	532138440	Bracket Asm Deck Sway Bar
8a	532132827	Bolt Shoulder
9	873800500	Locknut Hex W/Ins 5/16 - 18
10	872140506	Bolt Rdhd Sqnk 5/16 - 18 X 3/4
11	532136929	Stripper Mower Vented
12	532110485	Bearing Ball Mandrel
13	532128774	Housing Mandrel Vented
14	532133172	Shaft Asm W/lower Bearing
15	532129895	Bearing Ball #6204 (Mandrel)
16	532131322	Blade 38"euro
17	532129962	Washer Hard Blade Mower Vented
18	810030600	Washer Lock Hvy 3/8 Unplated
19	532850857	Bolt 3/8 24 X 1-1/4 Gr 8 Patched
20	532131290	V-Belt Mower 88 12 Black 38"
21	532128772	Runner RH 38"
22	819111216	Washer 11/32 X 3/4 X 16 Ga
23	532106736	Shield Deflector Mower 38"blk
24	532106735	Rod Hinge Brt/blk Zinc 9 88 Lg
25	532137607	Bracket Deflector
26	532105304	Cap Sleeve 80x 112 Blk Mower
27	532106734	Spring Deflector 4 46 Blk
28	819111016	Washer 11/32 X 5/8 X 16 Ga
29	532110452	Nut Push Phos & Oil
30	532078158	Bolt 5/16-18 X 1 25 T/t
31	532129963	Washer Spacer Mower Vented
32	532129206	Pulley Mandrel 38" Single

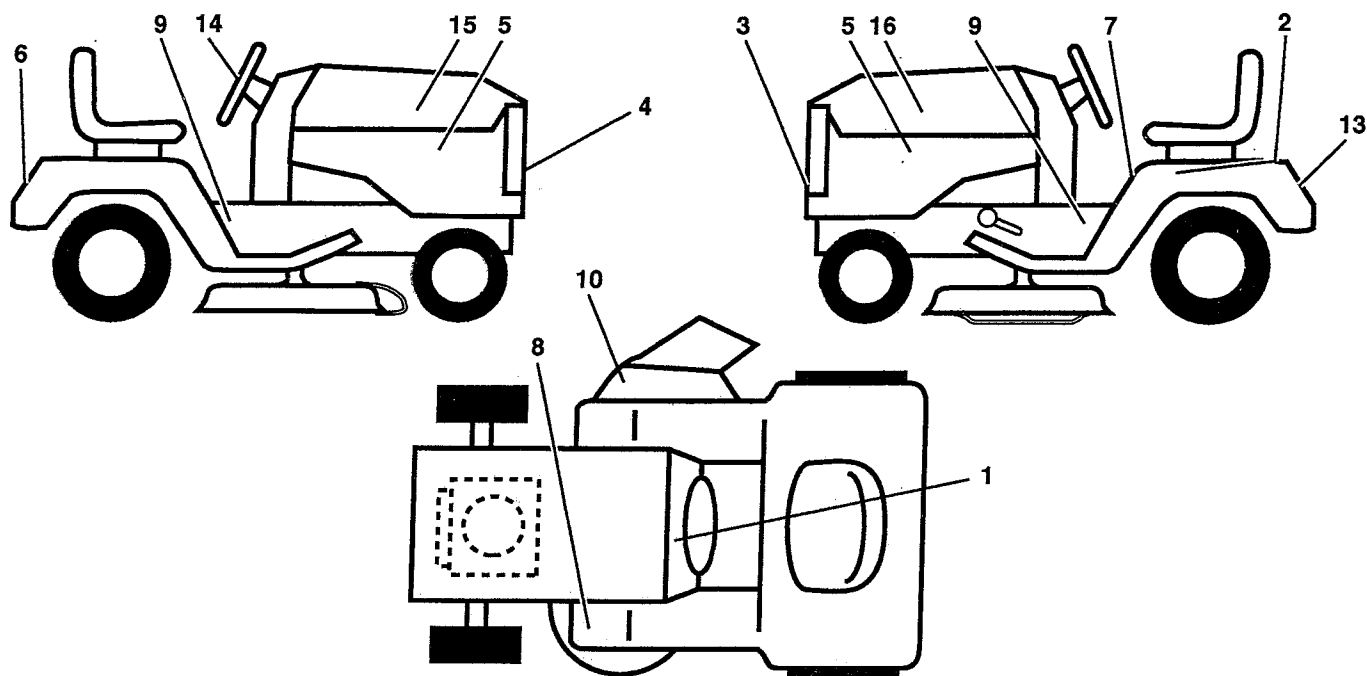
KEY NO.	PART NO.	DESCRIPTION
33	87350900	Nut 9/16 Top Lock Fling Oil Dip
34	532133840	Arm Idler 38"
35	532131494	Pulley Idler Flat 3 060
36	532122052	Spacer Retainer Pm Mower
37	819131612	Washer 13/32 X 1 X 12 Ga
38	873680600	Nut Crownlock 3/8-16 Unc
39	874600636	Bolt Hex 3/8-16 X 2-1/4
40	819131612	Washer 13/32 X 1 X 12 Ga
41	532131289	Rod Brake Mandrel LH 4 856
42	532130840	Brake Asm Mower Vented
43	817490512	Screw Thdrol 5/16-18 X 3/4 TYT
44	532131288	Rod Brake Mandrel RH 10 744
45	872110614	Bolt Rdhd 3/8-16uncx1-3/4 Gr5
46	876020312	Pin Cotter 3/32 X 3/4 Cad
46	876020312	Pin Cotter 3/32 X 3/4 Cad
47	532133551	Rod Pivot W/nibs
48	532133504	Rod Clutch Secondary W/nibs
49	532134666	Rod Clutch Primary 38/42
50	532124788	Spring Retainer 1" Zinc/cad
51	532131870	Spring Return
52	532127498	Bushing 747 Od X 794 Lg Brass
53	532133573	Arm Asm Clutch Primary
54	532127847	Arm Clutch Secondary
55	532121748	Washer 25/32 X 1-5/8 X 16 Ga
56	812000029	Ring Klip #t5304-75
57	532128903	Bolt Shoulder 3/8-16 Unc 1 44
58	532127845	Keeper Spring 4 000
59	532128759	Spring Clutch Mower 2 750 Zinc
60	532133502	Spacer Arm Idler Upper Hdn 42"
61	532133503	Stiffener Arm Idler Upper 42"
62	532106932	Knob Rd 3/8-16 Plstc Thds Blk
-	532136253	Deck Serv 38 Mech Vent Euro
-	532130794	Mandrel Asm Service (Includes Key Nos. 12-15, 17-19, 31 and 33)

NOTE: All component dimensions given in U.S. inches.
1 inch = 25.4 mm

REPAIR PARTS

12 HP 38" RIDING LAWN TRACTOR - - MODEL NUMBER SK1238D

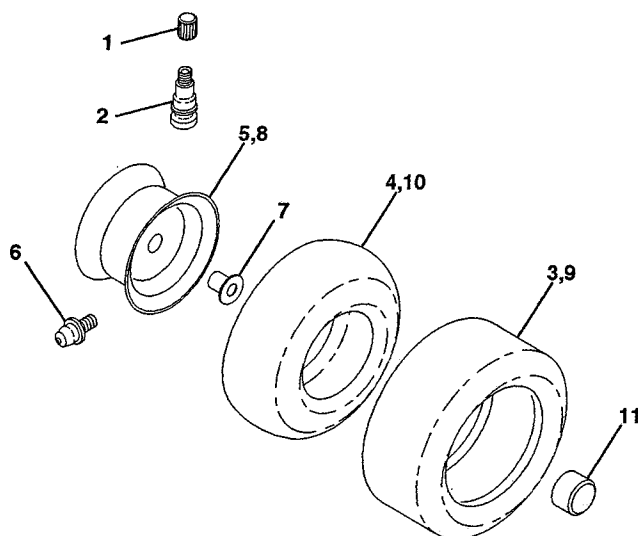
DECALS



KEY NO.	PART NO.	DESCRIPTION
1	532136795	Decal Instruction Dash Eng/fr
2	532121549	Decal Caut Bat Fr/Ger
3	532129559	Decal Grille Skandi
4	532124326	Decal Grille Stripe Yellow
5	532136082	Decal Hood 12HP 5sp
6	532129560	Decal Fender Skandi
7	532133795	Decal Caution Fender Eng/fr
8	532126676	Decal Brake/clutch S/fin/da/no
9	532127900	Decal Chassis 38"5sp
10	532137259	Decal Warning
13	532126187	Decal 100 DbA Cert Dutch/fre

KEY NO.	PART NO.	DESCRIPTION
14	532129561	Decal Strg Wheel Cap Skandi
15	532136352	Decal Hood Rh
16	532136351	Decal Hood Lh
-	532137297	Manual Parts
-	532138311	Decal Lift Handle (Lift Handle)
-	532136339	Manual Operators Scandi
Available accessories not included with tractor:		
--	CE38	Grass Catcher
--	LC05	Wheel Weighs
--	BD20	Snow Blade
--	SB20	Snow Blower
--	CH12	Tire Chains

WHEELS & TIRES



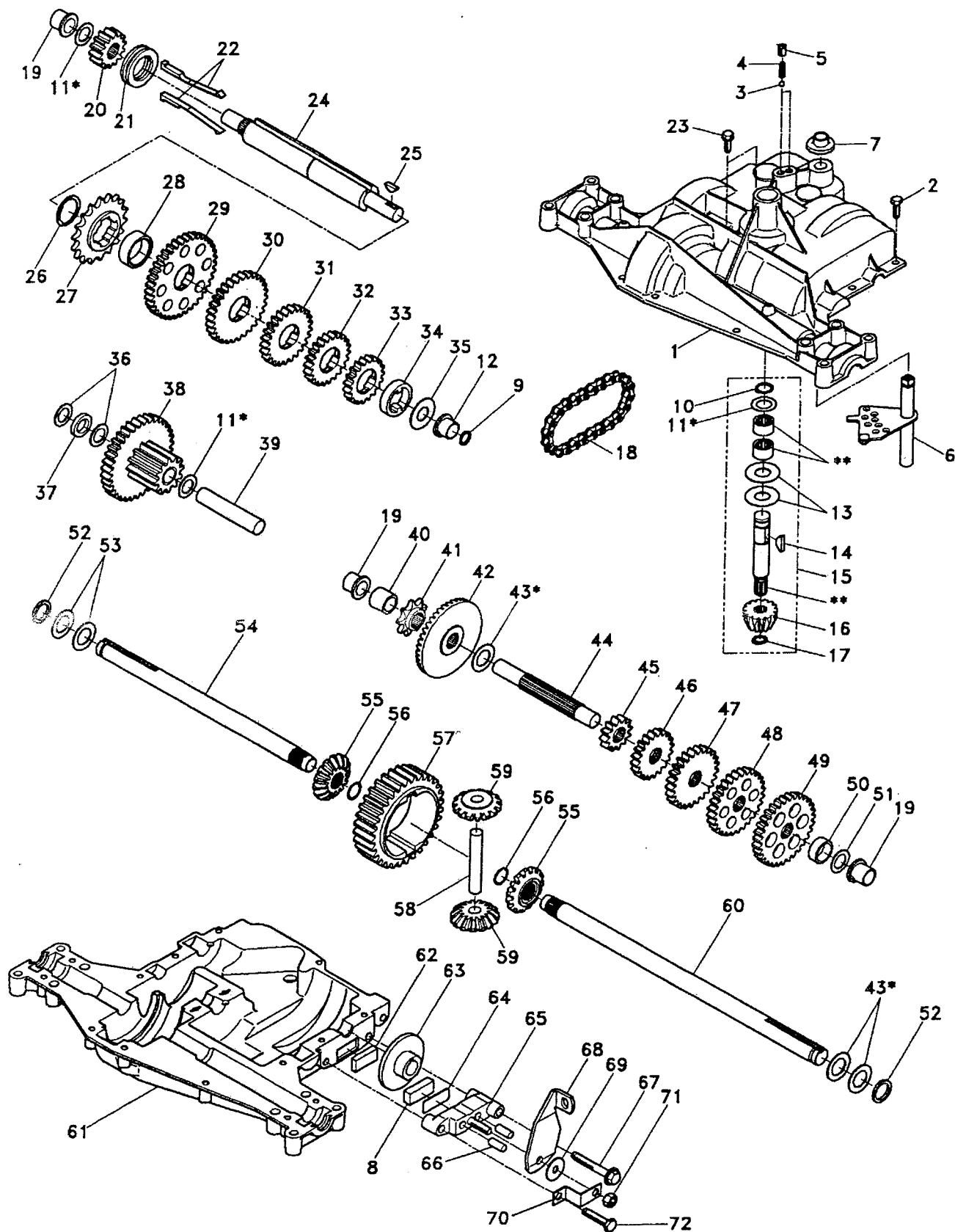
KEY NO.	PART NO.	DESCRIPTION
1	532059192	Cap Valve Tire
2	532065139	Stem Valve
3	532106222	Tire F Ts 15 X 6 0 - 6 Service
4	532059904	Tube Front (Service Item Only)
5	532125102	Rim Asm 6"front White Service
6	532124957	Fitting Grease (Front Wheel Only)
7	532124959	Bearing Flange (Front Wheel Only)
8	532124999	Rim Asm 8"rear White Service
9	532124635	Tire R Ts 18x8 5-8 C Service
10	532124926	Tube Rear (Service Item Only)
11	532104757	Cap Axle Blk 1 50 X 1 00

NOTE: All component dimensions given in U.S. inches.
1 inch = 25.4 mm

REPAIR PARTS

12 HP 38" RIDING LAWN TRACTOR - - MODEL NUMBER SK1238D

FOOTE/DANA TRANSAXLE - MODEL NUMBER 4360-47



REPAIR PARTS

12 HP 38" RIDING LAWN TRACTOR - - MODEL NUMBER SK1238D

FOOTE/DANA TRANSAXLE - MODEL NUMBER 4360-47

KEY PART NO. NO.	DESCRIPTION
1 532138248	Housing, Upper
2 532002274	Screw, Self-Tapping, Large 1/4-20 x .734
3 532134400	Ball, Detent
4 532105904	Spring, Detent
5 532105905	Screw, Set
6 532138235	Kit, Shifter Assembly
7 532134399	Boot, Shifter
8 873810500	Locknut 5/16-24
9 532138241	Square Ring
10 532002267	Ring, Retaining
11 532134793	* Assembly, Kit, Shim .625 Shaft
12 532138240	Bearing, Flange
13 532120415	Washer, Plain .632 x 1.38 x .046
14 532002257	Key, Woodruff, #9
15 532138234	Assembly, Kit, Input Shaft
16 532110078	Pinion, Bevel, 14 Teeth
17 532105909	Ring, Retaining
18 532105910	Chain, 24 Pitches
19 532105911	Bearing, Flange
20 532138242	Gear, Spur, 14 Teeth
21 532138246	Collar, Clutch
22 532138236	Assembly, Kit, Clutch Keys
23 532134791	Screw, Self-Tapping, with Sealer
24 532138243	Shaft, Intermediate
25 532002244	Key, Woodruff, #61
26 532105916	Ring, Retaining
27 532120470	Sprocket, 18 Teeth
28 532110070	Spacer
29 532108977	Gear, Spur, 37 Teeth
30 532120405	Gear, Spur, 30 Teeth
31 532108980	Gear, Spur, 25 Teeth
32 532134796	Gear, Spur, 19 Teeth
33 532138239	Spacer 1.133 x 1.50 x .750
34 532106596	Screw, Self-Tapping 5/16-18 x 1.40
35 532105925	Washer, Plain .640 x 1.37 x .061
36 532002232	Washer, Plain .632 x 1.00 x .026
37 532108978	Spacer .630 x 1.00 x .169
38 532110079	Assembly, Gear, Combination of 12 Teeth and 35 Teeth

KEY PART NO. NO.	DESCRIPTION
39 532124639	Shaft, Idler
40 532120472	Spacer .635 x .875 x .755
41 532105928	Sprocket 9 Teeth
42 532110084	Gear, Bevel, 42 Teeth
43 532134394	* Assembly, Kit, Shim, .750 Shaft
44 532120473	Shaft, Drive
45 532105933	Gear, Spur, 12 Teeth
46 532120407	Gear, Spur, 20 Teeth
47 532106589	Gear, Spur, 25 Teeth
48 532105937	Gear, Spur, 31 Teeth
49 532120523	Spacer .781 x 1.00 x .750
50 532120951	Puck, Friction
51 532002226	Washer, Plain .632 x 1.00 x .060
52 532134401	Washer, Neoprene
53 532002264	Washer, Plain .758 x 1.25 x .031
54 532120474	Axle, L.H.
55 532110081	Gear, Miter, 15 Teeth
56 532105941	Ring, Retaining
57 532110071	Gear, Spur, 32 Teeth
58 532120952	Shaft, Cross
59 532110082	Gear, Miter, 15 Teeth
60 532120475	Axle, R.H.
61 532138247	Housing, Lower
62 532120961	Puck, Friction
63 532007294	Disc, Brake
64 532108989	Spacer
65 532120953	Jaw, Brake
66 532120954	Pin, Dowel
67 532134799	Screw, Self-Tapping 5/16-18 x 2.25
68 532138244	Lever, Actuating
69 532108996	Washer, Plain .321 x 1.00 x .055
70 532120956	Bracket, Anti-Rotation
71 532120416	Grease

* Use in combinations to maintain proper clearances

** Order Key Number 15

NOTE: All component dimensions given in U.S. inches
1 inch = 25.4 mm