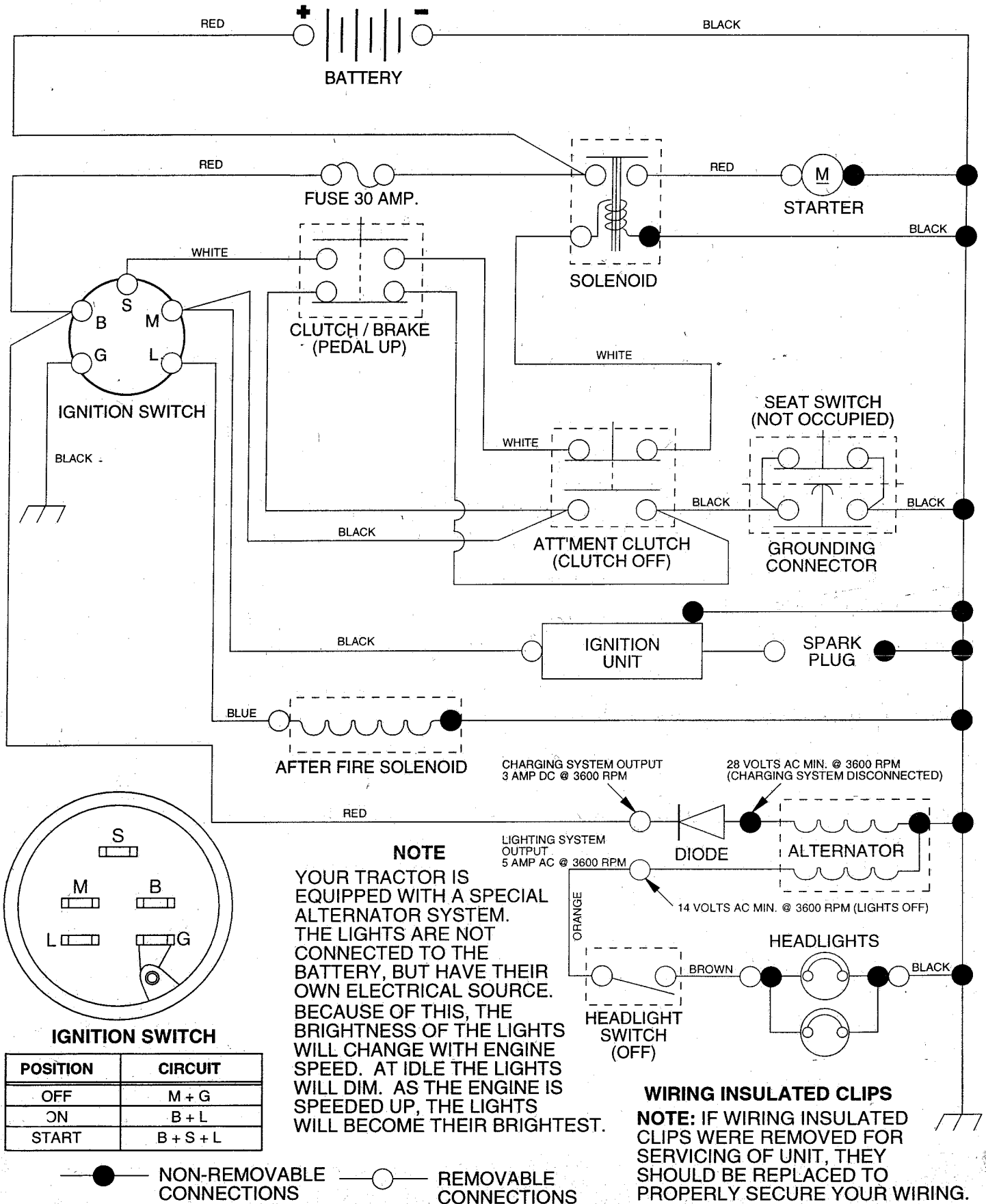


TRACTOR - - MODEL NUMBER UM15H42F

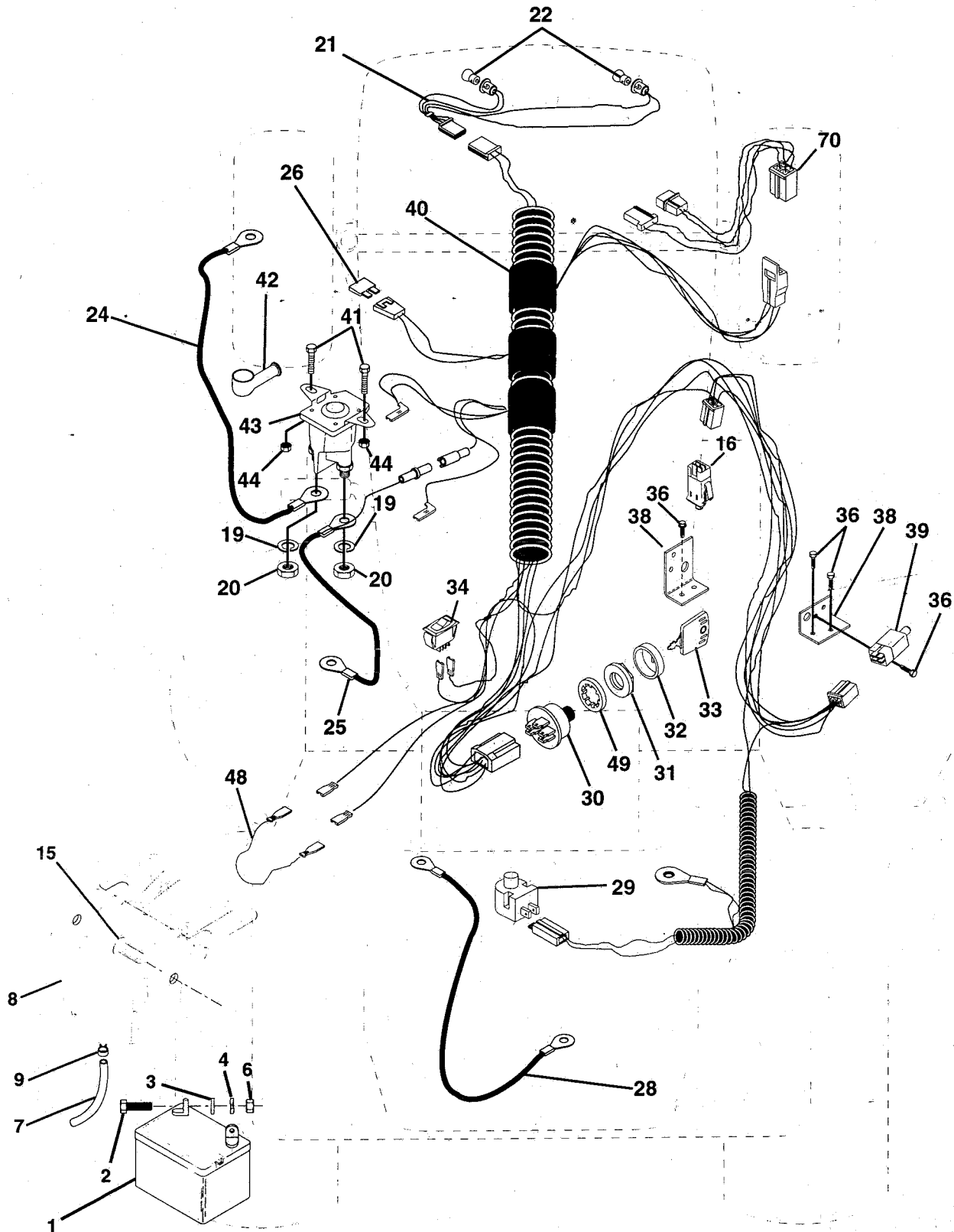
SCHEMATIC



REPAIR PARTS

TRACTOR -- MODEL NUMBER UM15H42F

ELECTRICAL



REPAIR PARTS

TRACTOR - - MODEL NUMBER UM15H42F

ELECTRICAL

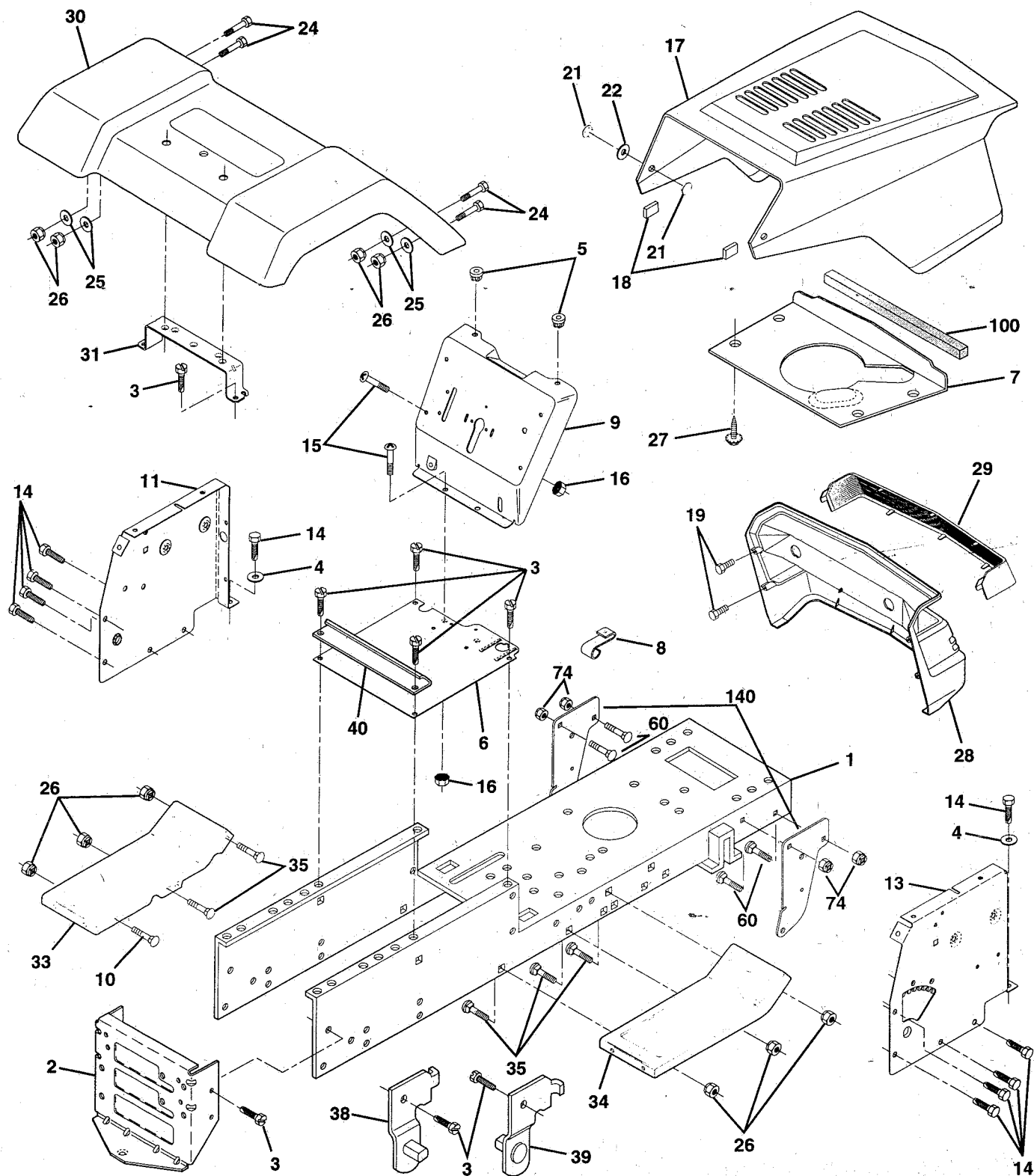
KEY NO.	PART NO.	DESCRIPTION
1	146139	Battery 12 Volt 25 Amp
2	74760412	Bolt Hex Hd 1/4-20unc X 3/4
3	19091016	Washer 9/32 X 5/8 X 16 Ga
4	10040400	Washer Lock Hvy Helical 1/4
6	73220400	Nut Fin Hex 1/4-20 Unc
7	109238X	Tube Plastic 12"
8	144940	Case Battery
9	109596X	Clamp Hose Olive
15	147688	Fastner Snap-In
16	153664	Switch Interlock Push-In
19	10090400	Washer Lock 1/4
20	73350400	Nut Jam Hex 1/4-20 Unc
21	136850	Harness Asm Light W/4152J
22	4152J	Bulb Light #1156
24	4799J	Cable Battery 6 Ga 11"red
25	146147	Cable Battery 6 Ga 44" w/16 wire red
26	108824X	Fuse 30 AMP Auto Green
28	4207J	Cable Ground 6 Ga 12" black
29	121305X	Switch Plunger Nc Gray
30	144921	Switch Ign 3
31	140400	Nut Ignition
32	141226	Cover Sw Ignition
33	140401	Key Ign
34	110712X	Switch Light Blk Blk Red
36	17021008	Screw Tap Hex #10-24unc X 1/2
38	140336	Bracket Switch Interlock
39	109553X	Switch Intlk Clutch Gry 4 Term
40	146057	Harness Ign
41	71110408	Bolt Blk Fin Hex 1/4-20 x 1/2
42	131563	Cover Terminal Red
43	145673	Solenoid
44	73640400	Nut Keps Hex 1/4-20 Unc
48	140844	Adapter Ammeter Rectangular
70	140422	Harness Eng Briggs/Tec Dual

NOTE: All component dimensions give in U.S. inches
1 inch = 25.4 mm.

REPAIR PARTS

TRACTOR - - MODEL NUMBER UM15H42F

CHASSIS AND ENCLOSURES



REPAIR PARTS

TRACTOR - - MODEL NUMBER UM15H42F

CHASSIS AND ENCLOSURES

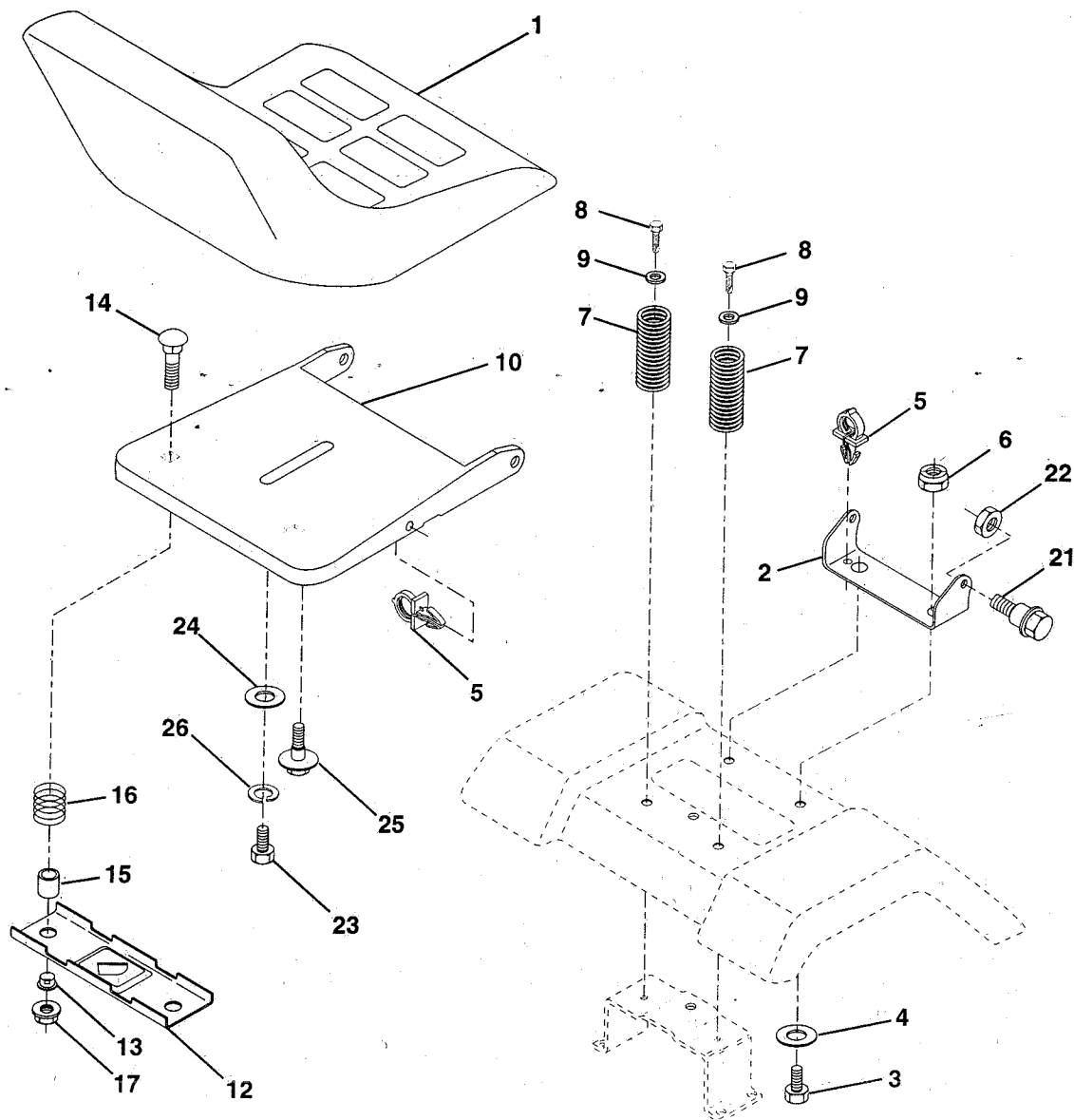
KEY NO.	PART NO.	DESCRIPTION
1	151169	Chassis Wldmt 11" Ga
2	140356	Drawbar
3	17490612	Screw Thdrol 3/8-16x3/4 Ty-tt
4	19131216	Washer 13/32 X 3/4 X 16 Ga
5	146077	Bumper Snap-In
6	145206	Saddle FD/SHF
7	126842X	Shield Ht. Hood Kohl/Dia Engine
8	126471X	Clip Insulator .406 Mtg. Hole
9	146757X011	Dash Slkscr 1-pc M NA N/c Sym
10	72140608	Bolt Carriage 3/8-16 x 1
11	146956	Panel Dash LH
13	146961X012	Panel Dash RH Slkscr
14	17490608	Screw Thdrol 3/8-16x1/2 Ty-tt
15	74180512	Screw Mach TRHD 5/16-18uncx 3/4
16	73510500	Nut Keps 5/16-18 Unc
17	134369X505	Hood Asm Pnt LT Slope
18	126938X	Bumper Hood
19	17411310	Screw Hex Wsh #13-16 Hi-Lo x 5/8
21	122933X	Rivet Ratchet Nylon
22	124479X	Washer Nylon Blk .28 x .75 x .19
24	74780616	Bolt Fin Hex 3/8-16unc X1 Gr. 5
25	19131312	Washer 13/32 X 13/16 X 12 Ga
26	73800600	Nut Lock Hex W/wsh 3/8-16 UNC
27	17030808	Screw Spiderloc Hex Hd #8 x 1/2
28	140137	Grille Black MS-428
29	124029X	Lens Grille HI Bar Clear LT
30	140001X505	Fender Pnt LT
31	139976	Bracket Support Fender
33	145244X505	Footrest Pnt LH Ms-505
34	145243X505	Footrest Pnt RH Ms-505
35	72110606	Bolt Rdhd Sht Sqnk 3/8-16 X3/4
38	139886	Bracket Asm Pvt42 LH MWR Rear
39	139887	Bracket Asm Pvt42 RH MWR Rear
40	139977	Spacer Fender Raised Lt
41	139978	Plate Extension Fender Lt
60	72140606	Bolt Rdhd Sqnk 3/8-16 x 3/4
61	19171416	Washer 17/32 x 7/8 x 16 Ga.
74	73680600	Nut Crownlock 3/8-16 UNC
100	105037X	Strip Foam 18"
140	150556	Bracket Chassis Front 7 Ga.
--	5479J	Plug Button Blk 359 Dia Choke

NOTE: All component dimensions are given in U.S. inches
1 inch = 25.4 mm.

REPAIR PARTS

TRACTOR - - MODEL NUMBER UM15H42F

SEAT ASSEMBLY



KEY NO.	PART NO.	DESCRIPTION
1	127428	Seat
2	140551	Bracket Pivot Seat
3	74760616	Bolt Hex 3/8 - 16 X 1
4	19131610	Washer 13/32 X 1"
5	145006	Clip Push-In
6	73800600	NuT, Lock Hex W/Wsh 3/8-16 Unc
7	124181X	Spring Seat Cprsn 2 250 Blk Zi
8	17490616	Screw Thdrol 3/8-16 X 1 Ty-tt
9	19131614	Washer 13/32 X 1 X 14 Ga
10	140552	Pan Seat
12	121246X	Bracket Mounting Switch
13	121248X	Bushing Snap Blk Nyl 50 Id

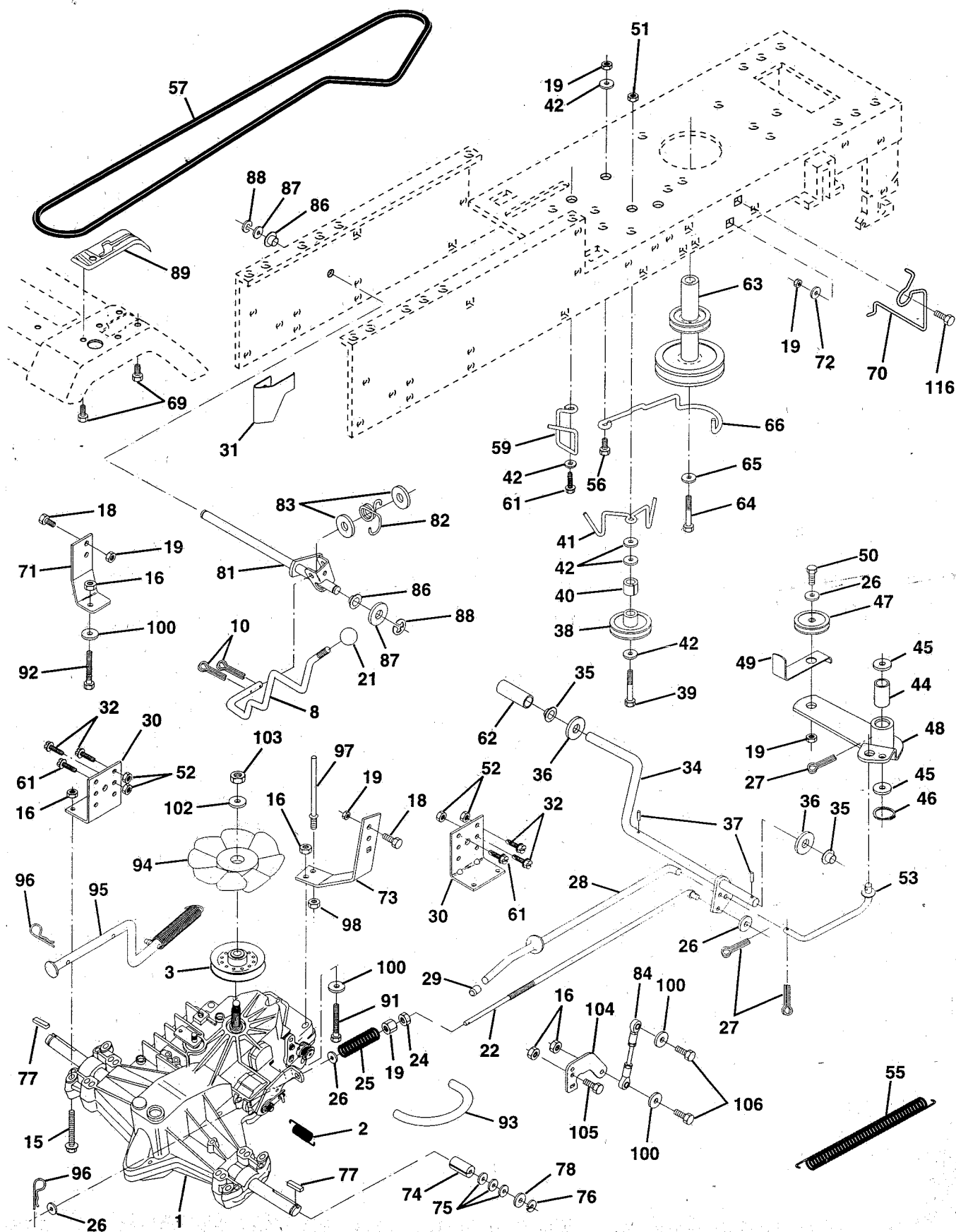
KEY NO.	PART NO.	DESCRIPTION
14	72050411	Bolt Rdhd Sht Nk 1/4-20x1-3/8
15	134300	Spacer Split 28x96 Zinc
16	121250X	Spring Cprsn
17	123976X	Nut Lock 1/4 Lge Flg Gr 5 Zinc
21	153236	Bolt Shoulder 5/16-18
22	73800500	Nut Lock Hex w/Ins 5/16-18 Unc
23	74780814	Bolt Fin Hex 1/2-13 X 7/8 Gr 5
24	19171912	Washer 17/32 X 1-3/16 X 12 Ga
25	127018X	Bolt Shoulder 5/16-18 X 62
26	10040800	Washer Lock Hvy Hlcl Spr 1/2

NOTE: All component dimensions given in U.S. inches
1 inch = 25.4 mm.

REPAIR PARTS

TRACTOR - - MODEL NUMBER UM15H42F

DRIVE



REPAIR PARTS

TRACTOR - - MODEL NUMBER UM15H42F

DRIVE

KEY NO.	PART NO.	DESCRIPTION
1	150071	Transaxle Assembly
2	142431	Spring, Return, Brake
3	143995	Pulley, Transaxle
8	141003	Rod Shift Hydro LT
10	76020416	Pin Cotter 1/8 x 1 CAD
15	74490544	Bolt Hex Flghd 5/16-18 Unc
16	73800500	Nut Lock Hex W/Ins 5/16-18 Unc P
18	74780616	Bolt Fin Hex 3/8-16 Unc x 1 Gr. 5
19	73800600	Nut Lock Hex W/Wsh 3/8-16 Unc
21	106933X	Knob, Rd. 1/2-13
22	145627	Rod, Brake Hydro
24	73350600	Nut
25	106888X	Spring, Brake Rod
26	19131316	Washer
27	76020412	Pin Cotter 1/8 x 3/4 CAD.
28	145204	Rod, Parking Brake
29	71673	Cap, Parking Brake
30	130807	Bracket, Transaxle
31	127275X	Keeper Belt Lh
32	74760512	Bolt Hex Hd 5/16-18 Unc x 3/4
34	151128	Shaft, Foot Pedal
35	120183X	Bearing, Nylon
36	19211616	Washer
37	1572H	Pin, Roll
38	123674X	Pulley, Idler, Flat
39	74760644	Bolt
40	4470J	Spacer, Split
41	153399	Keeper, Belt Retainer
42	19131312	Washer 13/32 x 13/16 x 12 Gauge
44	105706X	Bearing, Nylon
45	110812X	Washer, Hardened
46	12000039	Ring, Klip
47	127783	Pulley, Idler, V-Groove
48	123789X	Bellcrank Assembly
49	123205X	Retainer, Belt
50	74760624	Bolt
51	73680600	Nut Crownlock 3/8-16 Unc
52	73680500	Nut Crownlock 5/16-18 Unc
53	105710X	Link, Clutch
55	105709X	Spring, Return, Clutch
56	74760620	Bolt Fin Hex 3/8-16Unc x 1-1/4
57	140294	V-Belt, Ground Drive

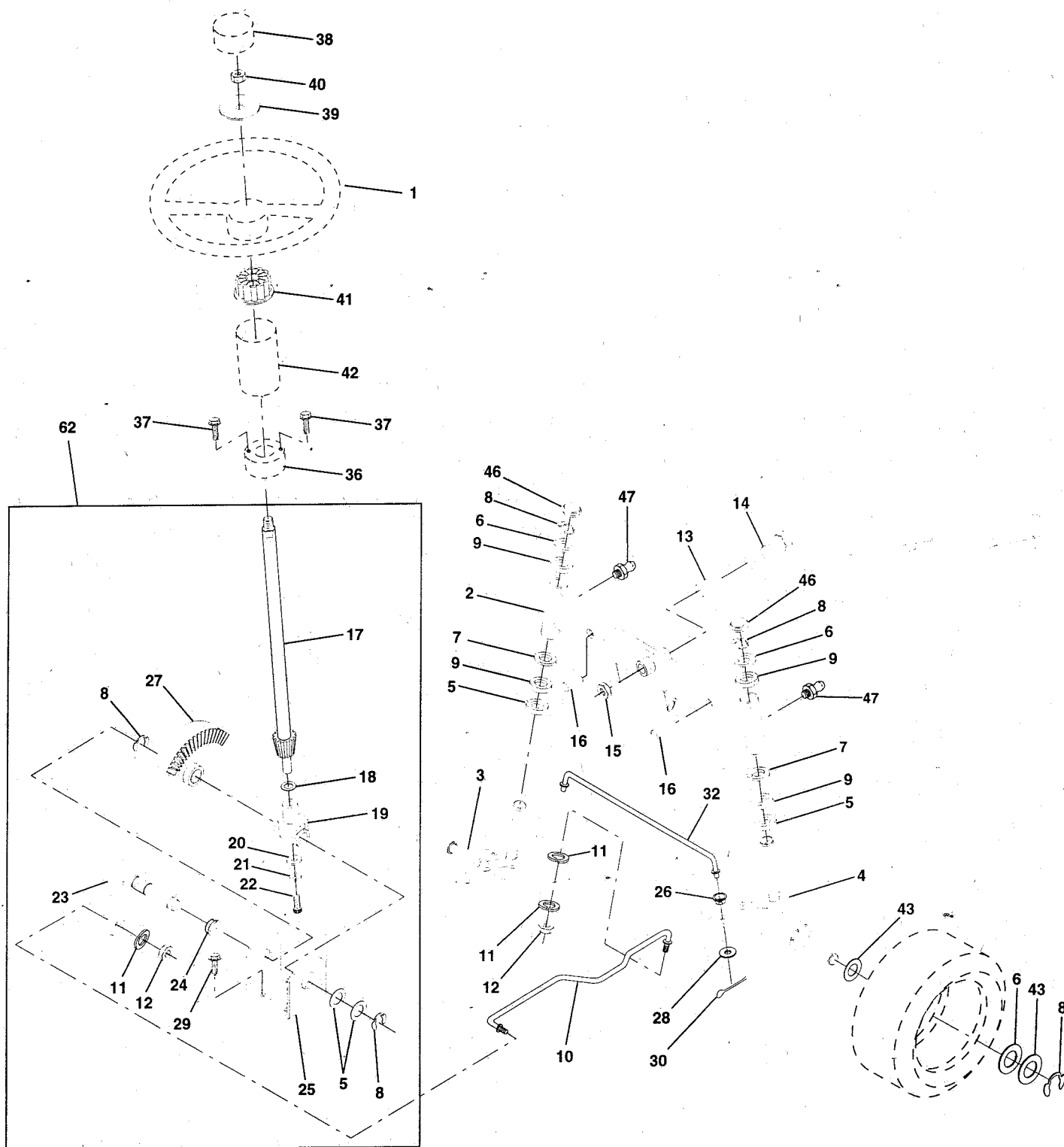
KEY NO.	PART NO.	DESCRIPTION
59	140312	Keeper, Center Span
61	17490612	Screw Thdrol. 3/8-16 x 3/4 Ty. TT
62	8883R	Cover, Pedal
63	140186	Pulley, Engine
64	71170764	Bolt, Hex
65	10040700	Washer
66	153400	Keeper Belt Engine
69	142432	Screw
70	134683	Keeper Belt Engine
71	140158	Strap Torque Lh Hydro 18/20" T
72	19132012	Washer 13/32 x 1-1/4 x 12 Gauge
73	140157	Strap Torque Rh Hydro 18/20" T
74	121199X	Spacer, Split
75	121749X	Washer 25/32 x 1-1/4 x 16 Gauge
76	12000001	E-Ring
77	123583X	Key, Square
78	121748X	Washer 25/32 x 1-5/8 x 16 Gauge
81	140154	Shaft Asm. Cross Hydro 20" Tires
82	123782X	Spring Torsion T/A
83	19171216	Washer 17/32 x 3/4 x 16 Ga.
84	140548	Rod, Tie Hydro 20" Tires
86	71208	Bushing Rod Strig. 629/632 ID
87	19212016	Washer 21/32 x 1-1/4 x 16 Ga.
88	12000008	Ring Klip #5304-62
89	151147	Console, Shift
91	74780536	Bolt Fin Hex 5/16-18 x 2-1/4
92	74780524	Bolt Fin Hex 5/6-18 Unc x 1-1/2
93	142564	Line Fuel Hydro 4"
94	140462	Fan, Hydro 7"
95	144643	Control, Asm. Bypass Hydro
96	4497H	Retainer Spring 1" Zinc/Cad
97	140469	Keeper Belt Rh Hydro 0750. 18/20"
98	73510600	Nut Keps Hex 3/8-16 Unc
100	19111216	Washer 11/32 x 3/4 x 16 Ga.
102	141322	Washer Bellville .501D x 1.50D
103	73940800	Nut Hex Jam Toplock 1/2-20 Unf
104	140156	Arm, Control Hydro
105	71070516	Screw Cap Hex 5/16 x 18 x 1
106	74780520	Bolt Fin Hex 5/16-18 Unc x 1-1/4
116	72110610	Bolt Rdhd Sq Neck 3/8-16 x 1.25

NOTE: All component dimensions give in U.S. inches.
1 inch = 25.4 mm.

REPAIR PARTS

TRACTOR - - MODEL NUMBER UM15H42F

STEERING ASSEMBLY



REPAIR PARTS

TRACTOR - - MODEL NUMBER UM15H42F

STEERING ASSEMBLY

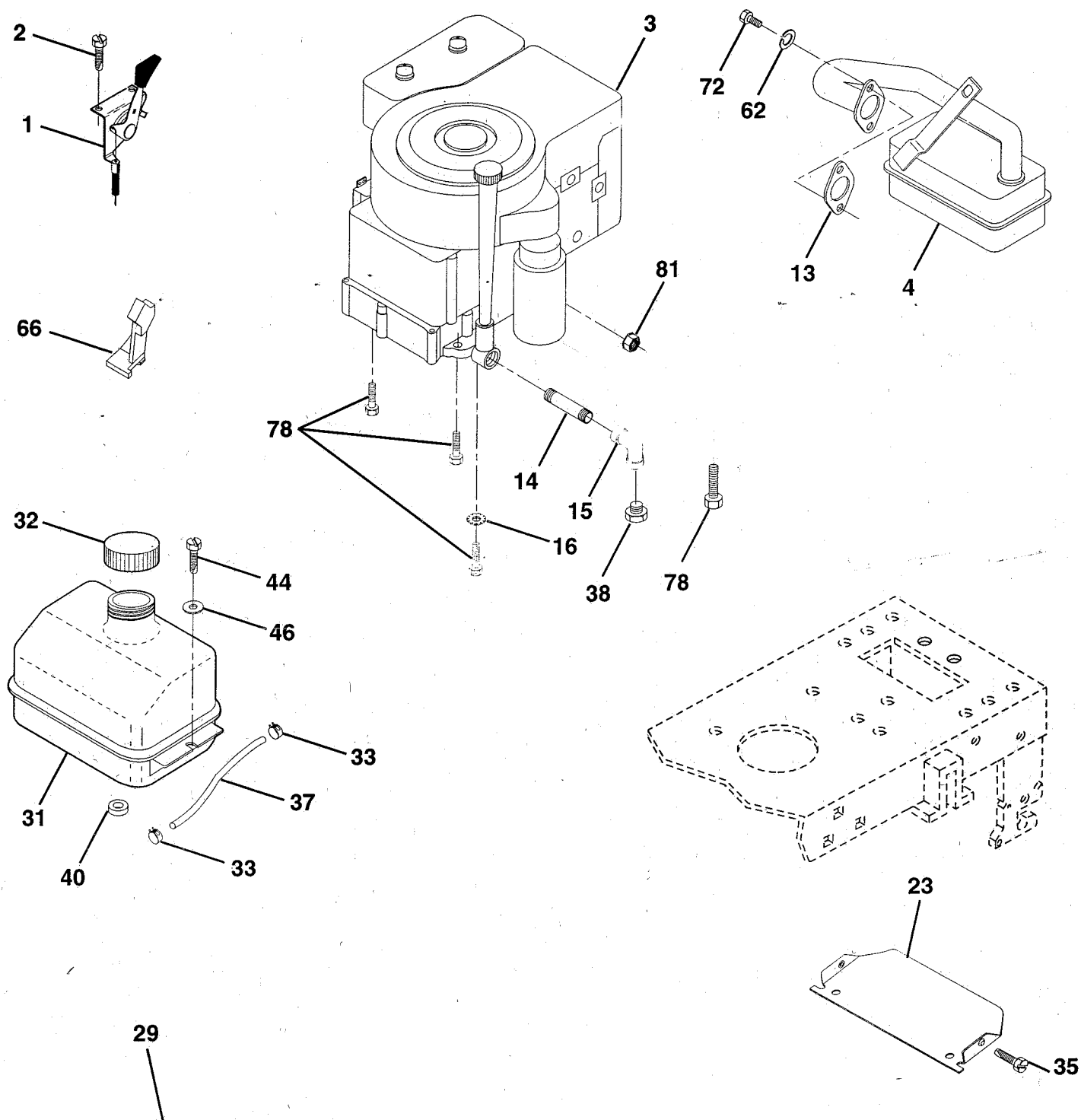
KEY NO.	PART NO.	DESCRIPTION
1	133741	Wheel Steering Ayp/kelch Blk
2	142033	Axle Asm Fr LT W/gzks 38/42
3	135227	Spindle Asm LH
4	135228	Spindle Asm RH
5	6266H	Bearing Race Thrust Harden
6	121748X	Washer 25/32 X 1-5/8 X 16 Ga
7	19272016	Washer 27/32 X 1-1/4 X 16 Ga
8	12000029	Ring Klip #t5304-75
9	3366R	Bearing Col Strg Blk
10	130468	Link Drag Sol Ball Jt 20 064
11	10040600	Washer Lock Hvy Hlcl Spr 3/8
12	73610600	Nut Fin Hex 3/8-24 Unf
13	110438X	Spacer Bearing Axle Front
14	74011056	Bolt Hex 5/8-11 Unc X 3-1/2
15	73901000	Nut Lock Flange 5/8-11 Unc
16	132624	Pin Axle 5/8 X 1 55/1 54 Lg
17	132614	Shaft Asm Strg 5/8 X 15 19 LT
18	57079	Washer Thrust 515x 750x 033
19	124035X	Support Shaft
20	126684X	Washer Shim 1/4 X 5/8 X 062
21	10040400	Washer Lock Hvy Helical 1/4
22	71100410	Screw Cap Sckt Hd Phos
23	127501	Shaft Asm Pittman
24	109816X	Nyliner Snap In
25	124036X	Bracket Steering
26	126847X	Bushing Link Drag Blk LR
27	136874	Gear Sector
28	19131416	Washer 13/32 X 7/8 X 16 Ga
29	17490612	Screw Thdrol 3/8-16x3/4 Ty-tt
30	76020412	Pin Cotter 1/8 X 3/4 Cad
32	130465	Rod Tie Wire Form 19 75 Mech
36	132196	Bushing Strg 5/8 Id Dash
37	152927	Screw #10-32 x 1/2 x 3/8 Flange
38	133742	Cap Wheel Steer Ayp/kelch Blk
39	19133808	Washer 13/32 X 2-3/8 X 8 Ga
40	7810H	Nut Lock Center 3/8-24unf
41	104820X	Adaptor Wheel Strg 640/ 635id
42	124418X	Boot Steering Shaft
43	121749X	Washer 25/32 X 1 1/4 X 16 Ga
46	121232X	Cap Spindle Fr Top Blk
47	6855M	Fitting Grease
62	149684	Kit Steering Assembly Service

NOTE: All component dimensions given in U.S. inches.
1 inch = 25.4 mm.

REPAIR PARTS

TRACTOR - - MODEL NUMBER UM15H42F

ENGINE



OPTIONAL EQUIPMENT
Spark Arrester

REPAIR PARTS

TRACTOR - - MODEL NUMBER UM15H42F

ENGINE

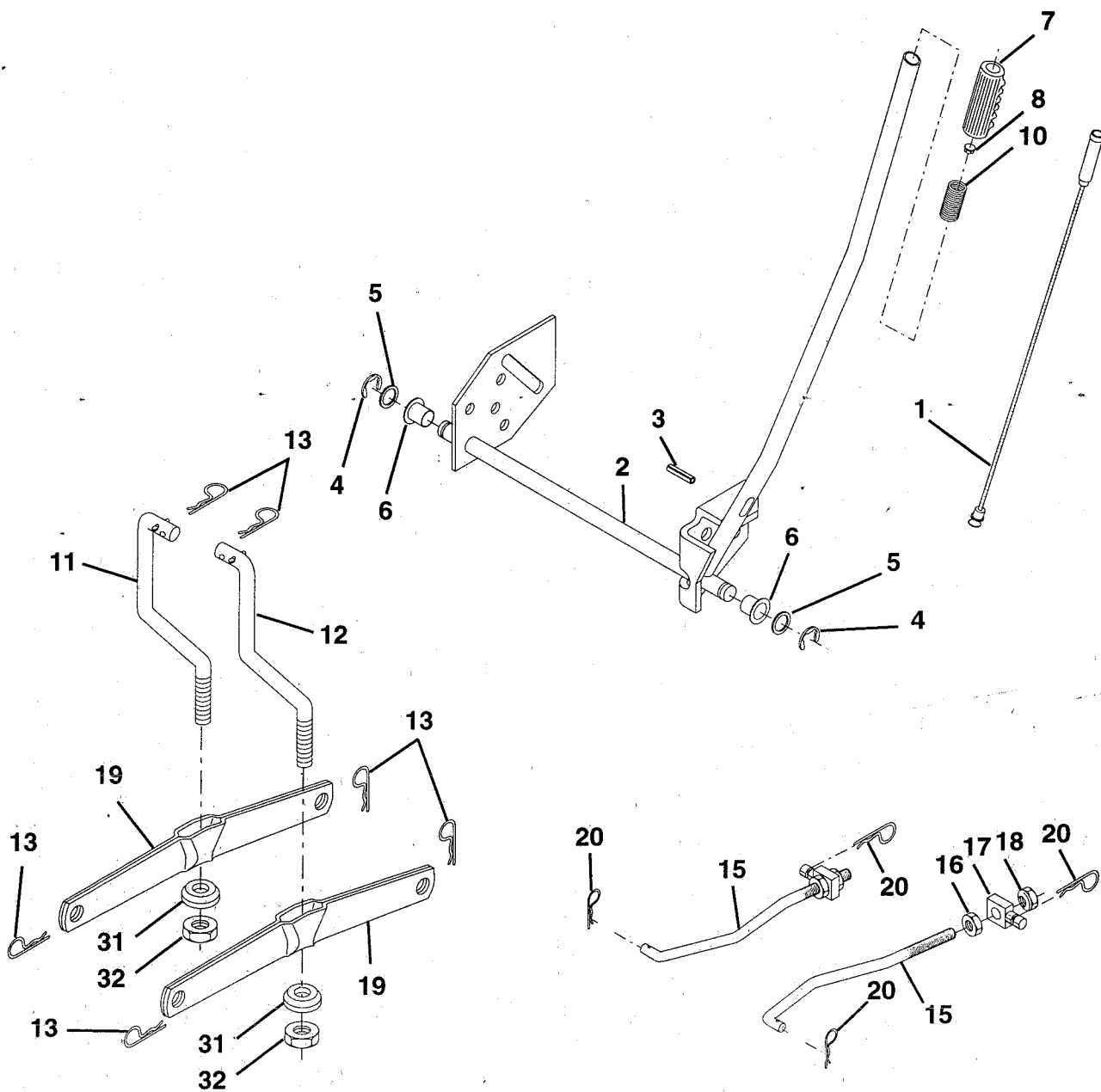
KEY NO.	PART NO.	DESCRIPTION
1	132623	Control Th/ch Blk Tee EEC 15 10
2	17720410	Screw Hex Thd Cut 1/4-20x5/8 T
3	-----	Engine B&S 15.0 Model No. 28N707
4	137352	Muffler Exhaust B&S
13	272293	Gasket Eng 1 313 Id Tin Plated
14	13280324	Nipple Pipe 3/8 Npt X 3"
15	13200300	Elbow Std 90 Degree 3/8-18 Npt
16	11050600	Washer Lock Ext Tooth 3/8
23	150554	Shield Browning
29	137180	Kit Spark Arrestor (Flat Scrm)
31	109202X	Tank Fuel Front 1 25
32	140527	Cap Asm Fuel
33	123487X	Clamp Hose Blk
35	17490512	Screw Thdrol 5/16-18 x 3/4 TYT
37	137040	Line Fuel
38	-----	Plug Oil Drain (Order From Engine Manufacturer)
40	124028X	Bushing Snap Nyl Blk Fuel Line
44	17490412	Screw Hexwsh Thdrol 1/4-20x3/4
46	19091416	Washer 9/32 X 7/8 X 16 Ga
62	10040500	Washer 5/16
66	127951	Stop Throttle 3000 RPM
72	71070512	Screw 5.16-18 x 3/4
78	17490620	Screw Thdrol 3/8-16x1-1/4 TYTT
81	128861	Nut Flange 1/4-20 Starter Nut

NOTE: All component dimensions given in U.S. inches.
1 inch = 25.4 mm.

REPAIR PARTS

TRACTOR - - MODEL NUMBER UM15H42F

LIFT



KEY NO.	PART NO.	DESCRIPTION
1	136973	Wire Asm Inner w/plunger
2	122507X	Shaft Asm Lift 9 680
3	105767X	Pin Groove 1 500 Zinc
4	12000002	E Ring #5133-62
5	19211621	Washer PLTD 21/32 X 1 X 21ga
6	120183X	Bearing Nylon Blk 629 Id
7	109413X	Grip Handle Bicycle Matte Blk
8	124526X	Button Plunger Black
10	122512X	Spring Cprsn 3 750 Oiled
11	139865	Link Lift LH
12	139866	Link Lift RH

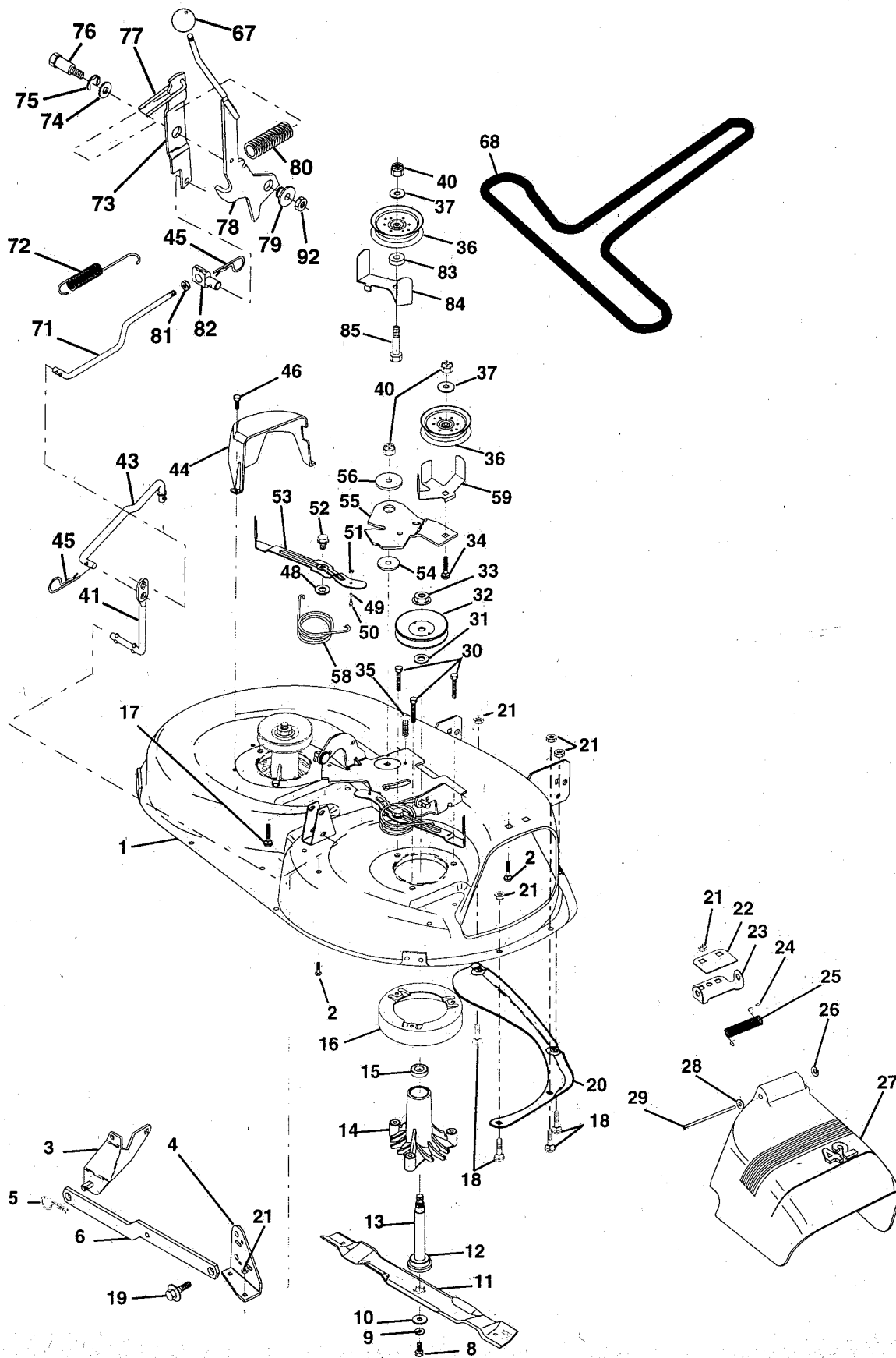
KEY NO.	PART NO.	DESCRIPTION
13	4939M	Retainer Spring
15	127218	Link Front
16	73350800	Nut Jam Hex 1/2-13 Unc
17	130171	Trunnion Blk Zinc
18	73800800	Nut Lock W/wsh 1/2-13unc
19	139868	Arm Suspension
20	3146R	Retainer Spring
31	140302	Bearing Pvt. Lift. Spherical
32	73540600	Nut Crownlock 3/8-24

NOTE: All component dimensions given in U.S. inches
1 inch = 25.4 mm

REPAIR PARTS

TRACTOR - - MODEL NUMBER UM15H42F

MOWER DECK



REPAIR PARTS

TRACTOR - - MODEL NUMBER UM15H42F

MOWER DECK

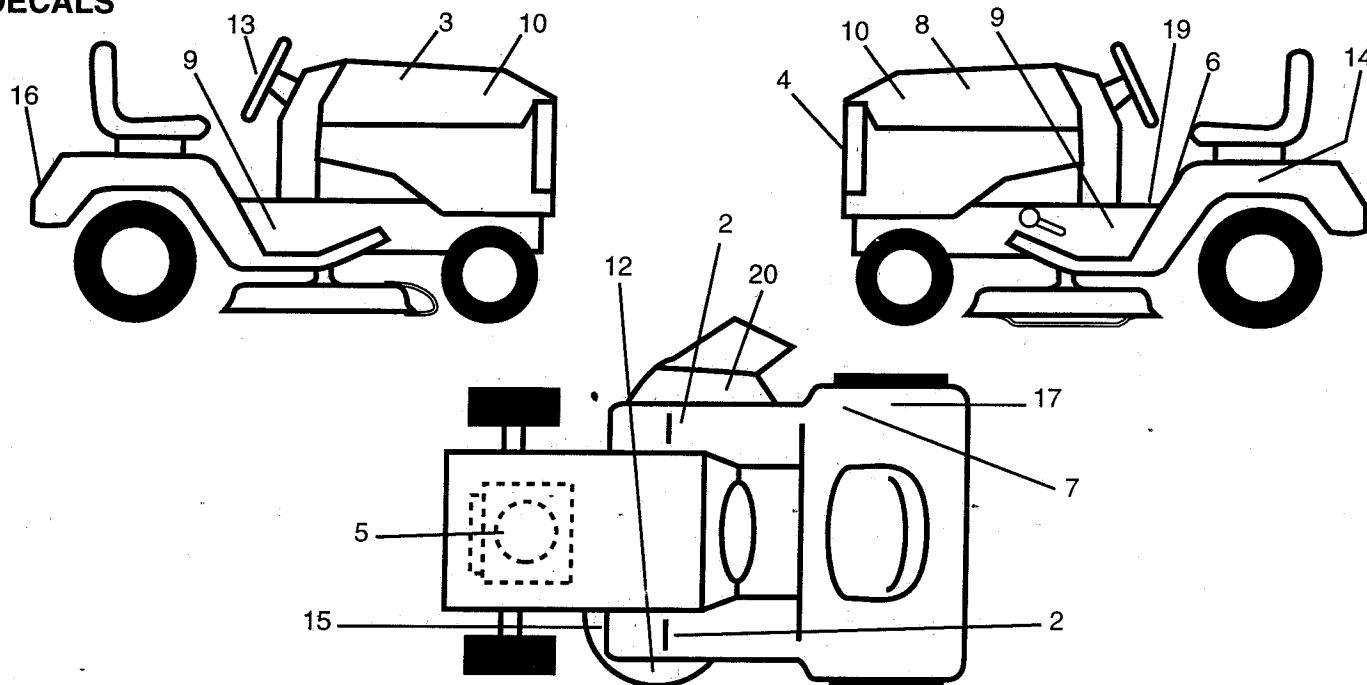
KEY NO.	PART NO.	DESCRIPTION	KEY NO.	PART NO.	DESCRIPTION
1	144393	Mower Deck Assembly, 42"	41	133551	Rod, Pivot, with Nibs
2	72140506	Bolt	43	140083	Rod, Clutch, Secondary, with Nibs
3	138017	Bracket Asm Fr. Sway Bar	44	140088	Guard, Mandrel, LH
4	138440	Bracket Asm Deck 42" Sway Bar	45	4497H	Retainer
5	4939M	Retainer Spring	46	137729	Screw, Thread Roll 1/4-20 x 5/8
6	130832	Arm, Suspension, Rear	48	133944	Washer, Hardened
8	850857	Bolt 3/8-24 x 1.25 Grade 8	49	133940	Roller Assembly, Cam Follower
9	10030600	Washer, Lock	50	131340	Bolt, Shloulder #10-24 Grade 5
10	140296	Washer, Hardened	51	69180	Locknut
11	138498	Blade, High Lift 42"	52	139888	Bolt, Shoulder 5/16-18 UNC
12	129895	Bearing, Ball	53	131845	Arm Assembly, Pad, Brake
13	137645	Shaft Assembly, Mandrel, Vented (Includes Key Number 12)	54	133943	Washer, Hardened
14	128774	Housing, Mandrel, Vented	55	140084	Arm, Idler
15	110485X	Bearing, Ball, Mandrel	56	122052X	Spacer, Retainer
16	140329	Stripper, Vented Mower Deck	58	140086	Spring Torsion Brakes
17	72110610	Bolt, Carriage 3/8-16 x 1-1/4	59	141043	Guard Tuv Idler
18	72140505	Bolt, Carriage 5/16-18 x 5/8	67	106932X	Knob Rd 3/8-16 UNC
19	132827	Bolt, Shoulder	68	144200	V-Belt, 42" Mower
20	136888	Baffle, Vortex	71	142427	Rod, Clutch, Primary
21	73680500	Nut, Crownlock 5/16-18 UNC	72	131870	Spring, Extension, Return
22	134753	Stiffener Bracket	73	127847	Arm, Clutch, Secondary
23	131267	Bracket, Deflector	74	121748X	Washer 25/32 x 1-5/8 x 16 Gauge
24	105304X	Cap, Sleeve	75	12000029	Ring, Klip
25	123713X	Spring, Torsion, Deflector	76	128903	Bolt, Shoulder 3/8-16 UNC x 1.44
26	110452X	Nut, Push	77	127845	Keeper, Spring
27	130968	Shield Deflector Mower 42" Blk	78	140334	Arm, Clutch, Primary
28	19111016	Washer 11/32 x 5/8 x 16 Gauge	79	127498	Bushing, Large, Brass
29	131491	Rod, Hinge	80	128759	Spring, Mower Clutch
30	138776	Screw Thdrol. Hex Head Zinc	81	73350600	Nut Hex Jam 3/8-16 UNC
31	129963	Washer, Spacer	82	142028	Trunnion Adj.
32	153535	Pulley, Mandrel	83	120958X	Washer Sintered
33	137266	Nut, Toplock 9/16	84	144394	Keeper Belt Idler Fixed
34	72110614	Bolt	85	72140618	Bolt Carriage 3/8-16 x 2-1/4
35	133835	Fastener, Christmas Tree	92	73800600	Nut
36	131494	Pulley, Idler, Flat	--	130794	Mandrel Assembly (Includes Key Numbers 8-10, 12-15, 31 and 33)
37	19131316	Washer 13/32 x 13/16 x 16 Ga.	--	144783	Mower Deck, Complete
39	19070718	Washer 7/32 x 7/16 x 16 Ga.			
40	73680600	Nut, Crownlock 3/8-16 UNC			

NOTE: All component dimensions given in U.S. inches
1 inch = 25.4 mm

REPAIR PARTS

TRACTOR - - MODEL NUMBER UM15H42F

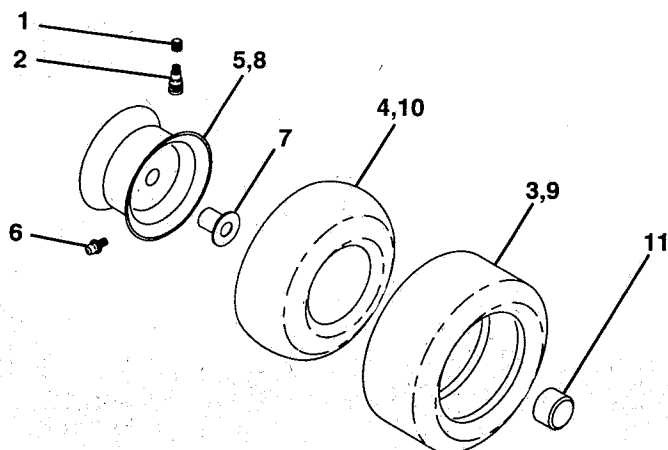
DECALS



KEY NO.	PART NO.	DESCRIPTION
2	131864	Decal Pad Footrest Abrasive
3	142308	Decal Hood RH
4	131265	Decal Lightbox Grille
5	273285	Decal Engine
6	145498	Decal Read Owners Manual Syms.
7	145437	Decal Europe Stand CE
8	142309	Decal Hood LH
9	141801	Decal Chassis 42" Hydro
10	142310	Decal Hood
12	135013	Decal Enviro Deck Yellow
13	127075	Decal Wheel Steering Rally
14	146451	Decal Bat Dan/Poi P/L Symbols
15	136832	Decal V-Belt Sch

KEY NO.	PART NO.	DESCRIPTION
16	132628	Decal Fender Rally
17	125690X	Decal 100 DBA
19	140837	Decal Brake Parking Saddle
20	145494	Decal Mower Cutting Symbol
--	138311	Decal Handle LFT Height Adj
--	142341	Decal Drawbar Cntl. Mut Hyd Lt
--	154129	Manual Parts
--	148866	Manual Oper
Available accessories not included with your tractor:		
	LBD48	48" Snow Blade
	C42	Grass Catcher
	LC05	33' Wheel Wts.
	LA018	Tire Chains
	LSB42	42" Snow Blower

WHEELS & TIRES



KEY NO.	PART NO.	DESCRIPTION
1	59192	Cap Valve Tire
2	65139	Stem Valve
3	106222X	Tire F Ts 15 X 6 0 - 6 Service
4	59904	Tube Front (Service Item Only)
5	106732X473	Rim Asm 6" (front Yellow Service)
6	278H	Fitting Grease (Front Wheel Only)
7	9040H	Bearing Flange (Front Wheel Only)
8	106108X473	Rim Asm 8" (rear Yellow Service)
9	122082X	Tire R Ts 20x10-8 C Service
10	7152J	Tube Rear (Service Item Only)
11	104757X	Cap Axle Blk 1 50 X 1 00
--	144334	Sealant, Tire (10 oz. Tube)

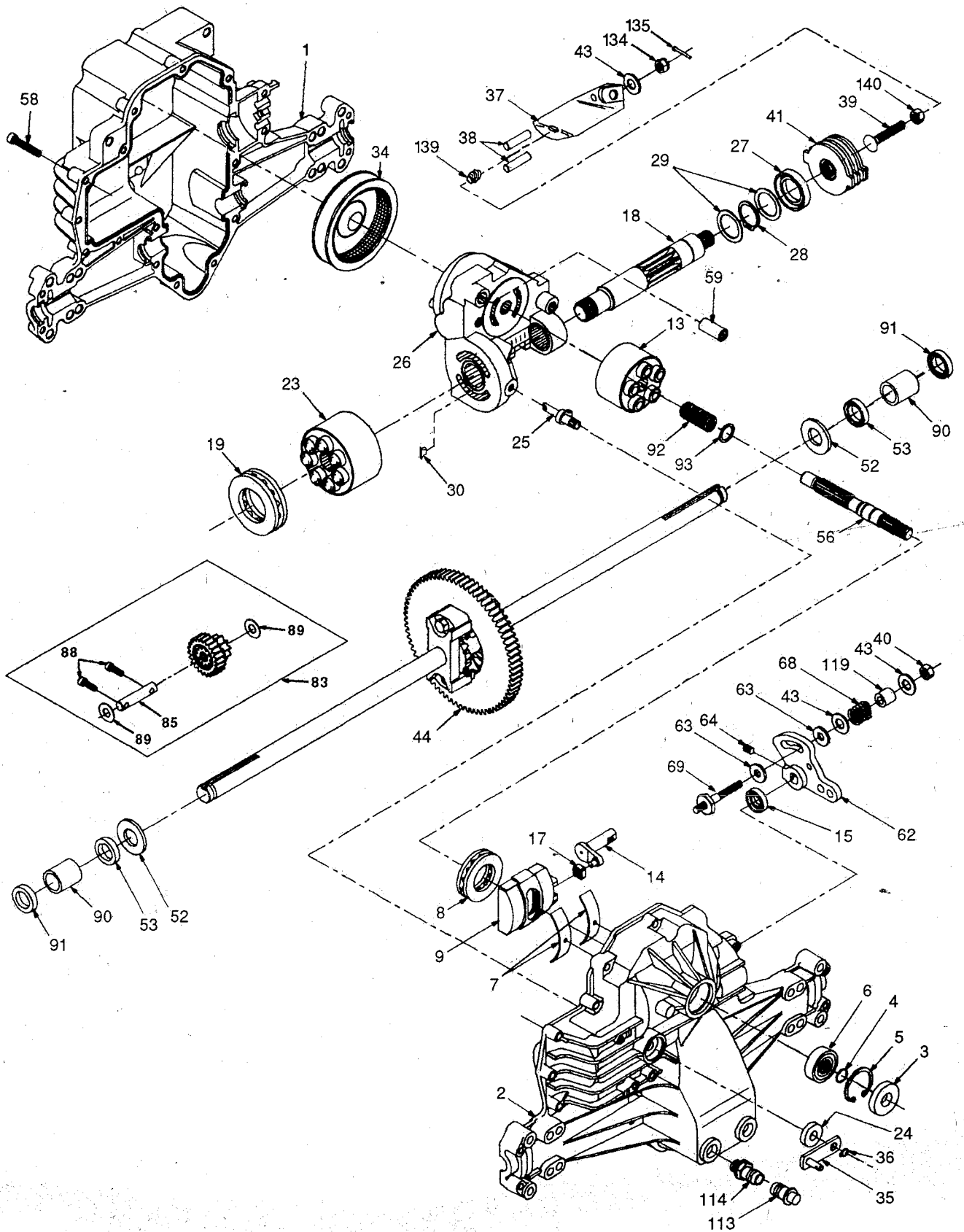
NOTE: All component dimensions given in U.S. inches
1 inch = 25.4 mm.

REPAIR PARTS

TRACTOR - - MODEL NUMBER UM15H42F

TRANSAXLE HYDRO GEAR - MODEL NUMBER 310-0650

TRANSAXLE



REPAIR PARTS

TRACTOR - - MODEL NUMBER UM15H42F

TRANSAXLE HYDRO GEAR - MODEL NUMBER 310-0650

TRANSAXLE

KEY PART NO. NO.	DESCRIPTION
1 142930	Housing, Lower
2 142931	Assembly, Upper Housing
3 142932	Seal, Lip
4 142928	Ring, Wire Retaining
5 142933	Ring, Retaining
6 142934	Bearing, Shaft Ball
7 142935	Bearing, Cradle
8 150771	Bearing, Thrust 30 x 52 x 13
9 142937	Swashplate, Variable
13 142938	Block, Cylinder Assembly
14 142939	Arm, Trunnion
15 142940	Seal, Lip
17 142941	Guide, Slot
18 150772	Shaft, Motor
19 150773	Bearing, Thrust 42 x 68 x 16
23 142944	Block, Cylinder Assembly
24 142945	Seal, Lip 10 x 25 x 7
25 142946	Actuator, Bypass
26 150774	Center Section Assembly Kit
27 142948	Seal, Lip 26 x 42 x 8
28 142949	Ring, Retaining
29 142950	Washer 26 x 35 x 1
34 142951	Oil Filter Element
35 142952	Arm, Bypass
36 142953	Ring, Retaining
37 142954	Arm, Actuating
38 142955	Pin, Actuating
39 150777	Bolt 5/16-24 x 1-3/4
40 150778	Locknut, Hex 5/16-24 UNJC
41 142958	Brake Rotor/Stator Kit

KEY PART NO. NO.	DESCRIPTION
43 142884	Washer 7/16 x 7/8 x .060
44 150829	Differential Assembly
52 142991	Washer 3/4 x 1.5 x .13
53 142961	Seal .75 x 1.25 x .250
56 142963	Shaft, Input
58 142964	Bolt 1/4-20 x 1.38
59 142965	Pin .5 OD x .43 ID x .750
62 142966	Arm, Control
63 142967	Puck, Dampener
64 142920	Set Screw
68 142969	Spring
69 144610	Stud 5/16-24
83 142971	Jackshaft Assembly
85 150806	Jackshaft
88 142973	Screw, Cap
89 142974	Washer 7/16 x 1 x 1/2
90 142975	Sleeve Bearing
91 142976	Seal, Wiper
92 142977	Spring, Block
93 142978	Washer, Block Thrust
113 142917	Cap, Vent Assembly
114 142918	Fitting, O-Ring Assembly
119 142980	Spacer
134 144607	Nut, Castle 5/16-24
135 144608	Pin, Cotter
139 150775	Spring, Compression
140 150776	Nut, Hex 5/16-24

NOTE: All component dimensions given in U.S. inches
1 inch = 25.4 mm