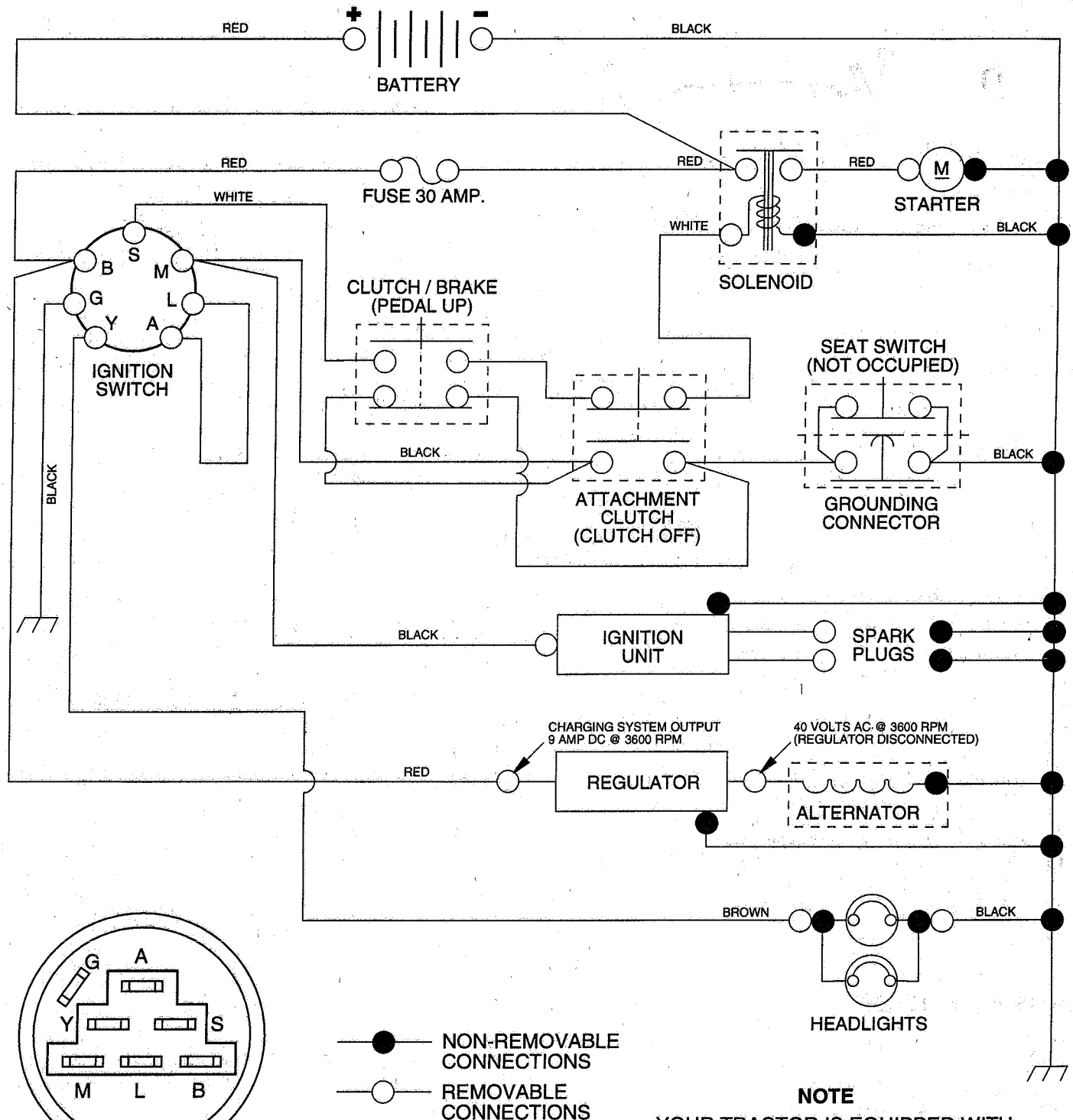


TRACTOR - - MODEL NUMBER UM18H42A

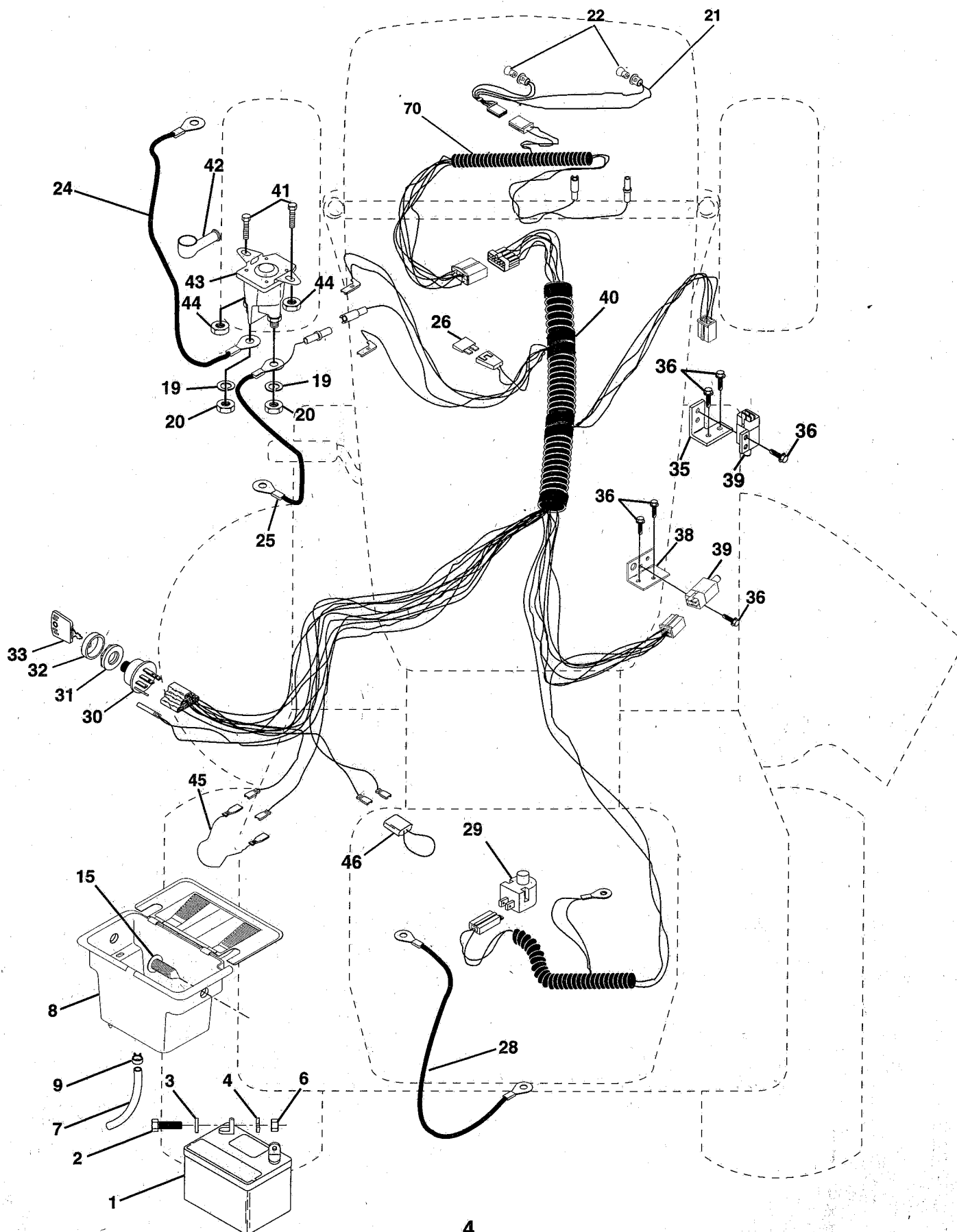
SCHEMATIC



REPAIR PARTS

TRACTOR - - MODEL NUMBER UM18H42A

ELECTRICAL



REPAIR PARTS

TRACTOR - - MODEL NUMBER UM18H42A

ELECTRICAL

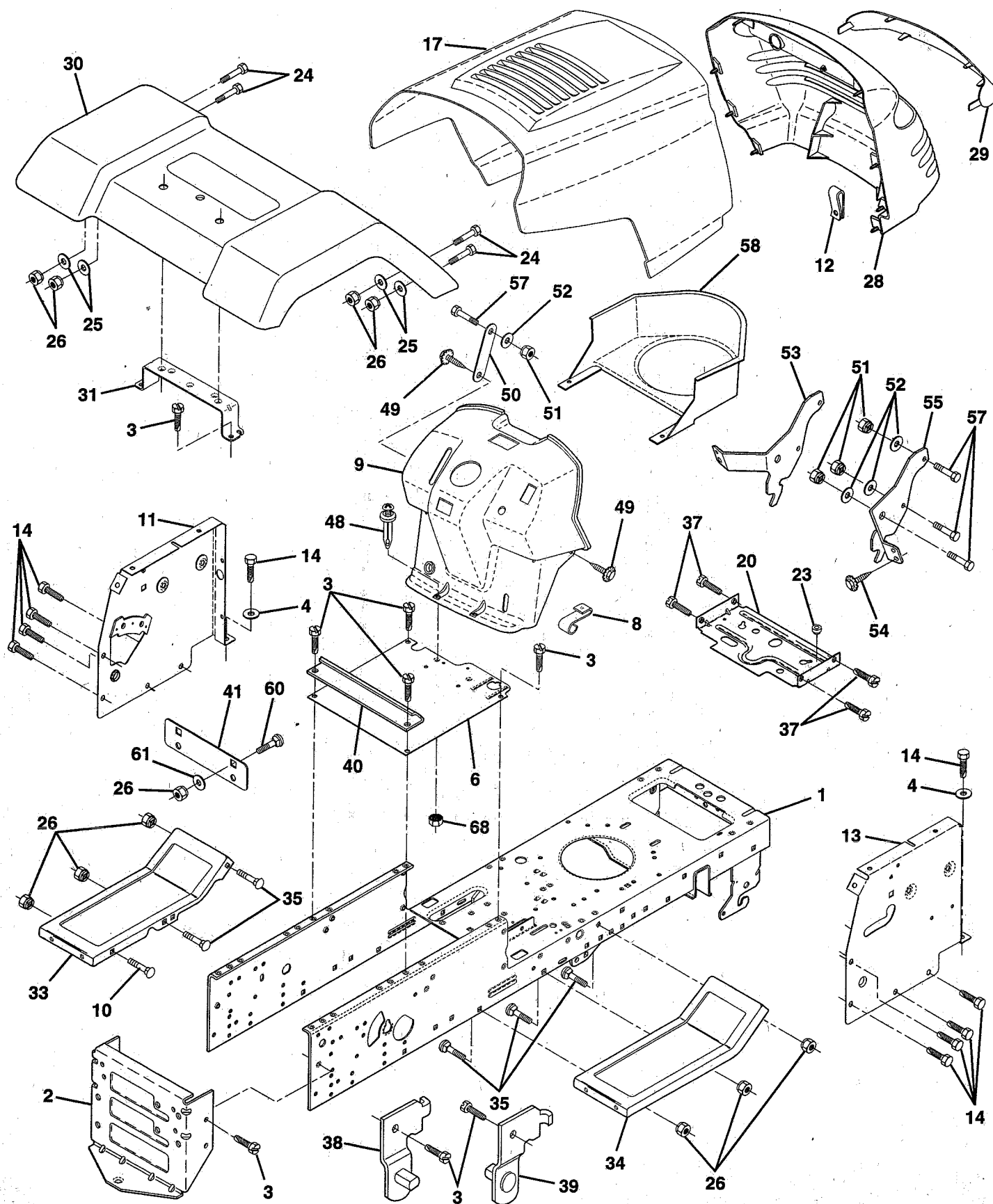
KEY NO.	PART NO.	DESCRIPTION
1	146139	Battery 12 Volt 25 Amp
2	74760412	Bolt Hex Hd 1/4-20unc X 3/4
3	19091016	Washer 9/32 X 5/8 X 16 Ga
4	10040400	Washer Lock Hvy Helical 1/4
6	73220400	Nut Fin Hex 1/4-20 Unc
7	109238X	Tube Plastic 12"
8	144940	Case Battery Hng. Mech. W/Lid
9	109596X	Clamp Hose Olive
15	147688	Fastner Snap In
19	10090400	Washer Lock 1/4
20	73350400	Nut Jam Hex 1/4-20 Unc
21	136850	Harness Socket Light W/4152J
22	4152J	Bulb, Light # 1156
24	4206J	Cable Battery 6 Ga 22" Red
25	146147	Cable Battery 6ga Red 44" W/16 wire
26	108824X	Fuse 30 Amp Auto Green
28	4207J	Cable Ground 6ga 12"black
29	121305X	Switch Plunger Nc Gray
30	140301	Switch Ign 4 Pos W/L P/L
31	124211X	Nut Ignition
32	141226	Cover Sw Key
33	122147X	Key Ign Molded Generic
35	108236X	Bracket Switch Clutch
36	17021008	Screw Hex Tapping # 10-24 Unc x 1/2
38	140336	Bracket Switch Interlock
39	109553X	Switch Interlock 4 Term
40	151212	Harness Ign
41	71110408	Bolt Fin Hex 1/4-20uncx1/2
42	131563	Cover Terminal Red
43	145673	Solenoid
44	73640400	Nut Keps Hex 1/4-20 Unc
45	140844	Adapter Ammeter
46	141940	Protection Loop
70	149858	Harness Eng. P/L BS 2 Cyl 9 AR

NOTE: All component dimensions given in U.S. inches
1 inch = 25.4 mm

REPAIR PARTS

TRACTOR -- MODEL NUMBER UM18H42A

CHASSIS AND ENCLOSURES



REPAIR PARTS

TRACTOR - - MODEL NUMBER UM18H42A

CHASSIS AND ENCLOSURES

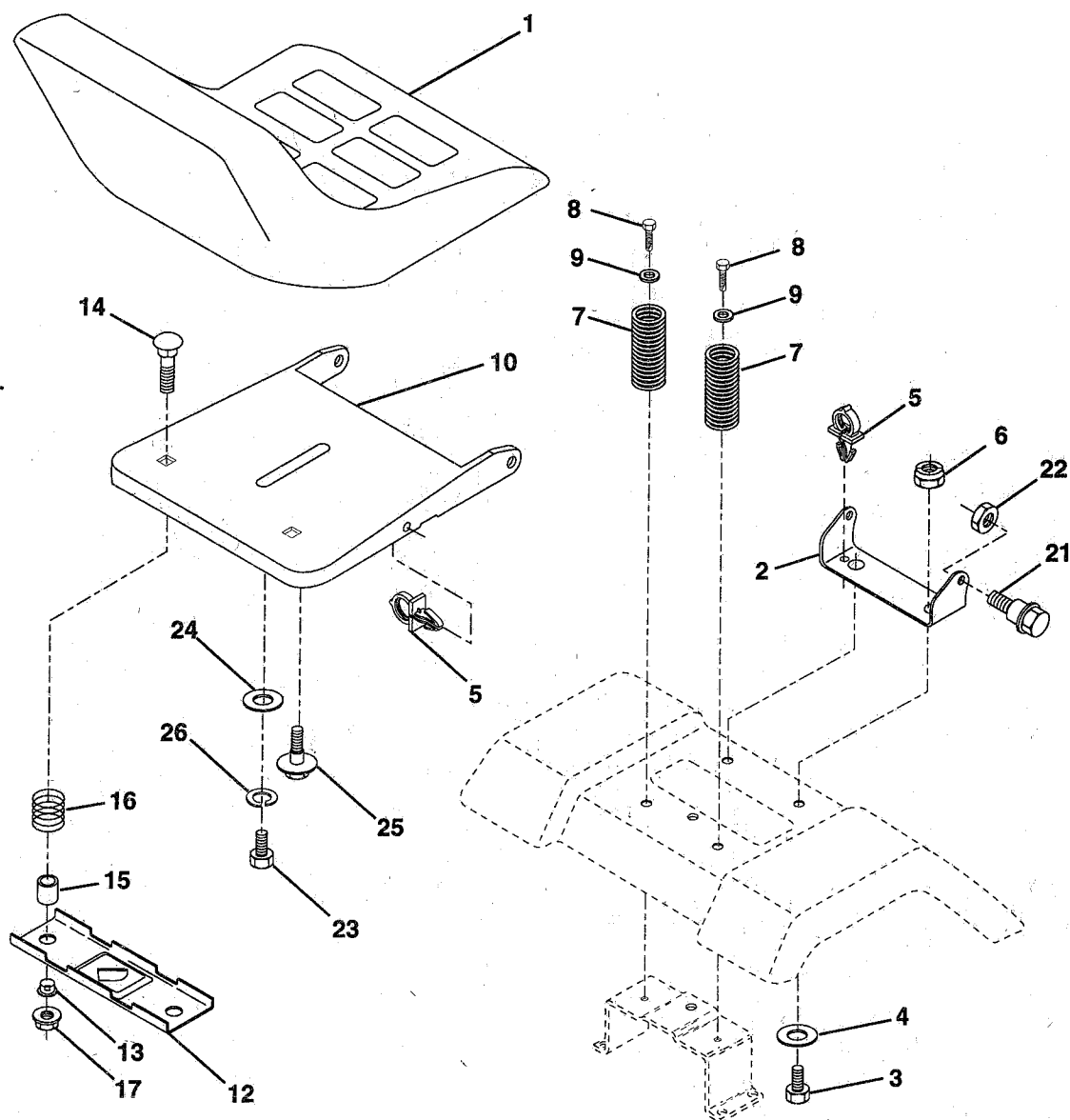
KEY NO.	PART NO.	DESCRIPTION
1	145501	Chassis Wldmt. 11Ga.
2	140356	Drawbar Stretch 94
3	17490612	Screw Thdrol. 3/8-16 x 3/4 Ty-Tt
4	19131216	Washer 13/32 x 3/4 x 16 Ga.
6	145206	Saddle Lt Fender Shift
8	126471X	Clip Insulator 406 Mtg Hole
9	142465	Dash Private Label
10	72140608	Bolt RdHd Sqnk. 3/8-16 Unc x 1
11	146965	Panel Asm Dash Lh Private Label 6pos
12	145660	Clip Tinnerman Grille P/L
13	146959	Panel Dash Rh Lt Private Label
14	17490608	Screw Thdrol. 3/8-16 x 1/2 Ty-Tt
17	139394X505	Hood Pnt Steel Private Label
20	145210	Plate Mtg Battery/Fuel Tank
23	124028X	Bushing Snap Nyl. Blk Fuel Line
24	74780616	Bolt Fin Hex 3/8-16 Unc x 1 Gr. 5
25	19131312	Washer 13/32 x 13/16 x 12 Ga.
26	73800600	Nut Lock Hex w/Ins 3/8-16 Unc
28	145502	Grill Private Lable Euro Ms-428
29	145503	Lens Euro Private label
30	140001X505	Fender Pnt Lt Ws Ni Ms-505 94
31	139976	Bracket Fender
33	145244X505	Footrest Pnt. Lh
34	145243X505	Footrest Pnt. Rh
35	72110606	Bolt RdHd Sht. Sqnk. 3/8-16 x 3/4
37	17490508	Screw Thdrol 5/16-18 x 1/2 TYT
38	139886	Bracket Asm. Pvt. Lh Mwr. Rear
39	139887	Bracket Asm. Pvt. Rh Mwr. Rear
40	139977	Spacer Fender Lt
41	139978	Plate Extension Fender Lt
48	138096	Rivet Push Plate D Plastic Blk
49	17490412	Screw Hex Wsh. Thdrol. 1/4-20 x 3/4
50	142779	Brace
51	73800400	Nut Lock Hex W/Ins. 1/4-20
52	19091416	Washer 9/32 x 7/8 x 16 Ga.
53	144697	Bracket Grille LH
54	17030814	Screw Lock Spider #8 x 7/8
55	144696	Bracket, Grille RH
57	74780412	Bolt Fin Hex 1/4-20 x 3/4
58	140547	Air Duct Private Label
60	72140606	Bolt RdHd Sqnk. 3/8-16 x 3/4
61	19171416	Washer 17/32 x 7/8 x 16 Ga.
68	73510400	Nut Keps Hex 1/4-20 Unc
--	5479J	Plug Button

NOTE: All component dimensions given in U.S. inches
1 inch = 25.4 mm

REPAIR PARTS

TRACTOR -- MODEL NUMBER UM18H42A

SEAT ASSEMBLY



KEY NO.	PART NO.	DESCRIPTION
1	127428	Seat
2	140551	Bracket Pivot Seat
3	74760616	Bolt Hex 3/8 - 16 X 1
4	19131610	Washer 13/32 X 1"
5	145006	Clip Push-In
6	73800600	NuT, Lock Hex W/Wsh 3/8-16 Unc
7	124181X	Spring Seat Cprsn 2 250 Blk Zi
8	17490616	Screw Thdrol 3/8-16 X 1 Ty-tt
9	19131614	Washer 13/32 X 1 X 14 Ga
10	140552	Pan Seat
12	121246X	Bracket Mounting Switch
13	121248X	Bushing Snap Blk Nyl 50 Id

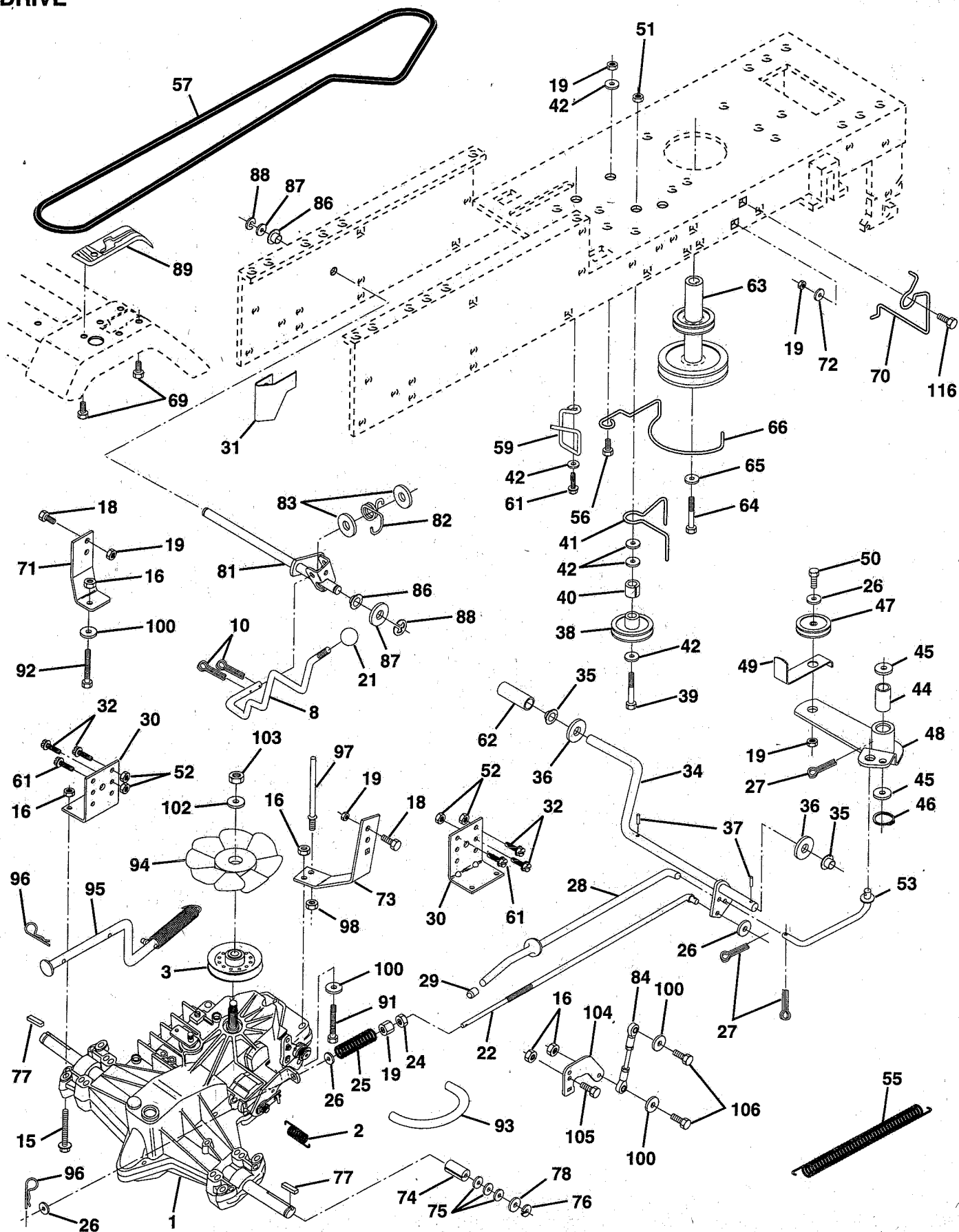
KEY NO.	PART NO.	DESCRIPTION
14	72050411	Bolt Rdhd Sht Nk 1/4-20x1-3/8
15	134300	Spacer Split 28x 96 Zinc
16	121250X	Spring Cprsn
17	123976X	Nut Lock 1/4 Lge Flg Gr 5 Zinc
21	139888	Bolt Shoulder 5/16-18
22	73680500	Nut Crown Lock 5/16-18
23	74780814	Bolt Fin Hex 1/2-13 X 7/8 Gr 5
24	19171912	Washer 17/32 X 1-3/16 X 12 Ga
25	127018X	Bolt Shoulder 5/16-18 X 62
26	10040800	Washer Lock Hvy Hlcl Spr 1/2

NOTE: All component dimensions given in U.S. inches
1 inch = 25.4 mm.

REPAIR PARTS

TRACTOR -- MODEL NUMBER UM18H42A

DRIVE



REPAIR PARTS

TRACTOR -- MODEL NUMBER UM18H42A

DRIVE

KEY NO.	PART NO.	DESCRIPTION
1	150071	Transaxle Assembly
2	142431	Spring, Return, Brake
3	143995	Pulley, Transaxle
8	141003	Rod Shift Hydro LT
10	76020416	Pin Cotter 1/8 x 1 CAD
15	74490544	Bolt Hex Flghd 5/16-18 Gr. 5
16	73800500	Nut Lock Hex W/Ins 5/16-18 Unc P
18	74780616	Bolt Fin Hex 3/8-16 Unc x 1 Gr. 5
19	73800600	Nut Lock Hex W/Wsh 3/8-16 Unc
21	106933X	Knob, Rd. 1/2-13
22	145627	Rod, Brake Hydro
24	73350600	Nut
25	106888X	Spring, Brake Rod
26	19131316	Washer
27	76020412	Pin Cotter 1/8 x 3/4 CAD.
28	145204	Rod, Parking Brake
29	71673	Cap, Parking Brake
30	130807	Bracket, Transaxle
31	127275X	Keeper Belt Lh
32	74760512	Bolt Hex Hd 5/16-18 Unc x 3/4
34	149001	Shaft, Foot Pedal
35	120183X	Bearing, Nylon
36	19211616	Washer
37	1572H	Pin, Roll
38	123674X	Pulley, Idler, Flat
39	74760644	Bolt
40	4470J	Spacer, Split
41	109070X	Keeper, Belt Retainer
42	19131312	Washer 13/32 x 13/16 x 12 Gauge
44	105706X	Bearing, Nylon
45	110812X	Washer, Hardened
46	12000039	Ring, Klip
47	127783	Pulley, Idler, V-Groove
48	123789X	Belcrank Assembly
49	123205X	Retainer, Belt
50	74760624	Bolt
51	73680600	Nut, Crownlock 3/8-16 Unc
52	73680500	Nut, Crownlock 5/16-18 Unc
53	105710X	Link, Clutch
55	105709X	Spring, Return, Clutch
56	74760620	Bolt Fin Hex 3/8-16Unc x 1-1/4
57	140294	V-Belt, Ground Drive

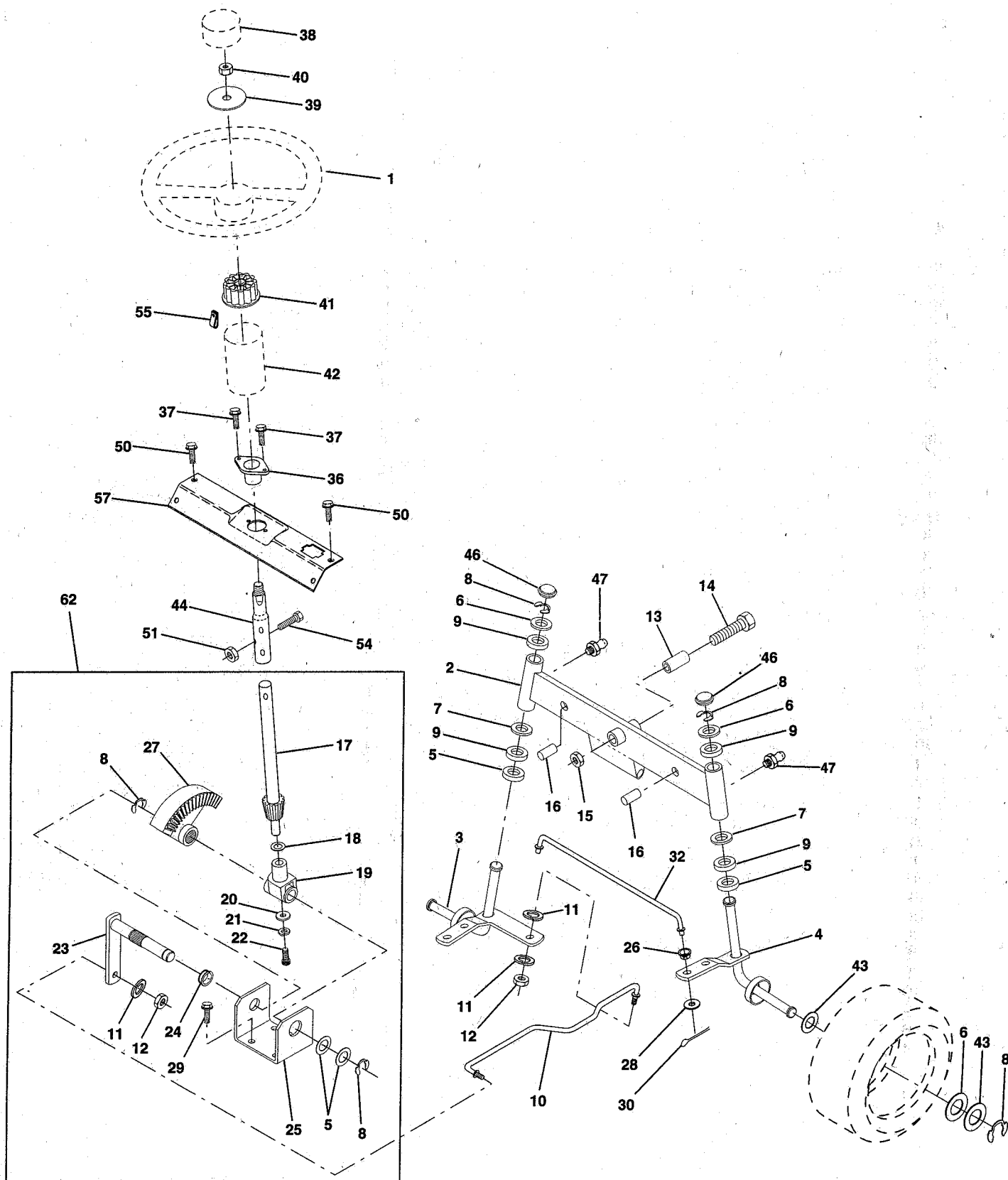
KEY NO.	PART NO.	DESCRIPTION
59	140312	Keeper, Center Span
61	17490612	Screw Thdrol. 3/8-16 x 3/4 Ty. TT
62	8883R	Cover, Pedal
63	140186	Pulley, Engine
64	71170764	Bolt, Hex
65	10040700	Washer
66	129921	Keeper Belt Engine
69	142432	Screw
70	134683	Keeper Belt Engine
71	140158	Strap Torque Lh Hydro 18/20" T
72	19132012	Washer 13/32 x 1-1/4 x 12 Gauge
73	140157	Strap Torque Rh Hydro 18/20" T
74	121199X	Spacer, Split
75	121749X	Washer 25/32 x 1-1/4 x 16 Gauge
76	12000001	E-Ring
77	123583X	Key, Square
78	121748X	Washer 25/32 x 1-5/8 x 16 Gauge
81	140154	Shaft Asm. Cross Hydro 20" Tires
82	123782X	Spring Torsion T/A
83	19171216	Washer 17/32 x 3/4 x 16 Ga.
84	140548	Rod, Tie Hydro 20" Tires
86	71208	Bushing Rod Strig. 629/632 ID
87	19212016	Washer 21/32 x 1-1/4 x 16 Ga.
88	12000008	Ring Klip #5304-62
89	139988	Console, Shift
91	74780536	Bolt Fin Hex 5/16-18 x 2-1/4
92	74780524	Bolt Fin Hex 5/6-18 Unc x 1-1/2
93	142564	Line Fuel Hydro 4"
94	140462	Fan, Hydro 7"
95	144643	Control, Asm. Bypass Hydro
96	4497H	Retainer Spring 1" Zinc/Cad
97	140469	Keeper Bolt Rh Hydro 0750. 18/20"
98	73510600	Nut Keps Hex 3/8-16 Unc
100	19111216	Washer 11/32 x 3/4 x 16 Ga.
102	141322	Washer Belville .501D x 1.50D
103	73940800	Nut, Hex Jam Toplock 1/2-20 Unf
104	140156	Arm, Control Hydro
105	71070516	Screw Cap Hex 5/16 x 18 x 1
106	74780520	Bolt Fin Hex 5/16-18 Unc x 1-1/4

NOTE: All component dimensions give in U.S. inches.
1 inch = 25.4 mm.

REPAIR PARTS

TRACTOR - - MODEL NUMBER UM18H42A

STEERING ASSEMBLY



REPAIR PARTS

TRACTOR - - MODEL NUMBER UM18H42A

STEERING ASSEMBLY

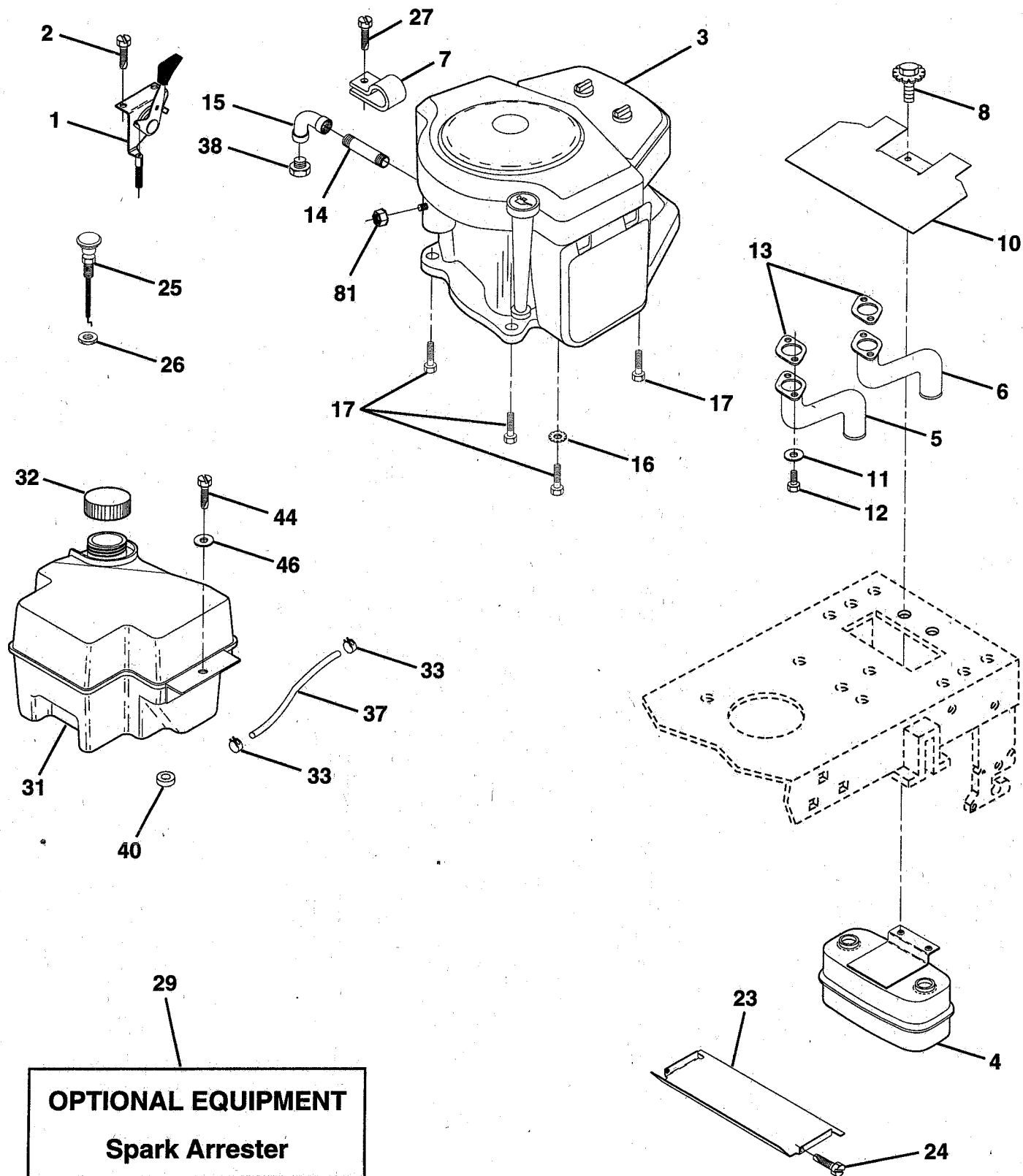
KEY NO.	PART NO.	DESCRIPTION
1	133741	Wheel Steering Ayp/kelch Blk
2	142033	Axle Asm Fr LT W/gzks 38/42
3	135227	Spindle Asm LH
4	135228	Spindle Asm RH
5	6266H	Bearing Race Thrust Harden
6	121748X	Washer 25/32 X 1-5/8 X 16 Ga
7	19272016	Washer 27/32 X 1-1/4 X 16 Ga
8	12000029	Ring Klip #t5304-75
9	3366R	Bearing Col Strg Blk
10	130468	Link Drag Sol Ball Jt 20 064
11	10040600	Washer Lock Hvy Hlcl Spr 3/8
12	73610600	Nut Fin Hex 3/8-24 Unf
13	110438X	Spacer Bearing Axle Front
14	74011056	Bolt Hex 5/8-11 Unc X 3-1/2
15	73901000	Nut Lock Flange 5/8-11 Unc
16	132624	Pin Axle 5/8 X 1 55/1 54 Lg
17	140176	Shaft Asm Strg
18	57079	Washer Thrust 515x 750x 033
19	124035X	Support Shaft
20	126684X	Washer Shim 1/4 X 5/8 X 062
21	10040400	Washer Lock Hvy Helical 1/4
22	71070410	Screw Hex Socket 1/4-20 X 5/8
23	127501	Shaft Asm Pittman
24	109816X	Nyliner Snap In
25	124036X	Bracket Steering
27	136874	Gear Sector 22 Teeth
26	126847X	Bushing Link Drag Blk Lr
28	19131416	Washer 13/32 x 7/8 x 16 Ga.
29	17490612	Screw Thdrol 3/8-16x3/4 Ty-tt
30	76020412	Pin Cotter 1/8 x 3/4 Cad
32	130465	Rod Tie Wire Form 19 75 Mech
36	102803X	Bushing Steering
37	17431008	Screw Slftp #10-16 X 1/2 Ty-b
38	133742	Cap Wheel Steer Ayp/Kelch Blk
39	19133808	Washer 13/32 x 2-3/8 x 8 Ga
40	7810H	Nut Lock Center 3/8-24 Unf
41	104820X	Adapter Wheel Strg .640/.635
42	140216	Boot Shaft Steering
43	121749X	Washer 25/32 X 1 1/4 X 16 Ga
44	146690	Shaft Extension Steering P/L
46	121232X	Cap Spindle Fr Top Blk
47	6855M	Fitting Grease
50	17490412	Screw Hex Wsh Thdrol 1/4-20 x 3/4
51	73800500	Nut Lock Hex W/Ins. 5/16-18 Unc P
54	74780520	Bolt Fin Hex 5/16-18 Unc P
55	140285	Clip Timmerman
57	140172	Support Shaft Steering
62	149686	Steering Assembly

NOTE: All component dimensions given in U.S. inches
1 inch = 25.4 mm

REPAIR PARTS

TRACTOR - - MODEL NUMBER UM18H42A

ENGINE



REPAIR PARTS

TRACTOR - - MODEL NUMBER UM18H42A

ENGINE

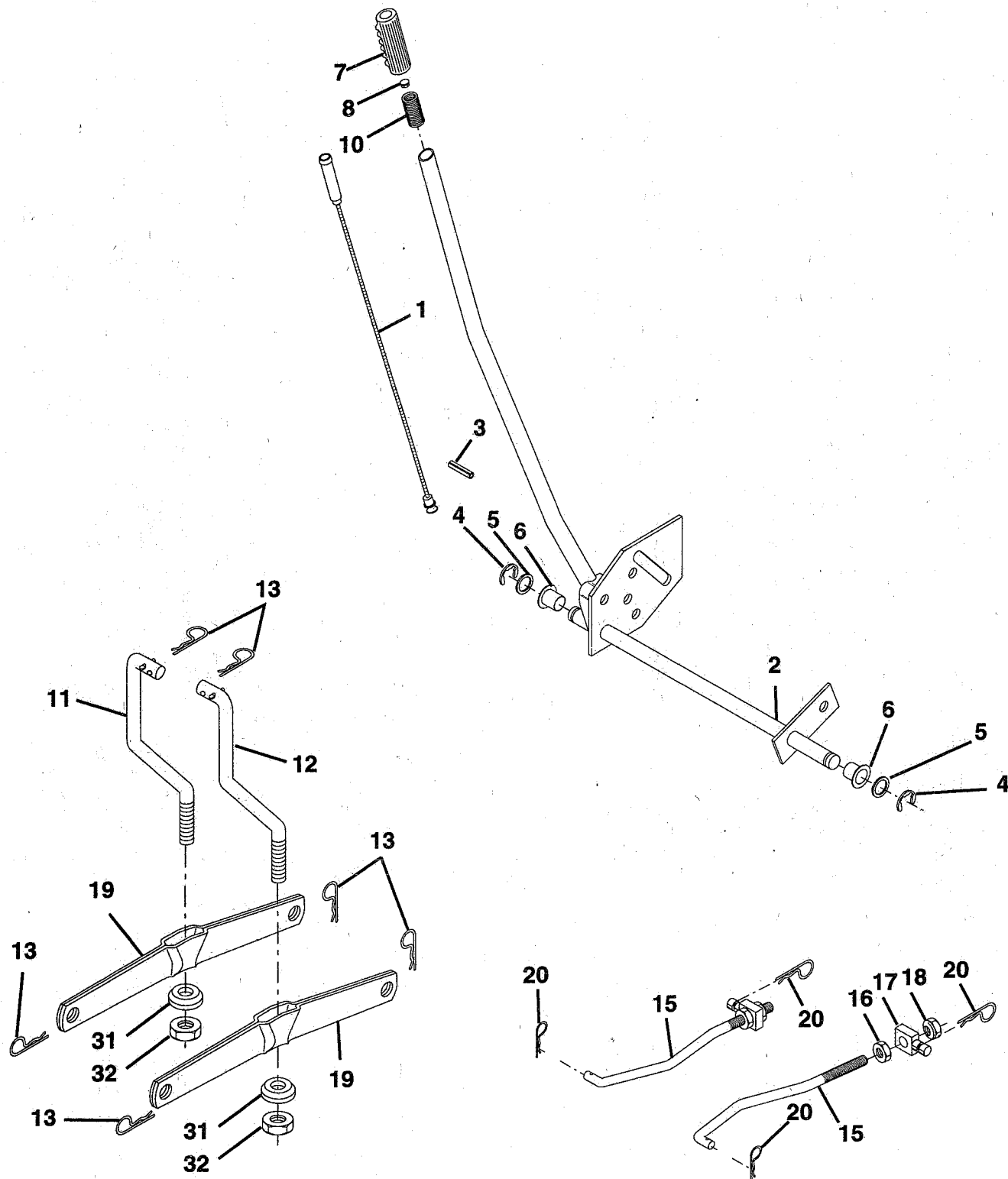
KEY NO.	PART NO.	DESCRIPTION
1	141295	Control, Throttle
2	17720410	Screw, Hex Hd, Thd Cut 1/4-20 x 5/8
3	-----	Engine, Briggs, Model No. 42A777
4	149723	Muffler Asm.
5	144069	Exhaust Asm, LH
6	144068	Exhaust Asm, RH
7	138129	Clamp Tube Double Engine
8	150176	Bolt 5/16-18 Unc x 3/4 w/Sems
10	145552	Shield, Heat
11	-----	Washer, Lock 1/4 (Order From Engine Manufacturer)
12	-----	Bolt Fin Hex 1/4-20 UNC x .75 (Order From Engine Manufacturer)
13	-----	Muffler Gasket (Order From Engine Manufacturer)
14	13280336	Nipple, Pipe 3/8 NPT x 4-1/2
15	13200300	Elbow, Standard 90° 3/8-18 NPT
16	11050600	Washer, Lock, External Tooth 3/8
17	17490624	Screw, Thdrol. 3/8-16 x 1-1/2 TT
23	128953	Shield, Heat, Grass Browning
24	17021008	Screw, Hex Hd, Self-Tapping #10-24 UNC x 1/2
25	145996	Choke Control
26	73920600	Nut, Keps 3/8-24 Unf
27	17541008	Screw SLFTP #10-24 x 1/2 TT-B
29	137180	Kit, Spark Arrestor
31	140280	Tank Fuel 2 00 Front
32	140527	Cap Asm Fuel W/sym Vented
33	123487X	Clamp, Hose
37	137040	Line, Fuel
38	-----	Plug, Oil Drain (Order From Engine Manufacturer)
40	124028X	Bushing
44	17490412	Screw Hexwsh Thdrol 1/4-20 x 3/4
46	19091416	Washer 9/32 x 7/8 x 16 Ga.
81	128861	Nut, Flange 1/4-20 Starter Nut

NOTE: All component dimensions given in U.S. inches
1 inch = 25.4 mm.

REPAIR PARTS

TRACTOR - - MODEL NUMBER UM18H42A

LIFT



REPAIR PARTS

TRACTOR - - MODEL NUMBER UM18H42A

LIFT

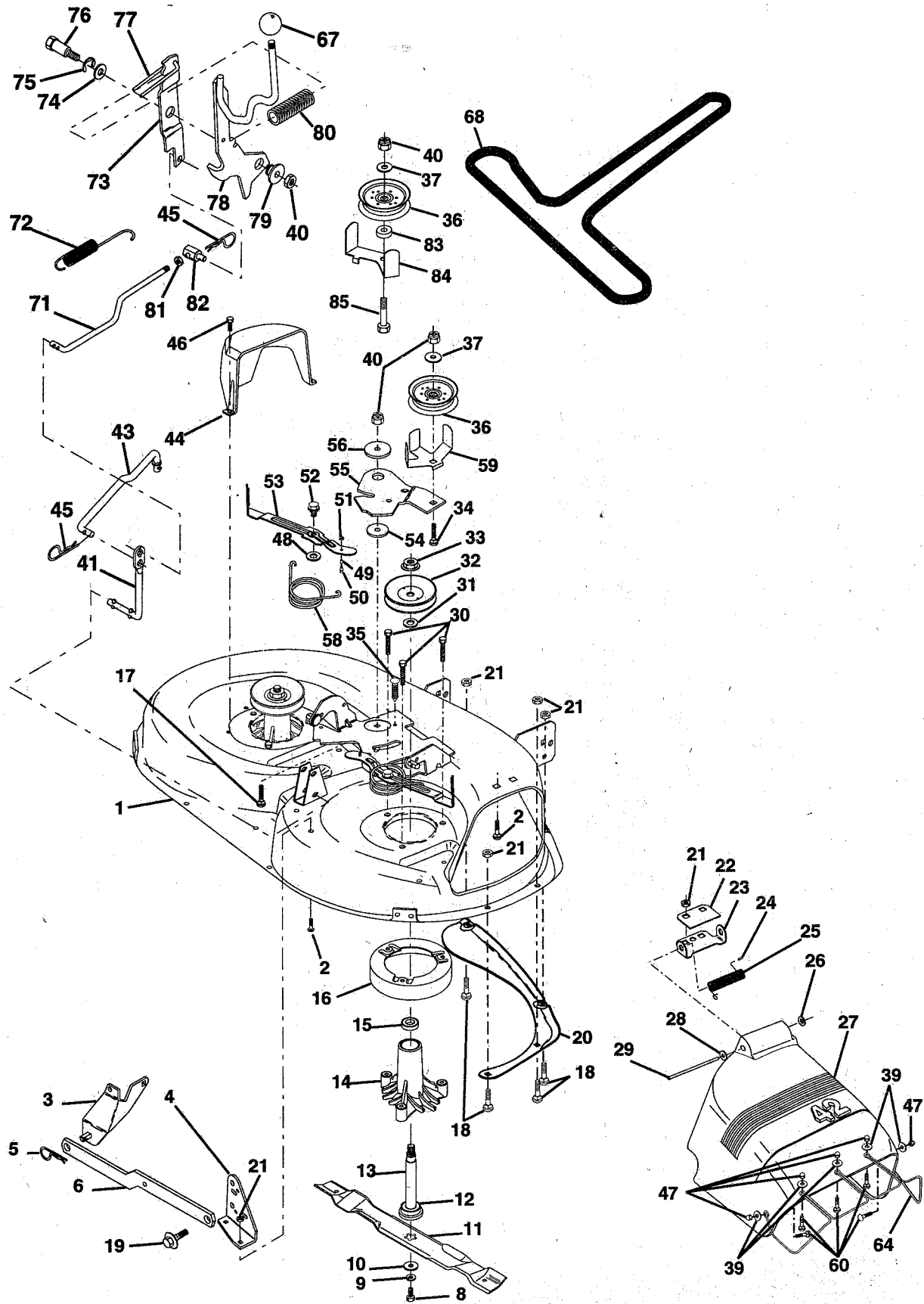
KEY NO.	PART NO.	DESCRIPTION
1	136973	Wire Asm Inner W/Plunger
2	140278	Shaft Asm Lft LH
3	138284	Pin Groove
4	12000002	E-ring Truarc #5133-62
5	19211621	Washer Pltd 21/32 X 1 X 21 Ga
6	120183X	Bearing Nylon
7	109413X	Grip Handle Matte
8	124526X	Button Plunger Black
10	122512X	Spring Cprsn
11	139865	Link Lift LH
12	139866	Link Lift RH
13	4939M	Retainer Spring
15	127218	Link Front
16	73350800	Nut Jam Hex 1/2-13 Unc
17	130171	Trunnion Blk Zinc
18	73800800	Nut Lock W/wsh 1/2-13unc
19	139868	Arm Suspension Rear
20	3146R	Retainer Spring
31	140302	Bearing Pvt. Lift Spherical
32	73540600	Nut Crownlock 3/8-24

NOTE: All component dimensions given in U.S. inches
1 inch = 25.4 mm

REPAIR PARTS

TRACTOR -- MODEL NUMBER UM18H42A

MOWER DECK



REPAIR PARTS

TRACTOR - - MODEL NUMBER UM18H42A

MOWER DECK

KEY NO.	PART NO.	DESCRIPTION
1	144393	Mower Deck Assembly, 42"
2	72140506	Bolt
3	138017	Bracket Asm Fr. Sway Bar
4	138440	Bracket Asm Deck 42" Sway Bar
5	4939M	Retainer Spring
6	130832	Arm, Suspension, Rear
8	850857	Bolt 3/8-24 x 1.25 Grade 8
9	10030600	Washer, Lock
10	140296	Washer, Hardened
11	138498	Blade, High Lift 42"
12	129895	Bearing, Ball
13	137645	Shaft Assembly, Mandrel, Vented (Includes Key Number 12)
14	128774	Housing, Mandrel, Vented
15	110485X	Bearing, Ball, Mandrel
16	140329	Stripper, Vented Mower Deck
17	72110610	Bolt, Carriage 3/8-16 x 1-1/4
18	72140505	Bolt, Carriage 5/16-18 x 5/8
19	132827	Bolt, Shoulder
20	136888	Baffle, Vortex
21	73680500	Nut, Crownlock 5/16-18 UNC
22	134753	Stiffener Bracket
23	131267	Bracket, Deflector
24	105304X	Cap, Sleeve
25	123713X	Spring, Torsion, Deflector
26	110452X	Nut, Push
27	139450	Deflector, Clipping TUV
28	19111016	Washer 11/32 x 5/8 x 16 Gauge
29	131491	Rod, Hinge
30	138776	Screw Thdrol. Hex Head Zinc
31	129963	Washer, Spacer
32	129861	Pulley, Mandrel
33	137266	Nut, Toplock 9/16
34	72110614	Bolt
35	133835	Fastener, Christmas Tree
36	131494	Pulley, Idler, Flat
37	19131316	Washer 13/32 x 13/16 x 16 Ga.
39	19070718	Washer 7/32 x 7/16 x 18 Ga.
40	73680600	Nut, Crownlock 3/8-16 UNC
41	133551	Rod, Pivot, with Nibs

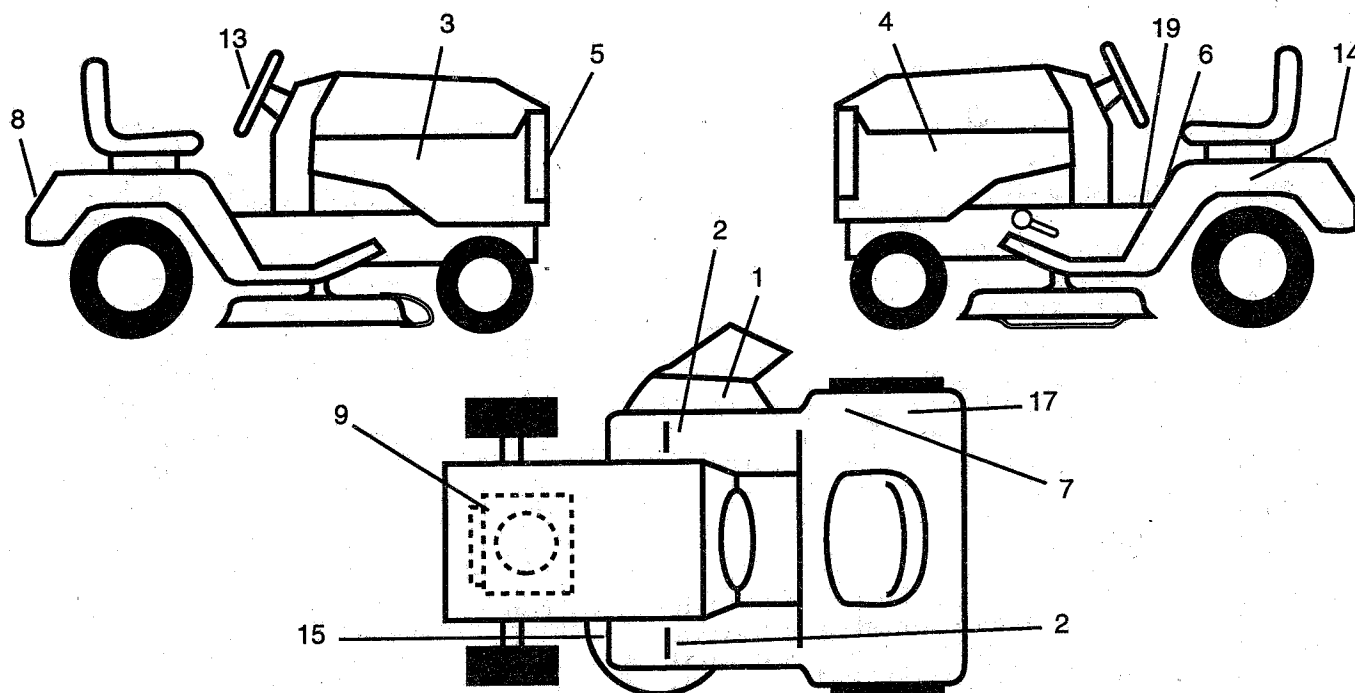
KEY NO.	PART NO.	DESCRIPTION
43	140083	Rod, Clutch, Secondary, with Nibs
44	140088	Guard, Mandrel, LH
45	4497H	Retainer
46	137729	Screw, Thread Roll 1/4-20 x 5/8
47	60867	Nut, Acorn Hex #10-24
48	133944	Washer, Hardened
49	133940	Roller Assembly, Cam Follower
50	131340	Bolt, Shloulder #10-24 Grade 5
51	69180	Locknut
52	139888	Bolt, Shoulder 5/16-18 UNC
53	131845	Arm Assembly, Pad, Brake
54	133943	Washer, Hardened
55	140084	Arm, Idler
56	122052X	Spacer, Retainer
58	140086	Spring Torsion Brakes
59	141043	Guard Tuv Idler
60	71161010	Screw Truss Hd Phil 10-24 x 5/8
64	139328	Guard, Deflector Mower 42" TUV
67	106933X	Knob Rd 1/2-13 UNC
68	144200	V-Belt, 42" Mower
71	142427	Rod, Clutch, Primary
72	131870	Spring, Extension, Return
73	127847	Arm, Clutch, Secondary
74	121748X	Washer 25/32 x 1-5/8 x 16 Gauge
75	12000029	Ring, Klip
76	128903	Bolt, Shoulder 3/8-16 UNC x 1.44
77	127845	Keeper, Spring
78	140179	Arm, Clutch, Primary
79	127498	Bushing, Large, Brass
80	128759	Spring, Mower Clutch
81	73350600	Nut Hex Jam 3/8-16 UNC
82	142028	Trunnion Adj.
83	120958X	Washer Sintered
84	144394	Keeper Belt Idler Fixed
85	72140618	Bolt Carriage 3/8-16 x 2-1/4
--	130794	Mandrel Assembly (Includes Key Numbers 8-10, 12-15, 31 and 33)
--	144783	Mower Deck, Complete

NOTE: All component dimensions given in U.S. inches
1 inch = 25.4 mm

REPAIR PARTS

TRACTOR -- MODEL NUMBER UM18H42A

DECALS



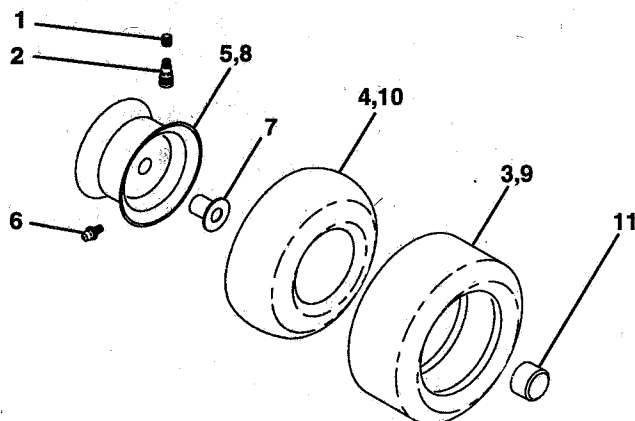
KEY NO.	PART NO.	DESCRIPTION
1	145494	Decal Mower Cut Finger Symbol
2	131864	Pad Footrest Abrasive
3	153266	Decal Hood Rh Rally P/L Lt
4	153267	Decal Hood Lh Rally P/L Lt
5	137661	Decal Insert Hood 18Hp Rally
6	145498	Decal Read Owners Manual Sym
7	145437	Decal Europe Stand CE
8	132628	Decal Fender Rally
9	272318	Decal Diamond
13	127075	Decal Wheel Steering
14	146451	Decal Bat Dan/Poi P/L Symbols
15	136832	Decal V-Belt Sch
17	125690X	Decal 100 DBA

KEY NO.	PART NO.	DESCRIPTION
19	140837	Decal Brake Parking Saddle
--	138311	Decal Handle LFT Height Adj
--	142341	Decal Drawbar Cntl. Mut Hyd Lt
--	152464	Manual Operator's Euro.
--	152490	Manual Operator's Scand.
--	152467	Manual Part's

Available accessories not included with your tractor:

LBD48	42" Snow Blade
C42	Grass Catcher
LC05	33" Wheel Wts.
LA018	Tire Chains
LSB42	40" Snow Thrower
MK42	Mulching Kit

WHEELS & TIRES



KEY NO.	PART NO.	DESCRIPTION
1	59192	Cap Valve Tire
2	65139	Stem Valve
3	106222X	Tire F Ts 15 X 6 0 - 6 Service
4	59904	Tube Front (Service Item Only)
5	106732X473	Rim Asm 6" (front Yellow Service)
6	278H	Fitting Grease (Front Wheel Only)
7	9040H	Bearing Flange (Front Wheel Only)
8	106108X473	Rim Asm 8" (rear Yellow Service)
9	122082X	Tire R Ts 20x10-8 C Service
10	7152J	Tube Rear (Service Item Only)
11	104757X	Cap Axle Blk 1 50 X 1 00
--	144334	Sealant, Tire (10 oz. Tube)

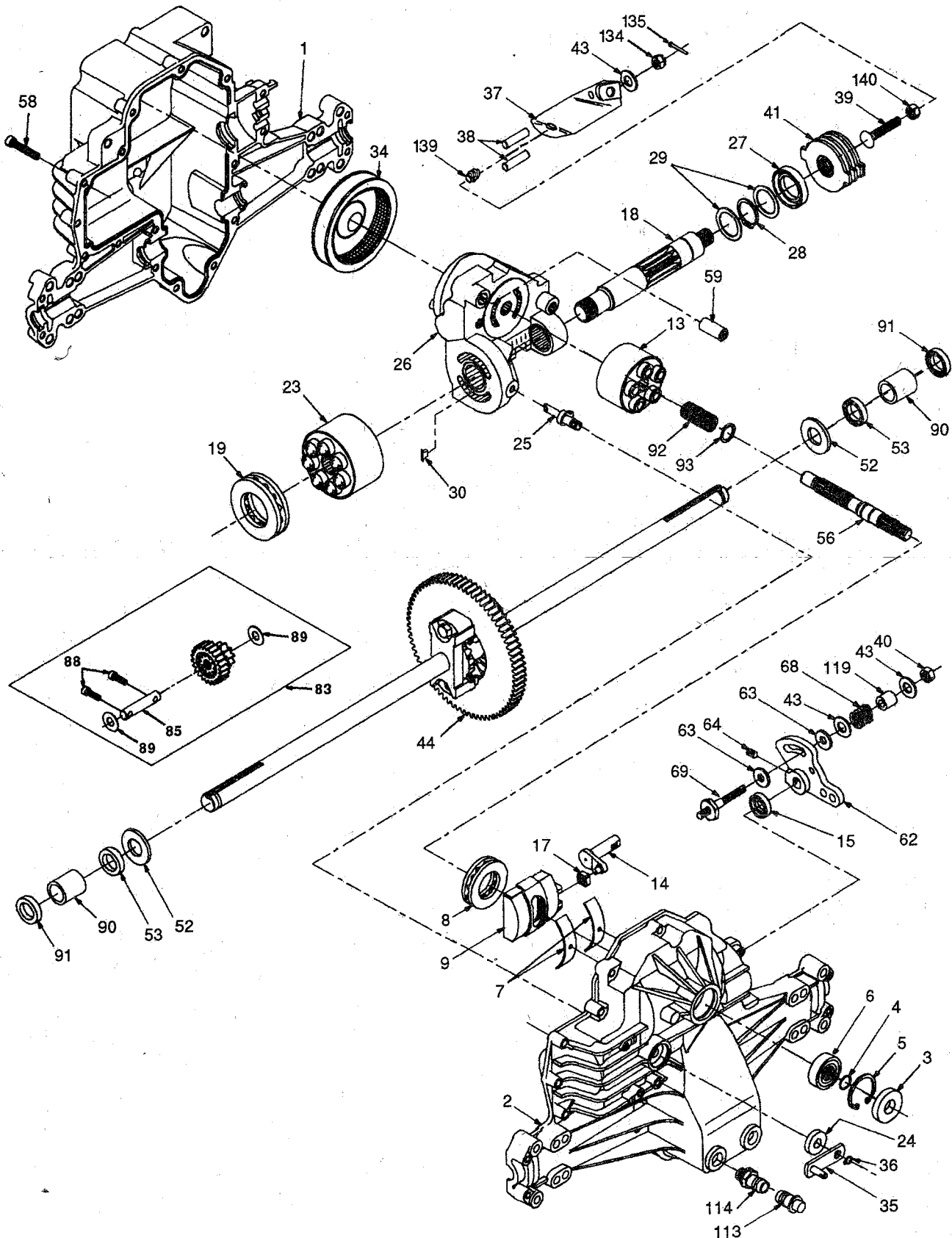
NOTE: All component dimensions given in U.S. inches
1 inch = 25.4 mm.

REPAIR PARTS

TRACTOR -- MODEL NUMBER UM18H42A

TRANSAXLE HYDRO GEAR - MODEL NUMBER 310-0650

TRANSAXLE



REPAIR PARTS

TRACTOR -- MODEL NUMBER UM18H42A

TRANSAXLE HYDRO GEAR - MODEL NUMBER 310-0650

TRANSAXLE

KEY PART NO. NO.

DESCRIPTION

1	142930	Housing, Lower
2	142931	Assembly, Upper Housing
3	142932	Seal, Lip
4	142928	Ring, Wire Retaining
5	142933	Ring, Retaining
6	142934	Bearing, Shaft Ball
7	142935	Bearing, Cradle
8	150771	Bearing, Thrust 30 x 52 x 13
9	142937	Swashplate, Variable
13	142938	Block, Cylinder Assembly
14	142939	Arm, Trunnion
15	142940	Seal, Lip
17	142941	Guide, Slot
18	150772	Shaft, Motor
19	150773	Bearing, Thrust 42 x 68 x 16
23	142944	Block, Cylinder Assembly
24	142945	Seal, Lip 10 x 25 x 7
25	142946	Actuator, Bypass
26	150774	Center Section Assembly Kit
27	142948	Seal, Lip 26 x 42 x 8
28	142949	Ring, Retaining
29	142950	Washer 26 x 35 x 1
34	142951	Oil Filter Element
35	142952	Arm, Bypass
36	142953	Ring, Retaining
37	142954	Arm, Actuating
38	142955	Pin, Actuating
39	150777	Bolt 5/16-24 x 1-3/4
40	150778	Locknut, Hex 5/16-24 UNJC
41	142958	Brake Rotor/Stator Kit

KEY PART NO. NO.

DESCRIPTION

43	142884	Washer 7/16 x 7/8 x .060
44	150829	Differential Assembly
52	142991	Washer 3/4 x 1.5 x .13
53	142961	Seal .75 x 1.25 x .250
56	142963	Shaft, Input
58	142964	Bolt 1/4-20 x 1.38
59	142965	Pin .5 OD x .43 ID x .750
62	142966	Arm, Control
63	142967	Puck, Dampener
64	142920	Set Screw
68	142969	Spring
69	144610	Stud 5/16-24
83	142971	Jackshaft Assembly
85	150806	Jackshaft
88	142973	Screw, Cap
89	142974	Washer 7/16 x 1 x 1/2
90	142975	Sleeve Bearing
91	142976	Seal, Wiper
92	142977	Spring, Block
93	142978	Washer, Block Thrust
113	142917	Cap, Vent Assembly
114	142918	Fitting, O-Ring Assembly
119	142980	Spacer
134	144607	Nut, Castle 5/16-24
135	144608	Pin, Cotter
139	150775	Spring, Compression
140	150776	Nut, Hex 5/16-24

NOTE: All component dimensions given in U.S. inches
1 inch = 25.4 mm