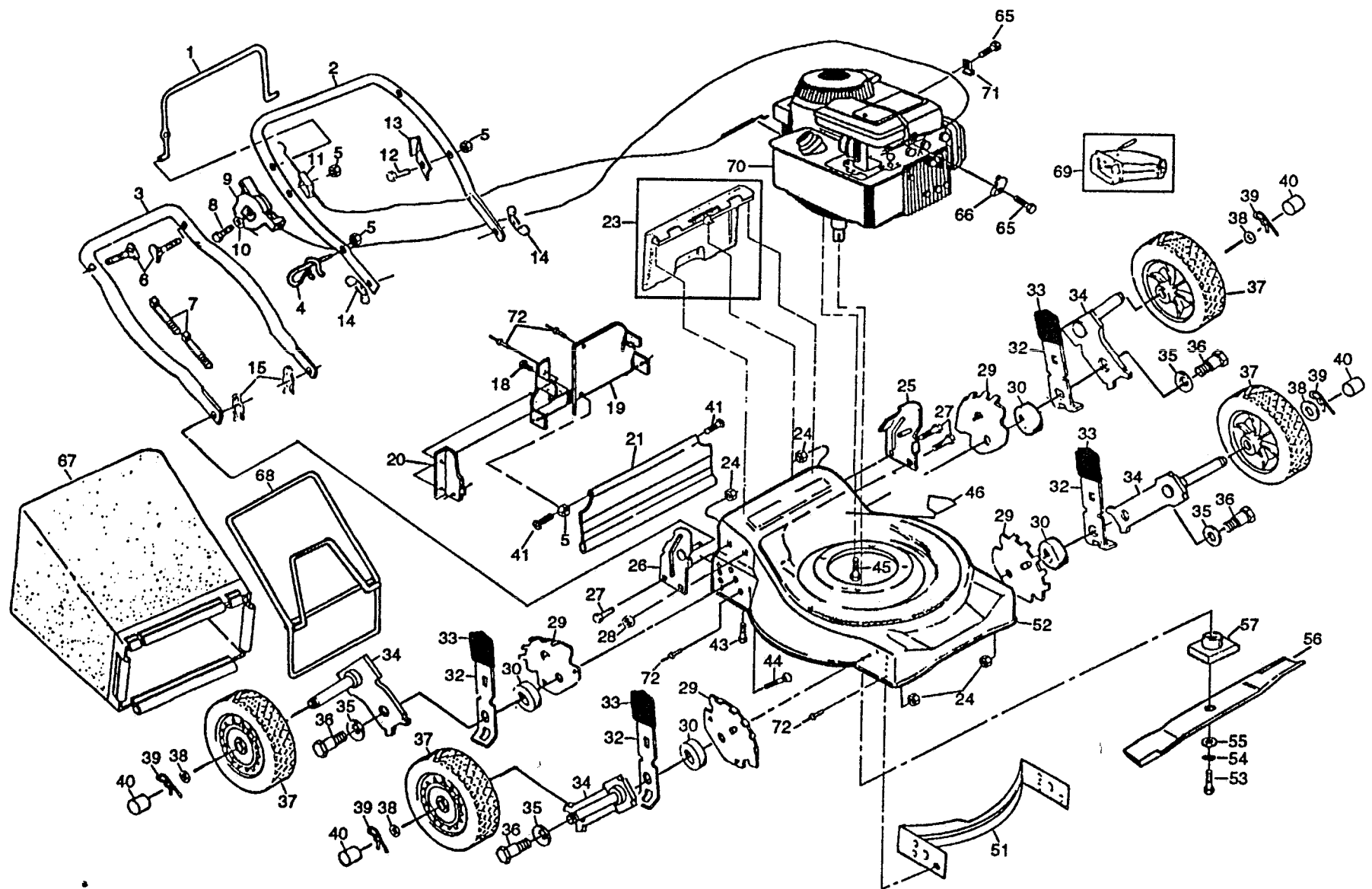


# REPAIR PARTS -- MODEL NO. X100B



# REPAIR PARTS LIST - - MODEL NO. X100B

KEY NO.	PART NO.	DESCRIPTION
1	86902	Control Bar
2	1326497X479	Upper Handle
3	84676X479	Lower Handle
4	132001	Rope Guide
5	63601	Locknut 1/4-20
6	131959	Handle Bolt
7	66426	Wire Tie
8	85692	Machine Screw 1/4-20 x 2 1/8
9	851462	Throttle Control
10	85723	Washer
11	851671	Engine Zone Control Cable
12	750097	Hex Washer Head Screw 10-24 x 1/2
13	850733X004	Up-Stop Bracket
14	128638	Wing Nut
15	51783	Hairpin Cotter
18	74310410	Screw
19	132364X475	Back Plate
20	133184X475	Side Baffle
21	133259	Rear Skirt
23	48138	Rear Door Assembly Kit (Incl. Ref. # 58)
24	751592	Locknut 3/8-16
25	81964X475	Handle Bracket Assembly (Left)
26	81963X475	Handle Bracket Assembly (Right)
27	55187	Screw 5/16-18 x 3/4
28	63124	Locknut 5/16-18
29	850955	Wheel Adjusting Bracket
30	84920	Spacer
32	850855X004	Selector Spring
33	87877	Selector Knob
34	85021X004	Axle Arm Assembly
35	62335	Belleville Washer
36	84921	Shoulder Bolt 3/8-16
37	800220	Wheel Assembly 8.0 x 1-3/4
38	52160	Washer
39	85179	Retainer Clip
40	800090	Hubcap
41	88652	Hinge Screw
43	54583	Hex Tapping Screw 1/4-20 x 1/2
44	72070505	Carriage Bolt 5/16-18 x 5/8
45	850998	Hex Head Thread Rolling Screw 3/8-16x1
46	107339X	Danger Decal
51	132198X479	Front Baffle
52	134584	Housing Assembly (Incl. Ref. #19, #20, #46 and #51)
53	851084	Hex Head Screw 3/8-24 x 1-3/8 Grd. 8
54	850263	Helical Lockwasher
55	851074	Hardened Washer
56	850972	20" Blade
57	850977	Blade Adapter
65	83818	Screw #10 x 5/8
68	213148	* Cable Clamp
67	128013	Grass Bag
68	750532	Catcher Frame
69	-----	MA36 Clipping Deflector (Not Incl. with Lawn Mower)
70	-----	* Engine - Briggs/Stratton Model No. 95902
71	850472	Cable Clip Throttle
72	128415	Pop Rivet
--	132097	Operator's Manual
--	135010	Replacement Parts Manual

\* THESE PARTS MUST BE PURCHASED THROUGH AN AUTHORIZED BRIGGS & STRATTON DEALER.

## LIMITED WARRANTY

The Manufacturer warrants to the original consumer purchaser that this product manufactured is free from defects in materials and workmanship. For a period of two (2) years from date of purchase by the original consumer purchaser, we will repair or replace, at our option, without charge for parts or labor incurred in replacing parts, any part which we find to be defective due to materials or workmanship. This Warranty is subject to the following limitations and exclusions.

1. This warranty does not apply to the engine, transaxle/transmission components, battery (except as noted below) or components parts thereof. Please refer to the applicable manufacturer's warranty on these items.
2. Transportation charges for the movement of any power equipment unit or attachment are the responsibility of the purchaser. Transportation charges for any parts submitted for replacement under this warranty must be paid by the purchaser unless such return is requested by the Manufacturer.
3. Battery Warranty: On products equipped with a Battery, we will replace, without charge to you, any battery which we find to be defective in manufacture, during the first year of ownership. After one year, we will exchange the Battery, charging you 1/12 of the price of a new Battery for each full month after one (1) year from the date of the original sale. Battery must be maintained in accordance with the instructions furnished.
4. The Warranty period for any products used for rental or commercial purposes is limited to ninety (90) days from the date of original purchase.
5. This Warranty applies only to products which have been properly assembled, adjusted, operated, and maintained in accordance with the instructions furnished. This Warranty does not apply to any product which has been subjected to alteration, misuse, abuse, improper assembly or installation, delivery damage, or to normal wear of the product.
6. Exclusions: Excluded from this Warranty are belts, blades, blade adapters, normal wear, normal adjustments, standard hardware and normal maintenance.
7. In the event you have a claim under this Warranty, you must return the product to an authorized service dealer.

Should you have any unanswered questions concerning this Warranty, please contact:

In U.S.A. contact:	In Canada contact:	International contact:
American Yard Products, Inc.	AYP Canada, Inc.	American Yard Products, Inc.
Service Department	1040 Jayson Court	Service Department
P.O. Box 370	Mississauga, Ontario	P.O. Box 1687
McRae, GA 31055	L4W 2V5	Orangeburg, SC 29116 USA

giving the model number, serial number and date of purchase of your product and the name and address of the authorized dealer from whom it was purchased.

THIS WARRANTY DOES NOT APPLY TO INCIDENTAL OR CONSEQUENTIAL DAMAGES AND ANY IMPLIED WARRANTIES ARE LIMITED TO THE SAME TIME PERIODS STATED HEREIN FOR OUR EXPRESSED WARRANTIES. Some areas do not allow the limitation of consequential damages or limitations of how long an implied Warranty may last, so the above limitations or exclusions may not apply to you. This Warranty gives you specific legal rights, and you may have other rights which vary from locale to locale.

This is a limited Warranty within the meaning of that term as defined in the Magnuson-Moss Act of 1975.

## MEETS CPSC SAFETY REQUIREMENTS

Our Rotary Walk-Behind Power Lawn Mowers conform to the safety standards of the American National Standards Institute and the U.S. Consumer Product Safety Commission. The blade turns when the engine is running.