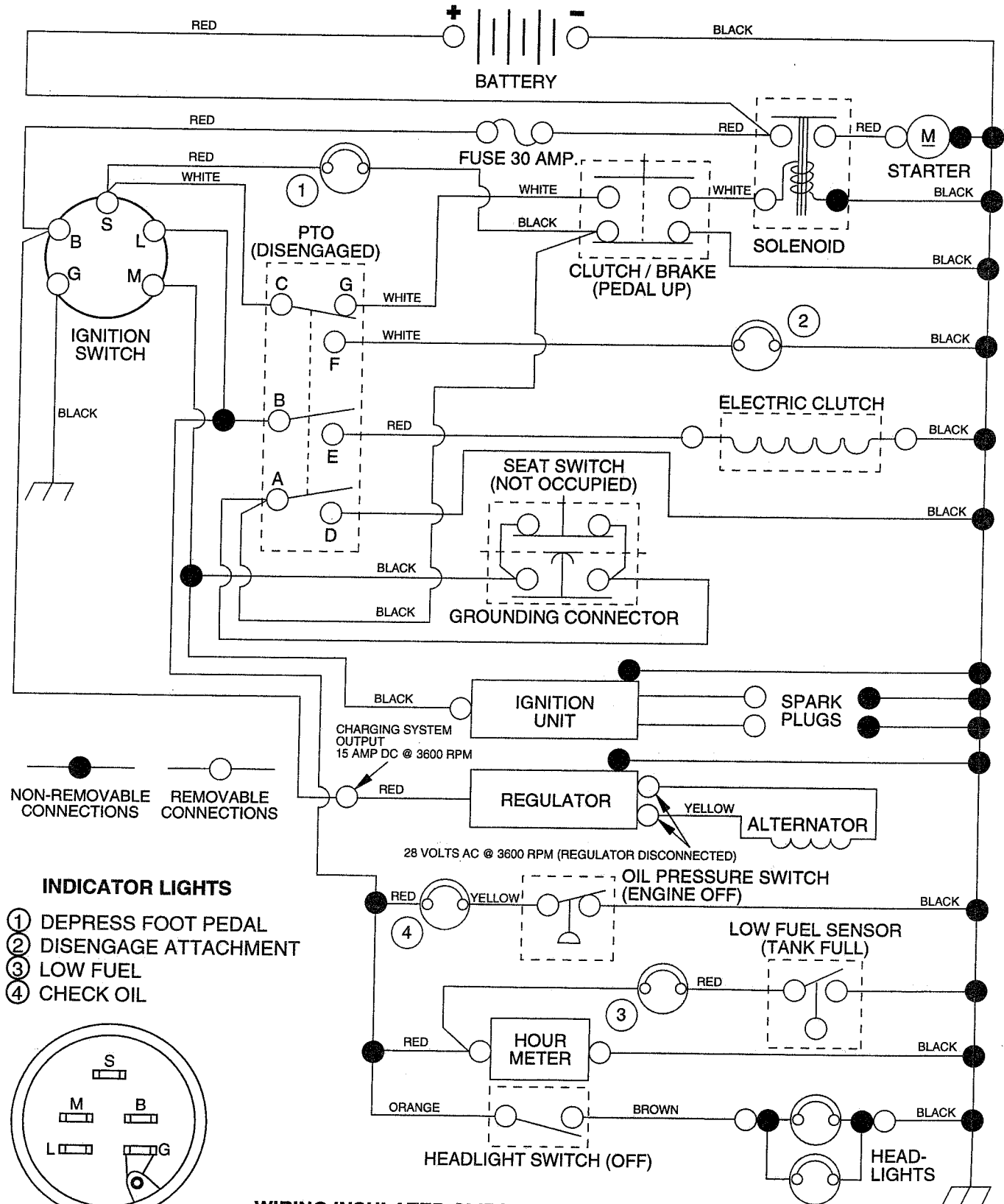


20 HP 50" TRACTOR - - MODEL NUMBER YE2050A

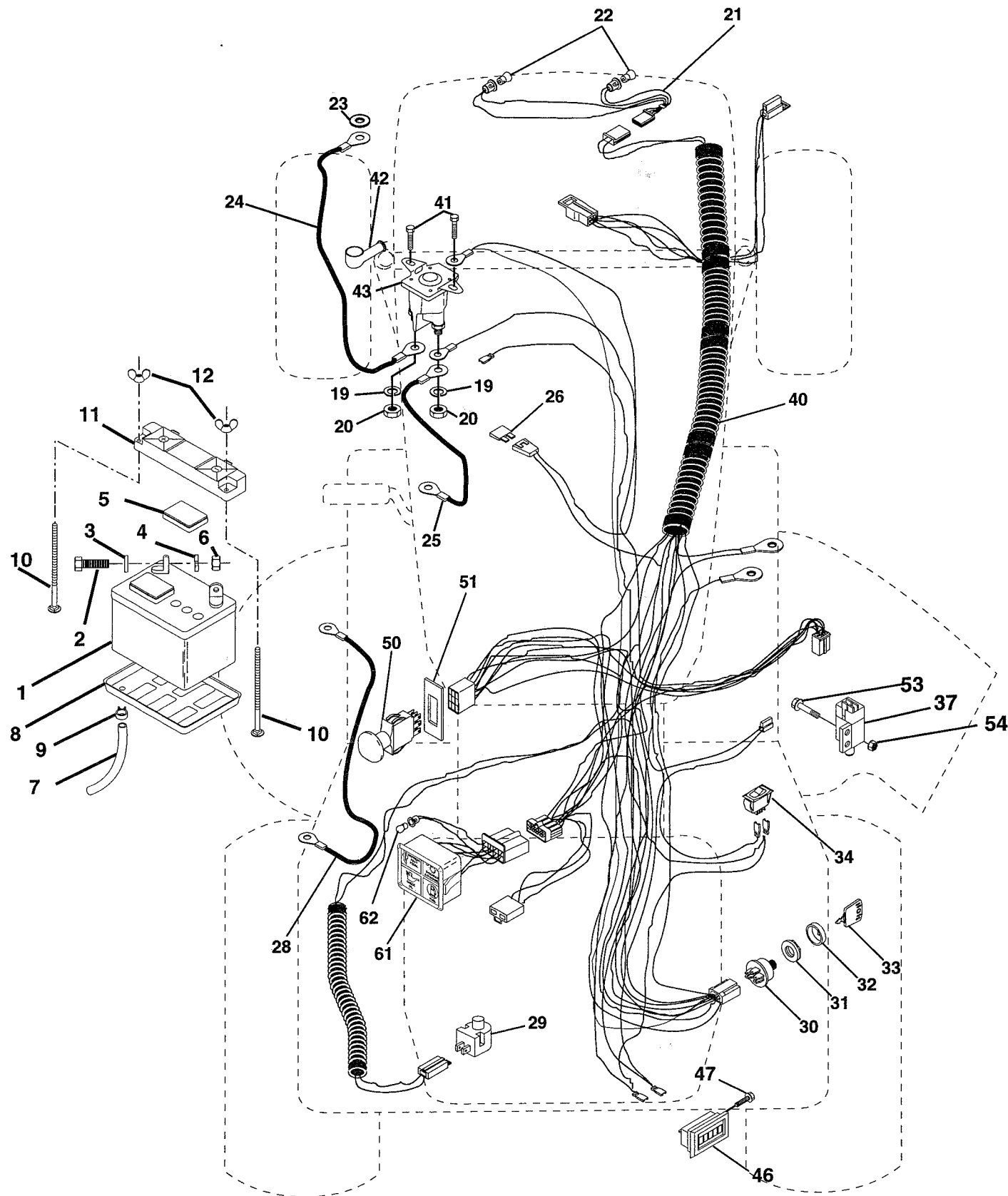
SCHEMATIC



REPAIR PARTS

20 HP 50" TRACTOR - - MODEL NUMBER YE2050A

ELECTRICAL



REPAIR PARTS

20 HP 50" TRACTOR - - MODEL NUMBER YE2050A

ELECTRICAL

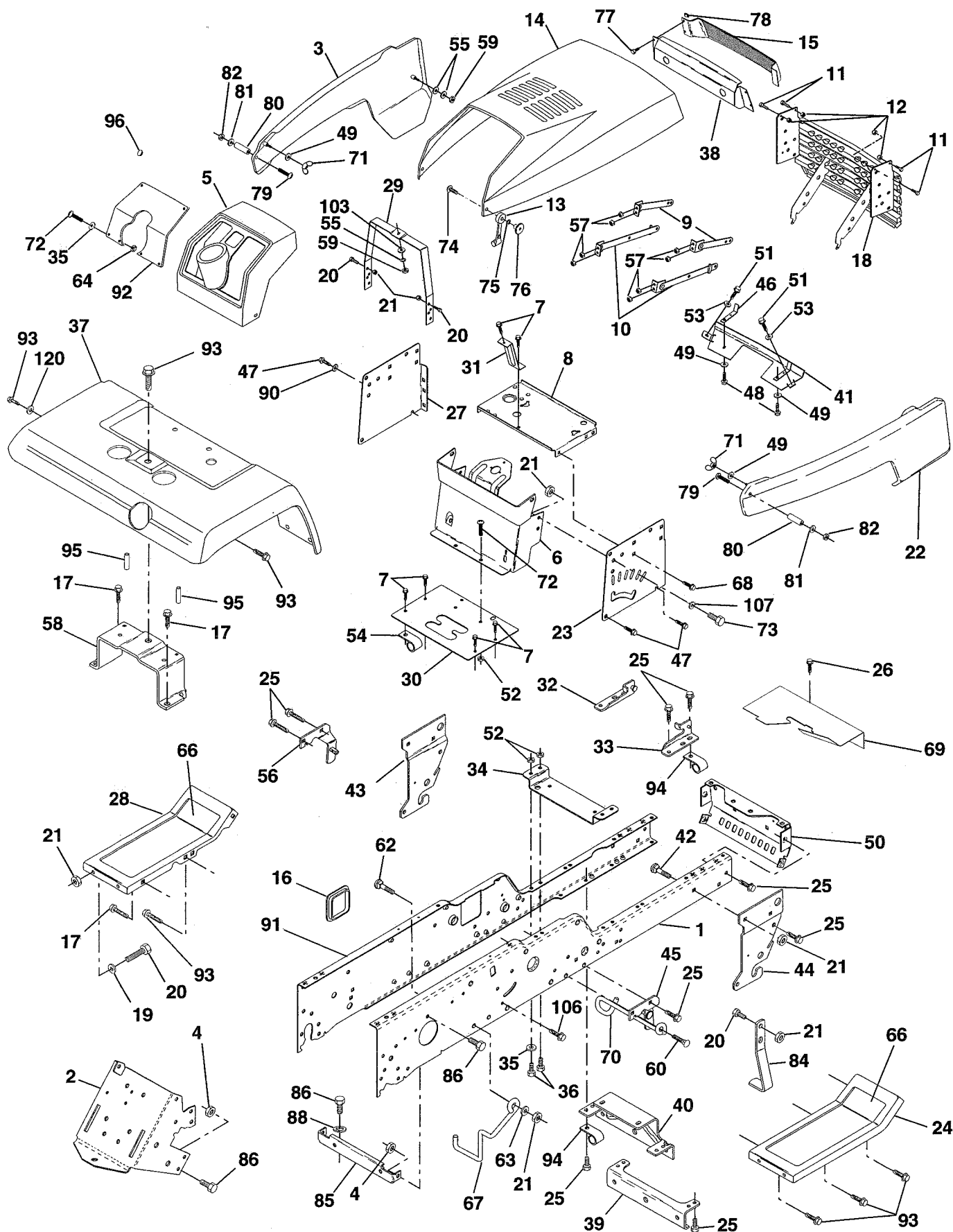
KEY NO.	PART NO.	DESCRIPTION
1	121537X	Battery
2	74760412	Bolt Hex Head 1/4-20 x 3/4
3	10040400	Washer, Lock 1/4
4	19091016	Washer 9/32 x 5/8 x 16 Ga
5	121264X	Caps, Battery
6	73220400	Nut Fin Hex 1/4-20
7	7697J	Tube Plastic
8	7603J	Tray, Battery
9	109596X	Clamp, Hose
10	72240460	Bolt, Carriage 1/4-20 x 7-1/2
11	102476X	Guard Terminal
12	123198X	Nut, Wing 1/4-20
19	10090400	Washer, Lock 1/4
20	73350400	Nut, Jam Hex 1/4-20
21	127441X	Harness Socket Light
22	4152J	Bulb Light
23	11150400	Washer, Lock Int. Tooth 1/4
24	4799J	Cable, Starter
25	4206J	Cable, Battery
26	108824X	Fuse
28	4207J	Cable, Ground
29	121305X	Switch, Plunger
30	140399	Switch, Ign
31	140400	Nut, Ignition Switch
32	141226	Cover Switch Key
33	140401	Key
34	110712X	Switch, Light
37	109553X	Intlk Switch
40	143064	Harness Ign.
41	17720408	Screw 1/4-20 x 1/2
42	131563	Cover, Terminal Red
43	138406	Solenoid
46	110940X	Meter, Hour
47	17011008	Screw #10 - 24 x 1/2
50	140404	Switch, PTO
51	140405	Ring Retainer PTO
53	71031008	Screw Hex Washer Hd #10-32 x 1
54	73951000	Nut Keps #10-32
61	138101	Light Pkg Asm #5
62	110143X	Bulb, Light Pkg.

NOTE: All component dimensions given in U.S. inches
1 inch = 25.4 mm

REPAIR PARTS

20 HP 50" TRACTOR - - MODEL NUMBER YE2050A

CHASSIS AND ENCLOSURES



REPAIR PARTS

20 HP 50" TRACTOR - - MODEL NUMBER YE2050A

CHASSIS AND ENCLOSURES

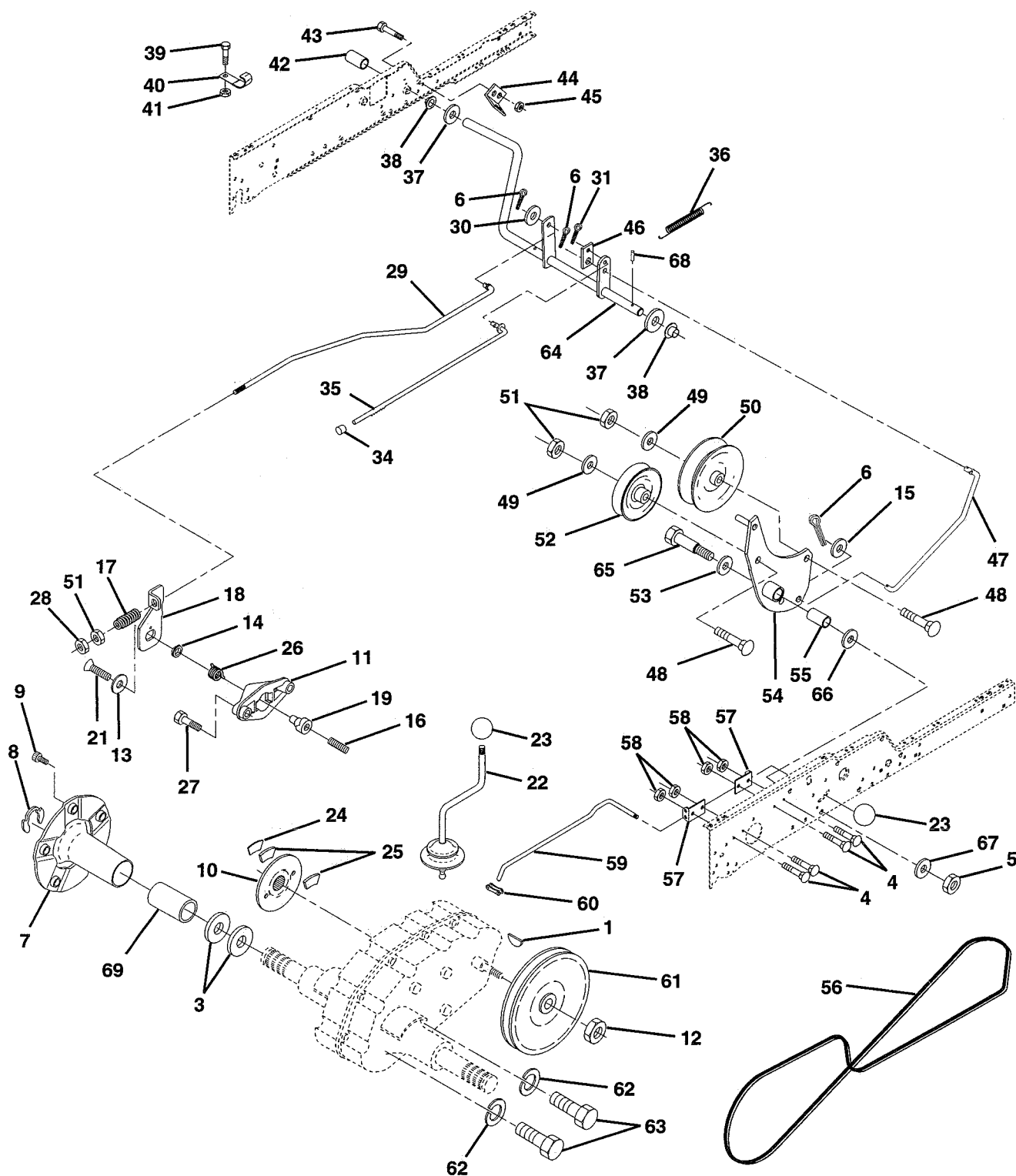
KEY NO.	PART NO.	DESCRIPTION	KEY NO.	PART NO.	DESCRIPTION
1	140505	Rail, Frame RH	48	17490512	Screw, Thdrol 5/16 - 18 x 3/4
2	140506	Drawbar, Gt	49	19131210	Washer 13/32 x 3/4 x 10 Ga.
3	140678X505	Panel Asm., Side LH	50	136575	Bracket, Chassis Front
4	73800700	Nut, Lock Hex 7/16 Unc	51	17490412	Screw H Wsh 1/4 - 20 x 3/4
5	140398	Dash, Plastic Black	52	73800500	Locknut, Hex W/Ins 5/16-18 Unc
6	140638	Dash Asm., Lower	53	19091016	Washer 9/32 x 5/8 x 16 Ga.
7	17720408	Screw, Thd Cut 1/4-20 x 1/2	54	126470X	Clip, Insulated
8	140229	Support, Battery	55	19091216	Washer 9/32 x 3/4 x 16 Ga.
9	104618X	Strap, Asm. Hinge Front	56	138461	Bracket Asm., Susp Chassis Lh
10	106784X	Strap, Asm. Hinge Rear	57	73510400	Nut, Keps H 1/4 - 20
11	123481X	Bolt Shoulder 1/4-20	58	137113	Bracket Asm., Fender
12	73800400	Nut, Lock W/Ins 1/4-20	59	73220400	Nut, Fin Hex 1/4-20
13	109808X	Latch, Chute Blk	60	17490620	Screw Thdrol 3/8-16 x 1-1/4
14	132635X505	Hood Asm., Pnt	62	72110608	Bolt, Carriage 3/8-16 x 1 Gr. 5
15	106395X	Lens, Headlight Bar, Clear	63	19131614	Washer 13/32 x 3/4 x 14 Ga.
16	121794X	Cover, Access	64	73510500	Nut 5/16-18
17	17490612	Screw, Thdrol 3/8-16 x 3/4	66	133671	Pad, Footrest
18	140037	Grille	67	140737	Guide, Belt
19	19131312	Washer 13/32 x 13/16 x 12 Ga.	68	17490508	Screw, Thdrol 5/16-18 x 1/2
20	74760616	Bolt, Fin Hex 3/8-16 x 1	69	140022	Shield, Heat
21	73800600	Nut, Lock Hex W/Wsh 3/8-16 Unc	70	137159	Guide, Belt Mid Span
22	140679X505	Panel Asm., Side RH	71	123198X	Nut, Plastic Locking Wing 1/4-20
23	121045X	Panel, Dash Side RH	72	74180512	Screw, Mach Thrd 5/16-18 x 3/4
24	105464X505	Footrest, RH	73	74780616	Bolt, Fin Hex 3/8-16 x 1 Gr. 5
25	17490612	Screw, Thdrol 3/8-16 x 3/4	74	74191008	Screw, Machine #10-24
26	17490512	Screw, Thdrol 5/16-18 x 3/4	75	10071000	Washer, Lock #10
27	121046X	Panel, Dash Side LH	76	2029J	Nut, Weld #10-24
28	105465X505	Footrest, LH	77	104755X	Fastener 'J'
29	124130X	Bracket, Support Dash	78	17211010	Screw H #10 - 16 x 5/8
30	137143X014	Saddle, Silscr Vgt	79	74981020	Screw, Machine #10-24 x 1/4
31	137556	Brace, Support Steering	80	7206J	Spacer, Split
32	141315	Bracket Asm., Frame Pivot Lh	81	19070818	Washer 7/32 x 1/2 x 18 Ga.
33	141314	Bracket Asm., Frame Pivot Rh	82	73731000	Nut #10-24
34	136963	Bracket, Engine Support Rear	84	138952	Stop, Over Center Mower
35	19111116	Washer 11/32 x 11/16 x 16 Ga.	85	120404X	Bracket, Support
36	74780512	Bolt, Fin Hex 5/16-18 x 3/4	86	74760716	Bolt, Fin Hex 7/16-14 Unc x 1
37	121642X505	Fender, Pnt.	88	10040700	Washer, Lock Hvy Hld Sp 7/16
38	124392X	Bezel, Asm.	90	11050600	Washer, Lock External Tooth 3/8
39	136961	Bracket, Axle Front	91	140504	Rail, Frame Lh
40	136962	Bracket, Support Axle/Engine	92	140130X012	Plate, Silkscreen Dash
41	105419X505	Strap, Grille	93	17490608	Screw, Thdrol 3/8-16 x 1/2
42	72140608	Bolt, Carriage 3/8-16 x 1	94	100207K	Clip, Fuel Line
43	136939	Bracket, Spnsn Front Lh	95	105531X	Push Nut, Nylon
44	136940	Bracket, Spnsn Front Rh	96	8022J	Plug, Hole
45	138460	Bracket Asm., Susp Chassis Rh	103	10040400	Washer, Lock 1/4
46	132644	Bracket, Grille	106	17580520	Screw Thdrol 5/16 - 18 x 1-1/4
47	17490608	Screw Thdrol 3/8-16 x 1/2	107	19131614	Washer 13/32 x 1 x 14 Ga.
			120	19131616	Washer 13/32 x 1 x 16 Ga.

NOTE: All component dimensions given in U.S. inches
1 inch = 25.4 mm

REPAIR PARTS

20 HP 50" TRACTOR - - MODEL NUMBER YE2050A

GROUND DRIVE



REPAIR PARTS

20 HP 50" TRACTOR - - MODEL NUMBER YE2050A

GROUND DRIVE

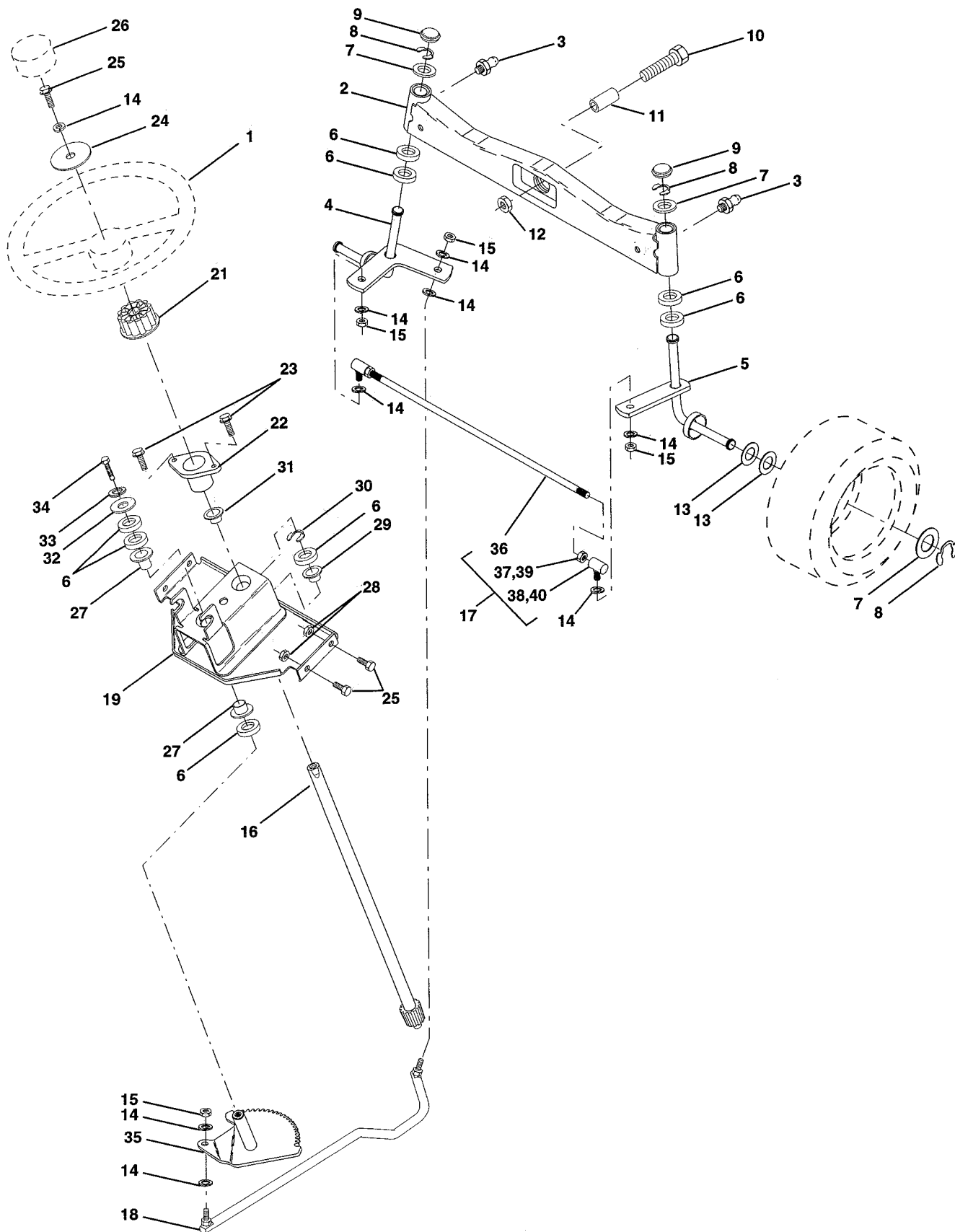
KEY NO.	PART NO.	DESCRIPTION	KEY NO.	PART NO.	DESCRIPTION
1	9858M1	Key Woodruff	37	121749X	Washer 25/32 x 1-1/4 x 16 Gauge
3	7563R	Washer Thrust Axle Harden	38	110895X	Nyliner
4	72140506	Bolt Carriage 5/16 - 18 x 3/4	39	74321016	Screw Fin #10-24 x 1
5	73680600	Nut Crownlock 3/8-16	40	5304J	Actuator Interlock Switch
6	76020412	Pin Cotter 1/8 x 3/4	41	73631000	Nut Lock #10-24
7	135758	Wheel Hub Asm.	42	8883R	Cover Pedal
8	12000034	Ring Klip	43	74760412	Bolt Hex Head 1/4-20 x 3/4
9	140080	Bolt Hub	44	104601X	Bracket Interlock
10	143046	Disc Brake	45	73800400	Nut Lock W/Insert 1/4-20
11	136927	Yoke Brake Disc	46	121358X	Retainer Spring
12	9204H	Locknut 1/2-20	47	138228	Clutch Rod
13	139419	Washer Special	48	72110614	Bolt Carriage 3/8-16 x 1-3/4 Gr 5
14	138901	Bushing	49	19131413	Washer 13/32 x 7/8 x 13 Ga
15	19131316	Washer 13/32 x 13/16 x 16 Ga	50	131494	Pulley Idler Flat
16	143012	Set Screw 1/4-28 x 3/4	51	73800600	Nut Lock Hex 3/8-16
17	126909X	Spring	52	139123	Pulley Idler Grooved
18	137104	Lever Brake	53	207J	Washer Hardened
19	136926	Cam Brake Disc	54	138390	Clutch Arm Asm
21	23260412	Screw Flat Head 1/4-28 x 3/4	55	105706X	Bearing, Idler
22	633A109	Gearshift Lever Assembly	56	137153	V-Belt
23	121466X	Knob	57	105598X	Bracket Shift Rod Hi-Lo
24	136925	Support Puck Brake	58	73800500	Locknut Hex W/Ins 5/16-18
25	136923	Puck Brake Top	59	122253X	Shift Rod Hi-Lo
26	137552	Spring Return	60	122268X	Spring Clip Connecting Link
27	17490528	Screw Hex Wsh Thd 5/16-18 x 1-3/4	61	137524	Pullery Transaxle
28	73350600	Nut Hex Jam 3/8-16	62	10040700	Washer Lock 7/16
29	137213	Brake Rod	63	74760720	Bolt Fin Hex 7/16-14 x 1-1/4
30	19131614	Washer 13/32 x 1 x 14Ga	64	137649	Shaft Clutch/Brake Pedal
31	76020312	Pin Cotter 3/32 x 3/4	65	67609	Bolt Shoulder
34	71673	Cap Plunger	66	140296	Washer Hardened
35	137648	Rod Parking Brake	67	19131312	Washer 13/32 x 13/16 x 12 Ga.
36	138364	Spring Extension	68	5142H	Pin Roll
			69	136327	Hub Cover

NOTE: All component dimensions given in U.S. inches
1 inch = 25.4 mm

REPAIR PARTS

20 HP 50" TRACTOR - - MODEL NUMBER YE2050A

STEERING ASSEMBLY



REPAIR PARTS

20 HP 50" TRACTOR - - MODEL NUMBER YE2050A

STEERING ASSEMBLY

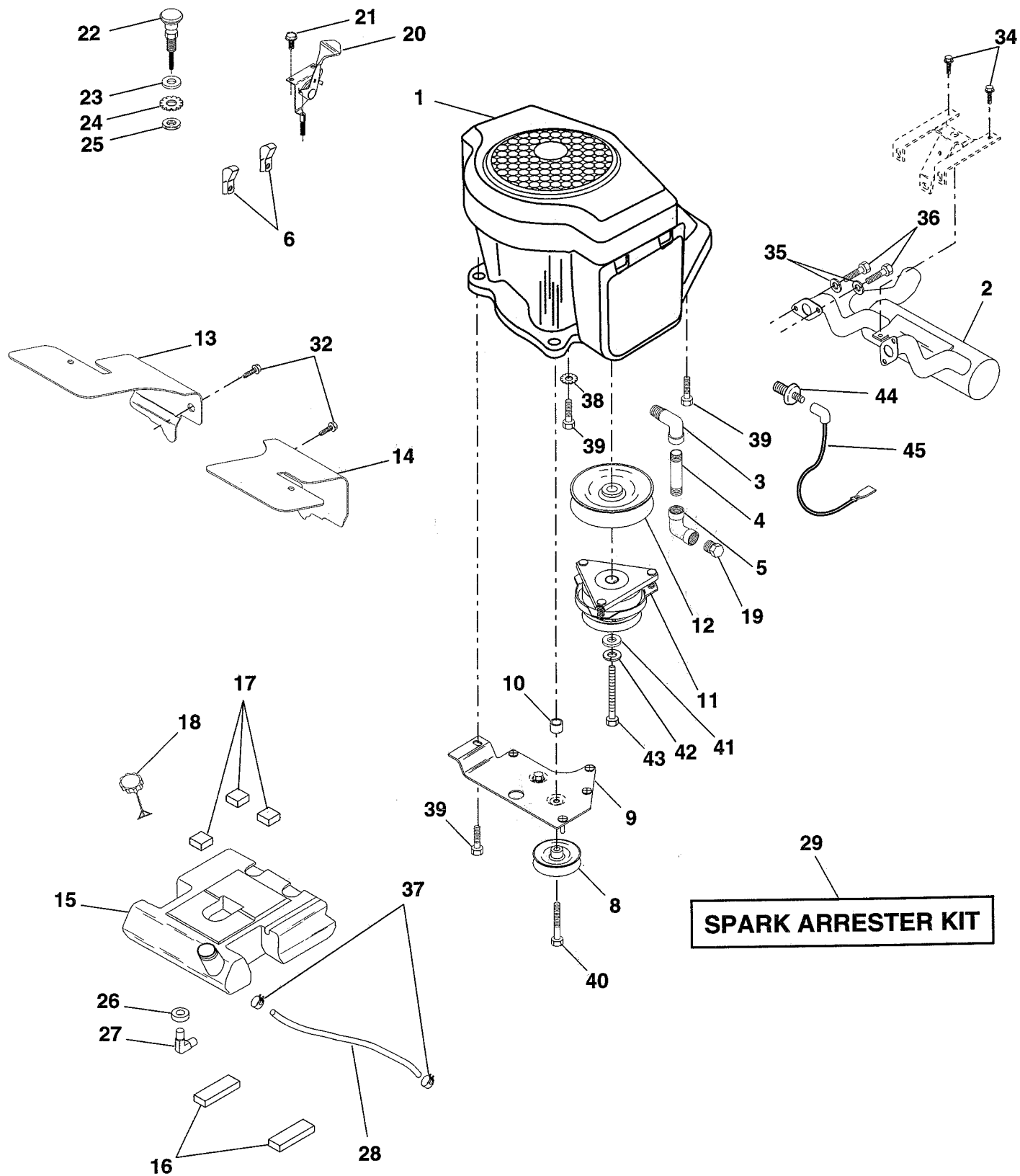
KEY NO.	PART NO.	DESCRIPTION
1	121472X	Wheel, Steering
2	137094	Axle Asm., Front
3	6855M	Fitting, Grease
4	136960	Spindle Asm, LH
5	136959	Spindle Asm., RH
6	6266H	Bearing, Race Thrust Harden
7	121748X	Washer 25/32 x 1-5/8 x 16 Ga.
8	12000029	Ring, Klip #T5304-75
9	121232X	Cap, Spindle
10	74781044	Bolt, Fin Hex 5/8-11 x 2-3/4
11	136518	Spacer, Brg. Axle Front
12	73901000	Nut, Lock Flange 5/8-11 Unc
13	121749X	Washer 25/32 x 1-1/4 x 16 Ga.
14	10040600	Washer, Lock Hvy Hlcl Spr 3/8
15	73610600	Nut, Fin Hex 3/8-24 Unf
16	104591X	Shaft Asm., Steering
17	137347	Rod Asm., Tie Ball J Ball Vgt (Inc. Key No. 36-40)
18	137155	Draglink, Ball Joint Solid Vgt
19	138053	Support Asm., Steering Vgt
21	100711L	Adapter, Wheel Steering
22	1554J	Bushing, Strg. Blk
23	17431008	Screw, Slftp #10-16 x 1/2 Ty-b
24	19133808	Washer 13/32 x 2-3/8 x 8 Ga.
25	74780616	Bolt, Fin Hex 3/8-16 x 1 Gr. 5
26	121584X	Cap, Wheel Steering
27	3366R	Bearing, Col. Strg.
28	73800600	Nut, Lock Hex W/Wsh 3/8-16 Unc
29	104239X	Bearing, Flange
30	12000034	Ring, Klip Truarc #5304-75
31	138136	Bushing, Nyliner Snap
32	19111610	Washer 11/32 x 1 x 10 Ga.
33	10040500	Washer, Lock Hvy Hlcl Spr 5/16
34	74760512	Bolt, Hex Hd 5/16-18 x 3/4
35	138059	Gear, Sector Steering
36	137156	Tie Rod
37	73360600	Jam Nut RH Thread
38	109850X	Joint Asm. Ball RH Thread
39	73700600	Jam Nut LH Thread
40	109851X	Joint Asm. Ball LH Thread

NOTE: All component dimensions given in U.S. inches
1 inch = 25.4 mm

REPAIR PARTS

20 HP 50" TRACTOR - - MODEL NUMBER YE2050A

ENGINE



REPAIR PARTS

20 HP 50" TRACTOR - - MODEL NUMBER YE2050A

ENGINE

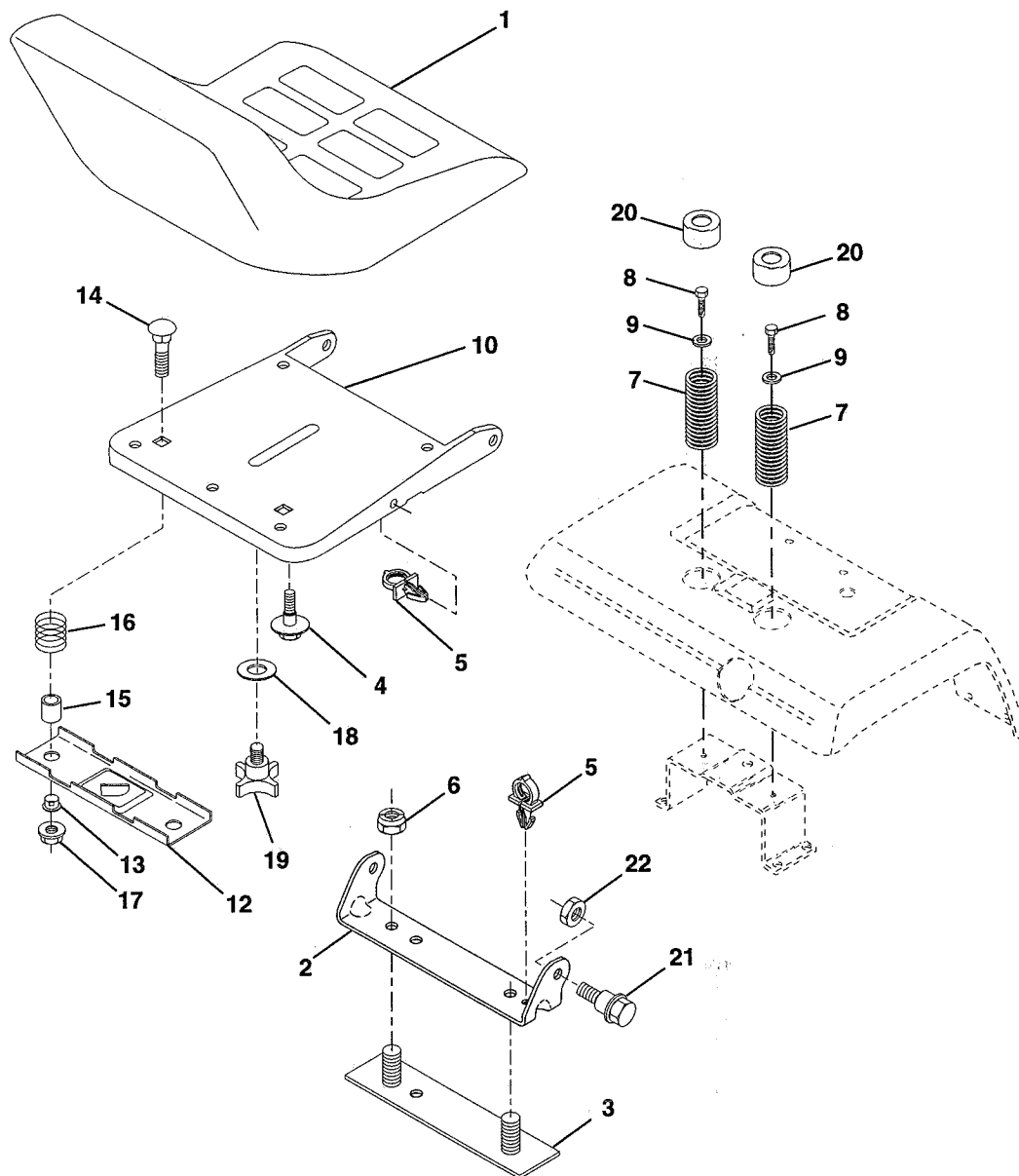
KEY NO.	PART NO.	DESCRIPTION
1	-----	Engine Kohler, Model No. MV20 PS-57528
2	139214	Muffler Asm Kohler VGT (Inc. Key No. 34)
3	13240300	Elbow Street 3/8 NPT
4	13280328	Nipple Pipe 3/8NPT X 3 - 1/2
5	13200300	Elbow STD 90 Degree 3/8 - 18 NPT
6	138129	Clamp Tube Double Engine
8	121361X	Pulley V-Idler
9	138559	Stop Keeper Asm VGT
10	105432X	Bushing
11	137140	Clutch Electric
12	136907	Pulley Engine VGT Elect Clutch
13	138486	Baffle Air LH Koh VGT
14	138487	Baffle Air RH Koh VGT
15	141069	Tank Fuel W/Sym Vented
16	109227X	Pad Spacer
17	106082X	Pad Spacer
18	140527	Cap Asm Fuel W/Sym Vented
19	13290300	Plug Oil Drain (Order From Engine Manufacturer)
20	142168	Control Throttle
21	17720410	Screw Hex Thd Cut 1/4 - 20 X 5/8
22	138672	Control Choke
23	19131316	Washer 13/32 X 13/16 x 16 Ga
24	11050600	Washer Ext Tooth 3/8
25	73610600	Nut Fin Hex 3/8 - 24 UNF
26	3645J	Bushing
27	139277	Stem Tank Fuel
28	7834R	Fuel Line
29	132920	Spark Arrester Kit
32	17490508	Screw Thdrol 5/16 - 18 X 1/2
34	17720408	Screw Thd Cut 1.4 - 20 x 1/2
35	10040500	Washer Lock 5/16
36	74570512	Screw Hex 5/16 - 16 UNC X 3/4
37	123487X	Clamp Hose
38	11050600	Lockwasher Ext Tooth 3/8
39	17490624	Screw Thdrol 3/8 - 16 X 1 - 1/2 TT
40	17490652	Screw Thdrol 3/8 - 16 X 3 - 1/4
41	126197X	Washer 1-1/2 OD X 15/32 ID X .250
42	10040700	Washer Lock 7/16
43	71170768	Bolt Hex 7/16-20 X 4-1/4 Ga 5
44	142320	Switch, Oil Sentry Kohler
45	142321	Wire, Lead Sentry Kohler

NOTE: All component dimensions given in U.S. inches
1 inch = 25.4 mm

REPAIR PARTS

20 HP 50" TRACTOR - - MODEL NUMBER YE2050A

SEAT ASSEMBLY



KEY NO.	PART NO.	DESCRIPTION
1	127429X	Seat
2	140551	Bracket, Pivot Seat
3	140675	Strap, Fender
4	127018X	Bolt, Shoulder 5/16-18 X .62
5	140407	Clip, Push In
6	73800600	Locknut 3/8-16 Unc
7	124181X	Spring, Seat Cprsn
8	17490508	Screw, Thdrol 5/16-18 X 1/2
9	19131614	Washer 13/32 X 1 X 14 Ga.
10	140552	Pan, Seat
12	121246X	Bracket, Mounting Switch
13	121248X	Bushing, Snap

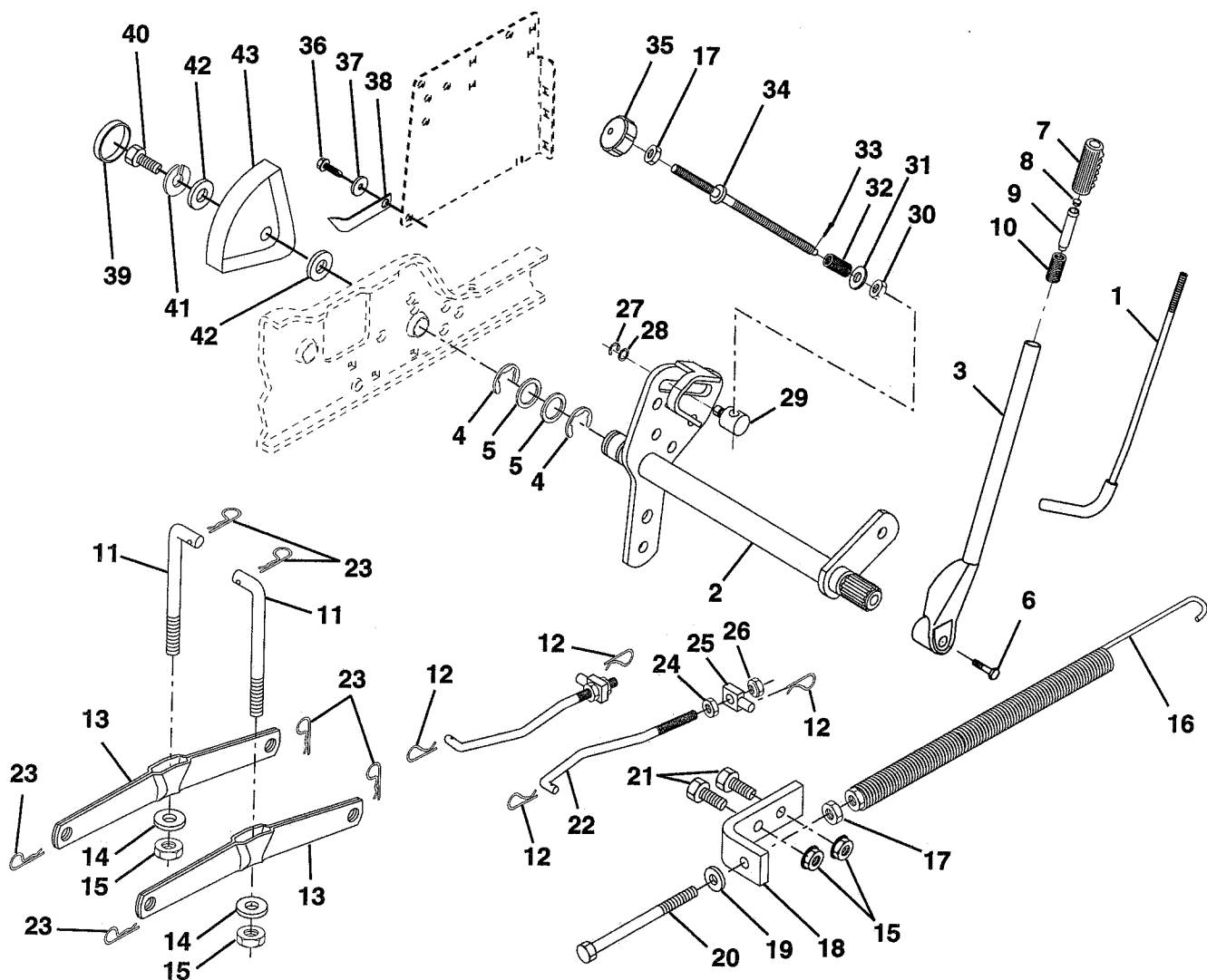
KEY NO.	PART NO.	DESCRIPTION
14	72050411	Bolt, Carriage 1/4-20 X 1-3/8
15	121249X	Spacer, Split
16	123740X	Spring, Cprsn
17	123976X	Nut, Lock 1/4 Lge Flg Gr. 5
18	19171912	Washer 17/32 X 1-3/16 X 12 Ga.
19	120068X	Knob, Seat 1/2-13 Unc
20	124238X	Cap, Spring Seat
21	139888	Bolt, Shoulder 5/16-18 Unc
22	73680500	Nut, Crownlock 5/16-18 Unc

NOTE: All component dimensions given in U.S. incl
1 inch = 25.4 mm

REPAIR PARTS

20 HP 50" TRACTOR - - MODEL NUMBER YE2050A

LIFT ASSEMBLY



KEY NO.	PART NO.	DESCRIPTION
1	121006X	Rod Asm., Lever
2	137295	Shaft Asm., Lift Vgt
3	121002X	Lever Asm., Lift Rh
4	12000022	E-Ring Truarc #5133-87
5	19292016	Washer 29/32 x 1-1/4 x 16 Ga.
6	74780624	Bolt, Fin Hex 3/8-16 x 1-1/2
7	109413X	Grip, Handle Bicycle
8	124526X	Button, Plunger
9	122364X	Plunger, Lever Lift
10	2876H	Spring 2-1/8"
11	142369	Link Lift
12	3146R	Retainer, Spring
13	139867	Arm, Suspension Vgt
14	140302	Bearing
15	73800600	Nut, Lock Hex W/Wsh 3/8-16 Unc
16	674A247	Spring Asm., Assist Lift
17	73350600	Nut, Hex Jam 3/8-16 Unc
18	143363	Bracket, Spring Assist
19	19131316	Washer 13/32 x 13/16 x 16 Ga.
20	5328	Bolt, Adjust Spring Assist
21	74760616	Bolt, Fin Hex 3/8-16 x 1
22	27218	Link, Front
23	939M	Retainer, Spring

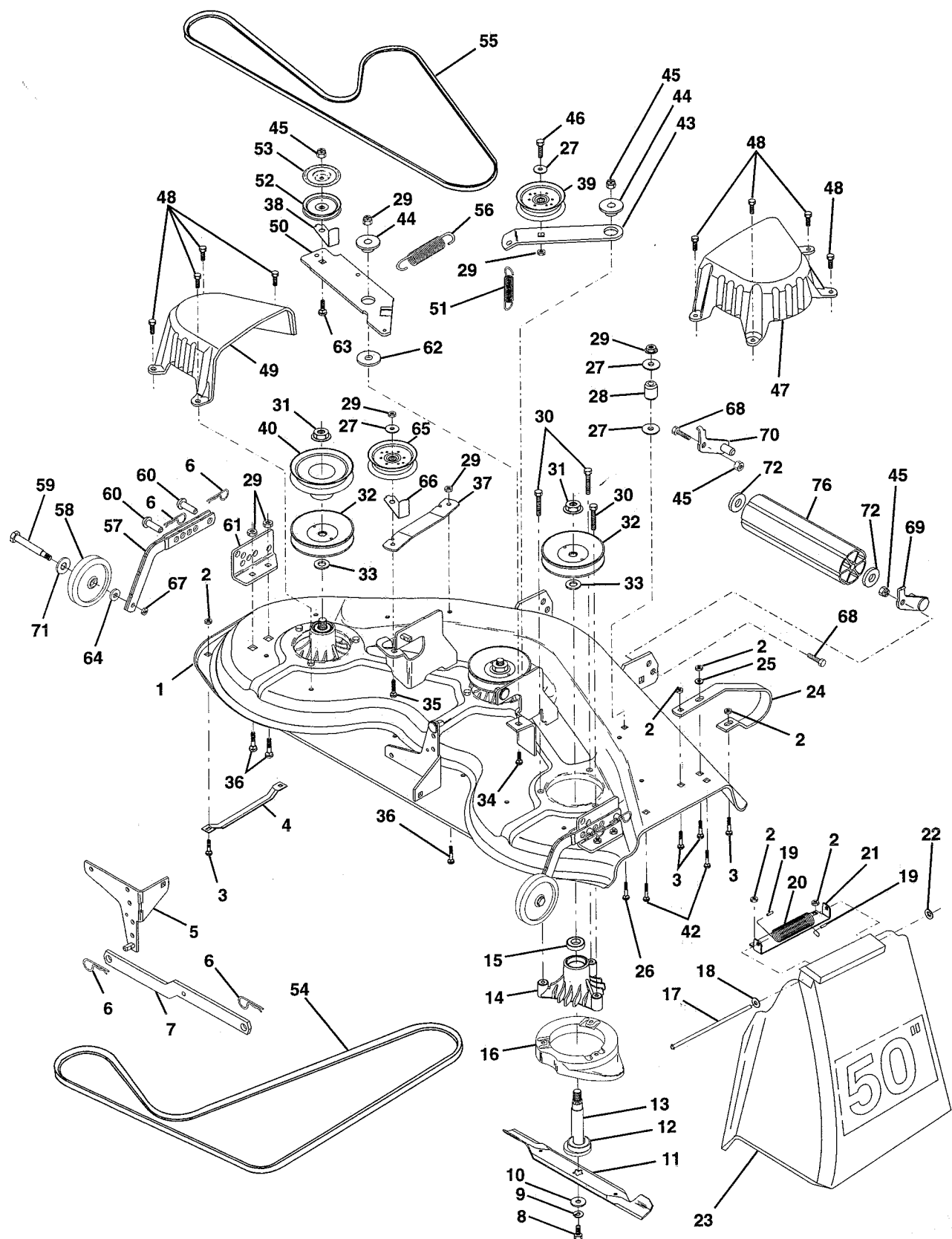
KEY NO.	PART NO.	DESCRIPTION
24	73350800	Nut, Jam Hex 1/2-13 Unc
25	130171	Trunnion
26	73800800	Nut, Lock W/Wsh 1/2-13 Unc
27	12000037	Ring, Klip #T5304-37
28	19151216	Washer 15/32 x 3/4 x 16 Ga.
29	110810X	Trunnion, Dp Stop Dbl Thds Plt
30	110807X	Nut, Special
31	19131016	Washer 13/32 x 5/8 x 16 Ga.
32	137150	Spring, Compression Inf Hgt
33	76020308	Pin, Cotter 3/32 x 1/2
34	137167	Rod, Adj Lift
35	138057	Knob, Inf 3/8-16 Unc
36	17490612	Screw, Thdrol 3/8-16 x 3/4
37	120529X	Washer, Nylon
38	123933X505	Pointer, Pnt Height Indicator
39	123935X	Plug, Hole
40	74780516	Bolt, Fin Hex 5/16-18 x 1
41	10040500	Washer, Lock Hvy Hlcl Spr 5/16
42	19112410	Washer 11/32 x 1-1/2 x 10 Ga.
43	123934X	Scale, Indicator Height

NOTE: All component dimensions given in U.S. inches
1 inch = 25.4 mm

REPAIR PARTS

20 HP 50" TRACTOR - - MODEL NUMBER YE2050A

MOWER DECK



REPAIR PARTS

20 HP 50" TRACTOR - - MODEL NUMBER YE2050A

MOWER DECK

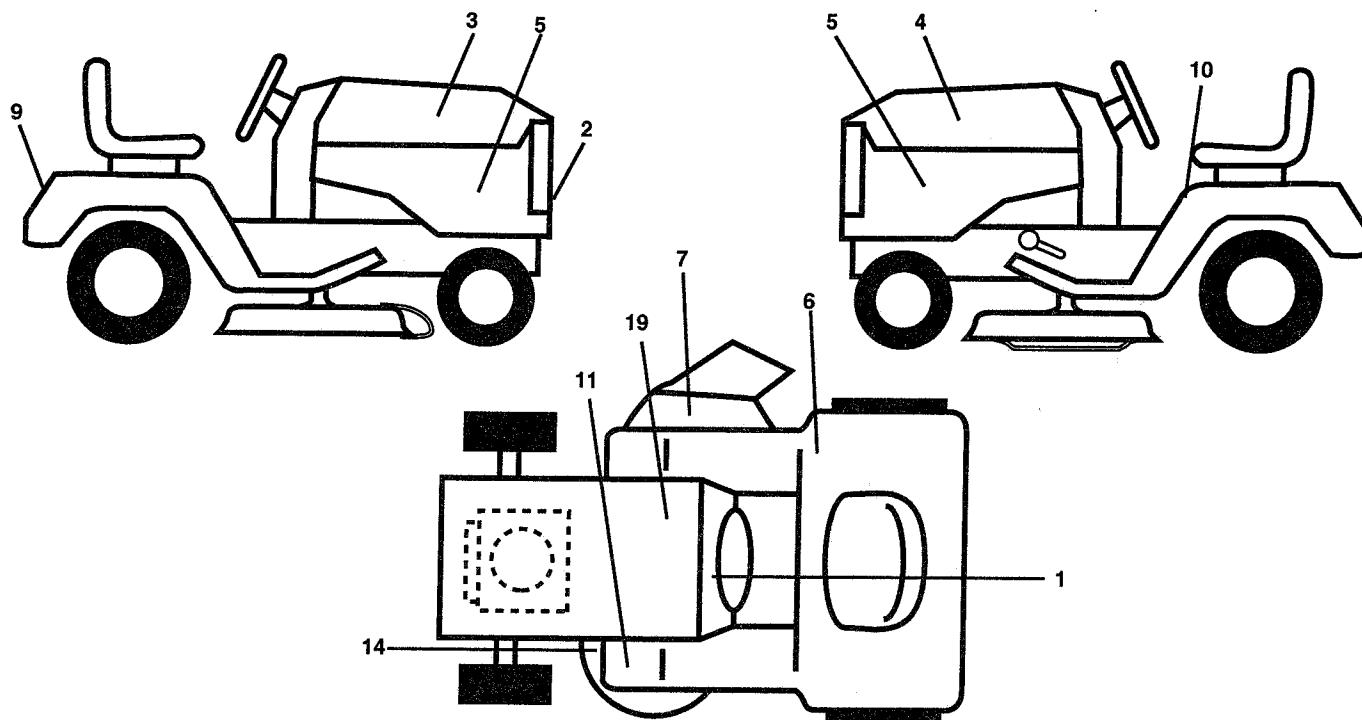
KEY NO.	PART NO.	DESCRIPTION	KEY NO.	PART NO.	DESCRIPTION
1	136457	Deck Asm., Mower 50" Vented	38	137554	Keeper, Belt Idler
2	73800500	Locknut, Hex W/Ins 5/16-18 Unc	39	131494	Pulley, Idler Flat
3	72110506	Bolt, Carriage 5/16-18 x 3/4	40	136572	Pulley, Driven
4	7631J	Runner, Mower LH	42	72140506	Bolt, Carriage 5/16-18 Unc x 3/4
5	138457	Bracket Asm., Sway Bar	43	136460	Arm, Idler Secondary
6	4939M	Retainer, Spring	44	122052X	Spacer, Retainer
7	130832	Arm Suspension, Rear	45	73680600	Nut, Crownlock 3/8-16 Unc
8	850857	Bolt 3/8-24 x 1.25 Gr. 8 Patched	46	74760628	Bolt, Fin Hex 3/8-16 Unc x 1-3/4
9	10030600	Washer, Lock Hvy 3/8 Unplated	47	137200	Cover, Mandrel RH
10	140296	Washer, Hard Blade Mower Vented	48	137729	Screw, Thd Roll 1/4-20 x 5/8
11	137380	Blade (3 Required)	49	136574	Cover, Mandrel LH
12	129895	Bearing, Ball #6204 (Mandrel)	50	137272	Arm, Idler Primary
13	137553	Shaft Asm., W/Lower Brg (Includes Key No. 12)	51	137273	Spring, Secondary
14	137152	Housing, Mandrel 50" Vent	52	139245	Pulley, Idler V Groove
15	110485X	Bearing, Ball Mandrel	53	137789	Shield, Idler
16	136929	Stripper, Mower Vented	54	139573	V-Belt, Mower Primary
17	106735X	Rod, Hinge	55	138255	V-Belt, Mower Secondary
18	19111016	Washer 11/32 x 5/8 x 16 Ga.	56	138687	Spring, Primary
19	105304X	Cap, Sleeve	57	136577	Bar Asm., Wheel Gauge
20	123713X	Spring, Torsion Deflector	58	105455X	Wheel, Gauge
21	137607	Bracket, Deflector	59	4898H	Bolt, Shoulder
22	110452X	Nut, Push	60	139031	Pin, Clevis
23	110509X	Shield, Deflector Mower	61	136573	Bracket, Wheel Gauge
24	136320	Runner, RH	62	133943	Washer Hardened
25	19111216	Washer 11/32 x 3/4 x 16 Ga.	63	72110612	Bolt Carriage 3/8-16 x 1-1/2
26	72110614	Bolt, Carriage 3/8-16 x 1-3/4 Gr. 5	64	19121414	Washer 3/8 x 7/8 x 14 Ga.
27	19131316	Washer 13/32 x 13/16 x 16 Ga.	65	102403X	Pulley Idler Flat Mower
28	132823	Spacer, Spring Stop Idler	66	139622	Keeper, Belt Idler 50" Vent
29	73800600	Nut, Lock Hex W/Wsh 3/8-16 Unc	67	73930600	Nut, Center Lock 3/8-16
30	138776	Screw Thdrol Hex Head	68	74760616	Bolt, Fin Hex 3/8-16 x 1
31	137266	Nut, Flg Top Lock Cntr 9/16	69	132273	Bracket, Asm. Noseroller RH
32	129861	Pulley, Mandrel	70	132274	Bracket, Asm. Noseroller LH
33	129963	Washer, Spacer Mower Vented	71	19171512	Washer 17/32 x 15/16 x 12 Ga.
34	72140610	Bolt, Carriage 3/8-16 x 1-1/4	72	19171416	Washer 17/32 x 7/8 x 16 Ga.
35	72110616	Bolt, Carriage 3/8-16 x 2	76	132264	Roller, Nose
36	72110608	Bolt, Carriage 3/8-16 x 1 Gr. 5			
37	137166	Stiffener, Arm Idler			

NOTE: All component dimensions given in U.S. inches
1 inch = 25.4 mm

REPAIR PARTS

20 HP 50" TRACTOR - - MODEL NUMBER YE2050A

DECALS



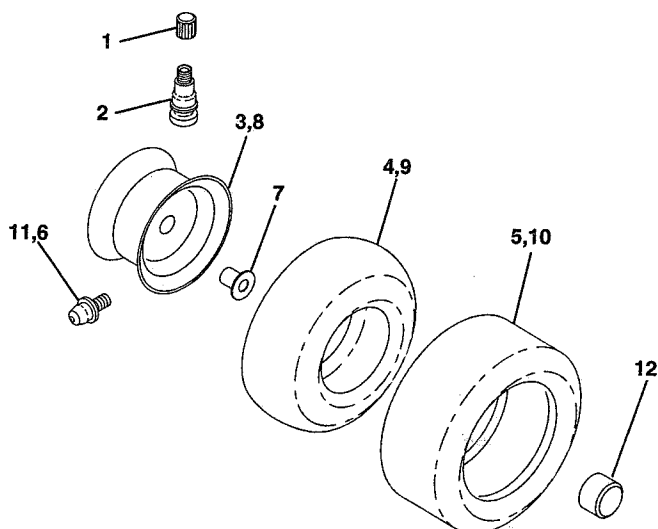
KEY NO.	PART NO.	DESCRIPTION
1	138956	Decal, Operating Instruction
2	139141	Decal, Grille
3	123966X	Decal, Hood, RH
4	123965X	Decal, Hood, LH
5	138445	Decal, Panel Sd. Estate Series
6	125027X	Decal, 105 DBA
7	137259	Decal, Warning Multi-Language
9	123964X	Decal, Fender
10	133795	Decal, Caution
11	101892X	Decal, Clutch/Brake
14	139346	Decal, V-Belt Schematic

KEY NO.	PART NO.	DESCRIPTION
19	121549X	Decal, Battery
--	142712	Manual, Owner's (English)
--	142714	Manual, Owner's (French)
--	138311	Decal, Handle Lft Height Adjust (Lift Handle)

Accessories not included with tractor:

--	SH10	Sleeve Hitch
--	TA128	Tire Chains
--	TR01	Grader Blade
--	TA321	#55 Wheel Weights
--	GSB42	Snow Blower
--	GBD48	Snow Blade

WHEELS & TIRES



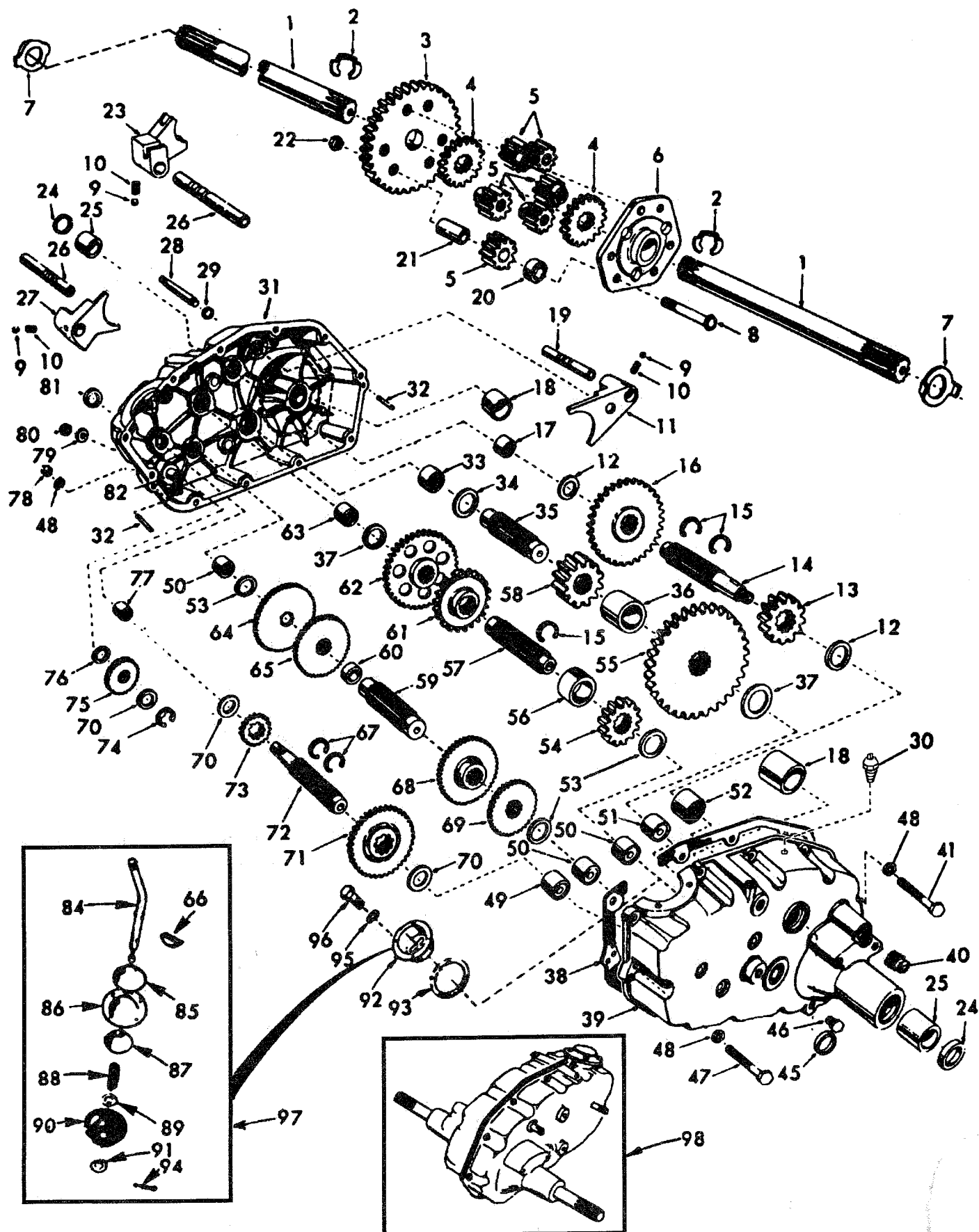
KEY NO.	PART NO.	DESCRIPTION
1	59192	Cap, Valve, Tire
2	65139	Stem, Valve
3	106228X417	Rim Assembly, Front
4	8134H	Tube, Front (Service Item Only)
5	106230X	Tire, Front
6	278H	Fitting, Grease
7	9040H	Bearing, Flange (Front Wheel Only)
8	106277X417	Rim Assembly, Rear
9	7154J	Tube, Rear (Service Item Only)
10	105588	Tire, Rear
11	6856M	Fitting, Grease
12	104757X	Cap, Hub

NOTE: All component dimensions given in U.S. inches
1 inch = 25.4 mm

REPAIR PARTS

20 HP 50" TRACTOR - - MODEL NUMBER YE2050A

TRANSAXLE



REPAIR PARTS

20 HP 50" TRACTOR - - MODEL NUMBER YE2050A

TRANSAXLE

KEY PART NO. NO.	DESCRIPTION	KEY PART NO. NO.	DESCRIPTION
1 4197R	Axle Shaft	52 8119M	Needle Bearing
2 12000034	Retaining Ring	53 4220R	Thrust Bearing Race
3 4199R	Final Drive Gear	54 4209R	3rd Reduction Pinion, Low
4 4216R	Differential Gear	55 4213R	4th Reduction Gear
5 4215R	Differential Pinion	56 4442R	3rd Reduction Pinion Spacer
6 4217R	Differential Carrier	57 4195R	2nd Reduction Gear Shaft
7 6256H	Axle Thrust Washer	58 4214R	Final Drive Pinion
8 74020652	Bolt, Hex Head 3/8-24 x 3-1/4 (1" Thread Length)	59 4194R	1st Reduction Gear Shaft
9 7392M	Steel Ball	60 7528R	1st Reduction Shaft Spacer
10 137261	Spring Shift Fork Detent	61 4208R	3rd Reduction Pinion High
11 4985R	Shift Fork, High-Low Range	62 4207R	2nd Reduction Gear
12 6266H	Thrust Bearing Race	63 7398H	Needle Bearing
13 4212R	4th Reduction Pinion	64 4203R	Low Speed Gear and 2nd Reduction Pinion Cluster
14 137125	Shaft, Brake	65 4204R	Reverse Gear
15 6276H	Snap Ring, Crescent Type	66 2898J	Key, Hi-Pro 1/8 x 17/32
16 633A63	High-Low Range Gears	67 12000033	Klip Ring
17 8118M	Needle Bearing	68 4205R	Intermediate Speed Gear
18 8740H1	Sintered Iron Bearing	69 4206R	High Speed Gear
19 122238X	Shift Fork Shaft, High-Low Range	70 1370H	Thrust Bearing Race
20 4218R	Differential Pinion Spacer	71 633A69	Intermediate and High Speed Cluster Pinions
21 6252H1	Differential Pinion Bushing	72 139120	Input Shaft
22 7810H	Gripco Centerlock Nut 3/8-24	73 4201R	Low Speed Pinion
23 6262H	Shift Fork, R.H.	74 12000008	E-Ring
24 7393R	Oil Seal	75 1153R	Reverse Idler Gear
25 992R1	Sintered Iron Bearing	77 6803J	Needle Bearing
26 139111	Shift Fork Shaft	79 1167R	Sealing Washer
27 4986R	Shift Fork, L.H.	80 73360700	Nut, Hex, Jam 7/16-20
28 122254X	Shift Shaft, High-Low Range	81 6270H	Oil Seal
29 6269H	Oil Seal	82 136984	Reverse Idler Shaft
30 5855H	Pressure Relief Valve	84 5384J	Gearshift Lever, Bent
31 139538	Gearcase, Reverse Idler Shaft and Bearings, R.H. (Includes Key No.'s 17, 18, 25, 33, 50, 63, 77 and 82)	85 2978J	Gearshift Cap
32 6277H	Dowel Pin	86 633A85	Gearshift Ball Cover and Pin
33 4225R	Needle Bearing	87 8739H1	Shift Lever Guide Ball, Keyed
34 7396H	Thrust Bearing Race	88 4924H	Spring
35 4198R	4th Reduction Gear Shaft	89 19151516	Washer 15/32 x 15/16 x 16 Gauge
36 4200R	4th Reduction Gear Spacer	90 110542X	Shift Mechanism Seal
37 7395H	Thrust Bearing Race	91 19181511	Washer 9/16 x 15/16 x 12 Gauge
39 139536	Gearcase and Bearings, L.H. (Includes Key Numbers 18, 25, 49, 50 (2), 51 and 52)	92 75J	Gearshift Gate and Reinforcement
40 13320400	Pipe Plug 1/2-14 N.P.T.	93 6274H	Shift Ball Cover Gasket
41 17580520	Bolt, Hex 5/16-18 UNC x 1-1/4	94 76020412	Cotter Pin 1/8 x 3/4
45 6271H	Oil Seal	95 10040500	Washer, Lock 5/16
46 13060200	Pipe Plug 1/4-18 N.P.T.	96 74760514	Bolt, Hex Head 5/16-18 UNC x 7/8
49 4895H	Needle Bearing	97 633A109	Gearshift Lever Assembly
50 4222R	Needle Bearing	98 140332	Transaxle Assembly (Less Brake Drum and Shift Lever)
51 1529R	Needle Bearing		

NOTE: All component dimensions given in U.S. inches
1 inch = 25.4 mm