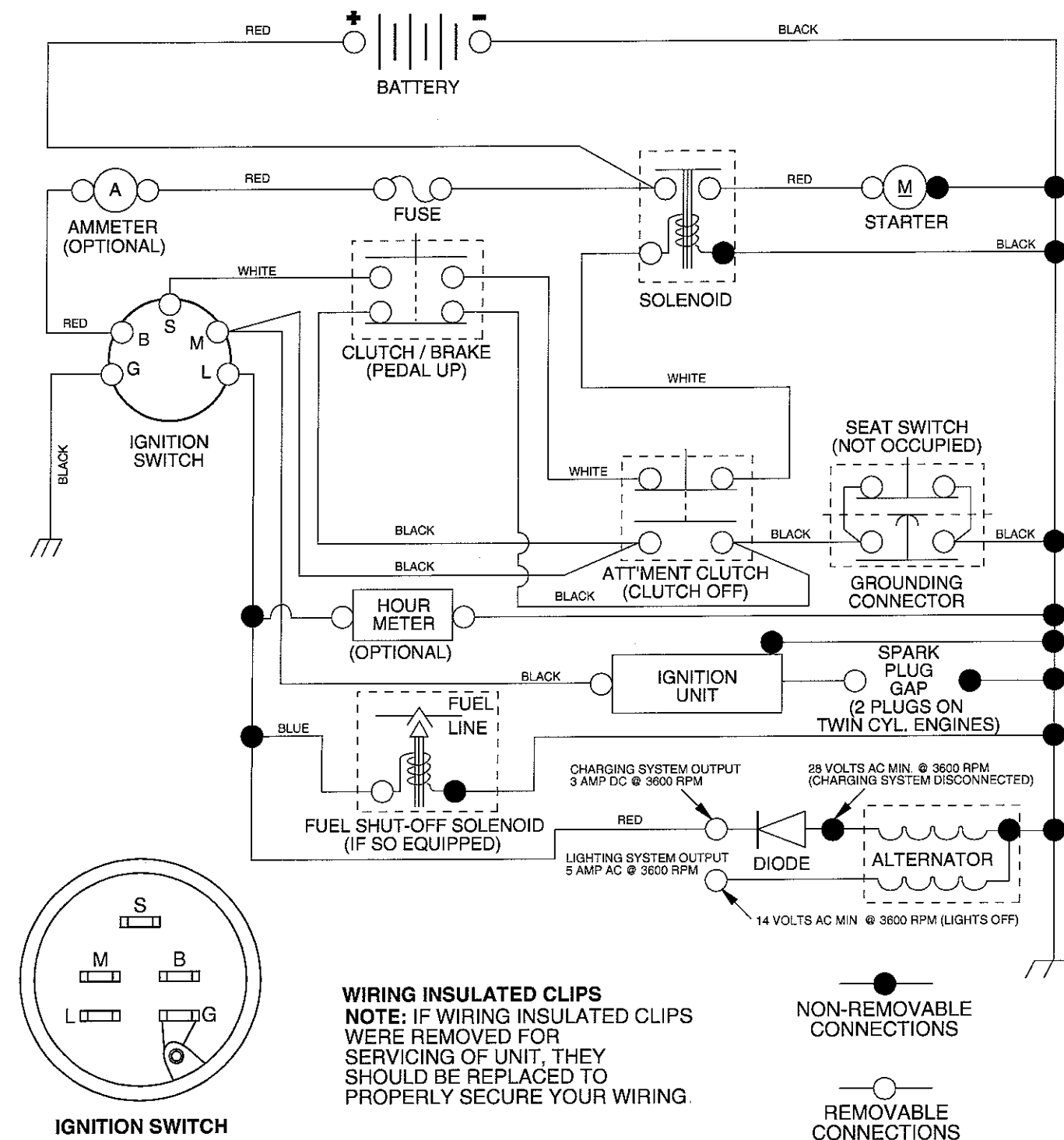


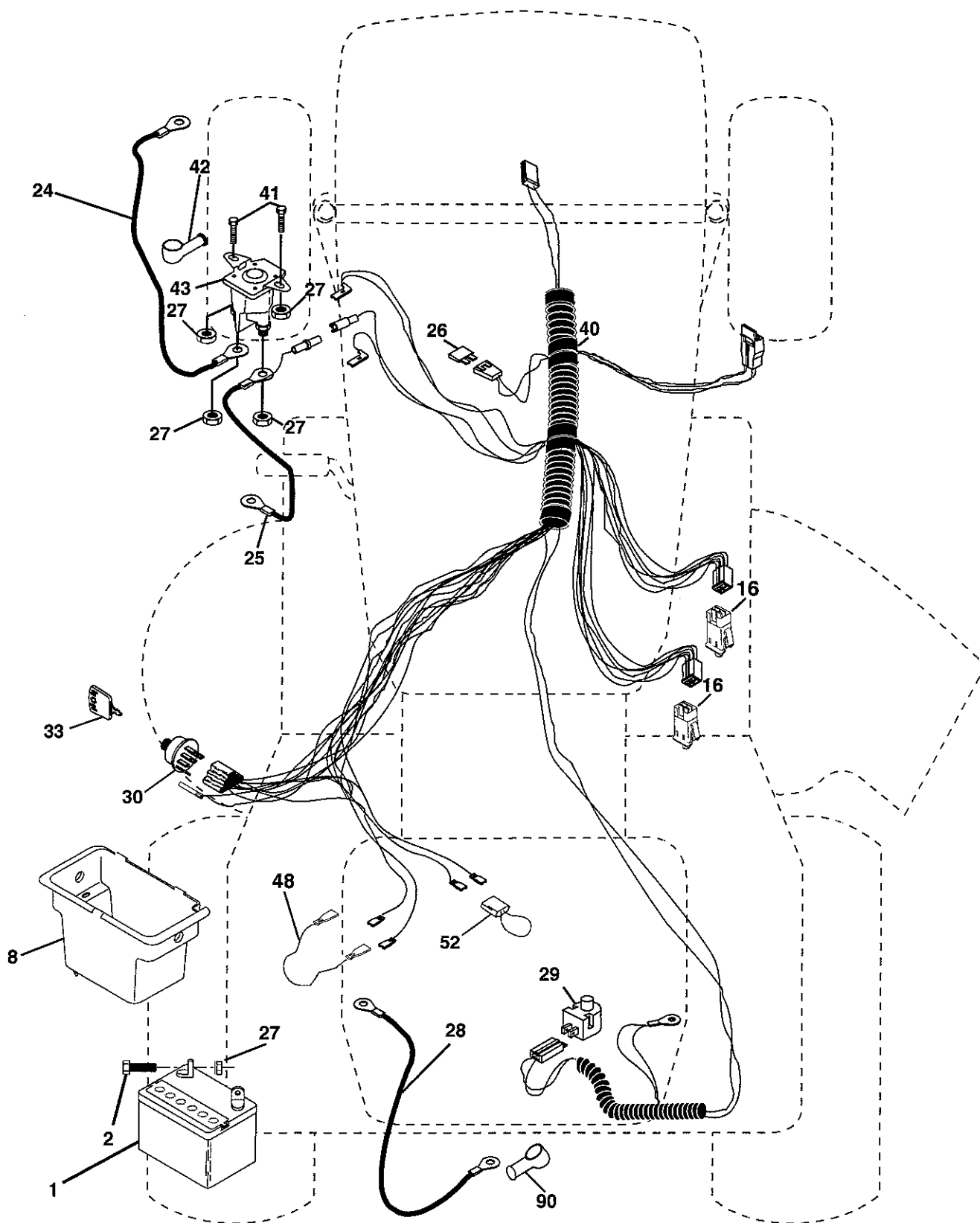
# REPAIR PARTS

TRACTOR - - MODEL NUMBER MC1136 (MC1136B), PRODUCT NO. 964 77 30-01  
SCHEMATIC



# REPAIR PARTS

TRACTOR - - MODEL NUMBER MC1136 (MC1136B), PRODUCT NO. 964 77 30-01  
ELECTRICAL



# REPAIR PARTS

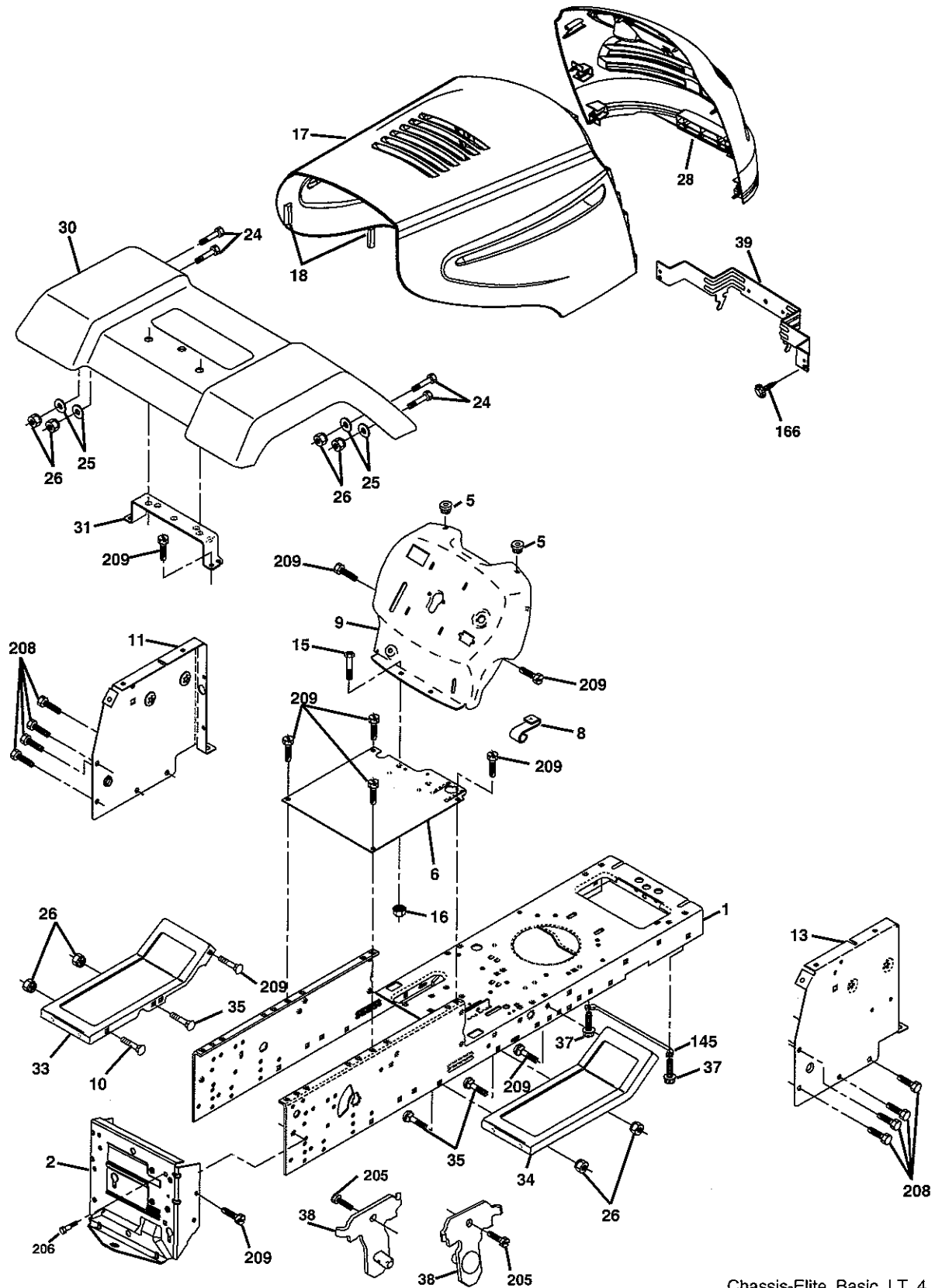
TRACTOR - - MODEL NUMBER MC1136 (MC1136B), PRODUCT NO. 964 77 30-01  
ELECTRICAL

KEY NO.	PART NO.	DESCRIPTION
1	532 16 34-65	Battery 12 Volt 25 Amp
2	874 76 04-12	Bolt Hex Hd 1/4-20 Unc x 3/4
8	532 17 66-89	Battery Box
16	532 17 61-38	Switch Interlock Push-In
24	532 00 47-99	Cable Battery 6 Ga. 44"/16W
25	532 14 61-47	Cable Battery
26	532 17 51-58	Fuse
27	873 51 04-00	Nut Keps Hex 1/4-20 Unc
28	532 12 47-73	Cable Ground 6 Ga 12"black
29	532 12 13-05	Switch Plunger Nc Gray
30	532 17 55-67	Switch Ign
33	532 14 04-01	Key Ign
40	532 17 97-30	Harness Ign
41	871 11 04-08	Bolt Blk Fin Hex 1/4-20
42	532 13 15-63	Cover Terminal Red
43	532 17 88-61	Solenoid
48	532 14 08-44	Adapter Ammeter
52	532 14 19-40	Protection Wire Loop
90	532 18 04-49	Cover Terminal Battery

**NOTE:** All component dimensions given in U. S.  
inches 1 inch = 25.4 mm.

# REPAIR PARTS

TRACTOR - - MODEL NUMBER MC1136 (MC1136B), PRODUCT NO. 964 77 30-01  
CHASSIS AND ENCLOSURES



Chassis-Elite\_Basic\_LT\_4

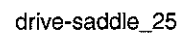
# REPAIR PARTS

TRACTOR - - MODEL NUMBER MC1136 (MC1136B), PRODUCT NO. 964 77 30-01  
CHASSIS AND ENCLOSURES

KEY NO.	PART NO.	DESCRIPTION
1	532 17 46-20	Chassis
2	532 17 65-54	Drawbar
5	532 15 52-72	Bumper, Hood/Dash
6	532 18 12-71	Saddle
8	532 15 51-38	Clip Retainer Slide-On
9	<b>532 19 39-34</b>	Dash
10	872 14 06-08	Bolt, Carriage 3/8-16 x 1
11	532 17 49-96	Panel Dash LH
13	532 18 69-52	Panel Silscr Dash RH
15	874 18 05-12	Screw Mach TRHD 5/16-18uncx3/4
16	873 51 05-00	Nut Keps 5/16-18 Unc
17	532 18 58-47	Hood
18	532 12 69-38	Bumper Hood
24	874 78 06-16	Bolt Fin Hex 3/8-16 Unc x 1 Gr. 5
25	819 13 13-12	Washer 13/32 x 13/16 x 12 Ga
26	873 80 06-00	Nut Lock Hex w/Ins 3/8-16 Unc
28	532 18 67-18	Grille
30	532 18 12-72	Fender
31	532 13 66-19	Bracket Fender Repl 109873x
33	532 18 30-81	Footrest Pnt LH
34	532 18 30-80	Footrest Pnt RH
35	872 11 06-06	Bolt Rdhd Sht Sqnk 3/8-16 x 3/4
37	817 49 05-08	Screw Thdrol 5/16-18 x 1/2 TYT
38	532 17 57-10	Bracket Asm. Pivot Mower Rear
39	532 17 47-14	Bracket Pivot
145	532 15 65-24	Rod Pivot Chassis/Hood
166	532 17 18-75	Screw Hwhd Hi-Lo #13-16 x 5/8
205	817 49 06-08	Screw Thdrol 3/8-16 x 1/2
206	532 17 01-65	Bolt Shoulder 5/16-18
208	817 67 06-08	Screw Thdrol 3/8-16 x 1/2
209	817 00 06-12	Screw Hex Wsh Thdrol 3/8-16
---	532 00 54-79	Plug Button Blk 359 Dia Choke
---	<b>532 19 39-35</b>	Plug Switch Light
---	<b>532 18 78-01</b>	Plug Dome Plastic

**NOTE:** All component dimensions given in U.S. inches  
1 inch = 25.4 mm.

**TRACTOR - - MODEL NUMBER MC1136 (MC1136B), PRODUCT NO. 964 77 30-01  
DRIVE**



# REPAIR PARTS

TRACTOR - - MODEL NUMBER MC1136 (MC1136B), PRODUCT NO. 964 77 30-01  
DRIVE

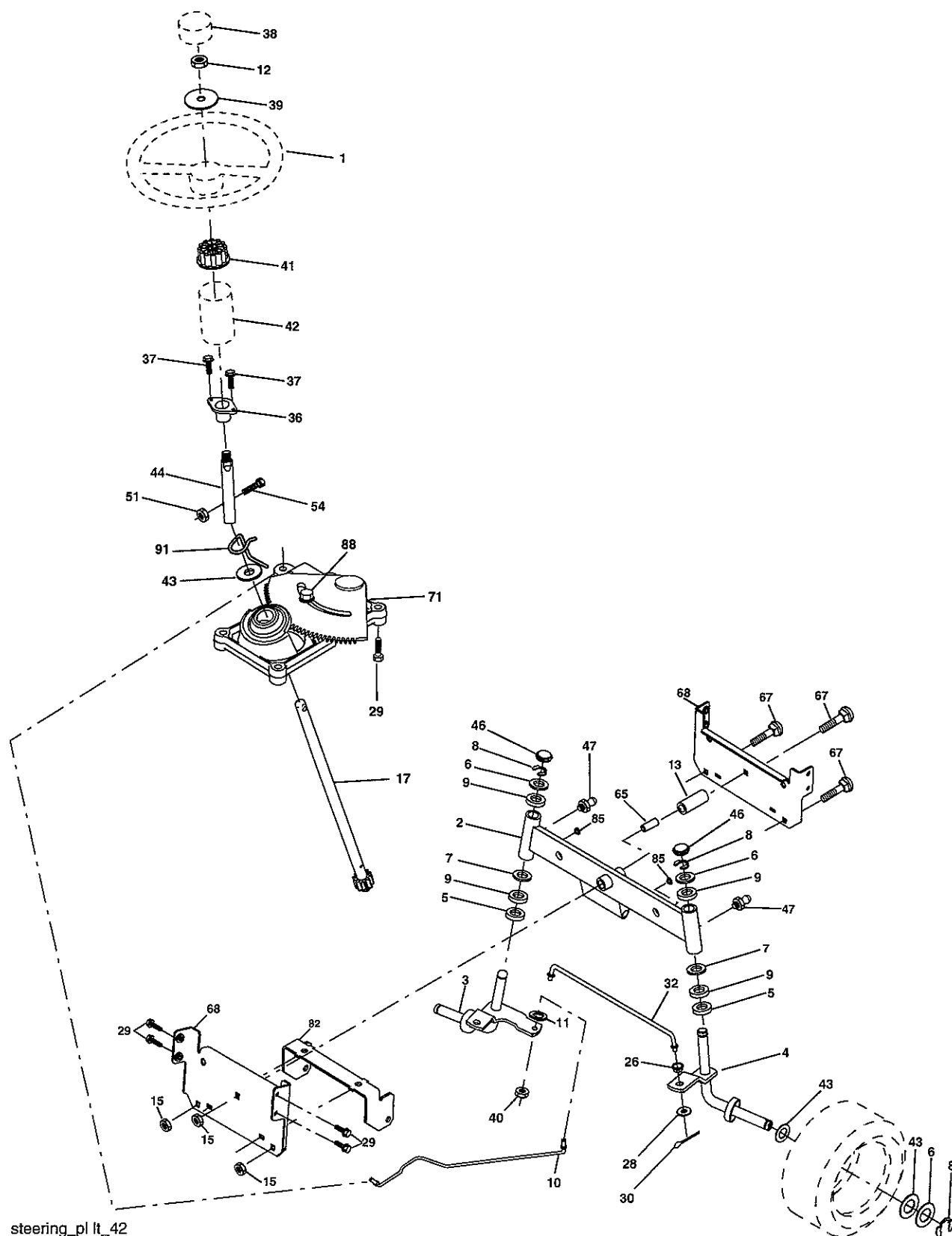
KEY NO.	PART NO.	DESCRIPTION
1	-----	Transaxle, Peerless 204-506B (Order parts from transaxle manu- facturer)
2	532 14 66-82	Spring Return Brake T/a Zinc
3	532 12 36-66	Pulley Transaxle 18" tires
4	812 00 00-28	Ring Retainer # 5100-62
5	532 12 15-20	Strap Torque 30 Degrees
6	817 00 05-12	Screw 5/16-18 x 3/4
7	532 16 22-40	Bracket T/A Saddle Shift
8	532 13 16-79	Rod Shifter
10	876 02 04-16	Pin Cotter 1/8 x 1 Cad
11	532 10 57-01	Washer Plate Shf 388 Sq Hole
12	819 15 12-16	Washer 15/32 x 3/4 x 16 Ga.
13	874 55 04-12	Bolt 1/4-28 Unf Gr 8 W/Patch
14	810 04 04-00	Washer Lock Hvy Helical 1/4
15	874 49 05-44	Bolt 5/16-18 Gr. 5
16	873 80 05-00	Nut Lock Hx W/Ins 5/16-18 Unc
18	874 78 06-16	Bolt, Fin Hex 3/8-16 Unc x 1 Gr. 5
19	873 80 06-00	Nut Lock 3/8-16 Unc
21	532 10 69-33	Knob
22	532 13 08-04	Rod Brake Blk Zinc 26 840
24	873 35 06-00	Nut Hex Jam 3/8-16 Unc
25	532 10 68-88	Spring Rod Brake 2 00 Zinc
26	819 13 13-16	Washer 13/32 x 13/16 x 16 Ga
27	876 02 04-12	Pin Cotter 1/8 x 3/4 Cad
28	532 17 57-65	Rod Brake Parking
29	532 07 16-73	Cap Brake Parking
30	532 17 49-73	Bracket Mtg Transaxle
32	874 76 05-12	Bolt Hex Hd 5/16-18 Unc x 3/4
34	532 17 55-78	Shaft Asm Pedal Foot
35	532 12 01-83	Bearing Nylon Blk 629 Id
36	819 21 16-16	Washer 21/32 x 1 x 16 Ga
37	532 12 49-63	Pin Roll 3/16 x 1"
38	532 17 91-14	Pulley Idler Composite
39	872 11 06-22	Bolt Rdhd 3/8-16 x 2-3/4 Gr. 5
41	532 17 55-56	Keeper Belt Retainer Idler
47	532 12 77-83	Pulley Idler V Groove Plastic
48	532 15 44-07	Bellcrank Asm

KEY NO.	PART NO.	DESCRIPTION
49	532 12 32-05	Retainer Belt Style Spring
50	872 11 06-12	Bolt Carr Sh 3/8-16 x 1-1/2 Gr. 5
51	873 68 06-00	Nut Crownlock 3/8-16 Unc
52	873 68 05-00	Nut Crownlock 5/16-18 Unc
53	532 10 57-10	Link Clutch
55	532 10 57-09	Spring Return Clutch 6 75
56	817 06 06-20	Screw 3/8-16 x 1-1/4
57	532 13 08-01	V-Belt Ground Drive
59	532 16 96-91	Keeper Belt Span Ctr
61	817 12 06-14	Screw 3/8-16 x .875
62	532 12 48-72	Cover Pedal Blk Round
63	532 17 54-10	Engine Pulley
64	532 17 39-37	Bolt Hex
65	810 04 07-00	Washer Lock Hvy Hlcl Spr 7/16
66	532 15 47-78	Keeper Belt Engine Foolproof
70	532 13 46-83	Guide Belt Mower Drive RH
74	532 13 70-57	Spacer Axle
75	532 12 17-49	Washer 25/32 x 1 1/4 x 16 Ga.
76	812 00 00-01	E-ring #5133-75
77	532 12 35-83	Key Square 2 0 x 1845/ 1865
78	532 12 17-48	Washer 25/32 x 1-5/8 x 16 Ga.
79	532 12 50-96	Key Woodruff
96	532 12 47-88	Retainer Spring 1"
112	819 09 12-10	Washer 9/32 x 3/4 x 10 Ga.
113	532 12 72-85	Strap Torque Lh
116	872 14 06-08	Bolt Rdhd Sq Neck 3/8-16 x 1.00
120	873 90 06-00	Nut Lock Flg 3/8-16
150	532 17 54-56	Spacer Retainer
151	819 13 32-10	Washer 13/32 x 2 x 10
170	532 17 83-94	Keeper Belt T/A
202	872 11 06-14	Bolt, 3/8 - 16 x 1-3/4 Gr. 5
212	532 14 52-12	Nut Flange Hex Lock
263	817 00 06-12	Screw 3/8-16 x 3/4
275	873 90 06-00	Nut 3/8-16

**NOTE:** All component dimensions given in U.S. inches  
1 inch = 25.4 mm

# REPAIR PARTS

TRACTOR - - MODEL NUMBER MC1136 (MC1136B), PRODUCT NO. 964 77 30-01  
STEERING



steering\_pl lt\_42



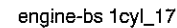
# REPAIR PARTS

TRACTOR - - MODEL NUMBER MC1136 (MC1136B), PRODUCT NO. 964 77 30-01  
STEERING

KEY NO.	PART NO.	DESCRIPTION
1	<b>532 18 67-80</b>	Wheel Steering
2	532 17 51-31	Axle Asm
3	532 16 98-40	Spindle Asm LH
4	532 16 98-39	Spindle Asm RH
5	532 12 49-31	Bearing Race Thrust Harden
6	532 12 17-48	Washer 25/32 x 1-5/8 x 16 Ga.
7	819 27 20-16	Washer 27/32 x 1-1/4 x 16 Ga.
8	812 00 00-29	Ring Klip #t5304-75
9	532 12 49-37	Bearing Col Strg Blk
10	532 17 51-21	Link Drag
11	810 04 06-00	Washer Lock Hvy Hlcl Spr 3/8
12	873 94 08-00	Nut Hex Jam Toplock 1/2-20
13	532 13 65-18	Spacer earing Axle Front
15	532 14 52-12	Hexflange Lock
17	532 18 06-41	Shaft Asm Strg
26	532 12 68-47	Bushing Link Drag Blk LR
28	819 13 14-16	Washer 13/32 x 7/8 x 16 Ga.
29	817 00 06-12	Screw 3/8-16 x 3/4
30	876 02 04-12	Pin Cotter 1/8 x 3/4 Cad
32	532 13 04-65	Rod Tie Wire Form 19 75 Mech
36	532 15 50-99	Bushing Strg 5/8 Id Dash
37	532 15 29-27	Screw
38	<b>532 19 29-16</b>	Cap Wheel Steer
39	819 18 38-12	Washer 9/16 ID x 2-3/8 OD 12 Ga.
40	873 54 06-00	Nut Crownlock 3/8-24
41	532 18 67-37	Adaptor Wheel Strg
42	532 16 96-33	Boot Steering
43	532 12 17-49	Washer 25/32 x 1 1/4 x 16 Ga.
44	532 18 06-40	Extension Steering
46	532 12 12-32	Cap Spindle Fr Top Blk
47	532 18 32-26	Fitting Grease
51	873 54 04-00	Nut Crownlock 1/4-28
54	871 13 04-20	Bolt Hex 1/4-28 Unf x 1-1/4 Gr. 8
65	532 16 03-67	Spacer Brace Axle
67	872 11 06-18	Bolt 3/8-16 x 2-1/4
68	532 16 98-27	Brace Axle
71	532 17 51-46	Steering Asm
82	532 16 98-35	Bracket Susp Chassis Front
85	532 13 38-35	Fastener Christmas Tree
88	532 17 51-18	Bolt shoulder 7/16-20
91	532 17 55-53	Clip Steering

**NOTE:** All component dimensions given in U.S. inches  
1 inch = 25.4 mm.

**TRACTOR - - MODEL NUMBER MC1136 (MC1136B), PRODUCT NO. 964 77 30-01  
ENGINE**

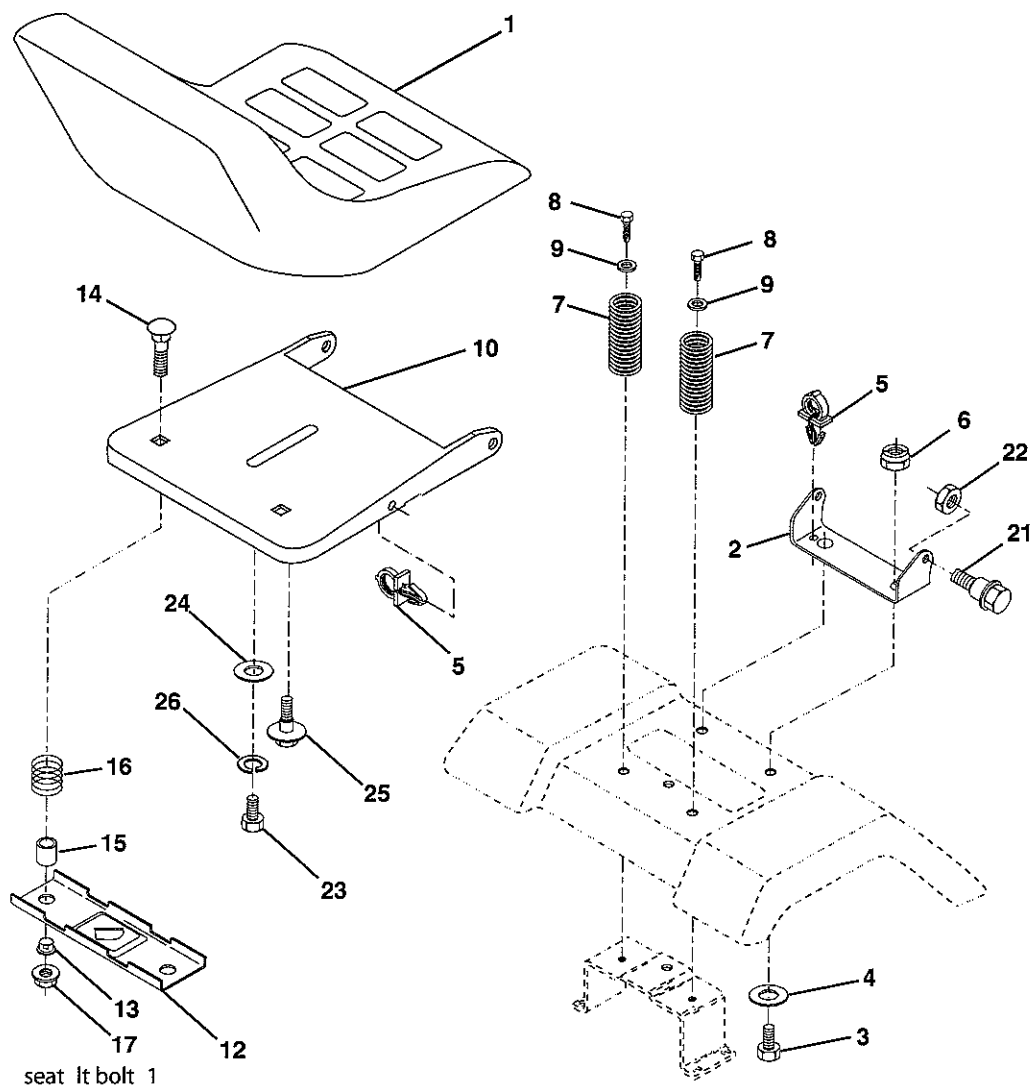


KEY NO.	PART NO.	DESCRIPTION
33	532 12 34-87	Clamp Hose
37	532 13 70-40	Line Fuel 20"
38	532 18 16-54	Plug Drain Oil Easy
40	532 12 40-28	Bushing Snap NYL BLK Fuel Line
44	817 67 04-12	Screw Thdrol 1/4-20 x 3/4
45	817 00 06-12	Screw Hex Wsh Thdrol 3/8-16
46	819 09 14-16	Washer 9/32 x 7/8 x 16 Ga.
72	532 18 39-06	Screw 5/16-18 x 1
78	817 06 06-20	Screw 3/8-16 x 1-1/4
81	873 51 04-00	Nut Keps Hex 1/4-20 Unc

36

# REPAIR PARTS

TRACTOR - - MODEL NUMBER MC1136 (MC1136B), PRODUCT NO. 964 77 30-01  
SEAT



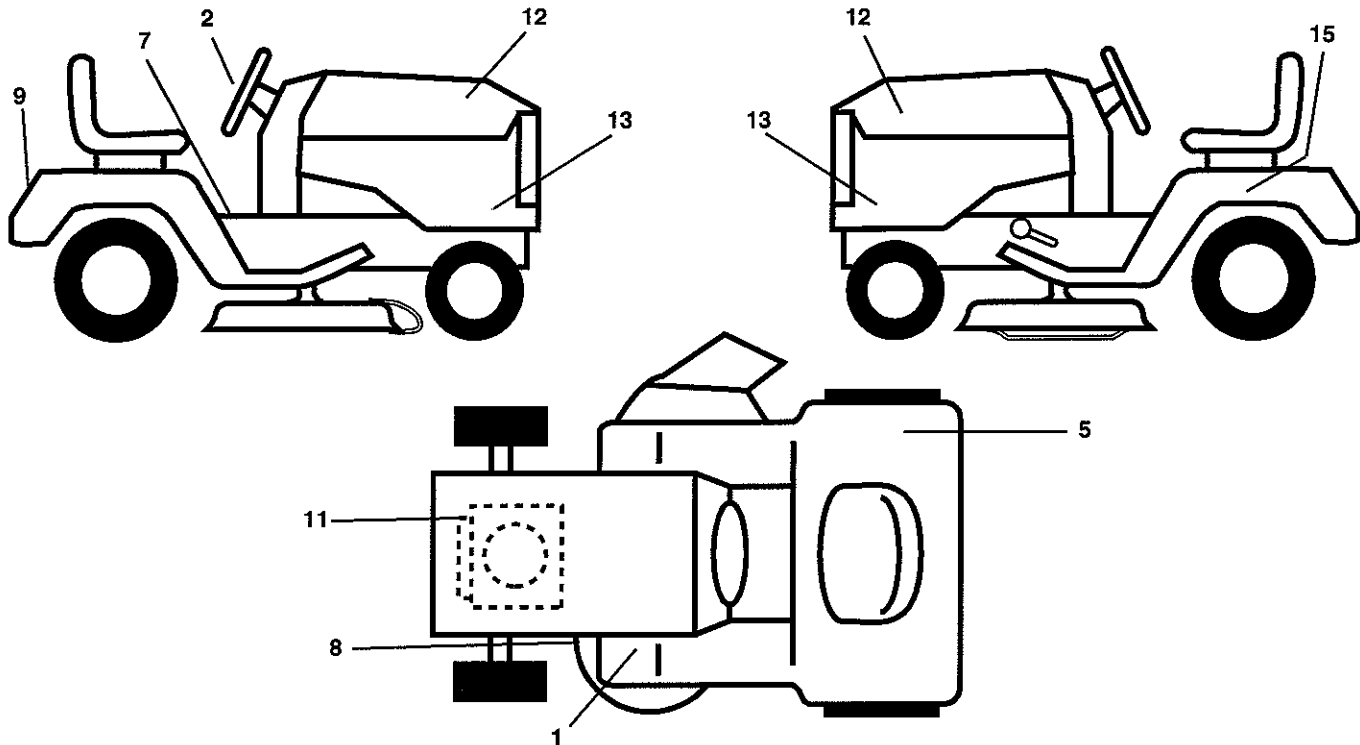
KEY NO.	PART NO.	DESCRIPTION
1	532 17 53-89	Seat
2	532 14 05-51	Bracket Seat Pivot
3	871 11 06-16	Bolt Hex 3/8 - 16 x 1
4	819 13 16-10	Washer 13/32 x 1 x 10 Ga.
5	532 14 50-06	Clip Push-In Hinged
6	873 80 06-00	Nut Lock Hex w/Ins 3/8 - 16
7	532 12 41-81	Spring Seat Cprsn 2 250 Blk Zi
8	817 00 06-16	Screw 3/8-16 x 1.5
9	819 13 16-14	Washer 13/32 x 1 x 14 Ga.
10	532 18 24-93	Pan Pnt Seat (Blk)
12	532 12 12-46	Bracket Pnt Mounting Switch
13	532 12 12-48	Bushing Snap Blk Nyl

KEY NO.	PART NO.	DESCRIPTION
14	872 05 04-12	Bolt Rdhd Sht Nk 1/4 - 20 x 1 -1/2
15	532 13 43-00	Spacer Split .28 x .96
16	532 12 12-50	Spring Cprsn
17	532 12 39-76	Nut Lock 1/4 Lge Flg
21	532 17 18-52	Bolt Shoulder 5/16-18 Unc-2A
22	873 80 05-00	Nut Lock Hex w/Ins 5/16 - 18
23	871 11 08-14	Bolt Hex Black
24	819 17 19-12	Washer 17/32 x 1-3/16 x 12 Ga.
25	532 12 70-18	Bolt Shoulder 5/16-18 x .62
26	810 04 08-00	Washer Lock Hvy Hlcl Spr 1/2

**NOTE:** All component dimensions given in U.S. inches  
1 inch = 25.4 mm.

# REPAIR PARTS

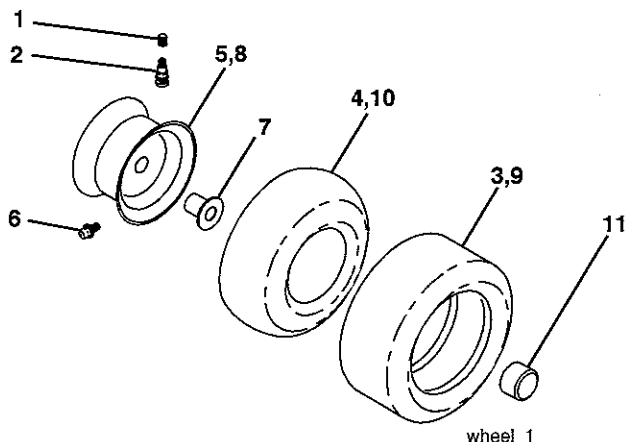
TRACTOR - - MODEL NUMBER MC1136 (MC1136B), PRODUCT NO. 964 77 30-01  
DECALS



KEY NO.	PART NO.	DESCRIPTION
1	532 18 12-49	Decal, Clutch/Brake
2	532 18 58-81	Decal, Steering Wheel
5	532 16 88-69	Decal, Tick Mark
7	532 15 70-02	Decal, Finger Danger
8	532 13 68-32	Decal, V-Belt Sch.

KEY NO.	PART NO.	DESCRIPTION
9	532 18 91-76	Decal, Fender
11	<b>532 18 48-53</b>	Decal, Engine
12	532 18 90-24	Decal, Hood RH/LH
13	<b>532 19 40-76</b>	Decal, 36/11 5/4
15	532 14 50-05	Decal, Caution, Battery
--	532 13 83-11	Decal, Handle Lft Height Adj.
--	532 19 38-89	Manual, Owner's

## WHEELS & TIRES

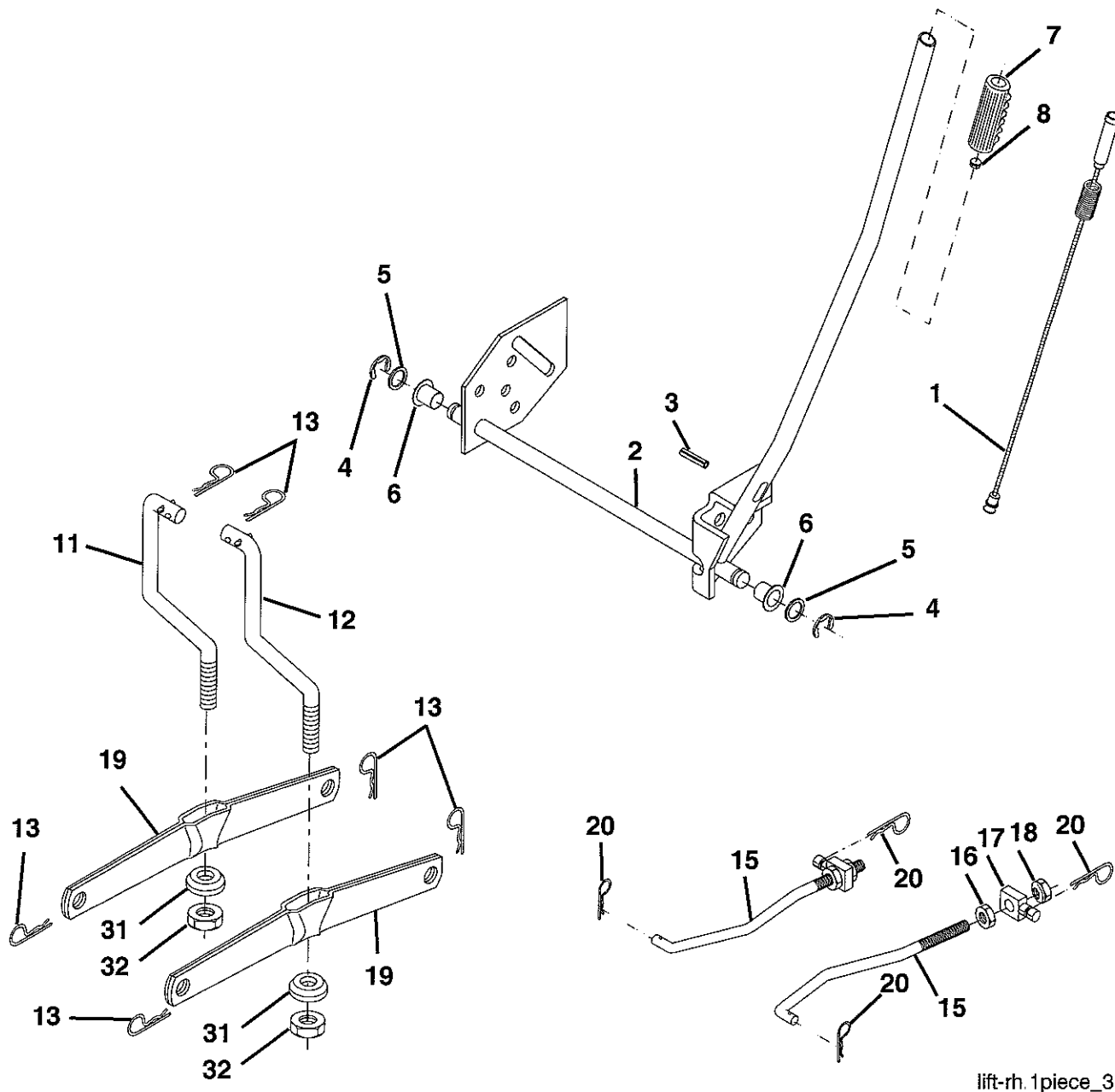


KEY NO.	PART NO.	DESCRIPTION
1	532 05 91-92	Cap, Tire valve
2	532 06 51-39	Stem, Valve
3	532 12 41-57	Tire, Front
4	532 05 99-04	Tube, Front (Service item only)
5	532 18 33-37	Rim assembly, 6" front
6	532 12 49-57	Fitting, Grease (Front wheel only)
7	532 12 49-59	Bearing, Flange (Front wheel only)
8	532 18 33-38	Rim assembly, 8" rear
9	532 12 39-69	Tire, Rear
10	532 12 49-26	Tube, Rear (Service item only)
11	532 17 50-39	Cap, Hub Axle
--	532 14 43-34	Sealant, Tire (10 oz. Tube)

**NOTE:** All component dimensions given in U.S. inches  
1 inch = 25.4 mm

# REPAIR PARTS

TRACTOR - - MODEL NUMBER MC1136 (MC1136B), PRODUCT NO. 964 77 30-01  
MOWER LIFT



lift-rh. 1piece\_3

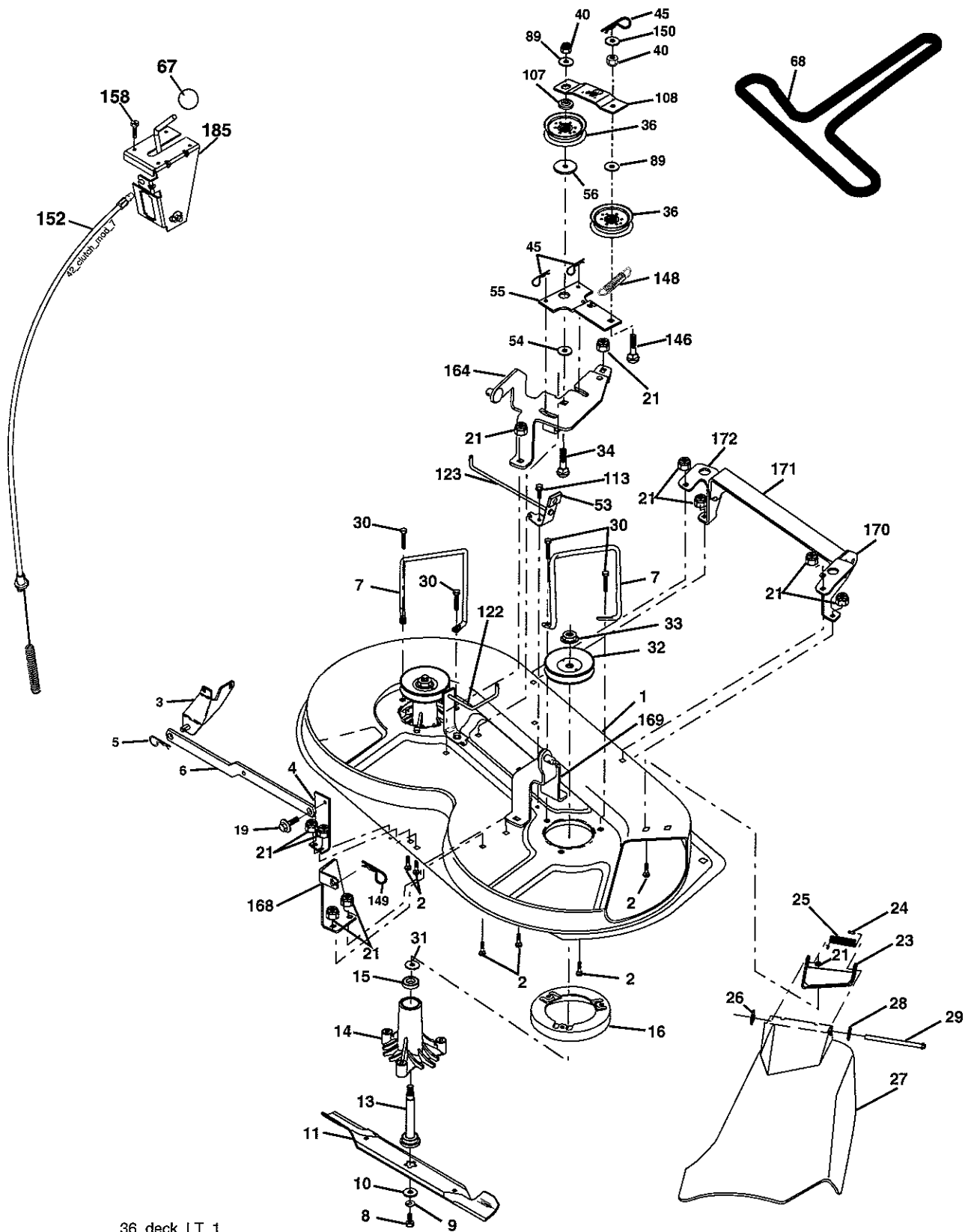
KEY NO.	PART NO.	DESCRIPTION
1	532 15 94-61	Wire Asm Inner/Sprg w/plunger
2	532 15 94-76	Shaft Asm Lift RH
3	532 17 89-81	Pin Groove
4	812 00 00-02	E Ring #5133-62
5	819 21 16-21	Washer 21/32 x 1 x 21 Ga.
6	532 12 01-83	Bearing Nylon Blk 629 Id
7	532 10 94-13	Grip Handle Bicycle Matte Blk
8	532 12 45-26	Button Plunger Black
11	532 13 98-65	Link Lift LH Fixed Length
12	532 13 98-66	Link Lift RH Fixed Length
13	532 12 46-70	Retainer Spring

KEY NO.	PART NO.	DESCRIPTION
15	532 17 32-88	Link Front
16	873 35 08-00	Nut Jam Hex 1/2-13 Unc
17	532 17 56-89	Trunnion
18	873 80 08-00	Nut Lockw/Wsh 1/2-13 Unc
19	532 13 98-68	Arm Suspension Rear
20	532 16 35-52	Retainer, Spring
31	532 16 98-65	Bearing Pvt Lift
32	873 54 06-00	Nut Crownlock 3/8-24

**NOTE:** All component dimensions given in U.S. inches  
1 inch = 25.4 mm.

# REPAIR PARTS

TRACTOR - - MODEL NUMBER MC1136 (MC1136B), PRODUCT NO. 964 77 30-01  
MOWER DECK



36\_deck\_LT\_1

# REPAIR PARTS

TRACTOR - - MODEL NUMBER MC1136 (MC1136B), PRODUCT NO. 964 77 30-01  
MOWER DECK

KEY NO.	PART NO.	DESCRIPTION
1	532 17 45-95	Mower Deck Assembly
2	872 14 05-06	Bolt
3	532 13 80-17	Bracket Assembly, Sway Bar
4	532 17 56-54	Bracket Sway Bar
5	532 12 46-70	Retainer Spring
6	532 17 80-24	Bar Sway Deck
7	532 14 06-08	Keeper Belt
8	532 85 08-57	Bolt, Hex 3/8-24 x 1.25 Gr. 8
9	810 03 06-00	Washer, Lock Hvy Hlcl 3/8
10	532 14 02-96	Washer, Hardened
11	532 13 84-96	Blade, Mower
13	532 13 76-45	Shaft Assembly, Mandrel,
14	532 12 87-74	Housing, Mandrel, Vented
15	532 11 04-85	Bearing, Ball, Mandrel
16	532 17 44-93	Stripper, Mower Deck
19	532 13 28-27	Bolt, Shoulder
21	873 68 05-00	Nut Crownlock 5/16-18
23	532 13 66-31	Bracket, Mower Deflector
24	532 10 53-04	Cap, Sleeve
25	532 12 37-13	Spring, Torsion, Deflector
26	532 11 04-52	Nut, Push
27	532 17 61-62	Shield, Deflector
28	819 11 10-16	Washer 11/32 x 5/8 x 16 Ga.
29	532 12 19-80	Rod, Hinge
30	532 17 39-84	Screw Thdrol
31	532 12 99-63	Washer, Spacer
32	532 15 35-31	Pulley, Mandrel
33	532 17 83-42	Nut, Toplock, Flanged
34	872 11 06-14	Bolt Rdhd 3/8-16 x 1-3/4
36	532 13 14-94	Pulley, Idler, Flat
40	873 68 06-00	Nut Crownlock 3/8-16
45	532 12 47-88	Retainer, Spring

KEY NO.	PART NO.	DESCRIPTION
53	532 13 08-40	Brake Assembly
54	532 17 85-15	Washer, Hardened
55	532 13 38-40	Idler Arm Assembly
56	532 16 57-23	Spacer, Retainer
67	532 10 69-32	Knob RD 3/8-16 Plstc Thd
68	532 17 49-78	Belt
89	819 13 13-11	Washer 13/32 x 13/16 x 11 Ga.
107	532 13 35-02	Spacer, Retainer
108	532 13 35-03	Stiffener, Idler Arm
113	817 49 05-08	Screw Thdrol 5/16-18 x 1/2
122	532 17 45-05	Rod, Brake, LH
123	532 17 45-04	Rod, Brake, RH
146	532 16 58-91	Bolt Carriage Idler
148	532 16 90-22	Spring Return Idler
149	532 16 58-98	Retainer Spring Yellow Zinc
150	819 09 12-16	Washer 9/32 x 3/4 x 16 Ga.
152	532 17 60-79	Cable Clutch
158	817 72 04-08	Screw Hex Thd Cut 1/4-20 x 1/2
164	532 17 49-76	Bracket Asm Idler Support
168	532 17 23-77	Bracket Deck Cable
169	532 17 49-77	Bracket Asm Suspension
170	532 17 23-59	Bracket Suspension RF
171	532 16 52-37	Bracket Support Susp. Frt
172	532 17 23-55	Bracket Suspension LF
185	532 18 82-34	Head Asm Cable clutch
--	532 13 07-94	Mandrel Assembly (Includes Housing, Shaft and Shaft Hardware Only - Pulley Not Included)
--	532 17 52-54	Replacement Mower, Complete

**NOTE:** All component dimensions given in U.S. inches  
1 inch = 25.4 mm