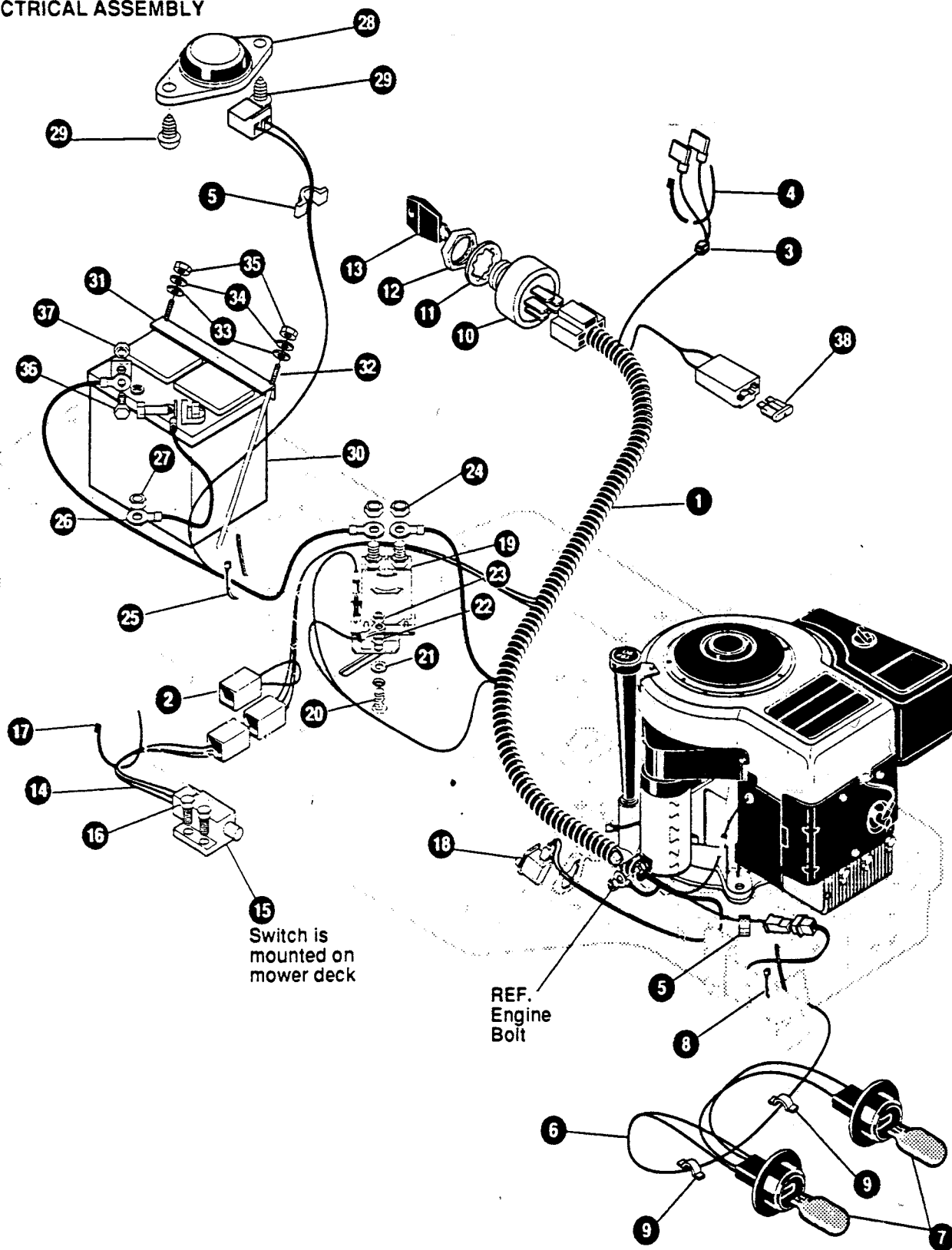


ELECTRICAL ASSEMBLY



Switch is mounted on mower deck

REF. Engine Bolt

ALL UNNUMBERED ITEMS ARE INTERCHANGABLE WITH OPPOSITE SIDE

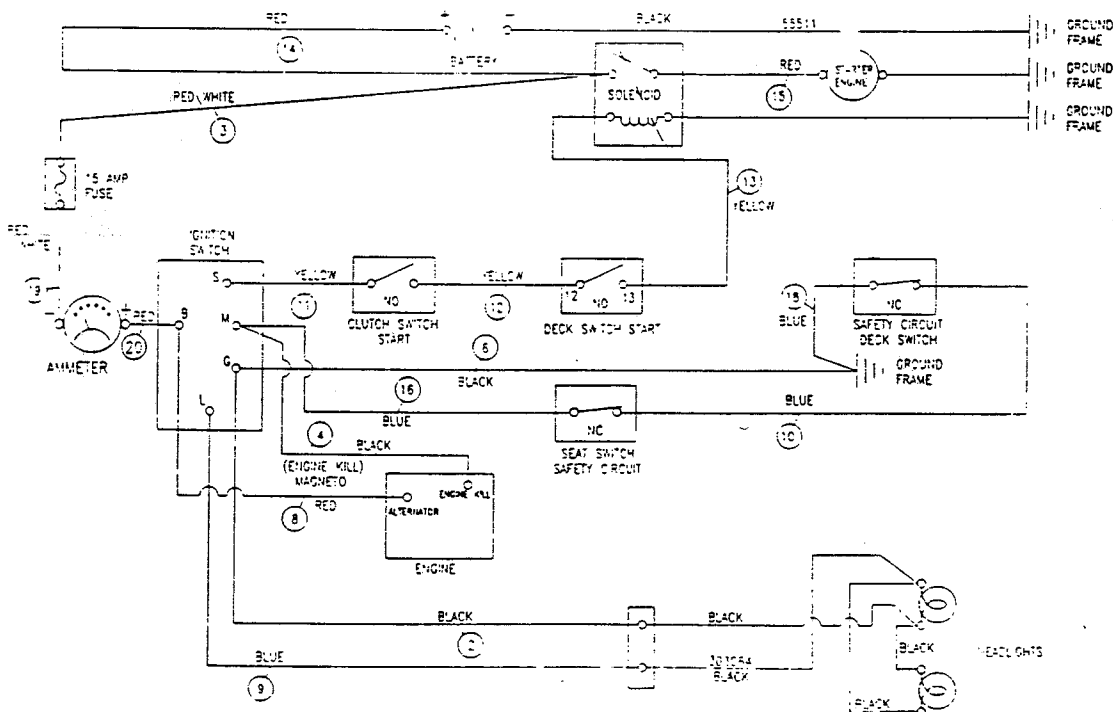
NOTE: ALWAYS USE ORIGINAL EQUIPMENT PARTS.
Use of service/replacement parts other than original equipment parts may void your warranty.

322208A

key#	part#	description	qty.
1.	138784	WIRE HARNESS SF 8-12B&S	1
2.	138792	BY-PASS FOR GROUND SUPPORT	1
3.	138800	SPLICER	1
4.	110379	CABLE TIE	1
5.	134676	PRESS CLIP, 1.380LG .255ID	2
6.	136945	ASSY, LIGHT WIRE-1/4 TURN	1
7.	135533	BULB, HEADLAMP	2
8.	110379	TIE, CABLE BLACK NYLON 5.62L	1
9.	134676	PRESS CLIP, 1.380LG .255ID	2
10.	136226	SWITCH, IGNITION & LIGHTS	1
11.	311241	WASHER, REGINTLK 640X1.1X.05	1
12.	310102	NUT, 5/8-32 HXHD IGN SWIT	1
13.	136242	2 KEYS & RING, ASSY BLANK	1
14.	135368	HARNESS, DECK WIRE SHORT 4 WIRE	1
15.	134825	SWITCH, SCR MNT DP NC NO BLK	1
16.	157933	SCREW, #12 X .50 PHPNHTAP BLK	2
17.	110379	TIE, CABLE BLACK NYLON 5.62L	1
18.	135822	SWITCH, SNAPMNT NO .055/.116BLK	1
19.	134940	SOLENOID	1
20.	158121	SCREW, 1/4-20X .75 HXSEMMA	2
21.	151555	WASHER, FLAT .281X1.00X.063	1
22.	616375	NUT, 1/4-20 REGHEXCTRLK	2
23.	715037	NUT, 1/4-20 REGHEXKEPS	1
24.	164145	NUT, 5/16-24 HKEPS	2
25.	110379	TIE, CABLE BLACK NYLON 5.62L	1
26.	134908	WIRE, GROUND, 12.5"	1
27.	150136	NUT, 5/16-18 HEXKEPS	1
28.	135897	SWITCH, SEAT	1
29.	158030	SCREW, 1/4-20X .38PHPNHMA	2
30.	138735	BATTERY	1
31.	095687	BATTERY BRACKET	1
32.	095695	BATTERY ROD	2
33.	460923	WASHER, FLAT .281X .63X.065	2
34.	715094	WASHER, REGSPTLK.263X.49X.07	2
35.	310052	NUT, 1/4-20 REGHEX	2
36.	449587	SCREW, 1/4-20X .63 HHC	2
37.	715037	NUT, 1/4-20 REGHEXKEPS	2
38.		FUSE, 15 AMP (PURCHASE LOCALLY)	1

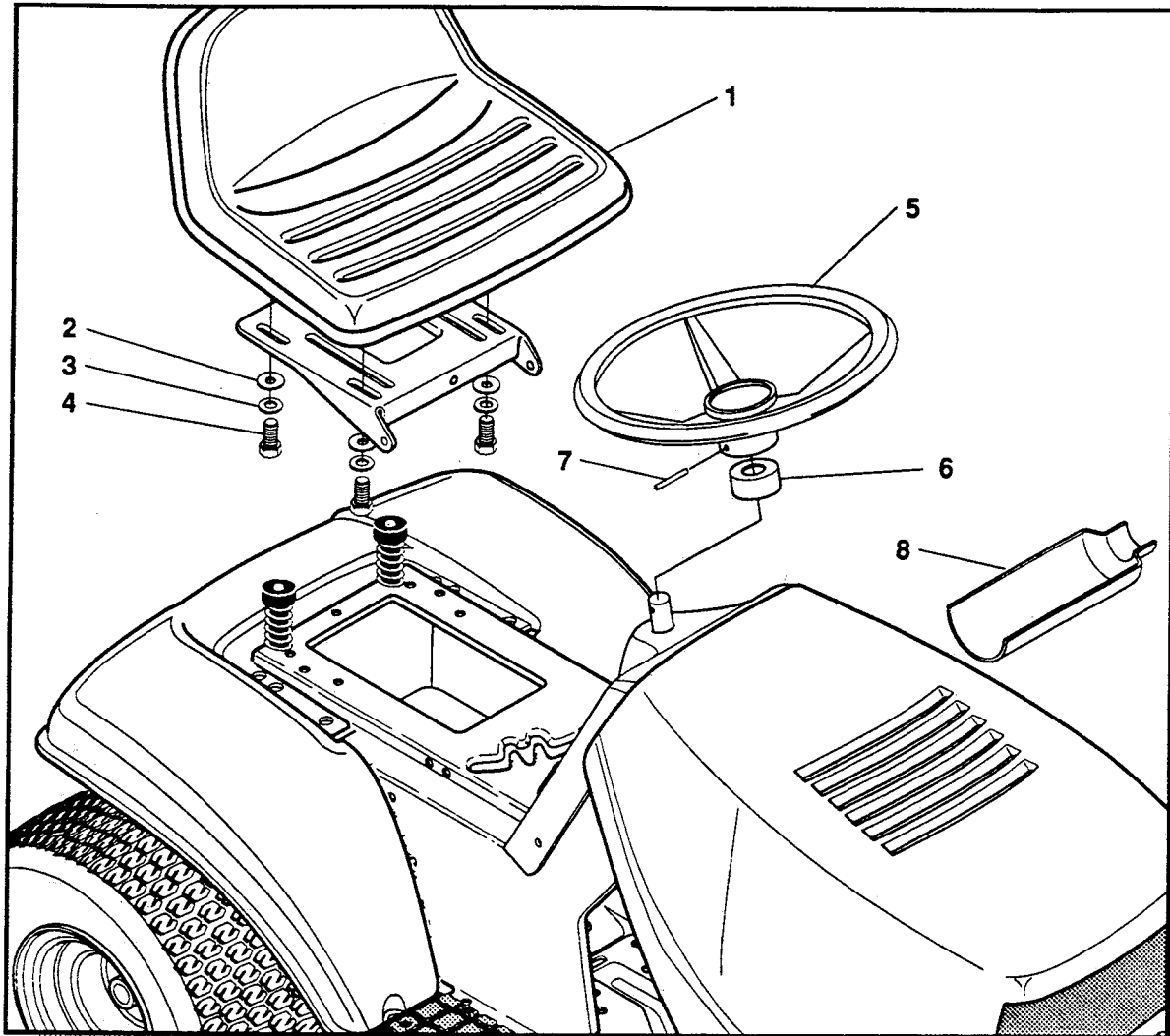
• INDICATES STANDARD HARDWARE ITEMS

SCHEMATIC DRAWING:



S/N 231936
P/L 189324 E/M 188953
O/M 189316 P/B 395905

CUSTOMER ASSEMBLY



CUSTOMER ASSEMBLY VIEW

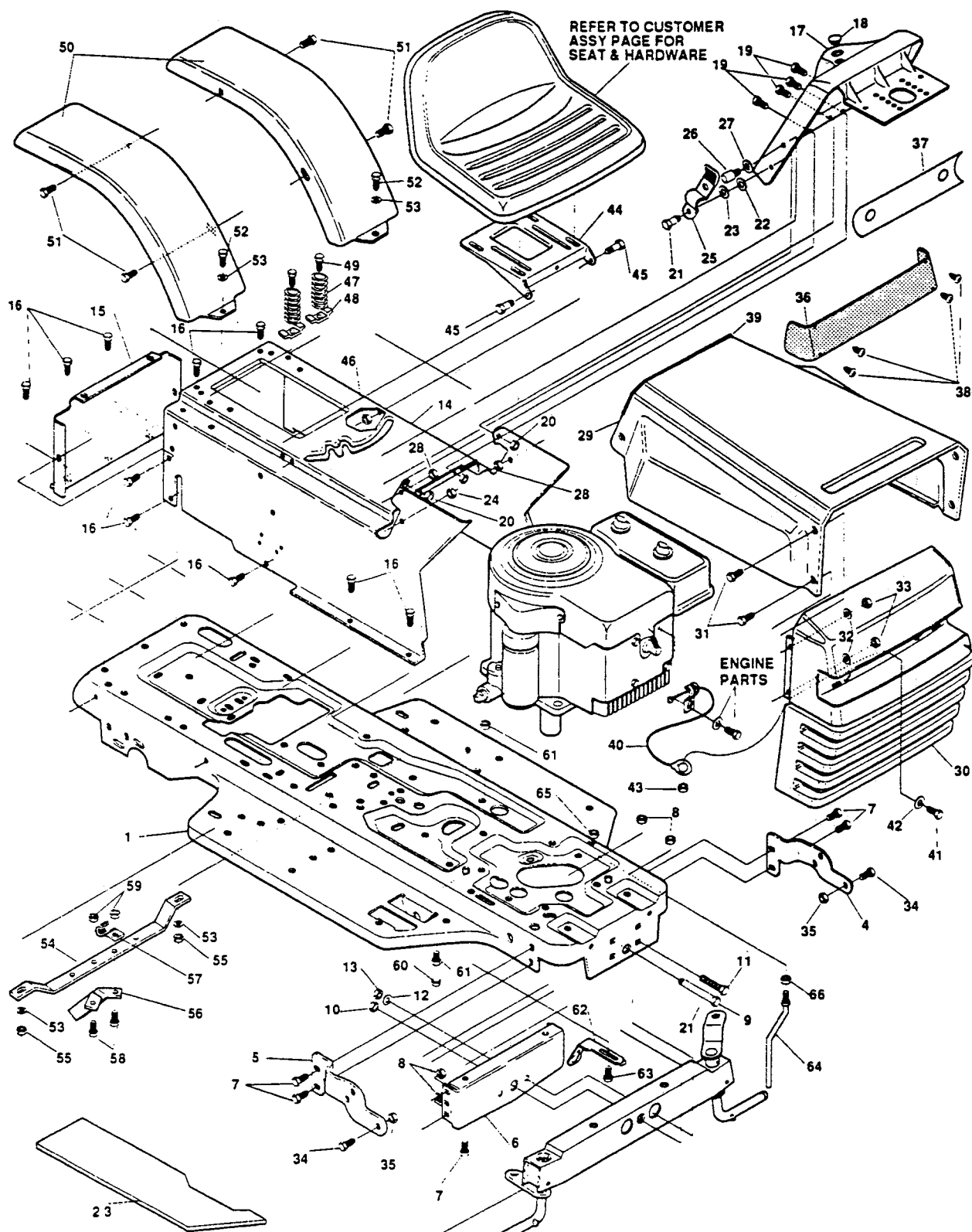
315134 PARTS BAG ASSEMBLY QTY 1

Key#	Part#	Description	Qty
1	114918	SEAT, MV350	1
2	715185	WASHER, FLAT .344 X .69 X .065	4
3	311118	WASHER, HVSP LTK .328 X .60 X .109	4
4	158485	SCREW, 5/16-18 X .75 HHC	4
5	112771	STEERING WHEEL	1
6	115030	STEERING SHAFT COVER	1
7	159434	ROLL PIN, .250 DIA X 2.0 LG	1
8	112805	OIL TROUGH	1

MODEL 405L
12 HP 36" Cut Front Engine Riding Mower

Uses Grass Catcher Assembly Model 36/39/45
 Grass Catcher P/N 228759
 See p. 158 for breakdown

CHASSIS & HOOD ASSEMBLY



NOTE: ALWAYS USE ORIGINAL EQUIPMENT PARTS. Use of service/replacement parts other than original equipment parts may void your warranty.

REF.
 FRONT AXLE
 ASSEMBLY

**ALL UNNUMBERED
 ITEMS ARE INTERCHANGABLE
 WITH OPPOSITE SIDE**

320185B

S/N 231936
 P/L 189324 E/M 188953
 O/M 189316 P/B 395905

Uses Grass Catcher Assembly Model 36/39/45
Grass Catcher P/N 228759
See p. 158 for breakdown

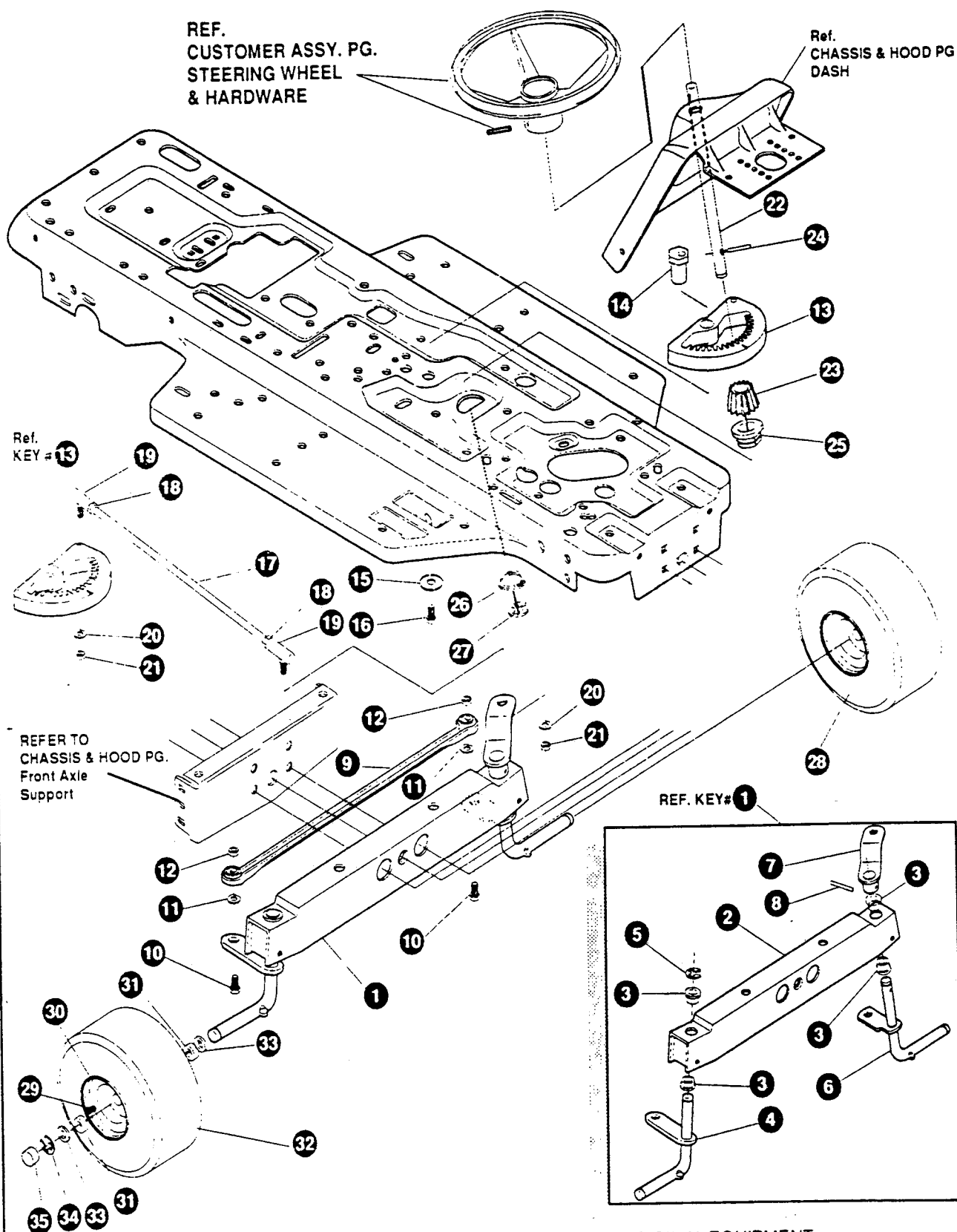
MODEL 405L
12 HP 36" Cut Front Engine Riding Mower

key#	part#	description	q'ty.	
1	019570	FRAME,MAIN SF RIDER	1	
2	113084	FOOTPAD,LH	1	
3	113092	FOOTPAD,RH	1	
4	089367	BRACKET,GRILLE L.H.	1	
5	089375	BRACKET,GRILLE R.H.	1	
6	019224	BRKT,SUPT FRT	1	
7	157636	SCREW, 5/16-18X.75WDFLLK	6	
8	• 157628	NUT, 5/16-18 HXWDFLLK	6	
9	164129	BOLT, .625X2.875 SPSH 1/2-20	1	
10	• 158428	NUT, 1/2-20 REGHXCTRLK	1	
11	• 450767	SCREW, 3/8-16X2.75 HHC	1	
12	158055	WASHER, 39IDX1.25DX.07 BELLVIL	1	
13	• 310011	NUT, 3/8-16 REGHXCTRLK	1	
14	022566	CONSOLE	1	
15	013250	CONSOLE, REAR COVER	1	
16	• 158089	SCREW, 1/4-20X .50 WAHHTAP	15	
17	022558	DASH	1	
18	• 164111	PLUG DOME	1	
19	• 158097	SCREW, 1/4-20X .63 HHWATAP	4	
20	• 451419	NUT, 1/4-20 WDFLLK TOPLOCK	2	
21	157511	BOLT, .375X .156 HHSH 5/16-18	2	
22	• 715417	WASHER FLAT 406X 81X.065	2	
23	• 715185	WASHER, FLAT 344X .69X.065	2	
24	• 616342	NUT, 5/16-18 REGHEXCTRLK	2	
25	336701	LATCH, 94WDX 047 ASSY HOOD	2	
26	176479	PIN, 5/16-18 HOOD LATCH	2	
27	153510	WASHER, REGINTLK 320X 61X.03	2	
28	• 157610	NUT 5/16-18 HEXWDFLLK WHIZ	2	
29	022574	HOOD	1	
30	114801	GRILLE	1	
31	• 158626	SCREW 5/16-9X .75 WAHHPLAS	4	
32	460923	FLAT WASHER 281 X 63 X .665Z	4	
33	616375	LOCKNUT 1/4-20	4	
34	157487	BOLT .375X .500 HHSH 5/16-18	2	
35	• 616342	NUT, 5/16-18 REGHEXCTRLK	2	
36	336057	LENS HEADLAMP	1	
37	114793	FOIL LENS DYNA-PRO REFLECTOR	1	
38	• 158865	SCREW #6 X 50 PLASTITE	4	
39	134700	EDGING	25"	
40	089383	LANYARD,HOOD	1	
41	159004	SCREW 1/4-20 X .75 HHC	1	
42	460923	FLAT WASHER 281 X X 65 X .065	1	
43	616375	LOCKNUT 1/4-20	1	
44	013888	PLATE, SEAT	1	
45	157503	BOLT, .437X .156 HHSH 5/16-18	2	
46	• 616342	NUT, 5/16-18 REGHEXCTRLK	2	
47	135632	SPRING,1.43X2 38X 162 COM SEAT	2	
48	097386	CLAMP,SPRING 1.17"ID	2	
49	• 158089	SCREW, 1/4-20X .50 WAHHTAP	2	
50	013284	FENDER	2	
51	• 158089	SCREW, 1/4-20X .50 WAHHTAP	4	
52	• 152108	SCREW, 5/16-18X1.00 HHC	2	
53	• 158469	WASHER, FLAT 375X 88X.082	4	
54	095893	SUPPORT GUIDE	1	
55	• 616342	NUT, 5/16-18 REGHEXCTRLK	2	
56	014720	BRACKET, DECK GUIDE	1	
57	135145	RETAINER, 31IDX 62X .03 WIRE	1	
58	• 152108	SCREW, 5/16-18X1.00 HHC	2	
59	• 616342	NUT, 5/16-18 REGHEXCTRLK	2	
60	• 164137	SCREW, 3/8-16X7.50 HHC	1	
61	• 310011	NUT, 3/8-16 REGHXCTRLK	2	
62	174664	BRACKET,SWITCH MOUNT	1	
63	• 158089	SCREW, 1/4-20X .50 WAHHTAP	1	
64	096644	GUIDE, BELT	1	
• STANDARD	65	• 715524	NUT, 3/8-16 HXCTRLKJAM	1
HARDWARE ITEMS.	66	• 451500	NUT, 3/8-16 HEXKEPS	1

• This parts list covers several different mower models, not all of the parts listed may be used on the particular model you are working with
• When servicing use only Genuine Factory Replacement Parts (OEM) that are specifically designed for the particular model that you are working with
• Parts are right or left hand as viewed from the operator's position
• Model specifications are subject to change without prior notice
• Do not operate the mower unless all parts are attached and in good working order
• Lawn mower deck and/or other painted parts differing in color may be substituted without notice

- This parts list covers several different mower models. Not all of the parts listed may be used on the particular model you are working with.
- When servicing use only Genuine Factory Replacement Parts (OEM) that are specifically designed for the particular model that you are working with.
- Parts are right or left hand as viewed from the operator's position.
- Model specifications are subject to change without prior notice.
- Do not operate the mower unless all parts are attached and in good working order.
- Lawn mower deck and/or other painted parts differing in color may be substituted without notice.

STEERING ASSEMBLY

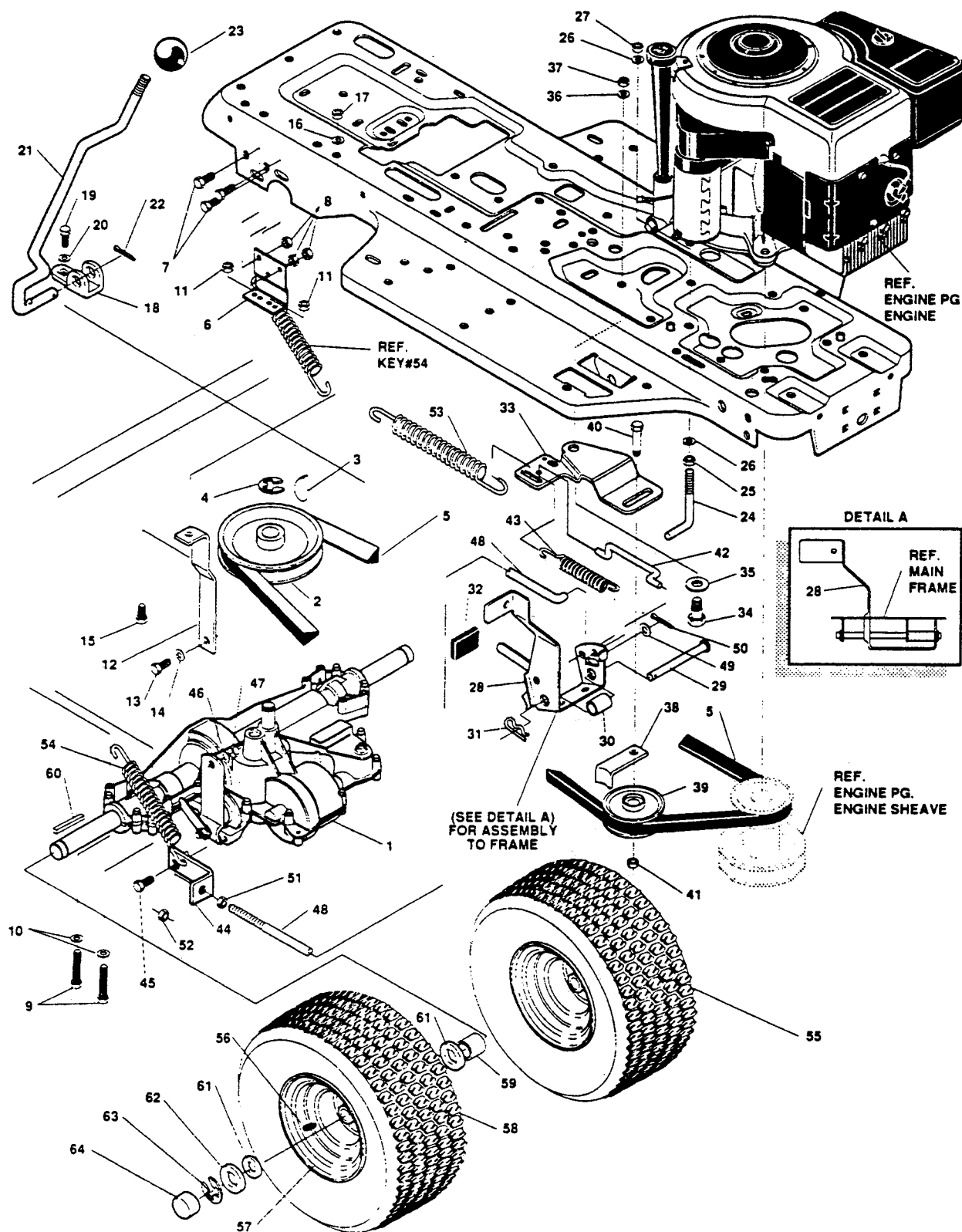


key#	part#	description	qty.
1.	022491	FRONT AXLE ASSEMBLY	1
2.	022509	AXLE FRONT	1
3.	135673	BEARING FLANGE	4
4.	022533	SPINDLE,RH	1
5.	316513	RING,RETEX	1
6.	022541	SPINDLE,LH	1
7.	018523	ARM,STEERING LH	1
8.	314088	PIN,SPRING	1
9.	172486	TIE ROD	1
10.	• 153015	SCREW, 3/8-16X1.25 HHC	2
11.	150185	WASHER, .393X.68X.10 REGSPTLK	2
12.	• 310011	NUT, 3/8-16 REGHCTRLK	2
13.	171355	SECTOR GEAR	1
14.	157768	BOLT, .750X1.40 SPSH	1
15.	158055	WASHER, .391DX1.25ODX.07	1
16.	158543	SCREW, 3/8-24X1.00 NYL	1
17.	097071	DRAG LINK	1
18.	• 158105	NUT, 3/8-24 REGHEXJAM	2
19.	135038	BALL JOINT	2
20.	• 150185	WASHER, EGSPTLK	2
21.	615633	NUT, 3/8-24 REGHEX	2
22.	089359	STEERING SHAFT	1
23.	135681	PINION,STEERING SHAFT	1
24.	314088	PIN,SPRING	1
25.	135640	BEARING, 1.370X.50 FLANGE STEERING	1
26.	158535	RING RETEX 1.27X.05	1
27.	316513	RING RETEX .57X.05	1
28.	043083	ASSEMBLY, TIRE & RIM	2
29.	135012	VALVE STEM	1
30.	043091	WHEEL W.BEARING	1
31.	164103	BEARING, 1.380DX.753ID FLANGE	2
32.	158063	WASHER FLAT .755X1.31X.075	4
33.	316513	RING RETEX .57X.05	2
34.	112409	HUB CAP	2

• STANDARD HARDWARE ITEMS

- This parts list covers several different mower models; not all of the parts listed may be used on the particular model you are working with.
- When servicing use only **Genuine Factory Replacement Parts (OEM)** that are specifically designed for the particular model that you are working with.
- Parts are right or left hand as viewed from the operator's position.
- Model specifications are subject to change without prior notice.
- **Do not operate** the mower unless all parts are attached and in good working order.
- Lawn mower deck and/or other painted parts differing in color may be substituted without notice.

MOTION DRIVE ASSEMBLY



NOTE: ALWAYS USE ORIGINAL EQUIPMENT PARTS.
 Use of service/replacement parts other than original equipment parts may void your warranty.

**ALL UNNUMBERED
 ITEMS ARE INTERCHANGABLE
 WITH OPPOSITE SIDE**

320184D

Uses Grass Catcher Assembly Model 36/39/45

Grass Catcher P/N 228759

See p. 158 for breakdown

MODEL 405L

12 HP 36" Cut Front Engine Riding Mower

key#	part#	description	qty
1	^	TRANSAXLE FOOTE 4360-3	1
2	172072	PULLEY,V 4L 6.60 OD	1
3	615534	KEY, WDRF 606 .750X.187X.312	1
4	159285	RING, RETEX 58X.04TRU5100-62	1
5	171215	BELT, V 4L 82.00 SF DRIVE	1
6	337790	BRACKET, TRANSAXLE	2
7	• 450437	SCREW, 5/16-18X .63 HHC	6
8	• 616342	NUT, 5/16-18 REGHEXCTRLK	6
9	• 158154	SCREW, 5/16-18X2.75 HHC	4
10	715185	WASHER, FLAT .344X .69X .065	4
11	• 616342	NUT, 5/16-18 REGHEXCTRLK	4
12	179382	BRKT,STABILIZER 920,4360	1
13	• 159228	SCREW, 5/16-18X .75 WAHHTAP	1
14	311118	WASHER, HVSPTLK .328X.60X.09	1
15	• 152108	SCREW, 5/16-18X1.00 HHC	1
16	152975	WASHER, EXLK .320X.61X.03	1
17	• 616342	NUT, 5/16-18 REGHEXCTRLK	1
18	089573	BRKT,SHIFT P920-5/F4360-5&3	1
19	• 157982	SCREW, 1/4-28X .75 NYLHHC	1
20	157792	WASHER, .750X 250	1
21	098822	SHIFT LEVER	1
22	317016	PIN, COTTER .125 DIA X1.00LG	1
23	112391	KNOB SHIFT ROUND	1
24	096669	BELT GUIDE	1
25	• 150136	NUT, 5/16-18 HEXKEPS	1
26	715185	WASHER, FLAT .344X .69X.0652	2
27	• 616342	NUT, 5/16-18 REGHEXCTRLK	1
28	172148	ASSY,BRAKE PEDAL	1
29	089912	ROD,PIVOT	1
30	172189	SPACER, 53IDX 62DX1.406	1
31	715011	PIN, HAIR	1
32	135566	PAD,CLUTCH/BRAKE PEDAL	1
33	022582	IDLER ARM BRKT TRACTION	1
34	157479	BOLT, 625X .218 HHSH 5/16-18	1
35	158048	WASHER, FLAT .635X1.31X.07	1
36	158212	WASHER, FLAT .333X .87X .119	1
37	• 616342	NUT, 5/16-18 REGHEXCTRLK	1
38	109678	RETAINER, STRAP BELT	1
39	109645	PULLEY, IDLER	1
40	157750	BOLT, 3/8-16X1 50 CARR	1
41	• 310011	NUT, 3/8-16 REGHXCTRLK	1
42	096719	ROD, 268 DIA CLUTCH	1
43	158592	SPRING,3 8ODX1.625X.055	1
44	096867	BRACKET, BRAKE ROD	1
45	157503	BOLT, .437X .156 HHSH 5/16-18	1
46	715185	WASHER, FLAT .344X .69X .065	1
47	• 616342	NUT, 5/16-18 REGHEXCTRLK	1
48	179358	BRAKE ROD	1
49	715185	WASHER, FLAT .344X .69X .065	1
50	715029	PIN, COTTER .090/.086X.75LG	1
51	• 150136	NUT, 5/16-18 HEXKEPS	1
52	• 616342	NUT, 5/16-18 REGHEXCTRLK	1
53	158576	SPRING,3/4 ODX6 75X .091	1
54	109637	SPRING .071 X .62 X 4 37	1
55	043042	TIRE&RIM ASM,18X8 50-8	2
56	135012	VALVE STEM	1
57	043059	WHEEL HUB	1
58	043075	TIRE 18 X 8 50-8	2
59	158725	SPACER, .75 X 1 25 X 1 32	2
60	164095	KEY, SQUARE .187SQX2.25L	2
61	158063	WASHER, FLAT .755X1.31X .075	4
62	158188	WASHER, FLAT .755X1.53X .07	2
63	316513	RING, RETEX 57X .05TRU5133-75	2
64	112409	CAP, 1 500ID X 7.8LG HUB	2

• Indicates STANDARD HARDWARE ITEMS

^ Contact your nearest Foote Transaxle Dealer for parts and service

- This parts list covers several different mower models, not all of the parts listed may be used on the particular model you are working with
- When servicing use only **Genuine Factory Replacement Parts (OEM)** that are specifically designed for the particular model that you are working with
- Parts are right or left hand as viewed from the operator's position
- Model specifications are subject to change without prior notice
- **Do not operate** the mower unless all parts are attached and in good working order
- Lawn mower deck and/or other painted parts differing in color may be substituted without notice

S/N 231936

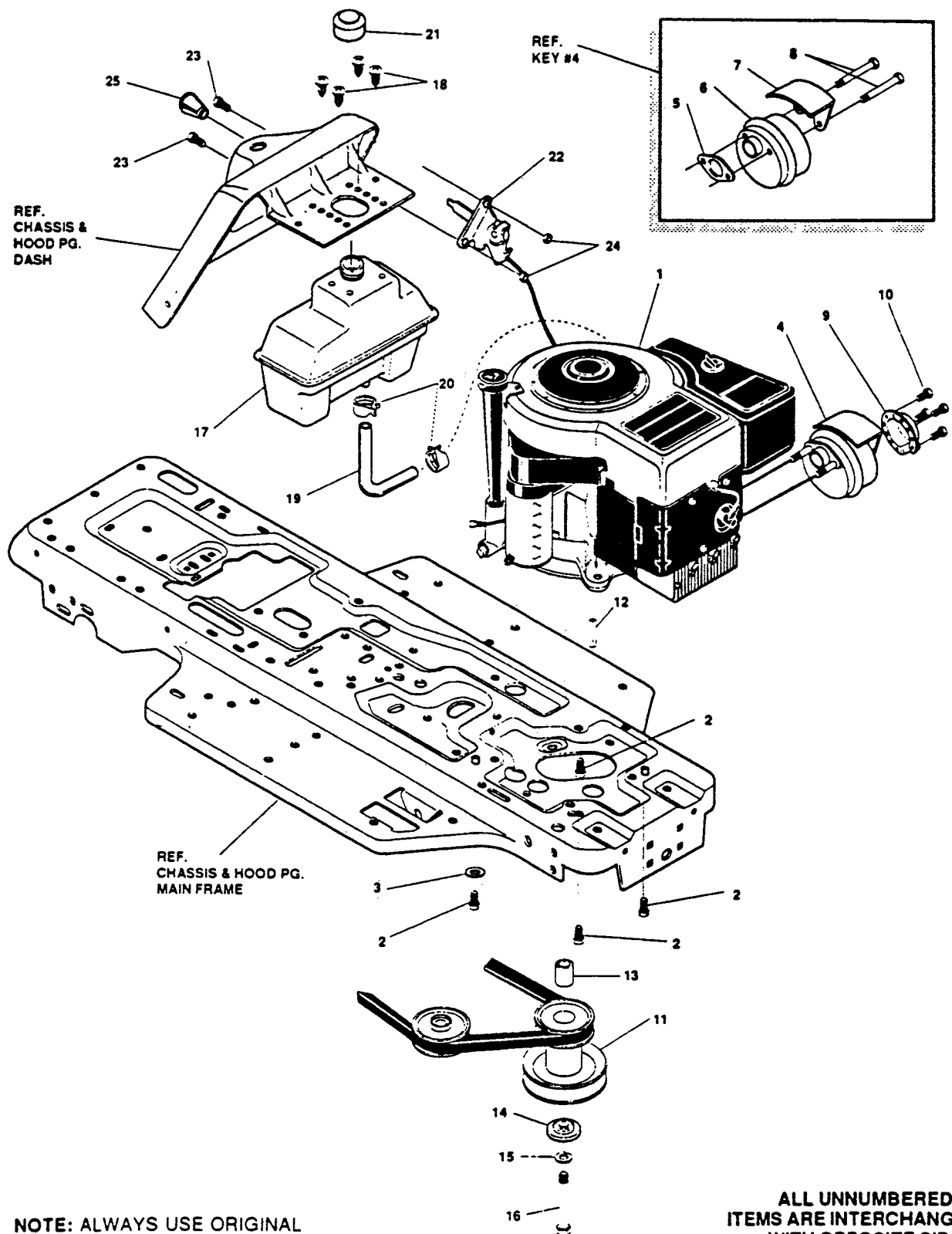
P/L 189324

O/M 189316

E/M 188953

P/B 395905

ENGINE & CONTROL ASSEMBLY



NOTE: ALWAYS USE ORIGINAL EQUIPMENT PARTS. Use of service/replacement parts other than original equipment parts may void your warranty.

ALL UNNUMBERED ITEMS ARE INTERCHANGABLE WITH OPPOSITE SIDE

321057A

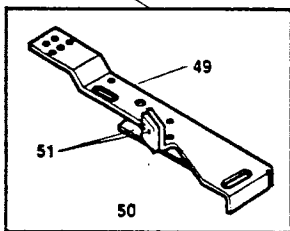
key#	part#	description	qty.
1	ENGINE	12 HP (SEE ENGINE MANUAL)	1
2	• 158014	SCREW, 3/8-16X1.25 WAHHTAP	4
3	153551	WASHER, EXLK .384X.69X.04	1
4	136218	MUFFLER ASSY	1
5	134692	GASKET, MUFFLER	1
6	136523	MUFFLER, ROUND DOMESTIC USE	1
7	• 096263	SHIELD, HEAT	1
8	312165	SCREW, 5/16-18X3.50 HHC	2
9	174797	DEFLECTOR SIDE OUT	1
10	158527	SCREW, 8-32X.38 HHWATAP	4
11	172197	PULLEY, ENGINE	1
12	162032	KEY, SQUARE .249SQX4.50LG	1
13	162354	SPACER, 1.01X1.484 ENGINE PULLEY	1
14	158253	WASHER, .98IDX1.38ODX.437 PILOT	1
15	• 311068	WASHER, REGSPTLK.459X.78X.12	1
16	• 162099	SCREW, 7/16-20X4.25 HHC	1
17	114785	TANK, FUEL 1 GALLON	1
18	157909	SCREW, 1/4-10 X .75 PHPNTAP	4
19	672832	GAS LINE .25ID BULK LENGTH	12"
20	154161	CLAMP, GAS LINE (1/2 DIA HOSE)	2
21	113118	GAS CAP	1
22	052753	THROTTLE CONTROL	1
23	336800	SCREW, 10-24X .50 SLHHMA	2
24	• 715334	NUT, #10-24 HEXKEPS	2
25	336628	KNOB, ROUND THROTTLE	1

• Indicates STANDARD HARDWARE ITEMS

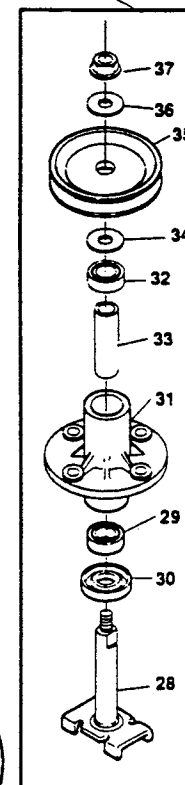
- This parts list covers several different mower models; not all of the parts listed may be used on the particular model you are working with.
- When servicing use only **Genuine Factory Replacement Parts (OEM)** that are specifically designed for the particular model that you are working with.
- Parts are right or left hand as viewed from the operator's position.
- Model specifications are subject to change without prior notice.
- **Do not operate** the mower unless all parts are attached and in good working order.
- Lawn mower deck and/or other painted parts differing in color may be substituted without notice.

PRE-PAINTED DECK ASSEMBLY

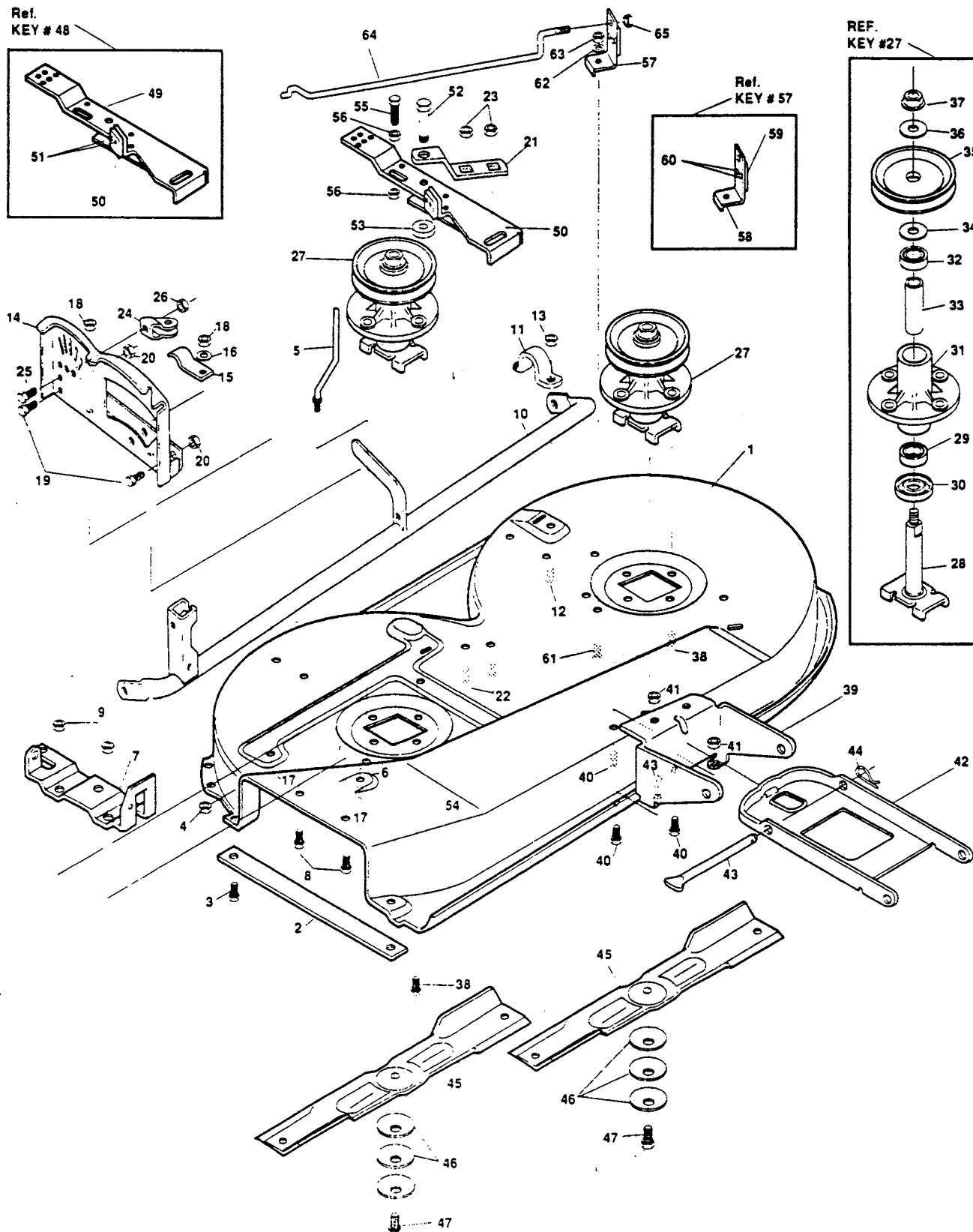
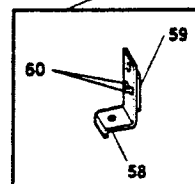
Ref.
KEY # 48



REF.
KEY #27



Ref.
KEY # 57



NOTE: ALWAYS USE ORIGINAL EQUIPMENT PARTS. Use of service/replacement parts other than original equipment parts may void your warranty.

ALL UNNUMBERED ITEMS ARE INTERCHANGABLE WITH OPPOSITE SIDE

319288B

Uses Grass Catcher Assembly Model 36/39/45
Grass Catcher P/N 228759
See p. 158 for breakdown

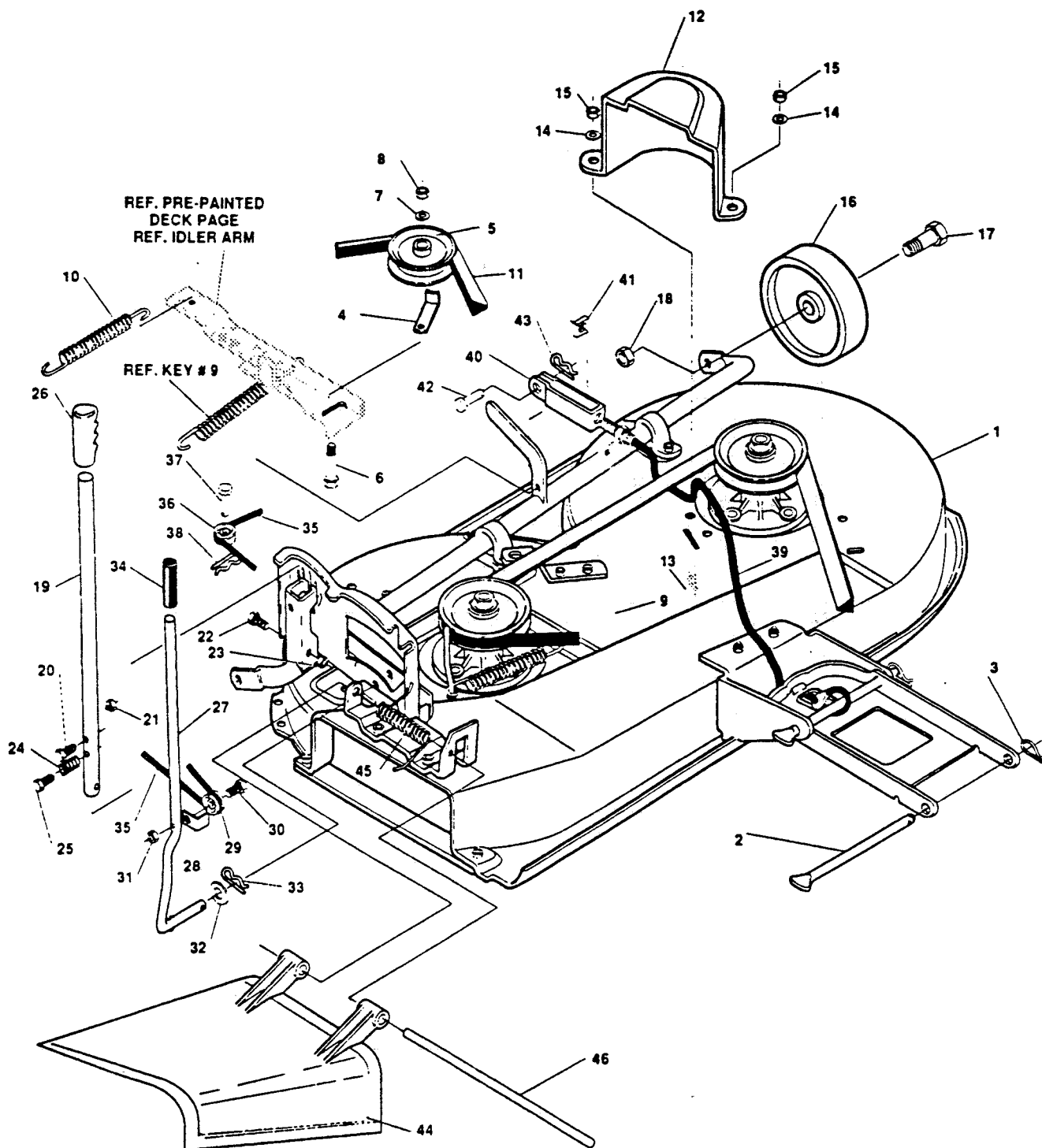
MODEL 405L
12 HP 36" Cut Front Engine Riding Mower

key#	part#	description	qty.
1	018754	DECK, MOWER	1
2	014456	BAR, SKID	1
3	313510	BOLT, 5/16-18X .75 CARR	2
4	150136	NUT, 5/16-18 HEXKEPS	2
5	172130	GUIDE, BELT 5/16-18 THD	1
6	616342	NUT, 5/16-18 REGHEXCTRLK	1
7	014449	BRACKET, CHUTE	1
8	312082	SCREW, 5/16-18X .50 HHC	2
9	616342	NUT, 5/16-18 REGHEXCTRLK	2
10	017053	PIVOT TUBE, ASSY 36"	1
11	014589	SUPPORT, PIVOT TUBE	1
12	450437	SCREW, 5/16-18X .63 HHC	1
13	616342	NUT, 5/16-18 REGHEXCTRLK	1
14	014605	QUADRANT, HEIGHT ADJUST	1
15	095265	SPRING, CLUTCH HANDLE	1
16	158113	WASHER, FLAT .312X .73X .065	1
17	450346	SCREW, 5/16-18X .75 HHC	2
18	616342	NUT, 5/16-18 REGHEXCTRLK	2
19	157958	SCREW, 5/16-18X1 50 HHC	2
20	616342	NUT, 5/16-18 REGHEXCTRLK	2
21	014464	BRACKET, IDLER SUPPORT	1
22	158998	SCREW, 5/16-18X .75 HHC	2
23	159236	NUT, 5/16-18 HWDFLCTRLK	2
24	095448	CABLE, PULLEY SUPPORT	1
25	450437	SCREW, 5/16-18X .63 HHC	1
26	616342	NUT, 5/16-18 REGHEXCTRLK	1
27	015891	QUILL ASSY, 36/39/40/43	2
28	098160	SHAFT/SADDLE 36"	1
29	095406	BRNG. BALL .669IDX1 575ODX.472	1
30	134981	DUST SHIELD	1
31	134973	QUILL CASTING (1046)	1
32	095406	BRNG. BALL .669IDX1 575ODX.472	1
33	095398	SPACER, SLEV 669X 88X3 797	1
34	156319	SPACER, SLEV .672X .93X .438PM	1
35	098152	PULLEY, 26/36" QUILL	1
36	157396	WASHER, SPECIAL QUILL	1
37	159301	NUT, 7/16-20 WDFLLK	1
38	159830	SCREW, 5/16-18X .88 WAHTAP	8
39	022715	BRKT, FRONT DECK	1
40	450437	SCREW, 5/16-18X .63 HHC	4
41	616342	NUT, 5/16-18 REGHEXCTRLK	4
42	022723	DRAWBAR, DECK	1
43	089391	ROD, DECK HITCH	1
44	715011	PIN, HAIR .091 DIA X1.66LG	1
45	016531	BLADE, 18 13 HIGH-LIFT	2
46	158055	WASHER, .39IDX1 25DX 07 BELLVIL	6
47	158543	SCREW, 3/8-24X1 00 NYLHHC	2
48	098053	BRACKET, IDLER ARM/BRAKE	1
49	014084	IDLER ARM	1
50	135046	BRAKE PAD - HARD	1
51	159152	RIVET, OVSET .187DIA X 50LG	2
52	158733	BOLT, .50 X1 88 HHSH 3/8-16	1
53	158337	WASHER, FLAT .391X1 00X.125	2
54	715482	NUT, 3/8-16 HWDFL WHIZ-LOCK	1
55	150433	SCREW, 1/4-20X2 00 HHC	1
56	715037	NUT, 1/4-20 REGHEXKEPS	2
57	172619	ASSY BLADE BRAKE 36,39,45	1
58	172601	BRAKE ARM	1
59	135046	BRAKE PAD - HARD	1
60	159186	RIVET, TRSET .185DIA X .41LG ST	2
61	450437	SCREW, 5/16-18X .63 HHC	1
62	715185	WASHER, FLAT .344X .69X .065	1
63	616342	NUT, 5/16-18 REGHEXCTRLK	1
64	097618	ROD BRAKE RELEASE	1
65	616375	NUT, 1/4-20 REGHEXCTRLK	1

• STANDARD
HARDWARE ITEMS.

- This parts list covers several different mower models, not all of the parts listed may be used on the particular model you are working with
- When servicing use only **Genuine Factory Replacement Parts (OEM)** that are specifically designed for the particular model that you are working with
- Parts are right or left hand as viewed from the operator's position
- Model specifications are subject to change without prior notice
- **Do not operate** the mower unless all parts are attached and in good working order
- Lawn mower deck and/or other painted parts differing in color may be substituted without notice

FINAL DECK ASSEMBLY



NOTE: ALWAYS USE ORIGINAL EQUIPMENT PARTS
 Use of service/replacement parts other than original equipment parts may void your warranty.

**ALL UNNUMBERED
 ITEMS ARE INTERCHANGABLE
 WITH OPPOSITE SIDE**

319287B

Uses Grass Catcher Assembly Model 36/39/45
Grass Catcher P/N 228759
See p. 158 for breakdown

MODEL 405L
12 HP 36" Cut Front Engine Riding Mower

key#	part#	description	qty
1.		DECK, 36SDGS 2WH ASSY	1
2	089391	ROD, DECK HITCH Z-PL	1
3.	715011	PIN, HAIR 091 DIA X 1.66LG	1
4	086363	RETAINER, BELT	1
5.	086363 098004	PULLEY, IDLER BFF 4.00 WIDE FL	1
6.	158444	BOLT, 3/8-16X2.00 CARR	1
7.	150185	WASHER, REGSPTLK.393X.68X 10	1
8.	715391	NUT, 3/8-16 REGHX	1
9.	091910	SPRING .75X8 4X.105	1
10.	098111	SPRING, .75X6.3X 105 TENSION	1
11.	135855	BELT, V 5L 75 25 36/45 SD"	1
12	113209	GUARD, BELT LH PLASTIC	1
13	450437	SCREW, 5/16-18X .63 HHC	3
14.	715185	WASHER, FLAT .344X .69X .065	3
15	• 616342	NUT, 5/16-18 REGHEXCTRLK	3
16	042226	WHEEL, SD 6 00ODX1 38WD	2
17	157495	BOLT, 500X1 390 HSH 3-8-16	2
18.	• 310011	NUT, 3 8-16 REGHXCTRLK	2
19	022756	LEVER, DECK HEIGHT ADJUST	1
20	159079	BOLT, 5 16-18X 56 SPCUHD LATCH	1
21	• 150136	NUT, 5 16-18 HEXKEPS	1
22	157958	SCREW 5 16-18X1 50 HHC	1
23	616342	NUT, 5 16-18 REGHEXCTRLK	1
24	109991	SPRING 70X 85X 091 COM HANDLE	1
25	• 158089	SCREW, 1 4-20X 50 WAHTAP	1
26	112250	GRIP HAND 75 X 4 25	1
27	096305	LEVER, CLUTCH	1
28	089557	BRACKET, CABLE RETAINER	1
29	112177	PULLEY, 906X 305 NYLON	1
30	157446	BOLT 375X 375 HSH 1 4-20	1
31	• 616375	NUT 1 4-20 REGHEXCTRLK	1
32	156075	WASHER FLAT 531X1 06X 095	1
33	715011	PIN HAIR 091 DIA X 1.66LG	1
34	112193	GRIP HAND 501D 3 37LG	1
35	051698	CABLE CLUTCH 17.5"	1
36	112177	PULLEY, 906X 305 NYLON	1
37	158204	PIN CLEVIS 375DX 81LG	1
38	715029	PIN COTTER .090 086X 75LG	1
39	051664	CABLE LIFT 21 70 F-5 20X8-8	1
40	159137	CLEVIS LIFT CABLE	1
41	• 157966	NUT, 1 4-20 REGSO	1
42	157263	PIN, CLEVIS 312 X 812	1
43	715011	PIN, HAIR 091 DIA X 1.62LG	1
44	113076	CHUTE-36SD 39SD.45SD	1
45	164152	SPRING TORSION CHUTE DEF	1
46	096438	PIVOT ROD, CHUTE	1

- Indicates STANDARD HARDWARE ITEMS
- * ORDER INDIVIDUAL PARTS

- This parts list covers several different mower models; not all of the parts listed may be used on the particular model you are working with.
- When servicing use only **Genuine Factory Replacement Parts (OEM)** that are specifically designed for the particular model that you are working with.
- Parts are right or left hand as viewed from the operator's position.
- Model specifications are subject to change without prior notice.
- Do not operate the mower unless all parts are attached and in good working order.
- Lawn mower deck and/or other painted parts differing in color may be substituted without notice.

S/N 231936

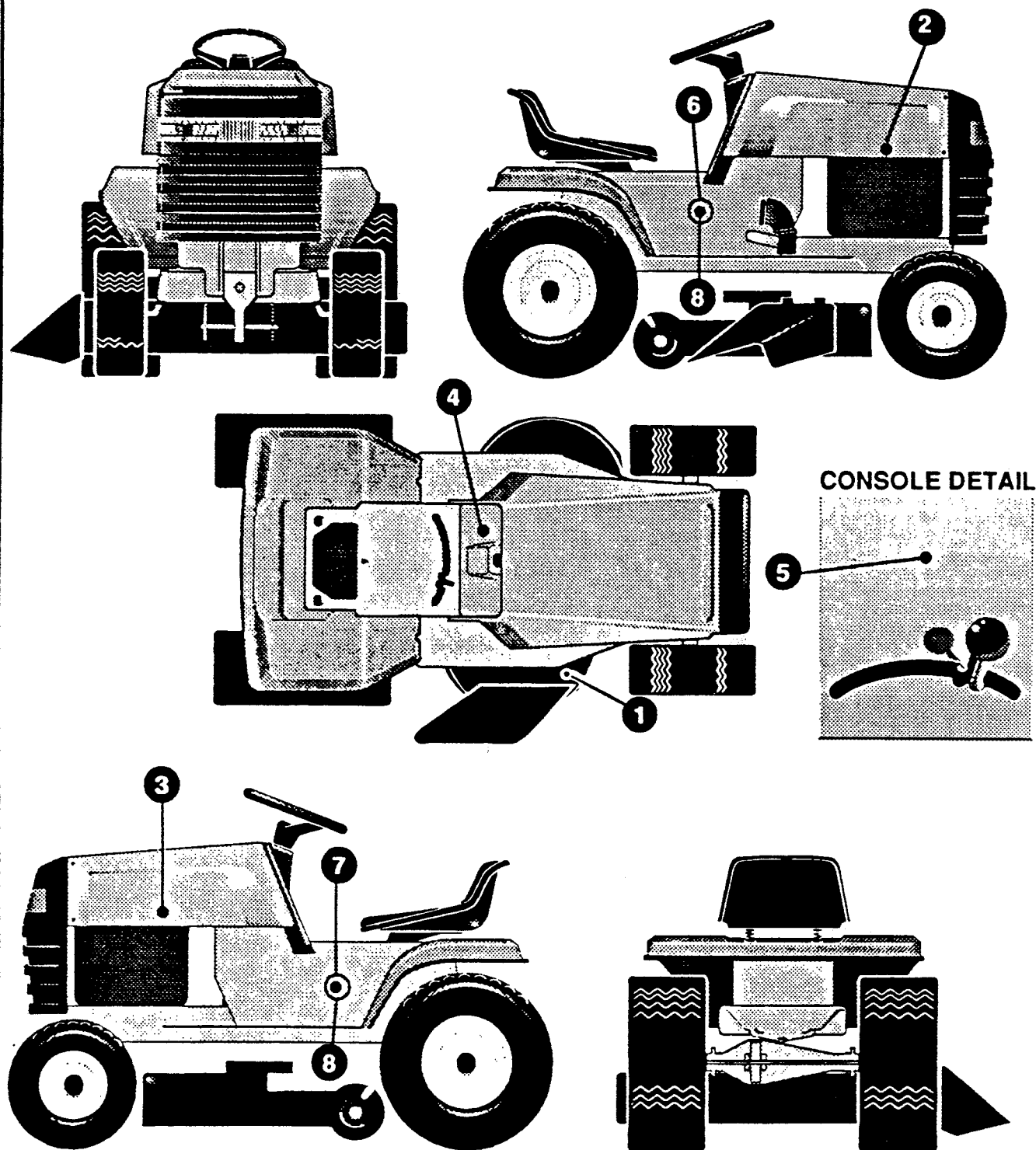
P/L 189324

O/M 189316

E/M 188953

P/B 395905

DECALS



NOTE: ALWAYS USE ORIGINAL EQUIPMENT PARTS.
 Use of service/replacement parts other than original equipment parts may void your warranty.

**ALL UNNUMBERED
 ITEMS ARE INTERCHANGABLE
 WITH OPPOSITE SIDE**

321058

key#	part#	description	qty
1	796482	DECAL, BLADE HGT ADJUST	1
2	796490	DECAL, HOODSIDE RH	1
3	796508	DECAL, HOODSIDE LH	1
4	796516	DECAL DASH	1
5	796524	DECAL, CONSOLE TOP STRETCH 3-SP	1
6	796532	DECAL, CONSOLE RH STRETCH FRM	1
7	796540	DECAL, CONSOLE LH STRETCH FRM	1
8	114827	NAME PLATE, 12/36 WHITE	2
9		REFERENCE ONLY	1

- This parts list covers several different mower models; not all of the parts listed may be used on the particular model you are working with.
- When servicing use only **Genuine Factory Replacement Parts (OEM)** that are specifically designed for the particular model that you are working with.
- Parts are right or left hand as viewed from the operator's position.
- Model specifications are subject to change without prior notice.
- **Do not operate** the mower unless all parts are attached and in good working order.
- Lawn mower deck and/or other painted parts differing in color may be substituted without notice.