



# Service Kit 753-04375

CODE: PE-126

DATE: FEBRUARY 4, 2003

SUBJECT: Conversion Kit for Grass  
Bagger Accessory Model  
OEM-190-103

MODELS Model Series Tractors 660-  
AFFECTED: 690, 600 - 619, 820, 840 and  
800 - 819.

**PURPOSE:** Use this kit to upgrade an OEM-190-103 Grass Bagger to an OEM-190-182 FastAttach Grass Bagger. This kit will convert a OEM-190-103 Grass Bagger to fit on 660 through 690, 820 and 840 Series Box Frame Tractors, 600 through 619 and 800 through 819 Series StepThru Frame Tractors equipped with a 46" cutting deck.

**NOTE:** Save this Instruction Sheet. Refer to it when ordering replacement parts.

**Typical Installation Time:** N/A

## Service Kit Contents

REF. NO.	PART NUMBER	QTY	DESCRIPTION
1	783-0765	1	Support Cross Bracket
2	783-0764	1	LH Support Catcher Bracket
3	783-0673	1	RH Support Catcher Bracket
4	783-04137	1	LH Catcher Support Bracket
5	783-04132	1	RH Catcher Support Bracket
6	710-3008	4	Hex Head Screw, 5/16-18 x 3/4", GR5
7	711-0309A	1	Clevis Pin, 5/8" Diameter
8	711-0310	1	Clevis Pin, 1/2" x 1 3/16" Lg
9	712-0459	2	Flange Lock Nut, 7/16-20
10	712-3004A	4	Flange Lock Nut, 5/16-18
11	714-0117	1	Internal Cotter Pin
12	736-0407	2	Bell Washer, 29/64" I.D. x 1" O.D.
13	738-1020	2	Shoulder Screw, 5/8" x 1/2" Lg
14	710-0623	4	Screw, Self Tapping, 3/8"-16 x .75
15	783-04138	2	800 Catcher Support Bracket

**NOTE:** If the grass bagger you purchased contains this kit you will need to follow these instructions in place of the instructions in your Owner's Manual noted under the heading "Assembling Support Brackets". This insures you will install the correct brackets for your model tractor.

**NOTE:** References to LEFT, RIGHT, FRONT and REAR of the tractor are from the operator's position.

**NOTE:** Before assembly, place the tractor on a firm, level surface, disengage the PTO, stop the tractor engine and set the parking brake.

## Tractor Model Series 660 through 690

**NOTE:** If your tractor is a series 660 through 690 box frame frame style you will not need Ref. No.'s 14 and 15. You will need Ref. No.'s. 1 through 13.

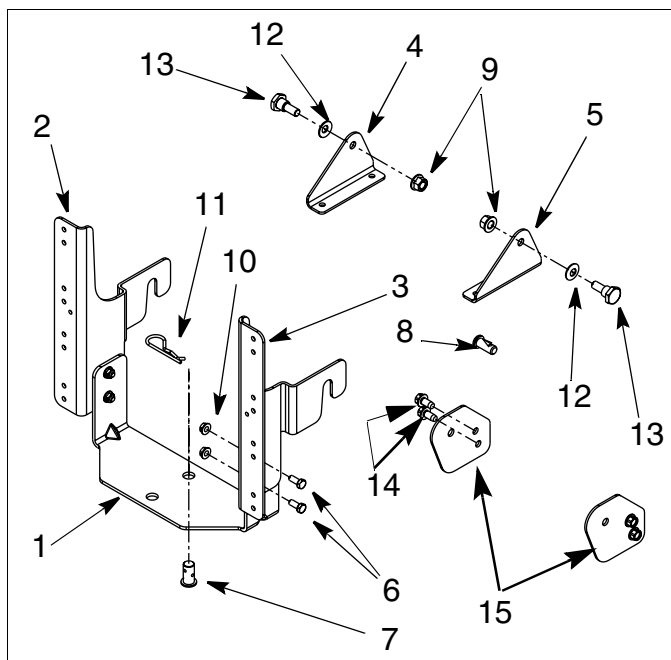


Figure 1

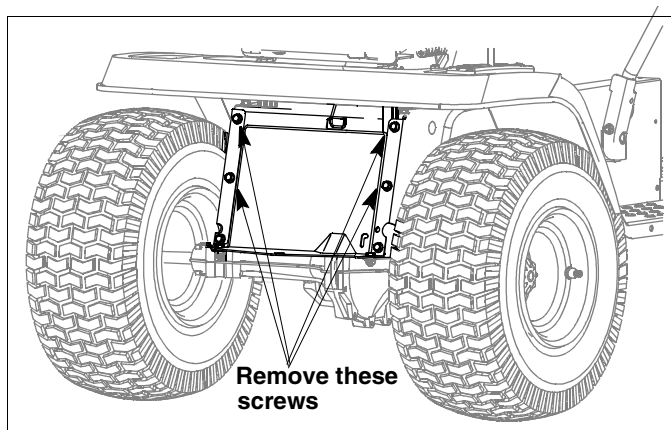


Figure 2

Form No. 769-00646

### Assembling Support Brackets

- Remove the top four self-tapping screws from the rear of the lawn tractor. See Figure 2.
- Place the RH Catcher Support Bracket (Ref. No. 5) in position as shown in Figure 3.
- Secure the Catcher Support Bracket to the tractor frame with two self-tapping screws removed earlier. Refer to Figure 2. Repeat on the left hand side using the LH Catcher Support Bracket (Ref. No. 4).

**NOTE:** If the grass collection system is removed for any reason, it is not necessary to remove the support brackets from the tractor.

- Insert a Shoulder Screw (Ref. No. 13) through a Bell Washer (Ref. No. 12).

**NOTE:** When placing the bell washer onto the shoulder screw make sure that the concave side of the bell washer is facing away from the head of the shoulder screw.

- From the outside of the Catcher Support Bracket insert the Shoulder Screw/Bell Washer subassembly through the hole. Secure with a Flange Lock Nut (Ref. No. 9). See Figure 3 inset for details. Repeat on other side.

#### <> ( Continuation step for Series 820 and 840 units)

- Place the Support Cross Bracket (Ref. No.1) between the LH Support Catcher Bracket (Ref. No. 2) and the RH Support Catcher Bracket (Ref. No. 3). Position the Support Cross Bracket as shown in Figure 4
- Install the four (4) Hex Head Screws (Ref. No. 6) through the LH and RH Support Catcher Brackets and Support Cross Bracket and secure with four (4) Flange Lock Nuts (Ref. No. 10). Do not tighten, leave slightly loose. Refer to Figure 1.
- Position the hooked ends of the Support Catcher Bracket Subassembly to the outside of the Catcher Support Brackets and over the shoulder bolts on both sides as shown in Figure 5.
- Align the hole at the lower end of the support bracket subassembly to the hole on the hitch plate on the tractor and insert the Clevis Pin (Ref. No. 7) through these two holes. Secure the Clevis Pin with the Internal Cotter Pin (Ref. 11). See Figure 6.

**NOTE:** For some tractor models, this clevis pin is too large. Use a smaller clevis pin ( Ref. No. 8) in its place with the same hairpin clip.

- Refer to "Section 8: Parts List for 063 & 103" of the Owner's Manual included with your grass bagger accessory.
- Locate the support tube mounting brackets (2) (P/N 783-0601).

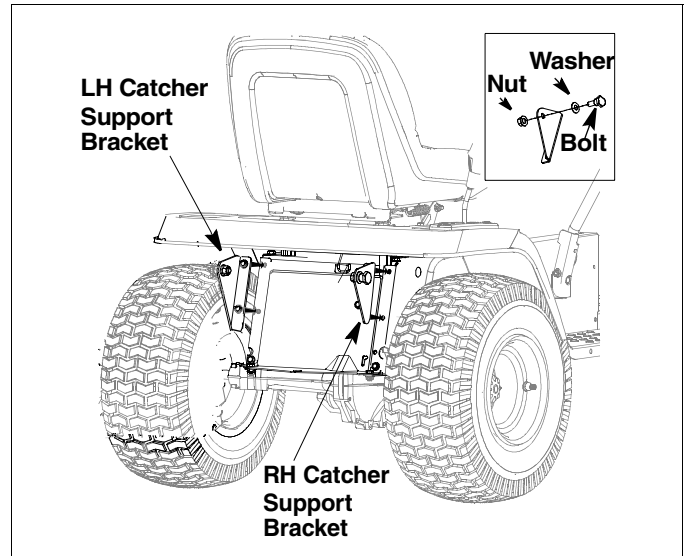


Figure 3

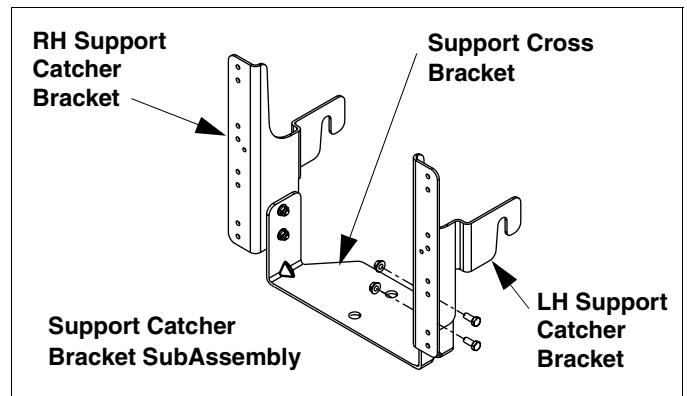


Figure 4

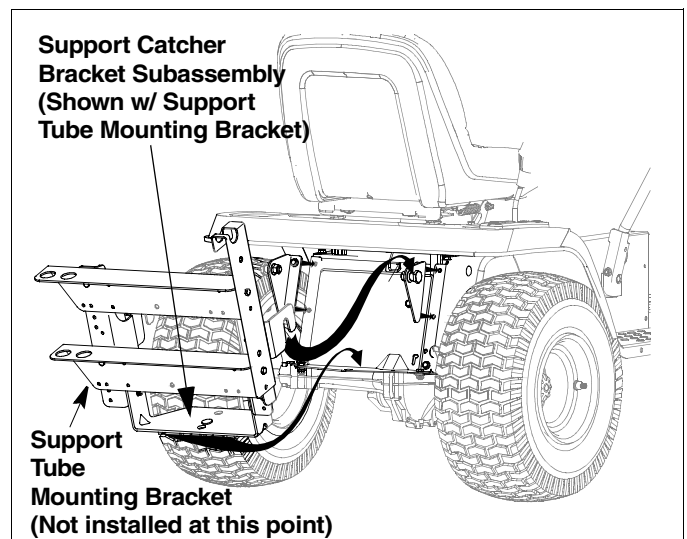
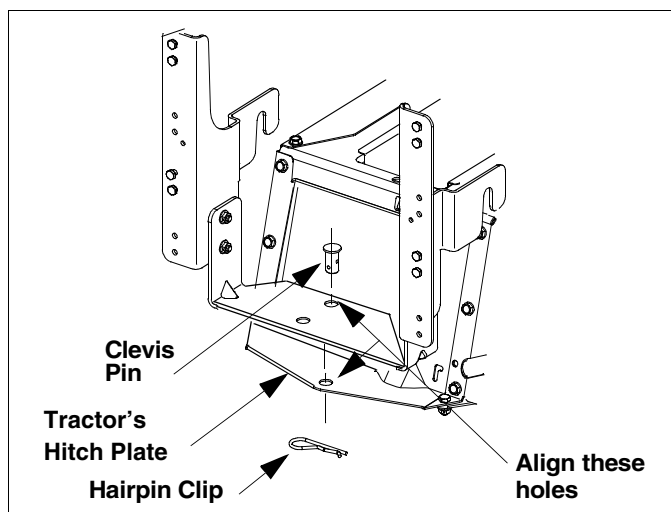


Figure 5

- Locate Figure 8 in “Section 3: Assembly & Operation” of the Owner’s Manual included with your grass bagger accessory.
- Follow the instructions starting at the step just above Figure 8. Attach the support tube mounting brackets and the latch support bracket to the Support Catcher Brackets Subassembly installed on the back of the tractor. Do not tighten any hardware, leave slightly loose
- When all the brackets are aligned and hardware installed tighten all hardware securely. This will ensure proper alignment of the Fast Attach Catcher Support Assembly to the 3 attach points on the tractor.
- This completes the assembly of the Catcher Support Bracket Assembly using this kit. Please continue with the assembly of the grass bagger as instructed in the Owner’s Manual that came with the grass bagger accessory.



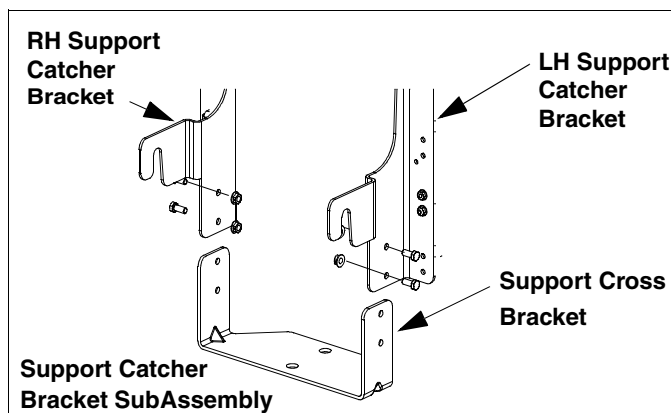
**Figure 6**

## Tractor Model Series 600 through 619 and 800 through 819

**NOTE:** If your tractor is a series 600 through 619 or 800 through 819 step through frame style you will not need Ref. No.'s 4,5,9,12,13, 14 and 15. The Shoulder Screws (Ref. No. 13) are already mounted to the tractor frame at the factory. You will need Ref. No's. 1- 3, 6- 8, 10 and 11)

### Assembling Support Brackets

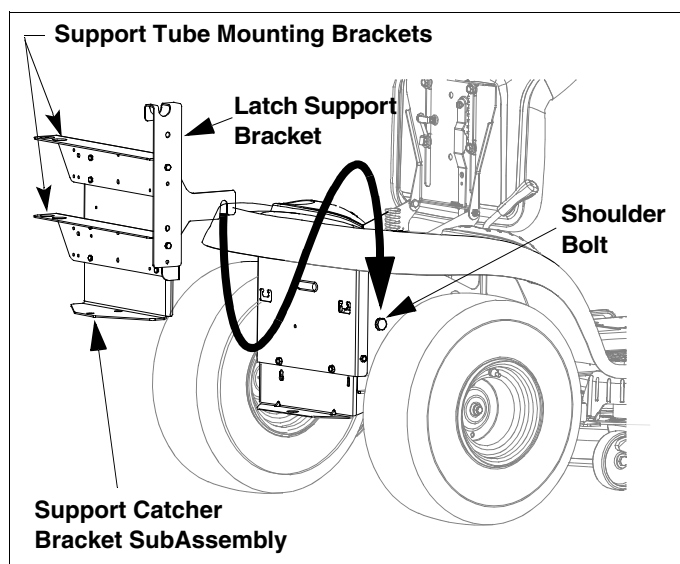
- Place the Support Cross Bracket (Ref. No.1) between the LH Support Catcher Bracket (Ref. No. 2) and the RH Support Catcher Bracket (Ref. No. 3). Position the Support Cross Bracket as shown in Figure 7 .
- Install the four (4) Hex Head Screws (Ref. No. 6) through the LH and RH Support Catcher Brackets and Support Cross Bracket and secure with Flanged Lock Nuts (Ref. No. 10). Do not tighten, leave slightly loose. Refer to Figure 7.
- Position the hooked ends of the Support Catcher Bracket Subassembly to the outside of the rear tractor frame and over the existing shoulder bolts on both sides as shown in Figure 8.



**Figure 7**

**NOTE:** Figure 8 shows the completed catcher support bracket assembly which will be assembled in the following steps.

- Align the hole at the lower end of the support bracket subassembly to the hole on the hitch plate on the tractor and insert the Clevis Pin (Ref. No. 7) through these two holes. Secure the Clevis Pin with the Internal Cotter Pin (Ref. 11). See Figure 9.



**Figure 8**

**IMPORTANT:** Be sure to insert the hairpin clip in the upper hole of the clevis pin.

- Refer to "Section 8: Parts List for 063 & 103" of the Owner's Manual included with your grass bagger accessory.
- Locate the support tube mounting brackets (P/N 783-0601).
- Locate Figure 8 in "Section 3: Assembly & Operation" of the Owner's Manual included with your grass bagger accessory.
- Follow the instructions starting at the step just above Figure 8. Attach the support tube mounting brackets and the latch support bracket to the Support Catcher Brackets Subassembly installed on the back of the tractor. Do not tighten any hardware, leave slightly loose
- When all the brackets are aligned and hardware installed tighten all hardware securely. This will ensure proper alignment of the Fast Attach Catcher Support Assembly.
- This completes the assembly of the Catcher Support Bracket Assembly using this kit. Please continue with the assembly of the grass bagger as instructed in the Owner's Manual that came with the grass bagger accessory.

## Tractor Model Series 820 and 840

**NOTE:** If your tractor is a series 820 or 840 box frame style you will not need Ref. No.'s 4 and 5. You will need Ref. No's. 1-3 and 6-15.

- Place one Catcher Support Bracket (Ref. No. 15) on each side of the tractor frame aligning the two smaller holes on the bracket with the corresponding holes on the tractor frame as shown in Figure 10.
- Secure the Catcher Support Brackets to the tractor frame with two Self-Tapping Screws (Ref. No.14). See Figure 10.

**NOTE:** If the grass collection system is removed for any reason, it is not necessary to remove the support brackets from the tractor.

- Insert a Shoulder Screw (Ref. No. 13) through a Bell Washer (Ref. No. 12).

**NOTE:** When placing the bell washer onto the shoulder screw make sure that the concave side of the bell washer is facing away from the head of the shoulder screw.

- From the outside of the Catcher Support Bracket insert the Shoulder Screw/Bell Washer subassembly through the hole on the Catcher Support Bracket. Secure with a Flange Lock Nut (Ref. No. 9). See Figure 10. Repeat on other side.

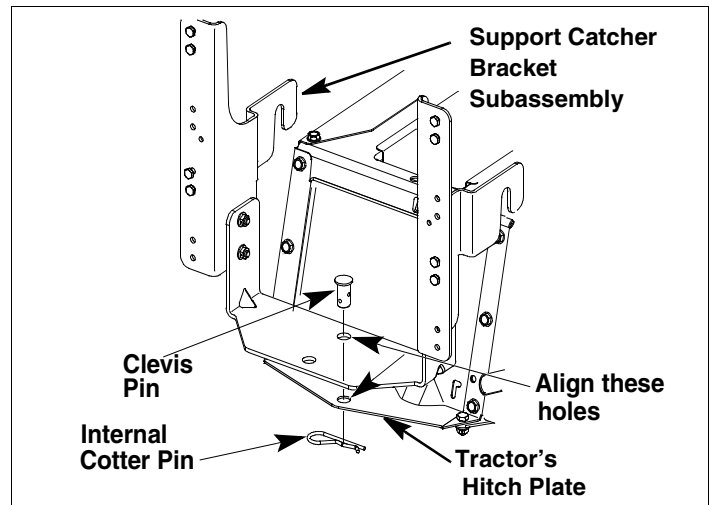


Figure 9

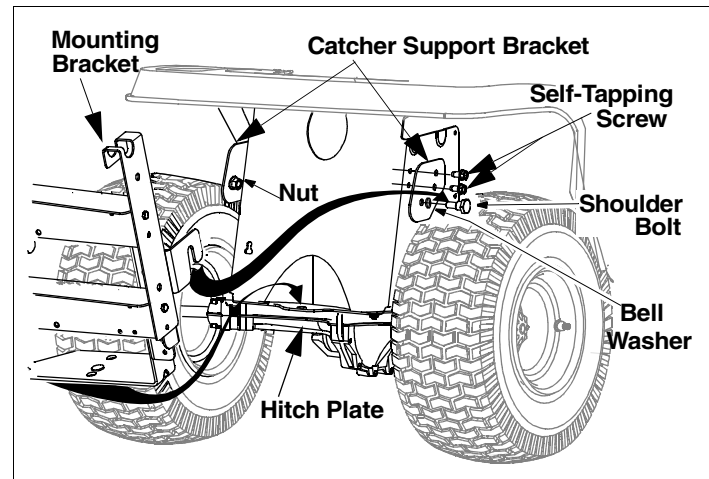


Figure 10

- Continue with the assembly of the support catcher assembly by following the instructions on page 2 from the step denoted by ( <> ).