



# Service Kit

## 753-05002

Date: 03/10/2005

Subject: Service Replacement for the  
**618-0376** - Two (2) Speed  
Transmission

Models Affected: 800 Series AutoDrive Garden  
Tractors w/Step Thru Frame,  
1999 through 2003 model  
years.

**PURPOSE: Read through and understand these instructions completely before proceeding with repair.**

This kit is the service replacement for the 618-0376 transmission which is No-Longer-Available (NLA).

**NOTE:** These materials are prepared for use by trained technicians who are experienced in the service and repair of equipment of the kind described in this publication, and are not intended for use by untrained or inexperienced individuals. Such individuals should seek the assistance of an authorized service technician or dealer.

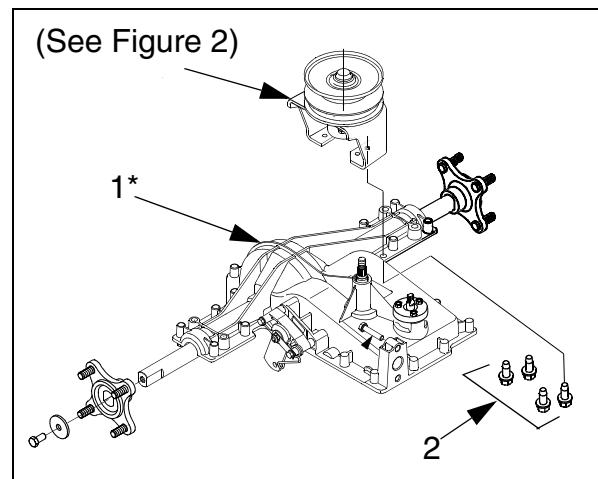
**NOTE:** Save this Instruction Sheet. Refer to it when ordering replacement parts.

### Service Kit Contents (See Figures 1 and 2)

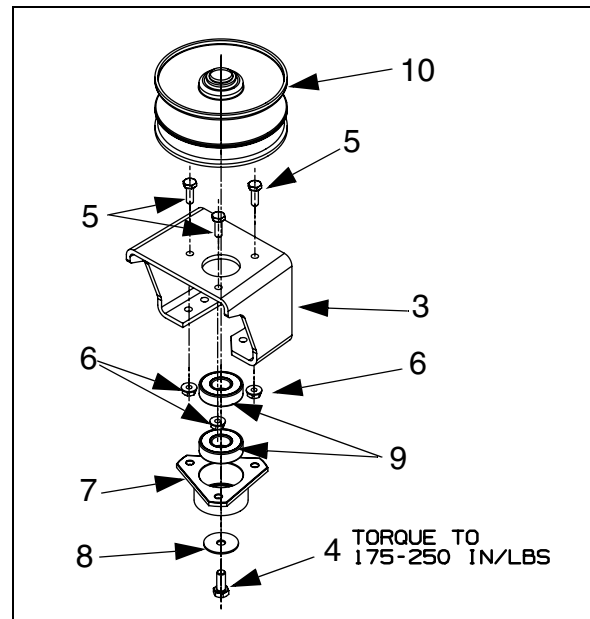
ITEM NO.	PART NUMBER	QTY	DESCRIPTION
1*	618-0376A	1	2 SPEED TRANSMISSION
2	710-0726	4	AB SCREW: 5/16-12 x 0.75 (Self-Tapping)
3**	618-04152	1	VARIABLE SPEED BRACKET
4**	710-0627	1	LOCK BOLT, 5/16"-24 x 0.75"
5**	710-3015	3	HEX BOLT, 1/4"-20 x 0.75"
6**	712-3027	3	FLANGED LOCK NUT
7**	718-04012	1	BEARING CUP
8**	736-0362	1	FLAT WASHER
9**	741-0600	2	BALL BEARING
10**	656-04015	1	VARIABLE SPEED PULLEY
11	769-01606	1	THIS INSTRUCTION SHEET

\* - See Page 2 for transmission illustrated parts list.

\*\* - Items 3 through 10 are available as assembly 618-04148.



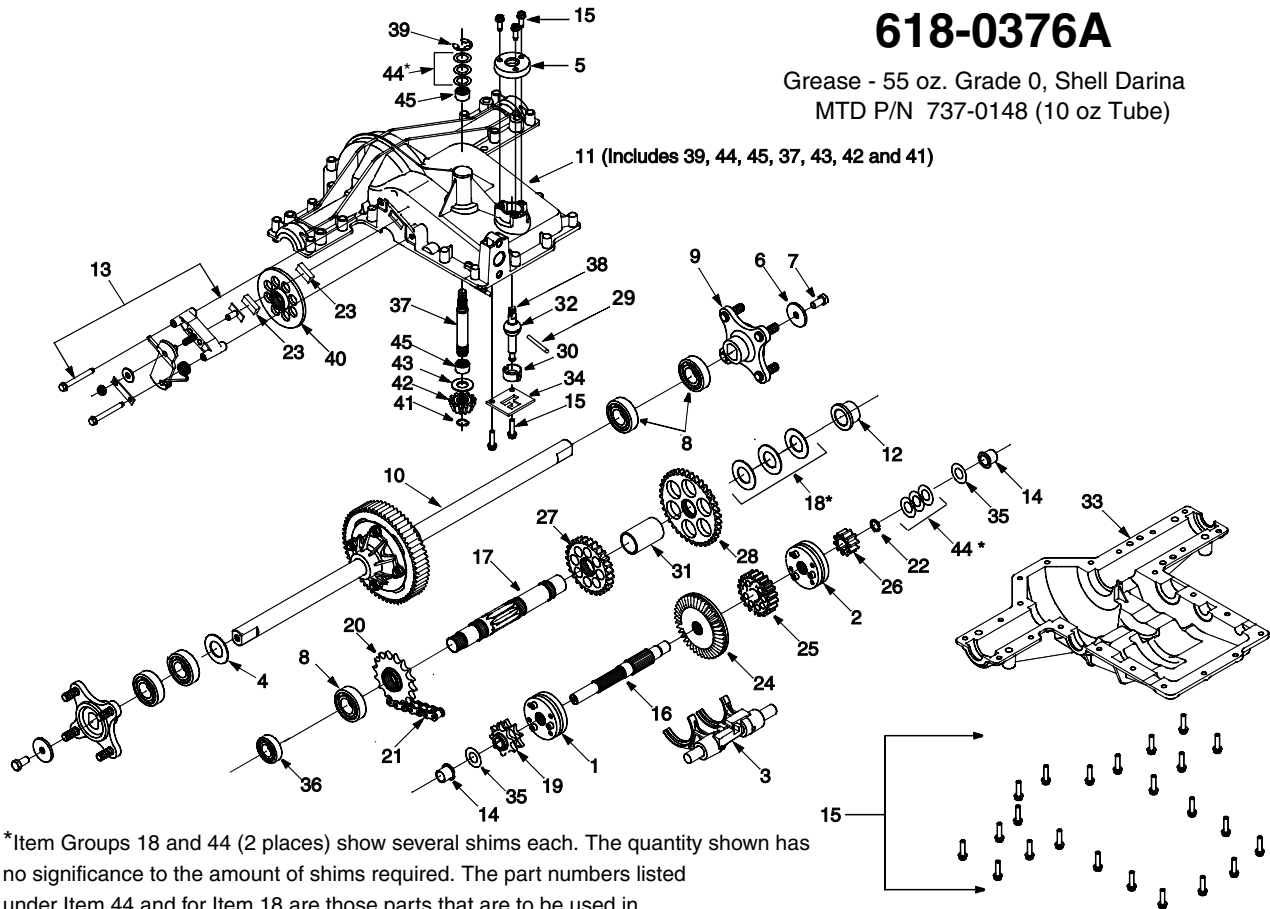
**FIGURE 1**



**FIGURE 2**

# 618-0376A

Grease - 55 oz. Grade 0, Shell Darina  
MTD P/N 737-0148 (10 oz Tube)



\*Item Groups 18 and 44 (2 places) show several shims each. The quantity shown has no significance to the amount of shims required. The part numbers listed under Item 44 and for Item 18 are those parts that are to be used in shimming to attain the allowable end play per specification.

REF. NO.	PART NO.	DESCRIPTION
1	618-0225	Reverse Collar Assembly
2	618-0226	Hi-Lo Collar Assembly
3	618-04156	Shift Fork Assembly
4	736-0745	Flat Washer, 1.01" x 1.56" x .060"
5	718-04053	Shifter Cover
6	736-0227	Flat Washer
7	710-3119	Lock Bolt, 3/8"-16 x 0.75"
8	741-0681	Ball Bearing
9	618-04115	Wheel Hub Assembly
10	618-04142	Differential Axle Assembly
11	619-04081	Upper Housing Assembly
12	741-04086	Flanged Bearing
13	661-0012	Brake Assembly
14	741-04085	Flanged Bearing
15	710-0788	Self Tapping Screw, 1/4"-20 x 1.00"
16	711-1051A	Drive Shaft
17	711-1216	Output Shaft
18	736-0715	Flat Washer, 1.12" x 1.75" x .03"
19	713-0446	9-Tooth Sprocket
20	713-0447	16-Tooth Sprocket
21	713-0448	22 Link Chain, .625 P
22	716-0131	External Snp Ring
23	717-0678	Brake Pad
24	717-1438A	41-Tooth Bevel Gear
25	717-1439A	20-Tooth Spur Gear

REF. NO.	PART NO.	DESCRIPTION
26	717-1440	10-Tooth Spur Gear
27	717-04109	27-Tooth Spur Gear
28	717-04110	37 Tooth Spur Gear
29	715-04017A	Dowel Pin
30	718-0504	Shifter Insert
31	750-04244	Spacer
32	718-04066	Spherical Bearing, 1.00"
33	719-04083	Lower Housing
34	718-0540	Lockout Plate
35	736-0167	Flat Washer, .656" x 1.25" x .02"
36	721-04031	Oil Seal, 1.00" Shaft x 1.499" Bore
37	711-1235	Input Shaft
38	711-04215	Shift Lever
39	716-0231	E-Ring, .75"
40	761-0215	Disc Brake
41	716-0114	Retaining Ring, .56" Dia. Shaft
42	717-1463A	13-Tooth Bevel Gear
43	736-0335	Flat Washer,
44	736-0336	Flat Washer, 5/8" x 1.0" x .030"
	736-0337	Flat Washer, 5/8" x 1.0" x .040"
	736-0349	Flat Washer, 5/8" x 1.0" x .020"
	736-0494	Flat Washer, 5/8" x 1.0" x .035"
	736-0495	Flat Washer, 5/8" x 1.0" x .025"
45	741-0335	Needle Bearing