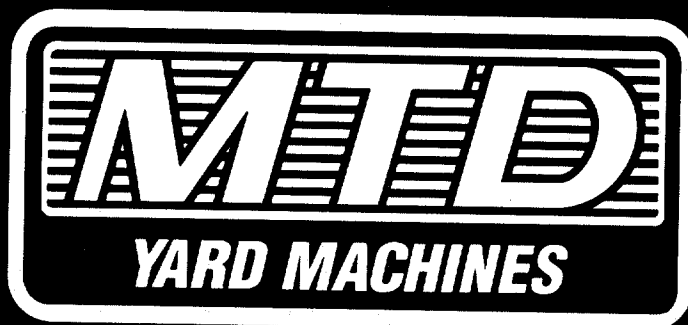


# ILLUSTRATED PARTS

AMERICAN  AMERICAN  
M A D E O W N E D  
OUTDOOR POWER EQUIPMENT



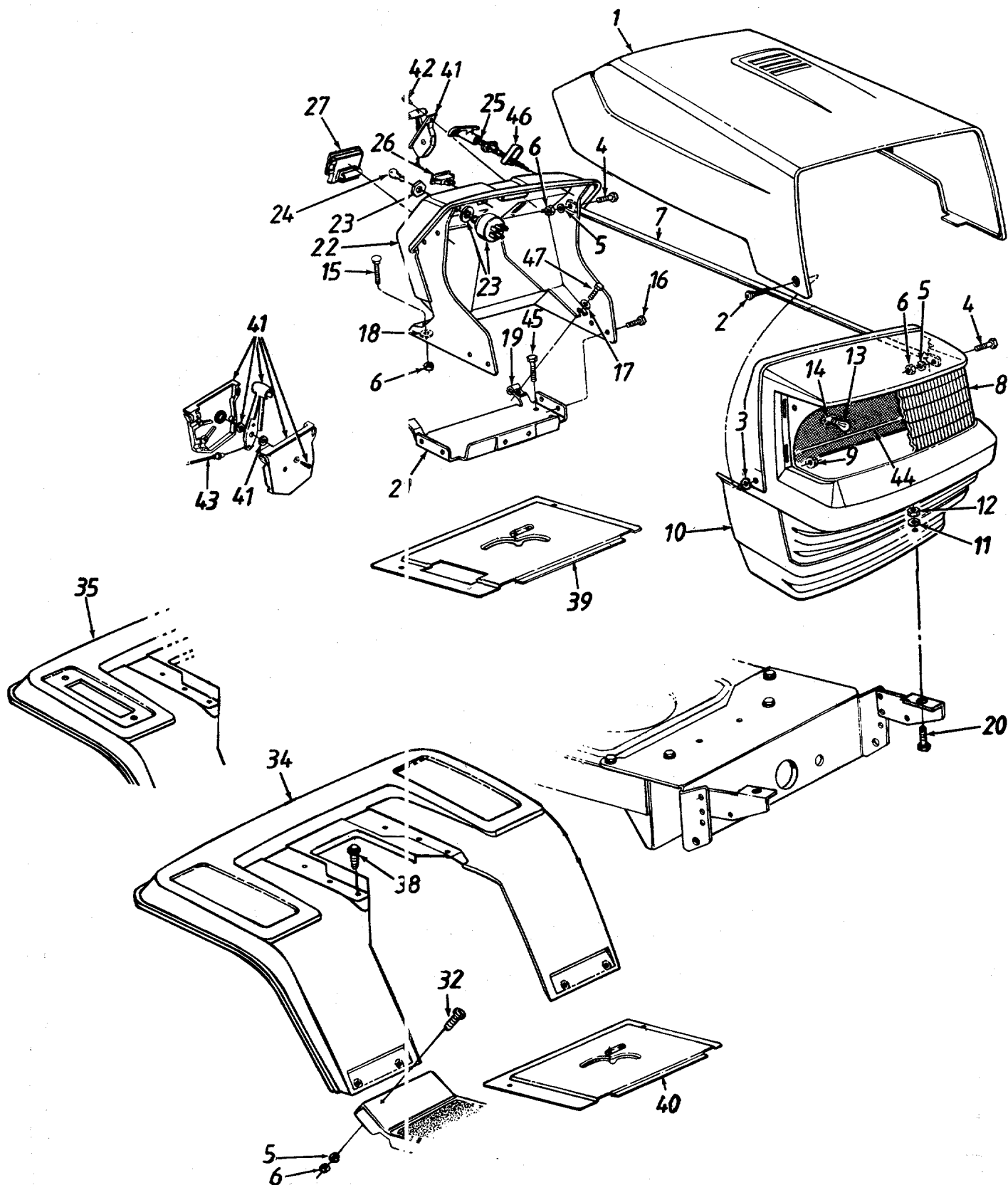
1995

**Transmatic Lawn Tractors**  
**660 thru 679 Series**

MTD PRODUCTS INC • P.O. BOX 368022 • CLEVELAND, OHIO 44136-9722

FORM NO. 770-95-3E

# Style 0



# Style 0

## PARTS LIST FOR MODELS 660 AND 670 LAWN TRACTORS

REF. NO.	PART NO.	CODE	DESCRIPTION	REF. NO.	PART NO.	CODE	DESCRIPTION
1	783-0250		Hood	25	746-0616A		Choke Control†
2	738-0724		Shld. Bolt .375" Dia. x .125" Lg.		746-0614A		Choke Control††
3	736-0342		Fl-Wash. .28" I.D. x .75" O.D.		746-0720	N	Choke Control (Tec.)
4	710-0258		Hex Bolt 1/4-20 x .62" Lg.*		746-3021		Choke Control (Vanguard)
5	736-0329		L-Wash. 1/4" I.D.*	26	725-0634		Light Switch**
6	712-0287		Hex Nut 1/4-20 Thd.*	27	725-0925		Ammeter**
7	749-0812		Grille Support Rod	32	710-0286		Truss Mach. Scr. 1/4-20 x .5" Lg.
8	731-1099A		Headlight Lens	34	17870		Fender
9	712-0380		Flange L-Nut 1/4-28 Thd.	35	17871A		Fender w/Cutout
10	731-1097B		Grille	38	710-0726		Hex Wash. Hd. AB-Tap Scr. 5/16 x .75" Lg.
11	736-3078		Fl-Wash. .344" I.D. x 1" O.D.	39	17954A		Shift Cover w/Cutout
12	712-0267		Hex Nut 5/16-18 Thd.*	40	17286A		Shift Cover
13	725-0963		Lamp	41	831-0823A		Throttle Box Ass'y.
14	725-1649		Socket	42	710-0779A		Truss Mach. AB-Tap Scr. #10 x .5" Lg.
15	710-0703		Carriage Bolt 1/4-20 x .75" Lg.	43	746-0776	N	Throttle Control Wire†
16	710-0599		Hex Wash. Hd. TT-Tap Scr. 1/4-20 x .5" Lg.		746-0634		Throttle Control Wire††
17	736-0173		Fl-Wash. .281" I.D. x .73" O.D.		746-0638		Throttle Control Wire (12 H.P. Tec.)
18	726-0233		Bolt Retainer 1/4" I.D.	44	777-9206		Grille Reflector Label
19	712-0185		Speed Nut 1/4-20 Thd.	45	710-0603		Hex Wash. Hd. B-Tap Scr. 5/16-18 x .5" Lg.
20	710-0118		Hex Bolt 5/16-18 x .75" Lg.	46	17782		Choke Retainer
21	17632A		Gas Tank Support Brkt.	47	710-0642		Hex TT-Tap Scr. 1/4-20 x .75" Lg.
22	731-1096B		Dash w/Ammeter Hole		See Chart		Muffler (Single Cylinder Engines)
	731-1337A		Dash w/o Ammeter Hole				
23	725-0267		Ignition Switch				
24	725-0201		Ignition Key				

\*\* Optional Parts

† Used w/Single Cylinder Engine Only.

†† Used w/Twin Cylinder Engine Only.

### †MUFFLER CHART

Engine	Muffler	Hardware & Related Parts
11.5, 12 & 12.5 H.P. B&S	751-0302	712-0250 Conduit L-Nut
12 & 12.5 H.P. Tecumseh	751-0443A	721-0208 Gasket 738-0636 Shoulder Bolts

# Style 1

Exploded view diagram of a vehicle headlight assembly, labeled "Style 1". The diagram illustrates the components and their assembly relationships, numbered as follows:

- 1**: Main headlight housing.
- 2**: Mounting bracket for the main housing.
- 3**: Mounting bracket for the lens assembly.
- 4**: Mounting bracket for the lens assembly.
- 5**: Mounting bracket for the lens assembly.
- 6**: Mounting bracket for the lens assembly.
- 7**: Mounting bracket for the lens assembly.
- 8**: Headlight lens.
- 9**: Mounting bracket for the lens assembly.
- 10**: Mounting bracket for the lens assembly.
- 11**: Mounting bracket for the lens assembly.
- 12**: Mounting bracket for the lens assembly.
- 13**: Mounting bracket for the lens assembly.
- 14**: Mounting bracket for the lens assembly.
- 15**: Mounting bracket for the lens assembly.
- 16**: Mounting bracket for the lens assembly.
- 17**: Mounting bracket for the lens assembly.
- 18**: Mounting bracket for the lens assembly.
- 19**: Mounting bracket for the lens assembly.
- 20**: Mounting bracket for the lens assembly.
- 21**: Mounting bracket for the lens assembly.
- 22**: Mounting bracket for the lens assembly.
- 23**: Mounting bracket for the lens assembly.
- 24**: Mounting bracket for the lens assembly.
- 25**: Mounting bracket for the lens assembly.
- 26**: Mounting bracket for the lens assembly.
- 27**: Mounting bracket for the lens assembly.
- 28**: Mounting bracket for the lens assembly.
- 29**: Mounting bracket for the lens assembly.
- 30**: Mounting bracket for the lens assembly.
- 31**: Mounting bracket for the lens assembly.
- 32**: Mounting bracket for the lens assembly.
- 33**: Mounting bracket for the lens assembly.
- 34**: Mounting bracket for the lens assembly.
- 35**: Mounting bracket for the lens assembly.
- 36**: Mounting bracket for the lens assembly.
- 37**: Mounting bracket for the lens assembly.
- 38**: Mounting bracket for the lens assembly.
- 39**: Mounting bracket for the lens assembly.
- 40**: Mounting bracket for the lens assembly.
- 41**: Mounting bracket for the lens assembly.
- 42**: Mounting bracket for the lens assembly.
- 43**: Mounting bracket for the lens assembly.
- 44**: Mounting bracket for the lens assembly.
- 45**: Mounting bracket for the lens assembly.
- 46**: Mounting bracket for the lens assembly.
- 47**: Mounting bracket for the lens assembly.
- 48**: Mounting bracket for the lens assembly.
- 49**: Mounting bracket for the lens assembly.
- 50**: Mounting bracket for the lens assembly.
- 51**: Mounting bracket for the lens assembly.
- 52**: Mounting bracket for the lens assembly.
- 53**: Mounting bracket for the lens assembly.
- 54**: Mounting bracket for the lens assembly.
- 55**: Mounting bracket for the lens assembly.
- 56**: Mounting bracket for the lens assembly.
- 57**: Mounting bracket for the lens assembly.
- 58**: Mounting bracket for the lens assembly.
- 59**: Mounting bracket for the lens assembly.
- 60**: Mounting bracket for the lens assembly.
- 61**: Mounting bracket for the lens assembly.
- 62**: Mounting bracket for the lens assembly.
- 63**: Mounting bracket for the lens assembly.
- 64**: Mounting bracket for the lens assembly.

# Style 1

## PARTS LIST FOR MODELS 661 AND 671 LAWN TRACTORS

REF. NO.	PART NO.	CODE	DESCRIPTION	REF. NO.	PART NO.	CODE	DESCRIPTION
1	17941		Hood	35	17871A		Fender w/Cutout
2	738-0724		Shld. Bolt .375" Dia. x .125" Lg.	38	710-0726		Hex Wash. Hd. AB-Tap Scr.
3	736-0342		FI-Wash. .28" I.D. x .75" O.D.				5/16 x .75" Lg.
4	710-0258		Hex Bolt 1/4-20 x .62" Lg.*	39	17954A		Shift Cover w/Cutout
5	736-0329		L-Wash. 1/4" I.D.*	40	17286A		Shift Cover
6	712-0287		Hex Nut 1/4-20 Thd.*	41	831-0823A		Throttle Box Ass'y.
7	749-0722B		Grille Support Rod	42	710-0779A		Truss Mach. AB-Tap Scr.
8	731-1099A		Headlight Lens				#10 x .5" Lg.
9	712-0380		Flange L-Nut 1/4-28 Thd.	43	746-0776	N	Throttle Control Wire 18.5" Lg.†
10	17931A		Grille		746-0634		Throttle Control Wire††
11	736-0119		L-Wash. 5/16" I.D.*		746-0638		Throttle Control Wire (12 H.P. Tec.)
12	712-0267		Hex Nut 5/16-18 Thd.*	45	710-0603		Hex Wash. Hd. B-Tap Scr.
13	725-0963		Lamp				5/16-18 x .5" Lg.
14	725-1651		Socket	46	17782		Choke Retainer
15	710-0703		Carriage Bolt 1/4-20 x .75" Lg.	47	710-0642		Hex TT-Tap Scr.
16	710-0599		Hex Wash. Hd. TT-Tap Scr.				1/4-20 x .75" Lg.
			1/4-20 x .5" Lg.	49	710-0351		Truss Mach. B-Tap Scr.
17	736-0173		FI-Wash. .281" I.D. x .73" O.D.				#10 x .5" Lg.
18	726-0233		Bolt Retainer 1/4" I.D.	50	736-0400		FI-Wash. .218" I.D. x .62"
19	712-0185		Speed Nut 1/4-20 Thd.	51	710-0924		Pan Hd. Mach. Scr. 1/4-20 x .75"
20	710-0118		Hex Bolt 5/16-18 x .75" Lg.*	52	710-0473		Truss Mach. Scr. #10-24 x
21	17632A		Gas Tank Support Brkt.				.5" Lg.
22	731-1096B		Dash w/Ammeter Hole	53	710-0589		Truss Mach. Scr. #10-24 x .75"
	731-1337A		Dash w/o Ammeter Hole	54	726-0130		Speed Nut
23	725-0267		Ignition Switch	57	712-0380		Lock Nut 1/4-28 Thd.
24	725-0201		Ignition Key	59	723-0302		Hood Stop
25	746-0616A		Choke Control 23" Lg.†	62	732-0714		Hood Spring
	746-3021		Choke Control††	64	712-0272		Hex Sems Nut #10-24 Thd.
	746-0720		Choke Control (Tec.)	65	736-0413		Spr. Wash. .39" I.D. x .62" O.D.
26	725-0634		Light Switch**	66	738-0724		Shld. Bolt
27	725-0925		Ammeter**	67	714-0104		Hairpin Clip 5/16" Dia.
31	736-3078		FI-Wash. .344" I.D. x 1" O.D.	—	See Chart		Muffler (Single Cylinder Engines)
32	710-0286		Truss Mach. Scr. 1/4-20 x .5" Lg.				
34	17870		Fender				

\*\* Optional Parts

† Used with Single Cylinder Engine Only.

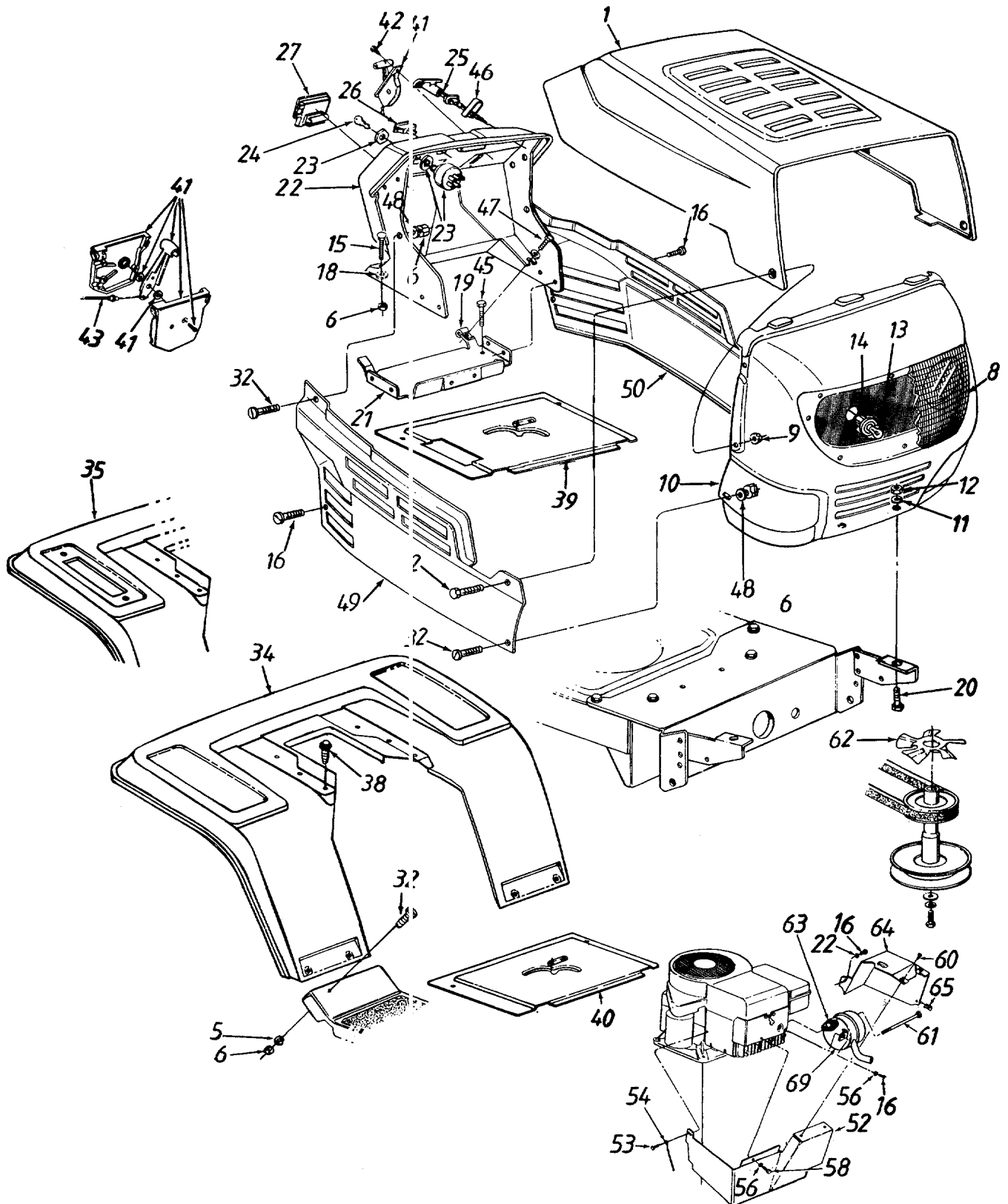
†† Used with Twin Cylinder Engine Only.

\*For faster service obtain standard nuts, bolts and washers locally.  
If these items cannot be obtained locally, order by part number and size as shown on parts list.

### †MUFFLER CHART

Engine	Muffler	Hardware & Related Parts
11.5, 12, & 12.5 H.P. B&S	751-0302	712-0250 Conduit L-Nut
12 & 12.5 H.P. Tecumseh	751-0443A	721-0208 Gasket 738-0636 Shoulder Bolts

# Style 3



# Style 3

## PARTS LIST FOR MODELS 663 AND 673 LAWN TRACTORS

REF. NO.	PART NO.	CODE	DESCRIPTION	REF. NO.	PART NO.	CODE	DESCRIPTION
1	783-0250		Hood	39	17954A		Shift Cover w/Cutout
2	738-0724		Shld. Bolt .375" Dia. x .125" Lg.	40	17286A		Shift Cover
6	712-0287		Hex Nut 1/4-20 Thd.*	41	831-0823A		Throttle Box Ass'y.
9	712-0380		Flange L-Nut 1/4-28 Thd.	42	710-0779A		Truss Mach. AB-Tap Scr. #10 x .5" Lg.
10	783-0156		Grille			N	Throttle Control Wire†
11	736-3078		Fl-Wash. .344" I.D. x 1" O.D.	43	746-0776		Throttle Control Wire††
12	712-0267		Hex Nut 5/16-18 Thd.*		746-0634		Hex Wash. Hd. B-Tap Scr. 5/16-18 x .5" Lg.
13	725-0963		Lamp	45	710-0603		Choke Retainer
14	725-1651		Socket				Hex TT-Tap Scr. 1/4-20 x .75" Lg.
15	710-0703		Carriage Bolt 1/4-20 x .75" Lg.	46	17782		Bell-Wash. .265" I.D. x .75" Lens
16	710-0599		Hex Wash. Hd. TT-Tap Scr. 1/4-20 x .5" Lg.	47	710-0642		Side Panel—L.H.
17	736-0173		Fl-Wash. .281" I.D. x .73" O.D.	48	736-0270		Side Panel—R.H.
18	726-0233		Bolt Retainer 1/4" I.D.	49	731-1503		Muffler Heat Shield—Front†
19	712-0185		Speed Nut 1/4-20 Thd.	50	783-0150A	N	Truss Mach. Scr. 5/16-18 x .75" Lg.†
20	710-0118		Hex Bolt 5/16-18 x .75" Lg.	51	783-0151		Ground Wire†
21	17632A		Gas Tank Support Brkt.	52	16936		Spr. Wash. 1/4" I.D.†
22	731-1096B		Dash w/Ammeter Hole	53	710-0323		Hex Bolt 1/4-20 x 3/8" Lg.†
	731-1337A		Dash w/o Ammeter Hole				Hex B-Tap Scr. #10 x .38" Lg.†
23	725-0267		Ignition Switch	54	725-0980		Shoulder Bolt†
24	725-0201		Ignition Key	56	736-0175		Cooling Fan†
25	746-0616A		Choke Control†	58	710-0294		Exhaust Gasket†
	746-0614A		Choke Control††	60	710-0429		Muffler Heat Shield—L.H.†
	746-3021		Choke Control (Vanguard & O.H.V.)	61	738-0636		Speed Nut #10-24 Thd.†
	746-0720		Choke Control (Tec.)	62	17199		Muffler†
26	725-0634		Light Switch	63	721-0208		L-Wash. 1/4" I.D.*
27	725-0925		Ammeter	64	683-0042A		Muffler (Single Cylinder Engines)
32	710-0286		Truss Mach. Scr. 1/4-20 x .5" Lg.	65	712-0147		
34	17870		Fender	69	751-0465		
35	17871A		Fender w/Cutout	70	736-0329		
38	710-0726		Hex Wash. Hd. AB-Tap Scr. 5/16 x .75" Lg.	—	See Chart		

\*\* Optional Parts

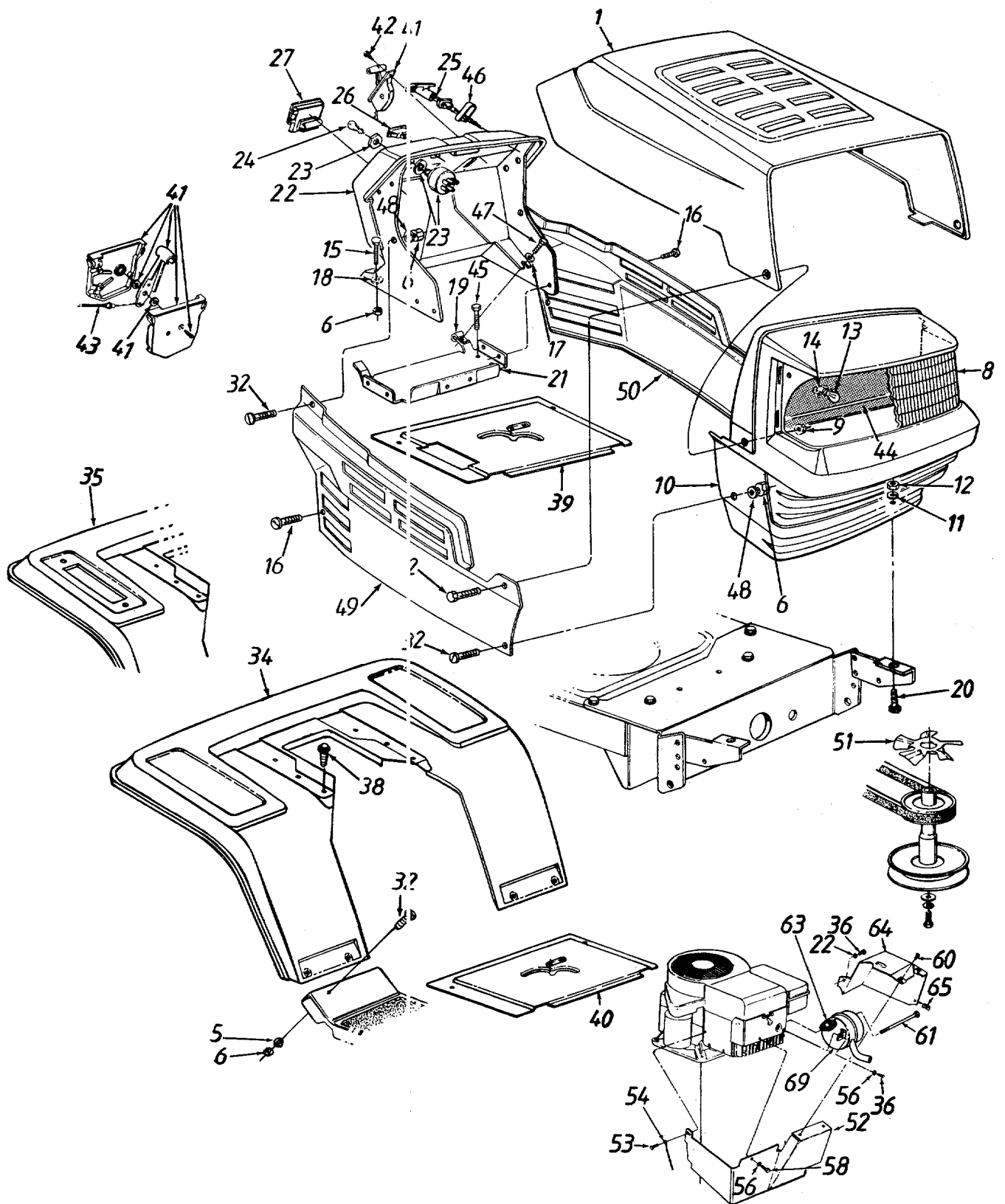
† Used w/Single Cylinder Engine Only.

†† Used w/Twin Cylinder Engine Only.

### †MUFFLER CHART

Engine	Muffler	Hardware & Related Parts
12 & 12.5 H.P. Tecumseh	751-0443A	721-0208 Gasket 738-0636 Shoulder Bolts

# Style 5





# Style 5

## PARTS LIST FOR MODELS 665 AND 675 LAWN TRACTORS

REF. NO.	PART NO.	CODE	DESCRIPTION	REF. NO.	PART NO.	CODE	DESCRIPTION
1	783-0250		Hood	38	710-0726		Hex Wash. Hd. AB-Tap Scr. 5/16 x .75" Lg.
2	738-0724		Shld. Bolt .375" Dia. x .125" Lg.	39	17954A		Shift Cover w/Cutout
3	736-0342		Fl-Wash. .28" I.D. x .75" O.D.	40	17286A		Shift Cover
6	712-0287		Hex Nut 1/4-20 Thd.*	41	831-0823A		Throttle Box Ass'y.
8	731-1099A		Headlight Lens	42	710-0779A		Truss Mach. AB-Tap Scr. #10 x .5" Lg.
9	712-0380		Flange L-Nut 1/4-28 Thd.	43	746-0776	N	Throttle Control Wire†
10	731-1097B		Grille		746-0634		Throttle Control Wire††
11	736-3078		Fl-Wash. .344" I.D. x 1" O.D.	44	777-9206		Grille Reflector Label
12	712-0267		Hex Nut 5/16-18 Thd.*	45	710-0603		Hex Wash. Hd. B-Tap Scr. 5/16-18 x .5" Lg.
13	725-0963		Lamp	46	17782		Choke Retainer
14	725-1649		Socket	47	710-0642		Hex TT-Tap Scr. 1/4-20 x .75" Lg.
15	710-0703		Carriage Bolt 1/4-20 x .75" Lg.	48	736-0270		Bell-Wash. 1/4" I.D.
16	710-0599		Hex Wash. Hd. TT-Tap Scr. 1/4-20 x .5" Lg.	49	783-0150A		Side Panel—R.H.
17	736-0173		Fl-Wash. .281" I.D. x .73" O.D.	50	783-0151		Side Panel—L.H.
18	726-0233		Bolt Retainer 1/4" I.D.	51	17199		Cooling Fan†
19	712-0185		Speed Nut 1/4-20 Thd.	52	16936		Muffler Heat Shield—Front†
20	710-0118		Hex Bolt 5/16-18 x .75" Lg.	53	710-0323		Truss Mach. Scr. 5/16-18 x .75" Lg.†
21	17632A		Gas Tank Support Brkt.	54	725-0980		Ground Wire†
22	731-1096B		Dash w/Ammeter Hole	56	736-0175		Spr. Wash. 1/4" I.D.†
	731-1337A		Dash w/o Ammeter Hole	58	710-0294		Hex Bolt 1/4-20 x 3/8" Lg.†
23	725-0267		Ignition Switch	60	710-0429		Hex B-Tap Scr. #10 x .38" Lg.†
24	725-0201		Ignition Key	61	738-0636		Shoulder Bolt†
25	746-0616A		Choke Control†	63	721-0208		Exhaust Gasket†
	746-0614A		Choke Control††	64	683-0042A		Muffler Heat Shield—L.H.†
	746-3021		Choke Control (Vanguard & O.H.V.)	65	712-0147		Speed Nut #10-24 Thd.†
	746-0720		Choke Control (Tec.)	69	751-0465		Muffler†
26	725-0634		Light Switch	70	736-0329		L-Wash. 1/4" I.D.*
27	725-0925		Ammeter		See Chart		Muffler (Single Cylinder Engines)
32	710-0286		Truss Mach. Scr. 1/4-20 x .5" Lg.				
34	17870		Fender				
35	17871A		Fender w/Cutout				

\*\* Optional Parts

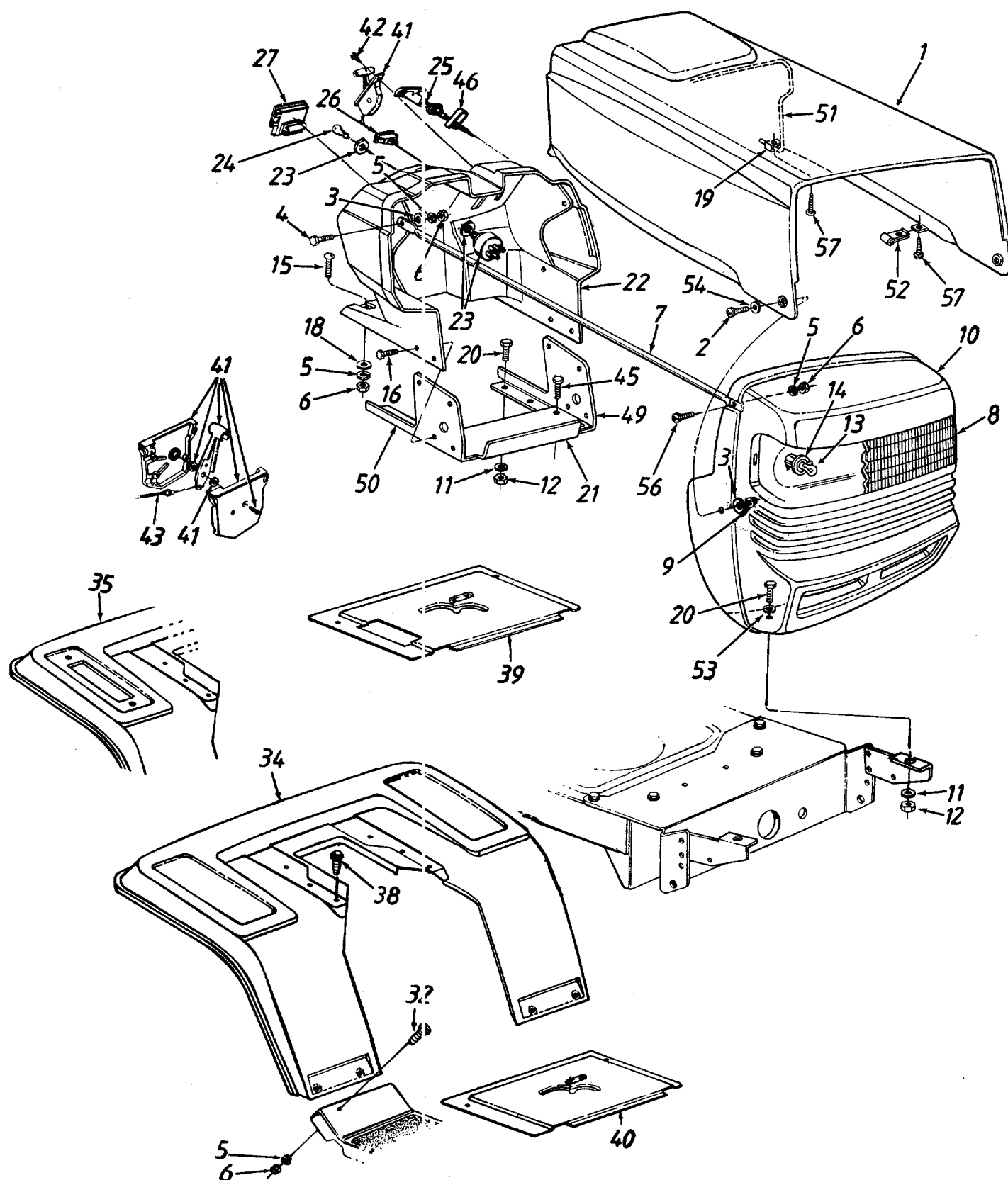
† Used w/Single Cylinder Engine Only.

†† Used w/Twin Cylinder Engine Only.

### †MUFFLER CHART

Engine	Muffler	Hardware & Related Parts
12 & 12.5 H.P. Tecumseh	751-0443A	721-0208 Gasket 738-0636 Shoulder Bolts

# Style 7



# Style 7

## PARTS LIST FOR MODELS 667 AND 677 LAWN TRACTORS

REF. NO.	PART NO.	CODE	DESCRIPTION	REF. NO.	PART NO.	CODE	DESCRIPTION
1	783-0020		Hood	27	725-0925		Ammeter
2	738-0724		Shld. Bolt .375" Dia. x .125" Lg.	32	710-0286		Truss Mach. Scr. 1/4-20 x .5" Lg.
3	736-0342		Fl-Wash. .28" I.D. x .75" O.D.	34	17870		Fender
4	710-0206		Hex Bolt 1/4-20 x .88" Lg.*	35	17871A		Fender w/Cutout
5	736-0329		L-Wash. 1/4" I.D.*	39	17954A		Shift Cover w/Cutout
6	712-0287		Hex Nut 1/4-20 Thd.*	40	17286A		Shift Cover
7	749-0916		Grille Support Rod	41	831-0823A		Throttle Box Ass'y.
8	731-1362		Headlight Lens	42	710-0779A		Truss Mach. AB-Tap Scr. #10 x .5" Lg.
9	712-0380		Flange L-Nut 1/4-28 Thd.			N	Throttle Control Wire†
10	783-0018		Grille	43	746-0776		Throttle Control Wire††
11	736-0119		L-Wash. 5/16" I.D.*		746-0634		Throttle Control Wire (12 H.P. Tec.)
12	712-0267		Hex Nut 5/16-18 Thd.*		746-0638		Throttle Control Wire (16 H.P. Tec.)
13	725-0963		Lamp		746-0637		Hex Wash. Hd. B-Tap Scr. 5/16-18 x .5" Lg.
14	725-1651		Socket				Choke Retainer
15	710-0703		Carriage Bolt 1/4-20 x .75" Lg.	45	710-0603		Dash Reinforcement Brkt.—L.H.
16	710-0599		Hex Wash. Hd. TT-Tap Scr. 1/4-20 x .5" Lg.				Dash Reinforcement Brkt.—R.H.
18	726-0233		Bolt Retainer 1/4" I.D.	46	17782		Hood Spring
19	726-0130		Speed Nut #10-24 Thd.	49	783-0035A		Flat Fastener (Special)
20	710-0118		Hex Bolt 5/16-18 x .75" Lg.	50	783-0036A		Fl-Wash. .344" I.D. x 1" O.D.
21	17633A		Gas Tank Support Brkt.	51	732-0714		Spr. Wash. .39" I.D. x .62" O.D.
22	731-1348		Dash	52	726-0326		Bell-Wash. .345" I.D. x .88" O.D.
23	725-0267		Ignition Switch	53	736-3078		Pan Hd. Scr. 1/4-20 x .75" Lg.
24	725-0201		Ignition Key	54	736-0413		Truss Mach. Scr. #10-24 x .5" Lg.
25	746-0616A		Choke Control†	55	736-0242		Muffler (Single Cylinder Engines)
	746-0614A		Choke Control††	56	710-0924		
	746-3021		Choke Control (Vanguard)	57	710-0351		
	746-3026		Choke Control (Tec.)		See Chart		
26	725-0634		Light Switch				

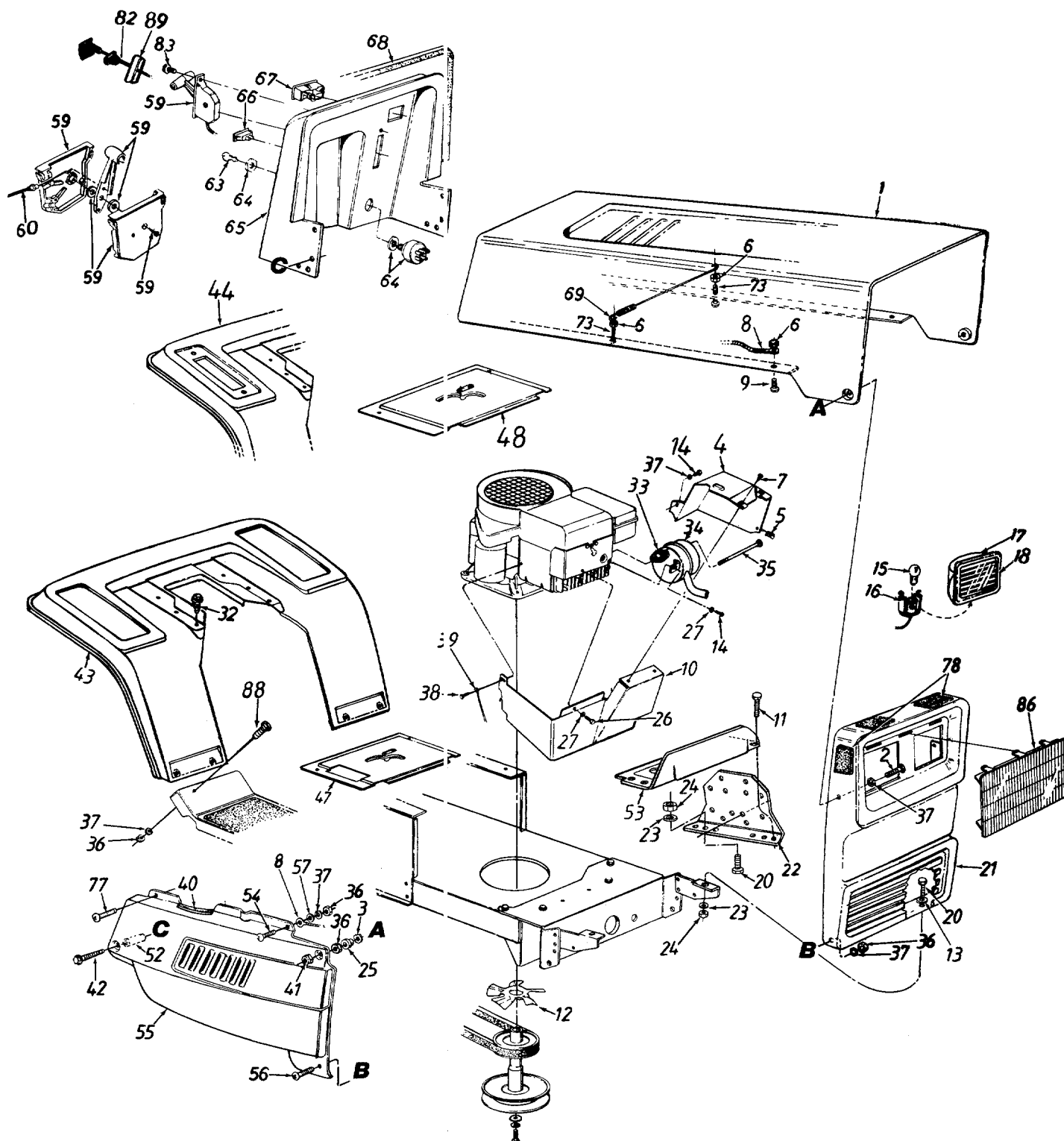
† Used w/Single Cylinder Engine Only.

†† Used w/Twin Cylinder Engine Only.

### †MUFFLER CHART

Engine	Muffler	Hardware & Related Parts
11.5, 12 & 12.5 H.P. B&S	751-0302	712-0250 Conduit L-Nut
12 & 12.5 H.P. Tecumseh	751-0443A	721-0208 Gasket 738-0636 Shoulder Bolts

## Style 8



# Style 8

## PARTS LIST FOR MODELS 668 AND 678 LAWN TRACTORS

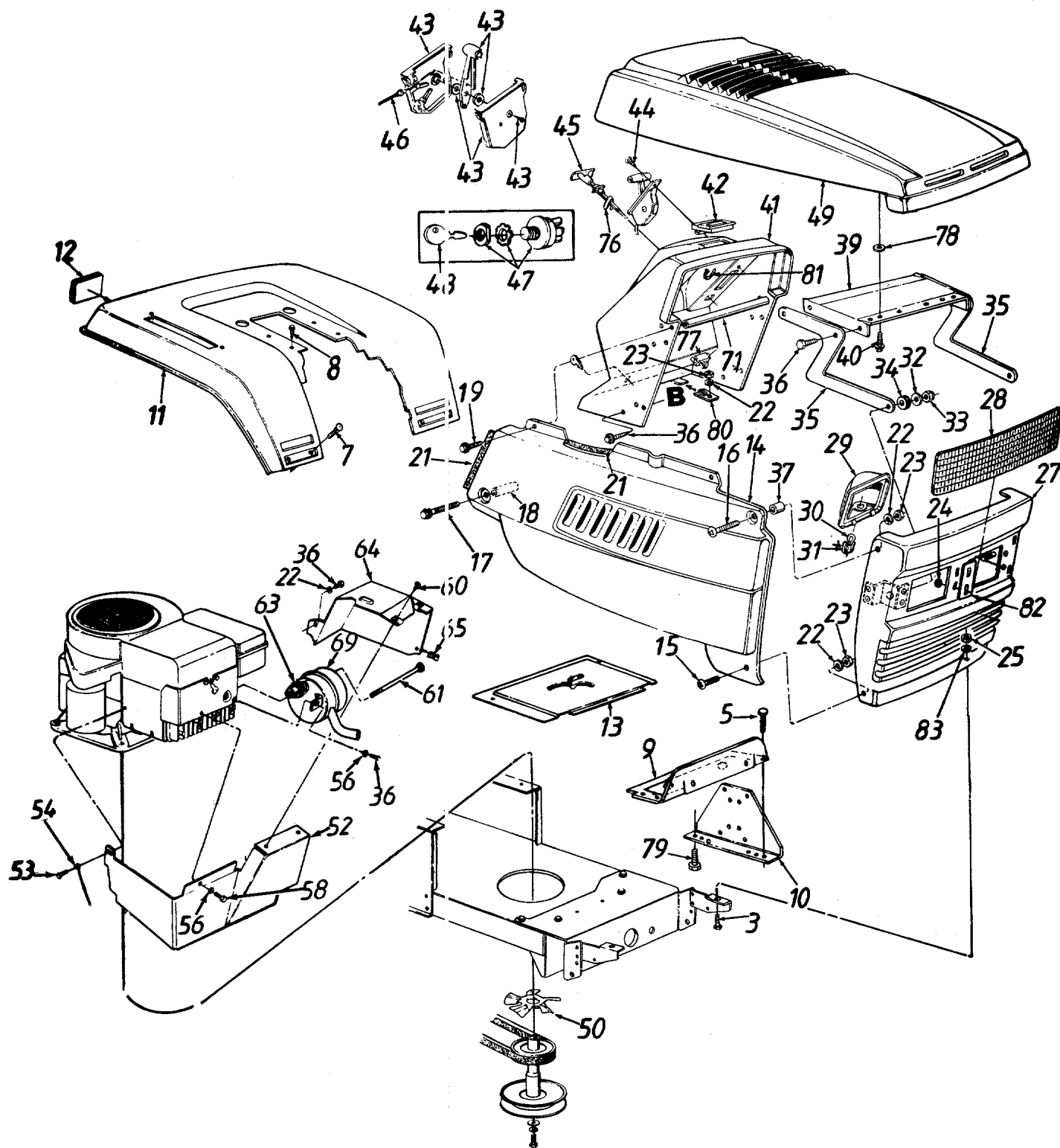
REF. NO.	PART NO.	CODE	DESCRIPTION	REF. NO.	PART NO.	CODE	DESCRIPTION
1	16787A		Hood	43	17870		Rear Fender
2	710-0206		Hex Bolt 1/4-20 x .88" Lg.	44	17871A		Rear Fender w/Cutout
3	736-0413		Washer .39" I.D. x .62"	47	17954A		Shift Cover w/Cutout
4	683-0042		Muffler Heat Shield—L.H.†	48	17286A		Shift Cover
5	712-0147		Speed Nut #10-24 Thd.†	52	750-0768		Spacer 1.32" Lg.
6	712-0272		Hex Sems Nut #10-24 Thd.*	53	17633A		Support Brkt.
7	710-0429		Hex B-Tap Scr. #10 x .38" Lg.†	54	710-0255		Truss Hd. Scr. 1/4-20 x .75"
8	727-0290		Hood Stop	55	17308A		Side Panel—R.H.†
9	710-0473		Truss Hd. Scr. #10-24 x 1/2"		16723		Side Cover—R.H. (Tec.)†
10	16936		Muffler Heat Shield—Front†		17458A		Side Cover w/Foam—R.H. (B&S)††
11	710-0603		Hex Wash. Hd. B-Tap Scr. 5/16-18 x .5" Lg.		17309A		Side Panel—L.H. (Not Shown)†
12	17199		Cooling Fan†		17459A		Side Cover w/Foam—L.H. (Not Shown)††
13	736-3078		Fl-Wash. .344" I.D. x 1" O.D.	56	710-0286		Truss Mach. Scr. 1/4-20 x .50" Lg.*
14	710-0599		Hex Tap Scr. 1/4-20 x .5" Lg.†	57	736-0173		Fl-Wash. .281" I.D. x .73" O.D.
15	725-0963		Bulb	59	831-0823A		Throttle Control Box Ass'y.
16	725-1650		Twist Lock—Bulb Socket	60	746-0776	N	Throttle Control Wire†
17	731-0705		Headlight Housing		746-0634		Throttle Control Wire††
18	731-0706		Lens	63	725-0201		Ignition Key
20	710-0118		Hex Bolt 5/16-18 x .75" Lg.*	64	725-0267		Ignition Switch
21	15806B		Grille	65	17295		Dash Panel
	16456B		Grille—Used w/Headlight Bezel	66	725-0634		Light Switch
22	17300D		Dash Support Bracket	67	725-0925		Ammeter
23	736-0119		L-Wash. 5/16" I.D.*	68	731-0511-31		Trim Strip—31"
24	712-0267		Hex Nut 5/16-18 Thd.*	69	732-0462		Hood Spring
25	738-0759		Shld. Spacer	73	710-0749		Hex Scr. #10-24 x 1.0" Lg.
26	710-0294		Hex Bolt 1/4-20 x 3/8" Lg.†	77	710-0642		Hex Wash. Hd. Tap Scr. 1/4 x .75" Lg.
27	736-0175		Spr. Wash. 1/4" I.D.†	78	722-0157		Foam Strip 3/8 x 1-1/8" x 1-1/2 Lg. (4 Req'd.)
33	721-0208		Exhaust Gasket†	82	746-0615A		Choke Control 29" Lg.†
34	751-0465		Muffler†		746-0613A		Choke Control 46" Lg.††
35	738-0636		Shoulder Bolt†	83	710-0779A		Truss Mach. AB-Tap Scr. #10 x .5" Lg.
36	712-0287		Hex Nut 1/4-20 Thd.*				Headlight Bezel**
37	736-0329		L-Wash. 1/4" I.D.*	86	731-0967		Truss Mach. Scr. 1/4-20 x .5" Lg.
38	710-0323		Truss Mach. Scr. 5/16-18 x .75" Lg.*†	88	710-0286		Retainer Clip
39	725-0980		Ground Wire 7.5"†	89	17782		
40	731-0511-12		Trim Strip—12"				
41	712-0264		Acorn Nut 1/4-20 Thd.				
42	710-1026		Hex TT-Tap Scr. 1/4-20 x 1.75" Lg.				

\*\*Optional Parts

†Used with Single Cylinder Engine Only.

††Used with Twin Cylinder Engine Only.

# Style 9



# Style 9

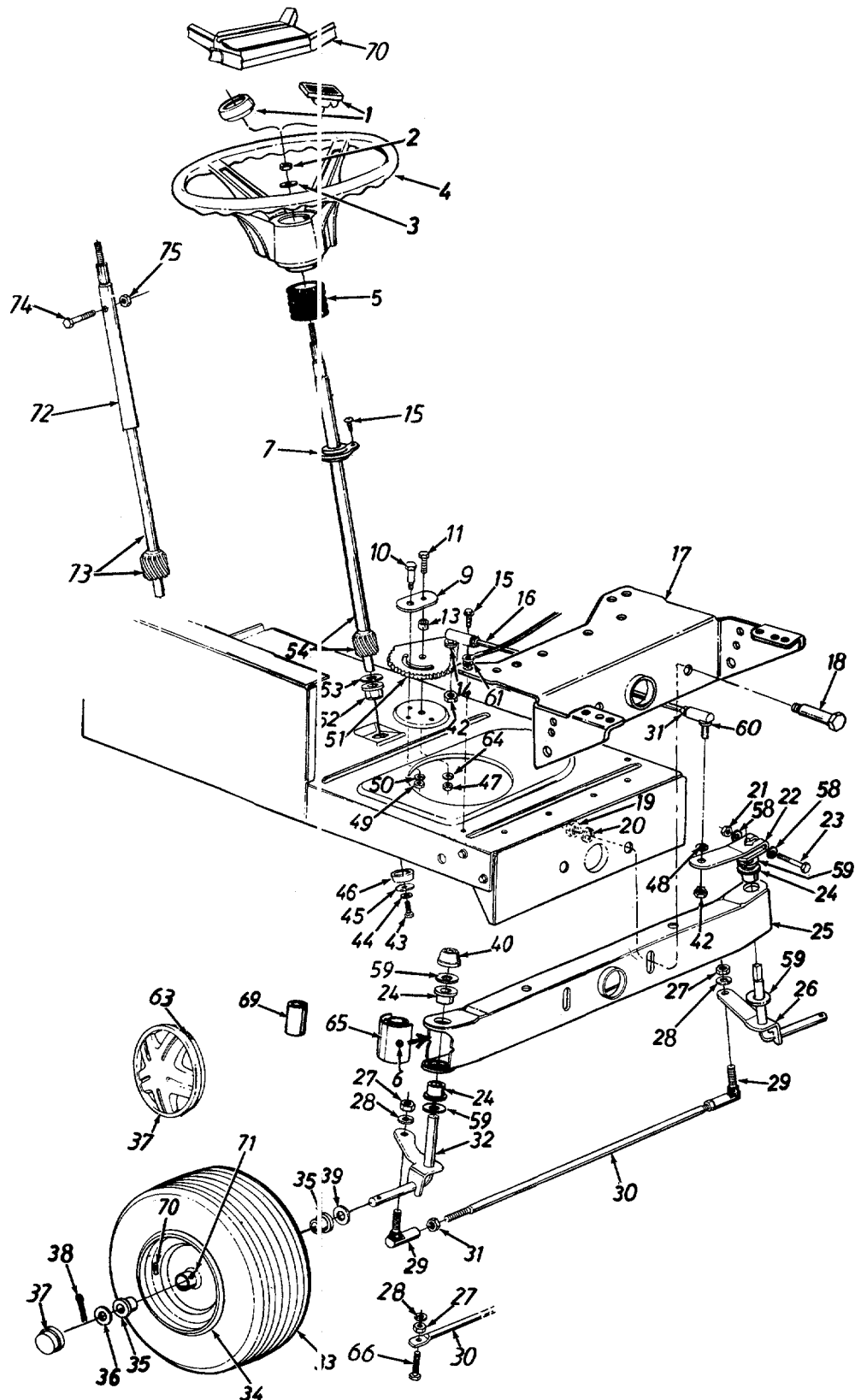
## PARTS LIST FOR MODELS 669 AND 679 LAWN TRACTORS

REF. NO.	PART NO.	CODE	DESCRIPTION	REF. NO.	PART NO.	CODE	DESCRIPTION
3	710-0118		Hex Bolt 5/16-18 x .75" Lg.	39	16903A		Hood Plate
5	710-0603		Hex Wash. Hd. Scr. 5/16" x .5" Lg.	40	710-1005		Hex Wash. Hd. Tap Scr. 1/4-20 x .5" Lg.
7	710-0167		Carriage Bolt 1/4-20 x .5" Lg.	41	731-1048B		Dash
8	710-0726		Hex Wash. Hd. Tap Scr. 5/16 x .75" Lg.	42	725-0925		Ammeter
9	17633A		Support Bracket	43	831-0823A		Throttle Control Box Ass'y.
10	17300D		Dash Support Bracket	44	710-0919		Mach. Scr. #10 x .44" Lg.
11	17324B		Rear Fender	45	746-0616A		Choke Control 23" Lg.†
12	730-3000		Reflector (Optional)		746-0614A		Choke Control 38" Lg.††
13	17286A		Transmission Cover	46	746-0776		Throttle Control Wire 18.5" Lg.†
14	17308A		Side Panel—R.H.†		746-0634		Throttle Control Wire 35" Lg.††
	17309A		Side Panel—L.H. (Not Shown)†		746-0638		Throttle Control Wire 22" Lg. (16 H.P. Tec.)
	16723		Side Panel—R.H. (16 H.P. Tec.)	47	725-0267		Ignition Switch
	17458A		Side Panel w/Foam—R.H.††	48	725-0201		Ignition Key
	17459A		Side Panel Ass'y. w/Foam—L.H. (Not Shown)††	49	731-1491		Hood—Red
15	710-0286		Truss Mach. Scr. 1/4-20 x .5" Lg.		731-1492		Hood—Midnight Blue
16	710-0166		Truss Mach. Scr. 1/4-20 x 1.0" Lg.		731-1497		Hood—Oyster Gray
17	710-1026		Hex Wash. TT-Tap Scr. 1/4-20 x 1.75" Lg.		731-1531		Hood—Charcoal Gray
18	750-0768		Spacer .26" I.D. x 1.32"		731-1532		Hood—Orange
19	710-0642		Hex Rolling Tap Scr. 1/4-20 x .75" Lg.	50	17199		Cooling Fan†
21	731-0511-18		Trim Strip—18" Lg.	52	16936		Muffler Heat Shield—Front†
22	736-0329		L-Wash. 1/4" I.D.*	53	710-0323		Truss Mach. Scr. 5/16-18 x .75" Lg.†
23	712-0287		Hex Nut 1/4-20 Thd.*	54	725-0980		Ground Wire†
24	726-0201		Speed Nut 5/16" Thd.	56	736-0175		Spr. Wash. 1/4" I.D.†
25	712-0267		Hex Nut 5/16-18 Thd.*	58	710-0294		Hex Bolt 1/4-20 x 3/8" Lg.*†
26	736-3078		FI-Wash. .344" I.D. x 1" O.D.	60	710-0429		Hex B-Tap Scr. #10 x .38" Lg.†
27	17410		Grille Ass'y.	61	738-0636		Shoulder Bolt†
28	731-1044		Headlight Lens	63	721-0208		Exhaust Gasket†
29	731-0705		Headlamp Housing	64	683-0042		Muffler Heat Shield—L.H.†
30	725-0963		Headlamp	65	712-0147		Speed Nut #10-24 Thd.†
31	725-1650		Twist Lock Lamp Socket	69	751-0465		Muffler†
32	736-0242		Bell-Wash. .345" I.D. x .88"	71	749-0814		Grille Support Tube
33	712-0429		Hex L-Nut 5/16-18 Thd.	73	736-0607		External L-Wash. 5/16" I.D.
34	735-0126		Rubber Washer	76	17782		Choke Retainer
35	783-0190		Hood Hinge	77	725-0634		Light Switch
36	710-0599		Hex Wash. Hd. B-Tap Scr. 1/4-20 x .5" Lg.	78	736-3010		FI-Wash. .406" I.D. x .812" O.D.
37	750-0218		Spacer .262" I.D. x .31"	79	710-0258		Hex Bolt 1/4-20 x .62" Lg.
				80	783-0013		Dash Fastening Tab
				81	725-0157		Cable Tie
				82	777-8568A		Chrome Label

† Used with Single Cylinder Engine Only.

†† Used with Twin Cylinder Engine Only.

# Models 660 thru 679





# Models 660 thru 679

## PARTS LIST FOR MODELS 660 THRU 679 LAWN TRACTORS

REF. NO.	PART NO.	CODE	DESCRIPTION	REF. NO.	PART NO.	CODE	DESCRIPTION
1	731-0220		Steering Wheel Cap	33	**		Wheel Ass'y. Comp.
	731-1459		Steering Wheel Cap (Sq.—MTD)	34	**		Front Wheel Rim Only
	731-1460		Steering Wheel Cap (Square—No Logo)	35	**		Bearing
2	712-0411		Hex L-Nut 5/16-24 Thd.	36	736-0285		FI-Wash. .635 I.D. x 1.59" O.D.
3	736-0242		Belleville Wash. .345" I.D.	37	731-0484A		Front Wheel Hub Cap
4	731-0805		Steering Wheel (3 Spoke)†		731-1787		Spoked Hub Cap (Yellow—Opt.)
	731-1406		Steering Wheel (3 Spoke)††		734-1613		Spoked Hub Cap (Gray—Opt.)
	731-0806A		Steering Wheel (4 Spoke)†		734-1612		Spoked Hub Cap (Beige—Opt.)
	631-0027	N	Steering Wheel (Style 9 w/46" Deck)†	38	714-0470		Cotter Pin 1/8" Dia. x 1.25"
5	731-0559		Steering Bellow—4.5" (Style 8)	39	736-0187		FI-Wash. .640" I.D. x 1.24" O.D.
	731-0954		Steering Bellow—9" (Style 0, 1, 3, 4, 5, 6, 9)	40	726-0214		Push Cap 5/8" Dia. Rod
	731-1542		Steering Bellow—3.25" (Style 7)	42	712-0446		Hex Jam Nut 3/8-24 Thd.
6	737-0280		Grease Fitting (Optional)	43	710-0538		Hex L-Bolt 5/16-18 x .62"
7	741-0587		Flange Bearing .628" I.D. x 1.36 O.D. (Style 8)	44	736-0119		L-Wash. 5/16" I.D.*
9	17198A		Retainer Plate	45	736-0343		FI-Wash. .33" I.D. x 1.25" O.D.
10	738-0141		Shoulder Bolt .437" Dia. x .35 Lg. 5/16-18 Thd.	46	750-0532		Spacer (Plastic)
11	710-0152		Hex Bolt 3/8-24 x 1.0" Lg. (Gr. 5)	47	712-0214		Hex Cent. L-Nut 3/8-24 Thd.
13	750-0535		Spacer .380" I.D. x .625" O.D. x .227	48	736-0169		L-Wash. 3/8" I.D.*
14	736-0217		L-Wash. 3/8" I.D. (H.D.)	49	712-0158		Hex Cent. L-Nut 5/16-18 Thd.
15	710-0726		Hex Wash. Hd. Self-Tap Scr.	50	736-0119		L-Wash. 5/16" I.D.*
16	711-1001		Steering Drag Link	51	717-0622A		Steering Gear Segment
17	783-0041		Front Pivot Brkt.	52	741-0225		Hex Flg. Brg. .634 I.D.
18	738-0527		Shoulder Bolt .498" Dia. x 2.04 Lg. 3/8-16 Thd.	53	736-0187		FI-Wash. (Hardened)
19	712-0431		Flanged L- Nut 3/8-16 Thd.*	54	738-0743		Steering Shaft
20	736-0169		L-Wash. 3/8" I.D.*		738-0912	N	Steering Shaft (Style 9 w/46" Deck)
21	712-0411		Hex L-Nut 5/16-24 Thd.	57	710-0837		Oval Hd. Cr.—Sunk Scr. #10 x 5/8" Lg. (Style 8)
22	16481A		Steering Arm Front Axle	58	736-0271		Wave-Wash. .32" I.D. x .62" O.D.
23	710-0772		Hex Bolt 5/16-24 x 2.00" Lg. (Gr.5)	59	736-0187		FI-Wash. (Hardened)
24	741-0487A		Hex Flg. Brg. .632 I.D.	60	723-3018		Drag Link Ball Joint 3/8-24 Thd.
25	683-0002		Pivot Bar Ass'y.	61	736-0607		Ext. L-Wash. 5/16" I.D.
26	**		Front Axle Ass'y.—L.H.	63	727-0425A		Spring Clip (Used w/Spoked Hub Cap)
27	712-0241		Hex Nut 3/8-24 Thd.*	64	736-0356		Bell-Wash. .39" I.D. x 1.38" O.D.
28	736-0169		L-Wash. 3/8" I.D.*	65	731-1291		Pivot Bar End Cap (Optional)
29	723-3018		Ball Joint 3/8-24 Thd.	66	710-0459		Hex Bolt 3/8-24 x 1.5" Lg. (Gr. 5)
30	747-0753		Tie Rod (Adjustable)	69	731-1389		Plastic Tube 1.54" Lg.
	747-0861		Tie Rod (Non-Adjustable)	70	731-0955		Steering Wheel Insert (Optional)
31	712-0711		Hex Jam Nut 3/8-24 Thd.*	72	738-0886		Upper Steering Shaft (Used w/46" Deck)
32	**		Front Axle Ass'y.—R.H.	73	650-0001		Lower Steering Shaft (Used w/46" Deck)
				74	710-0958		Hex Bolt 1/4-20 x 1.25" Lg.
				75	712-0324		Hex L-Nut 1/4-20 Thd.

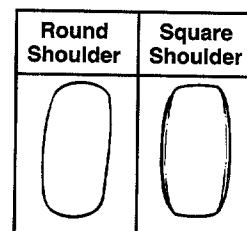
† Uses Round Steering Wheel Cap

†† Uses Square Steering Wheel Cap

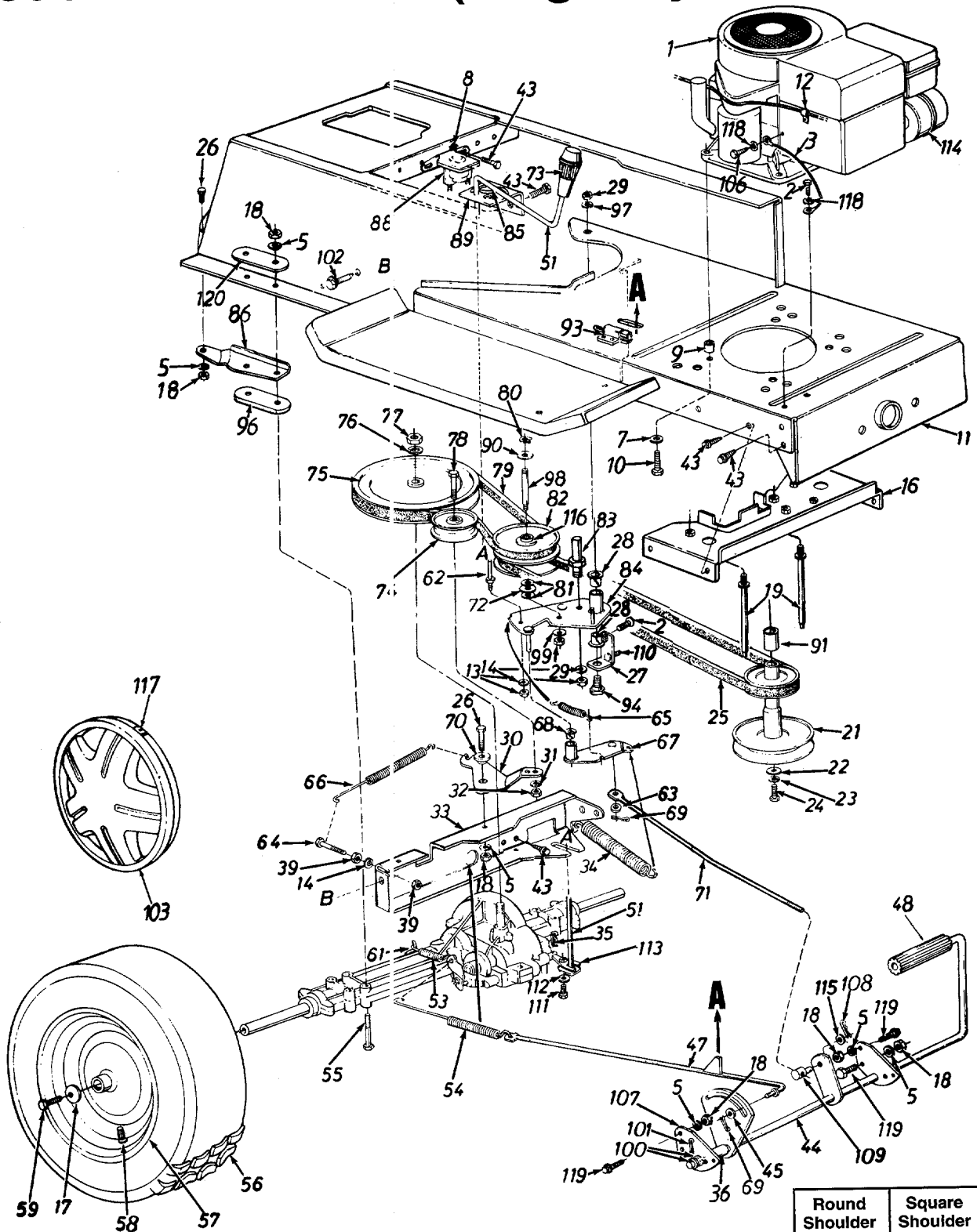
\*For faster service obtain standard nuts, bolts and washers locally. If these items cannot be obtained locally, order by part number and size as shown on parts list.

### \*\*FRONT WHEEL CHART

Description	15" x 6"	15" x 6"
Wheel Ass'y. Comp.	634-0056	634-0105
Tire Only	734-0864	734-1731
Rim Only	634-0024	634-0024
Bearing	741-0487A	741-0487A
Air Valve	734-0255	734-0255
Grease Fitting (Optional)	737-0211	737-0211
Grease Plug	737-0212	737-0212
Front Axle Ass'y.—L.H.	17585A	17585A
Front Axle Ass'y.—R.H.	17584A	17584A
Front Axle Ass'y.—L.H. (46" Deck)	683-0041	683-0041
Front Axle Ass'y.—R.H. (46" Deck)	683-0040	683-0040

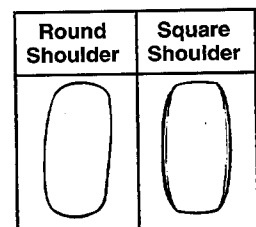


# Models 660 thru 679 (Single Cylinder)



**\*\*REAR WHEEL CHART**

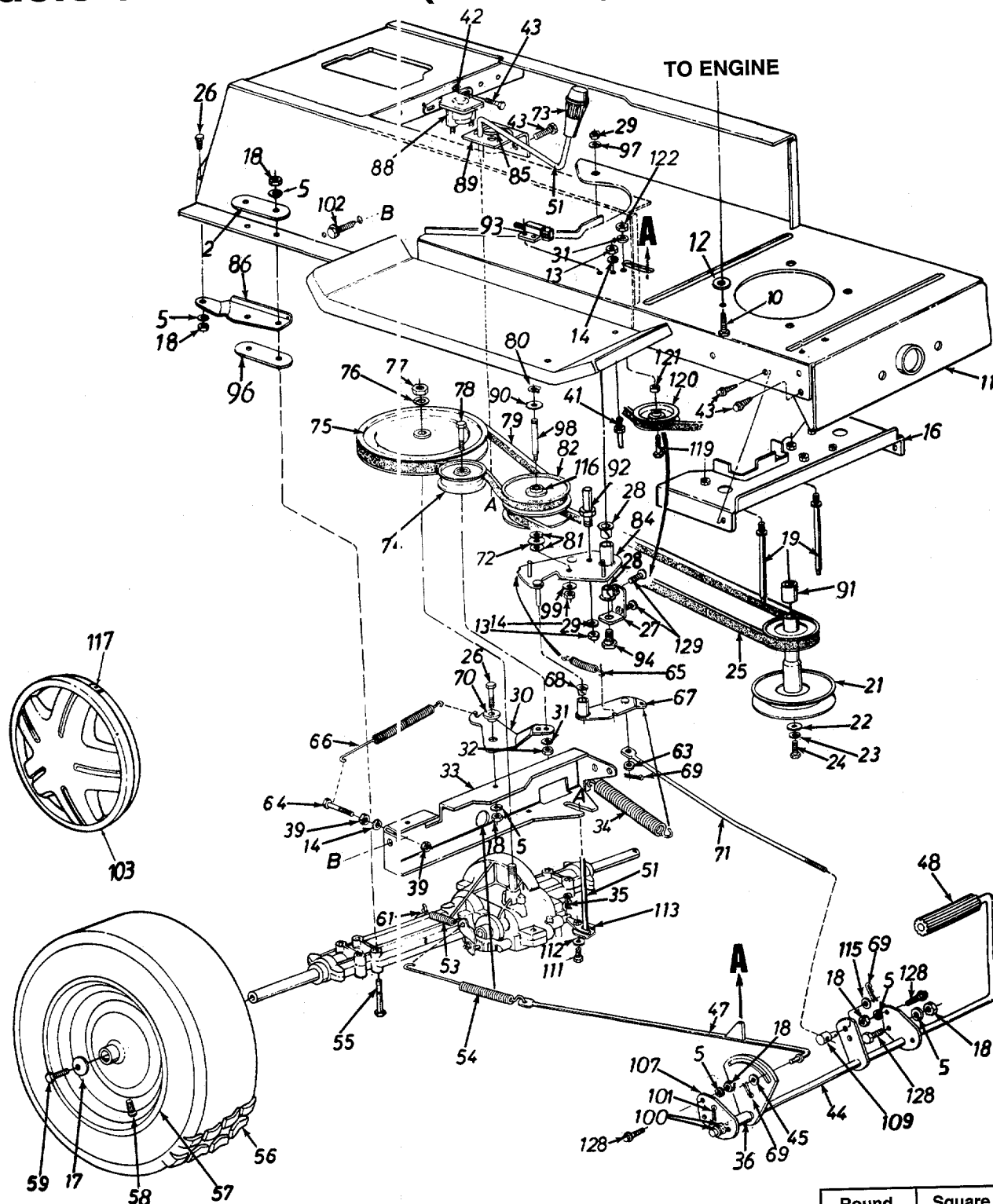
Description	18" x 9.50"	18" x 6.50"	20" x 8.0"	20" x 8.0"
Wheel Ass'y. Comp.	734-0817	734-0592	734-1675	634-0104
Tire Only	734-0448	734-0294	734-1596	734-1730
Rim Only	634-0070	634-0069	634-0070	634-0070



# PARTS LIST FOR MODELS 660 THRU 679 LAWN TRACTORS

REF. NO.	PART NO.	CODE	DESCRIPTION	REF. NO.	PART NO.	CODE	DESCRIPTION
1	—		Engine	67	16554A		Variable Speed Torque Brkt. Ass'y.
2	710-0726		Hex Wash. AB-Tap Scr. 5/16" x .75"		16352A		Variable Speed Torque Brkt. Ass'y. (30" Deck Only)
3	725-0980		Electric Ground Wire	68	741-0419		Flanged Bearing
5	736-0119		L-Wash. 5/16" I.D.*	69	714-0111		Cotter Pin 3/32" Dia.*
7	736-0247		FI-Wash. .406" I.D. x 1.25"	70	748-0234		Shoulder Spacer .27" Lg.
9	750-0965		Spacer	71	747-0530A		Speed Control Link
8	736-0222		Ext. L-Wash. 1/4" I.D.	72	741-0405		Truss Bearing .56 Dia. x 1.25"
10	710-1007		Hex Tap Scr. 3/8-16 x 1.5" Lg.	73	720-0232		Shift Knob
11	683-0065		Lower Frame Ass'y.	74	756-0437		FI-Idler Pulley 3.25" x .75"
12	726-0235		Speed Clip	75	656-0005		"V"-Pulley (Used w/18" Wheels or 46" Deck)
13	712-0287		Hex Nut 1/4-20 Thd.*		656-0004		"V"-Pulley (Used w/20" Wheels w/o 46" Deck)
14	736-0329		L-Wash. 1/4" I.D.*	76	736-0427		Bell-Wash. .56" I.D. x 1.125"
16	17893A		Belt Guard Brkt. Ass'y.	77	712-3035		Hex Jam Nut 9/16-18 Thd.
17	736-0242		Bell-Wash. .345" I.D. x .88"	78	710-0539		Hex Bolt 3/8-24 x 1.75" Lg.
18	712-0267		Hex Nut 5/16-18 Thd.*	79	754-0370		Variable Speed Belt
19	711-0986		Belt Guard Stud 3.6" Lg.	80	716-0114		Snap Ring .56" Dia.
21	756-0982		Engine Pulley	81	736-0355		FI-Wash.
22	736-0322		FI-Wash. 7/16" I.D. x 1.25"	82	717-0800A		Variable Speed Pulley Ass'y. 5" O.D.
23	736-0171		L-Wash. 7/16" I.D.*		711-1000		Belt Keeper 3" Lg.
24	710-0757		Hex Bolt 7/16-20 x 1.50" Lg.	83	16354B		Variable Speed Brkt. Ass'y.
25	754-0280		Variable-Speed Belt	84	732-0525		Comp. Spring—Clip
26	710-0118		Hex Bolt 5/16-18 x .75" Lg.	85	17668		Axle Support Brkt.—R.H.
27	17963		Bearing Shaft Bracket Ass'y.	86	17669		Axle Support Brkt.—L.H. (Not Shown)
28	741-0591		Flanged Nyliner Brg. .63" I.D. x .6" Lg.		725-1426		Solenoid
29	712-0241		Hex Nut 3/8-24 Thd.*	88	17630		Shift Lever Bracket
30	17643		Idler Bracket (Used w/20" Wheels w/o 46" Deck)	89	736-0414		Teflon Washer .565" I.D.
	17694		Idler Bracket (Used w/18" Wheels or 46" Deck)	90	750-0957		Spacer 1" I.D. x 1.25" Lg.
31	736-0169		L-Wash. 3/8" I.D.*	91	725-1657		Safety Switch (Clutch)
32	712-0241		Hex Nut 3/8-24 Thd.*	93	738-0755		Shld. Bolt 3/8-24 x 3.12" Lg.
33	17629A		Transaxle Support Brkt.	94	748-0334		Transaxle Spacer (Used w/18" Wheels or 46" Deck)
34	732-0556		Ext. Spring .94" O.D. x 7.58"	96			Bell-Wash. .38" I.D. x .88"
35	714-0149B		Inter. Cott-Pin	97	736-0105		Shaft .56" Dia. x 3.875" Lg.
36	750-0802		Spacer .63" I.D.	98	738-0569		Bell-Wash. .39" I.D. x 1.12"
39	712-0138		Hex Nut 1/4-28 Thd.	99	736-0331		FI-Wash. .64" I.D. x .94"
43	710-0599		Hex Wash. Hd. S-Tap Scr. 1/4-20 x .50" Lg.	100	736-0256		Cotter Pin 1/8" Dia. x 1.25"
44	17715B		Clutch/Brake Pedal Ass'y.	101	714-0470		Hex Wash. Hd. Scr. 5/16-18 x .62" Lg.
45	736-0264		FI-Wash. .344" I.D. x .62"	102	710-0604		Hub Cap (Gray—Optional)
47	17686A		Brake Rod Ass'y.	103	734-1615		Hub Cap (Beige—Optional)
48	735-0196		Foot Pad		734-1614		Hub Cap (Yellow—Optional)
51	17705		Shift Lever Ass'y.	106	710-0323		Pan Hd. Mach. Scr. 5/16-18 x .75" Lg.
53	732-0264		Ext. Spring .38" O.D. x 2.5"	107	17860		Pedal Bracket
54	732-0413		Ext. Spring 7.08" (Used w/20" Wheels w/o 46" Deck)	108	714-0470		Cotter Pin 1/8" Dia. x 1.25"
	732-0642		Ext. Spring 7.33" (Used w/18" Wheels or 46" Deck)	109	711-0198		Ferrule
55	710-1068		Hex Bolt 5/16-18 x 3.5" Lg. (Used w/18" Wheels or 46" Deck)	110	710-0376		Hex Bolt 5/16-18 x 1.0" Lg.—(Gr. 5)
	710-0189		Hex Bolt 5/16-18 x 3" Lg. (Used w/20" Wheels w/o 46" Deck)	111	710-0195		Hex Bolt 1/4-28 x .50" Lg.
56	**		Wheel Ass'y. Comp.	112	736-0270		Bell-Wash. .265" I.D. x .75"
57	**		Wheel Rim Only	113	17707		Shift Lever Link Ass'y.
58	734-0255		Air Valve (Service Only)	114	—		Muffler (Refer to Style Sheet)
59	710-0627		Hex Bolt 5/16-24 x .75" Lg.*	115	736-0140		FI-Wash. .385" I.D. x .62"
61	732-0722		Brake Return Spring Anchor	116	741-0404		Needle Brgs. (2 Req'd.)
62	711-0768		Belt Guard Pin 1/4-20 Thd.	117	727-0425A		Spring Clip (Used w/Ref. #103)
63	736-0275		FI-Wash. .34" I.D. x .68" O.D.	118	736-0607		External L-Wash. 5/16" I.D.
64	710-0428		Hex Bolt 1/4-28 x 1.25" Lg.*	119	710-0650		Hex TT-Tap Scr. 5/16-18 x .75"
65	732-0568		Ext. Spring	120	17840		Transaxle Mtg. Brkt.
66	732-0384		Ext. Spring .62" O.D. x 6.12"				

# Models 660 thru 679 (Twin Cylinder and O.H.V.)



**\*\*REAR WHEEL CHART**

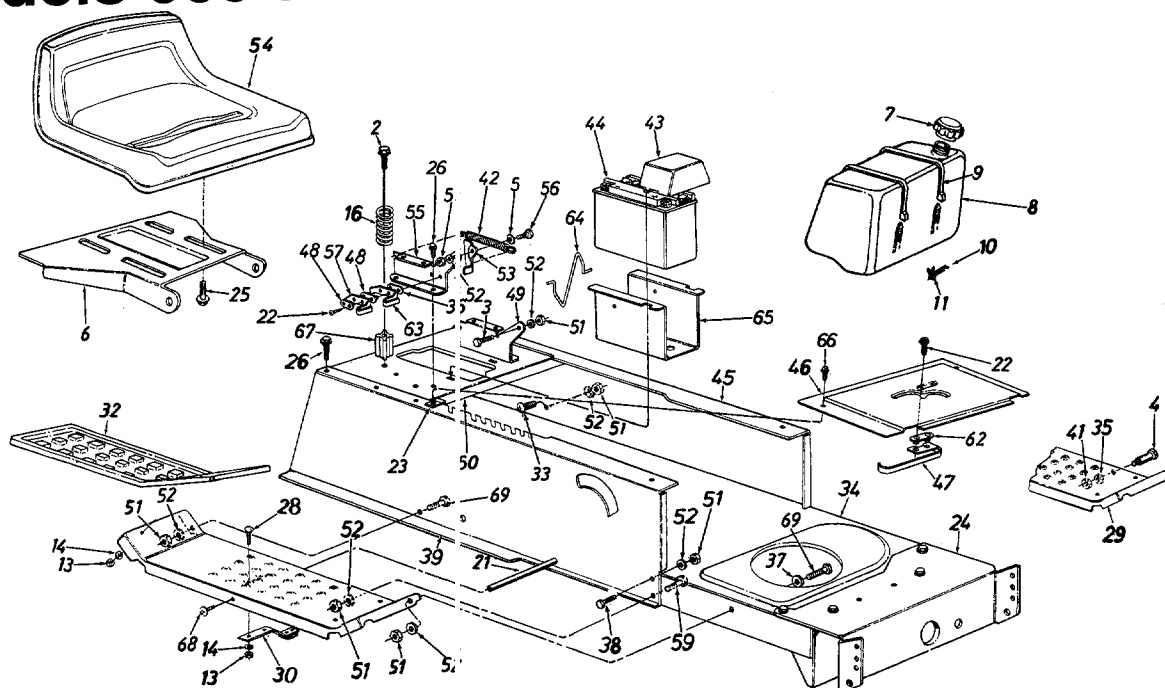
Description	18" x 9.50"	18" x 6.50"	20" x 8.0"	20" x 8.0"
Wheel Ass'y. Comp.	734-0817	734-0592	734-1675	634-0104
Tire Only	734-0448	734-0294	734-1596	734-1730
Rim Only	634-0070	634-0069	634-0070	634-0070

Round Shoulder	Square Shoulder

# PARTS LIST FOR MODELS 660 thru 679 LAWN TRACTORS

REF. NO.	PART NO.	CODE	DESCRIPTION	REF. NO.	PART NO.	CODE	DESCRIPTION
2	17840		Transaxle Mtg. Brkt.	65	732-0568		Ext. Spring
5	736-0119		L-Wash. 5/16" I.D.*	66	732-0384		Ext. Spring .62" O.D. x 6.12"
10	710-0502A		Hex L-Wash. Tap Scr. 3/8-16 x 1.5" Lg. (Twin Cylinder)	67	16554A		Variable Speed Torque Brkt. Ass'y.
	710-1007		Hex L-Wash. TT-Tap Scr. 3/8-16 x 1.5" Lg. (O.H.V.)	68	741-0419		Flanged Bearing
	710-1035		Hex Wash Hd. AB-Tap Scr. 3/8-16 Thd. (B&S Vanguard)	69	714-0111		Cotter Pin 3/32" Dia.*
11	683-0065		Lower Frame Ass'y.	70	748-0234		Shoulder Spacer .27" Lg.
13	712-0287		Hex Nut 1/4-20 Thd.*	71	747-0530A		Speed Control Link
14	736-0329		L-Wash. 1/4" I.D.*	72	741-0405		Truss Bearing .56 Dia. x 1.25"
16	17358D		Belt Guard Brkt. Ass'y.	73	720-0232		Shift Knob
17	736-0242		Bell-Wash. .345" I.D. x .88"	74	756-0437		FI-Idler Pulley 3.25" x .75"
18	712-0267		Hex Nut 5/16-18 Thd.*	75	656-0005		"V" Pulley (Used w/18" Wheels or 46" Deck)
19	711-0986		Belt Guard Stud 3.6" Lg.		656-0004		"V" Pulley (Used w/20" Wheels w/o 46" Deck)
21	756-0982		Engine Pulley	76	736-0427		Bell-Wash. .56" I.D. x 1.125"
22	736-0322		FI-Wash. 7/16" I.D. x 1.25"	77	712-3035		Hex Jam Nut 5/16-18 Thd.
23	736-0171		L-Wash. 7/16" I.D.*	78	710-0539		Hex Bolt 3/8-24 x 1.75" Lg.
24	710-0757		Hex Bolt 7/16-20 x 1.50" Lg.	79	754-0370		Variable Speed Belt
25	754-0280		Variable-Speed Belt	80	716-0114		Snap Ring .56" Dia.
26	710-0118		Hex Bolt 5/16-18 x .75" Lg.	81	736-0355		FI-Wash.
27	17963		Bearing Shaft Bracket Ass'y.	82	717-0800A		Variable Speed Pulley Ass'y. 5" O.D.
28	741-0591		Flanged Nyliner Brg. 5/8" I.D. x .88" Lg.	84	16354B		Variable Speed Brkt. Ass'y.
29	712-0241		Hex Nut 3/8-24 Thd.*	85	732-0525		Comp. Spring—Clip
30	17643		Idler Bracket (Used w/20" Wheels w/o 46" Deck)	86	17668		Axle Support Brkt.—R.H.
	17694		Idler Bracket (Used w/18" Wheels or 46" Deck)		17669		Axle Support Brkt.—L.H. (Not Shown)
31	736-0169		L-Wash. 3/8" I.D.*	88	725-1426		Solenoid
32	712-0241		Hex Nut 3/8-24 Thd.*	89	17630		Shift Lever Bracket
33	17629A		Transaxle Support Brkt.	90	736-0414		Teflon Washer .565" I.D.
34	732-0556		Ext. Spring .94" O.D. x 7.58"	91	750-0957		Spacer 1" I.D. x 1.25" Lg.
35	714-0149B		Inter. Cotter Pin	92	711-1000		Belt Keeper 3" Lg.
36	750-0802		Spacer .63" I.D.	93	725-1657		Safety Switch (Clutch)
39	712-0138		Hex Nut 1/4-28 Thd.	94	738-0755		Shld. Bolt 3/8-24 x 3.12" Lg.
40	710-0776		Hex AB-Tap Scr. 1/4" x .62" Lg.	96	748-0334		Transaxle Spacer (Used w/18" Wheels)
41	711-0747		Belt Guard Pin	97	736-0105		Bell-Wash. .38" I.D. x .88"
42	736-0222		Ext. L-Wash. 1/4" I.D.	98	738-0569		Shaft .56" Dia. x 3.875" Lg.
43	710-0599		Hex Wash. Hd. S-Tap Scr. 1/4-20 x .50" Lg.	99	736-0331		Bell-Wash. .39" I.D. x 1.12"
44	17715B		Clutch/Brake Pedal Ass'y.	100	736-0256		FI-Wash. .64" I.D. x .94"
45	736-0264		FI-Wash. .344" I.D. x .62"	101	714-0470		Cotter Pin 1/8" Dia. x 1.25"
47	17686A		Brake Rod Ass'y.	102	710-0604		Hex Wash. Hd. Scr. 5/16-18 x .62" Lg.
48	735-0196		Foot Pad	103	734-1615		Hub Cap (Gray—Optional)
51	17705		Shift Lever Ass'y.		734-1614		Hub Cap (Beige—Optional)
53	732-0264		Ext. Spring .38" O.D. x 2.5"		734-1788		Hub Cap (Yellow—Optional)
54	732-0413		Ext. Spring .59" O.D. x 7.08" (Used w/20" Wheels w/o 46" Deck)	107	17860		Pedal Bracket
	732-0642		Ext. Spring 7.33" Lg. (Used w/18" Wheels or 46" Deck)	109	711-0198		Ferrule
55	710-1068		Hex Bolt 5/16-18 x 3.5" Lg. (Used w/18" Wheels or 46" Deck)	111	710-0195		Hex Bolt 1/4-28 x .50" Lg.
	710-0189		Hex Bolt 5/16-18 x 3" Lg.* (Used w/20" Wheels w/o 46" Deck)	112	736-0270		Bell-Wash. .265" I.D. x .75"
56	**		Wheel Ass'y. Comp.	113	17707		Shift Lever Link Ass'y.
57	**		Tire Only	115	736-0140		FI-Wash. .385" I.D. x .62"
58	734-0255		Wheel Rim Only	116	741-0404		Needle Brgs. (2 Req'd.)
59	710-0627		Air Valve (Service Only)	117	727-0425A		Spring Clip (Used w/Ref. No. 103)
61	732-0722		Hex Bolt 5/16-24 x .75" Lg.*	119	710-0427		Hex Bolt 3/8-16 x 1.25" Lg.
63	736-0275		Brake Return Spring Anchor	120	756-0217		FI-Idler w/Flanges 2.75" O.D.
64	710-0428		FI-Wash. .34" I.D. x .68" O.D.	121	736-0280		FI-Wash. .39" I.D. x 1.12" O.D.
			Hex Bolt 1/4-28 x 1.25" Lg.*	122	712-0798		Hex Nut 3/8-16 Thd.
				128	710-0650		Hex Wash. TT-Tap Scr. 5/16-18 x .75" Lg.
				129	710-0726		Hex Wash. AB-Tap Scr. 5/16-18 x .75" Lg.

# Models 660 thru 679

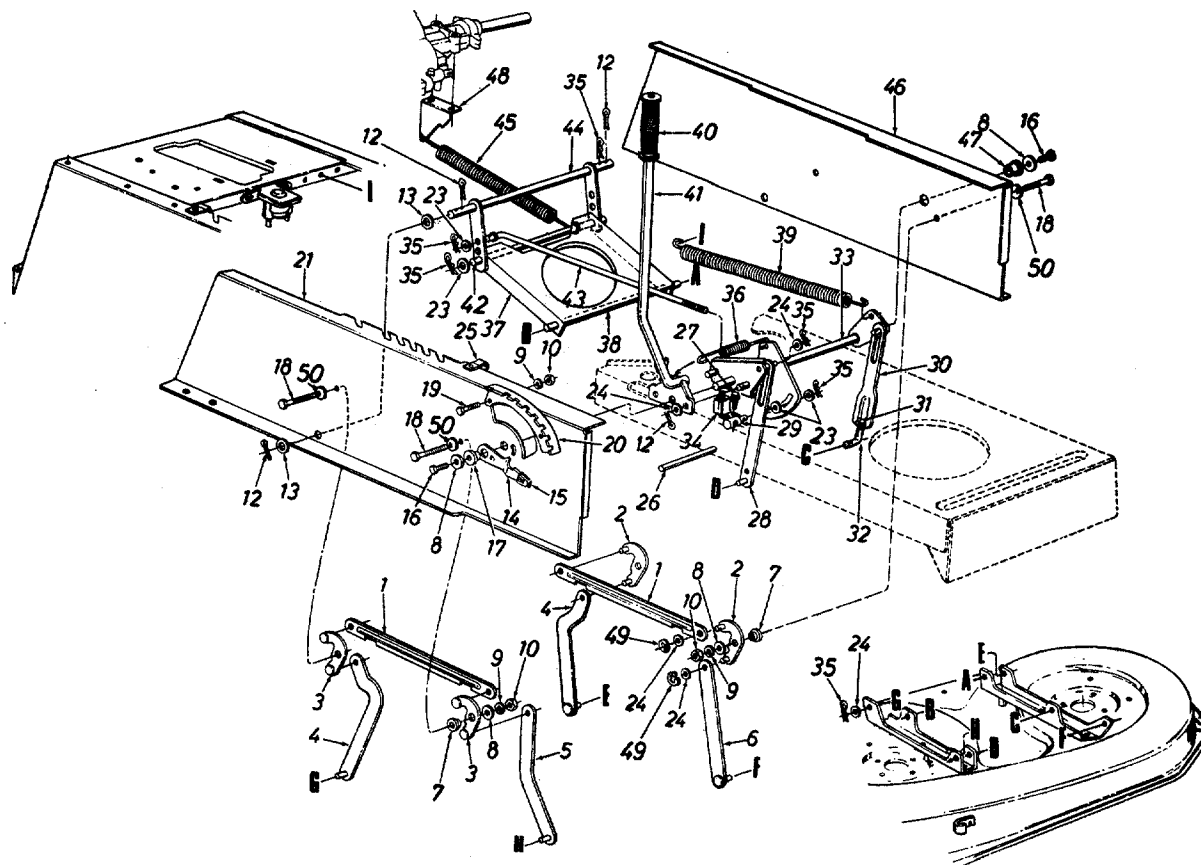


**PARTS LIST FOR MODELS 660 THRU 679 LAWN TRACTORS**

REF. NO.	PART NO.	CODE	DESCRIPTION	REF. NO.	PART NO.	CODE	DESCRIPTION
2	710-1208		Hex Wash. Hd. Tap Scr. 5/16-18 x 3.25" Lg.	39	783-0042		Upper Frame—R.H.
3	738-0155		Shld. Bolt .437" Dia. x .162"	41	712-0798		Hex Nut 3/8-16 Thd.*
4	738-0145		Shld. Bolt .50" Dia. x .84"	42	732-0581B		Extension Spring 5.31" Lg.
5	736-0141		Spr-Wash. .445" I.D. x .75	43	731-1200		Battery Cover
6	783-0039		Seat Pivot Bracket	44	725-1635		12-V Battery
7	751-0603		Fuel Cap	45	783-0043		Upper Frame—L.H.
8	751-0553		Fuel Tank (12.5 H.P. & Smaller)	46	—		Shift Cover (Refer to Style Sheet)
	751-0555		Fuel Tank (13 H.P. & Larger)				
9	726-0209		Tie Strap	47	725-1643		Reverse Safety Switch
10	751-0535-15		Fuel Line	48	726-0279		Insulator Plate
11	726-0205		Hose Clamp	49	17951		Seat Pivot Brkt. Support—L.H.
13	712-0287		Hex Nut 1/4-20 Thd.*	50	17953		Hitch Plate
14	736-0329		L-Wash. 1/4" I.D.	51	712-0267		Hex Nut 5/16-18 Thd.*
16	732-0735		Compression Spring	52	736-0119		L-Wash. 5/16" I.D.*
21	738-0526		Running Board Rod	53	17239A		Seat Lift Brkt.
22	710-0227		Hex Wash. Hd. AB-Tap Scr. #8 x .50" Lg.	54	757-0363		Seat 8-7/8" High
23	726-0139		Speed Nut #10Z		757-0364		Seat 8-7/8" High (Yellow)
24	783-0041		Front Pivot Brkt.		757-0360		Seat 10-5/8" High
25	710-0623		Hex Tap Scr. 3/8-16 x .75"		757-0365		Seat 10-5/8" High (Yellow)
26	710-0726		Hex Wash. Hd. AB-Tap Scr. 5/16 x .75" Lg.		757-0350		Seat 14-1/4" High
28	710-0134		Carriage Bolt 1/4-20 x .62"		757-0372		Seat 14-1/4" High (Yellow)
29	17770A		Running Board (R.H. & L.H.)	55	17950		Seat Pivot Brkt. Support—R.H.
30	761-0168A		Blade Brake Ass'y.	56	738-0296		Shld. Bolt .437" Dia. x .268"
32	731-0909		Rubber Foot Pad—L.H.**	57	725-1303		Spring Switch
	731-0910		Rubber Foot Pad—R.H.**	59	710-0650		Hex Wash. TT-Tap Scr. 5/16-18 x 7/8" Lg.
	723-0422		Abrasive Foot Pad**				Insulator Nut Plate
33	710-0323		Truss Mach. Scr. 5/16-18 x .75" Lg.*	62	726-0320		Safety Switch (Seat)
34	683-0065		Lower Frame	63	725-1439		Battery Tray Clip (Single Cylinder)
35	736-0169		L-Wash. 3/8" I.D.*	64	732-0674		Battery Tray
36	726-0278		Insulator Boss Plate	65	17952		Truss Mach. B-Tap Scr. #10 x .5" Lg.
37	736-0264		FI-Wash. .344" I.D. x .625" O.D.	66	710-0351		Spring Spacer
38	710-0118		Hex Bolt 5/16-18 x .75" Lg.*	67	748-0347		Pan Hd. Cutting Scr. 5/16-18 x .75" Lg.
				68	710-1221		Hex Bolt 5/16-18 x .75" Lg.*
				69	710-0118		

\*\*Optional Parts

# Models 660 thru 679

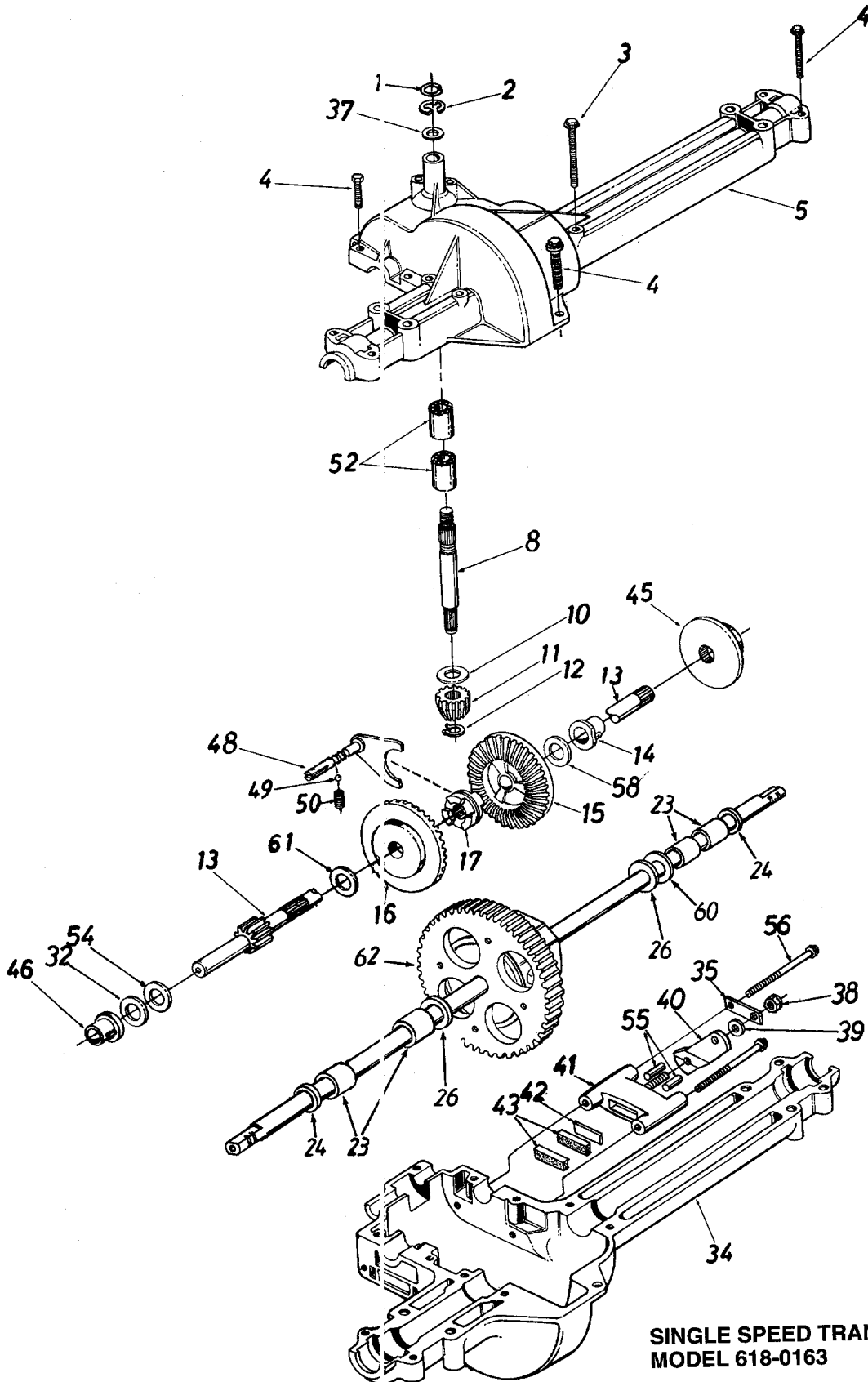


**PARTS LIST FOR MODELS 660 THRU 679 LAWN TRACTORS**

REF. NO.	PART NO.	CODE	DESCRIPTION	REF. NO.	PART NO.	CODE	DESCRIPTION
1	783-0103		Connecting Rod	25	726-0272		Clamp
2	683-0029A	N	Pivot Link Ass'y.—L.H.	26	738-0526		Running Board Rod
3	683-0028A	N	Pivot Link Ass'y.—R.H. (Uses "E"-Ring)	27	710-3007		Hex Wash. Hd. Tap Scr.
4	17710		Deck Hanger Link Ass'y.	28	14802A		Link Deck Lift Ass'y.
5	14800A		Deck Hanger Link Ass'y.	29	711-0723A		Adj. Ferrule 3/8-24 Thd.
6	14804A		Deck Hanger Link Ass'y.	30	17712		Adj. Deck Lift Link
7	748-0331		Shld. Spacer .318" I.D.	31	712-3066		Hex Nut 1/2-20 Thd. (Gr. 5)
8	736-0264		Fl-Wash. .344" I.D. x .62" O.D.	32	711-0841		Lift Link Adjuster
9	736-0119		L-Wash. 5/16" I.D.*	33	17637A		Lift Shaft Ass'y.
10	712-0267		Hex Nut 5/16-18 Thd.*	34	725-1657		Safety Switch (Deck)
12	714-0470		Cotter Pin 1/8" Dia.	35	714-0145		Inter. Cotter Pin 3/8" Dia.
13	736-0256		Fl-Wash. .635" I.D. x 1.0" O.D.	36	732-0637		Extension Spring
14	683-0003		Height Adj. Stop Lever Ass'y. (Incl. Ref. 15)†	37	17636B		Stabilizer Bracket
15	08540		Knob†	38	738-0670		Shaft 1/2" Dia. x 10.28" Lg.
16	710-0604		Hex Wash. TT-Tap Scr. 5/16-18 x .75" Lg.	39	732-0638		Extension Spring
17	748-0176		Flange Brg. .63" I.D.†	40	720-0233		Grip (Lift Handle)
18	710-1238		Hex Wash. Hd. Scr. 5/16-18 x .875" Lg.	41	17675		Deck Lift Handle Ass'y.
19	710-0118		Hex Bolt 5/16-18 x .75" Lg.	42	738-0669		Shaft 3/8" Dia. x 9.34" Lg.
20	17730		Index Brkt.	43	747-0598		Disengagement Rod
21	783-0042		Upper Frame—R.H.	44	17624		Stabilizer Shaft Ass'y.
23	736-0267		Fl-Wash. .385" I.D. x .87" O.D.	45	732-0556		Extension Spring 7.58" Lg.
24	736-0160		Fl-Wash. .531" I.D. x .93" O.D.	46	783-0043		Upper Frame—L.H.
				47	741-0313		Flange Brg. .632" I.D.
				48	17128A		Spring Retainer Brkt.
				49	716-0104		"E"-Ring
				50	736-0425		Bell-Wash. .325" I.D.

†Optional

# Models 660 thru 679





# Models 660 thru 679

## PARTS LIST FOR SINGLE SPEED TRANSAXLE RIGHT HAND 618-0163

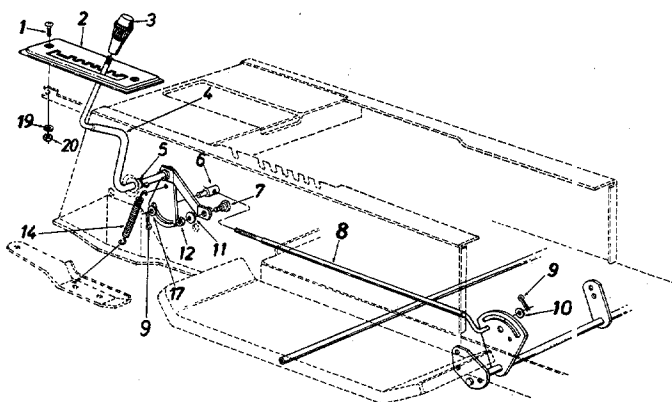
REF. NO.	PART NO.	CODE	DESCRIPTION	REF. NO.	PART NO.	CODE	DESCRIPTION
1	732-0614		Wire Ring	39	736-0371		Fl-Wash. .344" I.D. x .875" O.D.
2	716-0231		"E"—Ring	40	717-0700		Actuating Arm
3	710-1026		Hex Wash. TT-Tap Scr. 1/4-20 x 1.75" Lg.*	41	761-0198		Brake Yoke
4	710-0809		Hex Tap Scr. 1/4-20 x 1.25" Lg.	42	717-0682		Puck Plate
5	719-0314		Upper Housing	43	717-0678		Brake Puck
8	711-0861		Input Shaft	45	761-0202		Brake Disc
10	736-0335		Thrust Washer 5/8" I.D. x 1.25" O.D.	46	741-0337		Flange Bearing 5/8" I.D. x 15/16" Lg.
11	717-0633		Pinion Input 14T	48	611-0011		Shift Fork Ass'y.
12	716-0171		Retaining Ring	49	741-0862		Ball Detent .250" Dia.
13	711-1003		Drive Shaft—R.H. Brake	50	732-0863		Spring Detent
14	741-0336		Flange Brg. 5/8" I.D. x 3/4" Lg.*	52	741-0335		Needle Brg. 5/8" I.D. x 1/2" Lg.
15	717-1362		Bevel Gear 42T Small I.D.	54	736-0349		Fl-Wash. 5/8" I.D. x 1" O.D. x .020 Thk.
16	717-1363		Bevel Gear 42T Large I.D.	55	741-0343		Actuating Pin 5/16" Dia.
17	718-0228		Clutch Collar	56	710-1206		Hex Wash Hd. Self-Tap Scr. 1/4-20 Thd.
21	710-0862A		Pan Head Scr. 1/4-20 x .50" Lg. w/Patch	58	736-0349		Fl-Wash. 5/8" I.D. x 1" O.D. x .020 Thk.
23	741-0340		Sleeve Bearing 3/4" I.D. x 1.0" Lg.		736-0495		Thrust Wash. 5/8" I.D. x 1" O.D. x .025" Thk.
24	721-0338		Oil Seal 3/4" I.D.	60	**		Washer (See Below)
26	736-0445		Fl-Wash. .760" I.D. x 1.5" O.D.	61	736-0519		Thrust Washer
32	**		Washer (See Below)	62	618-0162	N	Differential Ass'y.
34	719-0313		Lower Housing	—	737-0148		Grease—Shell (15 oz.)
35	718-0150		Anti-Rotation Brkt.				
37	**		Washer (See Below)				
38	712-0273		Hex Nut 5/16-24 Thd.				

\*\*Ref. No. 32 736-0495 Thrust Wash. 5/8" I.D. x 1" O.D. x .025" Thk.  
736-0336 Fl-Wash. 5/8" I.D. x 1" O.D. x .030" Thk.  
736-0494 Thrust Wash. 5/8" I.D. x 1" O.D. x .035" Thk.  
736-0337 Fl-Wash. 5/8" I.D. x 1" O.D. x .040" Thk.

\*\*Ref. No. 37 736-0349 Fl-Wash. 5/8" I.D. x 1" O.D. x .020" Thk.  
736-0336 Fl-Wash. 5/8" I.D. x 1" O.D. x .030" Thk.  
736-0337 Fl-Wash. 5/8" I.D. x 1" O.D. x .040" Thk.

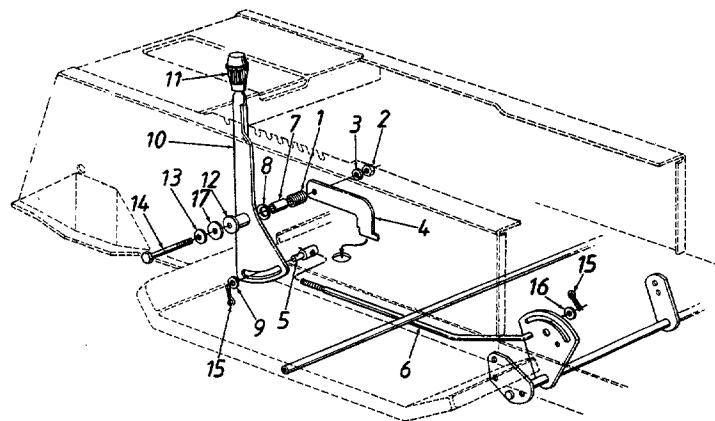
\*\*Ref. No. 60 736-0492 Fl-Wash. .76" I.D. x 1.5" O.D. x .010" Thk.  
736-0493 Fl-Wash. .76" I.D. x 1.5" O.D. x .020" Thk.  
736-0351 Fl-Wash. .76" I.D. x 1.5" O.D. x .030" Thk.  
736-0445 Fl-Wash. .76" I.D. x 1.5" O.D. x .060" Thk.

# Models 660 thru 679



**PARTS LIST FOR MODELS 670 THRU 679  
LAWN TRACTORS**

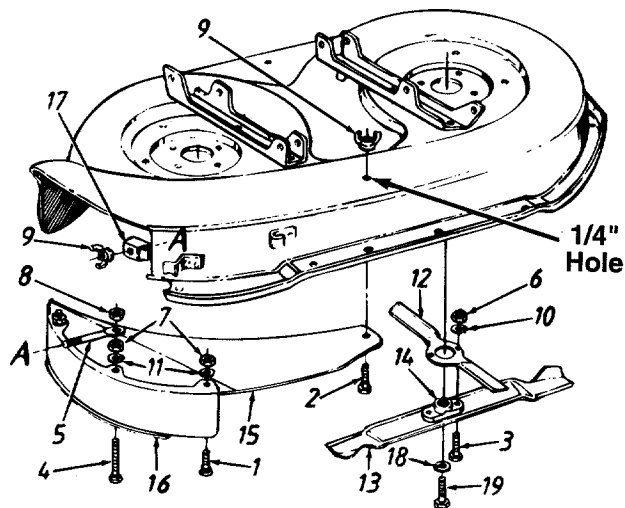
REF. NO.	PART NO.	CODE	DESCRIPTION
1	710-0924		Truss Mach. Scr. 1/4-20 x .75" Lg.
2	17469		7-Speed Selector Plate
3	720-0218		Shift Knob
4	16192A		Speed Selector Lever Ass'y.
5	736-0192		Flat Washer .53" I.D. x .93"
6	711-0198		Ferrule 3/8-24 x .37" Dia.
7	738-0155		Shoulder Bolt
8	747-0503A		Speed Control Link
9	714-0111		Cotter Pin 3/32" Dia. x 1.0"
10	736-0226		Fl-Wash. .469" I.D. x .88"
11	736-0119		L-Wash. 5/16" I.D.*
12	712-0267		Hex Nut 5/16-18 Thd.*
14	732-0303		Spring .38" O.D. x 3.18" Lg.
17	736-0140		Fl-Wash. .385" I.D. x .62"
19	736-0329		L-Wash. 1/4" I.D.*
20	712-0287		Hex Nut 1/4-20 Thd.*



**PARTS LIST FOR MODELS 660 THRU 669  
LAWN TRACTORS**

REF. NO.	PART NO.	CODE	DESCRIPTION
1	732-0645		Compression Spring
2	712-0267		Hex Nut 5/16-18 Thd.*
3	736-0119		L-Wash. 5/16" I.D.*
4	17956		Shift Lever Support
5	711-0198		Ferrule 3/8-24 Thd.
6	747-0787		Speed Control Rod
7	750-0662		Spacer 1.56" Lg.
8	736-0253		Bell-Wash. .505" I.D. x 1"
9	736-0300		Fl-Wash. .385" I.D. x .87"
10	17888A		Speed Selector Lever
11	720-0232		Shift Knob
12	750-0913		Spacer 1.46" Lg.
13	736-0242		Bell-Wash. .345" I.D. x .88"
14	710-3056		Hex Bolt 5/16-18 x 3.25" Lg.
15	714-0111		Cotter Pin 3/32" Dia. x 1"
16	736-0226		Fl-Wash. .469" I.D. x .88"
17	736-0418A		Fl-Wash. .34" I.D. x 2.25"

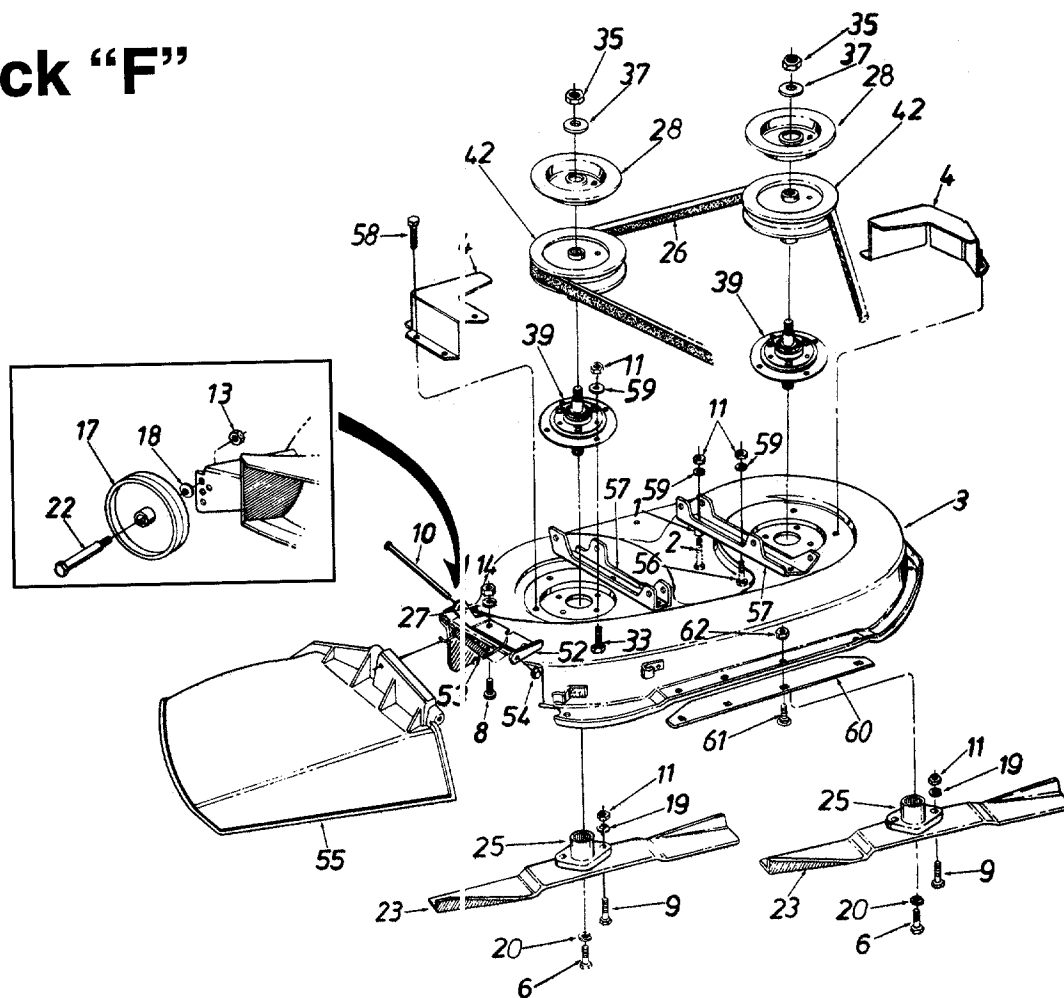
# Models 096 (38") and 097 (42")



**PARTS LIST FOR MODELS 096 AND 097  
MULCHING KITS**

REF. NO.	PART NO.	DESCRIPTION	QTY.
1	710-0134	Carriage Bolt 1/4-20 x .62" Lg.	2
2	710-0258	Hex Bolt 1/4-20 x .62" Lg.	1
3	710-3029	Hex Bolt 7/16-20 x 1.25" Lg. (Gr. 5)	4
4	710-0932	Carriage Bolt 1/4-20 x 1" Lg.	1
5	711-0957	Retaining Bolt	1
6	712-0378	Hex Nut 7/16-20 Thd.	4
7	712-0287	Hex Nut 1/4-20 Thd.	3
8	712-0291	Hex L-Nut 1/4-20 Thd.	1
9	712-0397	Wing Nut	2
10	736-0171	L-Wash. 7/16" I.D.	4
11	736-0329	L-Wash. 1/4" I.D.	3
12	742-0539	Mulching Blade 12.5"	2
13	742-0537	Mulching Blade 19.38" (096)	2
	742-0538	Mulching Blade 21.2" (097)	2
14	748-0365	Blade Adapter	2
15	783-0024	Top Mulching Baffle (096)	1
	783-0026	Top Mulching Baffle (097)	1
16	783-0025	Side Mulching Baffle (096)	1
	783-0027	Side Mulching Baffle (097)	1
17	783-0028	Locking Bracket	1
18	736-0217	L-Wash. 3/8" I.D.	2
19	710-1039	Hex Bolt 3/8-24 x 1" Lg. (Gr. 8)	2

# Deck "F"



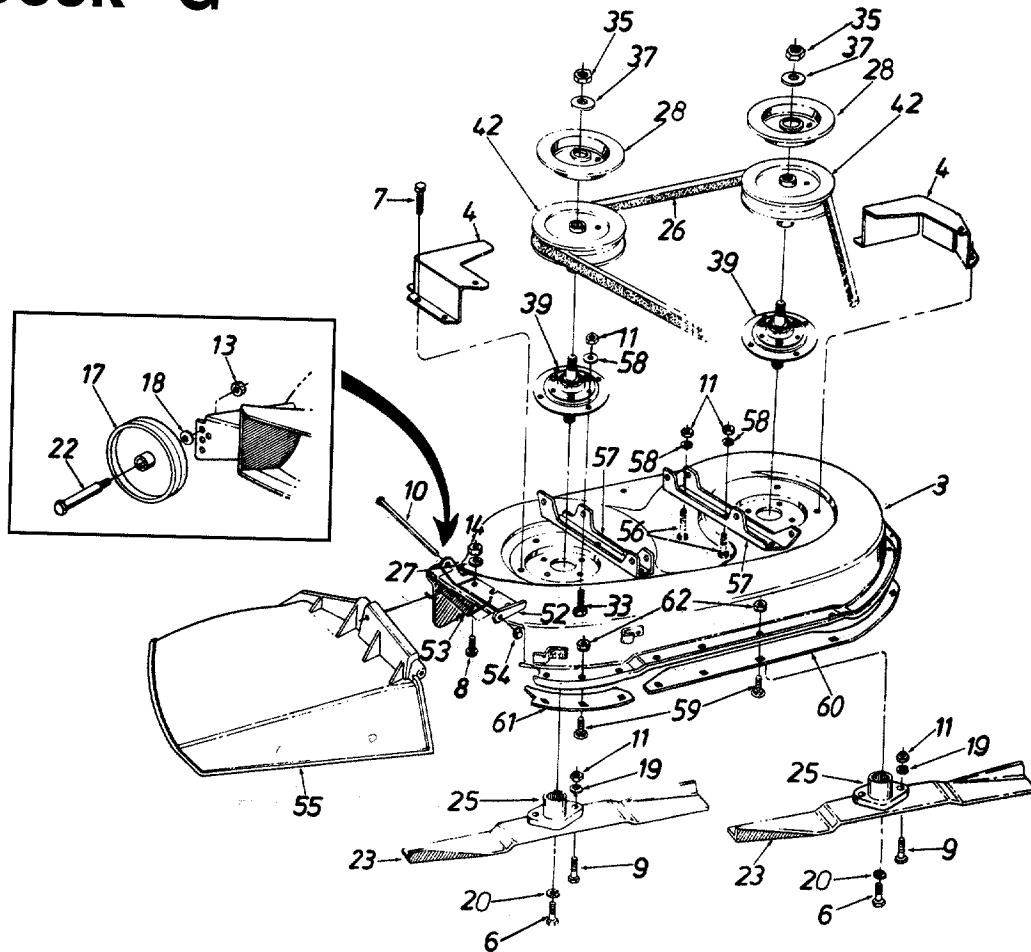
**PARTS LIST FOR 38" MOWING DECK**

REF. NO.	PART NO.	CODE	DESCRIPTION	REF. NO.	PART NO.	CODE	DESCRIPTION
1	750-0776		Spacer .33" I.D. x .88"	23	742-0473A		High-Lift Blade
2	710-0672		Hex Bolt 5/16-24 x 1.25" Lg.	25	748-0300		Blade Adapter
3	17503B		38" Deck Ass'y. w/Deck Wheels	26	754-0433		V-Belt
	801-7503		38" Deck Ass'y. Comp. w/Deck Wheels (For Service Only)	27	736-0270		Bell-Wash. 1/4" I.D.
	17717B		38" Deck Ass'y. w/o Deck Wheels	28	09322		Brake Disc
	813-06102		38" Deck Ass'y. w/o Deck Wheels (For Service Only)	33	710-0157		Hex Bolt 5/16-24 x .75" Lg.
4	17665		Belt Guard Deck	35	712-0318		Hex Jam Nut 5/8-18 Thd.
6	710-0152		Hex Bolt 3/8-24 x 1.0" Lg.	37	736-0158		L-Wash. 5/8" I.D.*
8	710-0258		Hex Bolt 1/4-20 x .62"	39	717-0906A		Blade Spindle Ass'y. Comp.
9	710-0888		Hex Bolt Special 5/16-24 x 1.0"	42	756-0486		5" Dia. Pulley
10	711-0792		Hinge Pin	52	703-1693		Hinge Mtg. Brkt.
11	712-0123		Hex Nut 5/16-24 Thd.*	53	732-0602		Torsion Spring
13	712-0181		Hex Top L-Nut 3/8-13 Thd.†	54	726-0106		Push Nut
14	712-0287		Hex Nut 1/4-20 Thd.	55	731-1032		Chute Ass'y. Comp. (Incl. Ref. 10, 52, 53, 54, 55)
17	734-0973		Deck Wheel—5"†	56	710-0157		Hex Bolt 5/16-24 x .75" Lg.
18	736-0105		Bell-Wash. .40" I.D. x .88" O.D.†	57	17493A		Deck Hanger Channel
19	736-0119		L-Wash. 5/16" I.D.*	58	710-0599		Hex Wash. Hd. TT-Tap Scr. 1/4-20 x .5" Lg.
20	736-0217		L-Wash. 3/8" I.D.—I.D.	59	736-0242		Bell-Wash. .345" I.D. x .88"
22	738-0373		Shld. Bolt .498" Dia. x 1.53"†	60	17863		Skirt Ext.
				61	710-0167		Carr. Bolt 1/4-20 x .5" Lg.
				62	712-0271		Hex Sems Nut 1/4-20 Thd.

\*For faster service obtain standard nuts, bolts and washers locally.  
If these items cannot be obtained locally, order by part number and size as shown on parts list.

†Optional Deck Assembly with Wheels.

# Deck "G"

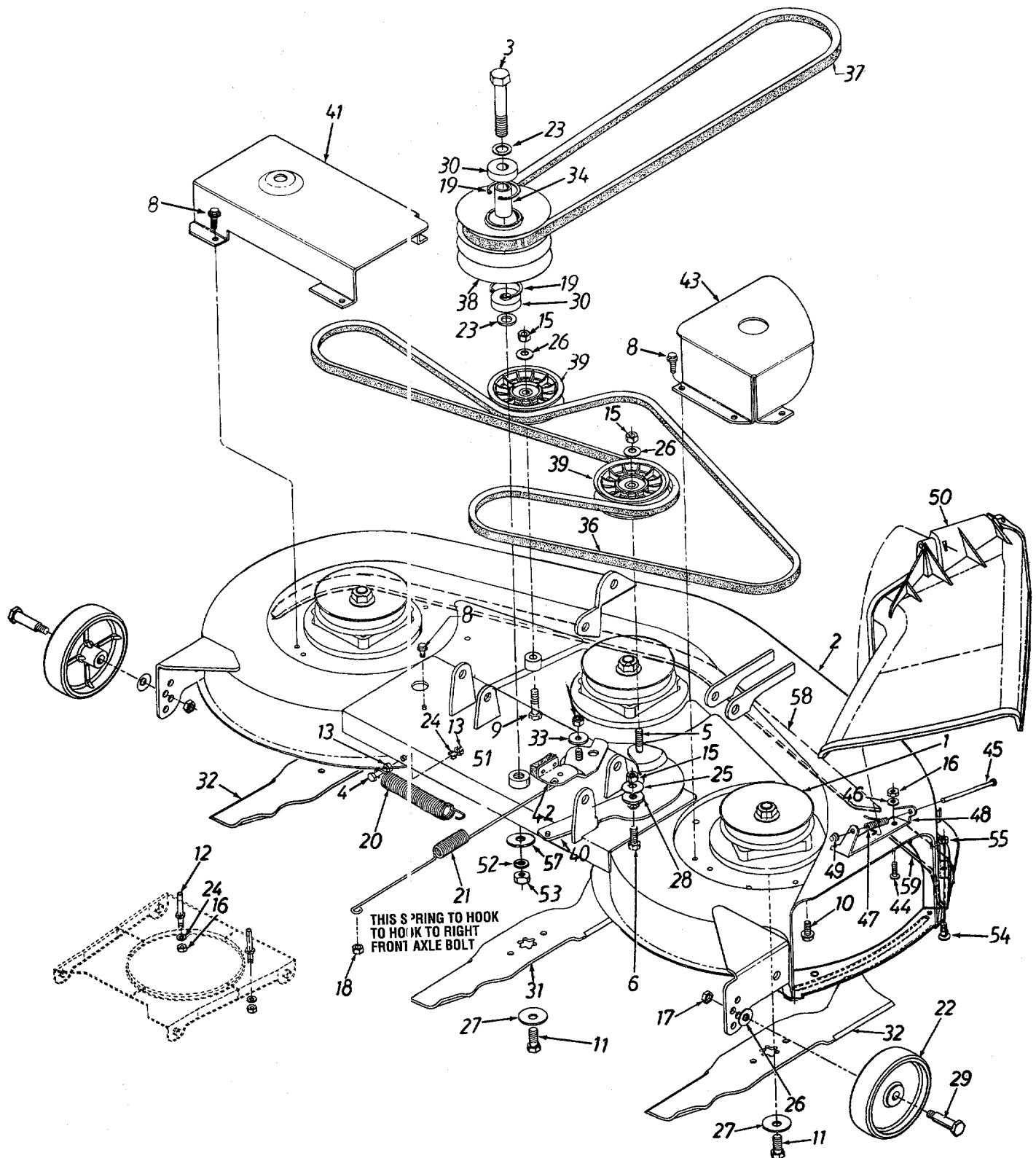


**PARTS LIST FOR 42" MOWING DECK**

REF. NO.	PART NO.	CODE	DESCRIPTION	REF. NO.	PART NO.	CODE	DESCRIPTION
3	17600A 813-06119		42" Deck Ass'y. 42" Deck Ass'y. Comp. (For Service Only)	26	754-0371A		V-Belt
4	17664		Belt Guard Deck	27	736-0270		Bell-Wash. 1/4" I.D.
6	710-0152		Hex Bolt 3/8-24 x 1.0" Lg.	28	09322		Brake Disc
7	710-0599		Hex Wash. Hd. TT-Tap Scr. 1/4-20 x .5" Lg.	33	710-0157		Hex Bolt 5/16-24 x .75" Lg.
8	710-0258		Hex Bolt 1/4-20 x .62"	35	712-0318		Hex Jam Nut 5/8-18 Thd.
9	710-0888		Hex Bolt Special 5/16-24 x 1.0"	37	736-0158		L-Wash. 5/8" I.D.*
10	711-0792		Hinge Pin	39	717-0906A		Blade Spindle Ass'y. Comp.
11	712-0123		Hex Nut 5/16-24 Thd.*	42	756-0556		5.5" Dia. Pulley
13	712-0181		Hex Top L-Nut 3/8-16 Thd.	52	703-1693		Hinge Mtg. Brkt.
14	712-0287		Hex Nut 1/4-20 Thd.*	53	732-0602		Torsion Spring
17	734-0973		Deck Wheel—5"	54	726-0106		Push Nut
18	736-0105		Bell-Wash. .40" I.D. x .88" O.D.	55	731-1032		Chute Ass'y. Comp. (Incl. Ref. 10, 52, 53, 54, 55)
19	736-0119		L-Wash. 5/16" I.D.*	56	710-0157		Hex Bolt 5/16-24 x .75" Lg.
20	736-0217		L-Wash. 3/8" I.D.—H.D.	57	17493A		Deck Hanger Channel
22	738-0373		Shld. Bolt .498" Dia. x 1.53"	58	736-0242		Bell-Wash. .345" I.D. x .88"
23	742-0499A		High-Lift Blade	59	710-0167		Carr. Bolt 1/4-20 x .5" Lg.
25	748-0300		Blade Adapter	60	17861A		Deck Skirt Ext.—Long
				61	17961		Deck Skirt Ext.—Short
				62	712-0271		Hex Sems Nut 1/4-20 Thd.

\*For faster service obtain standard nuts, bolts and washers locally.  
If these items cannot be obtained locally, order by part number  
and size as shown on parts list.

# Deck "H"



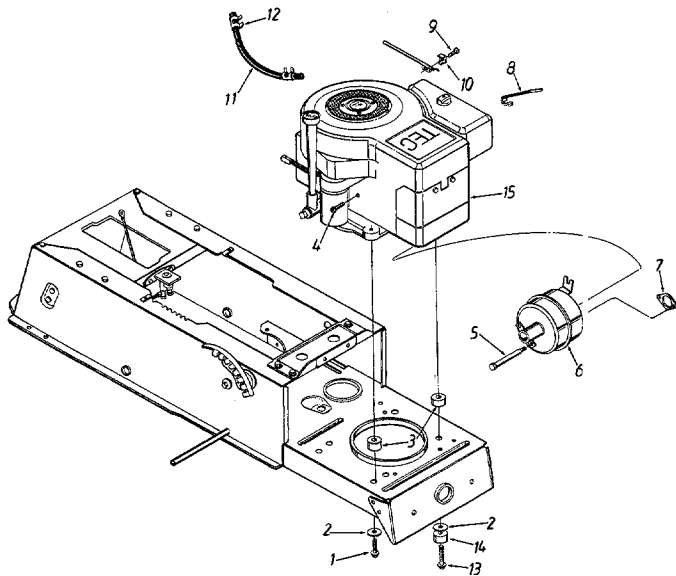
# Deck "H"

## PARTS LIST FOR 46" MOWING DECK

REF. NO.	PART NO.	CODE	DESCRIPTION	REF. NO.	PART NO.	CODE	DESCRIPTION
1	618-0116	N	Blade Spindle Ass'y.	29	738-0373	N	Shld. Bolt .498" x 1.525"
2	683-0067		46" Deck Ass'y.	30	741-0524		Ball Brg. .625" I.D. x 1.574" O.D. x .47"
	813-06921		46" Deck Ass'y. Comp. (For Service)	31	742-0543		High Lift Blade 14.88" Lg.
3	710-3151		Hex Bolt 5/8-18 x 4.25" Lg.	32	742-0542		High Lift Blade 16.28" Lg.
4	710-0428		Hex Bolt 1/4-28 x 1.25" Lg.	33	748-0234		Shoulder Spacer
5	710-0459		Hex Bolt 3/8-24 x 1.5" Lg.	34	750-0932		Spacer .635" I.D. x .088" O.D.
6	710-0152		Hex Bolt 3/8-24 x 1" Lg.	36	754-0440		V-Belt
8	710-0599		Hex Wash. Hd. TT-Tap Scr. 1/4-20 x .5" Lg.	37	754-0439		V-Belt
9	710-0151		Hex Bolt 3/8-24 x 2" Lg.	38	756-0638		Pulley Double Deck 5" O.D.
10	710-1260		Hex Flange Bolt 5/16-24 x .75" Lg.	39	756-0627		Flat Idler Pulley 3.5 O.D.
11	710-1262		Hex Patch L-Bolt 7/16-20 x 1" Lg.	40	783-0046		Idler Deck Bracket
12	711-0993		Belt Guard Pin	41	783-0063A		Belt Cover L.H.
13	712-0138		Hex Nut 1/4-28 Thd.	42	17116		Deck Brake Brkt. Ass'y.
14	712-0429		Hex Ins. L-Nut 5/16-18 Thd.	43	17258A		Belt Cover Brkt. R.H.
15	712-0241		Hex Nut 3/8-24 Thd.	44	710-0258		Hex Bolt 1/4-20 x .62" Lg.
16	712-0287		Hex Nut 1/4-20 Thd.	45	711-0792		Hinge Pin
17	712-0181		Hex Top Jam Nut 3/8-16 Thd.	46	736-0270		Bell-Wash. 1/4" I.D.
18	712-3068		Hex Patch L-Nut 5/16-18 Thd.	47	732-0602		Torsion Spring
19	716-3020		Int. Snap Ring	48	703-1693		Hinge Mtg. Brkt.
20	732-0594A		Ext. Spring .88" O.D. x 6.17"	49	726-0106		Push Nut
21	732-0723		Ext. Spring .788" O.D. x 15.5"	50	731-1032		Chute Ass'y. Comp. (Incl. Ref. 45, 47, 48, 49, 50)
22	734-0973		Deck Wheel	51	750-0960		Spacer .635" I.D. x 1" O.D.
23	736-0290		FI-Wash. .635" I.D. x 1" O.D. x .06"	52	736-0158		L-Wash. 5/8" I.D.
24	736-0329		L-Wash. 1/4" I.D.*	53	712-0337		Hex Nut 5/8-18 Thd.
25	736-0331		Bell-Wash. 3/8" x 1.125" x .062"	54	710-0167		Carriage Bolt 1/4-20 x .5" Lg.
26	736-0105		Bell-Wash. 3/8" x .87" x .064"	55	712-0271		Hex Sems Nut 1/4-20 Thd.
27	736-0510		Bell-Washer	57	736-3088		FI-Wash. .635" I.D.
28	738-0347		Shoulder Spacer .625" I.D. x .169"	58	783-0141		Center Deck Skirt
				59	783-0142		R.H. Deck Skirt

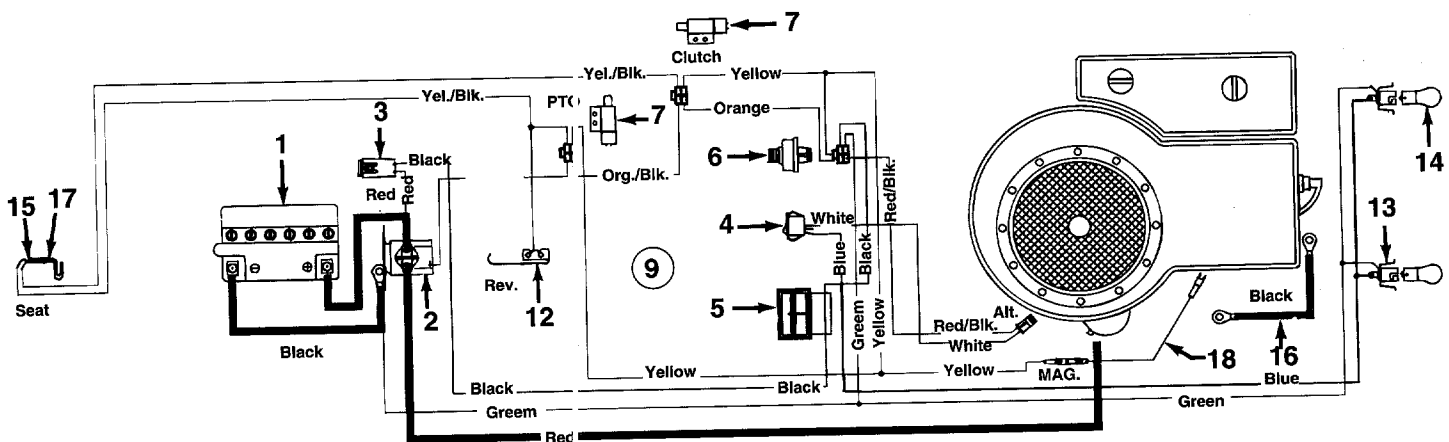
# Models 660 thru 679 (Tecumseh)

PARTS LIST FOR MODELS 660 THRU 679



REF. NO.	PART NO.	CODE	DESCRIPTION
1	710-1007		Hex L-Wash. TT-Tap Scr. 3/8-16 x 1.5" Lg.
2	736-0247		FI-Wash. 3/8" I.D. x 1-1/4" O.D.
3	750-0965		Shld. Spacer .38" I.D. x 1.25" O.D.
4	710-0323		Pan Hd. Mach. Scr. 5/16-18 x .75" Lg.
5	738-0636		Shld. Bolt 7/16" Dia. x 3-5/8" Lg. (12 & 12.5 H.P. Only)
6	751-0443A		Muffler (12 & 12.5 H.P. Only)
7	721-0208		Exhaust Gasket (12 & 12.5 H.P. Only)
8	726-0197		Cable Tie
9	710-0899A		Hex Sems Scr. #10-32 x 5/8" Lg.
10	751-0360A		Casing Clamp
11	751-0535-15		Fuel Line
12	726-0205		Hose Clamp
13	710-1035		Hex L-Wash. TT-Tap Scr. 3/8-16 x 2.5" Lg. (16 H.P. Only)
14	750-0965		Shld. Spacer .38" I.D. x 1.25" O.D. (16 H.P. Only)
15	—		Engine

# Models 660 thru 679 (Single Cylinder)

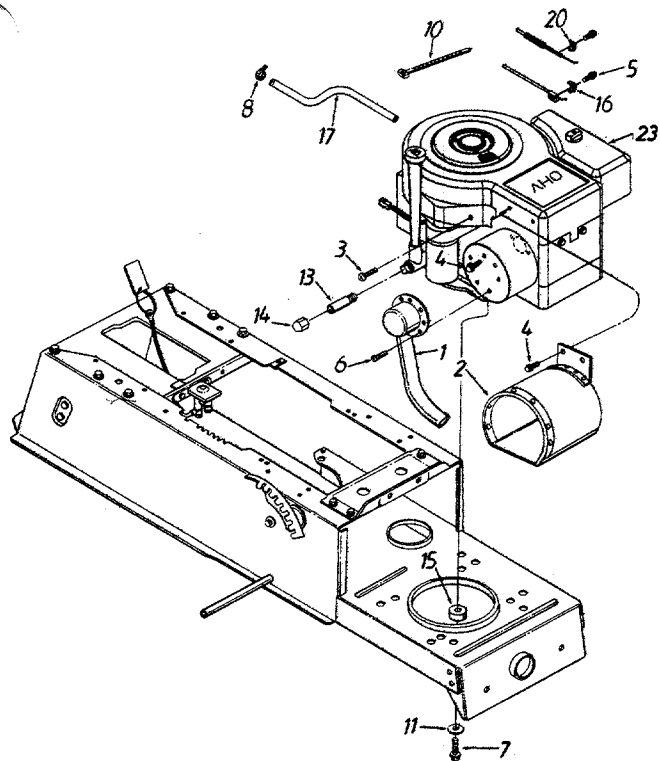


PARTS LIST FOR MODELS 660 THRU 679 LAWN TRACTORS

REF. NO.	PART NO.	CODE	DESCRIPTION	REF. NO.	PART NO.	CODE	DESCRIPTION
1	725-1635		Battery	12	725-1643		Safety Switch (Reverse)
2	725-1426		Solenoid	13	725-1649		Socket (Used on Styles 0, 5)
3	725-1625		Fuse 7.5 Amps		725-1650		Socket (Used on Styles 8, 9)
4	725-0634		Light Switch (Optional)		725-1651		Socket (Used on Styles 1, 3, 7)
5	725-0925		Ammeter (Optional)	14	725-0963		Bulb (Headlight)
6	725-0267		Ignition Switch	15	725-1303		Safety Switch (Seat)
7	725-1657		Safety Switch (Clutch)	16	725-0980		Ground Wire 7.5" Lg.
9	629-0201		Wire Harness w/o Ammeter	17	725-1439		Safety Switch (Seat)
	629-0203		Wire Harness w/Ammeter	18	629-0207		Harness Adaptor



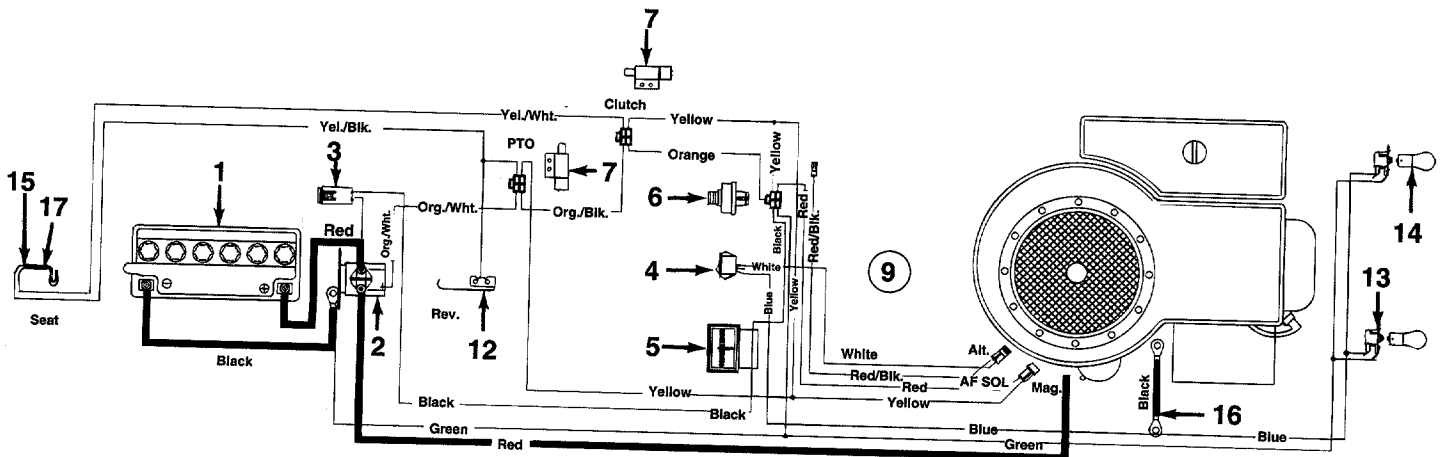
# Models 660 thru 679 (O.H.V.)



**PARTS LIST FOR MODELS 660 THRU 679**

REF. NO.	PART NO.	DESCRIPTION
1	651-0005	Exhaust Pipe Ass'y.
2	683-0072	Heat Shield Ass'y.
3	710-0323	Pan Hd. Mach. Scr. 5/16-18 x .75"
4	710-0599	Hex Wash. Hd. Scr. 1/4-20 x .5"
5	710-1237	Hex Slot Wash. Hd. #10-32 x 5/8" Lg.
6	710-0148	Hex Wash. Hd. F-Tap Scr. #8-32 x .38"
7	710-1007	Hex L-Wash. TT-Tap Scr. 3/8-16 x 1.5"
8	726-0205	Hose Clamp—.49" Dia.
10	726-0197	Cable Tie—4" I.D.
11	736-0247	Flat Wash. 3/8" I.D. x 1.25" O.D.
13	737-0199	Pipe Nipple 3/8-18 NPT x 2" Lg.
14	737-0143	Cap—Oil Drain
15	750-0965	Shld. Spacer .38" I.D. x 1.25" O.D.
16	751-0360A	Casing Clamp
17	751-0535-15	Fuel Line Hose
20	751B221535	Casing Clamp
23	—	Engine

# Models 660 thru 679 (O.H.V.)

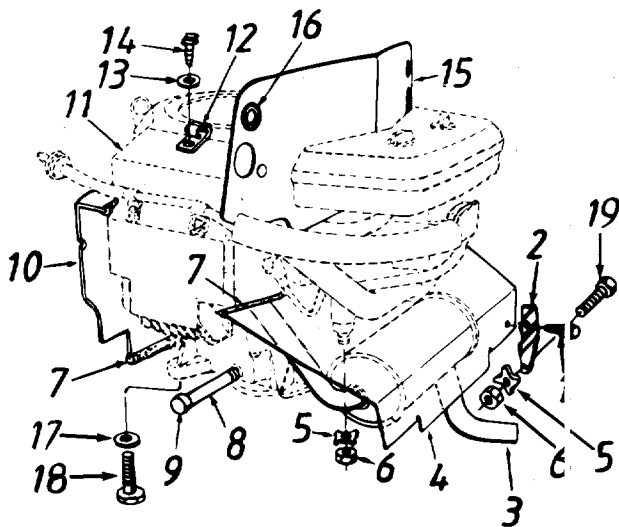


**PARTS LIST FOR ELECTRICAL SYSTEM**

REF. NO.	PART NO.	DESCRIPTION	REF. NO.	PART NO.	DESCRIPTION
1	725-1635	Battery	12	725-1643	Safety Switch (Reverse)
2	725-1426	Solenoid	13	725-1649	Socket (Styles 0, 5)
3	725-1625	Fuse 7.5 Amps		725-1650	Socket (Used on Styles 8, 9)
4	725-0634	Light Switch		725-1651	Socket (Used on Styles 1, 3, 7)
5	725-0925	Ammeter	14	725-0963	Bulb (Headlight)
6	725-1396	Ignition Switch	15	725-1303	Safety Switch (Seat)
7	725-1657	Safety Switch (Clutch)	16	725-0980	Ground Wire 7.5" Lg.
9	629-0202	Wire Harness	17	725-1439	Safety Switch (Seat)

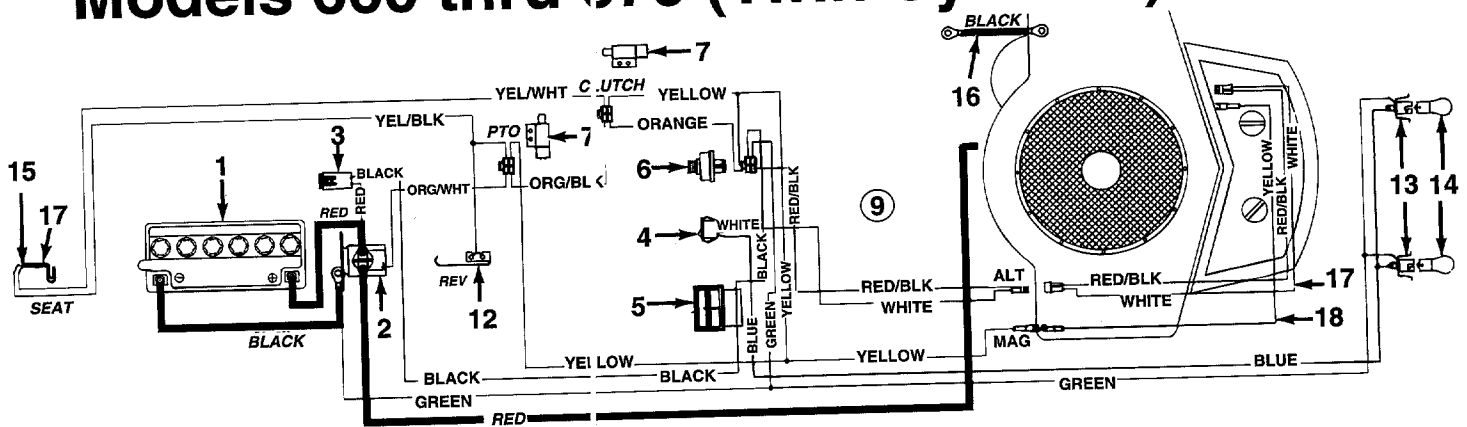
# Models 660 thru 679 (Twin Cylinder)

## PARTS LIST FOR MODELS 660 THRU 679 LAWN TRACTORS



REF. NO.	PART NO.	CODE	DESCRIPTION
1	710-0776A		Hex AB-Tap Scr. 1/4 x .62"
2	17450		Muffler Heat Shield Mtg. Brkt.—R.H. (Not Shown)
	17449		Muffler Heat Shield Mtg. Brkt.—L.H.
3	751-0474		Muffler
4	16934		Front Heat Shield
5	736-0170		Spec. L-Wash. 5/16 x .88"
6	712-0267		Hex Nut 5/16-18 Thd.
7	731-0511-12		Trim Strip 12" Lg.
8	737-0164		Pipe Nipple
9	737-0143		Oil Drain Cap
10	16804C		Rear Baffle (Used on Styles 8 and 9)
11	—		Engine
12	726-0272		Clamp
13	736-3067		FI-Wash. .188" I.D. x .438"
14	710-0779A		Truss Mach. AB-Tap Scr. #10 x .5" Lg.
15	783-0161		Heat Shield (Styles 3 & 5 Only)
16	735-0328		Rubber Grommet (Used w/Ref. 15)
17	736-0247		FI-Wash. .406" I.D. x 1-1/4" O.D.
18	710-0502A		Hex L-Wash. TT-Tap Scr. 3/8-16 x 1.5" Lg.
19	710-1087		Hex Bolt 5/16-18 x 5/8" Lg.

# Models 660 thru 679 (Twin Cylinder)



## PARTS LIST FOR ELECTRICAL SYSTEM

REF. NO.	PART NO.	DESCRIPTION	REF. NO.	PART NO.	DESCRIPTION
1	725-1635	Battery	13	725-1649	Socket (Used on Styles 0, 5)
2	725-1426	Solenoid		725-1650	Socket (Used on Styles 8, 9)
3	725-1625	Fuse 7.5 Amps		725-1651	Socket (Used on Styles 1, 3, 7)
4	725-0634	Light Switch	14	725-0963	Bulb (Headlight)
5	725-0925	Ammeter	15	725-1303	Safety Switch (Seat)
6	725-0267	Ignition Switch	16	725-0980	Ground Wire 7.5" Lg.
7	725-1657	Safety Switch	17	725-1439	Safety Switch (Seat)
9	629-0203	Wire Harness	18	629-0125	Harness Adapter
12	725-0759	Safety Switch (Reverse)	19	629-0208	Harness Adapter
			—	731-1284	Harness Conduit (Not Shown)