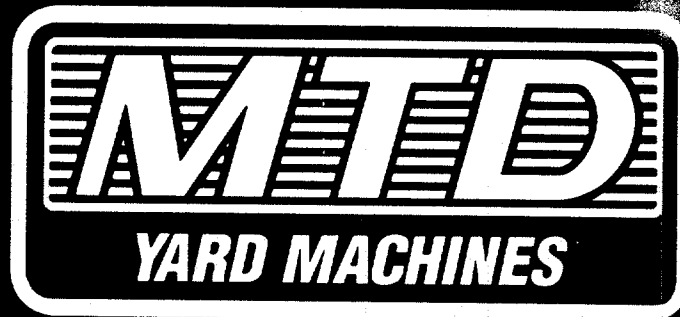


ILLUSTRATED PARTS

AMERICAN  AMERICAN
M A D E O W N E D
OUTDOOR POWER EQUIPMENT



1995

SNOW THROWERS 600 SERIES

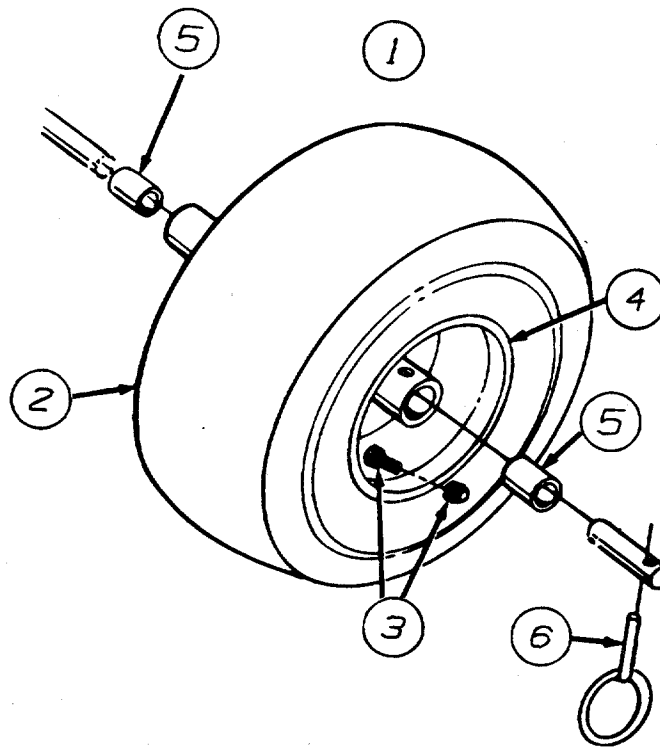
INDEX ON PAGE 2

MTD PRODUCTS INC • P.O. BOX 368022 • CLEVELAND, OHIO 44136-9722

FORM NO. 770-95-9B

INDEX

Model No.		Page	Model No.		Page
315-611D000	MTD		315E661E118	SAMS	
Wheels.....	3		Wheels.....	3	
Handle Assembly	6, 7		Handle Assembly	6, 7	
Blower Housing	12, 13		Blower Housing.....	12, 13	
Frame Assembly	14, 15		Frame Assembly	14, 15	
Engine & V-Belts	16		Engine & V-Belts	18	
315-641E000	MTD		315E611D352	WAL*MART	
Wheels.....	3		Wheels.....	3	
Handle Assembly	6, 7		Handle Assembly	6, 7	
Blower Housing	12, 13		Blower Housing.....	12, 13	
Frame Assembly	14, 15		Frame Assembly	14, 15	
Engine & V-Belts	18		Engine & V-Belts	16	
315E610E000	MTD		315-613E131	TRACTOR SUPPLY	
Wheels.....	3		Wheels.....	3	
Handle Assembly	4, 5		Handle Assembly	10, 11	
Blower Housing.....	12, 13		Blower Housing.....	12, 13	
Frame Assembly	14, 15		Frame Assembly	14, 15	
Engine & V-Belts	16		Engine & V-Belts	16	
315E640F000	MTD		315E643F131	TRACTOR SUPPLY	
Wheels.....	3		Wheels.....	3	
Handle Assembly	4, 5		Handle Assembly	10, 11	
Blower Housing.....	12, 13		Blower Housing.....	12, 13	
Frame Assembly	14, 15		Frame Assembly	14, 15	
Engine & V-Belts	18		Engine & V-Belts	18	
315E660G000	MTD		315E663G131	TRACTOR SUPPLY	
Wheels.....	3		Wheels.....	3	
Handle Assembly	4, 5		Handle Assembly	10, 11	
Blower Housing.....	12, 13		Blower Housing.....	12, 13	
Frame Assembly	14, 15		Frame Assembly	14, 15	
Engine & V-Belts	18		Engine & V-Belts	18	
315E633E401	YARDMAN		315E641E205	MID STATES	
Wheels.....	3		Wheels.....	3	
Handle Assembly	8, 9		Handle Assembly	6, 7	
Blower Housing.....	12, 13		Blower Housing.....	12, 13	
Frame Assembly	14, 15		Frame Assembly	14, 15	
Engine & V-Belts	17		Engine & V-Belts	18	



WHEEL ASSEMBLIES

Model No.	Size	Ref. No. 1 Wheel Ass'y. Complete	Ref. No. 2 Tire Only	Ref. No. 3 Air Valve	Ref. No. 4 Rim Only	Ref. No. 5 Sleeve Bearing (2)	Ref. No. 6 Klick Pin
315E610E000	13 x 5	734-1714	734-1527	734-0255	734-1713	741-0401	714-0143
315-611D000	13 x 4	634-0114	734-1732	734-0255	734-1713	741-0401	714-0143
615E640F000	16 x 4.8	734-1709	734-1530	734-0255	734-1708	741-0401	714-0143
315-641E000	13 x 5	734-1714	734-1527	734-0255	734-1713	741-0401	714-0143
315E660G000	16 x 6.5	734-1712	734-1525	734-0255	734-1711	741-0401	714-0143
315E661E118	13 x 5	734-1714	734-1527	734-0255	734-1713	741-0401	714-0143
315E633E401	13 x 5	734-1714	734-1527	734-0255	734-1713	741-0401	714-0143
315E611D352	13 x 4	634-0114	734-1732	734-0255	734-1713	741-0401	714-0143
315-613E131	13 x 5	734-1714	734-1527	734-0255	734-1713	741-0401	714-0143
315E643F131	16 x 4.8	734-1709	734-1530	734-0255	734-1708	741-0401	714-0143
315E663G131	16 x 6.5	734-1712	734-1525	734-0255	734-1711	741-0401	714-0143
315E641E205	13 x 5	734-1714	734-1527	734-0255	734-1713	741-0401	714-0143

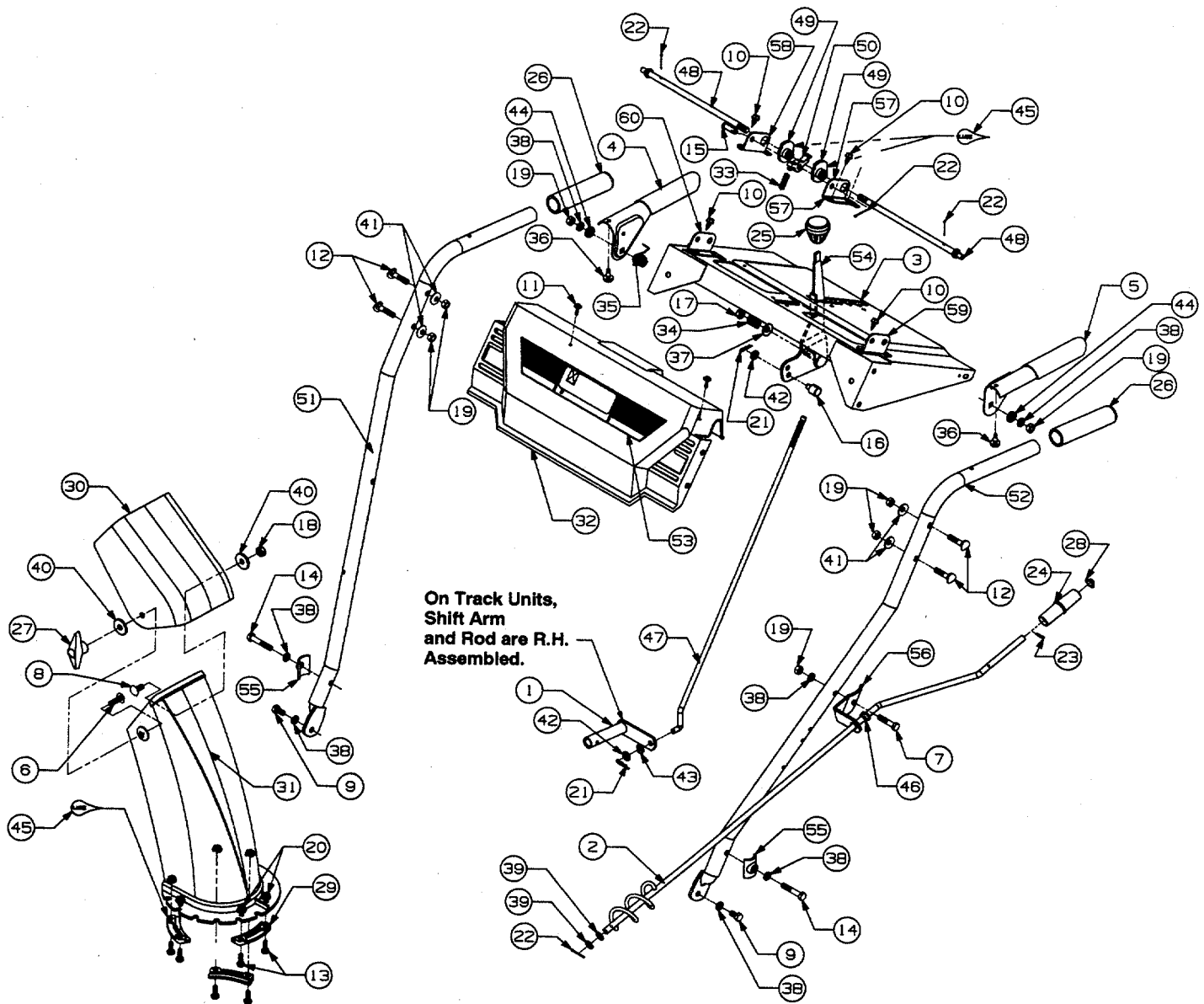
Handle Assembly (831-06168)

Model Nos.

315E610E000

315E640F000

315E660G000



Handle Assembly

Model Nos.

315E610E000

315E640F000

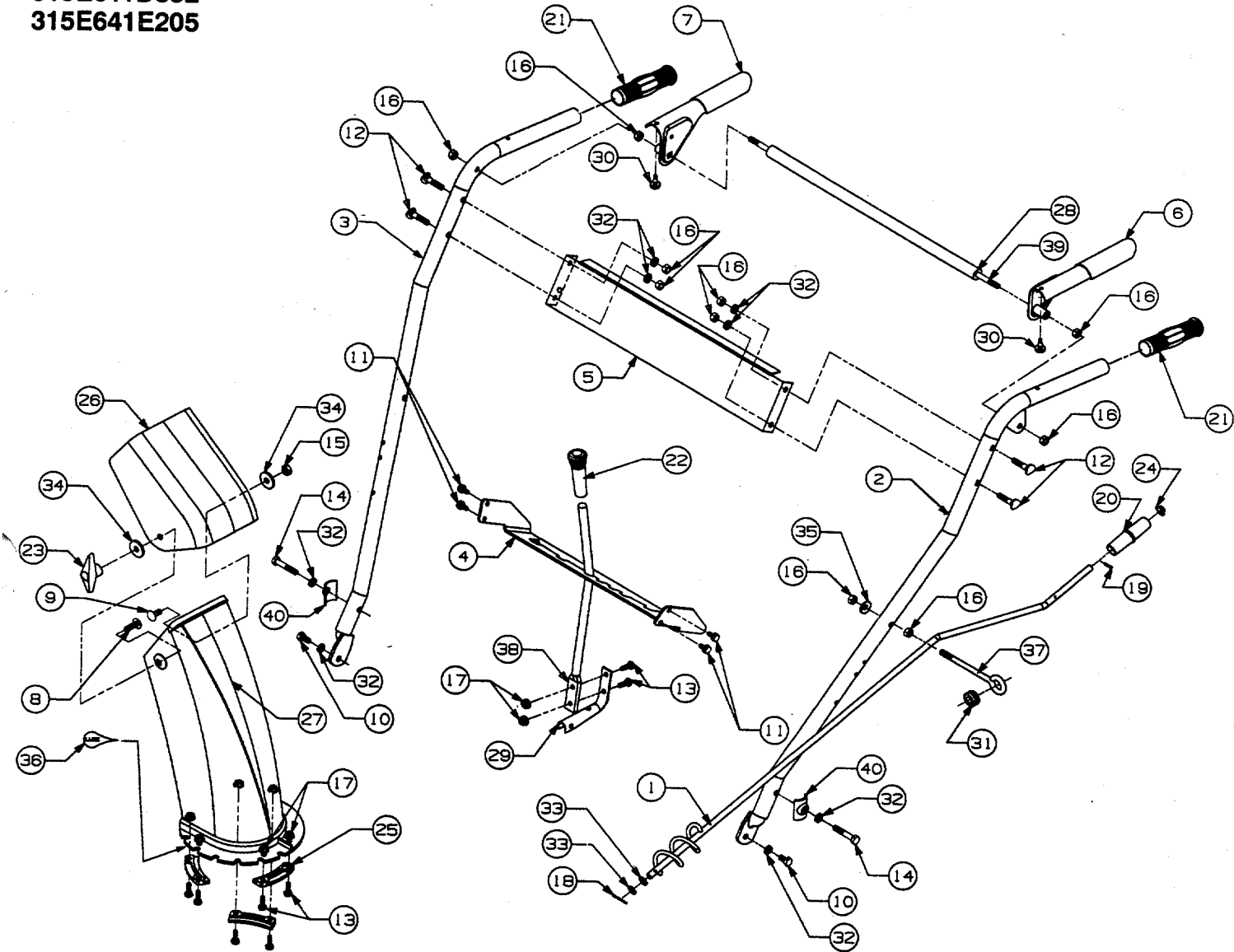
315E660G000

REF. NO.	PART NO.	DESCRIPTION	QTY.	REF. NO.	PART NO.	DESCRIPTION	QTY.
1	684-0008	Arm, Shift	1	31	731-1300A	Lower Chute, 5" Dia. Plastic	1
2	684-0022	Crank, Chute	1	32	731-1391	Panel—Black	1
3	684-0033A	Panel, Handle	1	33	732-0145	Spring	1
4	684-0036	Handle Engagement R.H.—Blk.	1	34	732-0193	Spring	1
5	684-0037	Handle Engagement L.H.—Blk.	1	35	732-0746	Spring	1
6	710-0276	Screw Carriage	1	36	735-0199A	Bumper	2
7	710-0442	Screw, Hex	1	37	736-0105	Washer, Bell	1
8	710-0451	Bolt, Carriage	1	38	736-0119	Lock Washer	7
9	710-0538	Screw, Hex	2	39	736-0140	Flat Washer	2
10	710-0776A	Hex Self-Tap Scr.	4	40	736-0231	Washer	2
11	710-1003	Screw, Hex	2	41	736-0242	Washer, Bell	4
12	710-1250	Bolt, Curved Carriage	4	42	736-0264	Washer, Flat	2
13	710-3015	Hex Cap Screw	6	43	736-0271	Washer, Spring	1
14	710-3180	Hex Screw	2	44	736-0509	Washer	2
15	711-0653	Pin, Clevis	1	45		Lubricant	
16	711-0677	Ferrule, Engagement	1	46	741-0475	Bushing, Plastic	1
17	712-0116	Hex Lock Nut	1	47	747-0798	Rod, Shift	1
18	712-0158	Nut, Hex	1	48	747-0877	Rod, Cam	2
19	712-0267	Nut, Hex	7	49	748-0362	Cam Handle Lock	2
20	712-3027	Nut, Lock, Hex, Flanged 1/4-20	6	50	748-0363	Pawl Handle Lock	1
21	714-0104	Pin, Cotter	2	51	749-0910A	Handle, R.H.	1
22	714-0507	Pin, Cotter	4	52	749-0911A	Handle, L.H.	1
23	715-0138	Roll Pin	1	53	777-2643	Label, MTD	1
24	720-0201A	Knob, Chute Crank	1	54	784-0297	Shift Handle	1
25	720-0232	Knob, Shift	1	55	784-5599	Handle Tab	2
26	720-0274	Grip	2	56	784-5678	Brkt., Chute Crank Reinforce	1
27	720-0284	Knob, L/Wing Nut	1	57	784-5679	Brkt., Handle Support L.H.	1
28	726-0100	Cap, Push	1	58	784-5680	Brkt., Handle Support R.H.	1
29	731-0851A	Chute, Flange Keeper	3	59	784-5681	Brkt., Handle Support L.H.	1
30	731-0921	Chute, Upper 5.0 Dia.	1	60	784-5682	Brkt., Handle Support R.H.	1

Handle Assembly (831-06171)

Model Nos.

315-611D000
315-641E000
315E661E118
315E611D352
315E641E205



Handle Assembly

Model Nos.

315-611D000

315-641E000

315E661E118

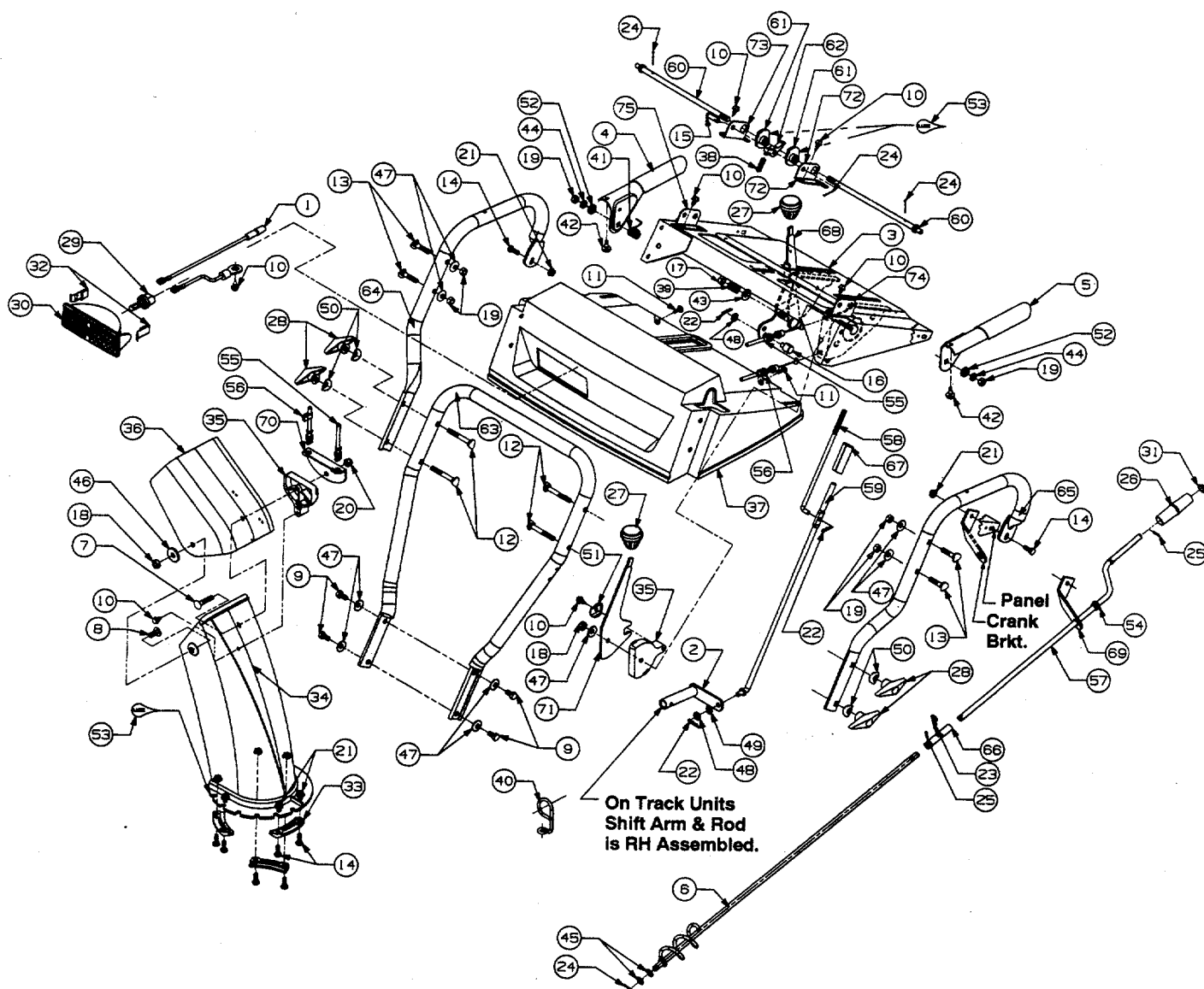
315E611D352

315E641E205

REF. NO.	PART NO.	DESCRIPTION	QTY.	REF. NO.	PART NO.	DESCRIPTION	QTY.
1	684-0022	Crank Chute	1	21	720-0204	Grip	2
2	684-0047	Handle L.H.	1	22	720-0223	Grip	1
3	684-0048	Handle R.H.	1	23	720-0284	Knob, L/Wing Nut	1
4	705-5231	Panel, 5 Speed Selector	1	24	726-0100	Cap, Push	1
5	705-5232	Panel Handle	1	25	731-0851A	Chute, Flange Keeper	3
6	705-5233	Lever, Clutch L.H.	1	26	731-0921	Chute, Upper 5.0 Dia.	1
7	705-5234	Lever, Clutch R.H.	1	27	731-1300A	Lower Chute, 5" Dia. Plastic	1
8	710-0276	Screw, Carriage	1	28	731-1500	Tube, Pivot Rod Cover	1
9	710-0451	Bolt, Carriage	1	29	732-0733	Spring, Shift Lever	1
10	710-0538	Hex Screw	2	30	735-0199A	Bumper	2
11	710-0776A	Screw, Hex	4	31	735-0234	Grommet	1
12	710-1250	Bolt, Curved Carriage	4	32	736-0119	Lock Washer	8
13	710-3015	Hex Screw	8	33	736-0140	Flat Washer	2
14	710-3180	Hex Screw	2	34	736-0231	Washer	2
15	712-0158	Nut, Hex Ctr. Lock	1	35	736-0242	Washer, Bell	1
16	712-0267	Nut, Hex	10	36		Lubricant	
17	712-3027	Nut, Lock, Hex, Flanged	8	37	747-0697	Eyebolt Chute Crank	1
18	714-0507	Pin, Cotter	1	38	747-0904	Shift Lever	1
19	715-0138	Roll Pin	1	39	747-0905	Rod, Pivot	1
20	720-0201A	Knob, Chute Crank	1	40	784-5599	Handle Tab	2

Handle Assembly (831-06172)

Model No.
315E633E401



Handle Assembly

Model No.

315E633E401

REF. NO.	PART NO.	DESCRIPTION	QTY.	REF. NO.	PART NO.	DESCRIPTION	QTY.
1	629-0059	Harness, Snowthrower Light	1	39	732-0193	Spring	1
2	684-0008	Arm, Shift	1	40	732-0705	Cable Control Wire	1
3	684-0032A	Panel, Handle w/Tilt	1	41	732-0746	Spring	1
4	684-0036	Handle, Engagement R.H.	1	42	735-0199A	Bumper	2
5	684-0037	Handle, Engagement L.H.	1	43	736-0105	Washer, Bell	1
6	684-0053	Crank, Chute	1	44	736-0119	Lock Washer	2
7	710-0262	Bolt, Carriage	1	45	736-0140	Flat Washer	2
8	710-0451	Bolt, Carriage	1	46	736-0231	Washer	1
9	710-0538	Hex Screw	4	47	736-0242	Washer, Bell	9
10	710-0776A	Hex Screw	7	48	736-0264	Washer, Flat	2
11	710-1003	Screw, Hex	2	49	736-0271	Washer	1
12	710-1178	Bolt, Curved Carriage	4	50	736-0451	Washer, Saddle	4
13	710-1250	Bolt, Curved Carriage	4	51	736-0506	Washer	1
14	710-3015	Hex Cap Screw	8	52	736-0509	Washer	2
15	711-0653	Pin, Clevis	1	53		Lubricant	
16	711-0677	Ferrule, Engagement	1	54	741-0475	Bushing, Plastic	1
17	712-0116	Hex Lock Nut	1	55	746-0896	Cable, Chute Deflector	1
18	712-0158	Nut, Hex Lock	2	56	746-0901	Cable, Chute Deflector w/Clip	1
19	712-0267	Nut, Hex	6	57	747-0618	Crank, Chute	1
20	712-0429	Hex Ins. L-Nut 5/16-18	1	58	747-0620	Rod, Shift, Upper	1
21	712-3027	Nut, Lock, Hex Flanged	8	59	747-0621	Rod, Shift, Lower	1
22	714-0104	Pin, Cotter	3	60	747-0877	Rod, Cam	2
23	714-0145	Pin, Cotter	1	61	748-0362	Cam Handle Lock	2
24	714-0507	Pin, Cotter	4	62	748-0363	Pawl Handle Lock	1
25	715-0138	Roll Pin	2	63	749-0951	Handle, Lower—Snow	1
26	720-0201A	Knob, Chute Crank	1	64	749-0954	Handle R.H.	1
27	720-0232	Knob, Shift	2	65	749-0955	Handle L.H.	1
28	720-0284	Knob	4	66	750-0785	Spacer	1
29	725-1658	Lamp, Halogen	1	67	750-0963	Connector, Clutch Rod	1
30	725-1672	Housing, Lamp, Lens Assembly	1	68	784-0297	Shift Handle	1
31	726-0100	Cap, Push	1	69	784-0309	Brkt., Chute Crank, Split	1
32	726-0321A	Clip, Retaining	2	70	784-5594	Brkt., Cable	1
33	731-0851A	Chute, Flange Keeper	3	71	784-5604	Handle, Chute Tilt	1
34	731-1300A	Lower Chute, 5" Dia. Plastic	1	72	784-5679	Brkt., Handle Support L.H.—5/8	1
35	731-1313	Cable Guide	2	73	784-5680	Brkt., Handle Support R.H.—5/8	1
36	731-1320	Chute, Upper 5.0 Dia. Remote	1	74	784-5681	Brkt., Handle Support L.H.—3/8	1
37	731-1545	Panel Handle	1	75	784-5682	Brkt., Handle Support R.H.—3/8	1
38	732-0145	Spring	1				

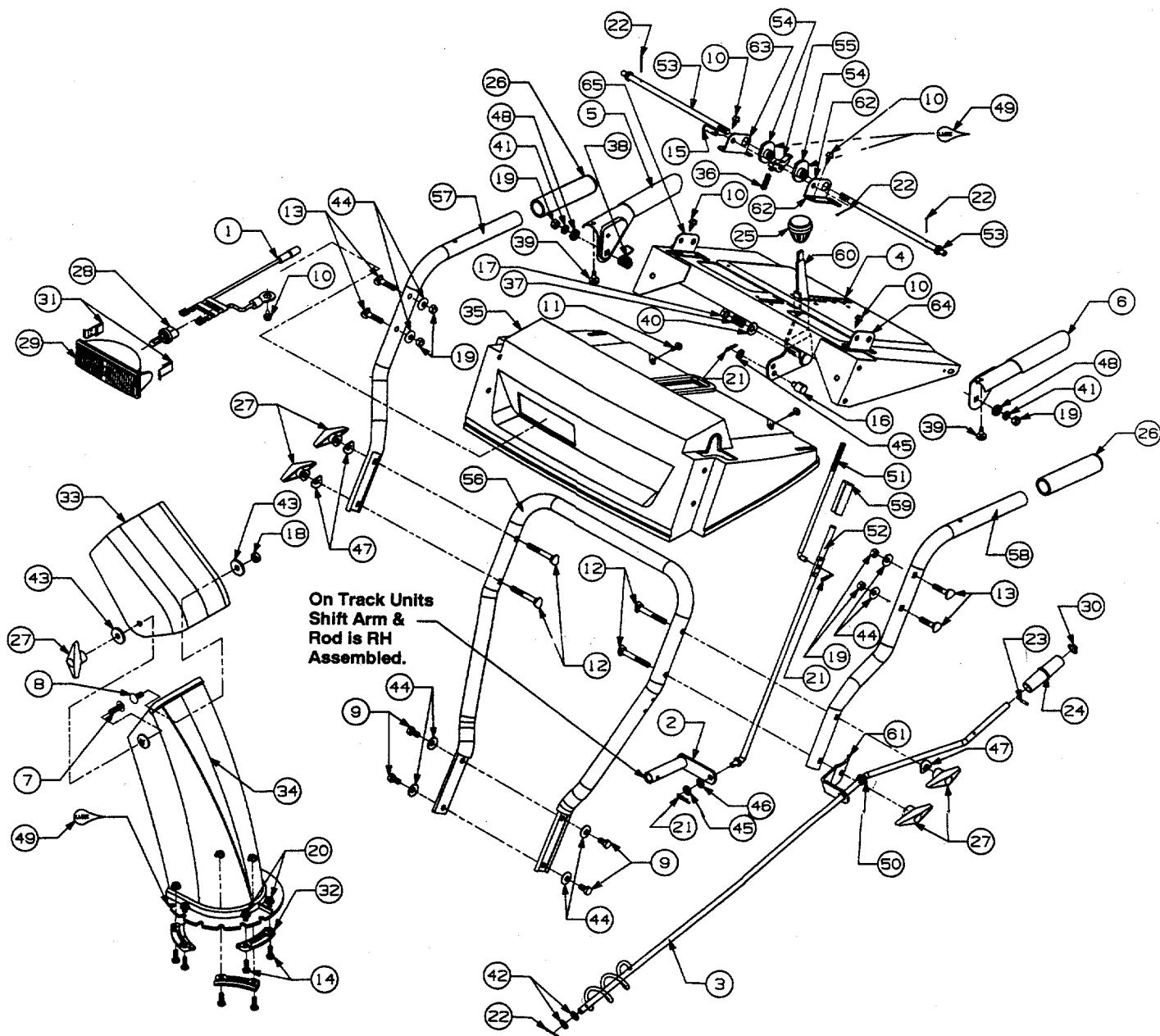
Handle Assembly

Model Nos.

315-613E131 (831-06173)

315E643F131 (831-06174)

315E663G131 (831-06174)



Handle Assembly

Model Nos.

315-613E131

315E643F131

315E663G131

REF. NO.	PART NO.	DESCRIPTION	QTY.	REF. NO.	PART NO.	DESCRIPTION	QTY.
1	629-0059	Harness, Light	1	34	731-1300A	Lower Chute, 5" Dia. Plastic	1
2	684-0008	Arm, Shift	1	35	731-1341	Panel, Handle w/o Tilt w/Light†	1
3	684-0022	Crank, Chute	1		731-1323	Panel, Handle (315-613E131)	
4	684-0033A	Panel, Handle	1	36	732-0145	Spring	1
5	684-0036	Handle, Engagement R.H.	1	37	732-0193	Spring	1
6	684-0037	Handle, Engagement L.H.	1	38	732-0746	Spring	1
7	710-0276	Screw, Carriage	1	39	735-0199A	Bumper	2
8	710-0451	Bolt, Carriage	1	40	736-0105	Washer, Bell	1
9	710-0538	Hex Screw	4	41	736-0119	Lock Washer	2
10	710-0776A	Hex Screw	5	42	736-0140	Flat Washer	2
11	710-1003	Screw, Hex	2	43	736-0231	Washer	2
12	710-1178	Bolt, Curved Carriage	4	44	736-0242	Washer, Bell	8
13	710-1250	Bolt, Curved Carriage	4	45	736-0264	Washer, Flat	2
14	710-3015	Hex Cap Screw	6	46	736-0271	Washer	1
15	711-0653	Pin, Clevis	1	47	736-0451	Washer, Saddle	3
16	711-0677	Ferrule, Engagement	1	48	736-0509	Washer	2
17	712-0116	Hex Lock Nut	1	49		Lubricant	
18	712-0158	Nut, Hex	1	50	741-0475	Bushing, Plastic	1
19	712-0267	Nut, Hex	6	51	747-0620	Rod, Shift, Upper	1
20	712-3027	Nut, Lock, Hex, Flanged	6	52	747-0621	Rod, Shift, Lower	1
21	714-0104	Pin, Cotter	3	53	747-0877	Rod, Cam	2
22	714-0507	Pin, Cotter	4	54	748-0362	Cam Handle Lock	2
23	715-0138	Roll Pin	1	55	748-0363	Pawl Handle Lock	1
24	720-0201A	Knob, Chute Crank	1	56	749-0951	Handle, Lower—Snow	1
25	720-0232	Knob, Shift	1	57	749-0952	Handle, R.H. F-Assembly	1
26	720-0274	Grip	2	58	749-0953	Handle, L.H. F-Assembly	1
27	720-0284	Knob	5	59	750-0963	Connector, Clutch Rod	1
28	725-1658	Lamp, Halogen†	1	60	784-0297	Shift Handle	1
29	725-1672	Housing, Lamp, Lens Ass'y.†	1	61	784-5678	Brkt., Chute Crank Reinforce	1
30	726-0100	Cap, Push	1	62	784-5679	Brkt., Handle Support L.H.	1
31	726-0321A	Clip, Retaining†	2	63	784-5680	Brkt., Handle Support R.H.	1
32	731-0851A	Chute, Flange Keeper	3	64	784-5681	Brkt., Handle Support L.H.	1
33	731-0921	Chute, Upper 5.0 Dia.	1	65	784-5682	Brkt., Handle Support R.H.	1

†Models 315E643F131 and 315E663G131

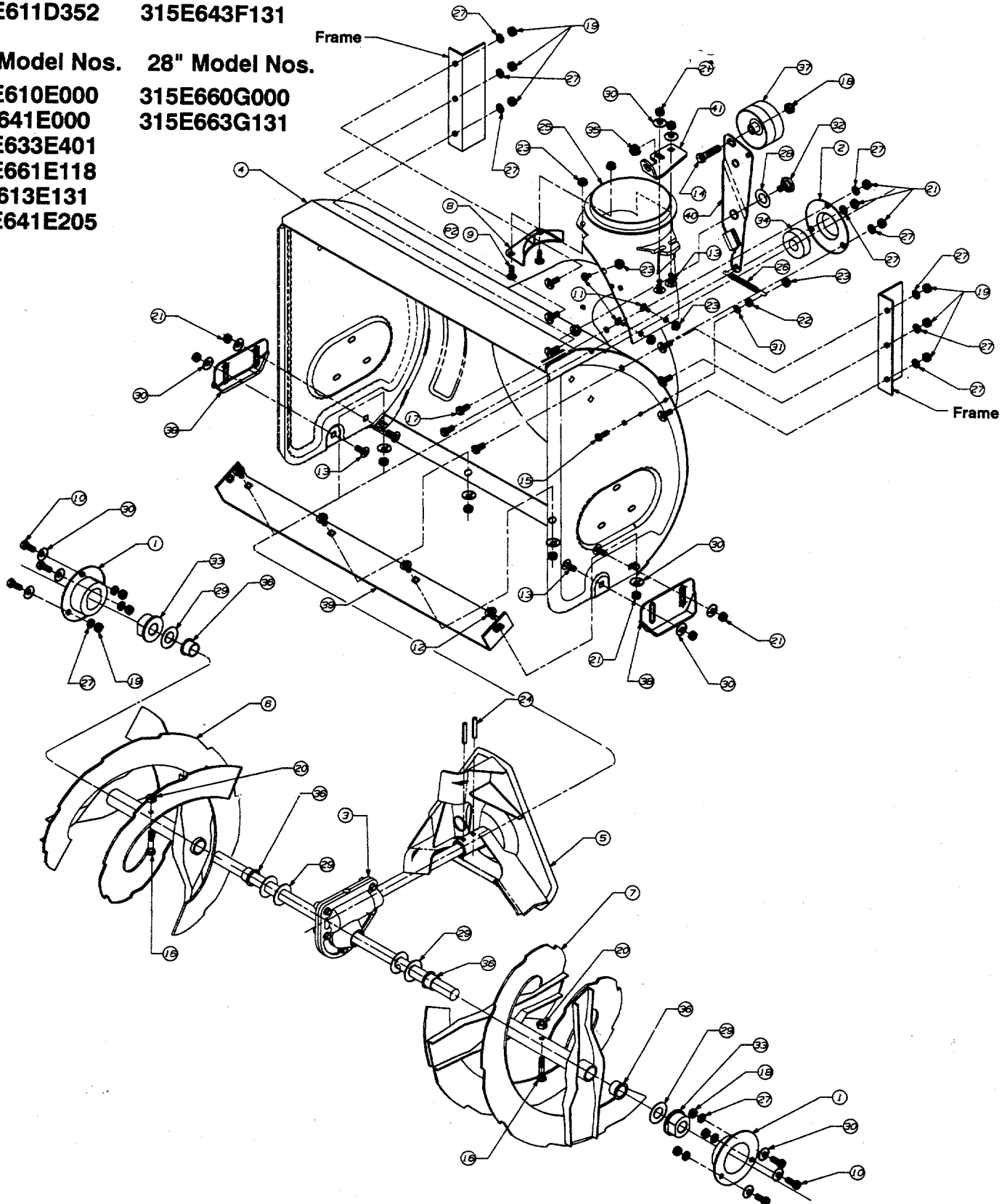
Blower Housing 22" (831-06157), 24" (831-06158), 26" (831-06200), 28" (831-06201)

22" Model Nos. 26" Model Nos.

315-611D000 315E640F000
315E611D352 315E643F131

24" Model Nos. 28" Model Nos.

315E610E000 315E660G000
315-641E000 315E663G131
315E633E401
315E661E118
315-613E131
315E641E205



Blower Housing 22", 24", 26" and 28"

22" Model Nos. 26" Model Nos.
 315-611D000 315E640F000
 315E611D352 315E643F131

24" Model Nos. 28" Model Nos.
 315E610E000 315E660G000
 315-641E000 315E663G131
 315E633E401
 315E661E118
 315-613E131
 315E641E205

REF. NO.	PART NO.	DESCRIPTION	QTY.	REF. NO.	PART NO.	DESCRIPTION	QTY.
1	05845A	Housing, Bearing	2	18	712-0116	Hex Lock Nut	1
2	05931	Housing, Bearing	1	19	712-0123	Hex Nut	12
3	618-0152	Gear Assembly (22" Auger)		20	712-0158	Nut, Hex Lock	3
	618-0120	Gear Assembly (24" Auger)	1	21	712-0267	Nut, Hex	13
	618-0121	Gear Assembly (26" Auger)		22	712-0287	Hex Nut	1
	618-0122	Gear Assembly (28" Auger)		23	712-3027	Nut, Lock, Hex, Flanged	6
4	684-0052	22" Housing Assembly		24	715-0114	Spring Pin	2
	684-0039A	24" Housing Assembly	1	25	731-1379	Adapter, Chute	1
	684-0040A	26" Housing Assembly		26	732-0611	Spring	1
	684-0041A	28" Housing Assembly		27	736-0119	Lock Washer	15
5	705-5187A	Fan Asm, Blower 12"	1	28	736-0167	Washer, Flat	1
6	705-5252	Spiral, 22" R.H.		29	736-0188	Washer, Flat, .76 I.D. x	
	705-5188	Spiral, 24" R.H.	1			1.49 O.D. x .06	6
	705-5192	Spiral, 26" R.H.		30	736-0242	Washer, Bell	16
	705-5196	Spiral, 28" R.H.		31	736-0329	Washer, Lock	1
7	705-5253	Spiral, 22" L.H.		32	738-0281	Screw, Shoulder	1
	705-5189	Spiral, 24" L.H.	1	33	741-0300	Bearing, Flange	2
	705-5193	Spiral, 26" L.H.		34	741-0309	Bearing, Ball	1
	705-5197	Spiral, 28" L.H.		35	741-0475	Bushing, Plastic	1
8	705-5226	Reinforcement, Chute 5.0	1	36	741-0493A	Bushing, Flange	4
9	710-0134	Bolt, Carriage	2	37	756-0178	Idler, Flat	1
10	710-0157	Screw, Hex	6	38	784-5580	Slide	2
11	710-0167	Screw, Carriage	3	39	784-5576	22" Shave Plate	
12	710-0260	Carriage Bolt	4		784-5581A	24" Shave Plate	1
13	710-0451	Screw, Carriage	6		784-5579A	26" Shave Plate	
14	710-0459	Screw, Hex	1		784-5582A	28" Shave Plate	
15	710-0812	Screw, Hex	1	40	784-5632	Arm, Auger Idler	1
16	710-0890	Bolt, Shear	3	41	784-5647	Bracket, Chute Crank	1
17	710-1087	Screw, Hex	3				

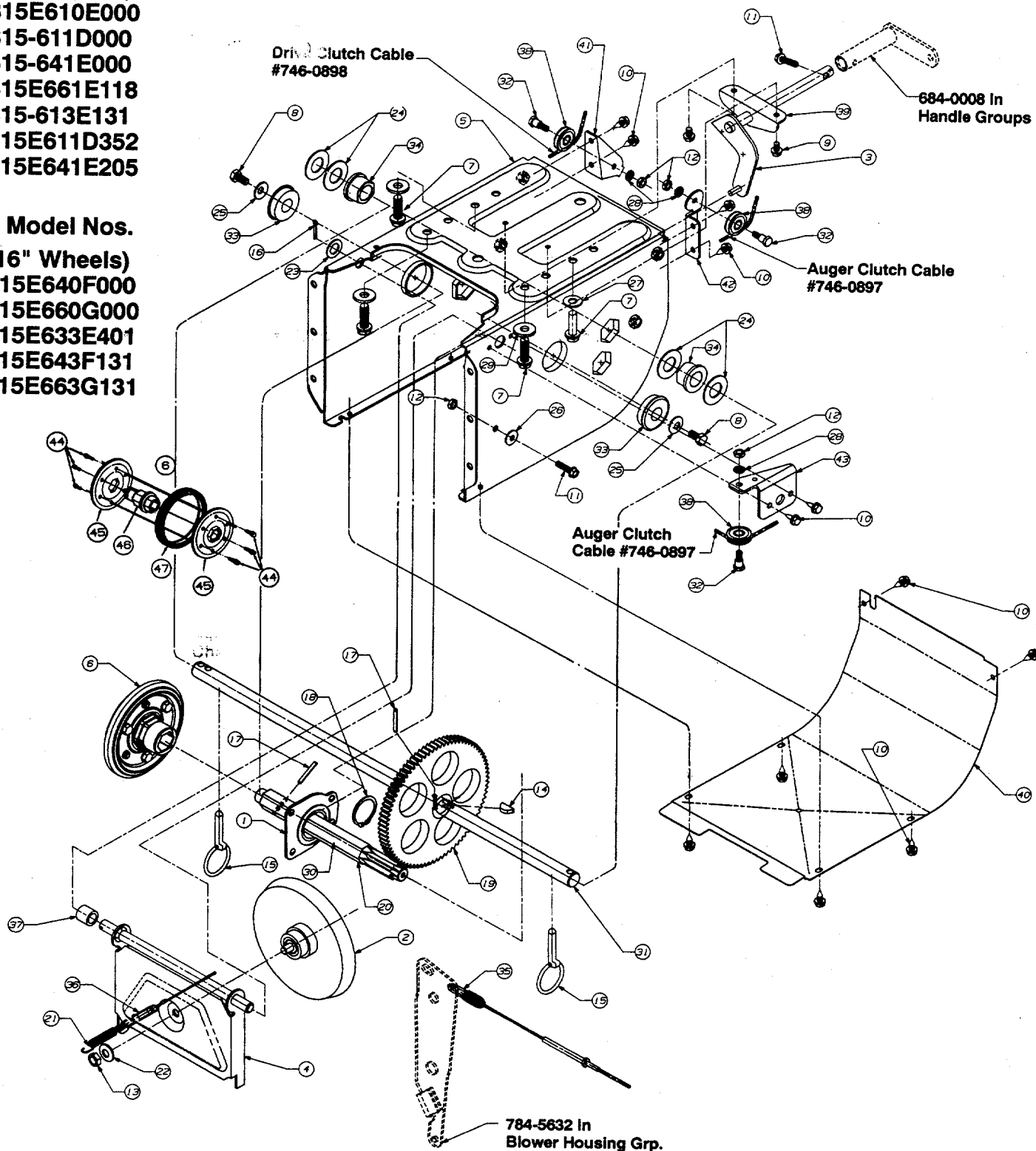
Frame Assembly 13" Wheels (831-0698), 16" Wheels (831-0699)

Model Nos.

(13" Wheels)
 315E610E000
 315-611D000
 315-641E000
 315E661E118
 315-613E131
 315E611D352
 315E641E205

Model Nos.

(16" Wheels)
 315E640F000
 315E660G000
 315E633E401
 315E643F131
 315E663G131



Frame Assembly

Model Nos.	Model Nos.
(13" Wheels)	(16" Wheels)
315E610E000	315E640F000
315-611D000	315E660G000
315-641E000	315E633E401
315E661E118	315E643F131
315-613E131	315E663G131
315E611D352	
315E641E205	

REF. NO.	PART NO.	DESCRIPTION	QTY.	REF. NO.	PART NO.	DESCRIPTION	QTY.
1	618-0063	Bearing Ass'y.	1	26	736-0270	Washer, Bell	1
2	656-0009	Ass'y., Friction Wheel Disc	1	27	736-0300	Flat Washer	1
3	684-0013	Rod Shift, Wheel Drive	1	28	736-0329	Washer, Lock	3
4	684-0021	Brkt. Ass'y. Friction Wheel	1	29	736-3052	Washer, Flat	3
5	684-0030	Frame Ass'y., 600 S/T	1	30		Lubricant	
6	684-0042	Wheel Friction	1	31	738-0869	Axle†	
7	710-0502A	Hex Self-Tap Screw	4	31	738-0830	Axle††	1
8	710-0538	Hex, Screw	2	32	738-0870	Screw, Shoulder	3
9	710-0653	Scr., Hex Wash. Hd., TT 1/4-20 x .3	2	33	741-0563	Bearing, Ball	2
10	710-0776A	Hex Self-Tap Scr.	12	34	741-0598	Flange Bearing	2
11	710-0788	Screw, Hex	2	35	746-0897	Cable, Auger	1
12	712-0298	Nut, Hex	4	36	746-0898	Cable, Clutch	1
13	712-0711	Nut, Hex	1	37	748-0190	Spacer	1
14	714-0126	Key	1	38	756-0625	Roller, Cable	3
15	714-0143	Pin, Klick	2	39	784-5590	Frame, Shift Bracket	1
16	714-0474	Pin, Cotter	1	40	784-5638	Cover, Frame	1
17	715-0249	Pin, Roll	2	41	784-5644	Bracket, Drive Cable Roller	1
18	716-0185	Ring, Retainer	1	42	784-5646	Brkt., Auger Clutch Cable Guide	1
19	717-1414	Gear	1	43	784-5658	Brkt., Front Support Guide	1
20	717-1415A	Shaft, Hex	1	44	710-0599	Hex Wash Hd. TT-Tap Scr. 1/4-20 x .5" Lg.	6
21	732-0264	Extension Spring	1	45	784-5677	Friction Plate	1
22	736-0105	Washer, Bell	2	46	718-0240	Friction Wheel Hub	1
23	736-0160	Flat Washer	1	47	735-0243	Friction Wheel Rubber	1
24	736-0188	Washer, Flat	4				
25	736-0242	Washer, Bell	2				

† Used with 13" Wheels (Models 610, 611, 613, 641, 661)

†† Used with 16" Wheels (Models 633, 640, 643, 660, 663)

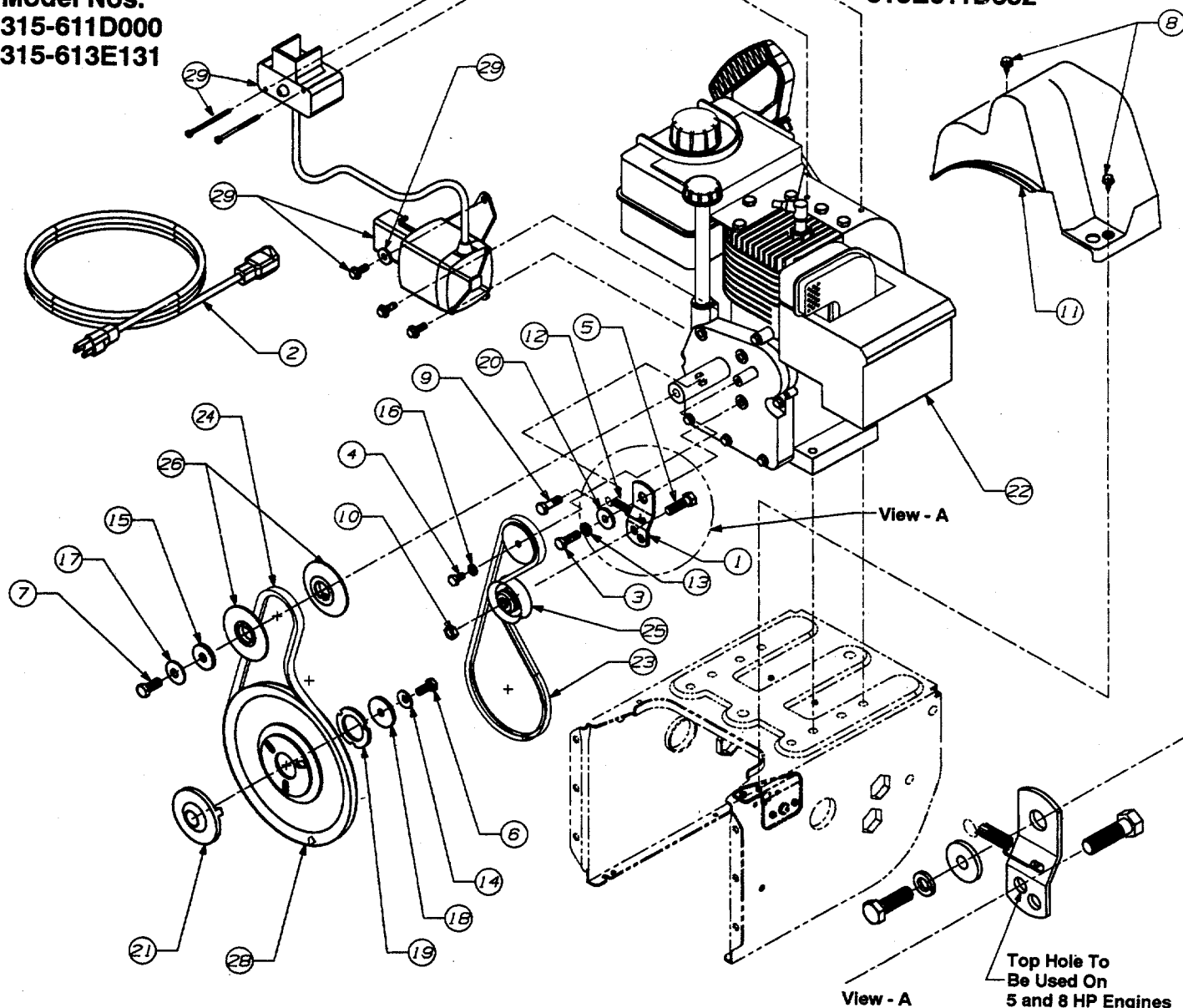
Engine and V-Belts

5 HP (831-06160)

Model Nos.
315-611D000
315-613E131

5 HP With Electric Starter (831-0616)

Model Nos.
315E610E000
315E611D352



REF. NO.	PART NO.	DESCRIPTION	QTY.	REF. NO.	PART NO.	DESCRIPTION	QTY.
1	05896A	Bracket Drive Clutch Idler	1	16	736-0329	Washer, Lock	1
2	629-0071	Cord, Extension†	1	17	736-0331	Washer, Flat	1
3	710-0117	Screw, Hex	1	18	736-0505	Washer, Flat	1
4	710-0230	Hex Screw	1	19	736-0507	Washer	1
5	710-0342	Screw, Hex	1	20	748-0234	Shoulder Spacer	1
6	710-0627	Screw, Hex	1	21	748-0360	Pulley Adapter	1
7	710-0696	Screw, Hex	1	22		Eng., HSK Tec. 5.0 HP Horz.	1
8	710-0776A	Hex Screw	2	23	754-0343	V-Belt	1
9	710-0888	Screw, Hex	1	24	754-0430	V-Belt	1
10	712-0181	Hex Jam Nut	1	25	756-0313	Idler, Flat	1
11	731-1324	Belt Cover	1	26	756-0569	Pulley, Half	2
12	732-0339	Spring	1	27	756-0959	Pulley	1
13	736-0119	Lock Washer	1	28	756-0967	Pulley, Auger	1
14	736-0242	Washer, Bell	1	29	390-986-000	Electric Start Kitt	1
15	736-0247	Washer, Flat	1				

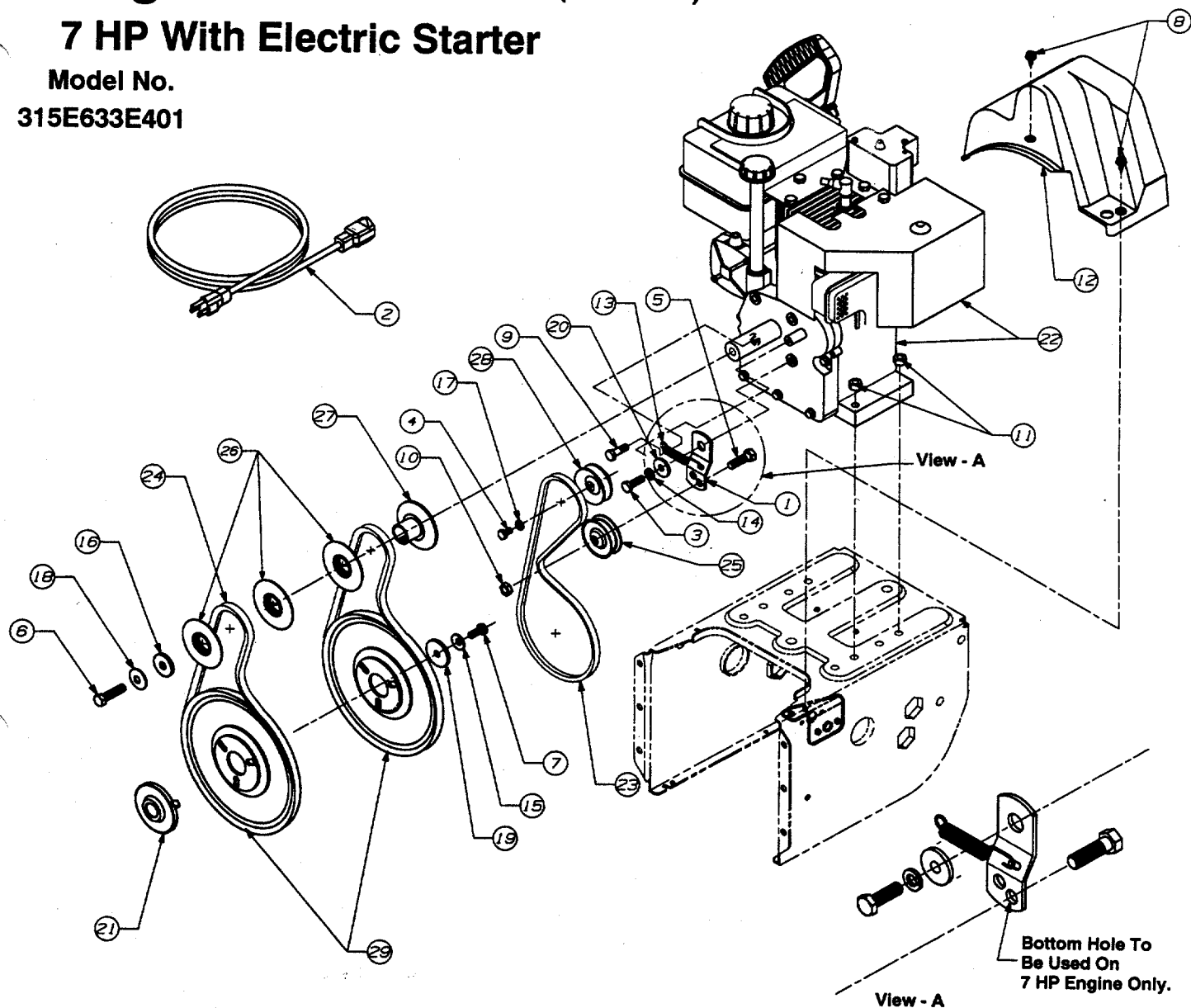
†Electric Start Models Only.

Engine and V-Belts (831-06162)

7 HP With Electric Starter

Model No.

315E633E401



REF. NO.	PART NO.	DESCRIPTION	QTY.	REF. NO.	PART NO.	DESCRIPTION	QTY.
1	05896A	Bracket Drive Clutch Idler	1	16	736-0247	Flat Washer	1
2	629-0071	Cord, Extension	1	17	736-0329	Washer, Lock	1
3	710-0117	Screw, Hex	1	18	736-0331	Washer, Lock	1
4	710-0230	Hex Screw	1	19	736-0505	Washer, Flat	1
5	710-0342	Screw, Hex	1	20	748-0234	Shoulder Spacer	1
6	710-0459	Hex Screw	1	21	748-0360	Pulley Adapter	1
7	710-0627	Screw, Hex	1	22		Eng., HSK70 Tec. 7.0 HP Horz. w/Electric Starter	1
8	710-0776A	Hex Screw	2	23	754-0346	V-Belt	1
9	710-0888	Screw, Hex	1	24	754-0430	V-Belt Matched Set	2
10	712-0181	Hex Jam Nut	1	25	756-0313	Idler, Flat	1
11	712-0798	Nut, Hex	4	26	756-0620	Pulley, Half	3
12	731-1324	Belt, Cover	1	27	756-0621	Pulley, Half	1
13	732-0710	Spring	1	28	756-0959	Pulley	1
14	736-0119	Lock Washer	1	29	756-0967	Pulley, Auger	2
15	736-0242	Washer, Bell	1				

Engine and V-Belts

10 HP With Electric Starter (831-06167)

Model Nos.

315E660G000

315E661E118

315E663G131

8 HP (831-06163)

Model No.

315-641E000

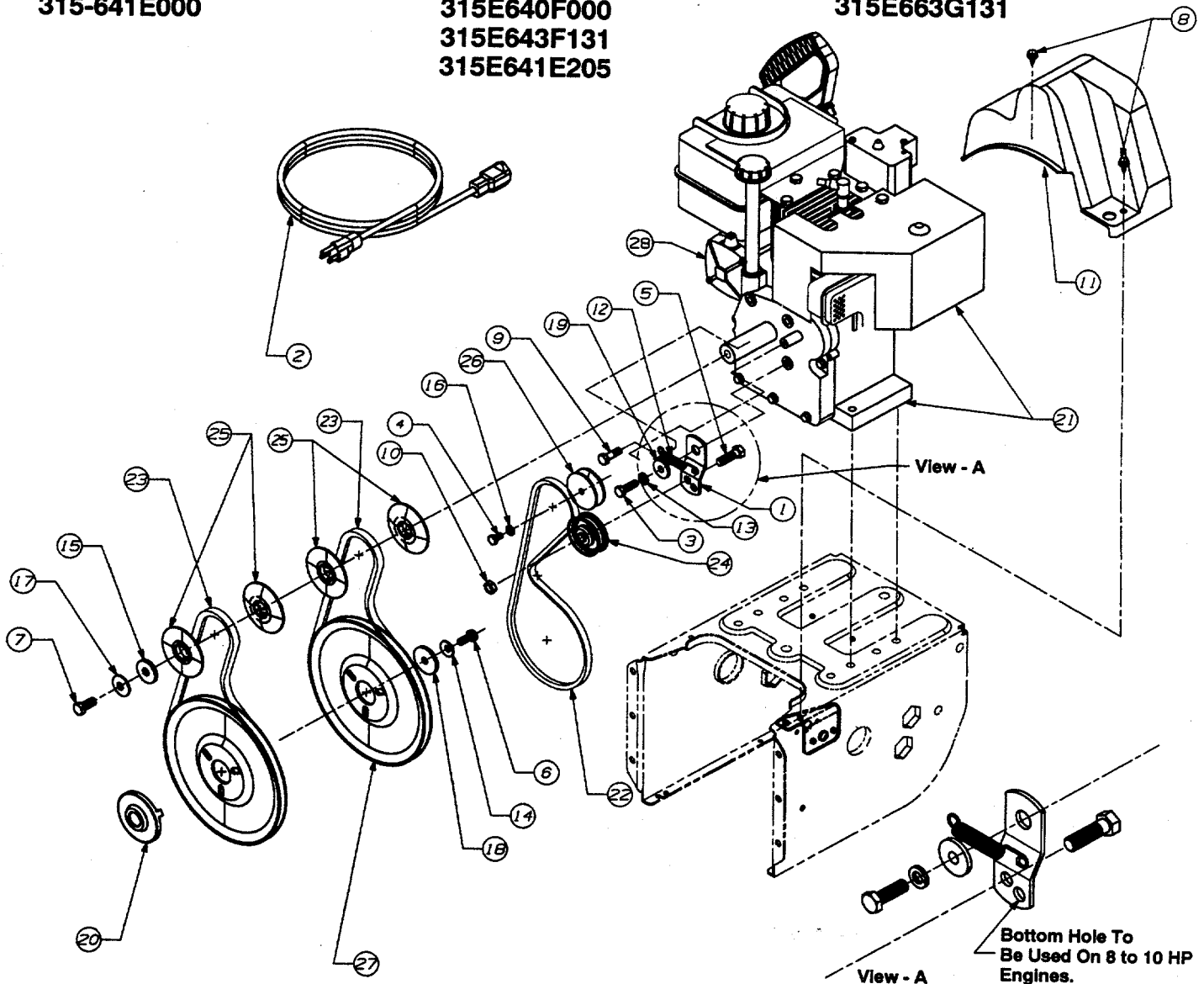
8 HP With Electric Starter (831-06164)

Model Nos.

315E640F000

315E643F131

315E641E205



REF. NO.	PART NO.	DESCRIPTION	QTY.	REF. NO.	PART NO.	DESCRIPTION	QTY.
1	05896A	Bracket Drive Clutch Idler	1	16	736-0329	Washer, Lock	1
2	629-0071	Cord, Extension†	1	17	736-0331	Washer, Bell	1
3	710-0117	Screw, Hex	1	18	736-0505	Washer, Flat	1
4	710-0230	Hex Screw	1	19	748-0234	Shoulder Spacer	1
5	710-0342	Screw, Hex	1	20	748-0360	Pulley, Adapter	1
6	710-0627	Screw, Hex	1	21	—	Eng., HMSK, Tec. 8 H.P., Horz.	1
7	710-0696	Screw, Hex	1	21	—	Eng., HMSK, Tec. 10 HP, Horz.	1
8	710-0776A	Hex Screw	2	22	754-0346	V-Belt	1
9	710-0888	Screw	1	23	754-0430	V-Belt (Matched)	2
10	712-0181	Hex Jam Nut	1	24	756-0313	Idler, Flat	1
11	731-1324	Belt Cover	1	25	756-0569	Pulley, Half	4
12	732-0710	Spring	1	26	756-0959	Pulley	1
13	736-0119	Lock Washer	1	27	756-0967	Pulley, Auger	2
14	736-0242	Washer, Bell	1	28	390-987-000	Electric Start Kit†	1
15	736-0247	Flat Washer	1				

†Electric Start Models Only.

QUICK REFERENCE TO MODEL NUMBERS

Model No.	Brand	Engine	Electric Start	Width	Tires	Tilt Chute	Lights
315-611D000	MTD	Tec. 5 HP	No	22"	13 x 4	No	No
315-641E000	MTD	Tec. 8 HP	No	24"	13 x 5	No	No
315E610E000	MTD	Tec. 5 HP	Yes	24"	13 x 5	No	No
315E640F000	MTD	Tec. 8 HP	Yes	26"	16 x 4.8	No	No
315E660G000	MTD	Tec. 10 HP	Yes	28"	16 x 6.5	No	No
315E633E401	YM	Tec. 7 HP	Yes	24"	16 x 4.8	Yes	Yes
315E661E118	SAMS	Tec. 10 HP	Yes	24"	13 x 5	No	No
315E611D352	W*M	Tec. 5 HP	Yes	22"	13 x 4	No	No
315-613E131	TS	Tec. 5 HP	No	24"	13 x 5	No	No
315E643F131	TS	Tec. 8 HP	Yes	26"	16 x 4.8	No	Yes
315E663G131	TS	Tec. 10 HP	Yes	28"	16 x 6.5	No	Yes
315E641E205	MID STATES	Tec. 8 HP	Yes	24"	13 x 5	No	No

SNOW THROWER ACCESSORIES

Stock No.	Description	Unit Pack	Shelf Master Pack	Stock No.	Description	Unit Pack	Shelf Master Pack
OEM-390-062	Tire Chains 13" x 4.1". Fits model 611D with Sno Hog tires. O.E. #390-062. Packaged 2 per box.	2/bx.	1/1	OEM-390-255	Electric Light Kit. Fits all MTD 2-stage snow throwers. O.E. #390-255. Packaged 1 per box.	1/bx.	1/1
OEM-390-139	Tire Chains 13" x 5". Fits model 550 series snow throwers without Sno Hog tires. O.E. #390-142. Packaged 2 per box.	2/bx.	1/1	OEM-390-679	Drift Cutter Kit. Fits all MTD 2-stage snow throwers. O.E. #390-679. Packaged 2 per box.	2/bx.	1/1
OEM-390-142	Tire Chains 13" x 5". Fits models E620E & 631E with Sno Hog tires. O.E. #390-139. Packaged 2 per box.	2/bx.	1/1	OEM-390-986	Electric Start Kit. Fits MTD snow throwers with 4 HP & 5 HP Tecumseh 4-cycle engines. O.E. #390-986. Packaged 1 per box.	1/bx.	1/1
OEM-390-143	Tire Chains 10.5" x 3.5". Fits 450 series snow throwers without Sno Hog tires. O.E. #390-143. Packaged 2 per box.	2/bx.	1/1	OEM-390-996	Electric Start Kit. Fits MTD snow throwers with 4.5 HP Tecumseh 2-cycle engines. O.E. #390-996. Packaged 1 per box.	1/bx.	1/1
OEM-390-145	Tire Chains 15" x 6". Fits 586 & 840 series snow throwers without Sno Hog tires. O.E. #390-145. Packaged 2 per box.	2/bx.	1/1	OEM-390-987	Electric Start Kit. Fits MTD snow throwers with 8 HP & 10 HP Tecumseh 4-cycle engines. O.E. #390-987. Packaged 1 per box.	1/bx.	1/1
OEM-390-146	Tire Chains 16" x 6.5". Fits 900 series snow throwers without Sno Hog tires. O.E. #390-146. Packaged 2 per box.	2/bx.	1/1	OEM-390-674	Snow Thrower Snow Cab. Heavy-duty vinyl snow cab fits all MTD 2-stage snow throwers. O.E. #390-674. Packaged 1 per box.	1/bx.	1/1
OEM-390-655	Tire Chains 16.5" x 6.5". Fits E660G & E980I series snow throwers with Sno Hog tires. O.E. #390-655. Packaged 2 per box.	2/bx.	1/1	OEM-737-0325	MTD 2-Cycle Snow Thrower Oil - 6 Pack. 50:1 ratio, smokeless, fuel stabilizer, low ash formula. Contains six 2.6 oz. bottles. O.E. #737-0325.	6/pk.	6/48
OEM-390-991	Tire Chains 16" x 4.8". Fits model E640F with Sno Hog tires. O.E. #390-991. Packaged 2 per box.	2/bx.	1/1				

COLOR CHART

Model No.	Brand	Color	Part No.	Color	Part No.
315-611D000	MTD	Red	788-0638	Oyster Gray	788-0662
315-641E000	MTD	Red	788-0638	Oyster Gray	788-0662
315E610E000	MTD	Red	788-0638	Oyster Gray	788-0662
315E640F000	MTD	Red	788-0638	Oyster Gray	788-0662
315E660G000	MTD	Red	788-0638	Oyster Gray	788-0662
315E633E401	YM	Yellow	788-0436	Green	788-0665
315E611D352	W*M	Red	788-0638	Oyster Gray	788-0662
315E661E118	SAMS	Red	788-0638		
315-613E131	TS	Red	788-0638		
315E643F131	TS	Red	788-0638		
315E663G131	TS	Red	788-0638		
315E641E205	Mid States	Red	788-0638		