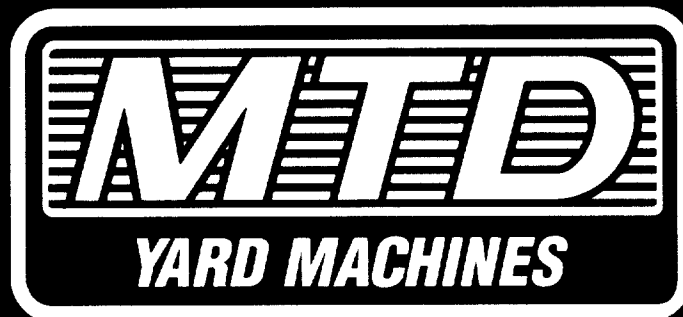


ILLUSTRATED PARTS

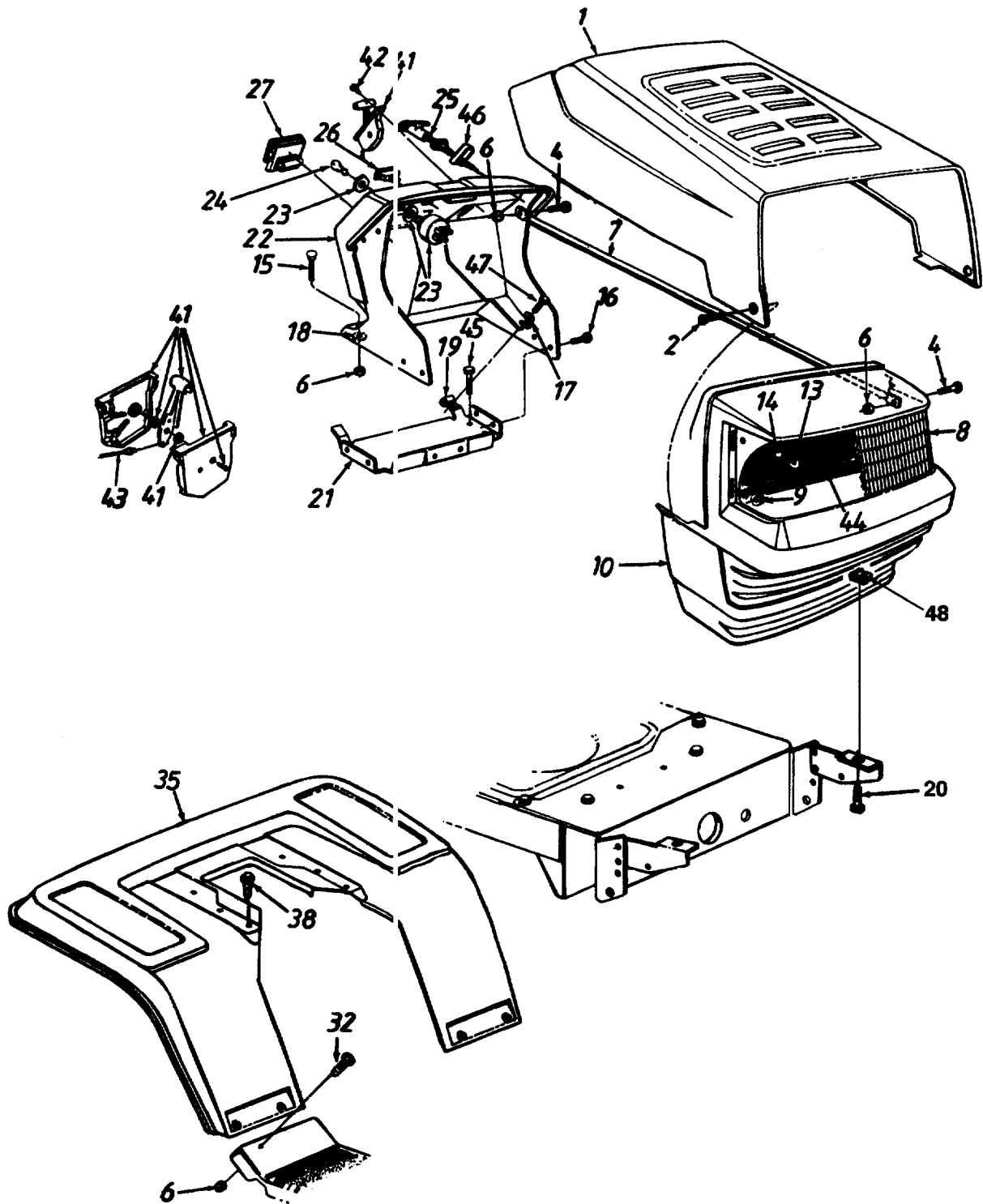
AMERICAN  AMERICAN
M A D E O W N E D
OUTDOOR POWER EQUIPMENT



1996

**Hydrostatic
Lawn Tractors
690-699 Series**

Style 0



Style 0

PARTS LIST FOR MODEL 690 LAWN TRACTOR

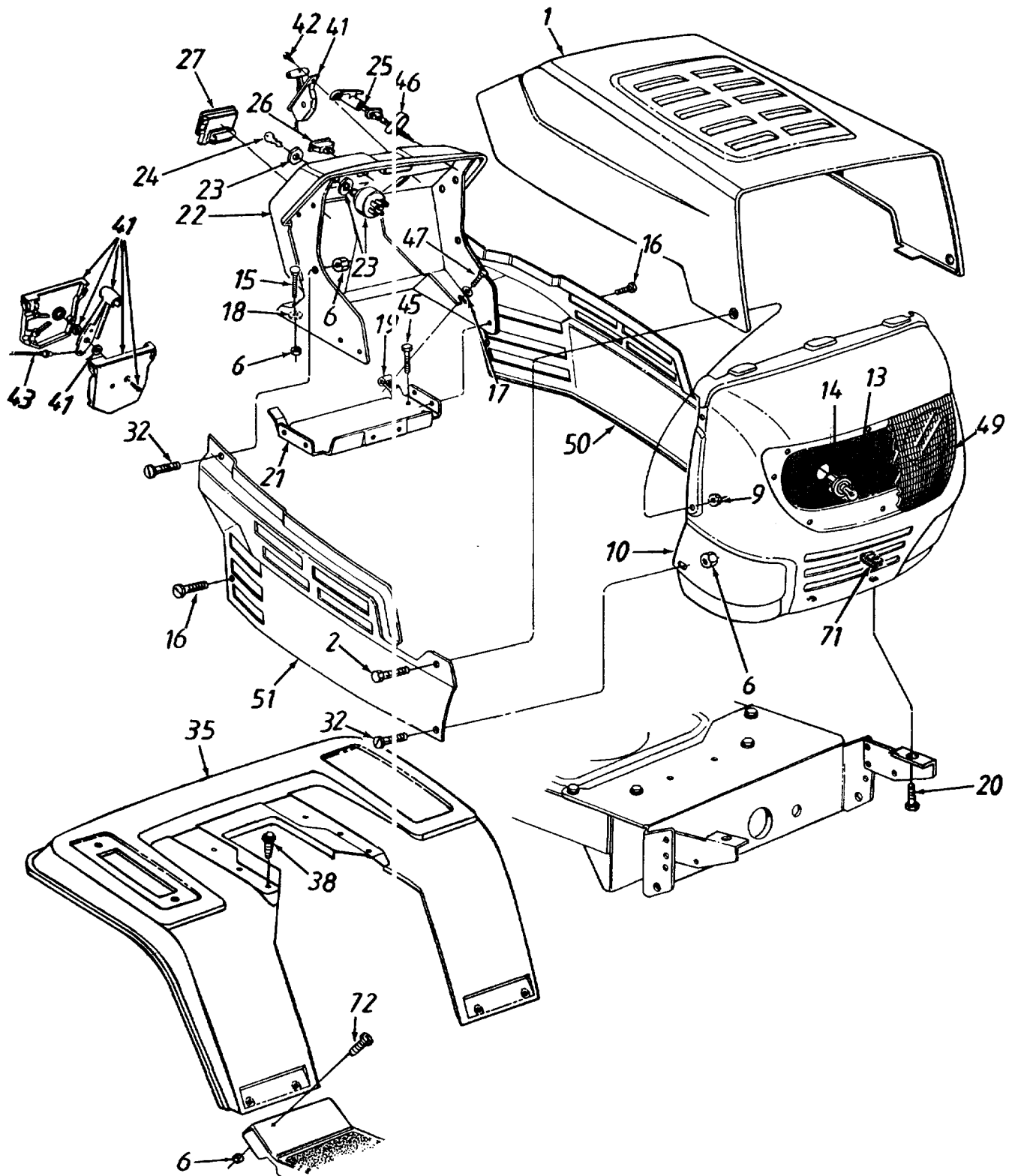
REF. NO.	PART NO.	CODE	DESCRIPTION	REF. NO.	PART NO.	CODE	DESCRIPTION
1	783-0250	N	Hood	26	725-0634	N	Light Switch**
2	738-0952		Shld. Bolt .375" Dia. x .125" Lg.	27	725-0925		Ammeter**
4	710-0258		Hex Bolt 1/4-20 x .62" Lg.*	32	710-0286		Truss Mach. Scr. 1/4-20 x .5" Lg.
6	712-0271		Hex Sems Nut 1/4-20 Thd.	35	17871B		Fender w/Cutout
7	749-0812		Grille Support Rod	38	710-0726		Hex Wash. Hd. AB-Tap Scr.
8	731-1099A		Headlight Lens				5/16 x .75" Lg.
9	712-3027		Flange L-Nut 1/4-20 Thd.	41	831-0823A		Throttle Box Ass'y.
10	731-1097D		Grille	42	710-0779A		Truss Mach. AB-Tap Scr.
13	725-0963		Lamp				#10 x .5" Lg.
14	725-1649		Socket	43	746-0776		Throttle Control Wire†
15	710-0703		Carriage Bolt 1/4-20 x .75" Lg.		746-0634		Throttle Control Wire††
16	710-0599		Hex Wash. Hd. TT-Tap Scr.		746-0638		Throttle Control Wire (Tec.)
			1/4-20 x .5" Lg.	44	777-9206		Grille Reflector Label
17	736-0173		Fl-Wash. .281" I.D. x .73" O.D.	45	710-0603		Hex Wash. Hd. B-Tap Scr.
18	726-0233		Bolt Retainer 1/4" I.D.				5/16-18 x .5" Lg.
19	712-0185		Speed Nut 1/4-20 Thd.	46	17782		Choke Retainer
20	710-0118		Hex Bolt 5/16-18 x .75" Lg.	47	710-0642		Hex TT-Tap Scr. 1/4-20 x .75" Lg.
21	17632A		Gas Tank Support Brkt.	48	726-0211		U-Nut 5/16-18 Thd.
22	731-1096B		Dash w/Ammeter Hole	—	629-0308		Headlight Harness (Not Shown)
	731-1337A		Dash w/o Ammeter Hole				
23	725-0267		Ignition Switch				
24	725-0201		Ignition Key				
25	746-0616A		Choke Control†				
	746-0614A		Choke Control††				
	746-0720		Choke Control (Tec.)				
	746-3021		Choke Control (Vanguard & O.H.V.)				

** Optional Parts

† Used w/Single Cylinder Engine Only.

†† Used w/Twin Cylinder Engine Only.

Style 3



Style 3

PARTS LIST FOR MODEL 693 LAWN TRACTOR

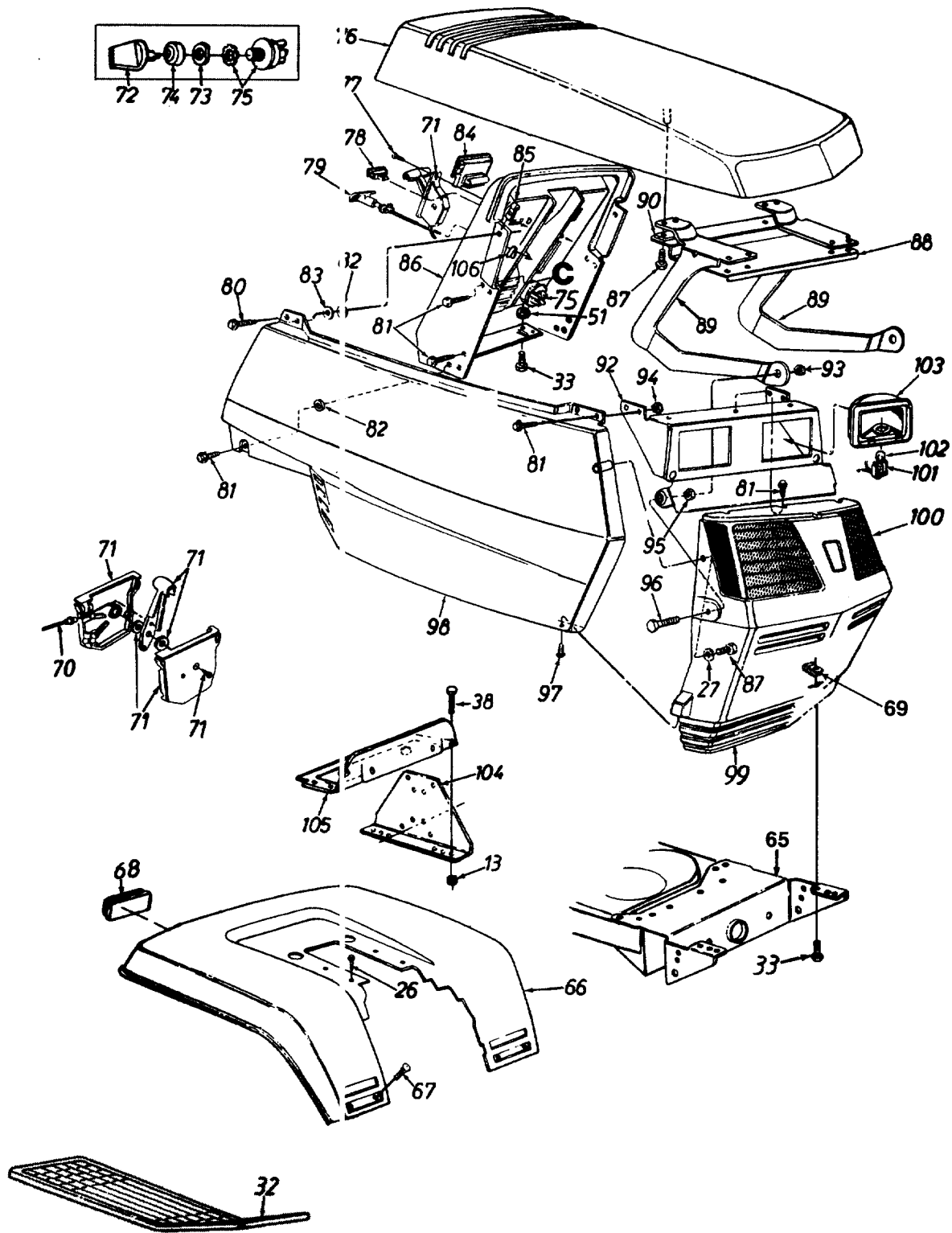
REF. NO.	PART NO.	CODE	DESCRIPTION	REF. NO.	PART NO.	CODE	DESCRIPTION
1	783-0250	N	Hood	26	725-0634	N	Light Switch**
2	738-0952		Shld. Bolt .375" Dia. x .125" Lg.	27	725-0925		Ammeter**
6	712-0271		Hex Sems Nut 1/4-20 Thd.	32	710-0286		Truss Mach. Scr. 1/4-20 x .5" Lg.
9	712-3027		Flange L-Nut 1/4-20 Thd.	35	17871B		Fender
10	783-0156A		Grille	38	710-0726		Hex Wash. Hd. AB-Tap Scr.
13	725-0963		Lamp				5/16 x .75" Lg.
14	725-1651		Socket	41	831-0823A		Throttle Box Ass'y.
15	710-0703		Carriage Bolt 1/4-20 x .75" Lg.	42	710-0779A		Truss Mach. AB-Tap Scr.
16	710-0599		Hex Wash. Hd. TT-Tap Scr.				#10 x .5" Lg.
			1/4-20 x .5" Lg.	43	746-0776		Throttle Control Wire†
17	736-0173		Fl-Wash. .281" I.D. x .73" O.D.		746-0634		Throttle Control Wire††
18	726-0233		Bolt Retainer 1/4" I.D.		746-0638		Throttle Control Wire (Tec.)
19	712-0185		Speed Nut 1/4-20 Thd.	45	710-0603		Hex Wash. Hd. B-Tap Scr.
20	710-0118		Hex Bolt 5/16-18 x .75" Lg.				5/16-18 x .5" Lg.
21	17632A		Gas Tank Support Brkt.	46	17782		Choke Retainer
22	731-1096B		Dash w/Ammeter Hole	47	710-0642		Hex TT-Tap Scr. 1/4-20 x .75"
	731-1337A		Dash w/o Ammeter Hole				Lg.
23	725-0267	N	Ignition Switch	49	731-1503A	N	Lens
24	725-0201		Ignition Key	50	783-0151		Side Panel—L.H.
25	746-0616A		Choke Control†	51	783-0150A		Side Panel—R.H.
	746-0614A		Choke Control††	71	726-0211		U-Nut 5/16-18 Thd.
	746-3021		Choke Control (Vanguard & O.H.V.)	—	629-0309		Headlight Harness (Not Shown)
	746-0720		Choke Control (Tec.)				

** Optional Parts

† Used w/Single Cylinder Engine Only.

†† Used w/Twin Cylinder Engine Only.

Style 4



Style 4

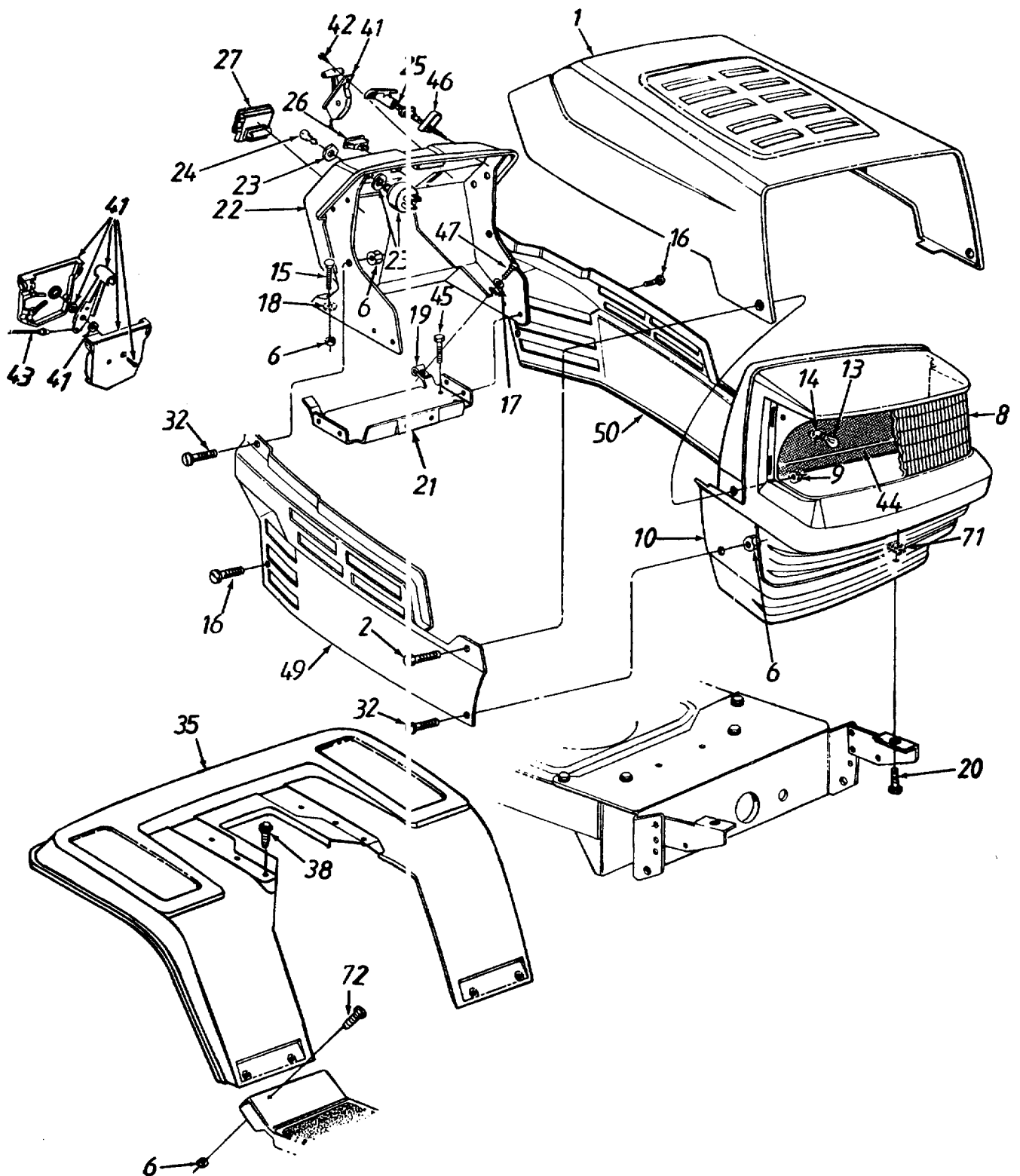
PARTS LIST FOR MODEL 694 LAWN TRACTOR

REF. NO.	PART NO.	CODE	DESCRIPTION	REF. NO.	PART NO.	CODE	DESCRIPTION
13	712-0271		Hex Sems Nut 1/4-20 Thd.	80	710-0642		Hex Wash. Hd. Tap Scr.
26	710-0726		Hex Wash. Hd. AB-Tap Scr.				1/4 x .75" Lg.
			5/16 x .75" Lg.	81	710-0599		Hex Tap Scr. 1/4-20 x .5" Lg.
27	736-0142		Fl-Wash. .218" I.D. x .5" O.D.	82	726-0233		Push Nut Fastener
32	731-0911		Rubber Foot Pad—L.H.	83	736-0176		Fl-Wash. .27" I.D. x .948"
			(Optional)	84	725-0925		Ammeter
	731-0912		Rubber Foot Pad—R.H.	85	712-0185		Speed Nut 1/4-20 Thd.
			(Optional)	86	731-0961A		Dash Panel
33	710-0118		Hex Bolt 5/16-18 x .75" Lg.*	87	710-1005		Hex Wash. Hd. B-Tap Scr.
38	710-0258		Hex Bolt 1/4-20 x .62" Lg.*				1/4 x .75" Lg.
51	712-0265		Hex Sems Nut 5/16-18 Thd.	88	783-0121		Hood Reinforcement
65	783-0041A		Pivot Bar Brkt.	89	783-0123		Hood Hinge
66	783-0350		Fender	90	17762		Hood Reinforcement Spacer
67	710-0167		Carriage Bolt 1/4-20 x .62" Lg.	92	17223		Light Bracket
68	725-3000		Reflector (Optional)	93	712-0158		Hex L-Nut 5/16-18 Thd.
69	726-0211		U-Nut 5/16-18 Thd.	94	712-0107		Hex L-Nut 1/4-20 Thd.
70	746-0776		Throttle Wire 18.5" Lg.†	95	712-3007		Hex Jam Nut 5/16-18 Thd.
	746-0634		Throttle Wire 35" Lg.††	96	710-3038		Hex Bolt 5/16-18 x 7/8" Lg.
	746-0636		Throttle Wire 28" Lg.	97	710-0351		Truss Mach. B-Tap Scr.
			(Kohler Engine)				#10 x .5" Lg.
71	831-0823A		Throttle Control Box Ass'y.	98	731-1434		Side Cover—R.H.
72	725-1341B		Ignition Key		731-1435		Side Cover—L.H. (Not Shown)
73	725-1346		Ignition Switch Nut	99	731-1442A		Grille
74	725-1347		Ignition Switch Cap	100	731-0949		Lens—L.H.
75	725-1396		Ignition Switch		731-0948		Lens—R.H.
76	731-1433		Hood	101	725-1650		Twist Lock—Lamp Socket
77	710-0779A		Truss Mach. AB-Tap Scr. #10 x	102	725-0963		Lamp
			.5" Lg.	103	731-0705		Headlight Housing
78	725-0634		Light Switch	104	17300D		Dash Support Brkt.
79	746-3021		Choke Control (Single Cylinder	105	17633A		Support Brkt.
			and Kohler Engine)	106	17782		Choke Retainer
	746-0614A		Choke Control††				

†Used with Single Cylinder Engine Only.

††Used with Twin Cylinder Engine Only.

Style 5



Style 5

PARTS LIST FOR MODEL 695 LAWN TRACTOR

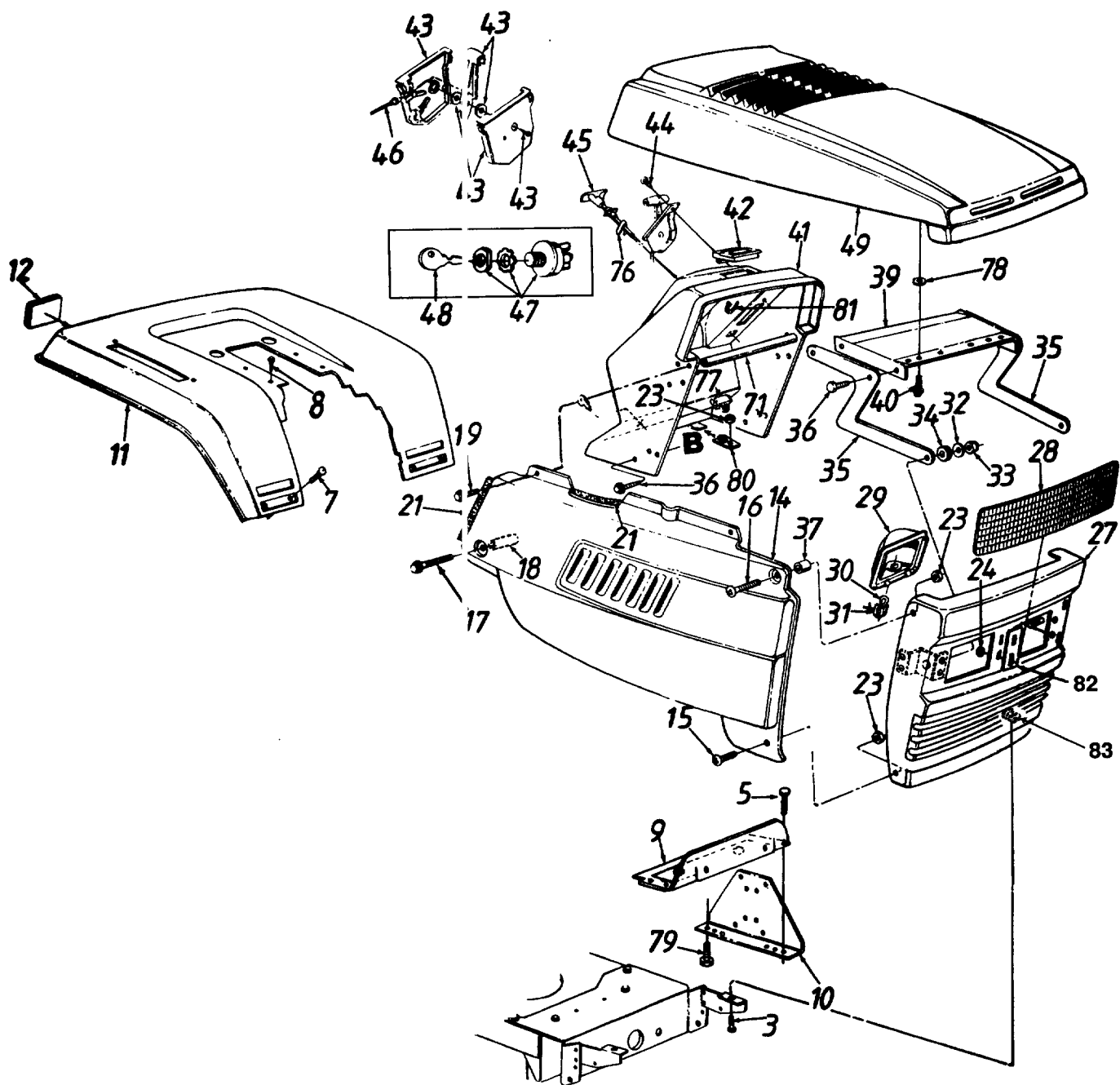
REF. NO.	PART NO.	CODE	DESCRIPTION	REF. NO.	PART NO.	CODE	DESCRIPTION
1	783-0250	N	Hood	26	725-0634	N	Light Switch**
2	738-0952		Shld. Bolt .375" Dia. x .125" Lg.	27	725-0925		Ammeter**
6	712-0271		Hex Sems Nut 1/4-20 Thd.	32	710-0286		Truss Mach. Scr. 1/4-20 x .5" Lg.
8	731-1099A		Headlight Lens	35	17871B		Fender w/Cutout
9	712-3027		Flange L-Nut 1/4-20 Thd.	38	710-0726		Hex Wash. Hd. AB-Tap Scr. 5/16 x .75" Lg.
10	731-1097D		Grille	41	831-0823A		Throttle Box Ass'y.
11	736-3078		Fl-Wash. .344" I.D. x 1" O.D.	42	710-0779A		Truss Mach. AB-Tap Scr. #10 x .5" Lg.
12	712-0267		Hex Nut 5/16-18 Thd.*	43	746-0776		Throttle Control Wire†
13	725-0963		Lamp		746-0634		Throttle Control Wire††
14	725-1649		Socket		746-0638		Throttle Control Wire (Tec.)
15	710-0703		Carriage Bolt 1/4-20 x .75" Lg.	44	777-9206		Grille Reflector Label
16	710-0599		Hex Wash. Hd. TT-Tap Scr. 1/4-20 x .5" Lg.	45	710-0603		Hex Wash. Hd. B-Tap Scr. 5/16-18 x .5" Lg.
17	736-0173		Fl-Wash. .281" I.D. x .73" O.D.	46	17782		Choke Retainer
18	726-0233		Bolt Retainer 1/4" I.D.	47	710-0642		Hex TT-Tap Scr. 1/4-20 x .75" Lg.
19	712-0185		Speed Nut 1/4-20 Thd.	49	783-0150A		Side Panel—R.H.
20	710-0118		Hex Bolt 5/16-18 x .75" Lg.	50	783-0151		Side Panel—L.H.
21	17632A		Gas Tank Support Brkt.	71	726-0211		U-Nut 5/16-18 Thd.
22	731-1096B		Dash w/Ammeter Hole	—	629-0308		Headlight Harness (Not Shown)
	731-1337A		Dash w/o Ammeter Hole				
23	725-0267		Ignition Switch				
24	725-0201		Ignition Key				
25	746-0616A		Choke Control†				
	746-0614A		Choke Control††				
	746-3021		Choke Control (Vanguard & O.H.V.)				
	746-0720		Choke Control (Tec.)				

** Optional Parts

† Used w/Single Cylinder Engine Only.

†† Used w/Twin Cylinder Engine Only.

Style 9



Style 9

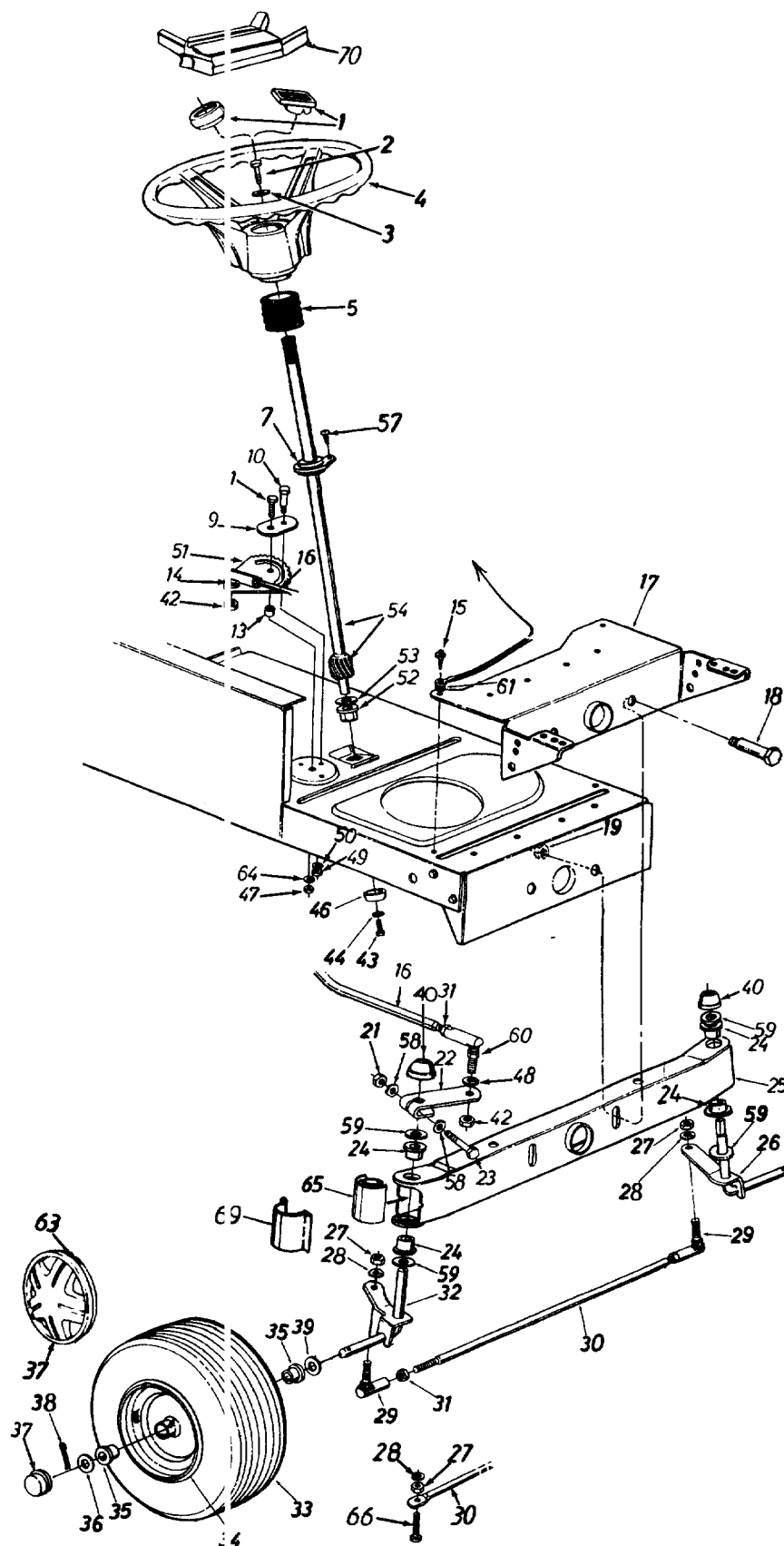
PARTS LIST FOR MODEL 699 LAWN TRACTOR

REF. NO.	PART NO.	CODE	DESCRIPTION	REF. NO.	PART NO.	CODE	DESCRIPTION
3	710-0118		Hex Bolt 5/16-18 x .75" Lg.	36	710-0599		Hex Wash. Hd. B-Tap Scr.
5	710-0603		Hex Wash. Hd. Scr. 5/16" x .5" Lg.	37	750-0218		1/4-20 x .5" Lg.
7	710-0167		Carriage Bolt 1/4-20 x .5" Lg.	39	16903A		Spacer .262" I.D. x .31"
8	710-0726		Hex Wash. Hd. Tap Scr. 5/16 x .75" Lg.	40	710-1005		Hood Plate
9	17633A		Support Bracket	41	731-1048B		Hex Wash. Hd. Tap Scr. 1/4-20 x .5" Lg.
10	17300D		Dash Support Bracket	42	725-0925		Dash
11	783-0350		Rear Fender	43	831-0823A		Ammeter
12	730-3000		Reflector (Optional)	44	710-0919		Throttle Control Box Ass'y.
14	17308A		Side Panel—R.H.†	45	746-0616A		Mach. Scr. #10 x .44" Lg.
	17309A		Side Panel—L.H. (Not Shown)†		746-0614A		Choke Control 23" Lg.†
	16723		Side Panel—R.H. (16 H.P. Tec.)		746-3021		Choke Control 38" Lg.††
	17458A		Side Panel w/Foam—R.H.††				Choke Control (Vanguard & O.H.V.)
	17459A		Side Panel Ass'y. w/Foam—L.H. (Not Shown)††	46	746-0720		Choke Control (Tec.)
15	710-0286		Truss Mach. Scr. 1/4-20 x .5" Lg.		746-0776		Throttle Control Wire 18.5" Lg.†
16	710-0166		Truss Mach. Scr. 1/4-20 x 1.0" Lg.		746-0634		Throttle Control Wire 35" Lg.††
17	710-1026		Hex Wash. TT-Tap Scr. 1/4-20 x 1.75" Lg.	47	725-0267		Throttle Control Wire 22" Lg. (Tec.)
18	750-0768		Spacer .26" I.D. x 1.32"	48	725-0201		Ignition Switch
19	710-0642		Hex Rolling Tap Scr. 1/4-20 x .75" Lg.	49	731-1491		Ignition Key
21	731-0511-18		Trim Strip—18" Lg.		731-1492		Hood—Red
22	736-0329		L-Wash. 1/4" I.D.*		731-1497		Hood—Midnight Blue
23	712-0271		Hex Sems Nut 1/4-20 Thd.		731-1531		Hood—Oyster Gray
24	726-0201		Speed Nut 5/16" Thd.		731-1532		Hood—Charcoal Gray
27	17410		Grille Ass'y.	71	749-0814		Hood—Orange
28	731-1044		Headlight Lens	73	736-0607		Grille Support Tube
29	731-0705		Headlamp Housing	76	17782		External L-Wash. 5/16" I.D.
30	725-0963		Headlamp	77	725-0634		Choke Retainer
31	725-1650		Twist Lock Lamp Socket	78	736-3010		Light Switch
32	736-0242		Bell-Wash. .345" I.D. x .88"	79	710-0206		FI-Wash. .406" I.D. x .812" O.D.
33	712-0429		Hex L-Nut 5/16-18 Thd.	80	783-0013		Hex Bolt 1/4-20 x .88" Lg.
34	735-0126		Rubber Washer	81	725-0157		Dash Fastening Tab
35	783-0190		Hood Hinge	82	777-8568A		Cable Tie
				83	726-0211		Chrome Label
							U-Nut 5/16-18 Thd.

†Used with Single Cylinder Engine Only.

††Used with Twin Cylinder Engine Only.

Models 690 thru 699



Models 690 thru 699

PARTS LIST FOR MODELS 690 THRU 699 LAWN TRACTORS

REF. NO.	PART NO.	CODE	DESCRIPTION	REF. NO.	PART NO.	CODE	DESCRIPTION
1	731-0220		Steering Wheel Cap	31	712-0711		Hex Jam Nut 3/8-24 Thd.*
	731-1459		Steering Wheel Cap (Sq.—MTD)	32	**		Front Axle Ass'y.—R.H.
	731-1460		Steering Wheel Cap (Square—No Logo)	33	**		Wheel Ass'y. Comp.
2	710-0643		Hex Bolt 5/16-18 x 1" Lg.	34	**		Front Wheel Rim Only
3	736-0242		Belleville Wash. .345" I.D.	35	**		Bearing
4	731-1693	N	Steering Wheel (3 Spoke)†	36	736-0285		Fl-Wash. .635 I.D. x 1.59" O.D.
	731-1687	N	Steering Wheel (3 Spoke)††	37	731-0484A		Front Wheel Hub Cap
	631-0027		Steering Wheel (4 Spoke)		731-1787		Spoked Hub Cap (Yellow—Opt.)
5	731-0559		Steering Bellow—4.5" (Style 8)		734-1613		Spoked Hub Cap (Gray—Opt.)
	731-0954		Steering Bellow—9" (Style 0, 1, 3, 4, 5, 6, 9)		734-1612		Spoked Hub Cap (Beige—Opt.)
	731-1542		Steering Bellow—3.25" (Style 7)	38	714-0470		Cotter Pin 1/8" Dia. x 1.25"
7	741-0587		Flange Bearing .628" I.D. x 1.36 O.D. (Style 8)	39	736-0531		Fl-Wash. .640" I.D. x 1.24" O.D.
9	17198A		Retainer Plate	40	726-0214		Push Cap 5/8" Dia. Rod
10	738-0141		Shoulder Bolt .437" Dia. x .35 Lg. 5/16-18 Thd.	42	712-0262		Hex Jam Nut 3/8-24 Thd.
11	710-0152		Hex Bolt 3/8-24 x 1.0" Lg. (Gr. 5)	43	710-1309		Hex Patch Bolt 5/16-18 x .62"
13	750-0535		Spacer .380" I.D. x .625" O.D. x .227	44	736-0119		L-Wash. 5/16" I.D.*
14	736-0217		L-Wash. 3/8" I.D. (H.D.)	45	736-0343		Fl-Wash. .33" I.D. x 1.25" O.D.
15	710-0726		Hex Wash. Hd. Self-Tap Scr.	46	748-0389		Cap
16	711-1068	N	Steering Drag Link	47	712-0214		Hex Cent. L-Nut 3/8-24 Thd.
17	783-0041A	N	Front Pivot Brkt.	48	736-0169		L-Wash. 3/8" I.D.*
18	738-0527		Shoulder Bolt .498" Dia. x 2.04 Lg. 3/8-16 Thd.	49	712-0158		Hex Cent. L-Nut 5/16-18 Thd.
19	712-0431		Flanged L- Nut 3/8-16 Thd.*	50	736-0119		L-Wash. 5/16" I.D.*
21	712-0411		Hex L-Nut 5/16-24 Thd.	51	717-0622A		Steering Gear Segment
22	16481A		Steering Arm Front Axle	52	741-0656	N	Hex Flg. Brg. .634 I.D.
23	710-0772		Hex Bolt 5/16-24 x 2.00" Lg. (Gr.5)	53	736-0187		Fl-Wash. (Hardened)
24	741-0659	N	Hex Flg. Brg. .632 I.D.	54	738-0919	N	Steering Shaft
25	683-0128	N	Pivot Bar Ass'y.	57	710-0837		Oval Hd. Cr.—Sunk Scr. #10 x 5/8" Lg. (Style 8)
26	**		Front Axle Ass'y.—L.H.	58	736-0271		Wave-Wash. .32" I.D. x .62" O.D.
27	712-0241		Hex Nut 3/8-24 Thd.*	59	736-0187		Fl-Wash. (Hardened)
28	736-0169		L-Wash. 3/8" I.D.*	60	723-3018		Drag Link Ball Joint 3/8-24 Thd.
29	723-3018		Ball Joint 3/8-24 Thd.	61	736-0607		Ext. L-Wash. 5/16" I.D.
30	747-0753		Tie Rod (Adjustable)	63	727-0425A		Spring Clip (Used w/Spoked Hub Cap)
	747-0861		Tie Rod (Non-Adjustable)	64	736-0356		Bell-Wash. .39" I.D. x 1.38" O.D.
				65	731-1291A	N	Pivot Bar End Cap (Optional)
				66	710-0459		Hex Bolt 3/8-24 x 1.5" Lg. (Gr. 5)
				69	731-1699	N	Axle Cap
				70	731-0955		Steering Wheel Insert (Optional)

† Uses Round Steering Wheel Cap

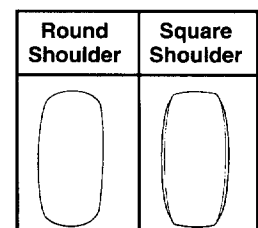
†† Uses Square Steering Wheel Cap

*For faster service obtain standard nuts, bolts and washers locally.

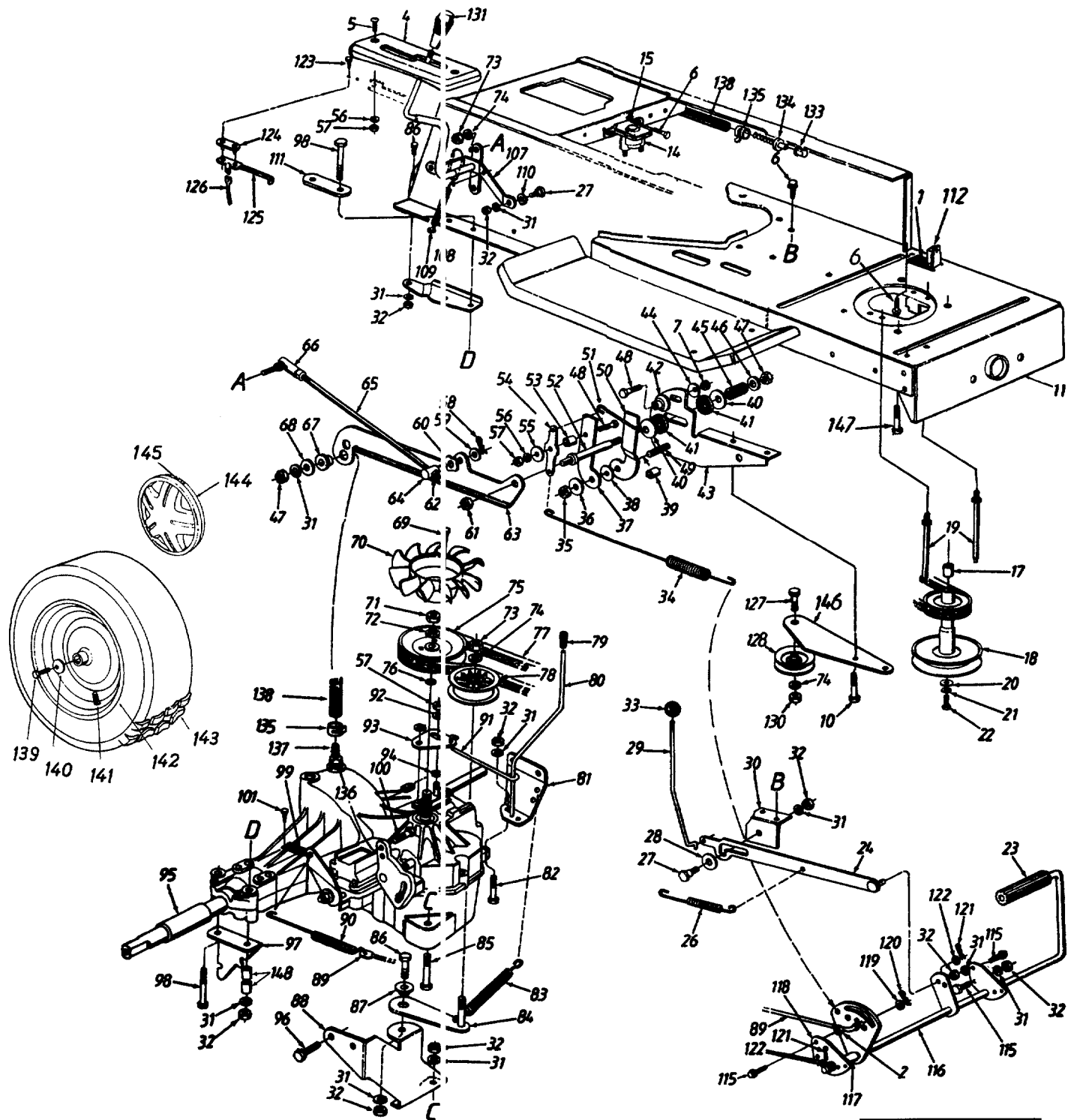
If these items cannot be obtained locally, order by part number and size as shown on parts list.

**FRONT WHEEL CHART

Description	15" x 6" (Round Shoulder)	15" x 6" (Square Shoulder)
Wheel Ass'y. Comp.	634-0056	634-0105
Tire Only	734-0864	734-1731
Rim Only	634-0024	634-0024
Bearing	741-0487A	741-0487A
Air Valve	734-0255	734-0255
Grease Fitting (Optional)	737-0211	737-0211
Grease Plug	737-0212	737-0212
Front Axle Ass'y.—L.H.	683-0127	683-0127
Front Axle Ass'y.—R.H.	683-0126	683-0126
Front Axle Ass'y.—L.H. (46" Deck)	683-0124	683-0124
Front Axle Ass'y.—R.H. (46" Deck)	683-0125	683-0125

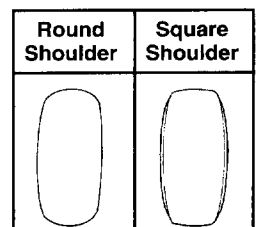


Models 690 thru 699



****REAR WHEEL CHART**

Description	20" x 8.0" (Round Shoulder)	20" x 8.0" (Square Shoulder)
Wheel Ass'y. Comp.	734-1675	634-0104
Tire Only	734-1596	734-1730
Rim Only	634-0070	634-0070



Models 690 thru 699

PARTS LIST FOR MODELS 690 THRU 699 LAWN TRACTORS

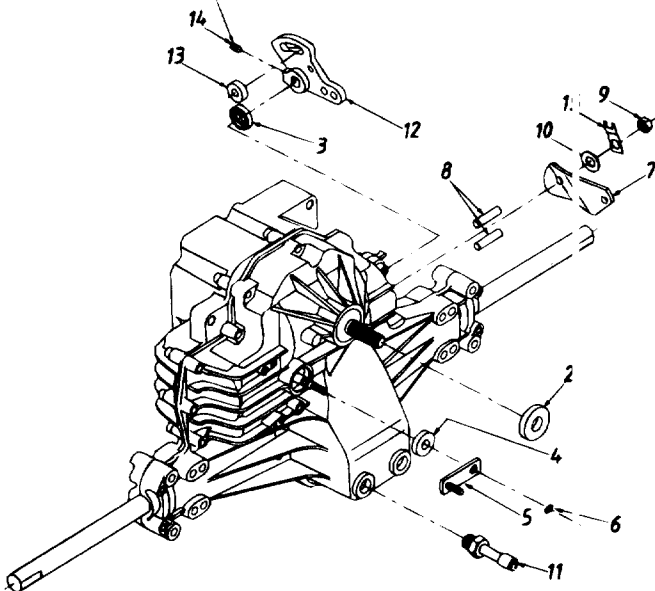
REF. NO.	PART NO.	CODE	DESCRIPTION	REF. NO.	PART NO.	CODE	DESCRIPTION
1	732-0750A	N	Spring Switch	64	711-0832		Ferrule 3/8-24 Thd.
2	712-0265		Hex Sems Nut 5/16-18 Thd.	65	747-0365		Control Rod
4	731-1053B		Index Bracket	66	723-0351		Ball Joint 3/8-24 Thd.
5	710-0924		Pan Hd. Mach. Scr. 1/4-20 x .75" Lg.	67	748-0234		Shld. Spacer .5" Dia. x .27" Lg.
6	710-0599		Hex Wash. Hd. TT-Tap Scr. 1/4-20 x .5" Lg.	68	736-0159		FI-Wash. .349" I.D. x .879" O.D.
7	712-0138		Hex Nut 1/4-28 Thd.	69	710-3007		Hex Tap Scr. #12 x 3/8" Lg.
8	736-0329		L-Wash. 1/4" I.D.*	70	731-1449		Fan
10	710-0195		Hex. Bolt 1/4-28 x .62" Lg.	71	712-0333		Hex Nut 1/2-20 Thd.
11	783-0310	N	Lower Frame Ass'y.	72	736-0921		L-Wash. 1/2" I.D.*
14	725-1426		Solenoid	73	712-0241		Hex Nut 3/8-24 Thd.
15	736-0222		Ext. L-Wash. 1/4" I.D.	74	736-0169		L-Wash. 3/8" I.D.
17	750-0956		Spacer	75	756-0975		Transmission Pulley
18	756-0983		Engine Pulley	76	732-0729		Wire Ring
19	711-1044		Belt Guard Stud 4.75" Lg.	77	754-0349		"V"-Belt
20	736-0322		FI-Wash. 7/16" I.D. x 1.25" O.D.	78	756-0981		FI-Idler Pulley 2.75" O.D.
21	736-0171		L-Wash. 7/16" I.D.*	79	720-0238		Rod End Grip
22	710-0757		Hex Bolt 7/16-20 x 1.5" Lg.	80	747-0894		Bypass Control Lever
23	735-0196		Foot Pad	81	783-0085		Transaxle Support Brkt.—L.H.
24	683-0049		Brake Lockout Brkt. Ass'y.	82	710-0528		Hex Bolt 5/16-18 x 1.25" Lg.
26	732-0728		Foot Pedal Return Spring	83	732-0384		Ext. Spring 6.12
27	738-0296		Shld. Bolt .437" Dia. x .268"	84	683-0051		Idler Brkt. Ass'y.
28	736-0406		FI-Wash. 7/16" I.D. x 1-3/8" O.D.	85	710-0116		Hex Bolt 5/16-18 x 2.5" Lg.*
29	747-0608A	N	Lock-up Rod	86	710-0118		Hex Bolt 5/16-18 x .75" Lg.*
30	17755A		Bracket	87	748-0234		Shld. Spacer .5" Dia. x .27" Lg.
31	736-0119		L-Wash. 5/16" I.D.*	88	783-0086A		Transaxle Support Brkt.—R.H.
32	712-0267		Hex Nut 5/16-18 Thd.*	89	747-0886		Brake Rod 24.94" Lg.
33	720-0166		Ball Knob	90	732-0716		Ext. Spring
34	732-0727		Neutral Return Spring	91	747-0893		Bypass Actuator Rod
35	712-0273		Hex Nut 5/16-24 Thd.	92	736-0142		FI-Wash. .281" I.D. x .5" O.D.
36	736-3078		FI-Wash. .344" I.D. x 1" O.D.	93	783-0098		Bypass Adjustment Brkt.
37	783-0092		Scissor-Flat	94	736-0222		External L-Wash. 1/4" I.D.
38	736-0362		FI-Wash. .33" I.D. x 1.25" O.D.	95	731-1086A		Sleeve .758" I.D. x 1" O.D.
39	750-0808		Spacer	96	710-0604		Hex. TT-Tap Scr. 5/16-18 x .62"
40	736-0219		Bell-Wash. .4" I.D. x 1.13" O.D.	97	17994		Retainer Brkt.-Transaxle
41	761-0196		Friction Washer	98	710-0176		Hex Bolt 5/16-18 x 2.75" Lg.
42	750-0918		Centering Gauge Spacer		710-3195		Hex Bolt 5/16-18 x 4.5" Lg.
43	783-0095		Neutral Return Mtg. Brkt.	99	732-0250		(Used w/46" Deck)
44	736-0270		Bell-Wash. .265" I.D. x .75" O.D.	100	710-0888		Tension Spring
45	732-0718		Comp. Spring 1.19" Lg.				Hex Bolt 5/16-24 x 1" Lg.
46	736-3092		FI-Wash. .26" I.D. x .72" O.D.	101	710-0224		(Special)
47	712-0123		Hex Nut 5/16-24 Thd.				Hex Wash. Hd. AB-Tap Scr.
48	710-0299		Hex Bolt 1/4-28 x 1" Lg. (Gr. 5)	107	647-0008A		#10 x .5" Lg.
49	710-1012		Rib Neck Bolt 5/16-24 x .84" Lg.	108	17668		Speed Control Lever Ass'y.
50	783-0093		Scissor-Offset		17669		Axle Support Brkt.—R.H.
51	747-0887		Neutral Return Rod				Axle Support Brkt.—L.H.
52	738-0879		Friction Disc Stud	109	732-0433		(Not Shown)
53	748-0368		Shld. Spacer	110	736-0141		Ext. Spring 2.75" Lg.
54	783-0096		Neutral Return Lever	111	17840		Spr-Wash. .445" I.D. x .75" O.D.
55	736-3092		FI-Wash. .265" I.D. x 1" O.D.	112	725-1657A		Transaxle Mtg. Brkt.
56	736-0329		L-Wash. 1/4" I.D.*	115	710-0650		Safety Switch (Clutch)
57	712-0287		Hex Nut 1/4-20 Thd.*	116	683-0123	N	Hex TT-Tap Scr. 5/16-18 x .75"
58	714-0104		Hairpin Clip	117	750-0802		Clutch/Brake Pedal Ass'y.
59	736-0262		FI-Wash. .375" I.D. x .87" O.D.	118	17860		Spacer .63" I.D.
60	736-0413		Spring Wash. .39" I.D.	119	736-3008		Pedal Bracket
61	712-0116		Hex L-Nut 3/8-24 Thd.	120	714-0111		FI-Wash. .344" I.D. x .75" O.D.
62	712-0711		Hex Jam Nut 3/8-24 Thd.	121	714-0470		Cotter Pin 3/32" Dia.
63	783-0090A		Neutral Return Brkt.	122	736-0140		Cotter Pin 1/8" Dia.
				123	710-0227		FI-Wash. .385" I.D. x .62" O.D.
							Hex AB-Tap Scr. #8 x .5" Lg.

PARTS LIST FOR MODELS 690 THRU 699 LAWN TRACTORS

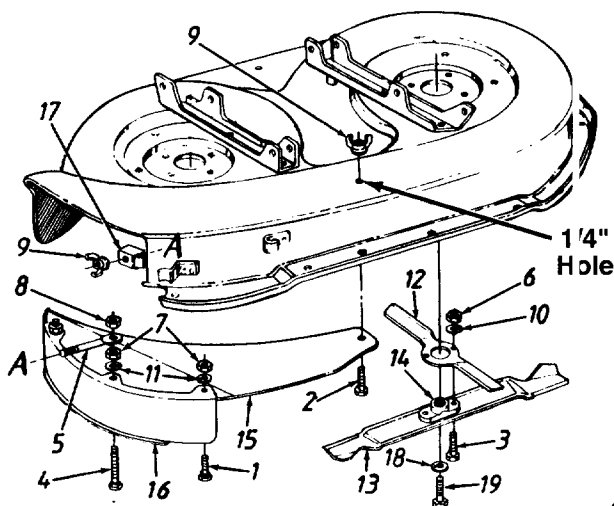
REF. NO.	PART NO.	CODE	DESCRIPTION	REF. NO.	PART NO.	CODE	DESCRIPTION
124	726-0320		Insulator Nut Plate	139	710-0627		Hex Bolt 5/16-24 x .75" Lg.
125	725-1643		Reverse Safety Switch	140	736-0242		Bell-Wash. .345" I.D. x .88" O.D.
126	725-1399		Extension Wire	141	734-0255		Air Valve
127	710-0520		Hex Bolt 3/8-16 x 1.5" Lg.	142	**		Rim Only
128	756-0116		Idler Pulley	143	**		Wheel Ass'y. Comp.
129	736-0280		FI-Wash. .39" I.D.		**		Tire Only
130	712-0798		Hex Nut 3/8-16 Thd.*	144	734-1615		Hub Cap (Gray—Optional)
131	720-0218		Shift Knob		734-1614		Hub Cap (Beige—Optional)
133	731-1481		Vent Cap		734-1788		Hub Cap (Yellow—Optional)
134	731-1480		Plastic Vent	145	727-0425A		Spring Clip
135	726-0324		Clamp	146	783-0099		Idler Bracket
136	721-0330		"O"-Ring	147	710-1315		Hex TT-Tap Scr. 3/8-16 x 1.25"
137	731-1485		Hose Fitting	148	750-0258		Spacer .32" I.D. x .75" O.D.
138	751-0588-18		Fuel Line 18" Lg.				(Used w/46" Deck)

Models 690 thru 699

TORQUE TO 80-100 IN-LBS.



Models 096 (38") and 097 (42")



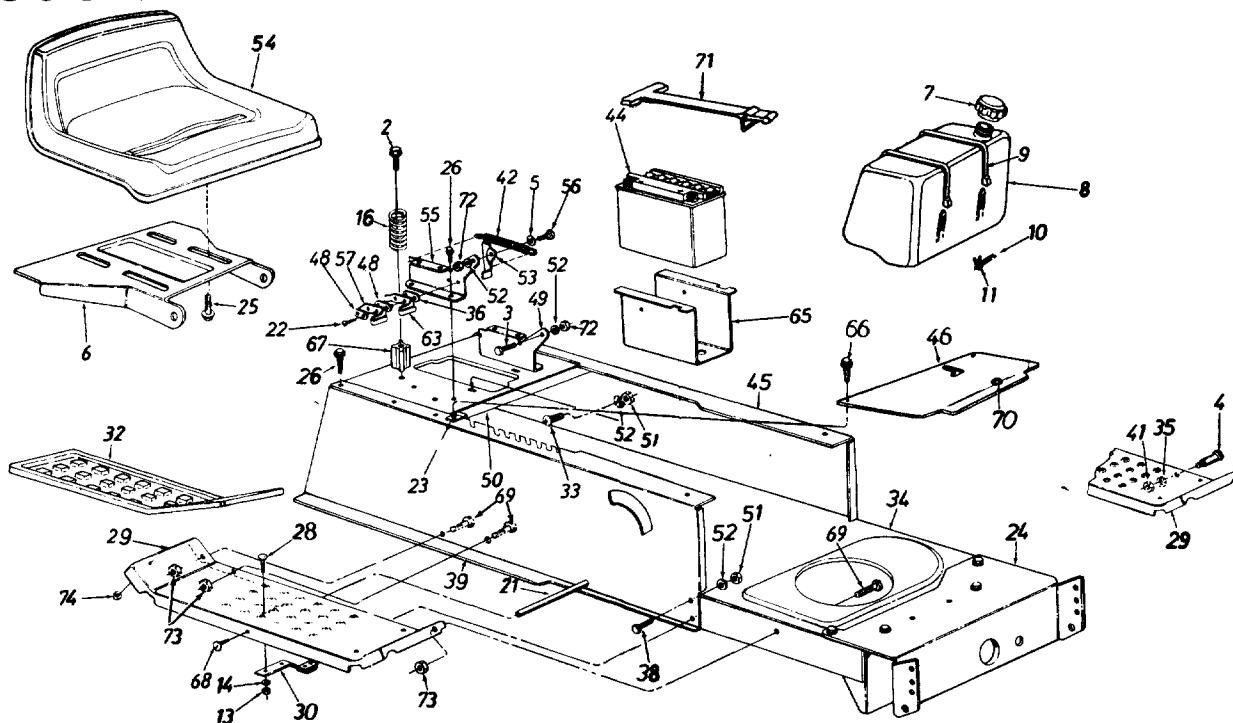
PARTS LIST FOR MODELS 690 THRU 699 LAWN TRACTORS

REF. NO.	PART NO.	QTY.	DESCRIPTION
1	718-0255A		Transmission Comp.
2	HG-9008000-0128	1	Seal—Lip
3	HG-9008000-0126	1	Seal—Lip
4	HG-45074	1	Seal—Lip 10X25X7
5	HG-50126	1	Arm—Bypass
6	HG-44870	1	Ring—Retaining
7	HG-44094	1	Arm—Actuating
8	HG-44891	2	Pin—Actuating
9	HG-50108	1	Nut—Hex Lock 5/16-24 UNJC
10	HG-44130	1	Washer 7/16" x 7/8" x .06"
11	HG-50042	1	Breather Ass'y.
12	HG-45007	1	Arm—Control
13	HG-50034	1	Puck—Dampener
14	HG-50018	1	Set Screw
15	HG-50129	1	Strap, Locking

PARTS LIST FOR MODELS 096 AND 097 MULCHING KITS

REF. NO.	PART NO.	DESCRIPTION	QTY.
1	710-0134	Carriage Bolt 1/4-20 x .62" Lg.	2
2	710-0597	Hex Bolt 1/4-20 x 1" Lg.	1
3	710-3029	Hex Bolt 7/16-20 x 1.25" Lg. (Gr. 5)	4
4	710-0932	Carriage Bolt 1/4-20 x 1" Lg.	1
5	711-0957	Retaining Bolt	1
6	712-0378	Hex Nut 7/16-20 Thd.	4
7	712-0287	Hex Nut 1/4-20 Thd.	3
8	712-0291	Hex L-Nut 1/4-20 Thd.	1
9	712-0397	Wing Nut	2
10	736-0171	L-Wash. 7/16" I.D.	4
11	736-0329	L-Wash. 1/4" I.D.	3
12	742-0539	Mulching Blade 12.5"	2
13	742-0537	Mulching Blade 19.38" (096)	2
	742-0538	Mulching Blade 21.2" (097)	2
14	748-0365	Blade Adapter	2
15	783-0024	Top Mulching Baffle (096)	1
	783-0026	Top Mulching Baffle (097)	1
16	783-0025	Side Mulching Baffle (096)	1
	783-0027	Side Mulching Baffle (097)	1
17	783-0028	Locking Bracket	1
18	736-0217	L-Wash. 3/8" I.D.	2
19	710-1039	Hex Bolt 3/8-24 x 1" Lg. (Gr. 8)	2

Models 690 thru 699

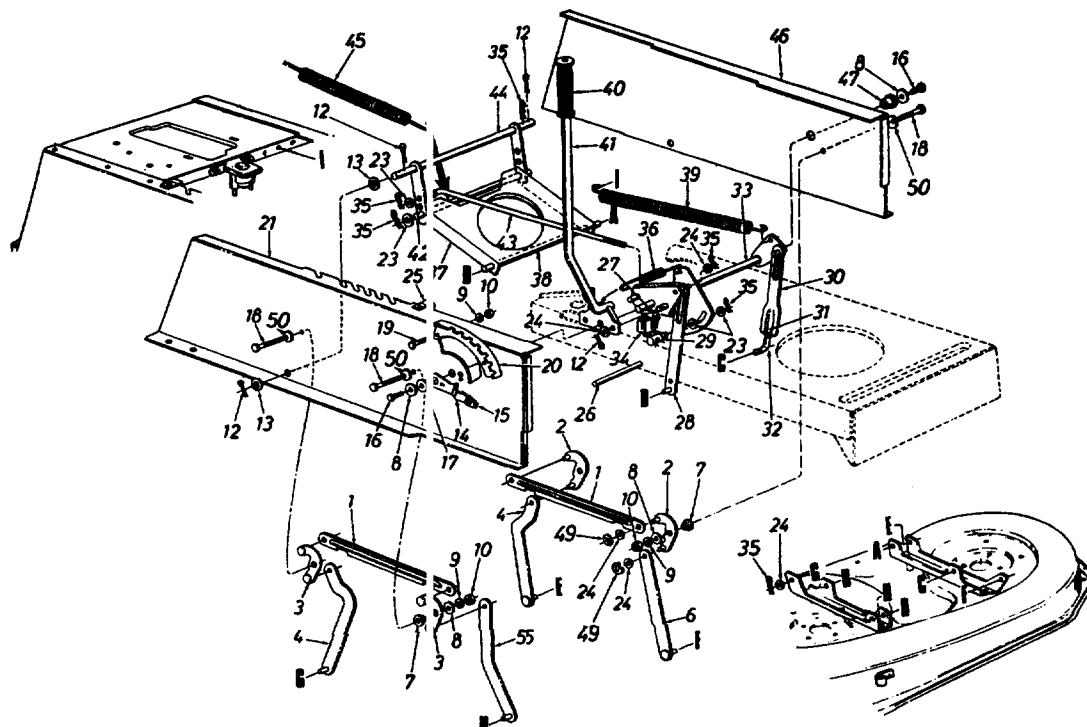


PARTS LIST FOR MODELS 690 THRU 699 LAWN TRACTORS

REF. NO.	PART NO.	CODE	DESCRIPTION	REF. NO.	PART NO.	CODE	DESCRIPTION
2	710-1208		Hex Wash. Hd. Tap Scr. 5/16-18 x 3.25" Lg.	41	712-0798		Hex Nut 3/8-16 Thd.*
3	738-0155		Shld. Bolt .437" Dia. x .162"	42	732-0581B		Extension Spring 5.31" Lg.
4	738-0145		Shld. Bolt .50" Dia. x .84"	44	725-1707	N	12-V Battery
5	736-0141		Spr-Wash. .445" I.D. x .75	45	783-0043		Upper Frame—L.H.
6	783-0039		Seat Pivot Bracket	46	783-0133A		Shift Cover
7	751-0603		Fuel Cap	48	726-0279		Insulator Plate
8	751-0553		Fuel Tank (12.5 H.P. & Smaller)	49	17951		Seat Pivot Brkt. Support—L.H.
	751-0555		Fuel Tank (13 H.P. & Larger)	50	783-0355	N	Hitch Plate
9	726-0209		Tie Strap	51	712-0267		Hex Nut 5/16-18 Thd.*
10	751-0535-15		Fuel Line	52	736-0119		L-Wash. 5/16" I.D.*
11	726-0205		Hose Clamp	53	17239A		Seat Lift Brkt.
13	712-0287		Hex Nut 1/4-20 Thd.*	54	757-0363		Seat 8-7/8" High
14	736-0329		L-Wash. 1/4" I.D.		757-0364		Seat 8-7/8" High (Yellow)
16	732-0735		Compression Spring		757-0360		Seat 10-5/8" High
21	738-0526		Running Board Rod		757-0365		Seat 10-5/8" High (Yellow)
22	710-0227		Hex Wash. Hd. AB-Tap Scr. #8 x .50" Lg.		757-0350		Seat 14-1/4" High
23	726-0139		Speed Nut #10Z		757-0372		Seat 14-1/4" High (Yellow)
24	783-0041		Front Pivot Brkt.	55	17950		Seat Pivot Brkt. Support—R.H.
25	710-0870		Hex Tap Scr. 3/8-16 x .62" Lg.	56	738-0296		Shld. Bolt .437" Dia. x .268"
26	710-0726		Hex Wash. Hd. AB-Tap Scr. 5/16 x .75" Lg.	57	725-1303		Spring Switch (Seat—Outer)
28	710-0134		Carriage Bolt 1/4-20 x .62"	59	710-0650		Hex Wash. TT-Tap Scr. 5/16-18 x 7/8" Lg.
29	17770B	N	Running Board (R.H. & L.H.)	63	725-1439		Safety Switch (Seat—Inner)
30	761-0168A		Blade Brake Ass'y.	65	783-0345	N	Battery Tray
32	731-0909		Rubber Foot Pad—L.H.**	66	710-0351		Truss Mach. B-Tap Scr. #10 x .5" Lg.
	731-0910		Rubber Foot Pad—R.H.**	67	748-0347		Spring Spacer
	723-0422		Abrasive Foot Pad**	68	710-0323		Truss Mach. Scr. 5/16-18 x .75"
34	783-0310	N	Lower Frame	69	710-0118		Hex Bolt 5/16-18 x .75" Lg.*
35	736-0169		L-Wash. 3/8" I.D.*	70	731-0405		Snap Bushing
36	726-0278		Insulator Boss Plate	71	723-3064	N	Battery Retainer Strap
37	736-0264		Fl-Wash. .344" I.D. x .625" O.D.	72	712-3010		Hex Nut 5/16-18 Thd.
38	710-0118		Hex Bolt 5/16-18 x .75" Lg.*	73	712-0265		Hex Sems Nut 5/16-18 Thd.
39	783-0042A	N	Upper Frame—R.H.	74	712-0271		Hex Sems Nut 1/4-20 Thd.

**Optional Parts

Models 690 thru 699

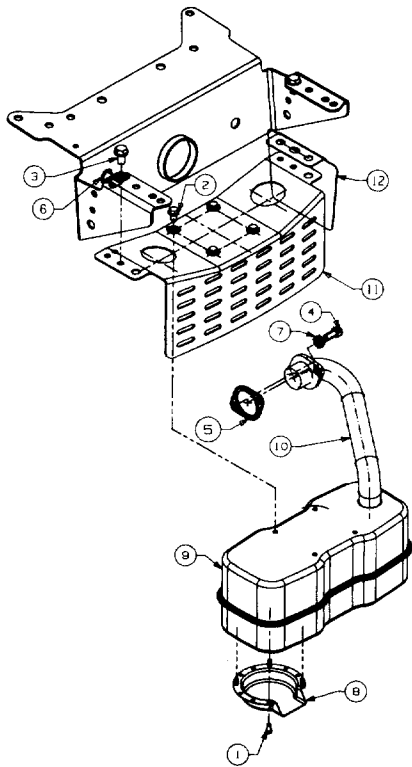


PARTS LIST FOR MODELS 690 THRU 699 LAWN TRACTORS

REF. NO.	PART NO.	CODE	DESCRIPTION	REF. NO.	PART NO.	CODE	DESCRIPTION
1	783-0103		Connecting Rod	25	726-0272		Clamp
2	683-0029A		Pivot Link Ass'y.—L.H.	26	738-0526		Running Board Rod
3	683-0028A		Pivot Link Ass'y.—R.H.	27	710-3007		Hex Wash. Hd. Tap Scr.
4	17710		Deck Hanger Link Ass'y.	28	14802A		Link Deck Lift Ass'y.
5	14800A		Deck Hanger Link Ass'y.	29	711-0723A		Adj. Ferrule 3/8-24 Thd.
6	14804A		Deck Hanger Link Ass'y.	30	17712		Adj. Deck Lift Link
7	748-0331		Shld. Spacer .318" I.D.	31	712-3066		Hex Nut 1/2-20 Thd. (Gr. 5)
8	736-0264		Fl-Wash. .344" I.D. x .62" O.D.	32	711-0841		Lift Link Adjuster
9	736-0119		L-Wash. 5/16" I.D.*	33	17637A		Lift Shaft Ass'y.
10	712-3010		Hex Nut 5/16-18 Thd.—Gr. 5	34	725-1657A	N	Safety Switch
12	714-0470		Cotter Pin 1/8" Dia.	35	714-0145		Inter. Cotter Pin 3/8" Dia.
13	736-0256		Fl-Wash. .635" I.D. x 1.0" O.D.	36	732-0637		Extension Spring
14	683-0003		Height Adj. Stop Lever Ass'y. (Incl. Ref. 15)†	37	17636B		Stabilizer Bracket
15	08540		Knob†	38	738-0670		Shaft 1/2" Dia. x 10.28" Lg.
16	710-0604		Hex Wash. TT-Tap Scr. 5/16-18 x .75" Lg.	39	732-0638		Extension Spring
17	748-0176		Flange Brg. .63" I.D.†	40	720-0233		Grip (Lift Handle)
18	710-1238		Hex Wash. Hd. Scr. 5/16-18 x .875" Lg.	41	97675A	N	Deck Lift Handle Ass'y.
19	710-0118		Hex Bolt 5/16-18 x .75" Lg.	42	738-0669		Shaft 3/8" Dia. x 9.34" Lg.
20	17730		Index Brkt.	43	747-0598		Disengagement Rod
21	782-0042A		Upper Frame—R.H.	44	97624	N	Stabilizer Shaft Ass'y.
23	736-0267		Fl-Wash. .385" I.D. x .87" O.D.	45	732-0556		Extension Spring 7.58" Lg.
24	736-0160		Fl-Wash. .531" I.D. x .93" O.D.	46	783-0043		Upper Frame—L.H.
				47	741-0313		Flange Brg. .632" I.D.
				49	716-0104		"E"-Ring
				50	736-0425		Bell-Wash. .325" I.D.

†Optional

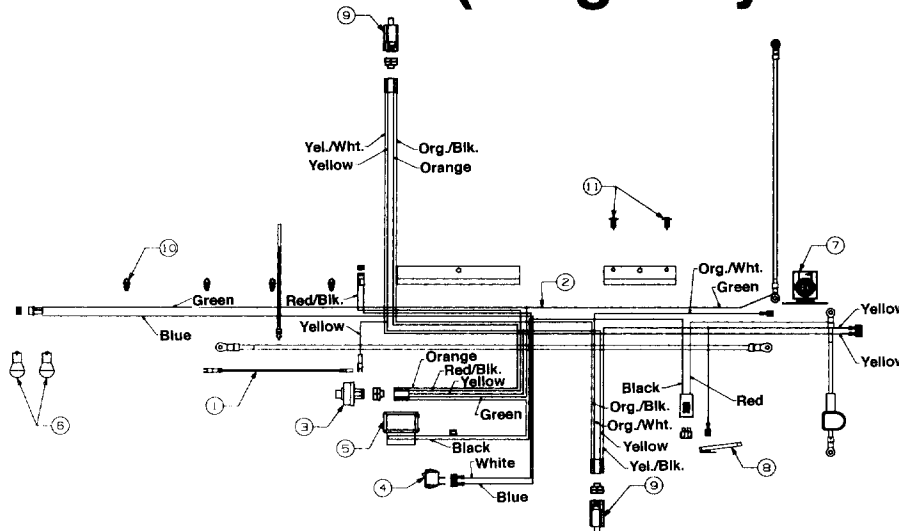
Models 690 thru 699 (Single Cylinder—Low Noise)



**PARTS LIST FOR MODELS 690 THRU 699
LAWN TRACTORS**

REF. NO.	PART NO.	CODE	DESCRIPTION
1	710-0148		Hex Slot Scr. #8-32 x .38" Lg.
2	710-0599		Hex Wash. TT-Tap Scr. 1/4-20 x .5" Lg.
3	710-0604		Hex Wash Hd. TT-Tap Scr. 5/16-18 x .62" Lg.
4	710-1314		Socket Hd. Bolt 5/16-18 x .62" Lg.
5	721-0208		Exhaust Gasket
6	726-0272		Clamp
7	736-0119		L-Wash. 5/16" I.D.*
8	751-0564		Muffler Deflector
9	751-0617		Muffler
10	751-0618		Exhaust Pipe
11	783-0320	N	Muffler Bracket
12	783-0385	N	Shield Bracket

Models 690 thru 699 (Single Cylinder)

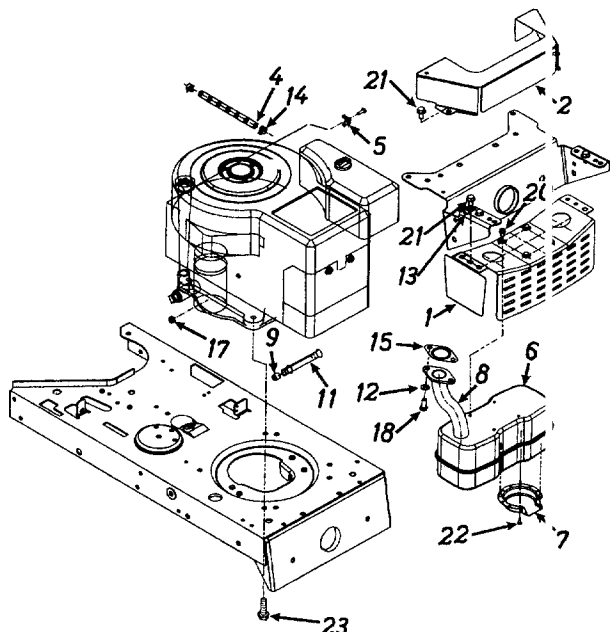


PARTS LIST FOR ELECTRICAL SYSTEM

REF. NO.	PART NO.	CODE	DESCRIPTION	REF. NO.	PART NO.	CODE	DESCRIPTION
1	629-0207		Harness Adapter (Mag.)	5	725-0925		Ammeter (Optional)
2	629-0302	N	Wire Harness w/Light Switch and Amp	6	725-0963		Bulb (Headlight)
	629-0301	N	Wire Harness w/o Light Switch and Amp	7	725-1426		Solenoid
3	725-0267		Ignition Switch	8	725-1643		Safety Switch (Reverse)
4	725-0634		Light Switch (Optional)	9	725-1657A		Safety Switch
				10	725-1711	N	Wire Retainer Clip
				11	726-3046	N	Ratchet

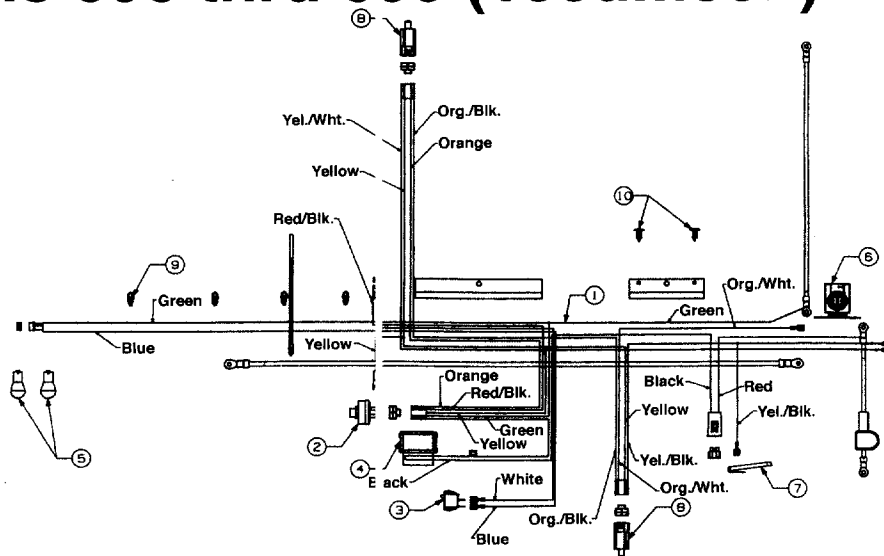
Models 690 thru 699 (Tecumseh)

PARTS LIST FOR MODELS 690 THRU 699 LAWN TRACTORS



REF. NO.	PART NO.	CODE	DESCRIPTION
1	783-0385	N	Heat Shield Bracket
2	783-0378		Heat Shield
3	783-0320	N	Muffler Bracket
4	751-0535-12		Fuel Line
5	751-0360A		Casing Clamp
6	751-0617		Muffler
7	751-0564		Muffler Deflector
8	751-0620		Exhaust Pipe
9	751-0572		Hex Pipe Plug
11	737-0286		Pipe 3/8 NPT x 3.8" Lg.
12	736-0119		L-Wash. 5/16" I.D.*
13	726-0272		Clamp
14	726-0205		Hose Clamp
15	721-0348		Exhaust Gasket
17	712-0271	N	Hex Sems Nut 1/4-20 Thd.
18	710-1314		Socket Hd. Bolt 5/16-18 x .62" Lg.
19	710-1237		Hex Wash. Hd. Tap Scr. #10-32 x .62" Lg.
20	710-0599		Hex Wash. Hd. TT-Scr. 1/4-20 x .5" Lg.
21	710-0604		Hex Wash. Hd. TT-Scr. 5/16-18 x .62" Lg.
22	710-0148		Hex Bolt #8-32 x .38" Lg.
23	710-1315		Hex Wash. Hd. TT-Scr. 3/8-16 x 1.25" Lg.

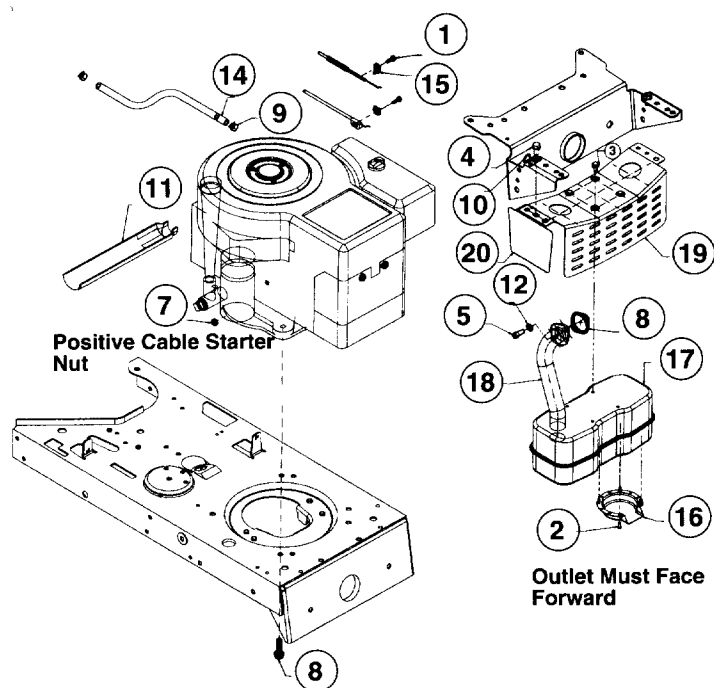
Models 690 thru 699 (Tecumseh)



PARTS LIST FOR MODELS 690 THRU 699 LAWN TRACTORS

REF. NO.	PART NO.	CODE	DESCRIPTION	REF. NO.	PART NO.	CODE	DESCRIPTION
1	629-0302	N	Wire Harness w/Light Switch and Amp	5	725-0963		Bulb (Headlight)
	629-0301	N	Wire Harness w/o Light Switch and Amp	6	725-1426		Solenoid
2	725-0267		Ignition Switch	7	725-1643		Safety Switch (Reverse)
3	725-0634		Light Switch (Optional)	8	725-1657A		Safety Switch
4	725-0925		Ammeter (Optional)	9	725-1711	N	Wire Retainer Clip
				10	726-3046	N	Ratchet

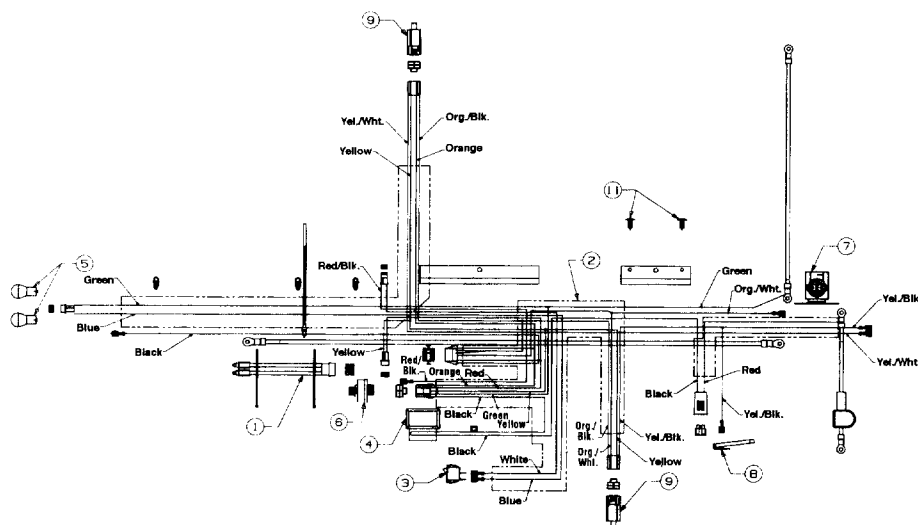
Models 690 thru 699 (O.H.V.)



**PARTS LIST FOR MODELS 690 THRU 699
LAWN TRACTORS**

REF. NO.	PART NO.	CODE	DESCRIPTION
1	710-1237		Hex Wash. Scr. #10-32 x .62"
2	710-0148		Hex Tap Scr. #8-32 x .38" Lg.
3	710-0599		Hex TT-Tap Scr. 1/4-20 x .5" Lg.
4	710-0604		Hex TT-Tap Scr. 5/16-18 x .62"
5	710-1314	N	Socket Head Scr. 5/16-18 x .62"
6	710-1315	N	Hex TT-Tap Scr. 3/8-16 x 1.25"
7	712-0271		Hex Sems Scr. 1/4-20 Thd.
8	721-0208		Gasket
9	726-0205		Hose Clamp
10	726-0272		Clamp
11	731-1682A	N	Oil Drain Sleeve
12	736-0119		Lock Washer 5/16" I.D.
14	751-0535-12		Fuel Line 12" Lg.
15	751B213146		Casing Clamp
16	751-0564		Muffler Deflector
17	751-0617	N	Muffler
18	751-0619	N	Exhaust Pipe
19	783-0320	N	Muffler Brkt.
20	783-0385	N	Shield Brkt.

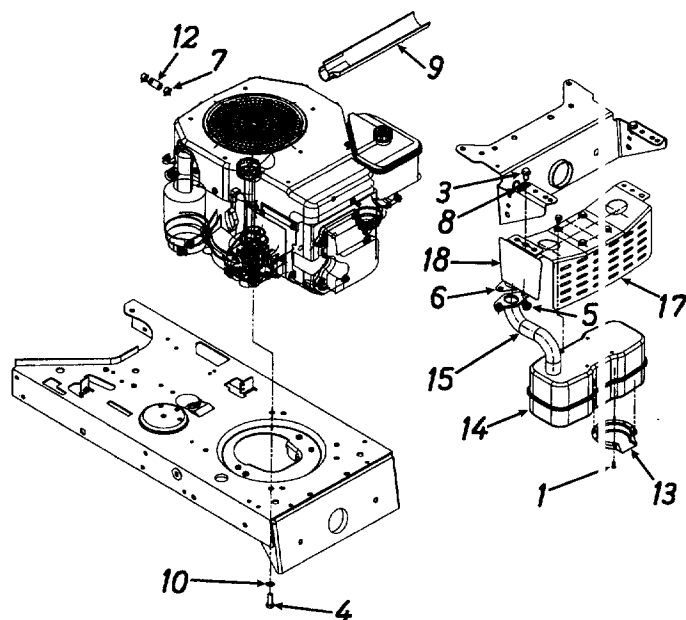
Models 690 thru 699 (O.H.V.)



PARTS LIST FOR ELECTRICAL SYSTEM

REF. NO.	PART NO.	CODE	DESCRIPTION	REF. NO.	PART NO.	CODE	DESCRIPTION
1	629-0132		Wire Harness (Monitor)	4	725-0925		Ammeter (Optional)
2	629-0306	N	Wire Harness w/Light Switch, Amp and Monitor	5	725-0963		Bulb (Headlight)
	629-0305	N	Wire Harness w/Light Switch and Amp	6	725-1396		Ignition Switch
	629-0304	N	Wire Harness w/o Light Switch and Amp	7	725-1426		Solenoid
3	725-0634		Light Switch (Optional)	8	725-1643		Safety Switch (Reverse)
				9	725-1657A		Safety Switch
				10	725-1711	N	Wire Retainer Clip
				11	726-3046	N	Ratchet

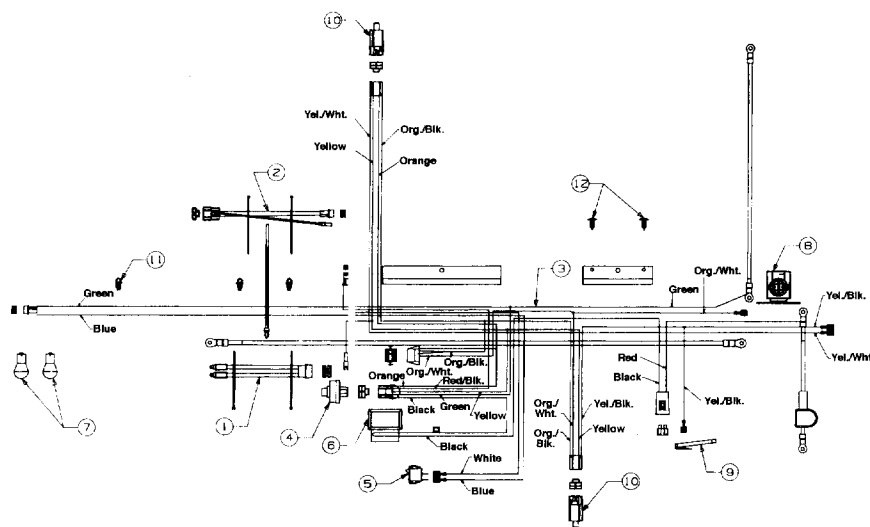
Models 690 thru 699 (Kohler)



**PARTS LIST FOR MODELS 690 THRU 699
LAWN TRACTORS**

REF. NO.	PART NO.	CODE	DESCRIPTION
1	710-0148		Hex Tap Scr. #8-32 x .38" Lg.
2	710-0599		Hex Wash. Hd. TT-Tap Scr. 1/4-20 x .5" Lg.
3	710-0604		Hex Wash. Hd. TT-Tap Scr. 5/16-18 x .62" Lg.
4	710-3206A		Hex Bolt M8-1.25 x 25 MM Lg.
5	712-3086		Hex Flange Nut M8-1.25 Thd.
6	721-0375		Exhaust Gasket
7	726-0205		Hose Clamp
8	726-0272		Clamp
9	731-1682A	N	Oil Drain Sleeve
10	736-0607		Ext. L-Wash. 5/16" I.D.
12	751-0535-12		Fuel Line 12" Lg.
13	751-0564		Muffler Deflector
14	751-0617		Muffler
15	751-0621		Exhaust Pipe
17	783-0320	N	Muffler Bracket
18	783-0385		Shield Bracket

Models 690 thru 699 (Kohler)

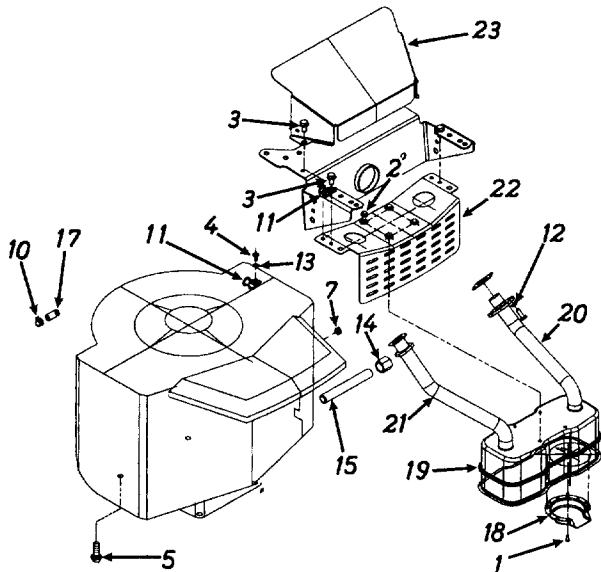


PARTS LIST FOR MODELS 690 THRU 699 LAWN TRACTORS

REF. NO.	PART NO.	CODE	DESCRIPTION	REF. NO.	PART NO.	CODE	DESCRIPTION
1	629-0132		Wire Harness (Monitor)	7	725-0963		Bulb (Headlight)
2	629-0209		Harness Adapter (Alt.)	8	725-1426		Solenoid
3	629-0303	N	Wire Harness	9	725-1643		Safety Switch (Reverse)
4	725-0267		Ignition Switch	10	725-1657A		Safety Switch
5	725-0634		Light Switch	11	725-1711	N	Clip
6	725-0925		Ammeter	12	726-3046	N	Ratchet

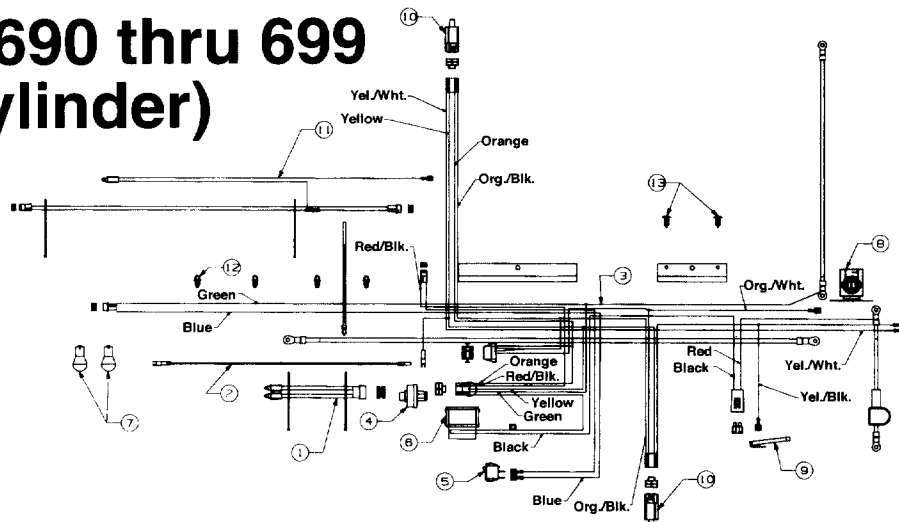
Models 690 thru 699 (Twin Cylinder)

PARTS LIST FOR MODELS 690 THRU 699 LAWN TRACTORS



REF. NO.	PART NO.	CODE	DESCRIPTION
1	710-0148		Hex Tap Scr. #8-32 x .38" Lg.
2	710-0599		Hex Wash. TT-Tap Scr. 1/4-20 x .5" Lg.
3	710-0604		Hex Wash. TT-Tap Scr. 5/16-18 x .62" Lg.
4	710-0779A		Truss Mach. Scr. #10 x .5" Lg.
5	710-1315		Hex Hd. Tap Scr. 3/8-16 x 1.25" Lg.
6	710-3015		Hex Bolt 1/4-20 x .75" Lg.
7	712-0271		Hex Sems Nut 1/4-20 Thd.
9	721-0346		Exhaust Gasket
10	726-0205		Hose Clamp
11	726-0272		Clamp
12	736-0329		L-Wash. 1/4" I.D.*
13	736-3067		FI-Wash. .188" I.D. x .438" O.D.
14	737-0143		Oil Drain Cap
15	737-0164		Pipe Nipple 3/8 x 18 NPT.
17	751-0535-26		Fuel Line 26" Lg.
18	751-0564		Deflector: Muffler
19	751-0616		Muffler
20	751-0623		Exhaust Pipe—L.H.
21	751-0624		Exhaust Pipe—R.H.
22	783-0320	N	Muffler Bracket
23	783-0357	N	Heat Shield

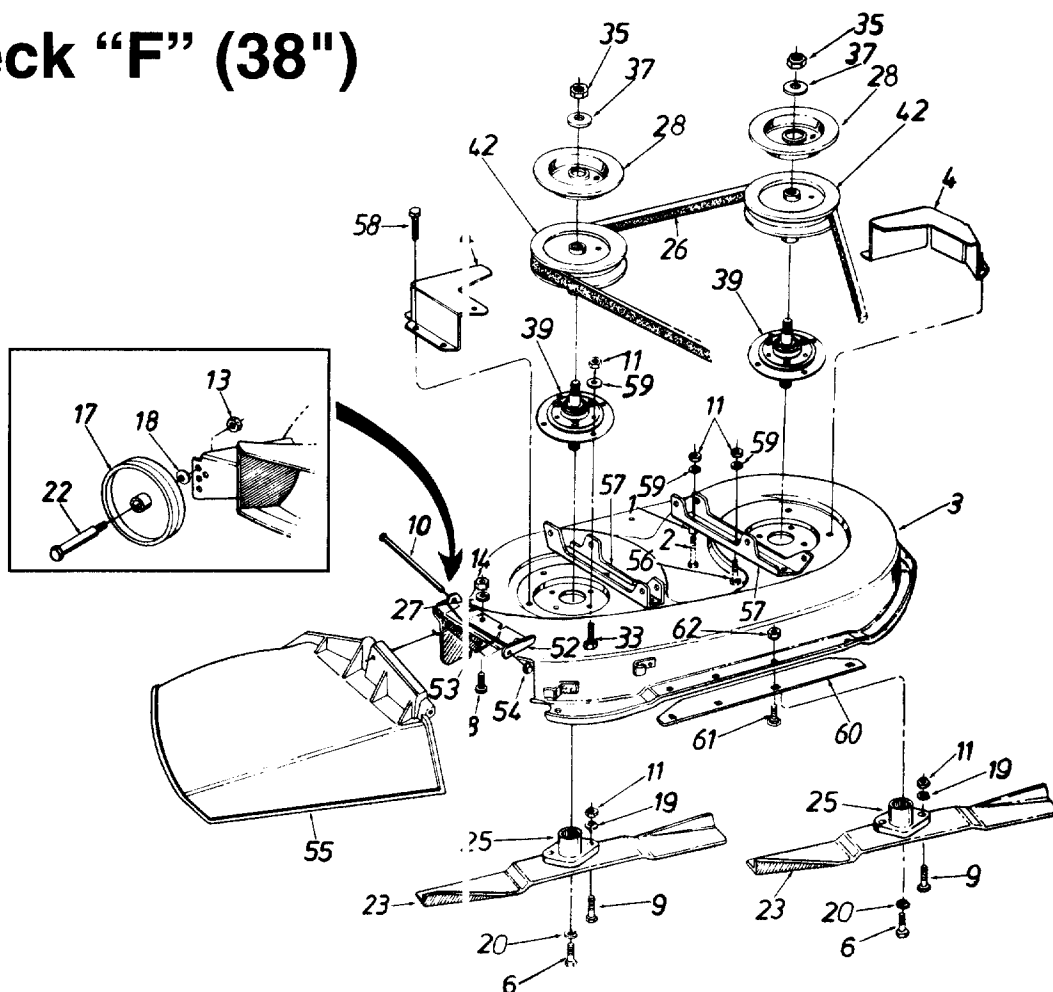
Models 690 thru 699 (Twin Cylinder)



PARTS LIST FOR MODELS 690 THRU 699 LAWN TRACTORS

REF. NO.	PART NO.	CODE	DESCRIPTION	REF. NO.	PART NO.	CODE	DESCRIPTION
1	629-0132		Wire Harness (Monitor)	5	725-0634		Light Switch
2	629-0208		Harness Adapter	6	725-0925		Ammeter
3	629-0303	N	Wire Harness w/Light Switch, Amp and Monitor	7	725-0963		Bulb
	629-0302	N	Wire Harness w/Light Switch and Amp	8	725-1426		Solenoid
	629-0301	N	Wire Harness w/o Light Switch and Amp	9	725-1643		Safety Switch (Reverse)
4	725-0267		Ignition Switch	10	725-1657A		Safety Switch
				11	725-1703		Harness Ass'y. (Oil—Optional)
				12	725-1711	N	Wire Retainer Clip
				13	726-3046	N	Ratchet

Deck "F" (38")



PARTS LIST FOR 38" MOWING DECK

REF. NO.	PART NO.	CODE	DESCRIPTION	REF. NO.	PART NO.	CODE	DESCRIPTION
1	750-0776		Spacer .33" I.D. x .88"	23	742-0473A		High-Lift Blade
2	710-0672		Hex Bolt 5/16-24 x 1.25" Lg.	25	748-0300		Blade Adapter
3	97503B	N	38" Deck Ass'y. w/Decl. Wheels	26	754-0433		V-Belt
	901-7503	N	38" Deck Ass'y. Comp. w/Deck	27	736-0270		Bell-Wash. 1/4" I.D.
			Wheels (For Service Only)	28	09322		Brake Disc
	17717B		38" Deck Ass'y. w/o Deck	33	710-0157		Hex Bolt 5/16-24 x .75" Lg.
			Wheels	35	712-0318		Hex Jam Nut 5/8-18 Thd.
	813-06102		38" Deck Ass'y. w/o Deck	37	736-0158		L-Wash. 5/8" I.D.*
			Wheels (For Service Only)	39	917-0906A	N	Blade Spindle Ass'y. Comp.
4	17665		Belt Guard Deck	42	756-0486		5" Dia. Pulley
6	710-0152		Hex Bolt 3/8-24 x 1.0" Lg.	52	703-1693		Hinge Mtg. Brkt.
8	710-0258		Hex Bolt 1/4-20 x .62"	53	732-0602		Torsion Spring
9	710-0888		Hex Bolt Special 5/16-24 x 1.0"	54	726-0106		Push Nut
10	711-0792		Hinge Pin	55	731-1032		Chute Ass'y. Comp. (Incl. Ref.
11	712-0123		Hex Nut 5/16-24 Thd.*				10, 52, 53, 54, 55)
13	712-0181		Hex Top L-Nut 3/8-16 1 hd.†	56	710-0157		Hex Bolt 5/16-24 x .75" Lg.
14	712-0287		Hex Nut 1/4-20 Thd.*	57	17493A		Deck Hanger Channel
17	734-0973		Deck Wheel—5"†	58	710-0599		Hex Wash. Hd. TT-Tap Scr.
18	736-0105		Bell-Wash. .40" I.D. x .88"				1/4-20 x .5" Lg.
			O.D.†	59	736-0242		Bell-Wash. .345" I.D. x .88"
19	736-0119		L-Wash. 5/16" I.D.*	60	17863		Skirt Ext.
20	736-0217		L-Wash. 3/8" I.D.—H.D	61	710-0167		Carr. Bolt 1/4-20 x .5" Lg.
22	738-0373		Shld. Bolt .498" Dia. x 1.53"†	62	712-0271		Hex Sems Nut 1/4-20 Thd.

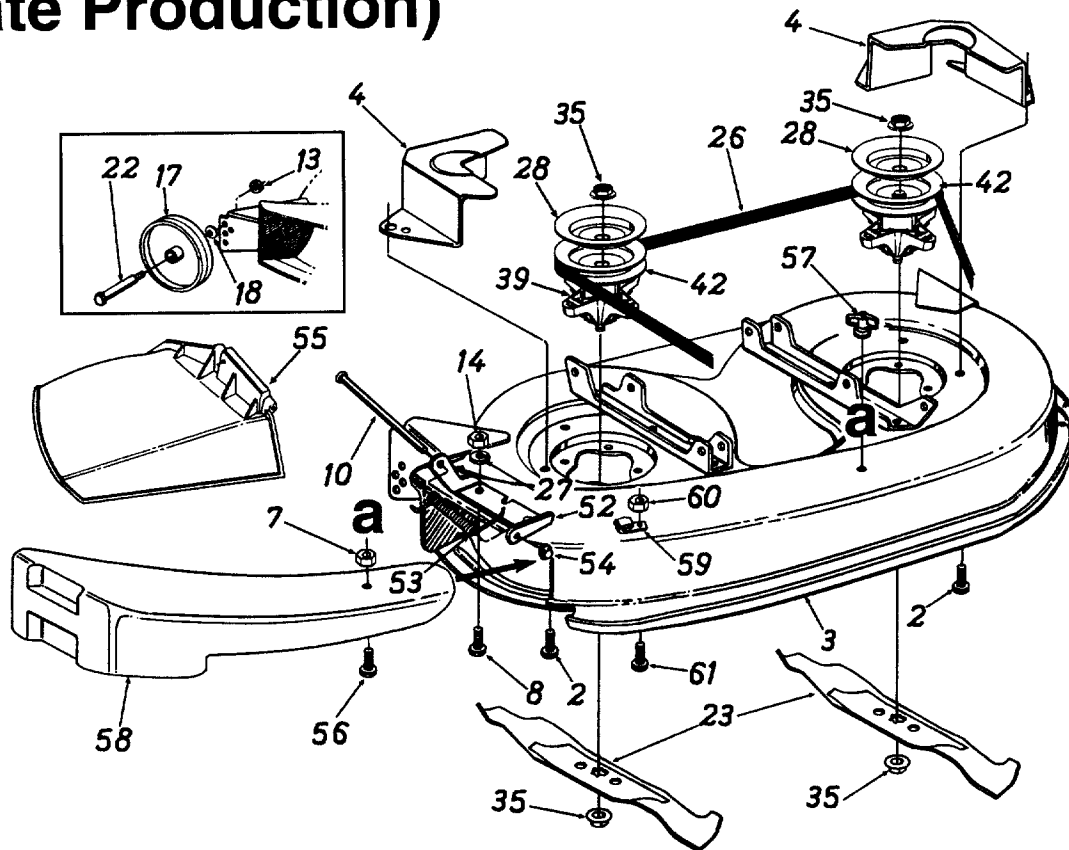
*For faster service obtain standard nuts, bolts and washers locally.
If these items cannot be obtained locally, order by part number
and size as shown on parts list.

†Optional Deck Assembly with Wheels.

Deck "F" (38")

Model 136A694F401 Only

(Late Production)



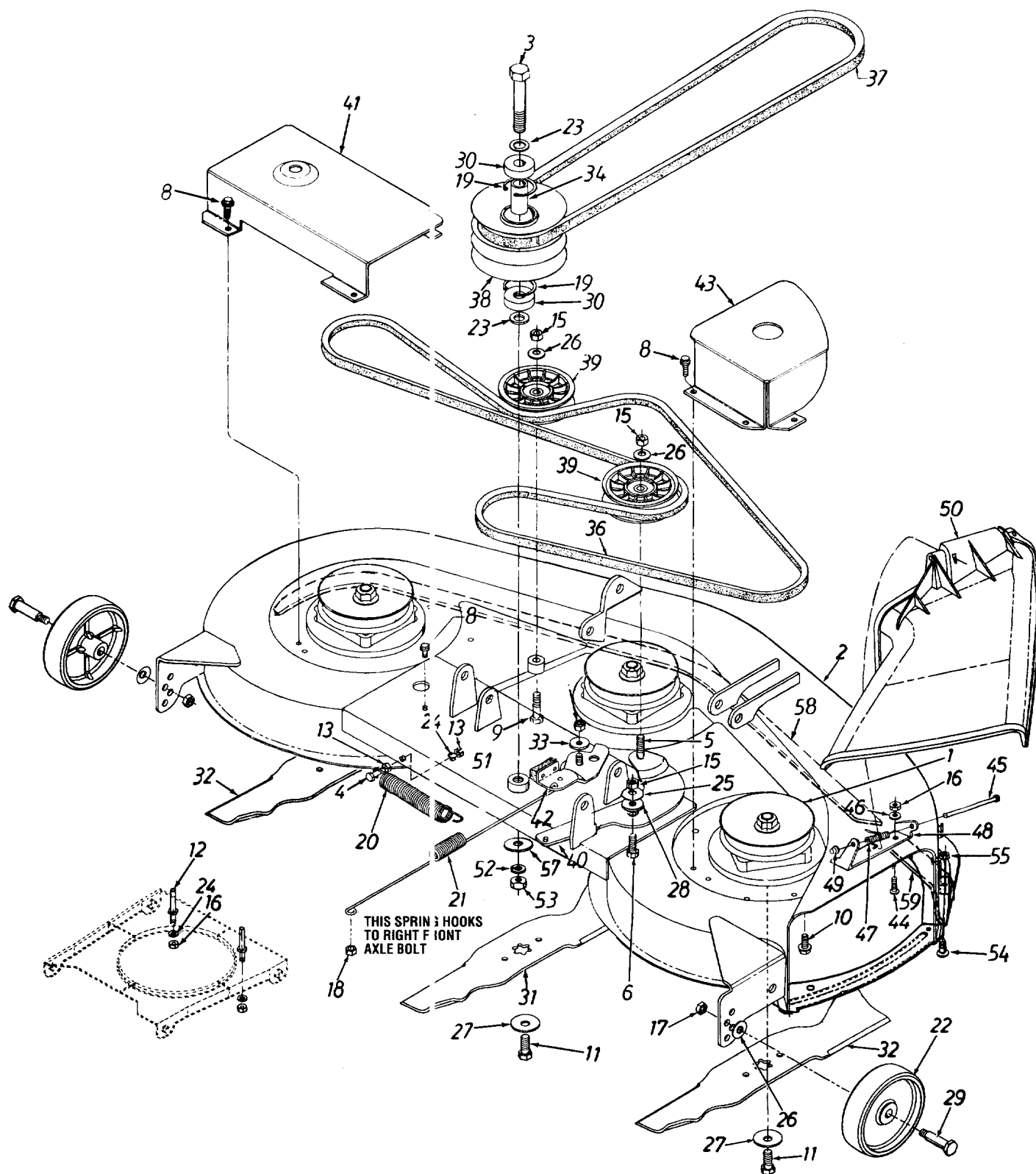
PARTS LIST FOR 38" MOWING DECK

REF. NO.	PART NO.	CODE	DESCRIPTION	REF. NO.	PART NO.	CODE	DESCRIPTION
2	710-1260		Hex Wash. Hd. TT-Tap Scr. 5/16-18 x .75" Lg.	33	710-0157		Hex Bolt 5/16-24 x .75" Lg.
3	683-0129	N	38" Deck Ass'y.	35	712-0417A		Hex Flange Nut 5/8-18 Thd.†
	813-06459	N	38" Deck Ass'y. Comp. (For Service Only)	37	736-0158		L-Wash. 5/8" I.D.*
4	783-0343	N	Belt Guard Deck	39	618-0138	N	Blade Spindle Ass'y. Comp. (Incl. Ref. 28, 35, 42)
7	712-0291		Hex L-Nut 1/4-20 Thd.	42	756-0969		5" Dia. Pulley†
8	710-0258		Hex Bolt 1/4-20 x .62"	52	703-1693		Hinge Mtg. Brkt.
10	711-0792		Hinge Pin	53	732-0602		Torsion Spring
13	712-0181		Hex Top L-Nut 3/8-16 Thd.	54	726-0106		Push Nut
14	712-3006		Hex Nut 1/4-20 Thd. (Gr. 5)	55	731-1032		Chute Ass'y. Comp. (Incl. Ref. 10, 52, 53, 54, 55)
17	734-0973		Deck Wheel—5"	56	710-0597		Hex Bolt 1/4-20 x 1" Lg.
18	736-0105		Bell-Wash. .40" I.D. x .88" O.D.	57	712-3087		Wing Nut 1/4-20 Thd.
22	738-0373		Shld. Bolt .498" Dia. x 1.53"	58	731-1643	N	Mulching Plug
23	742-0610	N	3 in 1 Blade	59	16606		Retainer Hook Brkt.
26	754-0329A		V-Belt	60	712-0271		Hex Sems Nut 1/4-20 Thd.
27	736-0270		Bell-Wash. 1/4" I.D.	61	710-0258		Hex Bolt 1/4-20 x .62" Lg.
28	783-0342		Brake Disc				

†Deck pulleys and blade nuts must be torqued to 100 ft. lbs. if removed or replaced.

*For faster service obtain standard nuts, bolts and washers locally.
If these items cannot be obtained locally, order by part number and size as shown on parts list.

Deck "H" (46")

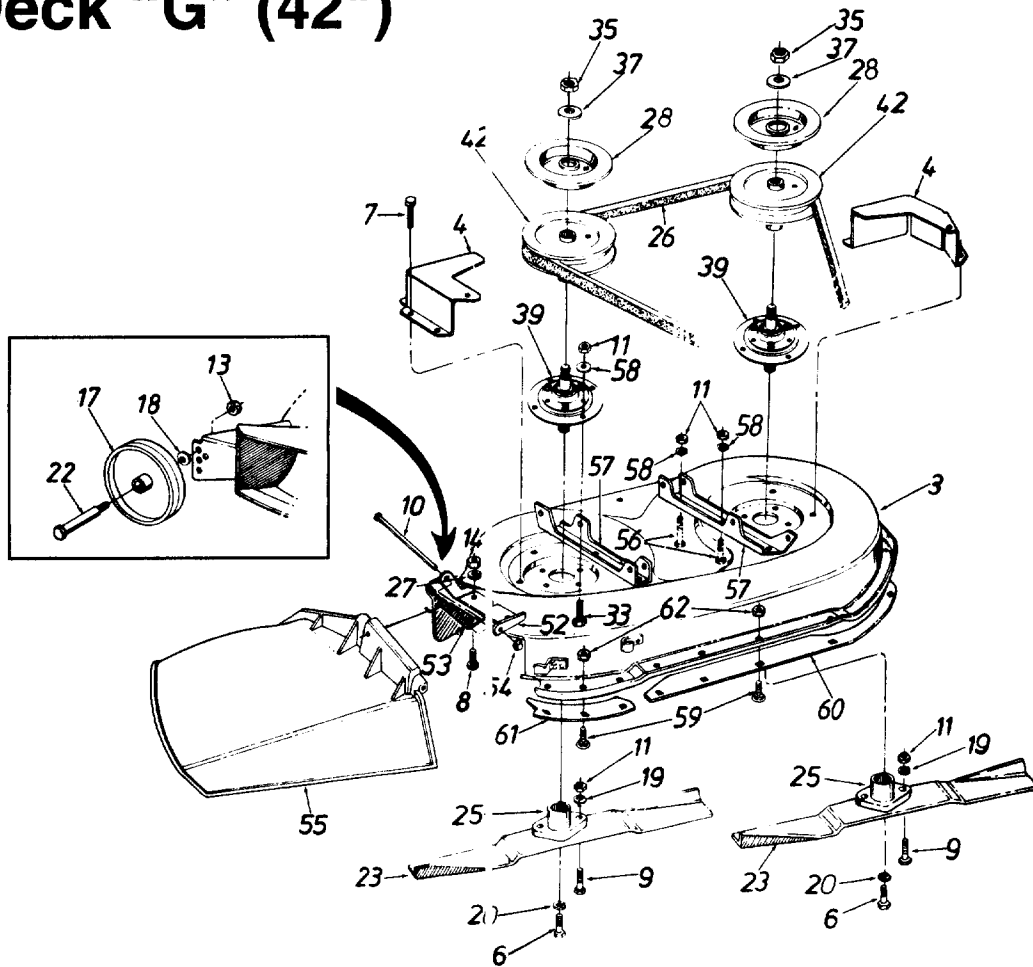


Deck "H"

PARTS LIST FOR 46" MOWING DECK

REF. NO.	PART NO.	CODE	DESCRIPTION	REF. NO.	PART NO.	CODE	DESCRIPTION
1	618-0116	N	Blade Spindle Ass'y.	29	738-0373	N	Shld. Bolt .498" x 1.525"
2	683-0067		46" Deck Ass'y.	30	741-0524		Ball Brg. .625" I.D. x 1.574"
	913-06921		46" Deck Ass'y. Comp.				O.D. x .47"
			(For Service)	31	742-0543		High Lift Blade 14.88" Lg.
3	710-3151		Hex Bolt 5/8-18 x 4.25" Lg.	32	742-0542		High Lift Blade 16.28" Lg.
4	710-0428		Hex Bolt 1/4-28 x 1.25" Lg.	33	748-0234		Shoulder Spacer
5	710-0459		Hex Bolt 3/8-24 x 1.5" Lg.	34	750-0932A		Spacer .635" I.D. x .088" O.D.
6	710-1039		Hex Bolt 3/8-24 x 1" Lg.	36	754-0440		V-Belt
8	710-0599		Hex Wash. Hd. TT-Tap Scr.	37	754-0439		V-Belt
			1/4-20 x .5" Lg.	38	756-0638		Pulley Double Deck 5" O.D.
9	710-0151		Hex Bolt 3/8-24 x 2" Lg.	39	756-0627		Flat Idler Pulley 3.5 O.D.
10	710-1260		Hex Flange Bolt 5/16-24 x .75"	40	783-0046		Idler Deck Bracket
			Lg.	41	783-0063A	N	Belt Cover L.H.
11	710-1262		Hex Patch L-Bolt 7/16-20 x	42	17116		Deck Brake Brkt. Ass'y.
			1" Lg.	43	17258A		Belt Cover Brkt. R.H.
12	711-0993		Belt Guard Pin	44	710-0258		Hex Bolt 1/4-20 x .62" Lg.
13	712-0138		Hex Nut 1/4-28 Thd.	45	711-0792		Hinge Pin
14	712-0429		Hex Ins. L-Nut 5/16-18 Thd.	46	736-0270		Bell-Wash. 1/4" I.D.
15	712-0241		Hex Nut 3/8-24 Thd.	47	732-0602		Torsion Spring
16	712-3006		Hex Nut 1/4-20 Thd. (Gr. 5)	48	703-1693		Hinge Mtg. Brkt.
17	712-0181		Hex Top Jam Nut 3/8-16 Thd.	49	726-0106		Push Nut
18	712-0158		Hex Center L-Nut 5/16-18 Thd.	50	731-1032		Chute Ass'y. Comp. (Incl. Ref.
19	716-3020		Int. Snap Ring				45, 47, 48, 49, 50)
20	732-0594A		Ext. Spring .88" O.D. x 6.17"	51	750-0960		Spacer .635" I.D. x 1" O.D.
21	732-0723		Ext. Spring .788" O.D. x 15.5"	52	736-0158		L-Wash. 5/8" I.D.
22	734-0973		Deck Wheel	53	712-0337		Hex Nut 5/8-18 Thd.
23	736-0290		Fl-Wash. .635" I.D. x 1" O.D. x	54	710-0167		Carriage Bolt 1/4-20 x .5" Lg.
			.06"	55	712-0271		Hex Sems Nut 1/4-20 Thd.
24	736-0329		L-Wash. 1/4" I.D.*	57	736-3088		Fl-Wash. .635" I.D.
25	736-0331		Bell-Wash. 3/8" x 1.125" x .062"	58	783-0141		Center Deck Skirt
26	736-0105		Bell-Wash. 3/8" x .87" x .064"	59	783-0142		R.H. Deck Skirt
27	736-0510		Bell-Washer				
28	738-0347		Shoulder Spacer .625" I.D. x				
			.169"				

Deck "G" (42")



PARTS LIST FOR 42" MOWING DECK

REF. NO.	PART NO.	CODE	DESCRIPTION	REF. NO.	PART NO.	CODE	DESCRIPTION
3	97600A	N	42" Deck Ass'y.	26	754-0371A		V-Belt
	913-06119	N	42" Deck Ass'y. Comp. (For Service Only)	27	736-0270		Bell-Wash. 1/4" I.D.
4	17664		Belt Guard Deck	28	09322		Brake Disc
6	710-0152		Hex Bolt 3/8-24 x 1.0" Lg.	33	710-0157		Hex Bolt 5/16-24 x .75" Lg.
7	710-0599		Hex Wash. Hd. TT-Ta x Scr. 1/4-20 x .5" Lg.	35	712-0318		Hex Jam Nut 5/8-18 Thd.
8	710-0258		Hex Bolt 1/4-20 x .62"	37	736-0158		L-Wash. 5/8" I.D.*
9	710-0888		Hex Bolt Special 5/16-24 x 1.0"	39	917-0906A	N	Blade Spindle Ass'y. Comp.
10	711-0792		Hinge Pin	42	756-0556		5.5" Dia. Pulley
11	712-0123		Hex Nut 5/16-24 Thd.*	52	703-1693		Hinge Mtg. Brkt.
13	712-0181		Hex Top L-Nut 3/8-16 Thd.	53	732-0602		Torsion Spring
14	712-0287		Hex Nut 1/4-20 Thd.*	54	726-0106		Push Nut
17	734-0973		Deck Wheel—5"	55	731-1032		Chute Ass'y. Comp. (Incl. Ref. 10, 52, 53, 54, 55)
18	736-0105		Bell-Wash. .40" I.D. x .88" O.D.	56	710-0157		Hex Bolt 5/16-24 x .75" Lg.
19	736-0119		L-Wash. 5/16" I.D.*	57	17493A		Deck Hanger Channel
20	736-0217		L-Wash. 3/8" I.D.—H.I.D.	58	736-0242		Bell-Wash. .345" I.D. x .88"
22	738-0373		Shld. Bolt .498" Dia. x 1.53"	59	710-0167		Carr. Bolt 1/4-20 x .5" Lg.
23	742-0499A		High-Lift Blade	60	17861A		Deck Skirt Ext.—Long
25	748-0300		Blade Adapter	61	17961		Deck Skirt Ext.—Short
				62	712-0271		Hex Sems Nut 1/4-20 Thd.

*For faster service obtain standard nuts, bolts and washers locally.
If these items cannot be obtained locally, order by part number
and size as shown on parts list.