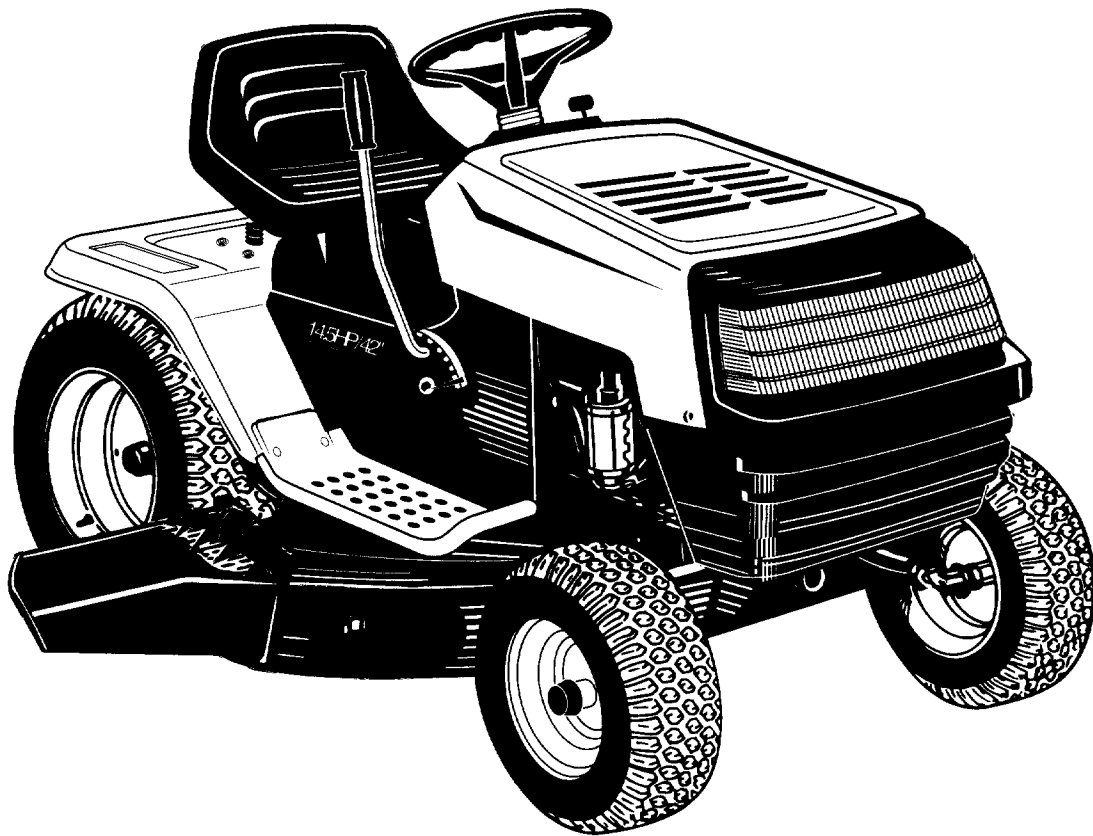




# Illustrated Parts Book



## Model Numbers

690 thru 699

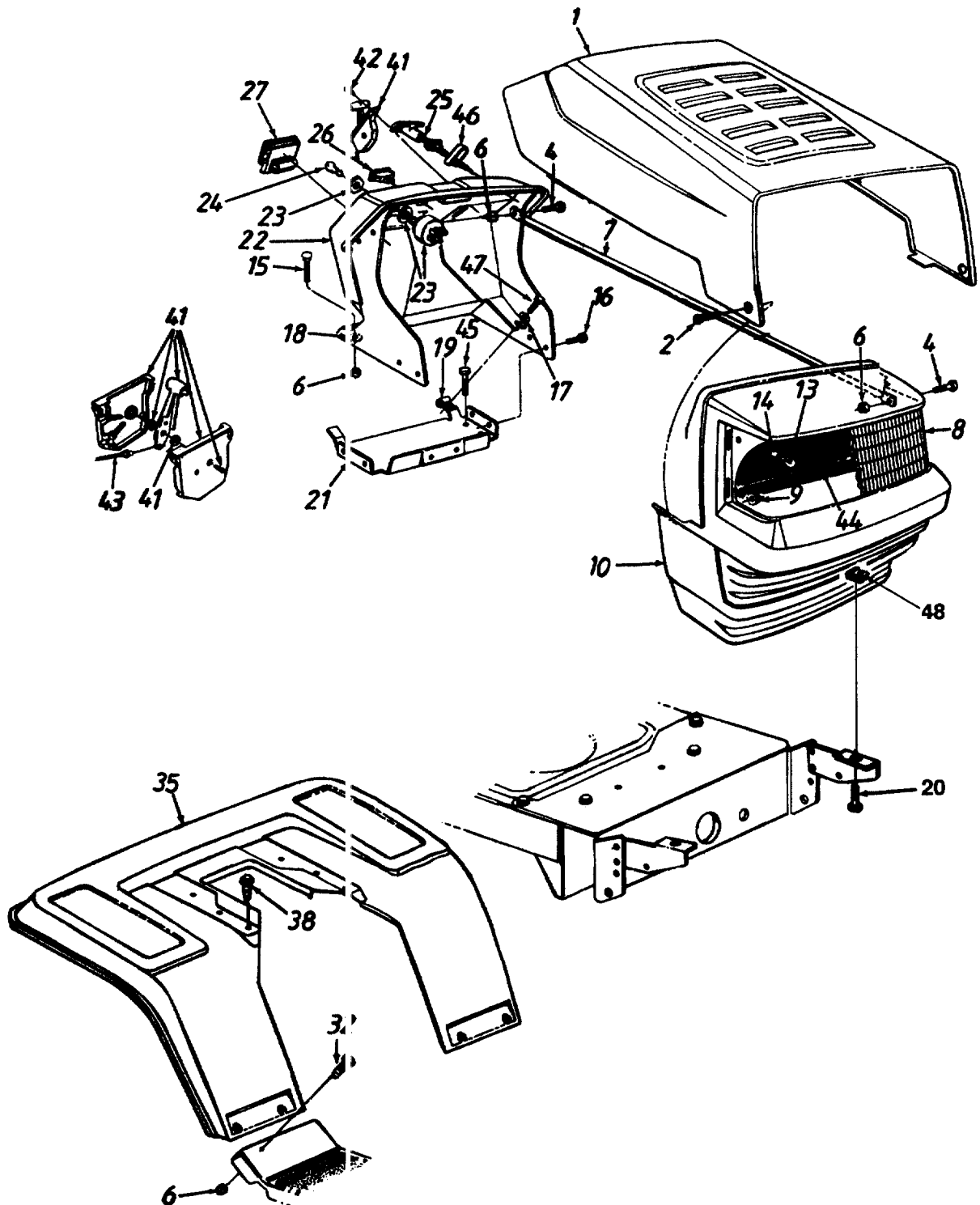
**1997**

**MTD PRODUCTS INC • P.O. BOX 368022 • CLEVELAND, OHIO 44136-9722**

PRINTED IN U.S.A.

FORM NO. 770-97-3E

# Style 0

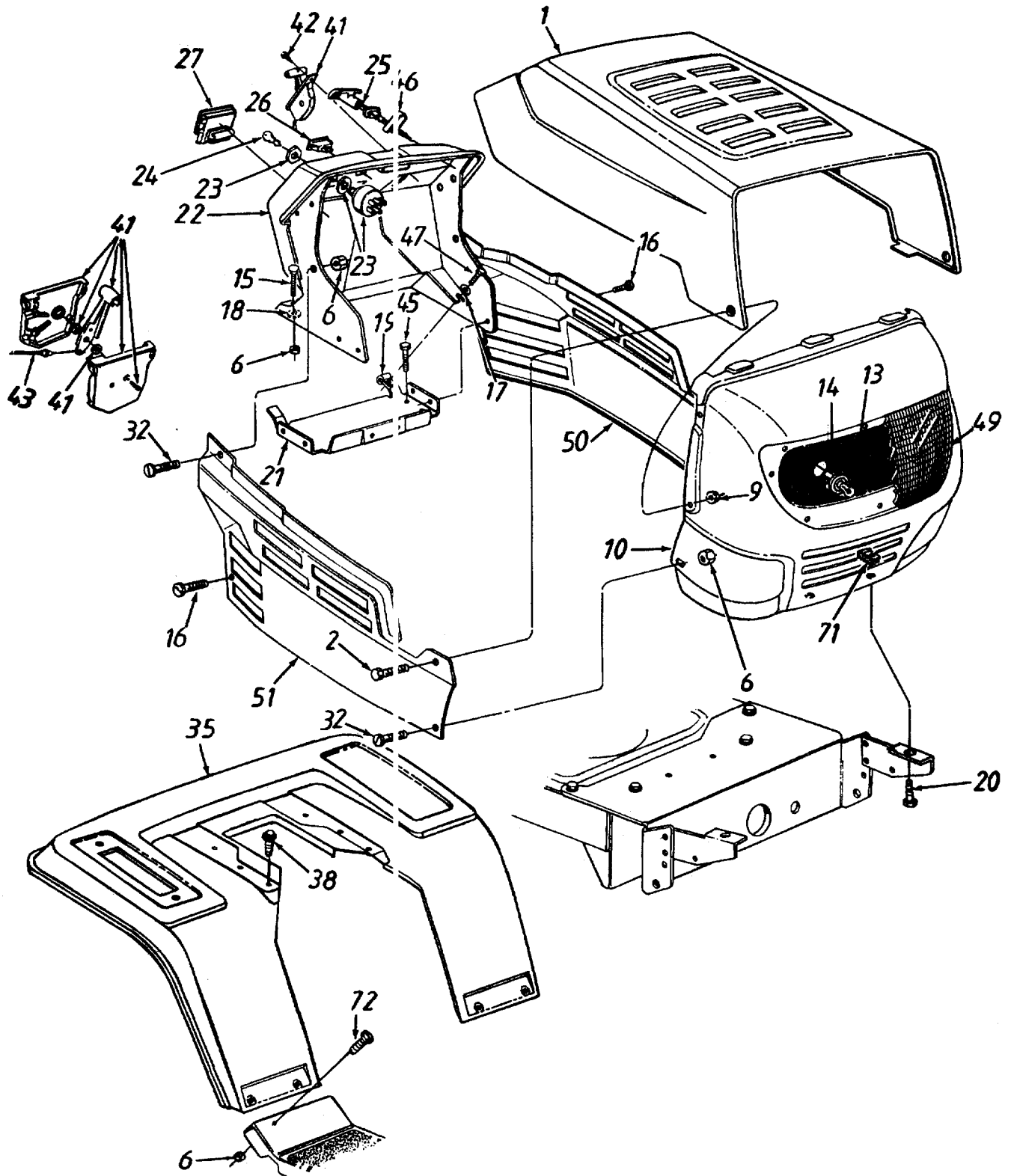


le 0

F. NO.	PART NO.	CODE	DESCRIPTION	REF. NO.	PART NO.	CODE	DESCRIPTION
	783-0250		Hood	25	746-0616A		Choke Control 23" Lg.
	738-0952		Shld. Bolt .375" Dia. x .125" Lg.		746-0614A		Choke Control 38" Lg.
	710-0258		Hex Bolt 1/4-20 x .62" Lg.*		746-0720		Choke Control 20" Lg.
	712-0271		Hex Sems Nut 1/4-20 Thd.		746-3021		Choke Control 29" Lg.
	749-0812		Grille Support Rod	26	725-0634		Light Switch**
	731-1099A		Headlight Lens w/o Logo	27	725-0925		Ammeter**
	731-1767	N	Headlight Lens w/ Logo	32	710-0286		Truss Mach. Scr. 1/4-20 x .5" Lg.
	712-3027		Flange L-Nut 1/4-20 Thd.	35	17871B		Fender w/Cutout
	731-1097D		Grille	38	710-0726		Hex Wash. Hd. AB-Tap Scr.5/16 x .75" Lg.
	725-0963		Lamp				Throttle Box Ass'y.
	725-1649		Socket	41	831-0823A		Truss Mach. AB-Tap Scr.#10 x .5" Lg.
	710-0703		Carriage Bolt 1/4-20 x .75" Lg.	42	710-0779A		Throttle Control Wire 18.5" Lg.
	710-0599		Hex Wash. Hd. TT-Tap Scr. 1/4-20 x .5" Lg.	43	746-0776		Throttle Control Wire 35" Lg.
	736-0173		Fl-Wash. .281" I.D. x .73" O.D.		746-0634		Throttle Control Wire 22" Lg.
	726-0233		Bolt Retainer 1/4" I.D.	44	777-9206		Grille Reflector Label
	712-0185		Speed Nut 1/4-20 Thd.	45	710-0603		Hex Wash. Hd. B-Tap Scr.5/16-18 x .5" Lg.
	710-0118		Hex Bolt 5/16-18 x .75" Lg.				Choke Retainer
	17632A		Gas Tank Support Brkt.	46	17782		Hex TT-Tap Scr. 1/4-20 x .75" Lg.
	731-1096B		Dash w/Ammeter Hole	47	710-0642		U-Nut 5/16-18 Thd.
	731-1337A		Dash w/o Ammeter Hole	48	726-0211		Headlight Harness (Not Shown)
	725-0267		Ignition Switch	-	629-0308		
	725-0201		Ignition Key				

\*\* Optional Parts

# Style 3

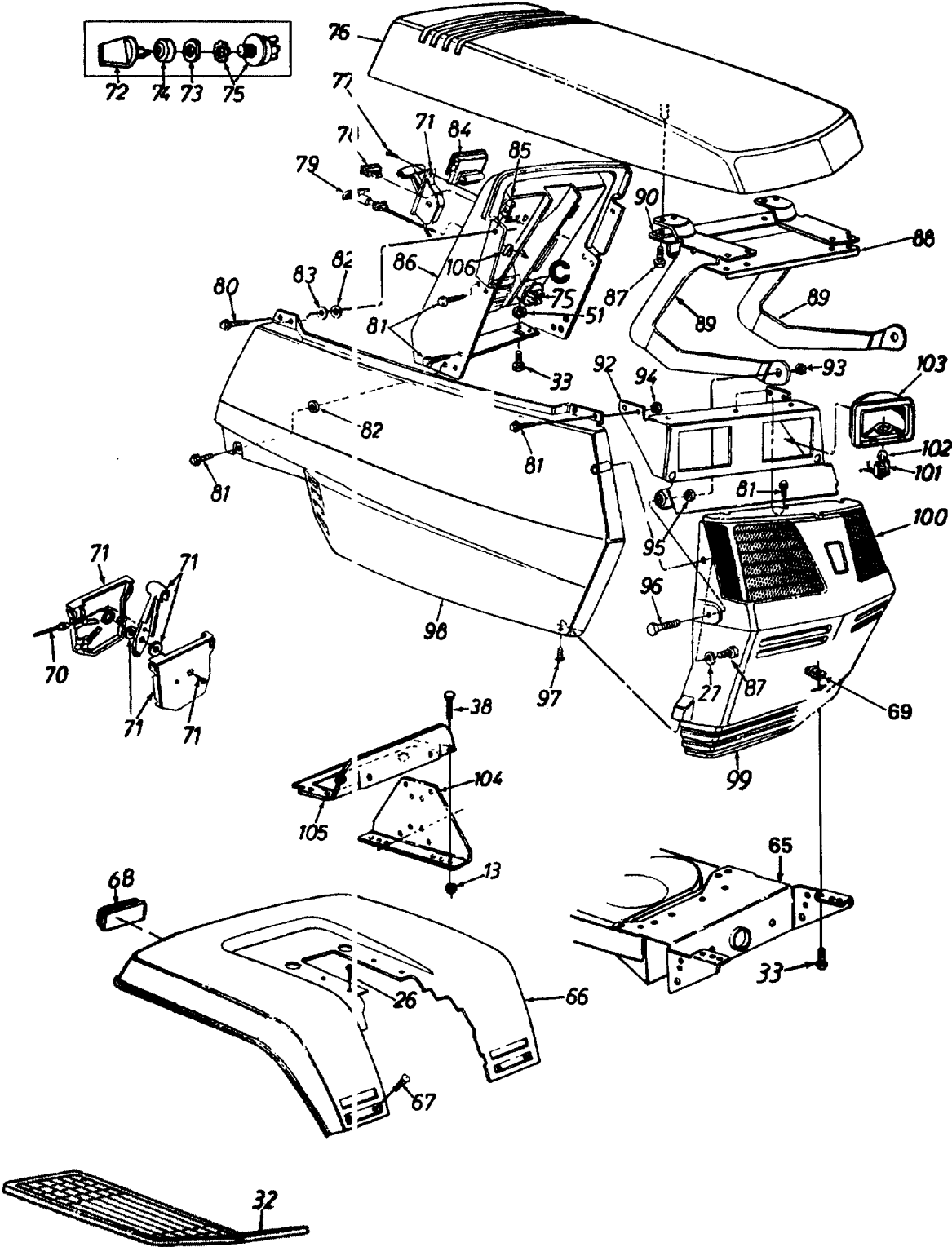


### yle 3

REF. NO.	PART NO.	CODE	DESCRIPTION	REF. NO.	PART NO.	CODE	DESCRIPTION
1	783-0250		Hood	26	725-0634		Light Switch**
2	738-0952		Shld. Bolt .375" Dia. x .125" Lg.	27	725-0925		Ammeter**
3	712-0271		Hex Sems Nut 1/4-20 Thd.	32	710-0286		Truss Mach. Scr. 1/4-20 x .5" Lg.
3	712-3027		Flange L-Nut 1/4-20 Thd.	35	17871B		Fender
0	783-0156A		Grille	38	710-0726		Hex Wash. Hd. AB-Tap Scr. 5/16 x .75" Lg.
3	725-0963		Lamp				Throttle Box Ass'y.
4	725-1651		Socket	41	831-0823A		Truss Mach. AB-Tap Scr. #10 x .5" Lg.
5	710-0703		Carriage Bolt 1/4-20 x .75" Lg.	42	710-0779A		Throttle Control Wire 18.5" Lg.
6	710-0599		Hex Wash. Hd. TT-Tap Scr. 1/4-20 x .5" Lg.	43	746-0776		Throttle Control Wire 35" Lg.
7	736-0173		FI-Wash. .281" I.D. x .73" O.D.		746-0634		Throttle Control Wire 22" Lg.
8	726-0233		Bolt Retainer 1/4" I.D.		746-0638		Hex Wash. Hd. B-Tap Scr. 5/16-18 x .5" Lg.
9	712-0185		Speed Nut 1/4-20 Thd.	45	710-0603		Choke Retainer
0	710-0118		Hex Bolt 5/16-18 x .75" Lg.				Hex TT-Tap Scr. 1/4-20 x .75" Lg.
1	17632A		Gas Tank Support Brkt.	46	17782		Lens
2	731-1096B		Dash w/Ammeter Hole	47	710-0642		Side Panel-L.H.
	731-1337A		Dash w/o Ammeter Hole	49	731-1503A		Side Panel-R.H.
3	725-0267		Ignition Switch	50	783-0151		U-Nut 5/16-18 Thd.
4	725-0201		Ignition Key	51	783-0150A		Headlight Harness (Not Shown)
5	746-0616A		Choke Control 23" Lg.	71	726-0211		
	746-0614A		Choke Control 38" Lg.	-	629-0309		
	746-3021		Choke Control 29" Lg.				
	746-0720		Choke Control 20" Lg.				

### Optional Parts

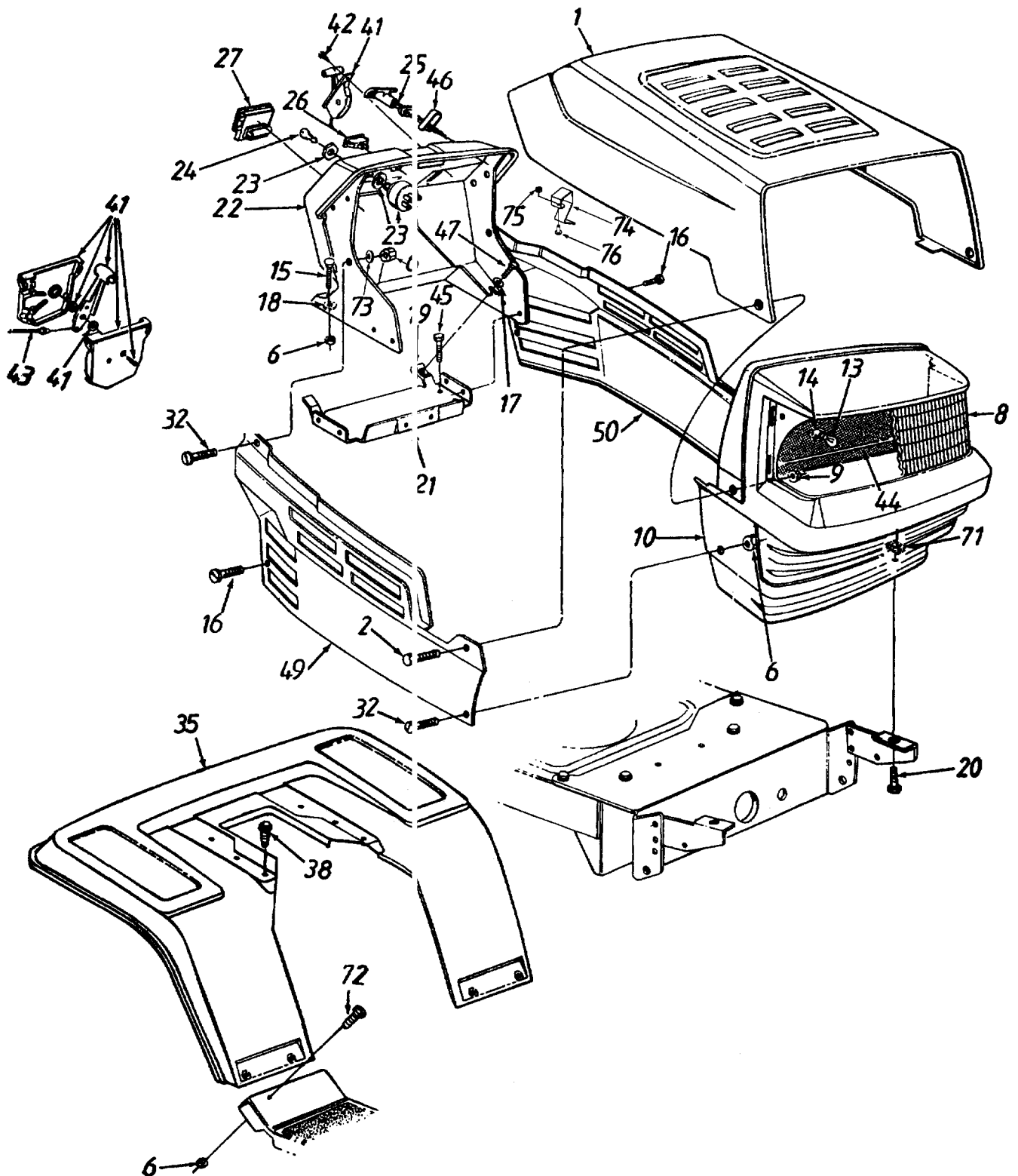
Style 4



# yle 4

EF. O.	PART NO.	CODE	DESCRIPTION	REF. NO.	PART NO.	CODE	DESCRIPTION
3	712-0271		Hex Sems Nut 1/4-20 Thd.	82	726-0233		Push Nut Fastener
6	710-0726		Hex Wash. Hd. AB-Tap Scr.5/16 x .75" Lg.	83	736-0176		FI-Wash. .27" I.D. x .948"
7	736-0142		FI-Wash. .218" I.D. x .5" O.D.	84	725-0925		Ammeter
12	731-0911		Rubber Foot Pad-L.H. (Optional)	85	712-0185		Speed Nut 1/4-20 Thd.
	731-0912		Rubber Foot Pad-R.H. (Optional)	86	731-0961A		Dash Panel
13	710-0118		Hex Bolt 5/16-18 x .75" Lg.*	87	710-1005		Hex Wash. Hd. B-Tap Scr.1/4 x .75" Lg.
18	710-0258		Hex Bolt 1/4-20 x .62" Lg.*	88	783-0121		Hood Reinforcement
11	712-0265		Hex Sems Nut 5/16-18 Thd.	89	783-0123		Hood Hinge
15	783-0041A		Pivot Bar Brkt.	90	17762		Hood Reinforcement Spacer
16	783-0350		Fender	92	17223		Light Bracket
17	710-0167		Carriage Bolt 1/4-20 x .62" Lg.	93	712-0158		Hex L-Nut 5/16-18 Thd.
18	725-3000		Reflector (Optional)	94	712-0107		Hex L-Nut 1/4-20 Thd.
19	726-0211		U-Nut 5/16-18 Thd.	95	712-3007		Hex Jam Nut 5/16-18 Thd.
0	746-0776		Throttle Wire 18.5" Lg.	96	710-0874		Hex Bolt 5/16-18 x 7/8" Lg.
	746-0634		Throttle Wire 35" Lg.	97	710-0351		Truss Mach. B-Tap Scr. #10 x .5" Lg.
	746-0636		Throttle Wire 28" Lg.	98	731-1434		Side Cover-R.H.
1	831-0823A		Throttle Control Box Ass'y.		731-1435		Side Cover-L.H. (Not Shown)
2	725-1341B		Ignition Key	99	731-1442A		Grille
3	725-1346		Ignition Switch Nut	100	731-0949		Lens-L.H.
4	725-1347		Ignition Switch Cap		731-0948		Lens-R.H.
5	725-1396		Ignition Switch	101	725-1650		Twist Lock-Lamp Socket
6	731-1433		Hood	102	725-0963		Lamp
7	710-0779A		Truss Mach. AB-Tap Scr. #10 x.5" Lg.	103	731-0705		Headlight Housing
8	725-0634		Light Switch	104	17300D		Dash Support Brkt.
9	746-3021		Choke Control 29" Lg.	105	17633A		Support Brkt.
	746-0614A		Choke Control 38" Lg.	106	17782		Choke Retainer
10	710-0642		Hex Wash. Hd. Tap Scr. 1/4 x .75" Lg.	—	629-0309		Headlight Harness (Not Shown)
11	710-0599		Hex Tap Scr. 1/4-20 x .5" Lg.				

# Style 5



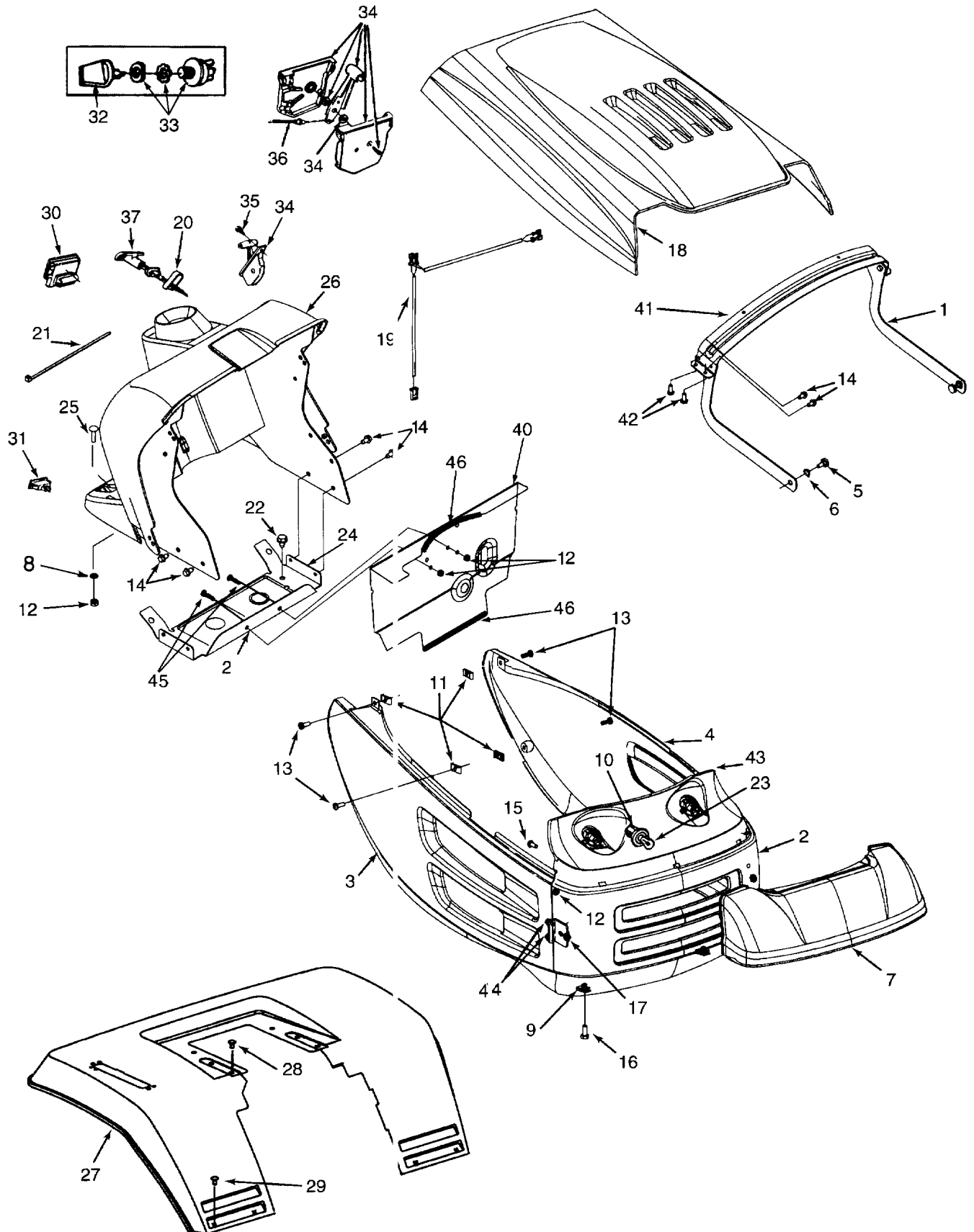


## yle 5

EF. O.	PART NO.	CODE	DESCRIPTION	REF. NO.	PART NO.	CODE	DESCRIPTION
1	783-0250	N	Hood	26	725-0634		Light Switch**
2	738-0952		Shld. Bolt .375" Dia. x .125" Lg.	27	725-0925		Ammeter**
6	712-0271		Hex Sems Nut 1/4-20 Thd.	32	710-0286		Truss Mach. Scr. 1/4-20 x .5" Lg.
8	731-1099A		Headlight Lens w/o Logo	35	17871B		Fender w/Cutout
	731-1767		Headlight Lens w/ Logo	38	710-0726		Hex Wash. Hd. AB-Tap Scr.5/16 x .75" Lg.
9	712-3027		Flange L-Nut 1/4-20 Thd.				Throttle Box Ass'y.
0	731-1097D		Grille	41	831-0823A		Truss Mach. AB-Tap Scr.#10 x .5" Lg.
1	736-3078		FI-Wash. .344" I.D. x 1" O.D.	42	710-0779A		Throttle Control Wire 18.5" Lg.
2	712-0267		Hex Nut 5/16-18 Thd.*	43	746-0776		Throttle Control Wire 35" Lg.
3	725-0963		Lamp		746-0634		Throttle Control Wire 22" Lg.
4	725-1649		Socket		746-0638		Grille Reflector Label
5	710-0703		Carriage Bolt 1/4-20 x .75" Lg.	44	777-9206		Hex Wash. Hd. B-Tap Scr.5/16-18 x .5" Lg.
6	710-0599		Hex Wash. Hd. TT-Tap Scr.1/4-20 x .5" Lg.	45	710-0603		Choke Retainer
7	736-0173		FI-Wash. .281" I.D. x .73" O.D.	46	17782		Hex TT-Tap Scr. 1/4-20 x .75" Lg.
8	726-0233		Bolt Retainer 1/4" I.D.	47	710-0642		Side Panel-R.H.
9	712-0185		Speed Nut 1/4-20 Thd.	49	783-0150A		Side Panel-L.H.
0	710-0118		Hex Bolt 5/16-18 x .75" Lg.	50	783-0151		U-Nut 5/16-18 Thd.
1	17632A		Gas Tank Support Brkt.	71	726-0211		Truss Mach. Scr. 1/4-20 x .5" Lg.
2	731-1096B		Dash w/Ammeter Hole	72	710-0286		FI-Wash. .283" I.D. x .75" Lg.
	731-1337A		Dash w/o Ammeter Hole	73	736-0342		Hood Latch **
3	725-0267		Ignition Switch	74	732-0835		Hex Sems Nut 10-24 Thd. **
4	725-0201		Ignition Key	75	712-0272		Truss Mach. Scr. 10-24 x .5" Lg. **
5	746-0616A		Choke Control 23" Lg.	76	710-0473		
	746-0614A		Choke Control 38" Lg.				
	746-3021		Choke Control 29" Lg.				
	746-0720		Choke Control 20" Lg.				

### Optional Parts

## Style 8



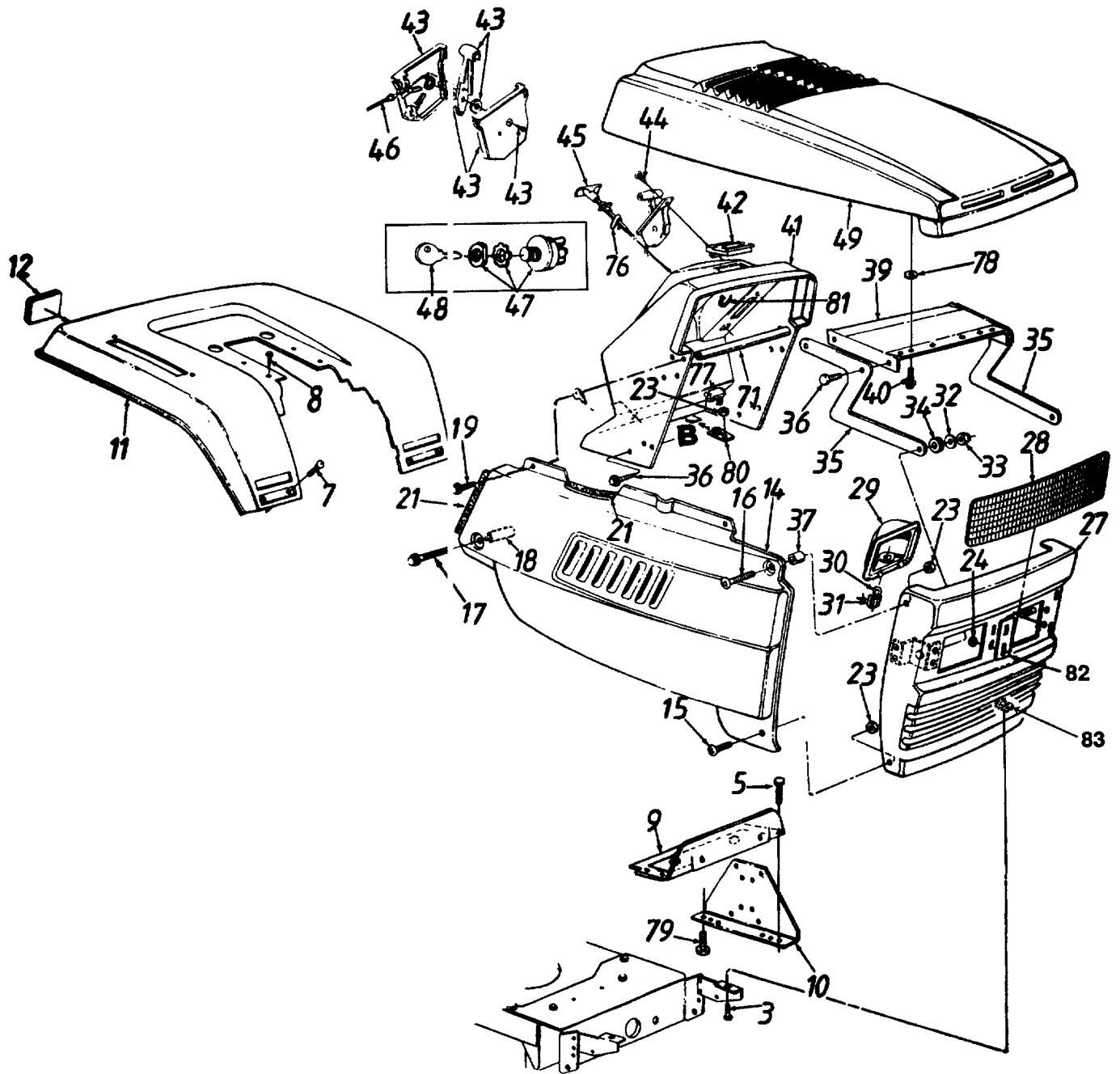
## TYLE 8

Ref No.	Part No.	Code	Description	Ref No.	Part No.	Code	Description
1	783-0551	N	Hood Brkt.	26	731-1852	N	Dash Panel
2	783-0477	N	Grille	27	783-0350		Fender
3	783-0476	N	Side Panel -R.H.	28	710-0726		Hex Wash. Hd. Tap Scr. 5/16 x .75" Lg.
4	783-0475	N	Side Panel - L.H.	29	710-0286		Truss Mach. Scr. 1/4-20 x .5" Lg.
5	738-0255		Shld. Bolt .375" Dia.	30	725-0925		Ammeter
6	736-0413		Spr. Wash. .39" I.D. x .62" O.D.	31	725-0634		Light Switch
7	731-1854	N	Lens	32	725-0201		Ignition Key
8	726-0233		Retainer Nut	33	725-0267		Ignition Switch
9	726-0211		U - Nut 5/16-18 Thd	34	831-0823A		Throttle Box Ass'y.
10	725-1651		Socket	35	710-0779A		Truss Mach. AB-Tap Scr. #10 x .5"
11	712-0292		Tinn. Nut 1/4-20 Thd.	36	746-0776		Throttle Control Wire 18.5 " Lg.
12	712-0271		Hex Sems Nut 1/4-20 Thd.		746-0638		Throttle Control Wire 22" Lg.
13	710-0924		Pan Hd. Mach. Scr. 1/4-20 x .75" Lg.		746-0634		Throttle Control Wire 35" Lg.
14	710-0599		Hex Wash. Hd. TT-Tap Scr. 1/4-20 x .5" Lg.	37	746-0720		Choke Control 20" Lg.
15	710-0258		Hex Bolt 1/4-20 x .625" Lg.		746-0616A		Choke Control 23" Lg.
16	710-0118		Hex Bolt 5/16-18 x .75" Lg.		746-3021		Choke Control 29" Lg.
17	683-0168	N	Hood Pivot Brkt. Ass'y.		746-0614A		Choke Control 38" Lg.
18	683-0167	N	Hood	40	16988A		Engine Baffle †
19	629-0308		Headlight Harness	41	783-0553	N	Hood Brkt. Support
20	17782		Choke Retainer	42	710-0351		Pan Hd. Scr. #10-16 x .5" Lg.
21	725-0157		Cable Tie	43	726-0293		Retainer Nut
22	710-0607		Hex Wash. Hd. Tap Scr. 5/16-18 x .5" Lg.	44	710-0896		Hex Wash. Hd. AB-Tap Scr. 1/4-14 x .625" Lg.
23	725-0963		Lamp	45	710-0166		Pan Hd. Scr. 1/4-20 x 1" Lg.†
24	17632A		Gas Tank Support Brkt.	46	731-0511-15		Trim Strip †
25	710-0703		Carriage Bolt 1/4-20 x .75" Lg.				

&S Twin Cylinder Engine Only.

\*For faster service obtain standard nuts, bolts and washers locally. If these items cannot be obtained locally, order by part number and size as shown on parts list.

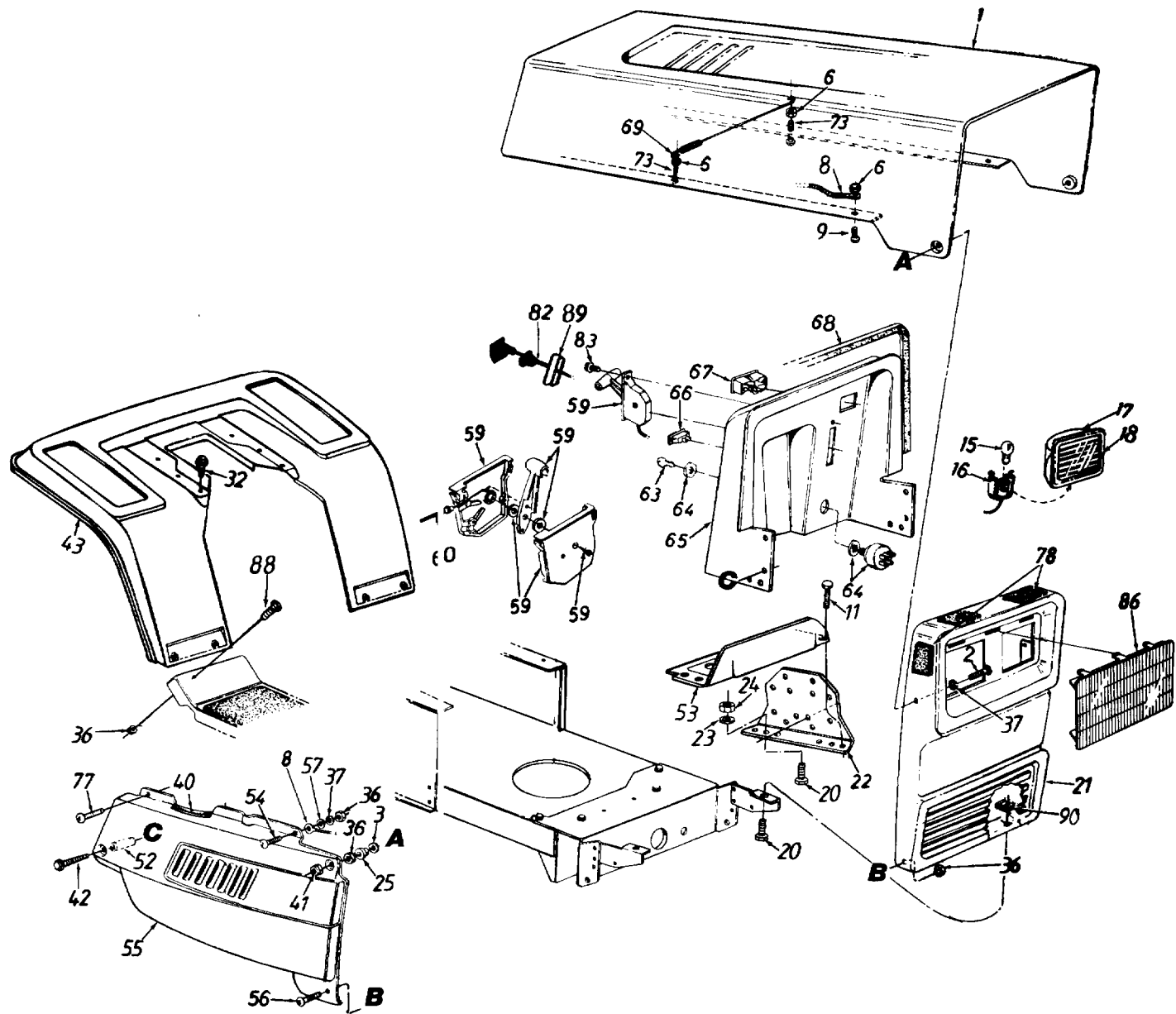
# Style 9



yle 9

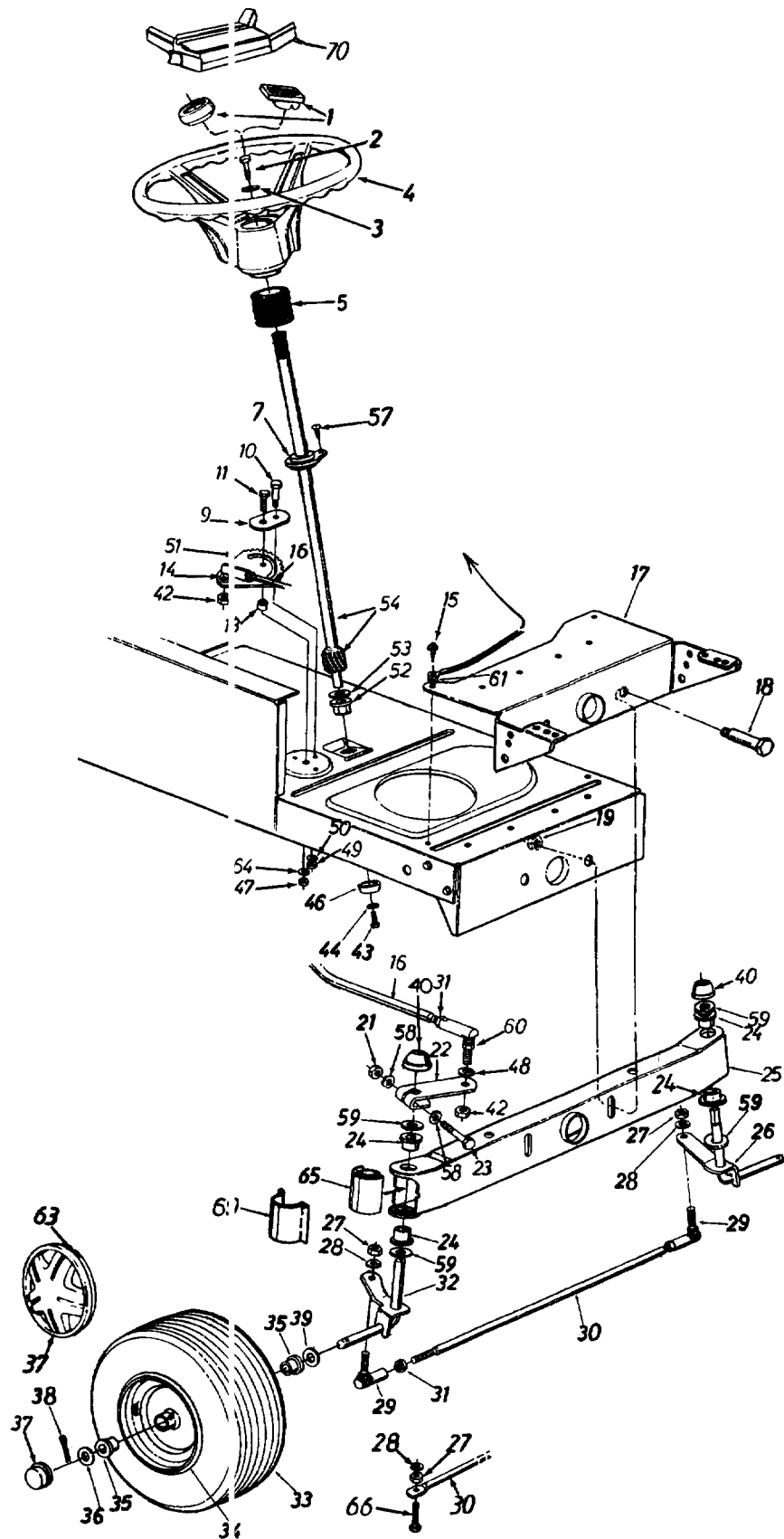
EF. O.	PART NO.	CODE	DESCRIPTION	REF. NO.	PART NO.	CODE	DESCRIPTION
3	710-0118		Hex Bolt 5/16-18 x .75" Lg.	37	750-0218		Spacer .262" I.D. x .31"
5	710-0603		Hex Wash. Hd. Scr. 5/16" x .5" Lg.	39	16903A		Hood Plate
7	710-0286		Truss Mach. Scr. 1/4-20 x .5" Lg.	40	710-1005		Hex Wash. Hd. Tap Scr. 1/4-20 x .5" Lg.
3	710-0726		Hex Wash. Hd. Tap Scr. 5/16 x .75" Lg.	41	731-1048B		Dash
9	17633A		Support Bracket	42	725-0925		Ammeter
0	17300D		Dash Support Bracket	43	831-0823A		Throttle Control Box Ass'y.
1	783-0350		Rear Fender	44	710-0919		Mach. Scr. #10 x .44" Lg.
2	730-3000		Reflector (Optional)	45	746-0616A		Choke Control 23" Lg.
4	16725		Side Panel-R.H. †		746-0614A		Choke Control 38" Lg.
	17309B		Side Panel-L.H. (Not Shown) †		746-3021		Choke Control 29" Lg.
	17458A		Side Panel w/Foam-R.H. ††		746-0720		Choke Control 20" Lg.
	17459A		Side Panel Ass'y. w/Foam-L.H.(Not Shown) ††	46	746-0776		Throttle Control Wire 18.5" Lg.
5	710-0286		Truss Mach. Scr. 1/4-20 x .5" Lg.		746-0634		Throttle Control Wire 35" Lg.
6	710-0166		Truss Mach. Scr. 1/4-20 x 1.0" Lg.	47	725-0267		Throttle Control Wire 22" Lg.
7	710-1026		Hex Wash. TT-Tap Scr. 1/4-20 x 1.75" Lg.	48	725-0201		Ignition Switch
				49	731-1491		Ignition Key
8	750-0768		Spacer .26" I.D. x 1.32"		731-1492		Hood-Red
9	710-0642		Hex Rolling Tap Scr. 1/4-20 x .75" Lg.		731-1497		Hood-Midnight Blue
1	731-0511-18		Trim Strip-18" Lg.		731-1704		Hood-Oyster Gray
2	736-0329		L-Wash. 1/4" I.D.*		731-1893		Hood-Evergreen
3	712-0271		Hex Sems Nut 1/4-20 Thd.	71	749-0814		Hood-Black
4	726-0201		Speed Nut 5/16" Thd.	73	736-0607		Grille Support Tube
7	17410		Grille Ass'y.	76	17782		External L-Wash. 5/16" I.D.
8	731-1044		Headlight Lens	77	725-0634		Choke Retainer
9	731-0705		Headlamp Housing	78	736-3010		Light Switch
0	725-0963		Headlamp	79	710-0206		FI-Wash. .406" I.D. x .812" O.D.
1	725-1650		Twist Lock Lamp Socket	80	783-0013		Hex Bolt 1/4-20 x .88" Lg.
2	736-0242		Bell-Wash. .345" I.D. x .88"	81	725-0157		Dash Fastening Tab
3	712-0429		Hex L-Nut 5/16-18 Thd.	82	777-8568A		Cable Tie
4	735-0126		Rubber Washer	83	726-0211		Chrome Label
5	783-0190		Hood Hinge				U-Nut 5/16-18 Thd.
3	710-0599		Hex Wash.Hd.B-Tap Scr. 1/4-20 x .5"				

# Style A



# yle A

f.	Part No.	Code	Description	Ref. No.	Part No.	Code	Description
.	16787B		Hood	56	710-0286		Truss Mach. Scr. 1/4-20 x .50"Lg.*
!	710-0206		Hex Bolt 1/4-20 x .88" Lg.	57	736-0173		Fl-Wash. .281" I.D. x .73" O.D.
!	736-0413		Washer .39" I.D. x .62"	59	831-0823A		Throttle Control Box Ass'y.
!	712-0272		Hex Sems Nut #10-24 Thd.*	60	746-0776		Throttle Control Wire 18.5" Lg.
!	727-0290A		Hood Stop		746-0634		Throttle Control Wire 35" Lg.
!	710-0473		Truss Hd. Scr. #10-24 x 1/2"*	63	725-0201		Ignition Key
!	710-0603		Hex Wash. Hd. B-Tap Scr.5/16-18 x .5" Lg.	64	725-0267		Ignition Switch
5	725-0963		Bulb	65	17295		Dash Panel
3	725-1650		Twist Lock Bulb Socket	66	725-0634		Light Switch
7	731-0705		Headlight Housing	67	725-0925		Ammeter
3	731-0706		Lens	68	731-0511-31		Trim Strip 31"
!	710-0118		Hex Bolt 5/16-18 x .75" Lg.*	69	732-0462		Hood Spring
!	15806B		Grille	73	710-0749		Hex Scr. #10-24 x 1.0" Lg.
	16456C		Grille Used w/Headlight Bezel	77	710-0642		Hex Wash. Hd. Tap Scr.1/4 x .75" Lg.
2	17300D		Dash Support Bracket	78	722-0157		Foam Strip 3/8 x 1-1/8" x 1-1/2 Lg. (4 Req'd.)
3	736-0119		L-Wash. 5/16" I.D.*				Choke Control 29" Lg.
!	712-0267		Hex Nut 5/16-18 Thd.*	82	746-0615A		Choke Control 46" Lg.
!	738-0759		Shld. Spacer		746-0613A		Truss Mach. AB-Tap Scr.#10 x .5" Lg.
!	712-0271		Hex Sems Nut 1/4-20 Thd.*	83	710-0779A		Headlight Bezel**
!	731-0511-12		Trim Strip 12"	86	731-0967		Truss Mach. Scr. 1/4-20 x .5" Lg.
	712-0264		Acorn Nut 1/4-20 Thd.	88	710-0286		Retainer Clip
!	710-1026		Hex TT-Tap Scr. 1/4-20 x 1.75"	89	17782		Headlight Harness (Not Shown)
!	17871B		Rear Fender	—	629-0309		
!	750-0768		Spacer 1.32" Lg.				
!	17633A		Support Brkt.				
!	710-0255		Truss Hd. Scr. 1/4-20 x .75"*				
!	17308B		Side Panel R.H.				
	16725		Side Cover R.H. (Tec.)				
	17458A		Side Cover w/Foam R.H.				
	17309B		Side Panel L.H. (Not Shown)				
	17459A		Side Cover w/Foam L.H.(Not Shown)				





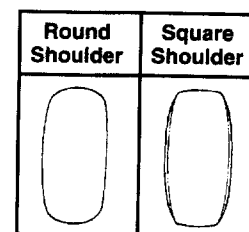
ef. o.	Part No.	Code	Description	Ref. No.	Part No.	Code	Description
1	731-0220 731-1459A 731-1460		Steering Wheel Cap Steering Wheel Cap (Sq.—MTD) Steering Wheel Cap (Square—No Logo)	29 30	723-3018 747-0753 747-0861		Ball Joint 3/8-24 Thd. Tie Rod (Adjustable) Tie Rod (Non-Adjustable)
2	710-0643		Hex Bolt 5/16-18 x 1" Lg.	31	712-0711		Hex Jam Nut 3/8-24 Thd.*
3	736-0242		Belleville Wash. .345" I.D.	32	**		Front Axle Ass'y.—R.H.
4	731-1693		Steering Wheel (3 Spoke)†	33	**		Wheel Ass'y. Comp.
	731-1687		Steering Wheel (3 Spoke)††	34	**		Front Wheel Rim Only
	631-0027		Steering Wheel (4 Spoke)	35	**		Bearing
5	731-0559A 731-0954		Steering Bellow—4.5" (Style A) Steering Bellow—9" (Style 0, 1, 3, 4, 5, 6, 8, 9)	36 37	736-0285 731-0484A		Fl-Wash. .635 I.D. x 1.59" O.D. Front Wheel Hub Cap
	731-1542		Steering Bellow—3.25" (Style 7)		731-1787A	N	Spoked Hub Cap (Yellow—Opt.)
3	712-0240		Hex Jam Nut 7/16-20 Thd.		734-1613A	N	Spoked Hub Cap (Gray—Opt.)
7	741-0587		Flange Bearing .628" I.D. x 1.36 O.D. (Style A)		734-1612A	N	Spoked Hub Cap (Beige—Opt.)
3	723-0448		Ball Joint 7/16-20 Thd.	38	714-0470		Cotter Pin 1/8" Dia. x 1.25"
3	17198A		Retainer Plate	39	736-0531		Fl-Wash. .640" I.D. x 1.24" O.D.
0	738-0141		Shoulder Bolt .437" Dia. x .35 Lg. 5/16-18 Thd.	40	726-0214		Push Cap 5/8" Dia. Rod
1	710-0152		Hex Bolt 3/8-24 x 1.0" Lg. (Gr. 5)	42	712-0262		Hex Jam Nut 3/8-24 Thd.
3	750-0535		Spacer .380" I.D. x .625" O.D. x .227	43	710-1309		Hex Patch Bolt 5/16-18 x .62"
4	736-0217		L-Wash. 3/8" I.D. (H.D.)	46	748-0389		Cap
5	710-0726		Hex Wash. Hd. Self-Tap Scr.	47	712-0214		Hex Cent. L-Nut 3/8-24 Thd.
6	711-1107	N	Steering Drag Link	48	736-0169		L-Wash. 3/8" I.D.*
7	783-0041A		Front Pivot Brkt.	49	712-0158		Hex Cent. L-Nut 5/16-18 Thd.
3	738-0527		Shoulder Bolt .498" Dia. x 2.04 Lg. 3/8-16 Thd.	50	736-0119		L-Wash. 5/16" I.D.*
3	712-0431		Flanged L- Nut 3/8-16 Thd.*	51	717-0622A		Steering Gear Segment
1	712-0411		Hex L-Nut 5/16-24 Thd.	52	741-0656	N	Hex Flg. Brg. .634 I.D.
2	16481A		Steering Arm Front Axle	53	736-0187		Fl-Wash. (Hardened)
3	710-0772		Hex Bolt 5/16-24 x 2.00" Lg. (Gr.5)	54	738-0919	N	Steering Shaft
4	741-0659		Hex Flg. Brg. .632 I.D.	57	710-0837		Oval Hd. Cr.—Sunk Scr.#10 x 5/8" Lg. (Style A)
5	683-0128		Pivot Bar Ass'y.	58	736-0271		Wave-Wash. .32" I.D. x .62" O.D.
5	**		Front Axle Ass'y.—L.H.	59	736-0187		Fl-Wash. (Hardened)
7	712-0241		Hex Nut 3/8-24 Thd.*	60	723-0448		Drag Link Ball Joint 7/16-20 Thd.
3	736-0169		L-Wash. 3/8" I.D.*	63	727-0425A		Spring Clip (Used w/Spoked Hub Cap)
				64	736-0356		Bell-Wash. .39" I.D. x 1.38" O.D.
				65	731-1291A	N	Pivot Bar End Cap (Optional)
				66	710-0459		Hex Bolt 3/8-24 x 1.5" Lg. (Gr. 5)
				69	731-1649		Axle Cap
				70	731-0955		Steering Wheel Insert (Optional)

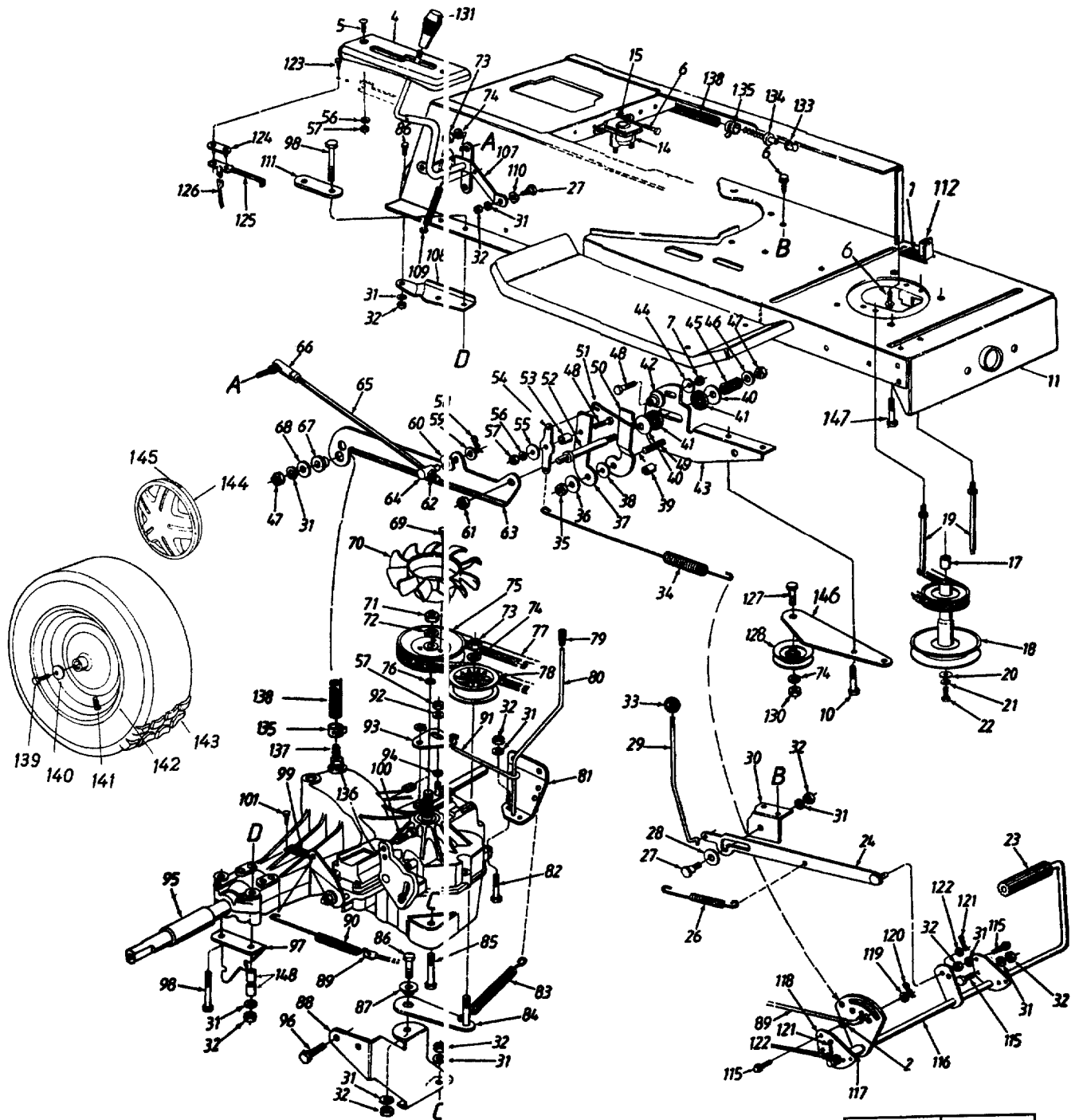
ses Round Steering Wheel Cap

Uses Square Steering Wheel Cap

### \*\*FRONT WHEEL CHART

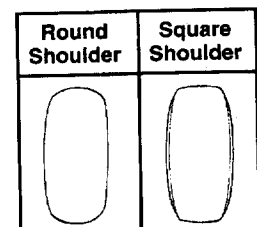
Description	15" x 6" (Round Shoulder)	15" x 6" (Square Shoulder)
Wheel Ass'y. Comp.	634-0056	634-0105
Tire Only	734-0864	734-1731
Rim Only	634-0024	634-0024
Bearing	741-0487A	741-0487A
Air Valve	734-0255	734-0255
Grease Fitting (Optional)	737-0211A	737-0211A
Grease Plug	737-0212	737-0212
Front Axle Ass'y.—L.H.	683-0127	683-0127
Front Axle Ass'y.—R.H.	683-0126	683-0126
Front Axle Ass'y.—L.H. (46" Deck)	683-0124	683-0124
Front Axle Ass'y.—R.H. (46" Deck)	683-0125	683-0125





\*\* REAR WHEEL CHART

Description	20" x 8" (Round Shoulder)	20" x 8" (Square Shoulder)
Wheel Ass'y. Comp.	734-1675	634-0104
Tire Only	734-1596	734-1730
Rim Only	634-0070	634-0070



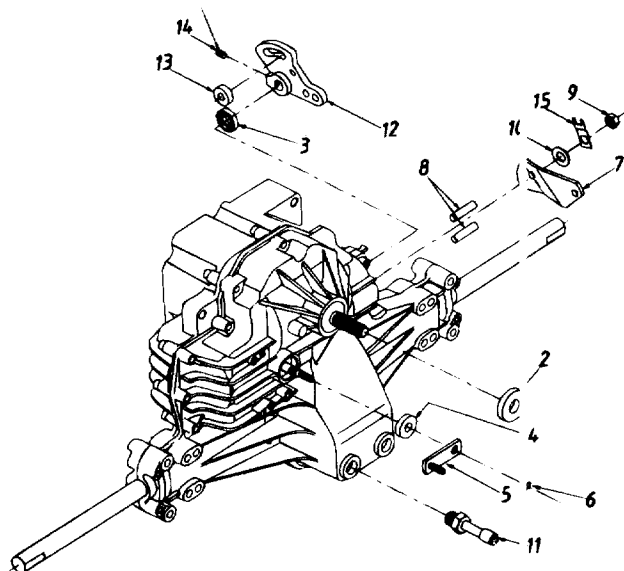
**90 Thru 699**

REF. NO.	PART NO.	CODE	DESCRIPTION	REF. NO.	PART NO.	CODE	DESCRIPTION
1	732-0750A	N	Spring Switch	51	747-0887		Neutral Return Rod
2	712-0265		Hex Sems Nut 5/16-18 Thd.	52	738-0879		Friction Disc Stud
4	731-1734	N	Index Bracket	53	748-0368		Shld. Spacer
5	710-0924		Pan Hd. Mach. Scr. 1/4-20 x .75"	54	783-0096		Neutral Return Lever
3	710-0599		Hex Wash. Hd. TT-Tap Scr.	55	736-3092		FI-Wash. .265" I.D. x 1" O.D.
7	712-0138		Hex Nut 1/4-28 Thd.	56	736-0329		L-Wash. 1/4" I.D.*
3	736-0329		L-Wash. 1/4" I.D.*	57	712-0287		Hex Nut 1/4-20 Thd.*
10	710-0195		Hex. Bolt 1/4-28 x .62" Lg.	58	714-0104		Hairpin Clip
11	783-0310C	N	Lower Frame Ass'y.	59	736-0262		FI-Wash. .375" I.D. x .87" O.D.
14	725-1426		Solenoid	60	736-0413		Spring Wash. .39" I.D.
15	736-0222		Ext. L-Wash. 1/4" I.D.	61	712-0116		Hex L-Nut 3/8-24 Thd.
17	750-0956		Spacer	62	712-0711		Hex Jam Nut 3/8-24 Thd.
8	756-0983		Engine Pulley	63	783-0090A		Neutral Return Brkt.
9	711-1044		Belt Guard Stud 4.75" Lg.	64	711-0832		Ferrule 3/8-24 Thd.
10	736-0322		FI-Wash. 7/16" I.D. x 1.25" O.D.	65	747-0365		Control Rod
11	736-0171		L-Wash. 7/16" I.D.*	66	723-0351		Ball Joint 3/8-24 Thd.
12	710-0757		Hex Bolt 7/16-20 x 1.5" Lg.	67	748-0234		Shld. Spacer .5" Dia. x .27" Lg.
13	735-0196		Foot Pad	68	736-0159		FI-Wash. .349" I.D. x .879" O.D.
14	683-0049		Brake Lockout Brkt. Ass'y.	69	710-3007		Hex Tap Scr. #12 x 3/8" Lg.
6	732-0728		Foot Pedal Return Spring	70	731-1449		Fan
7	738-0296		Shld. Bolt .437" Dia. x .268"	71	712-0333		Hex Nut 1/2-20 Thd.
8	736-0406		FI-Wash. 7/16" I.D. x 1-3/8" O.D.	72	736-0921		L-Wash. 1/2" I.D.*
9	747-0608A	N	Lock-up Rod	73	712-0241		Hex Nut 3/8-24 Thd.
0	17755A		Bracket	74	736-0169		L-Wash. 3/8" I.D.
1	736-0119		L-Wash. 5/16" I.D.*	75	756-0975		Transmission Pulley
2	712-0267		Hex Nut 5/16-18 Thd.*	76	732-0729		Wire Ring
3	720-0166		Ball Knob	77	754-0349		V-Belt
4	732-0727		Neutral Return Spring	78	756-0981		FI-Idler Pulley 2.75" O.D.
5	712-0273		Hex Nut 5/16-24 Thd.	79	720-0238		Rod End Grip
3	736-3078		FI-Wash. .344" I.D. x 1" O.D.	80	747-0894		Bypass Control Lever
7	783-0092		Scissor-Flat	81	783-0085		Transaxle Support Brkt.—L.H.
3	736-0362		FI-Wash. .33" I.D. x 1.25" O.D.	82	710-0528		Hex Bolt 5/16-18 x 1.25" Lg.
3	750-0808		Spacer	83	732-0384		Ext. Spring 6.12
0	736-0219		Bell-Wash. .4" I.D. x 1.13" O.D.	84	683-0051		Idler Brkt. Ass'y.
1	761-0196		Friction Washer	85	710-0116		Hex Bolt 5/16-18 x 2.5" Lg.*
2	750-0918		Centering Gauge Spacer	86	710-0118		Hex Bolt 5/16-18 x .75" Lg.*
3	783-0095		Neutral Return Mtg. Brkt.	87	748-0234		Shld. Spacer .5" Dia. x .27" Lg.
1	736-0270		Bell-Wash. .265" I.D. x .75" O.D.	88	783-0086A		Transaxle Support Brkt.—R.H.
5	732-0718		Comp. Spring 1.19" Lg.	89	747-0886		Brake Rod 24.94" Lg.
5	736-3092		FI-Wash. .26" I.D. x .72" O.D.	90	732-0716		Ext. Spring
7	712-0123		Hex Nut 5/16-24 Thd.	91	747-0893		Bypass Actuator Rod
1	710-0299		Hex Bolt 1/4-28 x 1" Lg. (Gr. 5)	92	736-0142		FI-Wash. .281" I.D. x .5" O.D.
1	710-1012		Rib Neck Bolt 5/16-24 x .84" Lg.	93	783-0098		Bypass Adjustment Brkt.
1	783-0093		Scissor-Offset	94	736-0222		External L-Wash. 1/4" I.D.

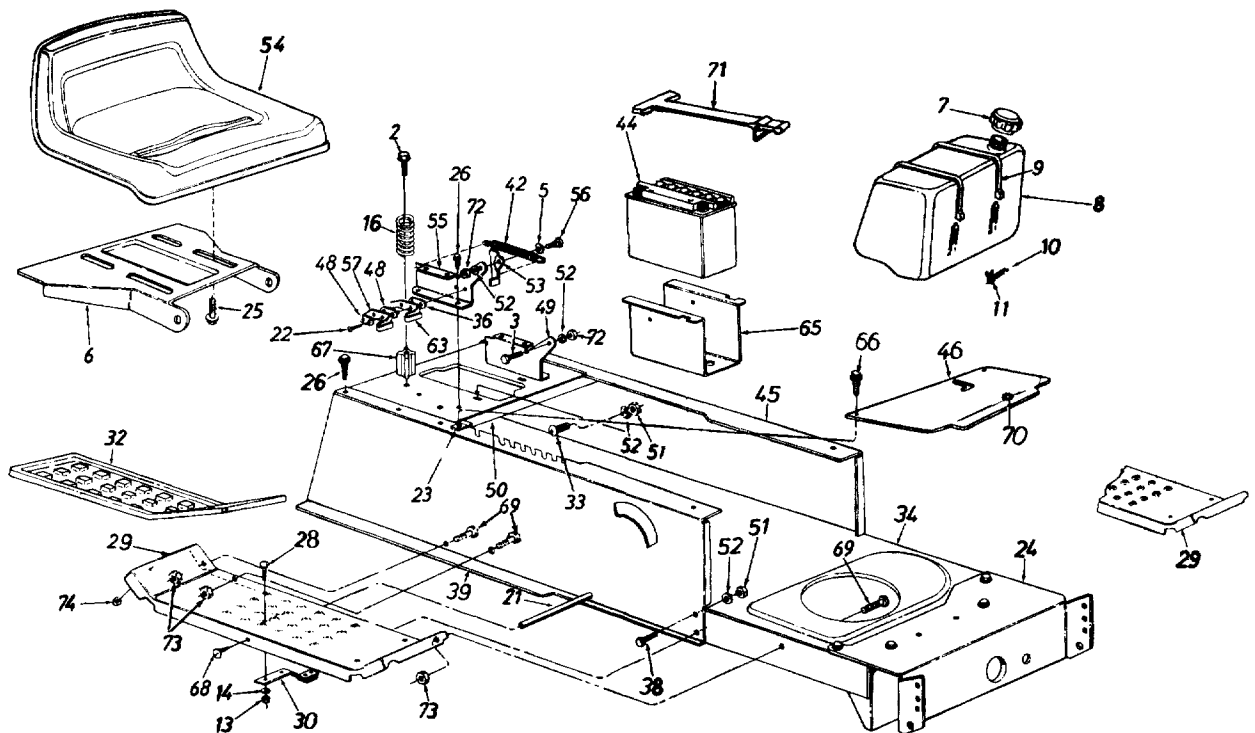
## 690 Thru 699

REF. NO.	PART NO.	CODE	DESCRIPTION	REF. NO.	PART NO.	CODE	DESCRIPTION
95	731-1086A		Sleeve .758" I.D. x 1" O.D.	126	725-1399		Extension Wire
96	710-0604		Hex. TT-Tap Scr. 5/16-13 x .62"	127	710-0520		Hex Bolt 3/8-16 x 1.5" Lg.
97	17994		Retainer Brkt.-Transaxle	128	756-0116		Idler Pulley
98	710-0176		Hex Bolt 5/16-18 x 2.75" Lg.	129	736-0280		FI-Wash. .39" I.D.
	710-3195		Hex Bolt 5/16-18 x 4.5" Lg. (Used w/46" Deck)	130	712-0798		Hex Nut 3/8-16 Thd.*
99	732-0250		Tension Spring	131	720-0218		Shift Knob
100	710-0888		Hex Bolt 5/16-24 x 1" Lg	133	731-1481		Vent Cap
101	710-0224		Hex Wash. Hd. AB-Tap Scr.	134	731-1480		Plastic Vent
107	647-0008A		Speed Control Lever Assy.	135	726-0324		Clamp
108	17668		Axle Support Brkt.-R.H.	136	721-0330		O-Ring
	17669		Axle Support Brkt.-L.H.	137	731-1485		Hose Fitting
109	732-0433		Ext. Spring 2.75" Lg.	138	751-0588-18		Fuel Line 18" Lg.
110	736-0141		Spr-Wash. .445" I.D. x .75" O.D.	139	710-0627		Hex Bolt 5/16-24 x .75" Lg.
111	17840		Transaxle Mtg. Brkt.	140	736-0242		Bell-Wash. .345" I.D. x .88" O.D.
112	725-1657A		Safety Switch (Clutch)	141	734-0255		Air Valve
115	710-0650		Hex TT-Tap Scr. 5/16-13 x .75"	142	**		Rim Only
116	683-0123	N	Clutch/Brake Pedal Assy.	143	**		Wheel Assy. Comp.
117	750-0802		Spacer .63" I.D.		**		Tire Only
118	17860		Pedal Bracket	144	734-1615A		Hub Cap (Gray-Optional)
119	736-3008		FI-Wash. .344" I.D. x .71" O.D.		734-1614A		Hub Cap (Beige-Optional)
120	714-0111		Cotter Pin 3/32" Dia.		734-1788A		Hub Cap (Yellow-Optional)
121	714-0470		Cotter Pin 1/8" Dia.	145	727-0425A		Spring Clip
122	736-0140		FI-Wash. .385" I.D. x .61" O.D.	146	783-0099		Idler Bracket
123	710-0227		Hex AB-Tap Scr. #8 x .5" Lg.	147	710-1315		Hex TT-Tap Scr. 3/8-16 x 1.25"
124	726-0320		Insulator Nut Plate	148	750-0258		Spacer .32" I.D. x .75" O.D. (Used w/46" Deck)
125	725-1643		Reverse Safety Switch				

## 690 Thru 699



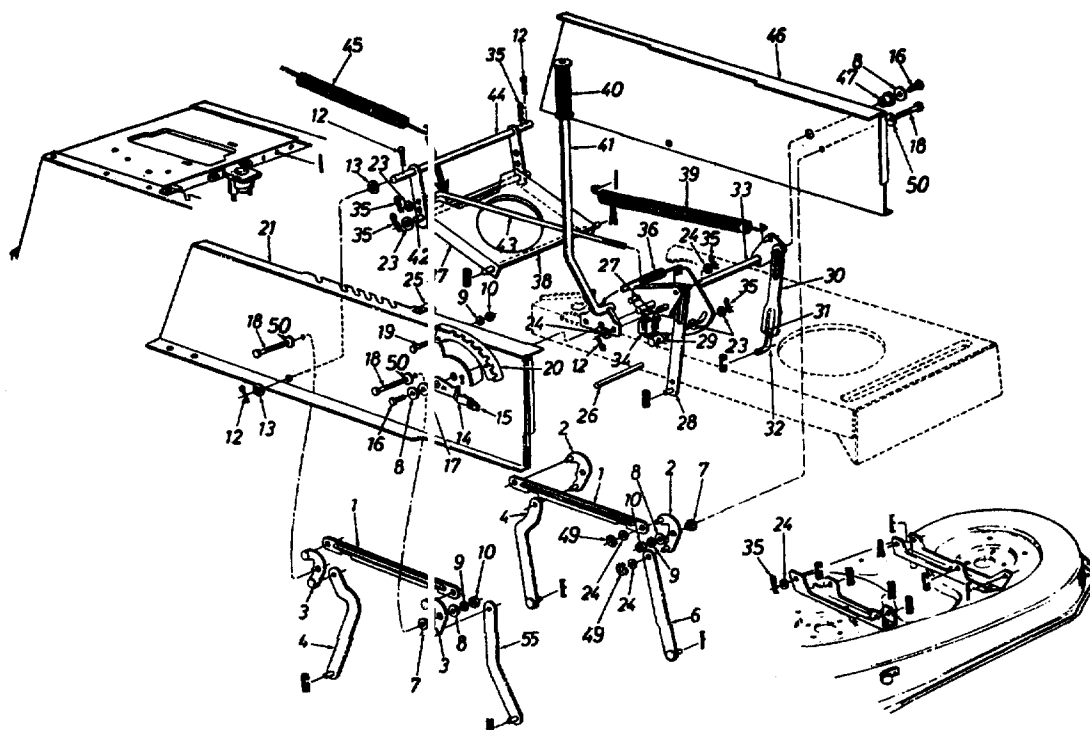
REF. NO.	PART NO.	QTY.	DESCRIPTION
1	718-0255A		Transmission Comp.
2	HG-9008000-0128	1	Seal-Lip
3	HG-9008000-0126	1	Seal-Lip
4	HG-45074	1	Seal-Lip 10X25X7
5	HG-50126	1	Arm-Bypass
6	HG-44870	1	Ring-Retaining
7	HG-44094	1	Arm-Actuating
8	HG-44891	2	Pin-Actuating
9	HG-50108	1	Nut-Hex Lock 5/16-24 UNJC
10	HG-44130	1	Washer 7/16" x 7/8" x .06"
11	HG-50042	1	Breather Assy.
12	HG-45007	1	Arm-Control
13	HG-50034	1	Puck-Dampener
14	HG-50018	1	Set Screw
15	HG-50129	1	Strap, Locking



# 0 THRU 699

Part No.	Code	Description	Ref. No.	Part No.	Code	Description
710-1208	N	Hex Tap Scr. 5/16-18 x 3.25"	45	783-0043	N	Upper Frame—L.H.
783-0039A		Seat Pivot Bracket	46	783-0133B		Shift Cover
751-0603		Fuel Cap	48	726-0279		Insulator Plate
751-0553	N	Fuel Tank (12.5 H.P. & Smaller)	49	17951	N	Seat Pivot Brkt. Support—L.H.
751-0555		Fuel Tank (13 H.P. & Larger)	50	783-0355A		Hitch Plate
726-0209		Tie Strap	51	712-0267		Hex Nut 5/16-18 Thd.*
751-0535-15	N	Fuel Line	52	736-0119	N	L-Wash. 5/16" I.D.*
726-0205		Hose Clamp	53	17239A		Seat Lift Brkt.
712-0287		Hex Nut 1/4-20 Thd.*	54	757-0363	N	Seat 8-7/8" High
736-0329	N	L-Wash. 1/4" I.D.		757-0364		Seat 8-7/8" High (Yellow)
732-0735		Compression Spring		757-0360		Seat 10-5/8" High
738-0526		Running Board Rod		757-0365	N	Seat 10-5/8" High (Yellow)
710-0227	N	Hex AB-Tap Scr. #8 x .50" Lg.		757-0350		Seat 14-1/4" High
726-0139		Speed Nut #10Z		757-0372		Seat 14-1/4" High (Yellow)
783-0041A		Front Pivot Brkt.	55	17950	N	Seat Pivot Brkt. Support—R.H.
710-0870	N	Hex Tap Scr. 3/8-16 x .62" Lg.	56	738-0296		Shld. Bolt .437" Dia. x .268"
710-0726		Hex Wash. Hd. AB-Tap Scr. 5/16 x .75" Lg.	57	725-1303		Spring Switch (Seat—Outer)
710-0134	N	Carriage Bolt 1/4-20 x .62"	59	710-0650	N	Hex TT-Tap Scr. 5/16-18 x 7/8"
17770B		Running Board (R.H. & L.H.)	63	725-1439		Safety Switch (Seat—Inner)
761-0168A		Blade Brake Ass'y.	65	783-0345	N	Battery Tray
731-0909	N	Rubber Foot Pad—L.H.**	66	710-0351		Truss Mach. B-Tap Scr. #10 x .5" Lg.
731-0910		Rubber Foot Pad—R.H.**	67	748-0347		Spring Spacer
723-0422		Abrasive Foot Pad**	68	710-0323	N	Truss Mach. Scr. 5/16-18 x .75"
783-0310C	N	Lower Frame	69	710-0118		Hex Bolt 5/16-18 x .75" Lg.*
726-0278		Insulator Boss Plate	70	731-0405		Snap Bushing
736-0264		Fl-Wash. .344" I.D. x .625" O.D.	71	723-3064	N	Battery Retainer Strap
710-0118	N	Hex Bolt 5/16-18 x .75" Lg.*	72	712-3010		Hex Nut 5/16-18 Thd.
783-0042A		Upper Frame—R.H.	73	712-0265		Hex Sems Nut 5/16-18 Thd.
732-0581B	N	Extension Spring 5.31" Lg.	74	712-0271		Hex Sems Nut 1/4-20 Thd.
725-1707B		12-V Battery				

ditional

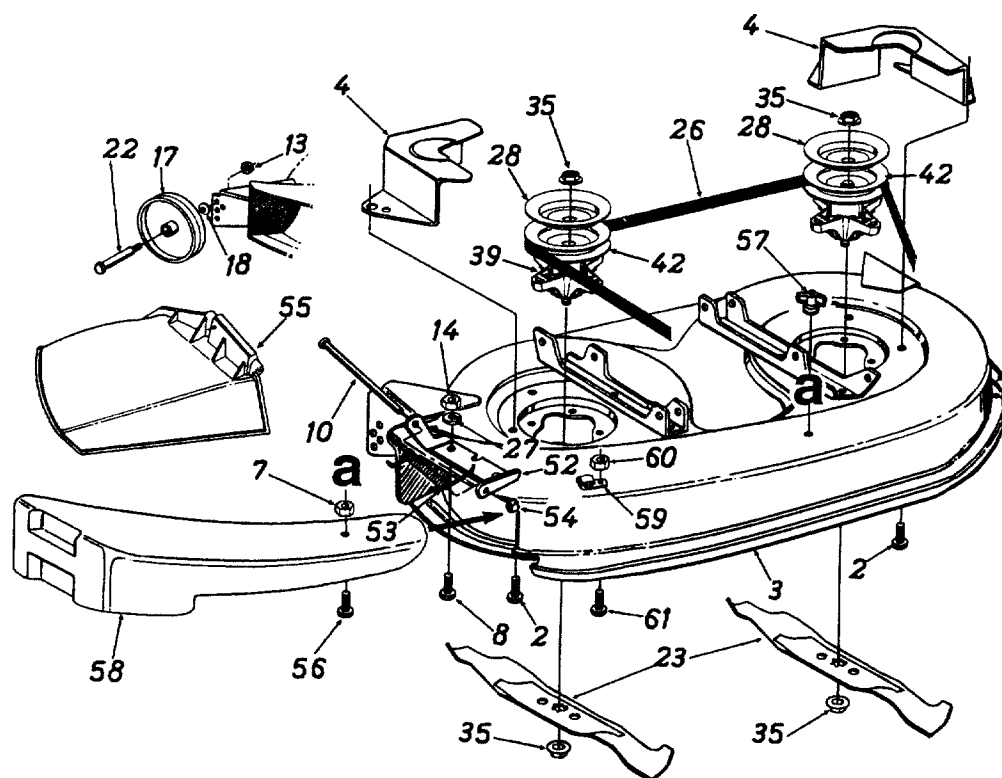


## 690 THRU 699

Ref. No.	Part No.	Code	Description	Ref. No.	Part No.	Code	Description
1	783-0103		Connecting Rod	26	738-0526		Running Board Rod
2	683-0029A		Pivot Link Ass'y.—L.H.	27	710-3007		Hex Wash. Hd. Tap Scr.
3	683-0028A		Pivot Link Ass'y.—R.H.	28	14802A		Link Deck Lift Ass'y.
4	17710		Deck Hanger Link Ass' /	29	711-0723A		Adj. Ferrule 3/8-24 Thd.
5	14800A		Deck Hanger Link Ass' /	30	17712		Adj. Deck Lift Link
6	14804A		Deck Hanger Link Ass' /	31	712-3066		Hex Nut 1/2-20 Thd. (Gr. 5)
7	748-0331		Shld. Spacer .318" I.D.	32	711-0841		Lift Link Adjuster
8	736-0264		FI-Wash. .344" I.D. x .62" O.D.	33	17637A		Lift Shaft Ass'y.
9	736-0119		L-Wash. 5/16" I.D.*	34	725-1657A		Safety Switch (Deck)
10	712-3010		Hex Nut 5/16-18 Thd. (Gr. 5)	35	714-0145		Inter. Cotter Pin 3/8" Dia.
12	714-0470		Cotter Pin 1/8" Dia.	36	732-0637		Extension Spring
13	736-0256		FI-Wash. .635" I.D. x 1.0" O.D.	37	17636C	N	Stabilizer Bracket
14	683-0003		Height Adj. Stop Lever Ass'y. (Incl. Ref. 15)†	38	738-0670		Shaft 1/2" Dia. x 10.28" Lg.
15	08540		Knob†	39	732-0638		Extension Spring
16	710-0604		Hex Wash. TT-Tap Scr. 5/16-18 x .75" Lg.	40	720-0233		Grip (Lift Handle)
17	748-0176		Flange Brg. .63" I.D.†	41	97675A		Deck Lift Handle Ass'y.
18	710-1238		Hex Wash. Hd. Scr. 5/16-18 x .875" Lg.	42	738-0669		Shaft 3/8" Dia. x 9.34" Lg.
19	710-0118		Hex Bolt 5/16-18 x .75" Lg.	43	747-0598		Disengagement Rod
20	17730		Index Brkt.	44	97624		Stabilizer Shaft Ass'y.
21	783-0042A		Upper Frame—R.H.	45	732-0556		Extension Spring 7.58" Lg.
23	736-0267		FI-Wash. .385" I.D. x .87" O.D.	46	783-0043		Upper Frame—L.H.
24	736-0160		FI-Wash. .531" I.D. x .83" O.D.	47	741-0313		Flange Brg. .632" I.D.
25	726-0272		Clamp	48	17128A		Spring Retainer Brkt.
				49	716-0104		"E"-Ring
				50	736-0425		Bell-Wash. .325" I.D.

† Optional Parts

## DECK "F"



## 0 THRU 699

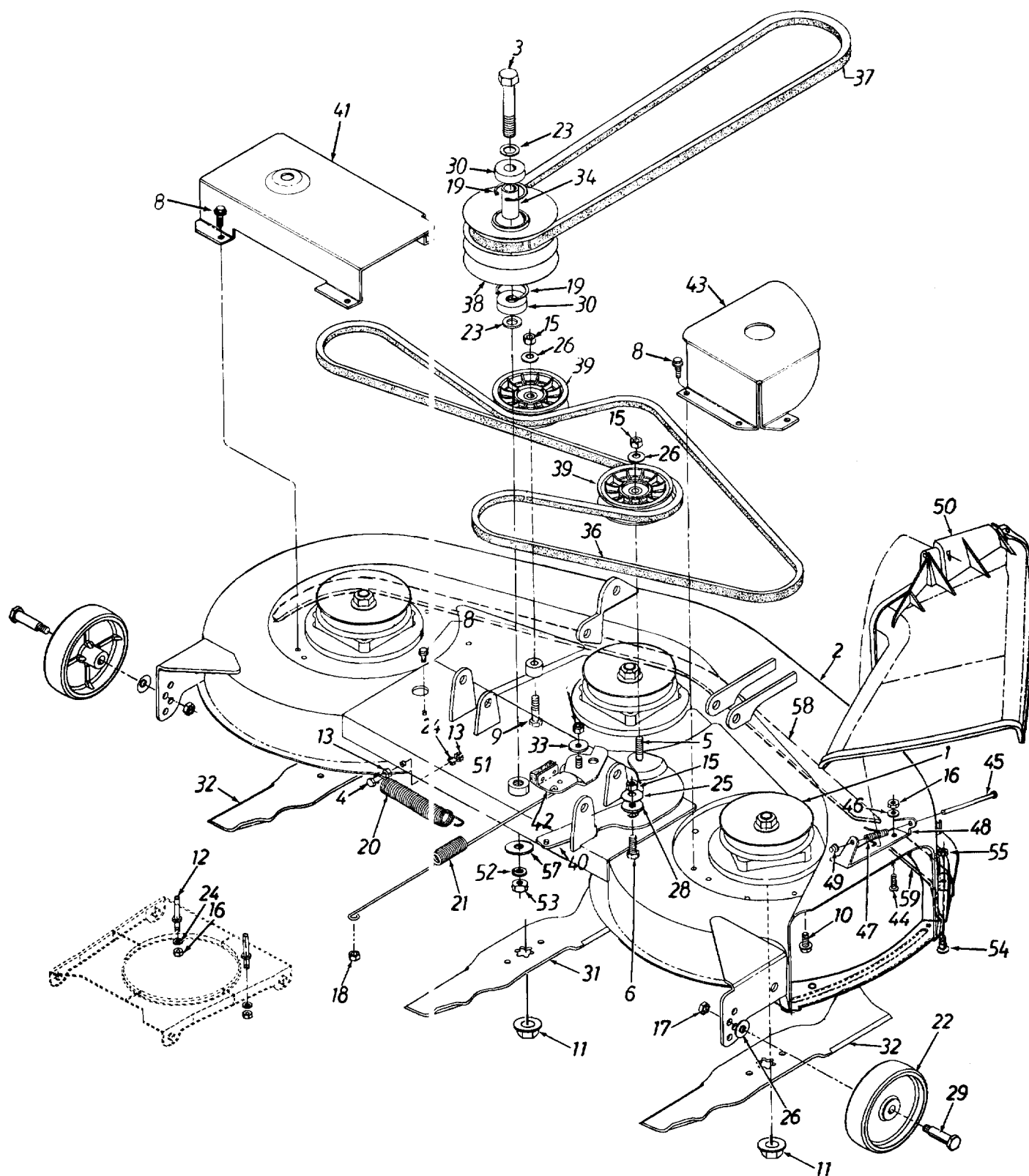
f.	Part No.	Code	Description	Ref. No.	Part No.	Code	Description
1	710-1260		Hex Wash. Hd. TT-Tap Scr. 5/16-18 x .75" Lg.	33	710-0157		Hex Bolt 5/16-24 x .75" Lg.
1	683-0129		38" Deck Ass'y. **	35	712-0417A		Hex Flange Nut 5/8-18 Thd.†
1	753-0694	N	38" Deck Ass'y. Comp.(For Service Only) **	37	736-0158		L-Wash. 5/8" I.D.*
1	783-0343		Belt Guard Deck	39	618-0138		Blade Spindle Ass'y. Comp.(Incl. Ref. 28, 35, 42)
1	712-0291		Hex L-Nut 1/4-20 Thd.††	42	756-0969		5" Dia. Pulley†
1	710-0258		Hex Bolt 1/4-20 x .62"	52	703-1693		Hinge Mtg. Brkt.
1	711-0792		Hinge Pin	53	732-0602		Torsion Spring
1	712-0181		Hex Top L-Nut 3/8-16 Thd.	54	726-0106		Push Nut
1	712-3006		Hex Nut 1/4-20 Thd. (Gr. 5)	55	731-1032		Chute Ass'y. Comp. (Incl. Ref.10, 52, 53, 54, 55)
1	734-0973		Deck Wheel—5"	56	710-0597		Hex Bolt 1/4-20 x 1" Lg.††
1	736-0105		Bell-Wash. .40" I.D. x .88" O.D.	57	712-3087		Wing Nut 1/4-20 Thd. ††
1	738-0373		Shld. Bolt .498" Dia. x 1.53"	58	731-1643		Mulching Plug††
1	742-0610		3 in 1 Blade	59	16606		Retainer Hook Brkt.
1	754-0329A		V-Belt	60	712-0271		Hex Sems Nut 1/4-20 Thd.
1	736-0270		Bell-Wash. 1/4" I.D.	61	710-0258		Hex Bolt 1/4-20 x .62" Lg.
1	783-0342		Brake Disc				

† Deck pulleys and blade nuts must be torqued to 100 ft. lbs. if removed or replaced.

†† Optional

\*\* Must be ordered with 4 digit color code.

# DECK "H"



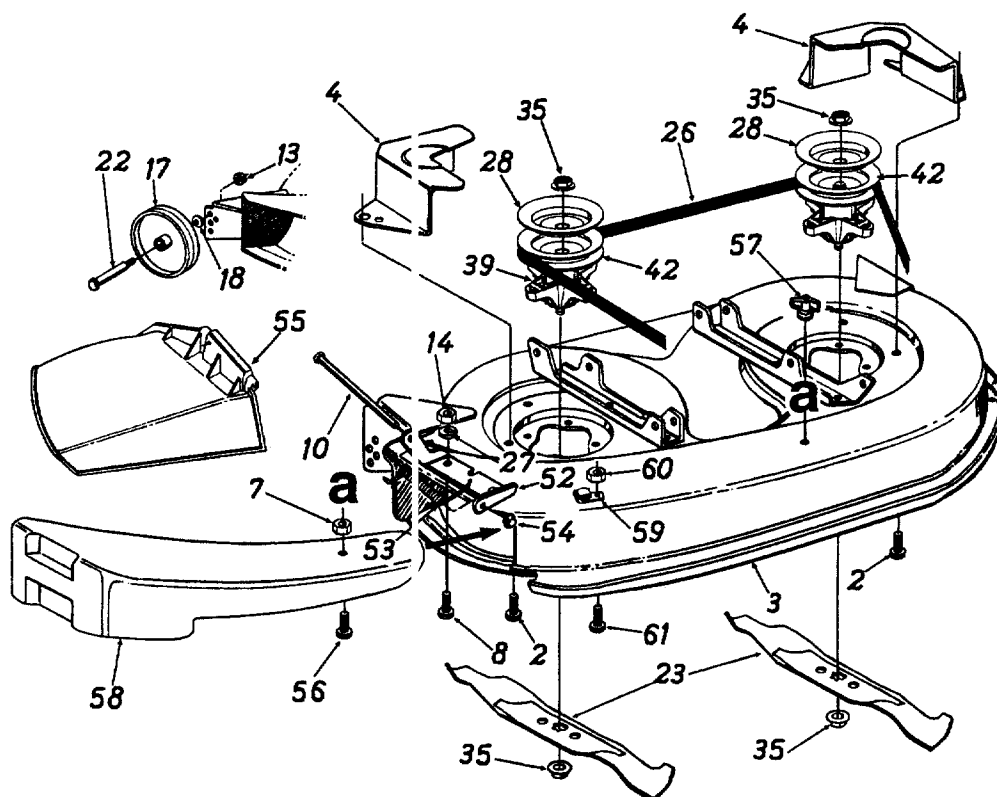


# **ECK "H"**

Part No.	Code	Description	Ref. No.	Part No.	Code	Description
618-0240	N	Blade Spindle Ass'y.	30	741-0524		Ball Brg. .625" I.D. x 1.574" O.D. x .47"
983-0120	N	46" Deck Ass'y. **	31	742-0645	N	Blade 14.88" Lg.
913-06921		46" Deck Ass'y. Comp. (For Service) **	32	742-0644	N	Blade 16.28" Lg.
710-3151		Hex Bolt 5/8-18 x 4.25" Lg.	33	748-0234		Shoulder Spacer
710-0428		Hex Bolt 1/4-28 x 1.25" Lg.	34	750-0932A		Spacer .635" I.D. x .088" O.D.
710-0459		Hex Bolt 3/8-24 x 1.5" Lg.	36	754-0440		V-Belt
710-1039		Hex Bolt 3/8-24 x 1" Lg.	37	754-0439		V-Belt
710-0599		Hex Wash. Hd. TT-Tap Scr.1/4-20 x .5" Lg.	38	756-0638		Pulley Double Deck 5" O.D.
710-0151		Hex Bolt 3/8-24 x 2" Lg.	39	756-0627		Flat Idler Pulley 3.5 O.D.
710-1260		Hex Flange Bolt 5/16-24 x .75" Lg.	40	783-0046		Idler Deck Bracket
712-0417A		Hex Flange L-Nut 5/8-18 Thd.	41	783-0063A		Belt Cover L.H.
711-0993		Belt Guard Pin	42	17116		Deck Brake Brkt. Ass'y.
712-0138		Hex Nut 1/4-28 Thd.	43	17258A		Belt Cover Brkt. R.H.
712-0429		Hex Ins. L-Nut 5/16-18 Thd.	44	710-0258		Hex Bolt 1/4-20 x .62" Lg.
712-0241		Hex Nut 3/8-24 Thd.	45	711-0792		Hinge Pin
712-3006		Hex Nut 1/4-20 Thd. (Gr. 5)	46	736-0270		Bell-Wash. 1/4" I.D.
712-0181		Hex Top Jam Nut 3/8-16 Thd.	47	732-0602		Torsion Spring
712-0158		Hex Center L-Nut 5/16-18 Thd.	48	703-1693		Hinge Mtg. Brkt.
716-3020		Int. Snap Ring	49	726-0106		Push Nut
732-0594A		Ext. Spring .88" O.D. x 6.17"	50	731-1032		Chute Ass'y. Comp. (Incl. Ref. 45, 47, 48, 49, 50)
732-0723		Ext. Spring .788" O.D. x 15.5"	51	750-0960		Spacer .635" I.D. x 1" O.D.
734-0973		Deck Wheel	52	736-0158		L-Wash. 5/8" I.D.
736-0290		FI-Wash. .635" I.D. x 1" O.D. x .06"	53	712-0337		Hex Nut 5/8-18 Thd.
736-0329		L-Wash. 1/4" I.D.*	54	710-0167		Carriage Bolt 1/4-20 x .5" Lg.
736-0331		Bell-Wash. 3/8" x 1.125" x .062"	55	712-0271		Hex Sems Nut 1/4-20 Thd.
736-0105		Bell-Wash. 3/8" x .87" x .064"	57	736-3088		FI-Wash. .635" I.D.
738-0347		Shoulder Spacer .625" I.D. x .169"	58	783-0141		Center Deck Skirt
738-0373		Shld. Bolt .498" x 1.525"	59	783-0142		R.H. Deck Skirt

\*\* Must be ordered with 4 digit color code.

## DECK "G"



## 690 THRU 699

Ref. No.	Part No.	Code	Description	Ref. No.	Part No.	Code	Description
2	710-1260		Hex Wash. Hd. TT-Tap Scr. 5/16-18 x .75" Lg.	33	710-0157		Hex Bolt 5/16-24 x .75" Lg.
3	683-0141	N	42" Deck Ass'y. **	35	712-0417A		Hex Flange Nut 5/8-18 Thd.†
	753-0698	N	42" Deck Ass'y. Comp.(For Service Only) **	37	736-0158		L-Wash. 5/8" I.D.*
4	783-0149	N	Belt Guard Deck	39	618-0142	N	Blade Spindle Ass'y. Comp.(Incl. Ref. 28, 35, 42)
7	712-0291		Hex L-Nut 1/4-20 Thd.††	42	756-0980	N	5.75" Dia. Pulley†
8	710-0258		Hex Bolt 1/4-20 x .62"	52	703-1693		Hinge Mtg. Brkt.
10	711-0792		Hinge Pin	53	732-0602		Torsion Spring
13	712-0181		Hex Top L-Nut 3/8-16 Thd.	54	726-0106		Push Nut
14	712-3006		Hex Nut 1/4-20 Thd. (Gr. 5)	55	731-1032		Chute Ass'y. Comp. (Incl. Ref.10, 52, 53, 54, 55)
17	734-0973		Deck Wheel—5"	56	710-0597		Hex Bolt 1/4-20 x 1" Lg.††
18	736-0105		Bell-Wash. .40" I.D. x .88" (O.D.)	57	712-3087		Wing Nut 1/4-20 Thd.††
22	738-0373		Shld. Bolt .498" Dia. x 1.53"	58	731-1643	N	Mulching Plug††
23	742-0616	N	3 in 1 Blade	59	16606		Retainer Hook Brkt.
26	754-0371A		V-Belt	60	712-0271		Hex Sems Nut 1/4-20 Thd.
27	736-0270		Bell-Wash. 1/4" I.D.	61	710-0258		Hex Bolt 1/4-20 x .62" Lg.
28	783-0342		Brake Disc				

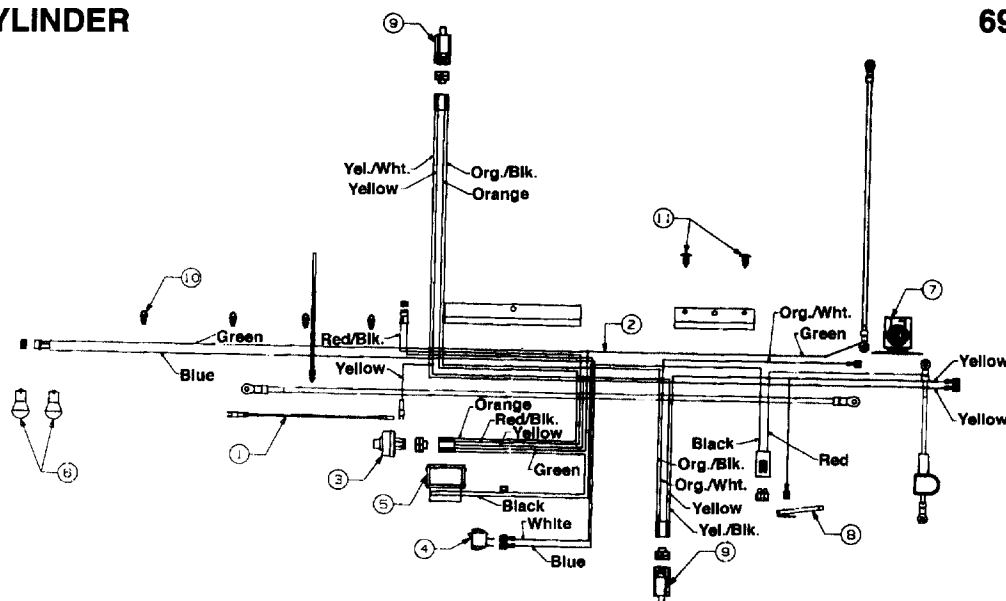
† Deck pulleys and blade nuts must be torqued to 100 ft. lbs. if removed or replaced.

†† Optional

\*\* Must be ordered with 4 digit color code.

# SINGLE CYLINDER

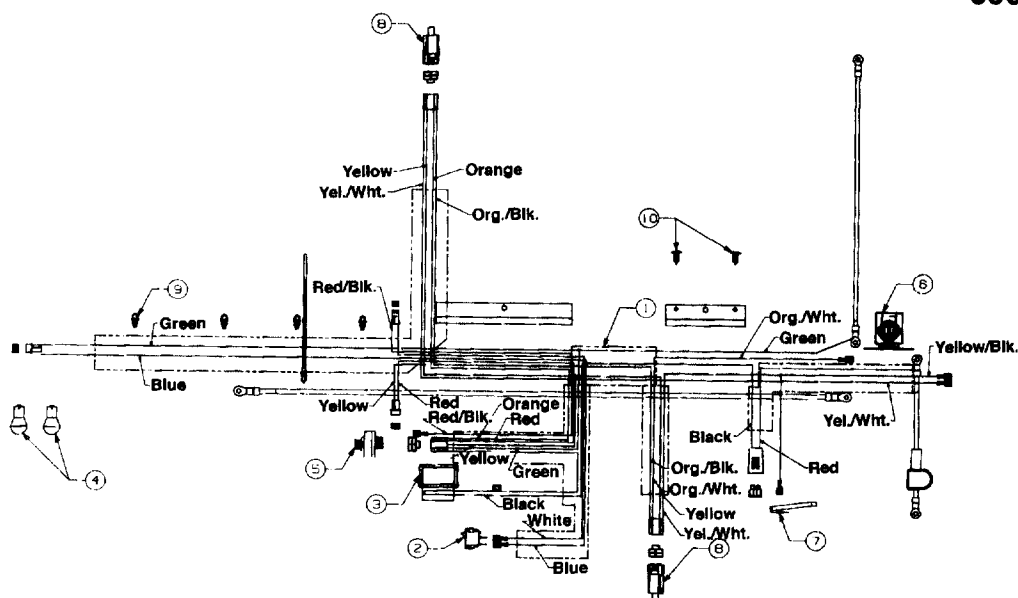
690 THRU 699



ef. o.	Part No.	Code	Description	Ref. No.	Part No.	Code	Description
1	629-0207		Harness Adapter (Mag.)	6	725-0963		Bulb (Headlight)
2	629-0302A	N	Wire Harness w/Light Switch and Amp	7	725-1426		Solenoid
	629-0301A	N	Wire Harness w/o Light Switch and Amp	8	725-1643		Safety Switch (Reverse)
3	725-0267		Ignition Switch	9	725-1657A		Safety Switch
4	725-0634		Light Switch (Optional)	10	725-1711		Wire Retainer Clip
5	725-0925		Ammeter (Optional)	11	726-3046		Ratchet

# OVER HEAD VALVE

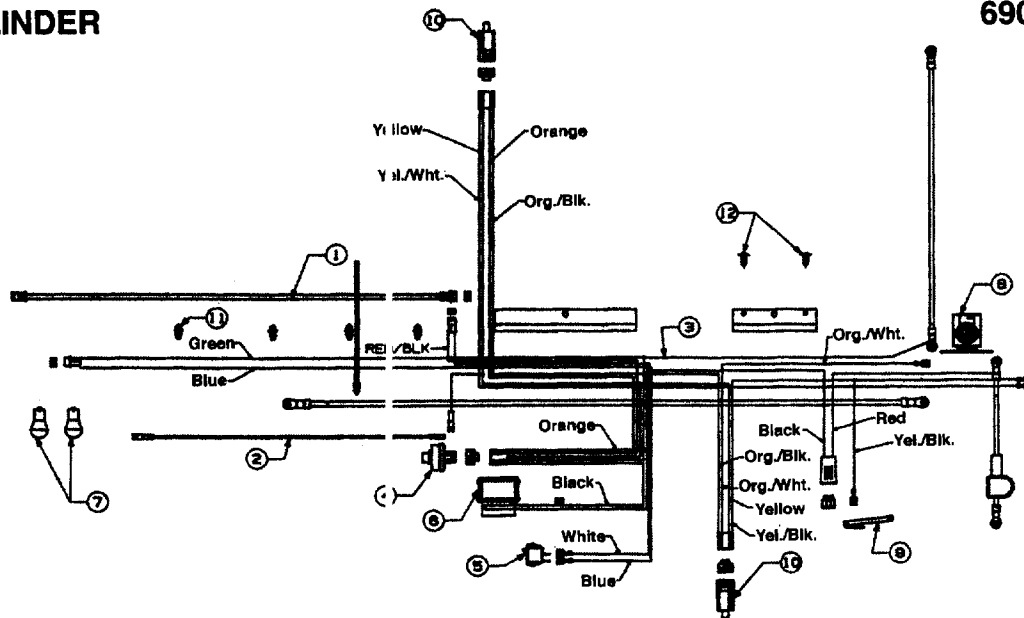
690 THRU 699



Part No.	Code	Description	Ref. No.	Part No.	Code	Description
629-0305A		Wire Harness w/Light Switch and Amp	6	725-1426		Solenoid
629-0304A		Wire Harness w/o Light Switch and Amp	7	725-1643		Safety Switch (Reverse)
725-0634		Light Switch (Optional)	8	725-1657A		Safety Switch
725-0925		Ammeter (Optional)	9	725-1711		Wire Retainer Clip
725-0963		Bulb (Headlight)	10	726-3046		Ratchet
725-1396		Ignition Switch				

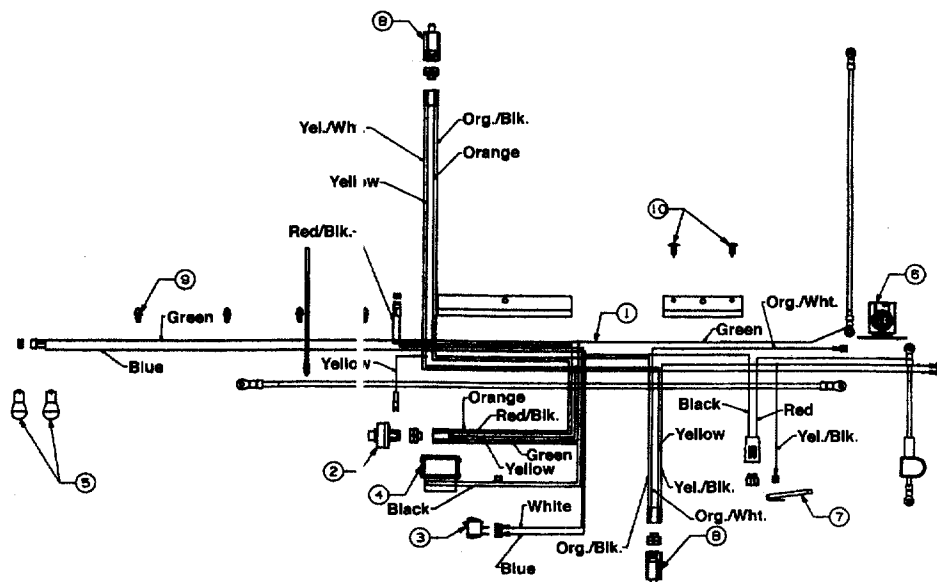
# TWIN CYLINDER

690 THRU 699



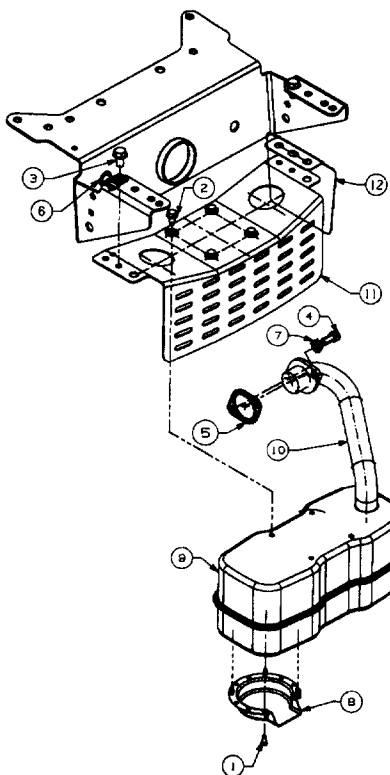
Ref. No.	Part No.	Code	Description	Ref. No.	Part No.	Code	Description
1	629-0125		Harness Adapter (Alt.)	7	725-0963		Bulb
2	629-0208		Harness Adapter	8	725-1426		Solenoid
3	629-0302A	N	Wire Harness w/Light Switch & Amp	9	725-1643		Safety Switch (Reverse)
4	629-0301A	N	Wire Harness w/o Light Switch & Amp	10	725-1657A		Safety Switch
5	725-0267		Ignition Switch	11	725-1711		Wire Retainer Clip
6	725-0634		Light Switch	12	726-3046		Ratchet
7	725-0925		Ammeter				

# TECUMSEH



Ref. No.	Part No.	Code	Description	Ref. No.	Part No.	Code	Description
1	629-0302A	N	Wire Harness w/Light Switch & Amp	6	725-1426		Solenoid
2	629-0301	N	Wire Harness w/o Light Switch & Amp	7	725-1643		Safety Switch (Reverse)
3	725-0267		Ignition Switch	8	725-1657A		Safety Switch
4	725-0634		Light Switch (Optional)	9	725-1711		Wire Retainer Clip
5	725-0925		Ammeter (Optional)	10	726-3046		Ratchet
6	725-0963		Bulb (Headlight)				

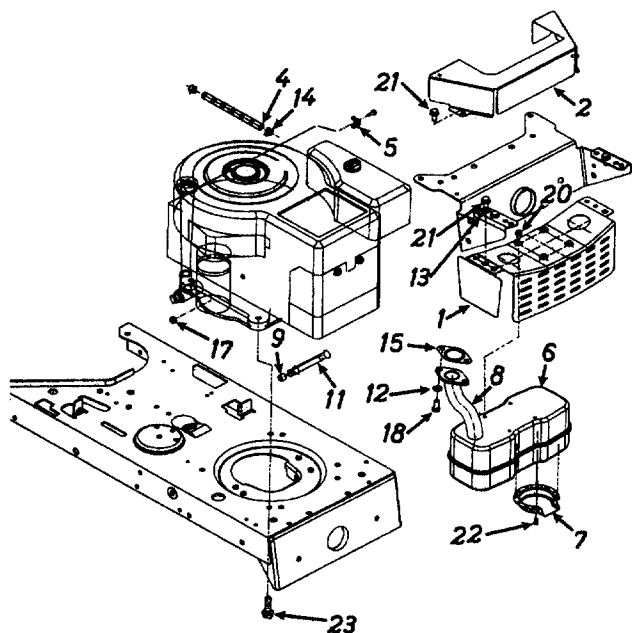
## SINGLE CYLINDER - LOW NOISE



690 THRU 699

Ref. No.	Part No.	Code	Description
1	710-0148		Hex Slot Scr. #8-32 x .38" Lg.
2	710-0599		Hex Wash. TT-Tap Scr. 1/4-20 x .5" Lg.
3	710-0604		Hex Wash Hd. TT-Tap Scr. 5/16-18 x .62" Lg.
4	710-1314		Socket Hd. Bolt 5/16-18 x .62" Lg.
5	721-0208		Exhaust Gasket
6	726-0272		Clamp
7	736-0119		L-Wash. 5/16" I.D.*
8	751-0564		Muffler Deflector
9	751-0617		Muffler
10	751-0618		Exhaust Pipe
11	783-0320		Muffler Bracket
12	783-0385		Shield Bracket

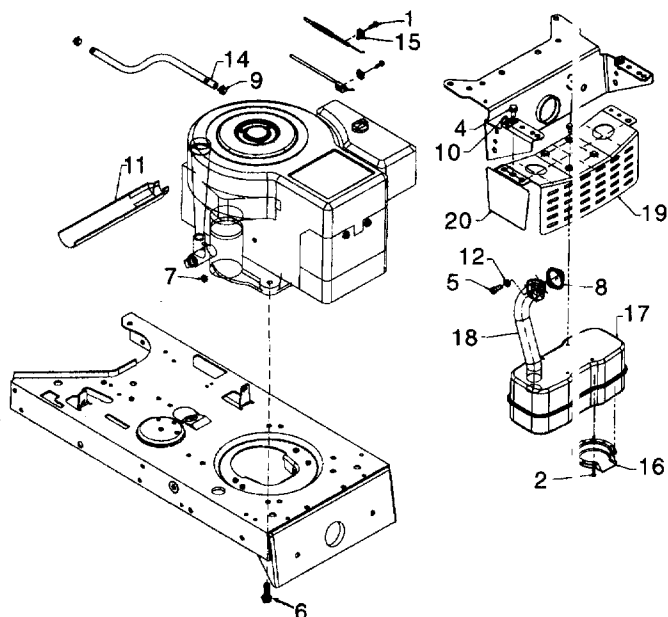
## TECUMSEH



690 THRU 699

Ref. No.	Part No.	Code	Description
1	783-0385		Heat Shield Bracket
2	783-0378		Heat Shield
3	783-0320		Muffler Bracket
4	751-0535-12		Fuel Line
5	751-0360A		Casing Clamp
6	751-0617		Muffler
7	751-0564		Muffler Deflector
8	751-0620		Exhaust Pipe
9	751-0572		Hex Pipe Plug
11	737-0286		Pipe 3/8 NPT x 3.8" Lg.
12	736-0119		L-Wash. 5/16" I.D.*
13	726-0272		Clamp
14	726-0205		Hose Clamp
15	721-0348		Exhaust Gasket
17	712-0271		Hex Sems Nut 1/4-20 Thd.
18	710-1314		Socket Hd. Bolt 5/16-18 x .62" Lg.
19	710-1237		Hex Wash. Hd. Tap Scr. #10-32 x .62" Lg.
20	710-0599		Hex Wash. Hd. TT-Scr. 1/4-20 x .5" Lg.
21	710-0604		Hex Wash. Hd. TT-Scr. 5/16-18 x .62" Lg.
22	710-0148		Hex Bolt #8-32 x .38" Lg.
23	710-1315		Hex Wash. Hd. TT-Scr. 3/8-16 x 1.25" Lg.

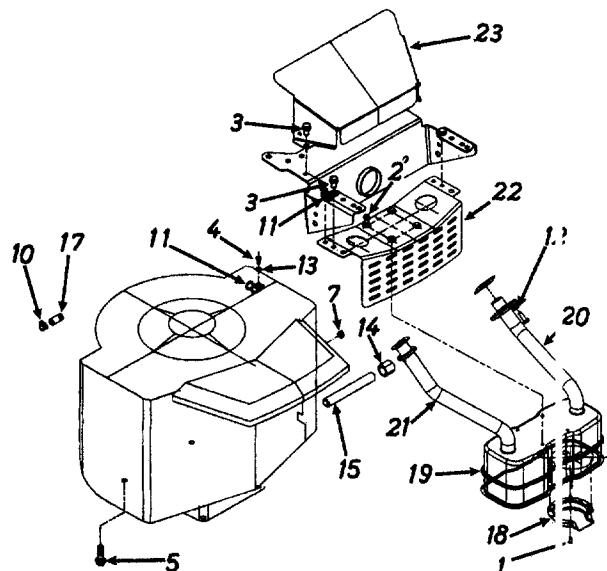
## OVER HEAD VALVE



### 690 THRU 699

Ref. No.	Part No.	Code	Description
1	710-1237		Hex Wash. Scr. #10-32 x .62"
2	710-0148		Hex Tap Scr. #8-32 x .38" Lg.
3	710-0599		Hex TT-Tap Scr. 1/4-20 x .5" Lg.
4	710-0604		Hex TT-Tap Scr. 5/16-18 x .62"
5	710-1314		Socket Head Scr. 5/16-18 x .62"
6	710-1315		Hex TT-Tap Scr. 3/8-16 x 1.25"
7	712-0271		Hex Sems Scr. 1/4-20 Thd.
8	721-0208		Gasket
9	726-0205		Hose Clamp
10	726-0272		Clamp
11	731-1682A	N	Oil Drain Sleeve
12	736-0119		Lock Washer 5/16" I.D.
14	751-0535-12		Fuel Line 12" Lg.
15	751B213146		Casing Clamp
16	751-0564		Muffler Deflector
17	751-0617		Muffler
18	751-0619		Exhaust Pipe
19	783-0320A	N	Muffler Brkt.
20	783-0385		Shield Brkt.

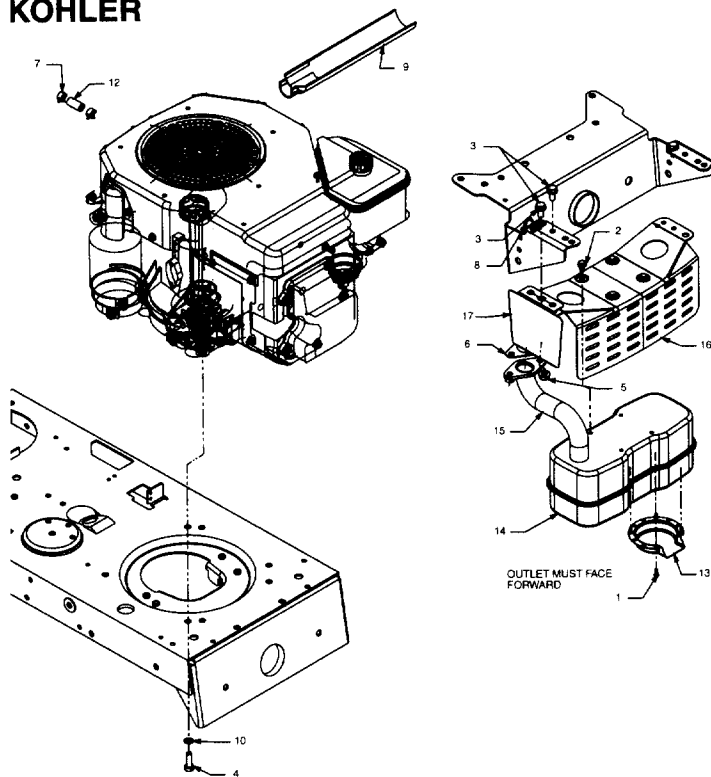
## TWIN CYLINDER



### 690 THRU 699

Ref. No.	Part No.	Code	Description
1	710-0148		Hex Tap Scr. #8-32 x .38" Lg.
2	710-0599		Hex Wash. TT-Tap Scr. 1/4-20 x .5" Lg.
3	710-0604		Hex Wash. TT-Tap Scr. 5/16-18 x .62" Lg.
4	710-0779A		Truss Mach. Scr. #10 x .5" Lg.
5	710-1315		Hex Hd. Tap Scr. 3/8-16 x 1.25" Lg.
6	710-3015		Hex Bolt 1/4-20 x .75" Lg.
7	712-0271		Hex Sems Nut 1/4-20 Thd.
9	721-0346		Exhaust Gasket
10	726-0205		Hose Clamp
11	726-0272		Clamp
12	736-0329		L-Wash. 1/4" I.D.*
13	736-3067		Fl-Wash. .188" I.D. x .438" O.D.
14	737-0143		Oil Drain Cap
15	737-0164		Pipe Nipple 3/8 x 18 NPT.
17	751-0535-26		Fuel Line 26" Lg.
18	751-0564		Deflector: Muffler
19	751-0616		Muffler
20	751-0623		Exhaust Pipe—L.H.
21	751-0624		Exhaust Pipe—R.H.
22	783-0320A	N	Muffler Bracket
23	783-0357		Heat Shield

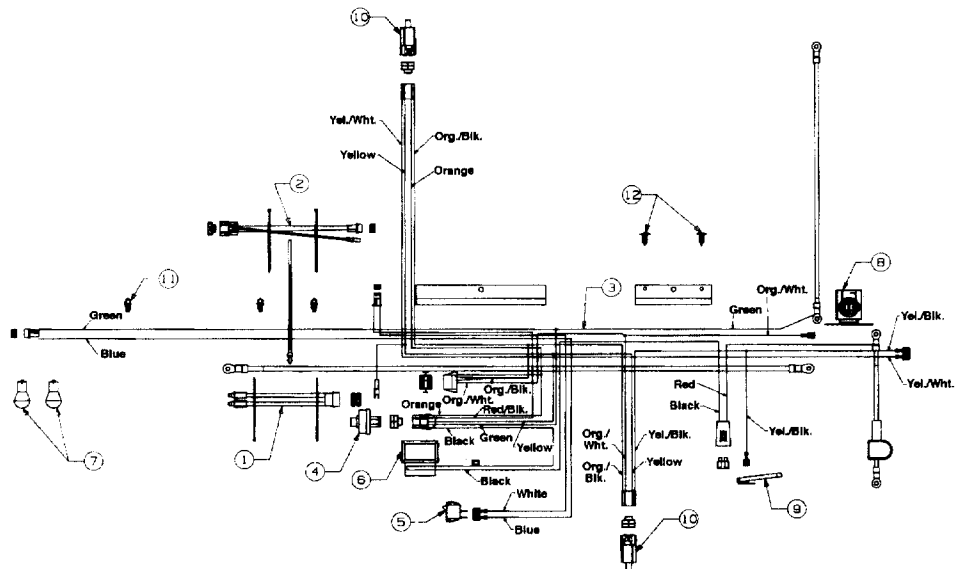
## KOHLER



## 690 THRU 699

Ref. No.	Part No.	Code	Description
1	710-0148		Hex Tap Scr. #8-32 x .38" Lg.
2	710-0599		Hex Wash. TT-Tap Scr. 1/4-20 x 5" Lg.
3	710-0604		Hex Wash. TT-Tap Scr. 5/16-18 x .62" Lg.
4	710-3206A		Hex Bolt M8 x 1.25
5	712-3086		Hex Flange Nut M8 Thd.
6	721-0375		Exhaust Gasket
7	726-0205		Hose Clamp
8	726-0272		Clamp
9	731-1682A		Oil Drain Sleeve
10	736-0607		External L-Wash. 5/16" I.D.
12	751-0535-12		Fuel Line 12" Lg.
13	751-0564		Muffler Deflector
14	751-0617		Muffler
15	751-0621		Exhaust Pipe
16	783-0320A	N	Muffler Bracket
17	783-0385		Shield Bracket.

## KOHLER



## 690 THRU 699

Part No.	Code	Description	Ref. No.	Part No.	Code	Description
726-3046		Ratchet	6	725-0634		Light Switch
725-1657A		Safety Switch	7	725-0267		Ignition Switch
725-1426		Solenoid	8	629-0303A	N	Wire Harness
725-0963		Bulb (Headlight)	9	629-0209		Wire Harness Adapter
725-0925		Ammeter	10	629-0132		Wire Harness (Monitor)