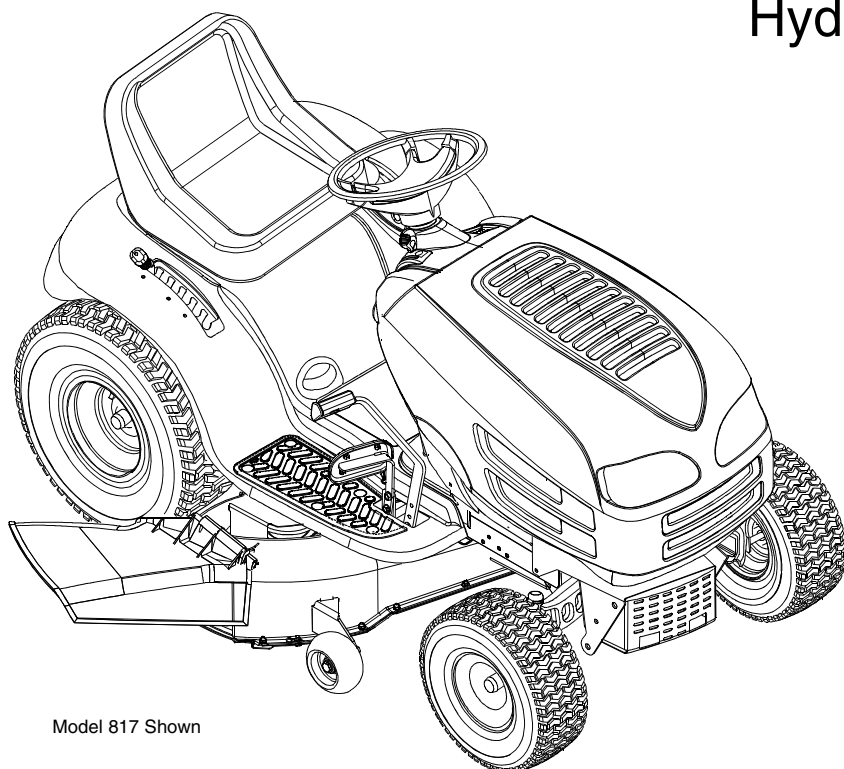


Illustrated Parts List

Hydrostatic Garden Tractor Models 817 818



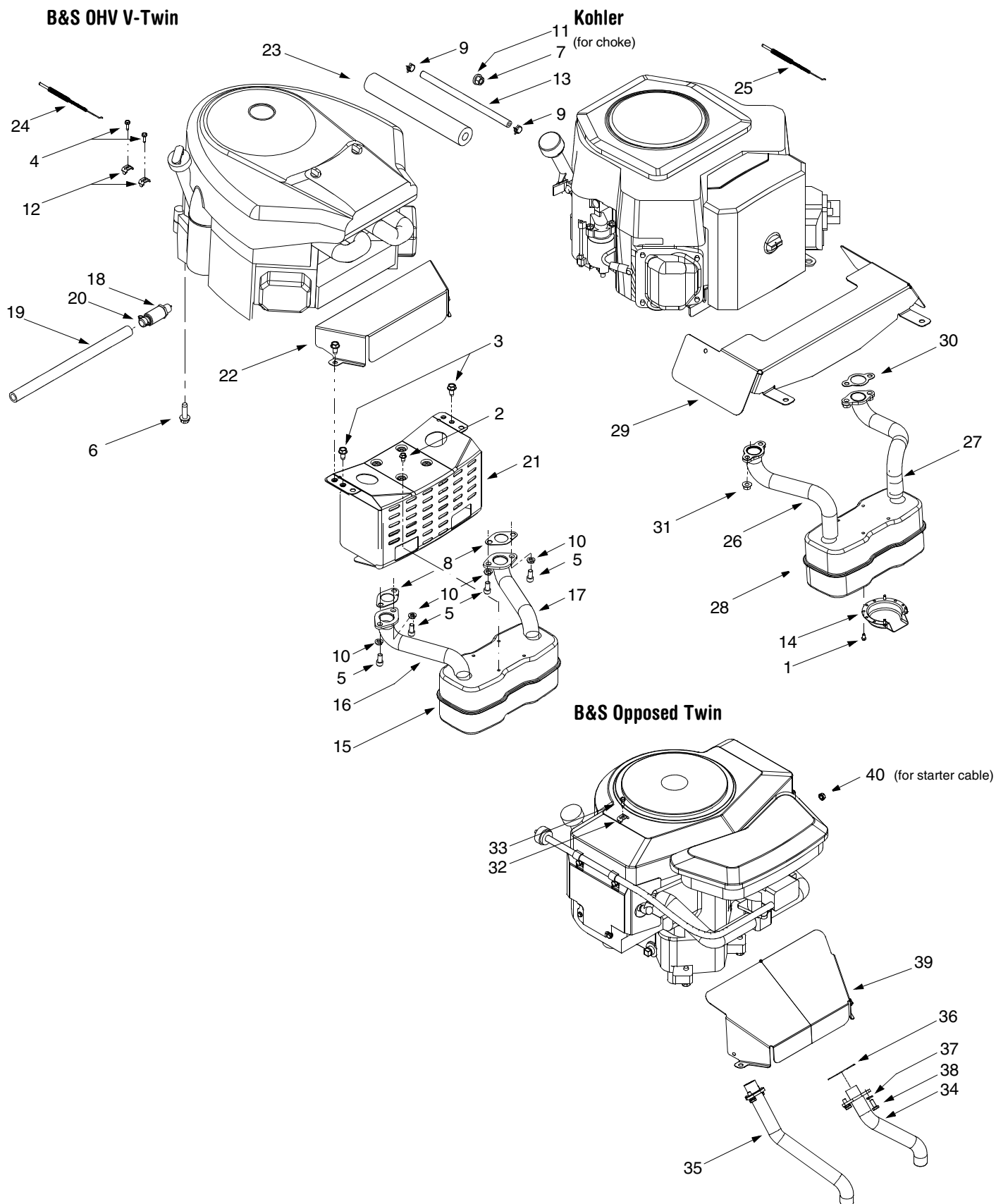
Model 817 Shown

IMPORTANT: READ SAFETY RULES AND INSTRUCTIONS CAREFULLY

Warning: This unit is equipped with an internal combustion engine and should not be used on or near any unimproved forest-covered, brush-covered or grass-covered land unless the engine's exhaust system is equipped with a spark arrester meeting applicable local or state laws (if any). If a spark arrester is used, it should be maintained in effective working order by the operator. In the State of California the above is required by law (Section 4442 of the California Public Resources Code). Other states may have similar laws. Federal laws apply on federal lands. A spark arrester for the muffler is available through your nearest engine authorized service dealer or contact the service department, P.O. Box 361131 Cleveland, Ohio 44136-0019.

MTD LLC, P.O. BOX 361131 CLEVELAND, OHIO 44136-0019

SECTION 12: MODELS 817 & 818 PARTS LIST

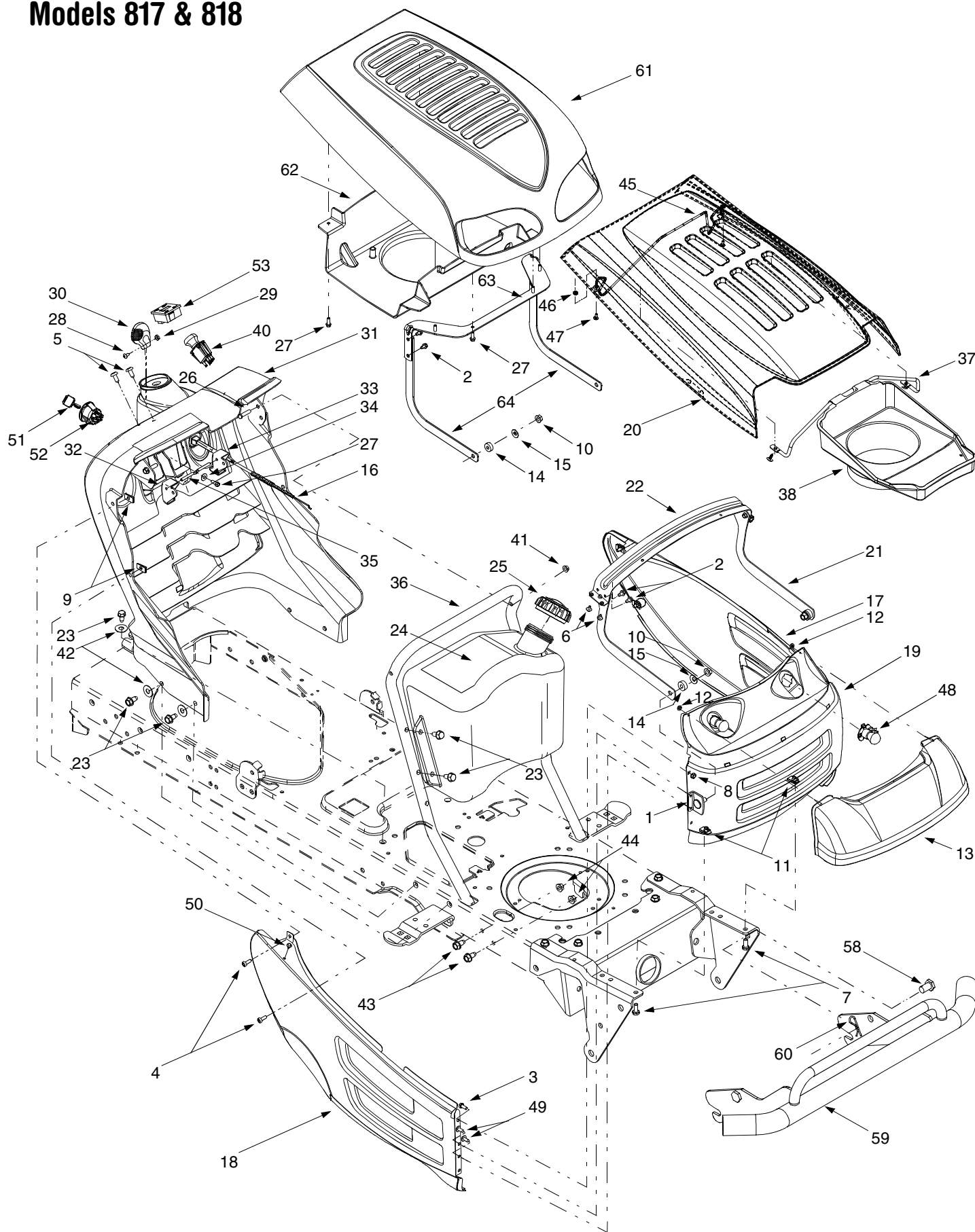


Models 817 & 818

REF. NO.	PART NO.	DESCRIPTION
1	710-0227	Self-tapping Screw, #8-18 x .5
2	710-0599	Self-tapping Screw, 1/4-20 x .5
3	710-0604A	Self-tapping Screw, 5/16-18 x .625
4	710-1237	Screw, #10-32 x .625 (B&S OHV V-Twin)
5	710-1314	Socket Cap Screw, 5/16-18 x .625
6	710-1315	Self-tapping Screw, 3/8-16 x 1.25
7	712-3017	Hex Nut, 3/8-16
8	721-0460	Exhaust Gasket (B&S OHV V-Twin)
9	726-0205	Hose Clamp
10	736-0119	Lock Washer, 5/16
11	736-0300	Flat Washer
12	751B221535	Casing Clamp (B&S OHV V-Twin)
13	751-0535	Fuel Line Hose
14	751-0564	Muffler Deflector
15	751-0616	Muffler, Twin Inlet (B&S OHV V-Twin & Opposed Twin)
16	751-0650	RH Exhaust Pipe (B&S OHV V-Twin)
17	751-0651	LH Exhaust Pipe (B&S OHV V-Twin)
18	751-3140	Oil Drain Valve
19	751-3141	Oil Drain Hose
20	751-3142	Oil Drain Cap
21	783-0615B	Muffler Heat Shield
22	783-0625B	Engine Heat Shield (B&S OHV V-Twin)
23	722-0263	Foam (fits over fuel line)
24	746-1086	Throttle Cable (B&S OHV V-Twin & Opposed Twin)
25	746-1100	Throttle Cable (Kohler)
26	751-0645	RH Exhaust Pipe (Kohler)
27	751-0644A	LH Exhaust Pipe (Kohler)
28	751-0805	Muffler, Twin Inlet (Kohler)
29	783-0881	Engine Heat Shield (Kohler)
30	721-0377	Exhaust Gasket (Kohler)
31	712-3086	Flange Nut, M8 x 1.25-6 (Kohler)
32	726-0272	Clamp, 9/16 (B&S Opposed Twin)
33	712-0779A	Screw, #10-16 x .5 (B&S Opposed Twin)
34	751-0623	LH Exhaust Pipe (B&S Opposed Twin)
35	751-0624	RH Exhaust Pipe (B&S Opposed Twin)
36	721-0346	Exhaust Gasket (B&S Opposed Twin)
37	736-0329	Lock Washer, 1/4 (B&S Opposed Twin)
38	710-0751	Hex Screw, 1/4-20 x .620 (B&S Opposed Twin)
39	783-0357A	Heat Shield (B&S Opposed Twin)
40	712-0271	Hex Sems Nut, 1/4-20 (B&S Opposed Twin)

NOTE: Engine accessory parts are applicable to all model 817 and 818 Garden Tractors except where otherwise noted.

Models 817 & 818

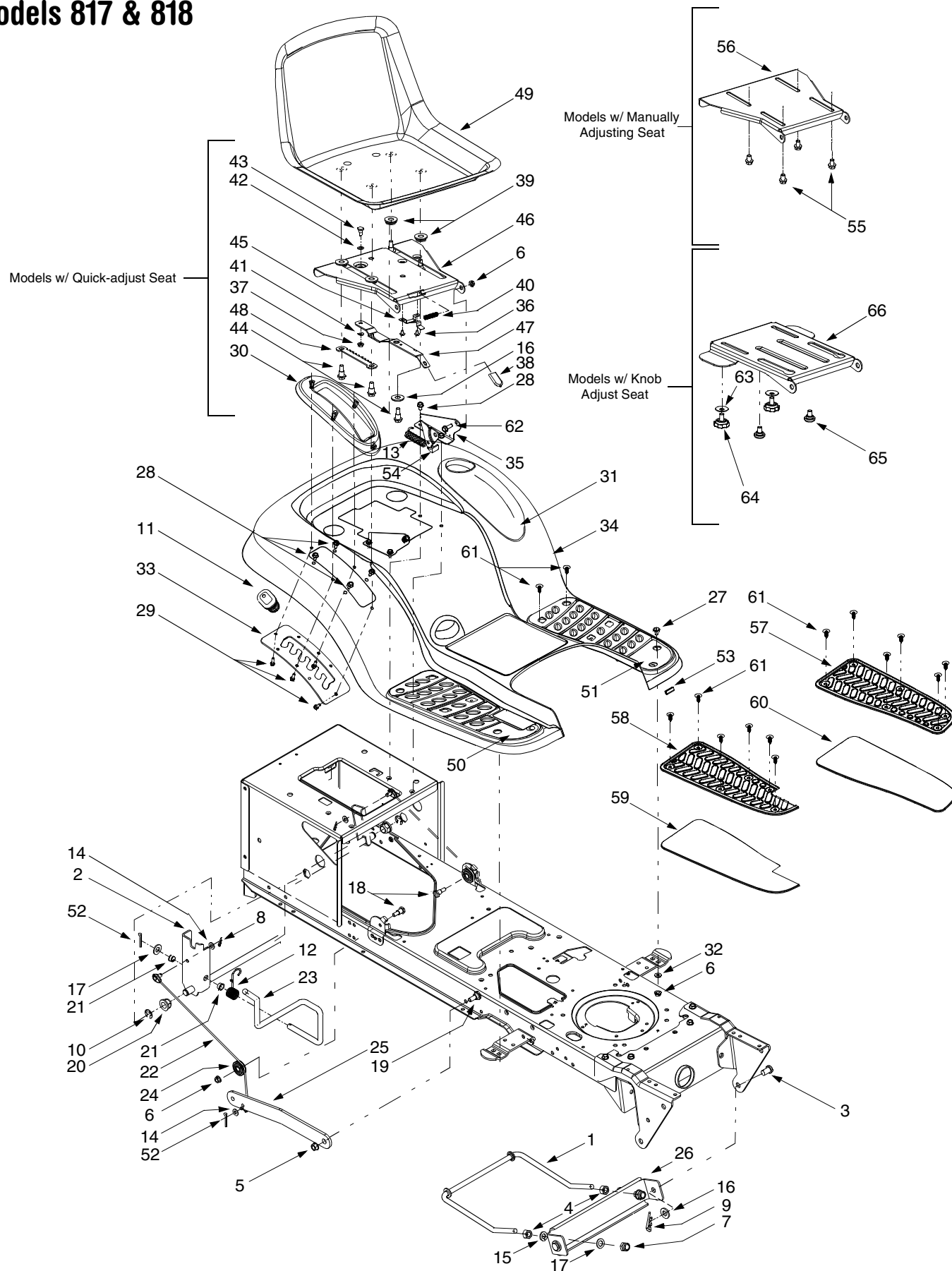


Models 817 & 818

REF. NO.	PART NO.	DESCRIPTION	REF. NO.	PART NO.	DESCRIPTION
1	683-0195	Bracket Assembly (8-style)	39	726-3046	Ratchet Clip
2	710-0599	Self-tapping Screw, 1/4-20 x .5	40	725-1752	Electric PTO Switch
3	710-0751	Hex Cap Screw, 1/4-20 x .62	41	712-3027	Hex Flange Lock Nut, 1/4-20
4	710-0924	Phillips Pan Screw, 1/4-20 x .75	42	736-3078	Flat Washer, .349 x 1.0 x .063
5	710-1017	Truss Phillips Screw, 1/4-20 x .625	43	710-1238	Screw, 5/16-18 x .875 (Grade 5)
6	710-1268	Screw, #10-16 x .375	44	712-3004A	Hex Nut, 5/16-18
7	710-0376	Hex Cap Screw, 5/16-18 x 1.0	45	747-1215A	Hood Latch
8	712-0271	Hex Sems Nut, 1/4-20	46	712-0272	Hex Sems Nut, #10-32
9	712-0292	U-type Speed Nut, 1/4-20	47	710-0473	Machine Screw, #10-24
10	712-0431	Flange Lock Nut, 3/8-16	48	625-0051	Headlight Assembly
11	726-0211	U-nut, 5/16-18	49	710-0896	Hex Index Washer Screw, 1/4-14 x .0625
12	726-0293	Retainer Nut, 3/8	50	735-0199A	Rubber Bumper
13	731-1854A	Headlight Lens (8-style)	51	725-1745	Ignition Key w/ plastic cover
14	735-0126	Rubber Washer, .87 x .33		725-1744	Ignition Key w/o plastic cover
15	736-0105	Bell Washer, .401 x .87 x .063	52	725-1741	Ignition Switch
16	746-1085	Choke Knob/Cable	53	725-1976	Systems Indicator Monitor w/ Hour Meter
17	783-0475A	LH Side Panel (8-style)		725-1758	Systems Indicator Monitor w/ Ammeter
18	783-0476B	RH Side Panel (8-style)	58	711-0332	Clevis Pin, .50 x .78
19	783-0477A	Grill (8-style)	59	768-0010	Bumper Assembly
20	783-0478A	Hood (8-style)	60	714-0145	Internal Cotter Pin
21	783-1309	Hood Hinge Bracket	61	731-2300	Hood, Red (7-Style)
22	783-0553A	Hood Support Bracket		731-2301	Hood, Green (7-Style)
23	710-0604A	Self-tapping Screw, 5/16-18 x .625		731-2302	Hood, Black (7-Style)
24	751-0658D	Fuel Tank, Three Gallon		731-2303	Hood, Charcoal Grey (7-Style)
	751-0659A	Fuel Tank, Two Gallon (Shown)	62	731-2306	Hood Plenum, 7-Style (w/o Intake Bellow)
25	751-0603	Fuel Cap (Fits Either Tank)	—	731-2233	Intake Bellow
26	710-0809	Self-tapping Screw, 1/4-20 x 1.25			(7-Style Hood with B&S Opposed Twin)
27	710-0895	Self-tapping Screw, 1/4-15 x .75	—	731-2234	Intake Bellow
28	710-3217	Truss Phillips Screw, #8-32 x .375			(7-Style Hood with B&S OHV V-Twin)
29	712-0142	Hex Nut, #8-32	—	N/A	Intake Bellow (8-style with Kohler engine)
30	731-1857	Throttle Control Knob	63	783-1034	Hood Bracket (7-Style)
31	731-2225	Dash Panel (Models w/ Electric PTO)	64	783-1038A	Hood Side Bracket (7-Style)
	731-2122	Dash Panel (Models w/ Manual PTO)	—	629-0309	Headlight Wire Harness
32	731-2226	Cruise Control Button	—	629-1067	Tractor Wire Harness
33	731-2227	Parking Brake Button			(Models with Electric PTO & Hour Meter)
34	736-0142	Flat Washer, 9/32 x 1/2 x 1/16	—	629-1068	Tractor Wire Harness
35	747-1196	Brake/Cruise Pivot Rod			(Models with Electric PTO & Ammeter)
36	749-1087A	Dash Support Tube	—	629-1069	Tractor Wire Harness
37	747-1184	Hood Plenum Support Rod			(Models with Kohler Engine)
38	731-2247	Hood Plenum	—	629-1071	Tractor Wire Harness
		(8-style with B&S OHV V-Twin)			(Models with Manual PTO & Hour Meter)
	731-2248	Hood Plenum	—	629-04051	Tractor Wire Harness
		(8-style with B&S Opposed Twin)			(Models with Manual PTO & Ammeter)
	N/A	Hood Plenum (8-style with Kohler engine)			

NOTE: Tractor features vary by model. NOT all parts listed above and pictured on the previous page are standard equipment.

Models 817 & 818



Models 817 & 818

REF. NO.	PART NO.	DESCRIPTION	REF. NO.	PART NO.	DESCRIPTION
1	747-1130B	Deck Stabilizer Rod	35	783-0715A	Seat Mounting Bracket
2	683-0197B	Lift Shaft Assembly	36	710-1268	Screw, #10-16 x .375
3	711-0332	Clevis Pin, .5 x .78	37	712-3027	Hex Flange Lock Nut, 1/4-20
4	712-0206	Hex Nut, 1/2-13	38	720-0309A	Seat Adjuster Grip
5	712-0431	Flange Lock Nut, 3/8-16	39	731-1989	Spacer
6	712-3004A	Flange Lock Nut, 5/16-18	40	732-0499	Compression Spring, .41 x 1.5
7	712-3083	Hex Nut, 1/2-13	41	736-0175	Spring Washer, .265 x .562 x .025
8	714-0104	Internal Cotter Pin	42	736-0204	Flat Washer, .344 x .62 x .03
9	714-0145	Internal Cotter Pin	43	738-0137A	Shoulder Screw, .340 x .285, 1/4-20
10	716-0106	E-ring	44	738-1007	Shoulder Screw, .50 x .50, 3/8-16
11	720-0311	Handle Grip	45	783-0611	Seat Stop
12	732-0874	Torsion Spring	46	783-0738	Seat Pivot Bracket
13	732-1027	Extension Spring, .872 x 3.4	47	783-0739	Seat Adjustment Lever
14	736-0275	Flat Washer, 5/16	48	783-0753	Seat Adjustment Selector
15	736-0921	Lock Washer, 1/2	49	757-04003	High Back Seat, Black
16	736-3019	Flat Washer, .31 x 1.062 x .134		757-04002	Medium Back Seat, Black
17	736-3084	Flat Washer, .51 x 1.12 x .06		757-04001	Low Back Seat, Black
18	738-0138A	Hex Cap Screw, 5/16-18 x .62	50	735-0656	RH Foot Pad, Rubber (4-Style Fender)
19	738-0143	Shoulder Screw, 3/8-16	51	735-0657	LH Foot Pad, Rubber (4-Style Fender)
20	741-0225	Hex Flange Bearing	52	714-0111	Cotter Pin
21	741-0715	Snap Flange Bearing	53	731-0511	Trim Strip
22	746-0968	Lift Cable, 16.16	54	783-0209	Seat Lift Bracket
23	747-1111A	Lift Handle	55	710-0870	Hex Head Washer Screw, 3/8-16 x .625
24	756-1154	Roller Pulley	56	783-0740	Seat Pivot Bracket, Manually Adjusted
25	783-0678A	Arm Lift	57	735-0672	RH Foot Pad, Rubber (7-Style Fender)
26	783-0720A	Deck Stabilizer Bracket	58	735-0673	LH Foot Pad, Rubber (7-Style Fender)
27	710-0260A	Carriage Bolt, 5/16 x .62	59	723-0484	RH Foot Pad, Grit (7-Style Fender)
28	710-0604A	Self-tapping Screw, 5/16-18 x .625	60	735-0483	LH Foot Pad, Grit (7-Style Fender)
29	710-0895	Self-tapping Screw, 1/4-15 x .75	61	726-3046	Ratchet Clip
30	731-1990	Lift Lever Cover	62	738-0296	Shoulder Screw, .437 x .286
31	731-1993	Cover w/ Cup Holder	63	736-0331	Bell Washer, .390 x 1.13 x .062
32	736-3078	Flat Washer, .349 x 1.0 x .063	64	720-04009	Knob, 3/8-16
33	783-0677	Lift Adjustment Bracket	65	738-04012	Shoulder Screw
34	783-0685B	Fender, 4-Style† (Shown)	66	783-04081	Seat Pivot Bracket
	783-0840A	Fender, 7-Style‡			

† Models equipped with a 4-style fender can accept both the lift lever cover and cover w/ cup holder (Ref. 30 & Ref. 31).

‡ Models equipped with a 7-style fender **cannot** accept the lift lever cover or cover w/ cup holder (Ref. 30 & Ref. 31).

NOTE: Tractor features vary by model. NOT all parts listed above and pictured on the previous page are standard equipment.

Models 817 & 818

This exploded view diagram illustrates the assembly of a mechanical component, likely a wheel or a similar rotating part, for Models 817 and 818. The diagram shows the following components and their assembly sequence:

- Base Assembly:** The main body of the assembly, consisting of a central hub (1) and a base plate (2).
- Mounting Brackets:** Two mounting brackets (3 and 4) are shown, which are attached to the base plate (2) using screws (5 and 6).
- Support Structure:** A support structure (7) is shown, which is attached to the base plate (2) using screws (8 and 9).
- Internal Components:** The internal components include a central shaft (10) and a series of internal gears or bearings (11, 12, 13, 14, 15, 16, 17, 18, 19, 20, 21, 22, 23, 24, 25, 26, 27, 28, 29, 30, 31, 32, 33, 34, 35, 36, 37, 38, 39, 40, 41, 42, 43, 44, 45, 46, 47, 48).
- Final Assembly:** The final assembly is shown, consisting of a central hub (1) and a base plate (2) with the internal components (11-48) and mounting brackets (3 and 4) attached.

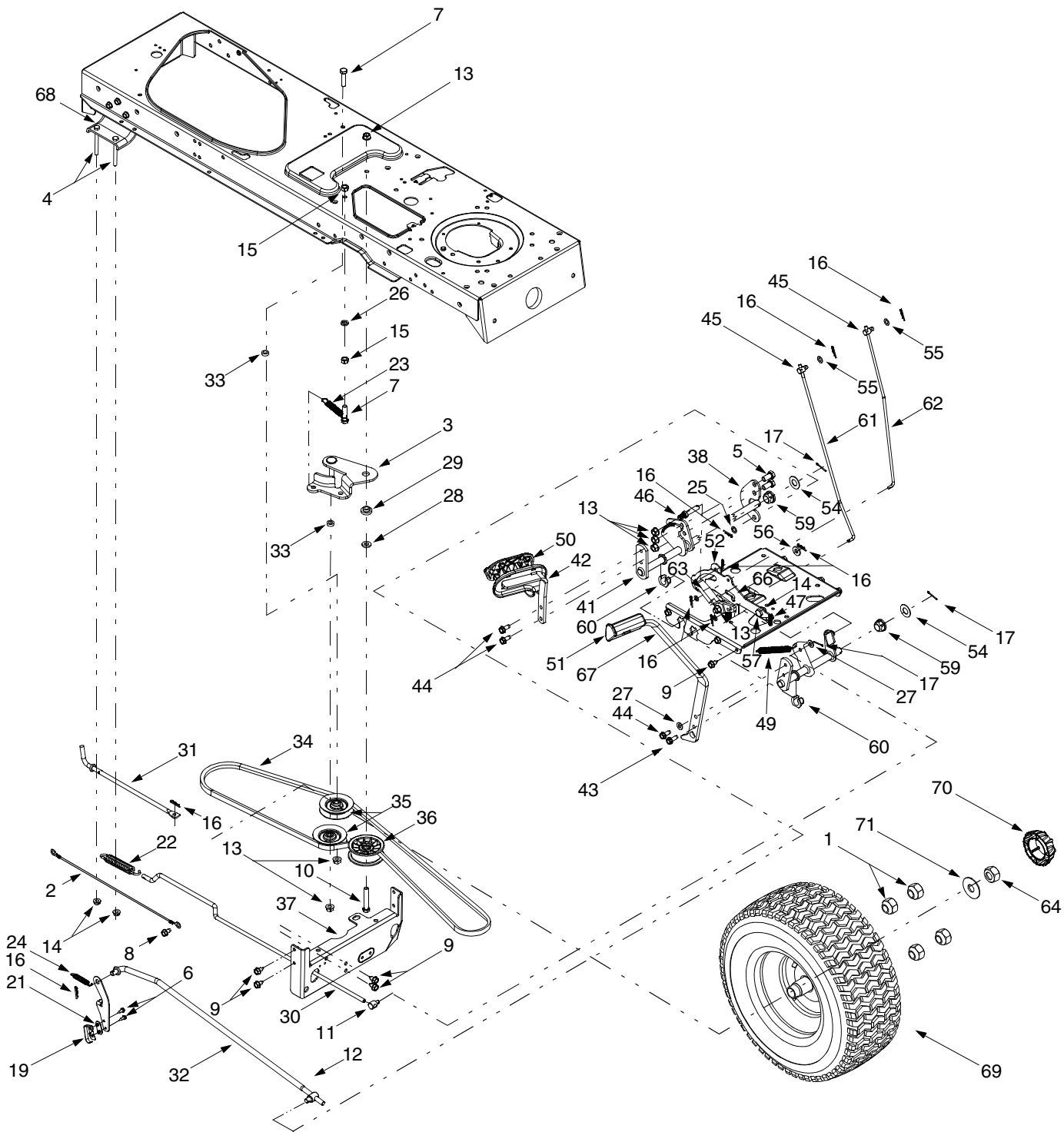
The diagram uses numbered callouts (1 through 48) to identify each individual part and its position within the assembly. Dashed lines indicate the assembly path and the relative positions of the components.

Models 817 & 818

REF. NO.	PART NO.	DESCRIPTION
1	731-1649	Pivot Bar End Cap w/o Fitting
2	710-0604A	Self-tapping Screw, 16-18 x .625
3	683-0590	RH Pivot Support Bracket
4	683-0589	LH Pivot Support Bracket
5	783-0728	Pivot Bar Bracket
6	710-0514	Hex Cap Screw, 3/8-16 x 1 (Grade 5)
7	711-1408	RH Drag Link
8	711-1409A	LH Drag Link
9	712-0240	Jam Nut, 7/16-20 (Grade 2)
10	712-0241	Hex Nut, 3/8-24 (Grade 2)
11	712-0431	Flange Lock Nut, 3/8-16
12	712-0459	Flange Lock Nut, 7/16-20
13	712-3004A	Flange Lock Nut, 5/16-18
14	717-1550D	Steering Gear, 11/90 Ratio
15	717-1554	Steering Pinion Gear
16	723-0448A	Ball Joint, 7/16-20
17	736-0169	Lock Washer, 3/8
18	736-3084	Flat Washer, .51 x 1.12 x .06
19	738-1001A	Steering Shaft, .625 OD x 24.4
20	741-0475	Plastic Bushing, .38 ID
21	741-0656	Hex Flange Bearing, 5/8
22	738-0372	Shoulder Spacer, .38 ID
23	731-1869	Deluxe Steering Wheel
24	731-1904	Steering Wheel Cap, w/ Icon
25	638-0017	LH Axle Assembly, .75 Diameter
26	638-0018	RH Axle Assembly, .75 Diameter
27	719-0525B	Cast Iron Pivot Bar w/ Fittings, .75
28	712-0431	Flange Lock Nut, 3/8-16
29	714-0470	Cotter Pin
30	726-0214	Push Cap, .625
31	736-0162	Flat Washer, .64 x 1.0 x .12
32	736-0316	Flat Washer, .78 x 1.59 x .06
33	736-0285	Flat Washer, .635 x 1.589 x .06
34	738-1011	Shoulder Screw, .5 x 2.2, 3/8-16
35	710-0643	Hex Bolt, 5/16-18 X 1
36	634-0183	Wheel Assembly Complete, 16 x 6.5 x 8
	634-0182	Rim Only w/ Plastic Bearing
	734-0255	Air Valve (Not Shown)
	734-1727	Tire Only, Square Shoulder
37	734-2290	Deluxe Hub Cap (Ref. 33 Required)
38	783-0653F	Steering Support Bracket
39	738-0143	Shoulder Screw, 3/8-16
40	736-0331	Bell Washer, .39 x 1.13 x .062
41	710-1260A	Self-tapping Screw, 5/16-18 x .75
42	736-0242	Bell Washer, .34 x .872
43	741-0660	Flange Bearing, .760 ID x .937 OD
44	683-0128A	Pivot Bar, Steel
45	731-1291A	Pivot Bar End Cap w/ Fitting
46	631-0027	Standard Steering Wheel, 13.25
47	731-0220	Steering Wheel Cap, Round
48	731-0484A	Standard Hub Cap (Ref. 33 Not Necessary)

NOTE: Tractor features vary by model. NOT all parts listed above and pictured on the previous page are standard equipment.

Models 817 & 818



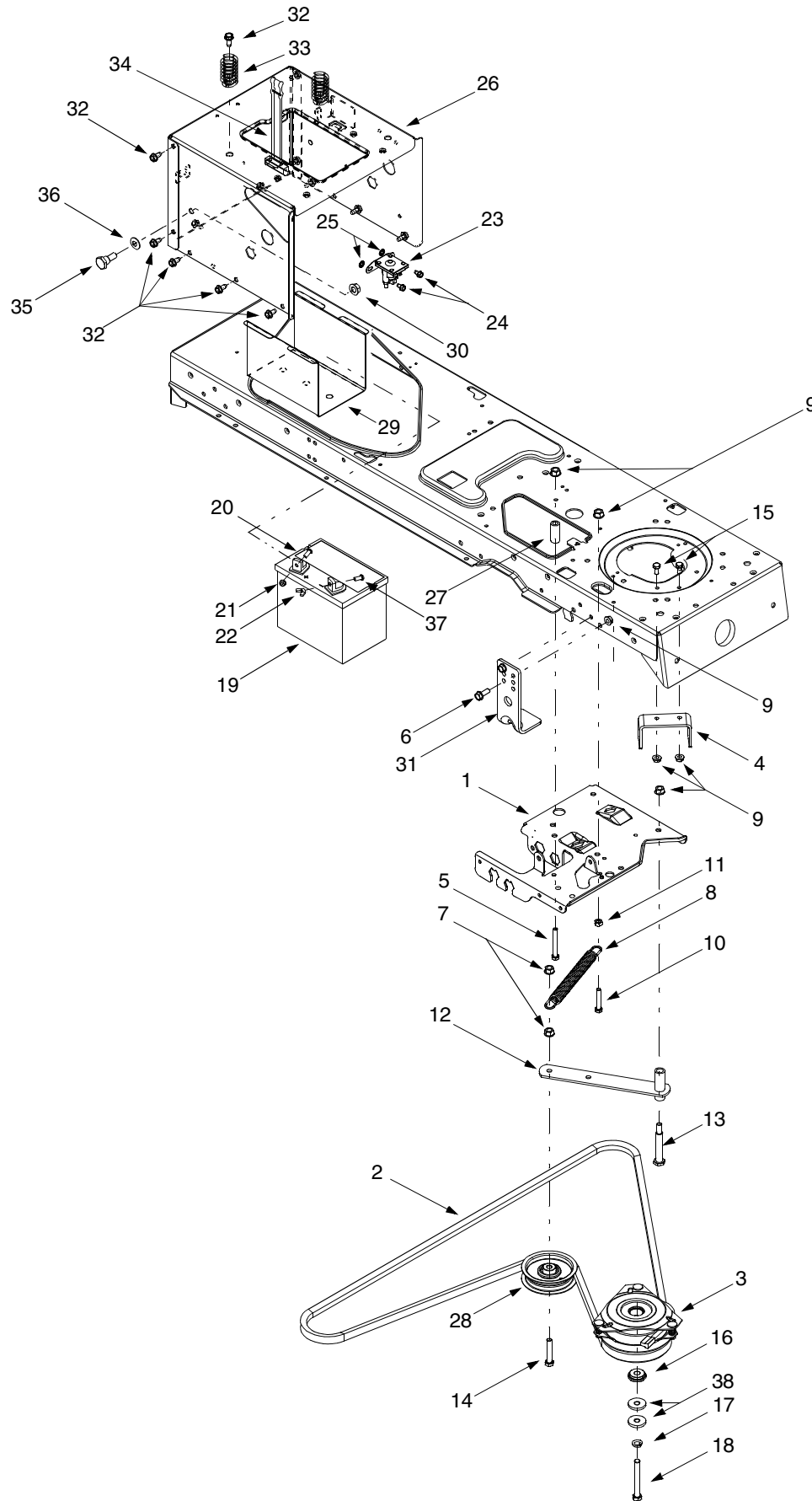
Models 817 & 818

REF. NO.	PART NO.	DESCRIPTION	REF. NO.	PART NO.	DESCRIPTION
1	712-3050	Lug Nut, 3/4-16	39	783-0782	Switch Actuator Bracket
2	629-0949A	Reverse/Ground Wire Harness Adapter	40	647-0031	Brake Control Assembly
3	683-0251	Double Idler Bracket Assembly	41	647-0049	Drive Control Assembly
4	710-0189	Hex Cap Screw, 5/16-18 x 3.00	42	683-0267A	Hydro Pedal Assembly
5	710-0216	Hex Cap Screw, 3/8-16 x .75	43	710-1650	Self-tapping Screw, 5/16-18 x .875
6	710-0227	Screw, #8-18 x .5	44	710-1260A	Self-tapping Screw, 5/16-18 x .75
7	710-0344	Hex Cap Screw, 3/8-16 x 1.5	45	711-0736	Ferrule, 1/4-20
8	710-0599	Self-tapping Screw, 1/4-20 x .50	46	711-1363	Pin, 3/8-16 x 2.43
9	710-0604A	Self-tapping Screw, 5/16-18 x .625	47	732-0437	Compression Spring, .34 OD x 1.0
10	710-3011	Hex Cap Screw, 3/8-16 x 2.25	48	732-0955	Extension Spring, .50 OD x 1.41
11	711-0677	Ferrule, 5/16-18	49	732-0963	Extension Spring, .50 OD x 6.37
12	711-0832	Ferrule, 3/8-24	50	735-0662	Drive Pedal Pad
13	712-0431	Flange Lock Nut, 3/8-16	51	735-3049	Brake Pedal Pad
14	712-3004A	Flange Lock Nut, 5/16-18	52	736-0133	Flat Washer, .411 x 1.25 x 1.0
15	712-3017	Hex Nut, 3/8-16	53	736-0142	Flat Washer, .281 x .50 x .063
16	714-0104	Internal Cotter Pin	54	736-0187	Flat Washer, .64 x 1.24 x .06
17	714-0111	Cotter Pin	55	736-0204	Flat Washer, .344 x .062 x .03
18	725-0157	Cable Tie	56	736-3004	Flat Washer, .406 x .875 x .105
19	725-1644	Short Spring Switch	57	738-0155	Shoulder Screw, .437 x 1.62
20	726-0154	Push-mount Cable Tie	58	738-0507B	Shoulder Screw, .5 x .434
21	726-0320	Insulator Nut Plate	59	741-0225	Hex Flange Bearing
22	732-0716	Extension Spring, .59 x 4.0	60	741-3065A	Split Hex Flange Bearing
23	732-0965	Extension Spring, .5 x 3.5	61	747-1137	Cruise Control Rod
24	732-3118	Extension Spring, 3/8 x 1.44	62	747-1138	Brake Lock Control Rod
25	736-0140	Flat Washer, .385 x .62 x .063	63	748-0413	Cruise Latch
26	736-0169	Lock Washer, 3/8	64	712-3026	Jam Nut, 3/4-16
27	736-0275	Flat Washer, .344 x .688 x .065	65	783-0653C	Steering Support Bracket
28	736-3010	Flat Washer, .407 x .812 x .135	66	783-0663A	Drive Lockout Bracket
29	738-0372	Shoulder Spacer, .38	67	783-0773	Brake Pedal
30	747-1119	Hydrostatic Control Rod	68	783-0693	Transmission Axle Bracket
31	747-1121	Hydrostatic Bypass Rod	69	634-0132	Wheel Assembly Complete, 23 x 9.5 x 12
32	747-1122	Hydrostatic Brake Rod		634-0194	Rim Only
33	750-0535	Spacer, .376 x .625 x .22		734-0255	Air Valve
34	754-0349	Drive Belt		734-1728	Tire Only, Square Shoulder
35	756-0116	V-idler Pulley, 3.06	70	734-2290	Hub Cap
36	756-0981A	Flat Idler Pulley, 2.75	71	736-0316	Flat Washer, .780 x 1.59 x .062
37	783-0667A	Transmission Torque Bracket	—	618-0379	Hydrostatic Transmission Assembly
38	783-0745	Speed Control Bracket			

IMPORTANT: For a proper working machine, use Factory Approved Parts. **V-belts** are designed to engage and disengage safely. A substitute (non OEM) V-belt can be dangerous by not disengaging completely.

NOTE: Tractor features vary by model. *NOT* all parts listed above and pictured on the previous page are standard equipment.

Models 817 & 818 (w/ Electric PT0)



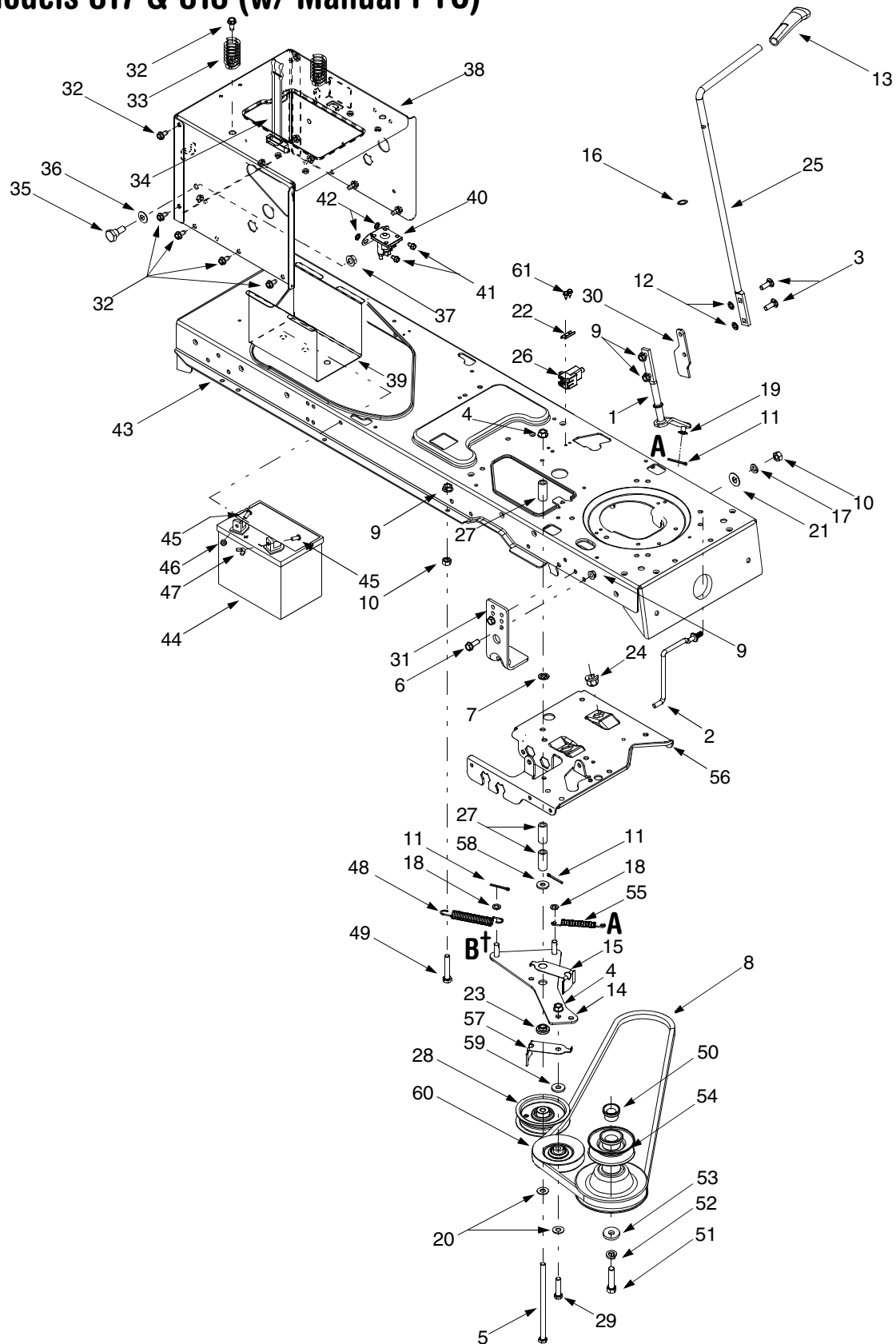
Models 817 & 818

REF. NO.	PART NO.	DESCRIPTION
1	783-0653F	Steering Support Bracket
2	754-0476	PTO Belt (Models w/ 46-inch deck)
	754-0475	PTO Belt (Models w/ 50-inch deck)
3	717-1709	Electric PTO Clutch
4	783-1003	Electric Clutch Anti-rotation Bracket
5	710-0859	Hex Cap Screw, 3/8-16 x 2.5
6	710-1238	Hex Head Washer Screw, 5/16-18 x .875
7	712-0431	Flange Lock Nut, 3/8-16
8	732-0978	Extension Spring, .62 x 5.62
9	712-3004A	Flange Lock Nut, 5/16-18
10	710-3180	Hex Cap Screw, 5/16-18 x 1.75
11	712-3010	Hex Nut, 5/16-18
12	683-0294	Idler Bracket Assembly
13	738-3056	Shoulder Screw, 1/2 x 2.5
14	710-3144	Hex Cap Screw, 3/8-16 x 2.0
15	710-3025	Hex Cap Screw, 5/16-18 x .625
16	738-0785	Shoulder Spacer, 1.38 x .445 x .36
17	736-0171	Lock Washer, 7/16
18	710-3157	Hex Cap Screw, 7/16-20 x 3.25 (Grade 5)
19	725-1706	12-volt Battery, 270 CCA
20	710-0751	Hex Cap Screw, 1/4-20 x .62
21	712-0271	Hex Sems Nut, 1/4-20
22	712-3087	Wing Nut, 1/4-20
23	725-1426	Solenoid, 12-Volt, 100 Amp
24	710-0599	Self Tapping Screw, 1/4-20 x .5
25	736-0222	Lock Washer, 1/4
26	783-1033A	Hitch Plate
27	748-0415B	Spacer, 3/8 x 1.54
28	756-0627B	Idler Pulley, 3.5
29	783-0349	Battery Tray
30	712-0459	Flange Lock Nut, 7/16-20
31	783-0891B	Deck Stop
32	710-0604A	Self Tapping Screw, 5/16-18 x .625
33	732-04035	Compression Spring, 1.28 x 3.125
34	723-0444	Battery Strap
35	738-1020	Shoulder Screw, .625 x .5, 7/16-20
36	736-0407	Bell Washer, .45 x 1.0 x .062
37	738-1132	Shoulder Screw, 1/4-20, .25 x .15
38	736-0322	Flat Washer, .45 x 1.25 x .164

IMPORTANT: For a proper working machine, use Factory Approved Parts. **V-belts** are designed to engage and disengage safely. A substitute (non OEM) V-belt can be dangerous by not disengaging completely.

NOTE: Tractor features vary by model. *NOT* all parts listed above and pictured on the previous page are standard equipment.

Models 817 & 818 (w/ Manual PTO)



† Refer to **B** on page 42 and page 44.

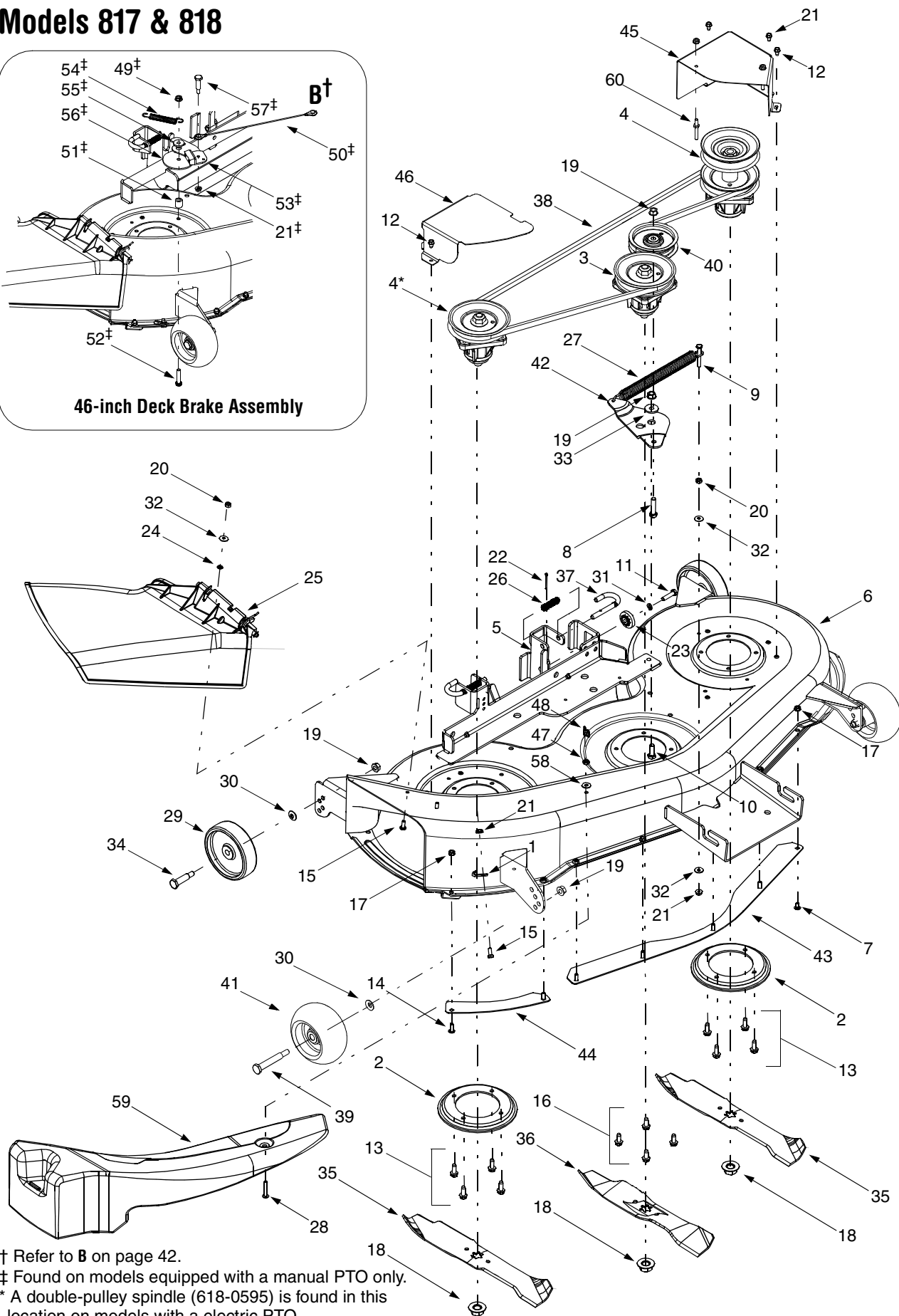
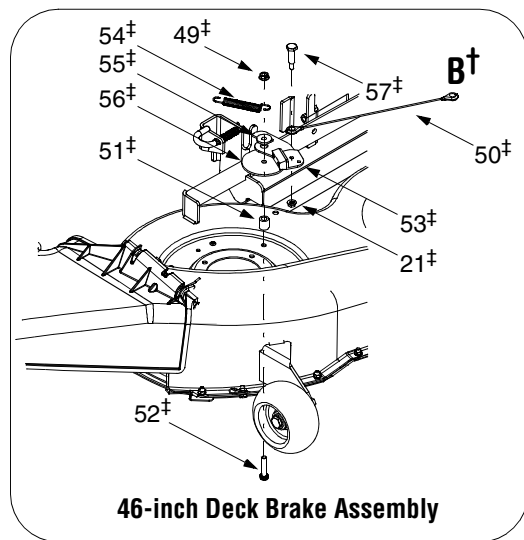
Models 817 & 818

REF. NO.	PART NO.	DESCRIPTION	REF. NO.	PART NO.	DESCRIPTION
1	647-0064	PTO Engage Lever Assembly	31	783-0891B	Deck Stop
2	747-1243	Belt Keeper Rod	32	710-0604A	Self Tapping Screw, 5/16-18 x .625
3	710-0276	Carriage Screw, 5/16-18 x 1.00	33	732-04035	Compression Spring, 1.28 x 3.125
4	712-0431	Flange Lock Nut, 3/8-16	34	723-0444	Battery Strap
5	710-3261	Hex Cap Screw, 3/8-16 x 7.0	35	738-1020	Shoulder Screw, .625 x .5, 7/16-20
6	710-1238	Hex Head Washer Screw, 5/16-18 x .875	36	736-0407	Bell Washer, .45 x 1.0 x .062
7	712-0229	Push Nut, 3/8	37	712-0459	Flange Lock Nut, 7/16-20
8	754-0228	PTO Belt (Models w/ 46-inch deck)	38	783-1033A	Hitch Plate
	754-0488	PTO Belt (Models w/ 50-inch deck)	39	783-0349	Battery Tray
9	712-3004A	Flange Lock Nut, 5/16-18	40	725-1426	Solenoid, 12-Volt, 100 Amp
10	712-3010	Hex Nut, 5/16-18	41	710-0599	Self Tapping Screw, 1/4-20 x .5
11	714-0470	Cotter Pin, 1/8 x 1.25	42	736-0222	Lock Washer, 1/4
12	726-0201	Speed Nut, .3125	43	683-0304C	Lower Frame Assembly
13	731-2111A	PTO Knob	44	725-1706	12-volt Battery, 270 CCA
14	683-04060	PTO Engagement Plate Assembly	45	710-0751	Hex Cap Screw, 1/4-20 x .62
15	732-0991A	Belt Guard	46	712-0271	Hex Sems Nut, 1/4-20
16	736-0108	Flat Washer, .510 x .750 x .033	47	712-3044	Wing Nut, 1/4-20
17	736-0119	Lock Washer, 5/16	48	732-1165	Extension Spring, .50 x 5.0
18	736-0140	Flat Washer, .385 x .62 x .063	49	710-3180	Hex Cap Screw, 5/16-18 x 1.75
19	736-0275	Flat Washer, 5/16	50	750-0596	Spacer Cup
20	736-0300	Flat Washer, .406 x .875 x .059	51	710-3029	Hex Head Cap Screw, 7/16-20 x 1.25
21	736-0242	Bell Washer, .35 x .872 x .060	52	736-0171	Lock Washer, 7/16
22	17962	Switch Plate	53	736-0322	Flat Washer, .450 x 1.25
23	738-0372B	Shoulder Spacer, .380	54	756-1183A	Engine Pulley, 3.56 OD x 5.56
24	741-0708	Hex Split Flange Bearing, .5	55	732-0944	Extension Spring, .75 x 6.75
25	747-1112D	PTO Engagement Handle	56	783-0653F	Steering Support Bracket
26	725-1657A	Interlock Switch	57	732-1013	Belt Guard
27	748-0415B	Spacer, 3/8 x 1.54	58	736-3072	Flat Washer, .38 x .93 x .110
28	756-0627B	Idler Pulley, Flat, 3.5	59	736-0258	Flat Washer, .385 x 1.0 x .135
29	710-0344	Hex Cap Screw, 3/8-16 x 1.5	60	754-0487	Idler Pulley, V-Type, 4.0
30	783-0744A	Engagement Stop	61	710-0224	Screw, #10-16 x .5

IMPORTANT: For a proper working machine, use Factory Approved Parts. **V-belts** are designed to engage and disengage safely. A substitute (non OEM) V-belt can be dangerous by not disengaging completely.

NOTE: Tractor features vary by model. NOT all parts listed above and pictured on the previous page are standard equipment.

Models 817 & 818



† Refer to **B** on page 42.

‡ Found on models equipped with a manual PTO only.

* A double-pulley spindle (618-0595) is found in this location on models with a electric PTO.

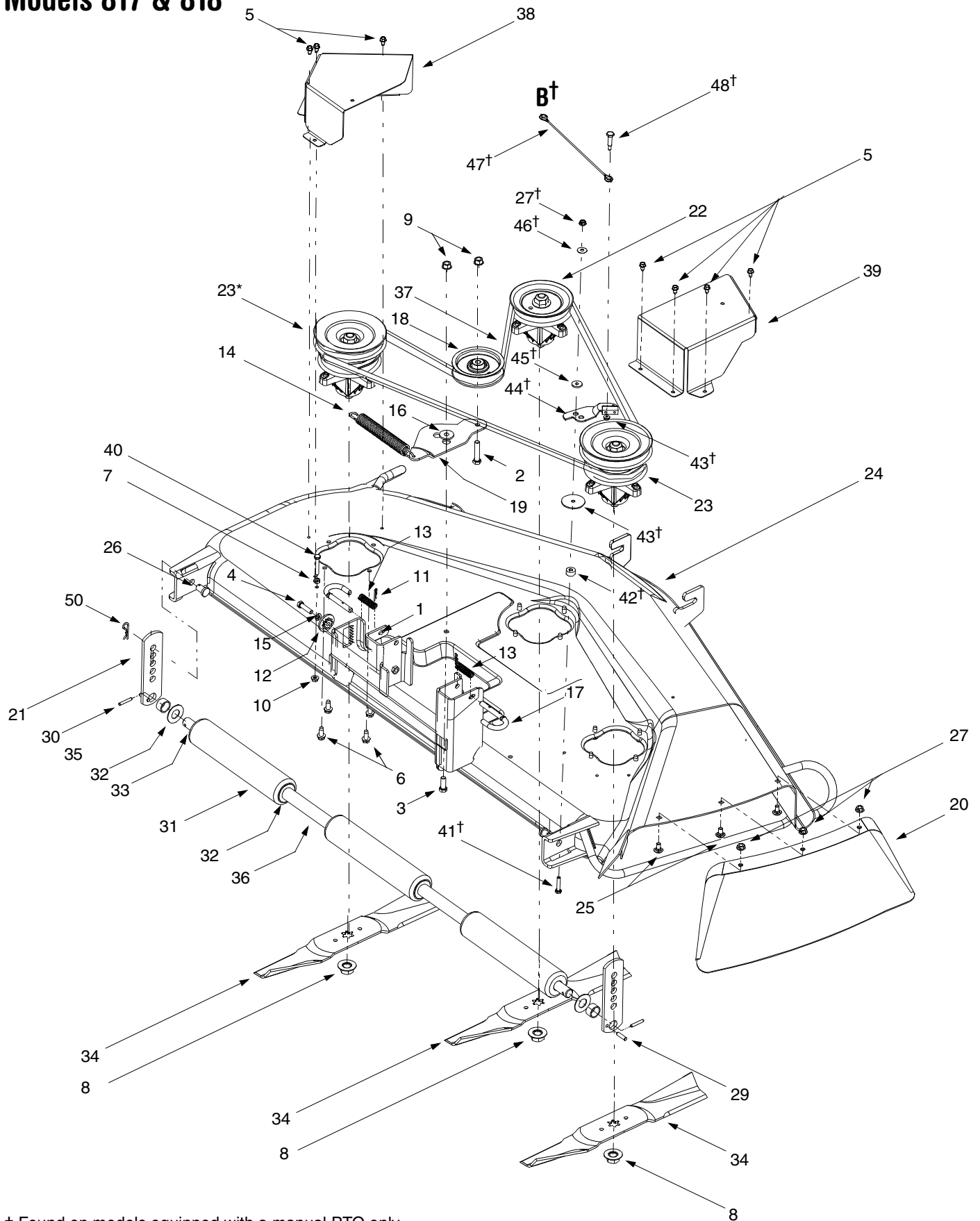
Models 817 & 818

REF. NO.	PART NO.	DESCRIPTION	REF. NO.	PART NO.	DESCRIPTION
1	16606	Retainer Hook	30	736-0105	Bell Washer, .401 x .87 x .063
2	17982	Spindle Reinforcement Plate	31	736-0119	Lock Washer, 5/16
3	618-0430A	Spindle Assembly, 5.0 Dia.	32	736-0270	Bell Washer, .265 x .75 x .062
	756-1187	Pulley Only	33	738-0347	Shoulder Spacer, .625 x 1.16
4	618-0595	Double Pulley Spindle Assembly	34	738-0373	Shoulder Screw
	756-1214	Double Pulley Only	35	742-0611	Three-in-one Blade, Star Center, 16.28"
5	683-0254	Deck Adjustment Bracket Assembly	36	742-0612	Three-in-one Blade, Star Center, 14.88"
6	683-0199C	46-inch Deck Shell	37	747-1116	Deck Release Pin
7	710-0167	Carriage Screw, 1/4-20 x .50	38	754-0349	Deck Belt, Poly
8	710-0344	Hex Cap Screw, 3/8-16 x 1.5	39	738-3056	Shoulder Screw, 1/2-2.5
9	710-0501	Hex Cap Screw, 1/4-20 x 2.0	40	756-0627B	Idler Pulley, 3.5
10	710-0514	Hex Cap Screw, 3/8-16 x 1.0	41	734-3058B	Deck Wheel, 5.0
11	710-0528	Hex Cap Screw, 5/8-18 x 1.25	42	783-0139A	Idler Bracket
12	710-0599	Self-tapping Screw, 1/4-20 x .5	43	783-0141	Center Deck Skirt
13	710-0650	Self-tapping Screw, 15/16-18 x .875	44	783-0142	RH Deck Skirt
14	710-0703	Hex Screw, 1/4-20 x .75	45	783-1348	LH Belt Cover
15	710-0751	Hex Cap Screw, 1/4-20 x .62	46	783-0805A	RH Belt Cover
16	710-1260A	Self-tapping Screw, 5/16-18 x .75	47	712-3006	Hex Nut, 1/4-20
17	712-0271	Hex Sems Nut, 1/4-20	48	712-3087	Wing Nut, 1/4-20
18	712-0417A	Hex Flange Nut, 5/8-18	49	712-3004A	Hex Nut, 5/16-18
19	712-0431	Flange Lock Nut, 3/8-16	50	746-1107	Bracket Cable, 12"
20	712-3006	Hex Nut, 1/4-20	51	750-0807	Spacer, .385 x .625 x .70
21	712-3027	Hex Flange Lock Nut, 1/4-20	52	710-0805	Hex Cap Screw, 5/16-18 x 1.5
22	714-0470	Cotter Pin, 1/8 x 1.25	53	17116	Deck Brake Assembly
23	717-1553A	Deck Adjustment Gear	54	732-0429A	Extension Spring, .5 x 3.97
24	726-0233	Push Nut, .25 x .5	55	748-0324	Shoulder Spacer
25	731-1032B	Side Discharge Chute Assembly	56	736-0416	Flat Washer, .320 x 3.0 x .125
26	732-0306	Compression Spring, .406 x .531 x 1.75	57	738-0572	Shoulder Screw, .374 x 1.16
27	732-0594A	Extension Spring, .91 x 7.3	58	736-0173	Flat Washer, .28 x .74 x .063
28	710-0578	Screw, 1/4-20 x 1.5	59	731-1636	Mulch Plug
29	734-0973	Deck Wheel, 5 x 1.38	60	711-0993	Belt Guard Pin

IMPORTANT: For a proper working machine, use Factory Approved Parts. **V-belts** are designed to engage and disengage safely. A substitute (non OEM) V-belt can be dangerous by not disengaging completely.

NOTE: Tractor features vary by model. NOT all parts listed above and pictured on the previous page are standard equipment.

Models 817 & 818



† Found on models equipped with a manual PTO only.

* A single-pulley spindle (618-0268A) is found in this location on models with a manual PTO.

Models 817 & 818

REF. NO.	PART NO.	DESCRIPTION	REF. NO.	PART NO.	DESCRIPTION
1	710-0167	Carriage Screw, 1/4-20 x .5	24	683-0196	50-inch Deck Shell
2	710-0347	Hex Cap Screw, 3/8-16 x 1.75	25	710-0260A	Carriage Bolt, 5/16-18 x .62
3	710-0514	Hex Cap Screw, 3/8-16 x 1.0	26	711-0332	Clevis Pin, .50 Dia. x .78
4	710-0528	Hex Cap Screw, 5/16-18 x 1.25	27	712-3004A	Hex Flange Lock Nut, 5/16-18 (Grade 5)
5	710-0599	Self Tapping Screw, 1/4-20 x .5	28	714-0145	Click Pin, .092 x 1.64
6	710-1260A	Self Tapping Screw, 5/16-18 x .75	29	715-0108	Spring Pin, 1/4 Dia. x 1
7	712-0291	Center Lock Nut, 1/4-20	30	715-0246	Spring Pin, 3/16 x 1.25
8	712-0417A	Hex Flange Nut, 5/8-18	31	731-0335	Deck Roller
9	712-0431	Flange Lock Nut, 3/8-16	32	736-0316	Flat Washer, .78 x 1.59 x .06
10	712-3027	Hex Flange Lock Nut, 1/4-20	33	738-0295	Deck Roller Shaft, .75 Dia. x 47.12
11	714-0104	Internal Cotter Pin, .072 x 1.12	34	742-0623	Blade, Star Center, 17.3
12	717-1553A	Deck Adjustment Gear	35	750-0212	Spacer, .752 x 1.0 x .53
13	732-0306	Compression Spring, .406 x .531 x 1.75	36	750-0288	Spacer, .82 x 1.0 x 5.75
14	732-0594A	Extension Spring, .91 x 7.33	37	754-0291A	Deck Belt
15	736-0119	Lock Washer, 5/16	38	783-0746	Belt Cover, L.H.
16	738-0347	Shoulder Spacer, .625 x .169	39	783-0793	Belt Cover, R.H.
17	747-1116	Deck Release Pin	40	710-3288	Hex Cap Screw, 1/4-20 x 1.62
18	756-0627B	Flat Idler Pulley, 3.5 OD	41	710-0805	Hex Cap Screw, 5/16-18 x 1.5
19	783-0139A	Idler Bracket	42	750-0214	Spacer, .34 x .87 x .44
20	12649	Chute Guard	43	736-0418A	Flat Washer, .34 x 2.5 x .10
21	12650	Height Adjustment Bracket	44	17116	Deck Brake Assembly
22	618-0268A	Center Spindle Assembly, 5 Dia.	45	748-0234	Shoulder Spacer
	756-1187	Pulley Only	46	736-0425	Bell Washer, .325 x .930 x .045
23	618-0269	Double Pulley Spindle Assembly	47	746-1107	Bracket Cable, 12"
	756-1041	Double Pulley Only	48	738-0572	Shoulder Screw, .374 x 1.16

IMPORTANT: For a proper working machine, use Factory Approved Parts. **V-belts** are designed to engage and disengage safely. A substitute (non OEM) V-belt can be dangerous by not disengaging completely.

NOTE: Tractor features vary by model. NOT all parts listed above and pictured on the previous page are standard equipment.