

PART NO. 17515

PRINTED IN U.S.A.
Price .35

PARTS LIST

190 Chain Saw

UT10578

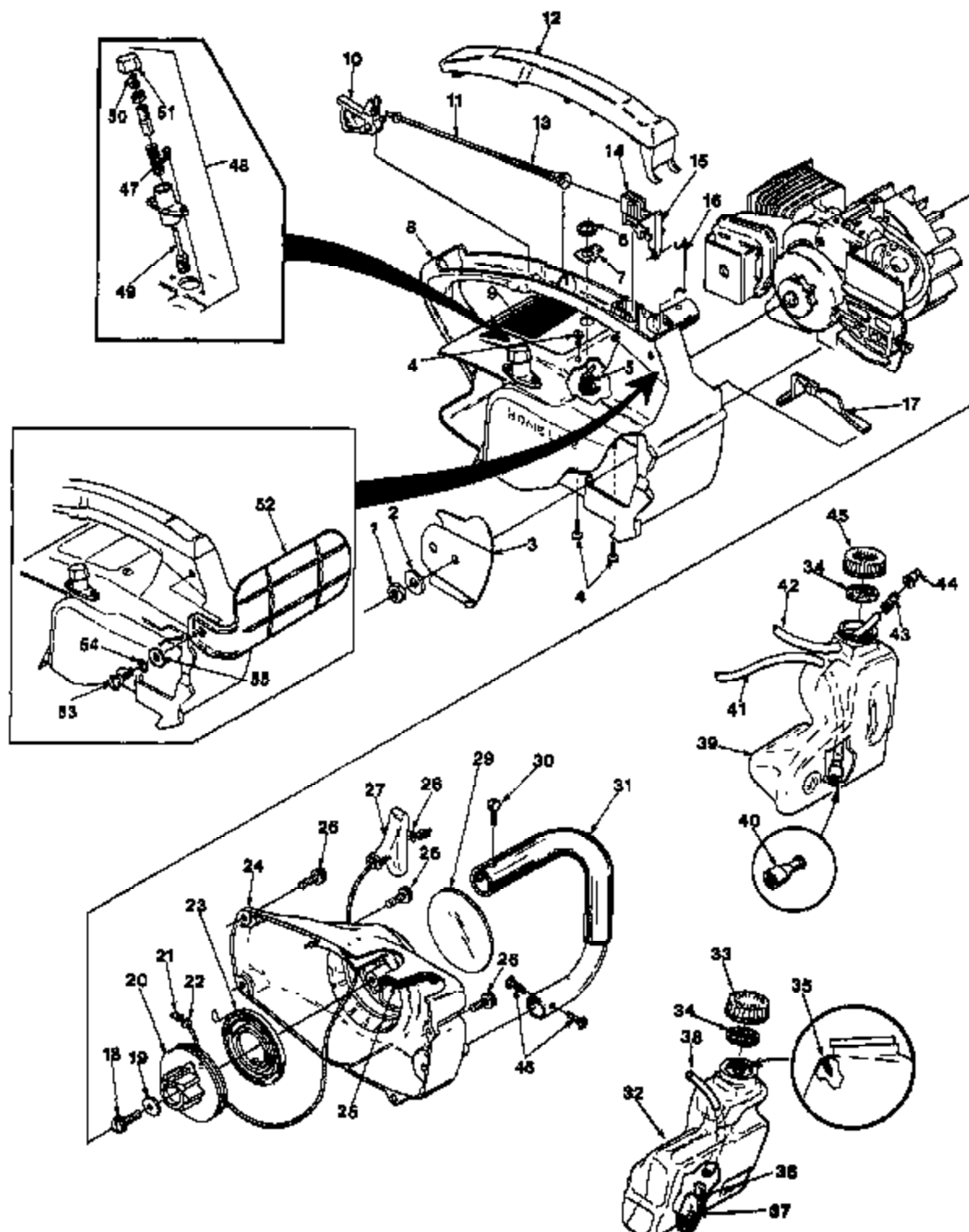
**with
AUTOMATIC
CHAIN OILER**



**Plus
SHARP-
MATIC™
Sharpening
Control**

HOMELITE TEXTRON

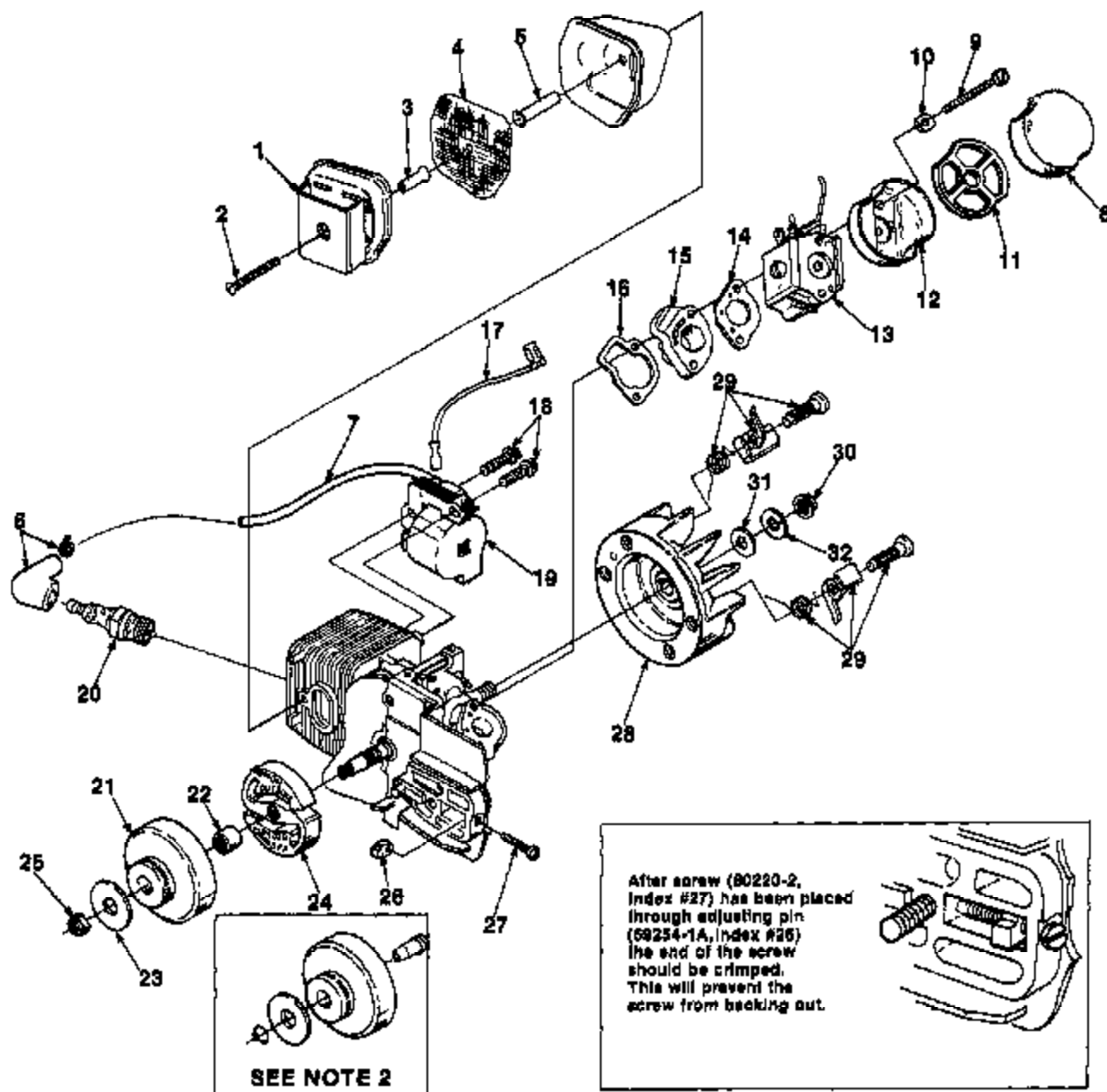
Homelite Division of Textron Inc.

190**FIGURE 1**

190

FIGURE 1

No.	Description	Part No.	Qty.	No.	Description	Part No.	Qty.
1	NUT- Guide bar, 5/16-18	81182	1	32	TANK- Fuel	A-70899	1
2	WASHER- Flat	84058	1		Includes:		
3	PLATE- Guide bar	89390-1	1	33	CAP- Tank fuel (red)	A-70894-A	1
4	SCREW- Pan hd., 10-24 x 1/2	82383	4		Includes:		
5	SWITCH- Stop (grounding)	A-89938	1	34	GASKET- Filler cap	94838-A	1
	Includes:			35	VALVE- Check (duck bill)	89451	1
6	NUT- Hex	72084-A1	1	36	FILTER- Fuel	A-89923	1
7	PLATE- "ON-OFF"	70894	1		Includes:		
8	HOUSING- Engine	A-95888	1	37	ELEMENT- Felt	84083	1
	Includes:			38	LINE- Fuel	70910-29	1
9	PLATE- Starting instructions	70835	1	39	TANK- Oil	A-70898	1
10	TRIGGER- Rear	69108-A	1		Includes:		
11	ROD- Throttle	A-89138	1	40	FILTER- Oil	A-88593	1
12	COVER- Handle	89140-A	1	41	LINE- Oil	70309-24	1
13	SPRING- Throttle rod	89248	1	42	LINE- Pressure	A-89356	1
14	TRIGGER- Front	89105	1		Includes:		
15	LEVER- Throttle	89107	1	43	CONNECTOR- Oil	89858-1A	1
16	ROD- Throttle (front)	89255-C	1	44	VALVE- Check (duck bill)	89451	1
17	COVER- Air filter	89263	1	45	CAP- Tank (oil) (black)	A-70893-A	1
18	SCREW- Hex washer hd., #10 x 3/4	70771	1		Includes:		
19	WASHER- Flat	94082	1		GASKET- Filler cap (See #34)	94838-A	1
20	PULLEY- Starter	89156	1	46	SCREW- Pan washer hd.	82348	2
21	ROPE- Starter #4, 34" long	A-93874	1	47	SCREW- Thread forming		
	Includes:				8-32 x .385	82827	2
22	WASHER- Nylon	83862	1	48	CHAIN SHARPENER (Complete)	A-85652	1
23	SPRING- Rewind	89217	1		Includes:		
24	HOUSING- Rewind starter	A-85830	1	49	STONE- Chain sharp	A-85708	1
25	FILTER- Fuel tank valve	89443	1		Includes:		
26	SCREW- Hex 10-32 x 5/8	89704	4	50	RING- Retaining	70925	1
27	GRIP- Starter rope	70211	1	51	KNOB- Adjusting	84806	1
28	WASHER- Flat	84025	1	52	HAND GUARD	A-70796-B	1
29	DECAL (190)	95857	1		Includes:		
30	SCREW- Pan washer hd., 10-32 x 5/8	82239	1	53	SCREW- 10-32 self tapping	96713	1
31	HANDLE BAR	A-84971	1	54	WASHER- Curved spring	95894	1
				55	WASHER- Flat	98102	1

190**FIGURE 2**

190

FIGURE 2

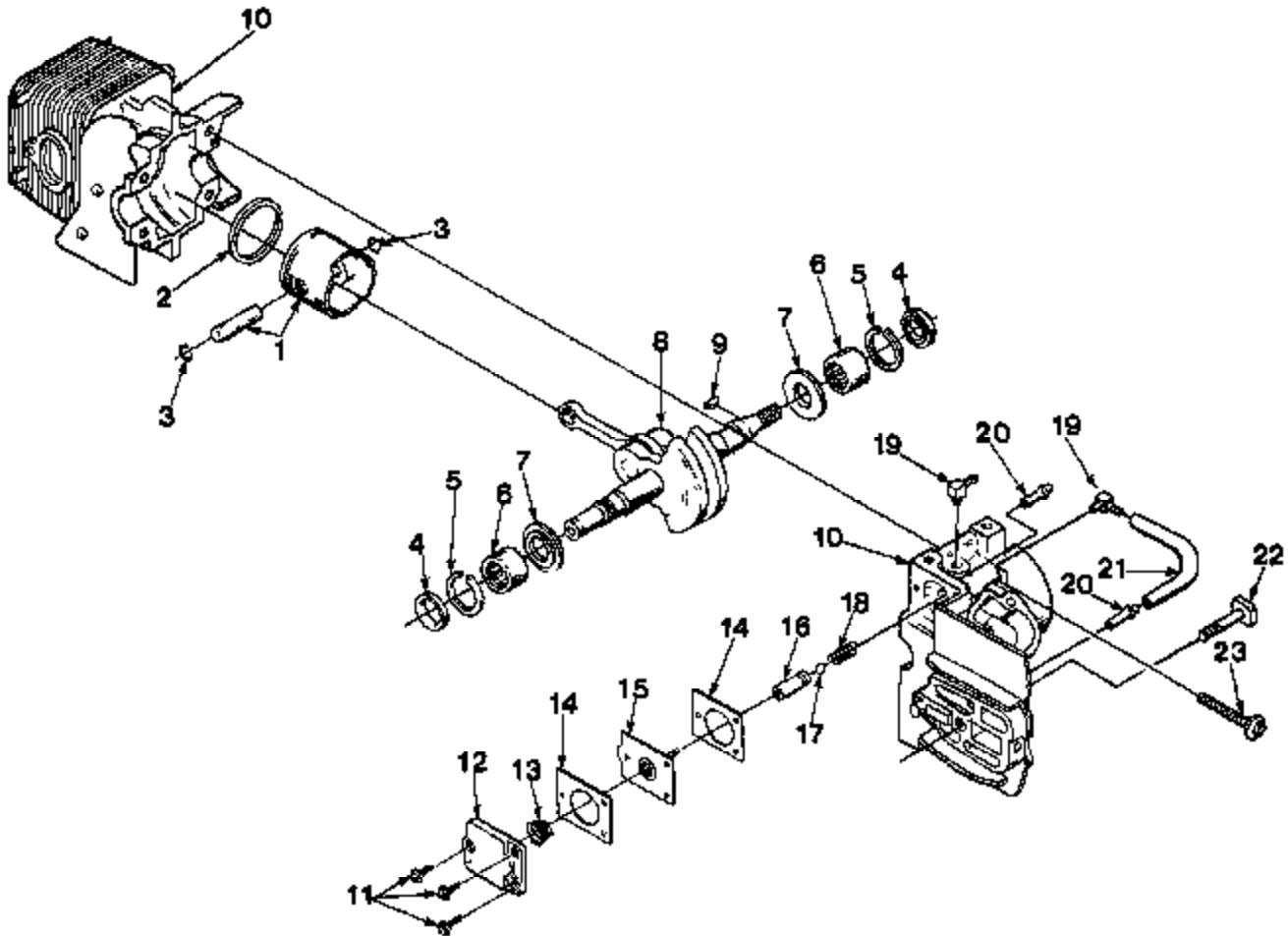
No.	Description	Part No.	Qty.
	MUFFLER (Complete)	A-84061-B	1
	Includes		
1	CAP- Muffler (w/shield)	A-85428	1
	SPARK ARRESTOR KIT	A-84139	1
	Includes		
2	SCREW	82320	1
3	SPACER	93989	1
4	SCREEN- Spark arrestor	93991	1
5	SPACER	93990	1
6	TERMINAL- Spark plug	A-33055	1
7	LEAD- High tension (Note 1)	89328	1
8	FILTER- Air	88141	1
9	SCREW- Hex hd 10-32 x 2 1/4	80481	2
10	WASHER- Lock, #10	83006-1	2
11	RETAINER- Air filter	89467	1
12	CLIP- Air filter	89148	1
13	CARBURETOR- HDC-67	A-84648	1
	CARBURETOR- HK-16C	A-70827-B	1
14	GASKET- Carburetor	86018	1
15	MANIFOLD- Intake	A-88373-A	1
16	GASKET- Intake manifold	88143	1
17	LEAD- Ground	A-84721	1
18	SCREW- Hex w/washer, 8-32 x 3/4	82248	2
19	MODULE- Ignition	94711	1
20	SPARK PLUG- Champion DJ-7J	88818-S	1
21	SPROCKET & DRUM W/Bearing	A-85343	1
	Includes		
22	BEARING- Needle	88612	1
23	WASHER- Thrust (clutch)	86289	2
24	CLUTCH- "S"	A-70351-A	1
25	NUT- Lock (See Note 2)	81112	1
26	PIN- Adjusting (See insert)	89264-1A	1
27	SCREW- Adjusting (Flt hd 8-32 x 1) (See insert)	80220-2	1
28	ROTOR & STARTER PAWL	A-84717-A	1
	Includes		
29	KIT- Starter pawl	A-70285-A	1
30	NUT- Hex 5/16-24	81117	1
31	WASHER- Flat	84085-1	1
32	WASHER- Lock	83002	1

NOTE -1 Cut wire to 6 1/2".

NOTE -2 If crankshaft is threaded on clutch end use 81112 nut.
Shafts with a groove requires 83972 retaining ring.

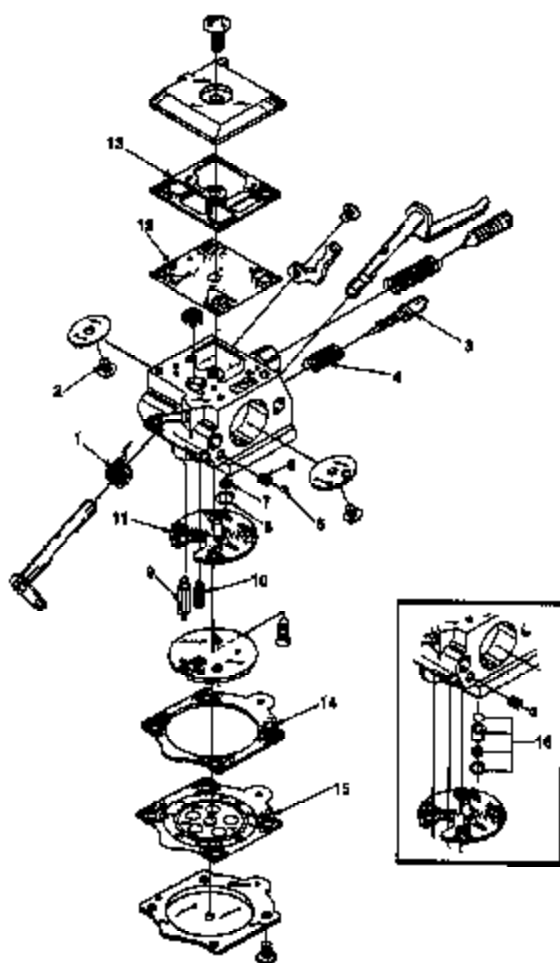
190

FIGURE 3

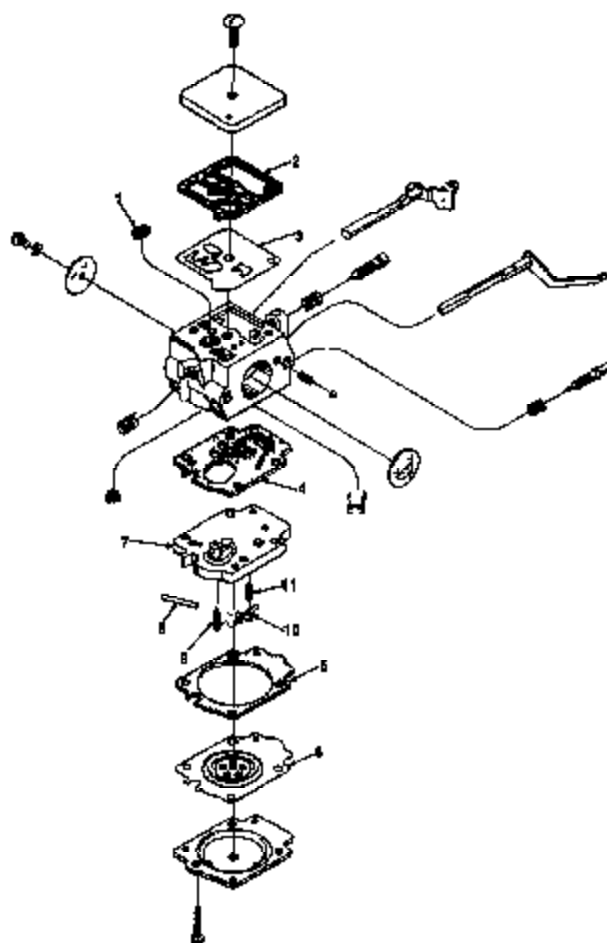


No.	Description	Part No.	Qty.
1	PISTON & PIN Includes	A-70224-A	1
2	PISTON RING	70205	1
3	RING- Piston pin retaining	65251	2
4	SEAL	94638	2
5	SPACER- Seal	89407	2
6	BEARING- Needle	12530	2
7	BEARING- Needle (Opt)	88513	2
8	WASHER- Thrust	89083-A	2
9	CRANKSHAFT Includes	A-98384	1
	NUT- (Not Shown)	81112	1
	KEY- Magneto	89250	1

No.	Description	Part No.	Qty.
10	CYLINDER & CRANKCASE Includes	A-86176	1
11	SCREW- Pan hd , 5-32 x 3/8	80571	3
12	COVER- Oil pump	89224-1C	1
13	SPRING- Oil pump	68447	1
14	GASKET- Oil pump	89244-1	2
15	PLUNGER- Oil pump	A-12366-B	1
16	BODY- Oil pump	89343-1	1
17	BALL- Check valve	80051	1
18	SPRING- Check valve	88570	1
19	FITTING- Oil line	70204	2
20	FITTING- Tube	89333	2
21	LINE- Oil	70181	1
22	BOLT- Guide bar 5/16-18	85026	1
23	SCREW- Sems hex hd , 5-32 x 1	88044	4

190**CARBURETOR
A-94649****HDC-57**

- 94058 REPAIR KIT (Includes #1-18)
 94701 GASKET/DIAPHRAGM KIT (Includes #11-18)
 93810 CHECK VALVE REPAIR KIT (#18)
 94057 CIRCUIT PLATE- High altitude .029 (Not Shown)

**CARBURETOR
A-70927-B****HK-16-C**

- 96897 REPAIR KIT (Includes #1-8)
 94817 MODULE #7 (Includes #8-11)

ACCESSORIES

LINE- Fuel (10 ft. length)	70310-99
LINE- Oil (10 ft. length)	70309-99
GREASE- Multi-use (8 oz.)	
(Sprocket bearing - PS Guide Bar)	17193
CARRYING CASE	94216
STARTING ROPE- 250 ft. reel #4	99948

TOOLS

SILASTIC- (Crankcase sealing)	24923
PLIERS- Tru-Arc (Sprocket retaining ring)	17196
PULLER- Magneto rotor	A-24747-A
Includes:	
BOLT- 5/16-18 x 1 3/4 (1)	80288
NUT- Hex 5/16-18 (2)	81198
WRENCH- Spanner (clutch)	A-93791
Includes:	
PIN- Clutch spanner (2)	23717-A
TOOL- Carburetor check valve installation	24972

A16583V

HOMELITE DIVISION OF TEXTRON INC.

P.O. Box 7047
14401 Carowinds Boulevard
Charlotte, N.C. 28217

HOMELITE **TEXTRON**

Homelite Division of Textron Inc.