

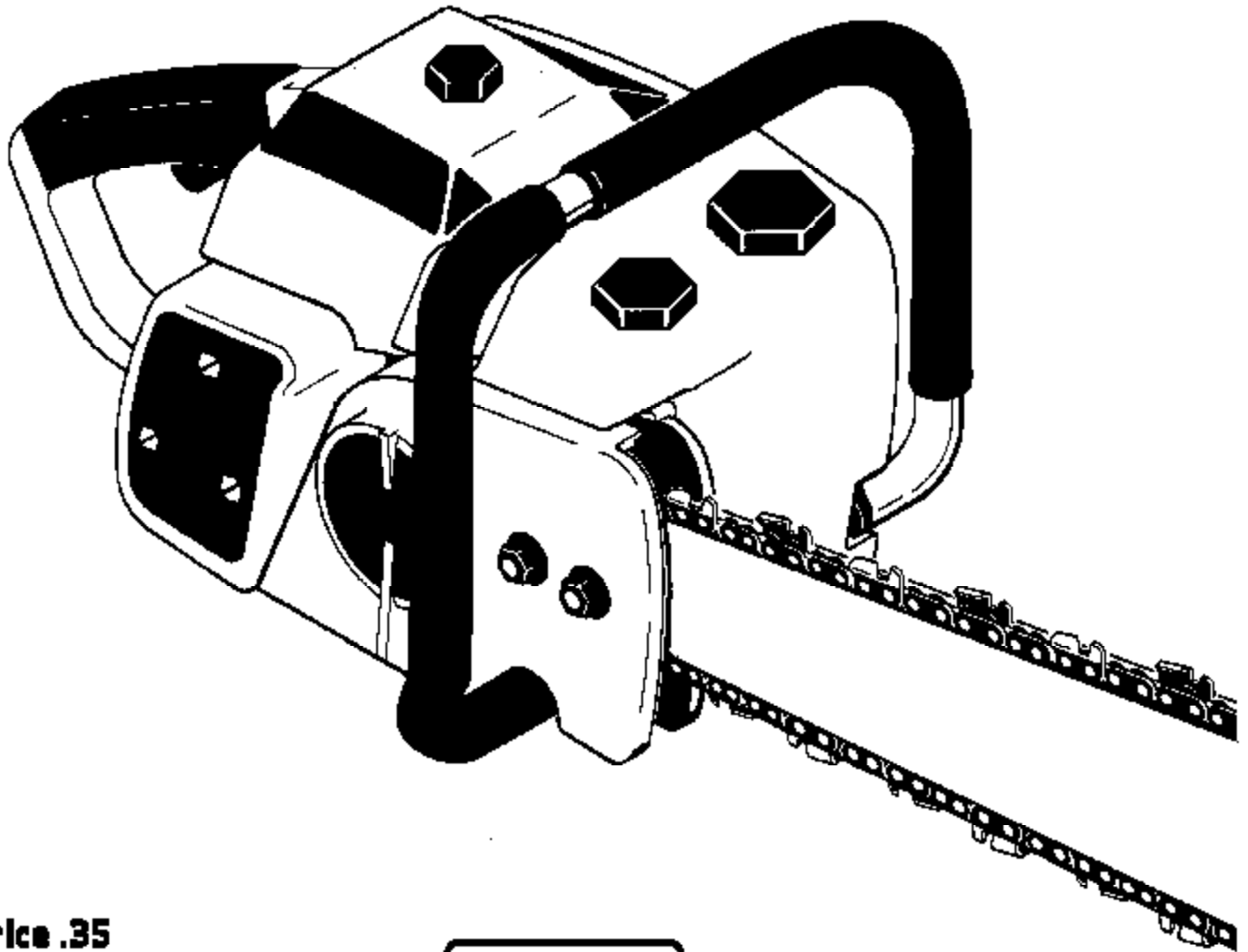


parts list

automatic chain saws

above s/n 50490307 only

UT10428



price .35

part no. 24836 rev 1

HOMELITE®

650 - 650E automatic saws

TOOLS

ANVIL-bearing removal (crankcase)	23846-1
ANVIL-bearing removal (crankcase & backplate)	23846-2
*CD TEST LAMP	24919
*COLLAR & PLUNGER	A-24876
GAUGE-feeler (.015/.016 thick) pink	22488
KEY-hex socket	22126
PLIERS-retaining ring	22828
*PLUG-bearing & seal installation & removal	24827-A
*PLUG-seal installation	24868
*PLUG-seal installation	24826-A
*PULLER-rotor removal	A-24861
*REAMER-valve seat	A-24884
SLEEVE-seal assembly (crankcase & backplate)	23759
SLEEVE-seal removal (crankcase)	23136-6
TOOL & PLUNGER-piston pin	A-24871
WRENCH-combination (650) only	A-24284
WRENCH-combination (650E) only	A-23937-B
WRENCH-socket (650) only	68651
WRENCH-spanner	A-23696-A

ACCESSORY

ROPE-starting #5, 250' reel	57084-1
-----------------------------	---------

PAINT

SPRAY CAN-black	22772
SPRAY CAN-red	23475

Refer to tool sheet #24908 for complete tool information

* Denotes new parts

650 - 650E automatic saws

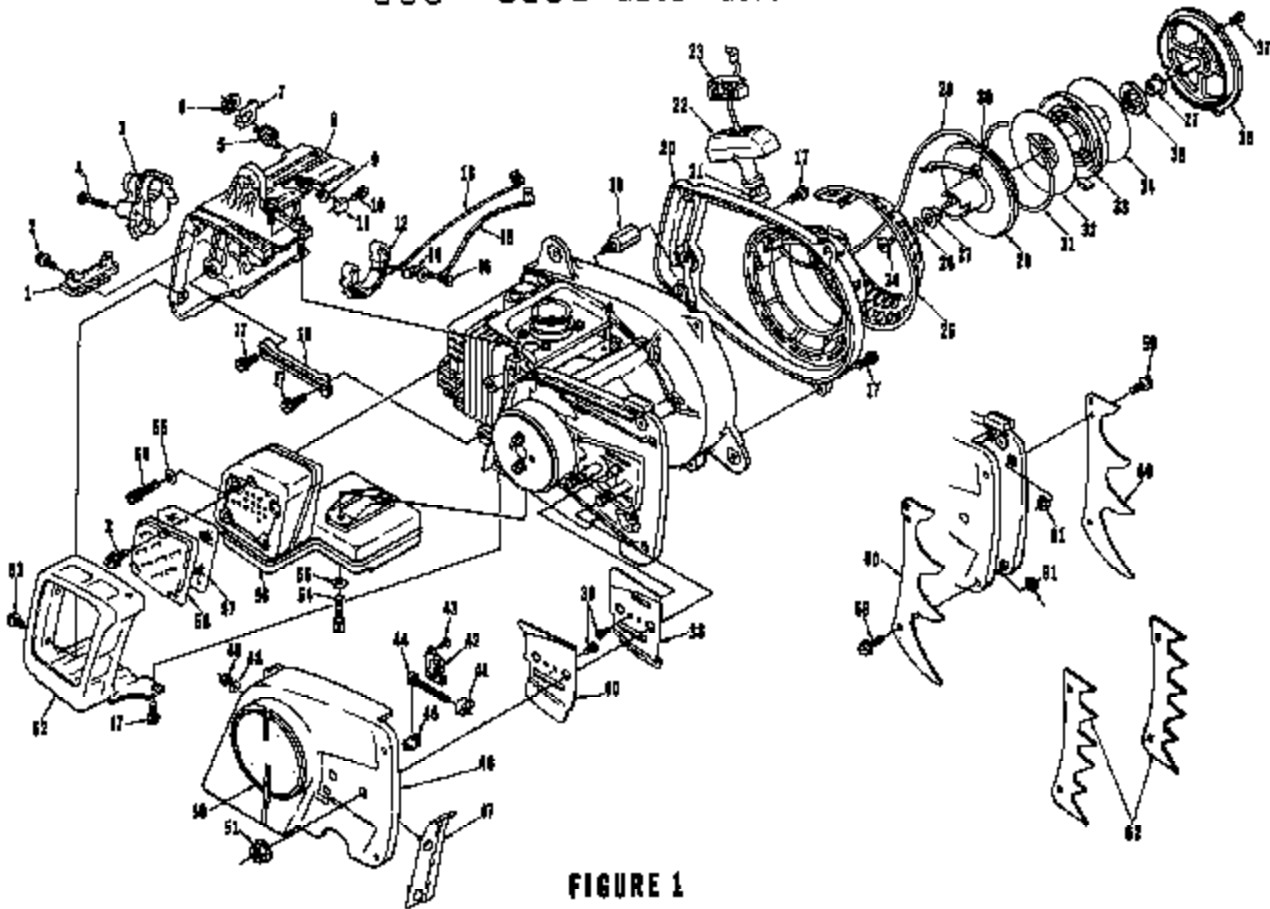


FIGURE 1

No.	Description	Part No.	Qty.	No.	Description	Part No.	Qty.
* 1	SNUBBER-rear	A-12803-A	1	*32	SHIELD-rewind spring (outer)	12636	1
2	SCREW-hex Sems, 8-32 x 3/8	88026	5	*33	SPRING-rewind	12634	1
* 3	TRANSFORMER	A-12298-A	1	*34	SHIELD-rewind spring (inner)	12635	1
* 4	Includes: SCREW	70068	2	*35	LOCK-rewind spring	12957	1
	GROMMET-shown on Fig. 3	12191	1	*36	COVER-starter	A-12614-2	1
5	SWITCH-grounding	A-57716	1	*37	SCREW-pan hd., 8-32 x 1/2	82254	3
6	Includes: NUT-hex	81204-A1	1	38	PLATE-guide bar (inner)	87160-A	1
7	PLATE-indicating (RUN-STOP)	12793-A	1	39	SCREW-truss hd., 6-32 x 3/8	80548	2
* 8	SHIELD-cylinder	12606-2A	1	*40	PLATE-guide bar (outer)	87161-A	1
9	NUT-hex, 10-24	81206	2	41	PIN-guide bar adjustment	87585-1A	1
10	SCREW-hex Sems, 10-24 x 3/4	88022	3	42	COVER-gear	12134	1
*11	RETAINER-nut	12672	2	43	SCREW-pan hd., 8-32 x 3/8	82251	2
*12	RECEPTACLE-transformer	12623-A	1	*44	SCREW-guide bar adjustment	A-12746	1
*13	LEAD-module	A-12719	1	*45	ADJUSTER-guide bar	A-12718	1
14	CONTACT-transformer	12766	2	*46	COVER-drivecase	A-70160	1
*15	LEAD-ground	A-12718	1	*47	Includes: GUARD-chain	A-70159	1
16	SCREW-pan hd. Plastic, #6 x 8/8	82215	2	Includes: WASHER-Bellville	12940	2	
17	SCREW-hex Sems, 10-24 x 5/8	88020	6	NUT-hex, 8-32	81609	2	
*18	BRACE-cylinder shield	12773	1	*50	DECAL-650	12827	2
*19	SPACER-w/stud	A-12835	1	*51	NUT-flange hex, 3/8-16	12850	2
*20	HOUSING-rewind starter	A-12812	1	*52	SHIELD-muffler	12958-2	1
21	Includes: BUSHING-starter rope	67177	1	53	SCREW-hex Sems, 10-24 x 1/2	88024	3
*22	GRIP-starter rope	A-69962-A	1	*54	SCREW-sock. hd., 10-24 x 3/4	82283	4
*23	Includes: INSERT-rope retaining	70018	1	*55	WASHER-Bellville	12940	4
24	SCREW-pan hd., 10-24 x 1/2	82210	1	*56	MUFFLER	A-12739-1A	1
25	SCREEN-starter housing	12925	1	*57	ARRESTOR-spark	12825	1
*26	WASHER-retaining	12782	1	*58	CAP-muffler exhaust	12824-1	1
*27	BUSHING-starter post	12639	2	59	SCREW-hex Sems, 10-24 x 1/2	88024	4
28	ROPE-starter (48" long)	88806	1	60	PLATE-bumper (650 only)	69276	2
*29	PULLEY-starter	A-70198	1	61	NUT-hex, 10-24	81206	4
*30	Includes: WASHER-rolled nylon	70165	1	*62	PLATE-bumper (650E only)	A-24889	1
*31	RING-retaining	12637	1	Includes: SCREW-hex Sems			
				10-24 x 1/2	88024	4	
				NUT-hex, 10-24	81208	4	

* Denotes new parts

ALWAYS FURNISH MODEL AND SERIAL NUMBER WHEN ORDERING PARTS.

650 - 650E automatic saws

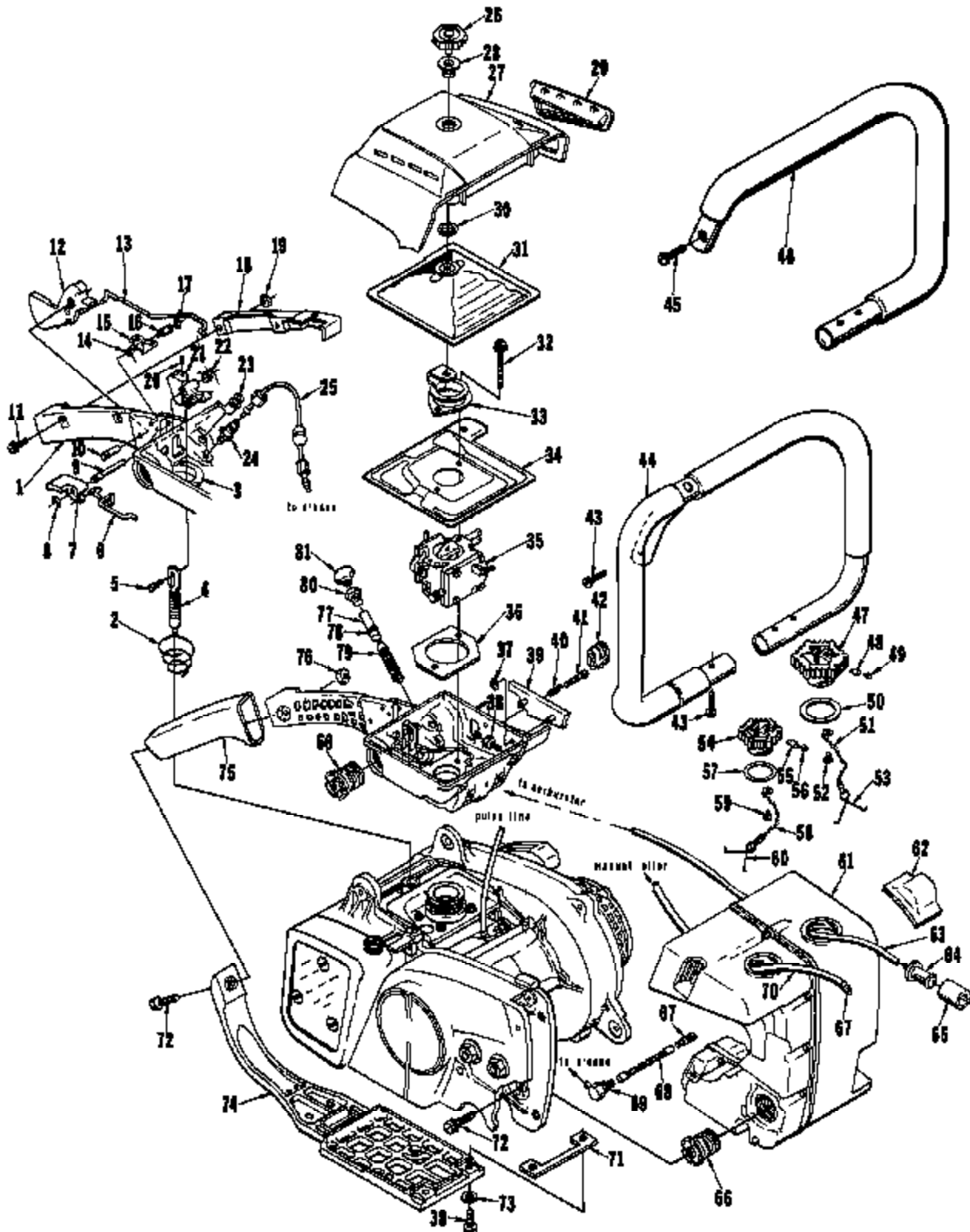


FIGURE 2

650 - 650E automatic saws

No.	Description	Part No.	Qty.	No.	Description	Part No.	Qty.
* 1	HANDLE-throttle	A-12810-A	1	*42	GRINDNET-carburetor needle	12891	1
* 2	Includes: SPRING-coil	12887	1	*43	SCREW-fil. hd., 10-24 x 7/8 (650)	82297	4
* 3	BOOT-sealing	12780-A	1	*44	HANDLE BAR-wrap around (650)	A-12714	1
* 4	VALVE-compression release	A-12712	1	*45	SCREW-fil. hd., 10-24 x 7/8 (650E)	82267	3
* 5	SCREW-shoulder	12861	1	*46	HANDLE BAR-flush cut (650E)	A-12888	1
* 6	ROD-choke	12643	1	47	CAP-fuel filler	A-65500	1
* 7	LEVER-choke	12820	1	48	Includes: VALVE-check (oval ductile)	69451	2
* 8	RING-retaining	69071	1	49	FILTER-filler cap	69454	1
* 9	PIN-pivot (compression arm)	12682	1	50	GASKET-fuel cap	69501	1
*10	PIN-trigger	12889	1	51	CHAIN-head	69502	1
*11	SCREW-pan hd., 8-32 x 3/8	82253	2	52	SCREW-pan Plastic, 6 x 1/4	82256	1
*12	TRIGGER-throttle	12619	1	53	RETAINER	69503	1
*13	ROD-throttle	12844-A	1	54	CAP-oil filler	A-12899	1
*14	SPRING-tension (compression cam)	12641	1	55	Includes: VALVE-check (oval ductile)	69451	1
*15	CAM-compression release	12621	1	56	FILTER-filter cap	69454	1
*16	PIN-pivot (compression cam)	12680	1	57	GASKET-oil cap	12726	1
*17	RING-retaining	12683	1	58	CHAIN-head	69502	1
*18	COVER-throttle handle	12818-2A	1	59	SCREW-pan Plastic, 6 x 1/4	82256	1
19	NUT-hex, 8-32	81223	2	60	RETAINER	69503	1
*20	SCREW-set, 10-32 x 3/8	12864	1	*61	TANK-fuel and oil	A-70070	1
*21	ARM-compression release valve	12844-1	1	*62	Includes: BUMPER-fuel tank	12863	1
*22	SPRING-tension (compression arm)	12686	1	*63	LINE-fuel	A-64053-A	1
*23	VALVE-check (inlet)	A-12887	1	64	PICK-UP-fuel	A-59251	1
24	VALVE-check (outlet)	A-86077	1	65	Includes: FILTER-felt	69253-1	1
*25	LINE-manual oil discharge	A-70079	1	*66	ISOLATOR-vibration	A-12708-B	4
*26	NUT-filter cover mounting	A-12112-1	1	67	FINDER-oil	A-63172	2
*27	COVER-air filter	A-12816-A	1	68	LINE-oil (flexible)	63605	1
28	Includes: BUSHING	12110	1	*69	ELBOW-90° oil tube	12661	1
*29	INTAKE-air (air filter cover)	12863	1	*70	LINE-oil	70084	1
30	NUT-push-on spring	12149	1	*71	SPACER-heat insulating	12979	1
*31	FILTER ELEMENT-air	A-12742-A	1	72	SCREW-hex Sems, 10-24 x 3/4	82028	6
*32	SCREW-hex Sems, 10-24 x 2	89028	2	*73	WASHER	12984	2
*33	TUBE-air intake	A-12704	1	*74	BRACE-throttle handle	12810-2A	1
*34	SHIELD-carburetor chamber	12888	1	*75	GRIP-throttle handle	70019	1
*35	CARBURETOR-WB-2	A-12717	2	76	NUT-hex, 10-24	87808	1
*36	SPACER-heat insulating	12991	1	77	PLUNGER-oil pump (manual)	A-68061-A	1
*37	NUT-push-on	12903	2	78	Includes: "O" RING	58106	1
38	SCREW-hex Sems, 10-24 x 5/8	82020	6	79	"O" RING	59074	1
*39	DEFLECTOR-air (carburetor chamber)	12894	1	80	NUT	65082	1
*40	SPRING-idle adjustment	12784	1	81	BUTTON	65084	1
*41	SCREW-idle adjustment	12782	1				

* Denotes new parts

650 - 650E automatic saws

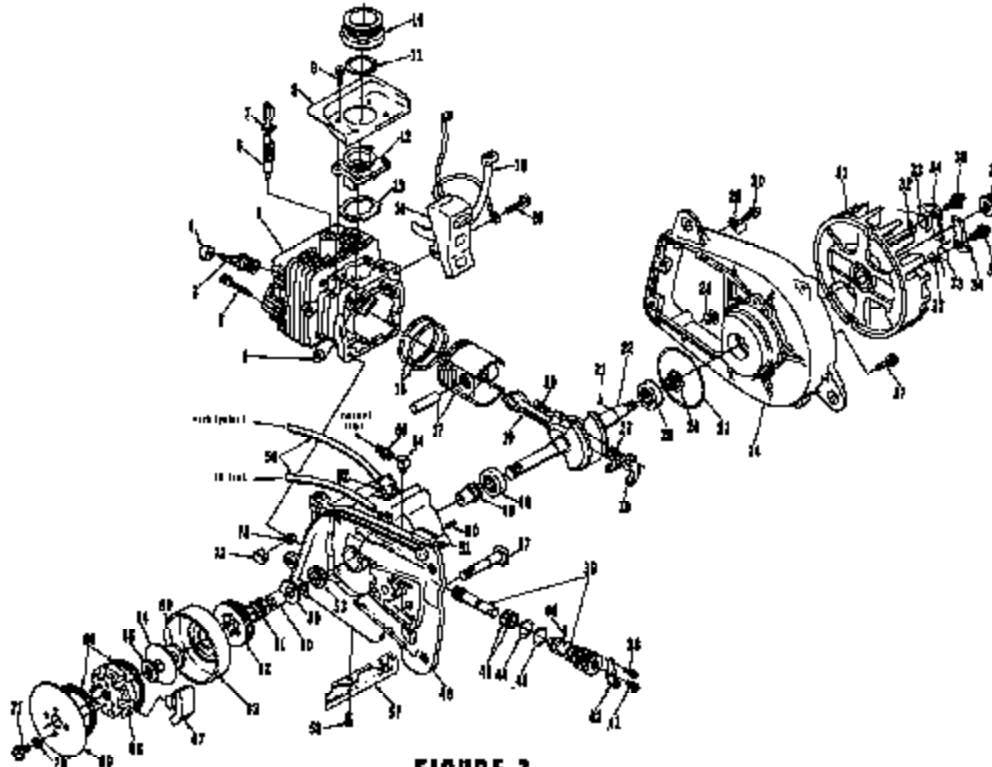
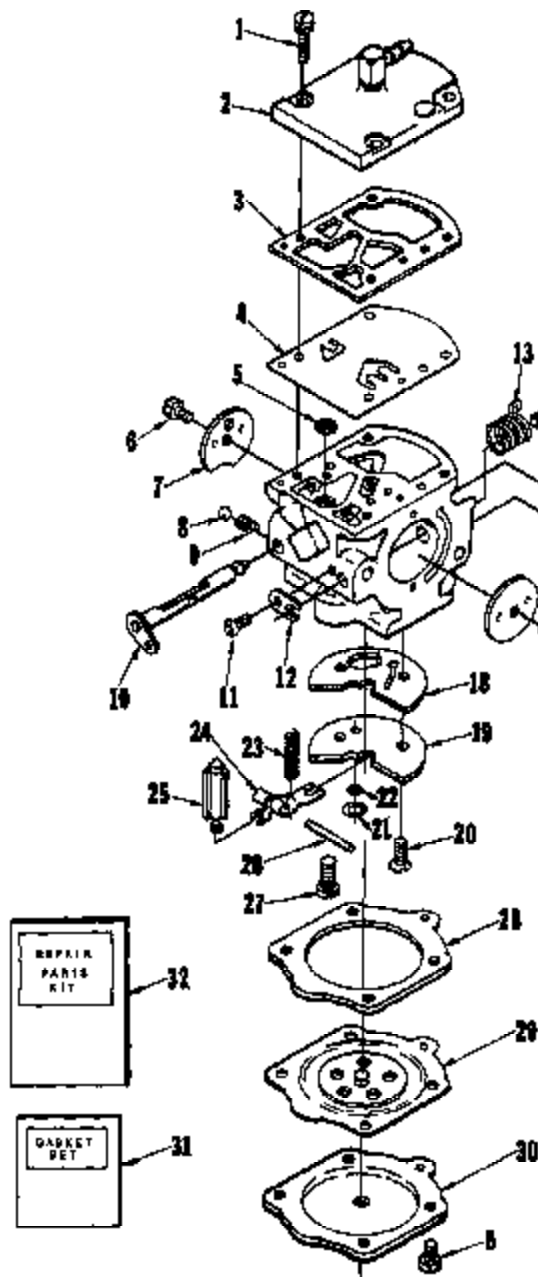


FIGURE 3

No.	Description	Part No.	Qty.	No.	Description	Part No.	Qty.
* 1	WASHER-rod end	12681	4	*39	PUMP-automatic oil	A-12723	1
* 2	SCREW-socket hd., 10-24 x 1	82246	4	*40	Includes: PIN-cam guide	12108	1
* 3	SPARK PLUG (UCJ-4G)	69718-B	1	41	SCREW-hex Sems, 8-32 x 3/8	88026	1
	SPARK PLUG ("J" gas type) accessory	69027-B	1	*42	BRACKET-oil pump retainer	12076	1
4	GROMMET-spark plug	12191	1	*43	"O" RING	12884	1
* 5	CYLINDER	A-12729-A	1	44	"O" RING	12096	1
* 6	Includes: VALVE-compression	A-12713	1	*45	"O" RING	12863	2
7	RING-retaining	75120	1	*46	CRANKCASE	A-12721-A	1
* 8	DEFLECTOR-air	12794	1	47	Includes: STUD-guide bar	68334	2
* 9	SCREW-hex Sems, 8-32 x 5/8	88029	4	48	BEARING-roller	83196	1
*10	CONNECTOR-carburetor	12623	1	49	GEAR-worm	12071	1
*11	SPRING-garter	12869	1	50	PIN-dowel	71430	1
*12	MANIFOLD-intake	12622	1	*51	BUMPER-crankcase	12755	1
*13	GASKET-intake manifold	12646	1	52	FITTING-tube	68333	1
14	MODULE & CORE	12669	1	*53	SEAL-main	12306	1
15	TIE-cable (module leads)	12298	1	54	CONNECTOR-elbow 90°	31724	1
16	SCREW-hex Sems, 8-32 x 1-1/4	82184	2	55	FITTING-straight	68393	1
*17	PISTON & PIN	A-12811	1	*56	LINE-flexible	12683-A	1
*18	Includes: PISTON RING	12668	2	*57	SHIELD-heat	12777	2
*19	ROD-connecting	A-70039	1	58	SCREW-pan hd., 8-32 x 3/8	82253	2
20	Includes: SCREW-sec. hd., 10-32 x 5/8	60845	2	*59	WASHER-thrust	12888	2
21	KEY-woodruff	75079	1	*60	RACE-inner (650)	12862	1
*22	CRANKSHAFT	70023	1	61	BEARING-needle (unit cage) 650	64124	1
*23	ROLLERS-needle (set of 12)	A-70062	1	62	SPROCKET-rim (8 tooth, .404 pitch) 650	63285	1
*24	PLATE-back	A-12726	1	63	HUB & DRUM-? spline (650)	A-68727	1
25	Includes: BEARING-roller	63186	1	*64	RACE-inner (650E)	12666	1
26	SEAL	12282-A	1	65	BEARING-needle (unit cage) 650E	65393	1
27	"O" RING	67559	1	66	SPROCKET-rim (8 tooth, .404 pitch) 650E	66960	1
*28	RETAINER-lead	12889	1	68	HUB & DRUM-8 spline (650E)	A-66961	1
*29	CLIP-wire (switch lead retainer)	12896	1	*	†SPROCKET & DRUM-spur (ST, 3/8 pitch) A-12819		1
30	SCREW-hex Sems, 10-24 x 3/4	89022	1	*54	WASHER-thrust	12907	1
*31	ROTOR-magneto	12640	1	*55	WASHER-thrust	12867	1
32	WASHER-lock	89086	2	56	SPRING-ajutab	67441	2
33	SPRING-starter pawl	65275	2	*57	SHOE-clutch	68817-1	6
34	PAWL-starter	65768	2	*58	SPIDER-clutch	65723-3	1
35	STUD-starter pawl	63877-B	2	*59	COVER-ajutab	A-24921	1
*36	NUT-hex flange	81236	1	*70	Includes: WASHER-Bellville	12940	2
37	SCREW-hex Sems, 10-24 x 5/8	88020	6	71	SCREW-hex hd., 10-24 x 1/2	80361-I	2
38	SCREW-hex Sems, 8-32 x 3/8	88026	1	*72	RETAINER-nut	12889	6
				73	NUT-hex, 10-24	61208	4

* Denotes new parts † Denotes accessory

650 - 650E automatic saws



A-12717 WB-2

No.	Description	Part No.	Qty.
1	SCREW-pump cover	64894	4
* 2	COVER-fuel pump	12829	1
* 3	GASKET-pump	†12836	1
* 4	DIAPHRAGM-pump	†12839	1
5	SCREEN-inlet	64243	1
6	SCREW	64589	6
* 7	VALVE-choke	12833	1
* 8	BALL-choke friction	†12834	1
* 9	SPRING-choke friction	†12841	1
*10	SHAFT-choke	12832	1
11	SCREW-clip	†64893	1
*12	CLIP-throttle shaft	†12860	1
*13	SPRING-throttle return	†12842	1
*14	SHAFT-throttle	12830	1
*15	NEEDLE-adjustment	†12848	2
16	SPRING-needle adjustment	†64236	2
*17	VALVE-throttle	12831	1
*18	GASKET-circuit	†12835	1
*19	PLATE-circuit	12846	1
*20	SCREW-circuit plate	70062	2
21	RING-screen retaining	67860	1
22	SCREEN-check valve	67861	1
*23	SPRING-metering lever	†70081	1
24	LEVER-metering	64245	1
25	VALVE-inlet needle	†64229	1
26	PIN-metering lever	†64244	1
27	SCREW-metering lever pin	†64928	1
28	GASKET-metering diaphragm	†64231	1
29	DIAPHRAGM-metering	†64235	1
30	COVER-metering diaphragm	64234	1
*31	GASKET-set	†12837	1
*32	REPAIR KIT	12846-A	1

* Denotes new parts

† Indicates contents of Repair Kit 12846-A

‡ Indicates contents of Gasket Set 12837

650 - 650E automatic saws

Part No.	Description	Qty.	Part No.	Description	Qty.	Part No.	Description	Qty.	Part No.	Description	Qty.
12071	Gear-worm	1	*12130-1A	Muffler	1	22486	Gauge-feeler	3	*A-68063-A	Lane-fuel	1
*12076	Bracket-oil pump	1	*A-12742-A	Filter Element	1	22772	Paint-black	1	68061-A	Plunger-oil pump	1
12086	"O" Ring	1	*A-12746	Screw-guide bar	1	22828	Pliers-retaining	2	68383	Fitting-straight	1
*12108	Pin-dam guide	1	*12756	Bumper	1	23128-8	Sleeve-seal	1	68661	Wrench-socket	1
12110	Bushing	1	*12773	Brace-cylinder	1	23475	Paint-red	1	*68713-8	Spark Plug	1
*A-12112-1	Nut-filter cover	1	*12777	Shield-heat	1	A-23636-A	Wrench-spanner	1	A-68727	Hub & Drum	1
12126	Gasket-oil cap	1	*12769	Screw-idle	1	23769	Sleeve-seal assy.	1	69027-B	Spark Plug-"J"	1
12134	Cover-gear	1	*12784	Spring-idle	1	23848-1	Anvil-bearing	1	*69071	Ring-retainer	1
12140	Nut-push-op	1	12788	Contact-trans.	2	23848-2	Anvil-bearing	1	69276	Plate-bumper	2
13191	Grommet	2	*12789	Washer-retaining	1	A-23937-B	Wrench	1	69461	Valve-check	2
A-12222	Cap-oil filler	1	12792-A	Plate-indicating	1	A-24284	Wrench	1	69464	Filter-filler cap	2
12232-A	Seal	1	*12794	Deflector-air	1	*24284-A	Plug-seal	1	A-69600	Cap-fuel filler	1
12238	Tie-cable	1	*12799-A	Boot-washing	1	*24287-A	Plug-bearing	1	69701	Gasket-fuel cap	1
*A-12299-A	Transformer	1	*A-12803-A	Snubber-rear	1	*A-24651	Puller-rotor	1	69702	Chain-bead	2
*12306	Seal-main	1	*A-12811	Piston & Pin	1	A-24871	Tool & Plunger	1	69703	Retainer	2
*12606-1	Crankshaft	1	*A-12812	Housing-rewind	1	*A-24876	Collar & Plunger	1	*69817-1	Shoe-clutch	6
*12806-2A	Shield-cylinder	1	*A-12813-A	Handle-throttle	1	*A-24884	Reamer-valve	1	69833	Fitting-tube	1
*12810-2A	Brace-throttle	1	*A-12816-A	Cover-air filter	1	*A-24888	Plate-bumper	1	*A-69952-A	Grip-starter rope	1
*A-12814-2	Cover-starter	1	*A-12819	Sprocket & Drum	1	*24910	CD Test Lamp	1	*70016	Insert-rope	1
*12816-2A	Cover-throttle	1	*12824-1	Cap-muffler	1	*A-24921	Cover-clutch	1	*70018	Grip-throttle	1
*12616	Trigger-throttle	1	*12825	Arrestor-spark	1	*24966	Plug-seal	1	*A-70022	Rod-connecting	1
*12620	Lever-choke	1	*12827	Decal-650	2	81734	Connector	1	*70023	Crankshaft	1
*12621	Cam	1	*12828	Cover-fuel pump	1	67084-1	Reel-45	1	*A-70052	Roller-needle	1
*12622	Manifold-intake	1	*12830	Shaft-throttle	1	A-57710	Switch-grounding	1	70068	Screw	2
*12623	Connector	1	*12831	Valve-throttle	1	68334	Stud-guide bar	2	*A-70070	Tank-fuel & oil	1
12628	Screen-starter	1	*12832	Shaft-choke	1	68406	"O" Ring	1	*A-70079	Lane-manual oil	1
*12629-A	Receptacle	1	*12833	Valve-choke	1	68756	Paul-starter	2	*70061	Spring-metering	1
*12631	Washer-conical	4	*12834	Ball-choke	1	68806	Rope-starter	1	*70082	Screw-circuit	2
*12634	Spring-rewind	1	*12835	Gasket-circuit	1	68074	"O" Ring	1	*70084	Lane-oil	1
*12635	Shield-rewind	1	*12836	Gasket-pump	1	A-39261	Pick-Up-fuel	1	*A-70158	Guard-chain	1
*12636	Shield-rewind	1	*12837	Gasket-set	1	68266-1	Filter-foit	1	*A-70160	Cover-drivecase	1
*12637	Ring-retaining	1	*12839	Diaphragm	1	63193	Bearing-roller	2	*70165	Washer-rolled	1
*12639	Bushing-starter	2	*12841	Spring-choke	1	63286	Sprocket-rim	1	*A-70188	Pulley-starter	1
*12640	Rotor-magneto	1	*12842	Spring-throttle	1	63603	Sprocket-rim	1	71430	Pin-dowel	1
*12642-A	Rod-throttle	1	*12843	Needle	2	63677-B	Stud-starter	2	72084-A1	Nut-hex	1
*12643	Rod-choke	1	*12846	Plate-circuit	1	64124	Bearing-needle	1	75078	Key-woodruff	1
*12644-1	Arm-compression	1	*12846-A	Repair Kit	1	64224	Cover-metering	1	78120	Ring-retaining	1
*12646	Gasket-intake	1	*12853	"O" Ring	2	64228	Valve-inlet	1	FASTENING PARTS		
*12656	Spring-tension	1	*12854	"O" Ring	1	64231	Gasket-metering	1	*12860	Nut-3/8-16	2
*12659	Piston Ring	2	*12858	Spring-garter	1	64235	Diaphragm	1	*12864	10-32 x 3/8	1
*12661	Elbow-oil line	1	*12859	Retainer-lead	1	64236	Spring-needle	2	80346	10-32 x 3/8	2
*12666	Race-inner	1	*12861	Screw-shoulder	1	64243	Screen-inlet	1	80361-1	10-32 x 1/2	2
*12667	Washer-thrust	1	*12863	Bumper-fuel tank	1	64244	Pin-metering	1	80648	6-32 x 3/8	2
*12668	Washer-thrust	2	*12867	Spring-conical	1	64245	Lever-metering	1	81009	Nut-8-32	2
12669	Module & Core	1	*12880	Clip-throttle	1	64688	Screw-metering	1	81208	Nut-10-24	15
*12672	Retainer-nut	2	*12882	Race-inner	1	64689	Screw	6	81223	Nut-8-32	2
*12680	Pin-pivot	1	*12883	Shield-carburetor	1	64693	Screw-clip	1	*81236	Nut	1
*12681	Spring-tension	1	*12691	Grommet	1	64694	Screw-pump	4	82194	6-32 x 1-1/4	2
*12682	Pin-pivot	1	*12693	Intake-air	1	A-65077	Valve-check	1	82215	Screw	2
*12683	Ring-retaining	1	*12894	Deflector-air	1	65082	Nut	1	92216	10-24 x 1/2	1
*12689	Retainer-nut	4	*12896	Clip-wire	1	65084	Button	1	*82246	10-24 x 1	4
*12693-A	Lide-flexible	2	*A-12898	Handle Bar	1	A-65172	Finder-oil	2	82261	6-32 x 3/8	2
*A-12704	Tube-air intake	1	*12903	Nut-push on	2	65376	Spring-starter	2	*82253	6-32 x 3/8	4
*A-12708-B	Isolator	4	*12907	Washer-thrust	1	65399	Bearing-needle	1	*82254	6-32 x 1/2	2
*12712	Valve	1	*A-12936	Spacer	1	*65723-8	Spider-clutch	1	82266	8 x 1/4	2
*A-12714	Handle Bar	1	*12940	Washer	8	65860	Sprocket-rim	1	*82267	10-24 x 7/8	7
*A-12716	Adjuster-bar	1	*12957	Lock-rewind	1	A-65891	Hub & Drum	1	*82283	10-24 x 3/4	4
*A-12717	Carburetor	1	*12963-2	Shield-muffler	1	67160-A	Plate-guide bar	1	68056	Washer-lock	2
*A-12718	Lead-ground	1	*12976	Spacer-heat	1	*67161-A	Plate-guide bar	1	68010	10-24 x 5/8	10
*A-12719	Lead-module	1	*12983	Pin-trigger	1	67177	Bushing-starter	1	69022	10-24 x 3/4	2
*A-12721-A	Crankcase	1	*12984	Washer	2	67390	Ring-screen	1	88024	10-24 x 1/2	11
*A-12723	Pump-automatic	1	*A-12987	Valve-check	1	67381	Screen-check	1	88028	6-32 x 3/8	7
*A-12725	Backplate	1	*12991	Spacer-heat	1	67441	Spring-clutch	2	*88028	10-24 x 2	2
*A-12726-A	Cylinder	1	22126	Key-hex socket	1	67659	"O" Ring	1	*88029	6-32 x 5/8	4

* Denotes new parts



PORT CHESTER, NEW YORK, U.S.A. 10673

E2573RY