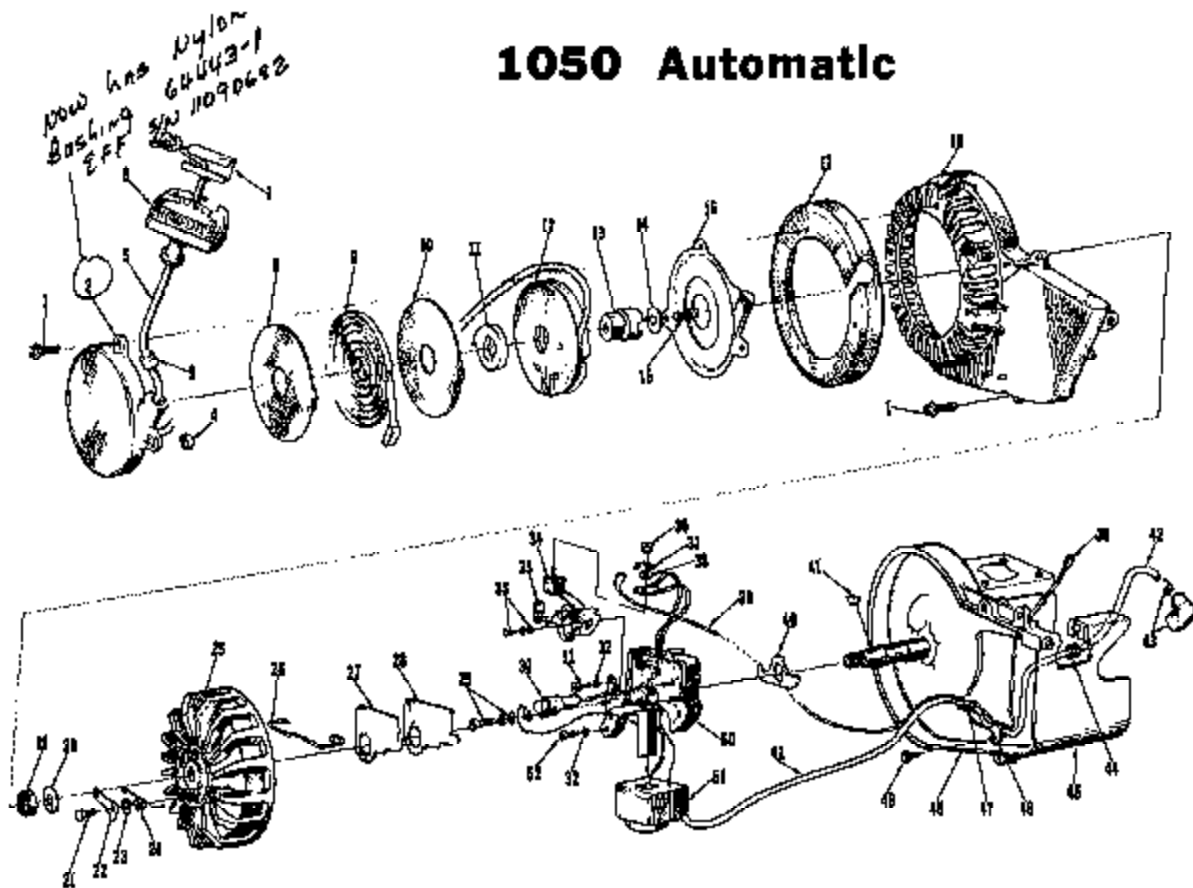


Homelite

1050 AUTO

PART NUMBER 24418

1050 Automatic



① Ser. Mono 796 CS

FIGURE 1

No.	Description	Part No.	Qty.	No.	Description	Part No.	Qty.
1	SCREW-hex, 12-24 x 3/4	80887	7	27	COVER-dust	55978	1
② 2	COVER-starter	A-64178-3A	1	28	GASKET-dust cover	55978-2	1
3	Includes: BUSHING-rope	67177	1	29	SCREW GROUP-condenser	57750	1
4	BUSHING-rewind	55830	1	30	CONDENSER-w/terminal	55987	1
5	ROPE-starter	58806	1	31	SCREW-til, 10-24 x 1/2	80595	1
6	GRIP-rope	55997	1	32	WASHER-lock, #10	93046	3
7	INSERT-rope retaining	58517	1	33	SCREW GROUP-point	57748	1
8	SHIELD-spring (inner) (optional)	65711	1	34	POINT SET	A-53165	1
9	SPRING-rewind	64180-A	1	35	Includes: WICK	55984	1
10	SHIELD-spring(outer) (optional)	65712	1	36	NUT-terminal	55982	1
11	LOCK-spring rewind	64049-A	1	37	TAB-ground	57733	1
12	PULLEY-starter	84080-1	1	38	WASHER-terminal	55983	1
13	CUP-starter	87139	1	39	LEAD-ground w/terminals	A-58321	1
14	WASHER-retaining	68763	1	40	SEAL-breaker box	58282-A	1
15	SCREW-hex, 10-32 x 1/2	80848	1	41	KEY-rotor	75076	1
16	SHIELD-sawdust	64052	1	42	LEAD-high tension	58382	1
17	SCREEN-fan housing	85880-1	1	43	TERMINAL-spark plug	A-55373-A	1
18	HOUSING-fan	58094-1	1	44	GROMMET	60929	1
19	NUT-lock, 7/16-20	81104	1	45	SHIELD-cylinder	A-63736-1	1
20	WASHER-flat	84047	1	46	CLAMP-lead	56014	1
21	STUD-shoulder	64986	2	47	BLEVE	55290	1
22	PAWL-starter	58766	2	48	CRANKCASE-(see Fig. 2)	A-63072-A1	1
23	WASHER	58851	2	49	SCREW-hex, 10-32 x 3/8	80869-1	3
24	SPRING-starter pawl	58754-1	2	50	BOX-breaker w/core	57744	1
25	ROTOR	64053-A	1	51	COIL-w/ground terminal	55886-A	1
26	CLAMP-dust cover	55980	1	52	SCREW-til, 10-24 x 7/8	80660	1

1050 Automatic

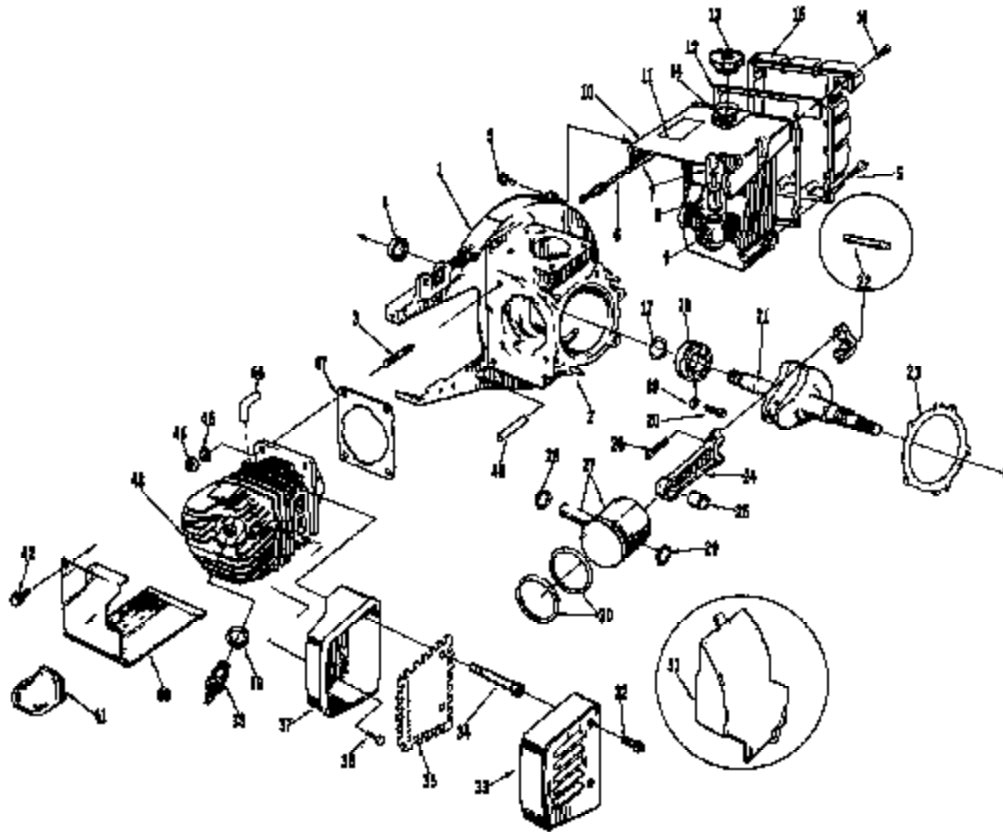


FIGURE 2

No.	Description	Part No.	Qty.	No.	Description	Part No.	Qty.
1	CRANKCASE-w/pine	A-83072-A1	1	27	PISTON & PIN	A-83071-D	1
2	Includes: PIN-dowel	74382	2	28	Includes: RING-retaining	58290	1
3	STUD	58871	4	29	RING-piston pin retaining	64743	1
4	SEAL	58206-A	1	30	PISTON RING	58291	2
5	SCREW-hex, 12-24 x 3/4	80867	4	31	EXCHANGER-heat (optional)	63193-1	1
6	PITTING-fuel outlet	58394	1	32	SCREW-hex, 12-24 x 3/8	80837	2
7	LINE-flexible	56806	1	33	CAP-muffer	A-59983	1
8	FILTER ASSEMBLY	A-59231	1	34	STUD-muffer	†59982-A	2
9	Includes: FILTER-felt	59230-1	1	35	BAFFLE-muffer	59978-A	1
10	TANK-fuel	58172-4	1	36	SCREW-hex, 1/4-20 x 5/8	†80408	1
11	DECAL	84144	1	37	BODY-muffer	A-59987-B	1
12	GASKET-fuel tank cover	58307	1	38	SPARK PLUG	83647-E	1
13	CAP-fuel filler	A-84140-1	1	39	Includes: GASKET	85038	1
14	Includes: GASKET	83358	1	40	SHIELD-cylinder	A-62736-1	1
15	COVER-tank	59920-2	1	41	CAP-spark plug	83735	1
16	SCREW-rd., 6 x 1/2	80613	16	42	SCREW-hex, 10-24 x 3/8	90889-1	2
17	RING-retaining	58319-A	1	43	CYLINDER-2 3/16 bore	A-63861	1
18	BEARING-ball	59190-8	1	44	NUT-hex, 1/4-28	81065-2	4
19	WASHER-lock	83001	2	45	WASHER-lock, 1/4	89008	4
20	SCREW-bearing retaining	19233-3	2	46	LINE-fuel (idle)	89658	1
21	CRANKSHAFT	A-84069	1	47	GASKET-cylinder	58292	1
22	ROLLERS-set of 31	A-54678	1	48	SLEEVE	58290	1
23	GASKET	83386	1				
24	ROD-connecting	A-59945	1				
25	Includes: BEARING-needle	59806	1				
26	SCREW	80346	2				

Accessories

A-83516 - Spark Arrestor requires #83548 Shim - one under each Muffer Stud.

A-64411 - Muffer and Shield Assembly

Includes: 84408 Cap, muffer 1
83865-A Screw, shoulder 3
84409-2 Shield, muffer 1
A-84410 Body, muffer 1

†Included in A-64411 Muffer & Shield Assy.

1050 Automatic

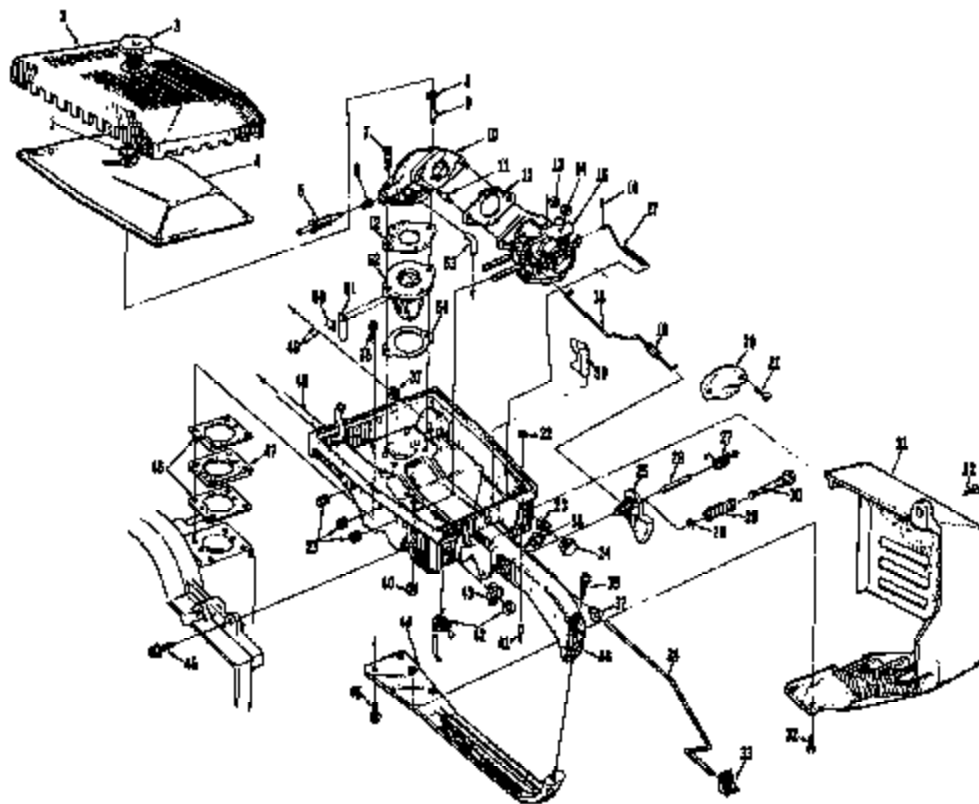


FIGURE 3

No.	Description	Part No.	Qty.	No.	Description	Part No.	Qty.
1	RING-retaining	58318-A	1	28	SPRING-lock	58405	1
2	COVER-air filter	58230-1	1	30	PIN-throttle lock	58404	1
3	NUT-cover	A-58228	1	31	SHIELD-muffler	58738-2	1
4	ELEMENT-air filter	58728	1	32	SCREW-hex, 12-24 x 5/8	58975	8
5	SCREW-idle adjusting	58657	1	33	BUTTON-oil rod	58357	1
6	SPRING-adjusting screw	58664	1	34	ROD-oil pump	58358-B	1
7	SCREW-hex, 1/4-20 x 1 1/2	58883	2	35	SCREW-hex, 12-24 x 1	58554	5
8	GASKET-stud	58382	1	36	HANDLE-throttle	A-58855	1
9	STUD-cover	58381	1	37	Includes: BUSHING-rod	58928	2
10	MANIFOLD-Intake	A-58828	1	38	BUSHING-lock pin	58984	1
11	STUD-carburetor	27484	2		PLUG-button (not shown)	54607	1
12	GASKET-carburetor	58853-A	2	38	STOP-rod	58930	1
13	WASHER-lock, 1/4	53009	2	40	PLUG-button	A-54744	1
14	NUT-hex, 1/4-20	51013-1	2	41	PIN-cutter	58301	1
15	CARBURETOR	A-53585	1	42	SWITCH-toggle w/nut	A-57650-B	1
16	PIN-cutter	56324	1	43	PLATE-"On-Off"	72085-A	1
17	ROD-choke	A-58354	1	44	BRACE-throttle handle	58185-A1	1
18	ROD-throttle	58238	1	45	SCREW-hex, 12-24 x 3/4	58887	3
19	BOOT-rod	58348	1	46	GASKET-spacer	58343	2
20	DEFLECTOR-carburetor	58837-2	1	47	SPACER	58881	1
21	SCREW-pan, 10-32 x 1/2	58625	2	48	LINE-fuel	58680	1
22	FELT	58280	1	49	SCREW-pan, 4-40 x 3/16	58688	6
23	GROMMET	58362	4	50	CLAMP-rod	58623	4
24	BUTTON-rod	57288-1	1	51	REED	58625	4
25	TRIGGER-throttle	58181-A	1	52	SEAT-reed valve	58627-1	1
26	SHAFT-trigger	58353	1	53	LINE-fuel (idle)	53858	1
27	SPRING-throttle	58352-A	1	54	GASKET	58945	1
28	RING-retaining	58408	1				

1050 Automatic

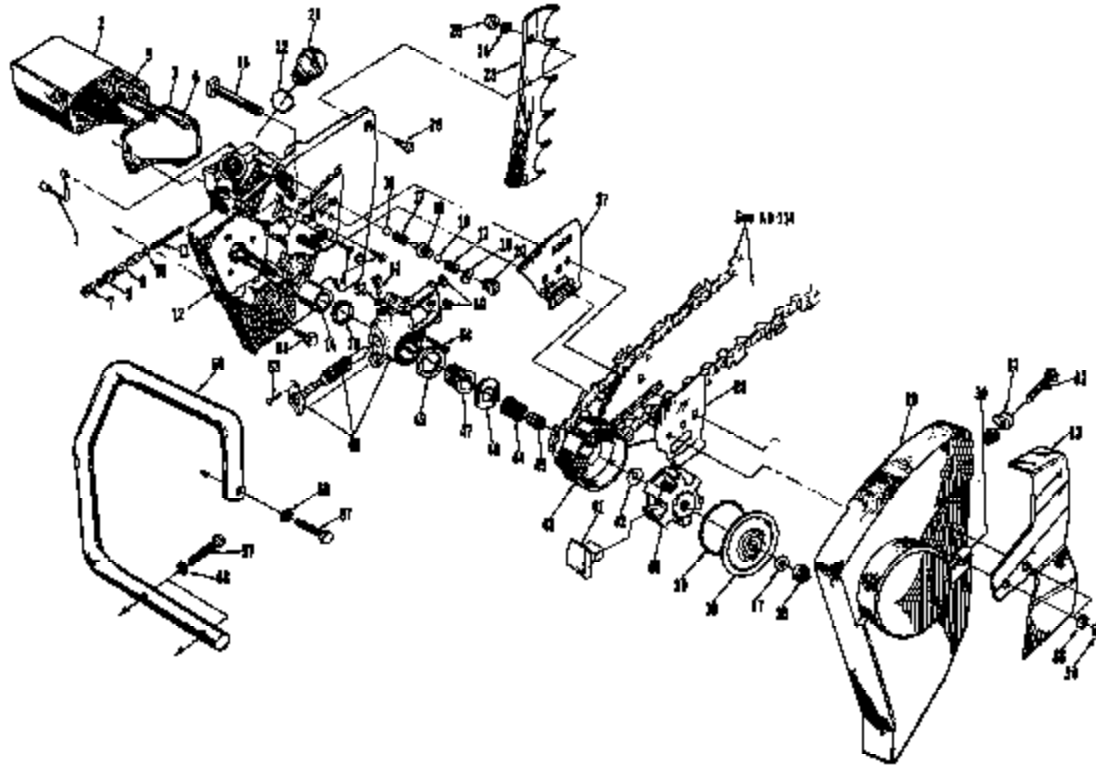


FIGURE 4

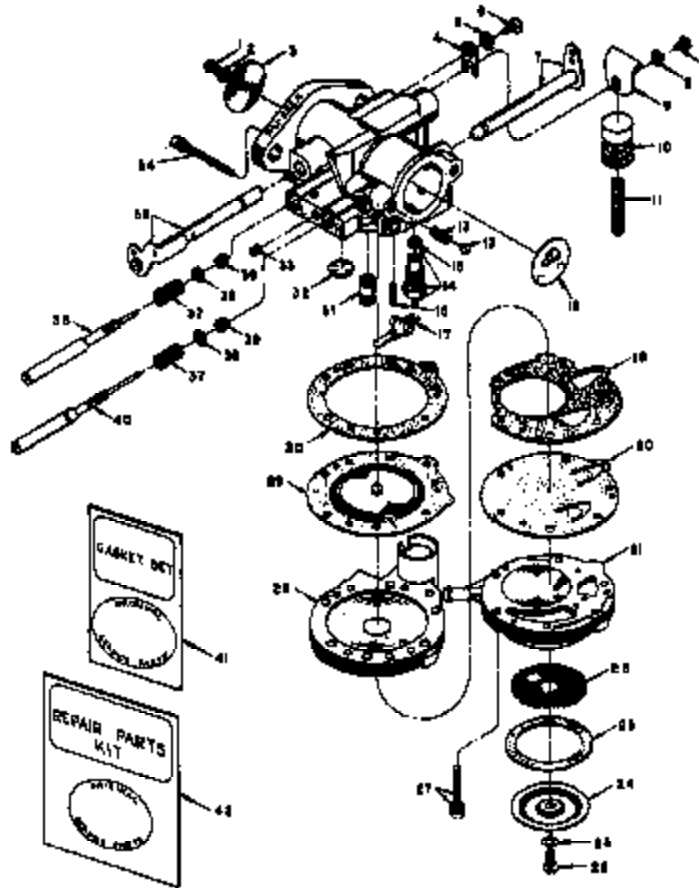
No.	Description	Part No.	Qty.	No.	Description	Part No.	Qty.
1	LOWER-oil pickup	A-64010	1	38	COVER-clutch	55238-A	1
2	RESERVOIR-oil	A-56941-A	1	38	SPRING-clutch	55238-C	2
3	Includes: GASKET-reservoir	67122	1	40	SPIDER-clutch	66049-2	1
4	SCREW-HS, 5-32 x 3/4	82126	3	41	SHOE-clutch	66076-3	6
	Pin-coiler (not shown)	86201	1	42	WASHER-thrust (outer)	66332	1
5	FILTER-oil	A-64281	1	43	SPROCKET & DRUM (Type Type)		
6	LOWER-oil pickup	53874	1		standard - .404 pitch, 8 tooth	A-57941	1
7	CONNECTOR-pump	58337-A	1		optional - 1/16" pitch, 7 tooth	A-66288	1
8	PLUNGER-oil pickup	A-67234-10	1		optional - 1/8" pitch, 7 tooth	A-68016	1
9	Includes: "O" RING-shaft	60074	1	44	Includes: BEARING-needle	66380	1
10	"O" RING-plunger	74388	1		SPROCKET & DRUM (Rim Type-opt.)	A-68848	1
11	SPRING-plunger	58293	1		Includes: DRUM & HUB	A-68021	1
*12	DRIVECASE	A-64204-B	1		SPROCKET-1/2" pt., 6 th.	67017	1
	Includes: TUBE-oil line (not shown)	50023	1		RACE-hub	61948	1
13	SEAL	66266-A	1		BEARING-needle	66380	1
14	BEARING-needle	63043	1	48	RACE-lambr	66231	1
15	BOLT-guide bar	58334	2	48	WASHER-thrust (inner)	66326	1
16	BALL-check	26027	2	49	WORM-gear	55893	1
17	SPRING	68022	2	48	PUMP-automatic oil (short stroke)	A-64073-A	1
*18	SEAT-valve	A-67828	1		PUMP-automatic oil (long stroke-opt.)	A-67570	1
19	GASKET	67123	2	49	Includes: SEAL-felt	60020	1
*20	CAP-check valve	67968	2	50	"O" RING	69074	2
21	CAP-oil	A-68717-A	1	51	SCREW-asm	64109-A	1
22	Includes: GASKET	64007	1	52	GASKET	67706	1
23	KIT-bumper splash	A-58543	1	53	SCREW	60910	2
	KIT-bumper splash (optional) NOTE 1	A-69088	1	54	SCREW-hex, 8-32 x 1/2	60003	3
24	Includes: WASHER-lock, 1/4	61008	2	55	SCREW-hex, 12-24 x 3/4	60867	1
25	NUT-hex, 1/4-20	62089	2	56	HANDLE BAR-flush out	A-66848-1	1
	SCREW-flat, 1/4-20 x 3/4	60060	2		Optional:		
*27	PLATE-guide bar (inner)	67649	1		HANDLE BAR-wrap around	A-58928	1
*28	PLATE-guide bar (outer)	67870	1		HANDLE BAR-wrap around-NOTE 1	A-58922	1
29	COVER-drivecase	A-64074-1A	1		HANDLE BAR-reversible bow-NOTE 2	A-64727	1
30	Includes: NUT-6/10-18	61123	1	67	SCREW-hex, 5/16-18 x 1 1/2	60067	3
31	PIN-adjusting	66113-1	1	68	WASHER-lock, 3/16	63003	3
32	SCREW	60017	1				
33	PLATE-guard-NOTE 1	64028-1	1				
34	NUT-hex, 3/8-18	62088-2	2				
35	WASHER-flat, 3/8	64008	2				
36	NUT-hex, 3/8-24	61102	1				
37	WASHER-flat	64027	1				

NOTE 1 - 7A-58922 Handle Bar requires 64028-1 Guard Plate
 NOTE 2 - 7A-64727 Handle Bar requires 60067 Screw

Accessories
 A-67571 Drivecase Cover Kit (extended)

ALWAYS FURNISH MODEL AND SERIAL NUMBER WHEN ORDERING PARTS.

1050 Automatic



HL-222A

No.	Part No.	Description	Qty.	No.	Part No.	Description	Qty.
1	30551	BORNSW-rod, 4-40 x 1/4	1	24	68528	COVER-strokebar	1
2	23008-1	WASHER-lock, #4	2	25	28098	GASKET-cover	1
3	77430	SHUTTER-throttle	1	26	†58525	SCREW-cover	1
4	73088	CLIP-throttle shaft	1	27	55216	BORNSW-HL, 8-32 x 13/16 w/lock washer	6
5	23000	WASHER-lock, #4	1	28	83882	COVER-diaphragm	1
6	73068	SCREW-flat, 8-32 x 5/16	1	29	†57829	DIAPHRAGM	1
7	63038	SHAFT & LEVER-choke	1	30	57824	GASKET-diaphragm	1
8	80006-1	SCREW-rod, 4-38 x 1/4	1	31	A-77429	NOZZLE-main	1
9	64007	CAM-accelerating pump	1	32	†30818	PLUG-expansion	1
10	†A-83898	PLUNGER-pump	1	33	73067	PLUG-channel	1
11	†63284	SPRING-pump	1	34	A-85728	PDN-inlet lever	1
12	23527	BALL	1	35	63807	SHAFT & LEVER-throttle	1
13	73284	SPRING-choke friction	1	36	†58950	NEEDLE-idle adjusting	1
14	†A-84779	NEEDLE & SEAT-inlet	1	37	†79078	SPRING-adjusting needle	2
15	†56344	Includes: GASKET	1	38	75733	WASHER-adjusting needle	2
16	†77436	SPRING-tension	1	39	75733	PACKING-adjusting needle	2
17	†86767	LEVER-inlet control	1	40	†55536	NEEDLE-main adjusting	1
18	77427	SHUTTER-choke	1	41	†83880	GASKET SET	1
19	58828	GASKET-fuel pump	1	42	63788	REPAIR KIT	1
20	†67728	DIAPHRAGM-fuel pump	1		83880	GASKET & DIAPHRAGM SET	1
21	59885	BODY-fuel pump	1				
22	†58527	SCREEN-fuel	1				
23	65761	GASKET	1				

* Denotes new parts
† Included in Repair Kit

Tools

- A-24284 WRENCH-combination
- 23874 PLUG-needle bearing (conn. rod)
- 83528 WRENCH-socket screw (conn. rod)
- 23828 PLIERS-snap ring (piston)
- 23136-2 BODY-assembly
- 22820-2 ADAPTER-main bearing
- A-23672 JACKSCREW
- 23070 PLATE-shaft aligning
- 23239-1 PLUG-needle assembly
- 23871 PLUG-drivecase steel
- 23683 SLEEVE-shaft (drivecase)

- A-23698 REMOVER-spider
- A-24028 REMOVER-rotor
- 83878 TOOL-drivecase bearing
- 23420 PLUG-clutch drum brg.

Paint

- 23475 SPRAY CAN-red

Detail

†23743 composed of "Direct Drive", "Gear Drive", "Starting Instructions", and two "Homelite" (letters 1/2" and 1/4" high).

1050 Automatic

Part No.	Description	Qty.	Part No.	Description	Qty.	Part No.	Description	Qty.	Part No.	Description	Qty.
19295-B	Screw	2	58172-A	Tank	1	58978-A	Baffle-muffler	1	58712	Shield (outer)	1
22820-B	Adapter	1	58181-A	Trigger	1	58983-A	Stud	2	58890	Bushing	1
22825	Plate	1	58185-A1	Brace	1	58929	Grommet	1	A-58348-1	Handle Bar	1
23136-2	Body	1	58188-B	Bearing	1	58043	Bearing	1	A-58991	Drum & Hub	1
23233-I	Plug	1	58202	Gasket	1	A-58071-D	Piston & Pin	1	57017	Sprocket	1
23420	Plug	1	58308-A	Seal	1	A-58072-A1	Crankcase	1	57122	Gasket	1
23475	Paint-red	1	58319-A	Ring	2	A-58088	Kit-bumper	1	57123	Gasket	1
23528	Wrench	1	A-58321	Lead	1	58103-1	Exchanger	1	57139	Cup-starter	1
23870	Plate	1	58334	Bolt	2	58290	Felt	1	57177	Bushing	1
23971	Plug	1	58397-A	Connector	1	58356	Gasket	1	A-57511	Kit-cover	1
A-23972	Jackscrew	1	A-58341-A	Reservoir-oil	1	A-58318	Spark Arrestor	1	A-57878	Pump-oil	1
25899	Sleeve	1	58343	Gasket	2	58547-B	Spark Plug	1	*57668	Plate (inner)	1
A-23999	Remover	1	58348	Boot	1	42543	Shim	1	*57870	Plate (outer)	1
23741	Decal	1	58352-A	Spring	1	A-58586	Carburetor	1	*57958	Cap	2
23874	Plug	1	58353	Shaft	1	58590	Gasket & Dia.	1	*A-57959	Seat-valve	1
23878	Tool	1	A-58354	Rod-choke	1	58555-A	Gasket	2	72085-A	Plate-on-off	1
A-24028	Remover	1	58356-B	Rod-pump	1	58556	Line-fuel	1	73007	Plug	1
A-24284	Wrench-comb.	1	58357	Button	1	58557	Screw-idle	1	73015	Spring	2
25028	Gasket	1	58361	Stud	1	A-58081	Cylinder	1	73066	Clip-shaft	1
25527	Ball	3	58362	Grommet	4	42864	Spring	1	73068	Screw	1
27404	Stud	2	58364	Fitting	1	A-58686	Handle-throttle	1	73264	Spring	1
28098	Gasket	1	58367	Gasket	1	58692	Cover	1	74332	Pin	2
30618	Plug	1	58382	Lead	1	58694	Spring	1	74333	"O" Ring	1
55076-3	Shoe	3	58391	Spacer	1	A-58696	Pfunger	1	75078	Key	1
58123-C	Spring	2	58392	Gasket	1	58697	Shaft & Lever	1	75732	Packing	2
58200	Sleeve	1	A-58393	Handle Bar	1	58698	Shaft & Lever	1	75735	Washer	2
58318	Screw	6	58404	Pip	1	A-58117-A	Cap-oil	1	77426	Spring	1
58344	Gasket	1	58405	Spring	1	58728	Element	1	77427	Shutter	1
A-58373-A	Terminal	1	58406	"O" Ring	1	58733-2	Shield-muffler	1	A-77428	Nozzle-main	1
58513-1	Pin	1	58409	Ring	1	58735	Cap	1	77430	Shutter-throttle	1
58680	Line	1	58517	Insert	1	A-58736-1	Shield-cyl.	1	PARTENING PARTS		
A-58726	Pin	1	58520	Screw-cover	1	58738	Repair Kit	1	80006-1	4-36 x 1/4	1
58747	Lever	1	58528	Cover-strainer	1	58890	Gasket Set	1	80053	1/4-20 x 3/4	2
58741	Gasket	1	58527	Screen-fuel	1	A-58528	Manifold	1	80087	5/16-18 x 1 1/2	3
58805	Line	1	58529	Gasket	1	58556-A	Screw	3	80345	10-32 x 5/8	2
58971	Stud	4	58536	Needle-main	1	58929	Worm	1	80403	1/4-20 x 5/8	1
58937	Grip	1	A-58543	Kit-bumper	1	A-54910	Line-oil	1	80513	8 x 1/2	1
58946	Gasket	1	58546-2	Spdr	1	58927	Washer-flat	1	80890	3-32 x 1/2	3
58988	Nut	1	58680	Needle-idle	1	58928-1	Plate-guard	1	80931	4-40 x 1/4	1
58998-2	Gasket	1	58756	Pawl	2	58949-A	Lock	1	80958	10-24 x 1/2	1
58979	Cover	1	58758-1	Spring	2	58950+1	Pulley	1	80917	5/16-18 x 2	1
58980	Clamp	1	58763	Washer	1	58952	Shield	1	80925	10-32 x 1/2	2
58983	Washer	1	58809	Rope	1	58953-A	Rotor	1	80948	10-32 x 1/2	1
58984	Wick	1	58837-2	Deflector	1	58954	Stud	2	80958	4-40 x 3/16	8
58986-A	Coil	1	58851	Washer	2	A-54968	Crankshaft	1	80960	10-24 x 7/8	1
58987	Condenser	1	58829	Bushing	2	A-54972-A	Pump-oil	1	80976	12-24 x 5/8	3
58914	Clamp	1	58930	Stop	1	A-54974-1A	Cover-drivecase	1	80937	12-24 x 3/8	3
58982	Washer	1	58932	Spring	2	54102-A	Screw	1	80984	12-24 x 1	2
58983	Bearing	1	58923	Tube-oil	1	A-54140-1	Cap-fuel	1	80987	12-24 x 3/4	1
58931	Race-inner	1	58964	Bushing	1	54144	Decal	1	80989-1	10-32 x 3/8	5
58936	Washer	1	58974	"O" Ring	2	A-54178-3	Cover-starter	1	80982	1/4-20 x 1 1/2	2
58938-A	Cover	1	58984-1	Housing-fan	1	54180-A	Spring	1	80986	5/16-18 x 7/8	1
58939-A	Seal	1	A-58922	Nut-cover	1	*A-54284-B	Drivecase	1	80913	4-40 x 1/4	2
58990	Ring	1	58920-1	Cover-filter	1	A-54293	Filter-oil	1	81033-1	Nut-1/4-20	2
58991	Piston Ring	2	A-58921	Filter	1	*54327	Cam-pump	1	81063	Nut-1/4-20	2
58992-A	Seal	1	58922-1	Filter	1	54408	Cap-muffler	1	81065-2	Nut-1/4-20	4
A-58999	Spkt. & Drum	1	58923	Body-pump	1	54409-3	Shield-muffler	1	81089-2	Nut-3/8-20	2
58997	Gasket	1	58924	Spring	1	A-54410	Body-muffler	1	81104	Nut-7/16-20	1
A-58916	Spkt. & Drum	1	58925	Rod-throttle	1	A-54411	Muffler & Shield	1	81123	Nut-5/16-18	1
57288-1	Button	1	58926	Bearing	1	54907	Plug	1	81192	Nut-3/8-24	1
A-57341	Spkt. & Drum	1	58927-1	Seat-reed	1	A-54878	Rollers-set	1	82158	3-32 x 3/4	6
A-57650-3	Switch	1	58928	Reed	4	A-54727	Handle Bar	1	83009	Washer-#8	1
57729	Diaphragm	1	58929	Clamp	4	54743	Ring	1	83003	Washer-5/16	3
57733	Tab	1	58974	Line-oil	1	A-54744	Plug	1	83008-1	Washer-#8	3
57744	Box-breaker	1	58978	Gasket	1	*A-54773	Needle & Seat	1	83009	Washer-1/4	8
57749	Screw Group	1	58920-2	Cover-tank	1	55348	Race-inner	1	83046	Washer-#10	3
57750	Screw Group	1	A-58922	Handle Bar	1	55358	Gasket	1	83061	Washer	2
57824	Gasket	1	58926	Seal	1	58390-1	Screen-fan	1	84047	Washer	1
57829	Diaphragm	1	A-58927-B	Body-muffler	1	55393	Bearing	1	84088	Washer-3/8	2
A-57854-10	Plunger	1	A-58945	Rod-conn.	1	A-55548	Spkt. & Drum	1	84301	Pin-cocker	2
A-58165	Point Set	1	A-58983	Cap-muffler	1	56711	Shield (inner)	1	85324	Pin-cocker	1

*Denotes new parts

