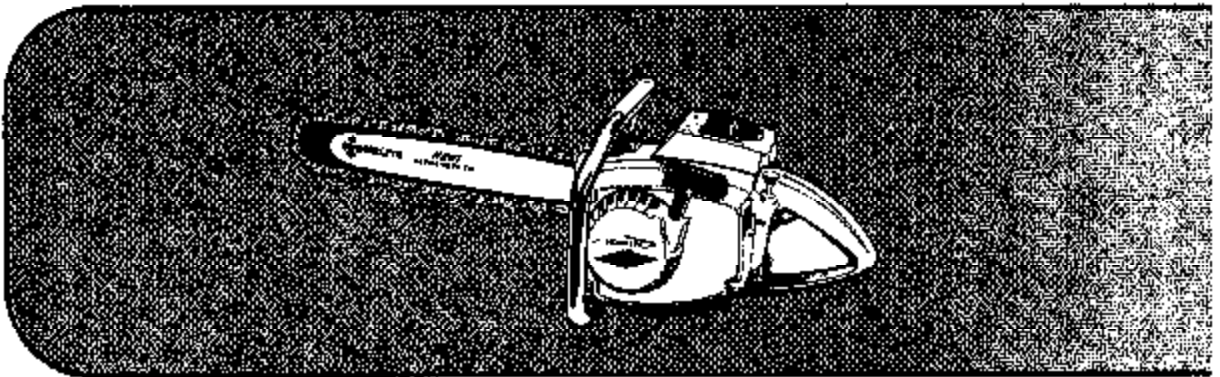


CHAIN SAW PARTS LIST

HOMELITE®



SUPER XL AUTOMATIC

UT10045

SUPER XL AUTOMATIC

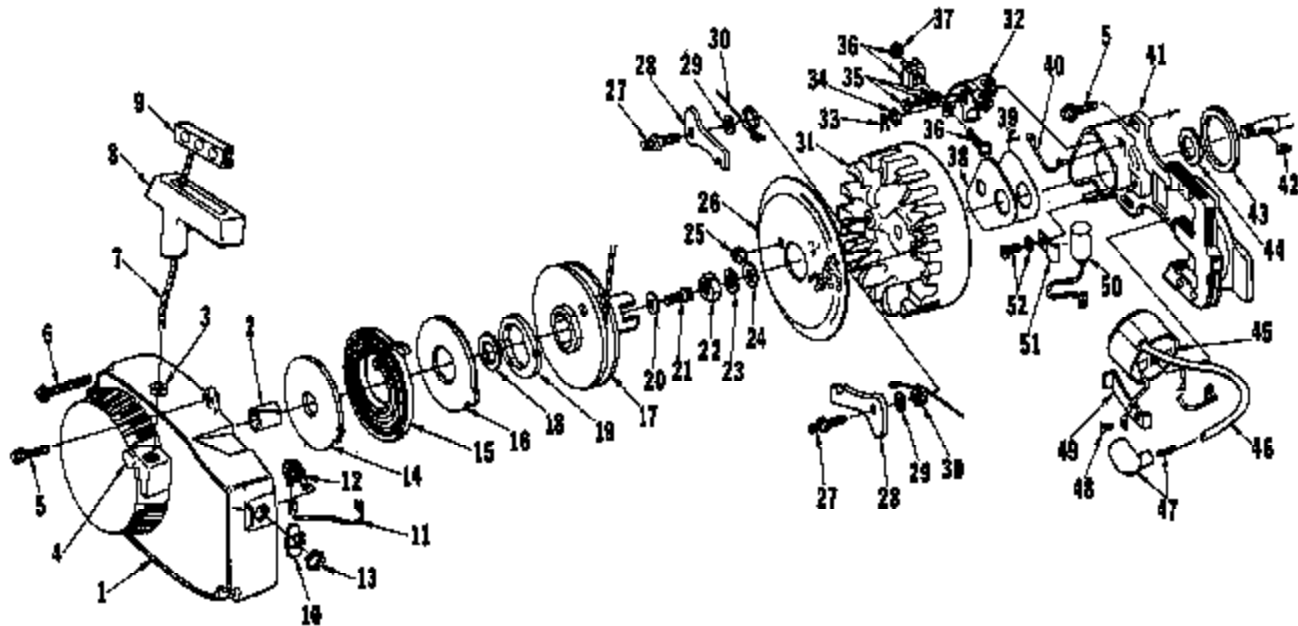


FIGURE 1

No.	Description	Part No.	Qty.	No.	Description	Part No.	Qty.
1	HOUSING-fan	A-64818	1	32	POINT SET-w/felt & terminal block	(P) A-58881	1
2	Includes: BUSHING-starter	64448	1		POINT-w/felt	(W) A-58914	1
3	BUSHING-ropc	67177	1	33	Includes: COTTER PIN	(W) 28008	1
4	DRIVE STUD	59007	1	34	WASHER	(W) 28028	as req'd
5	SCREW-hex, 12-24 x 5/8	80076	4	35	SCREW GROUP-points	(W) 76421	1
6	SCREW-hex, 12-24 x 1-11/16	58969	3		SCREW GROUP-points	(P) 57749	1
7	ROPE-starter	58806	1	36	TERMINAL BLOCK GROUP	(W) A-58834	1
8	GRIP-ropc	58915	1	37	NUT (only)-terminal	(P) 55962	1
9	INSERT	58847	1	38	COVER-breaker box	(W) 58811	1
10	PLATE-"On-Off"	72085-A	1		COVER-breaker box	(P) 69904	1
11	LEAD-ground w/terminal	A-58091	1	39	CASKET-cover	(W) 58810	1
12	SWITCH	A-57050-3	1		CASKET-cover	(P) 58805	1
13	Includes: NUT	72084-A 1	1	40	CLIP-cover	(W) 70413	1
14	SHIELD-spring (inner)	58638-A	1		CLIP-cover	(P) 58806	1
15	SPRING-rcool	58704-A	1	41	BOX-breaker	(W) 58875-A	1
16	SHIELD-spring (outer)	58899-A	1		BOX-breaker	(P) 58859	1
17	PULLEY-starter	A-04446	1	42	KEY-rotor	75078	1
18	Includes: BUSHING-spring	64400		43	CASKET	69536	1
19	LOCK-spring	04049-A	1	44	SEAL-felt	69700	1
20	WASHER-retaining	58762	1	45	COIL	(W) 58874	1
21	SCREW-hex, 10-32 x 1/2	80048	1		COIL	(P) 59660	1
22	NUT-hex, 5/16-24	81117	1	46	LEAD-hl tension	58900	1
23	WASHER-lock, 5/16	80002	1	47	TERMINAL	A-83065	1
24	WASHER-flat, 5/16	84056	1	48	SCREW-coil clip	(W) 64690	1
25	NUT-Flexloc, #10-32	81109-2	2		SCREW-coil clip	(P) 55977	1
26	SCREEN-starter	58765	1	49	CLIP-coil retaining	(W) 63720	1
27	STUD-pawl	58757-B	2		CLIP-coil retaining	(P) 58809	1
28	PAWL-starter	58760	2	50	CONDENSER-w/clamp	(P) 69902	1
29	WASHER	58861	2		CONDENSER	(W) 03250	1
30	SPRING-starter pawl	58758	2	61	CLAMP-condenser	(W) 05622	1
31	ROTOR-magneto	(W) 58808	1	52	SCREW GROUP-condenser	(W) 30201	1
	ROTOR-magneto	(P) 58857	1		SCREW GROUP-condenser	(P) 57700	1

(W) Wico (P) Phelon

Wico and Phelon parts are not interchangeable.

SUPER XL AUTOMATIC

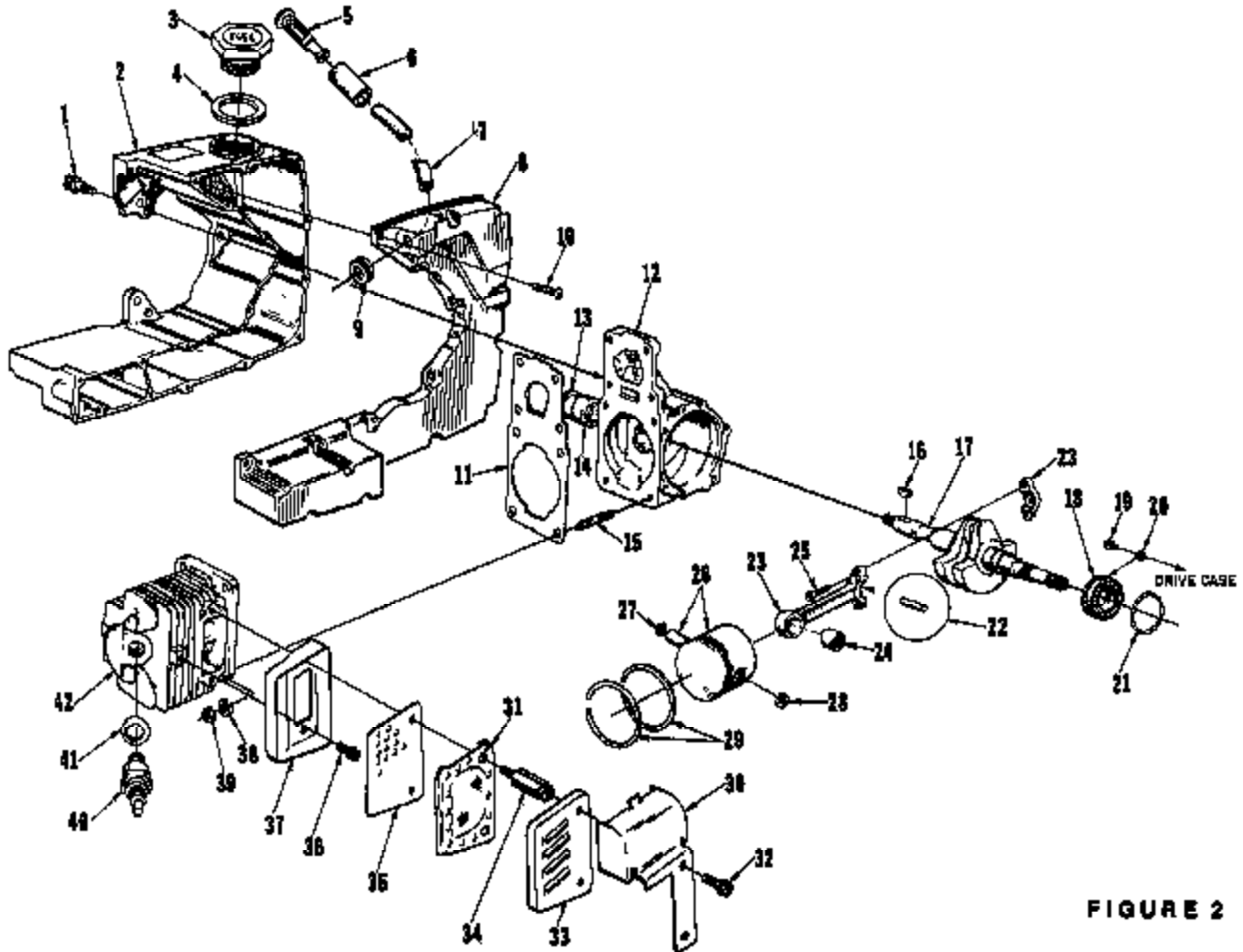


FIGURE 2

No.	Description	Part No.	Qty.	No.	Description	Part No.	Qty.
1	SCREW-shoulder	89407	3	22	ROLLER-set (31)	A-83496	1
2	TANK-fuel	A-58395	1	23	ROD-connecting	A-83477	1
	Includes:				Includes:		
3	CAP-fuel filler	A-55285-B	1	24	BEARING	58724	1
	Includes: VALVE-check (not shown)	83718	1	25	SCREW-socket, 8-32 x 1/2	80542	2
4	GASKET	88861	1	26	PISTON & PIN	A-59468-C	1
5	FILTER-fuel	A-59251	1		Includes:		
	Includes:			27	RING-retaining	75120	1
6	FILTER-felt	58253-1	1	28	RING-retaining	84813	1
7	LINE-fuel	86155	1	29	PISTON RING	59438	2
8	COVER-fuel tank (Note 1)	83739-2	1	30	EXCHANGER-heat (accessory)	A-63821	1
9	GROMMET	86046	1	31	ARRESTOR-spark (accessory) (Note 2)	A-83500	1
10	SCREW-rd., #6 x 1/2	80613	16		MUFFLER-cap type	A-68748	1
11	GASKET-cylinder	59771	1		Includes:		
12	CRANKCASE	A-58788-D	1	32	SCREW-hex, 10-24 x 9/16	80825	2
	Includes:			33	CAP-muffler	A-63246	1
13	SEAL	56686-A	1	34	STUD	59891-B	2
14	BEARING	86956	1	35	BAFFLE	50050	1
15	STUD	55871	4	36	SCREW-hex hd., 12-24 x 1/2	80621	1
16	KEY-rotor	75078	1	37	BODY-muffler	A-59895-A	1
17	CRANKSHAFT	63498	1	38	WASHER-lock, 1/4	83009	6
18	BEARING-ball	58190-S	1	39	NUT-1/4-28	81085-2	4
19	SCREW-bearing retainer	59704	2	40	SPARK PLUG	63647-S	1
20	WASHER-lock	59705	2	41	Includes: GASKET	25038	1
21	RING-retaining	58919-A	1	42	CYLINDER	58708-B1	1

NOTE 1 - 58693-3 Fuel Tank Cover is still available for older units.

NOTE 2 - Use #83503 Shim (.030) under Muffler Studs with Spark Arrestor.

ALWAYS FURNISH MODEL AND SERIAL NUMBER WHEN ORDERING PARTS

SUPER XL AUTOMATIC

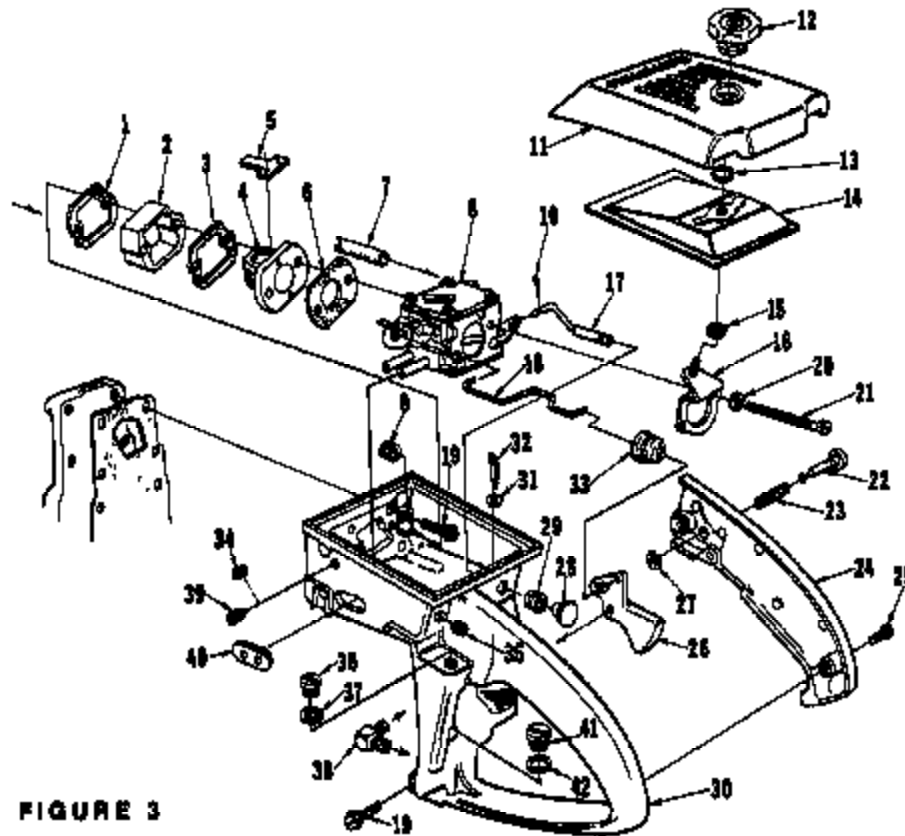


FIGURE 3

No.	Description	Part No.	Qty.	No.	Description	Part No.	Qty.
1	GASKET-spacer	58274	1	21	SCREW-hex, 10-32 x 2-11/16	80921	2
2	SPACER	59718	1	22	PIN-throttle latch	5624-4	1
3	RETAINER-reed valve	63240-A	1	23	SPRING-throttle latch	58406	1
4	SEAT-reed valve	63253	1	24	COVER-throttle handle	A-58213	1
5	VALVE-reed	59678-B	4		Includes: BUSHING-pin	59094	1
6	GASKET-carburetor	59722	1	25	SCREW-pan, 8-32 x 1/2	50550	2
7	LINE-fuel (Note 1)	68155	1	26	TRIGGER-throttle	52859	1
8	CARBURETOR (Note 2)	A-58383	1	27	RING-retaining	56409	1
	CARBURETOR	A-58407	1	28	BUTTON-choke rod	87289-1	1
	Includes:			29	GROMMET	58382	1
	GROMMET (See Fig. 2)	58048	1	30	THROTTLE HANDLE	A-67840	1
9	GROMMET	58579	1		Includes:		
	LINE-fuel (Index #7)	68155	1	31	WASHER-felt	63290	1
10	COTTER PIN	80324	1	32	COTTER PIN	86901	1
11	COVER-air filter	58773-5	1	33	SCOT-throttle rod	47634	1
12	NUT-air filter cover	A-55272	1	34	PLUG	63303	1
13	RING-retaining	58919-A	1	35	PLUG	63910	1
14	FILTER ELEMENT	63539	1	36	PLUG (Note 3)	59788-2	1
15	GASKET-mounting stud	58982-1	1	37	GASKET (Note 3)	59799	1
*16	BRACKET-mounting	A-58322-A	1	38	VALVE-check	A-58011	1
17	ROD-choke	A-58326	1	39	SCREW-idle (Note 4)	63302-A	1
18	ROD-throttle	59763	1	40	GROMMET-Hi-Lo	59770	1
19	SCREW-hex, 12-24 x 7/8	60851	5	41	CAP-check valve	68143	1
20	WASHER-lock, #10	82046	2	42	GASKET-check valve cap	63144	1

* Denotes New Parts

Note 1 - The 53748 Fuel Line is available for A-58767-C and A-58962 Carburetors

Note 2 - The A-58383 and A-58407 Carburetors require 68155 Fuel Line, 56406 Grommet and 58279 Grommet.

Note 3 - Index numbers 35 Plug and 37 Gasket must be removed when A-58968 Manual Oil Pump Kit is assembled to the unit.

Note 4 - The A-58767-C Carburetor is supplied with idle stop screw and spring (internal adjustments only); when either external adjustment screw 63302-A or 59916 is used (see Plugs below), discard internal adjustment screw and spring. Refer to Carburetor Parts List 53766-C, use Repair Kit 57889 and Gasket Set 57886.

PLUGS - Use 63303 screw plug in tapped hole for index #39.

SUPER XL AUTOMATIC

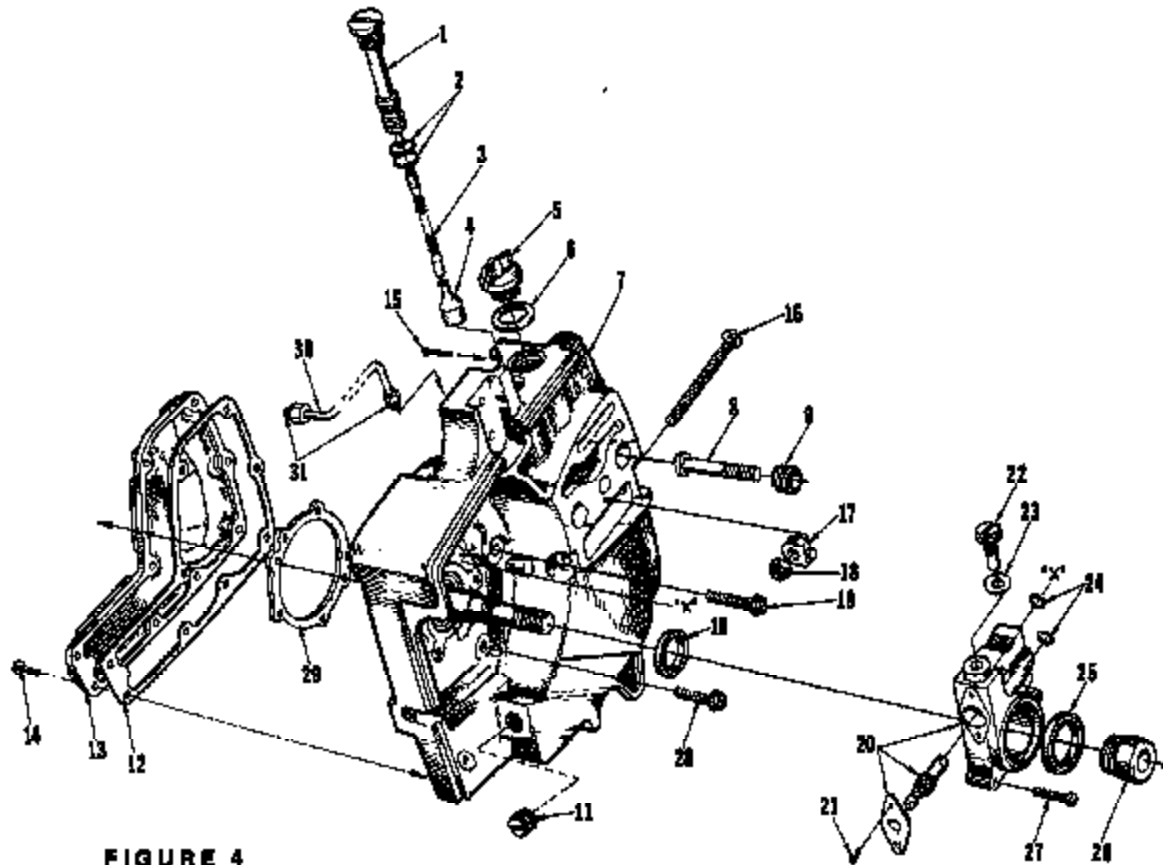


FIGURE 4

No.	Description	Part No.	Qty.	No.	Description	Part No.	Qty.
1	TUBE-oil line	59325-1	1	16	SCREW-guide bar adjusting	83225	1
2	"O" RING	59765	2	17	PIN-bar adjusting (Note 2)	87588-1A	1
3	LINE-oil	59874	1	18	NUT-lock, 1/4-20	81108	1
4	FILTER-oil	A-58828	1	19	SCREW-hex, 12-24 x 1	80864	1
5	CAP-filler oil	A-63717-A	1	20	PUMP-automatic oil	A-59809-A	1
	Includes:				Includes:		
6	GASKET	56807	1	21	SCREW-pan, 4-40 x 1/4	80918	2
	VALVE-check (not shown)	63718	1	22	SCREW-cam	64102-A	1
7	DRIVECASE	A-59930-E	1	23	GASKET	59738	1
	Includes:			24	"O" RING	59074	2
8	STUD-guide bar, 3/8"			25	SEAL-felt	59926	1
	(See Note 1)	87475	2	26	WORM	59975	1
9	INSERT-threaded (Note 1)	87476	2	27	SCREW-fil, 8-22 x 3/4	80248	3
10	SEAL	58808-A	1	28	SCREW-hex, 12-24 x 9/16	80898	4
11	PLUG	26097	1	29	GASKET	63855	1
12	GASKET-oil reservoir	59710	1	30	LINE-oil (discharge)	A-59808	1
13	COVER-oil reservoir	59649-4A	1		Includes:		
14	SCREW-rd., 6-32 x 1/2	80513	9	31	BLEEVE-compression	25301	2
16	COTTER PIN	86301	1				
	CAP-check valve (not shown)	65143	1				
	GASKET-check valve cap (not shown)	58338	1				

Note 1 - When using 59764-A Stud (5/16") and 59898-A Insert, Guide Bar Plates 58791 (inner) and 58782 (outer) must be used.

Note 2 - 58782-1 Pin must be used with 5/16" round hole Guide Bar and 87588-1 Pin must be used with rectangular hole Guide Bar.

SUPER XL AUTOMATIC

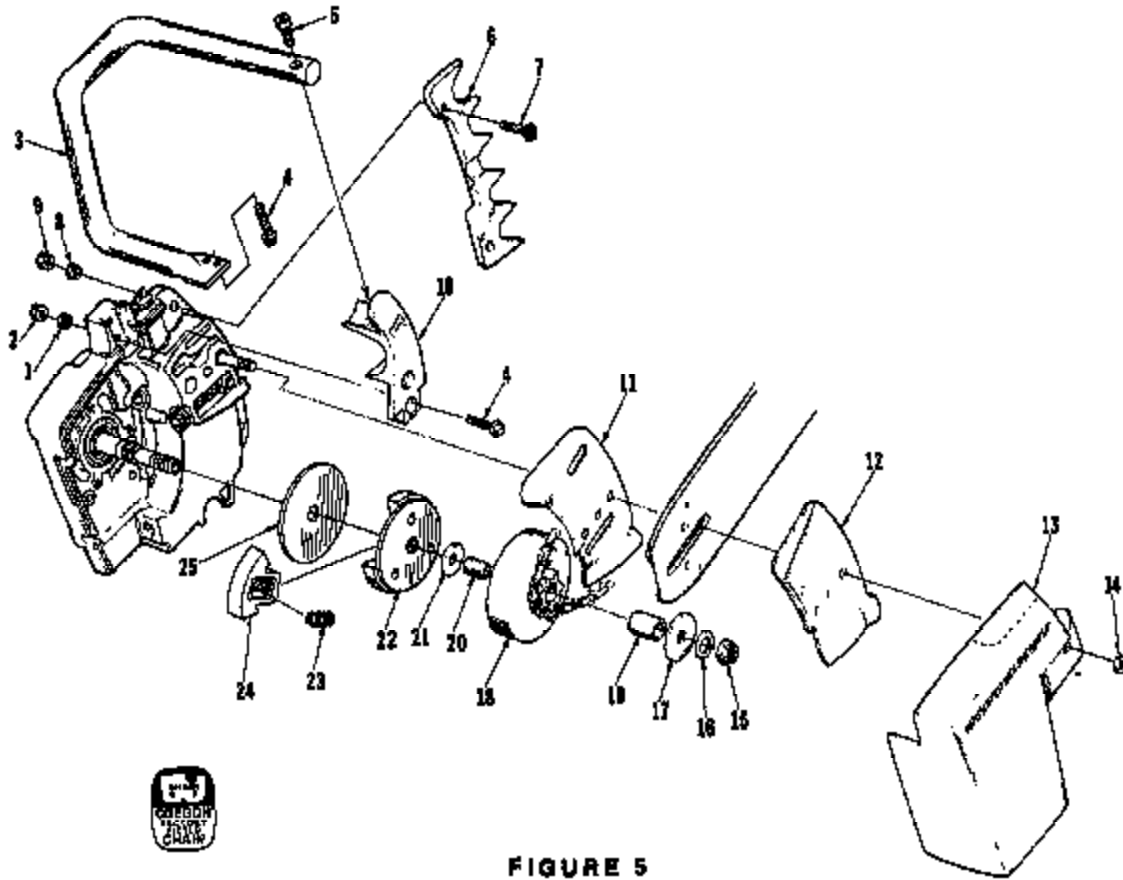


FIGURE 5

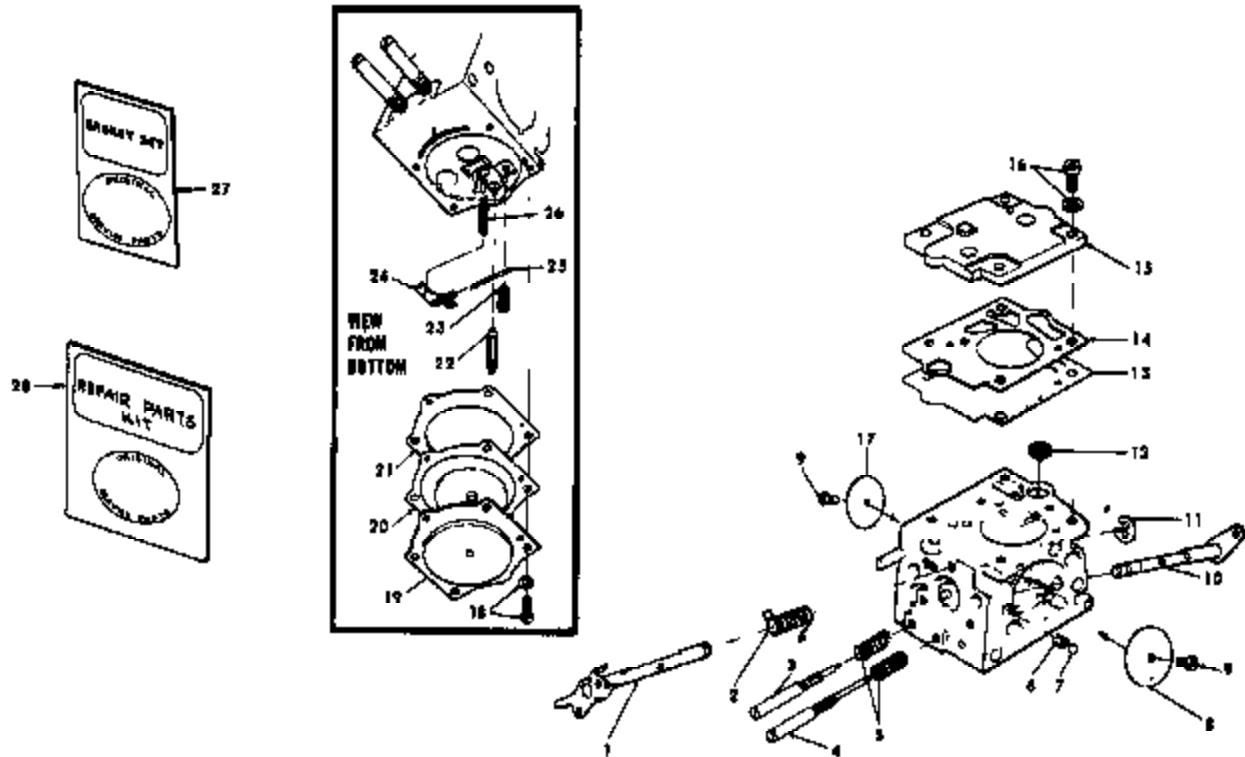
No.	Description	Part No.	Qty.	No.	Description	Part No.	Qty.
1	WASHER-lock, #12	89058	2	18	SPROCKET & DRUM (Note 3)		
2	NUT-hex, 12-24	81084	2		standard - 3/8" pitch, 7 tooth	A-58552	1
3	HANDLE BAR-flush out	A-58790	1		optional - 3/8" pitch, 8 tooth	A-63340	1
	KIT-wrap-around handle bar (accessory)				.404 pitch, 7 tooth	A-58555	1
	(Note 1)	A-83422	1	19	Includes: BEARING-needle	72311	1
	Includes:				KIT-hub & drum (accessory)	A-07080	1
	HANDLE BAR	A-63421	1		Includes:		
	BRACKET-handle bar	58651-6	1		rim type (not shown)		
	BRACKET-drivecase	63406	1		HUB & DRUM-"Splined"	A-65890	1
	SCREW-hex hd, 12-24 x 5/8	80676	1		BEARING-needle (cage)	64124	1
4	SCREW-hex, 12-24 x 3/4	80887	4		RACE-inner	65740	1
5	SCREW-socket	60428	1		WASHER-thrust (outer)	58838	1
6	BUMPER KIT-spliked (accessory)	A-89049	1		SPROCKET-splined (accessory not shown)		
	Includes:				rim type - 3/8" pitch, 7 tooth	OM-88210	1
7	SCREW-hex, 12-24 x 3/4	80887	2		.404 pitch, 7 tooth	OM-10518	1
8	WASHER-lock, #12	89058	2	20	RACE-inner	58584	1
9	NUT-hex, 12-24	81084	2	21	WASHER-thrust (inner)	58838	1
10	BRACKET-handle bar	58651-1	1		CLUTCH & COVER	A-68608	1
11	PLATE-guide bar (inner) (Note 2)	67509	1		Includes:		
12	PLATE-guide bar (outer) (Note 2)	67510	1	22	PLATE-clutch	63058-1	1
13	COVER-drivecase	58750-2	1	23	SPRING-clutch	63034	3
14	NUT-hex, 9/8-16	81089-2	2	24	SHOE-clutch	63062	3
15	NUT-lock, 3/8-24	81182	1	25	COVER-clutch	63051	1
16	WASHER-flat, 3/8	84010	1				
17	WASHER-thrust (outer)	58828	1				

Note 1 - A-63421 HANDLE BAR requires 58651-6 Bracket to replace index #10, and another 63406 Bracket which mounts on drivecase cover. 80676 Screw attaches drivecase cover bracket to handle bar.

Note 2 - When using 67509 Guide Bar Plate (inner) and 67510 Guide Bar Plate (outer) 67475 Guide Bar Stud, (3/8") and 67476 Insert must be used.

Note 3 - Check type and number of teeth before ordering. "Splined" Hub & Drum requires one of the "Splined" sprockets listed.

SUPER XL AUTOMATIC



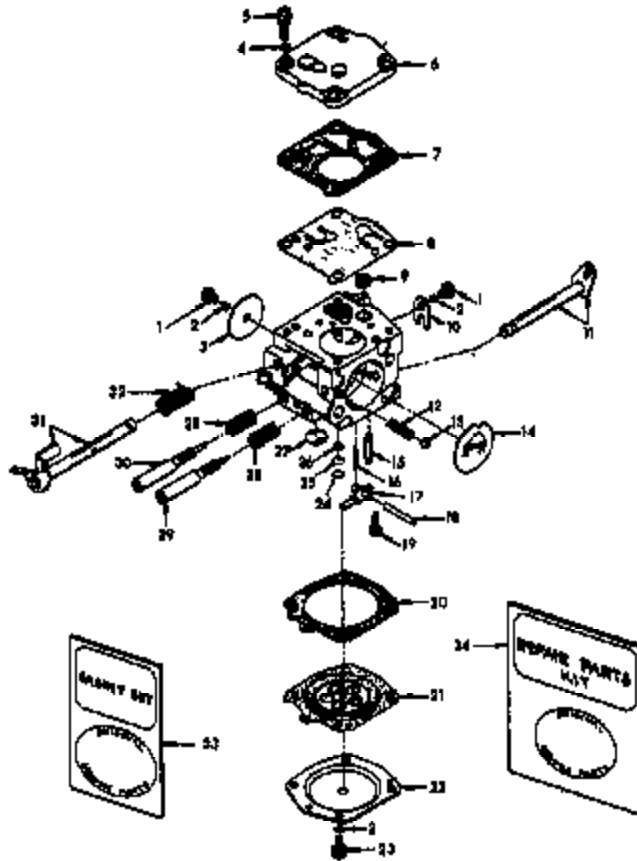
A-68407 (SDC-29)

No.	Description	Part No.	Qty.	No.	Description	Part No.	Qty.
1	THROTTLE SHAFT ASSEMBLY	87007	1	17	SHUTTER-throttle	87003	1
2	SPRING-throttle return	† 87008	1	18	SCREW ASSEMBLY	84889	4
3	NEEDLE-idle	† 87004	1	19	COVER-metering diaphragm	84224	1
4	NEEDLE-high speed	† 87011	1	20	DIAPHRAGM-main control	† 84236	1
5	SPRING-needle adjusting	† 84236	2	21	GASKET-metering diaphragm	† 84231	1
6	SPRING-choke friction	84238	1	22	NEEDLE-inlet	84229	1
7	BALL-choke friction	80051	1	23	SCREW-metering lever pin	† 84888	1
8	SHUTTER-choke	84228	1	24	LEVER-metering	84245	1
9	SCREW-valve	† 84893	2	25	PIN-control lever fulcum	† 84244	1
10	CHOKE SHAFT ASSEMBLY	84227	1	26	SPRING-metering lever	† 87005	1
11	RING-throttle shaft retaining	84221	1	27	GASKET SET	87019	1
12	SCREEN-fuel inlet	† 84243	1	28	REPAIR KIT	87020	1
13	DIAPHRAGM-fuel pump	† 84233	1		REPAIR KIT-check valve (not shown)		
14	GASKET-fuel pump	† 87008	1		(Note 1)	85386	1
15	COVER-fuel pump	87002	1		FUEL LINE-shown on Figures 2 & 3	88156	1
16	SCREW-fuel pump cover	84894	4		GROMMET-shown on Figure 2	88046	1
					GROMMET-shown on Figure 3	88279	1

† Included in Repair Kit

Note 1 - Accessory 24173 Driver-check valve installation is used with 85386 Repair Kit.

SUPER XL AUTOMATIC



A-68363 (HS-96A)

No.	Description	Part No.	Qty.	No.	Description	Part No.	Qty.
1	SCREW-rd. hd., 4-40 x 3/16	80264	2	18	PIN-control lever fulcum	58977	1
2	WASHER-lock, #4	83008-1	5	19	SCREW-pan hd., 4-40 x 5/16	58982	1
3	THROTTLE SHUTTER	26050	1	20	GASKET-main diaphragm	58978	1
4	WASHER-lock, #6	83024	4	21	DIAPHRAGM-main control	58986	1
5	SCREW-flt, 6-32 x 3/8	80275	4	22	COVER-diaphragm	58979	1
6	COVER-pump	58975	1	23	SCREW-rd. hd., 4-40 x 1/4	80591	4
7	GASKET-fuel pump	58981	1	24	PLUG-Welch 3/16, aluminum	58994	1
8	DIAPHRAGM-fuel pump	58980-R	1	25	RING-retaining	57819	1
9	SCREEN-fuel inlet	58974	1	26	SCREEN-channel	59500	1
10	CLIP-throttle shaft	58982	1	27	PLUG-Welch, 11/32	58991	1
11	CHOKE SHAFT & LEVER	58990	1	28	SPRING-adjusting needle	73075	2
12	SPRING-choke friction	73264	1	29	NEEDLE-main adjusting	58986	1
13	BALL-choke friction	25627	1	30	NEEDLE-idle adjusting	58985	1
14	SHUTTER-choke	58984	1	31	THROTTLE	A-68345	1
15	NEEDLE-inlet	59717	1	32	SPRING-throttle return	59460	1
16	SPRING-control lever	55759	1	33	GASKET SET	87866	1
17	LEVER-inlet control	59718	1	34	REPAIR KIT	87869	1

A-68363 carburetor replaces A-58767-C on units above S/N 3351S10 and is an alternate for A-68407 (SDC-29).

SUPER XL AUTOMATIC

Tools

23848-4	ANVIL-crankshaft installation
22820-1	COLLAR-ball bearing installation
24173	DRIVER-check valve
A-23137	JACKSCREW
22828	PLIERS-piston snap ring
23758	PLUG-bearing assembly & disassembly-conn. rod
23757	PLUG-bearing assembly & disassembly-drive & crankcases
23819	PLUG-bearing installation
23758	PLUG-seal assembly-drive and crankcases
23845	PLUG-seal installation-drivecase assembly
A-23948	PLUG-piston pin removal
A-23960	PULLER-magneto remover
23884-A	SLEEVE-bearing & shaft installation
23183-2	SLEEVE-bearing & shaft installation
23844	SLEEVE-seal protecting
23759	SLEEVE-seal protecting - crankshaft
23843	SLEEVE-seal installation-drivecase
23800	SLEEVE-seal installation-drive & crankcases
A-23937-B	WRENCH-combination
23628	WRENCH-hex socket screw (conn. rod)
A-23841-A	WRENCH-insert (guide bar stud)
A-23822	WRENCH-insert 3/8" (guide bar stud)
A-23934	WRENCH-spanner to assemble & disassemble clutch

Paint

24453	LACQUER-"70" blue
24101	SPRAY CAN-blue
23560	SPRAY CAN-white

SUPER XL AUTOMATIC

Accessories

KIT-manual oil pump	A-65868
Includes: BUTTON	57289-1
LINE-oil	A-59819
Includes: GROMMET	59794
VALVE-check	A-59818
Includes: BALL	25527
FILTER-oil (intake)	A-59804
Includes: FILTER	A-55259-A
PLUNGER	A-57834-10
Includes: "O" RING	74388
"O" RING	59074
SPRING	59299

When this KIT is assembled to the unit, the unit will have a complete Manual Oil System.

KIT-muffler & noise suppressor	A-63434-A
(When Spark Arrestor & Noise Suppressor are used together use 63503-1 Shim (.060) under Muffler Studs.	
Includes: BODY-muffler	A-59895-A
CAP-muffler	A-63246
STUD-muffler	59891-B (2)
SCREW-hex hd. , 10-32 x 9/16	80825 (2)
SCREW-pan hd. , 12-24 x 1/2	80963
SUPRESSOR-noise	A-63080
Includes: SCREW- pan, 8-32 x 3/8	80939 (4)

KIT-Locktite	23488-B
UNIVERSAL CARRYING CASE	A-68776
KIT-filter	A-24268
KIT-guide bar plate, 5/16	A-24275
KIT-guide bar plate, 3/8	A-24330
KIT-ignition (Phelon)	A-24272
KIT-ignition (Wico)	A-24271
KIT-starter rope	A-24266
REEL-starting rope (250 ft.)	57084-1

SUPER XL AUTOMATIC

Part No.	Description	Qty.	Part No.	Description	Qty.	Part No.	Description	Qty.	Part No.	Description	Qty.
0A1-10513	Sprocket	1	58823	Washer-Inner	1	A-09429	Noti-choke	1	67002	Cover-pump	1
22820-1	Collar-bearing	1	58847	Insert	1	58857	Rotor-magneto	1	67003	Starter-throttle	1
22828	Pliers	1	58851	Washer	2	58859	Box-breaker	1	67004	Needle-idle	1
A-23137	Jack-screw	1	58855	Throttle-trigger	1	58860	Coil	1	67005	Spool	1
23153-2	Shaft	1	58874	Coil	1	A-58861	Point Set	1	67006	Spring-throttle	1
A-23422	Wrench-insert	1	58875-A	Box-breaker	1	58862	Condenser-w/olamp	1	67007	Throttle shaft	1
23428-B	Kit-Loaffle	1	A-58814	Point Set	1	58863	Clip-coil retaining	1	67008	Gasket-pump	1
23528	Wrench	1	58916	Dry-rope	1	58904	Cover-breaker box	1	67011	Needle	1
23560	Spray Gun-white	1	58921-4	Pin-throttle	1	58905	Gasket-cover	1	67019	Gasket Set	1
23750	Plug-conn. rod	1	58923	Washer-water	1	58906	Spring-cover (oil)	1	67020	Kit-rotor	1
23767	Plug-bearing	1	A-58904	Blow Group	1	58901-B	Stud	1	A-67000	Kit-hub & drum	1
23768	Plug-installation	1	58905	Bearing	1	A-58905-A	Body-muffler	1	67177	Bushing-rod	1
23759	Sleeve-crankcase	1	58903	Screw-hex	3	58925	Seal-felt	1	67476	Stud-guide bar	2
23800	Sleeve-crankcase	1	58905	Lead	1	A-58925-B	Drivecap	1	67478	Inert-drivead	2
23819	Plug-needle	1	58974	Barrel	1	60051	Ball-choke friction	1	67600	Plate-inner	1
A-23841-A	Wrench-insert	1	58975	Cover-pump	1	60034	Spring-clutch	3	67619	Plate-outer	1
23843	Sleeve-drivecase	1	58977	Pin-faloyam	1	60031	Cover-clutch	1	67588-1A	Pin-bar adj.	1
23844	Sleeve-drivecase	1	58978	Gasket	1	60052	Shoe-clutch	3	67634	Hook-throttle rod	1
23845	Plug-drivecase	1	58979	Cover-drivecase	1	60053-1	Plate-back clutch	1	A-67640	Throttle Handle	1
23846-A	Anvil	1	58980-R	Diaphragm	1	A-60040	Suppressor-noise	1	67600	Gasket Set	1
23846-A	Shaft	1	60041	Gasket	1	60045	Screw-pin	1	67609	Kit-repair	1
A-23854	Wrench-spanner	1	60042	Clip-throttle	1	A-60046	Cap-muffler	1	67640	Grommet	1
A-23857-B	Wrench-conn. rod	1	60043	Shutter-choke	1	60047	Condenser	1	67619	Label-chain	1
A-23849	Plug-platun pin	1	60044	Needle-idle adj.	1	60048	Boost-reed valve	1	68133	Line-fuel	1
A-23860	Puller	1	58980	Needle-main adj.	1	60049-A	Retainer-reed valve	1	680230	Sprocket	1
24101	Spray Gun-blue	1	60048	Diaphragm-main	1	60050	Felt	1	68279	Grommet	1
24178	Driver	1	58990	Choke Shaft	1	60052-A	Screw-idle	1	A-68303	Carburetor	1
A-24228	Kit-starter rope	1	60041	Plug-Walob	1	60049	Plug	1	A-68303	Tank-fuel, oil	1
A-24208	Kit-Riser	1	60042	Screw	1	60050	Plug	1	A-68407	Carburetor	1
A-24271	Kit-ignition	1	60044	Plug-Walob	1	A-60051	Exchanger-heat	1	A-68748	Muffler	1
A-24272	Kit-ignition	1	A-60011	Valve-chock	1	A-60054	Throttle	1	A-68776	Case-carrying	1
A-24275	Kit-guide bar	1	A-60031	Lead-ground	1	A-60048	Sprocket & Drum	1	68981	Gasket	1
A-24280	Kit-guide bar	1	A-60043	Kit-bumper	1	60055	Gasket	1	72084-A1	Nut-hex	1
24455	Lanquer-"170"blue	1	59050	Ball	1	60055	Bracket-drivecase	1	72085-A	Plate-on-off	1
25056	Gasket	1	60064	Bushing-pin	1	60077	Screw-hex	3	72311	Bearing-needle	1
25050	Throttle Shutter	1	60067	Drive Stud	1	A-60421	Handle Bar	1	72075	Spring	2
25051	Shaft	2	60074	"O" Ring-shaft	1	A-60422	Kit-handle bar	1	72264	Spring	1
25527	Ball-choke friction	1	A-58213	Cover-handle	1	A-60434-A	Kit-noise suppressor	1	74384	"O" Ring	1
26008	Cutter Pin	1	A-58251	Filter-fuel	1	A-60477	Rod-connecting	1	75078	Key-rotor	1
26028	Washer-point	1	60253-1	Filter-felt	1	A-60488	Roller-needle	1	75190	Ring-retaining	1
26097	Plug	1	58274	Gasket-sprocket	1	60488	Crankshaft	1	76413	Spring-cover	1
30361	Screw Group	1	60283	Spring-plunger	1	A-60600	Spark Arrestor	1	76421	Screw Group	1
A-33055	Terminal	1	60283-1	Tube-oil line	1	60647-B	Spark Plug	1	FASTENING PARTS		
A-55289-A	Filter	1	58436	Piston Ring	2	60652	Element-air filter	1	80248	8-32 x 3/4	3
55584	Race-inner	1	60480	Spring-throttle	1	A-60608	Clutch & Cover	1	80284	4-40 x 3/16	2
55759	Spring-inlet	1	A-59488-C	Plate & Pin	1	A-60717-A	Cap-filler oil	1	80275	8-32 x 1/8	4
55871	Stud	4	59500	Barren-channel	1	60738	Valve-vent	2	80428	1/4-20 x 1	1
58977	Screw-coil clip	1	59503	Gasket	1	60739	Clip-coil retaining	1	80513	8 x 3/2	25
58982	Nut-terminal	1	A-59552	Sprocket & Drum	1	60739-2	Cover-look	1	80541	8-32 x 1/2	2
58987	Gasket	1	A-59555	Sprocket & Drum	1	60048-A	Lock-spring	1	80650	8-32 x 1/2	2
57084-1	Reel-260 feet	1	59822	Clamp-condenser	1	60090	Screw-coil clip	3	80091	4-40 x 1/4	4
67289-1	Bulb	2	58641-1	Bracket	1	60102-A	Screw-conn.	1	80648	10-32 x 1/2	1
A-57950-3	Switch-w/nut	1	58651-6	Bracket	1	60124	Bearing-needle	1	80676	12-24 x 5/8	1
57949	Screw Group	1	58638-A	Shield-inner	1	60321	Ring	1	80821	12-24 x 1/2	1
57940	Screw Group	1	58639-A	Shield-outer	1	60324	Cover-diaphragm	1	80825	10-32 x 9/16	2
57918	Ring-retaining	1	58649-4A	Cover	1	60327	Choke Shaft Assembly	1	80884	12-24 x 1	1
A-57884-10	Plunger	1	58674	Line-oil	1	60328	Butler	1	80887	12-24 x 3/4	6
58120-8	Bearing-ball	1	58675	Worm	1	60329	Needle-inlet	1	80881	12-24 x 7/8	5
58208-A	Seal	1	58678-B	Valve-reed	4	60331	Gasket-diaphragm	1	80889	12-24 x 9/16	4
58218-A	Ring-retaining	2	58904	Screw	2	60333	Diaphragm-fuel pump	1	80918	4-40 x 1/4	2
58228	Gasket	1	60703	Washer-lock	2	60425	Diaphragm-metering	1	80021	10-32 x 2-11/16	2
58262	Grommet	1	60710	Gasket	1	60426	Spring-needle adj.	2	80938	8-32 x 3/8	4
60292-1	Gasket	1	58710	Lever	1	60428	Spring-choke friction	1	80943	12-24 x 1/2	1
58405	Spring-lock	1	60717	Needle-inlet	1	60429	Barren-fuel inlet	1	81005-8	Nut-1/4-28	4
58409	Ring-retaining	1	58718	Spacer	1	60444	Pin-metering lever	1	81068	Nut-12-24	2
A-58688-A	Seal	2	58732	Gasket-carb.	1	60446	Lever-metering	1	81089-2	Nut-3/8-10	2
58700-B1	Cylinder	1	58730	Gasket	1	60400	Bushing-spring lock	1	81108	Nut-1/4-20	1
58734	Bearing	1	58760	Seal-felt	1	60443	Bushing-starter post	1	81090-X	Nut-10-32	4
58760-2	Cover-drivecase	1	58789	Rod-throttle	1	A-60446	Pulley-starter	1	81117	Nut-5/16-24	1
58757-B	Flaw-shoulder	2	58765	"O" Ring	2	A-60458	Howling-fan	1	81122	Nut-1/8-34	1
58756	Pawl-starter	2	60770	Grommet	2	60488	Screw-metering	1	80902	Washer-5/16	1
58768	Spring-pawl	2	58771	Gasket-cylinder	1	60489	Screw-assembly	4	80008-I	Washer-1/4	0
58765	Washer-retaining	1	A-58780	Handle Bar	1	60492	Screw-valve	2	80009	Washer-1/4	4
58784-A	Spring-recoll	1	60784	Grommet	1	60494	Screw	4	80021	Washer-#0	4
58780	Screw-starter	1	58788-2	Plug	1	60483	Ring-retaining	2	80040	Washer-#10	2
58773-5	Cover-air filter	1	58780	Gasket	1	60484	Cap-check valve	1	81065	Washer-#12	2
A-58788-D	Crankcase	1	A-58804	Filter-oil	1	A-60272	Nut-cover mounting	1	80070	Washer-3/8	1
62808	Rope-starter	1	A-58800	Line-oil	1	A-60283-B	Cap-fuel filter	1	80050	Washer-6/16	1
62809	Rotor-magneto	1	A-58800-A	Pump-auto. oiler	1	60385	Kit-eyale	1	80031	Pin-conn	1
58810	Gasket-cover	1	A-58818	Valve-check	1	65740	Race-inner	1	66324	Pip-conn	1
58811	Cover-ltr. box	1	A-58819	Line-oil	1	A-65858	Kit-oil pump	1			
A-58828	Filter-oil	1	A-58822-A	Bracket	1	A-65900	Hub & Drum	1			

Debates New Parts

Homelite Division of Textron Inc.
P.O. Box 7047
14401 Carowinds Boulevard
Charlotte, N.C. 28217

K1 1017 TK

HOMELITE **TEXTRON**

Homelite Division of Textron Inc.