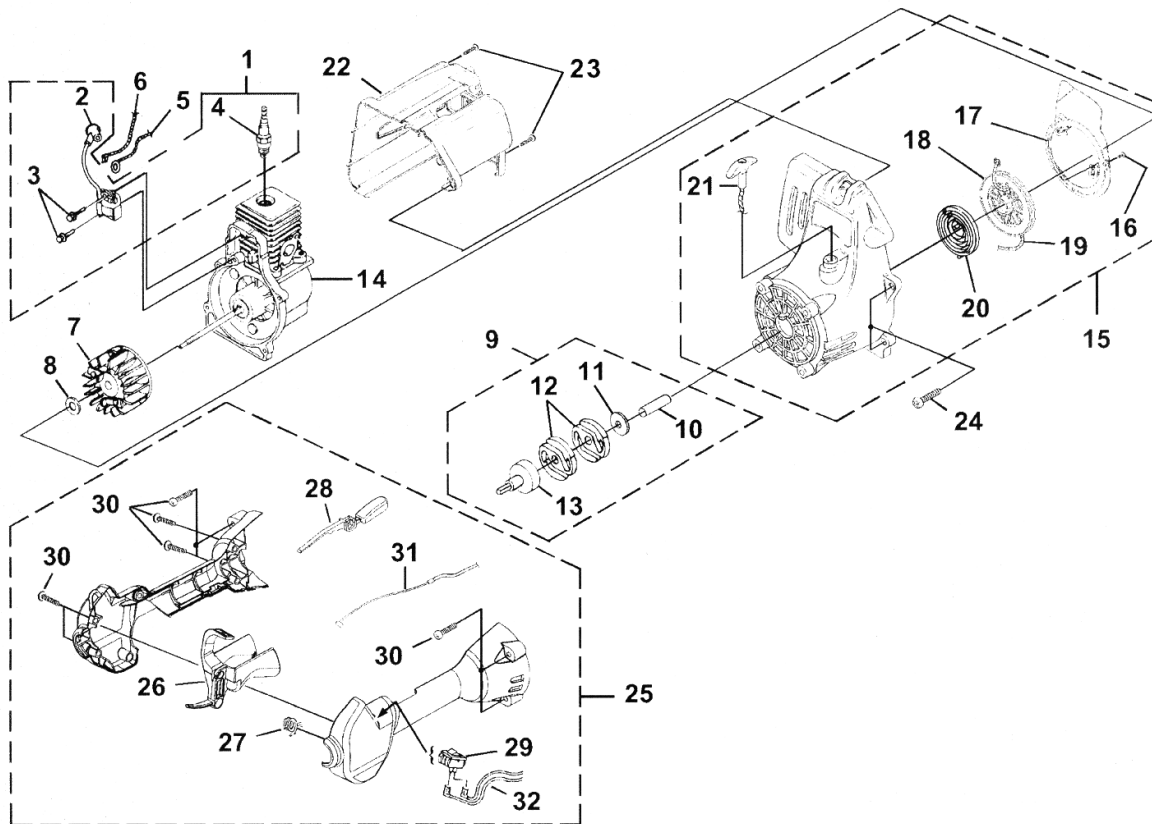
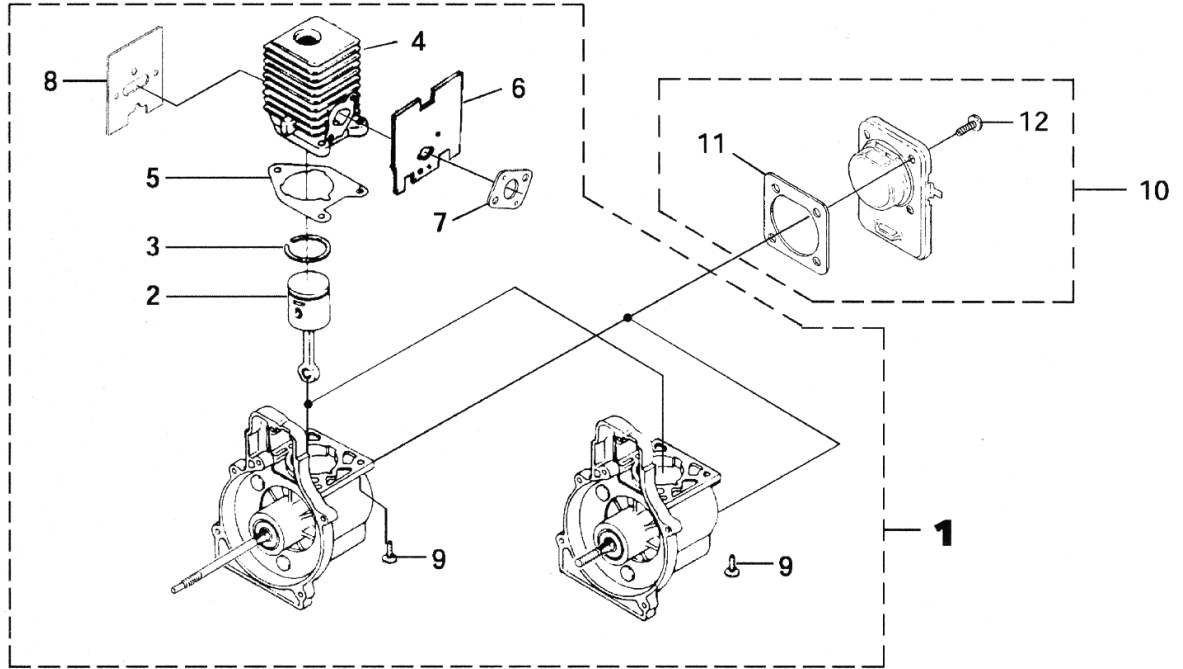


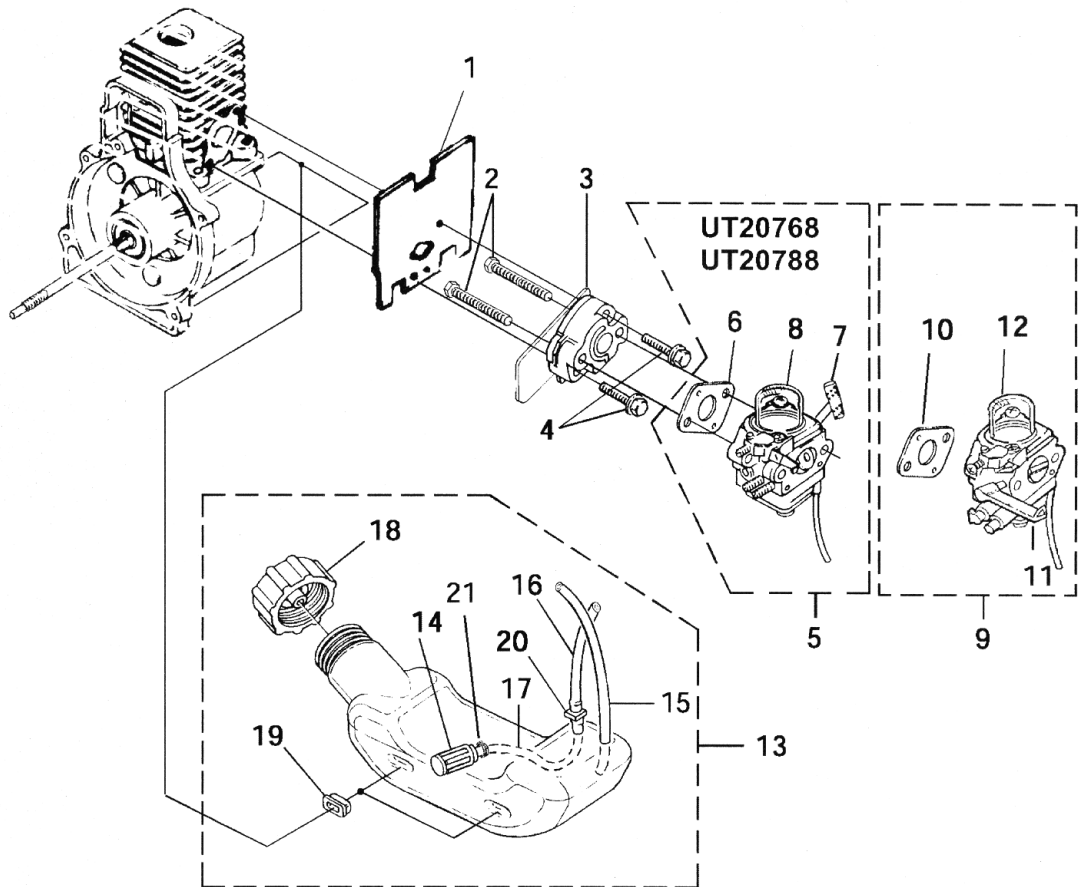
## Ignition - Rotor - Starter - Clutch



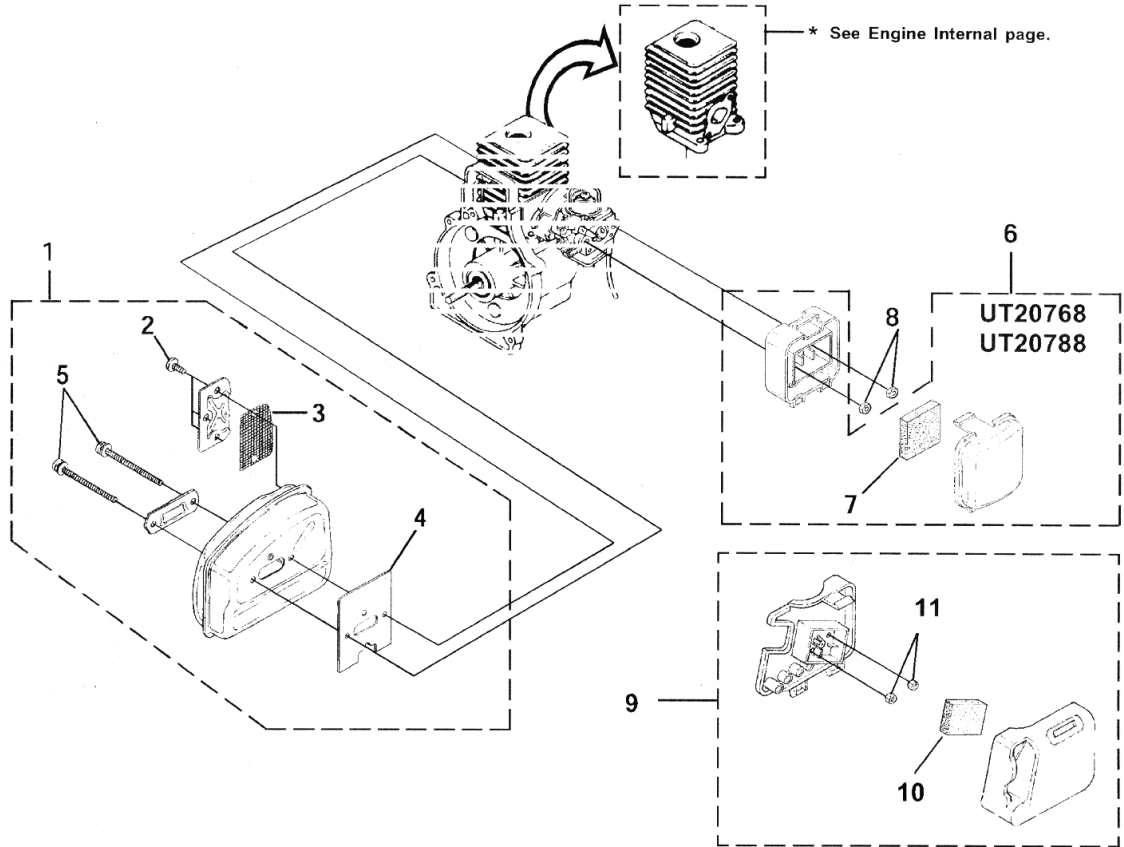
## Engine Internal



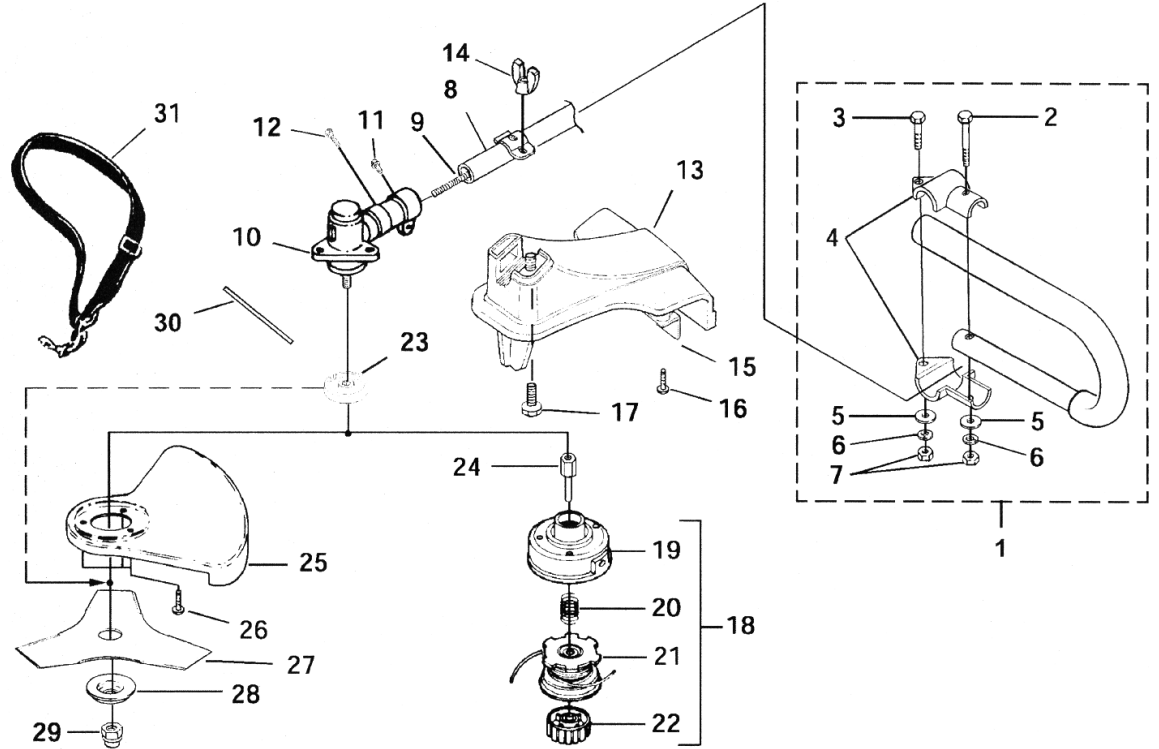
## Carburetor - Fuel Tank



## Muffler - Air Cleaner



## Shaft - Spool & String - Grass Deflector



**RECOMMENDED RETAIL PRICE  
W/O TAX \* EXW DUISBURG / PARIS**

**Homelite®**

**F 3040 STRING TRIMMER UT 15176**

**carburetor - fuel tank**

Position	Article-no	Description	Qty	Price w/o tax
1	BM_UP04308	GASKET-HEAT DAM	1	€ 0,53
2	BM_UP04131	SCREW-MACHINE (10-24 X 2 1/4")	2	€ 1,87
3	BM_UP04348	HEAT DAM	1	€ 6,84
4	BM_UP04140	SCREW-SEMS (10-24 X 1") TORQUE SPECS 35-45 IN/LBS, 4.0-5.1 NM. REQUIRED LOCTITE RED 262	2	€ 0,37
5	BM_UP00608	CARBURETOR KIT (UT20768, UT20788) INCLUDES ITEMS 6-8	1	€ 31,99
6	BM_UP03916	GASKET-CARBURETOR	1	€ 0,39
7	BM_UP04278	LEVER-CHOKE (ZAMA)	1	€ 6,99
8	BM_UP04803	BULB-PRIMER	1	€ 6,38
9	BM_UP04742	CARBURETOR KIT (NON CLUTCH) INCLUDES ITEMS 10-12	1	€ 39,35
9	BM_UP05085	CARBURETOR KIT (CLUTCH)	1	€ 26,72
10	BM_UP03916	GASKET-CARBURETOR	1	€ 0,39
11	BM_UP04740	LEVER-CHOKE	1	€ 5,24
12	BM_UP04803	BULB-PRIMER	1	€ 6,38
13	BM_UP00020	FUEL TANK ASSY. INCLUDES ITEMS 14-21	1	€ 18,31
14	BM_UP03871	FILTER-FUEL	1	€ 2,25
15	BM_UP04293	TUBING-RUBBER	1	€ 1,69
16	BM_UP04292	TUBING-RUBBER	1	€ 1,21
17	BM_UP04715	TUBING-RUBBER	1	€ 1,41
18	BM_UP00106	FUEL CAP	1	€ 3,75
19	BM_UP03501	BUMPER-RUBBER	3	€ 5,51
20	BM_UP03831	FITTING-INLINE	1	€ 2,25
21	BM_UP03913	CLAMP	1	€ 1,87

**engine internal**

Position	Article-no	Description	Qty	Price w/o tax
1	BM_UP03117	SHORT BLOCK (NON-CLUTCH) INCLUDES ITEMS 2-9	1	€ 96,10
1	BM_UP03122	SHORT BLOCK (CLUTCH)	1	€ 79,63
2	BM_UP00768A	PISTON & ROD ASSY. INCLUDES ITEM 3	1	€ 20,13
3	BM_UP03838	RING-PISTON	1	€ 2,03
4	BM_UP07145	CYLINDER ASSY. INCLUDES ITEM 5-8	1	€ 33,44
5	BM_UP03857	GASKET-CYLINDER	1	€ 1,00
6	BM_UP04308	GASKET-HEAT DAM	1	€ 0,53
7	BM_UP03916	GASKET-CARBURETOR	1	€ 0,39
8	BM_UP04710	GASKET-MUFFLER	1	€ 0,87
9	BM_UP04345	SCREW-SEMS (12-24 X 3/4") TORQUE SPECS 55-65 IN/LBS, 6.2-7.3 NM. REQUIRED LOCTITE RED 262	3	€ 0,66
10	BM_UP00019	CRANKCASE COVER ASSEMBLY INCLUDES ITEMS 11-12	1	€ 3,41
11	BM_UP04335	GASKET-CRANKCASE COVER (ALSO INCLUDED W/SHORT BLOCK)	1	€ 0,79
12	BM_UP04295	SCREW-SEMS (10-24 X 1/2") TORQUE SPECS 35-45 IN/LBS, 4.0-5.1 NM. REQUIRED LOCTITE RED 262	4	€ 0,56

**ignition - rotor - starter - clutch**

Position	Article-no	Description	Qty	Price w/o tax
1	BM_UP03858	IGNITION KIT INCLUDES ITEMS 2-4	1	€ 56,21
2	BM_UP03868	TERMINAL & COVER TORQUE SPECS 30-40 IN/LBS, 3.4-4.5 NM. REQUIRED LOCTITE BLUE 242	1	€ 3,65
3	BM_UP03896	SCREW-TAPTITE (8-32 X 1")	2	€ 1,03
4	BM_UP03883	SPARK PLUG TORQUE SPECS 120-180 IN/LBS, 13.6-20.3 NM.	1	€ 4,12
5	BM_UP04537	LEAD-ELECTRICAL	1	€ 2,25
6	BM_UP04536	LEAD-ELECTRICAL	1	€ 2,25
7	BM_UP03009A	ROTOR KIT	1	€ 16,32
8	BM_UP04241	WASHER-FLAT	1	€ 1,21
9	BM_UP00034	CLUTCH AND DRUM KIT INCLUDES ITEMS 10-13	1	€ 19,90
10	BM_UP04118	SPACER	1	€ 1,87
11	BM_UP04275	WASHER-FLAT	1	€ 1,21
12	BM_UP04103	CLUTCH	2	€ 3,09
13	BM_UP04104	CONNECTOR AND DRUM	1	€ 10,59
14	BM_UP03122	SHORT BLOCK (SEE "ENGINE INTERNAL" ILLUSTRATION AND PARTS LIST)	1	€ 79,63
15	BM_UP00014	STARTER ASSEMBLY INCLUDES ITEMS 16-21	1	€ 24,25
15	BM_UP05132	STARTER ASSEMBLY (B25S) INCLUDES ITEMS 16-21	1	€ 44,13
16	BM_UP06910	SCREW-THREAD FORM (8-16 X 1/2") TORQUE SPECS 10-20 IN/LBS, 1.1-2.3 NM.	3	€ 2,62

Position	Article-no	Description	Qty	Price w/o tax
17	BM_UP03013	BAFFLE-AIR	1	€ 4,85
18	BM_UP04349	PULLEY-STARTER	1	€ 3,00
19	BM_UP03912	ROPE-STARTER (42")	1	€ 2,62
20	BM_UP03917	SPRING & CONTAINER	1	€ 5,81
21	BM_UP04276	GRIP-STARTER (YELLOW)	1	€ 2,81
22	BM_UP03518	HOUSING-REAR KIT INCLUDES ITEM 23	1	€ 9,29
23	BM_UP03900	SCREW-PLASTITE (10-14 X 3/4") TORQUE SPECS 30-50 IN/LBS, 3.4-5.6 NM.	2	€ 2,25
24	BM_UP03406	SCREW-TAPTITE (10-24 X 3/4") TORQUE SPECS 30-40 IN/LBS, 3.4-4.5 NM.	4	€ 0,75
25	BM_UP03114	CONTROL HANDLE ASSY. INCLUDES ITEMS 26-32	1	€ 21,57
26	BM_UP03207	TRIGGER-THROTTLE INCLUDES ITEM 27	1	€ 4,54
27	BM_UP03210	SPRING	1	€ 2,47
28	BM_UP03173	THROTTLE INTERLOCK	1	€ 5,97
29	BM_UP04197	SWITCH	1	€ 2,29
30	BM_UP04247	SCREW-TAPTITE (10-14 X 1") TORQUE SPECS 30-50 IN/LBS, 3.4-5.6 NM.	9	€ 1,87
31	BM_UP03172	CABLE-THROTTLE	1	€ 3,93
32	BM_UP03174	LEAD-ELECTRICAL	1	€ 4,54

### muffler - air cleaner

Position	Article-no	Description	Qty	Price w/o tax
1	BM_UP04634	MUFFLER ASSEMBLY INCLUDES ITEMS 2-5	1	€ 22,49
2	BM_UP04248	SCREW, TAPTITE - (8-32 X 3/8") TORQUE SPECS 25-35 IN/LBS, 2.8-4.0 NM.	3	€ 2,10
3	BM_UP04629	SCREEN-SPARK	1	€ 2,50
4	BM_UP04710	GASKET-MUFFLER	1	€ 0,87
5	BM_UP04258	SCREW, TRUSS HD. - (10-24 X 2.188) TORQUE SPECS 50-60 IN/LBS, 5.6-6.8 NM.	2	€ 2,44
6	BM_UP00022	AIR FILTER KIT (UT20768, UT20788) INCLUDES ITEMS 7-8	1	€ 2,01
7	BM_D98760B	FILTER-AIR	1	€ 3,56
8	BM_UP03885	NUT-HEX (10-24) TORQUE SPECS 30-40 IN/LBS, 3.4-4.5 NM.	2	€ 2,25
9	BM_UP05084A	AIR FILTER KIT INCLUDES ITEMS 10-11	1	€ 11,66
10	BM_D98760B	FILTER-AIR	1	€ 3,56
11	BM_UP03885	NUT-HEX (10-24) TORQUE SPECS 30-40 IN/LBS, 3.4-4.5 NM.	2	€ 2,25

### shaft - spool & string - grass deflector

Position	Article-no	Description	Qty	Price w/o tax
1	BM_UP06534	HANDLE ("J") INCLUDES ITEMS 2-7	1	€ 16,87
2	BM_UP04154	SCREW-HEX HD. (1/4-20 X 1 1/2")	1	€ 0,60
3	BM_UP04158	SCREW-HEX HD. (1/4-20 X 1")	1	€ 0,21
4	BM_UP04105	CLAMP-HANDLE BAR	2	€ 1,22
5	BM_UP04251	WASHER-FLAT (1/4")	2	€ 1,40
6	BM_UP03409	WASHER-LOCK (1/4")	2	€ 2,93
7	BM_UP03399	NUT-HEX (1/4-20) TORQUE SPECS 90-100 IN/LBS, 10.2-11.3 NM.	2	€ 0,21
8	BM_UP05071	DRIVESHAFT HOUSING INCLUDES ITEM 9	1	€ 47,68
9	BM_UP05072	FLEXSHAFT	1	€ 6,03
10	BM_UP06866	GEAR HEAD INCLUDES ITEMS 11-12	1	€ 66,38
11	BM_UP05572	SCREW, CAP HD. (1/4-20 X 7/8") TORQUE SPECS 15-20 IN/LBS, 1.7-2.3 NM.	5	€ 2,34
12	BM_UP04254	SCREW-HEX HD. (10-24 X 1/2") TORQUE SPECS 40-50 IN/LBS, 4.5-5.6 NM.	2	€ 0,60
13	BM_UP05086	GRASS DEFLECTOR KIT INCLUDES ITEMS 14-17	1	€ 18,29
14	BM_UP04893	WING NUT	1	€ 1,97
15	BM_UP04890	BLADE-CUT-OFF INCLUDES ITEM 16	1	€ 1,12
16	BM_UP03898	SCREW, THREAD FORM. (10-24 X 3/4") TORQUE SPECS 30-50 IN/LBS, 3.4-5.6 NM.	2	€ 0,21
17	BM_UP04892	SCREW-SQUARE HEAD	1	€ 2,03
18	BM_UP04650A	STRINGHEAD-COMplete (.095") INCLUDES ITEMS 19-22	1	€ 21,04
19	BM_UP06567	HOUSING & EYELET (DUAL LINE)	1	€ 14,34
20	BM_B06713	SPRING-COMPRESSION	1	€ 1,44
21	BM_UP00147	SPOOL & STRING (.095")	1	€ 8,94
22	BM_UP00104	RETAINER-SPOOL (L.H. THREAD, RED)	1	€ 3,50
23	BM_UP04126	WASHER-FLANGED	1	€ 4,44
24	BM_UP04269	ADAPTER-SHAFT TORQUE SPECS 100-120 IN/LBS, 11.3-13.6 NM.	1	€ 6,37
25	BM_UP05070	BLADE GUARD INCLUDES ITEM 26	1	€ 13,31
26	BM_UP04254	SCREW TORQUE SPECS 15-20 IN/LBS, 1.7-2.3 NM.	3	€ 0,60
27	BM_UP06729	BLADE-TRI-ARC(TM)	1	€ 19,88
28	BM_UP04129	WASHER-CUPPED (LOWER)	1	€ 2,38
29	BM_UP04127	NUT-HEX (L.H.) TORQUE SPECS 100-120 IN/LBS, 11.3-13.6 NM.	1	€ 2,50
30	BM_UP04100	TOOL-HOLDING PIN	1	€ 1,87
31	BM_UP00108	HARNES	1	€ 11,32

**PRICES ARE SUBJECT TO CHANGE WITHOUT NOTICE**

RO\* ... ON REQUEST

NLA\* ... NO LONGER AVAILABLE

TBO\* ... TO BE OBSOLETE