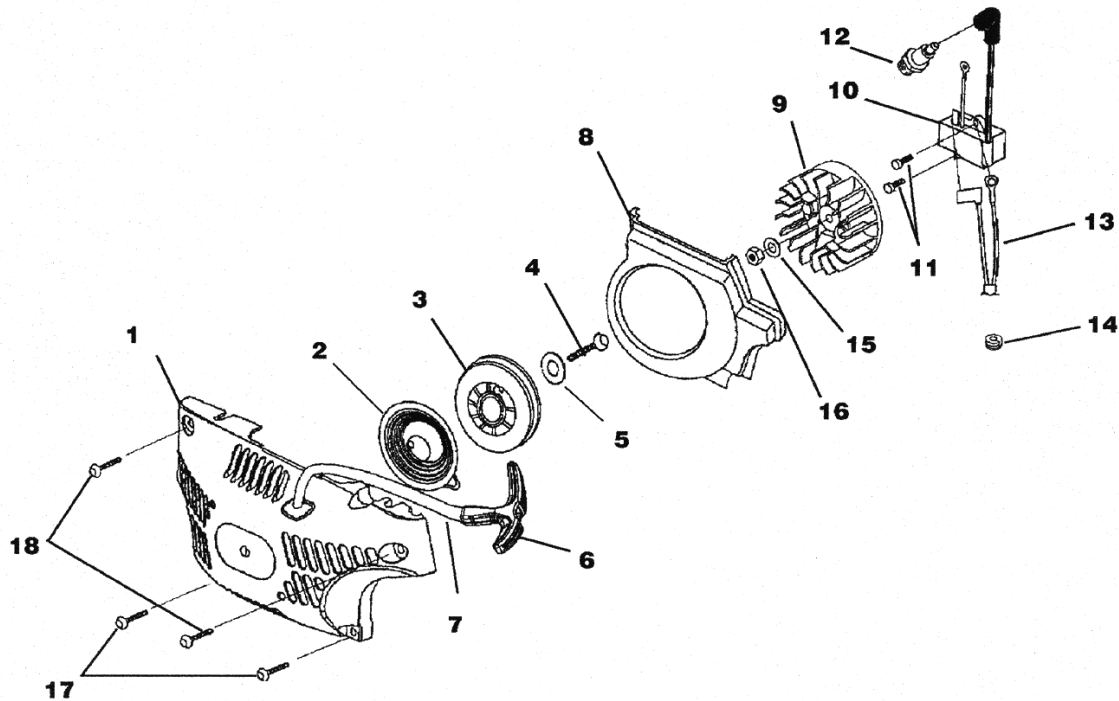
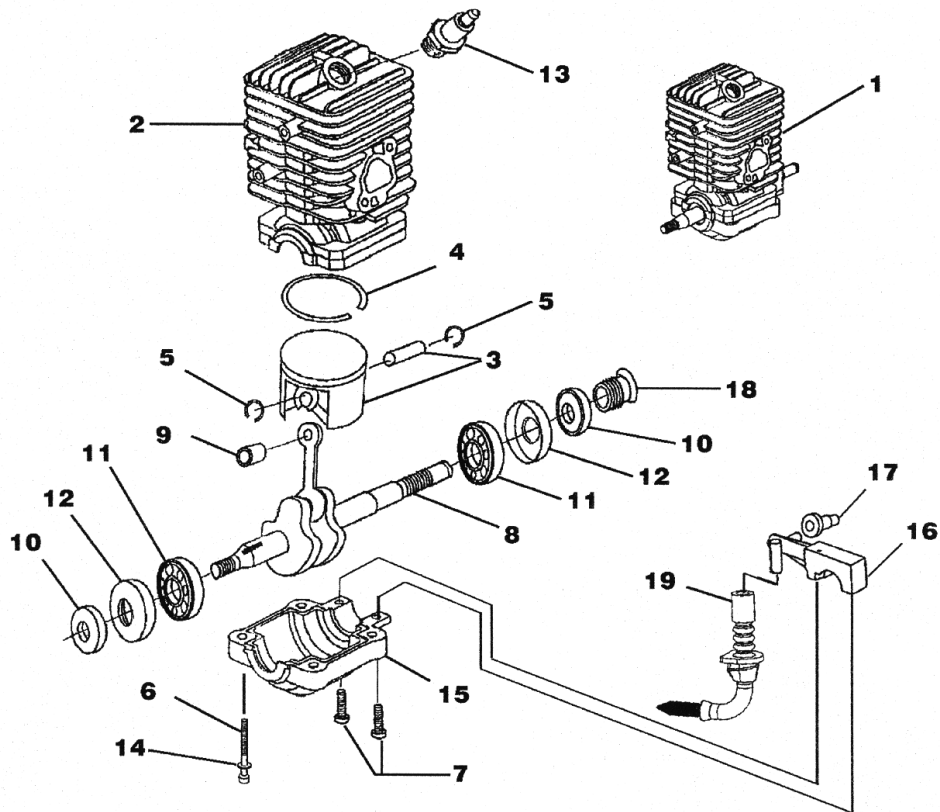


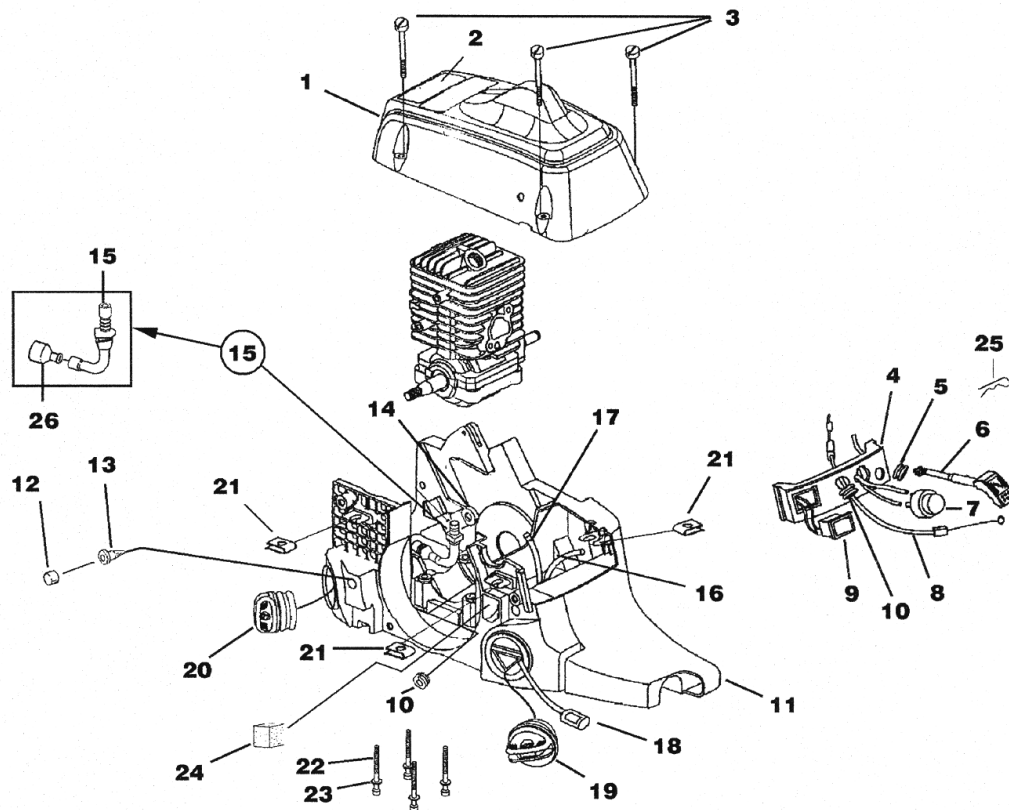
#### Starter - Ignition



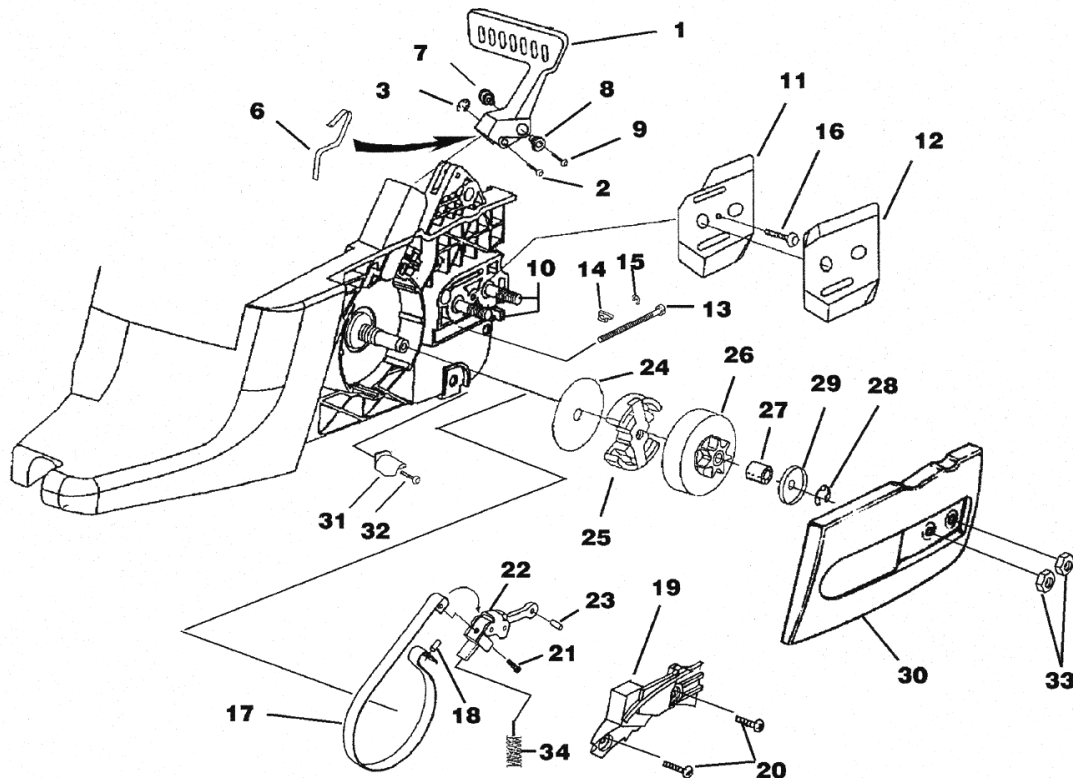
## Engine Internal - Oil Pump



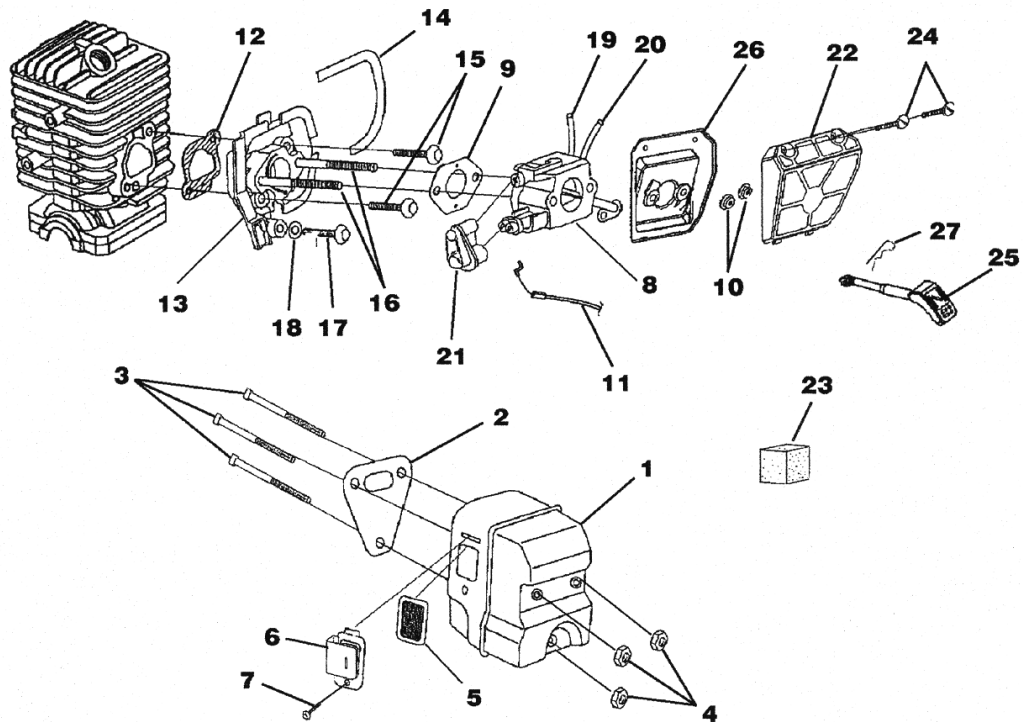
#### Engine Housing - Fuel Tank - Oil Tank



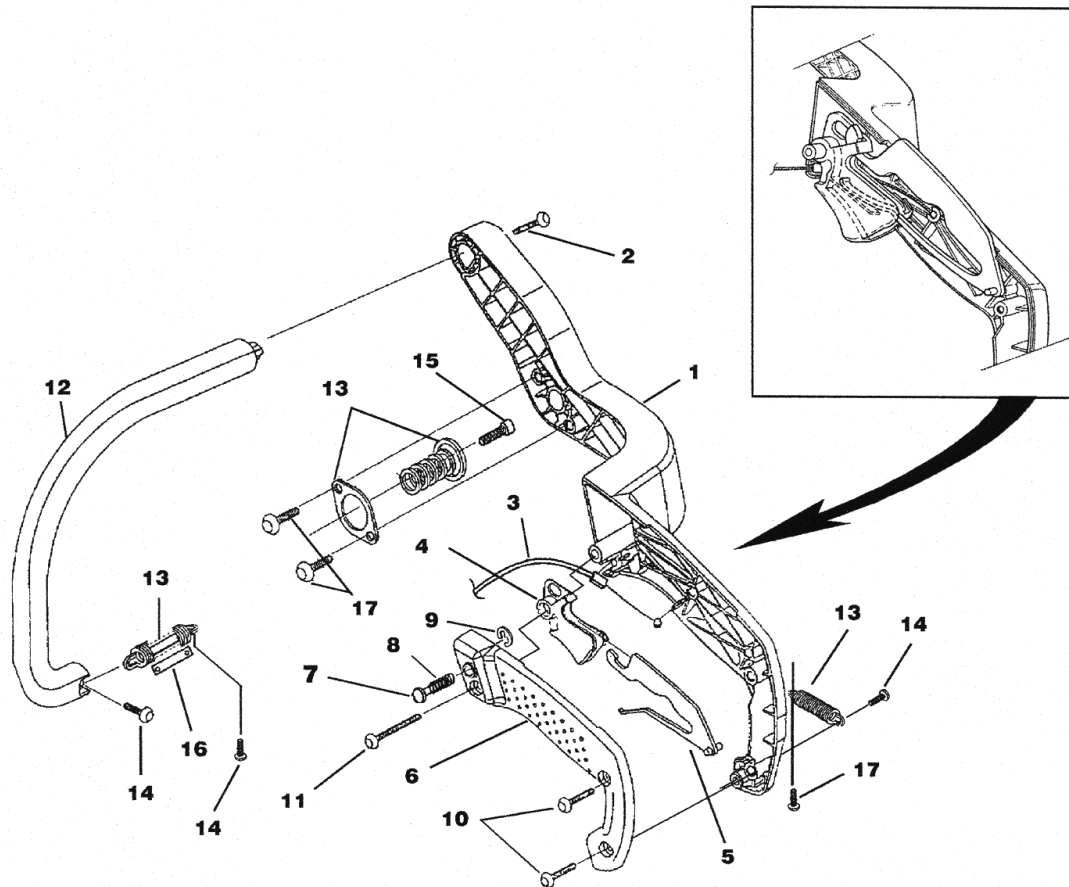
#### Clutch - Chain Brake - Drive Case Cover



#### Carburetor - Muffler - Air Filter



#### Handles



**RECOMMENDED RETAIL PRICE  
W/O TAX \* EXW DUISBURG / PARIS**

**Homelite®**

**i 3350 b CHAIN SAW UT 10868**

**carburetor - muffler - air filter**

| Position | Article-no  | Description  | Qty |  |
|----------|-------------|--|-----|--|
| 1        | BM_UP06752  | MUFFLER KIT (33/38CC); INCLUDES ITEMS 2-7                                    | 1   |  |
| 1        | BM_UP00126  | MUFFLER KIT (45CC)   | 1   |  |
| 2        | BM_UP04183  | MUFFLER GASKET   | 1   |  |
| 3        | BM_UP04049  | SCREW-SQUARE HD.   | 3   |  |
| 4        | BM_UP04059  | NUT-LOCKING HEX (10-32) TORQUE SPECS 50-60 IN/LBS; 5.6-6.7 NM                | 3   |  |
| 5        | BM_UP04203  | SCREEN, SPARK  | 1   |  |
| 6        | BM_UP04204  | DEFLECTOR, MUFFLER (33/38CC)   | 1   |  |
| 6        | BM_UP04169  | DEFLECTOR, MUFFLER (45CC)  | 1   |  |
| 7        | BM_UP04244  | SCREW  | 1   |  |
| 8        | BM_UP06737A | CARBURETOR ASSY (33 & 38CC); INCLUDES ITEMS 9-10                             | 1   |  |
| 8        | BM_UP00125  | CARBURETOR ASSY (45CC)   | 1   |  |
| 8        | BM_A09160   | CARBURETOR ASSY (INT'L 33CC, INT'L 38CC)                                     | 1   |  |
| 8        | BM_UP00499  | CARBURETOR ASSY (INT'L 41CC, INT'L 45CC)                                     | 1   |  |
| 9        | BM_UP04094  | CARBURETOR GASKET  | 1   |  |
| 10       | BM_UP04217  | FLANGE NUT (10-24) TORQUE SPECS 30-40 IN/LBS; 3.4-4.5 NM                     | 2   |  |
| 11       | BM_UP04218  | THROTTLE CABLE   | 1   |  |
| 12       | BM_UP04184  | GASKET, HEAT DAM   | 1   |  |
| 13       | BM_UP04173  | HEAT DAM   | 1   |  |
| 14       | BM_UP04191  | SEAL, HEAT DAM   | 1   |  |
| 15       | BM_UP04084  | SCREW, TRUSS HD. TAPITE (10-24 X 7/8") TORQUE SPECS 45-55 IN/LBS; 5.0-6.2 NM | 2   |  |
| 16       | BM_UP04189  | SCREW, CARBURETOR  | 2   |  |
| 17       | BM_UP03897  | SCREW, THREAD FORM (10-14 X 1/2") TORQUE SPECS 30-40 IN/LBS; 3.4-4.5 NM      | 1   |  |
| 18       | BM_UP03867  | WASHER, RETAINING  | 1   |  |
| 19       | BM_UP04211  | FUEL LINE (TANK TO CARBURETOR 8 1/2")  | 1   |  |
| 20       | BM_UP04209  | FUEL LINE (CARBURETOR TO PURGE BULB 4")                                      | 1   |  |
| 21       | BM_UP04171  | CARBURETOR GROMMET   | 1   |  |
| X        | BM_UP06753  | AIR FILTER KIT INCLUDES ITEMS 22-24  | 1   |  |
| 22       | BM_UP04533  | AIR FILTER COVER   | 1   |  |
| 23       | BM_UP04208  | PRE FILTER (IN ENGINE HOUSING)   | 1   |  |
| 24       | BM_UP04235  | SCREW-SLOTTED PAN HD. (8-16 X 5/8") TORQUE SPECS 15-20 IN/LBS; 1.7-2.3 NM    | 2   |  |
| 25       | BM_UP04213  | ROD, CHOKE   | 1   |  |
| 26       | BM_UP04178  | AIR FILTER PLATE   | 1   |  |
| 27       | BM_UP04227  | SPRING CLIP (CHOKE ROD)  | 1   |  |

**clutch - chain brake - drive case cover**

| Position | Article-no | Description   | Qty |  |
|----------|------------|---|-----|--|
| 1        | BM_UP06568 | HAND GUARD KIT INCLUDES ITEMS 2-5   | 1   |  |
| 2        | BM_UP04214 | HAND GUARD ACTUATING PIN  | 1   |  |
| 3        | BM_UP04056 | RETAINING RING  | 1   |  |
| 4        | BM_UP04207 | HAND GUARD LINK (NON-CHAIN BRAKE UNITS-NOT SHOWN)                         | 1   |  |
| 5        | BM_UP04090 | ROLL PIN (NON-CHAIN BRAKE UNITS-NOT SHOWN)                                | 1   |  |
| 6        | BM_UP04224 | SPRING, HANDGUARD   | 1   |  |
| 7        | BM_UP04202 | PIVOT, L.H.   | 1   |  |
| 8        | BM_UP04201 | PIVOT, R.H.   | 1   |  |
| 9        | BM_UP04240 | SCREW, HEX SOCKET HD. (8-32 X 5/8") TORQUE SPECS 25-35 IN/LBS; 2.8-3.9 NM | 1   |  |
| 10       | BM_UP04180 | GUIDE BAR BOLT  | 2   |  |
| X        | BM_UP06966 | GUIDE BAR ADJUSTING KIT INCLUDES ITEMS 11-15                              | 1   |  |
| 11       | BM_UP04206 | PLATE, GUIDE BAR  | 1   |  |
| 12       | BM_UP04085 | PLATE, GUIDE BAR  | 1   |  |
| 13       | BM_UP04187 | SCREW, GUIDE BAR ADJUSTING  | 1   |  |
| 14       | BM_UP04186 | PIN, GUIDE BAR ADJUSTING  | 1   |  |
| 15       | BM_UP04056 | RING, RETAINING   | 1   |  |
| 16       | BM_UP04082 | SCREW, THREAD FORM (6-19 X 1/2") TORQUE SPECS 8-18 IN/LBS; 9-2.0 NM       | 1   |  |
| 17       | BM_A08680A | CHAIN BRAKE KIT INCLUDES ITEMS 18-21                                      | 1   |  |
| 18       | BM_UP04181 | PIN, ROLL   | 1   |  |
| 19       | BM_UP04309 | COVER, CHAIN BRAKE  | 1   |  |
| 20       | BM_UP04082 | SCREW, PAN HD. (6-19 X 1/2") TORQUE SPECS 10-20 IN/LBS; 1.1-2.3 NM        | 2   |  |

| Position | Article-no | Description   | Qty |  |
|----------|------------|---|-----|--|
| 21       | BM_UP04239 | SCREW, PAN HD. (8-16 X .320) TORQUE SPECS 20-30 IN/LBS; 2.3-3.4 NM      | 1   |  |
| 22       | BM_UP04223 | CHAIN BRAKE LINK  | 1   |  |
| 23       | BM_UP04090 | PIN, ROLL   | 1   |  |
| 24       | BM_UP04182 | THRUST WASHER   | 1   |  |
| 25       | BM_UP06727 | CLUTCH & HARDWARE TORQUE SPECS 130-180 IN/LBS; 14.7-20.3 NM             | 1   |  |
| 26       | BM_UP06967 | SPROCKET, DRUM (3/8 PITCH) INCLUDES ITEMS 27-28                         | 1   |  |
| 26       | BM_UP04560 | SPROCKET, DRUM (.325 PITCH) (I3850B & 45CC ONLY)                        | 1   |  |
| 27       | BM_UP04175 | BEARING, NEEDLE   | 1   |  |
| 28       | BM_UP04228 | RING, RETAINING   | 1   |  |
| 29       | BM_UP04179 | WASHER, CUPPED  | 1   |  |
| 30       | BM_UP06975 | DRIVE CASE COVER INCLUDES ITEMS 31-32                                   | 1   |  |
| 31       | BM_UP04088 | STOP, CHAIN   | 1   |  |
| 32       | BM_UP03900 | SCREW, THREAD FORM (10-14 X 3/4") TORQUE SPECS 30-50 IN/LBS; 3.4-5.6 NM | 1   |  |
| 33       | BM_UP04058 | NUT, HEX TORQUE SPECS HAND TIGHT  | 2   |  |
| 34       | BM_UP04032 | SPRING, COMPRESSION   | 1   |  |

## engine internal - oil pump

| Position | Article-no  | Description  | Qty |  |
|----------|-------------|--|-----|--|
| 1        | BM_UP03119  | SHORT BLOCK COMPLETE (33CC); INCLUDES ITEMS 2-12   | 1   |  |
| 1        | BM_UP04161  | SHORT BLOCK COMPLETE (38CC)  | 1   |  |
| 1        | BM_UP04168  | SHORT BLOCK COMPLETE (45CC)  | 1   |  |
| 2        | BM_A08666   | CYLINDER KIT (33CC)  | 1   |  |
| 2        | BM_A08667   | CYLINDER KIT (38CC)  | 1   |  |
| 2        | BM_UP00129  | CYLINDER KIT (45CC)  | 1   |  |
| X        | BM_UP04183  | GASKET, MUFFLER (NOT SHOWN)  | 1   |  |
| X        | BM_UP04184  | GASKET, HEAT DAM (NOT SHOWN)   | 1   |  |
| X        | BM_UP04094  | GASKET, CARBURETOR (NOT SHOWN)   | 1   |  |
| 3        | BM_UP06971  | PISTON & PIN (33CC); INCLUDES ITEMS 4-5  | 1   |  |
| 4        | BM_UP04177  | PISTON RING (33CC)   | 1   |  |
| 5        | BM_UP04051  | RING, RETAINING  | 2   |  |
| 3        | BM_UP06972  | PISTON & PIN (38CC); INCLUDES ITEMS 4-5  | 1   |  |
| 4        | BM_UP04190  | PISTON RING (38CC)   | 1   |  |
| 5        | BM_UP04051  | RING, RETAINING  | 2   |  |
| 3        | BM_UP00130  | PISTON & PIN (45CC); INCLUDES ITEMS 4-5  | 1   |  |
| 4        | BM_UP04231  | PISTON RING (45CC)   | 1   |  |
| 5        | BM_UP04051  | RING, RETAINING  | 2   |  |
| 6        | BM_UP04083  | SCREW, CAP-SOCKET HD. (10-24 X 2") TORQUE SPECS 65-75 IN/LBS; 7.3-8.5 NM; REQUIRED LOCTITE 262 RED | 4   |  |
| 7        | BM_UP03898  | SCREW, PAN HD., PLASTITE (8-16 X 5/8") TORQUE SPECS 15-20 IN/LBS; 1.7-2.3 NM                       | 2   |  |
| 8        | BM_UP03118  | CRANKSHAFT & ROD ASSY (33 & 38CC); INCLUDES ITEMS 9-12   | 1   |  |
| 8        | BM_UP04165A | CRANKSHAFT & ROD ASSY (45CC)   | 1   |  |
| 9        | BM_UP04174  | BEARING, NEEDLE INCLUDES ITEMS 10-12   | 1   |  |
| 10       | BM_UP04047  | SHAFT SEAL   | 2   |  |
| 11       | BM_UP04176  | BEARING & RUBBER CASE INCLUDES ITEM 12   | 2   |  |
| 12       | BM_UP04046  | RUBBER CASE  | 2   |  |
| 13       | BM_UP04093  | SPARK PLUG TORQUE SPECS 120-180 IN/LBS; 13.6-20.3 NM   | 1   |  |
| 14       | BM_UP04087  | WASHER   | 4   |  |
| 15       | BM_UP04172  | LOWER CRANKCASE (33 & 38CC)  | 1   |  |
| 15       | BM_UP04232  | LOWER CRANKCASE (45CC)   | 1   |  |
| 16       | BM_UP06602  | OIL PUMP KIT INCLUDES ITEMS 17-19  | 1   |  |
| 17       | BM_UP04185  | GROMMET, OIL OUTLET  | 1   |  |
| 18       | BM_UP04188  | LEFT HAND WORM   | 1   |  |
| 19       | BM_UP04048  | OIL INTAKE TUBE W/FILTER   | 1   |  |

## engine housing - fuel tank - oil tank

| Position | Article-no | Description   | Qty |  |
|----------|------------|---|-----|--|
| 1        | BM_A08692  | CYLINDER COVER KIT INCLUDES ITEMS 2-3                       | 1   |  |
| 2        | BM_UP04212 | SAFETY DECAL  | 1   |  |
| 3        | BM_UP04219 | SCREW-SLOTTED PAN HD. TORQUE SPECS 15-25 IN/LBS; 1.7-2.8 NM | 3   |  |
| 4        | BM_UP04193 | CONTROL PANEL   | 1   |  |
| 5        | BM_UP04052 | GROMMET   | 1   |  |
| 6        | BM_UP04213 | ROD, CHOKE  | 1   |  |
| 7        | BM_UP04033 | BULB, AIR PURGE   | 1   |  |
| 8        | BM_UP04218 | THROTTLE CABLE  | 1   |  |
| 9        | BM_UP04197 | SWITCH, ROCKER  | 1   |  |
| 10       | BM_UP04215 | GROMMET - SPLIT   | 2   |  |
| 11       | BM_UP06754 | ENGINE HOUSING INCLUDES ITEMS 12-20                         | 1   |  |



| Position | Article-no | Description  | Qty |  |
|----------|------------|--|-----|--|
| 12       | BM_UP04205 | ELEMENT, FILTER (BRONZE)   | 2   |  |
| 13       | BM_UP04045 | DUCK BILL VALVE  | 2   |  |
| 14       | BM_UP04185 | OIL OUTLET GROMMET   | 1   |  |
| 15       | BM_UP04048 | OIL INTAKE TUBE  | 1   |  |
| 16       | BM_UP04210 | RUBBER TUBING (5 1/2")   | 1   |  |
| 17       | BM_UP04211 | RUBBER TUBING (8 1/2")   | 1   |  |
| 18       | BM_UP03871 | FUEL FILTER  | 1   |  |
| 19       | BM_DA07590 | FUEL CAP W/ RETAINER   | 1   |  |
| 20       | BM_DA07591 | OIL CAP W/ RETAINER  | 1   |  |
| X        | BM_UP04054 | OIL FILTER (NOT SHOWN)   | 1   |  |
| X        | BM_UP04180 | GUIDE BAR BOLT (NOT SHOWN)   | 2   |  |
| 21       | BM_UP04221 | SPEED NUT ("U-TYPE")   | 3   |  |
| 22       | BM_UP04083 | SCREW, CAP-SOCKET HD. (10-24 X 2") TORQUE SPECS 65-76 IN/LBS; 7.3-8.5 NM | 4   |  |
| 23       | BM_UP04087 | WASHER   | 4   |  |
| 24       | BM_UP04208 | PRE FILTER   | 1   |  |
| 25       | BM_UP04227 | SPRING CLIP (CHOKE ROD)  | 1   |  |
| 26       | BM_UP04054 | OIL FILTER   | 1   |  |

## handles

| Position | Article-no | Description   | Qty | Price w/o tax |
|----------|------------|---|-----|---------------|
| 1        | BM_UP06977 | REAR HANDLE KIT INCLUDES ITEMS 2-11                                       | 1   |               |
| 2        | BM_UP04234 | SCREW-PAN HD. (12-14 X 1 1/2") TORQUE SPECS 40-50 IN/LBS; 4.5-5.6 NM      | 1   |               |
| 3        | BM_UP04218 | THROTTLE CABLE  | 1   |               |
| 4        | BM_UP04195 | TRIGGER, THROTTLE   | 1   |               |
| 5        | BM_UP04196 | THROTTLE LOCK OUT   | 1   |               |
| 6        | BM_A08683  | HANDLE COVER KIT INCLUDES ITEMS 7-10                                      | 1   |               |
| 7        | BM_UP04199 | THROTTLE LOCK PIN   | 1   |               |
| 8        | BM_UP04226 | SPRING, COMPRESSION   | 1   |               |
| 9        | BM_UP04050 | RING, RETAINER  | 1   |               |
| 10       | BM_UP03900 | SCREW, THREAD FORM (10-14 X 3/4") TORQUE SPECS 30-40 IN/LBS; 3.4-4.5 NM   | 2   |               |
| 11       | BM_UP04238 | SCREW, THREAD FORM (10-14 X 1 3/8") TORQUE SPECS 30-40 IN/LBS; 3.4-4.5 NM | 1   |               |
| 12       | BM_UP06973 | FRONT HANDLE KIT  | 1   |               |
| X        | BM_UP04234 | SCREW-PAN HD. (12-14 X 1 1/2") (SEE NO. 2 ABOVE)                          | 1   |               |
| 13       | BM_UP08007 | ISOLATOR KIT INCLUDES 14-16   | 1   |               |
| 14       | BM_UP04237 | SCREW, TRUSS HD. (10-14 X 5/8") TORQUE SPECS 30-40 IN/LBS; 3.4-4.5 NM     | 3   |               |
| 15       | BM_UP04233 | SCREW, TRUSS HD. (10-24 X 5/8") TORQUE SPECS 40-50 IN/LBS; 4.5-5.6 NM     | 1   |               |
| 16       | BM_UP04200 | LIMITER, ISOLATOR   | 1   |               |
| 17       | BM_UP03897 | SCREW, THREAD FORM (10-14 X 1/2") TORQUE SPECS 30-40 IN/LBS; 3.4-4.5 NM   | 3   |               |

## starter - ignition

| Position | Article-no  | Description   | Qty |  |
|----------|-------------|---|-----|--|
| 1        | BM_UP06749A | STARTER KIT INCLUDES ITEMS 2-7  | 1   |  |
| 2        | BM_UP04092  | SPRING & CONTAINER  | 1   |  |
| 3        | BM_UP05460  | PULLEY, STARTER   | 1   |  |
| 4        | BM_UP04237  | SCREW, THREAD FORM (10-14 X 5/8") TORQUE SPECS 30-40 IN/LBS; 3.4-4.5 NM | 1   |  |
| 5        | BM_UP04089  | WASHER, RETAINING   | 1   |  |
| 6        | BM_UP04216  | GRIP, STARTER   | 1   |  |
| 7        | BM_UP03911  | ROPE, STARTER 46"   | 1   |  |
| 8        | BM_UP04192  | BAFFLE, FAN HOUSING   | 1   |  |
| 9        | BM_UP05850A | ROTOR & STARTER PAWL  | 1   |  |
| 10       | BM_UP07865  | IGNITION KIT (33CC MODELS); INCLUDES ITEM 11                            | 1   |  |
| 10       | BM_UP05851  | IGNITION KIT BOTH KITS INCLUDE:   | 1   |  |
| 11       | BM_UP04086  | SCREW, THREAD FORM (8-32 X 5/8") TORQUE SPECS 30-40 IN/LBS; 3.4-4.5 NM  | 2   |  |
| 12       | BM_UP05875  | SPARK PLUG TORQUE SPECS 120-180 IN/LBS; 13.6-20.3 NM                    | 1   |  |
| 13       | BM_UP04222  | IGNITION SWITCH HARNESS   | 1   |  |
| 14       | BM_UP04215  | GROMMET, WIRE HARNESS (SPLIT)   | 1   |  |
| 15       | BM_UP04241  | WASHER, FLAT  | 1   |  |
| 16       | BM_UP04081  | NUT, JAM TORQUE SPECS 100-150 IN/LBS; 11.3-16.9 NM                      | 1   |  |
| 17       | BM_UP04236  | SCREW, TRUSS HD. (10-14 X 7/8") TORQUE SPECS 30-40 IN/LBS; 3.4-4.5 NM   | 2   |  |
| 18       | BM_UP04237  | SCREW, TRUSS HD. (10-14 X 5/8") TORQUE SPECS 30-40 IN/LBS; 3.4-4.5 NM   | 2   |  |

**PRICES ARE SUBJECT TO CHANGE WITHOUT NOTICE**

RQ\* ... ON REQUEST

NLA\* ... NO LONGER AVAILABLE

TBO\* ... TO BE OBSOLETE