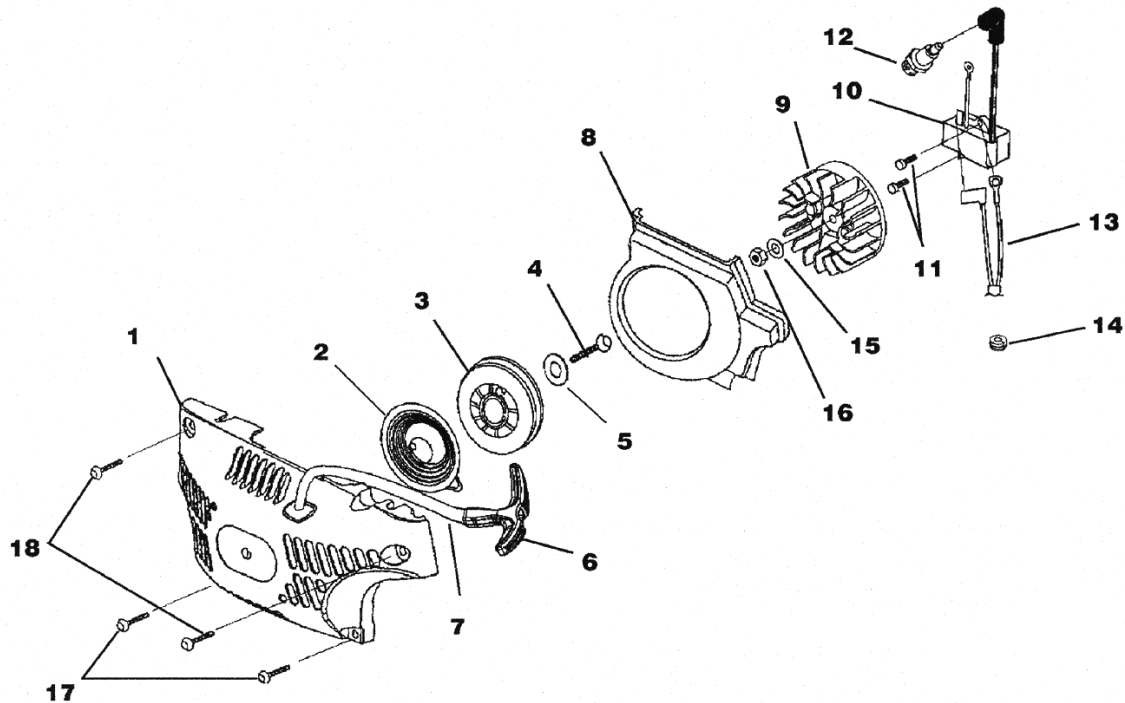
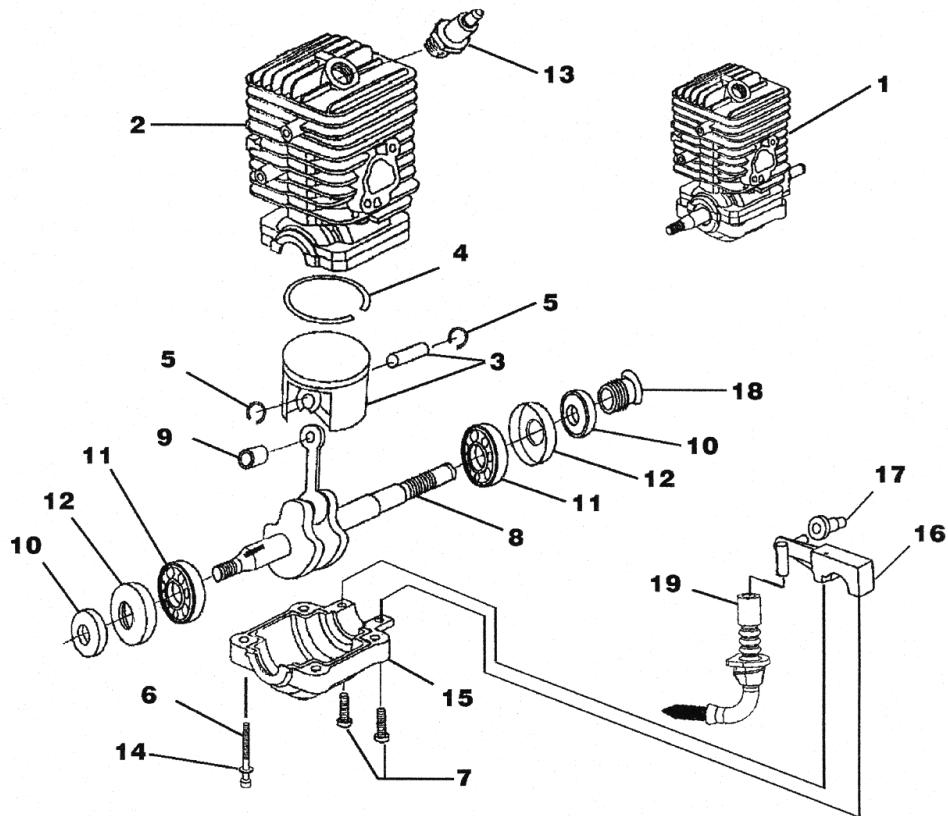


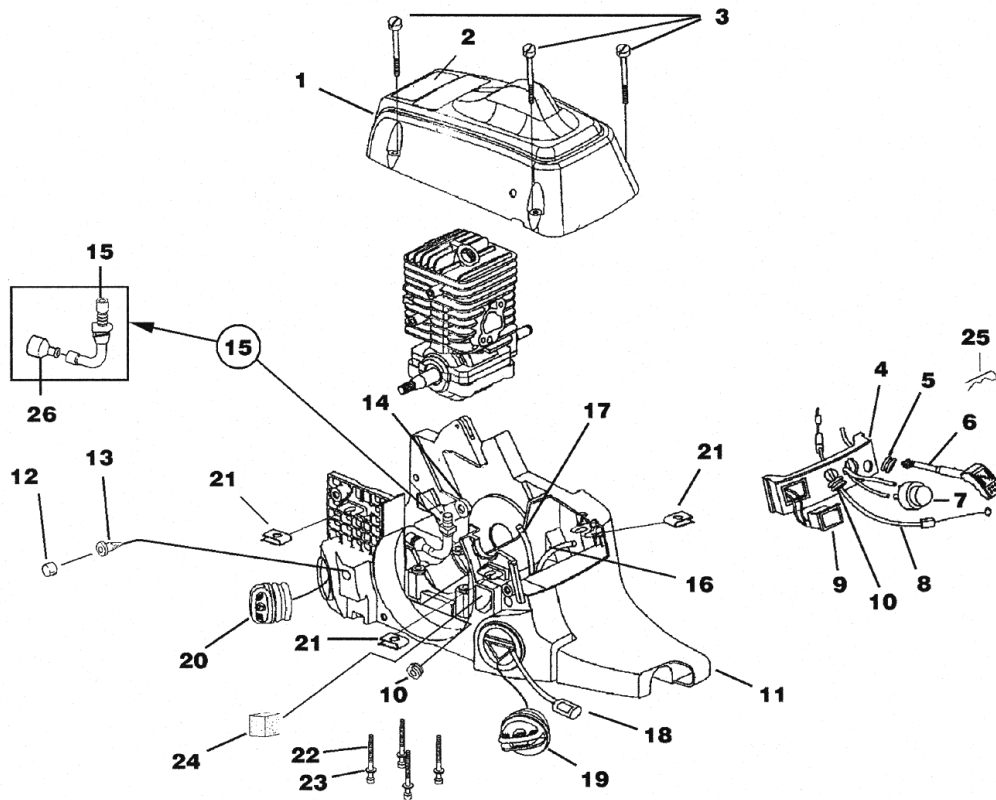
Starter - Ignition



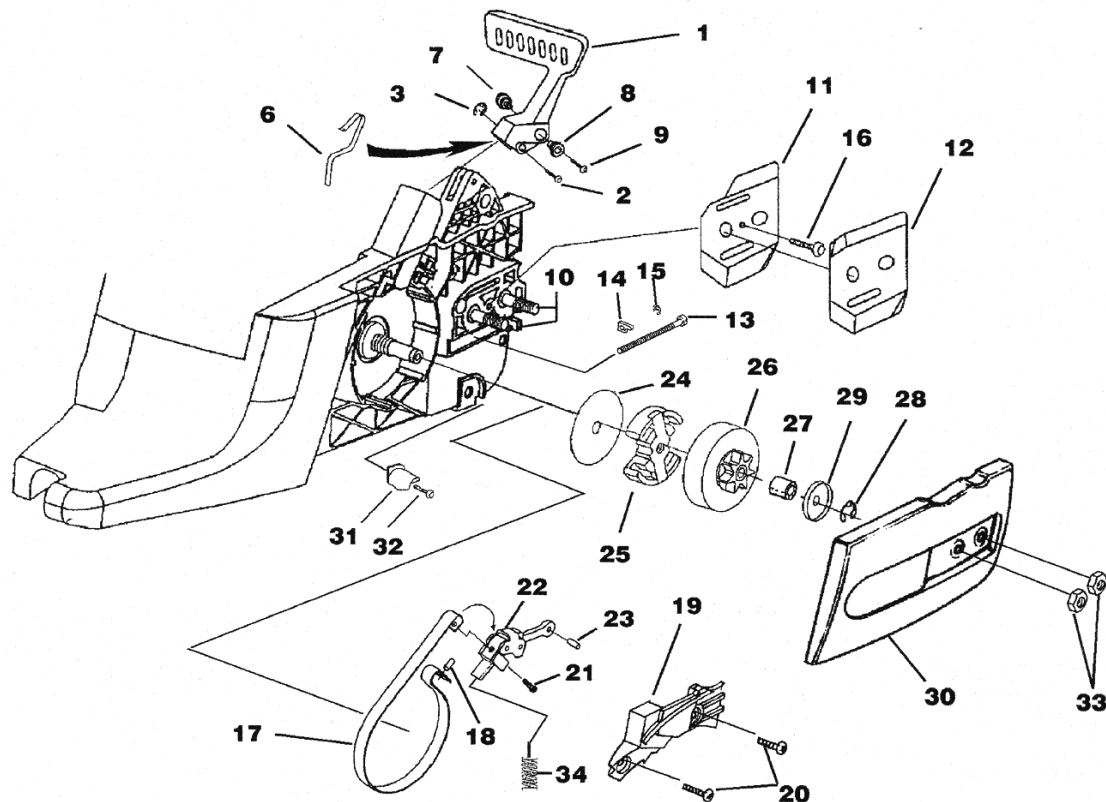
Engine Internal - Oil Pump



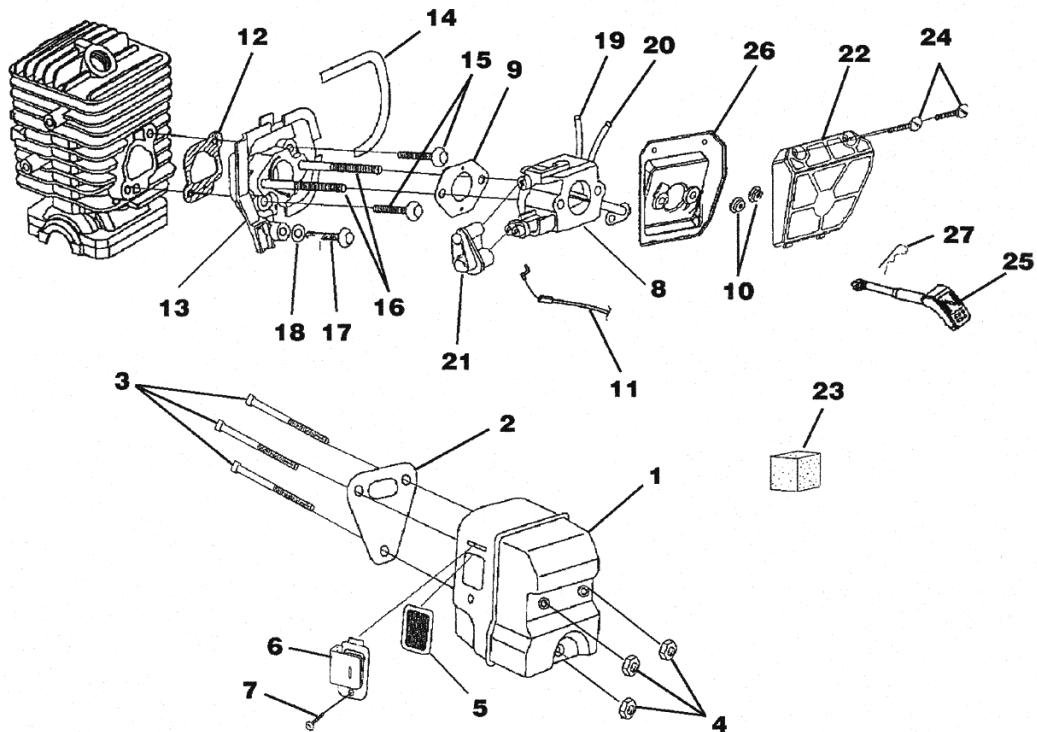
Engine Housing - Fuel Tank - Oil Tank



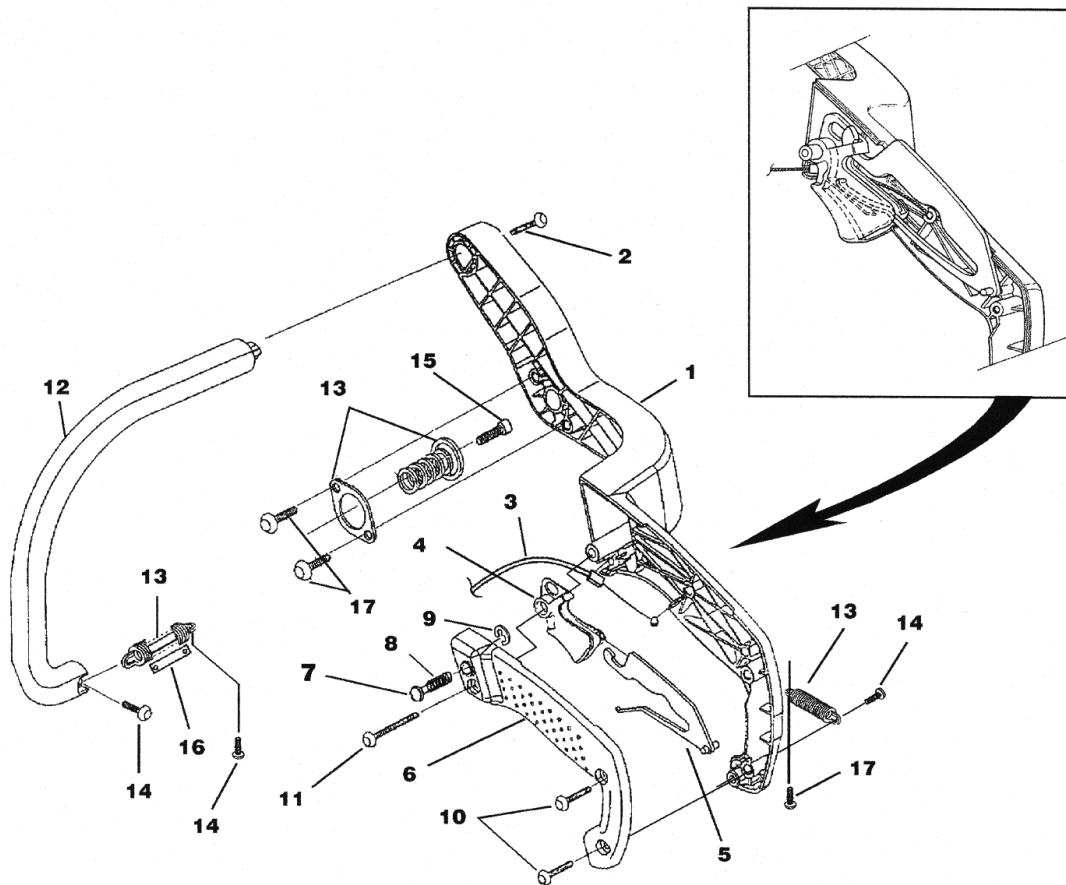
Clutch - Chain Brake - Drive Case Cover



Carburetor - Muffler - Air Filter



Handles



RECOMMENDED RETAIL PRICE
W/O TAX * EXW DUISBURG / PARIS

Homelite®

i 4150 b CHAIN SAW UT 10867

carburetor - muffler - air filter

Position	Article-no	Description	Qty	Price w/o tax
1	BM_UP06752	MUFFLER KIT (33/38CC); INCLUDES ITEMS 2-7	1	€ 13,99
1	BM_UP00126	MUFFLER KIT (45CC)	1	€ 15,57
2	BM_UP04183	MUFFLER GASKET	1	€ 0,67
3	BM_UP04049	SCREW-SQUARE HD.	3	€ 1,26
4	BM_UP04059	NUT-LOCKING HEX (10-32) TORQUE SPECS 50-60 IN/LBS; 5.6-6.7 NM	3	€ 0,43
5	BM_UP04203	SCREEN, SPARK	1	€ 3,68
6	BM_UP04204	DEFLECTOR, MUFFLER (33/38CC)	1	€ 5,06
6	BM_UP04169	DEFLECTOR, MUFFLER (45CC)	1	€ 5,24
7	BM_UP04244	SCREW	1	€ 0,75
8	BM_UP06737A	CARBURETOR ASSY (33 & 38CC); INCLUDES ITEMS 9-10	1	€ 36,13
8	BM_UP00125	CARBURETOR ASSY (45CC)	1	€ 36,22
8	BM_A09160	CARBURETOR ASSY (INT'L 33CC, INT'L 38CC)	1	€ 37,57
8	BM_UP00499	CARBURETOR ASSY (INT'L 41CC, INT'L 45CC)	1	€ 36,82
9	BM_UP04094	CARBURETOR GASKET	1	€ 2,25
10	BM_UP04217	FLANGE NUT (10-24) TORQUE SPECS 30-40 IN/LBS; 3.4-4.5 NM	2	€ 0,66
11	BM_UP04218	THROTTLE CABLE	1	€ 5,16
12	BM_UP04184	GASKET, HEAT DAM	1	€ 0,71
13	BM_UP04173	HEAT DAM	1	€ 9,74
14	BM_UP04191	SEAL, HEAT DAM	1	€ 1,03
15	BM_UP04084	SCREW, TRUSS HD. TAPTITE (10-24 X 7/8") TORQUE SPECS 45-55 IN/LBS; 5.0-6.2 NM	2	€ 0,21
16	BM_UP04189	SCREW, CARBURETOR	2	€ 0,43
17	BM_UP03897	SCREW, THREAD FORM (10-14 X 1/2") TORQUE SPECS 30-40 IN/LBS; 3.4-4.5 NM	1	€ 0,07
18	BM_UP03867	WASHER, RETAINING	1	€ 2,25
19	BM_UP04211	FUEL LINE (TANK TO CARBURETOR 8 1/2")	1	€ 3,37
20	BM_UP04209	FUEL LINE (CARBURETOR TO PURGE BULB 4")	1	€ 2,44
21	BM_UP04171	CARBURETOR GROMMET	1	€ 3,03
X	BM_UP06753	AIR FILTER KIT INCLUDES ITEMS 22-24	1	€ 5,59
22	BM_UP04533	AIR FILTER COVER	1	€ 5,91
23	BM_UP04208	PRE FILTER (IN ENGINE HOUSING)	1	€ 2,68
24	BM_UP04235	SCREW-SLOTTED PAN HD. (8-16 X 5/8") TORQUE SPECS 15-20 IN/LBS; 1.7-2.3 NM	2	€ 0,66
25	BM_UP04213	ROD, CHOKE	1	€ 1,87
26	BM_UP04178	AIR FILTER PLATE	1	€ 4,31
27	BM_UP04227	SPRING CLIP (CHOKE ROD)	1	€ 0,66

clutch - chain brake - drive case cover

Position	Article-no	Description	Qty	Price w/o tax
1	BM_UP06568	HAND GUARD KIT INCLUDES ITEMS 2-5	1	€ 14,04
2	BM_UP04214	HAND GUARD ACTUATING PIN	1	€ 2,16
3	BM_UP04056	RETAINING RING	1	€ 0,51
4	BM_UP04207	HAND GUARD LINK (NON-CHAIN BRAKE UNITS-NOT SHOWN)	1	€ 2,25
5	BM_UP04090	ROLL PIN (NON-CHAIN BRAKE UNITS-NOT SHOWN)	1	€ 2,44
6	BM_UP04224	SPRING, HANDGUARD	1	€ 1,87
7	BM_UP04202	PIVOT, L.H.	1	€ 2,06
8	BM_UP04201	PIVOT, R.H.	1	€ 2,06
9	BM_UP04240	SCREW, HEX SOCKET HD. (8-32 X 5/8") TORQUE SPECS 25-35 IN/LBS; 2.8-3.9 NM	1	€ 0,66
10	BM_UP04180	GUIDE BAR BOLT	2	€ 1,13
X	BM_UP06966	GUIDE BAR ADJUSTING KIT INCLUDES ITEMS 11-15	1	€ 4,51
11	BM_UP04206	PLATE, GUIDE BAR	1	€ 1,18
12	BM_UP04085	PLATE, GUIDE BAR	1	€ 1,18
13	BM_UP04187	SCREW, GUIDE BAR ADJUSTING	1	€ 0,66
14	BM_UP04186	PIN, GUIDE BAR ADJUSTING	1	€ 0,66
15	BM_UP04056	RING, RETAINING	1	€ 0,51
16	BM_UP04082	SCREW, THREAD FORM (6-19 X 1/2") TORQUE SPECS 8-18 IN/LBS; .9-2.0 NM	1	€ 2,25
17	BM_A08680A	CHAIN BRAKE KIT INCLUDES ITEMS 18-21	1	€ 9,03
18	BM_UP04181	PIN, ROLL	1	€ 1,87
19	BM_UP04309	COVER, CHAIN BRAKE	1	€ 2,06
20	BM_UP04082	SCREW, PAN HD. (6-19 X 1/2") TORQUE SPECS 10-20 IN/LBS; 1.1-2.3 NM	2	€ 2,25

Position	Article-no	Description	Qty	Price w/o tax
21	BM_UP04239	SCREW, PAN HD. (8-16 X .320) TORQUE SPECS 20-30 IN/LBS; 2.3-3.4 NM	1	€ 0,50
22	BM_UP04223	CHAIN BRAKE LINK	1	€ 3,85
23	BM_UP04090	PIN, ROLL	1	€ 2,44
24	BM_UP04182	THRUST WASHER	1	€ 1,69
25	BM_UP06727	CLUTCH & HARDWARE TORQUE SPECS 130-180 IN/LBS; 14.7-20.3 NM	1	€ 12,84
26	BM_UP06967	SPROCKET, DRUM (3/8 PITCH) INCLUDES ITEMS 27-28	1	€ 10,09
26	BM_UP04560	SPROCKET, DRUM (.325 PITCH) (I3850B & 45CC ONLY)	1	€ 20,96
27	BM_UP04175	BEARING, NEEDLE	1	€ 2,10
28	BM_UP04228	RING, RETAINING	1	€ 0,16
29	BM_UP04179	WASHER, CUPPED	1	€ 1,03
30	BM_UP06975	DRIVE CASE COVER INCLUDES ITEMS 31-32	1	€ 18,28
31	BM_UP04088	STOP, CHAIN	1	€ 0,76
32	BM_UP03900	SCREW, THREAD FORM (10-14 X 3/4") TORQUE SPECS 30-50 IN/LBS; 3.4-5.6 NM	1	€ 2,25
33	BM_UP04058	NUT, HEX TORQUE SPECS HAND TIGHT	2	€ 2,47
34	BM_UP04032	SPRING, COMPRESSION	1	€ 2,25

engine internal - oil pump

Position	Article-no	Description	Qty	Price w/o tax
1	BM_UP03119	SHORT BLOCK COMPLETE (33CC); INCLUDES ITEMS 2-12	1	€ 111,47
1	BM_UP04161	SHORT BLOCK COMPLETE (38CC)	1	€ 127,40
1	BM_UP04168	SHORT BLOCK COMPLETE (45CC)	1	€ 151,29
2	BM_A08666	CYLINDER KIT (33CC)	1	€ 89,38
2	BM_A08667	CYLINDER KIT (38CC)	1	€ 97,69
2	BM_UP00129	CYLINDER KIT (45CC)	1	€ 79,10
X	BM_UP04183	GASKET, MUFFLER (NOT SHOWN)	1	€ 0,67
X	BM_UP04184	GASKET, HEAT DAM (NOT SHOWN)	1	€ 0,71
X	BM_UP04094	GASKET, CARBURETOR (NOT SHOWN)	1	€ 2,25
3	BM_UP06971	PISTON & PIN (33CC); INCLUDES ITEMS 4-5	1	€ 33,72
4	BM_UP04177	PISTON RING (33CC)	1	€ 1,82
5	BM_UP04051	RING, RETAINING	2	€ 0,44
3	BM_UP06972	PISTON & PIN (38CC); INCLUDES ITEMS 4-5	1	€ 37,66
4	BM_UP04190	PISTON RING (38CC)	1	€ 1,82
5	BM_UP04051	RING, RETAINING	2	€ 0,44
3	BM_UP00130	PISTON & PIN (45CC); INCLUDES ITEMS 4-5	1	€ 20,88
4	BM_UP04231	PISTON RING (45CC)	1	€ 2,72
5	BM_UP04051	RING, RETAINING	2	€ 0,44
6	BM_UP04083	SCREW, CAP-SOCKET HD. (10-24 X 2") TORQUE SPECS 65-75 IN/LBS; 7.3-8.5 NM; REQUIRED LOCTITE 262 RED	4	€ 5,33
7	BM_UP03898	SCREW, PAN HD., PLASTITE (8-16 X 5/8") TORQUE SPECS 15-20 IN/LBS; 1.7-2.3 NM	2	€ 0,21
8	BM_UP03118	CRANKSHAFT & ROD ASSY (33 & 38CC); INCLUDES ITEMS 9-12	1	€ 92,54
8	BM_UP04165A	CRANKSHAFT & ROD ASSY (45CC)	1	€ 98,35
9	BM_UP04174	BEARING, NEEDLE INCLUDES ITEMS 10-12	1	€ 2,90
10	BM_UP04047	SHAFT SEAL	2	€ 4,03
11	BM_UP04176	BEARING & RUBBER CASE INCLUDES ITEM 12	2	€ 7,40
12	BM_UP04046	RUBBER CASE	2	€ 2,25
13	BM_UP04093	SPARK PLUG TORQUE SPECS 120-180 IN/LBS; 13.6-20.3 NM	1	€ 9,07
14	BM_UP04087	WASHER	4	€ 2,25
15	BM_UP04172	LOWER CRANKCASE (33 & 38CC)	1	€ 19,44
15	BM_UP04232	LOWER CRANKCASE (45CC)	1	€ 19,49
16	BM_UP06602	OIL PUMP KIT INCLUDES ITEMS 17-19	1	€ 18,78
17	BM_UP04185	GROMMET, OIL OUTLET	1	€ 1,87
18	BM_UP04188	LEFT HAND WORM	1	€ 1,82
19	BM_UP04048	OIL INTAKE TUBE W/FILTER	1	€ 2,93

engine housing - fuel tank - oil tank

Position	Article-no	Description	Qty	Price w/o tax
1	BM_A08692	CYLINDER COVER KIT INCLUDES ITEMS 2-3	1	€ 9,03
2	BM_UP04212	SAFETY DECAL	1	€ 1,03
3	BM_UP04219	SCREW-SLOTTED PAN HD. TORQUE SPECS 15-25 IN/LBS; 1.7-2.8 NM	3	€ 0,43
4	BM_UP04193	CONTROL PANEL	1	€ 0,87
5	BM_UP04052	GROMMET	1	€ 2,47
6	BM_UP04213	ROD, CHOKE	1	€ 1,87
7	BM_UP04033	BULB, AIR PURGE	1	€ 3,60
8	BM_UP04218	THROTTLE CABLE	1	€ 5,16
9	BM_UP04197	SWITCH, ROCKER	1	€ 2,29
10	BM_UP04215	GROMMET - SPLIT	2	€ 0,46

Position	Article-no	Description	Qty	Price w/o tax
11	BM_UP06754	ENGINE HOUSING INCLUDES ITEMS 12-20	1	€ 59,18
12	BM_UP04205	ELEMENT, FILTER (BRONZE)	2	€ 0,66
13	BM_UP04045	DUCK BILL VALVE	2	€ 3,80
14	BM_UP04185	OIL OUTLET GROMMET	1	€ 1,87
15	BM_UP04048	OIL INTAKE TUBE	1	€ 2,93
16	BM_UP04210	RUBBER TUBING (5 1/2")	1	€ 2,25
17	BM_UP04211	RUBBER TUBING (8 1/2")	1	€ 3,37
18	BM_UP03871	FUEL FILTER	1	€ 2,25
19	BM_DA07590	FUEL CAP W/ RETAINER	1	€ 3,88
20	BM_DA07591	OIL CAP W/ RETAINER	1	€ 3,88
X	BM_UP04054	OIL FILTER (NOT SHOWN)	1	€ 4,50
X	BM_UP04180	GUIDE BAR BOLT (NOT SHOWN)	2	€ 1,13
21	BM_UP04221	SPEED NUT ("U-TYPE")	3	€ 0,66
22	BM_UP04083	SCREW, CAP-SOCKET HD. (10-24 X 2") TORQUE SPECS 65-76 IN/LBS; 7.3-8.5 NM	4	€ 5,33
23	BM_UP04087	WASHER	4	€ 2,25
24	BM_UP04208	PRE FILTER	1	€ 2,68
25	BM_UP04227	SPRING CLIP (CHOKE ROD)	1	€ 0,66
26	BM_UP04054	OIL FILTER	1	€ 4,50

handles

Position	Article-no	Description	Qty	Price w/o tax
1	BM_UP06977	REAR HANDLE KIT INCLUDES ITEMS 2-11	1	€ 26,41
2	BM_UP04234	SCREW-PAN HD. (12-14 X 1 1/2") TORQUE SPECS 40-50 IN/LBS; 4.5-5.6 NM	1	€ 0,84
3	BM_UP04218	THROTTLE CABLE	1	€ 5,16
4	BM_UP04195	TRIGGER, THROTTLE	1	€ 0,76
5	BM_UP04196	THROTTLE LOCK OUT	1	€ 4,40
6	BM_A08683	HANDLE COVER KIT INCLUDES ITEMS 7-10	1	€ 5,94
7	BM_UP04199	THROTTLE LOCK PIN	1	€ 1,59
8	BM_UP04226	SPRING, COMPRESSION	1	€ 0,75
9	BM_UP04050	RING, RETAINER	1	€ 0,25
10	BM_UP03900	SCREW, THREAD FORM (10-14 X 3/4") TORQUE SPECS 30-40 IN/LBS; 3.4-4.5 NM	2	€ 2,25
11	BM_UP04238	SCREW, THREAD FORM (10-14 X 1 3/8") TORQUE SPECS 30-40 IN/LBS; 3.4-4.5 NM	1	€ 1,13
12	BM_UP06973	FRONT HANDLE KIT	1	€ 23,91
X	BM_UP04234	SCREW-PAN HD. (12-14 X 1 1/2") (SEE NO. 2 ABOVE)	1	€ 0,84
13	BM_UP08007	ISOLATOR KIT INCLUDES 14-16	1	€ 3,29
14	BM_UP04237	SCREW, TRUSS HD. (10-14 X 5/8") TORQUE SPECS 30-40 IN/LBS; 3.4-4.5 NM	3	€ 1,03
15	BM_UP04233	SCREW, TRUSS HD. (10-24 X 5/8") TORQUE SPECS 40-50 IN/LBS; 4.5-5.6 NM	1	€ 0,66
16	BM_UP04200	LIMITER, ISOLATOR	1	€ 1,87
17	BM_UP03897	SCREW, THREAD FORM (10-14 X 1/2") TORQUE SPECS 30-40 IN/LBS; 3.4-4.5 NM	3	€ 0,07

starter - ignition

Position	Article-no	Description	Qty	Price w/o tax
1	BM_UP06749A	STARTER KIT INCLUDES ITEMS 2-7	1	€ 21,82
2	BM_UP04092	SPRING & CONTAINER	1	€ 7,84
3	BM_UP05460	PULLEY, STARTER	1	€ 4,03
4	BM_UP04237	SCREW, THREAD FORM (10-14 X 5/8") TORQUE SPECS 30-40 IN/LBS; 3.4-4.5 NM	1	€ 1,03
5	BM_UP04089	WASHER, RETAINING	1	€ 2,47
6	BM_UP04216	GRIP, STARTER	1	€ 1,87
7	BM_UP03911	ROPE, STARTER 46"	1	€ 3,96
8	BM_UP04192	BAFFLE, FAN HOUSING	1	€ 4,50
9	BM_UP05850A	ROTOR & STARTER PAWL	1	€ 16,56
10	BM_UP07865	IGNITION KIT (33CC MODELS); INCLUDES ITEM 11	1	€ 18,18
10	BM_UP05851	IGNITION KIT BOTH KITS INCLUDE:	1	€ 53,12
11	BM_UP04086	SCREW, THREAD FORM (8-32 X 5/8") TORQUE SPECS 30-40 IN/LBS; 3.4-4.5 NM	2	€ 4,14
12	BM_UP05875	SPARK PLUG TORQUE SPECS 120-180 IN/LBS; 13.6-20.3 NM	1	€ 4,78
13	BM_UP04222	IGNITION SWITCH HARNESS	1	€ 3,00
14	BM_UP04215	GROMMET, WIRE HARNESS (SPLIT)	1	€ 0,46
15	BM_UP04241	WASHER, FLAT	1	€ 1,21
16	BM_UP04081	NUT, JAM TORQUE SPECS 100-150 IN/LBS; 11.3-16.9 NM	1	€ 0,52
17	BM_UP04236	SCREW, TRUSS HD. (10-14 X 7/8") TORQUE SPECS 30-40 IN/LBS; 3.4-4.5 NM	2	€ 1,03
18	BM_UP04237	SCREW, TRUSS HD. (10-14 X 5/8") TORQUE SPECS 30-40 IN/LBS; 3.4-4.5 NM	2	€ 1,03

PRICES ARE SUBJECT TO CHANGE WITHOUT NOTICE

RO* ... ON REQUEST

NLA* ... NO LONGER AVAILABLE

TBO* ... TO BE OBSOLETE