

Homelite®

- GB PARTS LIST
- F LISTE DE PIÈCES
- D TEILELISTE
- I ELENCO DELLE PARTI
- E LISTA DE PIEZAS

LX30 *Bandit*®

UT10705-E
 UT10716-D
 UT10705-3B

180
 UT10752

- GB IF YOUR UNIT IS NOT LISTED ABOVE, SEE CHART ON PAGE 2 TO FIND PARTS LIST NUMBER FOR YOUR UNIT.
- F SI VOTRE PRODUIT (UNITÉ, ARTICLE) NE FIGURE PAS SUR LA LISTE CI-DESSUS, REPORTEZ-VOUS À LA PAGE 2 POUR LE NUMÉRO DE LA LISTE DES PIÈCES CORRESPONDANT.
- D FALLS IHR GERÄT AUF VORSTEHENDER LISTE NICHT AUFGEFÜHRT IST, SUCHE SIE IN DER TABELLE AUF SEITE 2 NACH DER ERSATZTEILELISTENNUMMER FÜR IHR GERÄT.
- I SE LA VOSTRA UNITÀ NON SI TROVA FRA QUELLE SOPRA ELENCATE, VEDERE LA TABELLA A PAGINA 2 PER TROVARE IL NUMERO DI CATALOGO DELLA VOSTRA UNITÀ.
- E SI SU UNIDAD NO FIGURA EN LA LISTA ANTERIOR, CONSULTE LA TABLA DE LA PAGINA 2 PARA ENCONTRAR LOS NUMEROS DE LAS PARTES PARA LA MISMA.

Printed in U.S.A.
 Imprimé aux E.-U.
 Gedruckt in U.S.A.
 Stampato negli Stati Uniti
 Impreso en EE. UU.
P/N P501537

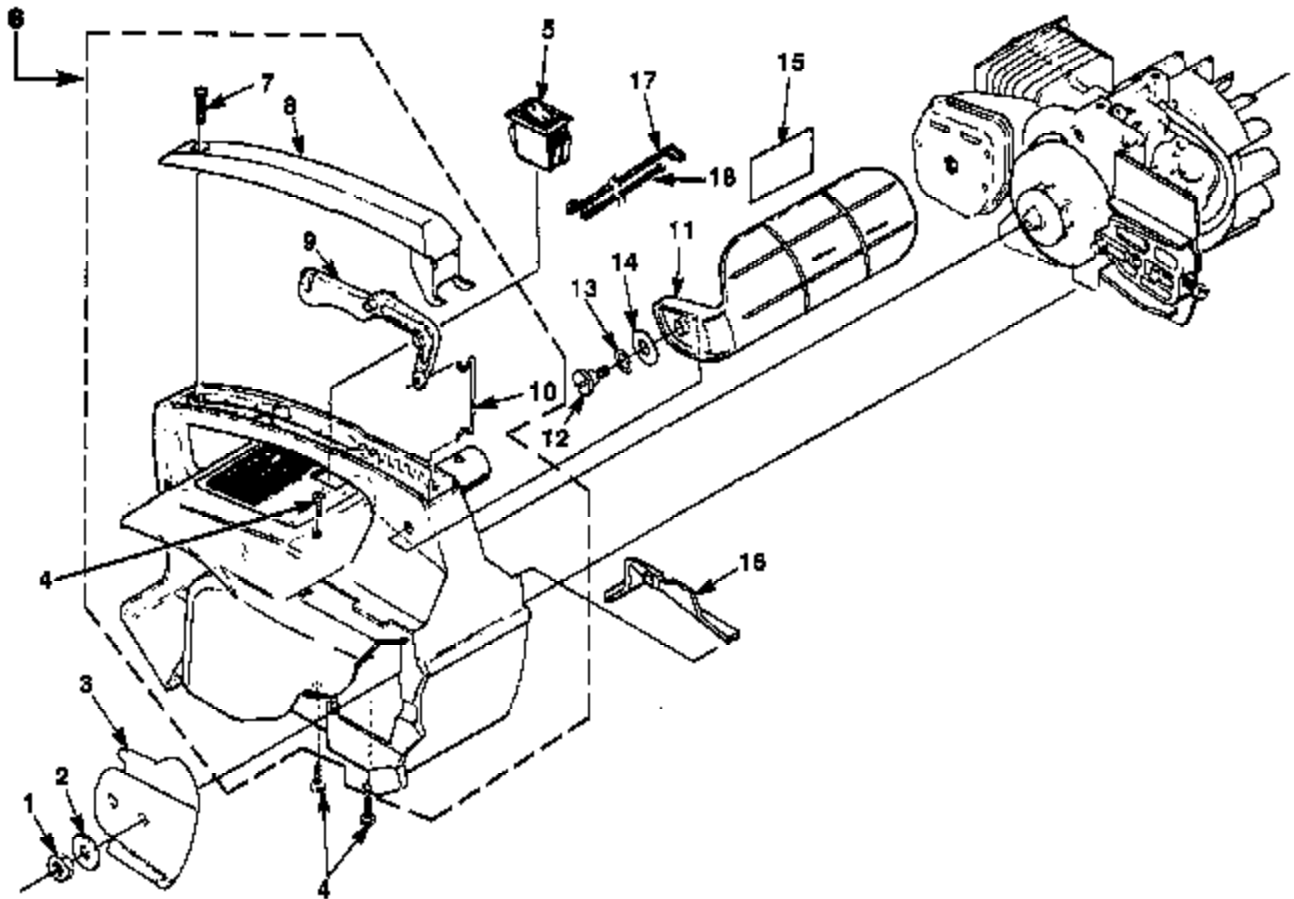
- GB PARTS LIST
- F LISTE DE PIÈCES
- D TEILELISTE
- I ELENCO DELLE PARTI
- E LISTA DE PIEZAS

	UT#	18823	18897
LX30 Bandit	10705, A	X	
	10705-B, C, D		X
	10716, A	X	
	10716-B, C		X
	10705-3, A		X

- GB NOTES
- F NOTES
- D NOTIZEN
- I NOTE
- E NOTAS

	UT#		

ENGINE HOUSING

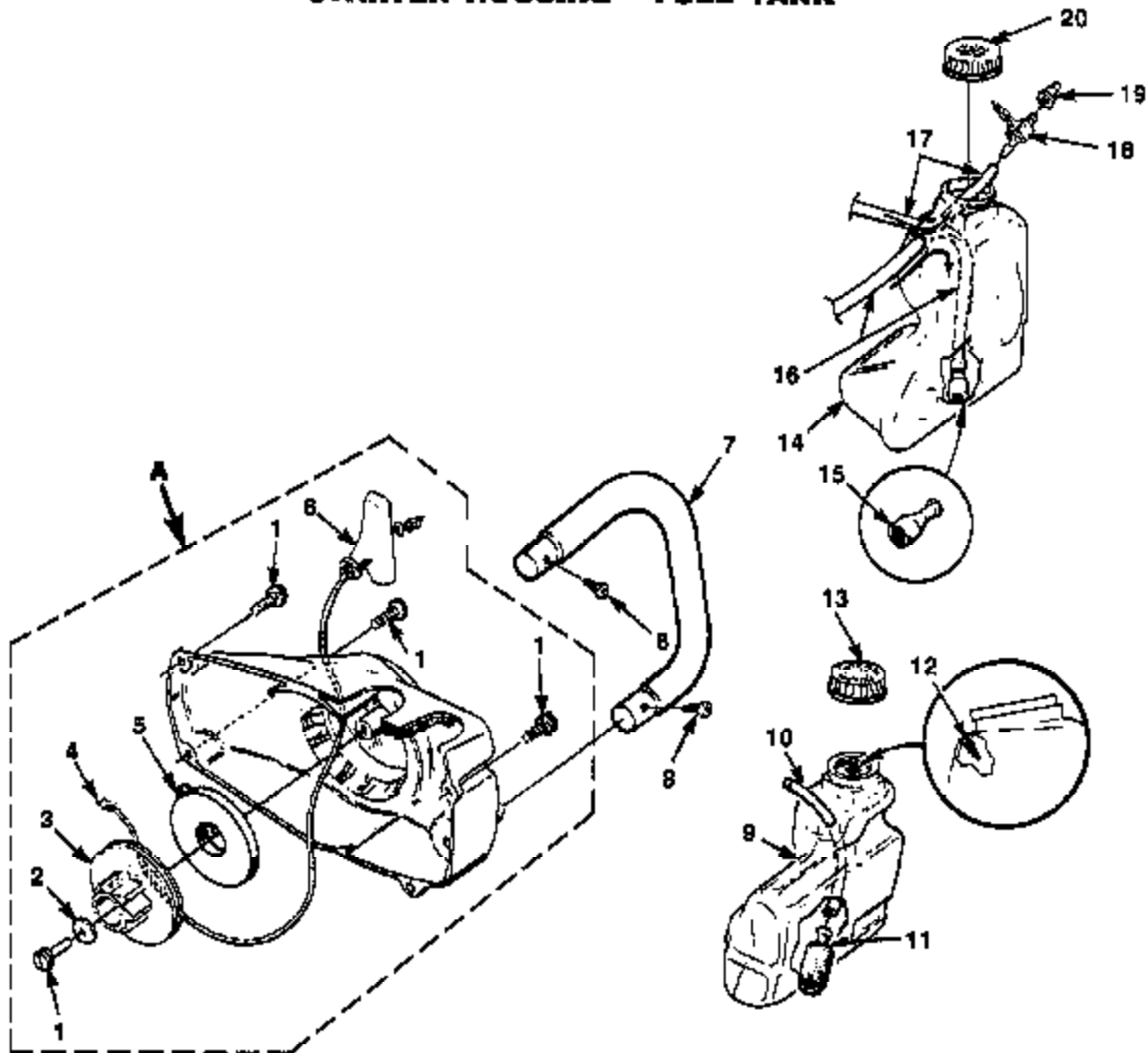


No.	Part No.	Description	Qty
1	B1065 2	NUT- Guide Bar	1
2	89308 A	WASHER- Flat	1
3	04440	PLATE- Guide Bar	1
4	82598	SCREW- Pan Hd. (10-24 X 3/4")	4
5	02497	SWITCH- Rocker	1
6	A 07651	ENGINE HOUSING KIT	1
7	82312	SCREW- Pan Hd. (#10 X 5/8")	1
8	89872 A	COVER- Handle	1
9	89874 D	TRIGGER	1
10	00138	ROD- Throttle	1
11	A 70788 C	HANDGUARD	1
12	86714	SCREW- Shoulder (#10 X .580)	1
13	95894	WASHER- Curved Spring	1
14	86102	WASHER- Flat	1
15	02661	DECAL- Handguard	1
16	69263	COVER- Air Filter	1
17	A 02484	LEAD- Ring Term.	1
18	A 02482	LEAD- Double Flag	1

Item No.	Torque Specs		Required Tool/E
	In/Lbs	Nm	
1	Hand Tight		
4	55-85	8.3-7.5	
7	15-20	1.7-2.3	
12	40-50	4.6-5.7	

Warranty Flat Rate		
Job	Description	Time/hr.
FD97	Hand Guard	0.8
FD12	Engine Housing	0.8
FA17	Ignition Switch	0.3
FF13	Throttle/Rod/Trigger	0.3
FK10	Guide Bar, Shims, Adj.	0.3
FA12	Ground Strap/Lead	0.3

STARTER HOUSING - FUEL TANK



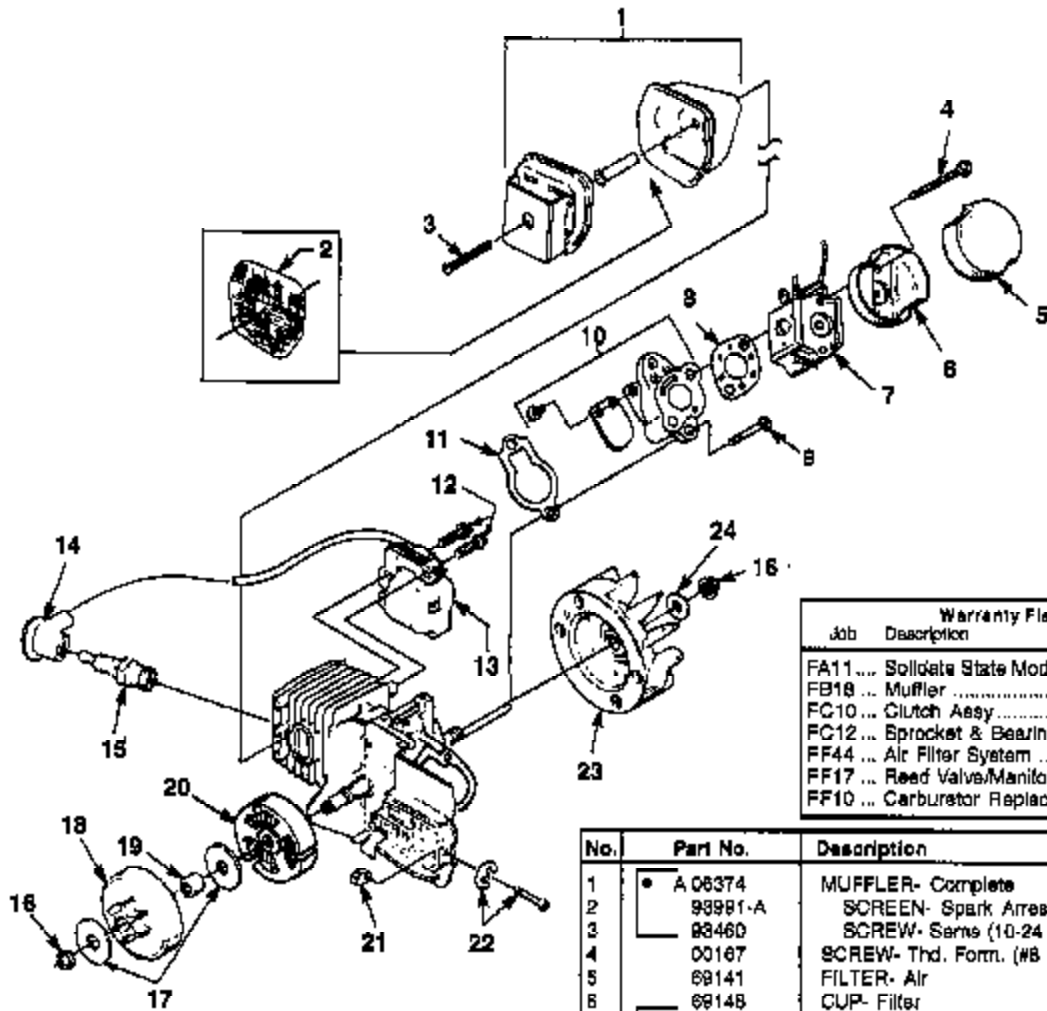
No.	Part No.	Description	Qty
A	A 08268 A	STARTER ASSY., Complete	1
1	82588	SCREW- Torx (#10 X 3/4")	5
2	94062	WASHER- Retaining (#10)	1
3	97788 B	PULLEY- Starter	1
4	97899 01	ROPE- Starter (48')	1
	99052 A	ROPE- Starter (250 Ft. Reel)	1
6	A 97906	SPRING & CONTAINER	1
8	02284	GRIP- Starter	1
7	A 07633	HANDLE BAR	1
8	94085	SCREW- Pan Plastic (#10-16 X 3/4")	2
9	A 00174	FUEL TANK	1
10	07454 28	TUBING- Rubber (7')	1
11	49422	FILTER- Fuel	1
12	98819	VALVE- Duck Bill	1
13	A 97359 A	FUEL CAP	1

No.	Part No.	Description	Qty
14	A 07552	OIL TANK	1
15	A 68593	FINDER- Oil	1
16	07454 32	TUBING- Rubber (6")	1
17	07454 20	TUBING- Rubber (6")	1
18	A 07507	FITTING- Vent	1
19	98841	VALVE- Check	1
20	A 97359 A	OIL CAP	1

Torque Specs			
Item No.	In/Lbs	Nm	Required Loc/lt
1	30-50	3.4-5.8	
8	15-20	1.7-2.3	

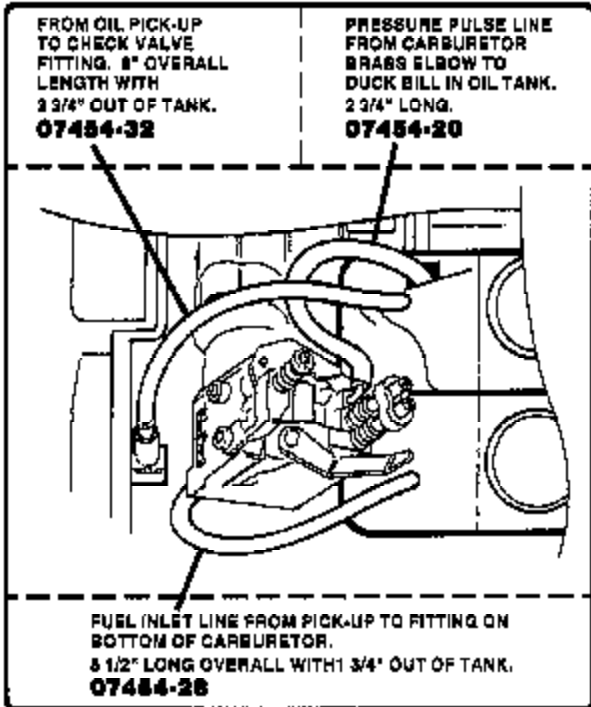
Warranty Flat Rate		
Job	Description	Time/Hr.
FD20	Handle Bar Assy	0.3
FG10	Starter Assy	0.3
FF12	Fuel Line	0.4
FF16	Fuel Tank	0.5
FE12	Oil Lines	0.4
FE14	Oil Tank	0.5

ENGINE HOUSING



Warranty Flat Rate		
Job	Description	Time/Hr.
FA11	... SoliGate State Module	0.3
FB18	... Muffler	0.3
FC10	... Clutch Assy	0.6
FC12	... Sprocket & Bearings	0.6
FF44	... Air Filter System	0.2
FF17	... Reed Valve/Manifold	0.7
FF10	... Carburetor Replace	0.5

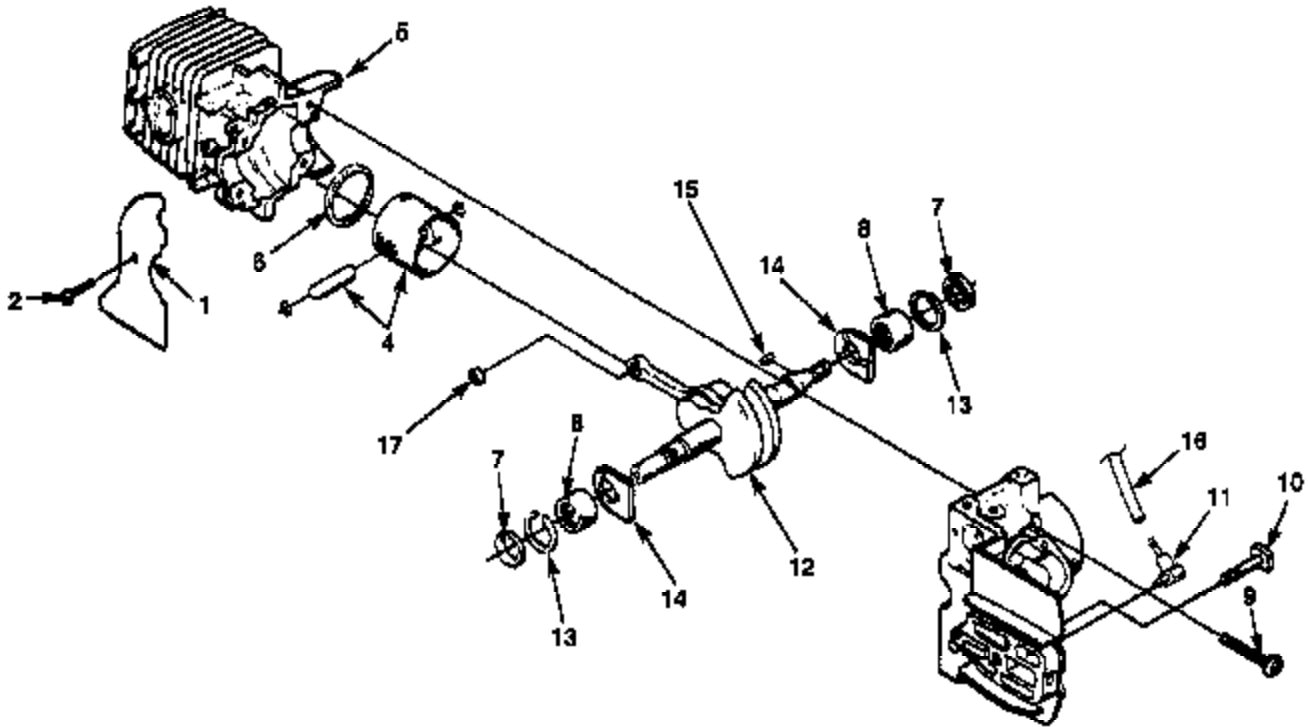
No.	Part No.	Description	Qty
1	A 06374	MUFFLER- Complete	1
2	98981-A	SCREEN- Spark Arrestor	1
3	98460	SCREW- Same (10-24 X 1 7/8")	1
4	00167	SCREW- Thd. Form. (#8 X 1.85)	2
5	69141	FILTER- Air	1
6	69148	CUP- Filter	1
7	UP 00750	CARBURETOR KIT	1
8	02488	GASKET- Carburetor	1
9	82537	SCREW- Thread Form. (#10-24 X 7/8")	2
10	A 02163	HEAT DAM & REED	1
11	02453	GASKET- Heat Dam	1
12	82540	SCREW- Thread Form. (8-32 X 1")	2
13	84711 CS	MODULE- Ignition	1
14	A 33055	TERMINAL	1
15	96189 S	SPARK PLUG	1
16	79252	SPARK PLUG (Int'l) (UT-10716-B)	1
16	81229 A	NUT- Cone Lock (5/16-24)	2
17	85299	WASHER- Thrust	2
18	A 85853 E	SPROCKET & DRUM	1
19	70277	BEARING	1
20	A 97921	CLUTCH KIT	3
21	89254 2	PIN-Guide Bar Adjusting	1
22	A 00440	SCREW & E RING KIT	1
23	A 04159 B	ROTOR & STARTER PAWLS	1
24	84065	WASHER- (5/16")	1



Item No.	Torque Specs		Required Locite
	(n/Lbs)	(Nm)	
3	50-60	5.7-6.9	
4	35-45	4.0-5.2	
9	65-75	7.5-8.6	
12	30-40	3.4-4.6	
15	120-180	13.8-20.7	

12/4/98

ENGINE INTERNAL



No.	Part No.	Description	Qty
1	02639	SAW DUST SHIELD	1
2	93932	SCREW- Tepping (#8-32 x 5/16")	1
3	A 00132 1A	SHORT BLOCK	1
	UP 00058	SHORT BLOCK **	1
4	A 04330	PISTON & PIN ASSY.	1
5	02485 5	CYLINDER	1
	UP 00089	CYLINDER **	1
6	93185	RING- Piston	1
7	07025	SEAL- Shaft	2
8	12530	BEARING- Needle	2
9	82587	SCREW- Torx Pan Hd. (10-24 x 1 1/8")	4
10	89195	BOLT- Guide Bar	1
11	07610	VALVE- Check	1
12	A 97811-A	CRANKSHAFT- Rod and Bearing	1
13	89407	SPACER	2
14	03982	WASHER- Thrust	2
15	89250	KEY- Woodruff	1
16	07454-32	TUBING- Rubber (Oil Line) (8")	1
17	02035	BEARING- Wrist Pin	1

Item No.	Torque Specs		Required Loctite
	In/Lbs	Nm	
2	18-24	2.0-2.8	
8	65-75	7.5-8.6	

Warranty Flat Rate		
Job	Description	Time/hr.
FB20	Short block	1.0
FB15	C/Case Seal (per side)	0.4
FK11	Guide Bar Studs	0.5

** After Serial Number HR0010001

ACCESSORIES

SAFE T TIP (Standard) A-70776-B GREASE-Multi Purpose 18483 Graisse universelle Mehrzweck-Schmiermittel Grasso, multiuso Grasa de uso general	GUIDE BAR Guide barre Schwerk Lama Barra Guía HT-10001-Q4 HT-12001-Q4 PT-12371-Q4 PT-14371-Q4 PT-16371-Q4	CHAIN Chaîne Kette Cadena HI-N7242-AH (35-MD50-42) HI-N7248-BH (35-MD50-48) HI-N7248-BH (35-MD50-46) HI-N7253-AH (35-MD50-53) HI-N7259-AH (35-MD50-53)
KIT-Repair (sprocket nose bar) A-70239-E Jeu de réparation (lame à nez à pignon) Reparatursatz (Kettenrad-Nasenepitze) Kit per riparazioni (denta punta lama) Juego de reparación (extremo barra rueda dentada)		
TOOLS OUTILS WERKZEUGE ATTREZZI HERAMIENTAS	IGNITION TEST SPARK PLUG GP-20322-6 Testeur d'allumage Testzündkerze für Zündprüfung Candela di collaudo Buja para probar el encendido	
WRENCH (combination) D-24814-B Clé combiné Schraubenschlüssel Kombination Chiave combinata Llave combinada	SHIM (0.015" AIR GAP) 22486 Cale (écart de 0,38 mm) Distanzscheibe (0,38 mm Luftspalt) Spessore (spinterometro 0,38 mm) Suplemento (espacio de 0,38 mm)	
SILASTIC (crankcase sealing) P824823 Silastio (étanchéité du carter) Silastio (Kubelgehäuse Dichtung) Silastio (sigillo di tenuta del carter) Silastio (sello del carter)	T25 TORX DRIVE BIT 24982-01 Foret torx T-25 T-25 Torx-Antriebsbit Punta Torx Drive T-25 Broca de empuje T-25 Torx	
PULLER-Magneto Rotor A-24747-A Extracteur, rotor magnéto Abziehwerkzeug-Magnetrotor Rotore d'estrazione a magnete Extractor-rotor de magneto	T27 TORX DRIVE BIT 18356-01 Foret torx T-27 T-27 Torx-Antriebsbit Punta Torx Drive T-27 Broca de empuje T-27 Torx	