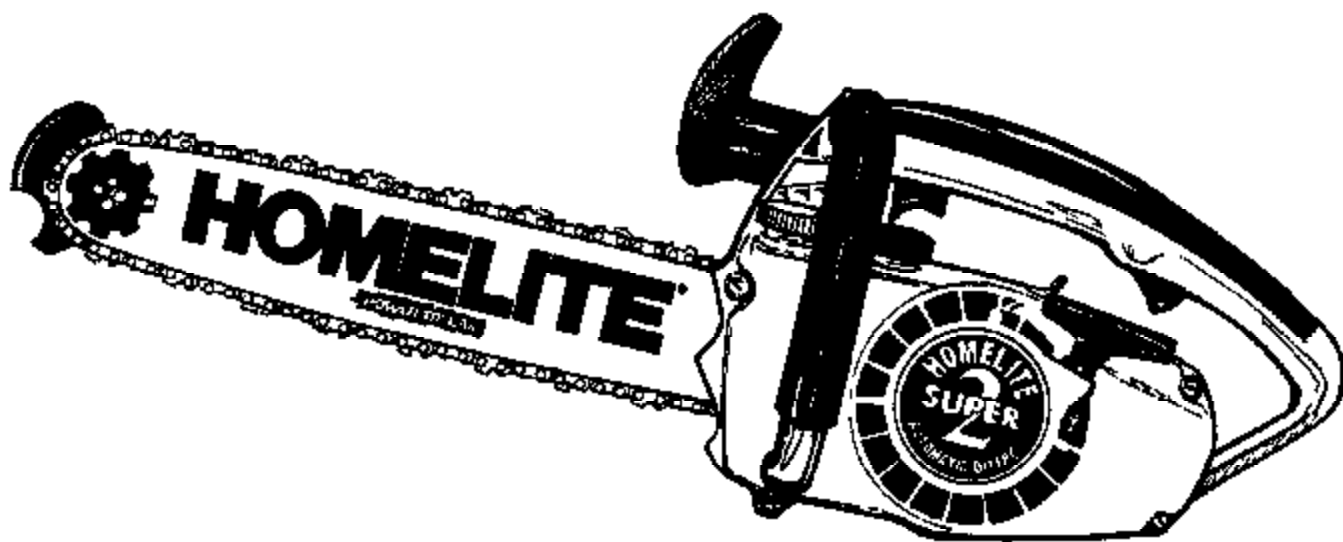


PART NO. 24983 REV. 2
Printed in U.S.A.
Price .35

PARTS LIST

HOMELITE®

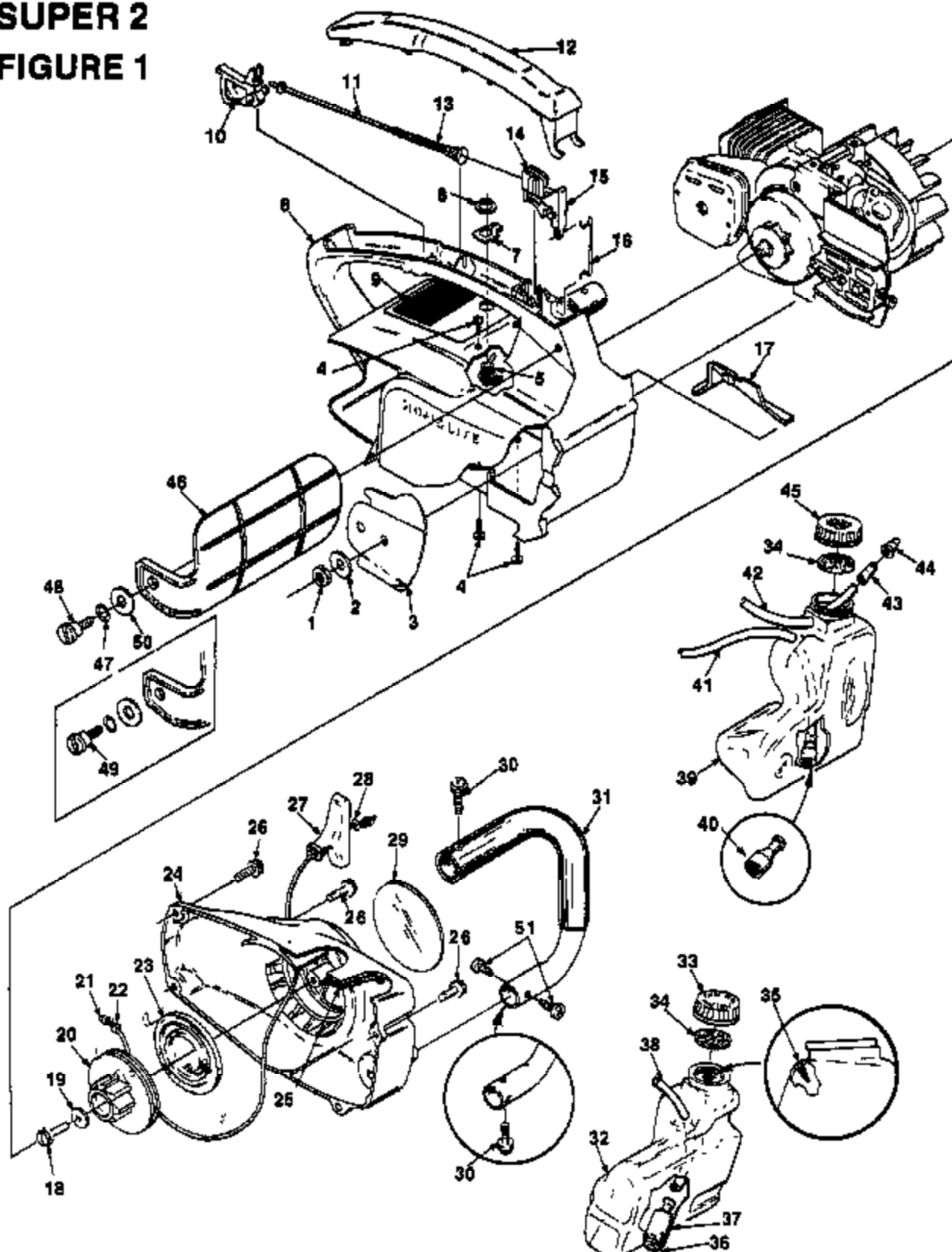
Super 2



Automatic Oiling
CHAIN SAW

SUPER 2

FIGURE 1



SUPER 2 **FIGURE 1**

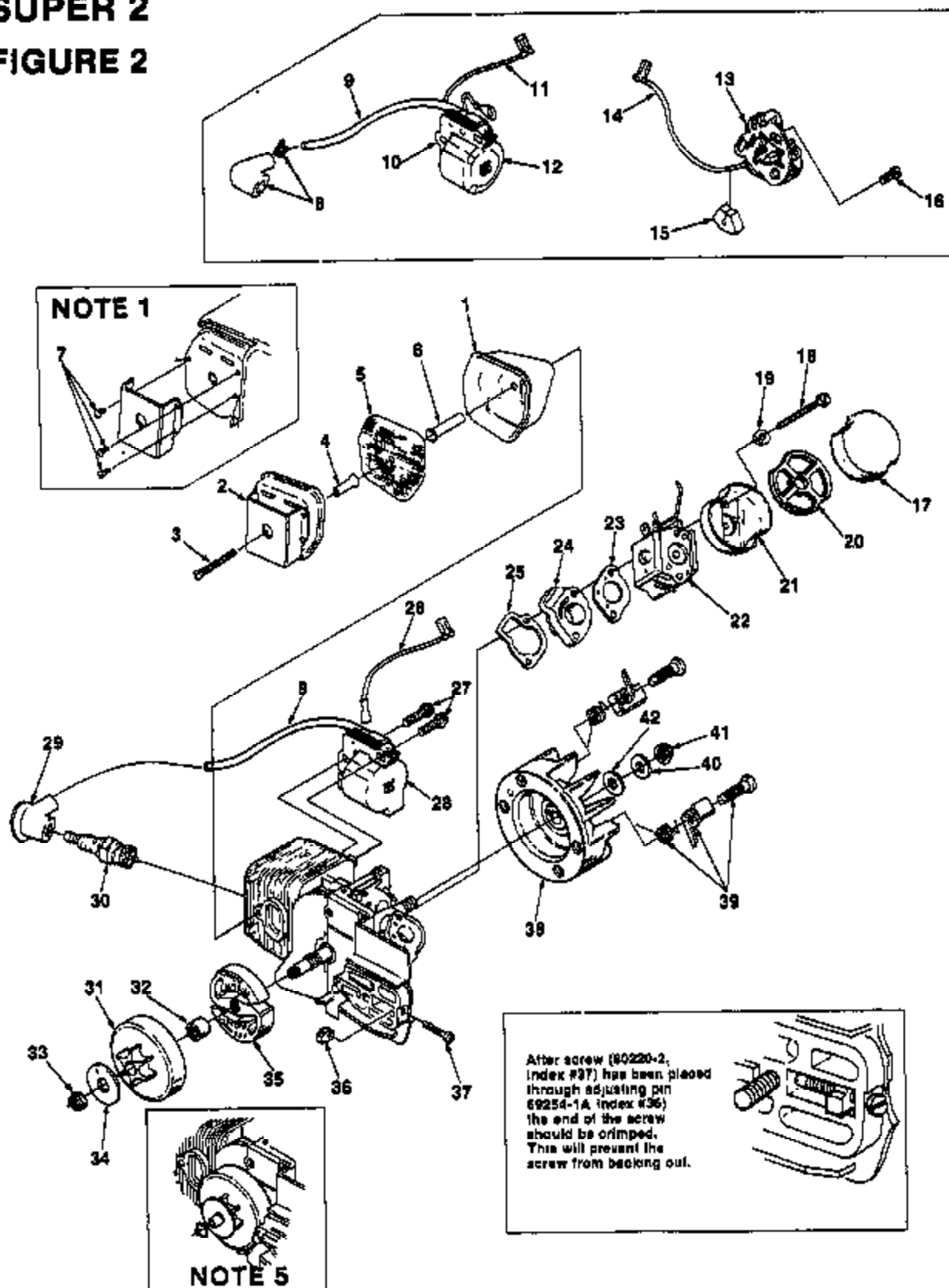
NO.	DESCRIPTION	PART NO.	QTY.	NO.	DESCRIPTION	PART NO.	QTY.
1	NUT- Guide bar 1/4-28	81065-2	1	35	VALVE- Check (duck bill)	88451	1
2	WASHER- Flat	88308-A	1	36	FILTER- Fuel	A-88823	1
3	PLATE- Guide bar	88360-1	1		Includes:		
4	SCREW- Pan hd., 10-24 x 1/2	86820	4	37	ELEMENT- Fuel	84083	1
5	SWITCH- Stop (grounding)	A-88888	1	38	LINE- Fuel 7 1/4"	70310-29	1
	Includes:			39	TANK- Oil	A-70888-A	1
6	NUT- Hex	72084-A1	1		Includes:		
7	PLATE- "On-Off"	70834	1	40	FILTER- Oil	A-88583	1
8	HOUSING- Engine	A-88882-B	1	41	LINE- Oil 6"	70309-24	1
	Includes:			42	LINE- Pressure	A-88358-B	1
8	PLATE- Starting instruction	70835	1		Includes:		
10	TRIGGER- Rear	88106-A	1	43	CONNECTOR- Oil	88559-B	1
11	ROD- Throttle	A-88186	1	44	VALVE- Check (duck bill)	88451	1
12	COVER- Handle	88140-A	1	45	CAP- Tank (oil) (black)		
13	SPRING- Throttle rod	88249	1		(Note 1)	A-70889-B	1
14	TRIGGER- Front	88106	1		Includes:		
15	LEVER- Throttle	88107	1		GASKET- Fuel filter cap		
16	ROD- Throttle (front)	88255-C	1		(Note 2) (See 34)	94839-A	1
17	COVER- Air filter	88263	1	46	GUARD- Hand (Note 3)	A-70795-B	1
18	SCREW- Hex washer hd. 10-32 x 5/8 (Magnesium Housing)	80704	1		Includes:		
	SCREW- Thread forming 13/84 x .750 (Plastic housing)	94565	1	47	WASHER- Curved spring	88894	1
19	WASHER- Flat (Magnesium housing)	88808-1	1	48	SCREW- Shoulder self tapping (10-32) (Magnesium housing)	95713	1
	WASHER- (Plastic housing)	94062	1	49	SCREW- Shoulder #10 thread forming (Plastic housing)	95714	1
20	PULLEY- Starter	88158-A	1	50	WASHER- Flat	88102	1
	PULLEY- Starter (alternate)	84562-A	1	51	SCREW- Pan hd., #8 x 1/2 (Plastic housing)	82348	2
21	ROPE- Starter #4, 34" long	A-88974-A	1				
	Includes:						
22	WASHER- Nylon	88862	1				
23	SPRING- Rewind	88217	1				
24	HOUSING- Rewind starter (Plastic housing)	A-84241	1				
	HOUSING- Rewind starter (Magnesium housing)	A-88540	1				
	Includes:						
25	FILTER- Fuel tank valve	88443	1				
26	SCREW- Hex 10-32 x 5/8	80704	4				
27	GRIP- Starter rope	70211	1				
28	WASHER- Flat	84025	1				
29	DECAL- Super 2	70240	1				
30	SCREW- Pan washer hd. 10-32 x 5/8 (Magnesium housing)	82239	2				
31	HANDLE BAR (Magnesium housing)	A-70219-A	1				
	HANDLE BAR (Plastic housing)	A-84971	1				
32	TANK- Fuel	A-70889-A	1				
	Includes:						
33	CAP- Tank fuel (red)						
	(Note 1)	A-70884-B	1				
	Includes:						
34	GASKET- Fuel filler cap (Note 2)	94835-A	1				

NOTE 1: Tanks with internal threads require A-70445 Fuel cap and A-70446 oil cap. If internal threads in tank are worn order new external threaded tank.

NOTE 2: Use 70826 Gasket in A-70889 and A-70894 external thread caps. Use 88685 gasket for caps with internal threads.

NOTE 3: For units with steel handguard, requires 70728 Belleville washer and 70748 spacer, 80572 screw 10-32 x 5/8 (magnesium housing).

SUPER 2
FIGURE 2



SUPER 2

FIGURE 2

NO.	DESCRIPTION	PART NO.	QTY.	NO.	DESCRIPTION	PART NO.	QTY.
1	MUFFLER	A-84051-B	1	28	MODULE- Ignition (solid state)	94711	1
	Includes				Includes		
2	CAP- Muffler (w/shield) (Note 1)	A-95426	1	29	LEAD- High tension (see index #8)	89326	1
	SPARK ARRESTOR	A-84139	1		TERMINAL- Spark plug (solid state) (Note 3)		1
	Includes			30	SPARK PLUG- Champion DJ-7J	88618-S	1
3	SCREW	82320	1	31	SPROCKET & DRUM (Standard) (6 tooth 37 and 375 chain)	A-70221-C	1
4	SPACER- (Short)	93899	1		Includes		
5	SCREEN- Spark arrester	D-83891	1	32	BEARING- Needle	88512	1
6	SPACER- (Long)	83960	1	33	NUT- Locking 5/16 - 24 (Note 3)	81112	1
7	SCREW- 4 x .250 (Note 1)	82342	3	34	WASHER- thrust (clutch)	95298	1
8	TERMINAL- Spark plug	A-33055	1	35	CLUTCH- "S"	A-70351-A	1
9	LEAD- High tension (Note 2)	89326	1	36	PIN- Adjusting (see insert)	89254-1A	1
10	CORE- Coil (Point ignition)	89324	1	37	SCREW- Adjusting (fil hd 8-32 x 1) (See insert)	80220-2	1
11	LEAD- Stop switch (Point ignition)	A-86051	1	38	ROTOR & STARTER PAWL (Solid state (Phelon) ROTOR & STARTER PAWL (Point ignition) (Phelon)	A-94717-A	1
12	COIL- Ignition (Point ignition) RETAINER- Coil (not shown) (Point ignition)	89323	1		Includes		
13	POINT SET- Breaker (point ignition)	A-89336	1	39	KIT- Starter pawl (Note 4)	A-70285-C	1
	Includes			40	WASHER- Lock	83002	1
14	LEAD- Electrical	70249	1	41	NUT- Rotor 5/16-24	81117	1
15	SEAL- Lead (point ignition)	89247	1	42	WASHER- Flat	84085-1	1
16	SCREW- Point set (point ignition)	88026	2				
17	FILTER- Air	88141	1				
18	SCREW- Hex hd 10-32 x 2 1/4	80481	2				
19	WASHER- Lock #10	83008-1	2				
20	RETAINER- Air filter	89457	1				
21	CUP- Air filter	88145	1				
22	CARBURETOR- HDS-85 (walbro)	A-84649-A	1				
	CARBURETOR- Zama (Q2S-H5)	A-88481	1				
23	GASKET- Carburetor	85018	1				
24	MANIFOLD- Intake	A-89373-A	1				
25	GASKET- Intake manifold	88143	1				
26	LEAD- Ground (solid state)	A-94721	1				
27	SCREW- Hex w/washer (8-32 x 3/4)	82245	2				

NOTE 1: Units with separate shield requires index #7 screws.
All new muffler caps A-95426 includes a shield welded to cap.

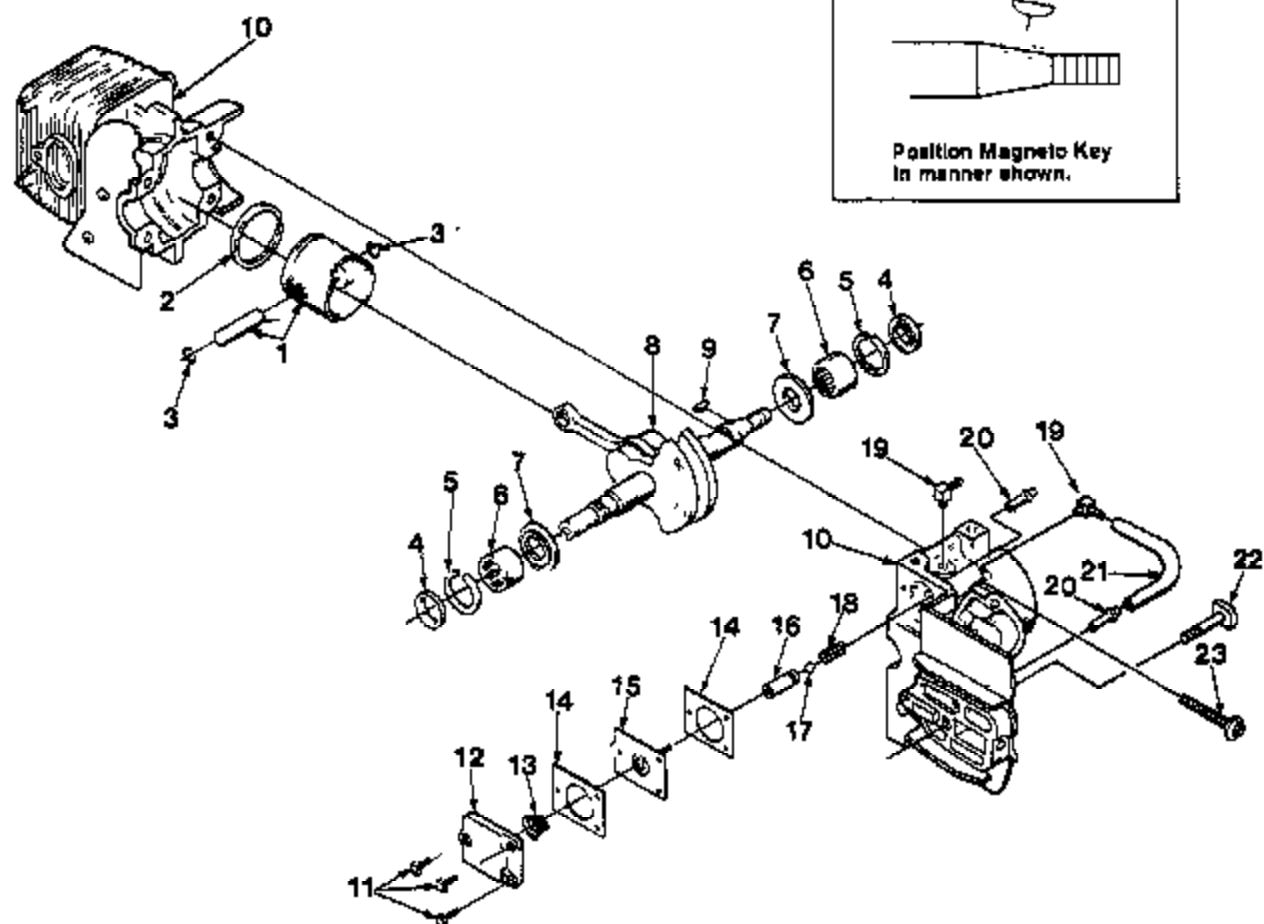
NOTE 2: For Solid State Ignition cut wire to 8 1/2".

NOTE 3: Use A-33055 for service replacement.

NOTE 4: Replacement starter pawl kit, item #39 includes an oversized pin, paint, stamp or mark to identify oversized pin when installing. Oversize pin can be installed lightly only once. If oversize pin is removed, the entire rotor assembly must be replaced.

NOTE 5: Retaining ring 83972 required for crankshafts without threaded clutch end.

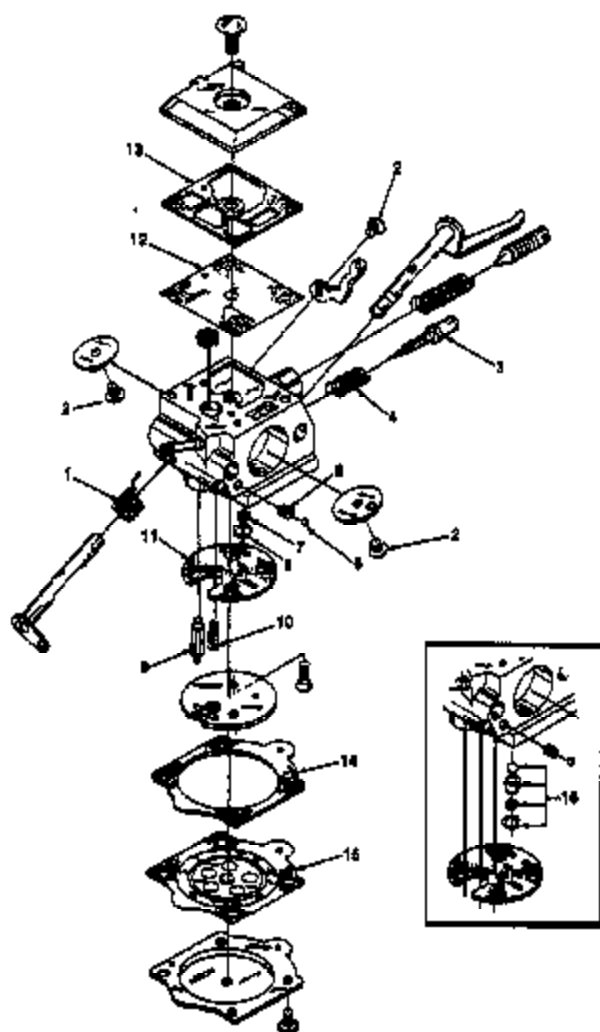
SUPER 2 **FIGURE 3**



NO.	DESCRIPTION	PART NO.	QTY.	NO.	DESCRIPTION	PART NO.	QTY.
1	PISTON & PIN Includes	A-70224-A	1	12	COVER- Oil pump	88224-1C	1
2	PISTON RING	70206	1	13	SPRING- Oil pump	88447	1
3	RING- Piston pin retaining	86261	2	14	GASKET- Oil pump	88244-1	2
4	SEAL	94638	2	15	PLUNGER- Oil pump	A-12368-B	1
5	SPACER- Seal	88407	2	16	BODY- Oil pump	88343-1	1
6	BEARING- Needle	12530	2	17	BALL- Check valve	80051	1
	BEARING- Needle (opt.)	88513	2	18	SPRING- Check valve	88670	1
7	WASHER- Thrust	89093-B	2	19	FITTING- Oil line	70204	2
8	CRANKSHAFT (C/D Ignition) CRANKSHAFT (point ignition) Includes	A-88384	1	20	FITTING- Tube	88833	2
	NUT (Not shown)	81112	1	21	LINE- Oil	70161	1
9	KEY- Magneto (see above)	88250	1	22	BOLT- Guide bar	88195	1
10	CYLINDER & CRANKCASE (C/D) CYLINDER & CRANKCASE (point ignition) Includes	A-95072	1	23	SCREW- Sem hex hd 8-32 x 1	88044	4
11	SCREW- Pan hd. 8-32 x 3/8	80571	3				

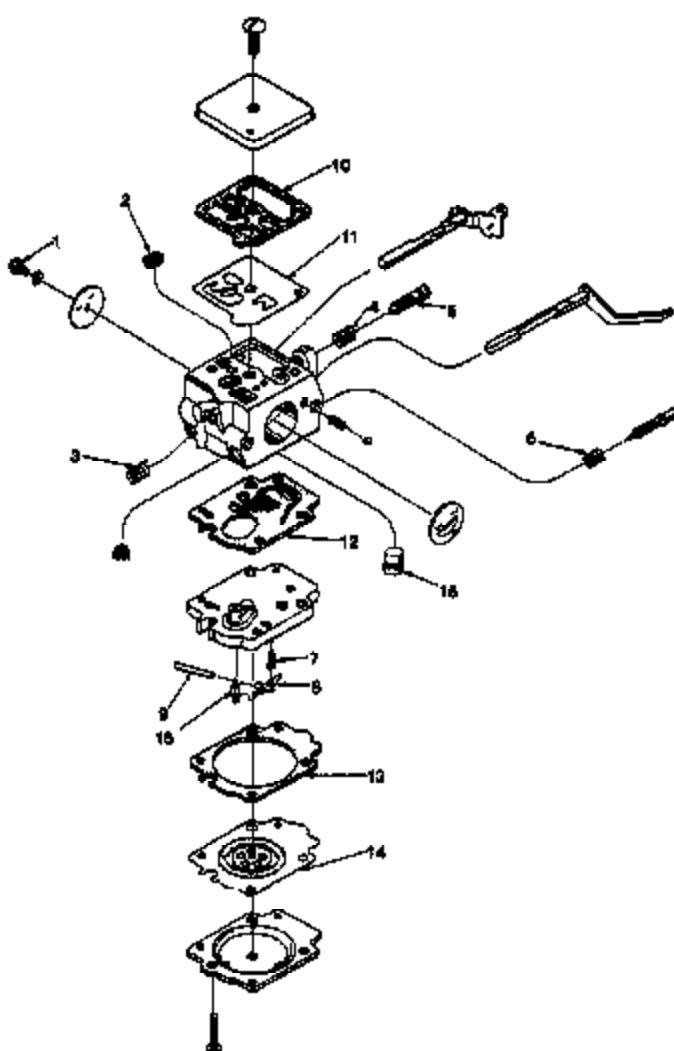
SUPER 2

CARBURETOR **A-94649-A** **HDC-65**



- 94056 Repair Kit (Includes 1-15)
 94701 Gasket/Diaphragm Kit (Includes 11-15)
 93910-A Check valve repair kit (18)
 93188 Circuit Plate- High altitude .029 not shown
 1229 Valve- Inlet needle (9)

CARBURETOR **A-96481 (ZAMA)** **C2S-H5**



- 96484 Repair Kit (1-16)
 96485 Diaphragm/Gasket Kit (10-14)

ACCESSORIES

GASKET- Oil pump body (repair)	69586
KIT- Repair (sprocket nose bar)	A-70239-B
KIT- Spark arrester (use with	
A-93686 muffler and A-99253-1 muffler)	A-69586-B
LINE- Fuel (10 ft. length)	70310-99
LINE- Oil (10 ft. length)	70309-99
SAFE-T-TIP (standard)	A-70775-A
Includes:	
SCREW (Special)	93695
GREASE- Multi-use	
(Sprocket bearing - PT guide bar)	17193
CARRYING CASE	94215-A
STARTING ROPE- 250 ft. reel #4	99848

TOOLS

SILASTIC (crankcase sealing)	24823
PLIERS- Tru-Arc (sprocket retaining ring)	17188
PULLER- Magneto rotor	A-24747-A
Includes:	
BOLT- 5/16-18 x 1 3/4 (1)	80288
NUT- Hex 5/16-18 (2)	81196
WRENCH- Spanner (clutch)	A-93781
Includes:	
PIN- Clutch spanner	23717-A
TOOL- Carburetor check valve installation	24972

HOMELITE DIVISION OF TEXTRON INC.

P.O. BOX 7047
14401 CAROWINDS BOULEVARD
CHARLOTTE, N.C. 28217

HOMELITE **TEXTRON**

Homelite Division of Textron Inc