

Homelite®

PARTS LIST

SXL-AO **CHAIN SAWS**

UT10045-E

UT10650-B .. (Int'l)

UT10712 .. (Old Blue)

UT10739 .. (Big Red)

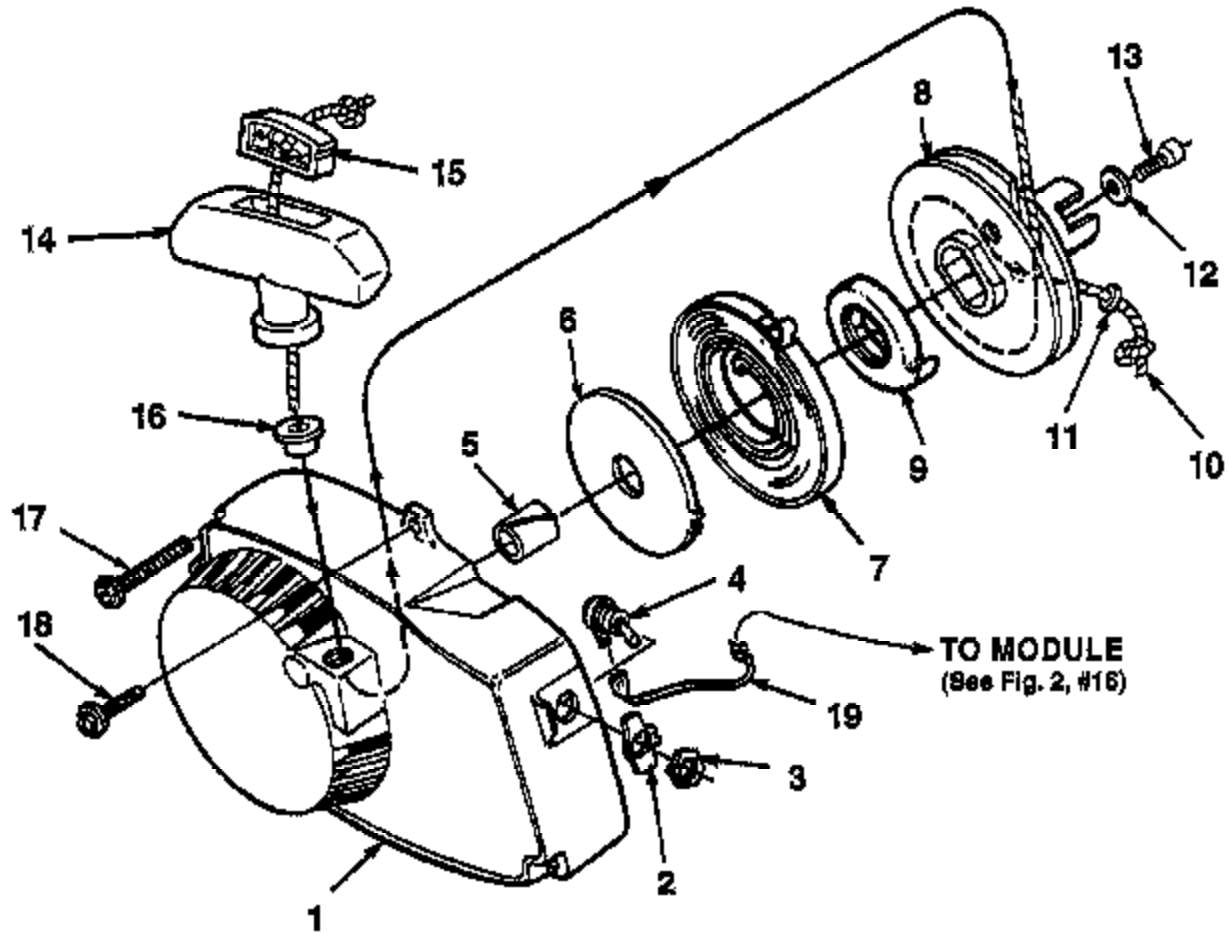
IF YOUR UNIT IS NOT LISTED ABOVE, SEE CHART ON PAGE 2 TO FIND PARTS LIST NUMBER FOR YOUR UNIT.

PART NO. 19834

Printed in U.S.A.

STARTER

Figure 1



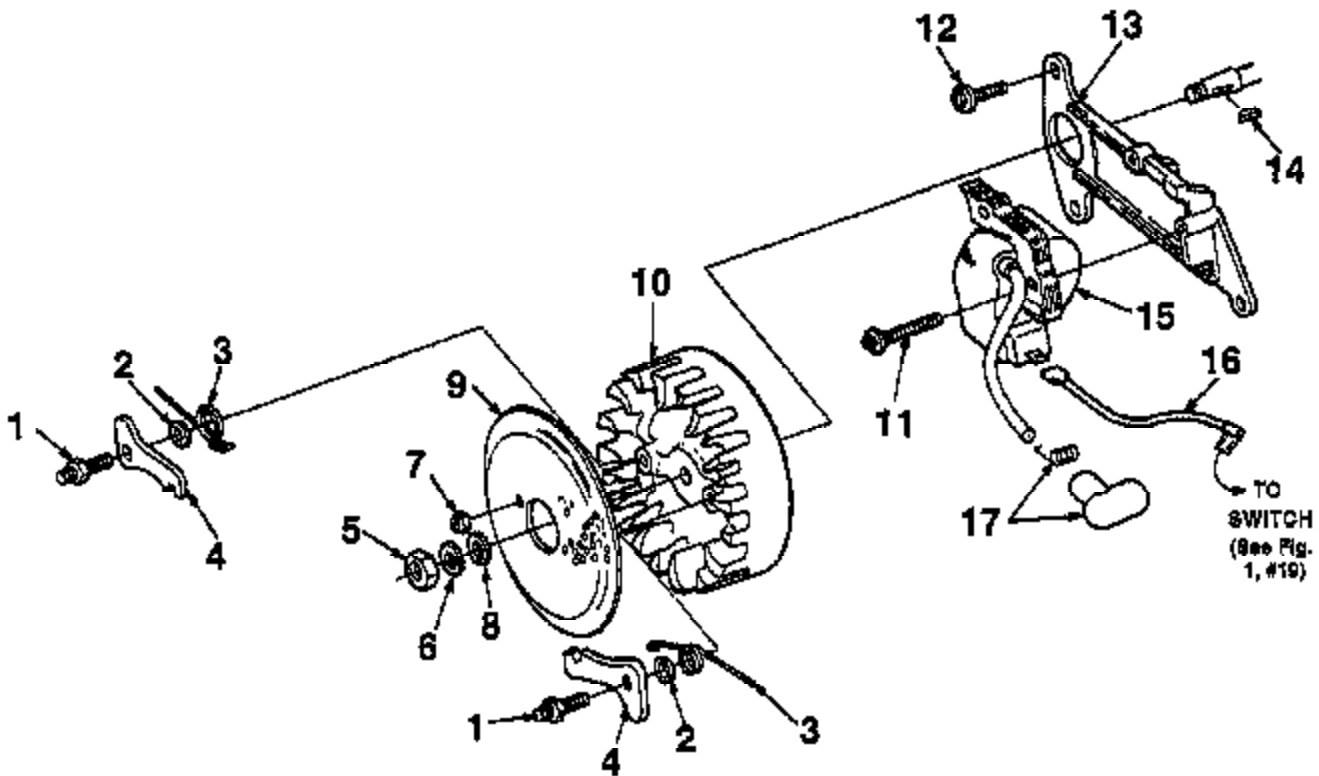
NO.	PART NO.	DESCRIPTION	Qty.
1a	• A 02022	STARTER-Complete (UT10712)	1
1b	• A 07027	STARTER-Complete	1
2	95231	PLATE- On & Off	1
3	72084 A1	NUT- Hex Locking	1
4	66631	SWITCH & LEAD	1
5	84443	BUSHING- Starter	1
6	66636 B	SHIELD- Spring (inner)	1
7	A 94842	SPRING- Recoil	1
8	• A 84448	PULLEY- Starter	1
9	94827	BUSHING- Spring	1
10	• A 93875	ROPE- Starter (48")	1
11	98962	WASHER- Flat Nylon	1
12	58783	WASHER- Retainer	1
13	80848	SCREW- Hex (10-32 X 1/2")	1
14	• A 88982 B	GRIP- Starter Rope	1
15	70018 A	INSERT	1
16	87177	BUSHING- Rope	1
17	68983	SCREW- Hex (12-24 X 11/16)	8
18	80899	SCREW- Hex (12-24 X 9/16)	1
19	A 94880	LEAD- Ground (Solid State)	1

• ASSEMBLIES

ALWAYS FURNISH MODEL AND SERIAL NUMBERS WHEN ORDERING PARTS.

Figure 2

IGNITION

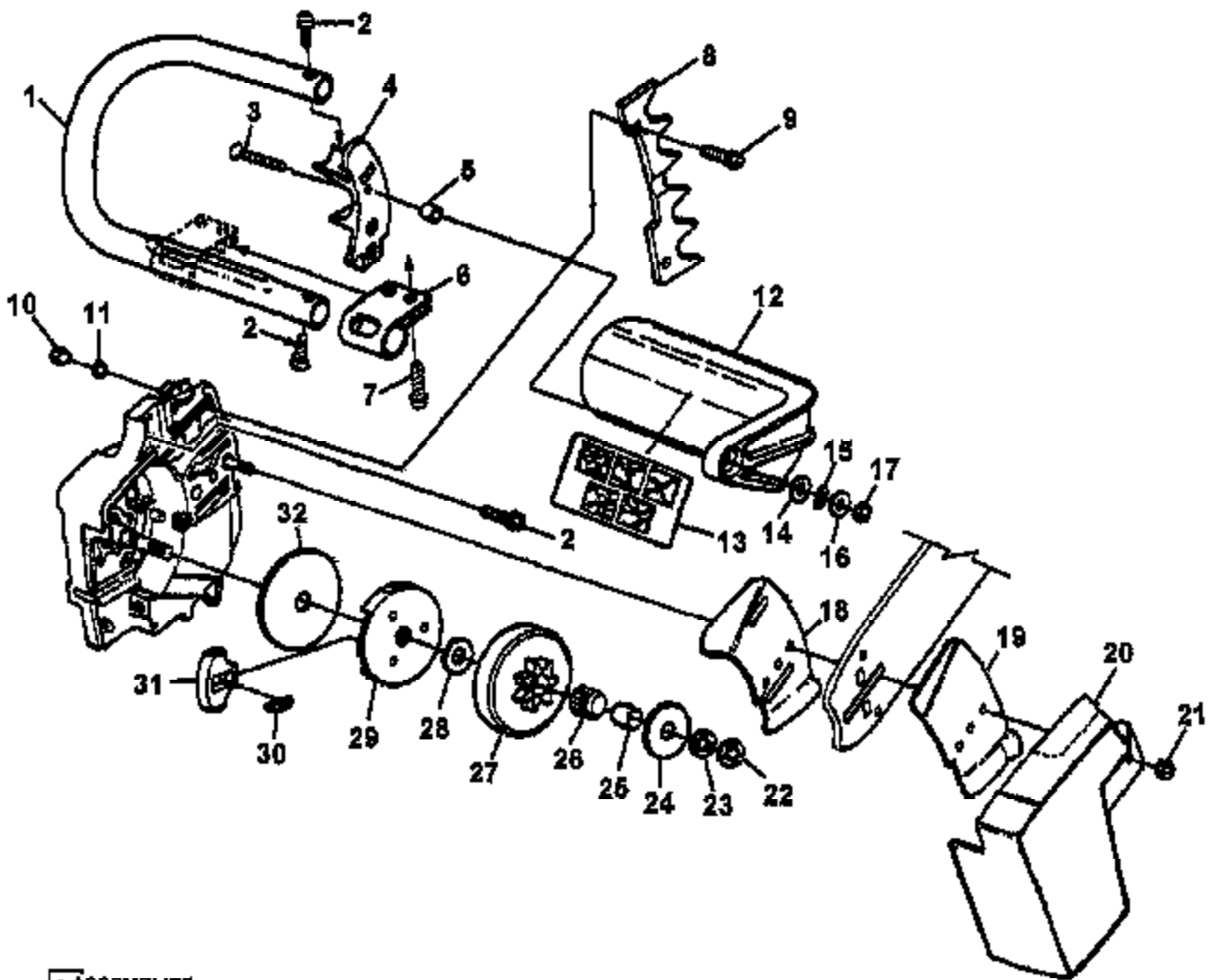


NO.	PART NO.	DESCRIPTION	Qty.
1	68757 E	STUD-Shoulder	2
2	70901	WASHER-Lock	2
3	01101	SPRING-Starter Pawl	2
4	58755 A	PAWL-Starter	2
5	81117	NUT-Hex (5/16-24)	1
6	83002	WASHER-Lock (5/16)	1
7	81206	NUT-Center Lock (#10-32)	2
8	84068	WASHER-Flat (5/16)	1
9	58765	SCREEN-Starter	1
10	94588	ROTOR-Magneto	1
11	82248	SCREW-Hex Washer Hd. (8-32 X 3/4)	2
12	80898	SCREW-Hex Hd. (12-24 X 8/16)	8
13	94328 1	PLATE-Ignition Coil Mtg. (Solid State)	1
14	76078	KEY-Woodruff	1
15	94588 AS	MODULE & CORE	1
16	A 94850	LEAD-Ground (Solid State)	1
17	A 33055	TERMINAL-High Tension	1

• ASSEMBLIES

HANDLE and CLUTCH

Figure 3

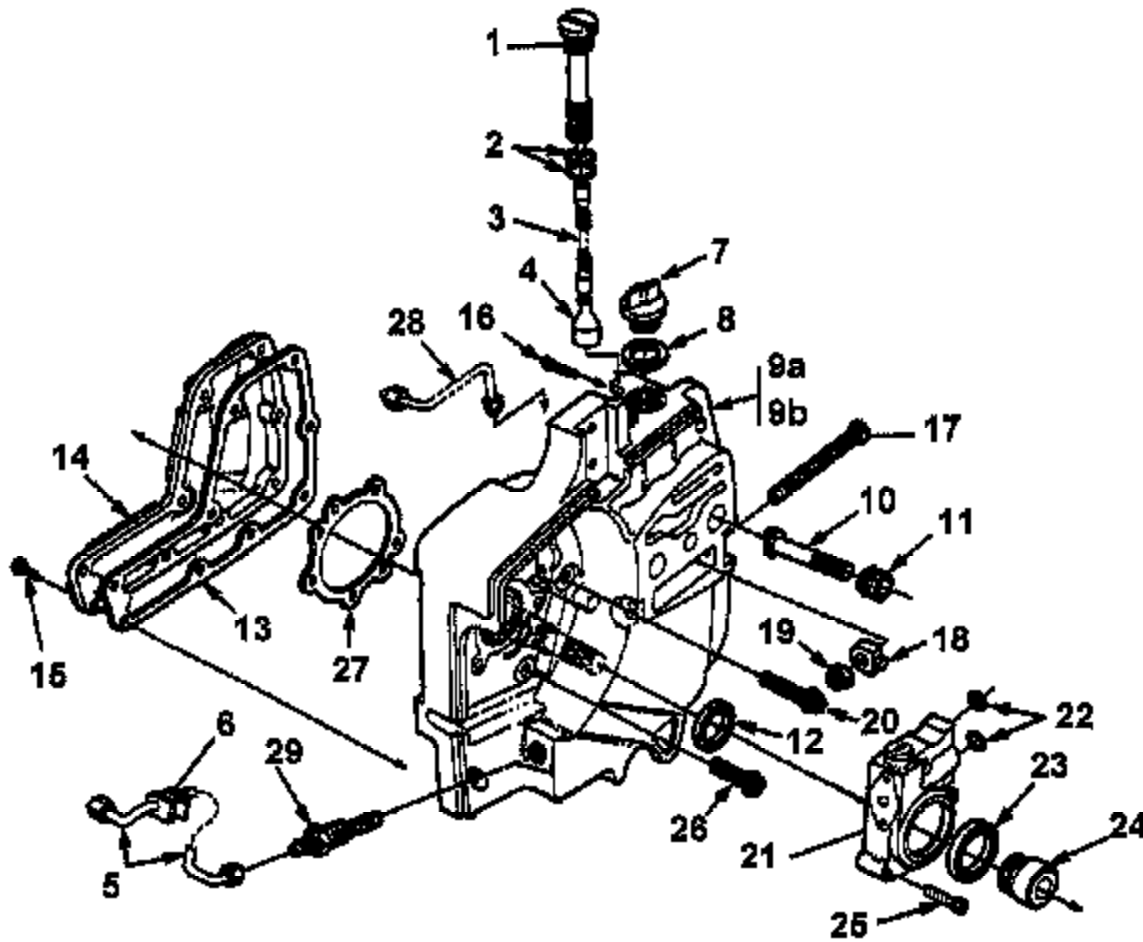


• ASSEMBLIES

NO.	PART NO.	DESCRIPTION	Qty.	NO.	PART NO.	DESCRIPTION	Qty.
1	A 88080	HANDLE BAR-Flush Cut	1	18	A 70618	GUIDE BAR PLATE KIT	1
2	80428 1	SCREW-Soo Hd. (1/4-20 X 1 1/2)	1	19	70399	PLATE-Guide Bar (Inner)	1
3	82223	SCREW-Flat Hd. (12-24 X 1 1/4")	4	19	70400	PLATE-Guide Bar (Outer)	1
4a	59851 19	BRACKET-Handle Bar	1	20a	58750 28	COVER-Drive Case	1
4b	59851 18	BRACKET-Handle Bar (UT 10712)	1	20b	58750 25	COVER-Drive Case (UT10712)	1
5	85937	SPACER	1	21	81088 2	NUT-Hex (3/8-16)	1
6	83291 A	CLAMP-Handle Bar	1	22	81124 A	NUT-Lock (3/8-24)	1
7	80867	SCREW-Mach. Hex Hd. (12-24 X 3/4")	4	23	83018	WASHER-Lock (3/8")	1
8	A 58043	BUMPER SPIKE KIT (Accessory)	1	24	65084	WASHER-Thrust (Outer)	1
9	80867	SCREW-Hex (12-24 X 3/4")	2	25	65748 B	RACE-Inner	1
10	81088	NUT-Hex (12-24)	2	26	84124	BEARING-Roller	1
11	70901	WASHER-Lock (#12)	2	27	A 85459	SPROCKET & DRUM (7 Tooth Std)	1
12	A 95088 A	HAND GUARD	1	28	58833	WASHER-Thrust (Inner)	1
13	02981	DECAL-Hand Guard	1	28	A 89490 C	CLUTCH ASSEMBLY	1
14	84065	WASHER-Flat	1	28	85750 1B	PLATE-Clutch	1
15	98757	WASHER-Spring Wave	1	30	67053	SPRING-Clutch	3
16	95835	WASHER-(5/16)	1	31	89481	SHOE-Clutch	3
17	81225	NUT (12-24)	1	32	95054	COVER-Clutch	1

ALWAYS FURNISH MODEL AND SERIAL NUMBERS WHEN ORDERING PARTS.

Figure 4 OIL PUMP and DRIVECASE



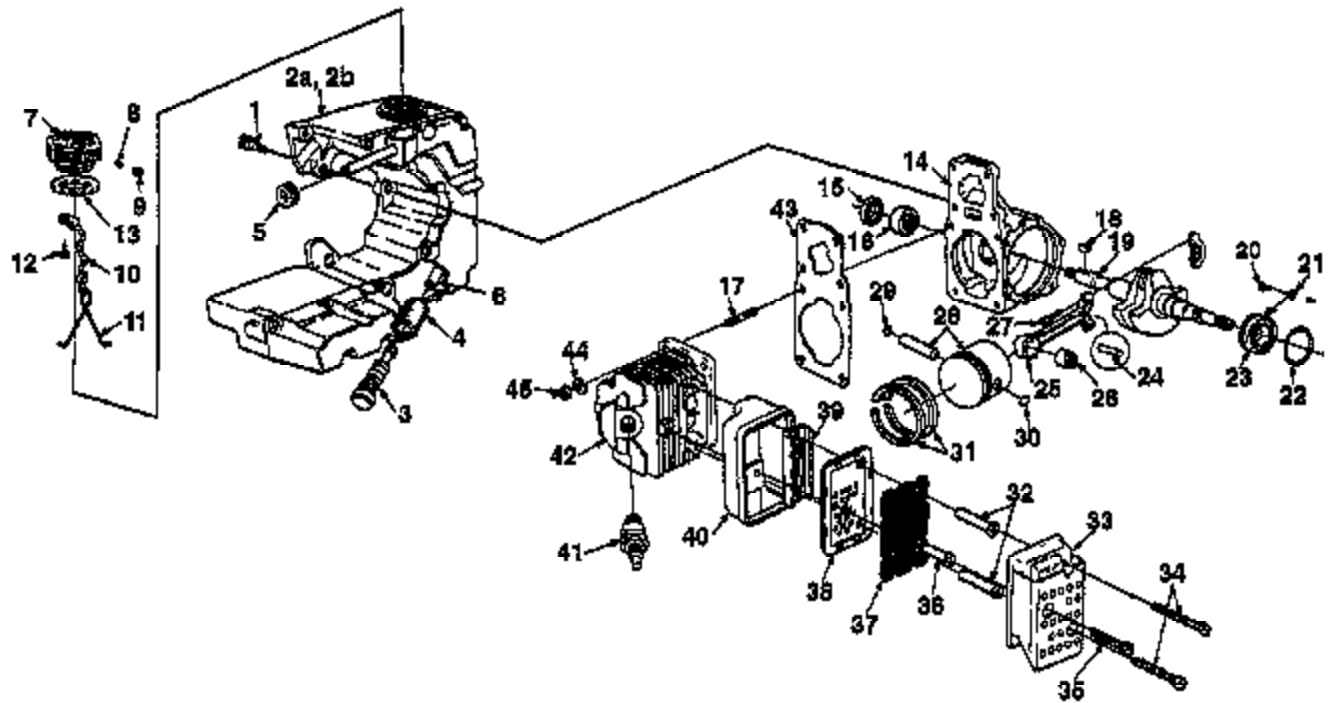
• ASSEMBLIES

NO.	PART NO.	DESCRIPTION	Qty.	NO.	PART NO.	DESCRIPTION	Qty.
1	•A 88371	OIL FILTER ASSEMBLY	1	17	83228	SCREW-Guide Bar Adjusting	1
2	88328 2	TUBE-Oil Line	1	18	83039	PIN-Bar Adjusting	1
3	58785	°O° RING	1	19	81204	NUT-Lock (1/4-20)	1
4	70308 09	TUBING-Rubber (2 1/4")	1	20	80864	SCREW-Hex (12-24 X 1")	1
5	•A 88599	FILTER-Oil	1	21	•A 00007 A	PUMP-Automatic Oil	1
6	•A 58819	LINE-Oil	1	22	88074	°O° RING	2
7	58794	GROMMET	1	23	88828	SEAL-Felt	1
8	•A 83717 C	CAP-Filler Oil	1	24	00001	WORM GEAR, OIL PUMP	1
9	88807	GASKET	1	25	82248	SCREW-Fil (8-32 X 3/4")	3
9a	A 02033	DRIVECASE ASSEMBLY(UT10712)(NOTE 1)	1	26	80889	SCREW-Hex (12-24 X 8/16)	4
9b	•A 58830 J	DRIVECASE ASSEMBLY	1	27	83366	GASKET-Crankcase	1
10	87475	STUD-Guide Bar (3/8)	2	28	A 58808	LINE-Oil (Discharge)	1
11	87476	INSERT-Threaded	2	29	A 58804 A	FILTER-Oil (Manual Oil)	1
12	88308 B	SEAL	1				
13	58710	GASKET-Oil Reservoir	1				
14	88483 3	COVER-Oil Reservoir	1				
15	82564	SCREW-Thread Form. (8 X 1/2")	9				
16	80742	SCREW-Set (Not Shown)	1				
	88301	PIN-Colter	1				

NOTE 1: Drivecase Only. No Additional Parts Included.

ENGINE and FUEL TANK

Figure 5



• ASSEMBLIES

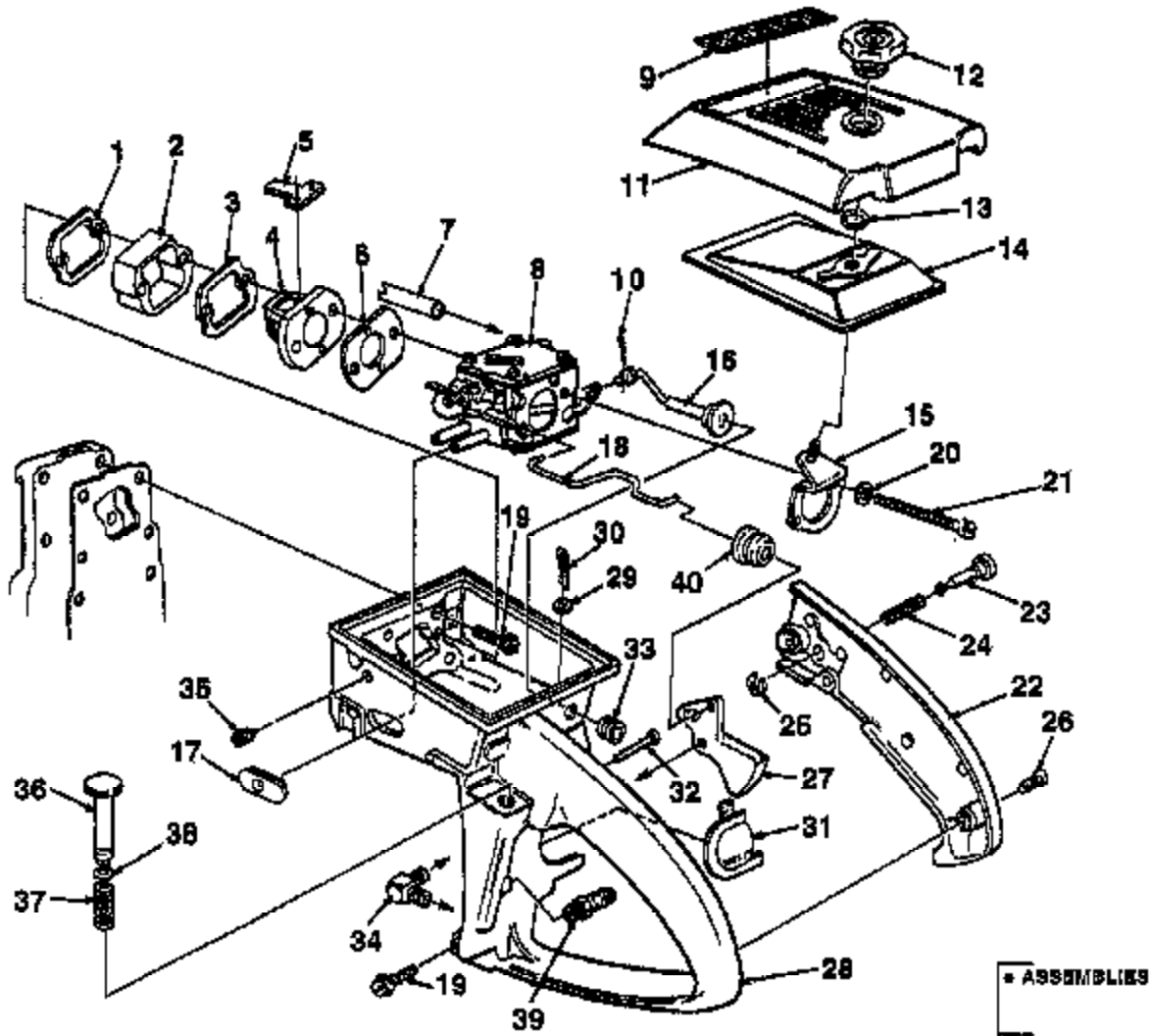
NO.	PART NO.	DESCRIPTION	Qty.
1	83407	SCREW-Shoulder	3
2a	A 83902 7	FUEL TANK (UT10712) (NOTE 2)	1
2b	A 88345 B	FUEL TANK	1
3	A 89923	FILTER-Fuel	1
4	84083	FELT FILTER	1
6	89048	GROMMET	1
6	70810 37	TUBING-Rubber (Ø 1/4")	1
7	A 89488 1	CAP-Fuel Filler	1
8	89481	VALVE-Check	1
9	89464	FILTER-Fuel Cap	1
10	89502	CHAIN-Bead	1
11	88535	RETAINER	1
12	82286 A	SCREW-Pen Hd. (#8 X 1/4")	1
13	89501	GASKET-Fuel Filler Cap	1
14	A 85788	CRANKCASE	1
15	12282 A	SEAL	1
16	89868	BEARING	1
17	88127 A	STUD-Cylinder	4
18	78078	KEY-Woodruff	1
19	93585	CRANKSHAFT	1
20	70306	SCREW-Torx	2
21	89706	WASHER-Lock	2
22	8818 A	RING-Retaining	2
23	88190	BEARING-Ball	2

NO.	PART NO.	DESCRIPTION	Qty.	
24	A 89054	ROLLER SET (31)	1	
25	A 88477 A	ROD-Connecting	1	
26	89889	BEARING	1	
27	89919	SCREW-Cap Soc. Hd.	2	
28	A 88438	PISTON & PIN	1	
29	75120	RING-Retaining	1	
30	84818	RING-Retaining	1	
31	89498 1A	PISTON RING	2	
	B	A 84218 A	MUFFLER ASSEMBLY	1
32	89983 01	SPACER-Muffler	2	
33	A 88888	CAP-Muffler & Shield	1	
34	84128	SCREW-Hex Hd. (12-24 X 2 1/4")	2	
35	84128	SCREW-Hex Hd. (12-24 X 1 7/8")	1	
36	89988 02	SPACER-Muffler	1	
37	93979	SCREEN-Spark Arrester	1	
38	88980	BAFFLE-Muffler	1	
39	84133 A	PLATE-Muffler	1	
40	88981	BODY-Muffler	1	
41	88647 B	SPARK PLUG (CJ8)	1	
42	A 88714	CYLINDER	1	
43	88771	GASKET - Cylinder	1	
44	82081	WASHER-Lock (1/4")	4	
45	88212	NUT (1/4 - 28)	4	

NOTE 2 : Fuel Tank Only (Old Blue). No Additional Parts Included.

ALWAYS FURNISH MODEL AND SERIAL NUMBERS WHEN ORDERING PARTS.

Figure 6 THROTTLE HANDLE and CARBURETOR



NO.	PART NO.	DESCRIPTION	Qty.	NO.	PART NO.	DESCRIPTION	Qty.
1	59274	GASKET-Spacer	1	22b	• A 06727	COVER-Throttle Handle	1
2	59718	SPACER-Heat Dam	1		67752	BUSHING-Pin (Not Shown)	1
3	63260 A	RETAINER-Reed Valve	1	23	95671	PIN-Throttle Latch	1
4	63253	SEAT-Reed Valve	1	24	58406	SPRING-Throttle Latch	1
5	59678 B	VALVE-Reed	4	25	58408	RING-Retaining	1
6	59722	GASKET-Carburetor	1	26	80560	SCREW-Pan (8-32 X 1/2")	2
7	70810 37	LINE-Fuel (3/4")	1	27	58858 A	TRIGGER-Throttle	1
8	A 66371 C	CARBURETOR-Walbro	1	28a	59244 12	THROTTLE HANDLE (UT10712) (NOTE 3)	1
	A 07048	CARBURETOR-Zama	1	28b	• A 06728	THROTTLE HANDLE	1
9	09738	LABEL-Homelite®	1	29	63290	WASHER-Felt	1
10	86324	PIN-Cotter	1	30	86801	PIN-Cotter	1
11	58773 9A	COVER-Air Filter	1	31	93209	SHIELD-Spark Plug	1
12	A 66272	NUT-Air Filter Cover	1	32	94142	PIN, Oil Plunger Retaining	1
13	59319 A	RING-Retaining	1	33	A 59011	VALVE-Check	1
14	63689 A	ELEMENT-Air Filter	1	34	63802 B	SCREW-Idle	1
15	A 59822 B	BRACKET-Mounting	1	35	58362	GROMMET KIT	1
16	86130 1	ROD-Choke	1	36	• A 93783	PLUNGER-Spring	1
17	A 07047	GROMMET KIT	1	37	59293	SPRING-Compression	1
18	59763	ROD-Throttle	1	38	74388	*O* RING	1
19	80891	SCREW-Hex (12-24 X 7/8")	6	39	A 59616	VALVE-Check	1
20	83046	WASHER-Lock (#10)	2	40	67694	BOOT-Throttle Rod	1
21	80921	SCREW-Hex (10-32 X 2 11/16")	2				
22a	59779 12	COVER-Throttle Handle (UT10712) (NOTE 3)	1				

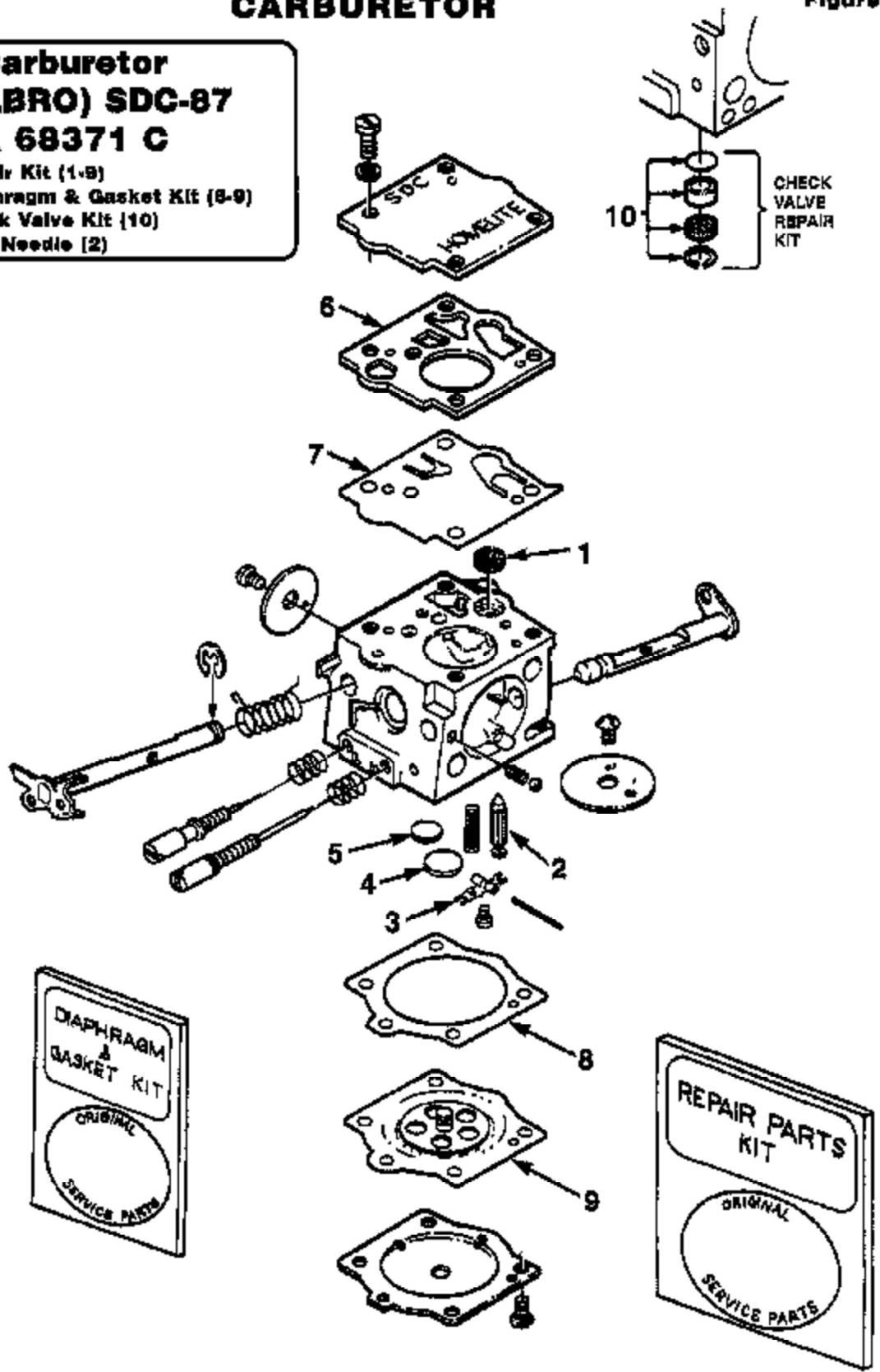
NOTE 3 - Painted Casting Only. No Additional Parts Included.

CARBURETOR

Figure 7

**Carburetor
(WALBRO) SDC-87
A 68371 C**

67020	Repair Kit (1-9)
98630	Diaphragm & Gasket Kit (8-9)
90310 B	Check Valve Kit (10)
87942	Inlet Needle (2)



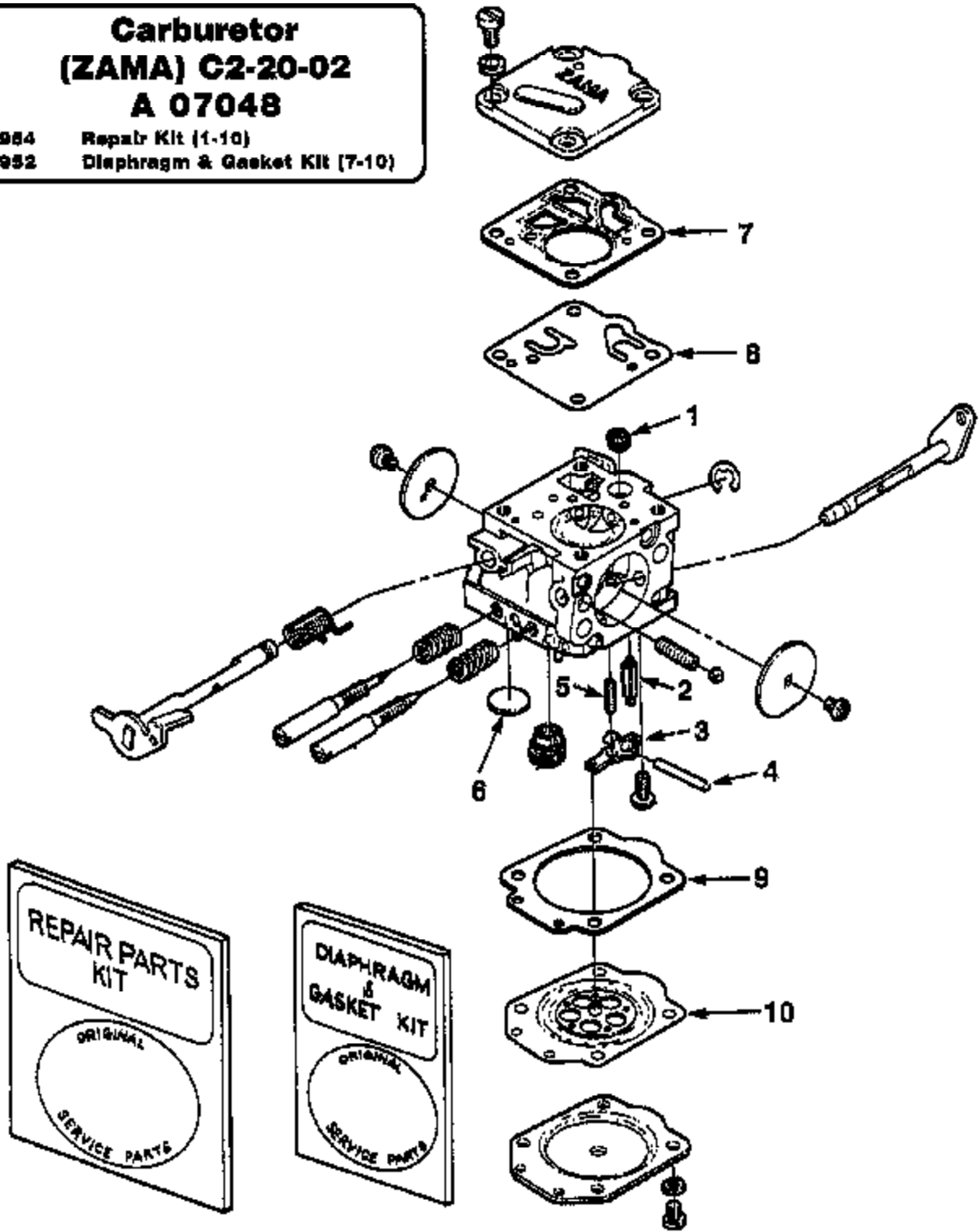
ALWAYS FURNISH MODEL AND SERIAL NUMBERS WHEN ORDERING PARTS.

Figure 8

CARBURETOR

**Carburetor
(ZAMA) C2-20-02
A 07048**

94954 Repair Kit (1-10)
94952 Diaphragm & Gasket Kit (7-10)



ALWAYS FURNISH MODEL AND SERIAL NUMBERS WHEN ORDERING PARTS.

TOOLS & ACCESSORIES

TOOLS FOR THE SXL-AO	
ANVIL - Crankshaft	23848 4
PLUG - Seal assembly - Drive & Crankcase	23758
PLUG - Seal Installation - Drivecase assembly	23845
PULLER - Magneto Rotor	A 24260
SLEEVE - Seal protecting	23844
SLEEVE - Seal protecting - Crankcase	23758
SLEEVE - Seal Installation - Drive & Crankcase	23800
WRENCH - Spanner to assemble & disassemble Clutch	A 23934
PIN	23954
WRENCH - Combination	A 24824
WRENCH - Insert	A 24322
TOOL - Clutch removal (for Clutch Conversion Kit)	A 17146
BIT - Driver torx 1/4" shank	24982 01
BIT - Driver torx 5/16" shank	24982 02

ACCESSORIES		QTY.
CLUTCH CONVERSION KIT	A 86745	.. 1
Includes:		
SHOE - Clutch	A 83832 B	.. 3
SPIDER - Clutch	93839	.. 3
SPRING - Clutch	93814 A	.. 3
SPROCKET & DRUM	A 95465	.. 1
THRUST WASHER	93643	.. 1
THRUST WASHER	93680	.. 1
THRUST WASHER	85084	.. 1
MANUAL OIL PUMP KIT	A 65866	.. 1
(Prior to S/N 50440501)		
Includes:		
BUTTON	57269 1	.. 1
OIL LINE	A 59819	.. 1
Includes:		
GROMMET	58794	.. 1
VALVE - Check	A 59618	.. 1
FILTER - Oil Intake	A 59804 A	.. 1
PLUNGER	A 57834 10	.. 1
Includes:		
"O" RING	74388	.. 1
"O" RING	69074	.. 1
SPRING	59293	.. 1
SAFE-T-TIP® KIT (Standard)	A 70790 B	.. 1
Includes:		
SCREW	82338	.. 1
CARRY CASE	A 01502 A	.. 1
REEL - Starting Rope (250 Ft.) (#5)	57084 1	.. 1
INSERT KIT (for Drivecase & Barstuds)	A 70370 A	.. 1
TUBING - Rubber (10 Ft.) (Fuel & Oil) ...	70310 88	.. 1
TUBING - Rubber (100 Ft.) (Fuel & Oil) .	70309 88	.. 1

CUSTOMER ASSISTANCE

FOR THE LOCATION OF YOUR NEAREST HOMELITE SERVICING DEALER
IN THE UNITED STATES, PUERTO RICO, AND THE VIRGIN ISLANDS,

CALL: 1-800-242-4672

HEADQUARTERS

Homelite, Inc.
P.O. BOX 7047
CHARLOTTE, N.C. 28241

OVERSEAS OFFICES

NETHERLANDS

Homelite Netherlands B.V.
A Deere & Company Affiliate
Haverstraat 24
2153 GB Nieuw Vennepe
The Netherlands

FRANCE

Homelite Atlantic SARL
Groupe Deere & Co.
BP 7011
98050 Cergy Pontoise Cedex
France

AUSTRALIA

Homelite Pacific Ltd.
A Deere & Company Affiliate
ACN 008 883 538
94 Rushdale Street
P.O. Box 555 MDA
Australia

CANADIAN OFFICES

Homelite Canada Limited
Homelite Canada Limitée

A Deere & Company Affiliate/
Une Filiale de Deere & Company
1850-55eth Avenue
Leahine, Québec, Canada H8T 3J8
1-800-363-5715

UNIT 212-214, 590 Ebury Place
New Westminster, B.C. V3M 6K7
1-800-667-3128

20-D Voyager Court South
Etobicoke, Ontario M9W 5M7
1-800-465-2248