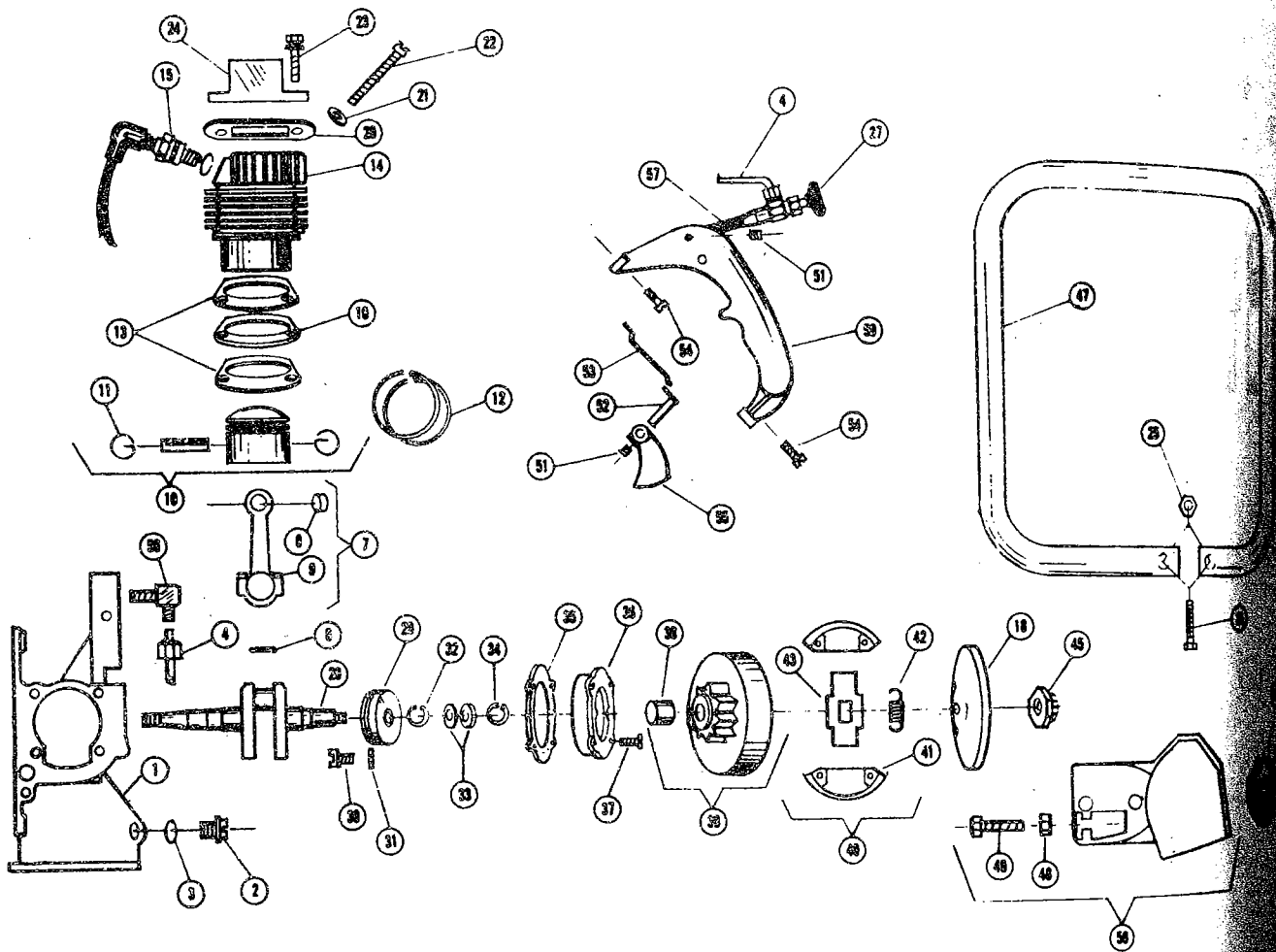


POULAN CHAIN SAWS—MODEL SUPER 33

4/71

FIGURE 2

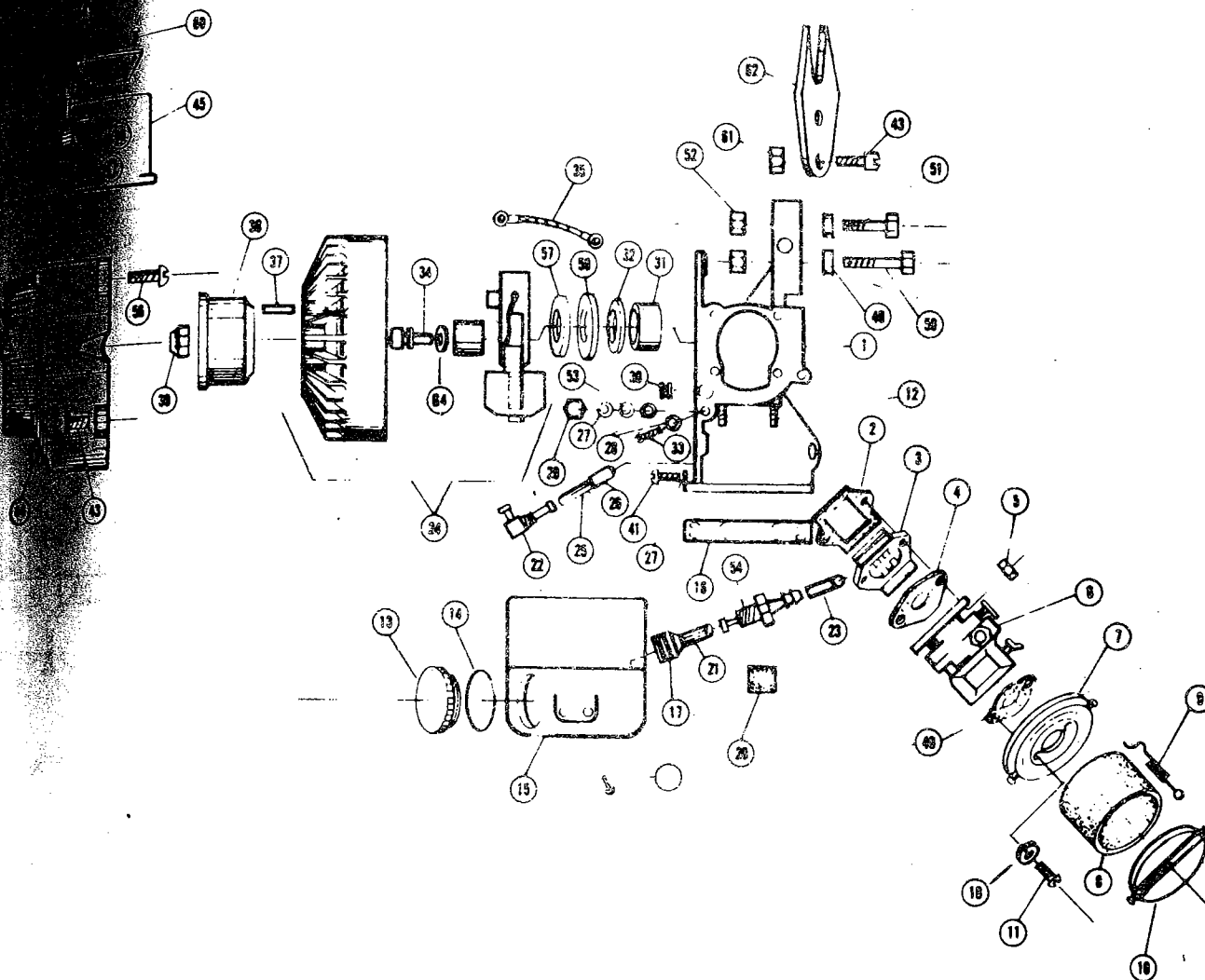


REF. NO.	PART NO.	NO. REQ'D.	DESCRIPTION	REF. NO.	PART NO.	NO. REQ'D.	DESCRIPTION
1	1356	1	Crankcase assembly.	33	1913	2	Seal, crankshaft.
2	2456	1	Plug—oil filler.	34	1609	1	Retaining Ring.
3	1949	1	C-Ring—oil filler plug seal.	35	1939	1	Gasket—bearing carrier.
4	2135	1	Oil Line.	36	1354	1	Bearing carrier.
6	3232	24	Needle Bearing.	37	1534	4	Flat Head Screw.
7	2381	1	Connecting Rod assembly.	38	3224	1	Bushing—clutch drum.
8	3231	1	Bearing—piston pin.		4832	1	Clutch Drum & Sprocket
9	1647	2	Screw—connecting rod.				7-tooth 404 pitch
10	2313	1	Piston assembly.		4823	1	Clutch Drum & Sprocket
11	1509	2	Retaining Ring—piston pin.				7-tooth 7/16 pitch
12	2548	2	Piston Ring.	39	4825	1	Clutch Drum & Sprocket
13	1975	2	Cylinder Gasket.				8-tooth 3/8 pitch
14	1352	1	Cylinder assembly.	40	1025	1	Clutch assembly.
15	3011	1	Spark Plug.	41	2518	2	Clutch Shoe.
18	1576	1	Clutch cover.	42	1676	2	Clutch Spring.
19	2368	1	Spacer—cylinder.	43	2281	1	Drive Plate—clutch.
20	1955	1	Gasket—muffler.	45	1538	1	Nut—crankshaft.
21	1503	4	Flat Washer—cylinder mounting.	47	2201	1	Handlebar.
22	1610	4	Screw—cylinder mounting.	48	1620	1	Nut—guide adjust.
23	1682	2	Sem screw muffler mounting.	49	1603	1	Screw—guide adjust.
24	1294	1	Muffler.	50	1210	1	Handle.
25	1512	2	Nut—handlebar mounting.	51	1551	2	Set Screw—oil
26	1530	2	Screw—handlebar mounting.	52	2273	1	Throttle Lever.
27	2472	1	Oil Pump—assembly.	53	2449	1	Throttle Wire.
	REPAIR KIT AVAILABLE ORDER PART NO. 2473.			54	1506	4	Screw—handlebar.
28	2366	1	Crankshaft.	55	1123	1	Throttle Trigger.
29	3208	1	Bearing—main.	56	2479	1	Elbow—oil dis.
30	1563	2	Screw—main bearing lock.	57	2111	1	Line—to oil pump.
31	1642	2	Lock Washer—bearing lock screw.	58	1022	1	Clamp and Chain
32	1562	1	Retaining Ring.	59	23104	1	Plate—model

POULAN CHAIN SAWS—MODEL SUPER 33

4 71

FIGURE 1



REF NO	PART NO	NO REQ'D	DESCRIPTION	REF NO	PART NO	NO REQ'D	DESCRIPTION
1	1356	1	Crankcase assembly.	30	2498	2	Grommet—spark plug wire.
2	1994	1	Gasket—reed valve to crankcase.	31	3227	1	Bearing—crankshaft.
3	2308	1	Reed Valve.	32	1936	1	Seal.
5	1513	2	Gasket—carburetor to reed valve.	33	15037	1	Screw—killer button term.
6	3404	1	Nut—carburetor mounting.	34	1517	2	Sem screw—stator plate mounting.
7	1209	1	Carburetor—complete assembly.	35	3954	1	Wire—magneto to killer button.
8	2426	1	Air Horn.	36	1514	4	Screw—cylinder shield mounting.
9	1569	2	Air Filter.	37	2243	1	Key—magneto rotor.
10	1146	1	Spring—air filter clamp.	38	2501	1	Starter cup.
11	1712	2	Cover—air filter.	39	1538	1	Nut—crankshaft.
12	1511	2	Screw—air horn mounting.	40	1940	1	Gasket—air horn to carburetor.
13	2432	1	Stud—carburetor mounting (in crankcase assembly).	41	1608	7	Hex Head Screw—gas tank mounting.
14	1915	1	Gas Cap.	43	1505	6	Screw—fan housing and spur mounting.
15	1199	1	O-Ring—gas cap seal.	44	1291	1	Fan Housing.
16	2367	1	Gas Tank.	45	1292	1	Cylinder shield.
18	1707	1	Separator (install with Pliobond cement).	46	1599	1	Roll Pin—in killer button.
20	2412	2	Weight—gas pick up.	47	1606	1	Spring—killer button.
21	2127	1	Lock Washer—air horn mounting.	48	2274	1	Killer Button.
22	2475	1	Felt. included in reference No. 17, 2411 Weight.	49	1626	2	Flat Washer—guide mounting.
23	2106	1	Line—gas pick up, 6"—cut from 8108.	50	1657	1	Bolt—guide mounting (long).
25	1905	1	Elbow—in oil tank.	51	1658	1	Bolt—guide mounting (short).
26	2129	1	Gas Line—to carburetor, 4 1/2"—cut from 8109	52	1659	2	Square Nut—guide mounting bolts.
27	2461	1	Magneto assembly (see separate page for magneto parts)	53	1520	1	Flat Washer—killer button terminal.
28	1502	7	Line—oil pick up, 5"—cut from 8108.	54	2482	1	Fitting—gas line.
29	1589	2	Weight—oil pick up	55	4208	1	Rewind Starter.
	1543	1	Lock Washer	56	1641	4	Screw—Starter mounting.
			Insulating Washer.	57	1680	1	Ring—locating.
			Nut.	58	1681	1	Slinger—Oil (plastic).
				59	23106	1	Plate—instruction.
				60	1507	4	Drive screw—Inst. plate—tank vent.
				61	1615	2	Nut—spur mounting.
				62	2286	1	Spur. opt.
				63	2621	1	Vent Plug.
				64	1503	2	Flat Washer 1/4"