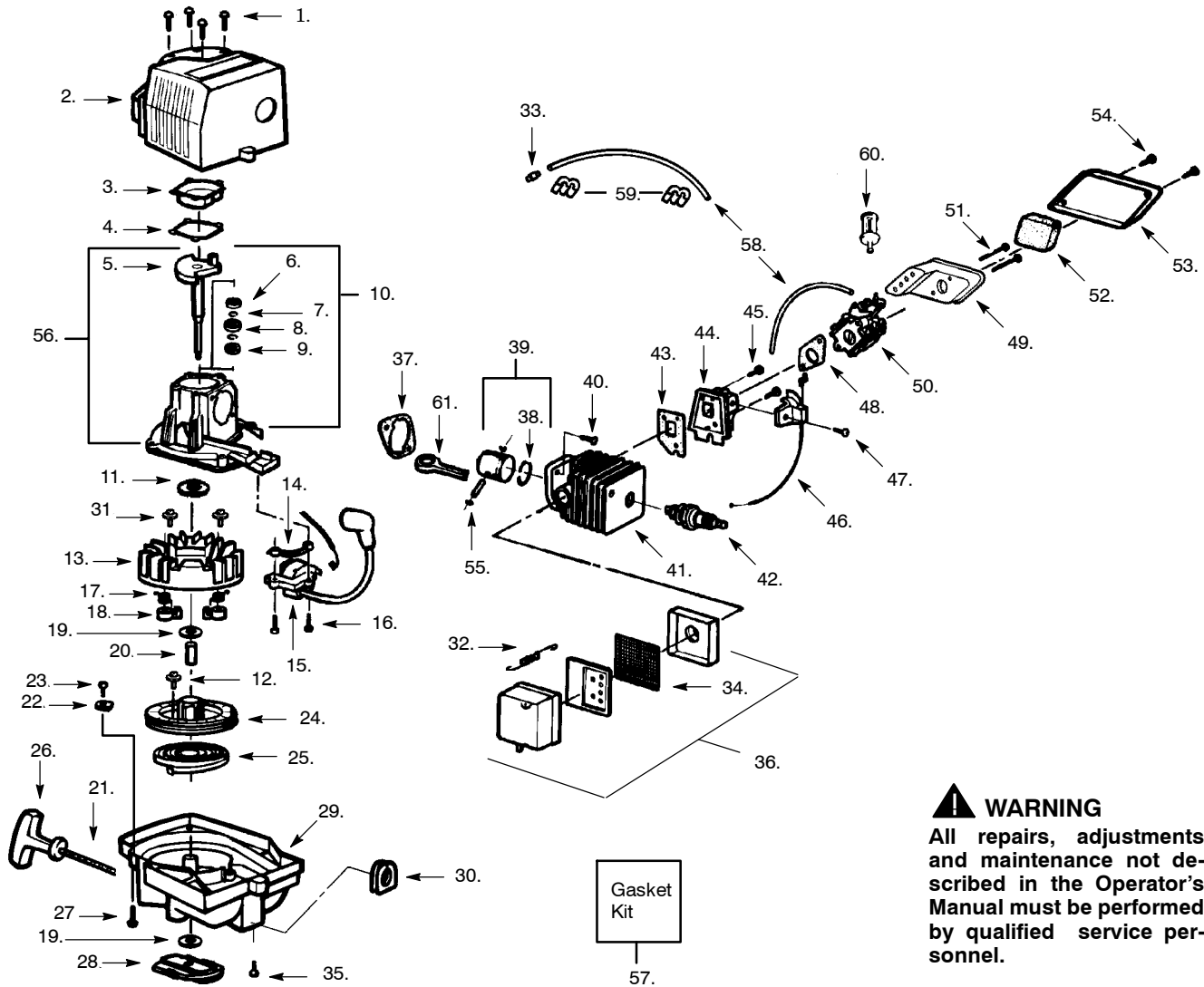


PARTS LIST NO. 530-082553		WEED EATER® PARTS LIST	MODEL(s) GHT17 & GHT22 (N. Am. & Australia)
DATE 10/25/95	REPLACES 530-068262-5/25/9 5		Note: Illustration may differ from actual model due to design changes



⚠ WARNING
All repairs, adjustments and maintenance not described in the Operator's Manual must be performed by qualified service personnel.

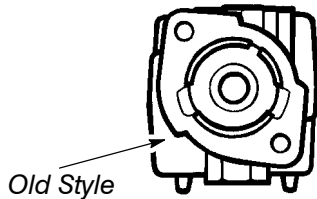
Ref.	Part No.	Description	Ref.	Part No.	Description	Ref.	Part No.	Description
1.	530-015810	Screw-Shroud	28.	530-014396	Clutch Ass'y. Kit	50.	-	Carburetor
2.	530-036345	Shroud	29.	530-014361	Fan Housing		530-035306	Type 1 WT 221
3.	530-029929	Crankcase Cover	30.	530-019182	Grommet		530-069682	Type 2 WT 379 w/ Limiter Caps
4.	530-019181	Gasket-Shrd./C'case	31.	530-015882	Screw-Flywheel	51.	530-015849	Screw-Air Box
5.	530-014307	Crankshaft Ass'y.	32.	530-029930	Muffler Spring	52.	530-029934	Air Filter Foam
6.	530-032125	Inner Bearing	33.	530-023877	Fuel Line Fitting	53.	530-036193	Air Filter Cover
7.	530-015945	Retainer-C'case	34.	530-036180	Muffler Screen	54.	530-015635	Screw-A.F. Cover
8.	530-019179	Crankcase Seal	35.	530-015934	Screw-Fan Hsg/Shrd.	55.	530-015162	Piston Pin Retainer
9.	530-032124	Outer Bearing	36.	530-069352	Muffler Kit	56.	★	C'case & C'shaft Assy. (Incl. 5 & 10) - See Ser. Ref. 1
10.	★	Crankcase Ass'y. (Incl. 6-9) See Ser. Ref. 1	37.	530-019223	Cylinder Gasket	57.	★	Gasket Kit - See Ser. Ref. 1
11.	530-015941	Retaining Ring	38.	530-029924	Piston Ring			(Incl. 4, 37, 43 & 48)
12.	530-016080	Screw-Pulley	39.	-	Piston Kit (Incl. 38 & 55)	58.	530-069599	Fuel Line Kit (Incl. Fuel and Vent lines)
13.	530-039149	Flywheel Ass'y.		530-069350	Type 1	59.	530-016103	Retainer Clip
14.	530-036145	Spacer-Ignit. Mod.		530-069613	Type 2	60.	530-014362	Fuel Pick-Up Ass'y.
15.	530-039163	Ignition Module	40.	530-015953	Screw-Cylinder	61.	530-069615	Connecting Rod Kit
16.	530-015954	Screw-Ignit. Mod.	41.	★	Cylinder- See Ser. Ref. 1			Not Shown
17. ✓	530-047570	Spring-Starter Dog	42.	-	Spark Plug			Operator Manual
18.	530-029939	Starter Dog		952-030078	Type 1 (CJ-8Y)			Type 1
19.	530-015828	Washer		530-030075	Type 2 (RCJ-8Y)			Type 2
20.	530-015930	Flywheel Spacer	43.	530-019185	Gasket-Cylin./Carb.			English
21.	530-069232	Rope Kit	44.	530-036191	Carb. Adaptor			French/English
22.	530-015963	Retainer	45.	530-016014	Screw-Carb. Adap.			
23.	530-015496	Screw-Retainer	46.	530-014384	Throttle Cable Ass'y.			
24.	530-069353	Starter Pulley	47.	530-015775	Screw-Cable			
25.	530-029395	Starter Spring	48.	530-019194	Gasket-Carb. Adap			
26.	530-027569	Starter Handle	49.	530-036192	Air Box			
27.	530-015886	Screw-Fan Housing						

✓ = NEW PART NUMBER FOR THIS IPL ★ = REFER TO THE SERVICE REFERENCE INDICATED FOR MORE INFORMATION. (LOCATED AT END OF IPL)
● = THESE PARTS ARE ILLUSTRATED FOR CLARITY. ORDER COMPLETE ASSEMBLY.

PARTS LIST NO. 530-082553		WEED EATER® PARTS LIST	MODEL(s) GHT17 & GHT22 (N. Am. & Australia)
DATE 10/25/95	REPLACES 530-068262-5/25/9 5		Note: Illustration may differ from actual model due to design changes

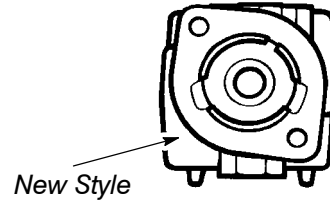
★SERVICE REFERENCE

1. Crankcase/Cylinder Assemblies -- When replacing the Cylinder, Crankcase, or Gasket refer below and order accordingly.



Old Style

- Key No. 10 #530-069406 Crankcase/Cylinder Kit & Key No. 41
- Key No. 56 #530-014395 - C'case & C'shaft Ass'y.
- Key No. 57 #530-069351 - Gasket Kit



New Style

- Key No. 10 #530-014861 - Crankcase Ass'y.
- Key No. 41 - Cylinder #530-069405 Type 1 #530-069614 Type 2
- Key No. 56 #530-014973 - C'case & C'shaft Ass'y.
- Key No. 57 - Gasket Kit #530-069407 Type 1 #530-069622 Type 2
- #530-069617 - Crankcase/Cylinder Kit (Incl Ref. 10 & 41) Type 2