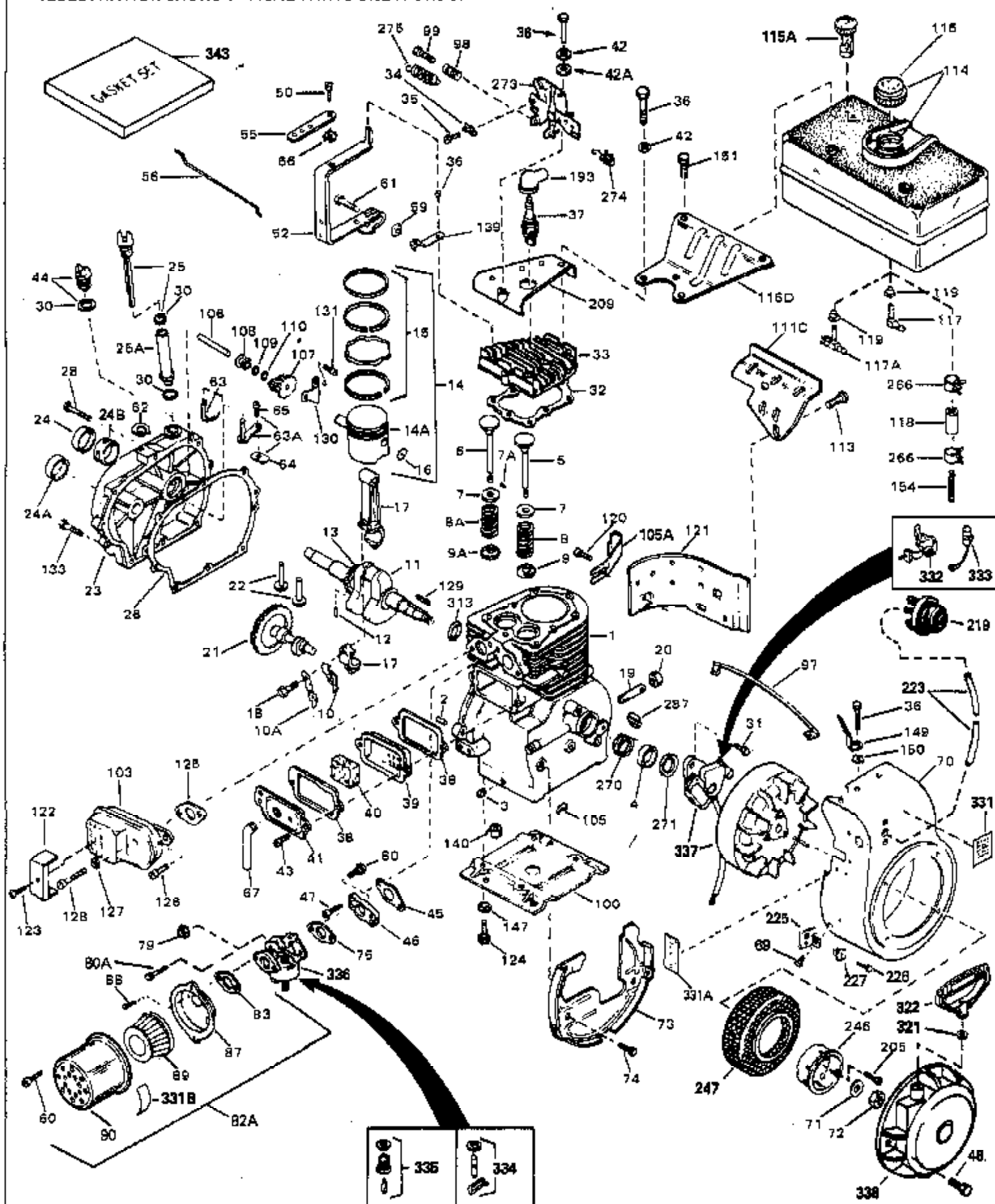


ILLUSTRATION SHOWS TYPICAL PARTS ONLY. ORDER BY PART NUMBER. PARTS NOT LISTED ARE SUPPLIED BY OEM.



| Ref # | Part Number | Qty | Description  |
|-------|-------------|-----|--|
| 1     | 32586C      |     | Cylinder (Incl. 2, 3, 4 & 76) (2-3/4" Bore)  |
| 2     | 27652       |     | Pin, Dowel   |
| 3     | 27642       |     | Plug, Oil drain  |
| 4     | 32630       |     | Seal, Oil  |
| 5     | 32783       |     | Intake Valve (Std.) (Incl. 9)  |
| 5     | 32784       |     | Intake Valve (1/32" OS) (Incl. 9)  |
| 6     | 27878A      |     | Exhaust Valve (Std.) (Incl. 9)   |
| 6     | 27880A      |     | Exhaust Valve (1/32" OS) (Incl. 9)   |
| 7     | 27882       |     | Cap, Upper valve spring  |
| 7A    | 20810       |     | Pin, Valve spring retainer (Use as required)   |
| 8A    | 27881       |     | Spring, Valve  |
| 8     | 27881       |     | Spring, Valve  |
| 9A    | 32581       |     | Cap, Lower valve spring  |
| 9     | 32581       |     | Cap, Lower valve spring  |
| 10A   | 32590       |     | Plate, Lock & Oil dipper (This plate may be replaced by 34242 oil dipper but 650662C screw must be used.)    |
| 10    | 34242       |     | Dipper, Oil  |
| 11    | 32782       |     | Crankshaft (Incl. 12 & 13)   |
| 12    | 29783       |     | Crankshaft Gear Pin (Early production )  |
| 13    | 27884       |     | Gear, Crankshaft (Used in early production) This gear is servicable onlywhen it is pinned to the crankshaft. |
| 14A   | 32592B      |     | Piston & Pin Ass'y. (Std.)(2-3/4")(In cl.16)   |
| 14A   | 32593B      |     | Piston & Pin Ass'y. (.010" OS) (Incl. 16)  |
| 14A   | 32594B      |     | Piston & Pin Ass'y. (.020" OS) (Incl. 16)  |
| 14    | 34517       |     | Piston, Pin & Ring Set (Std.) (2-3/4" Bore)  |
| 14    | 34518       |     | Piston, Pin & Ring Set (.010" OS)  |
| 14    | 34519       |     | Piston, Pin & Ring Set (.020" OS)  |
| 15    | 32595       |     | Ring Set (Std.) (2-3/4" Bore)  |
| 15    | 32596       |     | Ring Set (.010" OS)  |
| 15    | 32597       |     | Ring Set (.020" OS)  |
| 16    | 27888       |     | Ring, Piston pin retaining   |
| 17    | 32591C      |     | Rod Assy., Connecting (Incl. 10 & 18)  |
| 18    | 650662C     |     | Screw, Connecting rod (2 each)   |
| 21    | 32115       |     | Camshaft (MCR)   |
| 22    | 34034       |     | Lifter, Valve  |
| 23    | 31451A      |     | Cylinder Cover (Incl.24, 106, 309, 310 & 311)  |
| 24B   | 31546       |     | Bushing, Crankshaft (Use as required)  |
| 24    | 28460       |     | Seal, Oil  |
| 25    | 31297       |     | Dipstick, Oil (Incl. 30)   |
| 26    | 30684       |     | * Gasket, Cylinder cover   |
| 28    | 650488      |     | Screw, 1/4-20 x 1-1/4"   |
| 30    | 29673       |     | * Gasket, Oil filler   |
| 31    | 650489      |     | Screw, 1/4-20 x 5/8"   |
| 32    | 32631A      |     | * Gasket, Cylinder head  |
| 33    | 30938A      |     | Head, Cylinder   |
| 34    | 27793       |     | Clip, Conduit (Use as required)  |
| 35    | 28942       |     | Screw, 10-32 x 3/8" (Use as required)  |
| 36    | 650697A     |     | Screw, 5/16-18 x 2-1/2" (Use as required)  |
| 36    | 650695A     |     | Screw, 5/16-18 x 2-1/4" (Use as required)  |
| 36    | 650694A     |     | Screw, 5/16-18 x 2" (Use as required)  |
| 37    | 33636       |     | Resistor Spark Plug (RJ-8C)  |
| 37    | 34251       |     | Resistor Spark Plug  |
| 38    | 27896A      |     | * Gasket, Breather cover   |
| 39    | 28423       |     | Body, Breather   |
| 40    | 28424       |     | Element, Breather  |
| 41    | 28425       |     | Cover, Valve spring  |
| 42    | 26073       |     | Washer (Use as required)   |

| Ref # | Part Number | Qty | Description  |
|-------|-------------|-----|--|
| 42    | 650691      |     | Washer, Flat (Use as required)   |
| 42A   | 650690      |     | Washer, Belleville (Use as required)   |
| 43    | 650128      |     | Screw, 10-24 x 1/2"  |
| 45    | 27915A      |     | * Gasket, Intake   |
| 46    | 30195A      |     | Flange, Carburetor (Incl. 79 & 80)   |
| 47    | 30196       |     | Screw, 5/16-18 x 3/4"  |
| 48    | 29716       |     | Screw, 1/4-28 x 7/16"  |
| 50    | 650548      |     | Screw, 8-32 x 5/16"  |
| 52    | 32326A      |     | Lever, Governor (New lever does not need 1 of 51,66,132,164,165,207)   |
| 55    | 30205       |     | Bracket, Adjusting   |
| 56    | 30206       |     | Link, Throttle   |
| 59    | 29216       |     | Nut, Lock, 10-32   |
| 60    | 650152      |     | Screw, 8-32 x 3/8"   |
| 61    | 29826       |     | Screw, 10-32 x 3/4"  |
| 62    | 29642       |     | Ring, Retaining  |
| 63    | 30699B      |     | Governor Rod Ass'y. (This one-piece governor rod is no longer used. It is replaced by 30699C ass'y., Ref. no. 63A) |
| 63A   | 30699C      |     | Rod Assy., Governor (Incl. 64 & 65)  |
| 64    | 30700       |     | Yoke, Governor   |
| 65    | 650494      |     | Screw, 6-40 x 5/16"  |
| 66    | 29918       |     | Lockwasher, #8 E.T.  |
| 69    | 29747B      |     | Screw, 5/16-24 x 21/32"  |
| 70    | 32158E      |     | Blower Housing (For elec.star.)(Incl. 134,135)   |
| 71    | 650815      |     | Washer, Belleville   |
| 72    | 8116        |     | Nut, Hex   |
| 73    | 29536       |     | Blower Housing Baffle (without electric starter knock-out) (Use as required)                                       |
| 73    | 35256A      |     | Blower Housing Baffle (with electric starter knock-out) (Use as required) (Point Ignition)                         |
| 74    | 650561      |     | Screw, 1/4-20 x 5/8"   |
| 75    | 31688A      |     | * Gasket, Carburetor   |
| 79    | 29752       |     | Nut & Lockwasher Assy., 1/4-28   |
| 80    | 650572      |     | Screw, 1/4-28 x 1-1/8"   |
| 82A   | 730164      |     | Air Cleaner Ass'y. (Incl. 60, 83, 87, 88, 89, 90A & 331B) (Use as required)  |
| 83    | 27272A      |     | * Gasket, Air cleaner  |
| 87    | 31708       |     | Bracket, Air cleaner NOTE: 130010 thru 10C & 11 used in early production only.                                     |
| 88    | 28820       |     | Screw, 10-32 x 1/2"  |
| 90    | 31715       |     | Body, Air cleaner  |
| 97    | 35349       |     | Ground Wire  |
| 98    | 32924       |     | Spring, Compression  |
| 99    | 650688      |     | Screw, 10-32 x 1"  |
| 100   | 29538       |     | Base, Engine mounting  |
| 106   | 31845       |     | Shaft, Mechanical governor   |
| 107   | 30591       |     | Gear Assy., Governor (Incl. 109)   |
| 108   | 30588A      |     | Spool, Governor  |
| 109   | 30590A      |     | Washer, Flat   |
| 110   | 29193       |     | Ring, Retaining  |
| 113   | 650561      |     | Screw, 1/4-20 x 5/8"   |
| 114   | 31301       |     | Fuel Tank (Incl. 115)  |
| 115   | 410144B     |     | Fuel Cap (White Plastic)(Std)(As required)   |

| Ref # | Part Number | Qty | Description   |
|-------|-------------|-----|---|
| 115   | 33032       |     | Fuel Cap (Charcoal Plastic) (Spurt resistant, Low profile)<br>(Use as required)   |
| 115   | 34210       |     | Fuel Cap (Red Plastic) (Spurt resistant, High profile) (Use as required)  |
| 115   | 35355       |     | Fuel Cap (Use as required)  |
| 117   | 28584       |     | Fitting, Fuel strainer & elbow  |
| 118   | 29774       |     | Fuel Line (Braided 8-1/4" 21 cm)(Use as req.)   |
| 118   | 30705       |     | Fuel Line (Braided 16") (41 cm) (Use as req.)   |
| 118   | 30962       |     | Fuel Line (Braided 32") (81 cm) (Use as req.)   |
| 120   | 650128      |     | Screw, 10-24 x 1/2" (Use as required)   |
| 121   | 30622A      |     | Extension, Blower housing   |
| 124   | 650542      |     | Screw, 5/16-18 x 3/4"   |
| 125   | 27930A      |     | Gasket, Exhaust   |
| 126   | 30196       |     | Screw, 5/16-18 x 3/4"   |
| 127   | 26073       |     | Washer (Use as required)  |
| 128   | 650694A     |     | Screw, 5/16-18 x 2" (Use as required)   |
| 128   | 30196       |     | Screw, 5/16-18 x 3/4"   |
| 129   | 32589       |     | Key, Flywheel   |
| 130   | 31843A      |     | Bracket, Governor gear  |
| 131   | 650836      |     | Screw, 10-24 x 1/2"   |
| 133   | 650493      |     | Screw, 1/4-20 x 1-3/4"  |
| 149   | 30747       |     | Clip, Shorting  |
| 150   | 650890      |     | Lockwasher  |
| 193   | 610118      |     | Cover, Spark plug (Use as required)   |
| 193   | 27276       |     | Cover, Spark plug   |
| 205   | 650561      |     | Screw, 1/4-20 x 5/8" (Use as required )   |
| 209   | 30939A      |     | Cover, Cylinder head  |
| 226   | 650760      |     | Screw, 8-32 x 3/8"  |
| 227   | 28545       |     | Grommet   |
| 246   | 32125       |     | Cup, Starter  |
| 247   | 590417      |     | Screen, Starter cup   |
| 266   | 26460       |     | Clamp, Fuel line  |
| 270   | 31461       |     | Bushing, Crankshaft (Use as required)   |
| 274   | 610973      |     | Terminal Ass'y. (As req. on late prod uction)   |
| 287   | 27275       |     | Clip, Hi-tension wire (Use as require d)  |
| 287   | 34246       |     | Clip, Ground wire (Use as required)   |
| 331A  | 34346       |     | Decal, Instruction  |
| 331   | 550223      |     | Decal, Name   |
| 332   | 30547A      |     | Contact Assy., Breaker  |
| 333   | 30548B      |     | Condenser   |
| 334   | 631021      |     | Inlet Needle, Seat & Clip Assy.   |
| 336   | 631453      |     | Carburetor (Incl. 75) (Refer to Division 5, Section A, page 100 for breakdown)  |
| 337   | 610689A     |     | Magneto NOTE: The complete magneto is not available as an assembly. The magneto number is shown for reference purposes only. Order component parts individually, as show in parts list. (Refer to Division 5, Section B, page 24 for breakdown) |
| 338   | 590420      |     | Rewind Starter (Refer to Division 5, Section C, page 25 for breakdown)  |
| 343   | 33239A      |     | Gasket Set (Incl. items marked*)  |

ILLUSTRATION SHOWS TYPICAL PARTS ONLY. ORDER BY PART NUMBER. PARTS NOT LISTED ARE SUPPLIED BY OEM.

214A 214 262A 256 263 331H 223 213 274 256A 255 264 282 263 284 283 257 231 324 219A 331E 323 331G 214 230 231 263 284 283 257 231 324 219A 331E 323 331G 214 230 231 263 284 283 257 231 324

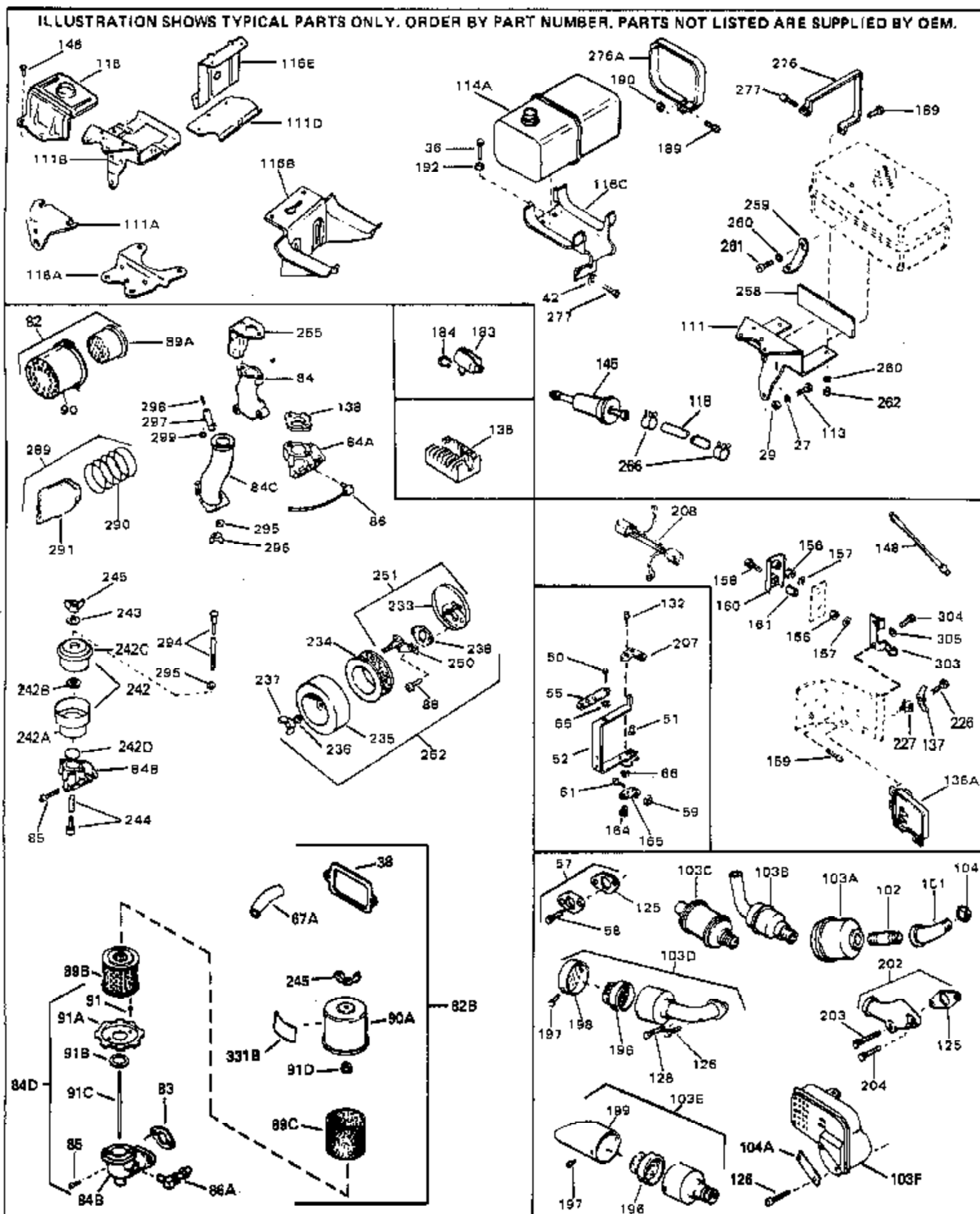
168 169 169 167 170 171 189 174 166 175 177 178 179 176 173 216 218 217 215 46A 308 312 311 310 309 186 186 142 144 143 187 182 76 141 293 331D 292 338 48 331C 268 289 249 247A 248 247B 247C 342 340 341 339 152 327A 193 328 327 279A 279B 279C 31 278 279 280 326 301 300 302 181 272 98 99 214 35 34 274 96 93 94 92A 95A 93 92B 92 96B 96C 96A 92 92C 201 163 135 134 316 315 317 71 72 318 319 320A 314 320

OPTIONAL 110-120 VOLT STARTER MOTOR KIT

SOLID STATE

| Ref # | Part Number | Qty | Description   |
|-------|-------------|-----|---|
| 31    | 650489      |     | Screw, 1/4-20 x 5/8"  |
| 34    | 27793       |     | Clip, Conduit (Use as required)   |
| 35    | 28942       |     | Screw, 10-32 x 3/8" (Use as required)   |
| 43A   | 650128      |     | Screw, 10-24 x 1/2"   |
| 48    | 29716       |     | Screw, 1/4-28 x 7/16"   |
| 56    | 30206       |     | Link, Throttle  |
| 67A   | 32447       |     | Tube, Breather  |
| 68    | 32446       |     | Grommet, Breather tube  |
| 71    | 650815      |     | Washer, Belleville  |
| 72    | 8116        |     | Nut, Hex  |
| 92A   | 650399      |     | Screw, 10-32 x 5/8" (Supplied by OEM)   |
| 92B   | 30712       |     | Lever, Bellcrank  |
| 92C   | 31879       |     | Link, Governor lever-to-bellcrank   |
| 92    | 30312       |     | Screw, 10-32 x 1/2"   |
| 93    | 29530       |     | Bushing, Bellcrank  |
| 93A   | 28562       |     | Bushing, RPM adjusting lever  |
| 94    | 30199A      |     | Bracket, Speed control (Incl. 98 & 99 )   |
| 94A   | 33450       |     | Nut, Lock   |
| 95A   | 32977       |     | Spring, Torsion   |
| 95    | 30202       |     | Spring, Extension   |
| 96B   | 33593       |     | Pin, Swivel   |
| 96C   | 33687       |     | Ring, Retaining   |
| 96A   | 33592       |     | Lever, Speed control  |
| 98    | 32924       |     | Spring, Compression   |
| 99    | 650688      |     | Screw, 10-32 x 1"   |
| 193   | 610118      |     | Cover, Spark plug (Use as required)   |
| 193   | 27276       |     | Cover, Spark plug   |
| 201   | 730152      |     | Control Bracket (Incl. 92, 92A, 92B,93, 93A,94, 95, 95A & 96)   |
| 263   | 650764      |     | Nut, "U" Type (Use as required)   |
| 274   | 610973      |     | Terminal Ass'y. (As req. on late prod uction)   |
| 308   | 31793       |     | Bearing, Ball   |
| 309   | 31855       |     | Retainer, Bearing   |
| 310   | 650778      |     | Washer, Lock  |
| 311   | 650580      |     | Nut, Lock   |
| 312   | 31792       |     | Washer, Thrust  |
| 331   | 550223      |     | Decal, Name   |
| 338   | 590420      |     | Rewind Starter (Refer to Division 5, Section C, page 25 for breakdown)  |
| 340   | 33328D      |     | Starter Motor Kit (110-120 Volt) This 110-120 volt starter motor kit may have been added to this engine. It can be added only if cylinder hasdrilled and tapped starter mounting bosses and a ring gear flywheel (see#342). Refer to service number stamped on end cap of motor, or on decal, for identifca |
| 342   | 30811A      |     | Flywheel (Ring gear flywheel requiredon engines using 110-120 volt starter kits listed above)   |
| 342   | 611042      |     | Flywheel (Used on Type letters H and above) (Std. Point ignition) (Ring gear flywheel required on engines using 110-120 volt starter kits listed above)   |
| 342   | 611085      |     | Flywheel (Minimum ring gear flywheel required on engines using 110-120 volt starter kits listed above) (Use withSolid State ignition)   |

ILLUSTRATION SHOWS TYPICAL PARTS ONLY. ORDER BY PART NUMBER. PARTS NOT LISTED ARE SUPPLIED BY OEM.



| Ref # | Part Number | Qty | Description  |
|-------|-------------|-----|--|
| 27    | 27513       |     | Lockwasher, 1/4" (Use as required)   |
| 36    | 650697A     |     | Screw, 5/16-18 x 2-1/2" (Use as required)  |
| 36    | 650695A     |     | Screw, 5/16-18 x 2-1/4" (Use as required)  |
| 36    | 650694A     |     | Screw, 5/16-18 x 2" (Use as required)  |
| 38    | 27896A      |     | * Gasket, Breather cover   |
| 42    | 26073       |     | Washer (Use as required)   |
| 42    | 650691      |     | Washer, Flat (Use as required)   |
| 50    | 650548      |     | Screw, 8-32 x 5/16"  |
| 51    | 30319       |     | Rivet, Split (Used in early production)  |
| 52    | 32326A      |     | Lever, Governor (New lever does not need 1 of 51,66,132,164,165,207)   |
| 55    | 30205       |     | Bracket, Adjusting   |
| 57    | 730130      |     | Exh.Adap.Kit (Incl. 58 & 125) (Use as req.)  |
| 58    | 30196       |     | Screw, 5/16-18 x 3/4" (Use as required)  |
| 59    | 29216       |     | Nut, Lock, 10-32   |
| 61    | 29826       |     | Screw, 10-32 x 3/4"  |
| 66    | 29918       |     | Lockwasher, #8 E.T.  |
| 67A   | 32447       |     | Tube, Breather   |
| 82B   | 730561      |     | Air cleaner kit (Incl. 38, 67A, 83, 84B, 85,89B, 89C, 90A, 91, 91A, 91B, 91C, 91D, 245 & 331B) (Use only on engines with an externally vented fully adjustable carburetor) |
| 82    | 730127      |     | Air Cleaner Ass'y. (Incl. 60, 83, 87, 88, 89A, 90, 238 & 331B) (Use as required)   |
| 83    | 27272A      |     | * Gasket, Air cleaner  |
| 84D   | 34819       |     | Air Cleaner Elbow (Incl. 84B, 86A, 91, 91A, 91B & 91C) (Use in 730561 assembly only)   |
| 88    | 28820       |     | Screw, 10-32 x 1/2"  |
| 89A   | 31700       |     | Element, Air cleaner   |
| 90    | 31715       |     | Body, Air cleaner  |
| 103D  | 33456       |     | Muffler (Incl. 125, 126, 196, 197 & 198)   |
| 103E  | 391026      |     | Opt. Spark Arrest Muffler (Incl.196,197,199)   |
| 111   | 31694       |     | Bracket, Fuel tank   |
| 113   | 650561      |     | Screw, 1/4-20 x 5/8"   |
| 118   | 29774       |     | Fuel Line (Braided 8-1/4" 21 cm)(Use as req.)  |
| 118   | 30705       |     | Fuel Line (Braided 16") (41 cm) (Use as req.)  |
| 118   | 30962       |     | Fuel Line (Braided 32") (81 cm) (Use as req.)  |
| 125   | 27930A      |     | Gasket, Exhaust  |
| 126   | 30196       |     | Screw, 5/16-18 x 3/4"  |
| 128   | 650694A     |     | Screw, 5/16-18 x 2" (Use as required)  |
| 128   | 30196       |     | Screw, 5/16-18 x 3/4"  |
| 132   | 650548      |     | Screw, 8-32 x 5/16" (Early production )  |
| 137   | 33356       |     | Terminal   |
| 148   | 34067       |     | Wire Assy., Alternator adapter (4-1/4 ")   |
| 148   | 34069       |     | Wire Assy., Alternator adapter (6-3/4 ")   |
| 189   | 6201        |     | Screw, 1/4-28 x 7/8"   |
| 196   | 33323       |     | Screen, Muffler  |
| 197   | 650578      |     | Screw, 8-18 x 3/8"   |
| 198   | 33172       |     | Cover, Muffler   |
| 202   | 31288       |     | Exh. Adaptor Kit (Incl.125,203,204) ( As req.)   |
| 203   | 650697A     |     | Screw, 5/16-18 x 2-1/2" (Use as required)  |
| 204   | 6021A       |     | Screw, 5/16-18 x 1-1/2" (Use as required)  |
| 226   | 650760      |     | Screw, 8-32 x 3/8"   |
| 227   | 28545       |     | Grommet  |
| 262   | 29752       |     | Nut, Lock  |
| 266   | 26460       |     | Clamp, Fuel line   |
| 276   | 31697       |     | Strap, Fuel tank   |

| Ref # | Part Number | Qty | Description                        |
|-------|-------------|-----|------------------------------------|
| 277   | 29212       |     | Screw, Hex hd. Sems, 1/4-28 x 7/16 |