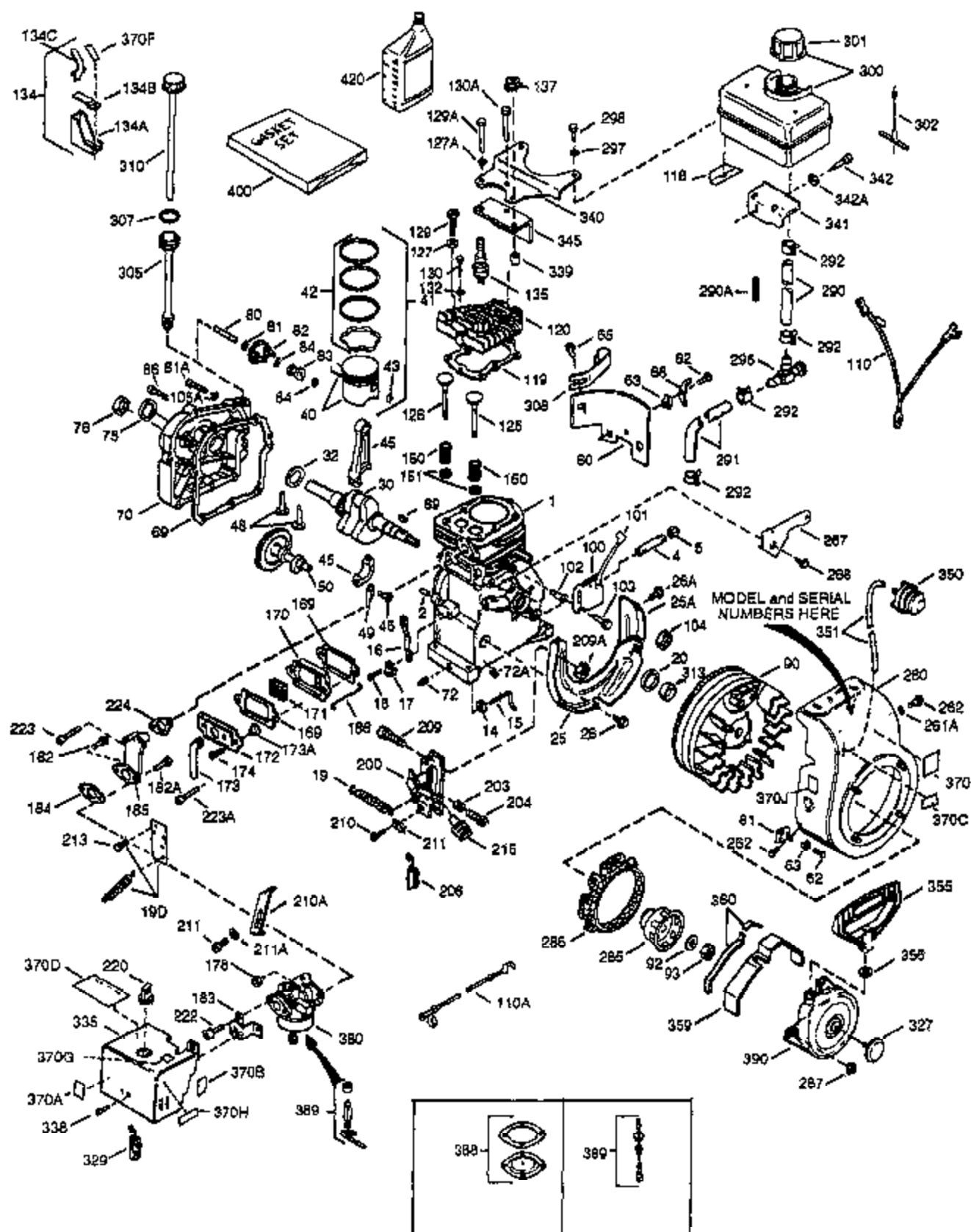


ILLUSTRATION SHOWS TYPICAL PARTS ONLY. ORDER BY PART NUMBER. PARTS NOT LISTED ARE SUPPLIED BY OEM

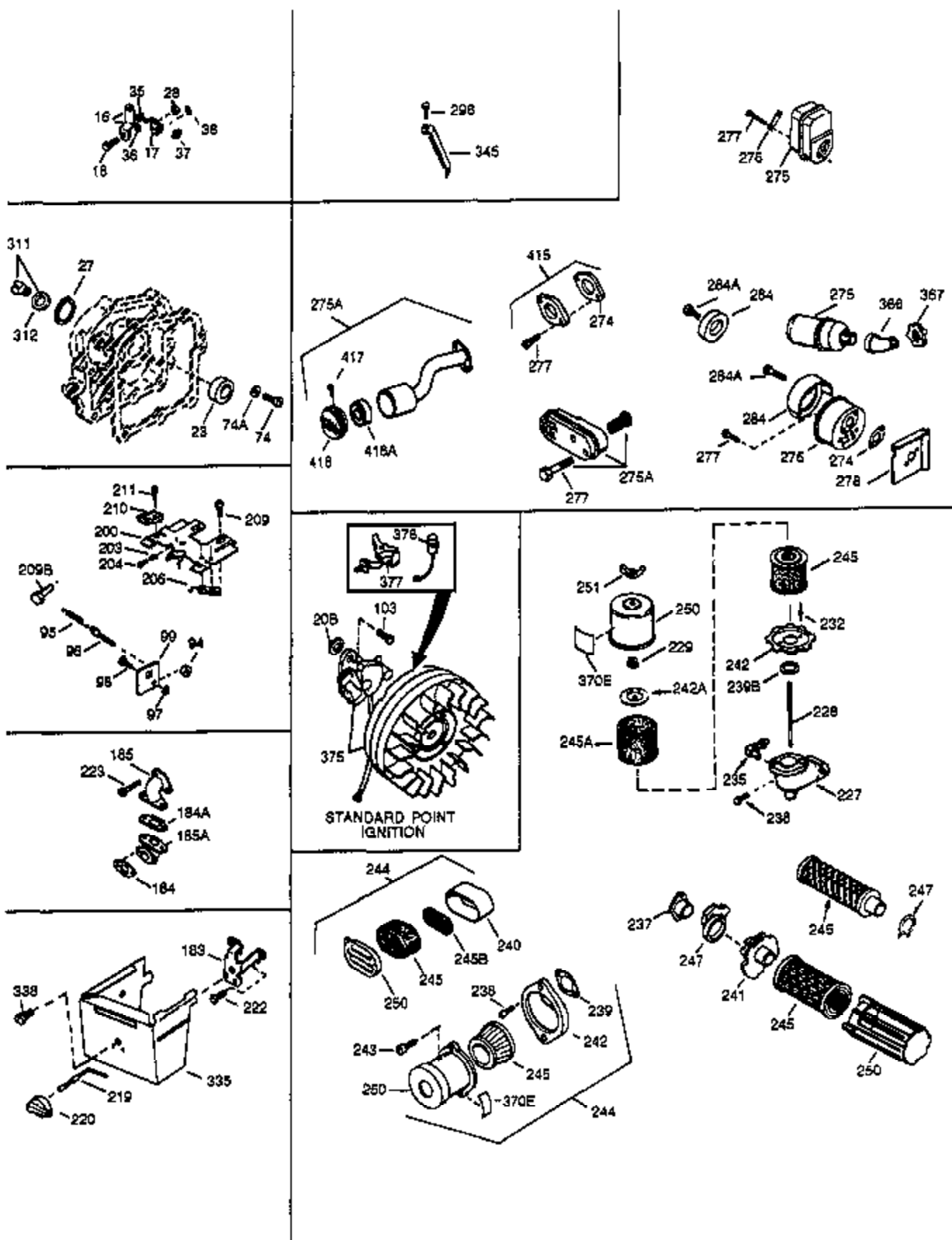


| Ref # | Part Number | Qty | Description |
|-------|-------------|-----|---|
| | 1 35094A | | Cylinder (Cl liner)(Incl.1A,2,3 & 6)(2-1/2") |
| 1A | 34836 | | Bushing, Cylinder |
| 2 | 26727 | | Pin, Dowel |
| 3 | 27642 | | Pipe plug, 1/4-18 |
| 6 | 32600 | | Seal, Oil |
| 7 | 29314B | | Intake Valve (Std.) (Incl. 11) |
| 7 | 29315C | | Intake Valve (1/32" OS) (Incl. 11) |
| 8 | 29313C | | Exhaust Valve (Std.) (Incl. 11) |
| 8 | 34776 | | Exhaust Valve (Std.) (Incl. 11) |
| 8 | 34777 | | Exhaust Valve (1/32" OS) (Incl. 11) |
| 9 | 31671 | | Valve Spring Cap (Used in early produ ction) |
| 10 | 31672 | | Spring, Valve |
| 11 | 31673 | | Valve Spring Cap |
| 12 | 35121 | | Crankshaft (Incl. 23) |
| 14A | 32538B | | Piston & Pin Ass'y.(Std.)(2-1/2")(Inc l.16) |
| 14A | 32548B | | Piston & Pin Ass'y. (.010" OS) (Incl. 16) |
| 14A | 32549B | | Piston & Pin Ass'y. (.020" OS) (Incl. 16) |
| 14 | 34514 | | Piston, Pin & Ring Set (Std.) (2-1/2" Bore) |
| 14 | 34515 | | Piston, Pin & Ring Set (.010" OS) |
| 14 | 34516 | | Piston, Pin & Ring Set (.020" OS) |
| 15 | 28986 | | Ring Set (Std.) (2-1/2" Bore) |
| 15 | 28987 | | Ring Set (.010" OS) |
| 15 | 28988 | | Ring Set (.020" OS) |
| 16 | 20381 | | Ring, Piston retaining |
| 17 | 32875 | | Rod Assy., Connecting (Incl. 18 & 19) |
| 18 | 32654 | | Dipper, Oil |
| 19 | 32610A | | Bolt, Connecting rod |
| 20 | 32197A | | Camshaft (MCR) |
| 21 | 27241 | | Lifter, Valve |
| 22 | 30756B | | Cover, Cylinder (Incl. 23, 26, 28 & 3 4) (BB) |
| 24 | 27677A | | * Gasket, Cylinder cover |
| 25 | 650488 | | Screw, 1/4-20 x 1-1/4" |
| 26 | 27625 | | Plug, Oil fill (Incl. 28) |
| 34 | 30574 | | Shaft, Mechanical governor |
| 39 | 29953C | | * Gasket, Cylinder head |
| 40 | 30579A | | Head, Cylinder (Incl. 41A) |
| 41 | 650695A | | Screw, 5/16-18 x 2-1/4" (Use as requ ired) |
| 41 | 6021A | | Screw, 5/16-18 x 1-1/2" (Use as requi red) |
| 41 | 650865 | | Screw, 5/16-18 x 2" (Use as required) |
| 41A | 650694A | | Screw, 5/16-18 x 2" (Use as required) |
| 42 | 33636 | | Resistor Spark Plug (J-8C) |
| 43 | 33344 | | Baffle, Heat |
| 44 | 27234A | | * Gasket, Valve spring cover (Two requi red) |
| 45 | 27666 | | Breather Body & valve assy. |
| 46 | 31410 | | Element, Breather |
| 47 | 34146 | | Cover, Valve spring |
| 48 | 32446 | | Grommet, Breather tube |
| 49 | 32447 | | Tube, Breather |
| 50 | 650128 | | Screw, 10-24 x 1/2" |
| 51 | 26754A | | * Gasket, Intake to cylinder |
| 52 | 28416A | | Pipe, Intake (Incl. 54) |
| 53 | 650664 | | Screw, 1/4-20 x 1-19/32" |
| 54 | 650840 | | Screw, 1/4-20 x 1-7/32" |
| 55 | 6201 | | Screw, 1/4-28 x 7/8" |
| 56 | 26756 | | * Gasket, Carburetor to intake |
| 56A | 27272A | | * Gasket, Carburetor to air cleaner |
| 57 | 29752 | | Nut & Lockwasher Assy., 1/4-28 |

| Ref # | Part Number | Qty | Description |
|-------|-------------|-----|---|
| 58A | 730127 | | Air Cleaner Ass'y. (Incl.56A, 58, 59, 60, 66, 67 & 170) (Use as required) |
| 58A | 730164 | | Air Cleaner Ass'y. (Incl. 56A, 58, 59, 60, 66, 67 & 170A) (Use as required) |
| 58B | 31545 | | Air Cleaner Ass'y. (Incl. 56A, 59A, 60A, 61 & 62) (Use as required) |
| 69 | 30081A | | * Gasket, Muffler |
| 69A | 730162 | | Kit, Exhaust adapter (Incl. 69 & 77B) (Use as required) (Not for use on PTO side exhaust) |
| 70A | 30996 | | Muffler |
| 77B | 650493 | | Screw, 1/4-20 x 1-3/4" |
| 79 | 31858 | | Link, Throttle |
| 80 | 31510 | | Lever, Governor |
| 81 | 31335 | | Clamp, Governor lever |
| 82 | 650548 | | Screw, 8-32 x 5/16" |
| 87 | 33858A | | Control Bracket (Incl.88,89,100,101 & 157) NOTE: In original production the speed control assembly is riveted to the blower housing baffle (Ref. #107). Replacement speed control assembly includes screws (Ref. #101)and nuts (Ref. #100) for mounting. |
| 88 | 31342 | | Spring, Compression |
| 89 | 650549 | | Screw, 5-40 x 7/16" |
| 92 | 31426 | | Spring, Extension |
| 100 | 30322 | | Locknut, 8-32 (Use as required) |
| 101 | 650139 | | Screw, 8-32 x 1/2" (Use as required) |
| 101 | 650152 | | Screw, 8-32 x 3/8" (Use as required) |
| 101 | 30200 | | Screw, 10-24 x 9/16" (Use as required) |
| 105 | 28277 | | Washer, Flat |
| 106 | 31334 | | Rod, Governor |
| 107 | 33342 | | Baffle, Blower housing |
| 108 | 650561 | | Screw, 1/4-20 x 5/8" |
| 108A | 650701 | | Screw, 8-18 x 7/16" |
| 109 | 33341 | | Baffle, Extension |
| 111 | 34080 | | Spacer, Flywheel key |
| 112 | 34443A | | Solid State Ass'y. |
| 113 | 650872 | | Stud, Solid State mounting |
| 114 | 650814 | | Screw, Torx T-15, 10-24 x 1" |
| 115 | 610961 | | Flywheel key |
| 116 | 610118 | | Cover, Spark plug (Use as required) |
| 117 | 35182 | | Ground Wire Ass'y. |
| 118 | 611080 | | Flywheel |
| 119 | 33663C | | Housing, Blower NOTE: In original production, the starter may be riveted to theblower housing. If the starter or blower housing needs replacement, the other may need holes used for pop rivetingenlarged to use standard mounting hardware. Order 4 nuts (#29752) required to mount starter to replaceme |
| 122 | 29212 | | Screw, 1/4-28 x 7/16" |
| 123 | 650168 | | Washer |
| 124 | 650890 | | Lockwasher, 5/16 |
| 125 | 30747 | | Clip, Spark plug shorting |
| 130 | 35185 | | Screen, Starter |
| 131 | 34694 | | Cup, Starter |
| 132 | 650815 | | Washer, Belleville |
| 136B | 29752 | | Nut & Lockwasher Assy., 1/4-28 |
| 137 | 650128 | | Screw, 10-24 x 1/2" |

| Ref # | Part Number | Qty | Description |
|-------|-------------|-----|--|
| 138 | 29745 | | Extension, Blower housing |
| 139 | 34212 | | Bracket, Hold down |
| 140 | 30200 | | Screw, 10-24 x 9/16" |
| 141 | 34156A | | Fuel Tank (Incl. 142 & 156) NOTE: These tanks were built with different size fuel inlet openings. Tanks with the 1-3/16" I.D. opening use fuel cap 33032 or 34210. Tanks with the 1-1/2" I.D. opening use fuel cap 35355. |
| 142 | 33032 | | Cap, Fuel filler (Use as required) |
| 142 | 410144B | | Cap, Fuel filler (Std.) (Use as required) |
| 143 | 34183A | | Plate, Fuel tank mounting |
| 144 | 34182 | | Fuel Tank Bracket |
| 145 | 650561 | | Screw, 1/4-20 x 5/8" |
| 146 | 650665 | | Screw, 1/4-15 x 7/8" |
| 147 | 28212 | | Spacer, Tank bracket (Not used in all models) |
| 150 | 650691 | | Washer, Flat |
| 155 | 29774 | | Fuel Line (Braided, 8-1/4") (Use as required) |
| 155 | 30705 | | Fuel Line (Braided, 16") (Use as required) |
| 156 | 26460 | | Clamp, Fuel line (Use as required) |
| 157 | 610973 | | Terminal Ass'y. (Use as required) |
| 161 | 34594 | | Rod, Choke |
| 163A | 32203 | | Air Cleaner, Starter (Optional) |
| 163 | 730571 | | Str.Muff Kit(Incl.163A,163B,163C)(Opt .) |
| 163C | 34870 | | Decal, Instruction (Optional) |
| 163B | 32204 | | Bracket, Starter air cleaner (Optional) |
| 167 | 34783 | | Filter, Pre-air |
| 168 | 34782 | | Element Assy., Air cleaner (Incl. 176) |
| 169 | | | Pop Rivet (1/8" dia.) (Purchase locally) |
| 170 | 34699 | | Bracket, Air cleaner |
| 171 | 34698A | | Gasket, Air cleaner elbow |
| 172 | 30675 | | Fitting, Breather |
| 173 | 35071 | | Elbow Assy., Air cleaner (Incl.170,171,175) |
| 173 | 31431 | | Elbow, Air cleaner |
| 174 | 650163 | | Screw, 10-32 x 7/8" |
| 175 | 650826 | | Stud, 1/4-20 |
| 176 | 650825 | | Nut & Lockwasher, 1/4-20 |
| 177 | 34701 | | Bracket, Air cleaner |
| 178 | 34781 | | Cover, Air cleaner |
| 190F | 35344 | | Decal, Instruction |
| 190A | 34704 | | Decal, Air cleaner |
| 190C | 34346 | | Decal, Instruction |
| 194A | 631021 | | Inlet Needle Seat & Clip Assy. |
| 195A | 632229 | | Carburetor (Incl. 56) (Refer to Division 5, Section A, page 182 for breakdown) |
| 197 | 590420 | | Starter, Rewind In original production, the starter may be riveted to the blowerhousing. If the starter or blower housing needs replacement, the other may need holes used for pop riveting enlarged to use standard mounting hardware. Order 4 nuts (29752) required to mount starter to replacement blower |
| 198A | 33290D | | Electric Starter Motor (120 volt) This 120-Volt starter motor kit can be used on those models equipped with electric starter provisions. Refer to Division 5, Section D, Page 16 for breakdown. |
| 200 | 33233A | | * Gasket Set (Incl. items marked *) |

ILLUSTRATION SHOWS TYPICAL PARTS ONLY. ORDER BY PART NUMBER. PARTS NOT LISTED ARE SUPPLIED BY OEM.

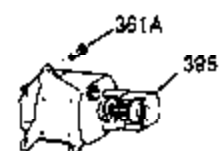
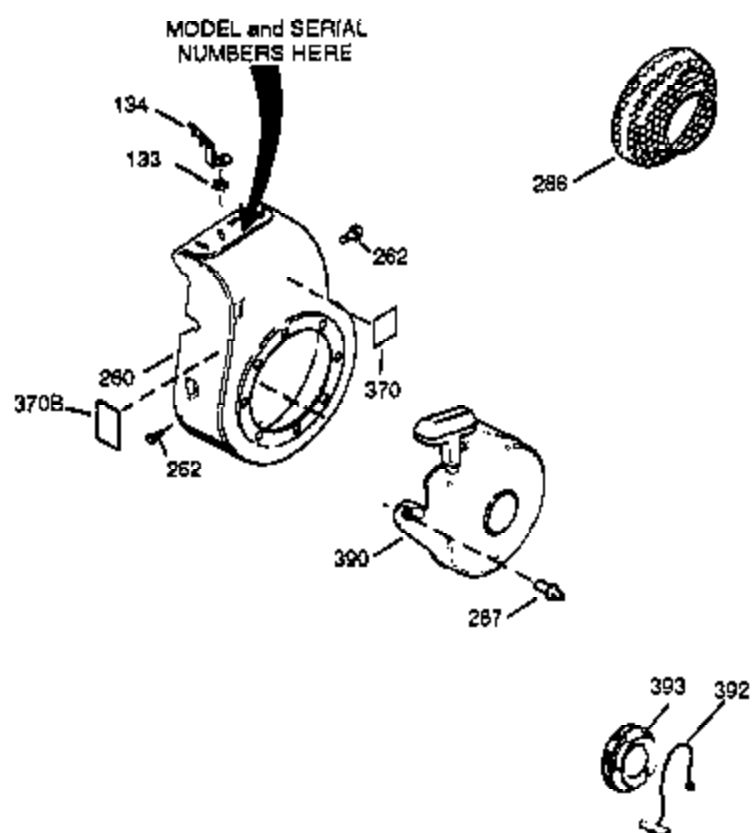
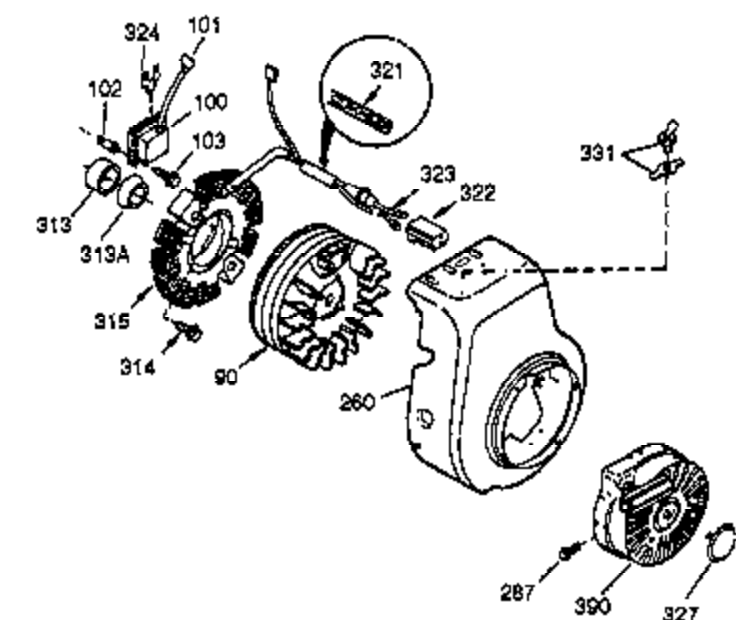


| Ref # | Part Number | Qty | Description |
|-------|-------------|-----|---|
| 1A | 34836 | | Bushing, Cylinder |
| 3 | 27642 | | Pipe plug, 1/4-18 |
| 6 | 32600 | | Seal, Oil |
| 7 | 29314B | | Intake Valve (Std.) (Incl. 11) |
| 7 | 29315C | | Intake Valve (1/32" OS) (Incl. 11) |
| 8 | 29313C | | Exhaust Valve (Std.) (Incl. 11) |
| 8 | 34776 | | Exhaust Valve (Std.) (Incl. 11) |
| 8 | 34777 | | Exhaust Valve (1/32" OS) (Incl. 11) |
| 9 | 31671 | | Valve Spring Cap (Used in early produ ction) |
| 10 | 31672 | | Spring, Valve |
| 11 | 31673 | | Valve Spring Cap |
| 12 | 35121 | | Crankshaft (Incl. 23) |
| 14A | 32538B | | Piston & Pin Ass'y.(Std.)(2-1/2")(Inc l.16) |
| 14A | 32548B | | Piston & Pin Ass'y. (.010" OS) (Incl. 16) |
| 14A | 32549B | | Piston & Pin Ass'y. (.020" OS) (Incl. 16) |
| 16 | 20381 | | Ring, Piston retaining |
| 17 | 32875 | | Rod Assy., Connecting (Incl. 18 & 19) |
| 18 | 32654 | | Dipper, Oil |
| 21 | 27241 | | Lifter, Valve |
| 22 | 30756B | | Cover, Cylinder (Incl. 23, 26, 28 & 3 4) (BB) |
| 23 | 28540 | | Seal, Oil |
| 24 | 27677A | | * Gasket, Cylinder cover |
| 28 | 29673 | | * Gasket, Oil fill plug |
| 34 | 30574 | | Shaft, Mechanical governor |
| 35 | 35479 | | Washer, Flat |
| 36 | 30591 | | Gear Assy., Governor (Incl. 35) |
| 37 | 29193 | | Ring, Retaining |
| 38 | 30588A | | Spool, Governor |
| 39 | 29953C | | * Gasket, Cylinder head |
| 41A | 650694A | | Screw, 5/16-18 x 2" (Use as required) |
| 44 | 27234A | | * Gasket, Valve spring cover (Two requi red) |
| 47 | 34146 | | Cover, Valve spring |
| 51 | 26754A | | * Gasket, Intake to cylinder |
| 52 | 28416A | | Pipe, Intake (Incl. 54) |
| 53 | 650664 | | Screw, 1/4-20 x 1-19/32" |
| 54 | 650840 | | Screw, 1/4-20 x 1-7/32" |
| 55 | 6201 | | Screw, 1/4-28 x 7/8" |
| 56 | 26756 | | * Gasket, Carburetor to intake |
| 56A | 27272A | | * Gasket, Carburetor to air cleaner |
| 57 | 29752 | | Nut & Lockwasher Assy., 1/4-28 |
| 58B | 31545 | | Air Cleaner Ass'y. (Incl. 56A, 59A, 60A, 61 & 62) (Use as required) |
| 58A | 730127 | | Air Cleaner Ass'y. (Incl.56A, 58, 59, 60, 66, 67 & 170) (Use as required) |
| 58A | 730164 | | Air Cleaner Ass'y. (Incl. 56A, 58, 59, 60, 66, 67 & 170A) (Use as required) |
| 69A | 730162 | | Kit, Exhaust adapter (Incl. 69 & 77B) (Use as required) (Not for use on PTO side exhaust) |
| 70A | 30996 | | Muffler |
| 77B | 650493 | | Screw, 1/4-20 x 1-3/4" |
| 79 | 31858 | | Link, Throttle |

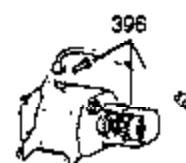
| Ref # | Part Number | Qty | Description |
|-------|-------------|-----|--|
| 87 | 33858A | | Control Bracket (Incl.88,89,100,101 & 157) NOTE: In original production the speed control assembly is riveted to the blower housing baffle (Ref. #107). Replacement speed control assembly includes screws (Ref. #101)and nuts (Ref. #100) for mounting. |
| 88 | 31342 | | Spring, Compression |
| 98 | 33857 | | Spring Assy., Extension (Incl. 98A) |
| 105 | 28277 | | Washer, Flat |
| 106 | 31334 | | Rod, Governor |
| 107 | 33342 | | Baffle, Blower housing |
| 108A | 650701 | | Screw, 8-18 x 7/16" |
| 108 | 650561 | | Screw, 1/4-20 x 5/8" |
| 109 | 33341 | | Baffle, Extension |
| 111 | 34080 | | Spacer, Flywheel key |
| 112 | 34443A | | Solid State Ass'y. |
| 113 | 650872 | | Stud, Solid State mounting |
| 114 | 650814 | | Screw, Torx T-15, 10-24 x 1" |
| 115 | 610961 | | Flywheel key |
| 116 | 610118 | | Cover, Spark plug (Use as required) |
| 117 | 35182 | | Ground Wire Ass'y. |
| 122 | 29212 | | Screw, 1/4-28 x 7/16" |
| 123 | 650168 | | Washer |
| 124 | 650890 | | Lockwasher, 5/16 |
| 131 | 34694 | | Cup, Starter |
| 136B | 29752 | | Nut & Lockwasher Assy., 1/4-28 |
| 138 | 29745 | | Extension, Blower housing |
| 139 | 34212 | | Bracket, Hold down |
| 140 | 30200 | | Screw, 10-24 x 9/16" |
| 141 | 34156A | | Fuel Tank (Incl. 142 & 156) NOTE: These tanks were built with different size fuel inlet openings. Tanks with the 1-3/16" I.D. opening use fuel cap 33032 or 34210. Tanks with the 1-1/2" I.D. opening use fuel cap 35355. |
| 142 | 33032 | | Cap, Fuel filler (Use as required) |
| 142 | 410144B | | Cap, Fuel filler (Std.) (Use as required) |
| 143 | 34183A | | Plate, Fuel tank mounting |
| 144 | 34182 | | Fuel Tank Bracket |
| 145 | 650561 | | Screw, 1/4-20 x 5/8" |
| 146 | 650665 | | Screw, 1/4-15 x 7/8" |
| 147 | 28212 | | Spacer, Tank bracket (Not used in all models) |
| 155 | 29774 | | Fuel Line (Braided, 8-1/4") (Use as required) |
| 155 | 30705 | | Fuel Line (Braided, 16") (Use as required) |
| 156 | 26460 | | Clamp, Fuel line (Use as required) |
| 157 | 610973 | | Terminal Ass'y. (Use as required) |
| 161 | 34594 | | Rod, Choke |
| 163 | 730571 | | Str.Muff Kit(Incl.163A,163B,163C)(Opt.) |
| 163A | 32203 | | Air Cleaner, Starter (Optional) |
| 163B | 32204 | | Bracket, Starter air cleaner (Optional) |
| 163C | 34870 | | Decal, Instruction (Optional) |
| 167 | 34783 | | Filter, Pre-air |
| 168 | 34782 | | Element Assy., Air cleaner (Incl. 176) |
| 175 | 650826 | | Stud, 1/4-20 |
| 176 | 650825 | | Nut & Lockwasher, 1/4-20 |
| 177 | 34701 | | Bracket, Air cleaner |
| 190A | 34704 | | Decal, Air cleaner |
| 190F | 35344 | | Decal, Instruction |
| 190C | 34346 | | Decal, Instruction |
| 194A | 631021 | | Inlet Needle Seat & Clip Assy. |

| Ref # | Part Number | Qty | Description |
|-------|-------------|-----|--|
| 195A | 632229 | | Carburetor (Incl. 56) (Refer to Division 5, Section A, page 182 for breakdown) |
| 197 | 590420 | | Starter, Rewind In original production, the starter may be riveted to the blowerhousing. If the starter or blower housing needs replacement, the other may need holes used for pop riveting enlarged to use standard mounting hardware. Order 4 nuts (29752) required to mount starter to replacement blower |
| 198A | 33290D | | Electric Starter Motor (120 volt) This 120-Volt starter motor kit can be used on those models equipped with electric starter provisions. Refer to Division 5, Section D, Page 16 for breakdown. |
| 200 | 33233A | | * Gasket Set (Incl. items marked *) |

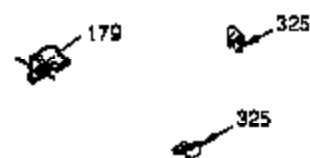
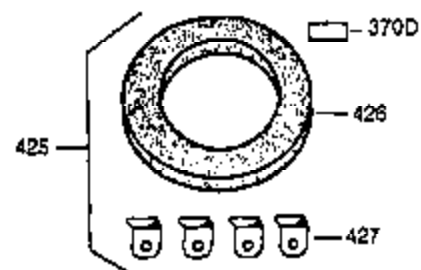
ILLUSTRATION SHOWS TYPICAL PARTS ONLY. ORDER BY PART NUMBER. PARTS NOT LISTED ARE SUPPLIED BY OEM.



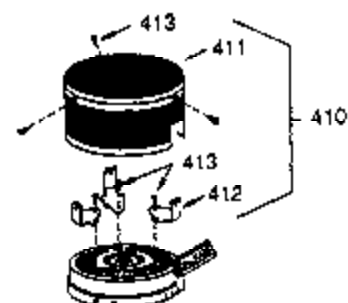
OPTIONAL 110 - 120 VOLT
STARTER MOTOR KIT



STARTER MUFF KIT
(OPTIONAL)



OPTIONAL
DEBRIS SCREEN KIT



| Ref # | Part Number | Qty | Description |
|-------|-------------|-----|--|
| 1A | 34836 | | Bushing, Cylinder |
| 3 | 27642 | | Pipe plug, 1/4-18 |
| 6 | 32600 | | Seal, Oil |
| 7 | 29314B | | Intake Valve (Std.) (Incl. 11) |
| 7 | 29315C | | Intake Valve (1/32" OS) (Incl. 11) |
| 8 | 29313C | | Exhaust Valve (Std.) (Incl. 11) |
| 8 | 34776 | | Exhaust Valve (Std.) (Incl. 11) |
| 8 | 34777 | | Exhaust Valve (1/32" OS) (Incl. 11) |
| 9 | 31671 | | Valve Spring Cap (Used in early produ ction) |
| 10 | 31672 | | Spring, Valve |
| 11 | 31673 | | Valve Spring Cap |
| 12 | 35121 | | Crankshaft (Incl. 23) |
| 14A | 32538B | | Piston & Pin Ass'y.(Std.)(2-1/2")(Inc l.16) |
| 14A | 32548B | | Piston & Pin Ass'y. (.010" OS) (Incl. 16) |
| 14A | 32549B | | Piston & Pin Ass'y. (.020" OS) (Incl. 16) |
| 21 | 27241 | | Lifter, Valve |
| 22 | 30756B | | Cover, Cylinder (Incl. 23, 26, 28 & 3 4) (BB) |
| 24 | 27677A | | * Gasket, Cylinder cover |
| 34 | 30574 | | Shaft, Mechanical governor |
| 39 | 29953C | | * Gasket, Cylinder head |
| 41A | 650694A | | Screw, 5/16-18 x 2" (Use as required) |
| 44 | 27234A | | * Gasket, Valve spring cover (Two requi red) |
| 47 | 34146 | | Cover, Valve spring |
| 51 | 26754A | | * Gasket, Intake to cylinder |
| 52 | 28416A | | Pipe, Intake (Incl. 54) |
| 53 | 650664 | | Screw, 1/4-20 x 1-19/32" |
| 54 | 650840 | | Screw, 1/4-20 x 1-7/32" |
| 55 | 6201 | | Screw, 1/4-28 x 7/8" |
| 56A | 27272A | | * Gasket, Carburetor to air cleaner |
| 56 | 26756 | | * Gasket, Carburetor to intake |
| 57 | 29752 | | Nut & Lockwasher Assy., 1/4-28 |
| 58A | 730127 | | Air Cleaner Ass'y. (Incl.56A, 58, 59, 60, 66, 67 & 170) (Use as required) |
| 58A | 730164 | | Air Cleaner Ass'y. (Incl. 56A, 58, 59, 60, 66, 67 & 170A) (Use as required) |
| 58B | 31545 | | Air Cleaner Ass'y. (Incl. 56A, 59A, 60A, 61 & 62) (Use as required) |
| 69A | 730162 | | Kit, Exhaust adapter (Incl. 69 & 77B) (Use as required) (Not for use on PTO side exhaust) |
| 70A | 30996 | | Muffler |
| 77B | 650493 | | Screw, 1/4-20 x 1-3/4" |
| 79 | 31858 | | Link, Throttle |
| 87 | 33858A | | Control Bracket (Incl.88,89,100,101 & 157) NOTE: In original production the speed control assembly is riveted to the blower housing baffle (Ref. #107). Replacement speed control assembly includes screws (Ref. #101)and nuts (Ref. #100) for mounting. |
| 88 | 31342 | | Spring, Compression |
| 100 | 30322 | | Locknut, 8-32 (Use as required) |
| 101 | 650139 | | Screw, 8-32 x 1/2" (Use as required) |
| 101 | 650152 | | Screw, 8-32 x 3/8" (Use as required) |
| 101 | 30200 | | Screw, 10-24 x 9/16" (Use as required) |
| 105 | 28277 | | Washer, Flat |
| 106 | 31334 | | Rod, Governor |
| 107 | 33342 | | Baffle, Blower housing |

| Ref # | Part Number | Qty | Description |
|-------|-------------|-----|--|
| 108A | 650701 | | Screw, 8-18 x 7/16" |
| 108 | 650561 | | Screw, 1/4-20 x 5/8" |
| 109 | 33341 | | Baffle, Extension |
| 111 | 34080 | | Spacer, Flywheel key |
| 112 | 34443A | | Solid State Ass'y. |
| 113 | 650872 | | Stud, Solid State mounting |
| 114 | 650814 | | Screw, Torx T-15, 10-24 x 1" |
| 115 | 610961 | | Flywheel key |
| 116 | 610118 | | Cover, Spark plug (Use as required) |
| 117 | 35182 | | Ground Wire Ass'y. |
| 122 | 29212 | | Screw, 1/4-28 x 7/16" |
| 123 | 650168 | | Washer |
| 124 | 650890 | | Lockwasher, 5/16 |
| 131 | 34694 | | Cup, Starter |
| 133 | 650816 | | Nut, Flywheel |
| 136B | 29752 | | Nut & Lockwasher Assy., 1/4-28 |
| 138 | 29745 | | Extension, Blower housing |
| 139 | 34212 | | Bracket, Hold down |
| 140 | 30200 | | Screw, 10-24 x 9/16" |
| 141 | 34156A | | Fuel Tank (Incl. 142 & 156) NOTE: These tanks were built with different size fuel inlet openings. Tanks with the 1-3/16" I.D. opening use fuel cap 33032 or 34210. Tanks with the 1-1/2" I.D. opening use fuel cap 35355. |
| 142 | 33032 | | Cap, Fuel filler (Use as required) |
| 142 | 410144B | | Cap, Fuel filler (Std.) (Use as required) |
| 143 | 34183A | | Plate, Fuel tank mounting |
| 144 | 34182 | | Fuel Tank Bracket |
| 145 | 650561 | | Screw, 1/4-20 x 5/8" |
| 146 | 650665 | | Screw, 1/4-15 x 7/8" |
| 147 | 28212 | | Spacer, Tank bracket (Not used in all models) |
| 155 | 29774 | | Fuel Line (Braided, 8-1/4") (Use as required) |
| 155 | 30705 | | Fuel Line (Braided, 16") (Use as required) |
| 156 | 26460 | | Clamp, Fuel line (Use as required) |
| 157 | 610973 | | Terminal Ass'y. (Use as required) |
| 161 | 34594 | | Rod, Choke |
| 163A | 32203 | | Air Cleaner, Starter (Optional) |
| 163B | 32204 | | Bracket, Starter air cleaner (Optional) |
| 163C | 34870 | | Decal, Instruction (Optional) |
| 163 | 730571 | | Str.Muff Kit(Incl.163A,163B,163C)(Opt .) |
| 167 | 34783 | | Filter, Pre-air |
| 168 | 34782 | | Element Assy., Air cleaner (Incl. 176) |
| 175 | 650826 | | Stud, 1/4-20 |
| 176 | 650825 | | Nut & Lockwasher, 1/4-20 |
| 177 | 34701 | | Bracket, Air cleaner |
| 179 | 650513 | | Nut, Wing, 1/4-20 |
| 190F | 35344 | | Decal, Instruction |
| 190C | 34346 | | Decal, Instruction |
| 190A | 34704 | | Decal, Air cleaner |
| 194A | 631021 | | Inlet Needle Seat & Clip Assy. |
| 195A | 632229 | | Carburetor (Incl. 56) (Refer to Division 5, Section A, page 182 for breakdown) |
| 197 | 590420 | | Starter, Rewind In original production, the starter may be riveted to the blowerhousing. If the starter or blower housing needs replacement, the other may need holes used for pop riveting enlarged to use standard mounting hardware. Order 4 nuts (29752) required to mount starter to replacement blower |

| Ref # | Part Number | Qty | Description |
|-------|-------------|-----|---|
| 198A | 33290D | | Electric Starter Motor (120 volt) This 120-Volt starter motor kit can be used on those models equipped with electric starter provisions. Refer to Division 5, Section D, Page 16 for breakdown. |