

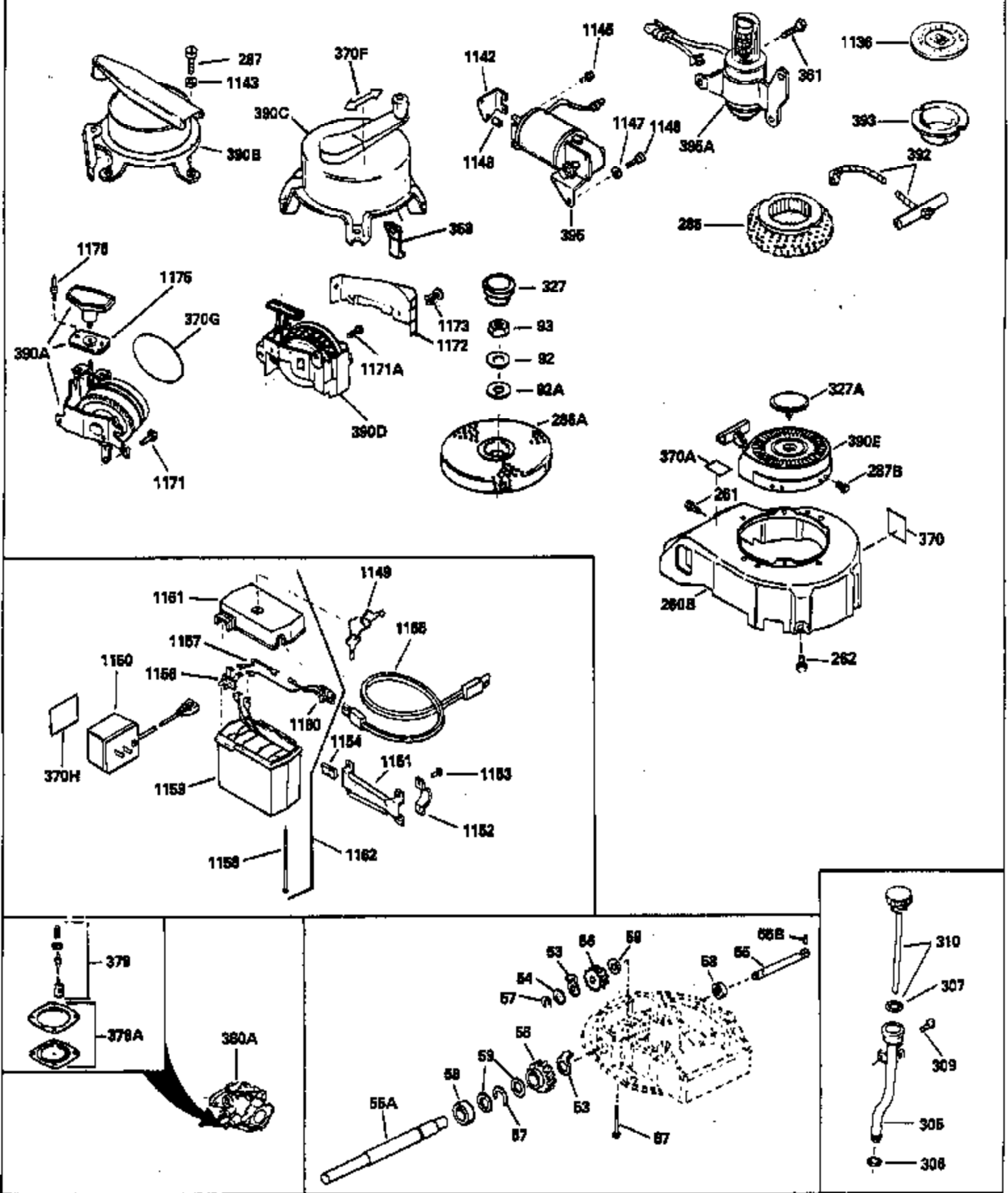
ILLUSTRATION SHOWS TYPICAL PARTS ONLY. ORDER BY PART NUMBER. PARTS NOT LISTED ARE SUPPLIED BY OEM.



| Ref # | Part Number | Qty | Description |
|-------|-------------|-----|---|
| 1 | 34429A | | Cylinder (Incl. 2 & 20) (2-5/8" Bore) |
| 2 | 26727 | | Pin, Dowel |
| 14 | 28277 | | Washer, Flat |
| 15 | 30589 | | Rod, Governor (Incl. 14) |
| 16 | 32651 | | Lever, Governor |
| 17 | 31335 | | Clamp, Governor lever (Clamp is positioned towardspark plug end on 1977-78 and latermodels. It is positioned opposite spark plugend on earlier models.) |
| 18 | 650548 | | Screw, 8-32 x 5/16" |
| 19 | 32863 | | Spring, Governor |
| 20 | 32600 | | Seal, Oil |
| 30 | 32881B | | Crankshaft |
| 32 | 32323 | | Washer, Thrust |
| 40 | 34851 | | Piston, Pin & Ring Set (Std.) (2-5/8" Bore) |
| 40 | 34852 | | Piston, Pin & Ring Set (.010" OS) |
| 40 | 34853 | | Piston, Pin & Ring Set (.020" OS) |
| 41 | 32603B | | Piston & Pin Ass'y.(Std.)(Incl. 43)(2 -5/8") |
| 41 | 32604B | | Piston & Pin Ass'y. (.010" OS) (Incl. 43) |
| 41 | 32605B | | Piston & Pin Ass'y. (.020" OS) (Incl. 43) |
| 42 | 34854 | | Ring Set (Std.) (2-5/8" Bore) |
| 42 | 34855 | | Ring Set (.010" OS) |
| 42 | 34856 | | Ring Set (.020" OS) |
| 43 | 20381 | | Ring, Piston pin retaining |
| 45 | 32875 | | Rod Assy., Connecting (Incl. 18) |
| 46A | 32609 | | Plate, Lock (Do not use with 32610A locking type screw) |
| 46 | 32610 | | Connecting Rod Bolt (Early Production) |
| 46 | 32610A | | Bolt, Connecting rod |
| 48A | 27241 | | Lifter, Intake valve |
| 48 | 27241 | | Lifter, Exhaust valve |
| 50 | 33553 | | Camshaft (MCR) |
| 52 | 29914 | | Pump Assy., Oil |
| 60 | 29745 | | Extension, Blower housing |
| 66 | 30063 | | Screw, Torx T-30, 1/4-20 x 1/2" |
| 69 | 35261 | | * Gasket, Mounting flange |
| 70 | 34311C | | Mounting Flange Ass'y. (Incl. 72, 75 & 80) |
| 72A | 9556 | | Oil Drain Plug (Use as required) |
| 72 | 30572 | | Plug, Oil drain (Incl. 73) |
| 73 | 28833 | | * Drain Plug Gasket (Do not use w/plastic plug) |
| 75 | 27897 | | Seal, Oil |
| 80 | 30574 | | Shaft, Mechanical governor |
| 81 | 30590A | | Washer, Flat |
| 82 | 30591 | | Gear Assy., Governor (Incl. 81) |
| 83 | 30588A | | Spool, Governor |
| 84 | 29193 | | Ring, Retaining |
| 86 | 650488 | | Screw, 1/4-20 x 1-1/4" |
| 89 | 610951 | | Key, Flywheel |
| 90 | 610963 | | Flywheel (W/Ring Gear) |
| 92 | 650815 | | Washer, Belleville |
| 93 | 650607 | | Nut, Flywheel |
| 100 | 610946A | | Stator Ass'y. (Incl. 103 & 110) |
| 101 | 27276 | | Cover, Spark plug |
| 103 | 650167 | | Screw, 1/4-20 x 1/2" |
| 110 | 35349 | | Ground Wire |
| 119 | 33015A | | * Gasket, Cylinder head |
| 120 | 33016A | | Head, Cylinder (Incl. 131) |
| 125 | 29313C | | Exhaust Valve (STD)(Incl. 151) (Conventional Ports) |
| 125 | 29315C | | Exhaust Valve (1/32" OS)(Incl. 151) (Conventional Ports) |

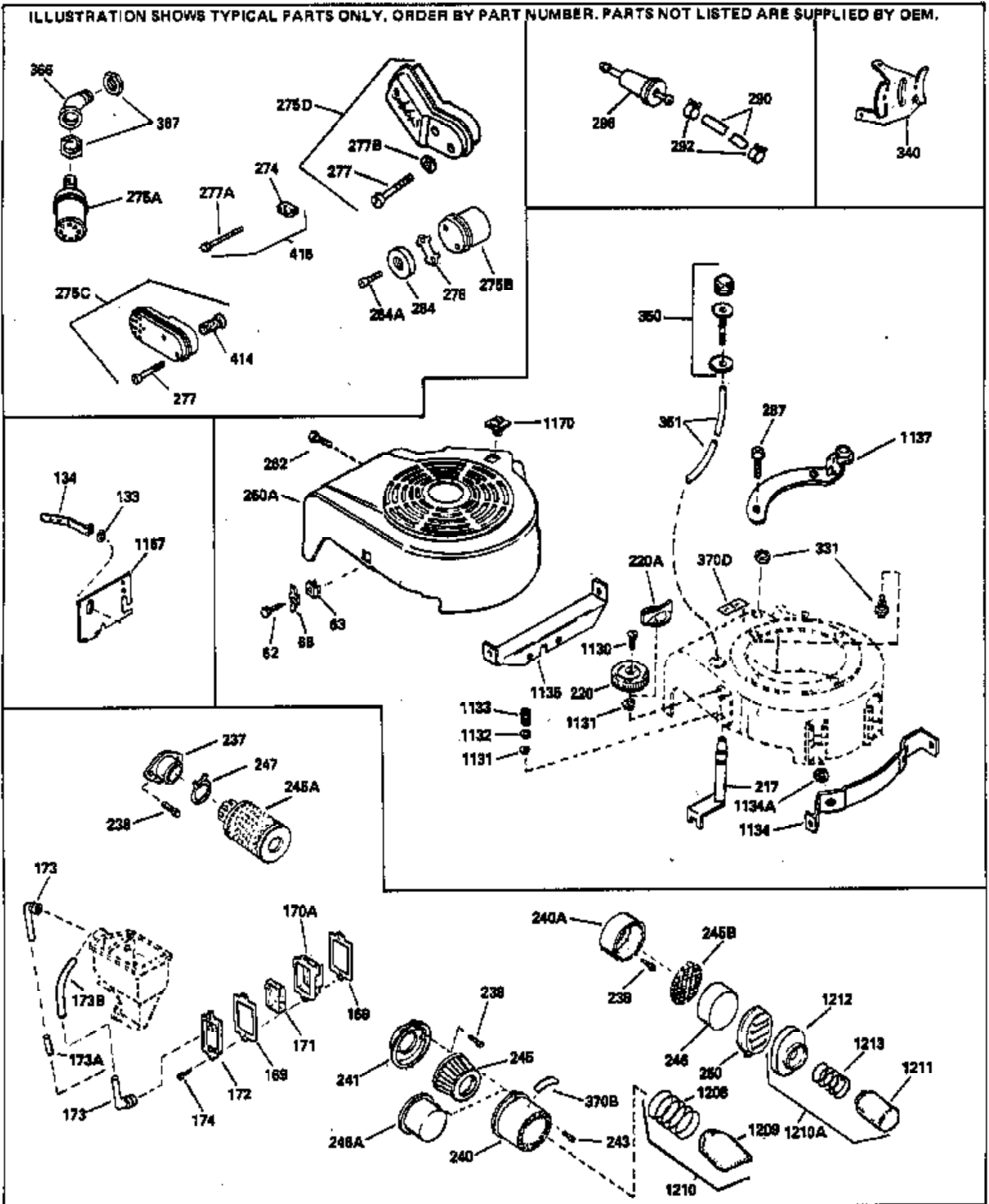
| Ref # | Part Number | Qty | Description |
|-------|-------------|-----|--|
| 126 | 29314B | | Intake Valve (STD)(Incl. 151) (Conventional Ports) |
| 126 | 29315C | | Intake Valve (1/32" OS)(Incl. 151) (Conventional Ports) |
| 127 | 26073 | | Washer (Not used in late production) |
| 127 | 650691 | | Washer (Used on late production) |
| 130 | 6021A | | Screw, 5/16-18 x 1-1/2" (Use as required) |
| 130 | 650818 | | Screw, 5/16-18 x 1-1/2" (Use as required) |
| 131 | 650694A | | Screw, 5/16-18 x 2" (Use as required) |
| 131 | 650697A | | Screw, 5/16-18 x 2-1/2" (Use as required) |
| 135 | 33636 | | Spark Plug (J-8C) |
| 149 | 31671 | | Valve Spring Cap) (Used in early production) |
| 150 | 31672 | | Spring, Valve |
| 151 | 31673 | | Cap, Lower valve spring |
| 169 | 31619A | | * Gasket, Valve spring cover |
| 170 | 31337A | | Body Assy., Breather (Incl. 169 & 171) |
| 171 | 31410 | | Element, Breather |
| 174 | 650128 | | Screw, 10-24 x 1/2" |
| 178 | 29752 | | Nut & Lockwasher, 1/4-28 |
| 181 | 6201 | | Screw, 1/4-28 x 7/8" |
| 182 | 6201 | | Screw, 1/4-28 x 7/8" |
| 184 | 26756 | | * Gasket, Carburetor |
| 185 | 33004A | | Pipe, Intake (Incl. 224) |
| 186 | 33151 | | Link, Governor spring |
| 200 | 34388 | | Control Bracket (Incl. 206) |
| 207 | 32652 | | Link, Governor-to-throttle |
| 210 | 27793 | | Clip, Conduit |
| 211 | 28942 | | Screw, 10-32 x 3/8" |
| 216 | 33086 | | Lever, Speed adjustment |
| 223 | 650451 | | Screw, 1/4-20 x 1" |
| 224 | 32649A | | * Gasket, Intake |
| 238 | 28820 | | Screw, 10-32 x 1/2" |
| 239 | 27272A | | * Gasket, Air cleaner |
| 261 | 650561 | | Screw, 1/4 20 x 5/8" |
| 277 | 30063 | | Screw, Torx T-30, 1/4-20 x 1/2" (Use as req.) |
| 287A | 29752 | | Nut & Lockwasher, 1/4-28 (Use as required) |
| 287 | | | Pop Rivet (Purchase locally) (3/16" dia.) |
| 287 | 29716 | | Screw, 1/4-28 x 7/16" (Use as required) |
| 287 | 30513 | | Screw & Lockwasher, 1/4-28 x 1/2" |
| 290 | 29774 | | Fuel Line(Braided 8-1/4")(21 cm)(Use as req.) |
| 290 | 34357 | | Fuel Line (Epichlorohydrin 6-3/4") (17 cm) |
| 290 | 30705 | | Fuel Line (Braided 16")(40 cm)(Use as req.) |
| 292 | 26460 | | Fuel Line Clamp (Use as required) |
| 301 | 410144B | | Fuel Cap (Std.) (Use as required) |
| 301 | 33032 | | Fuel Cap (Use as required) |
| 301 | 34210 | | Fuel Cap (use as required) |
| 305 | 34264 | | Oil Fill Tube |
| 313A | 34080 | | Spacer, Key |
| 325A | 27275 | | Clip, Hi-tension wire (Use as required) |
| 325A | 34246 | | Clip, Ground wire |
| 339 | 33892 | | Spacer |
| 370 | 34346 | | Decal, Instruction |
| 379 | 631021 | | Inlet Needle, Seat & Clip Assy. |
| 380 | 632081 | | Carburetor (Incl. 184) (Refer to Division 5, Section A, page 168 or Fiche 6, Grid F-9 for breakdown) |
| 400 | 33238D | | * Gasket Set (Incl. items marked *) |
| 420 | 730225 | | SAE 30 4-Cycle Engine Oil (Quart) |

ILLUSTRATION SHOWS TYPICAL PARTS ONLY. ORDER BY PART NUMBER. PARTS NOT LISTED ARE SUPPLIED BY OEM.



| Ref # | Part Number | Qty | Description |
|-------|-------------|-----|---|
| 19 | 32863 | | Spring, Governor |
| 32 | 32323 | | Washer, Thrust |
| 90 | 610963 | | Flywheel (W/Ring Gear) |
| 92 | 650815 | | Washer, Belleville |
| 92A | 650791 | | Washer, Flat |
| 93 | 650607 | | Nut, Flywheel |
| 100 | 610946A | | Stator Assy. (Incl. 103 & 110) |
| 182 | 6201 | | Screw, 1/4-28 x 7/8" |
| 216 | 33086 | | Lever, Speed adjustment |
| 261 | 650561 | | Screw, 1/4 20 x 5/8" |
| 262 | 650561 | | Screw, 1/4-20 x 5/8" |
| 287 | | | Pop Rivet (Purchase locally) (3/16" d ia.) |
| 287 | 29716 | | Screw, 1/4-28 x 7/16" (Use as require d) |
| 287 | 30513 | | Screw & Lockwasher, 1/4-28 x 1/2" |
| 305 | 34264 | | Oil Fill Tube |
| 306 | 34265 | | Gasket, Oil fill tube |
| 306 | 34282 | | "O" Ring (This "O" ring is required with metal fill tube only when replacement mounting flange with .777 dia. oil fill hole has been used.) |
| 307 | 33590 | | "O" Ring |
| 309 | 650562 | | Screw, 10-32 x 1/2" |
| 310 | 34267 | | Dipstick (Incl. 307) |
| 313A | 34080 | | Spacer, Key |
| 327 | 34113 | | Plug, Screen |
| 358 | 34389A | | Bracket Assy., Rope guide |
| 370 | 34346 | | Decal, Instruction |
| 379 | 631021 | | Inlet Needle, Seat & Clip Assy. |
| 390D | 590532 | | Side Mount Rewind Starter NOTE: Replacement hardware may differ when servicing starter assy. or blower housing. Refer to Service Bulletin 508. (Refer to Division 5, Section C, page 32 or Fiche 6, Grid G-5 for breakdown) |
| 1171 | 650802 | | Screw, 1/4-20 x 5/8" |
| 1175 | 590441 | | Bracket Assy. (Use as required) |
| 1176 | 650639 | | Open End Rivet (Use as required) |

ILLUSTRATION SHOWS TYPICAL PARTS ONLY. ORDER BY PART NUMBER. PARTS NOT LISTED ARE SUPPLIED BY OEM.



| Ref # | Part Number | Qty | Description |
|-------|-------------|-----|---|
| 19 | 32863 | | Spring, Governor |
| 32 | 32323 | | Washer, Thrust |
| 62 | 650760 | | Screw, 8-32 x 3/8" |
| 63 | 28545 | | Grommet, Plastic |
| 68 | 33356 | | Tab, Ground terminal |
| 90 | 610963 | | Flywheel (W/Ring Gear) |
| 100 | 610946A | | Stator Assy. (Incl. 103 & 110) |
| 169 | 31619A | | * Gasket, Valve spring cover |
| 171 | 31410 | | Element, Breather |
| 174 | 650128 | | Screw, 10-24 x 1/2" |
| 182 | 6201 | | Screw, 1/4-28 x 7/8" |
| 216 | 33086 | | Lever, Speed adjustment |
| 238 | 28820 | | Screw, 10-32 x 1/2" |
| 240 | 31715 | | Body, Air cleaner |
| 241 | 31691 | | Bracket, Air cleaner |
| 243 | 650152 | | Screw, 8-32 x 3/8" |
| 245 | 30727 | | Air Cleaner Filter |
| 260A | 34312 | | Blower Housing NOTE: Replacement hardware may differ when servicing starter assy. or blower housing. Refer to Service Bulletin 508. |
| 262 | 650561 | | Screw, 1/4-20 x 5/8" |
| 277 | 30063 | | Screw, Torx T-30, 1/4-20 x 1/2" (Use as req.) |
| 287 | | | Pop Rivet (Purchase locally) (3/16" d ia.) |
| 287 | 29716 | | Screw, 1/4-28 x 7/16" (Use as require d) |
| 287 | 30513 | | Screw & Lockwasher, 1/4-28 x 1/2" |
| 290 | 29774 | | Fuel Line(Braided 8-1/4")(21 cm)(Use as req.) |
| 290 | 34357 | | Fuel Line (Epichlorohydrin 6-3/4") (1 7 cm) |
| 290 | 30705 | | Fuel Line (Braided 16")(40 cm)(Use as req.) |
| 292 | 26460 | | Fuel Line Clamp (Use as required) |
| 296 | 34279B | | Filter, Inline fuel |
| 305 | 34264 | | Oil Fill Tube |
| 313A | 34080 | | Spacer, Key |
| 415 | 730162 | | Muffler Adapter Kit (Incl. 274 & 277A) (Inverted Ports) |
| 1170 | 34271 | | Pulley, Starter rope |
| 1208 | 31667 | | Spring, Pre-cleaner |
| 1209 | 31668 | | Bag, Pre-cleaner |
| 1210 | 730512 | | Pre-cleaner Kit (Incl. 1208 & 1209) |