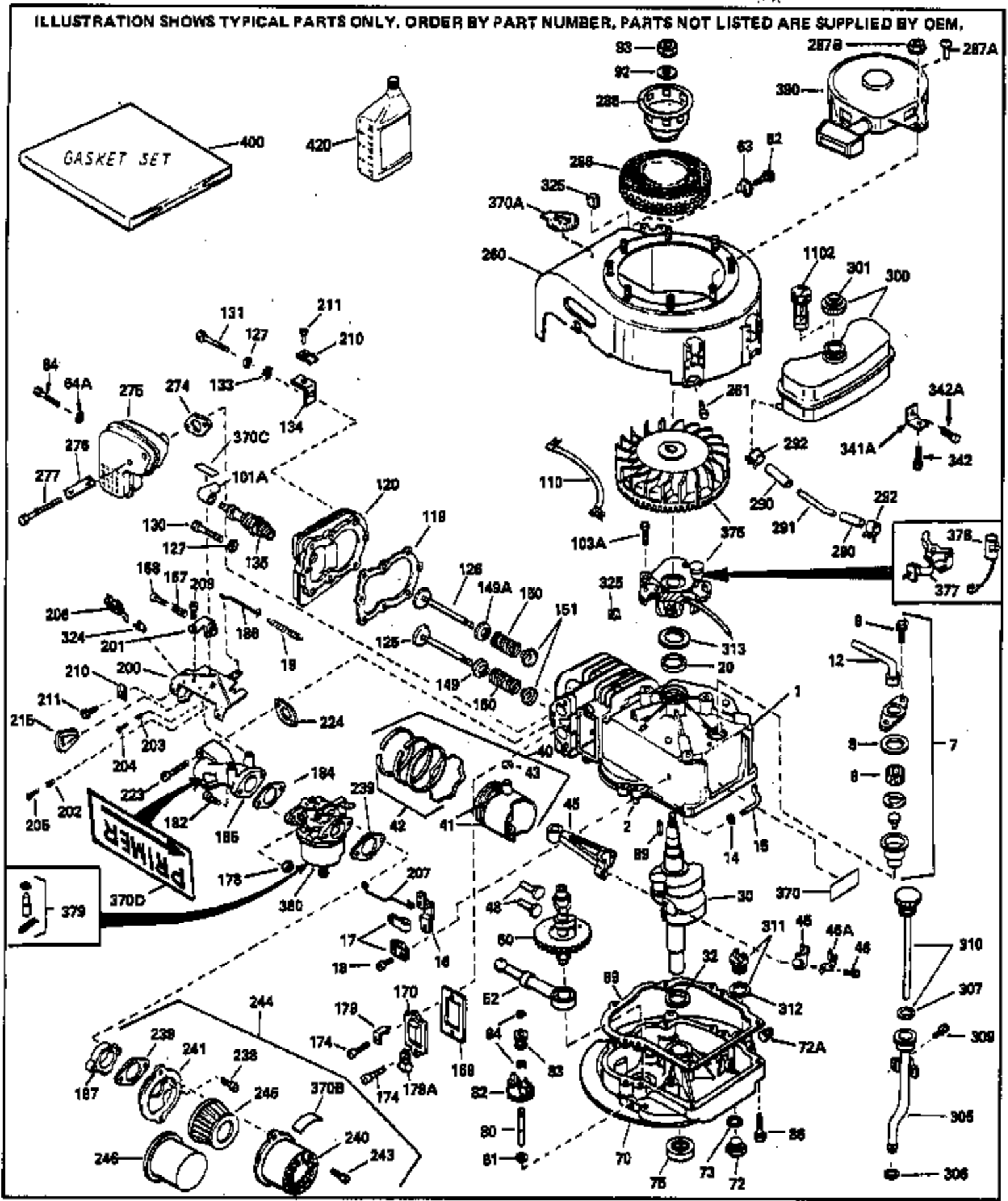


ILLUSTRATION SHOWS TYPICAL PARTS ONLY. ORDER BY PART NUMBER. PARTS NOT LISTED ARE SUPPLIED BY OEM.

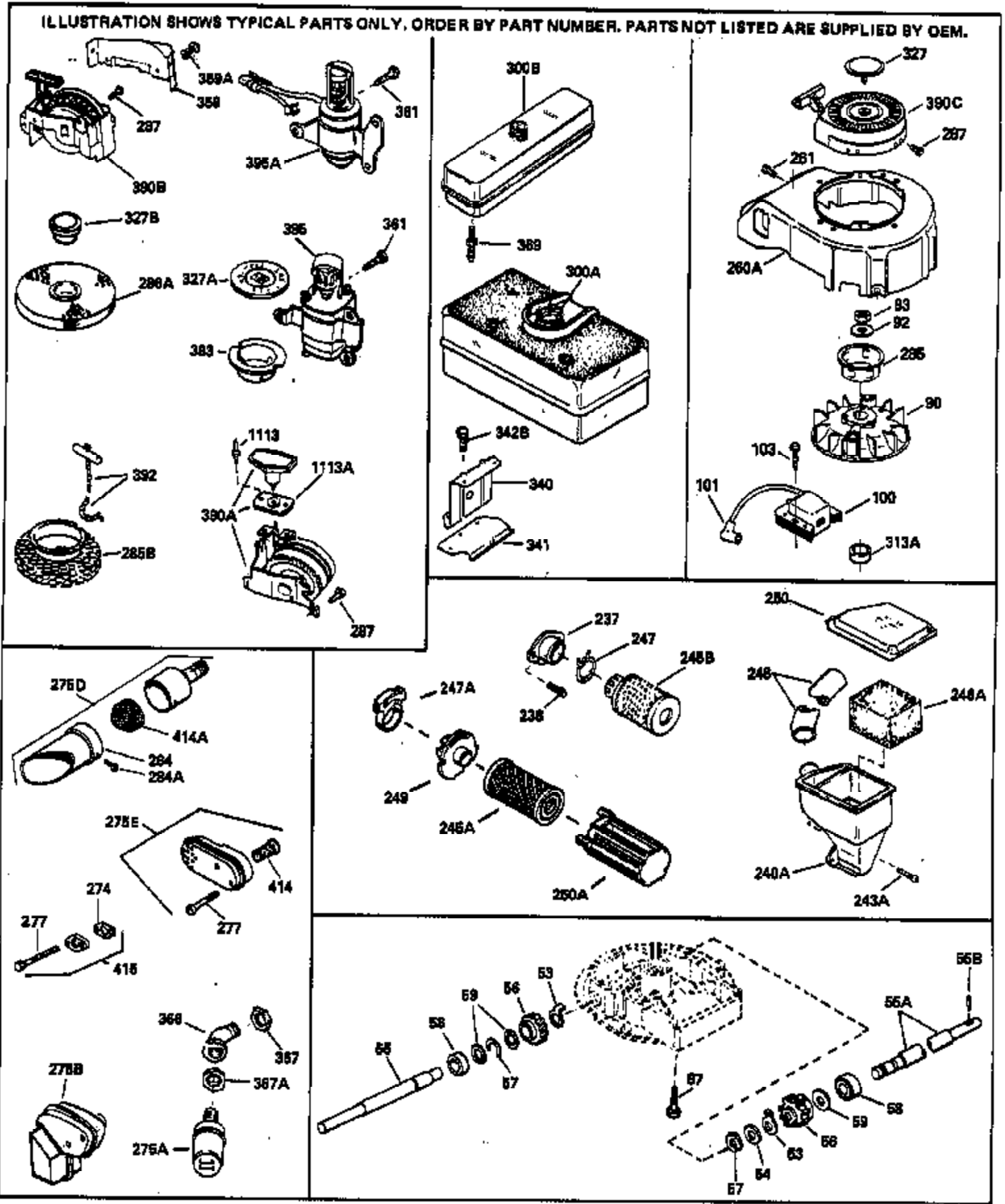


| Ref # | Part Number | Qty | Description   |
|-------|-------------|-----|---|
| 1     | 33968B      |     | Cylinder (Incl. 2 & 20) (2-13/16" Bore)   |
| 2     | 26727       |     | Pin, Dowel  |
| 6     | 33734       |     | Element, Breather   |
| 7     | 34214A      |     | Breather Ass'y. (Incl. 6, 8, 9 & 12)  |
| 8     | 33735       |     | * Gasket, Breather  |
| 9     | 30200       |     | Screw, 10-24 x 9/16"  |
| 12    | 33886       |     | Tube, Breather  |
| 14    | 28277       |     | Washer, Flat  |
| 15    | 31513       |     | Rod, Governor   |
| 16    | 32651       |     | Lever, Governor   |
| 17    | 31335       |     | Clamp, Governor (Clamp is positioned towards spark plug end on 1977-78 and later models. It is positioned opposite spark plug end on earlier models.) |
| 18    | 650548      |     | Screw, 8-32 x 5/16"   |
| 19    | 31361       |     | Spring, Governor  |
| 20    | 32600       |     | Seal, Oil   |
| 30    | 33532       |     | Crankshaft Ass'y.   |
| 40    | 34535       |     | Piston, Pin & Ring Set (Std.) (2-13/16")  |
| 40    | 34536       |     | Piston, Pin & Ring Set (.010" OS)   |
| 40    | 34537       |     | Piston, Pin & Ring Set (.020" OS)   |
| 41    | 33562B      |     | Piston & Pin Ass'y. (Std.) (Incl. 43) (2-13/16")  |
| 41    | 33563B      |     | Piston & Pin Ass'y. (.010" OS) (Incl. 43)   |
| 41    | 33564B      |     | Piston & Pin Ass'y. (.020" OS) (Incl. 43)   |
| 42    | 33567       |     | Ring Set (Std.) (2-13/16" Bore)   |
| 42    | 33568       |     | Ring Set (.010" OS)   |
| 42    | 33569       |     | Ring Set (.020" OS)   |
| 43    | 20381       |     | Ring, Piston pin retaining  |
| 45    | 32875       |     | Rod Assy., Connecting (Incl. 18)  |
| 46    | 32610       |     | Bolt, Connecting rod (Early Production)   |
| 46    | 32610A      |     | Bolt, Connecting rod  |
| 46A   | 32609       |     | Plate, Lock (Do not use with No. 32610A locking type bolt.)   |
| 48    | 27241       |     | Lifter, Valve   |
| 50    | 33533       |     | Camshaft (MCR)  |
| 52    | 29914       |     | Pump Assy., Oil   |
| 69    | 35261       |     | * Gasket, Mounting flange   |
| 70    | 33535B      |     | Flange Ass'y. (Incl. 58, 72, 75, 80 & 306)  |
| 72    | 30572       |     | Plug, Oil drain (Incl. 73)  |
| 73    | 28833       |     | * Drain Plug Gasket (Not used w/ plastic plug)  |
| 75    | 26208       |     | Seal, Oil   |
| 80    | 30574       |     | Shaft, Mechanical governor  |
| 81    | 30590A      |     | Washer, Flat  |
| 82    | 30591       |     | Gear Assy., Governor (Incl. 81)   |
| 83    | 30588A      |     | Spool, Governor   |
| 84    | 29193       |     | Ring, Retaining   |
| 86    | 650488      |     | Screw, 1/4-20 x 1-1/4"  |
| 89    | 610951      |     | Key, Flywheel   |
| 92    | 650815      |     | Washer, Belleville  |
| 93    | 650607      |     | Nut, Flywheel   |
| 103A  | 650489      |     | Screw, 1/4-20 x 5/8"  |
| 110   | 34231       |     | Wire, Ground  |
| 119   | 33554A      |     | * Gasket, Cylinder head   |
| 120   | 33016A      |     | Head, Cylinder (Incl. 131)  |
| 125   | 29313C      |     | Exhaust Valve (Std.) (Incl. 151) (Conventional Ports)   |
| 125   | 29315C      |     | Exhaust Valve (1/32" OS) (Incl. 151) (Conventional Ports)   |
| 126   | 29314B      |     | Intake Valve (Std.) (Incl. 151) (Conventional Ports)  |
| 126   | 29315C      |     | Intake Valve (1/32" OS) (Incl. 151) (Conventional Ports)  |
| 127   | 26073       |     | Washer, Flat (Not used on late production)  |

| Ref # | Part Number | Qty | Description   |
|-------|-------------|-----|---|
| 127   | 650691      |     | Washer, Flat (Use as required)  |
| 130   | 650818      |     | Screw, 5/16-18 x 1-1/2" (Use as required)   |
| 130   | 6021A       |     | Screw, 5/16-18 x 1-1/2" (Use as required)   |
| 131   | 650694A     |     | Screw, 5/16-18 x 2" (Use as required)   |
| 135   | 34251       |     | Resistor Spark Plug (RJ17LM)  |
| 149   | 31671       |     | Upper Cap (Int. & Ex.)(Early Production)  |
| 149A  | 31671       |     | Cap, Upper valve spring (Intake)  |
| 150   | 31672       |     | Spring, Valve   |
| 151   | 31673       |     | Cap, Lower valve spring   |
| 167   | 32924       |     | Spring, Compression   |
| 168   | 650688      |     | Screw, 10-32 x 1"   |
| 169   | 27234A      |     | * Gasket, Valve spring cover  |
| 170   | 32755       |     | Cover, Valve spring box   |
| 174   | 650128      |     | Screw, 10-24 x 1/2"   |
| 178   | 29752       |     | Nut & Lockwasher Assy.  |
| 179   | 30593       |     | Clip, Magneto wire  |
| 182   | 6201        |     | Screw, 1/4-28 x 7/8"  |
| 184   | 26756       |     | * Gasket, Carburetor  |
| 185   | 33004A      |     | Pipe, Intake (Incl. 224)  |
| 186   | 34358       |     | Link, Governor spring   |
| 200   | 33155A      |     | Control Assy., Speed (Incl. 206)  |
| 201   | 33150       |     | Bracket, Control  |
| 206   | 610973      |     | Terminal Assy. (Use as required)  |
| 207   | 34336       |     | Link, Throttle  |
| 209   | 30200       |     | Screw, 10-24 x 9/16"  |
| 210   | 27793       |     | Clip, Conduit   |
| 211   | 28942       |     | Screw, 10-32 x 3/8"   |
| 223   | 650451      |     | Screw, 1/4-20 x 1"  |
| 224   | 32649A      |     | * Gasket, Intake  |
| 239   | 33051       |     | * Gasket, Air cleaner   |
| 244   | 730164      |     | Cleaner Kit (Incl. 238 thru 245 & 370 B) (Use as required)  |
| 260   | 32455B      |     | Housing, Blower NOTE: Replacement hardware may differ when servicing starter assy. or blower housing. Refer to Service Bulletin 508.        |
| 261   | 650561      |     | Screw, 1/4-20 x 5/8"  |
| 274   | 26754A      |     | * Gasket, Exhaust (Use as required)   |
| 277   | 650795      |     | Screw, 1/4-20 x 2-1/4"  |
| 277   | 30063       |     | Screw, 1/4-20 x 1/2" (Use as required)  |
| 286A  | 32237       |     | Screen, Starter   |
| 287B  | 29752       |     | Nut & Lockwasher 1/4-28 (Use as required)   |
| 287A  | 650639      |     | Rivet, Open end   |
| 290   | 29774       |     | Fuel Line (Braided 8-1/4") (21 cm)  |
| 290   | 30705       |     | Fuel Line (Braided 16") (40 cm)   |
| 292   | 26460       |     | Clamp, Fuel line  |
| 300   | 32170A      |     | Tank Assy., Fuel (Incl. 292 & 301)  |
| 301   | 410144B     |     | Cap, Fuel (Standard) (Use as required)  |
| 301   | 33032       |     | Cap, Fuel (Use as required)   |
| 305   | 34318       |     | Tube Assy., Oil filler (Plastic)  |
| 306   | 34265       |     | Gasket, Oil fill tube   |
| 306   | 34282       |     | "O" Ring (This "O" ring is required with metal fill tube only when replacement mounting flange with .777 dia. oil fill hole has been used.) |
| 307   | 33590       |     | "O" Ring  |
| 309   | 650562      |     | Screw, 10-32 x 1/2"   |
| 310   | 34319       |     | Dipstick, Oil (Incl. 307) (Twist Lock)  |
| 313   | 33876       |     | Gasket, Stator  |
| 325   | 27275       |     | Clip, Wire retaining  |

| Ref # | Part Number | Qty | Description  |
|-------|-------------|-----|--|
| 325   | 33685       |     | Clip, Wire retaining (Early Productio n)   |
| 370   | 34346       |     | Decal, Instruction   |
| 375   | 610964      |     | Magneto (w/ring gear) NOTE: The complete magneto is not available as an assembly. The magneto number is shown for reference purposes only. Order component parts individually, as shown in parts list. (Refer to Division 5, Section B, page 35 or Fiche 6, Grid F-13 for breakdown) |
| 377   | 30547A      |     | Contact Assy., Breaker   |
| 378   | 30548B      |     | Condenser  |
| 379   | 631021      |     | Inlet Needle, Seat & Clip Assy.  |
| 380   | 631934      |     | Carburetor (Incl. 184) (Refer to Division 5, Section A, page 140 or Fiche 6 Grid E-11 for breakdown)   |
| 400   | 33740D      |     | * Gasket Set (Incl. items marked *)  |
| 420   | 730225      |     | SAE 30, 4-Cycle Engine Oil (Quart)   |

ILLUSTRATION SHOWS TYPICAL PARTS ONLY. ORDER BY PART NUMBER. PARTS NOT LISTED ARE SUPPLIED BY OEM.



| Ref # | Part Number | Qty | Description  |
|-------|-------------|-----|--|
| 53    | 31745       |     | Washer, Tang   |
| 55    | 33536       |     | Shaft, P.T.O.  |
| 56    | 33401       |     | Right Hand Worm Gear   |
| 57    | 33537       |     | Ring, Retaining  |
| 58    | 31744       |     | Seal, Oil  |
| 59    | 31747       |     | Washer, Flat   |
| 87    | 650492      |     | Screw, 1/4-20 x 2-1/4"   |
| 92    | 650815      |     | Washer, Belleville   |
| 93    | 650607      |     | Nut, Flywheel  |
| 240A  | 33005       |     | Body, Air cleaner  |
| 243A  | 650707      |     | Screw  |
| 246A  | 33006       |     | Element, Air cleaner   |
| 248   | 33008       |     | Tube, Air cleaner  |
| 250   | 33007       |     | Cover, Air cleaner   |
| 261   | 650561      |     | Screw, 1/4-20 x 5/8"   |
| 274   | 26754A      |     | * Gasket, Exhaust (Use as required)  |
| 275D  | 391026      |     | Muffler (Incl. 284, 284A & 414A) (This spark arrester muffler can be used on any model with a 3/4-14 tapped exhaust port.)   |
| 277   | 650795      |     | Screw, 1/4-20 x 2-1/4"   |
| 277   | 30063       |     | Screw, 1/4-20 x 1/2" (Use as required )  |
| 284A  | 650578      |     | Screw, 8-18 x 3/8" (Use as required)   |
| 284   | 33700       |     | Cover & Tube, Muffler (Use as required)  |
| 286A  | 32237       |     | Screen, Starter  |
| 287   |             |     | Pop Rivet(Purchase locally)(Use as required)   |
| 327B  | 32236       |     | Plug, Screen   |
| 361   | 650737      |     | Screw, 1/4-20 x 1/2"   |
| 390A  | 590450A     |     | Starter, Side mount rewind NOTE: Replacement hardware may differ when servicing starter assy. or blower housing. Refer to Service Bulletin 508. (Refer to Division 5, Section C, page 27 or Fiche 6, Grid G-4 for breakdown) |
| 414   | 391022      |     | Screen, Muffler  |
| 414A  | 33323       |     | Screen, Muffler (Use as required)  |
| 415   | 730162      |     | Muffler Adapter Kit (Incl. 121 & 128) (Conventional Ports)   |
| 415   | 730165      |     | Muffler Adapter Kit (Incl. 274 & 277) NOTE: This muffler adapter can be used only on models which have exhaust port on top (above intake). (Inverted Ports)  |
| 1113  |             |     | Rivet, Open end (Can be purchased locally)   |
| 1113  | 590441      |     | Bracket Assy.  |