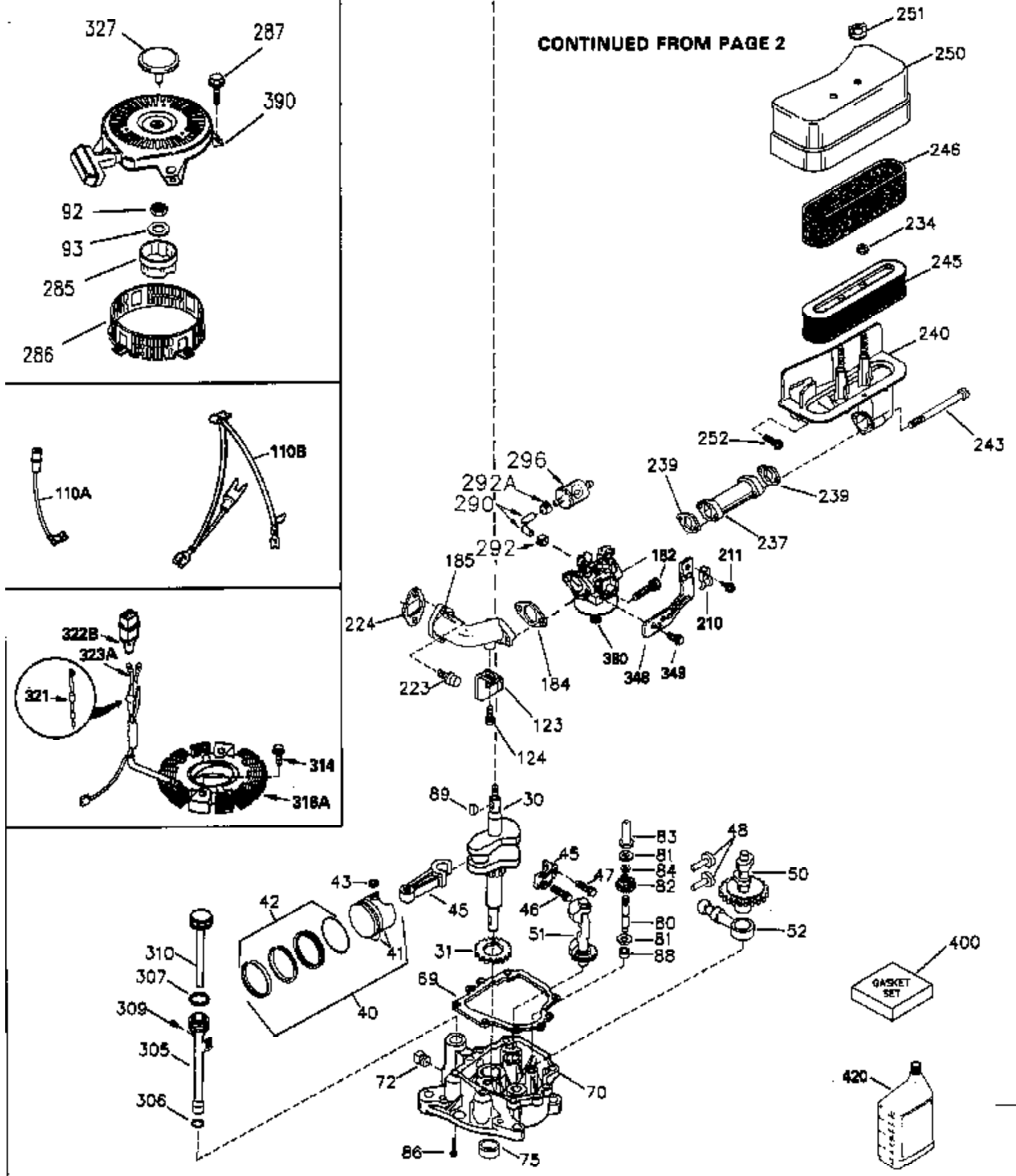


Ref #	Part Number	Qty	Description
1	35943	1	Cylinder (Includes Nos. 2 & 20)
2	27652	2	Dowel Pin
14	28277	1	Flat Washer
14	28277	1	Flat Washer
15	35324	1	Governor Rod
16	35520	1	Governor Lever
17	29916	1	Governor Lever Clamp
18	650548	1	Screw
19	35945	1	Control Spring
20	35319	1	Oil Seal
26	650561	2	Screw
35	29826	1	Governor Lever Screw
36	29918	1	E.T. Lock Washer
37	29216	1	Lock Nut
38	35772	2	Retainer Ring
38	29642	1	Retaining Ring
39	30322	1	Keys Nut & Washer
60	35316A	1	Blower Housing Extension
62	650760	1	Screw, Pan Hd. Taptite, 8-32 x 3/8
63	28545	1	Grommet
64	30063	1	Screw, Torx T-30 Hex washer hd. sems, 1/4-20 x 1/2
64	30063	1	Screw, Torx T-30 Hex Washer Hd. Sems, 1/4-20 x 1/2
65	650128	1	Screw, Hex Hd. Sems, 10-24 x 1/2
68	33356	1	Ground Terminal
90	611093	1	Flywheel Assy. (3 Amp w/ring gear)
92	650880	1	Flywheel Washer
93	650881	1	Flywheel Nut
100	35135	1	Solid State Ignition Module (Sparkie)
102	650872	2	Stud
103	650814	2	Screw, Torx T-15 Hex Washer Hd. Sems, 10-24 x 1
110	35195A	1	Ground Wire Assy.
119	35946	1	Head Gasket
120	35948	1	Cylinder Head
125	35308	1	Exhaust Valve (Stellite) (Std.)
125	35433	1	Exhaust Valve (1/32" Oversized)
126	35309	1	Intake Valve (Std.)
126	35432	1	Intake Valve (1/32" Oversized)
127	650691	6	Flat Washer
128	650690	6	Belleville Washer
130	650946	6	Head Bolt, Screw
135	34645	1	Spark Plug (RN4C or Equivalent)
150	33507	2	Valve Spring
151	33508	2	Valve Spring Cap
153	35949	1	Push Rod Guide
154	650945	1	Rocker Arm Stud
155	35950	1	Rocker Arm
156	650890	2	Internal Lock Washer
157	650947	1	Lock Nut
158	35951	2	Push Rod
159	35952	1	Rocker Arm Cover Gasket
160	35953	1	Rocker Arm Cover
161	30063	4	Screw, Torx T-30 Hex Washer Hd. 1/4-20 x 1/2
169	27896A	1	Valve Chamber Gasket
169	27896A	1	Valve Chamber Gasket
170	28423	1	Breather Body
171	28424	1	Filter Element
172	28425	1	Valve Spring Box Cover
173	35350	1	Breather Tube

Ref #	Part Number	Qty	Description
174	650128	2	Screw, Hex Hd. Sems, 10-24 x 1/2
179	30593	1	Retainer Clip
180	35954	1	Blower Housing Extension
181	30200	2	Screw & Lockwasher
186	35522	1	Throttle Link
186A	35957	1	Choke Link
200	35956	1	Control Bracket (Incl. Nos. 203 & 204)
203	33802	1	Compression Spring
204	650777	1	Filister Hd. Screw, 6-32 X 21/32"
209	650902	2	Screw, Hex Washer Hd. Sems, 10-32 x 7/16
210	27793	1	Conduit Clip
211	28942	1	Screw, Hex washer hd. Sems, 10-32 x 3/8
225	35286	1	Carburetor Tube
260	36234	1	Blower Housing
260	35326	1	Blower Housing Baffle
261	30063	2	Screw, Torx T-30 Hex Washer Hd. Sems, 1/4-20 x 1/2
262	29747B	1	Screw, Hex hd. Sems, 5/16-24 x 21/32
264	650273	2	Screw, Hex hd. Sems, 5/16-18 x 5/8
265	35959	1	Cylinder Head Cover
266	650876	2	Screw, Hex hd. shoulder, 5/16-18 x 1-1/4
270	35292	1	Exhaust Manifold Assy.
270A	35829A	1	Port Liner
271	35293	1	Manifold locking Plate
290	29774	1	Fuel Line (8.25")
292	26460	1	Fuel Line Clamp
314	650873	2	Screw, Hex Hd. Sems, 1/4-20 x 3/4
316	611113	1	Alternater Coil (3 Amp D.C.) (Incl. Nos. 321, 322B & 323A)
321	611161	1	Diode Ass'y
322	611114	1	Connector Body
323	610822	1	Terminal Socket
324	33177	1	Terminal
325	27275	1	Wire Clip
361	30063	4	Screw, Torx T-30 Hex washer hd. Sems, 1/4-20 x 1/2
363	34148	1	Coil Spring
370	34346	1	Decal, Lubrication
370A	34686	1	Decal, Logo
370B	35274	1	Decal, Oil Instruction
395	35763A	1	Starter Motor (12 Volt)

ILLUSTRATION SHOWS TYPICAL PARTS ONLY. ORDER BY PART NUMBER. PARTS NOT LISTED ARE SUPPLIED BY OEM.



Ref #	Part Number	Qty	Description
30	35335A	1	Crankshaft
31	35327	1	Counter-balance Gear (Mach)
40	35776	1	Piston,Pin & Ring Set (Std.) (Incl. Nos. 41, 42 & 43)
40	35777	1	Piston,Pin & Ring Set (.010") (Incl. Nos. 41, 42 & 43)
40	35778	1	Piston,Pin & Ring Set (.020") (Incl. Nos. 41, 42 & 43)
41	35773	1	Piston & Pin Ass'y. (Std.)(Includes No. 43)
41	35774	1	Piston & Pin Ass'y. (.010" Oversized) (Incl. No. 43)
41	35775	1	Piston & Pin Ass'y. (.020" Oversized) (Incl. No. 43)
42	35779	1	Ring Set (Std.)
42	35780	1	Ring Set (.010")
42	35781	1	Ring Set (.020")
45	35330A	1	Connecting Rod Ass'y. (Incl. Nos. 46 & 47)
46	650908	1	Bolt, Connecting Rod
47	650882	1	Bolt, Connecting Rod
48	35313	2	Valve Lifter
50	35939	1	Camshaft
51	35315A	1	Counter-balance Weight Ass'y
52	31356	1	Oil Pump (Mach)
69	35317	1	Engine Mounting Flange Gasket
70	35970	1	Engine Mounting Flange (Incl. Nos. 72, 75 & 80)
72	31927	1	Oil Drain Plug
75	35319	1	Oil Seal
80	35712	1	Governor Shaft
81	35479	1	Flat Washer
81	35479	1	Flat Washer
82	35321	1	Governor Gear Ass'y.
83	35322	1	Governor Spool
84	29193	1	Retaining Ring
86	650833	7	Screw, Hex Washer Hd. Powerlok, 1/4-20 x 1-3/16
88	31707A	1	Governor Gear Spacer
89	32589	1	Flywheel Key
92	650880	1	Flywheel Washer
93	650881	1	Flywheel Nut
123	35288	1	Intake Pipe Brace
124	650738	2	Screw, Hex Washer Spinlock Hd., Thread Forming, 1/4-20 x 5/8
182	650517	2	Screw, Hex Sems, 1/4-20 x 27/32
184	33263	1	Carburetor to Intake Pipe Gasket
185	35955	1	Intake Pipe (Mach)
210	27793	1	Conduit Clip
211	28942	1	Screw, Hex washer hd. Sems, 10-32 x 3/8
223	792028	2	Screw, Hex Hd. Sems, 5/16-18 x 7/8
224	35958	1	Intake Port Gasket
225	35286	1	Carburetor Tube
234	650825	2	Air Cleaner Nut
239	33629	2	Air Cleaner Elbow Gasket
240	35960	1	Air Cleaner Body Assy. (Inc. No. 239)
243	650875	2	Screw, Fil. hd. Sems, 10-32 x 5-1/4
245	35403	1	Air Cleaner Filter
246	35404	1	Pre-Air Filter
250	35961	1	Air Cleaner Cover
251	650886	2	Wing Nut
252	650887	1	Screw, Hex Washer Hd. Self-Drill, Self-Tap, 1/4-20 x 1
285	35985	1	Starter Hub
286	35446	1	Starter Screen
287	29752	4	Nut & Lockwasher Ass'y., 1/4-28
290	29774	1	Fuel Line (8.25")

Ref #	Part Number	Qty	Description
292	26460	1	Fuel Line Clamp
292A	35864	1	Fuel Filter Clamp
296	34279B	1	Fuel Filter Ass'y
305	35972	1	Oil Fill Tube
306	34265	1	Fill Tube Gasket
307	35499	1	"O" Ring
309	650951	1	Shoulder Screw, Hex washer hd. shoulder, 5/16-24 x 25/32
310	35973	1	Oil Gage & Cap Assy.
314	650873	2	Screw, Hex Hd. Sems, 1/4-20 x 3/4
321	611161	1	Diode Ass'y
322B	610921	1	Connector Body
323A	610922	1	Terminal Pin
327	35392	1	Starter Plug
380	632627	1	Carburetor (Incl. No. 184)
390	590671	1	Recoil Starter