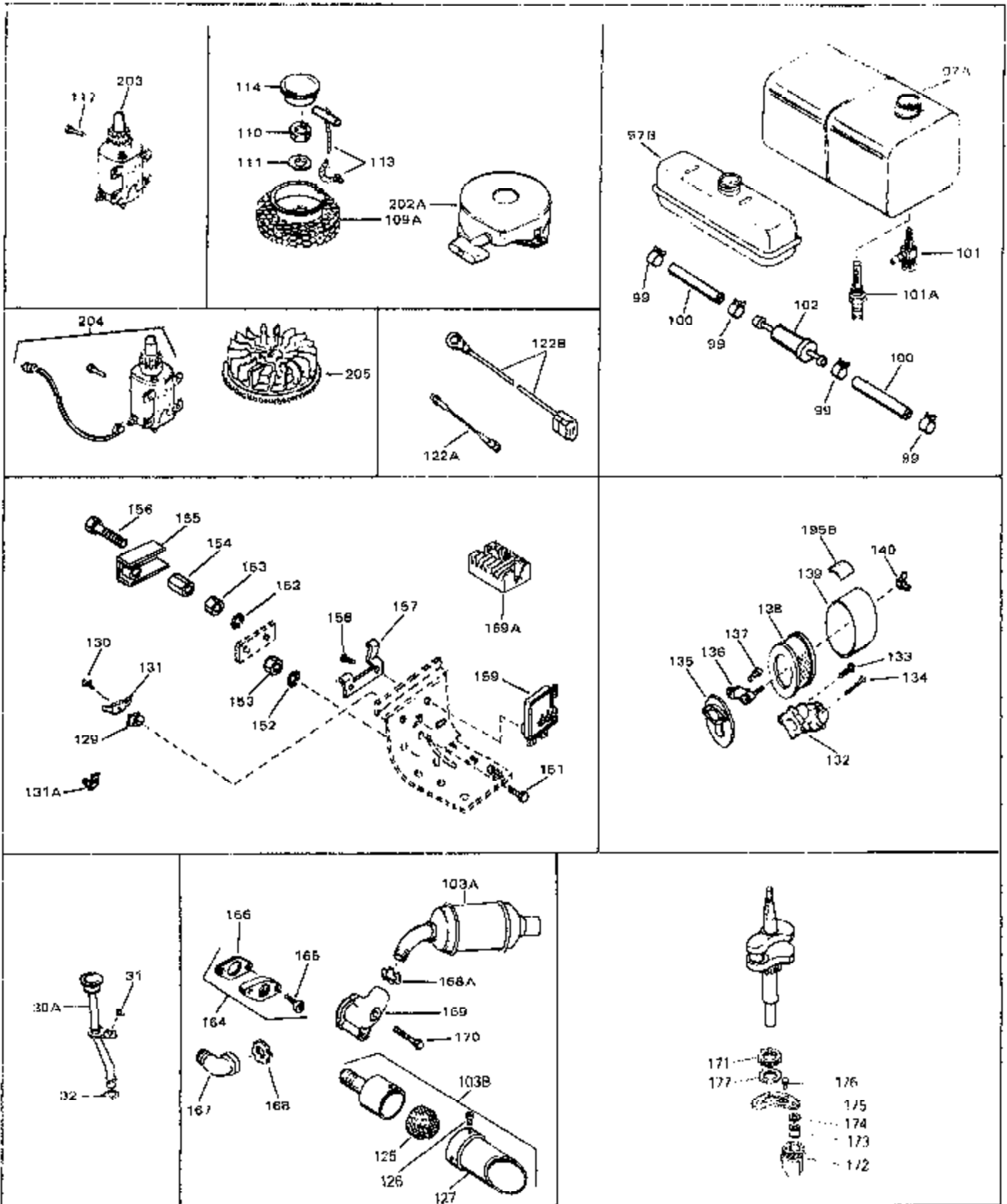


| Ref # | Part Number | Qty | Description |
|-------|-------------|-----|---|
| 1 | 34328A | 0 | Cylinder Assy. (Cast iron liner) (3-1/8" |
| 2 | 27652 | 0 | Pin, Dowel |
| 3 | 32590 | 0 | Plate, Lock & Oil dipper |
| 4 | 32630 | 0 | Seal, Oil |
| 5 | 34035 | 0 | Valve, Intake (Standard) |
| 5 | 34036 | 0 | Valve, Intake (1/32" oversize) |
| 6 | 27878A | 0 | Valve, Intake (Standard) |
| 6 | 27880A | 0 | Valve, Intake (1/32" oversize) |
| 7A | 27882 | 0 | Cap, Upper valve spring |
| 7 | 27882 | 0 | Cap, Upper valve spring |
| 8 | 27881 | 0 | Spring, Valve |
| 9 | 32581 | 0 | Cap, Lower valve spring |
| 10 | 650662B | 0 | Bolt, Connecting rod |
| 11 | 33294A | 0 | Crankshaft Assy. |
| 12 | 29783 | 0 | Pin, Crankshaft gear |
| 13 | 33245 | 0 | Gear, Crankshaft |
| 14A | 34329A | 0 | Piston & Pin Assy. (Standard) (3-1/8") |
| 14A | 34330A | 0 | Piston & Pin Assy. (.010 oversize) |
| 14A | 34331A | 0 | Piston & Pin Assy. (.020 oversize) |
| 14 | 34552 | 0 | Piston, Pin & Ring Assy. (Std.) (3-1/8") |
| 14 | 34553 | 0 | Piston, Pin & Ring Assy. (.010 oversize) |
| 14 | 34554 | 0 | Piston, Pin & Ring Assy. (.020 oversize) |
| 15 | 34332 | 0 | Ring Set, Piston (Standard) (3-1/8") |
| 15 | 34333 | 0 | Ring Set, Piston (.010 oversize) |
| 15 | 34334 | 0 | Ring Set, Piston (.020 oversize) |
| 16 | 27888 | 0 | Ring, Piston pin retaining |
| 17 | 32591C | 0 | Rod Assy., Connecting |
| 18 | 32589 | 0 | Key, Flywheel |
| 19A | 29443 | 0 | Clip, Fuel line |
| 19 | 27275 | 0 | Clip, Hi-tension wire |
| 20A | 33581 | 0 | Screen, Oil filter |
| 21 | 34034 | 0 | Lifter, Valve |
| 22 | 34040 | 0 | Camshaft (Mechanical Compression Release) |
| 23 | 33253 | 0 | Gasket, Mounting flange |
| 24 | 33580 | 0 | Flange, Mounting |
| 25 | 29117 | 0 | Screw |
| 26 | 31356 | 0 | Pump Assy., Oil |
| 27 | 31950 | 0 | Seal, Oil |
| 28 | 31927 | 0 | Plug, Oil drain (3/8-18 sq. hd.) |
| 29 | 650488 | 0 | Screw |
| 30 | 33992A | 0 | Tube, Oil filler (Plastic) |
| 33 | 33589A | 0 | Dipstick, Oil (Twist Lock) |
| 34 | 33590 | 0 | "O" Ring |
| 35 | 30668 | 0 | Shaft, Mechanical governor |
| 36A | 30590A | 0 | Washer, Flat |
| 36 | 31707A | 0 | Spacer Assy., Governor |
| 37 | 30591 | 0 | Gear Assy., Governor |
| 38 | 30588A | 0 | Spool, Governor |
| 39 | 29193 | 0 | Ring, Retaining |
| 40 | 33577 | 0 | Rod, Governor |
| 41 | 32651 | 0 | Lever, Governor |
| 42 | 31335 | 0 | Clamp, Governor lever |
| 43 | 650548 | 0 | Screw, Hex washer hd., 8-32 x 5/16 |
| 44 | 28277 | 0 | Washer, Flat |
| 45 | 30088A | 0 | Screw, Phil. fil. hd. Sems, 1/4-28 x 1 |
| 46 | 33862 | 0 | Pipe, Intake |
| 47 | 27915 | 0 | Gasket, Intake pipe |
| 48 | 33261 | 0 | Bracket, Intake pipe |

| Ref # | Part Number | Qty | Description |
|-------|-------------|-----|--|
| 49 | 29752 | 0 | Nut |
| 50 | 30200 | 0 | Screw |
| 52 | 650738 | 0 | Screw |
| 53 | 33861 | 0 | Gasket, Carburetor |
| 54 | 650378 | 0 | Screw |
| 55 | 650378 | 0 | Screw |
| 56 | 33865B | 0 | Control Assy., Speed |
| 56A | 610973 | 0 | Terminal Assy. |
| 57A | 31342 | 0 | Spring, Compression |
| 58 | 650549 | 0 | Screw |
| 59A | 27793 | 0 | Clip, Conduit |
| 59 | 28942 | 0 | Screw |
| 60 | 33151 | 0 | Link, Governor spring |
| 61 | 31361 | 0 | Spring, Governor |
| 62 | 33860 | 0 | Link, Throttle |
| 72 | 34041 | 0 | Gasket, Cylinder head |
| 73 | 34030 | 0 | Head, Cylinder |
| 74 | 33272 | 0 | Cover, Cylinder head |
| 75 | 6021A | 0 | Screw, Hex flange hd., 5/16-18 x 1-1/2 |
| 75 | 650692 | 0 | Screw, Hex hd., 5/16-18 x 1-3/4 |
| 75 | 650711 | 0 | Screw, Hex hd., 5/16-18 x 1-5/8 |
| 75 | 650727 | 0 | Screw, Special hex hd. tapped, 5/16-18 x |
| 77 | 650713 | 0 | Screw, Hex hd., 5/16-18 x 5/8 |
| 77 | 650737 | 0 | Screw, Hex washer hd. taptite, 1/4-20 x 1/2 |
| 77 | 650738 | 0 | Screw |
| 79 | 650691 | 0 | Washer, Flat |
| 80 | 27896 | 0 | Gasket, Breather cover |
| 81 | 28423 | 0 | Body, Breather |
| 82 | 28424 | 0 | Element, Breather |
| 83 | 650128 | 0 | Screw |
| 84 | 28425 | 0 | Cover, Valve chamber |
| 85 | 27627 | 0 | Tube, Breather |
| 86 | 33636 | 0 | Plug, Spark (Champion J-8 or equivalent) |
| 86 | 34251 | 0 | Resistor Spark Plug |
| 87 | 33273 | 0 | Extension, Blower housing |
| 88 | 30688 | 0 | Screw, Hex hd. Sems, 1/4-20 x 1/2 |
| 89 | 650128 | 0 | Screw |
| 90 | 33582 | 0 | Housing, Blower (6.375 dia. starter mtg. |
| 91 | 29747A | 0 | Screw |
| 93 | 650788 | 0 | Screw, Hex hd. spin-lock thr'd forming, |
| 94 | 29536 | 0 | Baffle, Blower housing |
| 95 | 650561 | 0 | Screw |
| 96 | 29752 | 0 | Nut |
| 97 | 33583A | 0 | Tank Assy., Fuel (Charcoal Poly) (2 1/2 qt.) |
| 98 | 33032 | 0 | Cap, Fuel filler (Red Plastic) (Spurt |
| 98 | 34118 | 0 | Cap, Fuel filler (Red Plastic) (Spurt |
| 98 | 34210 | 0 | Cap, Fuel filler (Red Plastic) (Spurt |
| 98 | 410144B | 0 | Cap, Fuel filler (White Plastic) (Std.) |
| 99 | 26460 | 0 | Clamp, Fuel line |
| 100 | 29774 | 0 | Line, Fuel (Braided 8.25") |
| 100 | 30705 | 0 | Line, Fuel (Braided 16") |
| 100 | 30962 | 0 | Line, Fuel (Braided 32") |
| 103 | 33280A | 0 | Muffler |
| 104 | 31588 | 0 | Plate, Muffler locking |
| 105 | 650729 | 0 | Screw |
| 106A | 33584 | 0 | Deflector, Exhaust |
| 107 | 650743 | 0 | Screw |
| 109 | 33662 | 0 | Hub & Screen Assy., Starter |

| Ref # | Part Number | Qty | Description |
|-------|-------------|-----|---|
| 110 | 8116 | 0 | Nut |
| 111 | 650815 | 0 | Washer, Belleville |
| 115 | 650489 | 0 | Screw |
| 115 | 650516 | 0 | Screw |
| 118 | 28763 | 0 | Screw, Hex washer hd. thread-forming, 10-24 |
| 119 | 33876 | 0 | Gasket, Stator |
| 121 | 610118 | 0 | Cover, Spark plug |
| 122 | 610683 | 0 | Wire, Ground (Female fitting both ends) |
| 123 | 33013 | 0 | Cover, Starter bubble |
| 124 | 650760 | 0 | Screw |
| 141 | 27272 | 0 | Gasket, Air cleaner |
| 195 | 34374 | 0 | Decal, Instruction |
| 196 | 30547A | 0 | Contact Assy., Breaker |
| 197 | 610767A | 0 | Condenser |
| 199 | 631021 | 0 | Inlet Needle, Seat & Clip Assy. |
| 200 | 631981 | 0 | Carburetor |
| 201 | 610979 | 0 | Magneto, Tecumseh |
| 202 | 590479 | 0 | Starter, Rewind |
| 206 | 33279C | 0 | Gasket Set |



| Ref # | Part Number | Qty | Description |
|-------|-------------|-----|--|
| 99 | 26460 | 0 | Clamp, Fuel line |
| 100 | 29774 | 0 | Line, Fuel (Braided 8.25") |
| 100 | 30705 | 0 | Line, Fuel (Braided 16") |
| 100 | 30962 | 0 | Line, Fuel (Braided 32") |
| 103B | 391026 | 0 | Muffler |
| 110 | 8116 | 0 | Nut |
| 111 | 650815 | 0 | Washer, Belleville |
| 122B | 34254 | 0 | Wire Assy., Alternator adapter (Eyelet |
| 125 | 33323 | 0 | Screen, Muffler |
| 126 | 650578 | 0 | Screw |
| 127 | 33700 | 0 | Cover & Tube, Muffler |
| 135 | 33266 | 0 | Bracket, Air cleaner |
| 136 | 33267 | 0 | Bracket, Air cleaner |
| 137 | 28820 | 0 | Screw |
| 138 | 33268 | 0 | Element, Air cleaner |
| 139 | 33269A | 0 | Cover, Air cleaner |
| 140 | 650513 | 0 | Nut, Wing |
| 157 | 32765 | 0 | Clamp, Blower housing extension |
| 158 | 28820 | 0 | Screw |
| 159 | 610938 | 0 | Regulator, Rectifier (7 Amp) |
| 164 | 730130 | 0 | Muffler Adapter Kit |
| 165 | 30196 | 0 | Screw |
| 166 | 27930 | 0 | Gasket, Exhaust |
| 204 | 33329 | 0 | Starter Motor Kit (110-120 Volt) |
| 204 | 33329A | 0 | Starter Motor Kit (110-120 Volt) |
| 204 | 33329B | 0 | Starter Motor Kit (110-120 Volt) |
| 204 | 33519 | 0 | Starter Motor Kit (110-120 Volt) |
| 204 | 33519A | 0 | Starter Motor Kit (110-120 Volt) |
| 204 | 33519B | 0 | Starter Motor Kit (110-120 Volt) |
| 205 | 610847 | 0 | Flywheel |